

Rosewill®

[R2-JBOD]



External Enclosure

User Manual

◆ Include

Hardware Installation Guide
HDD Formatting Guide

! ATTENTION
New HDD Must Be
Formatted Before Use

Thank you for purchasing a quality Rosewill Product.

Please register your product at : www.rosewill.com/ for complete warranty information and future support for your product.

Hardware Installation Guide

- Please follow the instructions and make sure your hard drive is successfully installed to the external enclosure!

STEP1: Release the 4 screws then pull out the rear panel and tray.



STEP2: Place the first HDD into the tray. Push the HDD to connect the SATA connector.

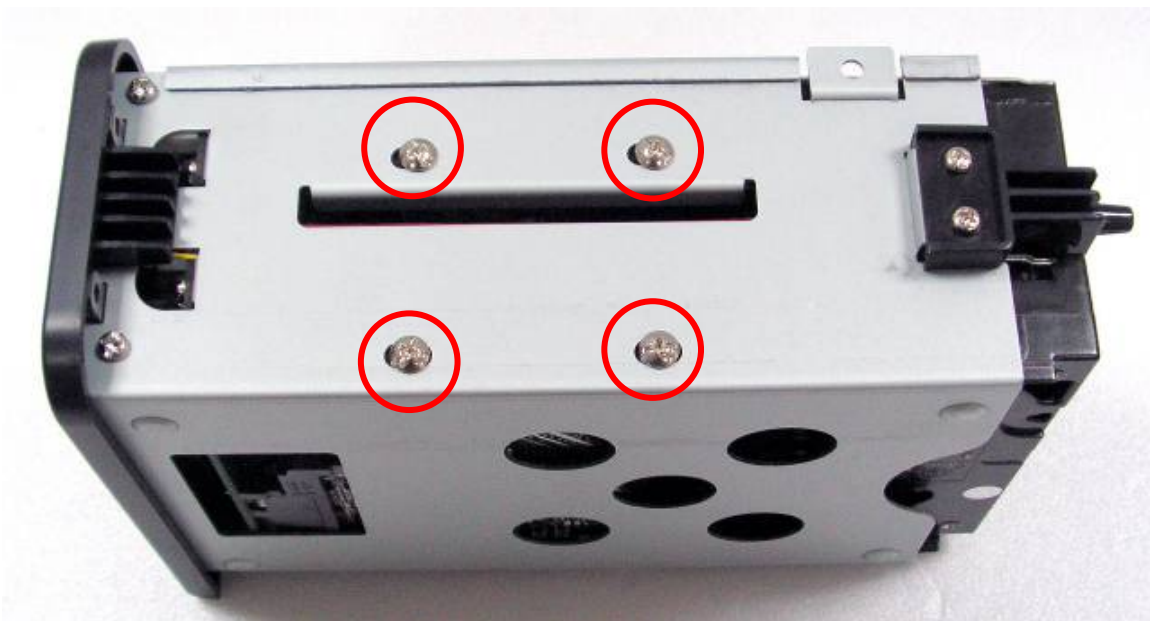


STEP3: Place the second HDD into the tray. Push the HDD to connect the SATA connector.



Note: Make sure all connectors are connected well.

STEP4: Screw the HDD on the tray both sides.



STEP5: Push the tray into the aluminum case. Screw the rear panel and enclosure together.



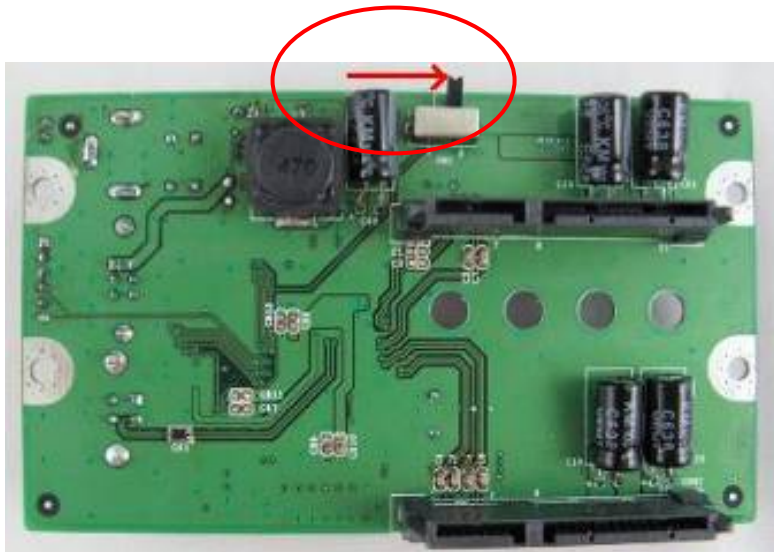
HDD Formatting Guide

This device can support JBOD& BIG Mode.

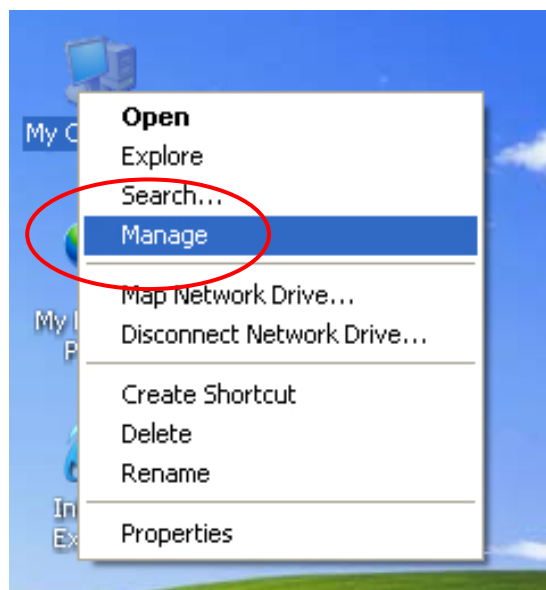
JBOD : It enables each hard drive to be seen separately as single drives, showing 2 HDD capacities.

Note: Backup before formatting your HDD.

JBOD Mode:

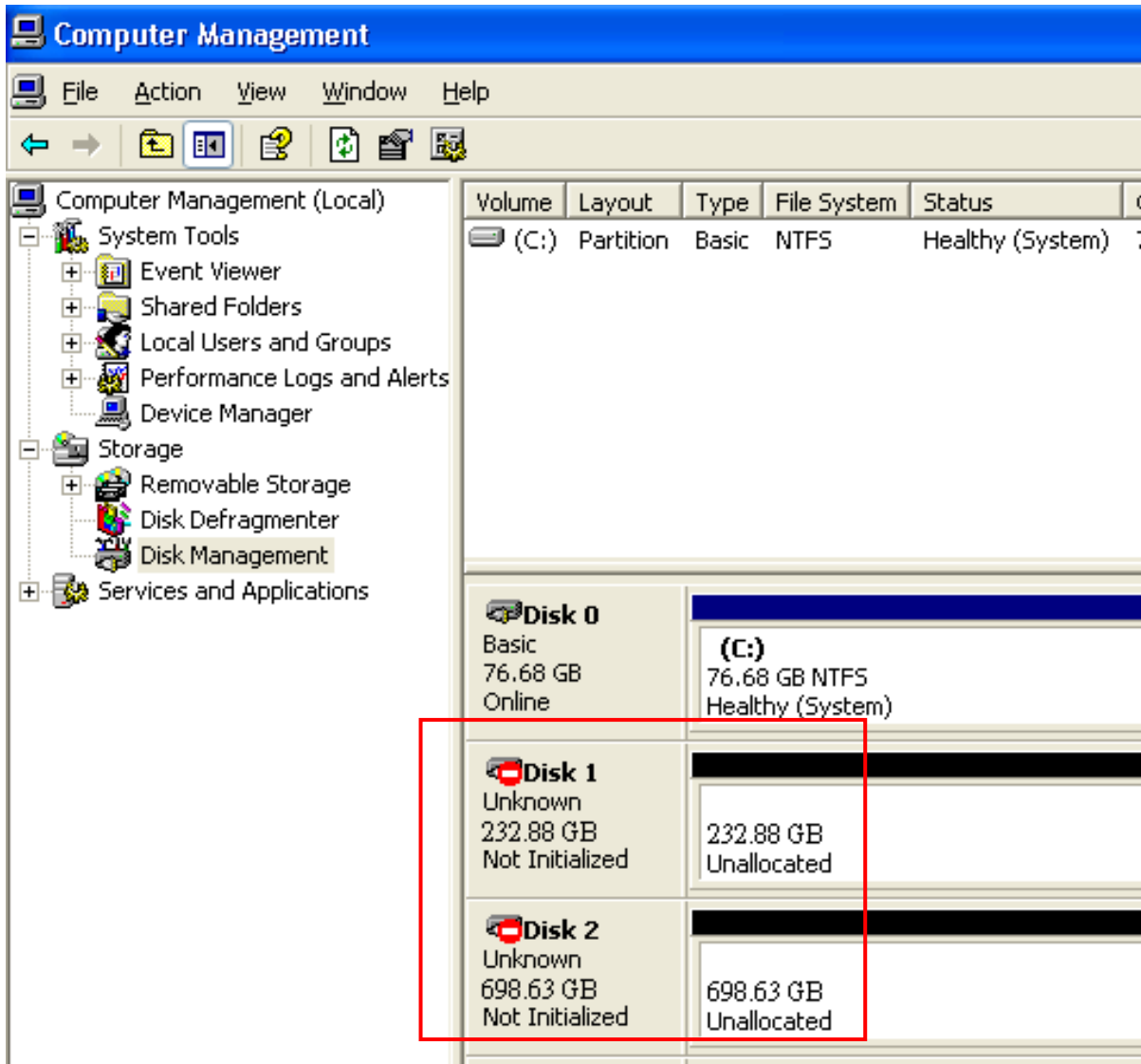


STEP1: Right-click on “My Computer” icon and select the “Manage” column.



STEP2: Select “Disk Management” and you will see your hard drives show “Unallocated”.

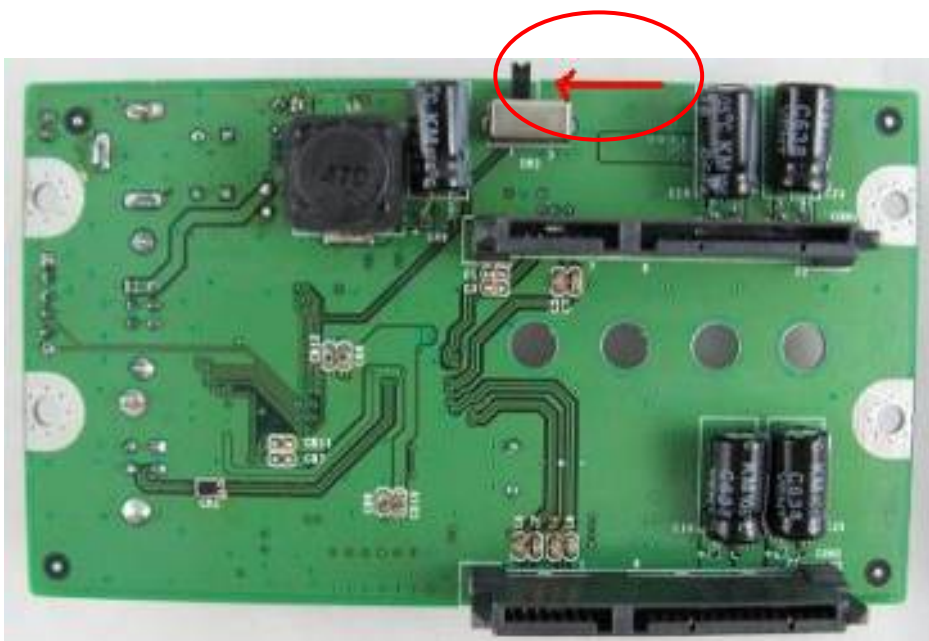
Sample : 750GB & 250GB hard drives.



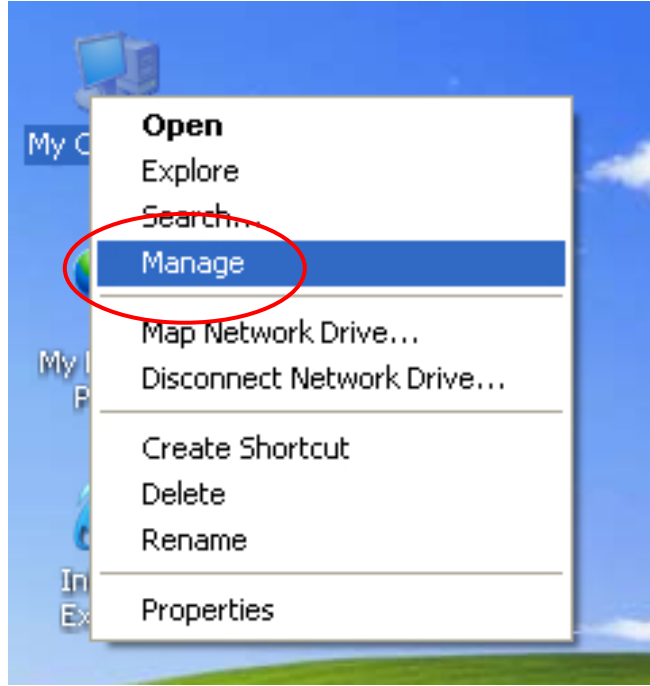
STEP3: Please refer to page 9.

BIG:

It concatenates a series of physical hard drives as a single large volume; hard drive A and B are combined into a storage capacity that is equal to the sum of each of the physical hard drives A and B. It is also possible to create a BIG volume using only a single hard disk drive connected to SATA connector 1, and then increase the storage capacity of the volume later by adding another hard disk drive to SATA connector 2, and pressing reset button. However, it is not possible to expand an existing BIG volume by adding another hard disk drive to SATA connector 2 and still preserve any existing data on that volume.

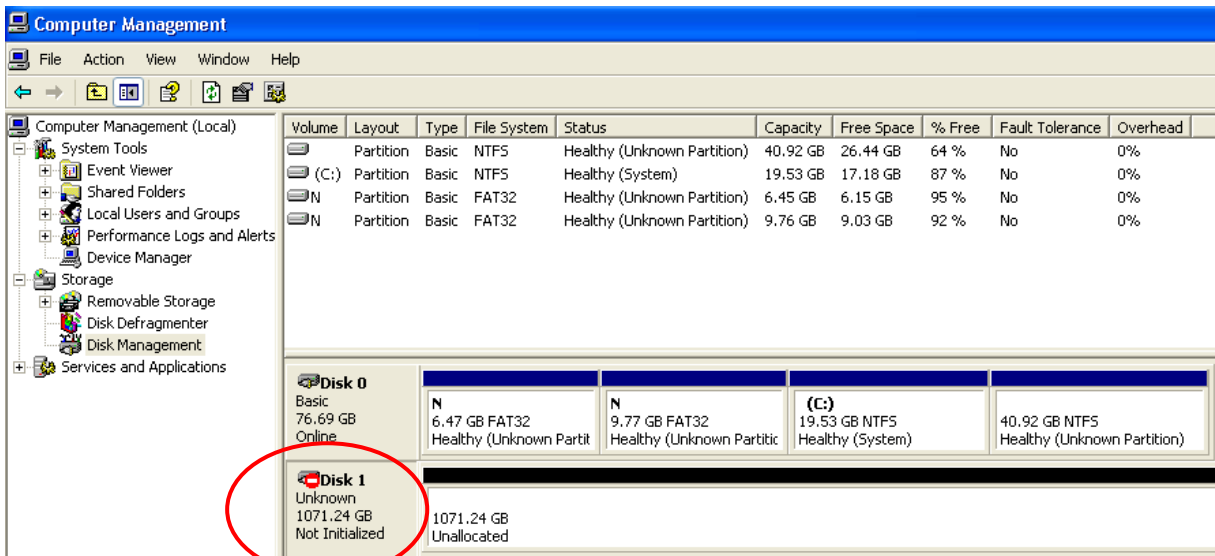
BIG Mode:

STEP1: Right -click “My Computer” icon and select the “Manage” column.



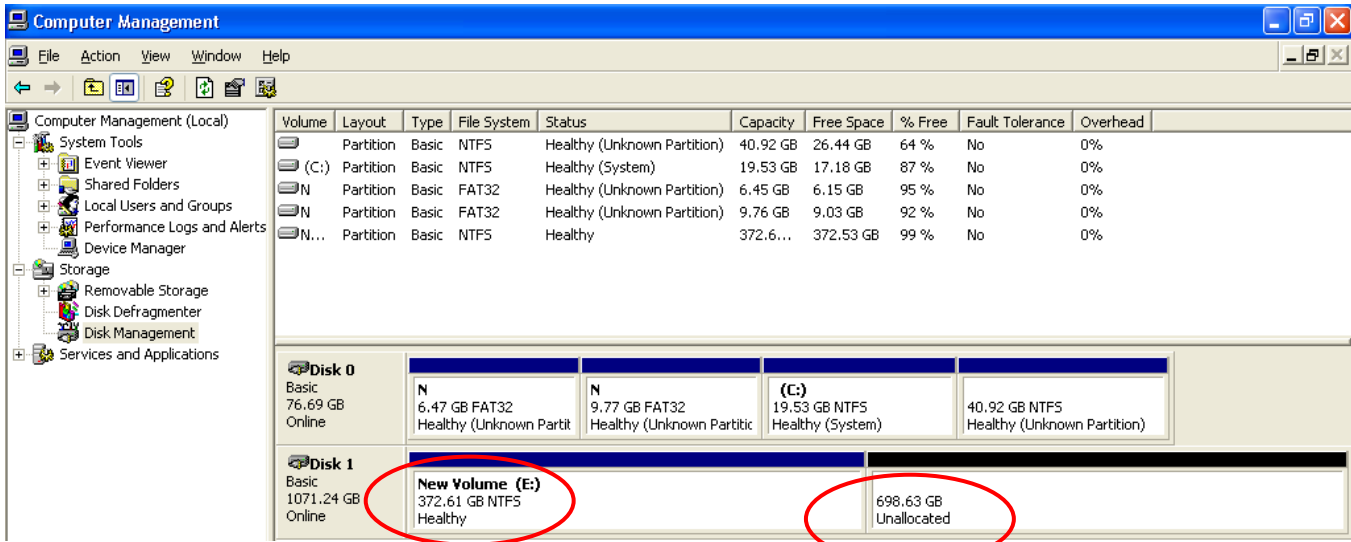
STEP2:
Two brand-new HDD

Select “Disk Management” and you will see your External HDD shows “Not Initialized”.

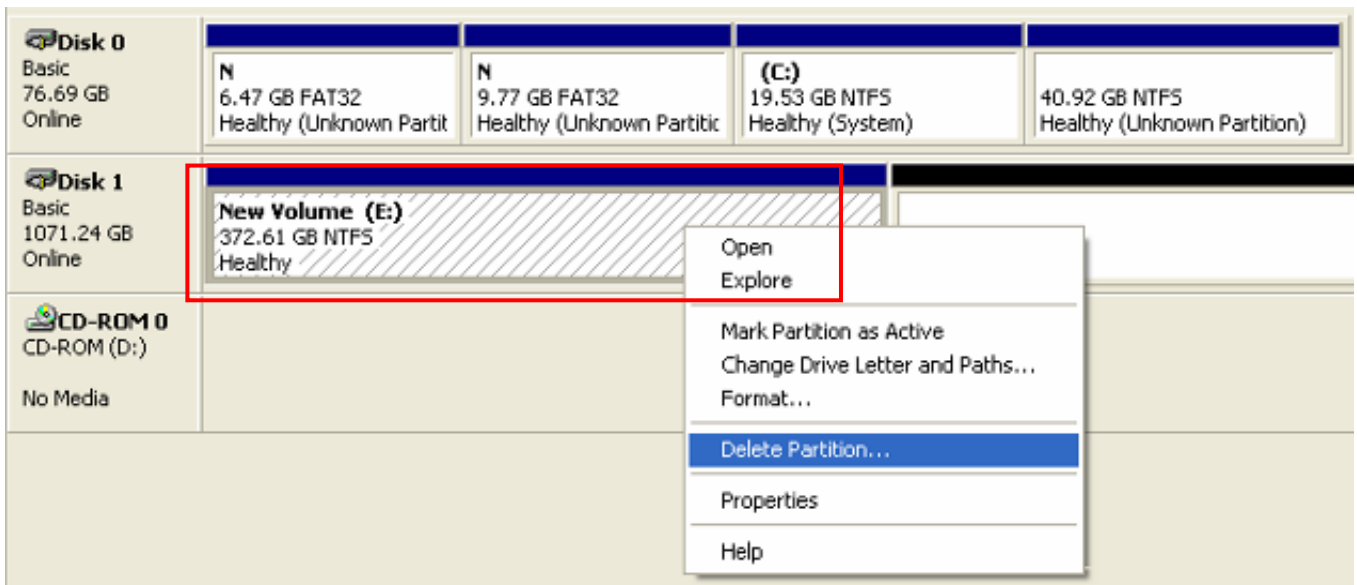


Two formatted HDDs (These two HDDs have to be combined into one disk.)

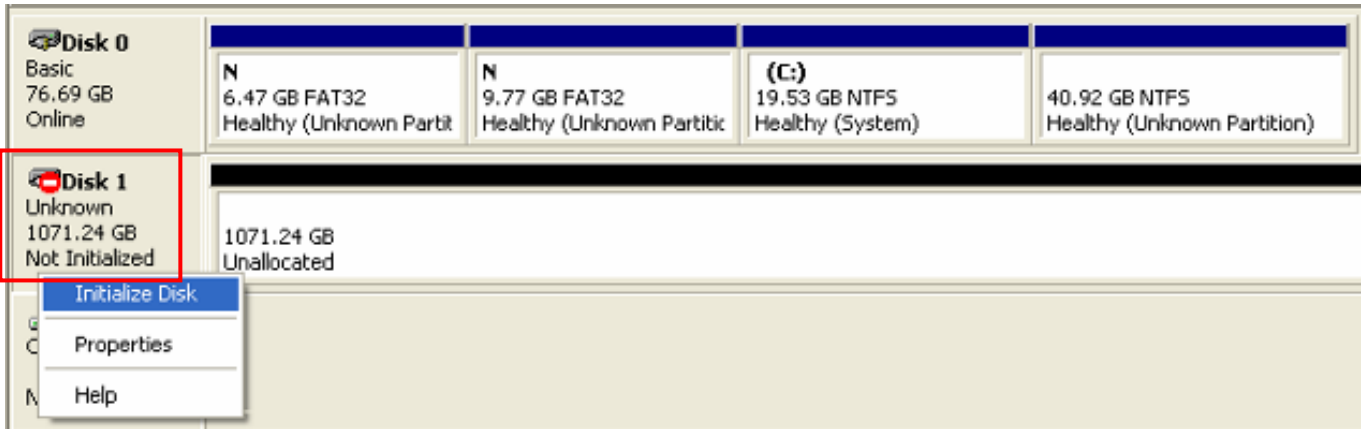
Select “Disk Management” and you will see your External HDD only shows one HDD, another shows “Unallocated”.



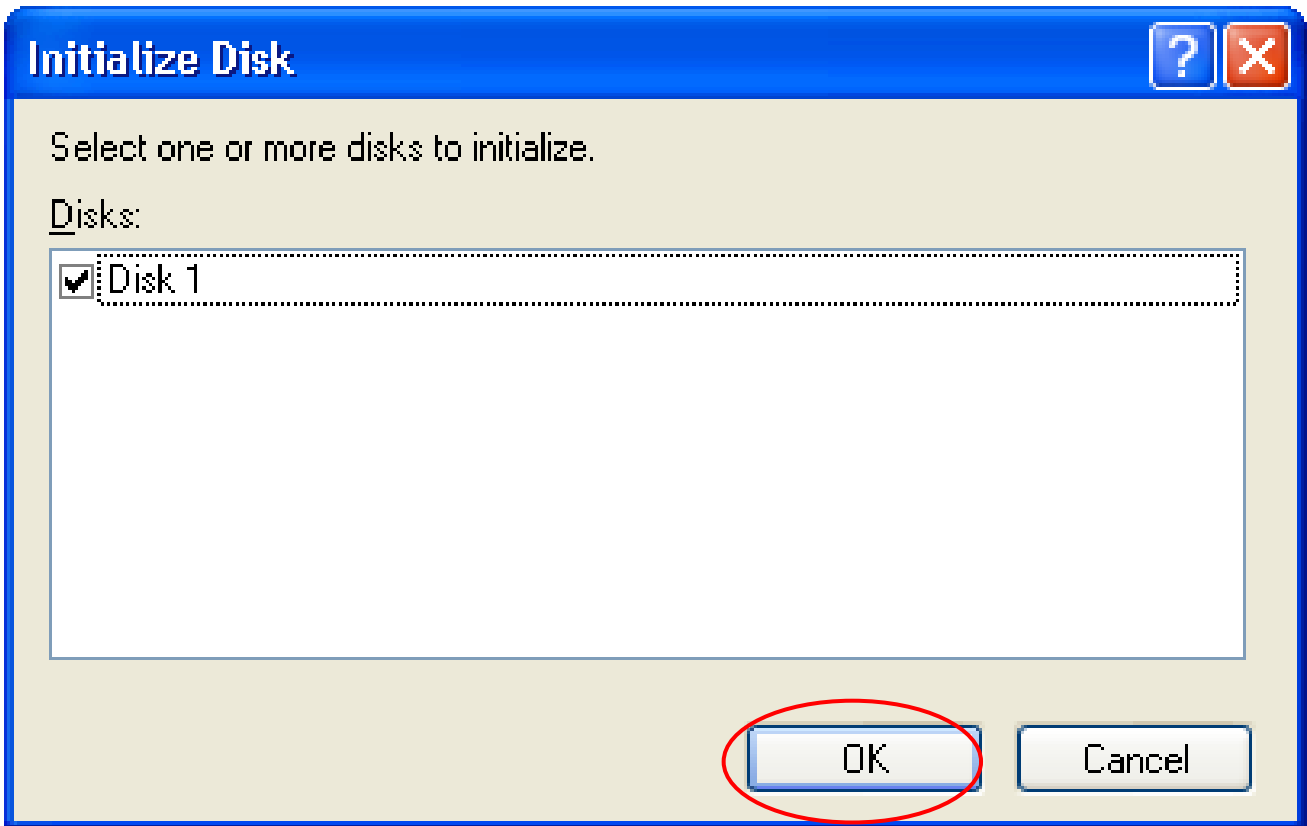
Right-click the red-squared block and select “Delete Partition”. Delete both HDDs’ partition then start to format two HDD into one.



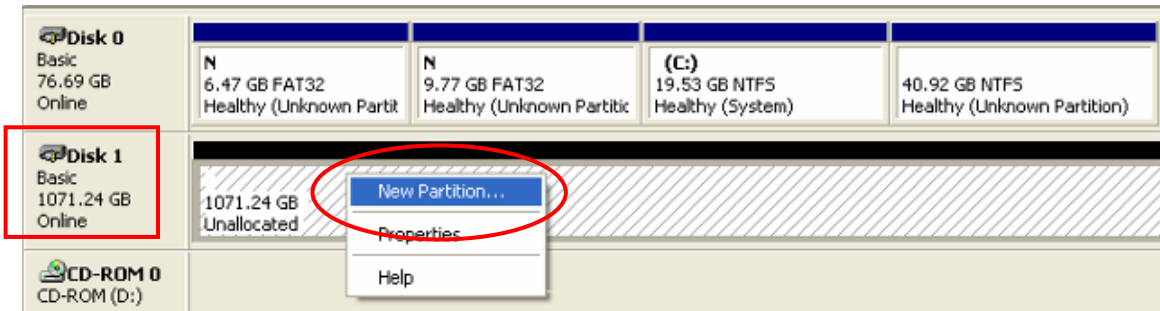
STEP3: Right-click the red-squared block and select “Initialize Disk”.



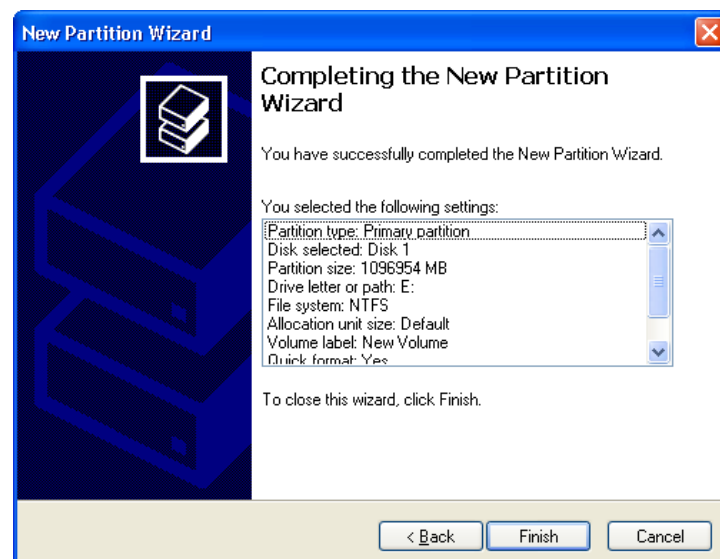
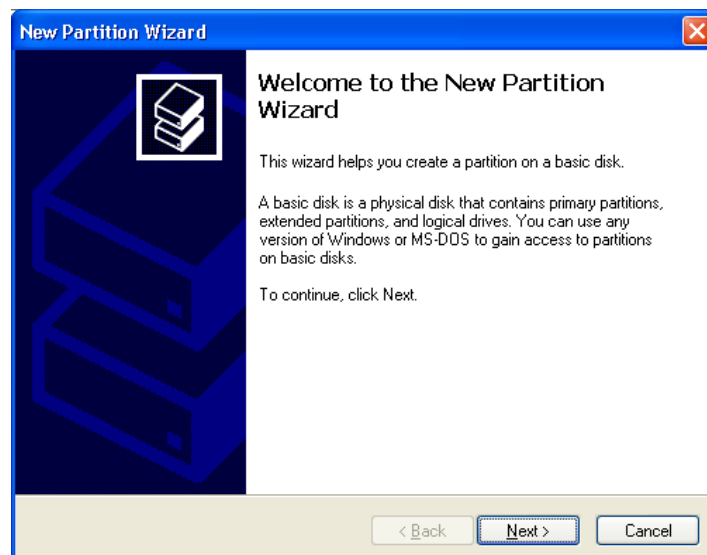
STEP4: Press “OK” button to initialize HDD.



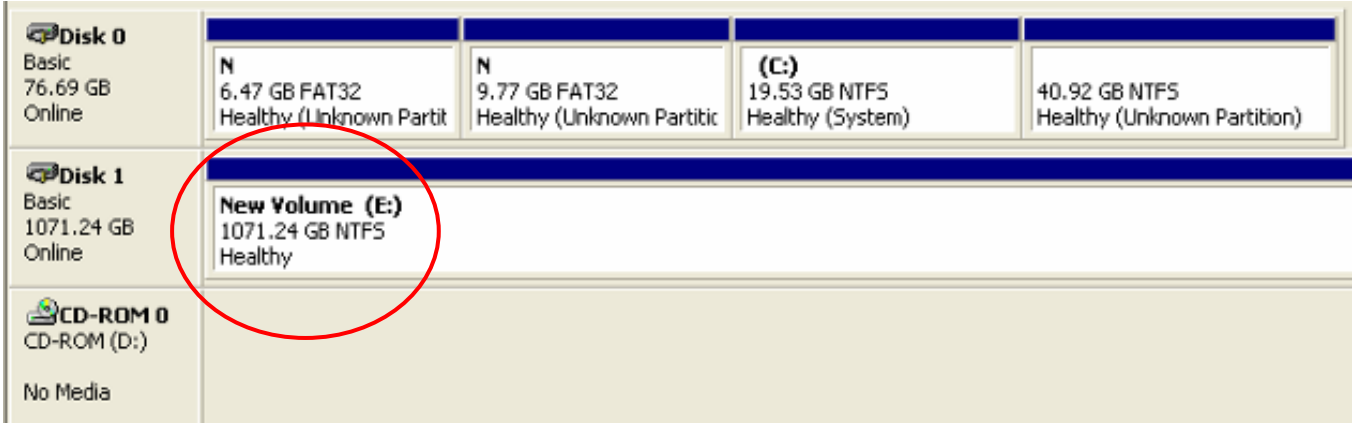
STEP5: The external HDD will be showed “Online”. Right-click the “Unallocated” block and select “New Partition”.



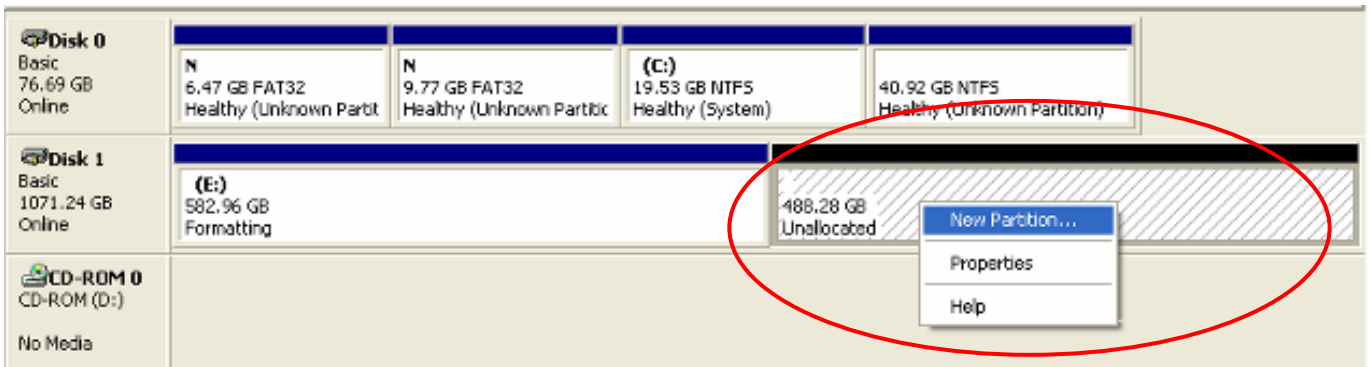
STEP6: The “New Partition Wizard” will appear. Please follow the instruction of the wizard to complete the partition.



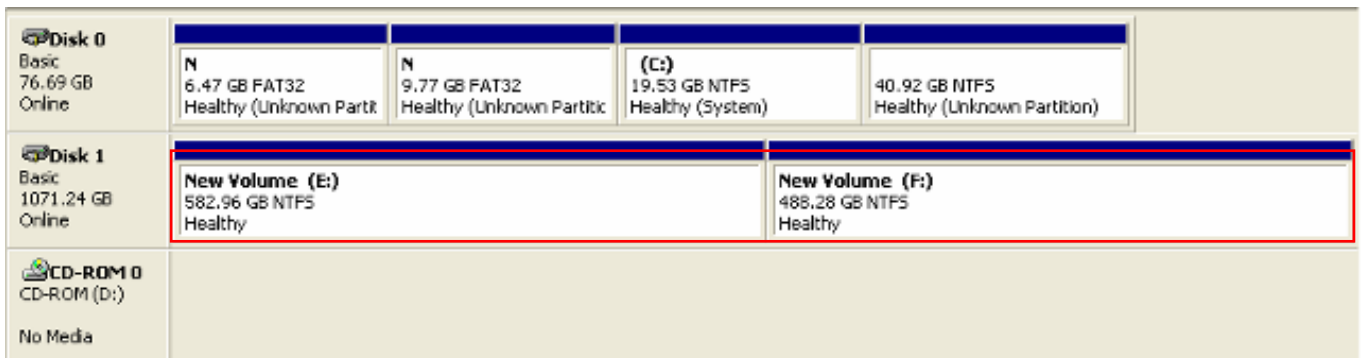
STEP7: When new partition is completed, the external HDD will be recognized as a “New Volume”.



If you divided HDD into two partitions, format two partitions separately.



After two partitions are formatted completely, you will see two healthy HDDs.



Free Manuals Download Website

<http://myh66.com>

<http://usermanuals.us>

<http://www.somanuals.com>

<http://www.4manuals.cc>

<http://www.manual-lib.com>

<http://www.404manual.com>

<http://www.luxmanual.com>

<http://aubethermostatmanual.com>

Golf course search by state

<http://golfingnear.com>

Email search by domain

<http://emailbydomain.com>

Auto manuals search

<http://auto.somanuals.com>

TV manuals search

<http://tv.somanuals.com>