



COOLER RCX-Z2 USER Manual

www.rosewill.com

Thank you for purchasing a High-Quality Rosewill Product.

Please register your product at : www.rosewill.com
for complete warranty information and future support for your product.
If you have any question while using our products, please visit our website : www.rosewill.com
for latest driver & user manual or feel free to contact us at feedback@rosewill.com

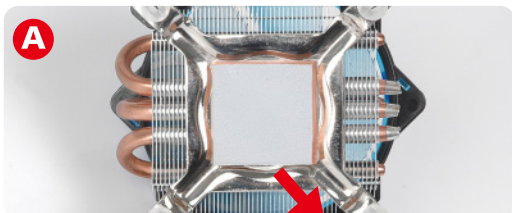
Support Email: techsupport@rosewill.com

Installation instruction

⚠ WARNING

Improper Installation will result in damage to the processor. Never switch on the computer system until the fan is connected on to the motherboard power connector.

STEP 1 >

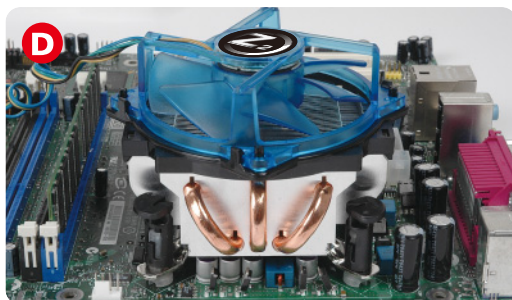
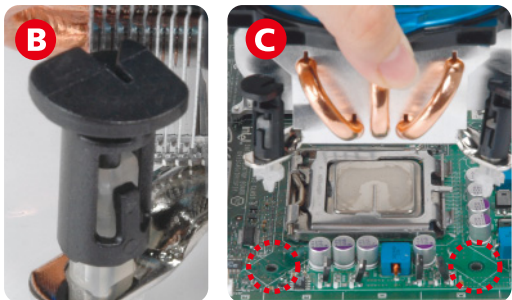


Grey thermal grease

Pre-installation

Ensure the surface of the CPU die is perfectly clean. Please apply our hi-performance thermal grease from the tube in box to the copper base of RCX-Z2. This procedure is very important which can even affect the cooling performance a lot.

STEP 2 >



Ensure that all four push-pins are turned in the opposite direction of the arrow (picture B). Place the cooler on the CPU aligning the push pins into the securing position on the motherboard (Picture C and D).

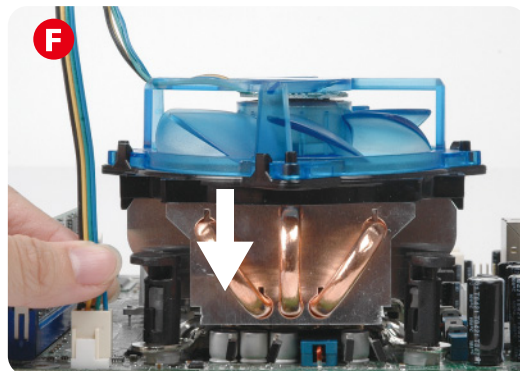
STEP 3 >



Clip attachment

Placing one hand on the cooler to hold it in position, use the other hand to secure the pins by pushing them down (Picture E) until a locking click is felt or heard from each one (secure the push-pins in a crosswise manner).

STEP 4 >



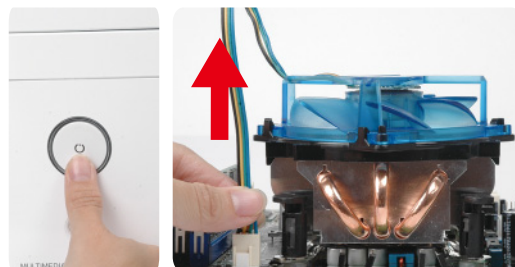
Connect the CPU cooler fan to the motherboard power connector marked CPU FAN. This connector is keyed so the power lead can only be installed one way. If a connector marked CPU FAN is not apparent on the board, check the motherboard manual for fan connection information.

Uninstall Manual

⚠ WARNING

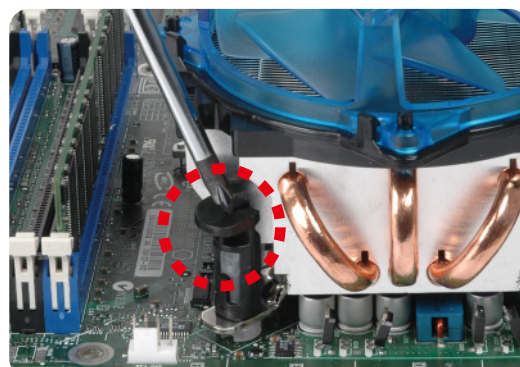
Improper Installation will result in damage to the processor. Never switch on the computer system until the fan is connected on to the motherboard power connector.

STEP 1 >



Make sure the PC is turned off and disconnect the fan from motherboard power connector (placing the PC in horizontal position is recommended).

STEP 2 >



Turn the pins in the direction indicated by the arrows (using a flat head screwdriver is recommended).

STEP 3 >

Take off the cooler by lifting it up gently. If the cooler still seems to be secured, try to ease the pins by retracting each pin individually.

Free Manuals Download Website

<http://myh66.com>

<http://usermanuals.us>

<http://www.somanuals.com>

<http://www.4manuals.cc>

<http://www.manual-lib.com>

<http://www.404manual.com>

<http://www.luxmanual.com>

<http://aubethermostatmanual.com>

Golf course search by state

<http://golfingnear.com>

Email search by domain

<http://emailbydomain.com>

Auto manuals search

<http://auto.somanuals.com>

TV manuals search

<http://tv.somanuals.com>