



Modem RNX-56AG
User Manual

Contents

Introduction

Features	3
Minimum System Requirements	3
Package Checklist	3

Installation

Hardware Installation	3
Line Connection	4
Software Installation for Windows 98SE/ME/2000/XP/Vista.....	4

Modem Dialing Location

For WIN 98SE/ME	5
For WIN 2000/XP	5
For WIN VISTA	5
For WIN 7.....	5

Manual Dial-up Connection Settings

Manual Dial-up Connection Settings (For 98SE/ ME/ 2000/XP)	6
Manual Dial-up Connection Settings (For Vista).....	11
Manual Dial-up Connection Settings (For Win7)	17

Introduction

Features

This modem card supports following communication standards.

Data

- ITU-T V.92
- ITU-T V.90, V.34, V.32bis, V.32, V.22bis, V.21, V.22
- Bell 103 & 212A
- ITU-T V.44, V.42bis & MNP 5 (Data compression)
- ITU-TV.42 & MNP2-4 (Error correction)

Fax

- ITU-T V.17 (14400bps)
- ITU-T V.29 (9600bps)
- ITU-T V.27 (4800bps)

Minimum System Requirements

- CPU Pentium MMX 233 up
- Windows platform
- Sound Card

Package Checklist

- One Fax Modem
- One Phone cable
- One Driver Disk (including user manual and driver)

Hardware Installation

1. Power off your PC and remove the casing of PC carefully.
2. Press the modem card firmly into the free PCI slot and secure it with screws to your PC.
3. Reinstall the casing of PC.
4. Plug the telephone line into the "Line" jack.

Line Connection

Figure I: shows the back panel of the internal modem card.

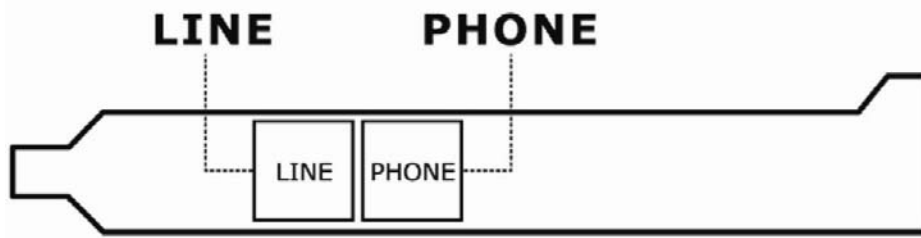


Figure I: Bracket Panel

Software Installation

For Windows 98SE / ME / 2000 / XP / VISTA/ 7

1. Once you have completed the hardware installation, power on your computer and put the driver CD into the proper CD-ROM. **Found New Hardware Wizard** window pops up, click **Cancel**.



2. Click your DVD ROM to see the folders. There are 6 folders (Vista32/Vista 64/Win2KXP/Win98/WinMe/WinNT) in the driver disk. Choose the correct folder according to your windows.
(e.g.D(CD-ROM):\Driver\Win2KXP (or other OS version))

After you enter the correct folder, double-click setup.exe and follow the instruction to complete the driver installation.

Modem Dialing Location

If you want to change your dialing location, please follow the instruction as below:

For WIN 98SE/ME/

Click **Control Panel**

-> **Modems**

-> Under **General** click **Dialing Properties**, and then you can change your location.

For WIN 2000/XP

Click **Control Panel**

-> **Phone And Modem Options**

-> Under **Dialing Rules** click **Edit**, and then you can change your location.

FOR WIN VISTA

Click **Control Panel**

-> **Phone And Modem Options**

-> Under **Dialing Rules** click **Edit**, and then you can change your location.

FOR WIN 7

Click **Control Panel**

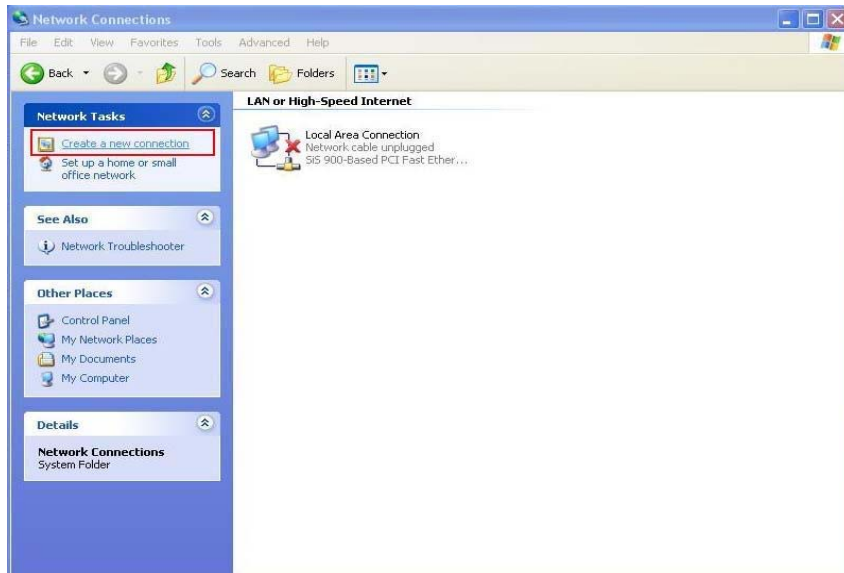
→ **Phone And Modem Options**

→ Under **Dialing Rules** click **Edit**, and then you can change your location.

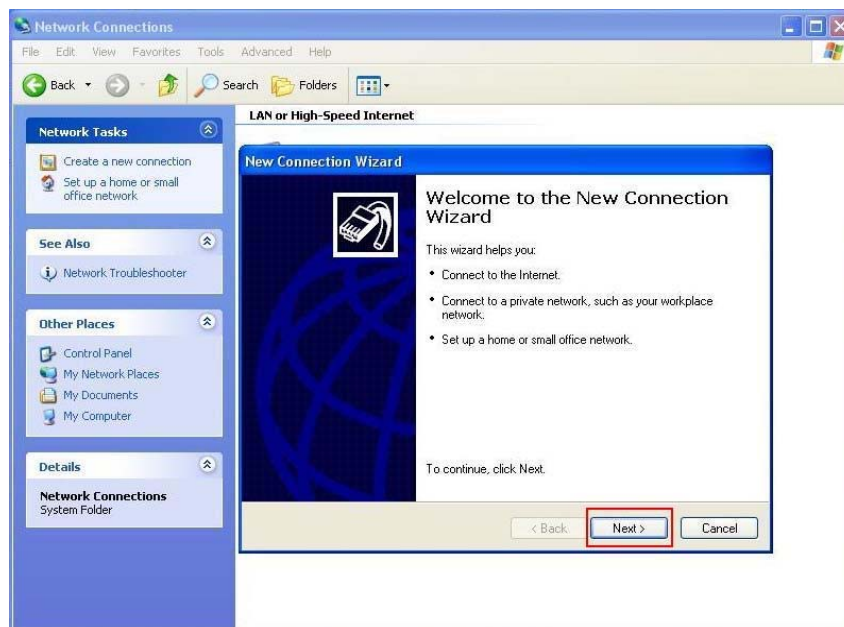
Manual Dial-up connection settings

Manual Dial-up Connection Settings (XP for example)

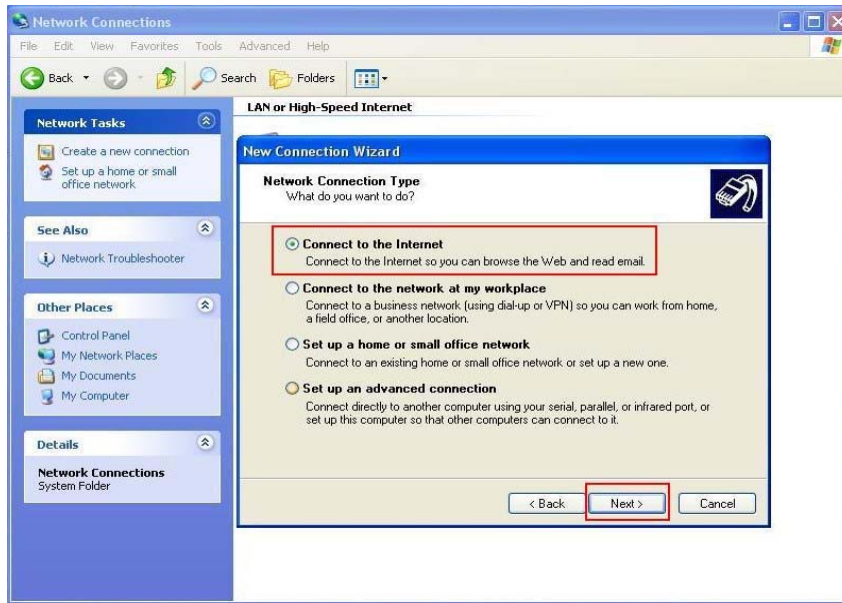
1. On **Control Panel/Network Connections**, click **Create a new connection**.



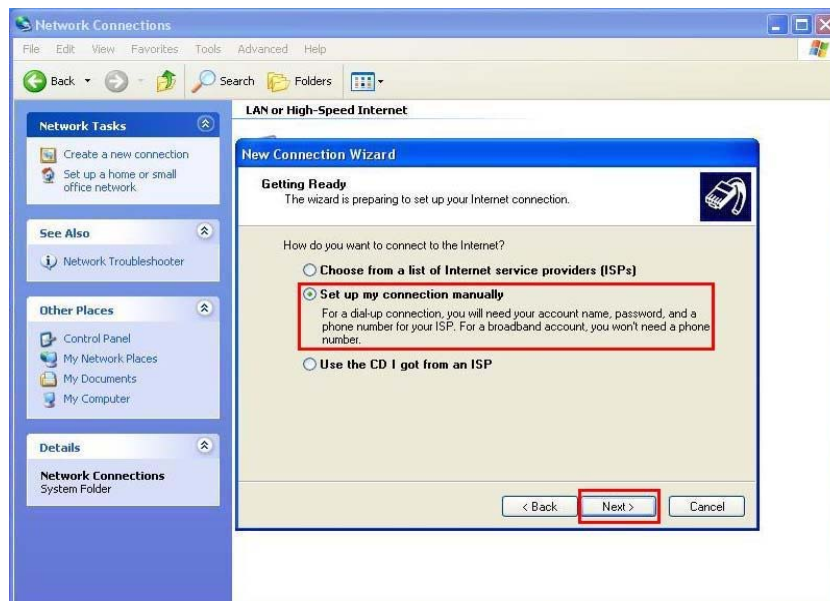
2. Click **Next**.



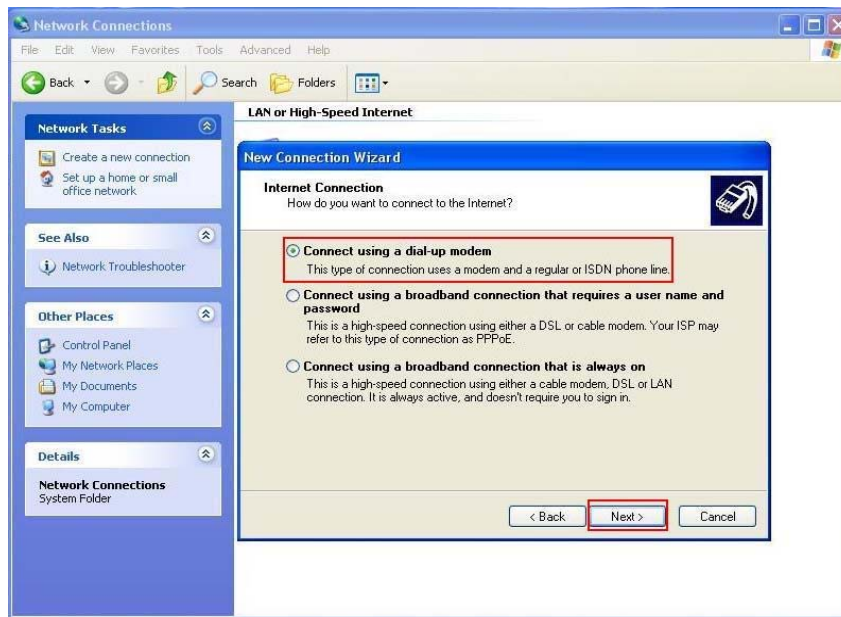
3. Select **Connect to the Internet** and click **Next**.



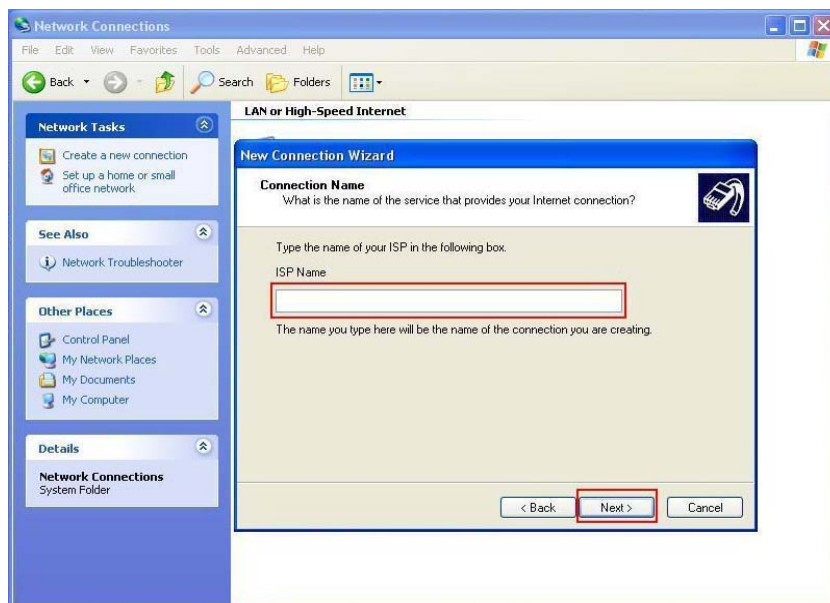
4. Select **Set up my connection manually** and click **Next**.



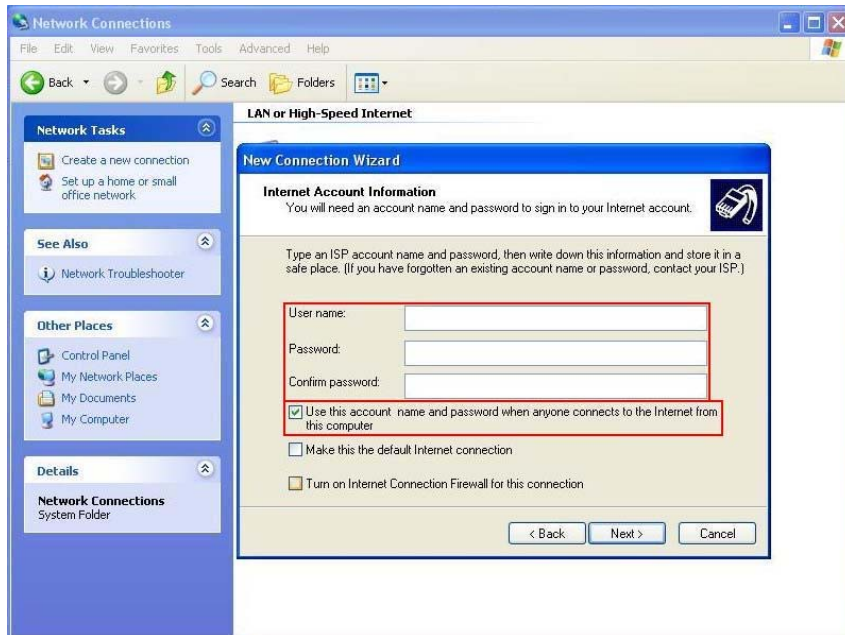
5. Select **Connect using a dial-up modem** and click **Next**.



6. Input **ISP Name** and click **Next**.



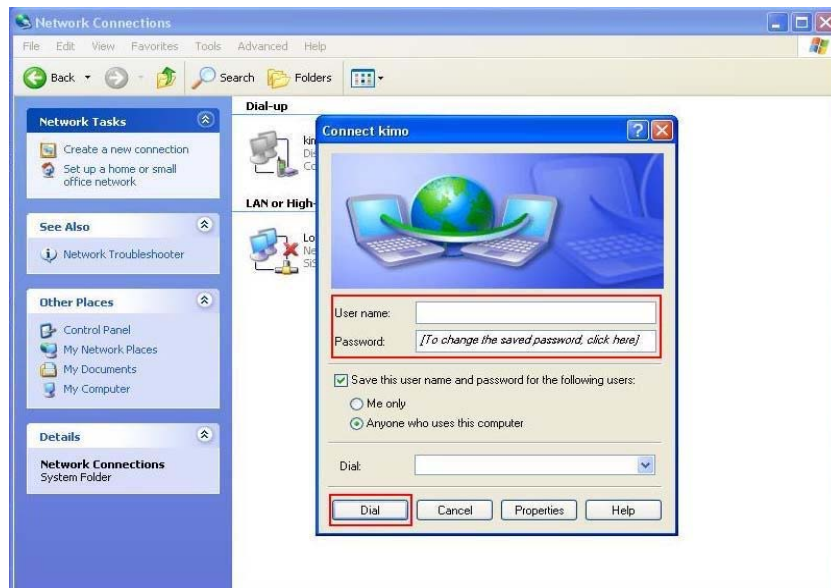
7. Input **User name**, **Password** and **Confirm password**, select **Use this account name and password when anyone connects to the Internet from this computer**.



8. Click **Finish** to complete manual connection.

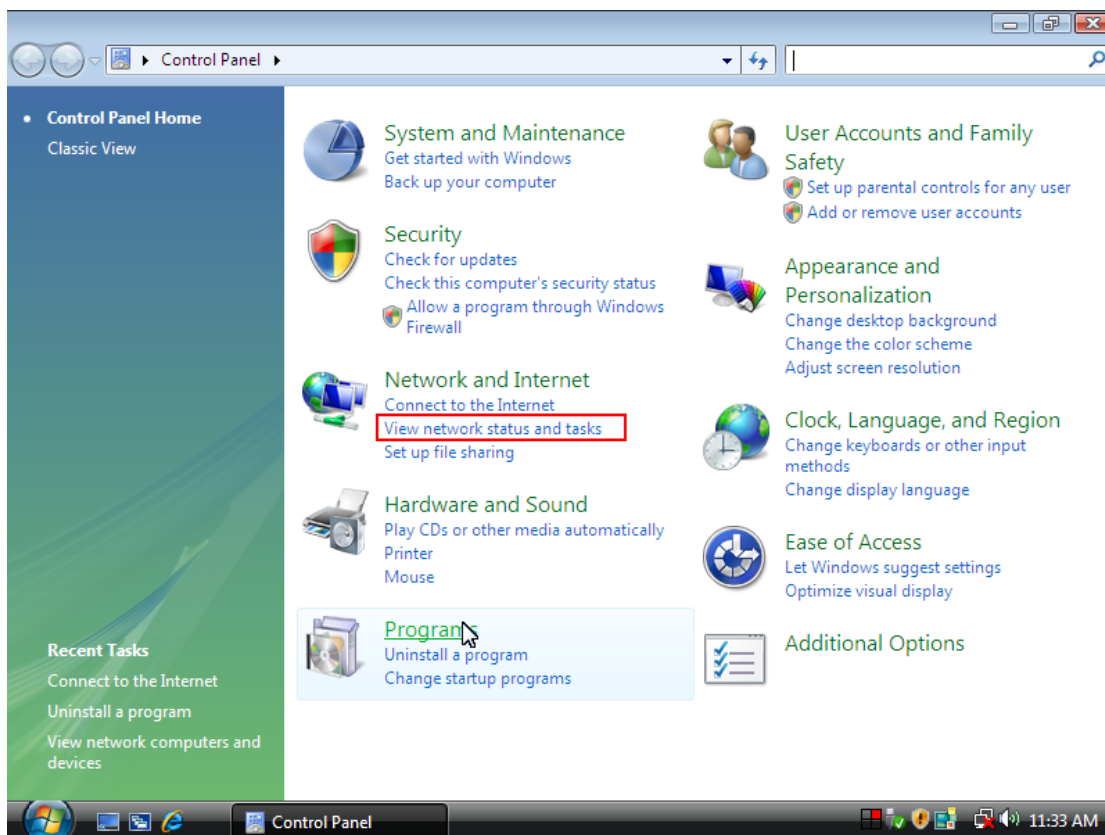


9. Click **Dial** to connect to Internet.

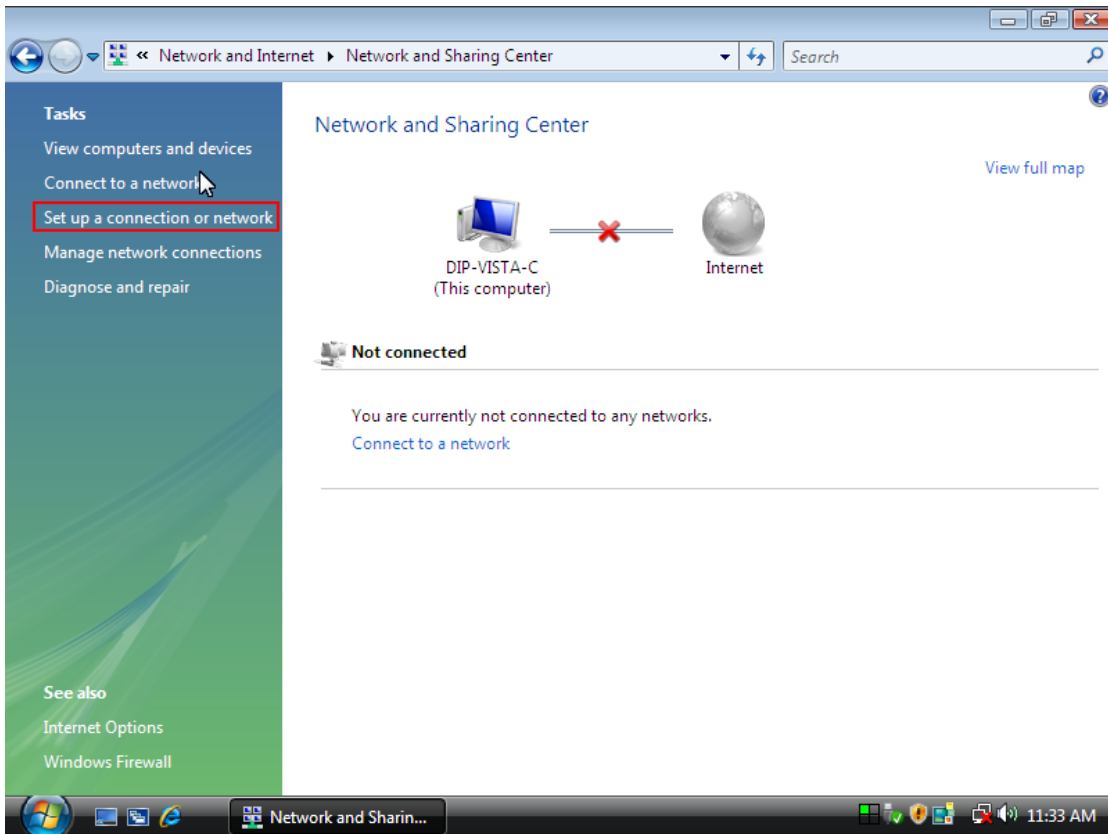


Manual Dial-up Connection Settings (For Vista)

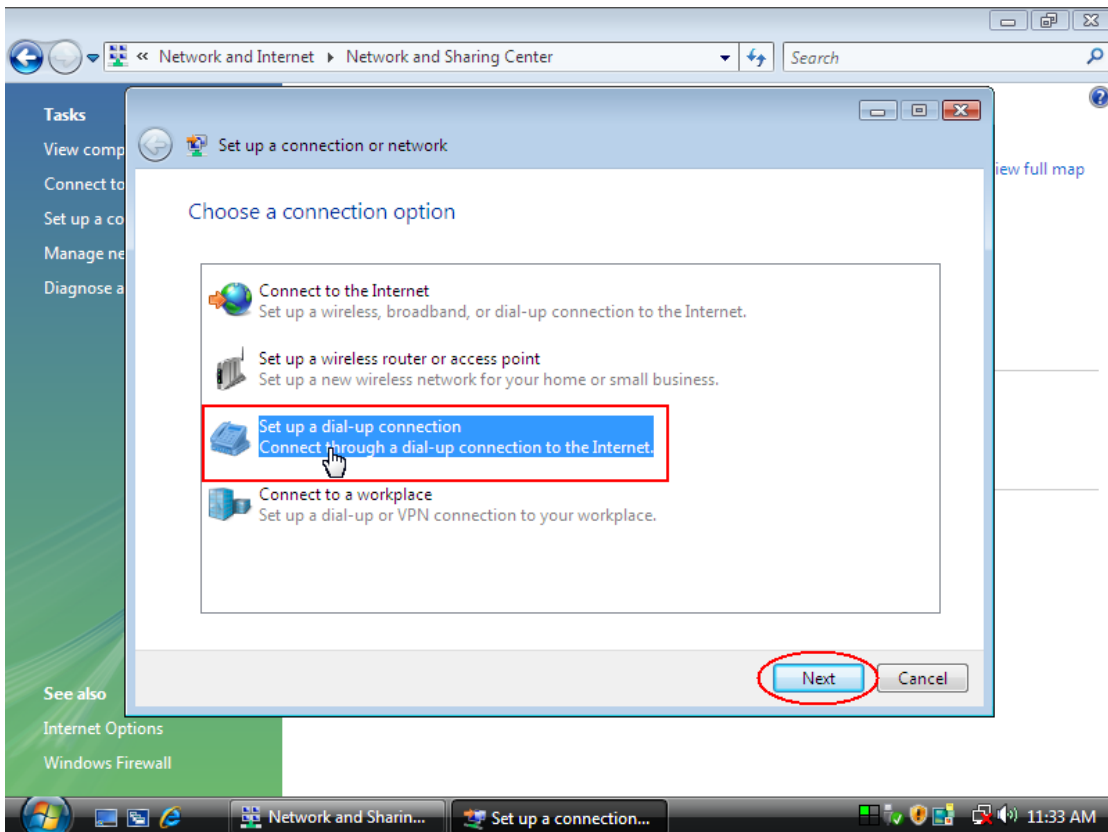
1. Open control Panel and click **view network status and tasks**



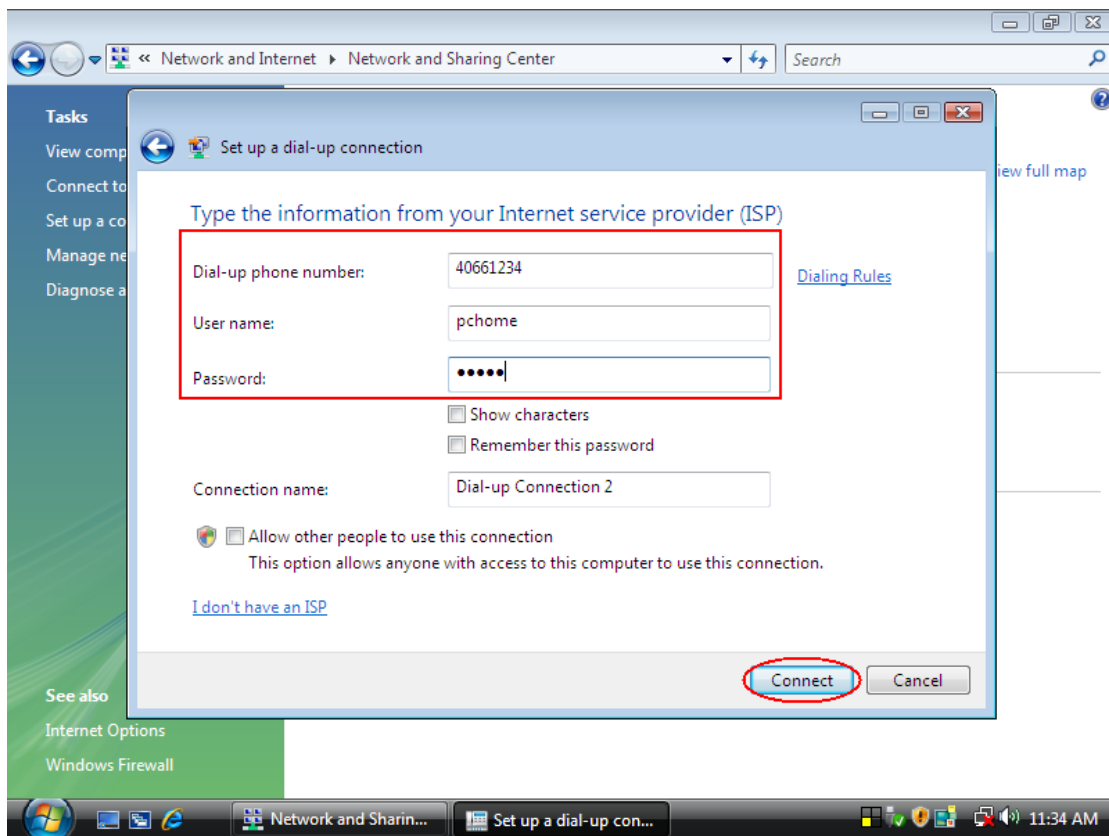
2. click **Set up a connection or network**



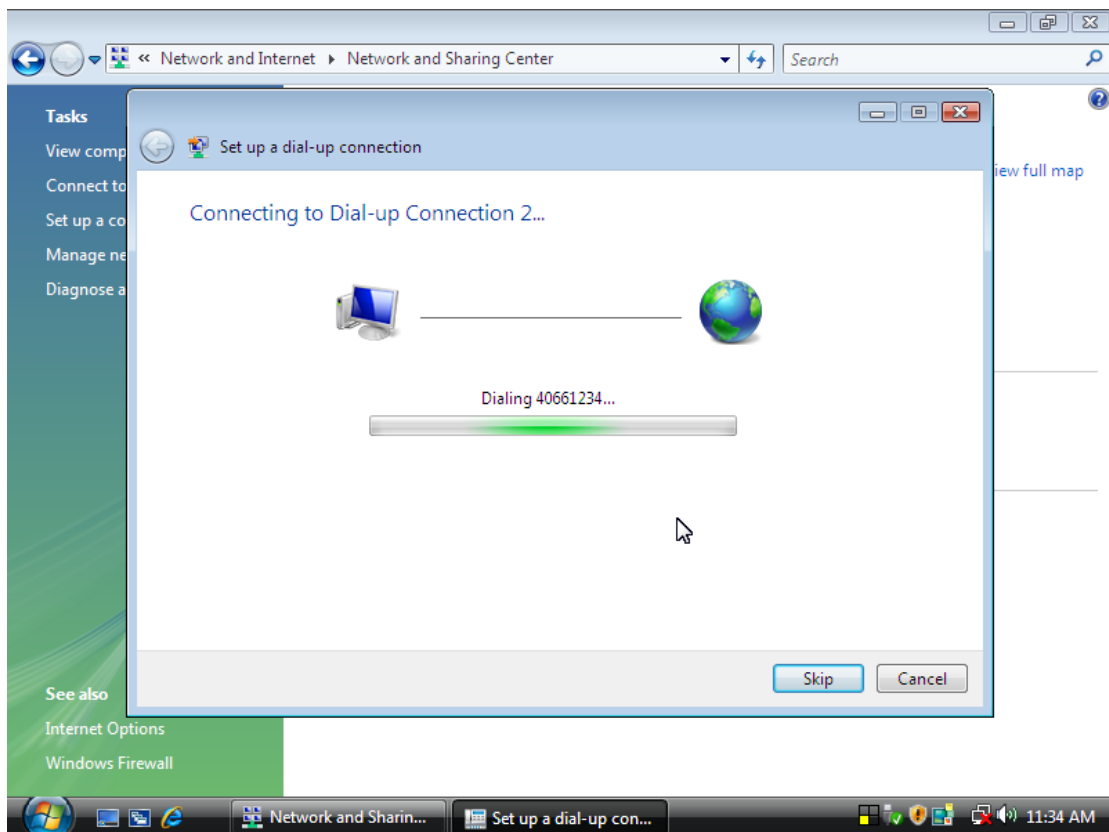
3. Select **Set up a dial-up connection** then click **Next**

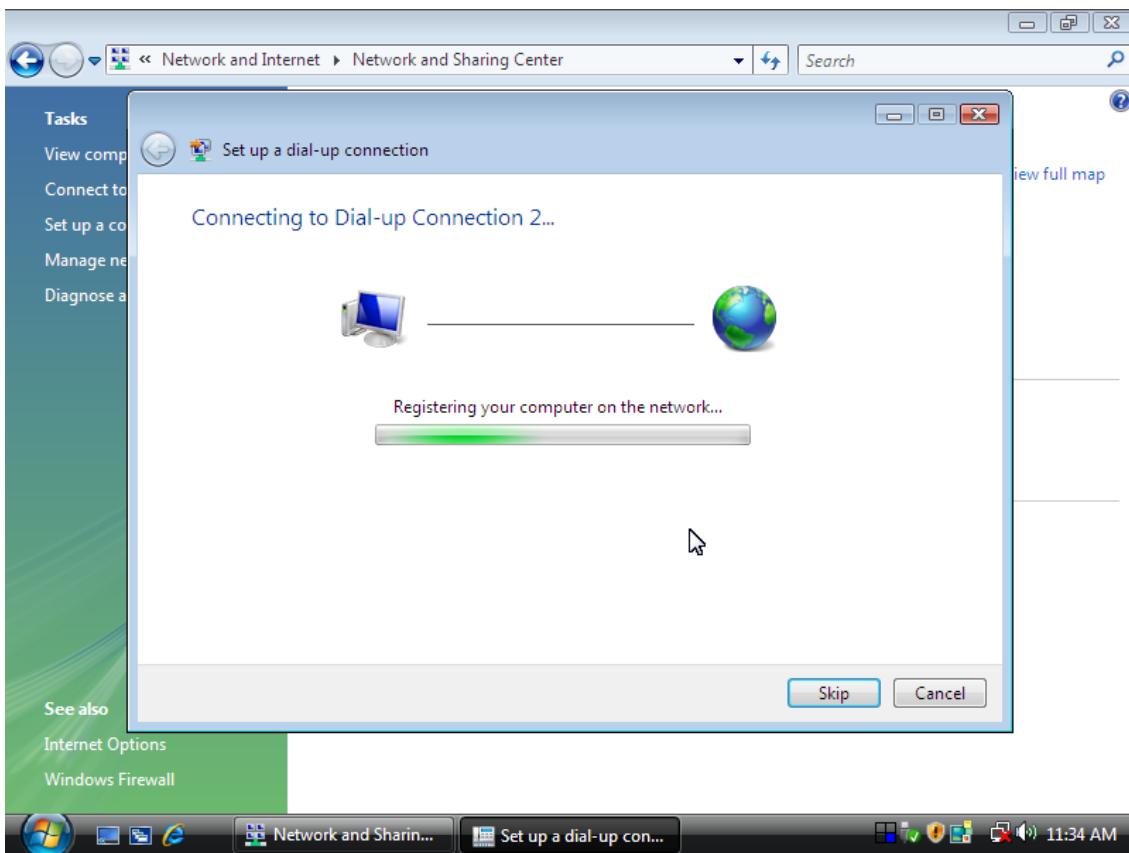
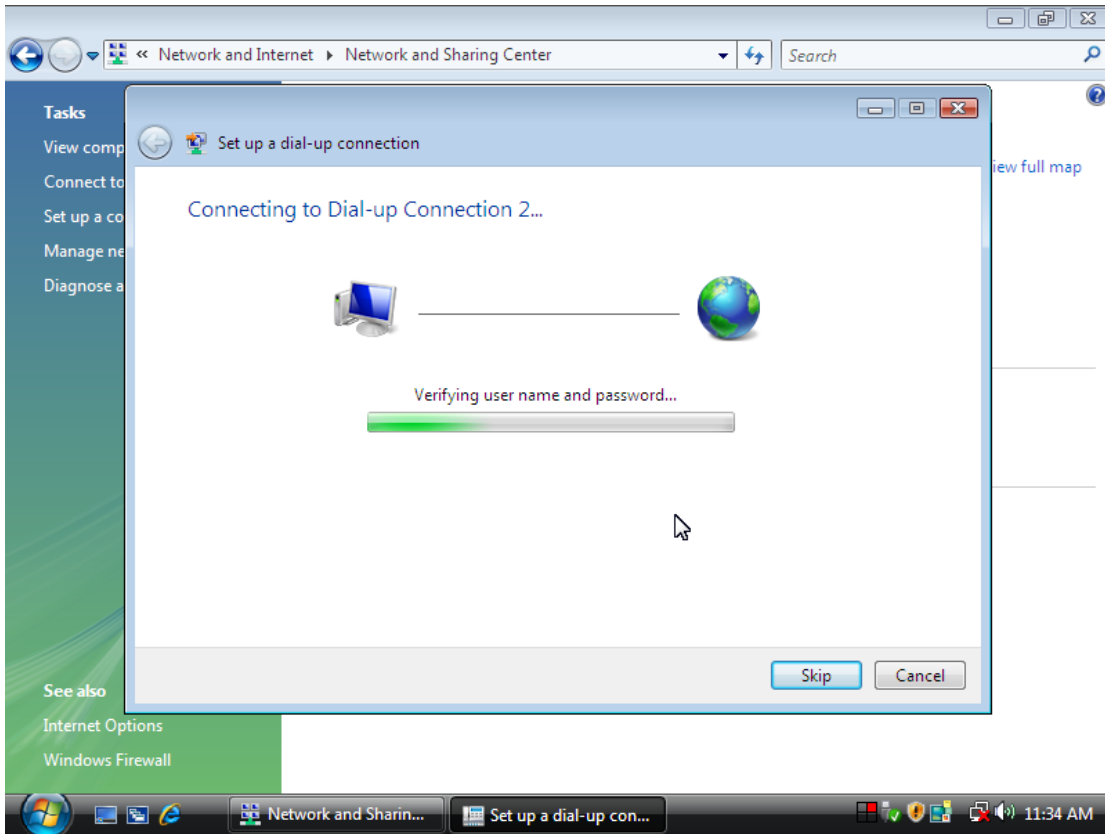


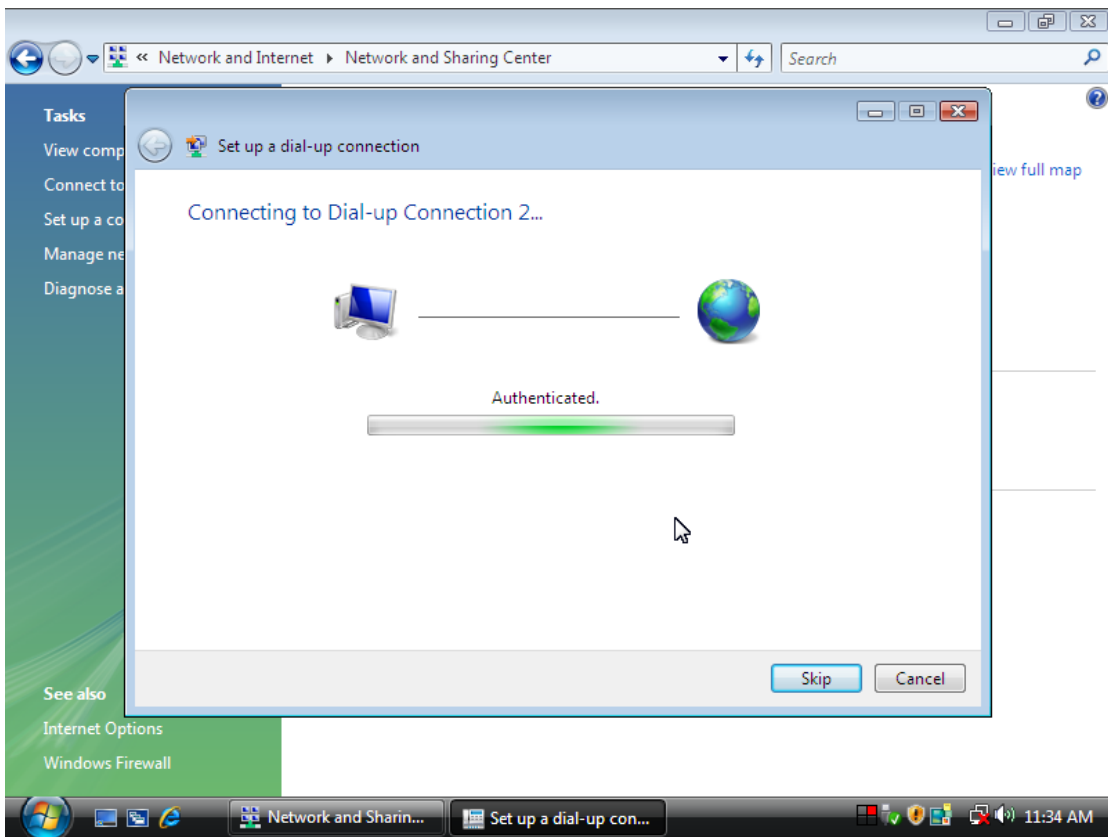
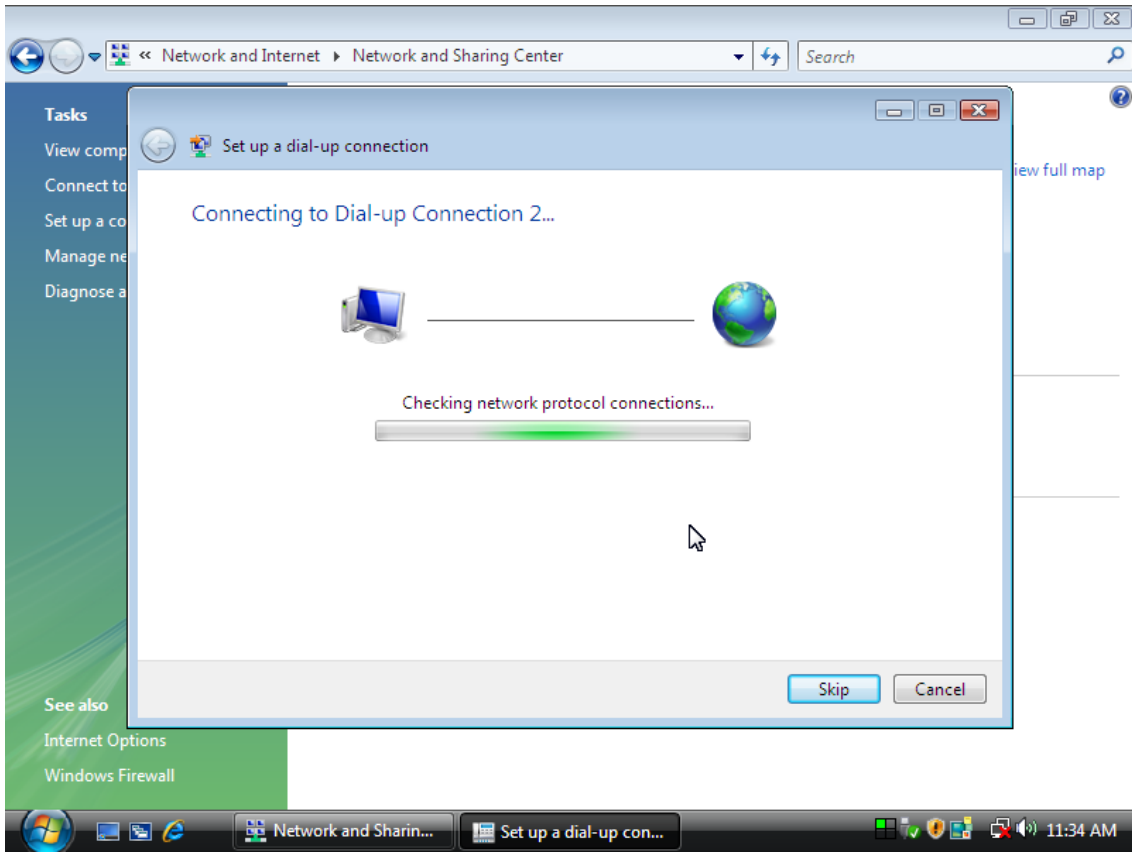
4. Input **Dial-up phone number**, **User name**, **Password** then click **Connect**



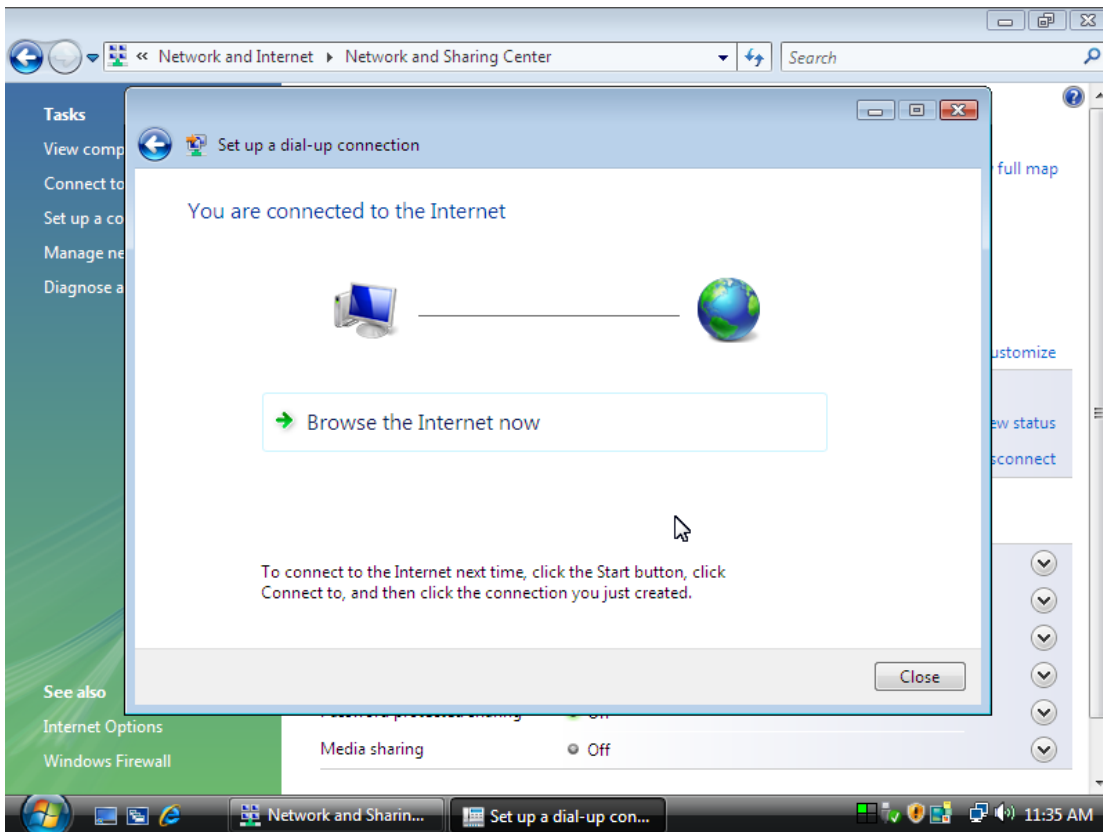
5. Waiting for Dial-up Connection. System will complete the other steps automatically.







6. Once this screen pops out, the internet is connected successfully.

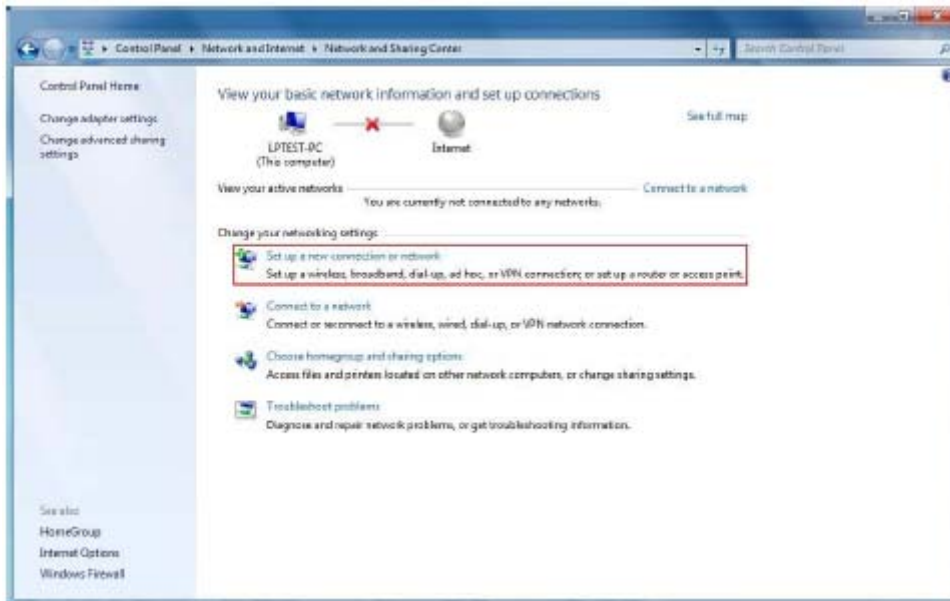


Manual Dial-up Connection Settings (For 7)

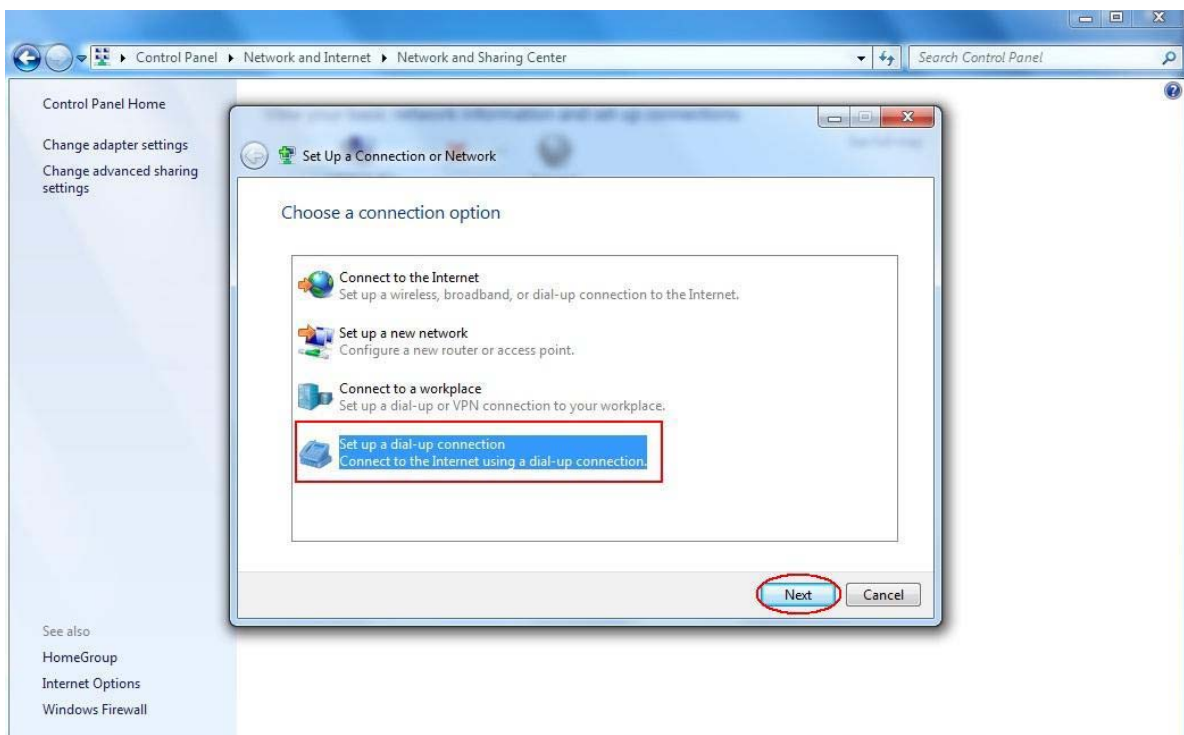
1. Open control Panel and click **view network status and tasks**



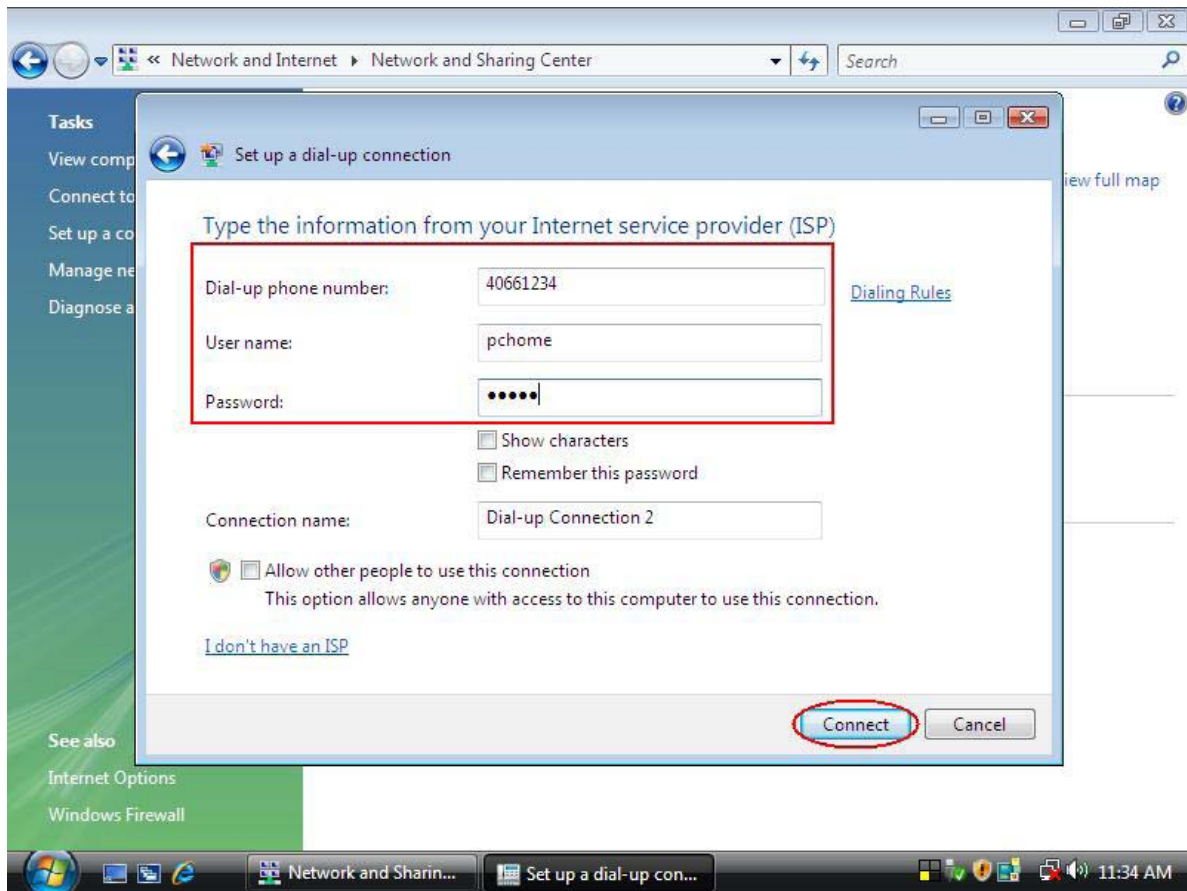
2. Click **Set up a connection or network**



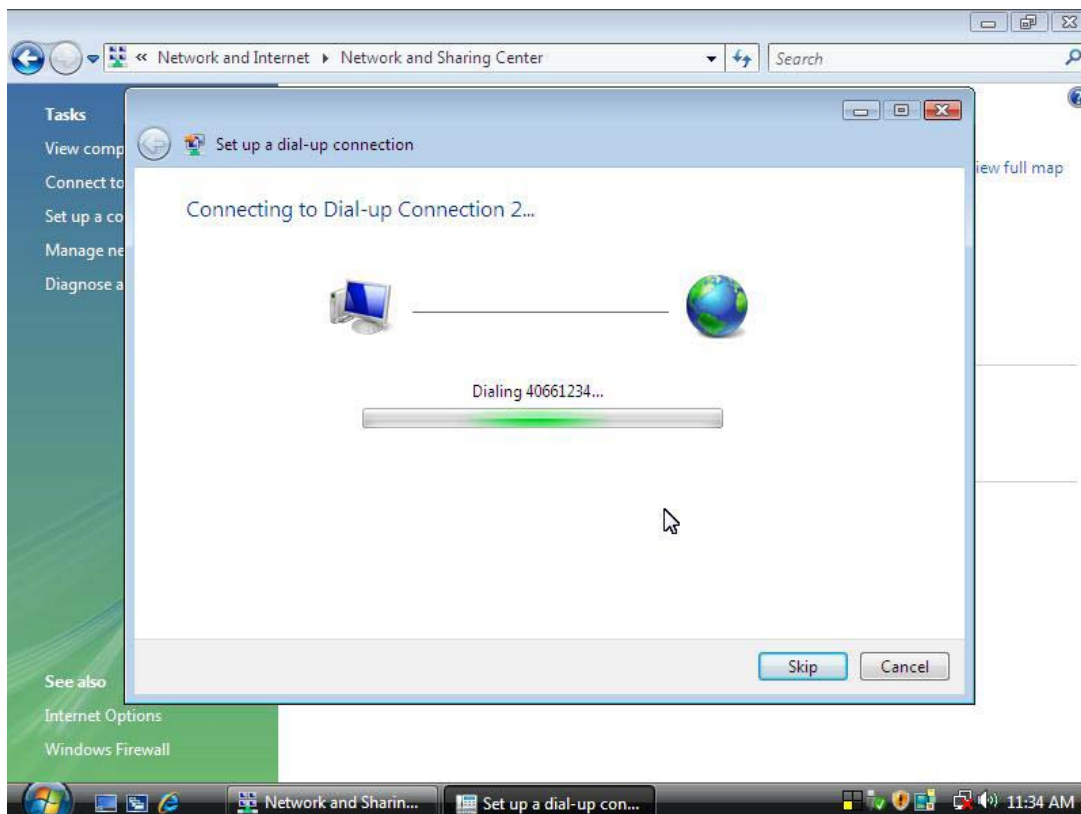
3. Select **Set up a dial-up connection** then click **Next**

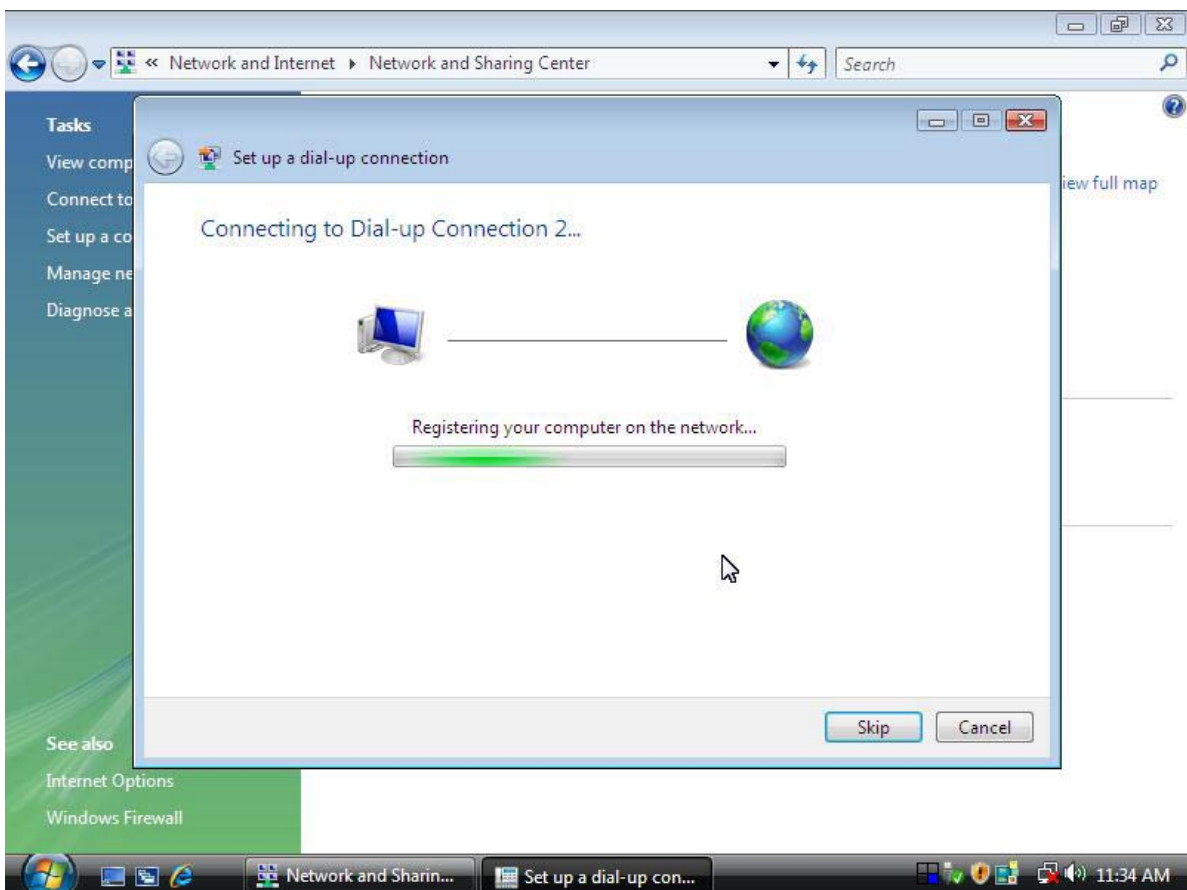
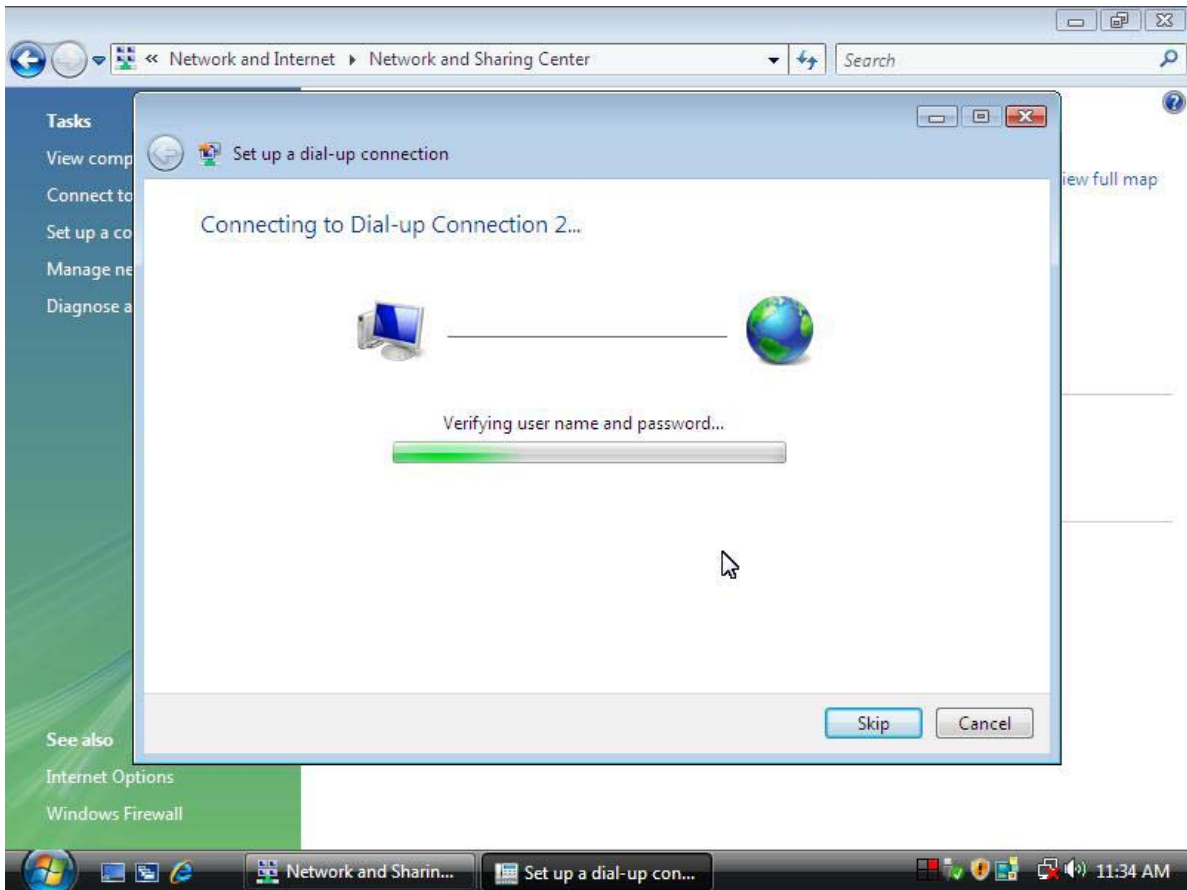


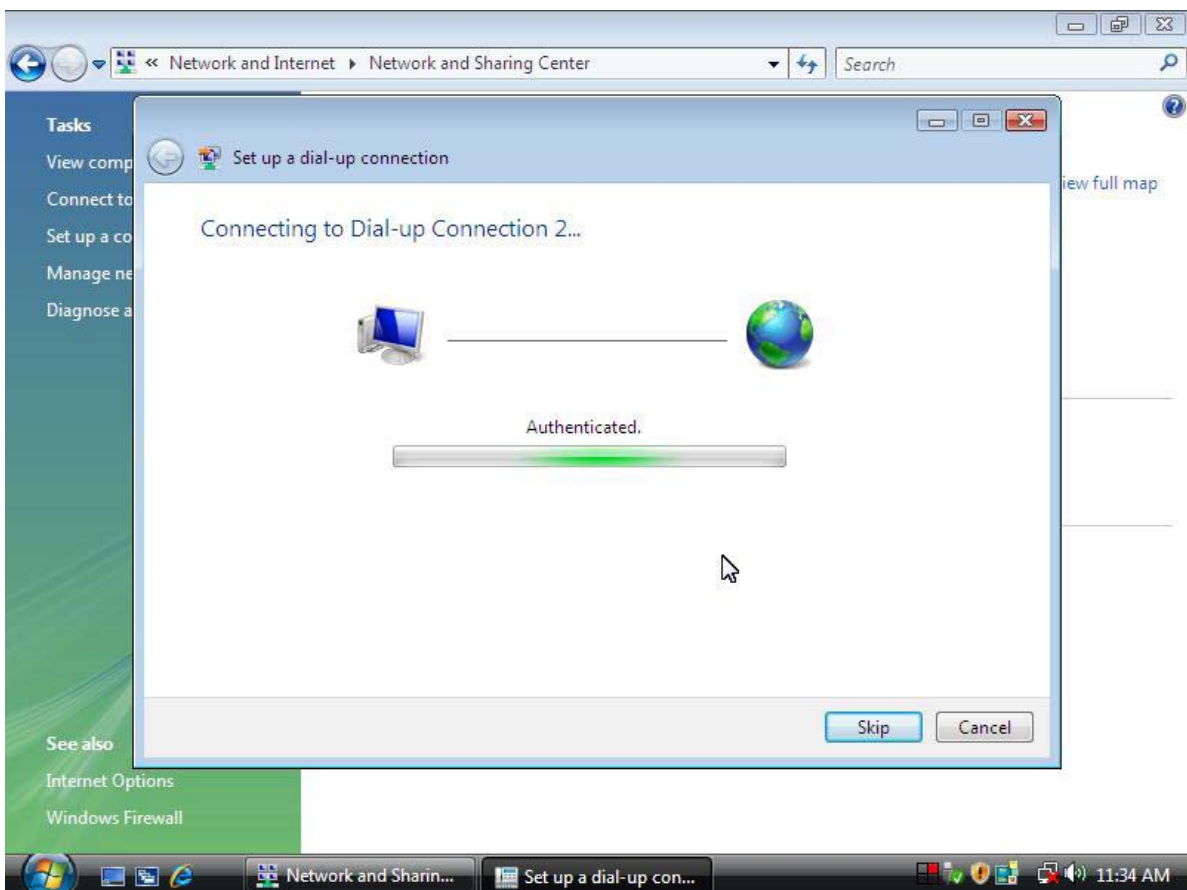
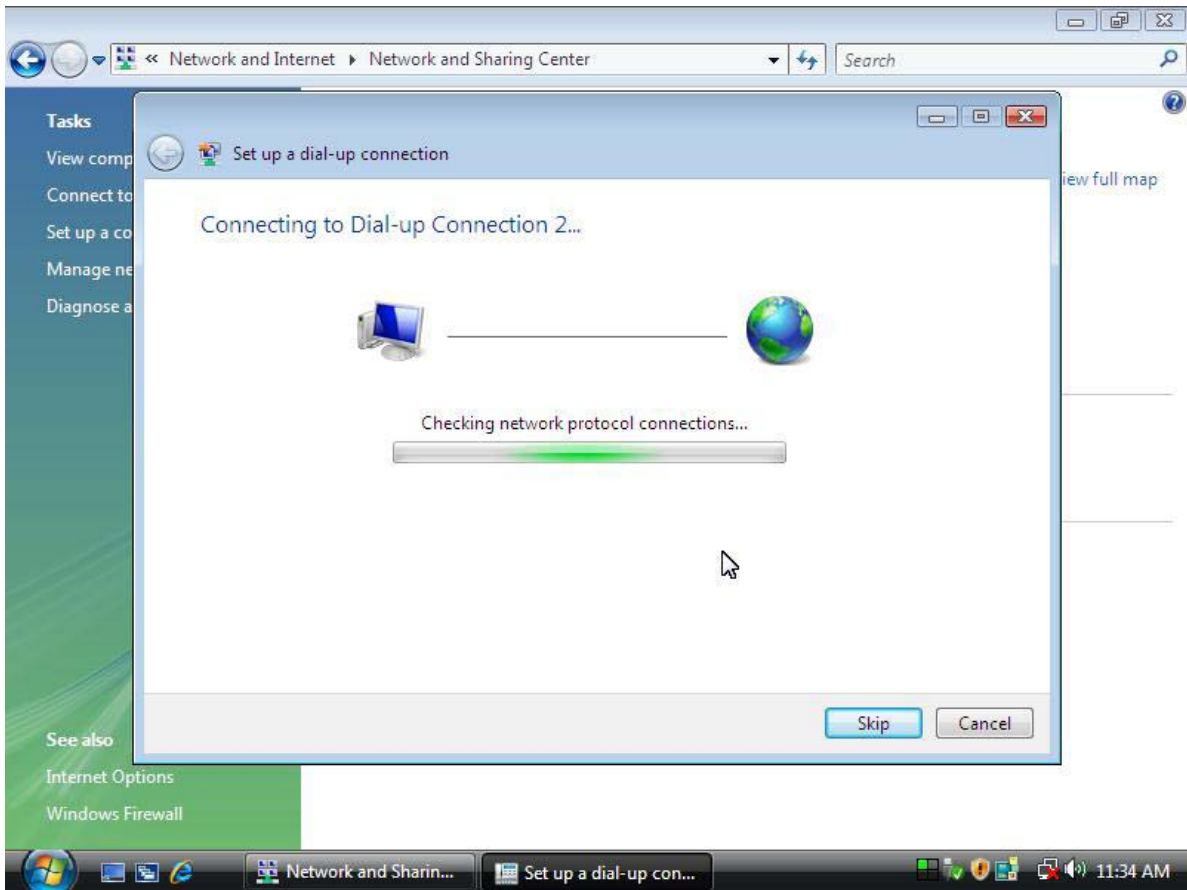
4. Input **Dial-up phone number, User name, Password** then click **Connect**



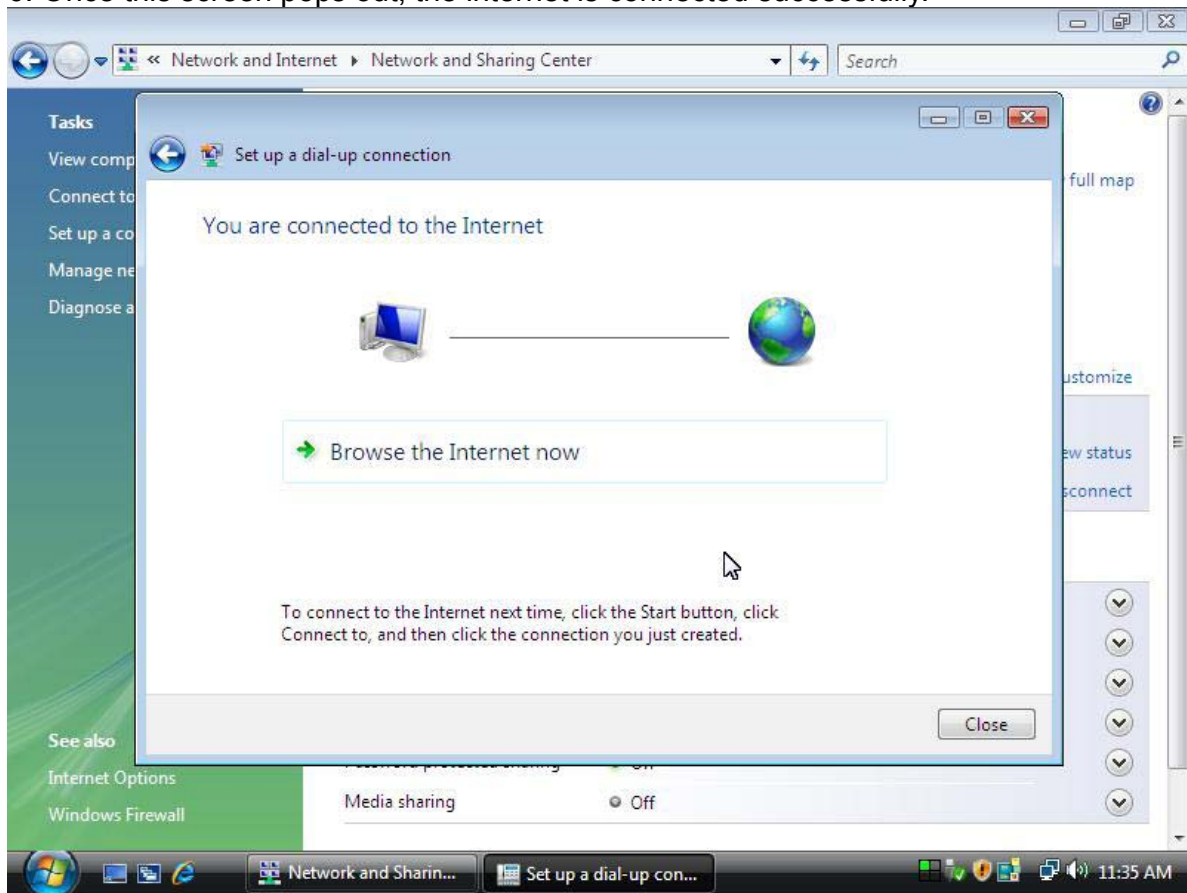
5. Waiting for Dial-up Connection. System will complete the other steps automatically.







6. Once this screen pops out, the internet is connected successfully.



Thank you for purchasing a quality Rosewill Product.

Please register your product at: www.rosewill.com for complete warranty information and future support for your product.

Free Manuals Download Website

<http://myh66.com>

<http://usermanuals.us>

<http://www.somanuals.com>

<http://www.4manuals.cc>

<http://www.manual-lib.com>

<http://www.404manual.com>

<http://www.luxmanual.com>

<http://aubethermostatmanual.com>

Golf course search by state

<http://golfingnear.com>

Email search by domain

<http://emailbydomain.com>

Auto manuals search

<http://auto.somanuals.com>

TV manuals search

<http://tv.somanuals.com>