



Wireless N Dual Band Adapter N900UBE

Quick Installation Guide



Safety Information:

In order to keep the safety of users and your properties, please follow the following safety instructions:

1. This USB wireless network card is designed for indoor use only. DO NOT expose this network card to direct sun light, rain, or snow.
2. DO NOT put this network card at or near hot or humid places, like kitchen or bathroom. Also, do not left this wireless network card in the car in summer.
3. This network card is small enough to put in a child's mouth, and it could cause serious injury or could be fatal. If they throw the network card, the card will be damaged. PLEASE KEEP THIS NETWORK CARD OUT THE REACH OF CHILDREN!
4. This network card will become hot when being used for long time (***This is normal and is not a malfunction***). DO NOT put the network card on a paper, cloth, or other flammable objects after the network card has been used for a long time.
5. There's no user-serviceable part inside the network card. If you found that the network card is not working properly, please contact your dealer of purchase and ask for help. DO NOT disassemble the network card by yourself, warranty will be void.
6. If the network card falls into water, DO NOT USE IT AGAIN BEFORE YOU SEND THE CARD TO THE DEALER OF PURCHASE FOR INSPECTION.
7. If you smell something strange or even see some smoke coming out from the network card, switch the computer off immediately, and call dealer of purchase for help.

Overview

Thank you for purchasing Rosewill's N900UBE. This is an extremely high-speed 802.11a/b/g/n dual band wireless network USB Adapter. This wireless network adapter is transferring data at a transfer rate of 450Mbps at both 2.4GHz and 5GHz.

N900UBE with an easy-to-install USB 2.0 interface and external antenna, setting up this wireless adapter will be just as easy!

1.1 Package Content

Before getting started, please verify that your package includes the following items:

1. Rosewill N900UBE Wireless Dual Band USB Adapter x 1
2. Quick Installation Guide x 1
3. Resource CD x 1, including:
 - Wireless Utility and Driver
 - User Manual
 - Quick installation guide x 1

Note:

Make sure that the package contains the above items. If any of the listed items are damaged or missing, please contact with your distributor.

1.2 System Requirement

You must have at least the following

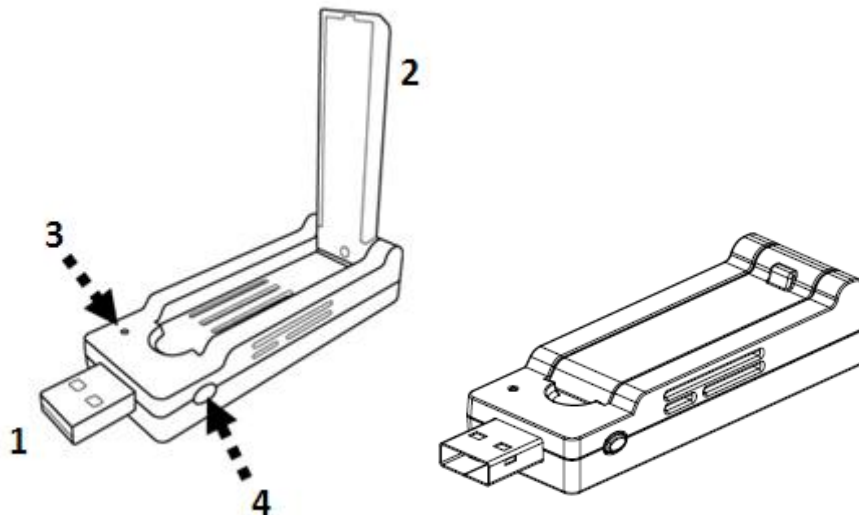
- A desktop PC or Notebook with An empty USB 2.0 port (May not be able work with USB 1.1 port, performance will be greatly reduced)
- At least a 300MHz processor and 32MB of memory
- Windows OS for WinXP, Vista, and 7 or Mac OS 10.5, 10.6, 10.7
- At least 100MB of available disk space
- A CD-ROM Drive
- A 802.11n · 802.11g or 802.11a/b Wireless (and Dual Band) Access Point/Router (for infrastructure Mode) or another 802.11n · 802.11g or 802.11b wireless (and Dual Band) adapter (for Ad-Hoc; Peer-to-Peer networking mode).

Installation Guide

2.1 Hardware Diagram

1. USB Connector

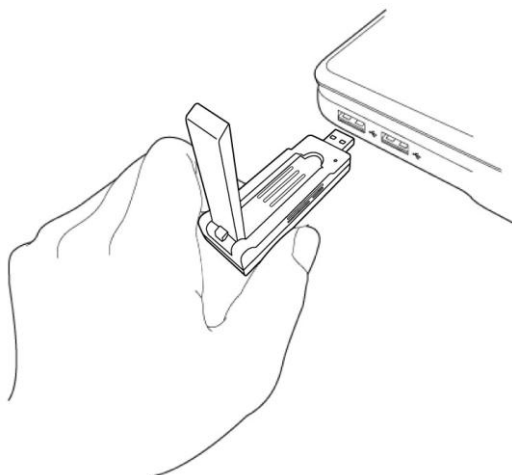
2. External Wireless Antenna
3. Link/Activity LED
4. WPS Button (Press to activate WPS pairing mode)



2.2 Dual Band Wireless Adapter Driver and Utility Installation

Please follow the following instructions to install your new wireless network card:

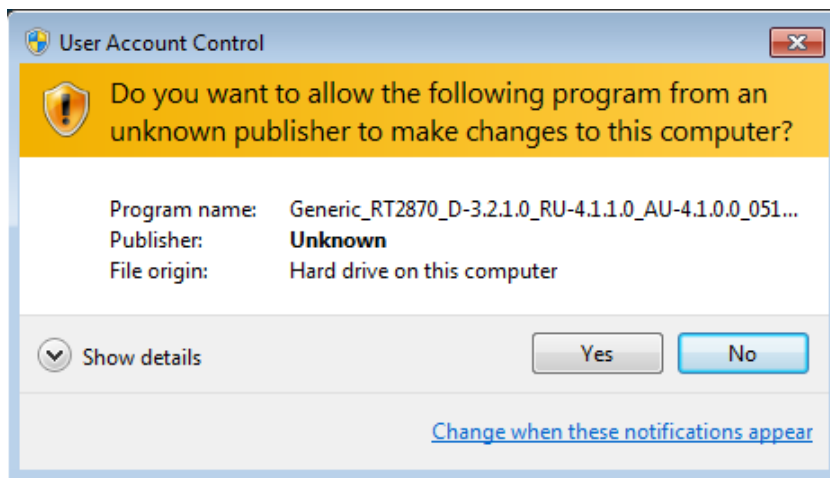
1. Insert the USB wireless network card into an empty USB 2.0 port of your computer when computer is switched on. Never use force to insert the card, if you feel it's stuck, flip the card over and try again.



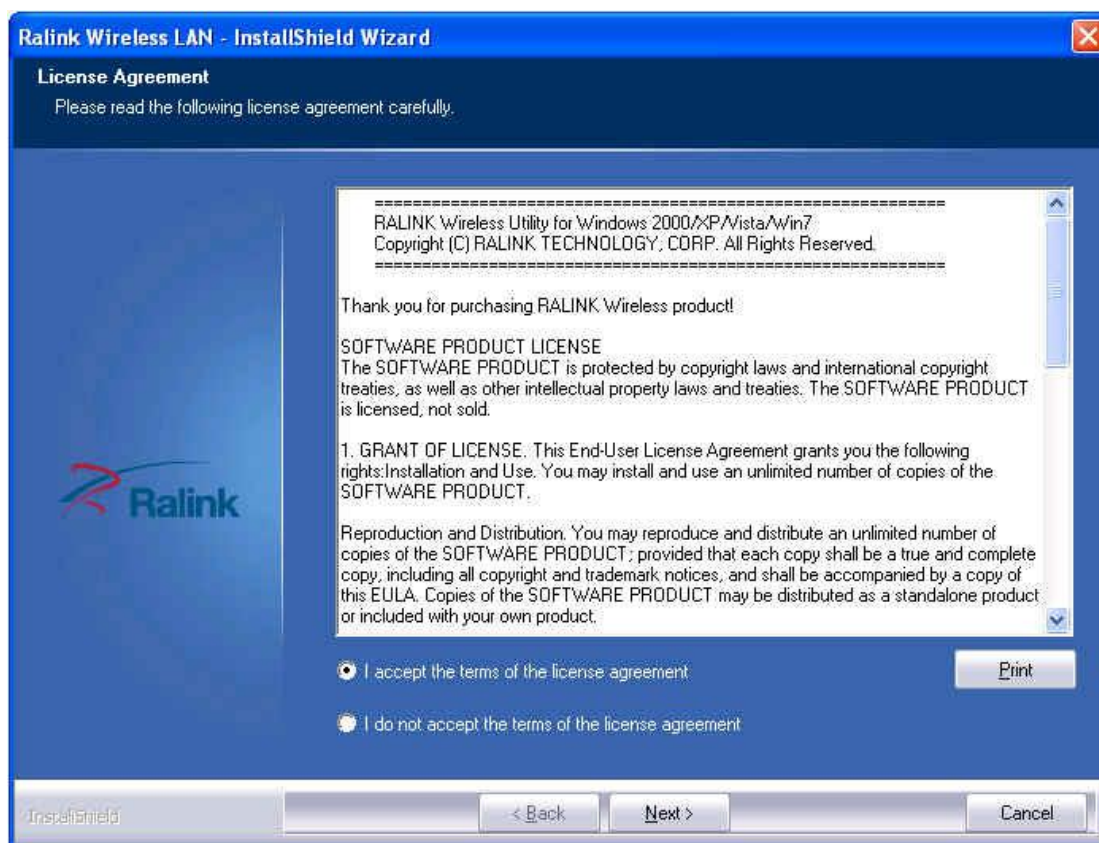
2. Insert device driver CDROM into the CD/DVD ROM drive of your computer, and execute '**Setup.exe**' program in 'Driver' folder.



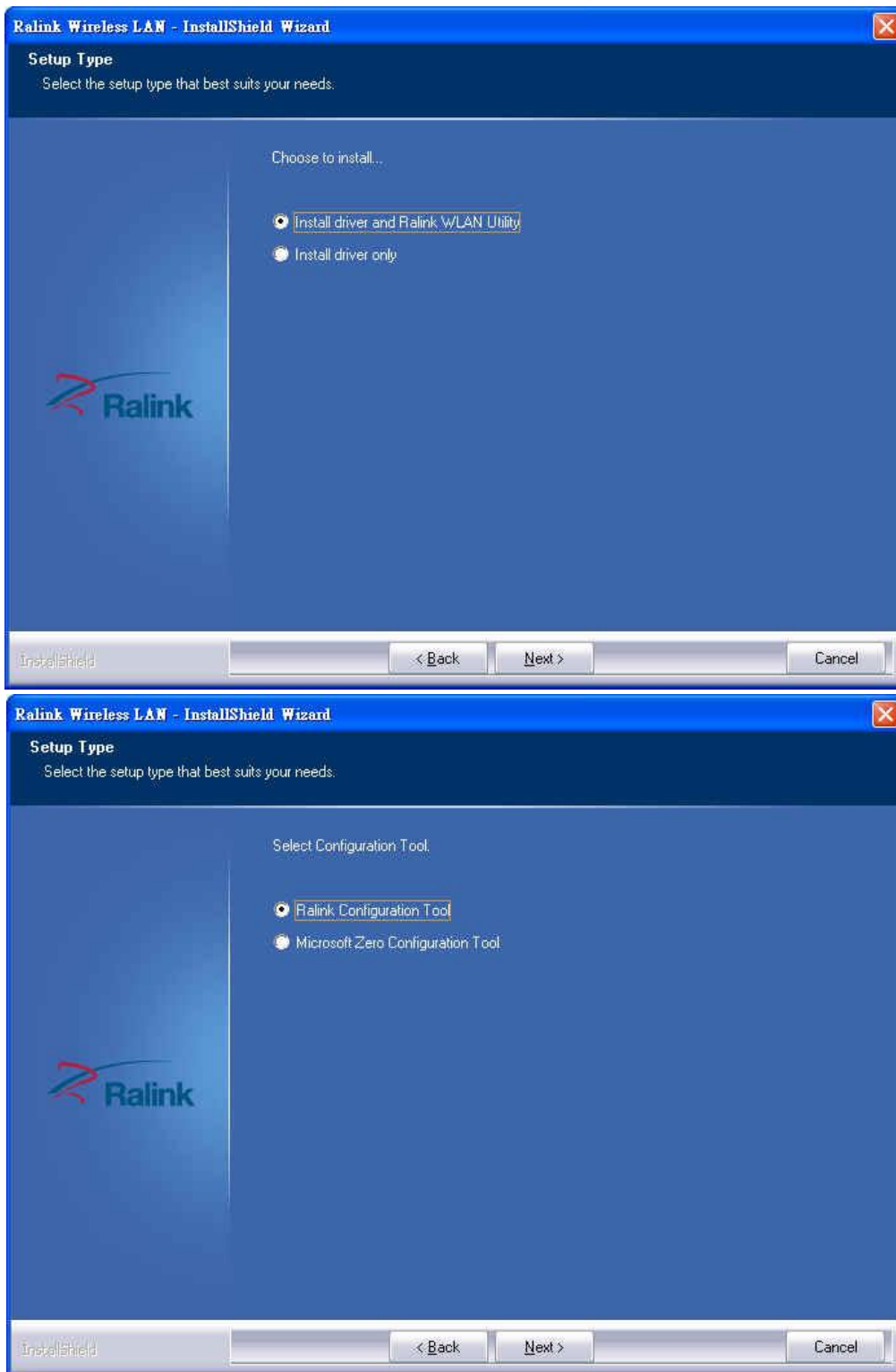
- On Windows Vista / Windows 7 computer, you may see UAC (User Account Control) window popup to warn you that this program is going to make changes to your computer, click 'Yes' to continue.



- Please select "I accept the terms of the license agreement", and then click 'Next'

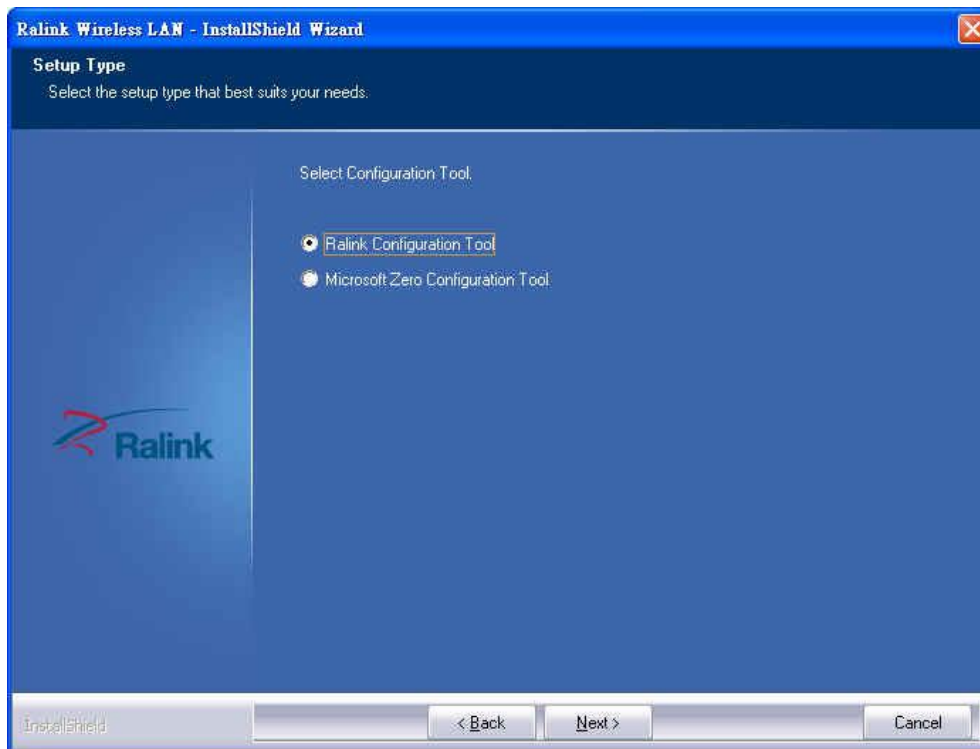


- Select 'Install driver and Ralink WLAN Utility' and click 'Next' to continue. Optionally, you can select 'Install driver only' to install wireless network card driver only, and use Windows' built-in wireless manager.
If you don't know which one you should choose, select 'Install driver and Ralink WLAN Utility' for maximum functionality.



(Windows XP Only)

6. Select the wireless configuration utility you wish to use, then click '**Next**' to continue. It's recommended to select '**Ralink Configuration Tool**' for maximum functionality. If you used to use Windows' built-in configuration tool, select '**Microsoft Zero Configuration Tool**'.

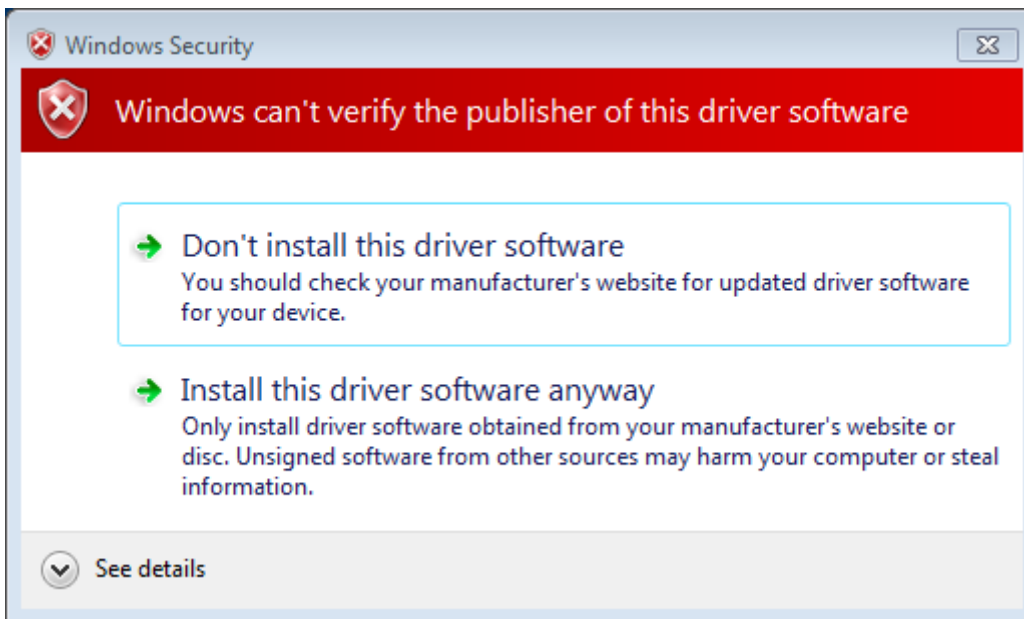


(Windows XP Only)

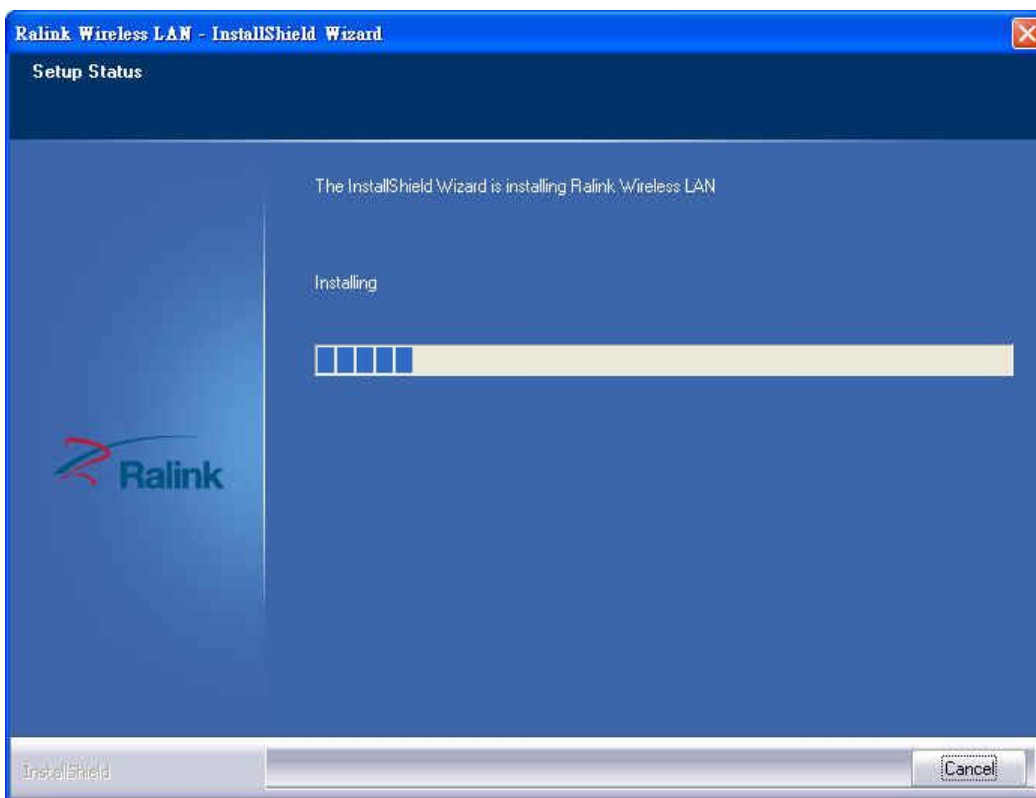
7. Click **'Install'** to continue.



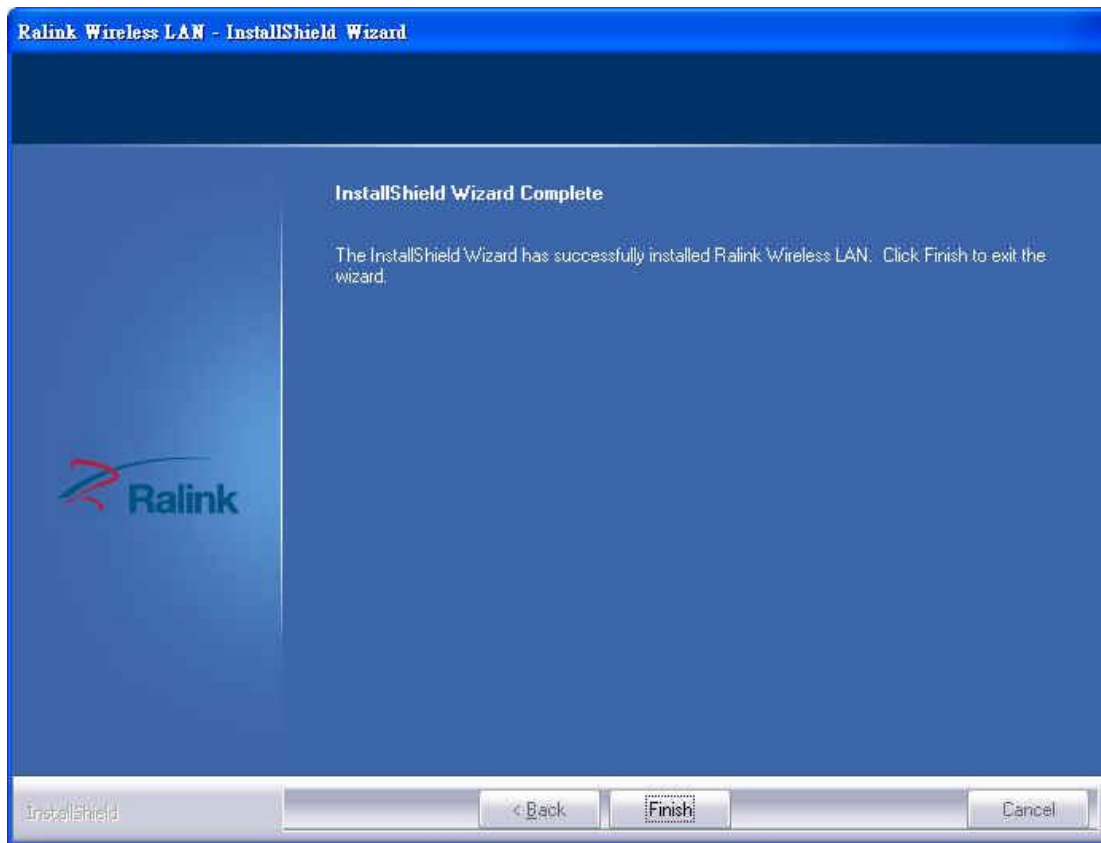
Please note: If you see this message, click 'Install this driver software anyway' to continue.



8. Please be patient while installation is in progress, this may require few minutes.



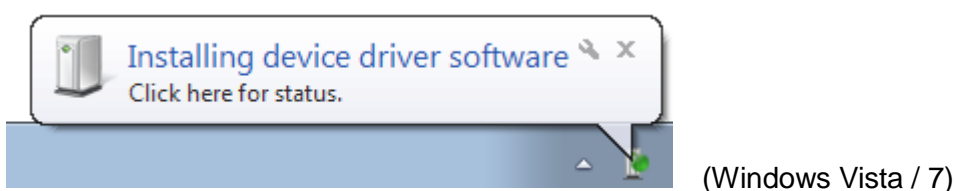
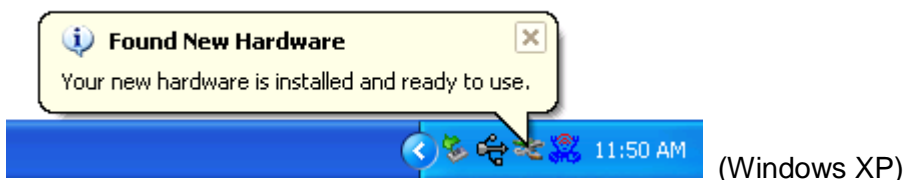
9. Click 'Finish' to finish installation procedure.



10. Please insert your USB wifi network card to any empty USB port now. A popup message indicating that your computer found '802.11n USB Wireless LAN Card' will appear. Please be patient while Windows is installation driver.

This message will only appear when you insert the USB wifi network card to your computer's USB port, or you insert the network card to a different USB port of your computer.

11. You should be able to see this popup message, indicating your new USB network is ready to use; If not, please either try to re-install driver, or insert the network card to another USB port of your computer.








12. A new icon will appear near the clock of system tray:



HERE!

Left-click the icon will launch wireless network configuration utility, and you can right-click the icon to show the quick menu of configuration utility.

This icon uses 5 colors to represent current network status:

 (Green)	The Wireless Adapter established, signal strength good
 (Yellow)	The Wireless Adapter established, signal strength normal
 (Red)	The Network connection established, signal strength poor
 (Blue)	The Network connection is not yet established
 (Black)	The Wireless Adapter is not found on your computer

Wireless Connection Guide

This chapter describes how to configure your Adapter for wireless connectivity on your Wireless Local Area Network (WLAN) and use the data security encryption features.


After Installing the Adapter, the Adapter's tray icon will appear in your system tray. It appears at the bottom of the screen, and shows the signal strength using color and the received signal strength indication (RSSI).

In the following instruction for making a network connection, we use the provided Utility to configure your wireless network settings.

Note: You could use either the software we provide or Microsoft Zero Configuration tool to configure this adapter.

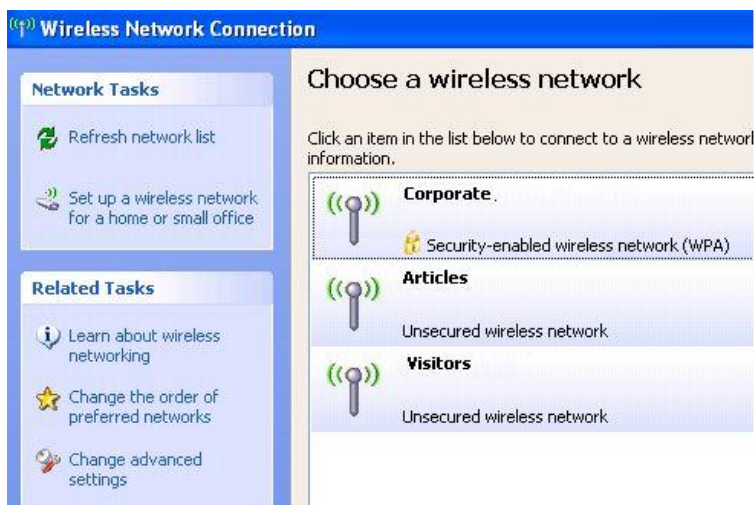
3.1 Connecting with Microsoft Zero Configuration tool (Win XP)

- After specifying the Microsoft Zero Configuration tool to configure your wireless network,

right click on the  icon on system tray. Select “**View Available Wireless Networks**” to specify your wireless network.



- The tool shows the available wireless networks. Select your demanding network to connect with.



- If prompted, enter the password/network key for your wireless network and click the Connect button.





3.2 Connecting with Window Vista and Windows 7

You can easily access to wireless with Win Vista and Win7. First, move your mouse to lower right hand corner as below and click on the icon where arrow pointing to.



Click **Refresh** to get an update of your Wireless Network Connection. This should help you search the SSID of the network you want to connect to.



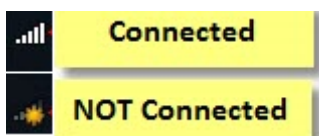
Select your desired SSID, then Click "Connect".



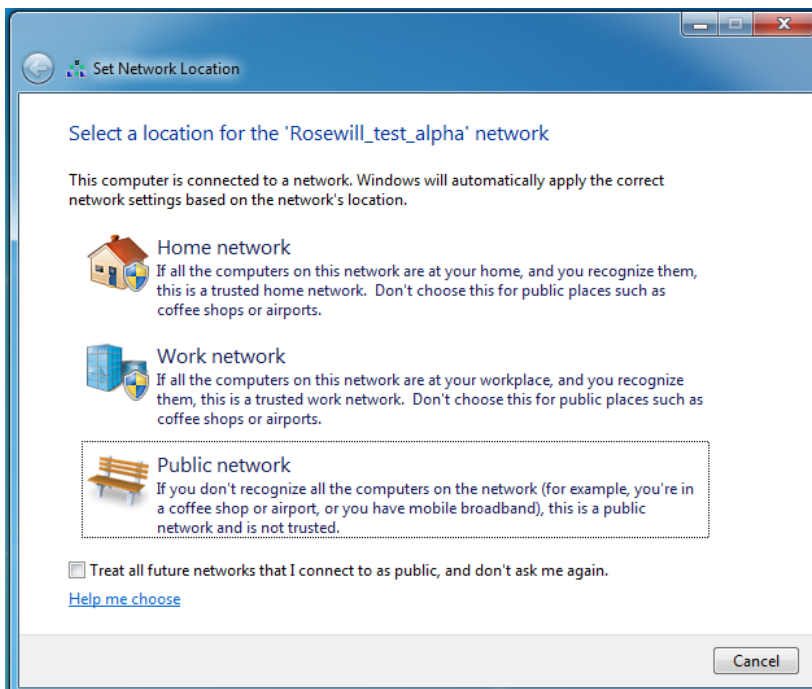
You will be prompt to ask you entering the network security key. Once entered, please click OK to complete.




You should see below in a very short period and find out whether you are connected or now.

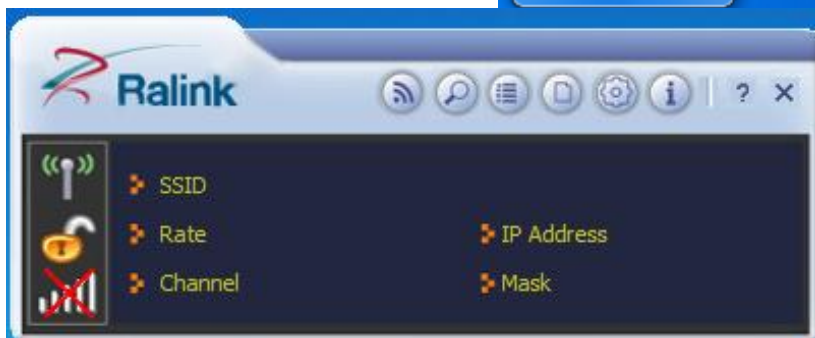
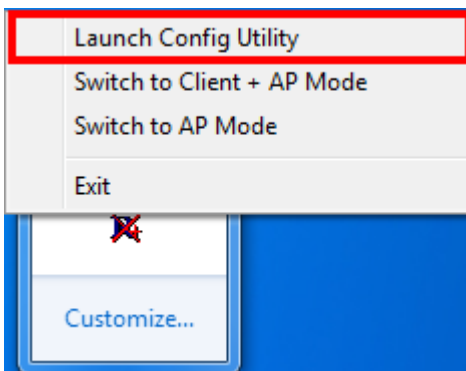


If this is your first time connect, you will see a window show up and ask you for setting up Network Location. Please select the location based on your internet usage.









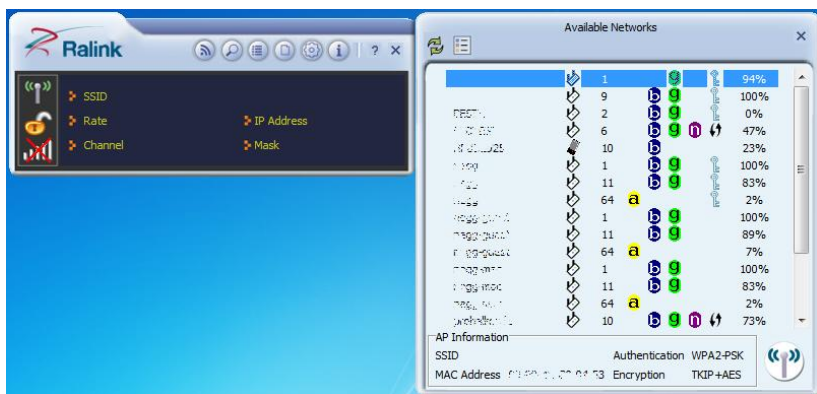
3.3 Connecting with Ralink Wireless Utility


We also provide a Ralink Wireless Utility for users to connect to a wireless network easily. It provides more information and configuration for this adapter. As default, the Utility will start automatically if you select “Install driver and Ralink WLAN Utility” when installing drivers. You can find this icon  and double click to start it on the lower right hand corner of your computer desktop. Or you can **right click** the tray icon and select **Launch Config Utility**.





This is the startup window of the Ralink Wireless Utility
Here is each button's function:

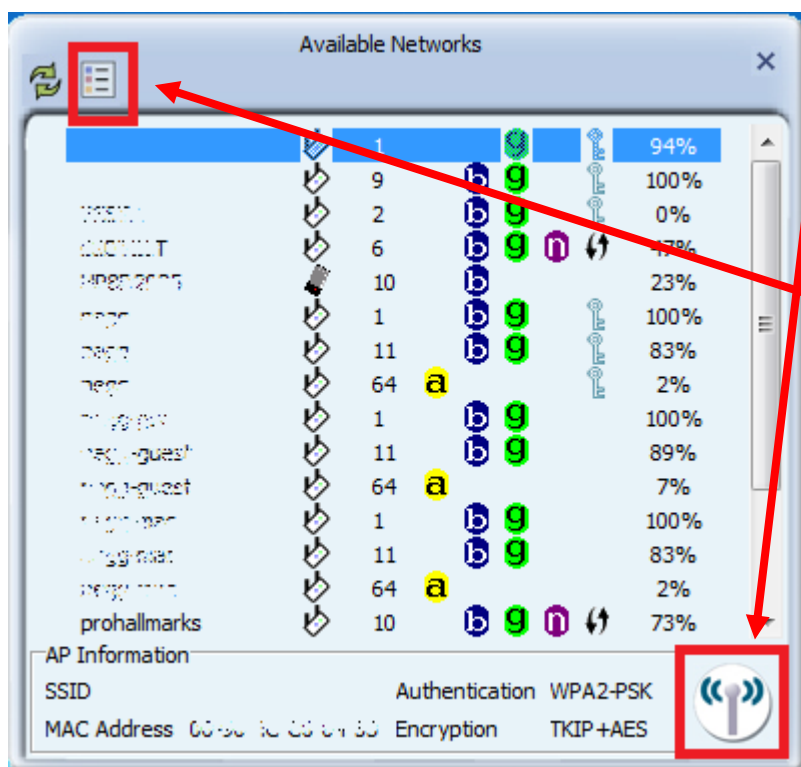
	Wi-Fi Direct (will appear only if your computer can support this function)
	Site Survey
	Link Information
	Profile
	Advanced
	About




Please first start by selecting  to search nearby wireless signal for connection.

When click on , a window will popup and presents to you the nearby Wi-Fi Signals.

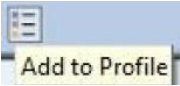
If you did not see the signal you want to connect, please click  to rescan.



One time connection:

Please first highlight your desired SSID, then click . Then follow the popup window's direction to connect. ([Please see for detail](#))

Setup the Profile for all future connection:

Please click  to add the SSID to profile for all future use. For detail, please follow [Add/Edit Profile](#).

Now you have completed the setup of your wireless network. You should be ready to surf!

For advanced settings and other features of this USB wireless network card, please refer to user manual enclosed in supplied CD-ROM.

Thank you for purchasing a quality Rosewill Product.

Please register your product at: www.rosewill.com for complete warranty information and future support for your product.

Let us know!

Rosewill Support: techsupport@rosewill.com

Call Center: (800) 575-9885

Web: <http://www.rosewill.com>

Free Manuals Download Website

<http://myh66.com>

<http://usermanuals.us>

<http://www.somanuals.com>

<http://www.4manuals.cc>

<http://www.manual-lib.com>

<http://www.404manual.com>

<http://www.luxmanual.com>

<http://aubethermostatmanual.com>

Golf course search by state

<http://golfingnear.com>

Email search by domain

<http://emailbydomain.com>

Auto manuals search

<http://auto.somanuals.com>

TV manuals search

<http://tv.somanuals.com>