



**2-Serial/1-Parallel Port PCI Adapter RC303**  
User Manual

## Overview

This PCI I/O card is a dual UART with 1284 printer interface port controller with PCI bus interface and uses an all-in-one solution from NeMos Technology, which provides superior performance and unmatched data transfer rates. The most advanced feature is it uses of a single interrupt, which is set automatically by the host system and share among all on-board I/O ports and supports printer interface as well as PS2, EPP & ECP modes.

## Features

- Chipset: NetMos Nm9835
- OS power: Single 5V operation
- Bus: PCI 2.1s 32bit, 33MHz
- Data Transfer Rate: 1Mbytes/s (serial port)
- Data Transfer Rate: 1.5Mbytes/s (parallel port)
- Selectable receive trigger levels
- PCI compatible Dual UART
- Multi-mode compatible controller (SPP, PS2, EPP& ECP)
- Modem control signals
- On chip oscillator
- 16Byte transmit-receive FIFO (UART)
- Software programmable mode selects
- Programmable baud rate generator
- Support plug & play features and makes installation fast and easy.
- Supports Windows98, Windows95, Windows2000 & Windows NT 4.0.

## Installing the PCI I/O controller card into your computer

Turn off your computer and all external devices connect it.

Remove the computer's cover. Refer to your computer user's manual for more details.

Find an available PCI slot and remove the metal bracket. Save the bracket screw for later use.

Align the PCI I/O controller horizontally with respect to the PCI slot and insert it into the slot firmly and evenly. Take care not to force it into the slot. Once you have properly positioned the PCI I/O controller card into the slot, fasten it to the computer case with the bracket screw you have saved.

Replace the computer's cover.

Turn your computer on. You are now read to install the driver!

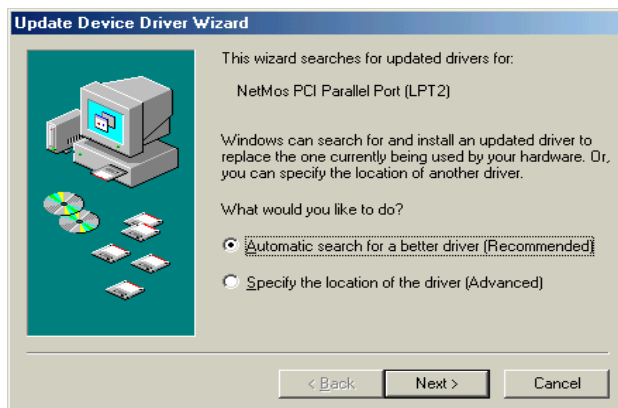
## Driver Installation

Windows 95/98/2000

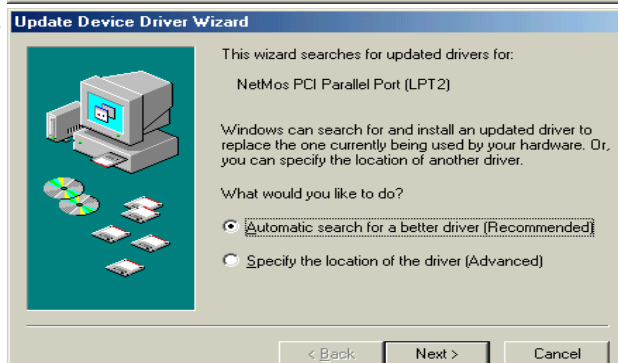
Once the PCI I/O card is installed and the computer is restarted, Windows will detect the board and attempt to install driver for it.

Start Windows 95/98/2000/XP.

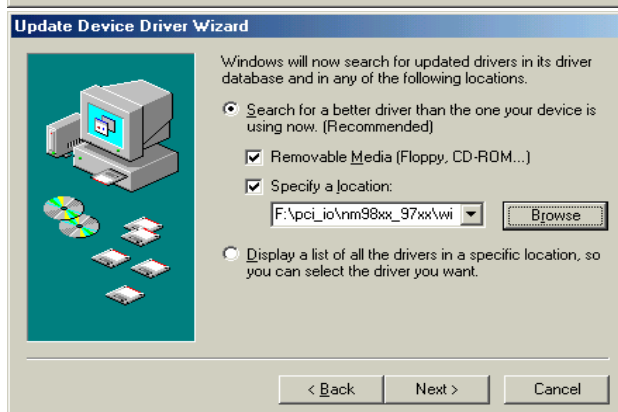
The "Update Device driver Wizard" will appear, informing you that it has found a "PCI I/O Card". Click the "Next" button.



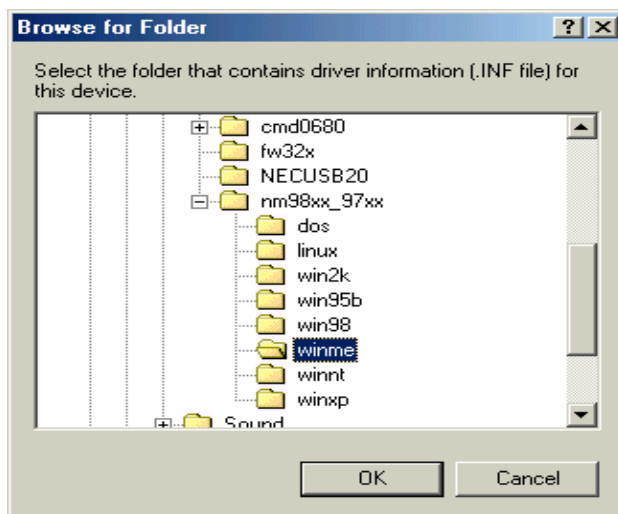
Click "Other Location" for Windows 95 or "Specify a location" for Windows 98 to install the driver.



Insert the driver CD in CD-ROM drive (D) and click on the "Browse" button.



Windows 98/95/2000 will automatically locate the driver in the driver diskette. Click the "OK" button to continue.



Click on the finish button to start copying files from driver diskette..

Windows 98/95/2000 will automatically restart in order to update the hardware configuration. Once Windows 98/95/2000 has restarted, you can now connect your external devices to the PCI I/O card. To install the driver for the external devices, please refer to the external device user's manual.

#### Windows NT 4.0

- Make sure Windows NT 4.0 is properly installed into your system first.
- Start Windows NT.
- Insert Windows NT 4.0 driver diskette (disk 2) into the floppy drive.
- Select "RUN" option in Windows NT.
- At the "RUN" option, click on the "Browse" button.
- At the Browse for Folder window:
- Select "Floppy (A)"
- Double click on the winnt folder
- Select NetMosXXX drivers.exe
- Click on the Open button
- Finally, click the "OK" button
- Follow the instructions to finish up the driver installation. Your system will automatically restart in order to complete the driver installation.
- Installing DOS Driver
- Copy "NMDOSIN.EXE" to your hard disk and run "NMDOSIN.EXE"
- Update Drivers
- Please visit this website: <http://www.rosewill.com/> for all the latest drivers for your PCI I/O card.

Thank you for purchasing a quality Rosewill Product.

Please register your product at : [www.rosewill.com/](http://www.rosewill.com/) for complete warranty information and future support for your product.

## Free Manuals Download Website

<http://myh66.com>

<http://usermanuals.us>

<http://www.somanuals.com>

<http://www.4manuals.cc>

<http://www.manual-lib.com>

<http://www.404manual.com>

<http://www.luxmanual.com>

<http://aubethermostatmanual.com>

Golf course search by state

<http://golfingnear.com>

Email search by domain

<http://emailbydomain.com>

Auto manuals search

<http://auto.somanuals.com>

TV manuals search

<http://tv.somanuals.com>