



Wireless N Adapter RNX-N250PCe
Quick Installation Guide



1 Package Contents

Before getting started, please verify that your package includes the following items :

1. Rosewill RXN-N250PCE Wireless N Adapter x 1
2. 5 dBi Antenna x2
3. Low Profile Bracket x1
4. Quick Installation Guide x1
5. Resource CD x1, including :
 - > Rosewill Wireless N Utility and Driver
 - >User Manual

Make sure that the package contains above items. If any of the listed items is damaged or missing, please contact with your distributor.

2 Product Overview

The adapter is an 802.11n client device; it is designed to provide a high-speed and unrivaled wireless performance for your computer or notebook. With a faster wireless connection, you can get a better Internet experience, such as downloading, gaming, video streaming and so on. With the 802.11n technology, higher throughput improvements using MIMO (multiple input, multiple output antennas), the RXN-N250PCE's transfer rate up to 300Mbps for maximum throughput. It can also interoperate with other wireless (802.11b, 802.11g) products.

The adapter supports 64/128-bit WEP, WPA and WPA2 encryption to prevent outside intrusion and protect your personal information from being exposed.

The adapter is easy to install and manage. The Quick Setup Wizard guides you step-by-step through the installation process; the Rosewill Wireless N Client Utility helps you create a wireless connection immediately.

With unmatched wireless performance, reception, and security protection, the RXN-N250PCE is the best choice for easily adding or upgrading wireless connectivity to your notebook and computer.

3 System Requirement

You must have at least the following

- A desktop PC with an available working PCI-Express slot
- At least a 300MHz processor and 32MB of memory
- Windows OS for Win98SE, ME, 2000, XP, Vista, Win7
- A CD-ROM Drive
- A 802.11n \ 802.11g or 802.11b Wireless Access Point/Router (for infrastructure Mode) or another 802.11n \ 802.11g or 802.11b wireless adapter (for Ad-Hoc; Peer-to-Peer networking mode).

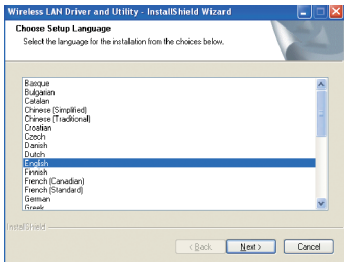
4 Driver and Hardware Installation

4.1 Driver installation of the Wireless PCI-E Adapter

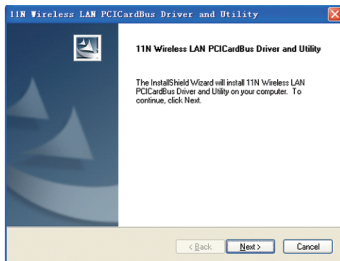
Turn on the computer and Insert the Wireless 11N PCI-E Adapter Driver CD in the CD-ROM drive. The Install Screen will appear. If not, click the Start button and choose Run and enter D:\autorun.exe (if 'D' is the letter of your CD-ROM drive)

Select Drivers, choose the modem of your product and operate according to the instruction. The following is the step-by-step instructions in Windows XP. The steps and screens are similar for the other Windows operating systems.

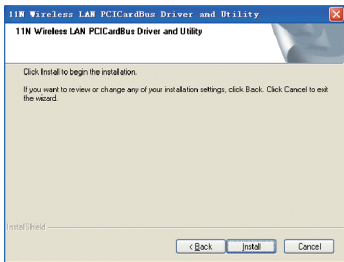
- Select language and then click Next



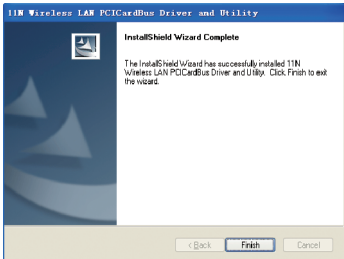
► Click Next



► Click Install



- Click Finish to finish the driver installation



4.2 Hardware installation of the Wireless PCI-E Adapter

4.2.1 Install the Wireless 11N PCI-E adapter into your computer

- Make sure to turn off your computer and unplug the power cord. Remove the back cover of the computer.
- Install the wireless 11N PCI-E Adapter carefully and firmly seat it into an available PCI-E slot (to avoid damage caused by static electricity, make sure to properly ground yourself by first touching a metal part of your computer to discharge any static electricity before working with the wireless 11N PCI-E Adapter).
- Secure the wireless 11N PCI-E Adapter back panel shield with a screw.
- Replace the computer's cover.
- Place the computer back in its normal position.
- Attach the wireless 11N PCI-E Adapter's antenna to the socket on the back panel shield.

4.2.2 Restart your computer

Turn on the computer, the Found New Hardware Wizard (windows XP) screen will appear:

- ▶ Select Install the software automatically (Recommended) and then click Next




- ▶ Click Finish to finish the hardware installation

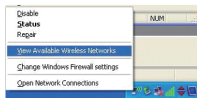


The installation is completed.

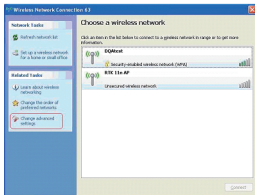
5 Connecting to a wireless network

5.1 Connecting with Microsoft Zero Configuration tool (Win XP)

After specifying the Microsoft Zero Configuration tool to configure your wireless network, right click on the  icon on system tray. Select "View Available Wireless Networks" to specify your wireless network.



The tool shows the available wireless networks. Select your demanding network to connect with. To connect to a wireless network, please click **Change advanced settings** to be compatible with your wireless network settings.



5.2 Connecting with Window 7

You can easily access to wireless with Win7.

First, move your mouse to lower right hand corner as below and click on the icon where arrow pointing to.



Click Refresh to get an update of your Wireless Network Connection. This should help you search the SSID of the network you want to connect to.



Select your desired SSID, then Click "Connect".



You will be prompted to ask you entering the network security key. Once entered, please click OK to complete.



You should see below in a very short period and find out whether you are connected or now.



6 FAQ

This chapter provides solutions to problems that may occur during the installation and operation of the Wireless USB Adapter.

Read the descriptions below to solve your problems.

1. I cannot communicate with the other computers linked via Ethernet in the Infrastructure configuration.

Make sure that the PC to which the Adapter is associated is powered on.

Make sure that your Adapter is configured on the same channel and with the same security options as with the other computers in the Infrastructure configuration.

2. What should I do when the computer with the Adapter installed is unable to connect to the wireless network and/or the Internet?

Check that the LED indicators for the broadband modem are indicating normal activity. If not, there may be a problem with the broadband connection.

Check that the LED indicators on the wireless router are functioning properly. If not, check that the AC power and Ethernet cables are firmly connected.

Check that the IP address, subnet mask, gateway, and DNS settings are correctly entered for the network.

In Infrastructure mode, make sure the same Service Set Identifier (SSID) is specified on the settings for the wireless clients and access points.

In Ad-Hoc mode, both wireless clients will need to have the same SSID. Please note that it might be necessary to set up one client to establish a BSS (Basic Service Set) and wait briefly before setting up other clients.

This prevents several clients from trying to establish a BSS at the same time, which can result in multiple singular BSSs being established, rather than a single BSS with multiple clients associated to it.

Check that the Network Connection for the wireless client is configured properly.

If Security is enabled, make sure that the correct encryption keys are entered on both the Adapter and the access point.

Thank you for purchasing a quality Rosewill Product.
Please register your product at: www.rosewill.com for complete warranty information and future support for your product.

Free Manuals Download Website

<http://myh66.com>

<http://usermanuals.us>

<http://www.somanuals.com>

<http://www.4manuals.cc>

<http://www.manual-lib.com>

<http://www.404manual.com>

<http://www.luxmanual.com>

<http://aubethermostatmanual.com>

Golf course search by state

<http://golfingnear.com>

Email search by domain

<http://emailbydomain.com>

Auto manuals search

<http://auto.somanuals.com>

TV manuals search

<http://tv.somanuals.com>