

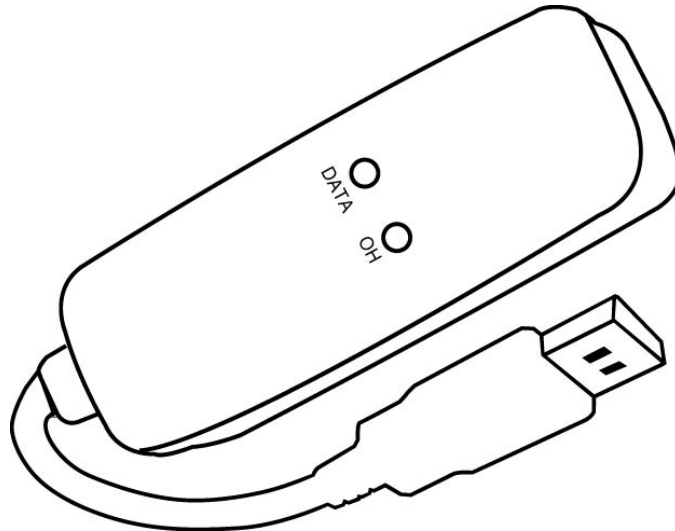


Modem RNX-56USB
Quick Installation Guide



Installation for 98SE, ME, 2000, XP, Vista 32/64bit

1. Plug in your 56K USB Modem to your USB port.
 - 'OH' LED: On while dialing and connected; off after disconnected.
 - 'DATA' LED: Blinking during data sending/receiving.



2. Found New Hardware Wizard window pops up, click **Cancel**.



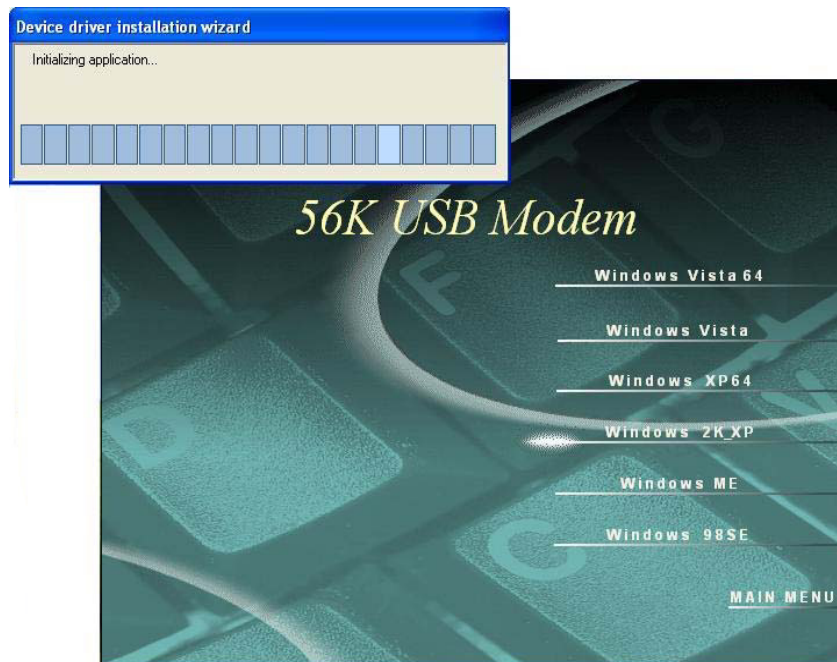
- The installation driver CD in your package will automatically activate the auto-run installation program after you insert it into your CD-ROM drive. Then click **Driver Installation**.



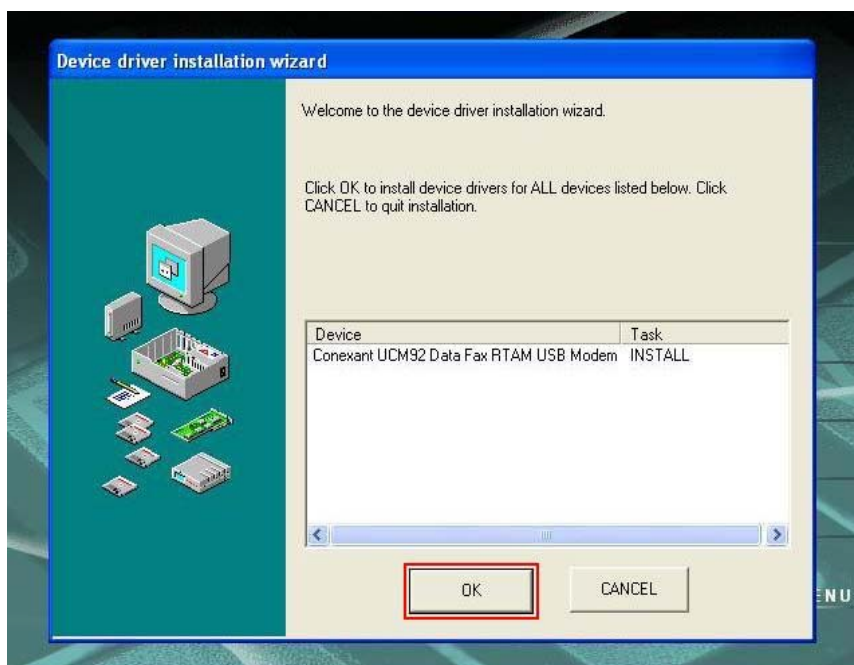
- Select drive for your OS, for example: **Windows 2K_XP**.



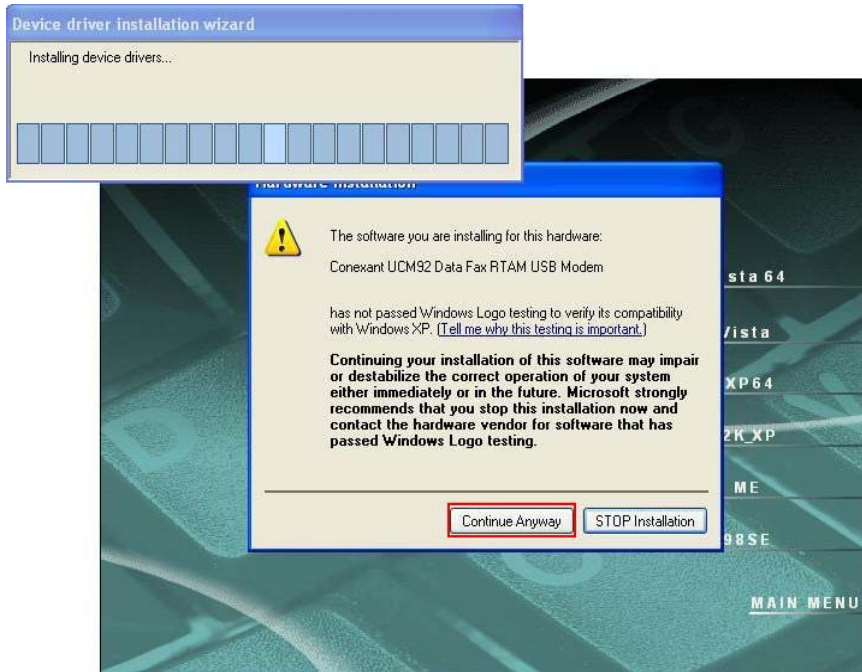
5. The **Device drive installation wizard** shows that the device is being installed.



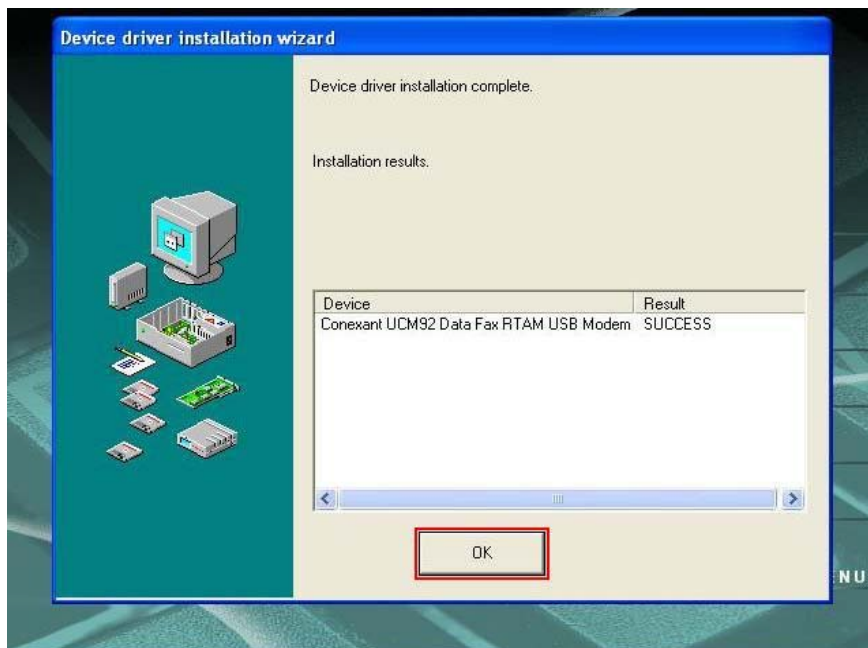
6. Click **OK**.



- 7. Click **Continue Anyway**.

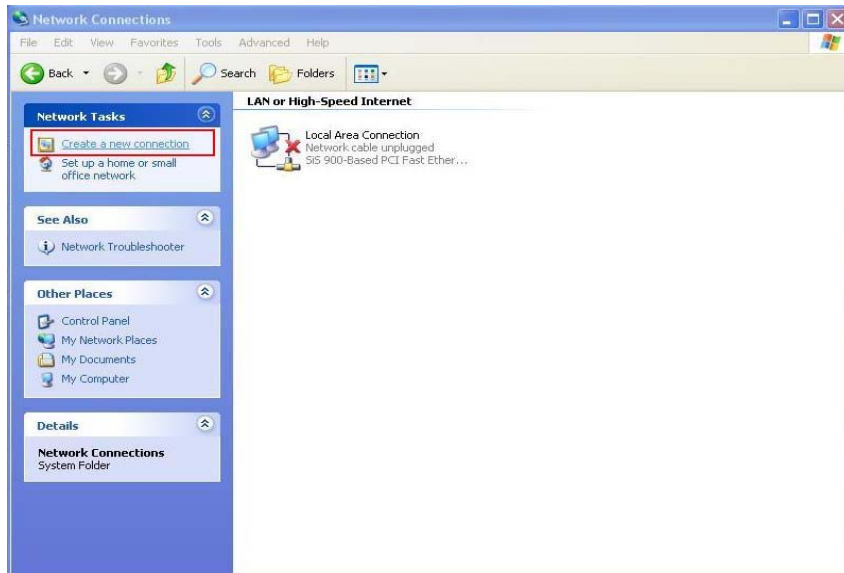


- 8. Click **OK**.

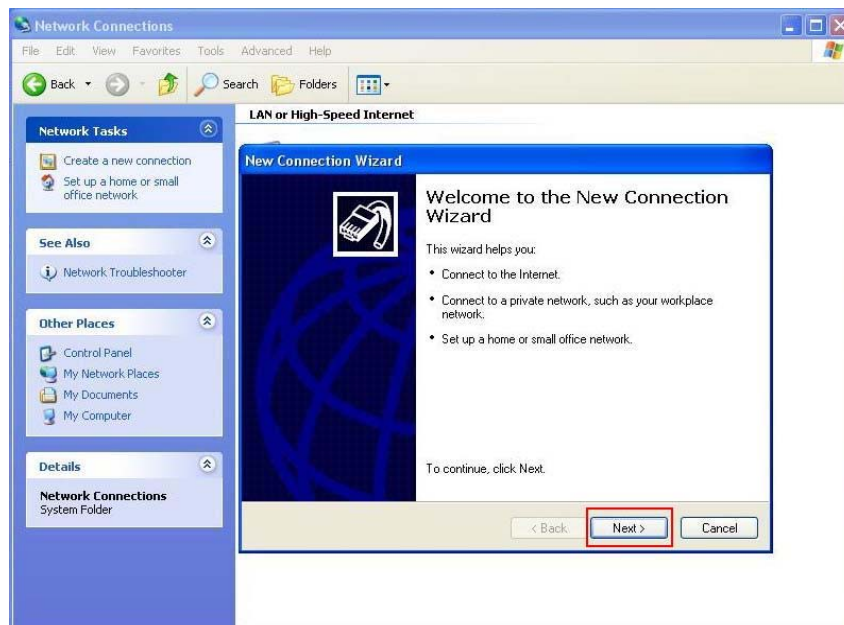


Manual Dial-up Connection Settings (XP for example)

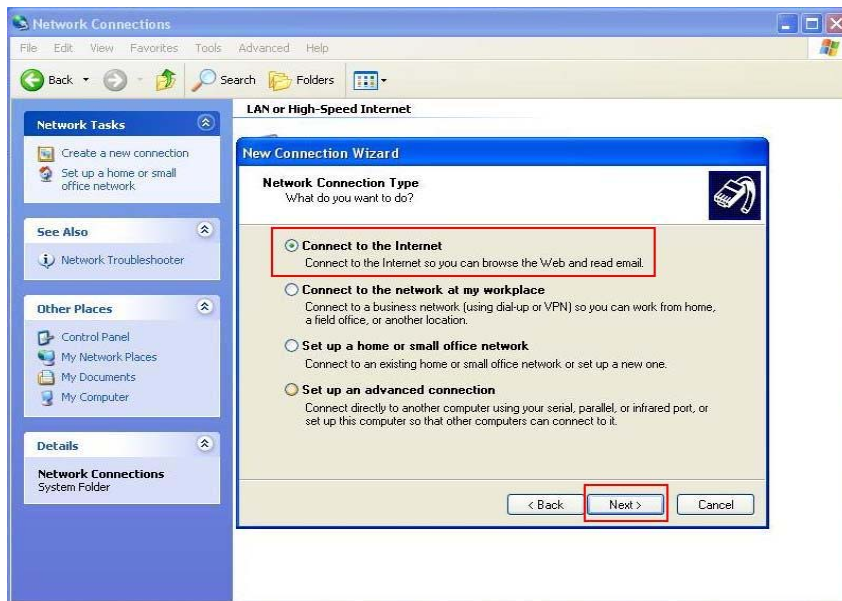
1. On **Control Panel/Network Connections**, click **Create a new connection**.



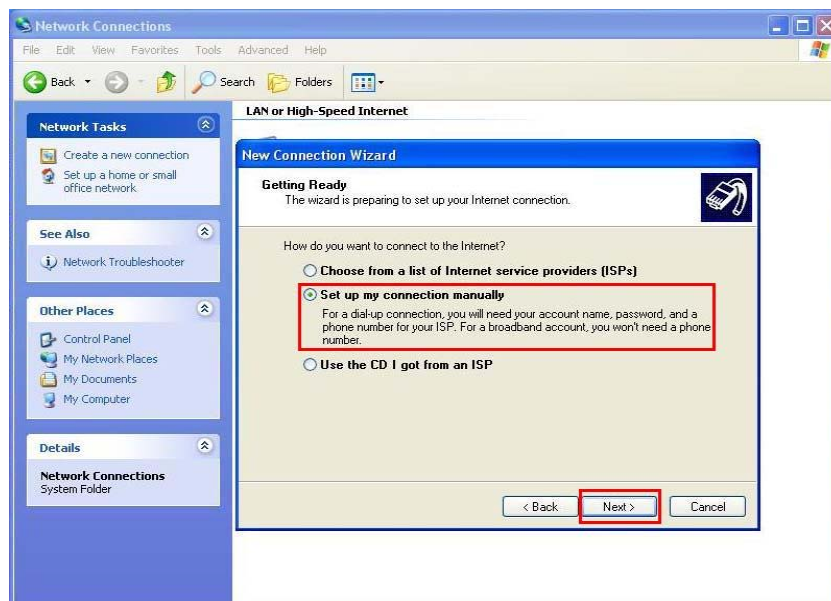
2. Click **Next**.



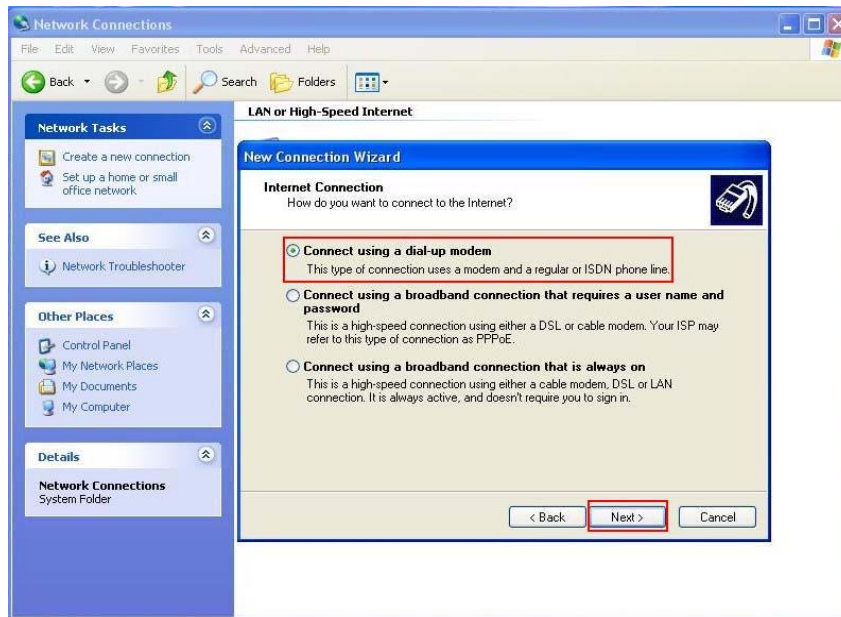
3. Select **Connect to the Internet** and click **Next**.



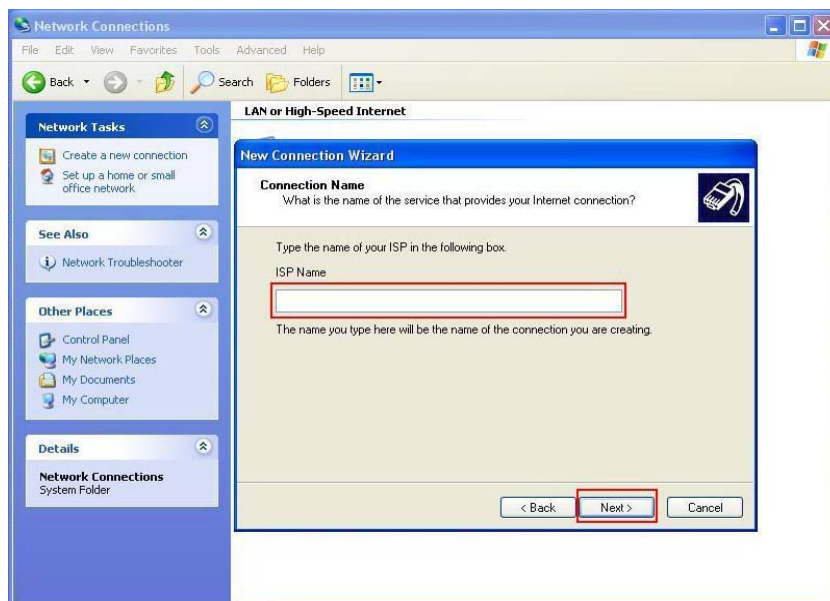
4. Select **Set up my connection manually** and click **Next**.



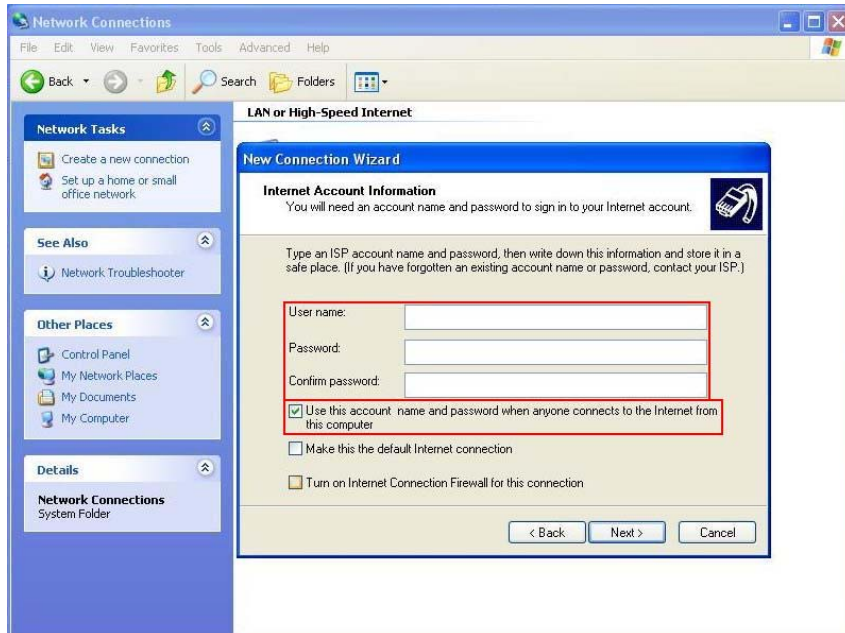
5. Select **Connect using a dial-up modem** and click **Next**.



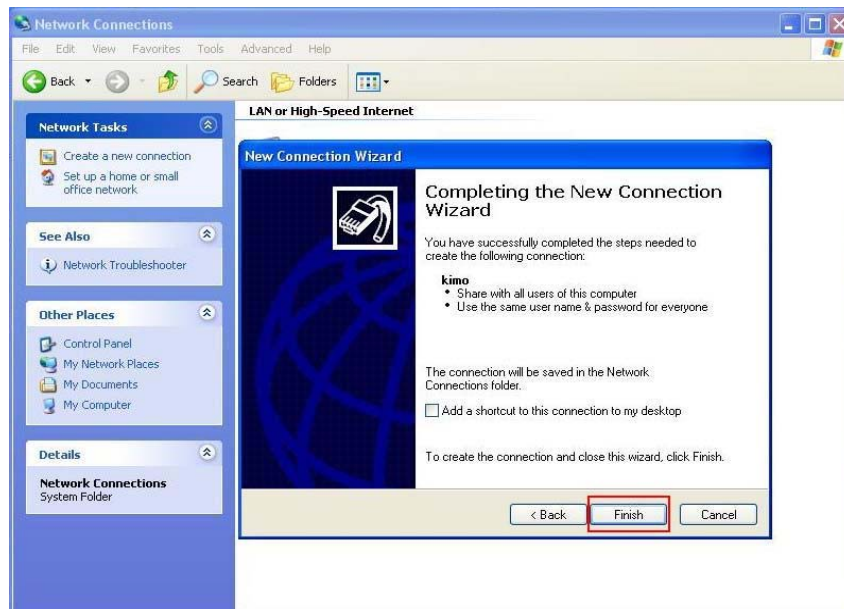
6. Input **ISP Name** and click **Next**.



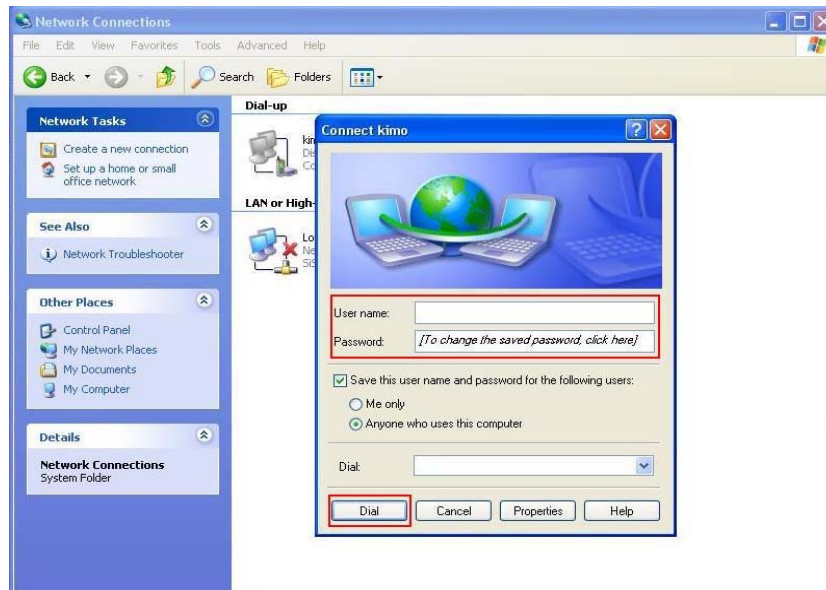
7. Input **User name**, **Password** and **Confirm password**, select **Use this account name and password when anyone connects to the Internet from this computer**.



8. Click **Finish** to complete manual connection.

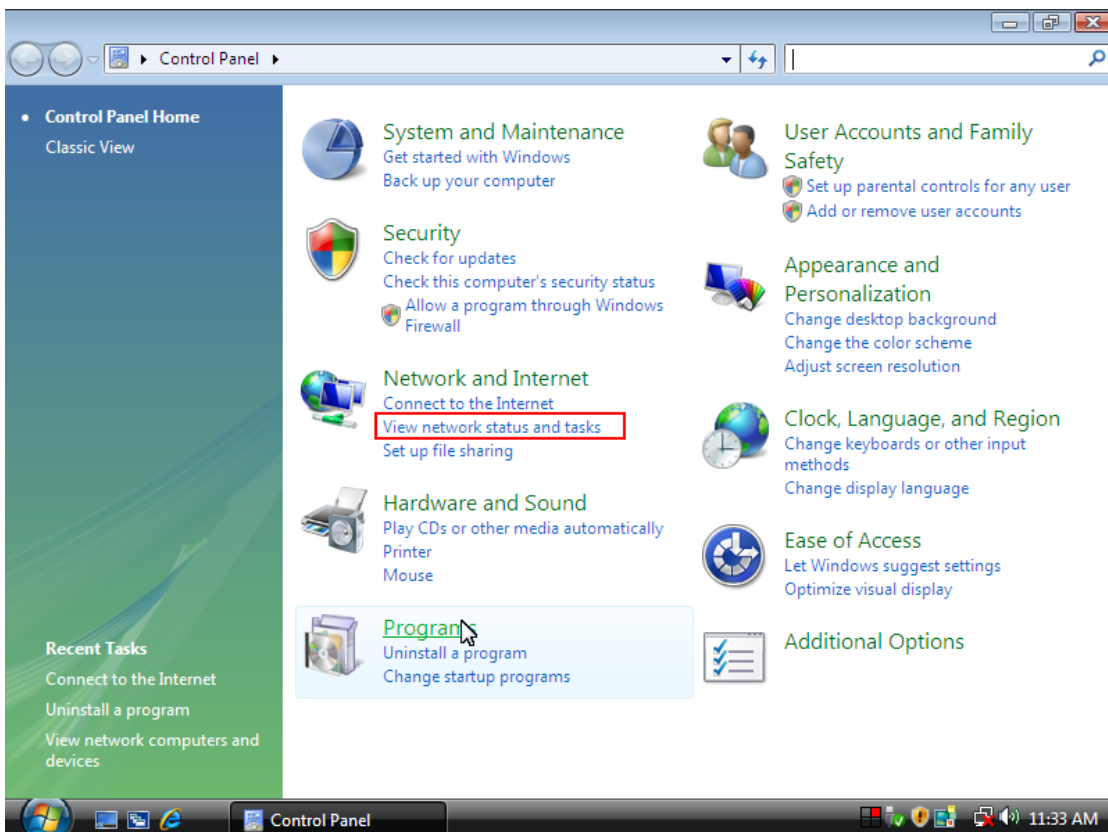


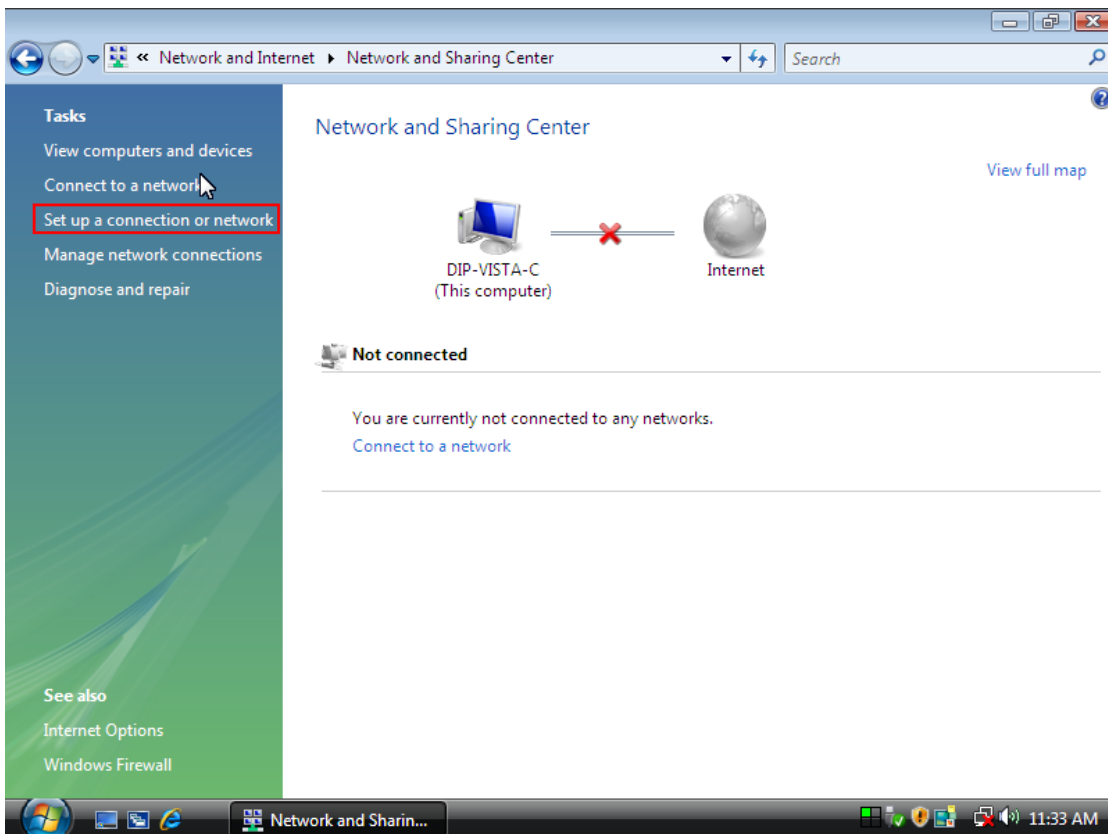
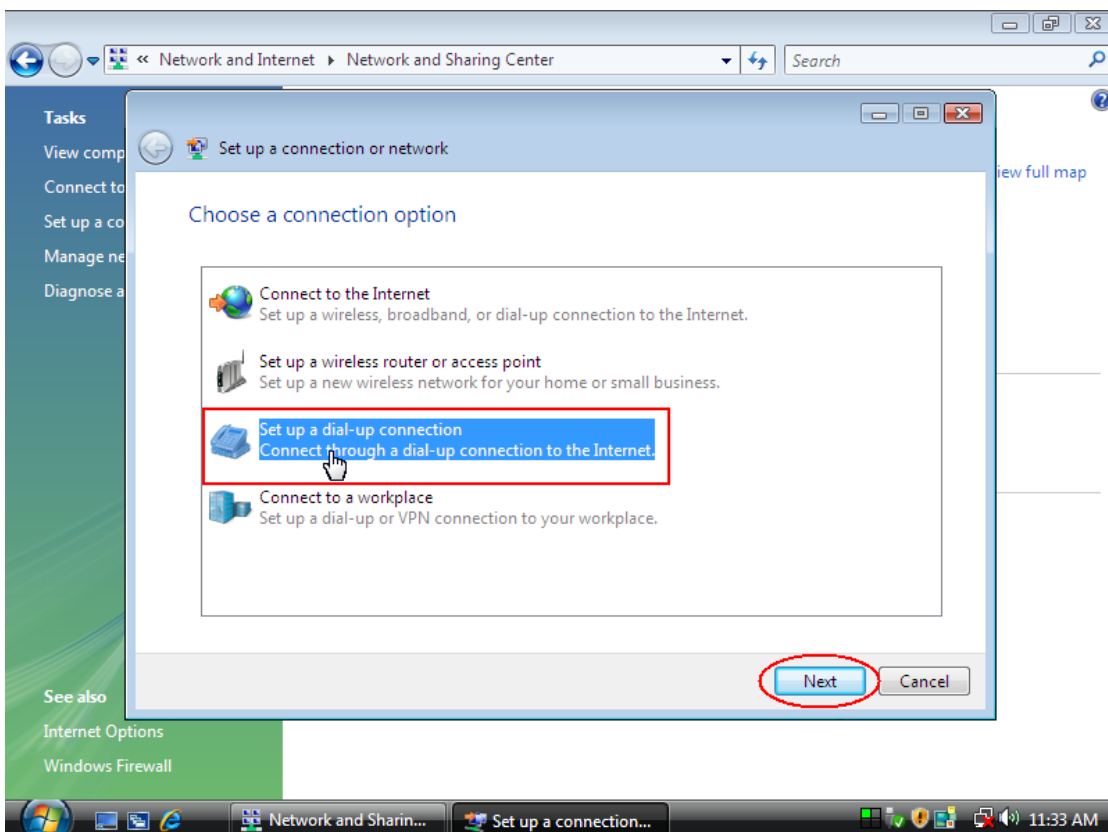
9. Click **Dial** to connect to Internet.



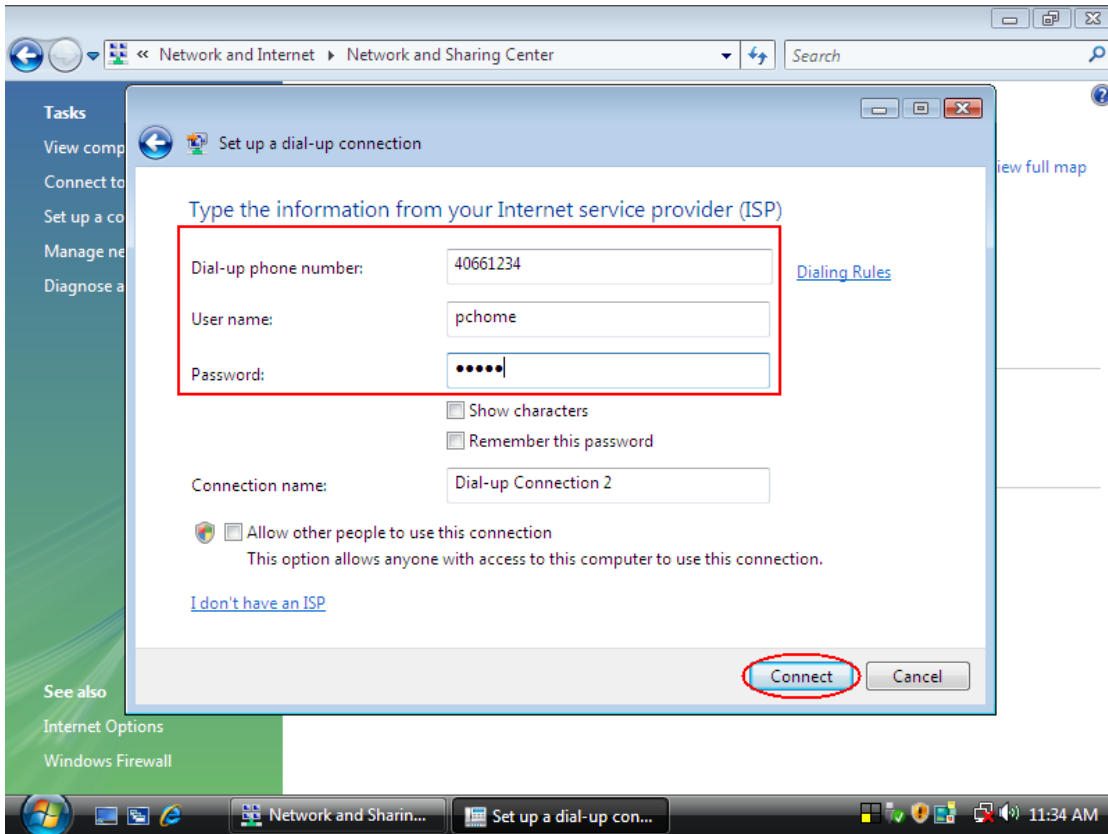
Manual Dial-up Connection Settings (For Vista)

1. open control Panel and click **view network status and tasks**

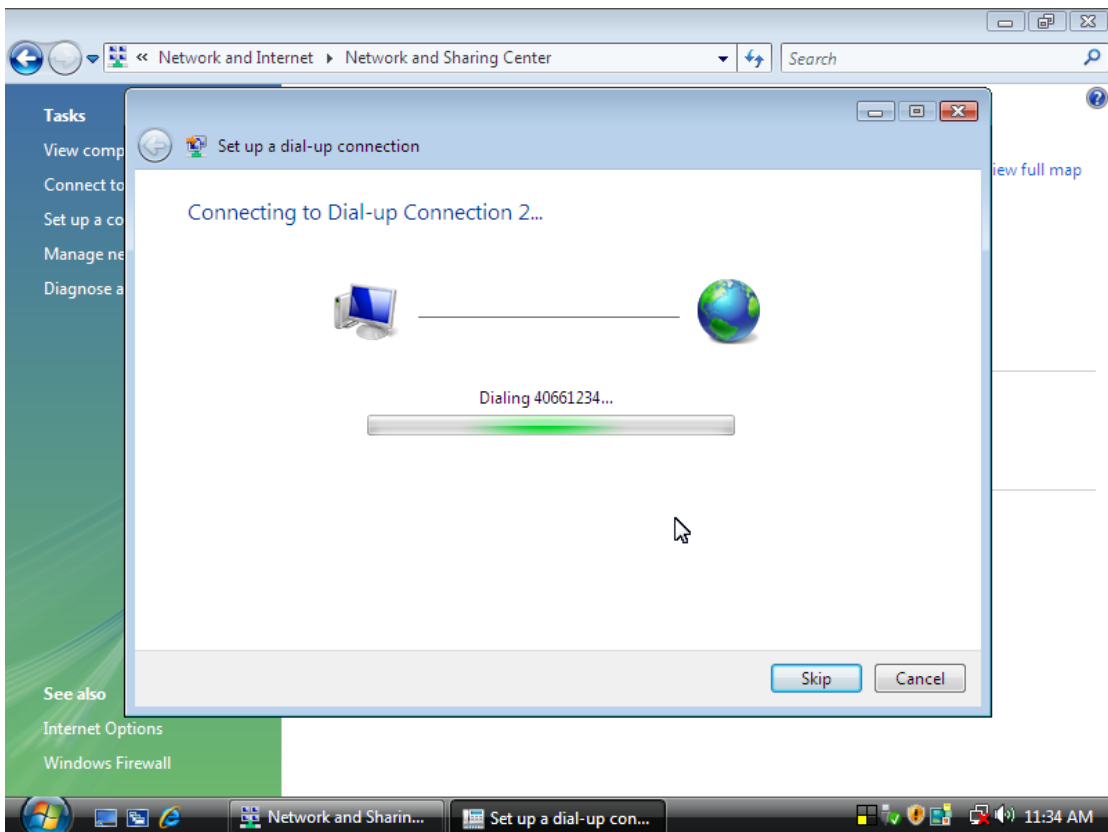


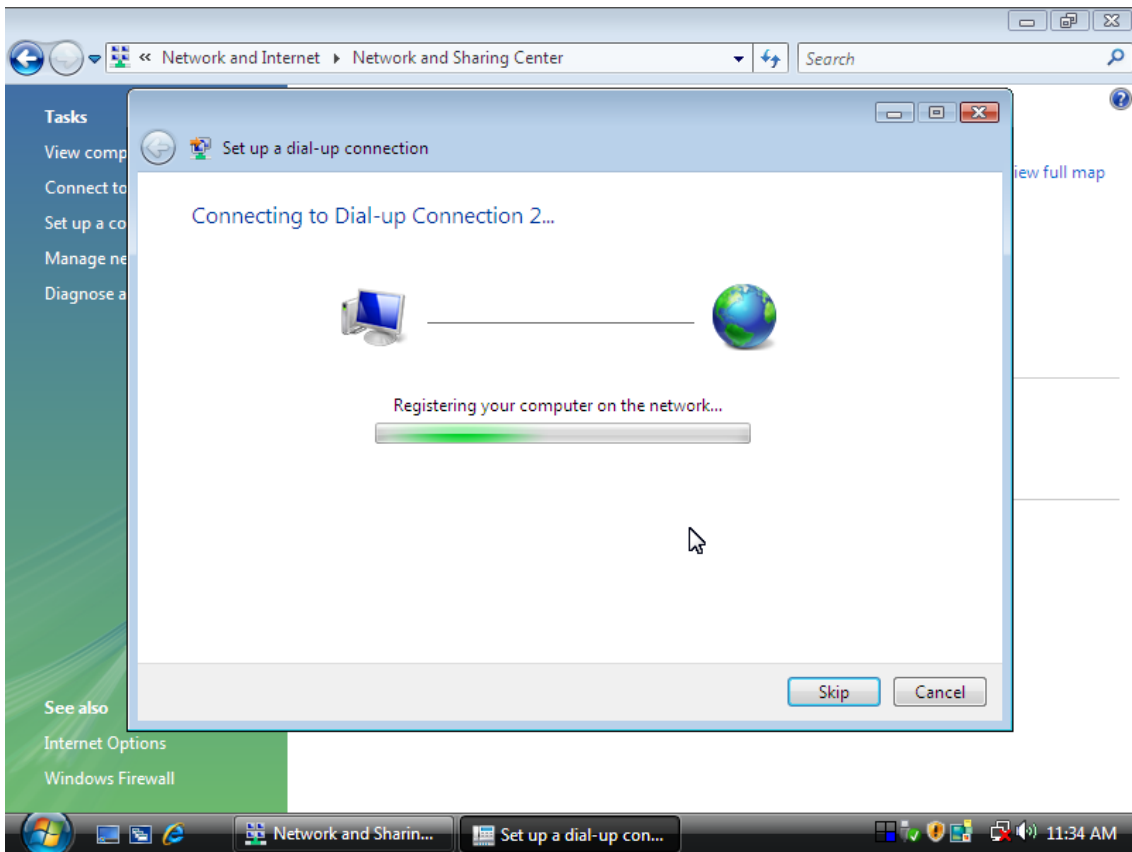
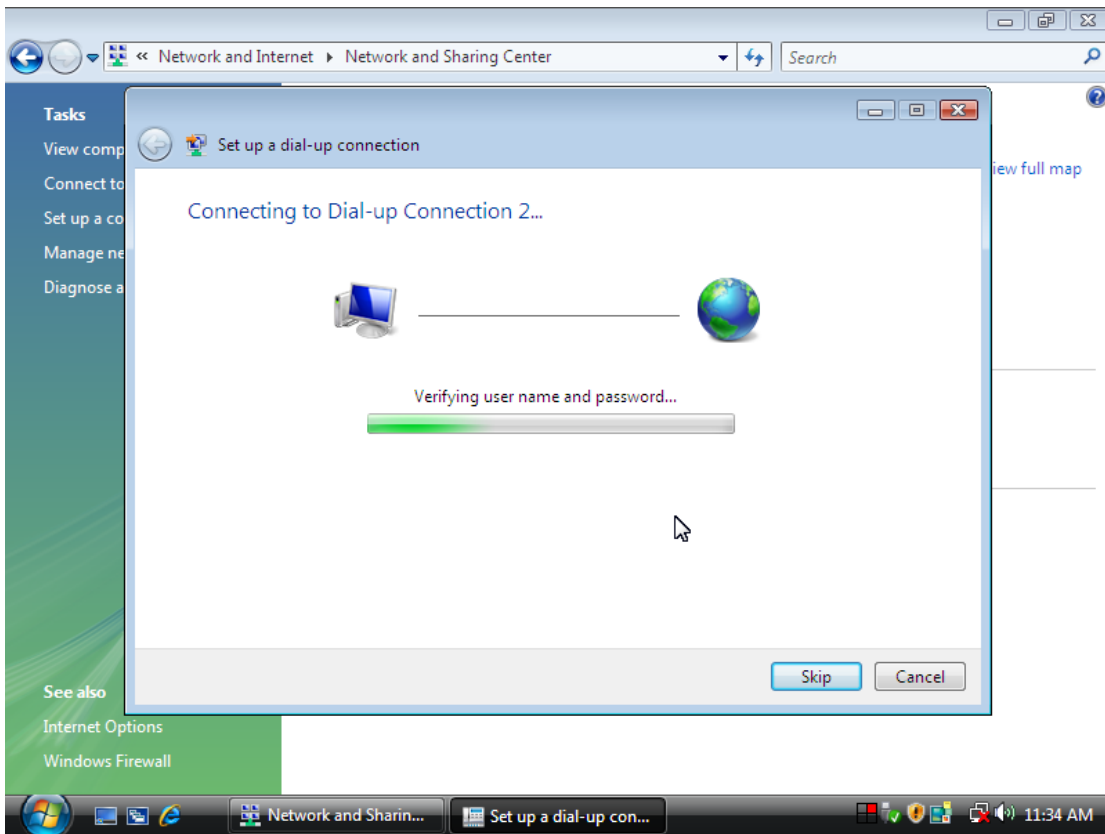
2. click **Set up a connection or network**3. Select **Set up a dial-up connection** then click **Next**

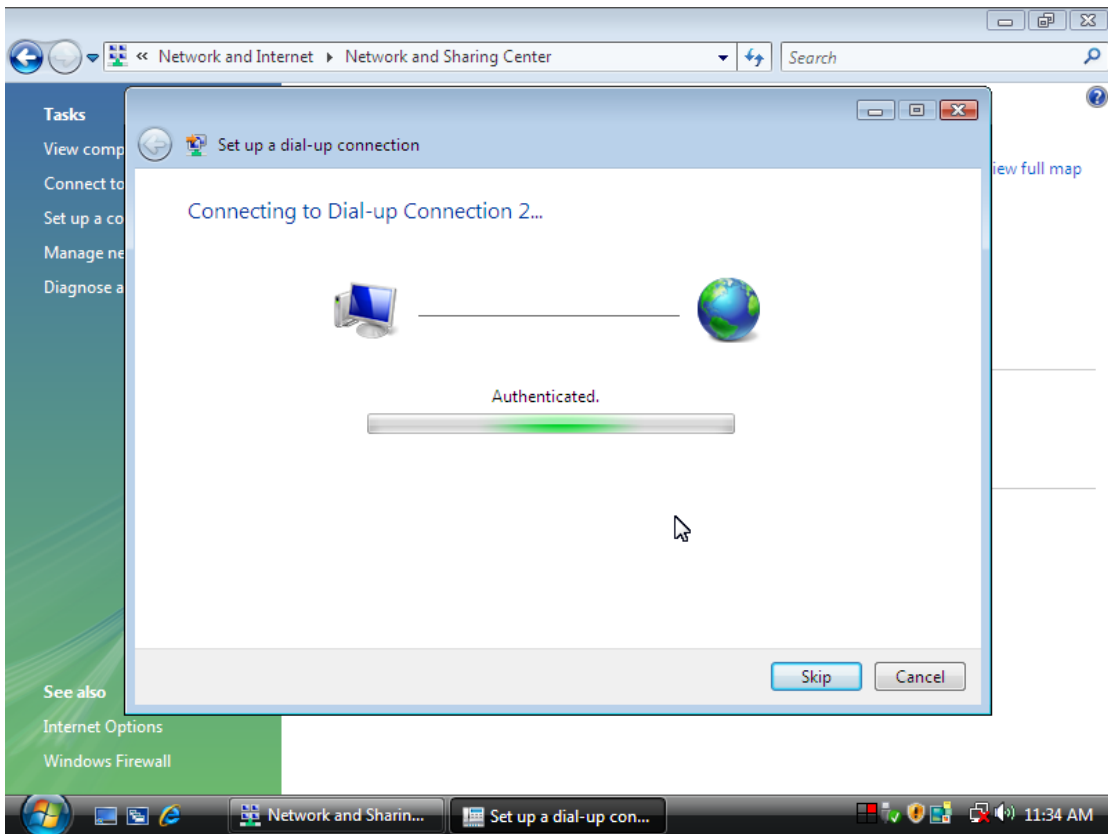
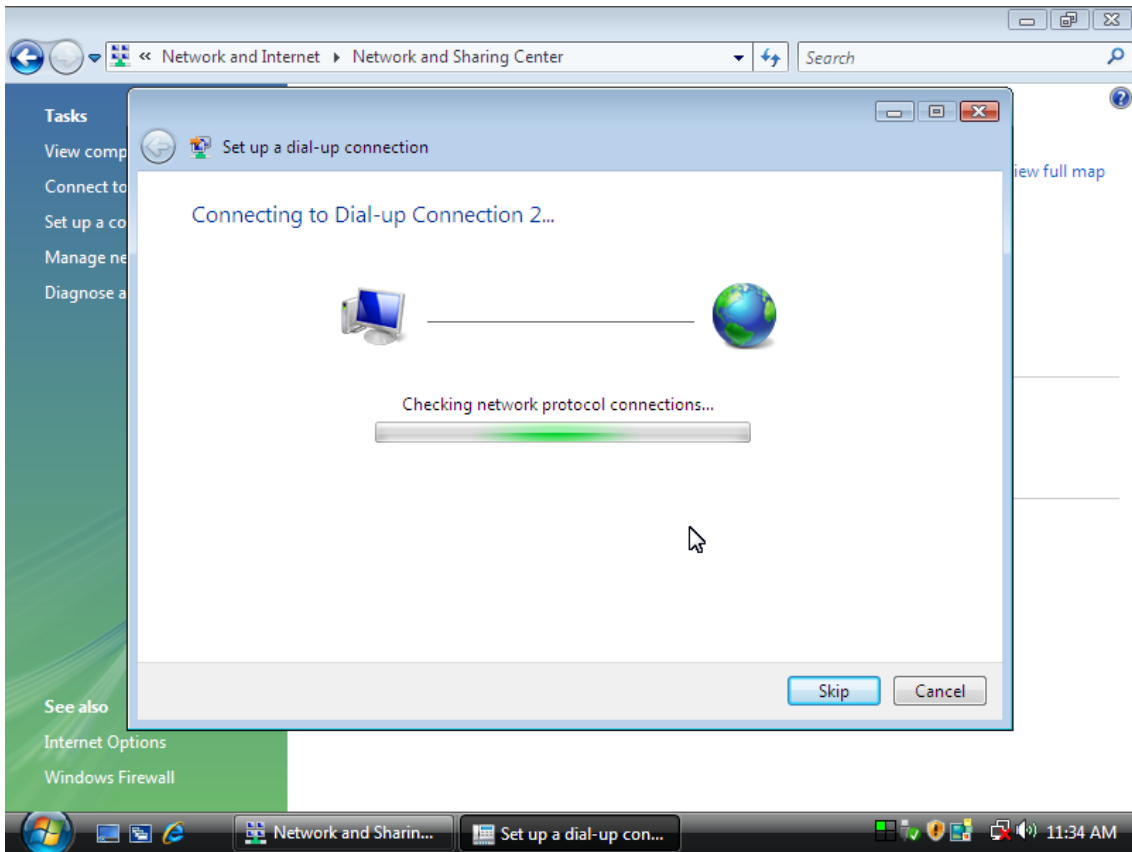
4. Input **Dial-up phone number**, **User name**, **Password** then click **Connect**



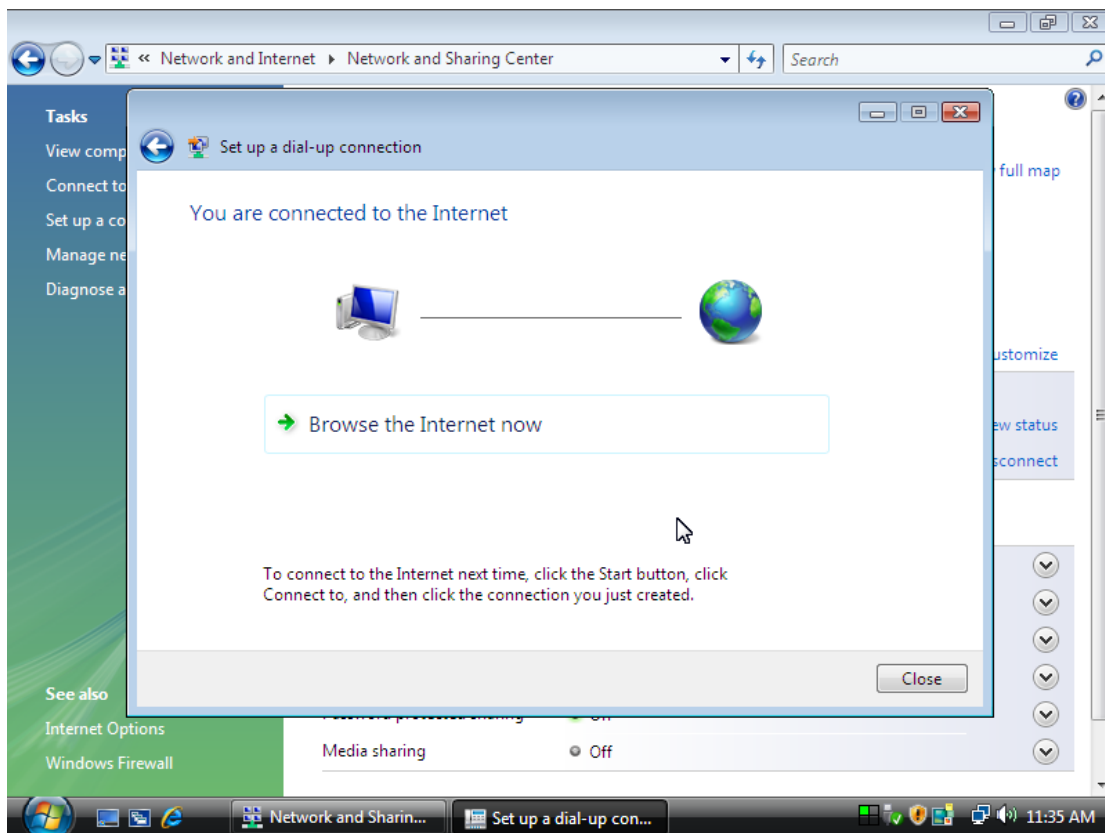
5. Waiting for Dial-up Connection. System will complete the other steps automatically.







6. Once this screen pops out, the internet is connected successfully.



Thank you for purchasing a quality Rosewill Product.

Please register your product at : www.rosewill.com for complete warranty information and future support for your product.

Free Manuals Download Website

<http://myh66.com>

<http://usermanuals.us>

<http://www.somanuals.com>

<http://www.4manuals.cc>

<http://www.manual-lib.com>

<http://www.404manual.com>

<http://www.luxmanual.com>

<http://aubethermostatmanual.com>

Golf course search by state

<http://golfingnear.com>

Email search by domain

<http://emailbydomain.com>

Auto manuals search

<http://auto.somanuals.com>

TV manuals search

<http://tv.somanuals.com>