



Wireless High Gain USB Adapter RNX-N150HG

User Manual



1910020408

FCC STATEMENT

This equipment has been tested and found to comply with the limits for a Class B digital device, pursuant to part 15 of the FCC Rules. These limits are designed to provide reasonable protection against harmful interference in a residential installation. This equipment generates, uses and can radiate radio frequency energy and, if not installed and used in accordance with the instructions, may cause harmful interference to radio communications. However, there is no guarantee that interference will not occur in a particular installation. If this equipment does cause harmful interference to radio or television reception, which can be determined by turning the equipment off and on, the user is encouraged to try to correct the interference by one or more of the following measures:

- Reorient or relocate the receiving antenna.
- Increase the separation between the equipment and receiver.
- Connect the equipment into an outlet on a circuit different from that to which the receiver is connected.
- Consult the dealer or an experienced radio/ TV technician for help.

This device complies with part 15 of the FCC Rules. Operation is subject to the following two conditions:

- 1). This device may not cause harmful interference.
- 2). This device must accept any interference received, including interference that may cause undesired operation.

Any changes or modifications not expressly approved by the party responsible for compliance could void the user's authority to operate the equipment.

FCC RF Radiation Exposure Statement

This equipment complies with FCC RF radiation exposure limits set forth for an uncontrolled environment. This device and its antenna must not be co-located or operating in conjunction with any other antenna or transmitter.

"To comply with FCC RF exposure compliance requirements, this grant is applicable to only Mobile Configurations. The antennas used for this transmitter must be installed to provide a separation distance of at least 20 cm from all persons and must not be co-located or operating in conjunction with any other antenna or transmitter."

CE Mark Warning

This is a class B product. In a domestic environment, this product may cause radio interference, in which case the user may be required to take adequate measures.

National Restrictions

2400.0-2483.5 MHz

Country	Restriction	Reason/remark
Bulgaria		General authorization required for outdoor use and public service
France	Outdoor use limited to 10 mW EIRP. within the band 2454-2483.5 MHz	Military Radiolocation use. Refarming of the 2.4 GHz band has been ongoing in recent years to allow current relaxed regulation. Full implementation planned 2012
Italy		If used outside of own premises, general authorization is required
Luxembourg		General authorization required for network and service supply(not for spectrum)
Norway	Implemented	This subsection does not apply for the geographical area within a radius of 20 km from the centre of Ny-Ålesund
Russian Federation		Only for indoor applications

Note: Please don't use the product outdoors in France.

Table of Content

Package Contents	1
Chapter 1 Overview	2
1.1 Overview of the product	2
1.2 Features.....	2
1.3 LED Status	2
Chapter 2 Installation Guide	3
2.1 Hardware Installation	3
2.2 Software Installation.....	3
2.2.1 For Windows XP	3
2.2.2 For Windows Vista.....	8
2.2.3 For Windows 7.....	10
Chapter 3 Configuration Guide	13
3.1 For Windows XP	13
3.1.1 Current Status	14
3.1.2 Profile Management	15
3.1.3 Diagnostics	23
3.2 For Windows Vista	25
3.3 For Windows 7	27
Chapter 4 WPS Configuration	30
4.1 PBC (Push Button Configuration) method	30
4.2 PIN method.....	33
4.2.1 Enter a PIN into your AP device	33
4.2.2 Enter the PIN from your AP device.....	34
Appendix A: Specifications	36
Appendix B: Glossary	37
Appendix C: FAQ	39

Package Contents

The following contents should be found in your box:

- One RNX-N150HG Wireless High Gain USB Adapter
- Quick Installation Guide
- One USB cable
- One Resource CD for RNX-N150HG, including:
 - Wireless Lite-N Client Utility (**UTILITY**) and Drivers
 - User Guide
 - Other Helpful Information

Note:

Make sure that the package contains the above items. If any of the listed items are damaged or missing, please contact with your distributor.

Conventions:

The 'Adapter' mentioned in this user guide stands for RNX-N150HG Wireless High Gain USB Adapter without any explanations.

Chapter 1 Overview

Thank you for choosing **RNX-N150HG Wireless High Gain USB Adapter**.

1.1 Overview of the product

The adapter is designed to provide a high-speed and unrivaled wireless performance for your notebook and PC. With a faster wireless connection, you can get a better Internet experience, such as downloading, gaming, video streaming and so on.

The RNX-N150HG's auto-sensing capability allows high packet transfer rate of up to 150Mbps for maximum throughput. It has good capability on anti-jamming; it can also interoperate with other wireless (802.11b/g) products. The adapter supports WEP, WPA and WPA2 encryption to prevent outside intrusion and protect your personal information from being exposed.

The Quick Setup Wizard guides you step by step through the installation process; the Wireless Lite-N Client Utility helps you create a wireless connection immediately.

With unmatched wireless performance, reception, and security protection, the RNX-N150HG is the best choice for easily adding or upgrading wireless connectivity.

1.2 Features

- IEEE802.11n, IEEE802.11g, IEEE802.11b standards
- Supports WPA/WPA2 data security, IEEE802.1x authentication, TKIP/AES encryption, WEP encryption
- Make use of IEEE 802.11n wireless technology to provide a wireless data rate of up to 150Mbps
- supports automatically adjust to lower speeds due to distance or other operating limitations
- Provides USB interface
- Supports Ad-Hoc and Infrastructure modes
- Good capability on anti-jamming
- Supports roaming between access points when configured in Infrastructure mode
- Easy to configure and provides monitoring information
- Supports Windows 2000, Windows XP32/64, Windows Vista32/64, Windows 7

1.3 LED Status

Status	Working Status
Off	The driver has not been installed.
Flashing Slowly	The driver has been installed but there is no data being transmitted or received.
Flashing Quickly	There is data being transmitted or received.

Chapter 2 Installation Guide

2.1 Hardware Installation

There are two ways to install the Adapter:

1. Plug the Adapter directly to the USB port on your computer.
2. Connect the Adapter and your computer through the USB cable attached in package.

 **Note:**

The promoted Found New Hardware Wizard screen will pop up when the adapter is installed correctly. Click **Cancel**.

2.2 Software Installation

2.2.1 For Windows XP

The Setup steps for Windows 2000 and XP are similar with each other. This user guide takes Windows XP for example.

1. Insert the Resource CD into your CD-ROM drive. To continue, double-click **My Computer**, and then double-click the **CD/DVD** drive where the installation CD was placed. Open **RNX-N150HG** folder, and double-click **Setup.exe**. Then you will see Figure 2-1.

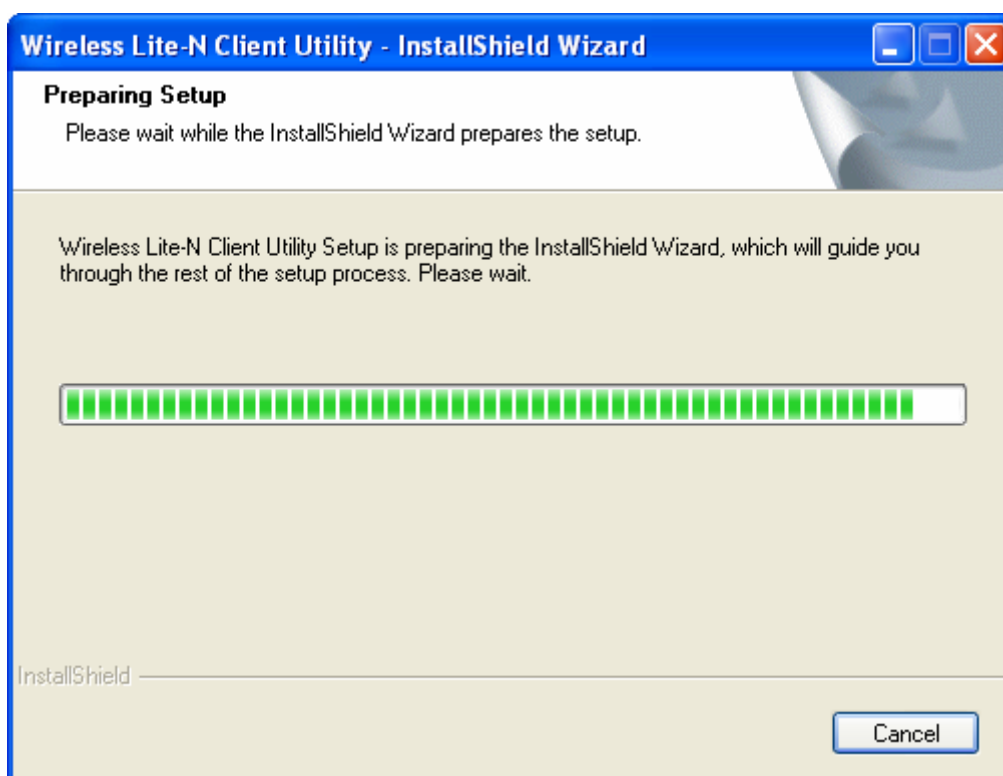


Figure 2-1

2. Soon, Figure 2-2 will display after a moment. Click **Next** to continue.

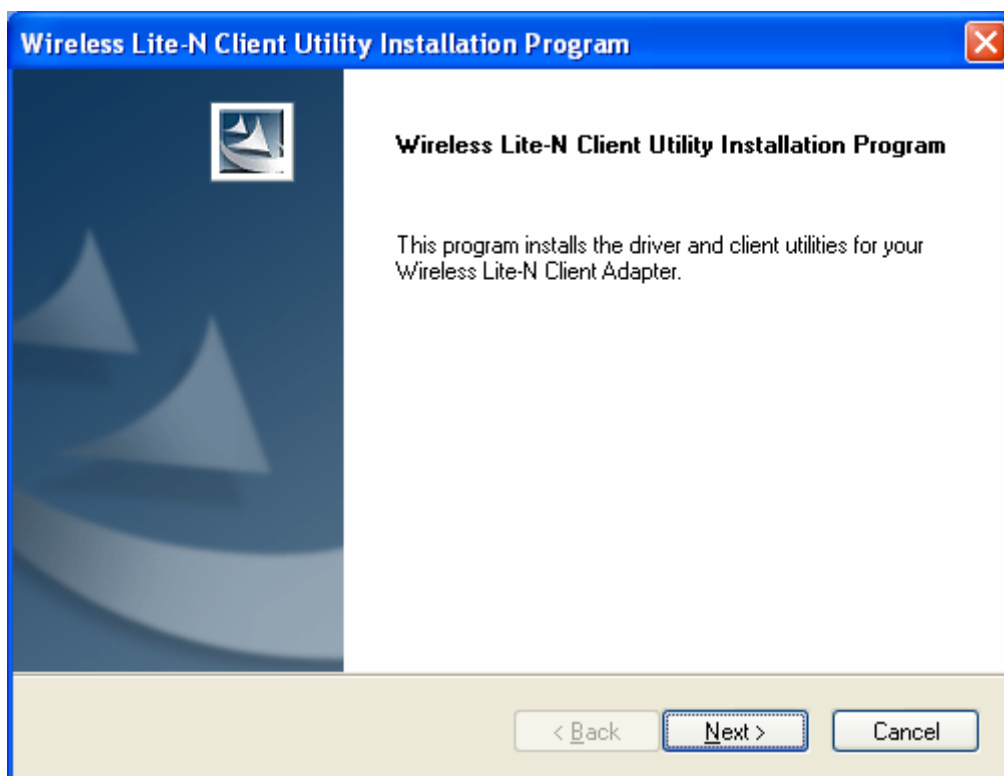


Figure 2-2

3. After that, you should choose a Setup type. It is recommended that you select **Install Client Utilities and Driver**. Select **Install Driver Only** to install driver only. Click **Next** to continue.

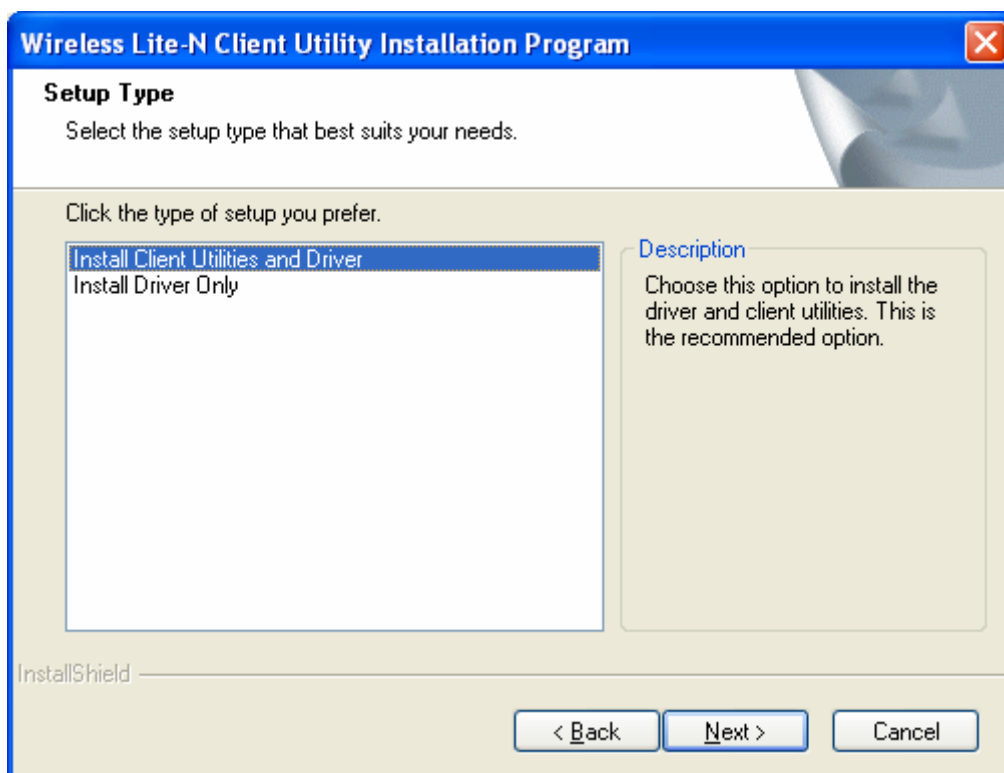


Figure 2-3

4. Click **Browse...** to change the destination location for the software, then click **Next** in

the screen below (shown in XFigure 2-4).

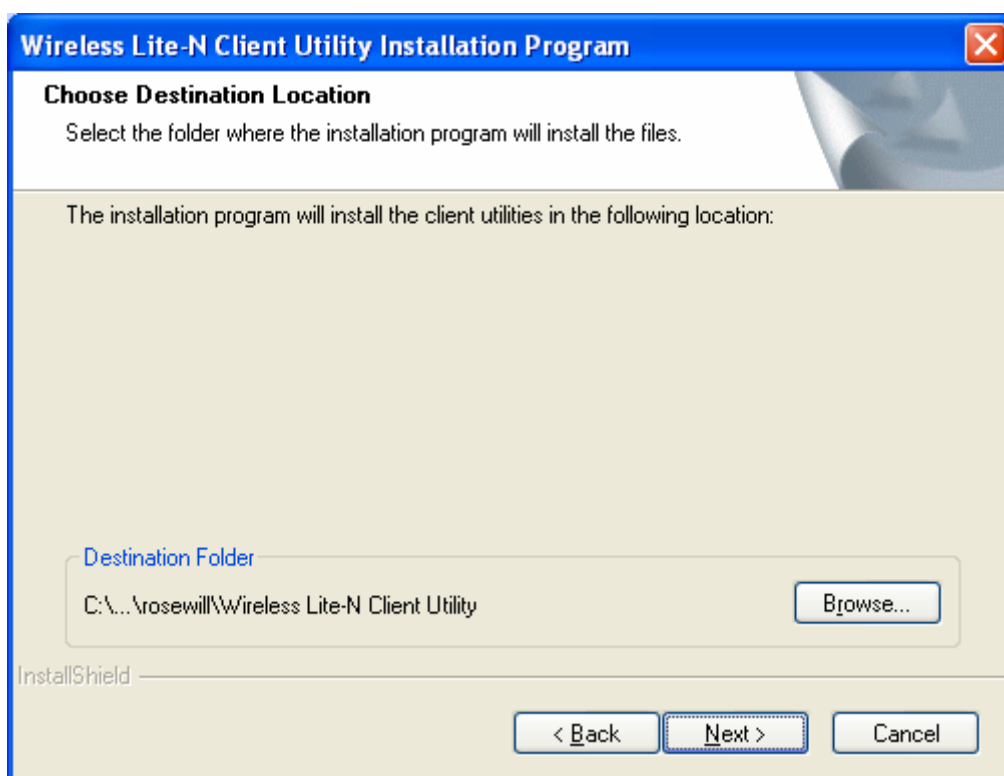


Figure 2-4

5. After that, select the program folder, you should create a new folder name or select one from the **Existing Folders** list. It is recommended that you keep the default setting. Click **Next** to continue the installation.

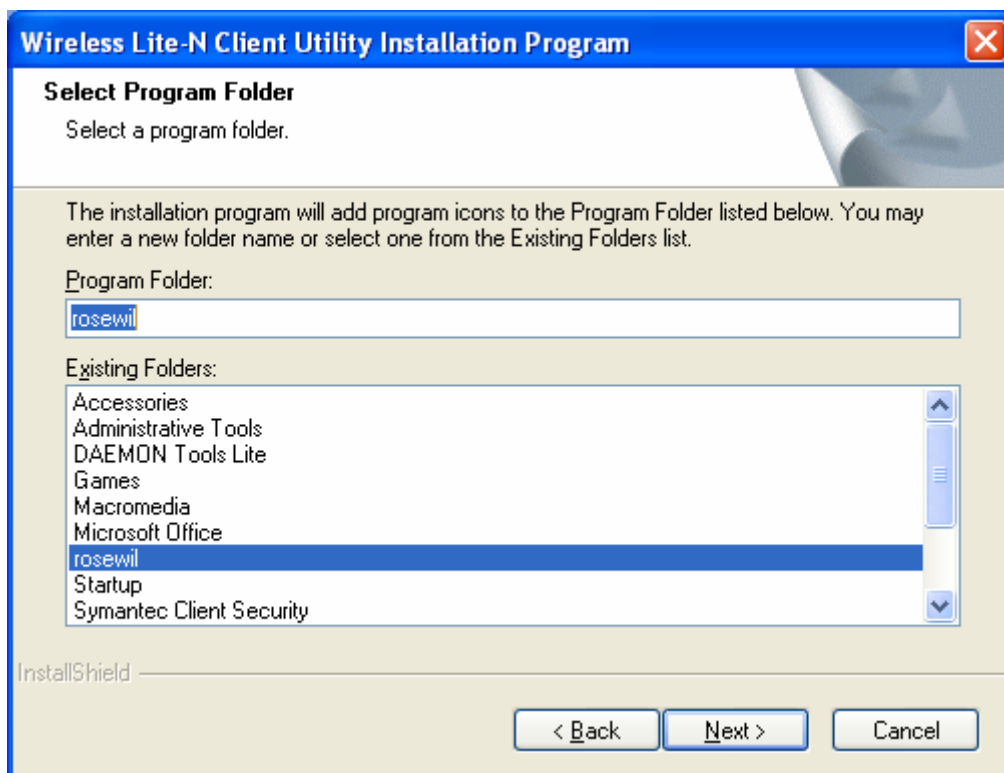


Figure 2-5

- Choose configuration tool, if you are not sure, please leave it default. Then click **Next** to continue.

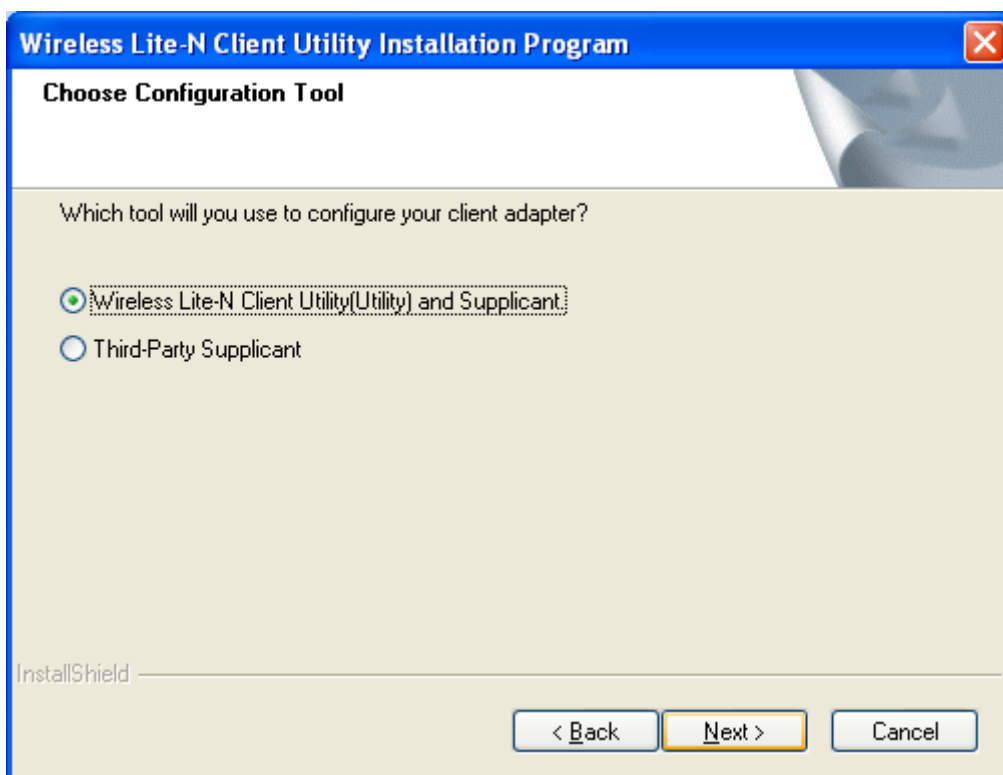


Figure 2-6

- Click **OK** to continue the Installation. Wait a while for the setup as shown in XFigure 2-7.

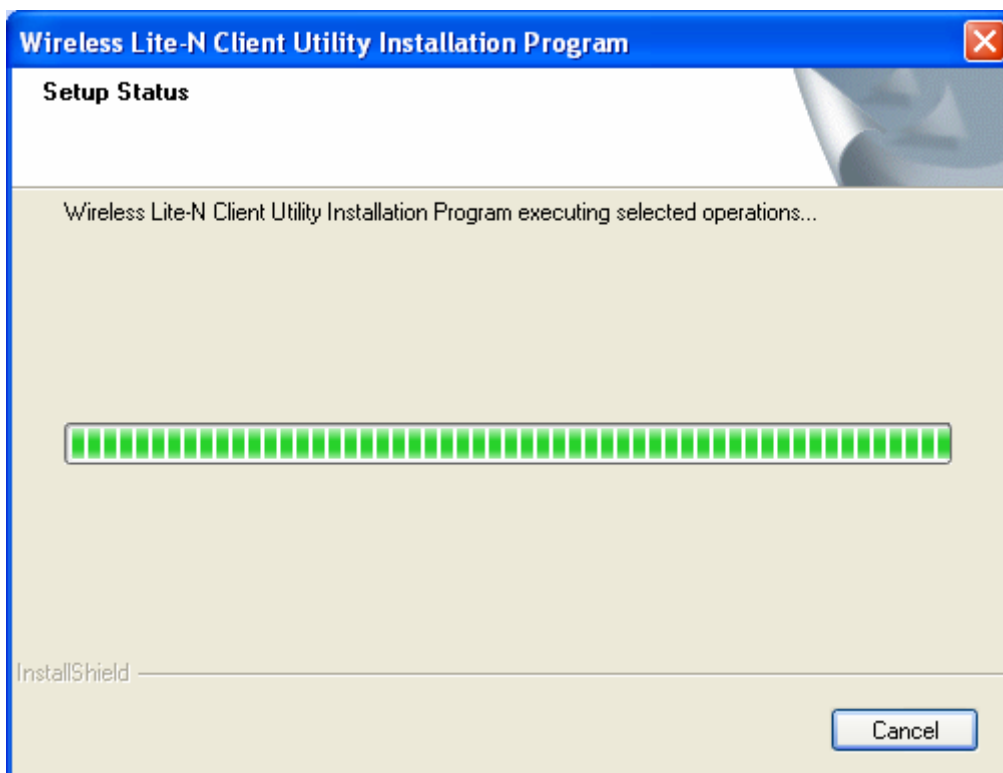


Figure 2-7

Note:

For Windows XP, the Setup Wizard will notify you of how to proceed with the installation during these steps (shown in XFigure 2-8X). Our drivers have been tested thoroughly, and are able to work with the operating system. Click **Continue Anyway** to continue the Installation.



Figure 2-8

- After all the steps above, you will see the screen below, click **Finish** to reboot the system.

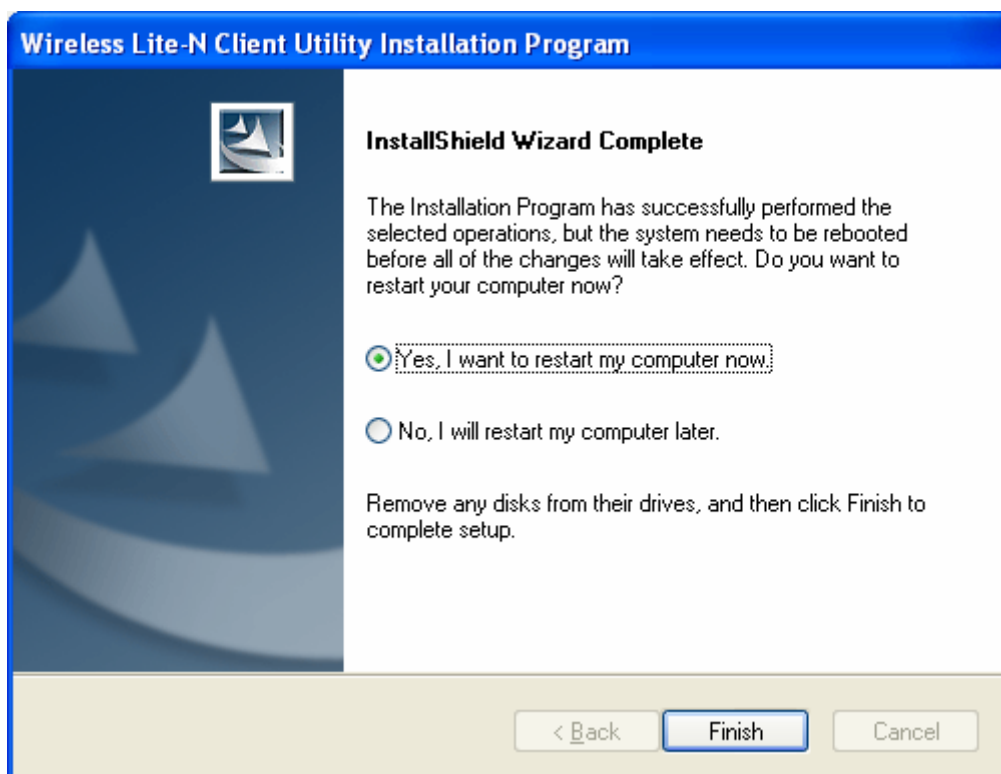


Figure 2-9

2.2.2 For Windows Vista

1. Insert the Resource CD into your CD-ROM drive. To continue, double-click **My Computer**, and then double-click the CD/DVD drive where the installation CD was placed. Open **RNX-N150HG** folder, and double-click **Setup.exe**. Then you will see Figure 2-10.

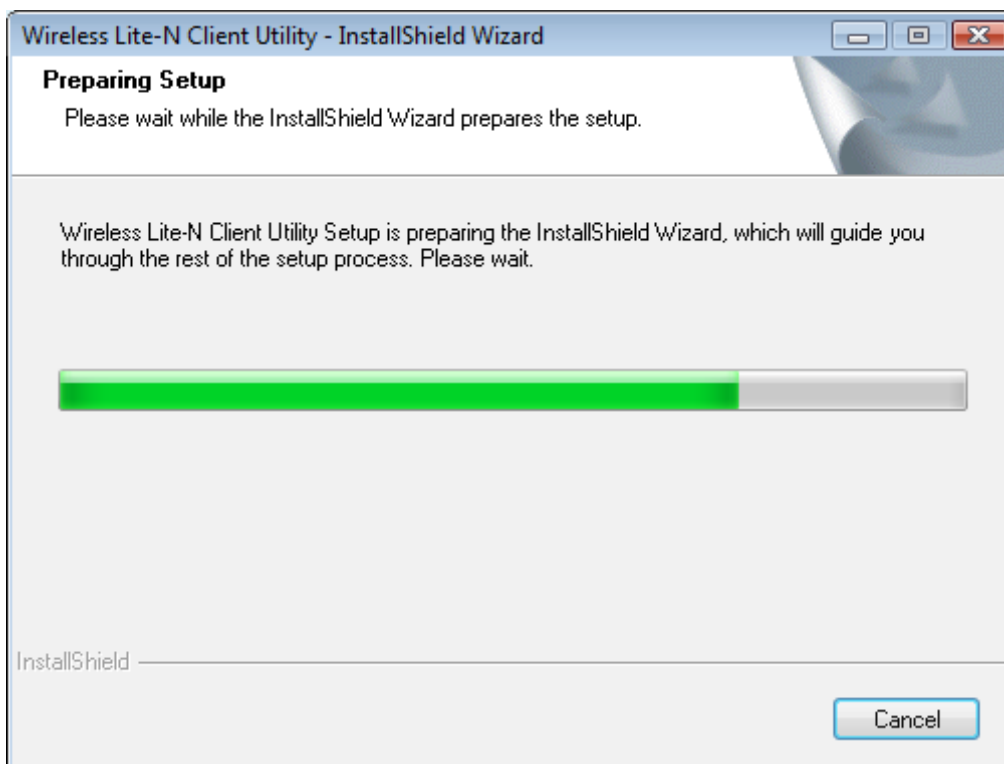


Figure 2-10

2. Soon, Figure 2-11 will display after a moment. Click **Next** to continue.

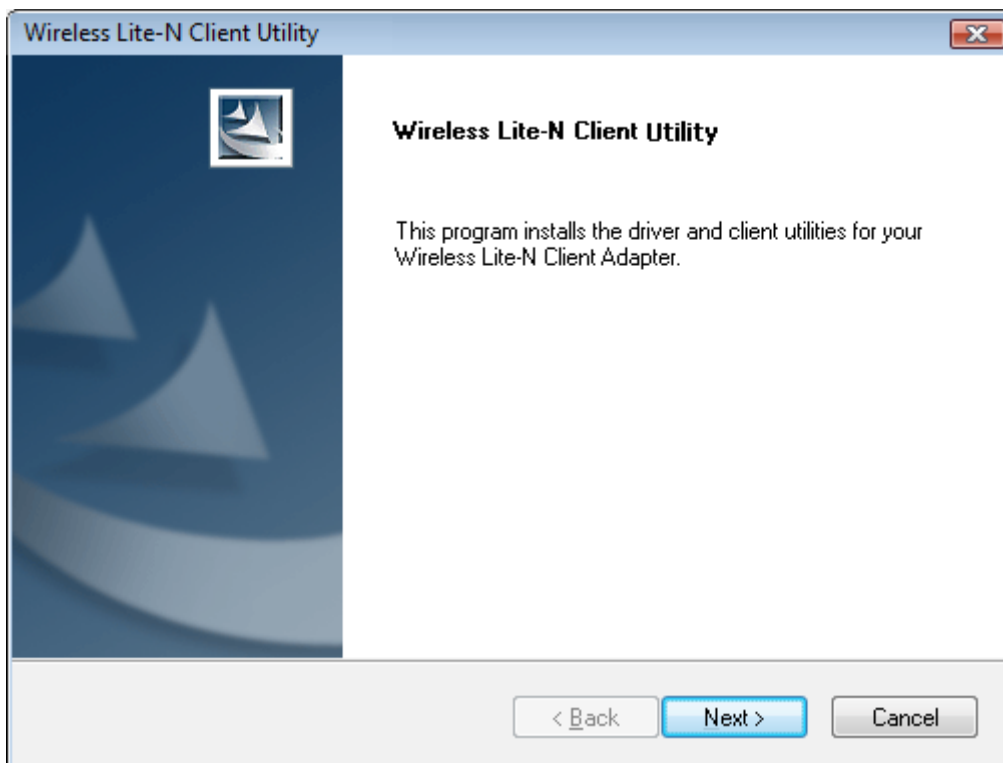


Figure 2-11

3. Wait a while for the setup as shown in Figure 2-12.

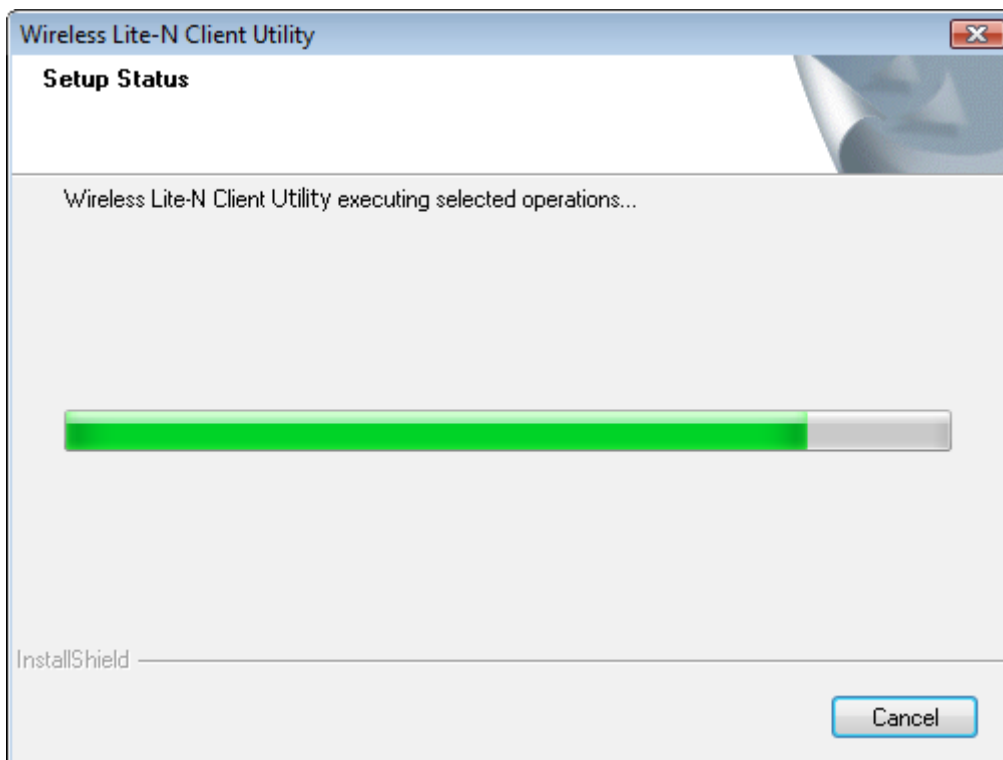


Figure 2-12

Note:

For Windows Vista, the Setup Wizard will notify you about the Windows Security with the installation during these steps (shown in XFigure 2-13). Our drivers have been tested

thoroughly, and are able to work with the operating system. Click **Installation this driver software anyway** to continue the Installation.

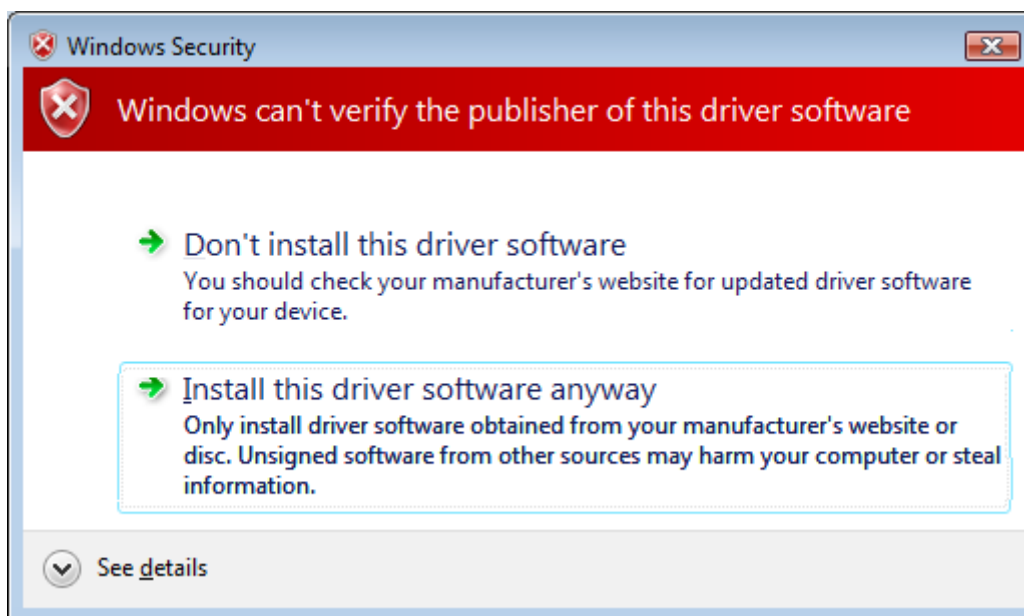


Figure 2-13

4. Then you will see Figure 2-14. Click **Finish** to complete.

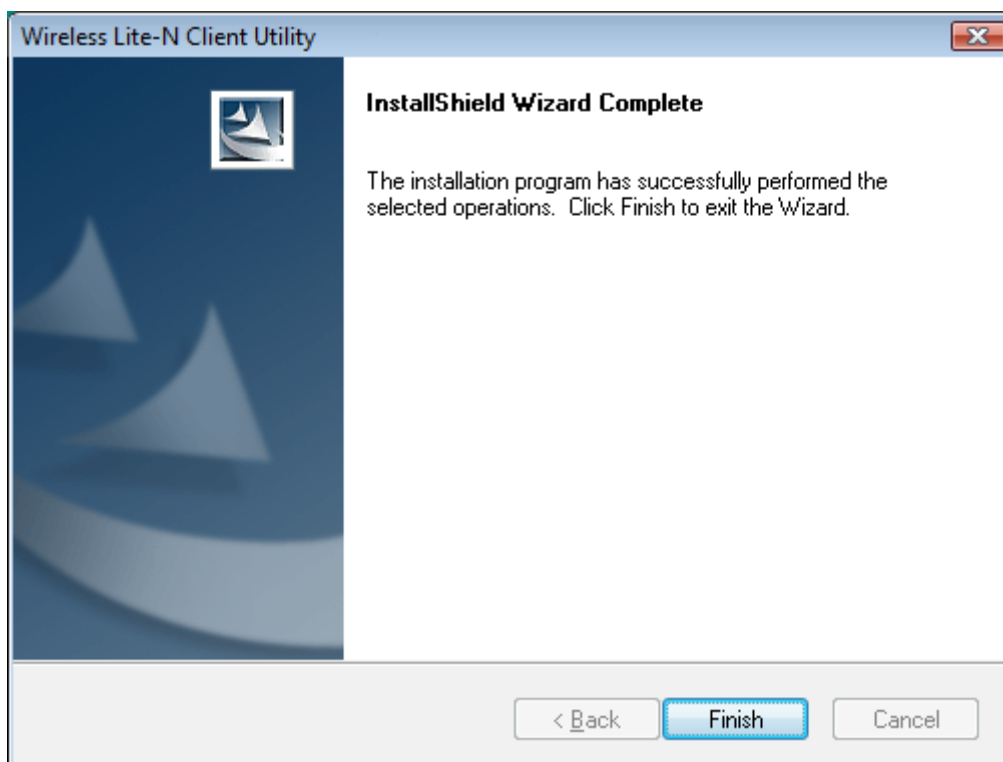


Figure 2-14

2.2.3 For Windows 7

1. Insert the Resource CD into your CD-ROM drive. To continue, find the CD/DVD drive where the installation CD was placed. Open **RNX-N150HG** folder, and double-click **Setup.exe**. Then you will see Figure 2-15.

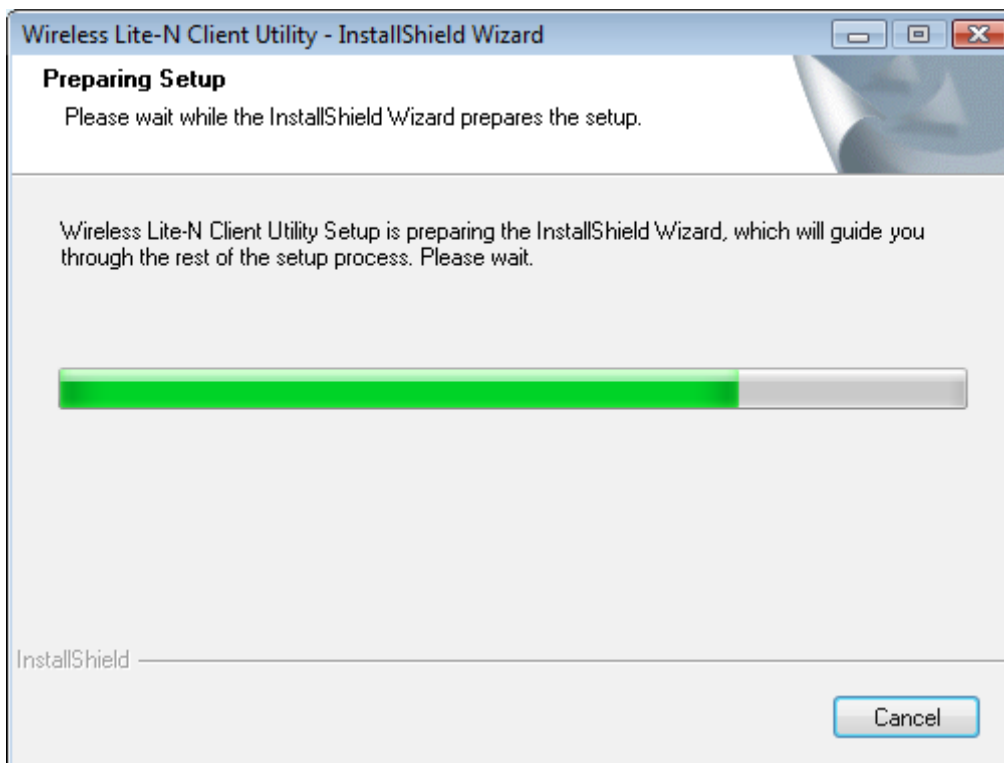


Figure 2-15

2. Soon, Figure 2-16 will display after a moment. Click **Next** to continue.

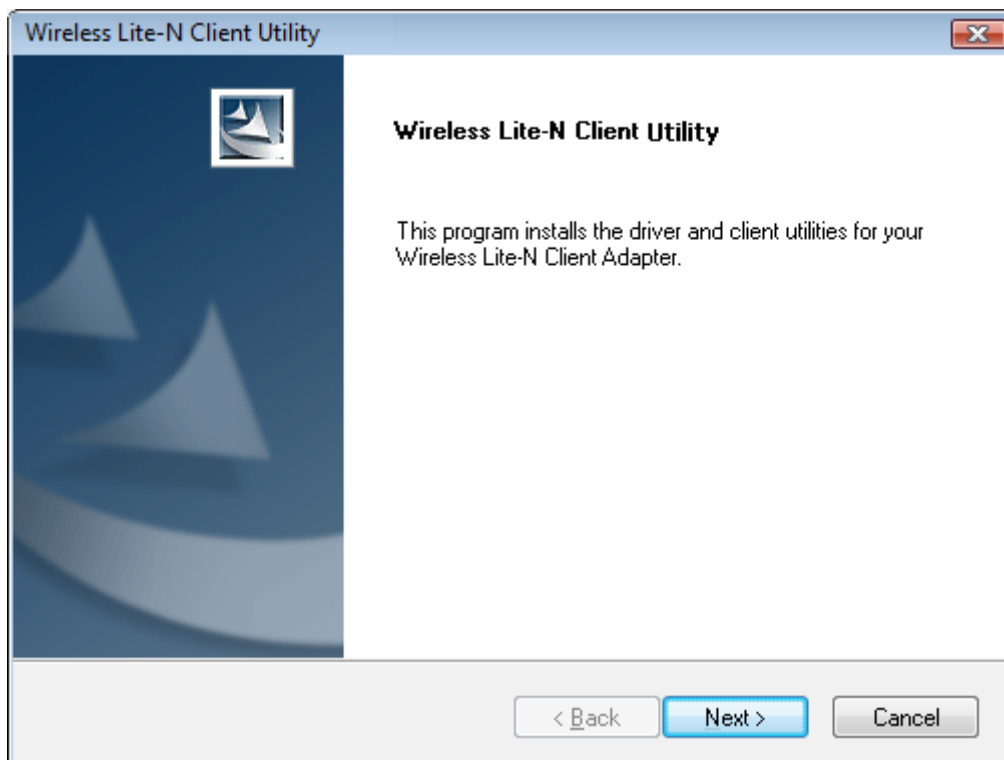


Figure 2-16

3. Wait a while for the setup as shown in Figure 2-17.

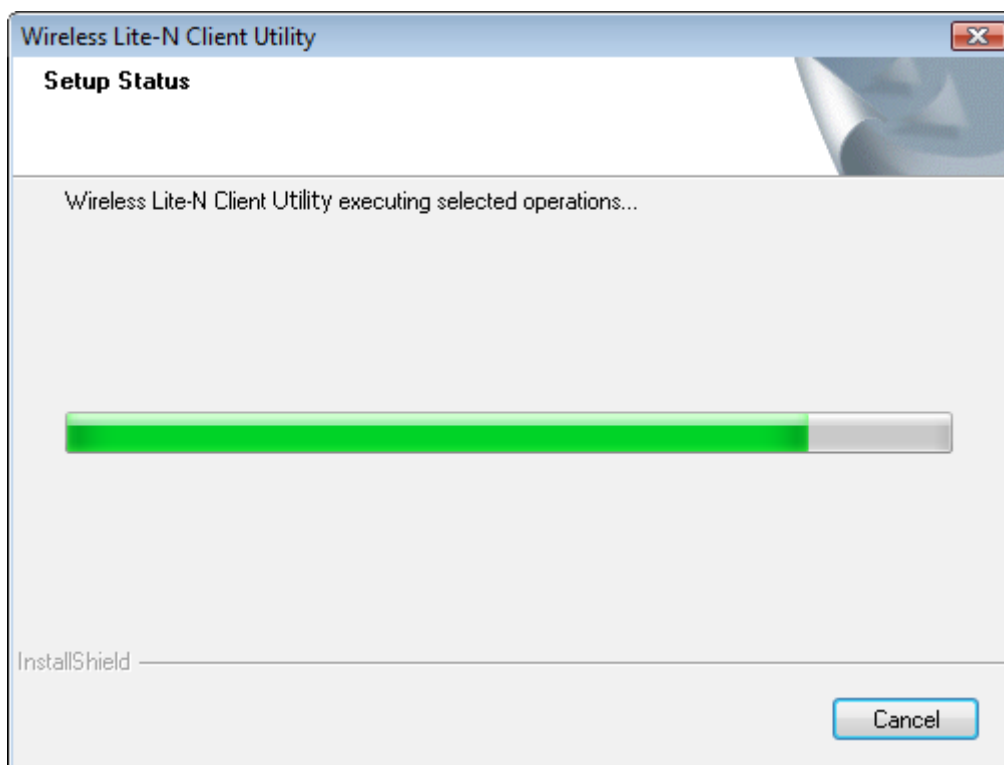


Figure 2-17

Note:

For Windows Vista, the Setup Wizard will notify you about the Windows Security with the installation during these steps (shown in XFigure 2-18). Our drivers have been tested thoroughly, and are able to work with the operating system. Click **Installation this driver software anyway** to continue the installation.

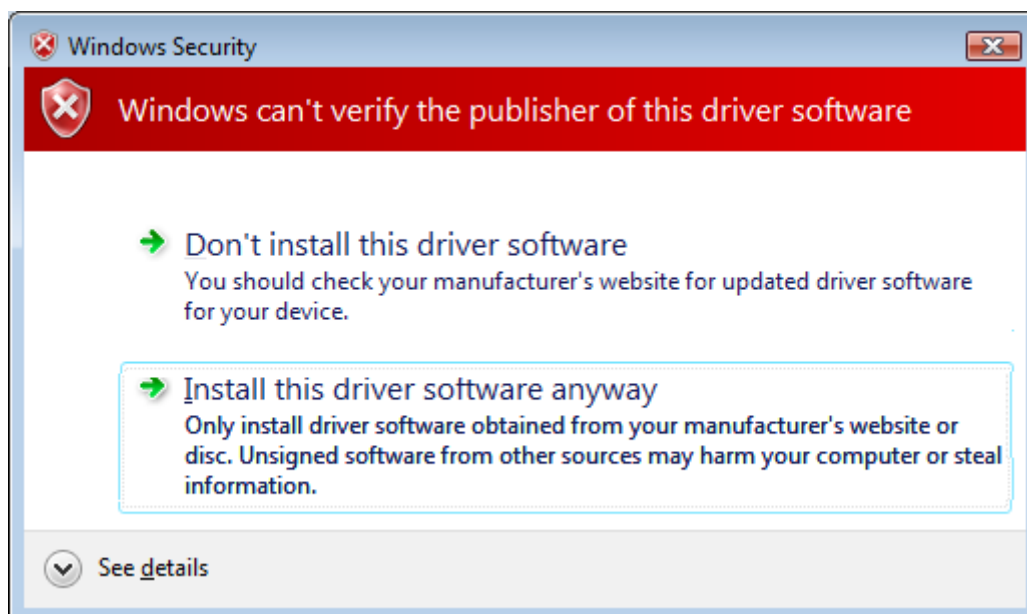


Figure 2-18

4. Then you will see Figure 2-19. Click **Finish** to complete.

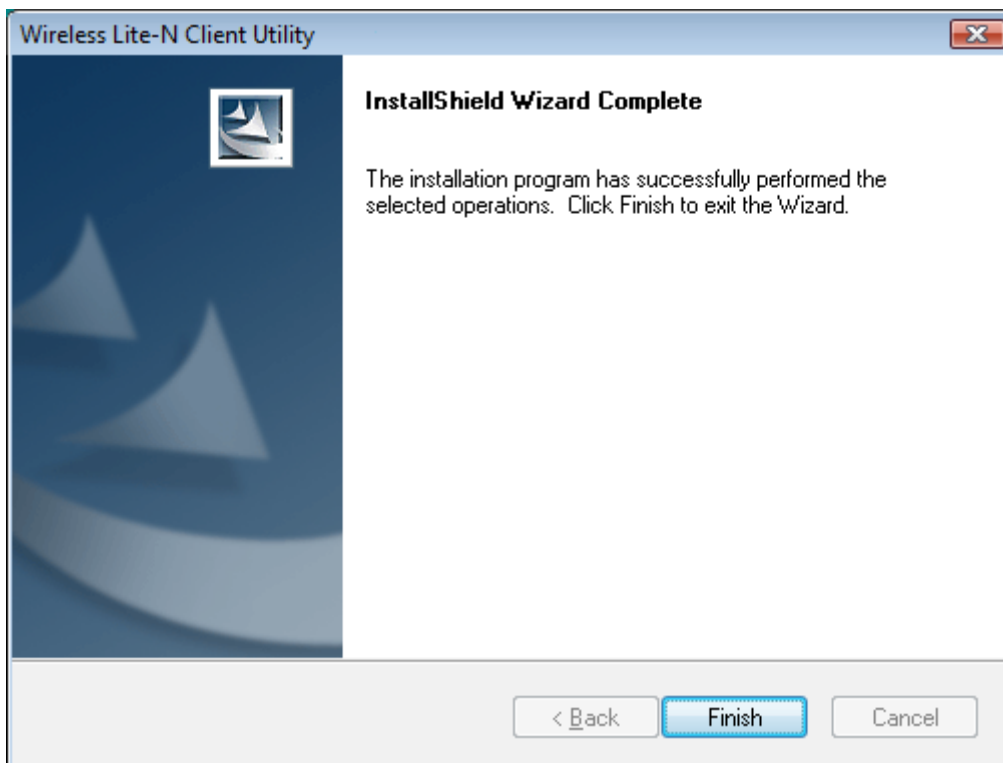



Figure 2-19


Chapter 3 Configuration Guide


3.1 For Windows XP


RNX-N150HG can be configured by Wireless Lite-N Client Utility (**UTILITY**) in Windows XP & 2000. This chapter describes how to configure your Adapter for wireless connectivity on your Wireless Local Area Network (WLAN) and use the data security encryption features.


The configuration of the adapter in Windows XP is similar with that of Windows 2000. This User Guide takes Windows XP for example.

After Installing the Adapter, the Adapter's tray icon  will appear in your system tray. It appears at the bottom of the screen, and shows the signal strength using color and the received signal strength indication (RSSI).

 If the icon is gray, there is no connection.

 If the icon is red, there is poor signal strength and the RSSI is less than 5dB.

 If the icon is yellow, there is poor signal strength and the RSSI is between 5dB and 10dB.

 If the icon is green, there is good signal strength and the RSSI is between 10dB and 20dB.

 If the icon is green, there is excellent signal strength and the RSSI is more than 20dB.

Double-click the icon and the **UTILITY** will run. You can also run the utility by clicking the

Start→**All Programs**→**Rosewill**→**Wireless Lite-N Client Utility**. The **UTILITY** provides some integrated and easy tools to:

- Display current status information
- Edit and add configuration profiles
- Display current diagnostics information

The section below introduces these above capabilities.

3.1.1 Current Status

The Current Status tab contains general information about the program and its operations. The Current Status tab needn't any configurations.

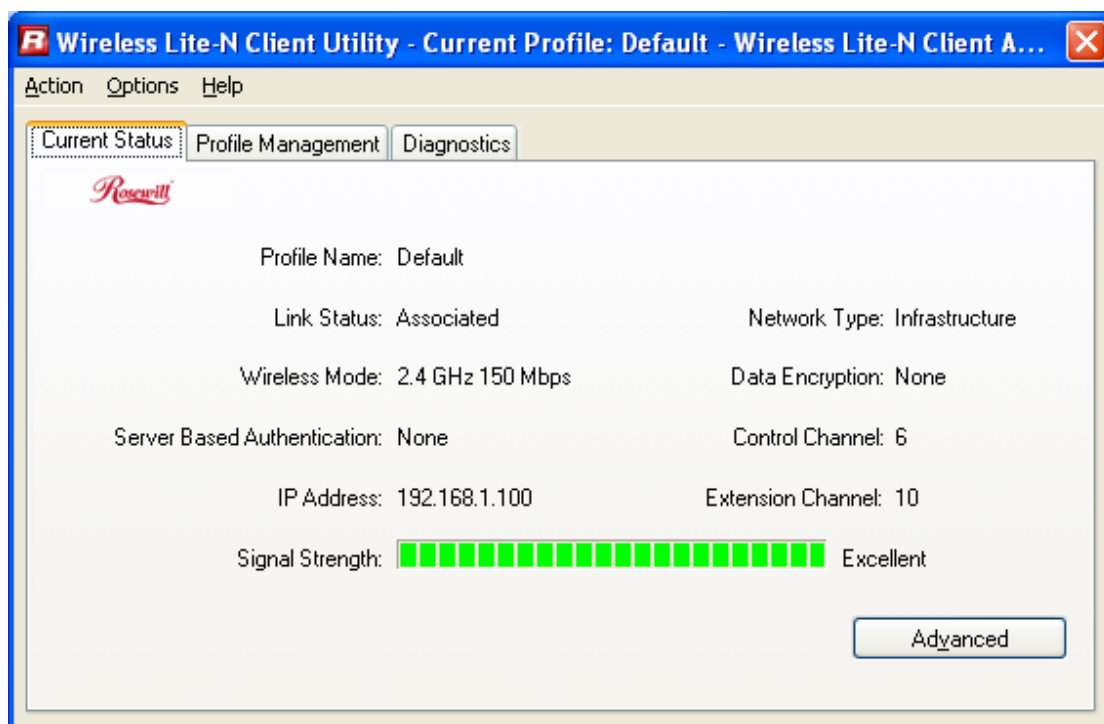


Figure 3-1

The following table describes the items found on the Current Status screen.

- **Profile Name** - This shows the name of current selected configuration profile. The configuration of Profile name will be described on the **General** tab of **Profile Management**.
- **Link Status** - This shows whether the station is associated to the wireless network.
- **Wireless Mode** - Here displays the wireless mode.
- **Network Type** - The type of network and the station currently connected are shown here. The options include:
 - Infrastructure (access point)
 - Ad Hoc

Note:

You can configure the network type and wireless mode on the **Advanced** tab of **Profile Management**.

- **IP Address** - This displays the computer's IP address.
- **Control Channel** - This shows the currently connected channel.
- **Data Encryption** - Here displays the encryption type the driver is using. You can configure it on the **Security** tab of **Profile Management**.
- **Server Based Authentication** - This shows whether the server based authentication is used.
- **Signal Strength** - This shows the strength of the signal.

Click **Advanced** on the screen above, you can see advanced information about the program and its operations.

3.1.2 Profile Management

Click the Profile Management tab of the **UTILITY** and the next screen will appear (shown in XFigure 3-2X). The Profile Management screen provides tools to:

- Add a new profile
- Modify a profile
- Remove a profile
- Activate a Profile
- Import a Profile
- Export a Profile
- Scan Available Networks
- Order profiles

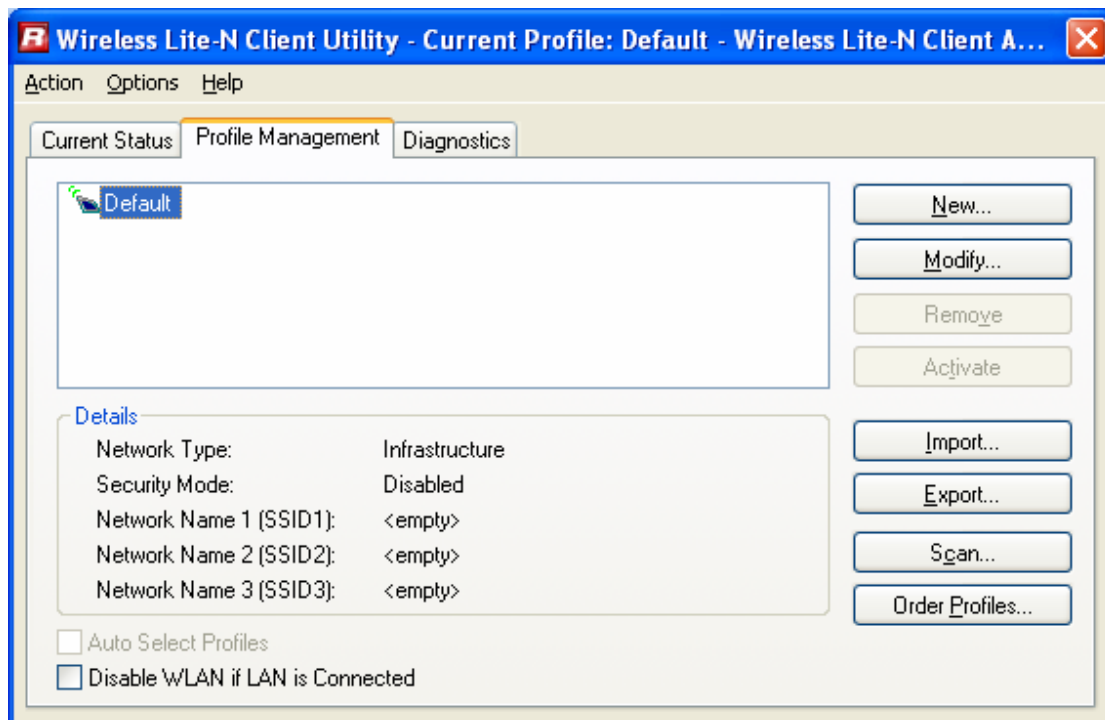


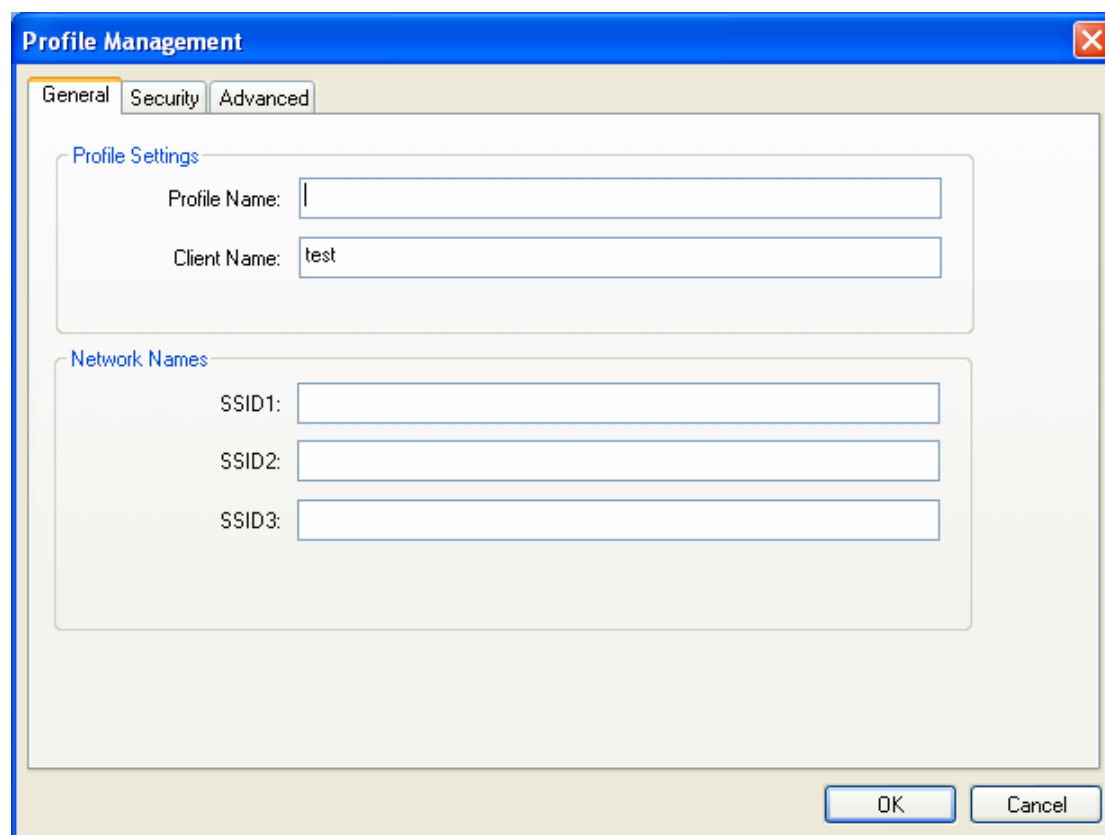
Figure 3-2

3.1.2.1 Add or Modify a Configuration Profile

To add a new configuration profile, click **New** on the Profile Management tab. To modify a configuration profile, select the configuration profile from the Profile list and click **Modify**. Then you will see the Management dialog box (shown in XFigure 3-3).

1. Edit the General tab

- **Profile Name** - Please enter the Profile name which identifies the configuration profile. This name must be unique. Note that the profile names are not case-sensitive.
- **Client Name** - Please enter the Profile name which identifies the client machine.
- **Network Names (SSIDs)** - Please enter the IEEE 802.11 wireless network name. This field has a maximum limit of 32 characters.



The screenshot shows a dialog box titled "Profile Management" with a close button (X) in the top right corner. The dialog has three tabs: "General", "Security", and "Advanced". The "General" tab is selected. Under "Profile Settings", there are two text input fields: "Profile Name:" (empty) and "Client Name:" (containing "test"). Under "Network Names", there are three text input fields: "SSID1:", "SSID2:", and "SSID3:", all of which are empty. At the bottom right of the dialog are "OK" and "Cancel" buttons.

Figure 3-3

2. Edit the Security tab

Select the Security tab in the screen above, and then you can edit the fields to configure the profile. To define the security mode, select the radio button of the desired security mode as follows.

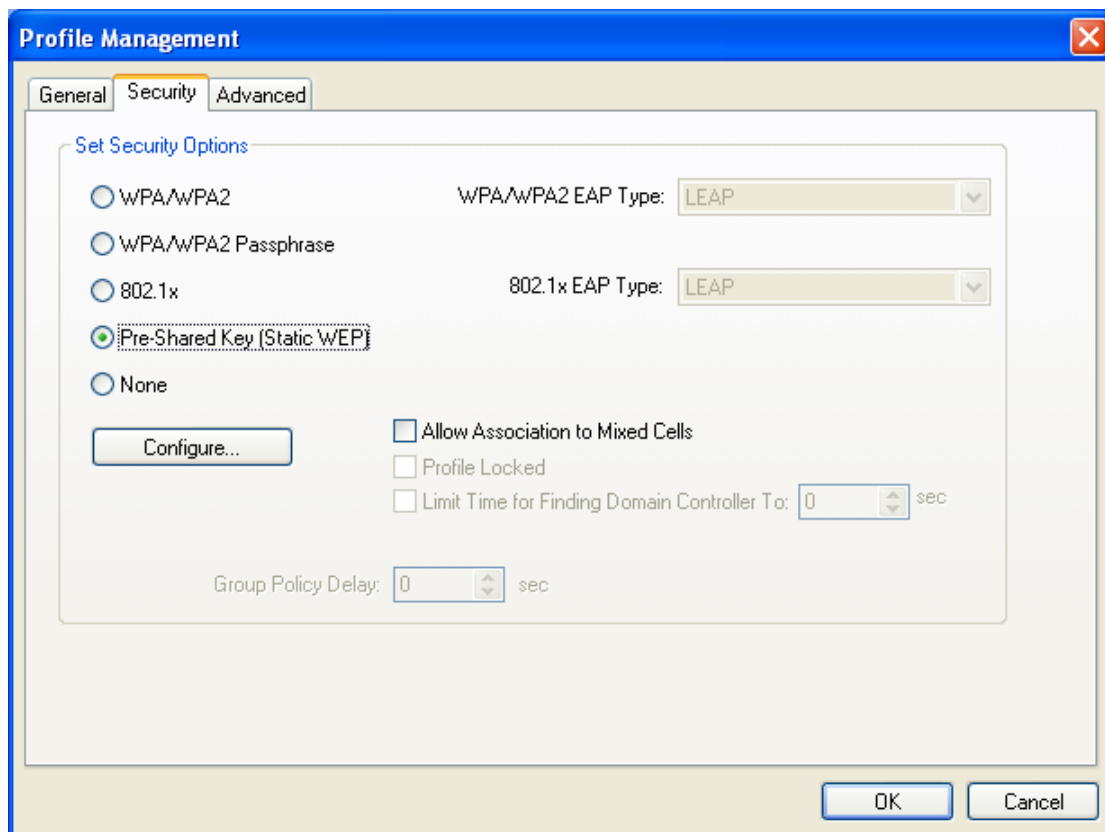


Figure 3-4

- **WPA/WPA2:** Wi-Fi Protected Access
- **WPA/WPA2 Passphrase:** Wi-Fi Protected Access Passphrase
- **802.1x:** Enables 802.1x security.
- **Pre-Shared Key (Static WEP):** Enables the use of shared keys that are defined on both the access point and the station. To define shared encryption keys, choose the Shared Key radio button and click **Configure** to fill in the Define Shared Keys window (shown in Figure 3-5X).
- **None:** No security (not recommended).

Note:

If the access point which the Adapter is associated has WEP set and the client has WEP enabled, make sure that **Allow Association to Mixed Cells** is checked on the HSecurity tab to allow association. To complete WEP encryption configuration, you must select the 802.11 Authentication Mode as appropriate on the **Advanced** tab of this **Profile Management** dialog.

To configure the Encryption Keys under the Pre-Shared keys (Static WEP) Security mode:

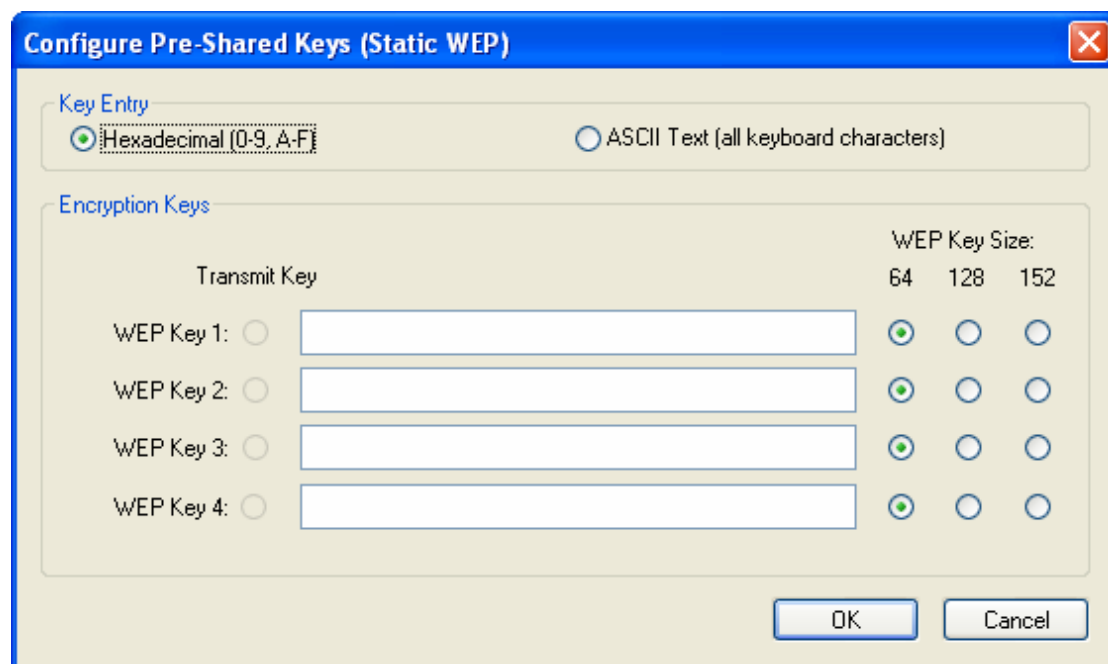


Figure 3-5

Note:

Select different **Security Options**, the configurations are different; you can select the appropriate security option and configure the exact key as your need.

3. Edit the Advanced tab

This screen below allows you to make advanced configuration for the profile.

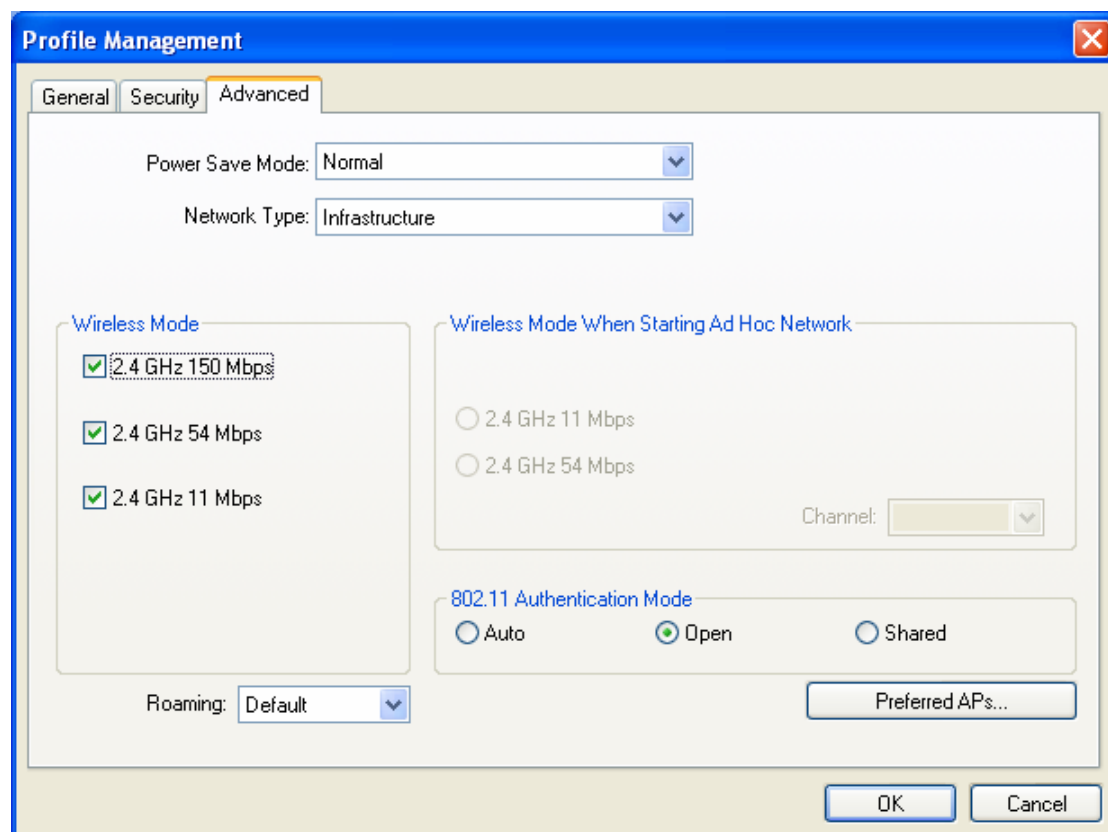


Figure 3-6

- **Power Save Mode** - Please select the power save mode in the drop-down list.
 - **Maximum** - Selects maximum mode to let the access point buffer incoming messages for the Adapter. The Adapter will detect the access point if any messages are waiting periodically.
 - **Normal** - Normal mode uses maximum when retrieving a large number of packets, then switches back to power save mode after retrieving the packets.
 - **Off** - Turns power saving off, thus powering up the Wireless USB Adapter continuously for a short message response time.
- **Network Type** - There are basically two modes of networking:
 - **Infrastructure** - All wireless clients will connect to an access point or wireless router.
 - **Ad-Hoc** - Directly connecting to another computer, for peer-to-peer communication, using wireless network adapters on each computer, such as two or more RNX-N150HG wireless adapters.

☞ **Note:**

- 1) An Infrastructure network contains an Access Point or wireless router. All the wireless devices or clients will connect to the wireless router or access point.
 - 2) An Ad-Hoc network contains only clients, such as laptops with wireless desktop adapters. All the adapters must be in Ad-Hoc mode to communicate.
- **Wireless Mode** - Specifies 2.4 GHz 150 Mbps, 2.4 GHz 54 Mbps or 2.4 GHz 11 Mbps operation in an access point network. The Wireless adapter must match the wireless mode of the access point with which it associates.
 - **Wireless Mode when Starting an HAd Hoc Network** - Specifies 2.4 GHz 54/11 Mbps to start an Ad Hoc network if no matching network name is found after scanning all available modes. This mode also allows the selection of the channel that the Wireless Adapter uses. The channels available depend on the regulatory domain. If the adapter finds no other ad hoc adapters, the channel that the adapter starts the ad hoc network with will be selected automatically. The Adapter must match the wireless mode and channel of the clients it associates.
 - **802.11 Authentication Mode** - Select which mode the Adapter uses to authenticate to an access point:
 - **Auto** - Automatic causes the adapter to attempt authentication using shared, but switches it to open authentication if shared fails.
 - **Open** - Open System enables an adapter to attempt authentication regardless of its WEP settings. It will only associate with the access point if the WEP keys on both the adapter and the access point match.
 - **Shared** - Shared-key only allows the adapter to associate with access points that have the same WEP key.

For infrastructure (access point) networks, click **Preferred APs...** to specify four access points at most to the client adapter that attempts to be associated to the access points. The four access points have different priorities; the frontal has the higher priority.

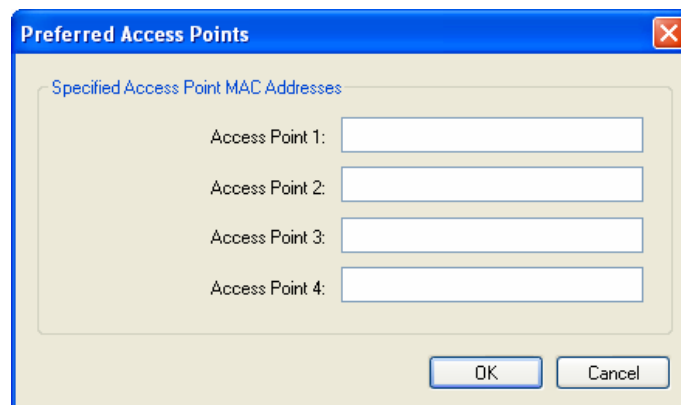


Figure 3-7

3.1.2.2 Remove a profile

1. Go to the Profile Management tab (shown in XFigure 3-2X).
2. Select the profile name in the Profiles List.
3. Click **Remove**.

 **Note:**

The profile being used can't be removed.

3.1.2.3 Switch another Profile

1. Go to the Profile Management screen (shown in XFigure 3-2X).
2. Select the profile name required in the Profiles List.
3. Click **Activate**.

3.1.2.4 Export a Profile

1. From the Profile Management screen (shown in XFigure 3-2X), highlight the profile to export.
2. Click **Export...**, the Export Profile window will then appear below.
3. Browse the directory to export the profile to.
4. Click **Save**. The profile should then be exported to the specified location.

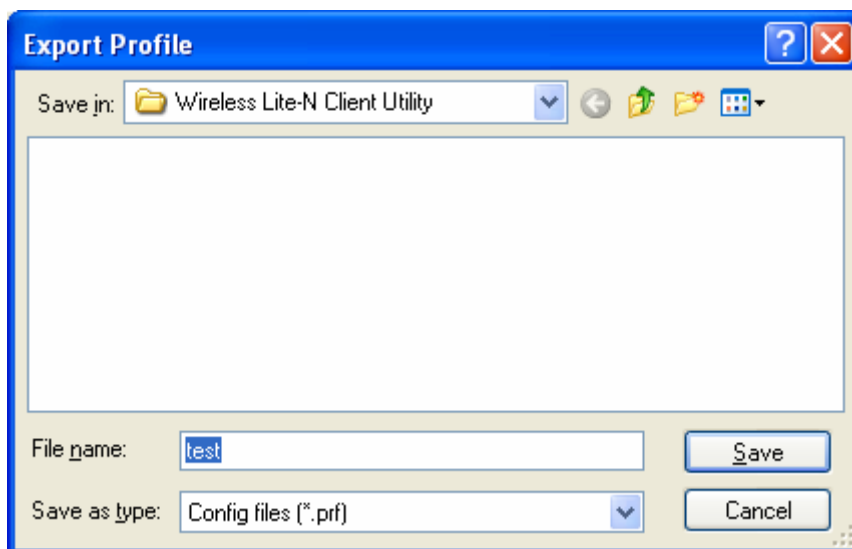


Figure 3-8

3.1.2.5 Import a Profile

1. From the Profile Management screen (shown in XFigure 3-2), click **Import....** Then the Import Profile will appear below.
2. Browse to the directory where the profile is located.
3. Highlight the profile name.
4. Click **Open**, the imported profile will then appear in the Profiles List.

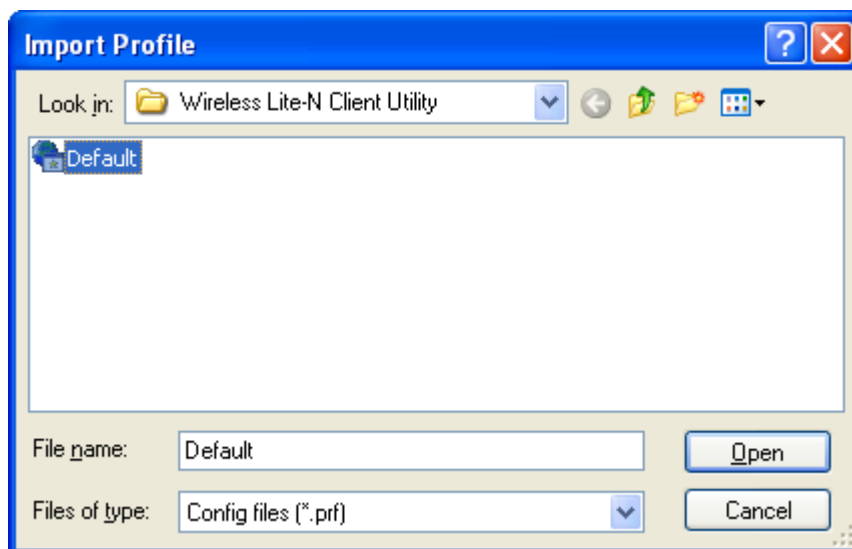


Figure 3-9

3.1.2.6 Scan Available Networks

1. Click **Scan** on the Profile Management screen (shown in XFigure 3-2X), the Available Infrastructure and Ad Hoc Networks window will appear below.
2. Click **Refresh** to refresh the list at any time.
3. Highlight a network name and click **Activate** to connect to an available network. If no

configuration profile exists for that network, the Profile Management window will open the **General** tab screen. Fill in the Profile name and click **OK** to create the configuration profile for that network.

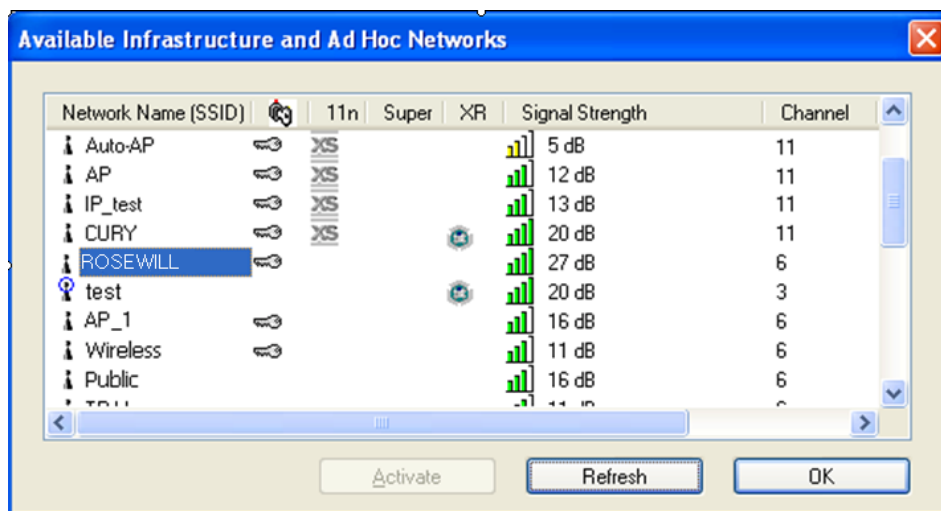


Figure 3-10

3.1.2.7 Auto Profile Selection Management

The auto selection feature allows the adapter to automatically select a profile from the list of profiles and use it to connect to the network. To add a new profile into the Auto Selected Profiles list, please follow these steps.

1. On the Profile Management screen (shown in XFigure 3-2X), click **Order Profiles....**
2. The Auto Profiles Selection management window will appear (shown in XFigure 3-11) with a list of all created profiles in the Available Profiles.

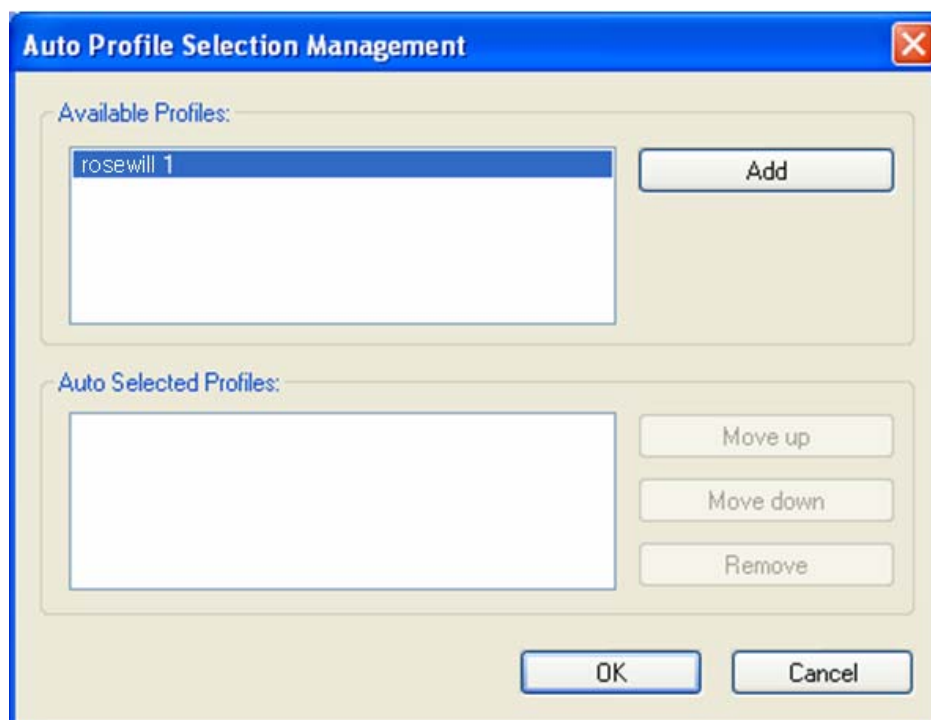


Figure 3-11

3. Highlight the profiles to add to auto profile selection, and click **Add**. The profile will appear in the Auto Selected Profiles box.
4. Highlight a profile in the Auto Selected Profiles box.
5. Click **Move Up** or **Move Down** as appropriate.

 **Note:**

The first profile in the Auto Selected Profiles box has highest priority, while the last profile has the lowest priority.

6. Click **OK**.
7. Check the **Auto Select Profiles** checkbox on the **Profile Management** tab (shown in XFigure 3-2).

 **Note:**

When auto profile selection is enabled by checking **Auto Select Profiles** on the **Profile Management** tab, the client adapter will scan for an available network. The profile with the highest priority and the same SSID as one of the found networks will be used to connect to the network. If the connection fails, the client adapter will try the next highest priority profile that matches the SSID until an available network is found.

3.1.3 Diagnostics

The **Diagnostics** tab of the Wireless Lite-N Client Utility (**UTILITY**) provides buttons used to retrieve receiving and transmitting statistics. The Diagnostics tab does not require any configuration.

The Diagnostics tab lists the following receiving and transmitting diagnostics for frames received or transmitted by the wireless network adapter:

- Multicast frames transmitted and received
- Broadcast frames transmitted and received
- Unicast frames transmitted and received
- Total bytes transmitted and received

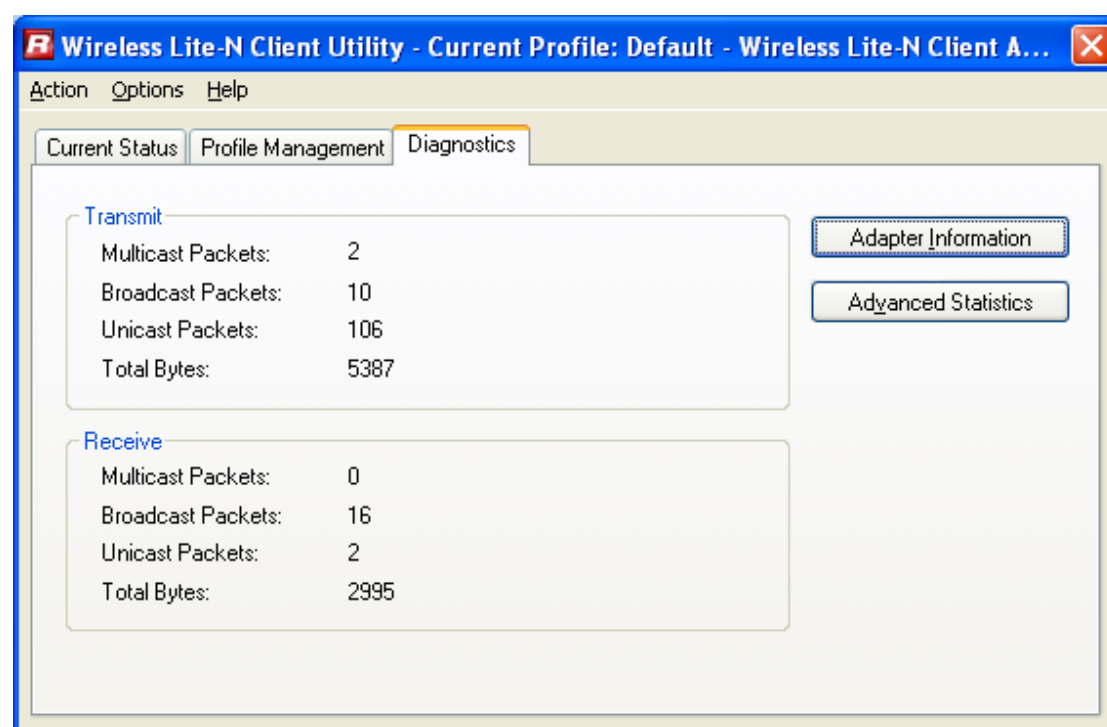


Figure 3-12

3.1.3.1 Check Driver Information

Click the **Adapter Information** button in the screen above, you will see the adapter information, including general information about the wireless network adapter and the Network Driver Interface Specification (NDIS) driver. Access the adapter information from the Diagnostics tab.

- **Card Name** - The name of the wireless network adapter.
- **MAC Address** - The MAC address of the wireless network adapter.
- **Driver** - The driver name and path of the wireless network adapter driver.
- **Driver Version** - The version of the wireless network adapter driver.
- **Driver Date** - The creation date of the wireless network adapter driver.
- **Client Name** - The name of the client computer.

3.1.3.2 Check Receive and Transmit Statistical Information

The **Advanced Statistics** show receiving and transmitting statistical information about the following receiving and transmitting diagnostics for frames received by or transmitted to the wireless network adapter.

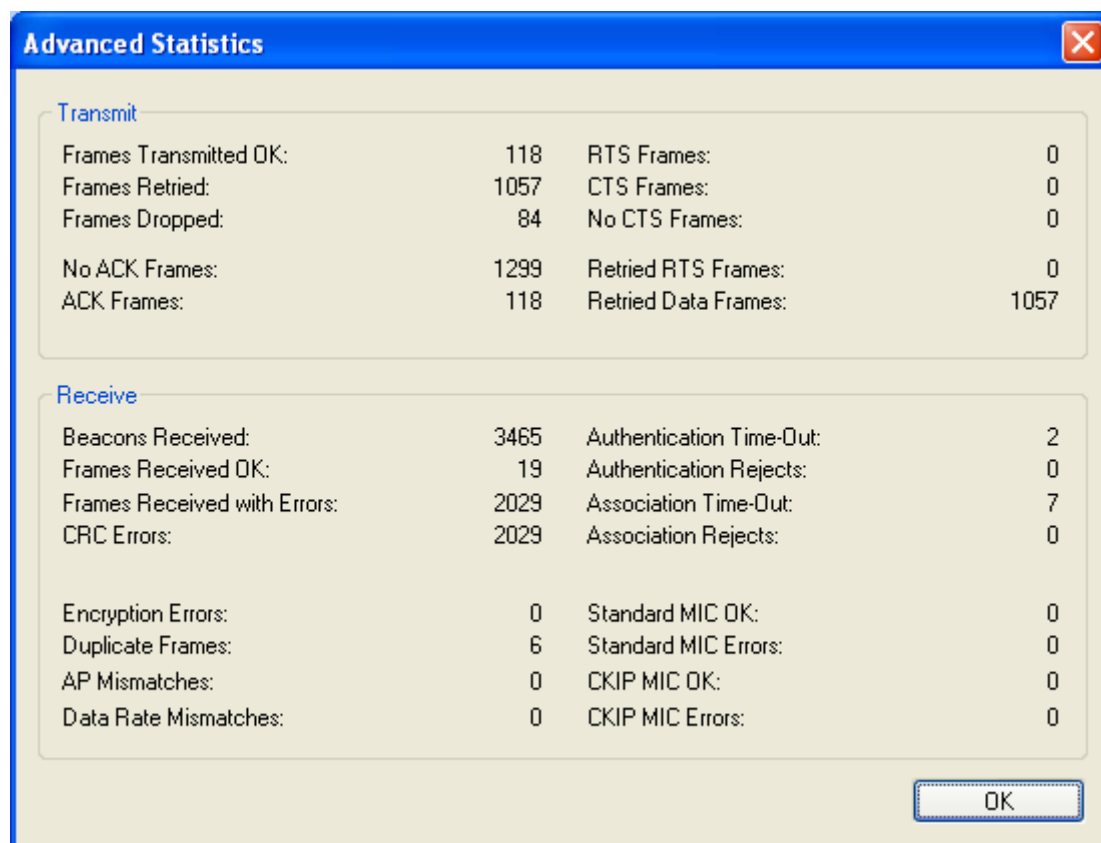



Figure 3-13

3.2 For Windows Vista

Wireless Lite-N Client Utility (**UTILITY**) is not available for Windows Vista. So after the Adapter's driver has been installed, we have to use Windows WLAN Autoconfig to establish a connection. Please follow the steps below.

1. Right-click the icon  at the bottom of your screen in your system tray and then select "Connect to a network".

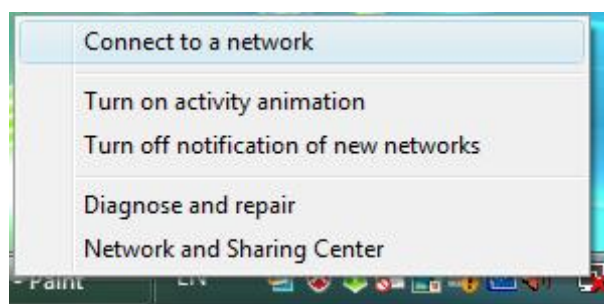


Figure 3-14

- This page will then display and you will see the available wireless network list. Select the SSID of your Access Point, take **rosewill** for example. Click **Connect**.

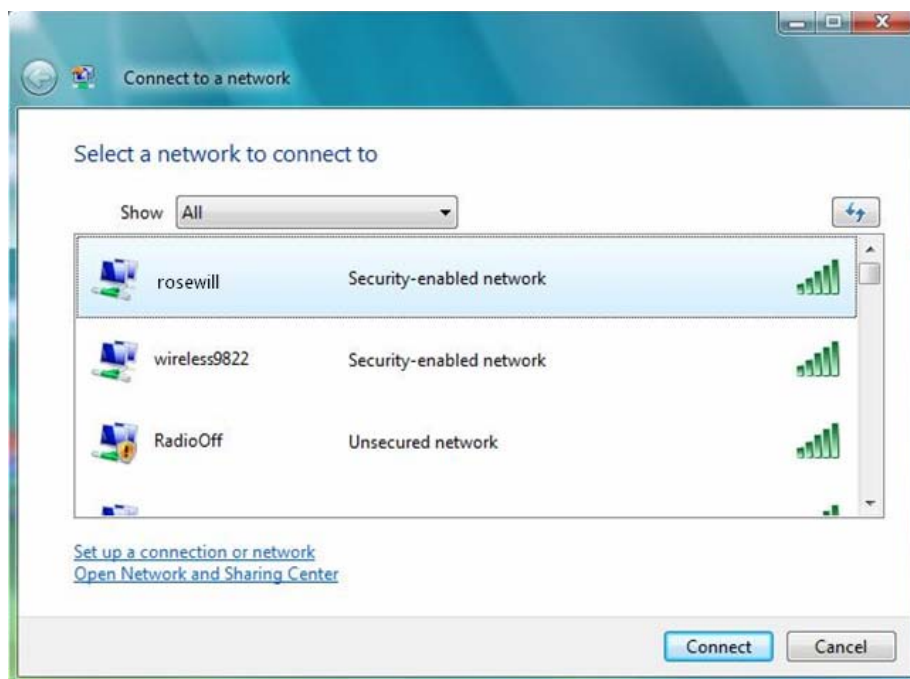


Figure 3-15 Select A Network

- Enter the key, take **1234567890** for example. And then click **Connect**.



Figure 3-16 Enter Security Key

4. If the key entered is correct, you will successfully connect to the network.

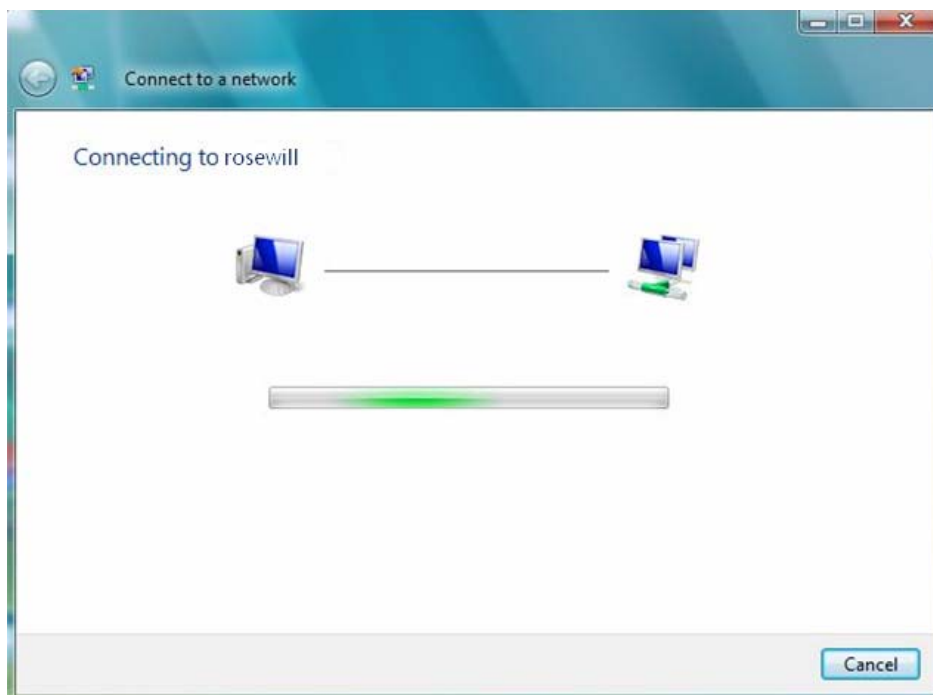


Figure 3-17 Connecting

5. Click **Close** to finish.

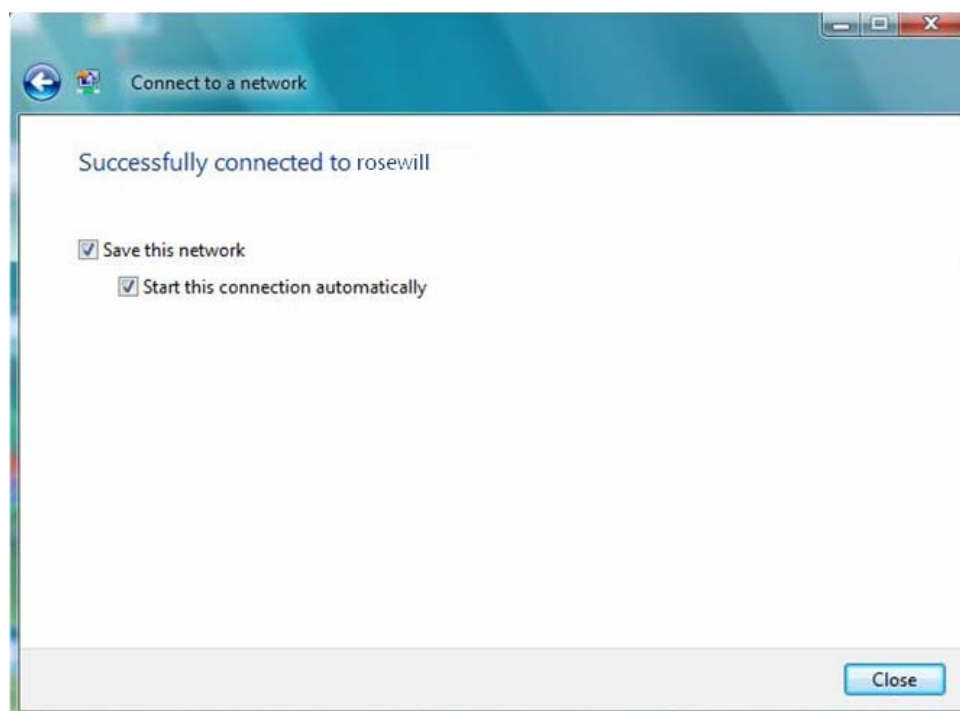


Figure 3-18 successfully Connected

3.3 For Windows 7

Wireless Lite-N Client Utility (**UTILITY**) is not available for Windows 7. So after the Adapter's driver has been installed, we have to use Windows WLAN Autoconfig to establish a connection. Please follow the steps below.


1. Right-click the icon  at the bottom of your screen in your system tray and then you will see the available wireless network list. Select the SSID of your Access Point, take **rosewill** for example. Click **Connect**.



Figure 3-19 Select A Network

2. If your wireless network is secured, you will be required to enter the security key as shown in Figure 3-20. Enter the passphrase, take **1234567890** for example. And then click **OK**.

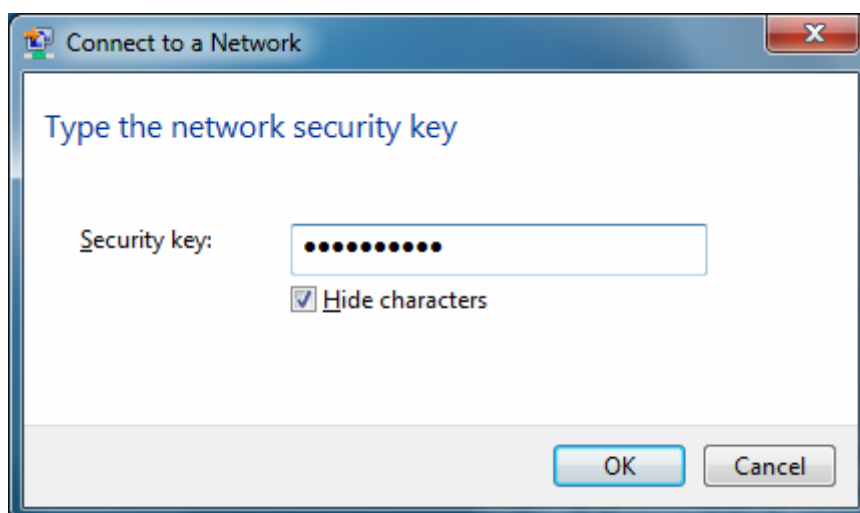


Figure 3-20 Enter Security Key

3. If the key entered is correct, you will successfully connect to the network as shown in Figure 3-21.

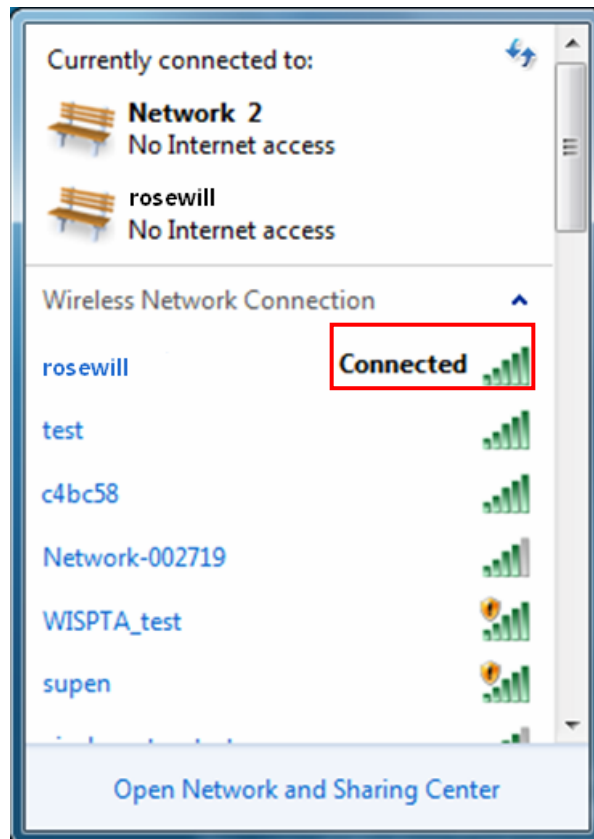


Figure 3-21 Connecting

Chapter 4 WPS Configuration

WPS (Wi-Fi Protected Setup) function allows you to add a new wireless device to an existing network quickly.

If the wireless card supports Wi-Fi Protected Setup (WPS), you can establish a wireless connection between wireless card and router using either Push Button Configuration (PBC) method or PIN method.

First, the WPS software should be installed. Insert the Resource CD into your CD-ROM drive. To continue, double-click **My Computer**, and then double-click the **CD/DVD** drive where the installation CD was placed. Open **RNX-N150HG** folder, and double-click **wps.exe**. Then you will see Figure 4-1.

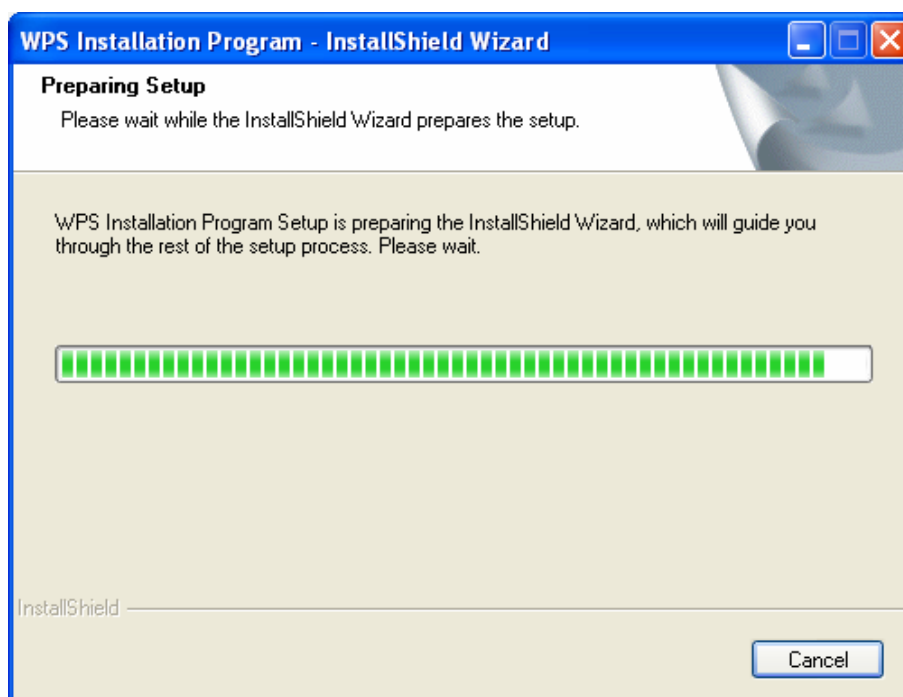


Figure 4-1

Then, please follow the step-by-step instruction to complete the WPS installation. After that, WPS function can be enabled. Here we will introduce two ways to configure the WPS.

4.1 PBC (Push Button Configuration) method

1. Firstly, press the WPS button of the router. There are two ways:
 - 1) Press the WPS button directly on the front panel of the Router shown in X Figure 4-2.



Figure 4-2

- 2) Open the Router's Web-based Utility and click **WPS** link on the left of the main

menu. Then X Figure 4-3 will appear. Click **Add device**, then you can see Figure 4-4. Select **Press the button of the new device in two minutes** and click **Connect**.

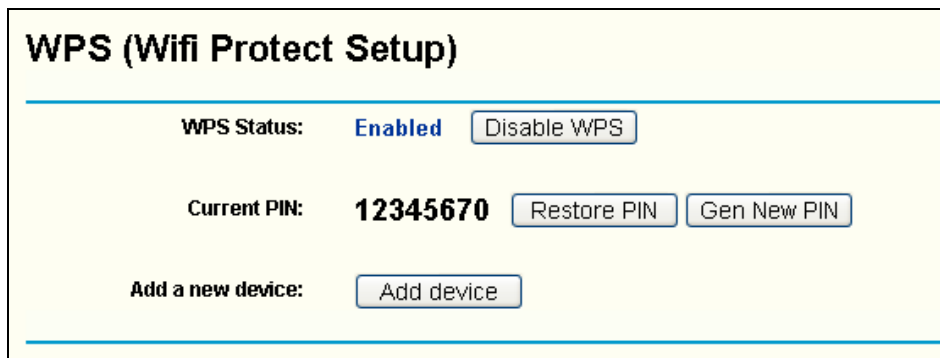


Figure 4-3

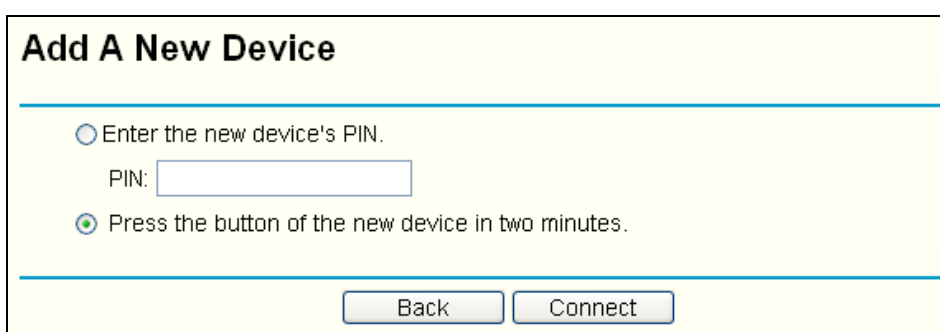



Figure 4-4

2. Secondly, press the WPS button of the adapter. There are two ways:
 - 1) Press and hold the WPS button of the adapter directly for 2 or 3 seconds.
 - 2) Double click the icon  on the desktop to open the WPS Utility and then you can see the welcome screen shown as Figure 4-5. Click **Next** to continue. Then select **Push the button on my access point** in the next screen shown in Figure 4-6 and click **Next**.

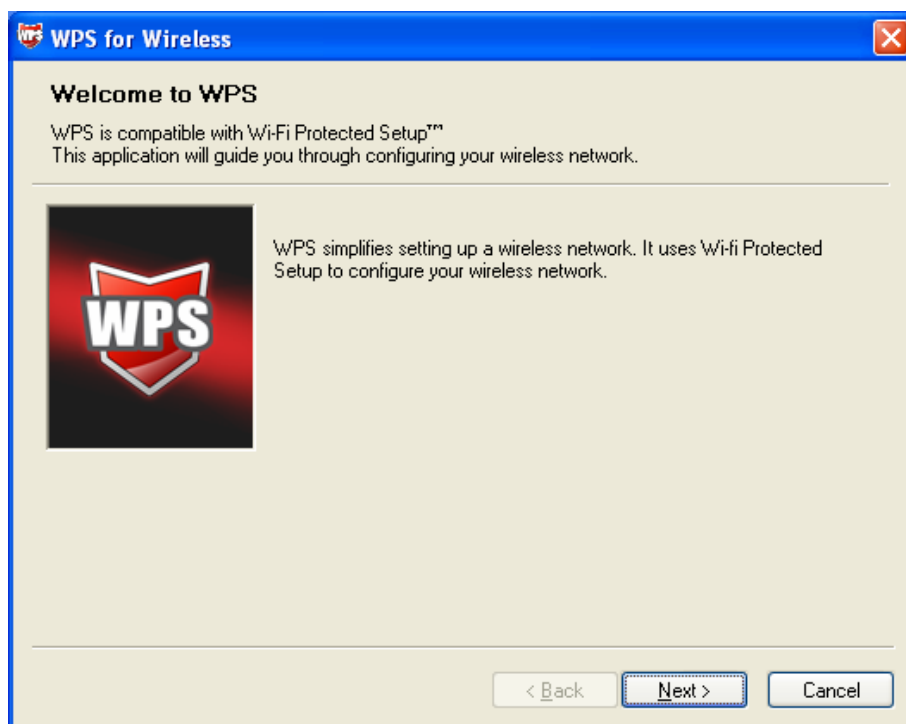


Figure 4-5

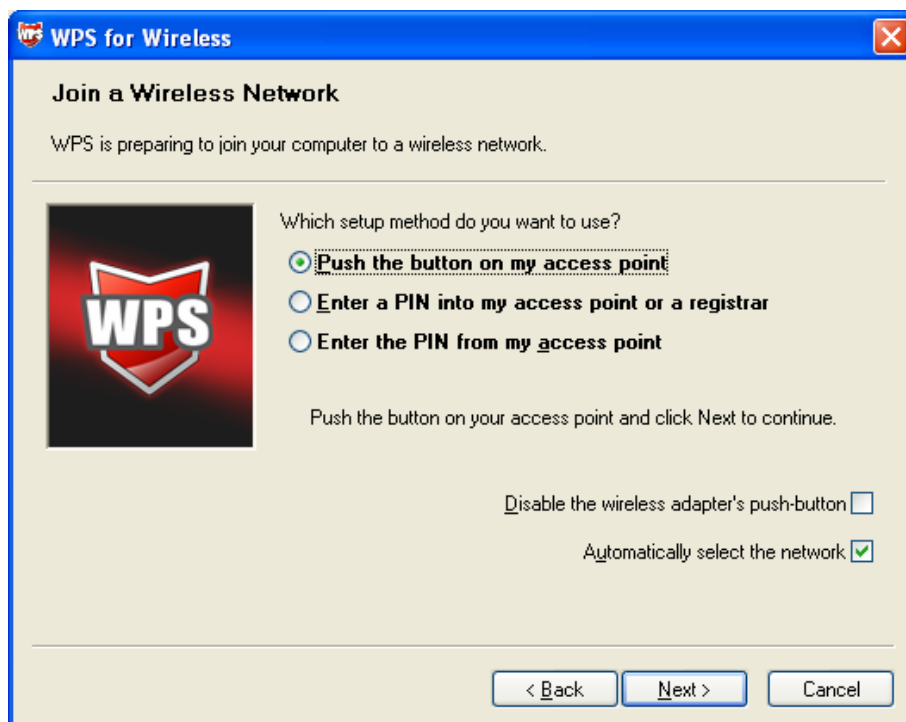


Figure 4-6

3. Then wait a minute until Figure 4-7 appears. Click **Finish** to complete the WPS configuration.

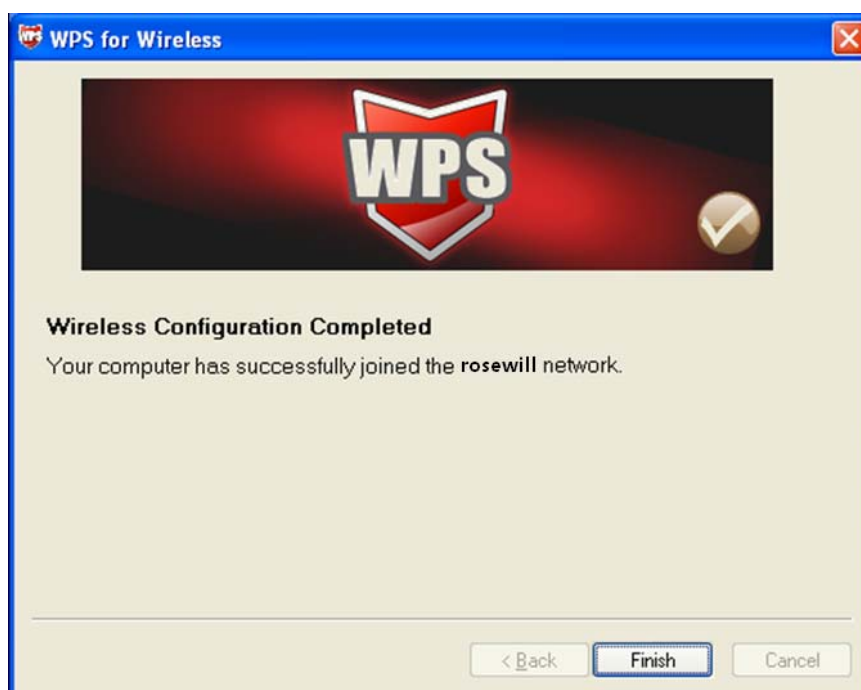


Figure 4-7


4.2 PIN method

There are two ways to configure the WPS by **PIN method**:

- 1) Enter a PIN into your AP device.
- 2) Enter the PIN from your AP device.

Following are the detailed configuration procedure of each way.

4.2.1 Enter a PIN into your AP device

1. Double click the icon  on the desktop to open the WPS Utility and then you can see the welcome screen shown as Figure 4-5 Click **Next** to continue. Figure 4-8 will appear. Select the second option, and you will see the PIN value of the adapter which is randomly generated. Click **Next**.

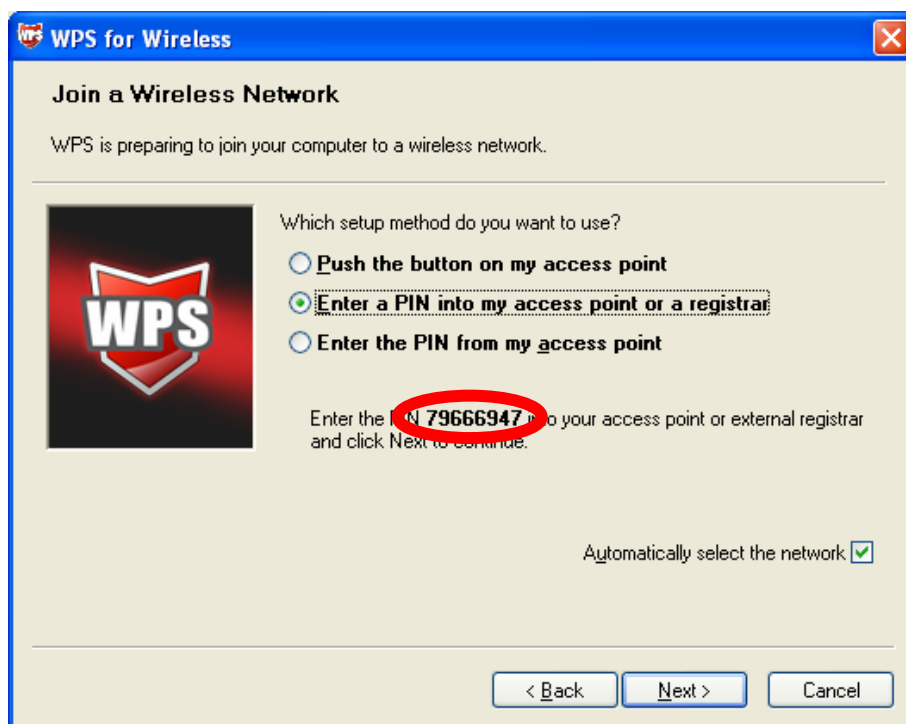


Figure 4-8

2. Open the Router's Web-based Utility and click **WPS** link on the left of the main menu. Then XFigure 4-3 will appear. Click **Add device**, then you can see X Figure 4-8. Select **Enter the new device's PIN** and enter the PIN value of the adapter shown in Figure 4-8, click **Connect**.

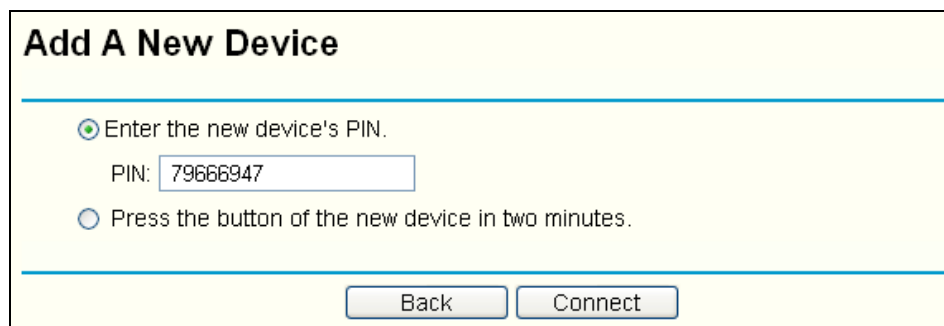


Figure 4-9

3. When Figure 4-7 appears, the WPS configuration is complete.

4.2.2 Enter the PIN from your AP device

1. Open the WPS Utility and you will see Figure 4-5 . Click **Next** to continue. Then Figure 4-10will appear. Select the third option and enter the PIN value which is labeled on the bottom of the Router. Click **Next**.

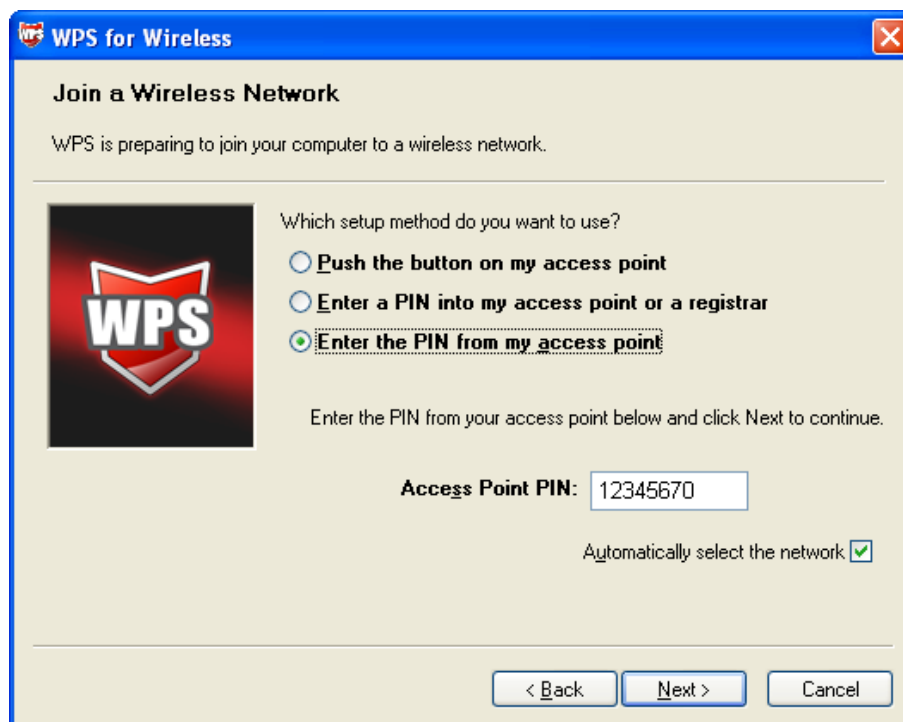


Figure 4-10

2. When Figure 4-7 appears, the WPS configuration is complete.

Note:

If you generate a new PIN code for your Router, please enter the new one instead.

Appendix A: Specifications

Normal	
Interface	USB 2.0 Interface
Standards	IEEE802.11n; IEEE802.11g; IEEE802.11b;
Operating System	Windows 2000/Windows XP/Windows Vista/Windows 7
Radio Data Rate	11b : 1/2/5.5/11Mbps 11g : 6/9/12/18/24/36/48/54Mbps 11n : up to 150Mbps
Modulation	11b:CCK,QPSK,BPSK; 11g:OFDM; 11n: QPSK,BPSK,16-QAM,64-QAM;
Media Access Protocol	CSMA/CA with ACK
Data Security	WPA/WPA2; 64/128-bit WEP; TKIP/AES
Frequency	2.4 ~ 2.4835GHz
Spread Spectrum	Direct Sequence Spread Spectrum (DSSS)
Safety & Emissions	FCC, CE

Environmental and Physical	
Operating Temp.	0°C~40°C (32°F~104°F)
Storage Temp.	-40°C– 70°C (-40°F~158°F)
Working Humidity	10% - 90% RH, Non-condensing
Storage Humidity	5% - 90% RH, Non-condensing

Appendix B: Glossary

- **802.11b** - The 802.11b standard specifies a wireless product networking at 11 Mbps using direct-sequence spread-spectrum (DSSS) technology and operating in the unlicensed radio spectrum at 2.4GHz, and WEP encryption for security. 802.11b networks are also referred to as Wi-Fi networks.
- **802.11g** - specification for wireless networking at 54 Mbps using direct-sequence spread-spectrum (DSSS) technology, using OFDM modulation and operating in the unlicensed radio spectrum at 2.4GHz, and backward compatibility with IEEE 802.11b devices, and WEP encryption for security.
- **Ad-hoc Network** - An ad-hoc network is a group of computers, each with a Wireless Adapter, connected as an independent 802.11 wireless LAN. Ad-hoc wireless computers operate on a peer-to-peer basis, communicating directly with each other without the use of an access point. Ad-hoc mode is also referred to as an Independent Basic Service Set (IBSS) or as peer-to-peer mode, and is useful at a departmental scale or SOHO operation.
- **DSSS - (Direct-Sequence Spread Spectrum)** - DSSS generates a redundant bit pattern for all data transmitted. This bit pattern is called a chip (or chipping code). Even if one or more bits in the chip are damaged during transmission, statistical techniques embedded in the receiver can recover the original data without the need of retransmission. To an unintended receiver, DSSS appears as low power wideband noise and is rejected (ignored) by most narrowband receivers. However, to an intended receiver (i.e. another wireless LAN endpoint), the DSSS signal is recognized as the only valid signal, and interference is inherently rejected (ignored).
- **FHSS - (Frequency Hopping Spread Spectrum)** - FHSS continuously changes (hops) the carrier frequency of a conventional carrier several times per second according to a pseudo-random set of channels. Because a fixed frequency is not used, and only the transmitter and receiver know the hop patterns, interception of FHSS is extremely difficult.
- **Infrastructure Network** - An infrastructure network is a group of computers or other devices, each with a Wireless Adapter, connected as an 802.11 wireless LAN. In infrastructure mode, the wireless devices communicate with each other and to a wired network by first going through an access point. An infrastructure wireless network connected to a wired network is referred to as a Basic Service Set (BSS). A set of two or more BSS in a single network is referred to as an Extended Service Set (ESS). Infrastructure mode is useful at a corporation scale, or when it is necessary to connect the wired and wireless networks.
- **Spread Spectrum** - Spread Spectrum technology is a wideband radio frequency technique developed by the military for use in reliable, secure, mission-critical communications systems. It is designed to trade off bandwidth efficiency for reliability, integrity, and security. In other words, more bandwidth is consumed than in the case of narrowband transmission, but the trade off produces a signal that is, in effect, louder and thus easier to detect, provided that the receiver knows the parameters of the spread-spectrum signal being broadcast. If a receiver is not tuned to the right frequency, a spread-spectrum signal looks like background noise. There are two main alternatives, Direct Sequence Spread Spectrum (DSSS) and Frequency

Hopping Spread Spectrum (FHSS).

- **SSID** - A **S**ervice **S**et **I**dentification is a thirty-two character (maximum) alphanumeric key identifying a wireless local area network. For the wireless devices in a network to communicate with each other, all devices must be configured with the same SSID. This is typically the configuration parameter for a wireless PC card. It corresponds to the ESSID in the wireless Access Point and to the wireless network name. *See also* Wireless Network Name and ESSID.
- **WEP** - (**W**ired **E**quivalent **P**rivacy) - A data privacy mechanism based on a 64-bit or 128-bit or 152-bit shared key algorithm, as described in the IEEE 802.11 standard. To gain access to a WEP network, you must know the key. The key is a string of characters that you create. When using WEP, you must determine the level of encryption. The type of encryption determines the key length. 128-bit encryption requires a longer key than 64-bit encryption. Keys are defined by entering in a string in HEX (hexadecimal - using characters 0-9, A-F) or ASCII (American Standard Code for Information Interchange – alphanumeric characters) format. ASCII format is provided so you can enter a string that is easier to remember. The ASCII string is converted to HEX for use over the network. Four keys can be defined so that you can change keys easily.
- **Wi-Fi** - A trade name for the 802.11b wireless networking standard, given by the Wireless Ethernet Compatibility Alliance (WECA, see <http://www.wi-fi.net>), an industry standards group promoting interoperability among 802.11b devices.
- **WLAN** - (**W**ireless **L**ocal **A**rea **N**etwork) - A group of computers and associated devices communicate with each other wirelessly, which network serving users are limited in a local area.
- **WPA** - (**W**i-Fi **P**rotected **A**ccess) - A wireless security protocol uses TKIP (Temporal Key Integrity Protocol) encryption, which can be used in conjunction with a RADIUS server.

Appendix C: FAQ

This chapter provides solutions to problems that may occur during the installation and operation of the Wireless USB Adapter. Read the descriptions below to solve your problems.

1. The Wireless USB Adapter does not work properly.

1. Reinsert the Wireless USB Adapter into your PC's USB slot. Right click My Computer and select Properties. Select the device manager and click on the Network Adapter. You will find the Adapter if it is installed successfully. If you see the yellow exclamation mark, the resources are conflicting. You will see the status of the Adapter. If there is a yellow question mark, please check the following:
2. Make sure that you have inserted the right adapter and installed the proper driver. If the Adapter does not function after attempting the above steps, remove the adapter and do the following:
3. Uninstall the driver software from your PC through Control Panel's "Add or Remove Programs".
4. Restart your PC and repeat the hardware and software installation as specified in this User Guide.

2. I cannot communicate with the other computers linked via Ethernet in the Infrastructure configuration.

1. Make sure that the PC to which the Adapter is associated is powered on.
2. Make sure that your Adapter is configured on the same channel and with the same security options as with the other computers in the Infrastructure configuration.

3. What should I do when the computer with the Adapter installed is unable to connect to the wireless network and/or the Internet?

1. Check that the LED indicators for the broadband modem are indicating normal activity. If not, there may be a problem with the broadband connection.
2. Check that the LED indicators on the wireless router are functioning properly. If not, check that the AC power and Ethernet cables are firmly connected.
3. Check that the IP address, subnet mask, gateway, and DNS settings are correctly entered for the network.
4. In Infrastructure mode, make sure the same Service Set Identifier (SSID) is specified on the settings for the wireless clients and access points.
5. In Ad-Hoc mode, both wireless clients will need to have the same SSID. Please note that it might be necessary to set up one client to establish a BSS (Basic Service Set) and wait briefly before setting up other clients. This prevents several clients from trying to establish a BSS at the same time, which can result in multiple singular BSSs being established, rather than a single BSS with multiple clients associated to it.
6. Check that the Network Connection for the wireless client is configured properly. If Security is enabled, make sure that the correct encryption keys are entered on

both the Adapter and the access point.

- 4. I can't find any wireless access point / wireless device in 'Site Survey' function.**
 1. Click 'Rescan' for few more times and see if you can find any wireless access point or wireless device.
 2. Please move closer to any known wireless access point.
 3. 'Ad hoc' function must be enabled for the wireless device you wish to establish a direct wireless link.
 4. Please adjust the position of network card (you may have to move your computer if you're using a notebook computer) and click 'Rescan' button for few more times. If you can find the wireless access point or wireless device you want to connect by doing this, try to move closer to the place where the wireless access point or wireless device is located.
- 5. Nothing happens when I click 'Open Config Utility'**
 1. Please make sure the wireless network card is inserted into your computer's USB port.
 2. Reboot the computer and try again.
 3. Remove the card and insert it into another USB port.
 4. Remove the driver and re-install.
 5. Contact the dealer of purchase for help.
- 6. I can not establish connection with a certain wireless access point**
 1. Click 'Add to Profile' for few more times.
 2. If the SSID of access point you wish to connect is hidden (nothing displayed in
 3. 'SSID' field in 'Site Survey' function), you have to input correct SSID of the access point you wish to connect. Please contact the owner of access point to ask for correct SSID.
 4. You have to input correct passphrase / security key to connect an access point with encryption. Please contact the owner of access point to ask for correct passphrase / security key.
 5. The access point you wish to connect only allows network cards with specific MAC address to establish connection. Please go to 'Status' menu and write the value of 'MAC Address' down, then present this value to the owner of access point so he / she can add the MAC address of your network card to his / her access point's list.
- 7. The network is slow / having problem when transferring large files**
 1. Move closer to the place where access point is located.
 2. There could be too much people using the same radio channel. Ask the owner of the access point to change the channel number.

Thank you for purchasing a quality Rosewill Product.

Please register your product at: www.rosewill.com for complete warranty information and future support for your product.

Free Manuals Download Website

<http://myh66.com>

<http://usermanuals.us>

<http://www.somanuals.com>

<http://www.4manuals.cc>

<http://www.manual-lib.com>

<http://www.404manual.com>

<http://www.luxmanual.com>

<http://aubethermostatmanual.com>

Golf course search by state

<http://golfingnear.com>

Email search by domain

<http://emailbydomain.com>

Auto manuals search

<http://auto.somanuals.com>

TV manuals search

<http://tv.somanuals.com>