

*Rosewill*<sup>®</sup>

**WEB CAM RCM-3201V**

user manual

---

# Index

Package Contents.....	1
System Requirements.....	2
The Description for Each Part.....	3
Web Cam Features.....	4
Web Cam Specifications.....	5
Using the Web Cam.....	6
Install the Hardware.....	7
Install the Software.....	8
Setting the Software.....	11
Uninstall the Software.....	17

# Package Contents

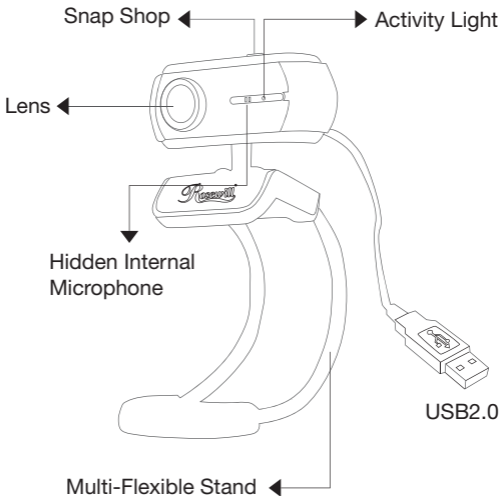
- Web Camera
- CD Driver - with Video & Frame Effect
- User's Manual



# System Requirements

- Windows XPSP2/VISTA Above
- Mac 10.4.8 above
- Pentium 4 or faster processor
- 128 MB RAM
- 200 MB free hard drive space
- 24 bit color display adapter
- Available 2.0 USB port

# The Description for Each Part



# Web Cam Features

## Multi-Flexible Stand



Any Flat Surface



For Notebook



For LCD Monitor



For CRT Monitor

## Multi-Swivel Design



360°



30°



90°

## Face Tracking



Face Tracking



2X



4X

**UVC** : USB Video Class, Plug & Play - Driver Free



# Web Cam Specifications

- Sensor Type: CMOS
- Native Resolution: 1280X1024 pixels
- Video Capture: Up to 1280X1024 pixels
- Still Image Capture: Up to 2560X2048 pixels  
(With CD Software)
- Frame Rate: Up to 30fps@640X480 pixels
- USB Protocol: USB 2.0 UVC
- Product Size: 60(L)X16(W)X23(H)mm  
(Body only)

# Using the Web Cam

## How to use the Web Cam

### ■ The web cam is UVC version- "Plug & Play"

#### Under Window Vista

It can use the preview function of Web Cam through "MSN", "SKYPE", "QQ" and "YAHOO" directly.

### ■ Under Window XP

#### ▶ For Testing & Snap Shop Function:

1. Click "My Computer"
2. Select "USB Video Device".

#### ▶ For Preview Function:

It can use the preview function of Web Cam through "MSN", "SKYPE", "QQ" and "YAHOO" directly.



# Install the Hardware

Connect the camera USB cable to the USB port.



# Install the Software

The driver of "Effect Software" will have extra bonus for "Video Effect" and "Frame Effect" Function.

Attention: Please install the Web Cam before the driver installation.

The Steps of installation:

Step 1. Please install the Web Cam first.

Step 2. Please install the driver after finishing the installation of Web Cam successfully.



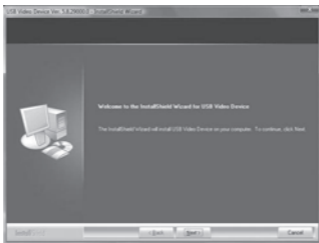
Steps 1.



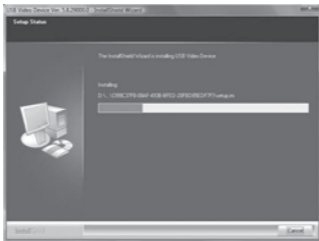
Steps 2.

# Install the Software

1. Click "Install" to begin the installation



2. Start installation

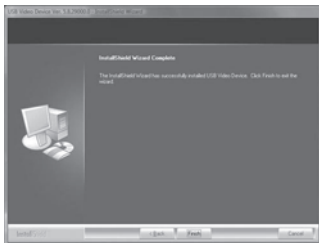


# Install the Software

## 3. Select “Continue Anyway”



## 4. Select “Finish”



# Setting the Software

## How to use **AMCAP** tool :

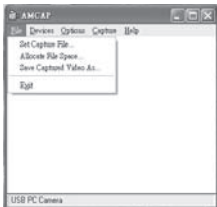
AMCAP is an application that let you capture video in your system.

It captures video into an .AVI file. Below is description of AMCAP's various options and features.

- **File/Set Capture File:** Where you save the captured file.
  
- **File/Allocate File Space:** Capturing will work better if you capture into an .AVI file that already exists on your local drive. Here you set how much space to reserve (how big your file needs to be).  
It also helps if you defragment your hard drive before beginning capture, and have capture file near the beginning of the physical drive.

## Setting the Software

- **File/Save Captured Video As :** Use this to copy the captured data to another file, so you can reuse the same preallocated file for your next capture.



- **Options/preview:** Lets you watch the input video that is being recorded in the application windows.
- **Device :** Under the devices menu you choose which of your video cameras you will be capturing from.



# Setting the Software

- Options/Video Capture Filter: Adjust various video setting, such as brightness, contrast, etc.



# Setting the Software

## Unique Video Effect

1. Particular Video Effect : There are 16 kinds of video effect for choosing.



Snipping



Embossment



Mosaic



Fisheye

2. Special Frame Effect : There are 10 kinds of frame effect for choosing.



Newspaper



Jungle



Postcard

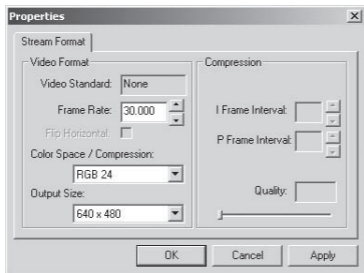


Computer



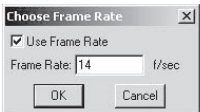
## Setting the Software

- Options/Video Capture Pin: Choose the video color space and video size. Supported color spaces are RGB24, 1420. Supported size is 160X120, 176X144, 320X240, 352X288, 640X480 and 1280X1024.

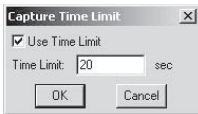


## Setting the Software

- Capture/Start Capture : Save the capture file in your computer and select "START" and then "OK" to start capture of video sequence or "Cancel" to cancel the capture.
- Capture/Set Frame Rate : Where you can set the frame rate you want for preview and video.



- Capture/Set Time Limit : Where you can set the time limit for video.



# Uninstall the Software

1. Click "Start" from the task bar and choose "Programs"
2. Select "USB Video Device" → "Uninstall" and follow the instructions.



Thank you for purchasing a quality Rosewill Product.  
Please register your product at : [www.rosewill.com/](http://www.rosewill.com/)  
for complete warranty information and future support for your product.

## Free Manuals Download Website

<http://myh66.com>

<http://usermanuals.us>

<http://www.somanuals.com>

<http://www.4manuals.cc>

<http://www.manual-lib.com>

<http://www.404manual.com>

<http://www.luxmanual.com>

<http://aubethermostatmanual.com>

Golf course search by state

<http://golfingnear.com>

Email search by domain

<http://emailbydomain.com>

Auto manuals search

<http://auto.somanuals.com>

TV manuals search

<http://tv.somanuals.com>