



**Elegant Webcam 2.0Mega Pixel Built-in MIC W/UVC
RCM-2655V
User Manual**

Contents

Introduction.....	2
System Requirements for Device.....	2
Package Contents.....	3
PC Camera Introduction.....	3
Set up PC Camera.....	4
Software Installation	
ArcSoft WebCam Companion 3.0.....	5
ArcSoft Magic-i.....	7
Snapshot by ArcSoft WebCam Companion 3.0.....	9
Camera Specification.....	10

Introduction

Welcome to the world of digital imaging. The following information will help you to use your camera to its full capabilities.

For viewing pictures or video, camera must be connected to your personal computer.

This camera is support Microsoft Video Class and plug & play directly without driver.

System Requirements for Device

- Pentium® P4 1.2G CPU
- Free USB2.0 port
- 256MB RAM internal memory minimum
- 500MB free hard disk space
- Internet connection
- CD-ROM drive
- Windows compatible sound card and speakers
- Windows® XP Service Pack II
- Windows Vista™ / Windows 7

Note:

1. **If your system is Windows XP Service Pack I, please go to www.microsoft.com . It's free to update your system to Windows XP Service Pack II.**
2. **System requirement required by webcam only.**
3. **Before using WCC3, please make sure you have Media Player V.9 or above.**

Package Contents



PC camera

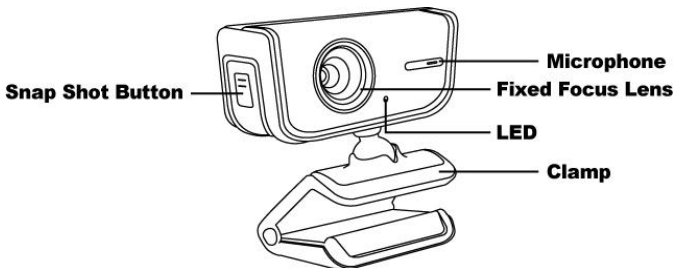


CD-disc



User Manual

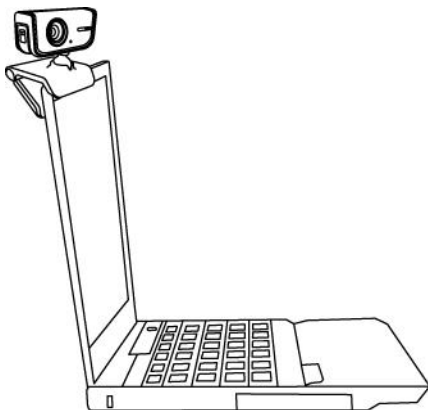
PC Camera Introduction



Set up PC camera

You may mount the PC camera to your laptop or stand on the desk.

Plug the PC camera into the USB port of PC or laptop properly.



Software Installation

ArcSoft WebCam Companion 3.0

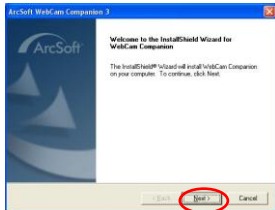
1. Turn on the computer and insert CD installation Disc into your CD-ROM drive. Select and click “ArcSoft WebCam Companion 3.0”



2. Choose Setup Language



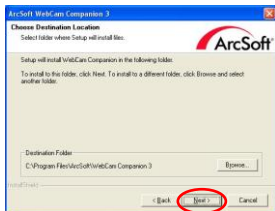
3. Click “Next”



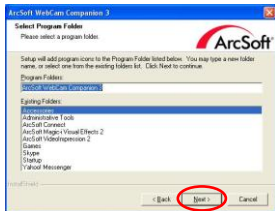
4. Click “Yes”



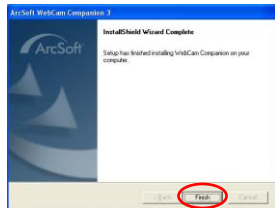
5. Click "Next"



6. Click "Next"



7. Click "Finish"



Software Installation

ArcSoft Magic-i

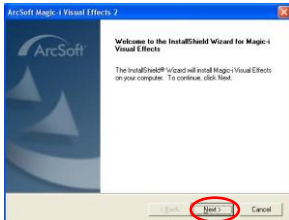
1. Turn on the computer and insert CD installation Disc into your CD-ROM drive. Select and click “ArcSoft Magic-i”



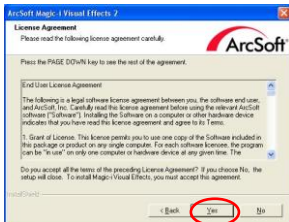
2. Choose Setup Language



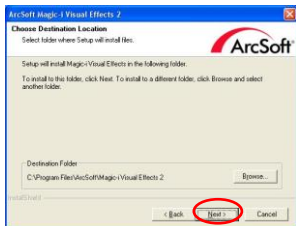
3. Click “Next”



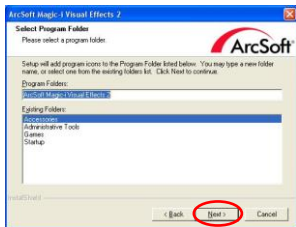
4. Click “Yes”



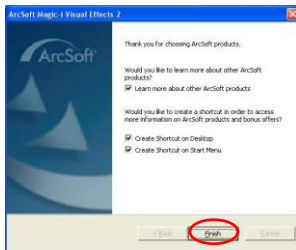
5. Click "Next"



6. Click "Next"



7. Click "Finish"



Snapshot by ArcSoft WebCam Companion 3.0

1. Click on the “WebCompanion 3.0” icon on the desktop.



2. Click “Capture”



3. Click “Capture” for capture image and the picture is saved.



4. Click “Record Video” for recording.



Note:

The Snapshot button and its featuring functions are not supported under Windows Vista and Win7. To access this function, please use the bundled software -ArcSoft Webcam Companion 3.0

Camera Specification

Image Sensor	1600x1200 pixels, CMOS
Lens Specification	F2.8, f=4.8mm, Fixed Focus Lens
White Balance	Auto
Exposure	Auto
Frame Rate	1600 x 1200 pixels @ 1~5fps 1280 x 960 pixels @ 5~9fps 800 x 600 pixels @ 15~20fps 640 x 480 pixels @ 25~30fps
Focus Range	Fixed focus, 30cm to infinity
Depth of Field	50cm to 100cm
PC Interface	USB2.0
Video Format	WMV
Audio	Built-in microphone
Video Capture Res.	640x480/ 352x288 pixels
System Requirements	Support Microsoft Video Class Win XP Service Pack II above Without driver
Snapshot	By software
Still Capture Res.	Up to 8M pixels (by WCC3 interpolation)
Power	From USB port
Bundled Software	ArcSoft WebCompanion 3.0 ArcSoft Magic-i

Specifications are subject to change without prior notice.

Thank you for purchasing a quality Rosewill Product.
Please register your product at : www.rosewill.com for complete warranty information and future support for your product.

This symbol on the product or in the instructions means that your electrical and electronic equipment should be disposed at the end of its life separately from your household waste. There are separate collection systems for recycling in the EU. For more information, please contact the local authority or your retailer where you purchased the product.



Free Manuals Download Website

<http://myh66.com>

<http://usermanuals.us>

<http://www.somanuals.com>

<http://www.4manuals.cc>

<http://www.manual-lib.com>

<http://www.404manual.com>

<http://www.luxmanual.com>

<http://aubethermostatmanual.com>

Golf course search by state

<http://golfingnear.com>

Email search by domain

<http://emailbydomain.com>

Auto manuals search

<http://auto.somanuals.com>

TV manuals search

<http://tv.somanuals.com>