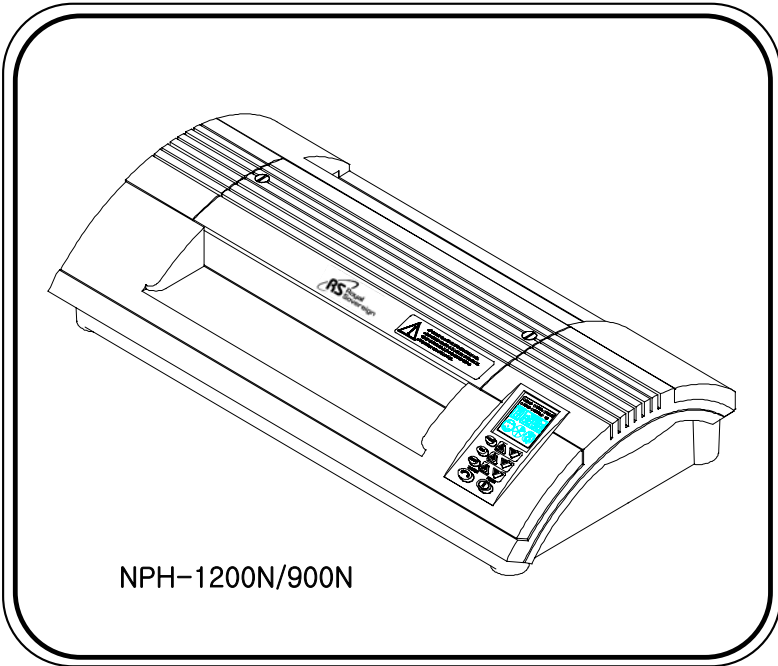




PROFESSIONAL PHOTO LAMINATOR OWNER'S MANUAL



PLEASE READ AND SAVE INSTRUCTIONS

ROYAL SOVEREIGN INTL.INC.

TABLE OF CONTENTS

TOPICS	PAGE
INTRODUCTION -----	3
SAFETY PRECAUTIONS -----	3
CHARACTERISTICS OF NPH-1200N/900N -----	4
SPECIFICATIONS -----	5
SETUP -----	5
MAJOR PARTS IDENTIFICATION -----	6
CONTROL PANEL INSTRUCTIONS -----	7
1.CONTROL PANEL SETTINGS -----	7
2.LCD WINDOW -----	8
3.BUTTON FUNCTIONS -----	9
4.HOW TO SET THE BUTTONS -----	10
*SET TEMPERATURE -----	10
*SPEED CONTROLS -----	10
*CHECK TEMPERATURE ON THE ROLLER -----	10
*MEMORY WORKING CONDITION AND USING THE MEMORY SETTING -----	11
*COLD MODE -----	11
LAMINATING STEPS -----	12
1.HOT LAMINATING -----	12
2.COLD LAMINATING -----	13
3.COLOR FOIL LAMINATING -----	14
4.MOUNT BOARD LAMINATING -----	15
HOW TO CLEAN ROLLERS AND REMOVE STUCK OR JAMMED FILMS -----	16
IMPORTANT SAFETY CONCERNS -----	17
MAINTENANCE -----	17
A/S PARTS -----	17
TROUBLE SHOOTING -----	17
ONE YEAR LIMITED COMMERCIAL/PROFESSIONAL WARRANTY -----	18

INTRODUCTION

Thank you for purchasing a Royal Sovereign Laminating Machine. To insure high quality lamination, please read this instruction manual thoroughly. For additional product support or factory-direct ordering information, call Royal Sovereign Customer Service at (201)568-0830 or toll free call, (800)397-1025.

SAFETY PRECAUTIONS

The safety recommendations outlined in this section are to be read, understood and followed before operating the machine.

Keep this information for future reference. Failure to comply with any of the following safety procedures could result in serious personal injuries

1. To prevent the possibility of electrical shock, do not immerse machine in water or permit liquids to get inside.
2. Do not allow articles of clothing (neckties, scarves, etc.) or papers near the front or rear of the machine while operating as they could get caught by the rollers and be pulled inside, causing personal injury.
3. Do not attempt to laminate that exceed total recommended material thickness.
4. Do not operate machine for any other purpose than its intended use.
5. Do not operate machine when electrical plug or power cord is damaged.
6. Turn off the power when not in use. Unplug machine before moving it or when it is not in use for an extended period of time.
7. This machine is indoor use only.
8. Do not alter the electric plug in any use.

CHARACTERISTICS OF LAMINATOR NPH-1200N/900N

This machine has been designed using the latest laminating technology.

1. This machine is controlled by a state-of-the-art Microprocessor.
 - a) Protect the rollers--When the power is off or a power failure occurs, rollers continue to turn until the unit properly cools down.
 - b) Automatic overheating protection--If a temperature sensor should fail, the heating elements will not heat up.
 - c) You can set your own operating conditions into "Memory".
2. Temperature and speed can be adjusted, to properly laminate various film thickness.
3. A buzzer rings, alerting you that a button has been pressed. This prevents accidental setting changes.
4. Roller cover may be opened for easy access to clean the rollers.
5. Thermostats are used to economically maintain consistent temperature.

SPECIFICATIONS

Description	NPH – 1200N	NPH – 900N
Dimensions(w x d x h)	580x290x135mm (22.8"x11.4"x5.3")	505x290x135mm (19.9"x11.4"x5.3")
Max.Laminating Width	330mm (13")	240mm (9.4")
Max.Lam. Thickness	2mm (1/12")	
Film Thickness	75 ~ 250mic (3 ~ 10 mil)	
Transport Type	Four Roller (no carrier)	
Heat Source	Hot Roller Type	
Pre-Heating Time	4 ~ 5 min	
Temp. Operating Range	20 ~ 160℃	
Cooling Fan Type	DC FAN	
Motor Type	DC GEARED MOTOR	
Max. Laminating Speed	750mm/min (29.5" per min)	
Weight	11Kg (24 lbs)	9Kg (20 lbs)
Voltage / Cycle	AC 120V/60Hz (AC230~240V ,50/60Hz)	
Power Consumption	1000W	850W

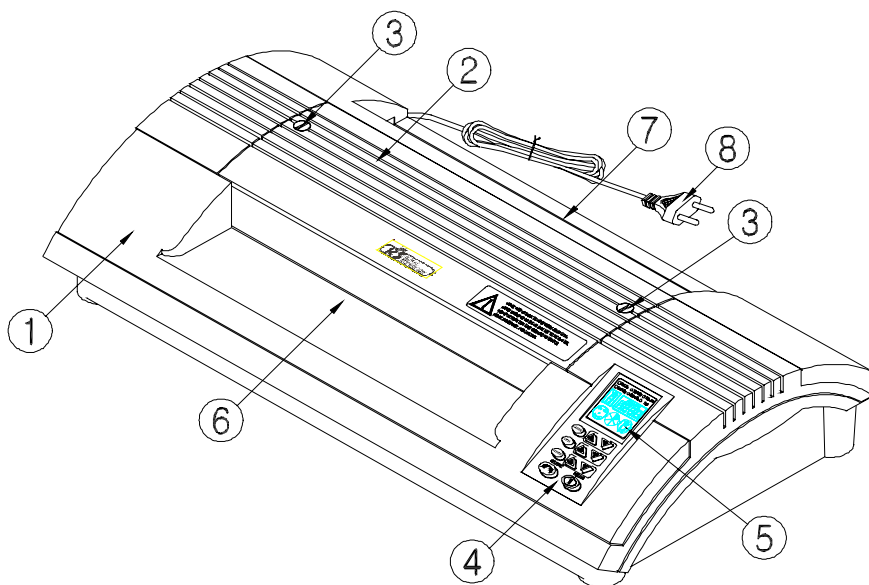
SETUP

Place laminator on a sturdy, flat work surface. Allow ample clearance behind laminator for laminated document or photograph to exit completely without bending.

Connect laminator to an electrical outlet that matches laminator's rated voltage and power requirements.

If an extension cord is required, use a cord rated higher than the laminator's capacity.

MAJOR PARTS IDENTIFICATION



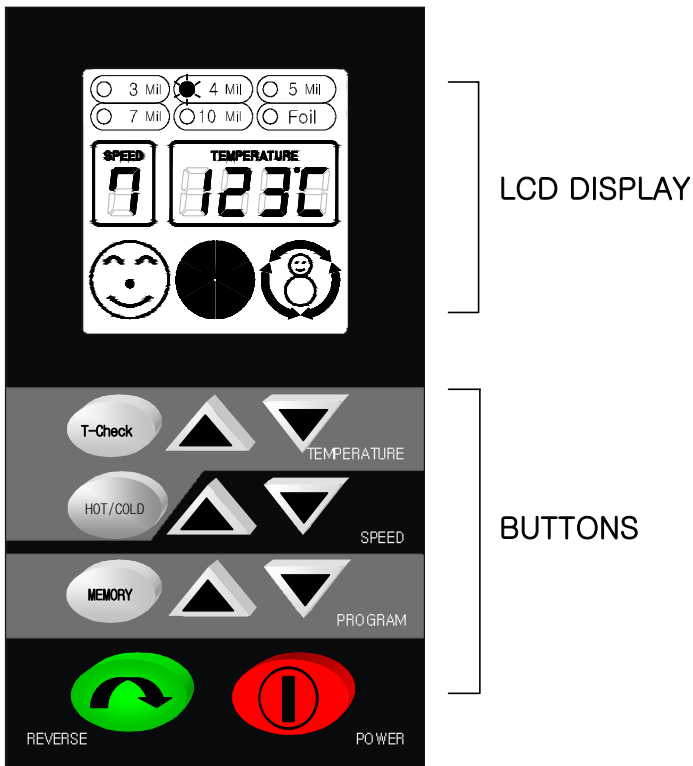
1. Top Cabinet
2. Roller Cover
3. Roller Cover Screws
4. Control Panel
5. LCD Window
6. Input
7. Output
8. Power Cord

CONTROL PANEL INSTRUCTIONS

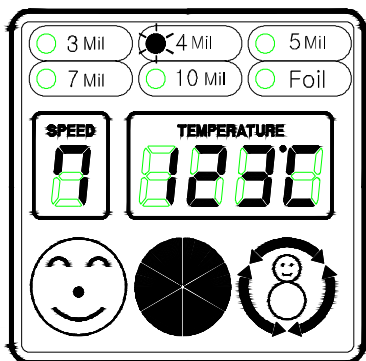
Appropriate speed and temperature may be set, using the LCD controller.

The LCD panel was designed for convenience, by incorporating the ability to program your settings into "Memory".

1. CONTROL PANEL SETTINGS



2. LCD WINDOW



-

* 6 film thickness options

75 Mic=3 mil, 100 Mic=4 mil, 125 Mic=5 mil

175 Mic=7 mil, 250 Mic=10 mil

2. SPEED

* 7 speed options

Setting 1 is slowest / Setting 7 is fastest

3. TEMPERATURE

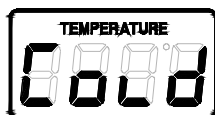
Display the present temperature.

- Is displayed when the present temperature is reached.

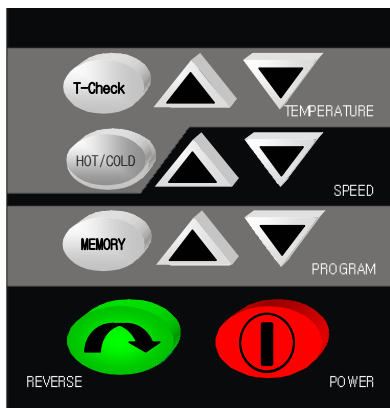
- Indicates to wait till blinking stops.
Current temperature is higher or lower than the preset temperature.


- Displays the direction of the rollers.

- Shows cold function.




3. BUTTON FUNCTIONS




 : Check current temperature

 : Hot/Cold function

 : Working condition and
Cold function cancel

 : Increase temperature
: Decrease temperature

 : Increase speed
: Decrease speed

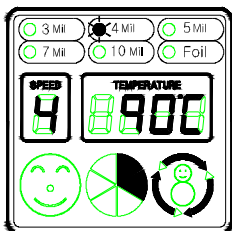
 : Restore the memorized
working setting
: Restore the memorized
working setting

 : Reverse function



 : Power On/Off

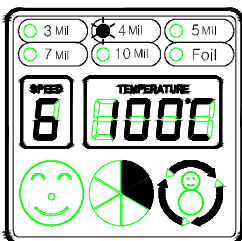
4. HOW TO SET THE BUTTONS

(Buzzer rings each time you press the button.)





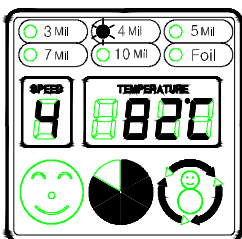
SET TEMPERATURE

1. Temperature available range from 20°C to 160°C.
2. Each time you press  or  to set temperature, it will change 1°C (1°F) at a time. If you press the button for more than 2 seconds, temperature will change automatically.




SPEED CONTROLS

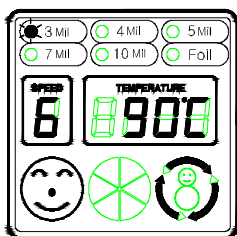
1. You can use 7 different lamination speed.
2. You can change speed with  or 



***CHECK TEMPERATURE ON THE ROLLER ***

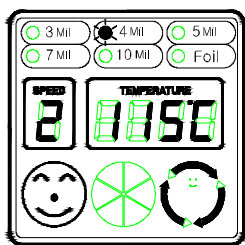
1. Press  button when check the current temperature.
2. The current temperature will blink on the display for a second and turns back to the setting mode.

MEMORIZING WORKING CONDITION AND USING THE MEMORIZED WORKING CONDITION



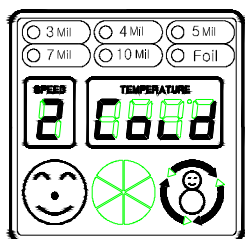
1) Memorizing working condition

1. The laminator can memorize up to 6 settings.
2. Use up and down arrows to set or .
3. When you complete the optimum laminating conditions (Speed & Temperature), button.
This setting is memorized and confirmed when the light blinks.
4. To enter other settings into memory, repeat steps 2 and 3.



2) Using the memorized settings

1. You can choose any one of 6 settings in memory.
2. Use the up and down arrows to select or a setting form memory.






COLD MODE


1. Press button. It will show a on the display.
2. The speed will always be shown "2" and there is no memory setting this function.
3. Speed can be varied 0 to 7 by selecting or button
4. You can release the machine from cold mode by pressing .


LAMINATING STEPS

1. HOT LAMINATING

1. Press the power button.
2. Please refer Information Panel on the front of product.
3. Select a memory setting by pressing the  and  button.
4. It is ready when the LCD window shows  and the buzzer rings three times.
5. After Insert document or photograph to be laminated into a laminating pouch, insert pouch squarely into opening slot.
6. Finished laminated pouch will exit through rear of machine.
7. Emerging laminated document is hot to touch. Please handle it to be cooled down.
(If document is not laminated well, do lamination again.)
8. When the machine is on for an extended period of time, use a slightly lower temperature setting as the internal temperature of the machine may actually be higher than the preset temperature, which may cause the document may ripple or bend.
9. When you are finished laminating, press the power button to turn off.

USEFUL INFORMATION

- * When continuously laminating, the ready signal () may disappear and the waiting signal may be displayed on LCD window.

At this time, if pouch is being laminated, finish laminating and then laminate new one after  is showed.

- * Do not laminate empty or thin pouch on a thick film setting.

The pouch could stick to the roller.

- * Do not unplug laminator while laminating.

This could be fatal for the rollers due to the high internal temperature.

2. COLD LAMINATING

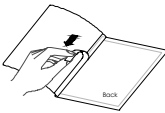
1. Press the power button to turn on.

2. Press .

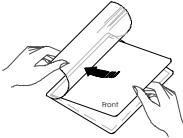
3. It is ready when LCD window  shows and the buzzer rings three times.

4. Insert document into a Royal Sovereign cold laminating pouch as follows.

HOW TO ATTACH DOCUMENT ON COLD POUCH FILM



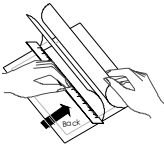
1) Prepare cold pouch film.



2) Remove protective paper inside cold pouch.
(Be careful not to allow the pouch to close and seal itself closed. If the pouch closes on itself and seals, you will not be able to the document to be laminated inside.)



3) Place document squarely into the pouch, where the protecting paper was.
Cold film's minimum border of about 3mm(1/8") is necessary to provide a proper edge seal.



4) Beware of dust while inserting document.

5) Feed pouch squarely into opening slot.

5. Finished laminated pouch will exit through rear of machine.

6. When you are finished laminating, press the power button to turn off.



USEFUL INFORMATION

If it has recently been used for hot lamination, allow the rollers to be cooled down about 20~30 minutes.

3. COLOR FOIL LAMINATING

Your laminator has ability to add color by applying color foil to documents copied or printed by laser printer or toner copier.

****PAPER CARRIER is required****

1. Press the power button to turn the laminator on.
2. Find FOIL FUNCTION using  the up arrow.
3. It is ready when LCD window shows  and the buzzer rings 3 times.
4. Position the color foil on document and put it in paper carrier.
5. Feed paper carrier squarely into opening slot.
6. Finished laminated paper will exit through rear of machine.
7. When you are finished laminating, press the power button to turn off.

*****USEFUL INFORMATION*****

* The document, which has been foil laminated, is pretty hot and easily bent. Try not to touch the document until it has cooled down.

* When you are applying foil to small areas or using several colors, use tape provided, to hold the foil in place.

(Foil laminating temperature is set for a bond paper.)

4. MOUNT BOARD LAMINATING

****You can laminate photographs or pictures on a hard mounting board up to 2mm thickness****

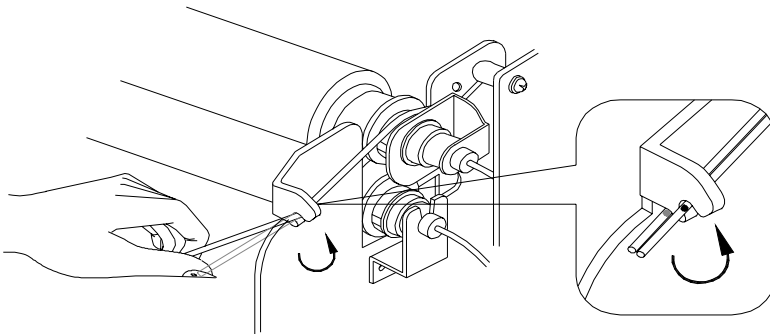
1. Press the power button to turn on.
2. Temperature 130 and speed 1 is set for Foil function.
3. It is ready when LCD window shows ☺ and the buzzer rings 3 times.
4. Set material on Mount board then slide them into the opening slot
5. Finished board will exit through the rear slot of machine.
6. When finish, press the power button and turn off.

USEFUL INFORMATION

- * The document, which has been mounting board laminated, is pretty hot and easily bent. Try not to touch the document until it has cooled down.
- * When laminating to mounting board 2mm, pressure adjustment is needed for good quality lamination.

LAMINATION PRESSURE ADJUSTMENT

1. Unscrew 6 retaining screws of bottom and lift off top cover.
2. Locate each end of left and right pressure spring and set in the upper position, as shown.



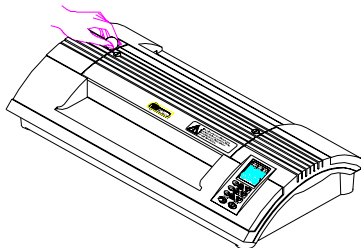
3. Reassemble top cover with retaining screws and do lamination.

***For general lamination, set pressure springs to lower position.**

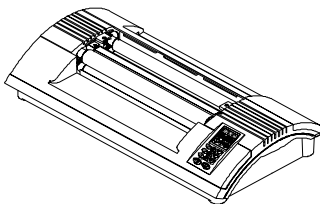
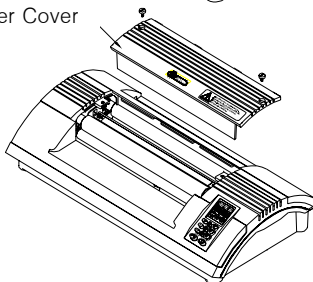
HOW TO CLEAN ROLLERS AND REMOVE STUCK OR JAMMED TO FILMS

1. Cleaning rollers with a clean and thick paper

- 1) If film adhesive appears on the laminated pouch surface, Insert a sheet of clean, thick paper (about 0.5mm(1/50") thickness) into the machine 2~3 times on 100°C(212°F) setting. The paper will attract the excess adhesive from the roller.



Roller Cover



2. Cleaning rollers with cleaning solvent.

- 1) When rollers are hot, turn on and set "COLD" mode to cool them down.
- 2) After cooling, the machine automatically stops.
- 3) Unscrew 2 retaining screws on the cover by using a screw driver or a coin. Turn them towards counterclockwise. After remove them, lift off the cover.
- 4) Use a recommended silicon roller cleaning solvent such as Laminex Poly-Off or equivalent, on a lint-free cloth to clean residue of laminate adhesive on exposed roller surface.
You can clean every corner of the rollers as turn the power switch and make them roll
Prevent any liquid from spilling into the unit.
- 5) Re-assemble the unit in reverse-order of disassembling.

* Do not turn the unit on until the rollers are completely dry. Wet rollers could cause serious harm.

IMPORTANT SAFETY CONCERNS

1. Please be cautious that neckties, necklaces, long hair and clothing are kept well away while operating the laminator.
2. Prevent children from accessing the machine.
3. Make certain that the machine is connected to an adequate power source.
4. Do not use for any purpose other than lamination.

MAINTENANCE

1. Width of upper and lower side of film should be same in order not to allow melted adhesive resin to stick to the rollers.
2. Routine cleaning of rollers is required to prevent adhesive build-up
3. Always keep the area around the machine clean.
To remove dust, finger prints, etc. from housing, use diluted alcohol on lint-free cloth and do not permit liquids to get into laminator. (Do not use strong alcohol or petroleum-based cleaning solvents or abrasives.)

ASSEMBLY PARTS

1. Owner's manual : 1
2. Roller cleaning paper : (A3) 3 pcs

TROUBLE SHOOTING

Symptom	Cause	Check point
* Motor doesn't work.	. Power cord may not be plugged in.	. Check the power cord.
	. Power switch is OFF	. Check that the switch is on.
* Film is not laminated.	. Cold mode may be set.	. Change the function to hot lamination
* Result of lamination is not clear.	. Temperature on the roller is too low or laminating is too fast.	. Increase temperature or decrease speed.

ONE YEAR LIMITED COMMERCIAL/PROFESSIONAL WARRANTY

This product is warranted for 1 year from date of purchase to be free from electrical or mechanical defects in material and workmanship. Should product fail to operate during warranty period, return it, freight prepaid, to Royal Sovereign Corporation, 100 West Sheffield Avenue, Englewood, NJ 07631, for service. There will be no charge for parts and labor to repair or replace this product within warranty period. When returning machine, purchaser must include a photo copy of purchase receipt and a check or money order for \$20.00 to cover return shipping and handling. Please include a brief note explaining the problem.

This warranty is voided in cases of improper use, abuse, mishandling and unauthorized modifications or repairs. This warranty does not cover suitability of this product for specific applications. Determining suitability of each application is solely the responsibility of the user. This warranty does not cover incidental or consequential damages resulting from its use.

This warranty is not to be considered a service contract, and does not cover routine adjustment, cleaning, jams or removal of materials that have become stuck inside machine.

This warranty does not cover damage or injury resulting from improper use or failure to follow the instruction manual provided. In no event will manufacturer, importer, warranty service center, its agents or assigns, be liable for losses, either direct or indirect, including but not limited to special, incidental, consequential, or punitive damages whatsoever incurred arising out of any breach of warranty by manufacturer, importer, warranty service center, their heirs or assigns or successors in interest. Purchaser hereby accepts and agrees to these conditions by returning the registration card to the warranty service center. There are no other warranties either expressed or implied other than this written limited warranty. This warranty gives you specific legal rights, and you may also have other rights which vary from state to state. Warranty registration card must be mailed within ten days of purchase.

WARNING: Please read all safety warnings and instructions before using this product. Improper use or failure to read and follow instructions may cause a fire, the unit to overheat, or serious personal injury.

Free Manuals Download Website

<http://myh66.com>

<http://usermanuals.us>

<http://www.somanuals.com>

<http://www.4manuals.cc>

<http://www.manual-lib.com>

<http://www.404manual.com>

<http://www.luxmanual.com>

<http://aubethermostatmanual.com>

Golf course search by state

<http://golfingnear.com>

Email search by domain

<http://emailbydomain.com>

Auto manuals search

<http://auto.somanuals.com>

TV manuals search

<http://tv.somanuals.com>