

15097 Digital Camera

Owner's Manual



© 2006 Sakar International, Inc. All rights reserved.
Windows and the Windows logo are registered trademarks of Microsoft Corporation.
All other trademarks are the property of their respective companies.

Table of Contents

Key Features	3
What your camera includes:	3
Computer System Requirements	4
A Quick Look at Your Camera	4
Preparing Your Camera for Use	5
Starting Your Camera	6
The Camera Modes	6
Installing Girl Gear Photo Manager Software	9
Software & Camera Driver Installation	9
Downloading Photos	14
Everything you need to get the most of your photos and MORE	17
WebCam Express – capturing AVI files	18
Viewing Videos	20
Maintenance of Your Digital Camera	21
Technical Support	21
Appendix A: Technical Specifications	22
Appendix B: Troubleshooting	23

Introduction

Thank you for purchasing a 15097 digital camera. This camera can be used as a web cam (camera to use to chat over the Internet) and as a digital camera. To download photos to your computer, you need only connect the USB cable from your computer to your camera. Girl Gear Photo Manager software lets you edit your photos to share with friends and family. Everything you need to take quality digital photos is included with your camera. Please read this manual carefully FIRST in order to get the most out of your digital camera. Note: In order to speak with your friends over the Internet, you will need a PC headset and microphone. Any standard PC headset will operate with this digital camera and is available at your local computer retailer.

Key Features

- WebCam
- 2 camera resolutions - 640 x 480 Pixels (VGA), 352 x 288 Pixels (CIF)
- 4 x 16 Megabytes Built-in SDRAM Memory
- Girl Gear Photo Manager software for managing and enhancing your photos, printing, sending photos by e-mails and much more

What your camera includes:

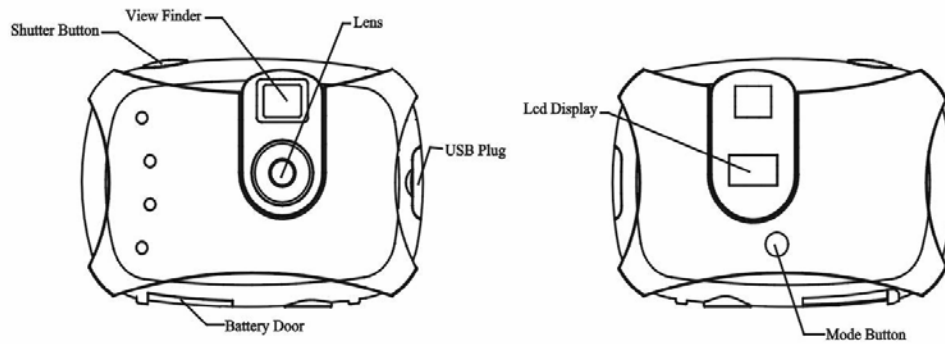
- Digital Camera With 3 faceplates
- Girl Gear Photo Manager and driver software installation CD
- USB cable
- Strap
- User's Manual

Computer System Requirements

To be able to download photos to your PC you will need the following minimum configuration:

- Pentium processor or above with MS Windows 98 SE, 2000, ME, XP
- 32 MB RAM, 80 MB free disk space
- Available USB Interface
- CD-ROM Drive
- Color display (16 bit or higher recommended)

A Quick Look at Your Camera



- 4 -

Preparing Your Camera for Use

Battery Installation

Your camera requires two AAA batteries. Insert the batteries into the camera:

1. Slide the cover of the battery compartment open.
2. Insert batteries according to the polarities (+ and -) indicated on the inside of the battery cover.
3. Close battery compartment.

WARNING: Opening the battery compartment and/or removing the battery will erase the photos currently stored in the camera. Download your photos as often as possible. Photos may be lost when the batteries run low.

The LCD will flash when your batteries are running low, you will need to replace your camera's batteries, please download any photos you have on the camera before opening the battery compartment. When the battery voltage drops to 2.2V the LCD will display "Lo" and the camera will turn off automatically.

Note: If you do not intend to use your camera for an extended period, remove the batteries to avoid battery leakage and corrosion.

Starting Your Camera

Press the mode button to start the camera. The camera will sound a beep to confirm that your camera is on and ready for use.

Taking Photos

Compose your shot using the view finder.

Hold the camera steady and press the shutter button to take photo. The camera will beep when a photo is taken. The number of photos taken is displayed on the LCD screen.

If you attempt to take a photo when the memory is full the camera will beep continuously.

The Camera Modes

Photo Resolution

There are 2 photo resolutions to select from, Hr (VGA = 300k resolution) or Lr (CIF =100k resolution)

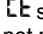
1. Press the mode button to select "Hr" or "Lr" shown on the LCD display.
2. If the LCD displays "Hr" this means that the present resolution is "Lr" and in order to change to "Hr", click on the shutter button within 5 seconds.
3. If the LCD displays "Lr" this means that the present resolution is "Hr" and in order to change to "Lr", click on the shutter button within 5 seconds.
4. All photos taken after changing resolution will be at the new resolution.

The photo resolution settings determine the number the number of photos and the amount of memory

required for each photo. The following table tells you how many photos can be taken based on the image resolution and light conditions:

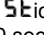
Resolution	Indoors	Outdoors
Hr (VGA)	About 55 photos	About 32 photos
Lr (CIF)	About 256 photos	About 117 photos

Continuous Shoot Mode

1. Press the mode button to select  shown on the LCD display.
2. Press the shutter button and do not release the shutter button until you wish to stop shooting. The camera will beep once for each photo taken until the shutter button is released or the camera's memory is full. Continuous photo shooting may fail under poor lighting conditions.


Self-Timer

You can include yourself in a photo by using this feature to delay the time between your pressing the shutter and when the photo is actually taken. It is recommended that you use a tripod when you use the self timer.

1. Press the mode button to select the  icon shown on the LCD screen.
2. Press the shutter button to start a 10 second count down (the LCD will flash once a second). After 10 seconds a photo is taken.

Delete (Last Photo)


To delete the last photo taken:

1. Press the mode button to select the  icon shown on the LCD screen.

2. Press the shutter button, the photo counter will flash.
3. Press the shutter button again within 5 seconds. The LCD counter will now display one less photo than before.

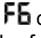
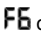
Delete All

To delete the last photo taken:

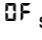
1. Press the mode button to select the  icon shown on the LCD screen.
2. Press the shutter button, the photo counter will flash.
3. Press the shutter button again within 5 seconds. All photos in the camera will be deleted and the LCD counter will be reset to 00.

Frequency:

Using the incorrect frequency setting under fluorescent lighting could result in poor images or video flickering (when using the WebCam). Set the camera for the correct frequency for the country that you are in. Your camera has 2 Frequency settings, 50HZ for the U.S. and Asia and 60HZ for Europe and Japan. The default setting is 50Hz.

1. Press the mode button to select the  or  icon shown on the LCD screen.
2. Press the shutter button to change the frequency setting.

Power Off

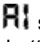
1. Press the mode button to select  shown on the LCD screen.
2. Press the shutter button and the camera will switch off.

Energy save mode:

In order to conserve battery power, if the camera is not used within 30 seconds, the camera will automatically switch off.

Video Mode: 

To take video clips (AVI format):

1. Press the mode button to select  shown on the LCD screen.
2. Press and hold down the shutter button until you want to stop shooting or until the memory is full. While the camera is shooting the LCD screen will display a rotating-line icon.

Installing Girl Gear Photo Manager Software

Before attempting to install the software, make sure that you do not have the camera or the USB cable attached to your computer. This may cause your installation to fail. Do not connect the cable to the computer until the entire installation process has been completed. We suggest you follow the step by step instructions that will appear on your screen during the installation process.

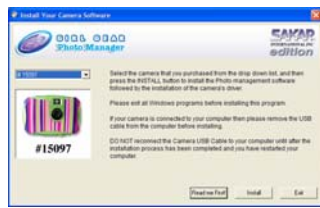
Software & Camera Driver Installation

1. Insert the CD into your CD-Rom drive. Make sure that your camera is not connected to the computer.

2. For WIN 2000 or WIN XP operating systems - On the **"Install your camera software"** screen, select your camera model from the drop down list and click the "Install" button to install Girl Gear Photo Manager followed by the installation of PhoTags WebCam Express and your camera driver.

For WIN 98SE operating system- On the **"Install your camera software"** screen and follow these instructions:

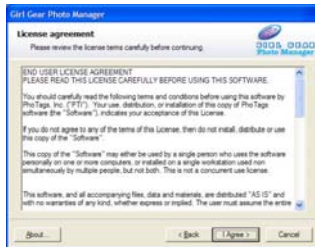
1. Click the "DirectX" button and follow the installation instructions, restart your computer after the installation
2. Insert the CD into your CD-Rom drive. Make sure that your camera is not connected to the computer.
3. On the "Install your camera software" screen, select your camera model from the drop down list and click the "Install" button to install Girl Gear Photo Manager followed by the installation of PhoTags WebCam Express.



1. On the "Girl Gear Photo Manager" screen, click the "Next" button.



2. Please review the license terms and click the "Agree" button to continue.



3. Let the "Girl Gear Photo Manager" installer create the folder where the program will be installed to, and then click **"Install"**.



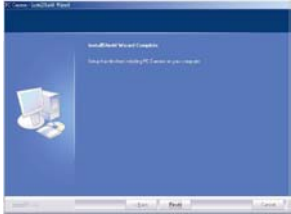
4. Click **"Finish"** to let the "Girl Gear Photo Manager" installer finish the installation program.



5. This will automatically launch the Install shield for the camera driver. Click "**Next**" to continue.



6. Once the program has finished installing you will have to restart your computer.



7. Congratulations!! You have successfully installed the "Girl Gear Photo Manager" software, the "PhoTags WebCam Express" and the Camera driver.

Downloading Photos

Use the “Girl Gear Photo Manager” program to import photos and video clips (AVI files) from your camera.

1. Plug one end of the USB cable into the USB slot on your camera.
2. Plug the other end of the USB cable into a USB port on your computer.
3. Make sure that your camera is connected and turned on.
4. Double-click the “**Girl Gear Photo Manager**” icon that is on your desktop to launch the “Girl Gear Photo Manager”



5. Click on the “**Get Photos**” button on the Main Menu.



6. The **"Get photos"** wizard will appear with the correct name of your camera device selected in the "Active devices" list in the "Express" mode. Click the **"Next"** button to proceed.



7. On the next screen, choose where you want to place your photos and video clips and click the "Finish" button to copy the photos to your computer.



8. All of the pictures you imported will then appear in the **"Select photos"** mode's main window.



Everything you need to get the most of your photos and MORE

Download photos instantly from your digital camera, media cards, CDs and storage devices to your computer.

Manage your photos by creating countless unique photo collections without duplicating any photos. Burn CDs of any folders for backup and storage.

Enhance your photos; Auto Enhance, Crop and Correct Red Eye.

Add Active Captions- add Text Captions, Frames, Shapes, Keywords... and more that can be viewed or hidden any time.

Locate and Organize your photos and collections- Search by Captions, Category, Keyword or Date - directly from the operating system of your computer.

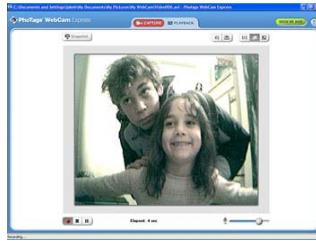
Share your photos via E-mail, Local Printing and Create HTML web pages for uploading online.

Create Calendars, two-sided Greeting Cards and Postcards on standard photo paper... Create Photo Albums and Slide Shows on CDs that can be viewed on your PC and VCD's for viewing on your TV using your DVD player.

WebCam "sees".



2. To add audio to your video, plug a microphone into your computer.



3. Click the "**Capture**" button to start recording the video. The recording elapse time will appear under the video.



4. Click the "**Pause**" button to hold the recording. To continue recording click the "**Capture**" button again.
5. To finish recording click the "**Stop**" button.
6. The videos will be automatically saved into a default directory. You can view them in the "Playback" window.



Note:

1. To take snapshots: to learn how to capture JPEG snapshots from your WebCam or from your existing AVI movies, go to the "Take Snapshots" section in the Quick Start help.
2. To learn how to change the user settings, go to the "Set User Preferences" section in the Quick Start help.

Viewing Videos

To view a video clip double click on a video file, this will open Windows Media Player.

Maintenance of Your Digital Camera

Your camera is a delicate instrument - please handle it with care.

Technical Support

For technical support issues please visit our website at www.sakarhelp.com. You can find manuals, software and FAQ's at the website. Can't find what you are looking for? Fill out an online ticket and one of our technical support team members will answer questions or call 877-397-8200 or 732-476-5098 to access our technical support information on the phone. For question on warranty information please email warranty@sakar.com

Appendix A: Technical Specifications

Image Sensor	CMOS Sensor 300k pixels
Resolution	640X480 (VGA); 352X288 (CIF)
Memory	4X16M bytes SDRAM
Number of pictures	Hr about 32 VGA; Lr about 117 CIF
Lens	Fixed Lens: f=7.2mm/F2.4
Focus Range	40 cm to infinity
Shutter speed Range	1/6~ 1/16000 second
Status LCD display	Numeric LCD
Self-Timer	Timer with 10 sec. delay
Video mode	24 bits (R/G/B)
Video frame rate	10 fps (Hr). 30fps(Lr)
Expose/ white balance	Auto/Auto
Power source	2X1.5V AAA alkaline / USB 5V
Auto power off	30 sec.
PC interface	USB 1.1
Operation system	Windows 98 SE/2000/Me/XP
weight	Approx. 66g (without 2 AAA batteries)
Dimension	63(H) X 92(L) X 22(T) mm

Appendix B: Troubleshooting

Q: I have taken photos, but my computer says "No photos in camera." What do I do?

First, ensure that you have taken photos with your camera. Press the shutter button a few times to take some sample photos and try again. If you still get a no photos error, this indicates that the software was not installed correctly or you may not meet the minimum system requirements.

System Requirements:

At least a Pentium II 300 MHz, AMD Athlon 300 MHz, or a Celeron 400 MHz or higher, at least 64 MB of RAM. Please note that the older AMD K6 processors will not work. More information about determining your computer's specifications can be found in the General Computer Information section. If you have determined that you have pictures in your camera and you meet the system requirements, follow the steps below to reinstall the software.

Software Re-installation:

1. First install the software. Click on Start, Settings, Control Panel and Add/Remove programs. You will need to remove Girl Gear Photo Manager. After removing it, restart your computer. If your camera is connected, disconnect it.
2. Now reinstall the software. Insert the CD that came with your camera. It should automatically run the installation.
3. Restart the computer.
4. Once your computer is back up, plug the camera into your computer's USB port.
5. Right-click on the "My Computer" icon. Select Properties.
If you are running Windows ME: Click on Device Manager.
If you are running Windows 2000 or XP: Click on hardware and then Device Manager.

If the camera is installed correctly, there will be a category listed for "Imaging Devices" and clicking on the "+" next to it should reveal your camera. If not, you will likely see "Digital Still Camera" under "Other Devices" with a brightly colored marking next to it indicating it is not functioning correctly.

If you are running Windows ME: Right click on the non functioning device and select Remove.

If you are running Windows 2000 or XP: Right click on the non functioning device and select uninstall. If a warning pops up, press OK.

6. Restart your computer again. Your camera is now successfully installed.

Q: How do I make sure I don't lose important pictures?

Your camera uses flash memory which requires a constant electric current to store your photos. Should your camera lose power (for instance if the battery dies or is removed) all stored pictures will be lost. We recommend always downloading your photos to your computer as soon as possible to prevent unintentional data loss.

Free Manuals Download Website

<http://myh66.com>

<http://usermanuals.us>

<http://www.somanuals.com>

<http://www.4manuals.cc>

<http://www.manual-lib.com>

<http://www.404manual.com>

<http://www.luxmanual.com>

<http://aubethermostatmanual.com>

Golf course search by state

<http://golfingnear.com>

Email search by domain

<http://emailbydomain.com>

Auto manuals search

<http://auto.somanuals.com>

TV manuals search

<http://tv.somanuals.com>