

23070 / 23072 Digital Camera

Owner's Manual



SAKAR
INTERNATIONAL INC.

© 2007 Sakar International, Inc. All rights reserved.

© 2007 Crayola

Windows and the Windows logo are registered trademarks of Microsoft Corporation.

All other trademarks are the property of their respective companies.

Table of Contents

Introduction.....	3
What your camera includes:	3
Computer System Requirements	3
A Quick Look at Your Camera.....	4
Preparing Your Camera for Use	5
Starting Your Camera.....	6
The Camera Modes.....	8
Installing Color Genie Software	10
To Uninstall Color Genie Software	11
Installing Digital Camera Driver	12
Downloading Photos	13
Web Cam Function.....	16
Camera Maintenance	20
Technical Support	20
Sakar Warranty Card.....	20
Appendix A: Technical Specifications.....	21
Appendix B: Troubleshooting	22

Introduction

Thank you for purchasing your Crayola camera. Please read this manual carefully FIRST in order to get the most out of your digital camera. Parental supervision is recommended for children under 10.

What your camera includes:

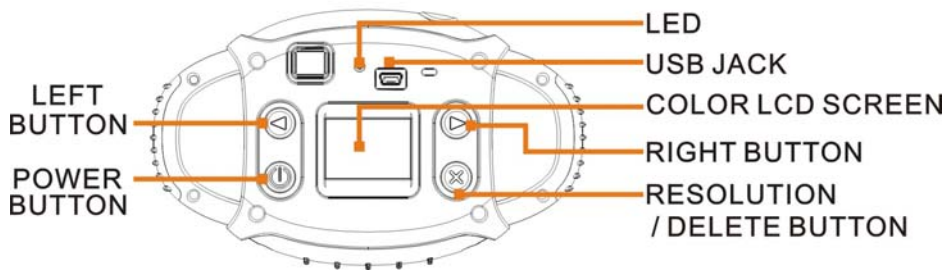
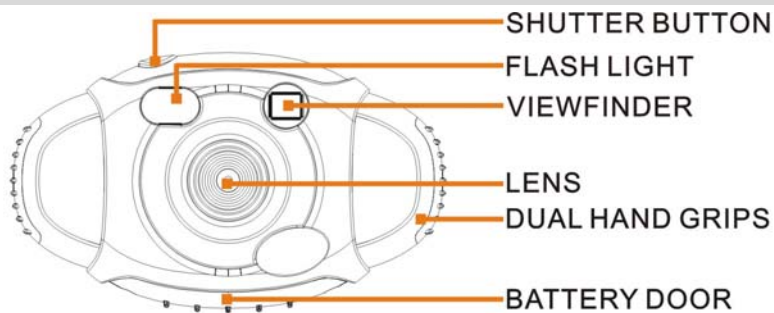
- Crayola Camera
- Photo Editing Software and driver installation CD
- USB cable
- User's Manual
- Necklace Strap

Computer System Requirements

To be able to download photos to your PC you will need the following minimum configuration:

- Windows 2000/XP
- Pentium-based PC (or equivalent)
- 200 MB hard disk free space and 128 MB or more RAM
- Available USB Interface
- CD-ROM Drive
- Color display (16 bit or higher recommended)
- Screen resolution 1024 X 768

A Quick Look at Your Camera

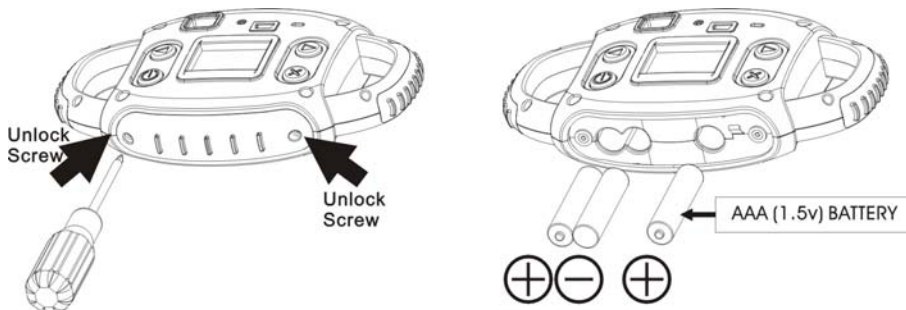


Preparing Your Camera for Use

Battery Installation

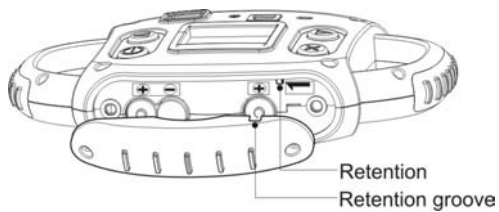
Your camera requires three AAA alkaline batteries, which must be inserted as follows:

- Using a screwdriver, open the battery compartment at the bottom of the camera.
- Insert the batteries in accordance with the polarity (+/-) shown in the battery compartment.
- Close the battery compartment and replace screws tightly.



The LCD screen will flash if your batteries are running low. You will need to replace the camera's batteries before taking photos. Download your photos as often as possible. Photos may be lost when the batteries run low.

Tips: Insert the battery correctly and close the battery compartment as following diagram and descriptions:




Fix retention groove to the retention inside the battery compartment.

Note: If you do not intend to use your camera for an extended period, remove the batteries to avoid leakage and corrosion.

WARNING:

Please download any photos you have on the camera before opening the battery compartment. Opening the battery compartment and/or removing the battery will erase the photos currently stored in the camera.

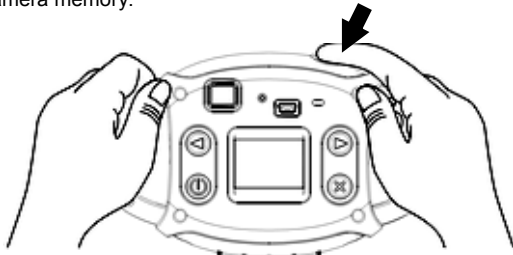
Starting Your Camera

Press the **POWER**  button to start the camera. (Refer to diagram above). The camera will sound a musical tone to confirm that it is ready for use.

Taking Photos

1. Compose your shot using the viewfinder. (The optimal distance between the camera and the subject is approximately 5 feet.)
2. Hold the camera steady and press the **SHUTTER** button to take a photo.
3. Once the photo is taken, the number of photos remaining in the camera memory will be displayed on the screen. Each consecutive photo taken will reduce this number by one.

If the photo number fails to reduce, or if "000" appears on the screen, this is an indication that the memory is full. No further photos can be taken until the existing photos have been downloaded and cleared from the camera memory.



Note: The screen display indicates how many photos may still be taken

The Camera Modes


Preview Mode


This is the default mode for this camera, from which you can compose and take your photos with auto flash light. This mode also enables you to change the camera's resolution selection.

Taking Photos

You can frame your shot precisely by using the color LCD monitor or the viewfinder. Hold the dual hand grips steady and press the shutter button to take photos.

Resolution Selection

Press the **RESOLUTION**  button once and the camera will give you an option to change resolution.

Press the **RESOLUTION**  button again within 3 seconds to confirm your resolution selection. If you do not want to change the resolution wait 3 seconds without hitting any buttons. ★=QVGA RESOLUTION; ★★=VGA RESOLUTION.

Flash

This camera comes equipped with a built-in flash, it will automatically turn on when necessary. There are no buttons to press to setup the flash.

Note:

The term **VGA**, (Video Graphics Array), refers to a photo taken with a resolution of 640×480 pixels. **VGA Mode** allows you take 24 photos with the camera memory. **QVGA**, (Quarter VGA), refers to a photo taken with a resolution of 320 x 240 pixels. **QVGA Mode** allows you take 93 photos with the camera memory.

Playback Mode

Formatted

This mode enables you to look through the photos stored on your camera using the screen.

Press the ◀ **LEFT** or **RIGHT** ▶ button to enter the Playback mode.

The mode has two options:

1. Browse forward through your photos:

Repeatedly press the **RIGHT** ▶ button to scroll through your photos one by one in the order they were taken. You can also delete photos in this mode one by one by pressing the **DELETE** ✕ button. When the photo you wish to delete appears on the screen, press the **DELETE** ✕ button once and a sound will be heard along with a delete icon on your LCD screen. Press the **DELETE** ✕ button a second time to confirm, and the camera will delete the photo on the screen.

2. Browse backward through your photos:

Repeatedly press the **LEFT** ◀ button to scroll through your photos one by one in reverse order to that in which they were taken. You can also delete photos in this mode one by one by pressing the **DELETE** ✕ button. With the photo you wish to delete showing on the LCD screen, press the **DELETE** ✕ button once and you will hear a sound and you will see a delete icon on your LCD screen. Press the **DELETE** ✕ button a second time to confirm, and the camera will delete the photo on the screen.

Power Off

Press and hold the **POWER** ⏻ button (holding it down for 3 seconds) to switch off the camera.

Energy Save Mode:

To conserve battery power, if the camera is not used for 30 seconds, it will automatically switch off.

Installing Color Genie Software

Insert the CD-ROM into your CD-ROM drive.

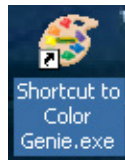
If Auto-play is turned on, the installation screen will open automatically after inserting the CD-ROM into your CD-ROM drive.

Click "**Install Color Genie Software**".



Installation will begin and will not complete until you read the message "*Installation complete*". To open the newly installed Color Genie program, you must first exit the installation screen by clicking the **Exit** button. On

your desktop a shortcut called, "*Shortcut to Color Genie.exe*", will appear. Double-click the icon to open and run the program. Have fun!



If the installation screen does not pop up, AutoPlay may be turned off. If Auto-play is turned off, go to the **Start** menu and select **Run...**, use the **Browse...** button to select your CD-ROM drive, click on "*Install.exe*". This will launch the installation screen.

To Uninstall Color Genie Software

Insert the CD-ROM into your CD-ROM drive. If Auto-play is turned off, go to the **Start** menu and select **Run...**, use the **Browse...** button to select your CD-ROM drive, click on "*Install.exe*". This will launch the installation screen.

If Auto-play is turned on, the installation screen will open automatically after inserting the CD-ROM into your CD-ROM drive.

Click "**Uninstall Color Genie Software**" - the uninstall process will begin. The process will complete when the message "*Uninstall complete*" appears.

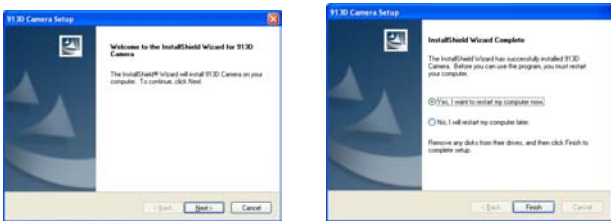


Installing Digital Camera Driver

Click "Install Digital Camera".



Click "Next" to continue the installation. Once the camera driver has finished installing you have to restart your computer.



You have successfully installed the Camera driver.

Downloading Photos

After the camera driver has been successfully installed, you can start downloading your photos from the camera onto your computer for further use in the Color Genie program. Here's how you download your photos from your Crayola camera:

1. Connect your camera to your computer using the supplied USB cable. (Be sure to wait until the camera is recognized by your computer.)
2. Locate the 913D Camera folder on your desktop and open it by double-clicking it.
3. Open the 913D Camera application by double-clicking it.
4. To see the photos that are currently on your camera click the **DOWNLOAD** button (the little red camera icon at the bottom) if you have any photos on your camera they will start loading in the little preview areas one at a time.



5. Select the photos you want to download onto your desktop and click **SAVE PHOTOS** button. Or if you want to download all photos, click the **SELECT ALL** button and then click the **SAVE PHOTOS** button. After clicking the **SAVE PHOTOS** button a system window will pop up and ask you where you want to save them.
6. Create and name a new folder at a location of your choice and save them there.
7. The photos are then copied from the camera into your newly created folder. Now your photos can be imported into the Color Genie program. For further assistance on how to import photos into the Color Genie program refer to the appropriate help section on the enclosed Color Genie CD-ROM.
8. Disconnect the camera and close the 913D Camera application.

Getting started

The first thing you'll need to do is add photos to the program. Click the **ADD PHOTOS** button on the top menu to select photos to import (if you need additional help adding photos, see the "Adding Photos" help topic). Now you can view and print your photos in the photo center, edit them in the edit center, play a game using the photos, or create a great storybook!

Adding photos

To add photos to the program, first click the **ADD PHOTOS** button. Next, to import a single photo from your hard drive, click the **IMPORT SINGLE PHOTO** button. Use the dialog box to locate your photo, then click **OK**. If you want to import an entire folder of photos, click the **IMPORT FOLDER OF PHOTOS** button, then select the folder containing the photos from your hard drive and click **OK**. After photos are imported, they are stored according to the name of the folder they came from. To view your imported photos, select the folder name using the drop down box in the lower left-hand corner. Because the program does not make copies of your photos, if you rename, move or delete the original photos from your hard drive, they will no longer appear in the program.

Viewing and Selecting photos

To select a photo, simply click on the thumbnail. Once selected, you can edit, print, export or remove the photo from the program. To deselect a photo, re-click the photo or select a different photo. To select a different folder of photos, select the folder name using the drop down box in the lower left-hand corner. You can view your photos in three sizes. With smaller thumbnails, you can view more photos at one time. With bigger thumbnails,

you'll be able to see the fine detail of your photos. Click the large green buttons in the lower right hand corner of the photo center to display your photos in large, medium or small format. The yellow button shows the current view. If your active folder contains more photos than you can view on the screen at one time, use the up and down arrows to page through all the photos.

Slide show

To view a slideshow, select a folder of photos using the folder dropdown box. Next, click the SLIDE SHOW button. All the photos in the folder will automatically display in full screen mode. To end the slide show, click the screen.

Editing a photo

To edit one of your photos, first select a photo thumbnail by clicking it. Click the edit button when it becomes active. This will take your photo to the edit center and make it ready for painting, cropping and adding special effects.

Printing

To print a photo:

1. Select a photo thumbnail from the photo center.
2. Click PRINT. A print pop-up box will appear.
3. Select Portrait or Landscape mode.
4. Select FULL, 4x6, or 3x5 formatting for your print. If you choose FULL, use the slider bar to custom size your print.
5. Click PRINT.

Exporting

To export a photo to a file you can save or e-mail:

1. Select a photo
2. Click the EXPORT button. An Export pop-up box will appear.
3. Enter a name for the export file.
4. Select a file type (.jpg or .pdf).

5. Choose a location on your computer where the file will be saved.
6. Use the slider to adjust the size of the exported file.
(If you intend to e-mail the photo, a 1 MB maximum is recommended.)
7. Click EXPORT.

Removing photos

To delete a photo from the program, select a photo.

Then click the REMOVE button. If you just want to remove just the selected photo, click the REMOVE SELECTED button. If you want to remove ALL the photos in the currently selected folder, click the REMOVE ENTIRE FOLDER button. To cancel the deletion, click CANCEL.



NOTE: When you remove a photo, it will only remove the photo from the program. This program does not delete original photos!

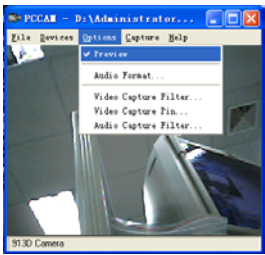
***For additional information on Color Genie software please see the "Help" section within Color Genie CD-Rom**

Web Cam Function

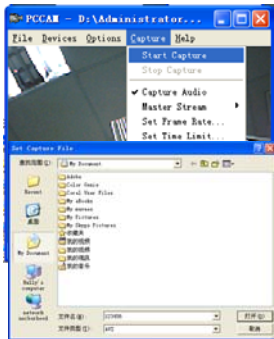
Note: Please make sure you have installed the camera driver before use this function.

1. Record AVI files with 913D software

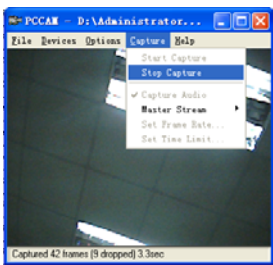
1. Connect your camera to computer with USB cable correctly.
2. Double click **913D Camera**  folder on desktop.
3. Double click **PC Cam**  icon to execute the file.
4. Select **Preview** in **Options** menu to show the preview images on your PC.



5. Select **"Start Capture"** in **Capture** menu to start record AVI file and locate a folder where you want to store the file.



6. To stop the AVI record, select **"Stop Capture"** in Capture menu.

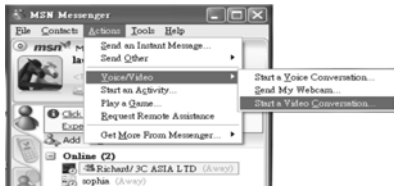


7 · After recording finish, you can play the AVI file with Media Player.

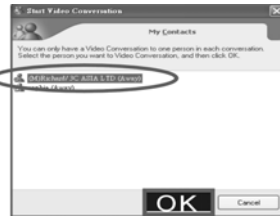
2. Chat with MSN

Your Digital camera can be used as a Web camera when you are chatting with your friends with MSN

1. Run and sign in the MSN software on your computer.
2. Connect the camera to your computer with USB cable correctly.



3. On the main interface of MSN, you select **[Actions]Voice/Video] [Start a Video Conversation]** in sequence.



4. Select the person who you want to chat and then press "OK".



5. Press "Next" to continue.



6. To receive the voice from the person who you want to chat, you can select speaker and adjust speaker volume of your computer, (not included) and then press "Next" to continue.



7. To send voice to the person who you want to chat, you can select Microphone and adjust Microphone volume of your computer (not included), and then press "Next" to continue.

8. Press "Finish" to finish setting.
Now, you can chat with your friends with webcam.

Camera Maintenance

Your Crayola camera is has been rubberized for durability, but it is not a toy - please handle it with care.

Technical Support

For technical support issues please visit our website at www.sakarhelp.com. There you will find manuals, software and answers to Frequently Asked Questions. Can't find what you are looking for? Fill out an online ticket and our technical support team will answer your questions. You can also call us toll free at (877) 397-8200 to access our technical support information on the phone.

Sakar Warranty Card

This warranty covers products that fail to function properly UNDER NORMAL USAGE, due to defects in material or workmanship. Warranty protects the original consumer purchaser only and is not transferable. Your product will be repaired at no charge for parts and/or labor for a period of one year from date of purchase.

What Is Not Covered By Warranty:

1. Damages or malfunctions not resulting from defects in material or workmanship. 2. Damages or malfunctions from other than normal use, including but not limited to, repair by unauthorized parties, tampering, modification or accident.

What To Do When Service Is Required:

When returning your defective product (postage pre-paid) for service, your package should include:

1. Copy of **original** bill of sale
2. A detailed written description of the problem.
3. Your return address and telephone number (Daytime)

MAIL TO ADDRESS BELOW:
Sakar International
Attention: Service Department
195 Carter Drive
Edison, NJ 08817
Tel: 732-248-1306

You may also visit www.sakar.com for further assistance if necessary or call our tech support department toll free at (877) 397-8200

Appendix A: Technical Specifications

Image Sensor	CMOS Sensor
Panel	CSTN (Color screen)
Image Resolution	VGA (640x480 pixels) and QVGA (320x240 pixels)
Memory	8MB Built-in SD RAM memory
Number of pictures	VGA: 24 Photos, QVGA: 93 photos
Power source	3 x AAA (1.5V) alkaline batteries
Auto power off	30 sec.
PC interface	USB 1.1
Operating Systems	Windows 2000 or XP

Appendix B: Troubleshooting

Q: I have taken photos, but my computer says "No photos in camera." What do I do?

First, ensure that you have taken photos with your camera. Press the shutter button a few times to take some sample photos and try again. If you still get a no photos error, this indicates that the camera driver was not installed correctly or you may not meet the minimum system requirements.

System Requirements:

Pentium II 300 MHz, AMD Athalon 300 MHz, or a Celeron 400 MHz processor or higher, with at least 128 MB of RAM. Please note that older AMD K6 processors will not work. If you have determined that you have pictures in your camera and you meet the system requirements, follow the steps below to reinstall the camera driver.

Camera Driver Re-installation:

1. Uninstall the camera driver. Click on the Start menu, select Settings, Control Panel and Add/Remove programs. You will need to remove your 913D camera driver. After removing it, restart your computer. If your camera is connected, disconnect it.
2. Reinstall the camera driver. Insert the CD-ROM that came with your camera. On the installation screen click on "Install Digital Camera Driver" and follow the Install Shield Wizard instruction.
3. Restart your computer.
4. Once your computer is back up, plug the camera into your computer's USB port.
5. Right-click on the "My Computer" icon. Select Properties.
Click on hardware and then Device Manager.

If the camera driver is installed correctly, there will be a category listed for "Imaging Devices" and clicking on the "+" next to it should reveal your camera. If not, you will likely see "Digital Still Camera" under "Other Devices" with a brightly colored marking next to it indicating it is not functioning correctly.

Right click on the non-functioning device and select uninstall. If a warning pops up, press OK.

6. Restart your computer again. Your camera driver is now successfully installed.

Q: How do I make sure I don't lose important pictures?

Your camera uses flash memory which requires a constant electric current to store your photos. Should your camera lose power (for instance if the battery dies or is removed) all stored pictures will be lost. We recommend always downloading your photos to your computer as soon as possible to prevent unintentional data loss.

Q: I have a MAC, will this camera work?

Unfortunately, the system requirements for our cameras require a Windows operating system. There is no Mac driver available.

This device complies with the part 15 of the FCC rules. Operation is subject to the following two conditions:(1) this device may not cause harmful interference , and (2) this device must accept any interference received, including interference that may cause undesired operation.

Caution: changes or modifications not expressly approved by the party responsible for compliance could void the user's authority to operate the equipment.

NOTE: This equipment has been tested and found to comply with the limits for a Class B digital device, pursuant to Part 15 of the FCC Rules, These limits are designed to provide reasonable protection against harmful interference in a residential installation. This equipment generates. Uses and can radiate radio frequency energy and, if not installed and used in accordance with instructions. may cause harmful interference to radio or -television reception, which can be determined by turning the equipment off and on, the user is encouraged to try to correct the interference by one or more of the following measures:

- Reorient or relocate the receiving antenna.
- Increase the separation between the equipment and receiver.
- Connect the equipment into an outlet on a circuit different from that to which the receiver is connected.
- Consult the dealer or experienced radio/ TV technician for help.

Free Manuals Download Website

<http://myh66.com>

<http://usermanuals.us>

<http://www.somanuals.com>

<http://www.4manuals.cc>

<http://www.manual-lib.com>

<http://www.404manual.com>

<http://www.luxmanual.com>

<http://aubethermostatmanual.com>

Golf course search by state

<http://golfingnear.com>

Email search by domain

<http://emailbydomain.com>

Auto manuals search

<http://auto.somanuals.com>

TV manuals search

<http://tv.somanuals.com>