

27290 Digital Camera

Owner's Manual



© 2007 Sakar International, Inc. All rights reserved.
Windows and the Windows logo are registered trademarks of Microsoft Corporation.
All other trademarks are the property of their respective companies.

Table of Contents

What Your Camera Includes	1
Computer System Requirements	1
A Quick Look at Your Camera	2
Preparing Your Camera for Use.....	2
Starting Your Camera.....	2
How to Use Your Camera	2
Installing Kids Cam Sticker Factory Software.....	4
Software & Camera Driver Installation.....	4
Downloading Photos and Videos	5
About Kids Cam Sticker Factory	6
Capturing (AVI) Video Using WebCam Express.....	7
Camera Maintenance	7
Technical Support.....	8
Sakar Warranty Card.....	8
Appendix A: Technical Specifications	8
Appendix B: Troubleshooting.....	8

Introduction

Thank you for purchasing your 27290 digital camera. Please read this manual carefully FIRST in order to get the most out of your digital camera.

What Your Camera Includes

- Digital Camera
- Kids Cam Sticker Factory software and camera driver installation CD
- USB cable
- Owner's Manual
- Strap

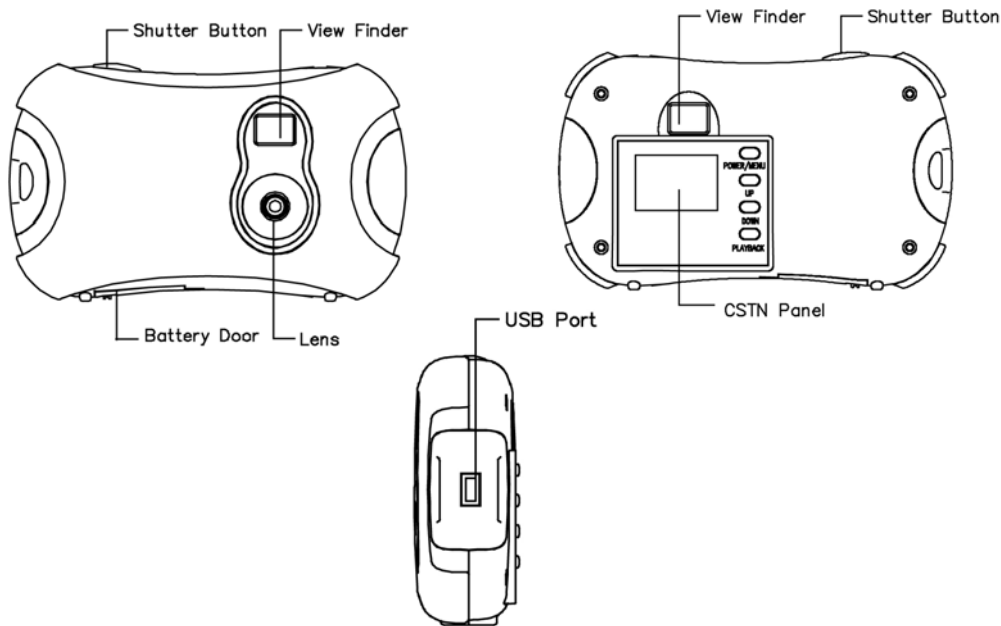
Computer System Requirements

To be able to download photos to your PC you will need the following minimum configuration:

- Windows 2000/XP
- Pentium-based PC (or equivalent)
- 200 MB hard disk free space and 128 MB or more RAM
- Available USB Interface
- CD-ROM Drive

- Color display (16 bit or higher recommended)
- Screen resolution 1024 X 768

A Quick Look at Your Camera



Preparing Your Camera for Use

Battery Installation

Your camera requires two AAA alkaline batteries, which must be inserted as follows:

1. Open the battery compartment at the bottom of the camera.
2. Insert the batteries in accordance with the polarity (+/-) shown on the inside of the cover.
3. Close the battery compartment.

The LCD will display the message "Low Battery" if the batteries are running low in which case you will need to replace the batteries before operating the camera.

Note: If you do not intend to use your camera for an extended period, remove the batteries to avoid leakage and corrosion.

Warning:

- Please download any photos and videos you have on the camera before opening the battery compartment.
- Opening the battery compartment and/or removing the batteries will erase the files currently stored on the camera.
- Download your photos videos as often as possible. They may be lost when batteries run low.

Starting Your Camera

Press the Power/Menu button to start the camera. The camera will sound a beep to confirm that it is ready for use. (To turn off the camera, press and hold down the Power/Menu button for 2 seconds.)

How to Use Your Camera

Preview Mode

This is the default mode for the camera, from which you can compose and take your photos and video clips (AVI) as well.


Taking Photos

1. Compose your shot using the viewfinder. (The optimal distance between the camera and the subject is approximately 5 feet.)
2. Hold the camera steady and press the Shutter button to take a photo.
3. The camera will beep when a photo is taken.

If the camera beeps twice continuously and "Memory is Full" appears on the LCD it means no further photos can be taken until the existing photos have been downloaded and cleared from the camera memory.


Note: After a photo is taken the LCD will display for a short time the number of photos that can still be taken.

Self-Timer

Press the Menu button once to enter the menu. Then press the Shutter button till the icon  shows up onto the LCD display.


Press the Menu button again to exit the menu. Now the camera is ready to take a photo after a 10-second count down. Press the Shutter button to start the count down with a sound of beep every second. Then 10 seconds later a photo will be taken automatically.

Taking Videos

Press the Menu button once to enter the menu. Then press the Shutter button till the icon  shows up onto the LCD display.

Press the Menu button again to exit the menu, and press the Shutter button to start/stop shooting. During taking a video, the recording elapsed time will be shown in bottom left of the LCD display.

Taking 3 Continuous Shots


Press the Menu button once to enter the menu. Then press the Shutter button till the icon  shows up onto the LCD display.

Press the Menu button again to exit the menu, and press the shutter button to start to take 3 continuous shots. The updated number of photos that can still be taken displays on the LCD for a short time.

Playback Mode

This mode enables you to review the files (JPEG/AVI) stored on your camera using the LCD screen). Press the Playback button to enter the Playback mode.

The LCD shows the photo or the image of the video file which has just been taken, with the sequence number and the total number of files currently stored shown in bottom left of the LCD display. User may press the Up and Down buttons to go to the last or the next file.


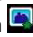
If the icon  is shown in top left of the LCD, this means the current file is a video clip (AVI). Press the Shutter button to play and press it again to pause. When playing the video file, the recording elapsed time will be shown in bottom left of the LCD display.

Press the Playback button again to exit Playback mode.

Photo Resolution and Compression



Resolution Selection

There are two photo resolutions to select from, high resolution-VGA(640x480) and low resolution-QVGA(320x240). The default setting for the camera is VGA(640x480).

Press the Menu button once to enter the menu. Then press the Up or Down buttons to select the resolution setting icon. Now the icon is shown as  which means the current resolution setting is VGA(640x480), to change to another resolution QVGA(320x240) press the Shutter button till the icon  comes up. Then press the Menu button to exit.

Compression Selection



There are two photo compressions to select from, high density and low density. The default setting for the camera is low density.

Press the Menu button once to enter the menu. Then press the Up or Down buttons to select the compression setting icon. Now the icon is shown as  which means the current compression is low density, to change to high density press the Shutter button till the icon  comes up. Then press the Menu button to exit.

Resolutions	Compressions	
VGA	Low density	26 photos
VGA	High density	79 photos
QVGA	Low density	106 photos
QVGA	High density	319 photos


Frequency Setting

The camera has 2 Frequency settings, 60Hz and 50Hz. Set the camera for the correct frequency according to the current frequency in the area where you are:

1. Press the Menu button once to enter the menu. Use the Up and Down keys to select the frequency setting icon. Now the icon is  which means the current frequency setting is 60Hz.
2. To change to 50Hz, press the Shutter button till the icon  shows up. Press the Menu button to exit.

Deletion

Delete All

Press the Menu button once to enter the menu. Use the Up and Down buttons to select the Delete All icon . Press the Shutter button once, use the Up or Down keys to select "Yes", and then press the Shutter button again to confirm deletion. This will erase all files stored on the camera.

Delete A Single File

Press the Playback button once to enter the Playback mode. Use the Up and Down buttons to select the file to be deleted. Then press the Menu button once, use the Up or Down keys to select "Yes", and then press the Shutter button to confirm deleting the file currently displayed.

Power Off

Press the Power/Menu button (holding it down for 2 seconds) to switch off the camera.

Energy Save Mode:

To conserve battery power, if the camera is not used for 60 seconds, it will automatically switch off.

Installing Kids Cam Sticker Factory Software

Before attempting to install the software, make sure that you do not have the camera or the USB cable attached to your computer. This may cause your installation to fail. Do not connect the cable to the computer until the entire installation process has been completed.

We suggest you follow the step by step instructions that will appear on your screen during the installation process.

Software & Camera Driver Installation

1. Insert the CD into your CD-ROM drive. Make sure that your camera is not connected to the computer.
2. On the "Install Your Camera Software" screen, select your camera model from the drop down list and click the "Install" button to install Kids Cam Sticker Factory followed by the installation of PhoTags WebCam Express and your camera driver.



3. On the "Kids Cam Sticker Factory" screen, click the "Next" button.



4. Please review the license terms and click the "I Agree" button to continue.



5. Let the "Kids Cam Sticker Factory" installer create the folder where the program will be installed, and then click "Install".



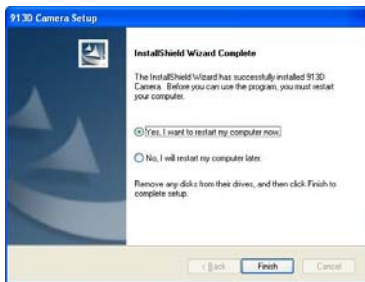
6. Click **“Finish”** to let the “Kids Cam Sticker Factory” installer finish the installation program.



7. This will automatically launch the Install shield for the camera driver. Click **“Next”** to continue.



8. Once the camera driver has finished installing you will have to restart your computer.



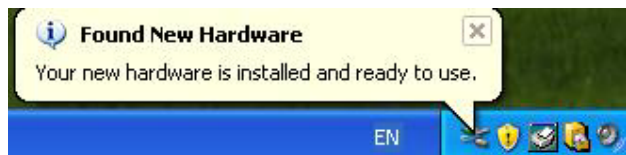
9. Congratulations!! You have successfully installed the “Kids Cam Sticker Factory” software, the “PhoTags WebCam Express” and the Camera driver.

Downloading Photos and Videos

Use the “Kids Cam Sticker Factory” program to import photos and videos from your camera.

1. Plug one end of the USB cable into the USB slot on your camera.
2. Plug the other end of the USB cable into a USB port on your computer.
3. Your camera will automatically be turned on.
4. Be sure to wait until the camera is recognized by your computer.

Important: For WinXP users - Do not open the software until you see the “Your new hardware is installed and ready to use” pop-up box on the toolbar. If you do not see this message after you have plugged in your camera please wait until it appears, otherwise the camera will not function properly.



Opening the software before this process is complete will cause the camera not to be recognized by the computer.

- Double-click the "Kids Cam Sticker Factory" icon that is on your desktop to launch the "Kids Cam Sticker Factory" program.



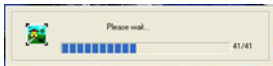
- Click on the "Get Photos" button on the Main Menu.



- The "Get photos from camera" window will appear.
- The files will be placed by default in the C:\My Documents\My Pictures folder. To select another location click the "Browse" button and then select a folder you wish to place your photos and videos.
- Click the "OK" button to proceed.



- A download photos progress bar will appear.



The photos and videos on your camera will be downloaded and copied to the folder you selected on your computer.

- Click the "Select Photos" button on the Main Menu screen. The folder that you selected will be opened with the photos appearing in the View thumbnails screen.

About Kids Cam Sticker Factory

Kids Cam Sticker Factory will help you get the most of the camera you just purchased. Packed with powerful, yet easy to use features, "Sticker Factory" will let you manage, enhance, turn your photos into Active Images and share your photos with friends and family.

Sticker factory is packed with fun things to do with your photos including:

Stickers Creator - create multiple stickers and print your own customized stickers with pictures, text and clip art on them.

Sticker Book Creator - write and print your own sticker books. The sticker book offers a variety of 10 templates/ themes to select for your book. You can also print 10 different "Fun stickers" with a variety of themes.

Slide Show - select any one of your photo collections and view them as full screen slide shows. You can even add background music that will play during the slide show.

Games - play any one of the five fun games including: Word Search, Jigsaw Puzzle, Sliding Puzzle, Mechanical Maze and Word Scramble.

CD/DVD Label Creator Workshop - design and print your own customized CD and DVD labels complete with pictures and text.

Select any two Workshop projects for FREE

Choose from:

- Calendar Creator
- Albums Maker

- Photo frames
- Greeting cards
- Postcards

You can purchase and activate all 3 additional workshop projects online at anytime.

How to purchase additional “Workshop” projects

1. To purchase the “Workshop Project” simply click the one you want and you will be referred to an online website where you can purchase them.
2. Once you purchase the “Workshop projects” they will be automatically activated in the software.

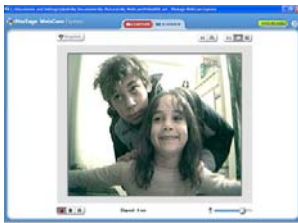
Capturing (AVI) Video Using WebCam Express

Now that you have your camera installed you can use it to capture short movies called AVI files. The length of time you can record an AVI while the camera is connected to your computer will vary, depending on how much hard drive space you will use to save the file. Please take note that these AVI files take up a lot of hard drive space. This is done through the PhoTags WebCam Express program. This next section will walk you through capturing an AVI file.

1. Double-click the “**WebCam Express**” icon that is on your desktop to launch the “**PhoTags WebCam Express**” program. Adjust your WebCam to the desired position. The screen will display what the WebCam “sees”.



2. To add audio to your video, plug a microphone into your computer.



3. Click the “**Capture**” button to start recording the video. The elapsed recording time will appear under the video.



4. Click the “**Pause**” button to pause recording. To continue recording click the “**Capture**” button again.
5. To finish recording click the “**Stop**” button.
6. Videos will automatically be saved in a default directory. You can view them in the “Playback” window.



Note:

1. Taking snapshots: to learn how to capture JPEG snapshots from your WebCam or from your existing AVI movies, go to the “Take Snapshots” section in the Quick Start help.
2. To learn how to change the user settings, go to the “Set User Preferences” section in the Quick Start help.

Camera Maintenance

Your camera is a delicate instrument - please handle it with care.

Technical Support

For technical support issues please visit our website at www.sakarhelp.com. You can find manuals, software and FAQ's at the website. Can't find what you are looking for? Fill out an online ticket and one of our technical support team members will answer questions or call 877-397-8200 or 732-476-5098 to access our technical support information on the phone. For any question on warranty information please email warranty@sakar.com

Sakar Warranty Card

This warranty covers for the original consumer purchaser only and is not transferable. Products that fail to function properly UNDER NORMAL USAGE, due to defects in material or workmanship. Your product will be repaired at no charge for parts or labor for a period of one year.

What Is Not Covered By Warranty:

Damages or malfunctions not resulting from defects in material or workmanship and damages or malfunctions from other than normal use, including but limited to, repair by unauthorized parties, tampering, modification or accident.

What To Do When Service Is Required:

When returning your defective product (postage pre-paid) for service, your package should include:

Copy of **original** bill of sale

A detailed written description of the problem.

Your return address and telephone number (Daytime)

MAIL TO ADDRESS BELOW:

Sakar International

Attention: Service Department

195 Carter Drive

Edison, NJ 08817

Tel: 732-248-1306

You may also visit www.sakar.com for further assistance if necessary or call our tech support department toll free at (877) 397-8200

Appendix A: Technical Specifications

Image Sensor	300K pixels CMOS Sensor
Resolution	640 x 480 (VGA), 320 X 240 (QVGA)
Memory	4M x 16Bit SDRAM
Number of pictures	High resolution(VGA), low density: 26 photos; High resolution(VGA), high density: 79 photos; Low resolution(QVGA), low density: 106 photos; Low resolution(QVGA), high density: 319 photos.
Lens	f=4.9mm/F2.8
Focus Range	1m to Infinity
Shutter Range	3/2 ~1/2400 second
Status LCD display	1.1" CSTN
Power source	2 x 1.5V AAA alkaline / USB 5V
Auto power off	60 sec.
PC interface	USB 1.1
Operating Systems	Windows 2000/XP
Weight	Approx. 59g (without 2 AAA batteries)
Dimensions	62(H) x 102(L) x 24(T) mm
File Format	JPEG/AVI
Exposure / White Balance	Auto /Auto

Appendix B: Troubleshooting

Q: I have taken photos, but my computer says "No photos in camera." What do I do?

- First, ensure that you have taken photos with your camera. Press the shutter button a few times to take some sample photos and try again. If you still get a no photos error, this indicates that the software was not installed correctly or you may not meet the minimum system requirements.
- System Requirements:
At least a Pentium II 300 MHz, AMD Athlon 300 MHz, or a Celeron 400 MHz or higher, at least 128 MB of RAM. Please note that the older AMD K6 processors will not work. More information about determining your computer's specifications can be found in the General Computer Information section. If you have determined that you have pictures in your camera and you meet the system requirements, follow the steps below to reinstall the software.
- Software Re-installation:
 1. First install the software. Click on Start, Settings, Control Panel and Add/Remove programs. You will need to remove PhoTags Express. After removing it, restart your computer. If your camera is connected, disconnect it.
 2. Now reinstall the software. Insert the CD that came with your camera. It should automatically run the installation.
 3. Restart the computer.
 4. Once your computer is back up, plug the camera into your computer's USB port.
 5. Right-click on the "My Computer" icon. Select Properties.
If you are running Windows 2000 or XP: Click on hardware and then Device Manager.

If the camera is installed correctly, there will be a category listed for "Imaging Devices" and clicking on the "+" next to it should reveal your camera. If not, you will likely see "Digital Still Camera" under "Other Devices" with a brightly colored marking next to it indicating it is not functioning correctly.

If you are running Windows 2000 or XP: Right click on the non functioning device and select uninstall. If a warning pops up, press OK.

6. Restart your computer again. Your camera is now successfully installed.

Q: How do I make sure I don't lose important pictures?

- Your camera uses flash memory which requires a constant electric current to store your photos. Should your camera lose power (for instance if the battery dies or is removed) all stored pictures will be lost. We recommend always downloading your photos to your computer as soon as possible to prevent unintentional data loss.

Q: I have a MAC, will your camera work?

Unfortunately, the system requirements for our cameras require a Windows operating system. There is no Mac driver available and no current plan to develop.

This device complies with the part 15 of the FCC rules. Operation is subject to the following two conditions: (1) this device may not cause harmful interference, and (2) this device must accept any interference received, including interference that may cause undesired operation.

Caution: changes or modifications not expressly approved by the party responsible for compliance could void the user's authority to operate the equipment.

NOTE: This equipment has been tested and found to comply with the limits for a Class B digital device, pursuant to Part 15 of the FCC Rules. These limits are designed to provide reasonable protection against harmful interference in a residential installation. This equipment generates. Uses and can radiate radio frequency energy and, if not installed and used in accordance with instructions, may cause harmful interference to radio communications. However, there is no guarantee that interference will not occur in a particular installation. If this equipment does cause harmful interference to radio or – television reception, which can be determined by turning the equipment off and on, the user is encouraged to try to correct the interference by one or more of the following measures:

- Reorient or relocate the receiving antenna.
- Increase the separation between the equipment and receiver.
- Connect the equipment into an outlet on a circuit different from that to which the receiver is connected.
- Consult the dealer or experienced radio/TV technician for help.

Free Manuals Download Website

<http://myh66.com>

<http://usermanuals.us>

<http://www.somanuals.com>

<http://www.4manuals.cc>

<http://www.manual-lib.com>

<http://www.404manual.com>

<http://www.luxmanual.com>

<http://aubethermostatmanual.com>

Golf course search by state

<http://golfingnear.com>

Email search by domain

<http://emailbydomain.com>

Auto manuals search

<http://auto.somanuals.com>

TV manuals search

<http://tv.somanuals.com>