

# 92045 Digital Camera

## Owner's Manual



**SAKAR**  
INTERNATIONAL INC.

© 2007 Sakar International, Inc. All rights reserved.

Windows and the Windows logo are registered trademarks of Microsoft Corporation.  
All other trademarks are the property of their respective companies.

## Table of Contents

What your camera includes: .....	3
Computer System Requirements .....	3
A Quick Look at Your Camera .....	4
Preparing Your Camera for Use .....	5
Starting Your Camera .....	7
The Camera Modes .....	8
Installing Spider-Man Photo Lab Software .....	11
Software & Camera Driver Installation .....	11
Downloading Photos .....	15
About Spider-Man Photo Lab .....	20
Camera Maintenance .....	22
Technical Support .....	22
Sakar Warranty Card .....	22
Appendix A: Technical Specifications .....	23
Appendix B: Troubleshooting .....	24

## Introduction

Thank you for purchasing your 92045 digital camera. Please read this manual carefully FIRST in order to get the most out of your digital camera.

## What your camera includes:

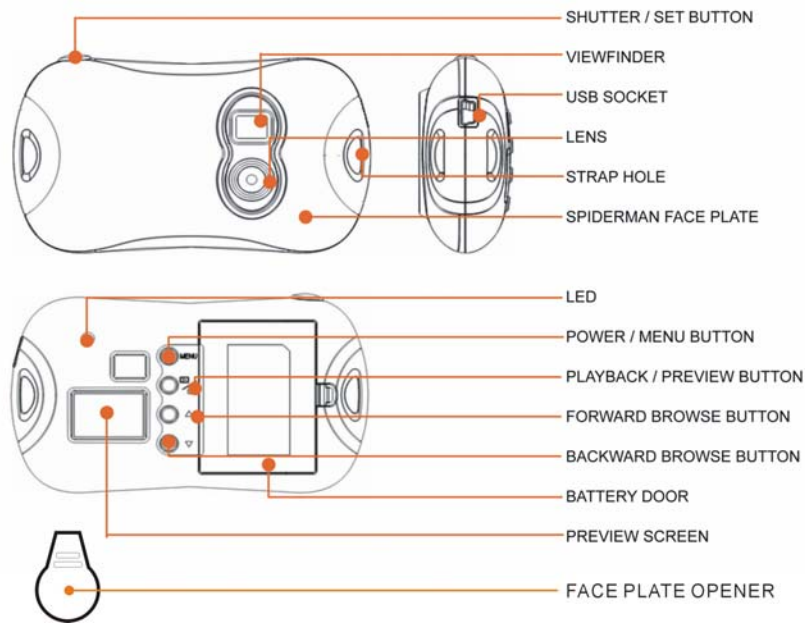
- Digital Camera
- Spider-Man Photo Lab software and driver installation CD
- USB cable
- User's Manual
- Strap

## Computer System Requirements

To be able to download photos to your PC you will need the following minimum configuration:

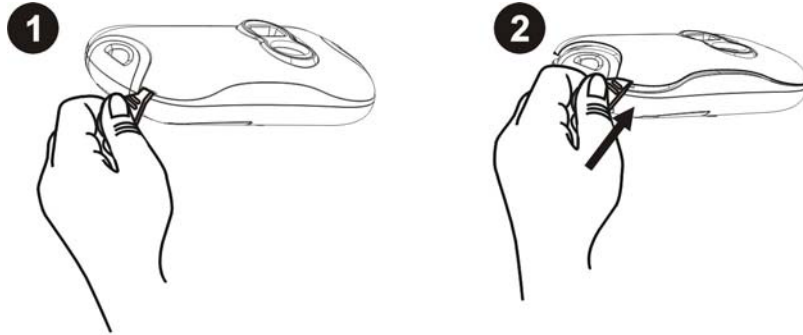
- Windows 2000/XP
- Pentium-based PC (or equivalent)
- 200 MB hard disk free space and 128 MB or more RAM
- Available USB Interface
- CD-ROM Drive
- Color display (16 bit or higher recommended)
- Screen resolution 1024 X 768

## A Quick Look at Your Camera

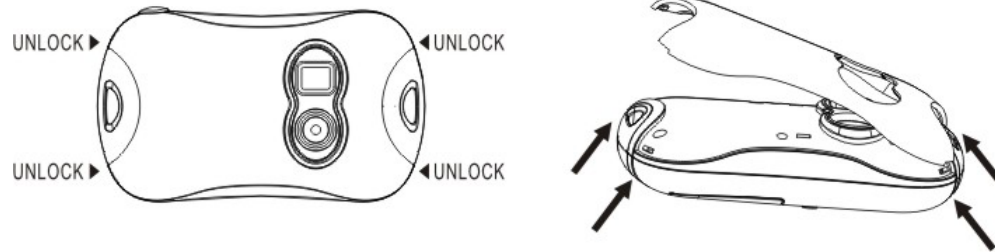


## Preparing Your Camera for Use

### Face Plate Disassembly



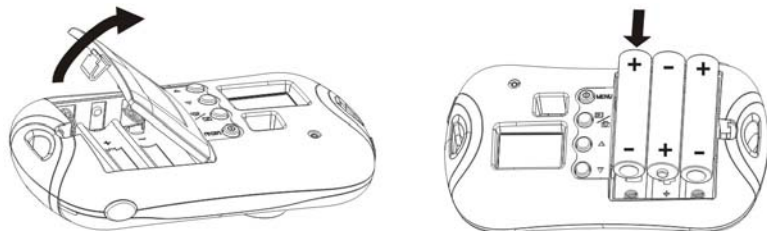
You can use the opener to disassemble the face plate from the camera.



## Battery Installation

Your camera requires three AAA alkaline batteries, which must be inserted as follows:

1. Open the battery compartment on the back of the camera.
2. Insert the batteries in accordance with the polarity (+/-) shown in the battery compartment.
3. Close the battery compartment.



The LCD will flash if your batteries are running low in which case you will need to replace the camera's batteries before taking photos.

**Note:** If you do not intend to use your camera for an extended period, remove the batteries to avoid leakage and corrosion.

**Warning:**

- Please download any photos you have on the camera before opening the battery compartment.

- Opening the battery compartment and/or removing the battery will erase the photos currently stored in the camera.
- Download your photos as often as possible. Photos may be lost when the batteries run low.

## Starting Your Camera

Press the POWER / MENU button to start the camera. The camera will sound a beep to confirm that it is ready for use.

## Taking Photos

1. Compose your shot using the viewfinder. (The optimal distance between the camera and the subject is approximately 5 feet.)
2. Hold the camera steady and press the Shutter button to take a photo.
3. The camera will beep and the number of photos remained for the memory will be displayed on the screen. Each consecutive photo taken will reduce this number by one.

If the photo taken number fails to reduce or if a "000" appears on the screen this is an indication that the memory is full in which event no further photos can be taken until the existing photos have been downloaded and cleared from the camera memory.

**Note:** The screen display indicates how many photos may still be taken at the current resolution

## The Camera Modes

### Preview Mode

This is the default mode for this camera, from which you can compose and take your photos. This mode also enables you to delete the last one or all of your photos, or to change the camera's resolution selection.

### Delete All Photos

Press the Menu button once to enter the Delete All Photos option. The following will appear on the screen:



Press the Shutter button 2 times within 5 seconds to choose this option and delete all photos from your camera.

All photos will be deleted, and the camera will automatically revert to Preview mode.

### Delete One Photo

Press the Menu button twice to enter the Delete One Photo menu. The following will appear on the screen:





Press the Shutter button once within 5 seconds to choose this option and delete the last photo taken with your camera.  
The last photo will be deleted, and the camera will automatically revert to Preview mode.

#### **Resolution Selection**

Press the Menu button three times to enter the Resolution Selection menu. The following will appear on the screen:



Press the Shutter button within 5 seconds to change the resolution setting on your camera. The resolution will be changed, and the camera will automatically revert to Preview mode

**Note:**


✦✦-- VGA photo (You can take 24 photos with the camera memory)

✦

-- QVGA photo (You can take 93 photos with the camera memory)

### **Playback Mode**


This mode enables you to look through the photos stored on your camera using the screen.

Press the  button to enter the Playback mode.


The mode has three options:

1. View your photos as a slideshow:


The camera will automatically show all photos stored in memory as a slideshow.

To exit this option and revert to Preview mode, press the  button or Menu button.

2. Browse forwards through your photos:

Repeatedly press the  button to scroll through your photos one by one in the order they were taken. You can also delete photos in this mode one by one by pressing the Shutter button. With the photo you wish to delete showing on the screen, press the Shutter button once and you will hear a fast beeping sound. Press the Shutter button a second time to confirm, and the camera will delete the photo on the screen.

3. Browse backwards through your photos:

Repeatedly press the  button to scroll through your photos one by one in reverse order to that in which they were taken. You can also delete photos in this mode one by one by pressing the Shutter button. With the photo you wish to delete showing on the LCD screen, press the Shutter button once and you will hear a fast beeping sound. Press the Shutter button a second time to confirm, and the camera will delete the photo on the screen.

### **Power Off**

Press the Menu button (holding it down for 3 seconds) to switch off the camera.

### **Energy Save Mode:**

To conserve battery power, if the camera is not used for 30 seconds, it will automatically switch off.

## Installing Spider-Man Photo Lab Software

Before attempting to install the software, make sure that you do not have the camera or the USB cable attached to your computer. This may cause your installation to fail. Do not connect the cable to the computer until the entire installation process has been completed. We suggest you follow the step by step instructions that will appear on your screen during the installation process.

### Software & Camera Driver Installation

1. Insert the CD into your CD-Rom drive. Make sure that your camera is not connected to the computer.
2. On the **"Install your camera software"** screen, select your camera model from the drop down list and click the "Install" button to install Spider-Man Photo Lab and your camera driver.

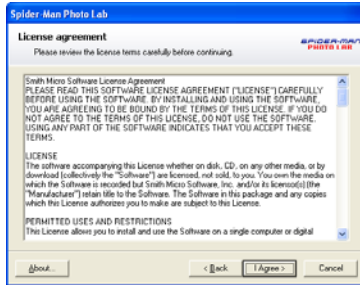


1 -

3. On the "Spider-Man Photo Lab" screen, click the "Next" button.

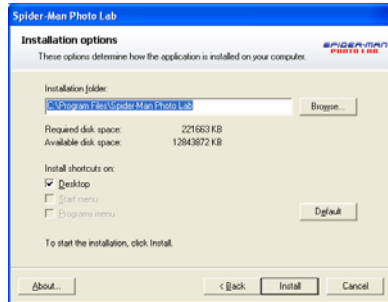


4. Please review the license terms and click the "Agree" button to continue.

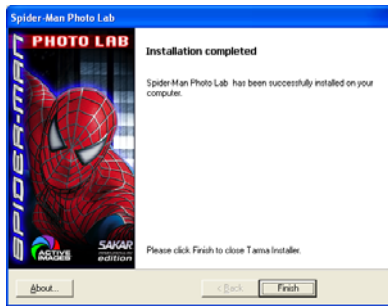


- 12 -

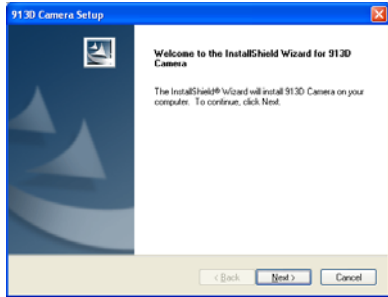
5. Let the “Spider-Man Photo Lab” installer create the folder where the program will be installed to, and then click “**Install**”.



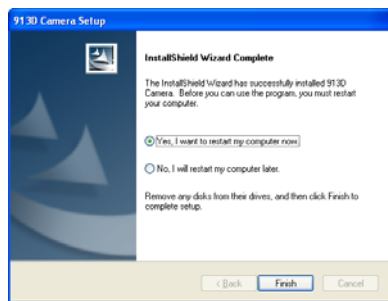
6. Click “**Finish**” to let the “Spider-Man Photo Lab” installer finish the installation program.



7. This will automatically launch the Install shield for the camera driver. Click "**Next**" to continue.



8. Once the camera driver has finished installing you will have to restart your computer.



9. Congratulations!! You have successfully installed the “Spider-Man Photo Lab” software and the Camera driver.

## Downloading Photos

Use the “Spider-Man Photo Lab” program to import photos from your camera.

1. Plug one end of the USB cable into the USB slot on your camera.
2. Plug the other end of the USB cable into a USB port on your computer.
3. Your camera will automatically be turned on.
4. In Windows XP the following activation screens will appear:

- 15 -



Select the "Yes, this time only" option and then click "Next".



From the next screen that appears, select the "Install the software automatically (Recommended)" option and then click "Next".

Wait while the Wizard installs the Software.





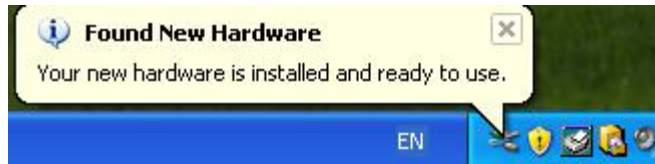
From the next screen that appears click the "Continue Anyway" button, to continue installing the hardware drivers.



Click the "Finish" button. The hardware drivers have now been installed.

5. Be sure to wait until the camera is recognized by your computer.

**Important:** For WinXP users - Do not open the software until you see the “Your new hardware is installed and ready to use” pop-up box on the toolbar. If you do not see this message before you plug in your camera, the camera will not function properly.



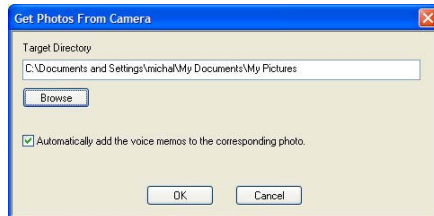
6. Double-click the “Spider-Man Photo Lab” icon that is on your desktop to launch the “Spider-Man Photo Lab” program.



7. Click on the “Get Photos” button on the Main Menu.

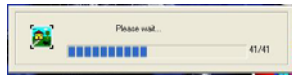


8. The **“Get photos from camera”** window will appear.
9. The photos will be placed by default in the C:\My Documents\My Pictures folder. To select another location click the **“Browse”** button and then select a folder you wish to place your photos.
10. Click the **“OK”** button to proceed.



11. A download photos progress bar will appear.

- 19 -



The photos on your camera will be downloaded and copied to the folder you selected on your computer.

12. Click the **"Select Photos"** button on the Main Menu screen. The folder that you selected will be opened with the photos appearing in the View thumbnails screen.

## About Spider-Man Photo Lab

"Spider-Man Photo Lab" will help you get the most of the camera you just purchased. Packed with powerful, yet easy to use features, "Spider-Man Photo Lab" will let you manage, enhance, turn your photos into Active Images and share your photos with friends and family.

"Spider-Man Photo Lab" is packed with fun things to do with your photos including:

**I am Spider-Man!** - create multiple Spider-Man cards and print with your own face or any face you choose appearing on them.

**Spider-Man Book creator** - write and print your own sticker books. The sticker book offers a variety of 10 templates/ themes to select for your book. You can also print 10 different "Fun stickers" with a variety of themes.

**Slide Show** - select any one of your photo collections and view them as full screen slide shows. You can even add background music that will play during the slide show.

**Games** - play any one of the five fun games including: Word Search, Jigsaw Puzzle, Sliding Puzzle, Mechanical Maze and Word Scramble.

**CD/DVD Label Creator Workshop** - design and print your own customized CD and DVD labels complete with pictures and text.

**Select any two Workshop projects for FREE**

Choose from:

- *Calendar Creator*
- *Albums Maker*
- *Photo frames*
- *Greeting cards*
- *Postcards*

You can purchase and activate all 3 additional workshop projects online at anytime.

**How to purchase additional "Workshop" projects**

1. To purchase the "Workshop Project" simply click the one you want and you will be referred to an online website where you can purchase them.
2. Once you purchase the "Workshop projects" they will be automatically activated in the software.

## **Camera Maintenance**

Your camera is a delicate instrument - please handle it with care.

## **Technical Support**

For technical support issues please visit our website at [www.sakarhelp.com](http://www.sakarhelp.com). You can find manuals, software and FAQ's at the website. Can't find what you are looking for? Fill out an online ticket and one of our technical support team members will answer questions or call 877-397-8200 or 732-476-5098 to access our technical support information on the phone.

## **Sakar Warranty Card**

This warranty covers for the original consumer purchaser only and is not transferable. Products that fail to function properly UNDER NORMAL USAGE, due to defects in material or workmanship. Your product will be repaired at no charge for parts or labor for a period of one year.

### **What Is Not Covered By Warranty:**

Damages or malfunctions not resulting from defects in material or workmanship and damages or malfunctions from other than normal use, including but limited to, repair by unauthorized parties, tampering, modification or accident.

**What To Do When Service Is Required:**

When returning your defective product (postage pre-paid) for service, your package should include:

1. Copy of **original** bill of sale
2. A detailed written description of the problem.
3. Your return address and telephone number (Daytime)

**MAIL TO ADDRESS BELOW:**

Sakar International  
Attention: Service Department  
195 Carter Drive  
Edison, NJ 08817  
Tel: 732-248-1306

You may also visit [www.sakar.com](http://www.sakar.com) for further assistance if necessary or call our tech support department toll free at (877) 397-8200

## Appendix A: Technical Specifications

Image Sensor	CMOS Sensor
Panel	1.1" CSTN (Color screen)
Image Resolution	VGA (640x480 pixels) and QVGA (320x240 pixels)
Memory	8MB Built-in SD RAM memory
Number of pictures	VGA: 24 Photos, QVGA: 93 photos
Power source	3 x AAA (1.5V) alkaline batteries
Auto power off	30 sec.

PC interface	USB 1.1
Operating Systems	Windows 2000 or XP

## Appendix B: Troubleshooting

Q: I have taken photos, but my computer says "No photos in camera." What do I do?

- First, ensure that you have taken photos with your camera. Press the shutter button a few times to take some sample photos and try again. If you still get a no photos error, this indicates that the software was not installed correctly or you may not meet the minimum system requirements.
- System Requirements:  
At least a Pentium II 300 MHz, AMD Athlon 300 MHz, or a Celeron 400 MHz or higher, at least 128 MB of RAM. Please note that the older AMD K6 processors will not work. More information about determining your computer's specifications can be found in the General Computer Information section. If you have determined that you have pictures in your camera and you meet the system requirements, follow the steps below to reinstall the software.
- Software Re-installation:
  1. First install the software. Click on Start, Settings, Control Panel and Add/Remove programs. You will need to remove PhoTags Express. After removing it, restart your computer. If your camera is connected, disconnect it.
  2. Now reinstall the software. Insert the CD that came with your camera. It should automatically run the installation.



3. Restart the computer.

4. Once your computer is back up, plug the camera into your computer's USB port.

5. Right-click on the "My Computer" icon. Select Properties.

Click on hardware and then Device Manager.

If the camera is installed correctly, there will be a category listed for "Imaging Devices" and clicking on the "+" next to it should reveal your camera. If not, you will likely see "Digital Still Camera" under "Other Devices" with a brightly colored marking next to it indicating it is not functioning correctly.

Right click on the non functioning device and select uninstall. If a warning pops up, press OK.

6. Restart your computer again. Your camera is now successfully installed.

Q: How do I make sure I don't lose important pictures?

- Your camera uses flash memory which requires a constant electric current to store your photos. Should your camera lose power (for instance if the battery dies or is removed) all stored pictures will be lost. We

recommend always downloading your photos to your computer as soon as possible to prevent unintentional data loss.

Q: I have a MAC, will your camera work?

Unfortunately, the system requirements for our cameras require a Windows operating system. There is no Mac driver available and no current plan to develop

This device complies with the part 15 of the FCC rules. Operation is subject to the following two conditions:(1) this device may not cause harmful interference , and (2) this device must accept any interference received, including interference that may cause undesired operation.

Caution: changes or modifications not expressly approved by the party responsible for compliance could void the user's authority to operate the equipment.

NOTE: This equipment has been tested and found to comply with the limits for a Class B digital device, pursuant to Part 15 of the FCC Rules. These limits are designed to provide reasonable protection against harmful interference in a residential installation. This equipment generates, uses, and can radiate radio frequency energy and, if not installed and used in accordance with instructions, may cause harmful interference to radio or television reception, which can be determined by turning the equipment off and on. The user is encouraged to try to correct the interference by one or more of the following measures:

- Reorient or relocate the receiving antenna.
- Increase the separation between the equipment and receiver.
- Connect the equipment into an outlet on a circuit different from that to which the receiver is connected.
- Consult the dealer or experienced radio/ TV technician for help.

## Free Manuals Download Website

<http://myh66.com>

<http://usermanuals.us>

<http://www.somanuals.com>

<http://www.4manuals.cc>

<http://www.manual-lib.com>

<http://www.404manual.com>

<http://www.luxmanual.com>

<http://aubethermostatmanual.com>

Golf course search by state

<http://golfingnear.com>

Email search by domain

<http://emailbydomain.com>

Auto manuals search

<http://auto.somanuals.com>

TV manuals search

<http://tv.somanuals.com>