

SGH-i607

S m a r t p h o n e
User Guide

**Please read this manual before operating your
phone, and keep it for future reference.**



UCFJE_WB_i607_110806_d3

Intellectual Property

All Intellectual Property, as defined below, owned by or which is otherwise the property of Samsung or its respective suppliers relating to the SAMSUNG Phone, including but not limited to, accessories, parts, or software relating there to (the "Phone System"), is proprietary to Samsung and protected under federal laws, state laws, and international treaty provisions. Intellectual Property includes, but is not limited to, inventions (patentable or unpatentable), patents, trade secrets, copyrights, software, computer programs, and related documentation and other works of authorship. You may not infringe or otherwise violate the rights secured by the Intellectual Property. Moreover, you agree that you will not (and will not attempt to) modify, prepare derivative works of, reverse engineer, decompile, disassemble, or otherwise attempt to create source code from the software. No title to or ownership in the Intellectual Property is transferred to you. All applicable rights of the Intellectual Property shall remain with SAMSUNG and its suppliers.

Samsung Telecommunications America (STA), L.P.

Headquarters:	Customer Care Center:
1301 E. Lookout Drive	1000 Klein St.
Richardson, TX 75082	Plano, TX 75074
	Toll Free Tel: 1.888.987.HELP (4357)

Internet Address: <http://www.samsungusa.com>

©2006 Samsung Telecommunications America, L.P. is a registered trademark of Samsung Electronics America, Inc. and its related entities.

Do you have questions about your Samsung Mobile Phone? For 24 hour information and assistance, we offer a new FAQ/ARS System (Automated Response System) at:

www.samsungwireless.com/support

Openwave® is a registered Trademark of Openwave, Inc.

RSA® is a registered Trademark RSA Security, Inc.

Disclaimer of Warranties; Exclusion of Liability

EXCEPT AS SET FORTH IN THE EXPRESS WARRANTY CONTAINED ON THE WARRANTY PAGE ENCLOSED WITH THE PRODUCT, THE PURCHASER TAKES THE PRODUCT "AS IS", AND SAMSUNG MAKES NO EXPRESS OR IMPLIED WARRANTY OF ANY KIND WHATSOEVER WITH RESPECT TO THE PRODUCT, INCLUDING BUT NOT LIMITED TO THE MERCHANTABILITY OF THE PRODUCT OR ITS FITNESS FOR ANY PARTICULAR PURPOSE

OR USE; THE DESIGN, CONDITION OR QUALITY OF THE PRODUCT; THE PERFORMANCE OF THE PRODUCT; THE WORKMANSHIP OF THE PRODUCT OR THE COMPONENTS CONTAINED THEREIN; OR COMPLIANCE OF THE PRODUCT WITH THE REQUIREMENTS OF ANY LAW, RULE, SPECIFICATION OR CONTRACT PERTAINING THERETO. NOTHING CONTAINED IN THE INSTRUCTION MANUAL SHALL BE CONSTRUED TO CREATE AN EXPRESS OR IMPLIED WARRANTY OF ANY KIND WHATSOEVER WITH RESPECT TO THE PRODUCT. IN ADDITION, SAMSUNG SHALL NOT BE LIABLE FOR ANY DAMAGES OF ANY KIND RESULTING FROM THE PURCHASE OR USE OF THE PRODUCT OR ARISING FROM THE BREACH OF THE EXPRESS WARRANTY, INCLUDING INCIDENTAL, SPECIAL OR CONSEQUENTIAL DAMAGES, OR LOSS OF ANTICIPATED PROFITS OR BENEFITS.

UCFJE_WB_i607_110806_d3

Table of Contents

Section 1: Getting Started	7
Activating Your Phone	7
Powering On or Off the Phone	14
The Home Screen	14
Section 2: Understanding Your Phone	17
Basics	18
Front View of Your Phone	18
Rear View of Your Phone	21
Internal Display Layout	24
Customizing the Home Screen	27
Start menu screen	28
Entering text	29
Customizing Your Phone	30
Power Settings	31
Security Settings	34
Using an Optional microSD Memory Card	39
Resetting your Phone	43
Using Online Help	44
Section 3: Synchronization	45
Installing Microsoft® ActiveSync®	46
Customizing Connection Settings	47
Connecting Your Phone to a Computer	48
Connecting with a PC data cable	48
Synchronizing Information	50
Customizing Synchronization Settings	51
Section 4: Call Functions	55
Turning the Phone Functions On and Off	56
Using the Dialling Screen	56
Making a call	57
Advanced Calling Features	57
Answering or Ignoring a Call	59
Options During a Call	59
Call-related features	61
Customizing Your Phone Functions	63
Section 5: Menu Navigation	67
Menu Navigation	68
Using Shortcuts	68
Section 6: Cingular Music	73
Windows Media Player.....	74
Shop Music	80
MusicID	81
Streaming Music	83
Music Videos	83

The Buzz	85
Music Community	86
Music Apps	86
Section 7: Cingular Video	87
Media Clip Options	88
Using the Video Categories	91
Customizing Cingular Video	92
My Purchases	93
Parental Controls	94
Section 8: Cingular Mail	97
Shop Tones	97
Shop Games	98
Shop Graphics	99
Shop Multimedia	99
Shop Application	100
MEdia Net Home	100
Section 9: Messaging, Internet, and Messenger	103
Messaging	104
Working with SMS or MMS Messages	104
Internet Explorer	116
Section 10: Camera	121
Camera	122
Section 11: Organizer	129
Alarms	130
Calculator	131
D-Day	131
NotePad	132
Smart Converter	133
Stopwatch	134
Tasks	134
Voice Notes	135
World Clock	136
Section 12: Games	139
Games	140
Section 13: Extra Programs	143
Download Agent	144
File Explorer	144
Java	145
Picxel Viewer	145
RSS Reader	148
Smart Search	150
Speed Dial	151
Task Manager	151

Section 14: Getting Connected	153
Beaming with Bluetooth	153
Connecting to the Internet or your network	157
Creating a VPN connection	159
Section 15:Troubleshooting	163
General	164
Call Problems	168
Power and Charging Problems	170
Program Problems	172
Section 16: Health and Safety Information	179
Health and Safety Information	179
UL Certified Travel Adaptor	181
Consumer Information on Wireless Phones	182
Road Safety	192
Operating Environment	194
Using Your Phone Near Other Electronic Devices	194
Potentially Explosive Environments	196
Emergency Calls	197
FCC Notice and Cautions	198
Other Important Safety Information	199
Product Performance	199
Availability of Various Features/Ring Tones	201
Battery Standby and Talk Time	201
Battery Precautions	201
Care and Maintenance	203
Section 17: Warranty Information	205
Standard Limited Warranty	205
Index	212

Section 1: Getting Started

Topics Covered


- Activating Your Phone
 - Powering On or Off the Phone
 - The Home Screen
-

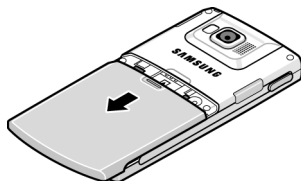
This section describes how to start using your phone by activating your phone, inserting your SIM card and battery, and navigating from the Home screen.

Activating Your Phone

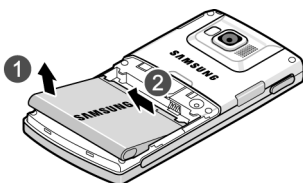
When you subscribe to a cellular network, a plug-in Subscriber Identity Module (SIM) card is provided loaded with your subscription details, such as your PIN and other optional services.

Removing the Battery

1. If necessary, power-off the phone by holding down the  key (located at the top-left of your handset) until the power-off image displays.



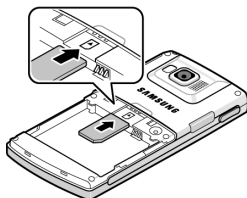
2. Remove the battery cover by pressing the battery lock down and slide the battery cover away, as shown.
3. Lift the battery from the bottom up and out of the phone.



Installing the SIM Card

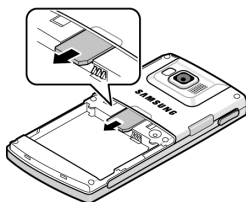
Important! The plug-in SIM card and its contacts can be easily damaged by scratches or bending. Use caution when inserting or removing the card and keep all SIM cards out of reach of children.

Make sure the gold contacts of the card face into the phone, then slide the SIM card into the socket.



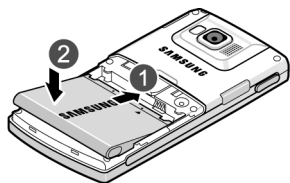
Removing the SIM Card

To remove the SIM card, slide it away from socket. See the following illustration.



Installing the Battery

1. Align the battery tabs with the slots at the bottom of the phone.
2. Press the battery down until it clicks into place. Make sure that the battery is properly installed before switching on the phone.



3. With the battery in position on the phone, place the cover back on the handset and slide it in until it clicks.



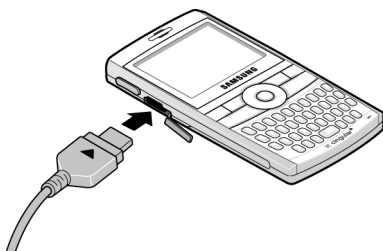
Charging a Battery

Your phone is powered by a rechargeable Li-ion battery. Use the travel adaptor to charge the battery, and use only Samsung approved batteries and chargers.

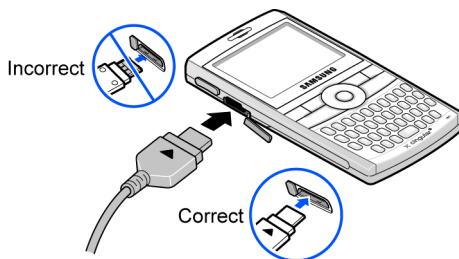
Note: You must fully charge the battery before using your phone for the first time. A discharged battery recharges fully in approximately 200 minutes. You can use the phone while the battery is charging, but this causes the phone to charge more slowly.

Note: For connection to an electrical supply not located in the U.S., you must use an adaptor of the proper configuration for the power outlet. Use of the wrong adaptor could damage your phone and void your warranty.

1. Plug the connector of the travel adaptor into the jack on the left side of the phone.



Note: The following illustration shows the **correct** and **incorrect** method for connecting the charger. Verify the arrow on the adapter is showing and pointing to the handset for a correct connection. If it is not, damage to the accessory port will occur therefore voiding the phones warranty.




2. Plug the adaptor into a standard AC wall outlet. When charging is finished, unplug the adaptor from the power outlet.



Note: You must unplug the adaptor before removing the battery from the phone during charging to avoid damage.

Low Battery Indicator

When the battery is weak and only a few minutes of talk time remain, a warning tone sounds and the “Main Battery very low” message repeats at regular intervals on the display and the battery icon  displays. The backlight turns off to conserve the remaining battery power.

When the battery level becomes too low, the phone automatically turns off.

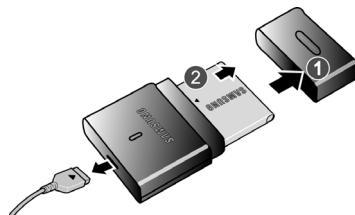
Using the Battery Charger

Your device comes with a battery charger to charge the additional battery. The approximate battery charge time using the battery charger is 200 minutes.

1. Open the battery charger cover and insert the battery as shown.





2. Plug the power cord into the wall outlet after you have inserted the battery into the battery charger and closed the lid.




3. Once the battery has completed charging, unplug the cord from the wall outlet, open the battery charger, and remove the charged battery from the charger.



Note: You can also use the battery charger as a carrying case for your extra battery.

Powering On or Off the Phone

1. Press and hold the  key until the phone power-on screen displays.
The phone is logged into your home network and receives the signal from the network. You can now make or answer a call and use programs on the phone.
2. To turn off the phone, press and hold .

The Home Screen

The **Home** screen displays important information, such as upcoming appointments, status indicators, the current date, time, and profile, and icons of programs that you have recently used. You can open a program directly by selecting its icon and pressing .

- To access the Home screen from anywhere, press .
- To customize the **Home** screen display, including the background, click **Start > Settings > Display > Home Screen** and press the  key.

Home Screen Options

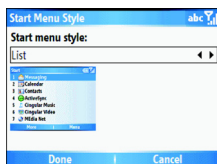
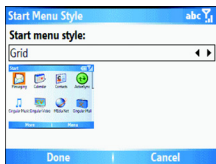
Use the Up and Down Navigation keys to choose from the options available in the following fields:

- Home screen layout
- Color scheme

- Background image
- Time out.

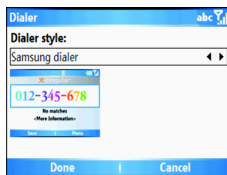
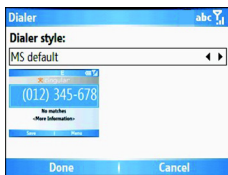
Start Menu Style

Use the Left and Right Navigation keys to choose from the Grid or List display options.



Dialer

Use the Left and Right Navigation keys to choose from the MS default and Samsung dialer style display options.



Section 2: Understanding Your Phone

Topics Covered


- Basics
 - Front View of Your Phone
 - Rear View of Your Phone
 - Internal Display Layout
 - Customizing the Home Screen
 - Start menu screen
 - Entering text
 - Customizing Your Phone
 - Power Settings
 - Inserting the microSD memory card
-

This section outlines some key features of your phone. It also displays the screen and the icons that will be displayed when the phone is in use.

Basics

This chapter explains basic information about using your phone, such as customizing your phone and using online help.

Home Screen

When you turn on your phone, the Home screen, the phone's idle screen, appears. You can also access this screen by pressing  from any program.

On the Home screen, you can view important information for the day or messages at a glance. You can also quickly switch to the programs you recently accessed.

Front View of Your Phone

The following illustrations show the main elements of your phone:






Keys

The following list correlates to the front view illustration.

1. **Power ON/OFF Button:** Press and hold to turn the device on or off. When the device is on, a short press displays the Quick List screen.
2. **Volume keys:** Adjusts the earpiece volume or the to adjust the ringer volume in standby mode or adjust the voice volume during a call. To mute the ringer during an incoming call, press the volume key up or down. To reject an incoming call, press the **Ignore** soft key or press and hold the down volume key. This will send the call to your voicemail.
3. **Headset/adaptor jack/USB or data cable:** Allows you to plug in the travel adapter (power), PC connection cable (data transfer), and optional headset for safe, convenient, hands-free conversations.
4. **OK key:** Allows you to access the menu screen. It also allows you to accept choices when navigating through a menu.
5. **Left Soft key (LSK):** Allows you to select softkey actions or menu items corresponding to the bottom left line on the display screen.
6. **Home key:** Short press to return to the Home Screen from any menu, submenu, or application.
7. **Send key:** Short press to open the dialing screen. Press to make or answer a call. In standby mode, press the key once to access the Recent Call log. If you press and hold the key down, you will initiate the most recent call from

the Recent Call log. During a call, press and hold will launch the speakerphone option. During a call, a short press will place the call on hold or unhold.

8. **Voicemail key:** Press and hold the  key to automatically dial your voicemail.
9. **Built in QWERTY Keypad:** allows you to enter numbers, letters, and characters using a full Qwerty keypad interface.
10. **Microphone:** The Microphone allows the other callers to hear you clearly when you are speaking to them.
11. **Messaging:** A short press of the Messaging key allows you to access the SMS/MMS, Microsoft Mobile® Outlook® E-mail or other E-mail accounts you have setup. A long press of this key will darken the screen to save battery life-any key pressed will show the screen.
12. **End key:** Ends a call or exit a program. Press and hold this key for two seconds to lock the keypad. While in the main menu, it returns the phone to standby mode and cancels your input. When you receive an incoming call, press the Left Soft key  Ignore. During a call, you can reject by pressing the  key.
13. **Back/Clear key:** Press to close the current menu and return to the previous menu or screen. While in any text edit screen, you can also press to backspace and clear text. Press and hold to clear all text in the field.
14. **Right Soft key (RSK):** allows you to select softkey actions or menu items corresponding to the bottom right line on the display screen.

- 15. Navigation keys:** This key allows you to scroll through phone menu options and provides a shortcut to phone functions from standby mode.
- 16. Display:** This screen displays all the information needed to operate your phone.
- 17. Earpiece:** Used to listen to audio from your phone.

Rear View of Your Phone



Keys


The following list correlates to the rear view illustration.

- 1. microSD card slot:** Your phone has an external memory port for a microSD card.
- 2. Thumbwheel dial:** used to navigate through menu options or in your Contacts list. Press to select or execute the program selected. Press and hold to display the quick launcher.

3. **Back/Clear key or Camera key:** A short press will clear the entry or take you to the previous menu. A long press launches the camera to take a photo or to whatever option you have set for this key.
4. **External Speaker:** plays the audio during a call using the speakerphone option and plays music or video files using the Windows Media Player®.
5. **Camera lens:** the camera lens is used for taking pictures and videos.
6. **Mirror:** displays your reflection when taking pictures.

Back Light

A back light illuminates the display and the keypad when you press any key or open the phone. It turns off when no keys are pressed within a given period of time, and/or dims the light, depending on the settings in the **Start > Settings > More > Power Management > Display Time Out** options.


To quickly turn your screen off, press and hold the .

Back Light When Keypad is Locked

When the back light dims and your keypad is locked you must follow the Unlock the Keypad instructions to display the screen image.

To Lock the Keypad



To lock your keypad use the following steps.

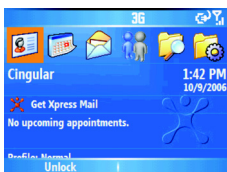
1. Press and hold the  key.


To Unlock the Keypad

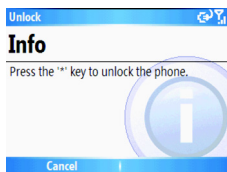
To unlock your keypad use the following steps.

Rear View of Your Phone

1. Press the Power ON/OFF Button .
2. Press the Left Soft Key  (Unlock).



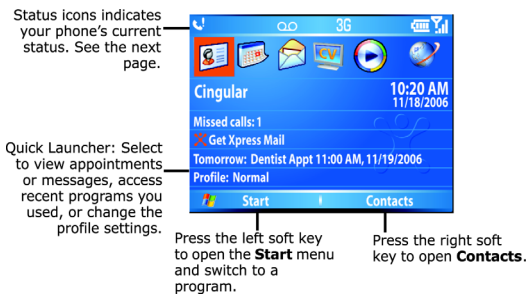
3. Press the  key to unlock the keypad.



Internal Display Layout

Status Bar

The display has 3 areas. On the top line of the screen, the status bar displays icons to show your phone's current status. Just below the display area, the Quick Launcher is displayed. And third is the Soft key command line.



The following icons can be displayed:





Shows the strength of the signal. You can also view the following service status:




Shows full wireless coverage using data in the 3G coverage.


 No wireless coverage


 Wireless is turned off

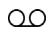
 Changes the ringtone to vibrate.


 Appears when Bluetooth is activated.


 Appears when an error occurs during synchronization.

 Appears when a text (SMS) message, Instant Message or an Email message has been received.

 Appears when a multimedia (MMS) message has been received.


 Appears when a new voicemail has been received.



 Appears when there is a call you have missed

 Appears when you have set incoming calls to be forwarded to another destination.

Accessing Information from the Home Screen

From the Home screen, you can:

- access your Contact List
 - view upcoming appointments
 - view unread text (SMS), multimedia (MMS) messages and Email messages
 - access the most recently accessed programs
 - change the profile option
1. From the Home screen, scroll to the item you want on the Quick Launcher by pressing the Navigation keys or spinning the Thumbwheel Up or Down, and press  to access appointments or messages, or change the profile setting. For more information on changing these items, see the appropriate instructions for each task in this guide.


2. Press  or  to return to the Home screen. To change information on each item.

Note: To ensure that operations, such as moving or saving files, proceed to completion, wait at least 50 seconds before removing the battery.

Customizing the Home Screen

You can customize the Home screen according to your preferences.

Setting the Home Screen Properties

1. On the Home screen, press the **Start** soft key.
2. Select **Settings > Display > Home Screen** press .
3. Press the Up or Down Navigation key to scroll to an option.
4. Press the Left or Right key to change the setting. The following options are available:
 - **Home screen layout:** Select the layout to be used for the Home screen.
 - **Color scheme:** Select the color scheme to be used for the Home screen.
 - **Background image:** Select an image to use as a background image on the Home screen.
 - **Time out:** Specify the length of time the phone waits before returning the display to the Home screen if the phone is not used.
5. When you have finished, press the **Done** soft key.

Changing the Right Soft Key Function

Contacts is assigned by default to the right soft key on the Home screen. You can change the program assignment for the key.

1. On the **Home** screen, press the **Start** soft key.
2. Select **Settings > More... > Key Settings > Home Screen RSK**. Press **OK**.
3. Use the Left or Right Navigation keys to select the program you want in the **Right Soft key Program** field.
4. Use the keypad to enter the name to be displayed on the Home screen for the program in the **Display name** field.
5. When you have finished, press the **Done** soft key.

Note: The Right Soft Key display will show the setting you have set in this step. If you miss a call, Call History will display. When you receive the SMS or MMS, Message is appeared.

Start menu screen



On the Start menu, you can access all of the programs in your phone. On the Home screen, press the **Start** soft key to open the **Start** menu screen.


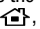

Opening programs or folders

Scroll to a program or a folder by pressing the Navigation keys and press **OK** to open it. If you have selected the List display option, you can also press the number key assigned to the program you want.

Switching between programs



Your phone is a multi-tasking device. You can run multiple programs at the same time and switch from

one program to another. From any program, press  or  to switch to the Home screen. Then access another program from the Quick Launcher or Start menu.

Note: When you use a GPRS connection, pressing  terminates the connection. If you want the current connection to continue, press , or  as many times as necessary, to switch to the Home screen.


Closing programs


Using Task Manager, you can end the programs which are currently open.

1. On the Home screen, press the **Start** soft key and then the **More** soft key.
2. Select **Applications > Task Manager** and press  or press and hold the  key.
3. Scroll to a program, press the **Stop** soft key. To close all of the running programs, press the **Menu** soft key and select **Stop all**.

Entering text

Your phone is equipped with a QWERTY

 keypad to support easy and quick text input. You can enter text as you would when using a computer's keyboard.


The keys are labelled with alphabet on the lower half and numbers and symbols on the upper half. Press the key corresponding to the character you want to enter. To switch between using the upper case characters and lower case characters, press .


You can move the cursor by pressing the Navigation keys.


In addition, you can use the following function keys:


 Press to delete characters.

 Press to start a new line.

 Press to change the text input mode to Upper/Lower case mode.

 Press to change the text input mode to the symbols above the letter.

 Press to change the text input mode to Numeric input mode.

 Press to change the text input mode to Symbols mode.

Customizing Your Phone

You can customize the phone settings to suit the way you work.

Regional settings

Using Regional Settings, you can change number, currency, and time and date formats appropriate to the countries in question.

1. On the **Home** screen, press the **Start** soft key.
2. Select **Settings > More... > Regional Settings**.

3. Select the option you want in each field.
4. When you have finished, press the **Done** soft key.

Note: If you changed the Language or Locale option, press the **Done** soft key. Then you need to turn the phone off and then back on for your changes to take effect.

Time and date settings

The Date and Time setting enables you to set the date, time, and time zone.

1. On the **Home** screen, press the **Start** soft key.
2. Select **Settings > Date and Time**.
3. Select your **Time zone** and set the current **Date** and **Time**.
4. You can also enable **Auto update** by using the Left or Right Navigation key.
5. When you have finished, press the **Done** soft key.

Power Settings

You can conserve battery power by adjusting the time-out settings for the display and the backlight of the keypad and display or adjusting the display brightness.

1. On the **Home** screen, press the **Start** soft key.
2. Select **Settings > More... > Power Management**.
3. Select the power settings:
 - **Main battery:** You can check the remaining battery power.
 - **Backlight time out on battery:** You can select the length of time the display backlight stays on when you do not use the phone. Choose from Never, 5 seconds, 10 seconds, 20 seconds, 30 seconds or 1 minute.



- **Backlight time out on AC:** You can select the length of time the display backlight stays on while charging. Choose from Never, 1 minute, 2 minutes, 5 minutes, or 10 minutes.
- **Display time out:** You can select the length of time the display stays on. During standby, the phone goes to Sleep mode after a specified period of time, so very little power is being consumed. Choose from Never, 10 seconds, 20 seconds, 30 seconds, 1 minute, 2 minutes, or 5 minutes.
- **Display Brightness:** You can adjust the brightness for the display. Choose from Level 1- Level 5.
- **Keypad backlight on:** You can select when the keypad backlight is used. Choose from Any time or Custom time. If you have chosen Customer time, enter the time in the following fields.
 - Start time
 - End time

4. When you have finished, press the **Done** soft key.

Changing the Sound Profile

Using Profiles, you can adjust and customize the phone tones for different events or environments and then apply the settings as a group. The currently selected profile displays on the Home screen.

1. To change profiles: On the **Home** screen, press the **Start** soft key.
2. Select **Settings > Profiles**. The list of profiles opens.
3. Select the profile you want.
If you select Automatic, the profile will automatically switch between Normal and Meeting according to your calendar items.

Notes: You can quickly change the profile with a short press of the  key. Press and select the profile you want from the **Quick List**. You can quickly activate or deactivate the **Silent** profile by pressing and holding from the  **Home** screen.

To customize profiles:

1. On the **Profiles** screen, scroll to the profile you want.
2. Press the **Menu** soft key and select **Edit**.
3. Change the settings in each field. Available options may differ depending on the selected profile.
4. When you have finished, press the **Done** soft key.

Notes:

To change all profile settings to their factory default, press the Menu soft key from the profile list and select **Reset to default**.

Owner Information

Owner Information identifies the owner or user of the phone. Set your contact information in case you have lost the phone.

1. On the **Home** screen, press the **Start** soft key.
2. Select **Settings > More... > More... > Owner Information**.
3. Fill in each input field.
4. When you have finished, press the **Done** soft key.

Error Reporting Setting

Your phone has the Error Reporting function which informs you of errors in a program that can give a crash

to the phone system. You can enable or disable this function.

1. On the **Home** screen, press the **Start** soft key.
2. Select **Settings > More... > More... > Error Reporting**.
3. Select **Enable** or **Disable** and press the **Done** soft key.

Security Settings

With options in Security, you can protect your phone and SIM card from unauthorized use.

Locking the Phone

You can protect your phone using the Device Lock feature. Once the feature is enabled, your phone is automatically locked after the specified period of inactivity.

Note: Even if the phone is locked, you will be able to receive calls.

To lock the phone:

1. On the **Home** screen, press the **Start** soft key.
2. Select **Settings > More... > Security > Device Lock**.
3. Select **Prompt if device unused for** and select a length of time the phone waits for before locking itself when it is not in use. Press the **OK** key to mark the checkbox.
4. Scroll to the **Password type** field and select a password type.
 - Simple PIN: Use a numeric password.
 - Strong alphanumeric use an alphanumeric password. A password must be more than 7 characters and contain at least 3 of uppercase and lowercase letters, numbers, or punctuation marks.

5. Enter a password in the **Password** field.
6. Re-enter the same password in the **Confirm password** field for confirmation.
7. Press the **Done** soft key.
8. Press the **Yes** soft key.

To unlock your phone:

1. On the **Home** screen, press the **Unlock** soft key.
2. Enter the password and press the **Done** soft key.

Activating the SIM PIN

When SIM PIN is enabled, you must enter your PIN supplied with your phone each time you turn the phone on or insert the current SIM card into another device.

Consequently, any person who does not have your PIN cannot use your phone without your approval.

1. On the Home screen, press the **Start** soft key.
2. Select **Settings > More... > Security > Enable SIM PIN**.
3. Enter the **PIN** and press the **Done** soft key.

Locking the SIM Card

When SIM Lock is enabled, your phone works only with the current SIM card. To use another SIM card, you must enter the SIM lock password.

1. On the **Home** screen, press the **Start** soft key.
2. Select **Settings > More... > Security > Enable SIM Lock**.

3. Enter a password for your SIM card and press the **Done** soft key.
4. Re-enter the password for confirmation and press the **Done** soft key.


Changing PIN2

A PIN 2 is used for certain functions supported by the SIM card. You can change the PIN2 supplied with your SIM card to a new one.

1. On the **Home** screen, press the **Start** soft key.
2. Select **Settings > More... > Security > Change PIN2**.
3. Enter the current PIN2 in the **Old PIN** field, then a new PIN in the **New PIN** field, and re-enter the new PIN in the **Confirm new PIN** field.
4. Press the **Done** soft key.

Side Key Setting

You can change the program assigned to the user-defined function key, to your favorite program.

Note: When you change the side key  setting, the long press option is activated to the new setting. A short press will continue to return to the last menu that you have accessed.

1. On the **Home** screen, press the **Start** soft key.
2. Select **Settings > More > Key Settings > Side Key Settings**.
3. Use the Left or Right Navigation keys to select the program.
4. Press the **Done** soft key.

Menu Shortcut Settings

If you have set your **Start menu style** settings to **List**, (for more information on how to change from List or Grid, see "Start Menu Style" on page 15) then number keys can be used as shortcut keys to directly access specific programs that exist in the **Start** menu.

Note: You can also assign phone numbers, e-mail addresses, or web pages in Contacts to the number keys as speed dial entries.

Assigning A Shortcut To A Key

1. On the **Home** screen, press the **Start** soft key.
2. Scroll to the program you want to assign to a key.
3. Don't press the **OK** key, press the Right Soft Key **Menu** soft key and select **1 Add Speed Dial**.
4. Press the **OK** key.
5. If necessary, enter the name you want in the **Name** field.
6. Select a location in the **Keypad assignment** field use the Left or Right Navigation key to select the numeric assignment and press the **Done** soft key.

Accessing A Menu Using It's Shortcut

On the **Home** screen, use one of the following ways:

- For one-digit shortcut keys, press and hold the number key.
- For two-digit shortcut keys, press the first number key and then press and hold the last number key.

Searching For Items

Your phone provides a search program, **Smart Search**, to allow you to search for data or media files in your phone with ease and quickly access them.

Searching For An Item

1. On the **Home** screen, press the **Start** soft key and then the **More** soft key.
2. Select **Applications > Smart Search**.
3. Enter the first few letters of the item name in the **Find** field and select an item type in the **Type** field.
4. Select **Match case** and/or **Match whole word** to let the phone to search for the matching items more quickly.
5. Press the **Go** soft key. The phone searches its file directory or programs and lists all matching items.
6. Scroll to the one you want and press the **Open** soft key.

Setting Up The Search Options

You can change the search options for each item type to provide the phone with more specific information to narrow the search items.

1. From the **SmartSearch** screen, press the **Menu** soft key and select **Options**.
2. Select the item type you want and set each option. Choose from the following options to define your search options:
 - Contact
 - Appointment
 - Task
 - Text message
 - E-mail
 - Phone call
 - File Name
3. When you have finished, press the **Done** soft key.

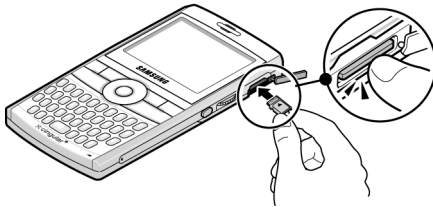
Using an Optional microSD Memory Card

Your phone has an expansion slot compatible with microSD memory cards, which are primarily used to back up or transfer files and data.

Note: Use only compatible memory cards with your phone. Using incompatible memory cards, such as Secure Digital (SD) cards, may damage the card, as well as the phone, and data stored on the card.

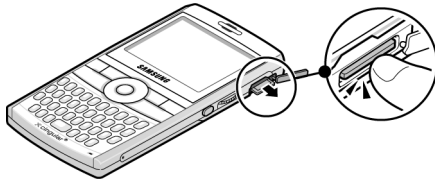
Inserting the microSD memory card

Push the microSD memory card into the slot with the label side face down until it clicks into place. The card is secure when it is not protruding from the phone.



Removing the microSD memory card

To remove the microSD memory card, push it in and release so that it is disengaged from the slot. Then slide the card out.



Adding and removing programs

You can install any program created for your phone, as long as the phone has enough memory. The most popular place to find software for your phone is on the Microsoft web site (<http://www.microsoft.com/mobile/smartphone>)

Adding Programs Using Microsoft® ActiveSync®

You can install programs downloaded from the Internet or included on the Getting Started CD included with your Samsung BlackJack™ by performing synchronization between your phone and your computer.

First you need to determine what your phone and processor type is so that you know which version of the software to install.

1. On the **Home** screen, press the **Start** soft key and select **Settings > More... > More... > About**. Check the version of your phone.

2. Download a program to your computer from the Internet or insert the Getting Started CD that contains the program into your computer.
Be sure to select the program designed for your phone and the phone's processor type.
3. Read any installation instructions, Read Me files, or documentation that comes with the program.
4. Connect your phone to your computer and make sure that the Microsoft® ActiveSync® is running.
5. Double-click the *.exe file on the computer. If the file is an installer, the installation wizard will begin. Follow the instructions on the screen. Once the software has been installed, the installer will automatically transfer the software to your phone.

If the file is not an installer, you will see an error message. You need to move this file to your phone by using Microsoft® ActiveSync® Explore to copy the program file to the **\Windows\Start Menu** folder on your phone. Once installation is completed, you can view and open the program by accessing the **Start** menu.

Adding a Program Directly from the Internet

First, you need to determine what your phone and processor type is so that you know which version of the software to install.

1. On the **Home** screen, press the **Start** soft key and select **Settings > More... > More... > About**. Check the version of your phone.

2. Download the program to your phone straight from the Internet using **Internet Explorer**.
Be sure to select the program designed for your phone and the phone's processor type.
3. Read any installation instructions, Read Me files, or documentation that comes with the program.
4. Select the file, such as a *.zip or *.exe file. The installation wizard will begin.
5. Follow the directions on the screen.
Once installation is completed, you can view and open the program by accessing the Start menu.

Removing Programs

1. On the **Home** screen, press the **Start** soft key.
2. Select **Settings > More... > Remove Programs**.
3. Scroll to the program you want to delete.
4. Press the **Menu** soft key and select **Remove**.
5. Press the **Yes** soft key to confirm the deletion.
6. When you have finished, press the **Ok** soft key.

Managing Certificates

On your phone you can add and delete public key certificates. You can store the following two types of certificates on your phone.

1. To access the Certificates options, on the **Home** screen, press the **Start** soft key.
2. Select **Settings > More... > Security > Certificates**.
 - Personal: help to establish your identity, when you log on to a secured network, such as a corporate network.

- Root: help to establish the identity of servers with which you connect. This helps to prevent unauthorized users from accessing your phone and information.

Deleting a Certificate

1. Scroll to the certificate you want on the list.
2. Press the **Menu** soft key and select **Delete**.
3. Press the **Yes** soft key to confirm the deletion.

Resetting your Phone

You can reset your phone's settings and clear all added data from memory.

Resetting the Phone

1. On the **Home** screen, press the **Start** soft key
2. Select **Settings > More... > Security > More... > Reset**.
3. Enter the reset password and press the **Done** soft key. The default password is 0000.
4. Press the **Yes** soft key to confirm. The phone resets and reboots itself.

Changing the Reset Password

You can change the reset password to prevent the phone from being reset by unauthorized people.

1. On the **Home** screen, press the **Start** soft key.
2. Select **Settings > More... > Security > More... > Reset**.
3. Enter the old password, then a new password, and re-enter the new one for confirmation.
4. Press the **Done** soft key.

Using Online Help

Your phone is supported by additional information available online, or on the Getting Started CD that came with your phone.

For information on:	See:
additional programs that can be installed on your phone	the supplied Getting Started CD.
connecting to and synchronizing with a PC	To view Microsoft® ActiveSync® help, click the Microsoft® ActiveSync® icon on the Windows task bar.
up-to-date information on your phone	http://www.microsoft.com/mobile/smartphone

Section 3: Synchronization

Topics Covered

- Installing Microsoft® ActiveSync®
 - Customizing Connection Settings
 - Connecting Your Phone to a Computer
 - Connecting with a PC data cable
 - Synchronizing Information
 - Customizing Synchronization Settings
-

This section describes Using Microsoft® ActiveSync®, you can synchronize data on your desktop computer with the data on your phone. Synchronization compares the data on your phone with your desktop computer and updates both your phone and computer with the latest data.

With ActiveSync, you can:

- Keep Contacts, Calendar, Tasks, or Inbox data up-to-date by synchronizing your phone with Microsoft® Outlook data on your desktop computer.
- Copy (rather than synchronize) files between your phone and desktop computer.
- Control the moment when synchronization occurs by selecting a synchronization mode.
- Select data types to be synchronized and control the amount of synchronized data.

Warning

- Microsoft® ActiveSync® synchronizes two devices using the latest data. Therefore, if you delete some specific data from the phone after synchronization, and then perform a synchronization again, the corresponding data on the computer will be deleted. Be careful not to lose important data.
- If you turn off the phone after copying files to any folders, except for the Storage folder, using Microsoft® ActiveSync®, all files in those folders will be deleted. Store important files in the Storage folder to prevent from being deleted.

Installing Microsoft® ActiveSync®

Before beginning synchronization, you must install Microsoft® ActiveSync® on your desktop computer using the supplied Getting Started CD. You can also download the latest version of ActiveSync from the Microsoft web site.

<http://www.microsoft.com>

1. Insert the Getting Started CD into the CD-ROM drive of your desktop computer. Alternatively, double-click the downloaded Microsoft® ActiveSync® installer.

2. Follow the instructions on the screen for installing Microsoft® ActiveSync®.

When installation is completed, the Synchronization Setup Wizard helps you to connect your phone to your desktop computer, to set up a partnership.

3. Follow the instructions on the screen.

Note: See page 48 for more information on connecting the phone and a computer.

Your first synchronization process will automatically begin when your phone is connected to the computer. After the first synchronization, take a look at Contacts, Calendar, and Tasks on your phone. You will notice that your information has been copied to the phone.

Customizing Connection Settings

To establish a connection between your computer and the phone, you must enable the connections you want to use in the ActiveSync® program. By default, all connections are enabled.

1. From the ActiveSync® window on your computer, select **File > Connection Settings...**
2. Change the connection settings.



3. Click OK.

Connecting Your Phone to a Computer

To connect the phone to your computer, you can choose one of the following ways:

- Using a PC data cable
- Using a Bluetooth connection

Connecting with a PC data cable

Connect one end of the PC data cable to the jack on the left side of the phone and the other end to the USB port on your computer.

Note: USB mode of your phone must be set for Microsoft® ActiveSync®. Press the **Start > Settings > Connections > USB**. Then change the mode.

The connection is established and the Microsoft® ActiveSync® window appears. The synchronization automatically begins.

Notes: When an error occurs in a USB connection, activate the DHCP Client service, or deactivate the firewall or VPN environment.

USB hubs and laptop docking stations have not exhibited consistent stability with Windows[®] Mobile 5 powered devices and ActiveSync[®]. You can connect the device to the PC USB ports if you experience connection drops or inability to connect through a USB hub or docking station.

Connecting via Bluetooth

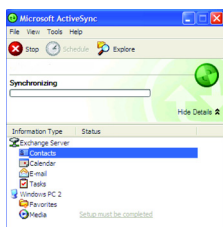
1. On the **Home** screen, press the **Start > Settings > Connections > Bluetooth > Bluetooth**. Press the **OK** key.
2. To enable Bluetooth on this device, press the **OK** key in the **Turn on Bluetooth** field.
3. To **Make this device visible to other devices** press the **OK** key.
4. Press the **Done** soft key.
5. To connect a device, click the **Menu** soft key and select **Devices**. Select **Add new device...** to search for a new Bluetooth-compatible devices.
6. Select your Bluetooth-compatible computer to pair the phone with the computer.
7. Enter a Bluetooth password and press the **Next** soft key. This password is used just once and you do not need to memorize it.
When you enter the same password on your computer, pairing is finished.
8. Enter a display name for the computer and press the **Next** soft key.
9. Check the services you want to use and press the **Done** soft key.

Note: ActiveSync® must be checked on the service list. If **Serial** is available, instead, select it and make sure that a correct Bluetooth COM port is selected from the Connection Settings on the PC ActiveSync®.

10. Press the **Done** soft key.

Synchronizing Information

To begin synchronization, connect your phone to your computer. For more information on connecting the phone and the computer, see page 48. The Microsoft® ActiveSync® window on your computer automatically appears and synchronization starts.



Once the synchronization is completed, the phone stays connected to the computer. If any change is made, Microsoft® ActiveSync® automatically will begin synchronization. To begin synchronization, press the **Sync** soft key in Microsoft® ActiveSync® on your phone. You can open the phone's file directory by clicking **Explore** from the Microsoft® ActiveSync® window. You can then copy files quickly and easily from the phone to the computer, or vice versa.

Note: To synchronize Bluetooth devices with a compatible computer, the computer must have the Bluetooth stack for Windows XP Service Pack 2.

Customizing Synchronization Settings

You can customize various setting options for synchronization with a computer and a server, and set the synchronization schedule.

First, you must terminate the connection between your phone and computer. Disconnect the PC data cable or remove the phone from the Bluetooth range.

Changing PC Settings

1. In ActiveSync® on your phone, press the **Menu > Options**.
2. Highlight **Windows PC**.
3. Press the **Menu > Settings**.
4. Change the computer name, set how to handle a data conflict between the phone and computer, and set a event logging type.
5. Enter the selecting in the **If there is a conflict** and **Event logging** fields.
6. Press the **Done** soft key.

Note: For more information on the conditions that must be met on the computer and how to change synchronization options, see Microsoft® ActiveSync® Help.

Setting Server Synchronization

You can synchronize information automatically as items arrive only if your company is running Microsoft Exchange Server with Exchange ActiveSync®.

Configuring an Exchange Server connection

1. In ActiveSync on your phone, press the **Menu** soft key and select **ConfigServer**.
2. Enter the server address and select **This server requires an encrypted (SSL) connection** to use a SSL protocol for server access.
3. Press the **Next** soft key.
4. Enter your Microsoft Exchange user name, password, and domain name.
To save the password for subsequent accesses, select **Save password**.
5. Press the **Next** soft key.
6. Select data types to be synchronized.
7. When you have finished, press the **Finish** soft key.

Changing the Synchronization Schedule

You can schedule synchronization with the Microsoft® Exchange Server on two separate times. Use the peak time schedule to synchronize during working hours or other times when you experience higher mail volumes. Use the off-peak time schedule to synchronize during times when you experience lower mail volumes.

1. In ActiveSync® on your phone, press the **Menu** soft key and select **Schedule**.
2. Set each option:

- To synchronize periodically during peak times, select a frequency of synchronization in the **Peak times** field. Choose from the available options.
 - To synchronize periodically during off-peak times, select a frequency of synchronization in the **Off-peak times** field. Choose from the available options.
 - To use the peak time and off-peak time setting while roaming, select **Use above settings when roaming**.
 - To synchronize each time you send an e-mail, select **Send outgoing items immediately**.
 - To set the days and hours for peak times, press the **Menu** soft key and select **Peak Times**.
3. When you have finished, press the **Done** soft key.

Section 4: Call Functions

Topics Covered



- Turning the Phone Functions On and Off
 - Using the Dialling Screen
 - Making a call
 - Advanced Calling Features
 - Customizing Your Phone Functions
-

This section explains all of the call functions provided by your phone.


Turning the Phone Functions On and Off

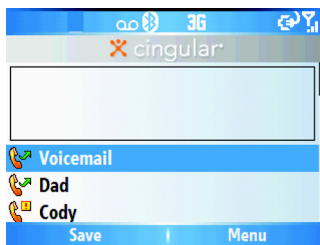
You can choose to turn off the phone functions and just use the PDA functions at any time and then turn it back on when you want.

Note: In many countries you may be required by law to turn off the phone functions while on a flight. To turn off the display of your phone does not actually turn off the phone functions; you must turn off your wireless connection to your operator's network.

To turn off the phone functions, short press  and select **Wireless Manager**. Then select **Phone** to set it to **Off**.  appears on the top right corner of the screen. To turn back on the phone functions, select **Phone** to set it to **On** from the **Wireless Manager** screen.

Using the Dialling Screen

When you press , the Dialling screen opens. You can view the most recent calls you have dialed, received, and missed on the screen.




When you enter a digit, the Dialling screen lists all of the numbers containing the entered digit in Contacts

and Call History, as well as the phone number assigned to the corresponding speed dial key.

Making a call

You can make a phone call using the number keypad.

To make a voice call:


1. On the **Home** screen, enter a number including an area code.
2. Press  to make a call.

When a call is connected, the call duration displays.

During a call, you can use several call options.

To adjust the earpiece volume during a call, press


 to increase or decrease the volume level.

3. To end the call, press .

Advanced Calling Features

You can make a call from Contacts, Speed Dial, and Call History.

Making a call from Contacts


1. On the **Home** screen, press the **Contacts** soft key. You can also press the **Start** soft key and select **Contacts**.
2. Select a contact card from the contact list.
3. Scroll to the number you want and press  for a voice call.

Making a call from Speed Dial

Speed Dial is a list you can create of often-dialed numbers.

By memorizing the position on the Speed Dial list, you can dial the number simply by entering that number of the Speed Dial key. The phone number assigned to the key appears on the Dialling screen.

Alternatively, if you do not remember the position of a number, access the Speed Dial list:


1. On the **Home** screen, press the **Start** soft key and then the **More** soft key.
2. Select **Applications > Speed Dial**.
3. Scroll to the number you want and press  for a voice call.

Making A Call From Call History


1. On the **Home** screen, press the **Start** soft key.
2. Select **Call History**. The recent call list appears.


Note:  is for incoming calls,  is for outgoing calls, and  is for missed calls.

To view the calls categorized by call type, press the **Menu** soft key, select **Filter**, and select a category from the pop-up list.

3. Scroll to the number you want and press  for a voice call.

Making an International Call


1. Press and hold until the  + sign appears. The + replaces the international access code.
2. Enter the full phone number you want to dial. It includes the country code, the area code (without the leading zero), and the phone number.

3. Press .

Note: You can set the country or dialling code to be added before the number when dialling.

Making an Emergency Call

Your phone provides the emergency number **112**. This number can normally be used to make an emergency call in any country, with or without a SIM card inserted, if you are within a mobile phone network's service area.





Enter the emergency number **112** and press .

Notes: Some service providers may require a SIM card to be inserted, and in some cases the PIN to be entered as well.

In some cases, other emergency numbers may also be accessed. Your service provider may save additional local emergency numbers on the SIM card.

Answering or Ignoring a Call

When a call comes in and the phone rings or vibrates, depending on the ringer setting:

- Press the **Answer** soft key or the  to answer the call.
- Press the **Ignore** soft key or press the  to reject the call. You can also press and hold  /  to reject the call.



Note: If you reject a call, the busy tone is sent out. Depending on your service provider, the caller may be guided to your voicemail server.

Options During a Call

Your phone provides a number of control functions that you can use while a call is in progress.

Answering a second call

If a person is trying to call you when you are talking on the phone, a notification window will pop out.

1. Press the **Answer** soft key or  to answer the second call and put the first on hold.
2. To switch back and forth between the two callers, press the **Swap** soft key.
3. To end the second call and go back to the first, press the **End** soft key or press .

Using In-call options

During a call, you can access various options by pressing the **Menu** soft key.

For a voice call, the following options are available:


- **Hold/Unhold:** places the current call on hold or unhold.
- **Mute/Unmute:** turns off the microphone so that the person with whom you are speaking cannot hear you, or turns it back on.
- **Speakerphone on/off:** turns on/off the speakerphone mode to talk and listen to the phone a short distance away.
 - **Turn Hands-free on/Turn Hand-free off:** switches the current call to the connected hands-free car kit or headset, or switches it back to the phone.
 - **Conference:** joins the two or multiparty call into a conference call.
- **Contacts:** opens the contact list.
- **Save to Contacts:** saves the phone number of the person with whom you are speaking.
- **View Calendar:** opens the calendar.
- **Call History:** opens the call history list.
- **In Call options during a multi party call:**

- **Swap:** switches back and forth between the two callers.
- **Mute/Unmute:** turns off the microphone so that the person with whom you are speaking cannot hear you, or turns it back on.
- **Speakerphone on/off:** turns on/off the speakerphone mode to talk and listen to the phone a short distance away.
- **Turn Hands-free on/Turn Hands-free off:** switches the current call to the connected hands-free car kit or headset, or switches it back to the phone.
- **Conference:** joins the two or multiparty call into a conference call.
- **Contacts:** opens the contact list.
- **Save to Contacts:** saves the phone number of the person with whom you are speaking.
- **View Calendar:** opens the calendar.
- **Call History:** opens the call history list.

Call-related features

Checking your voicemail

The first speed dial location is assigned to your voicemail box by default. When you insert your SIM card into the phone, it automatically detects and sets as default the voicemail center number of your mobile service provider.

To check your voicemail, press and hold  from the Dialling screen.

Note: You can check and change the voicemail center number.

Managing the Speed Dial list

You can assign frequently-used phone numbers, e-mail addresses, or web pages in Contacts to the speed dial

location 2 through 99. The location 0 and 1 on the Speed Dial list are preset for the international call prefix and the voicemail center number, respectively.

Note: You cannot create a speed dial entry for a phone number stored on the SIM card.

Managing your Call History

Call History details all incoming, outgoing, and missed calls, and also provides a summary of total calls. It can also tell you when a call was initiated and how long it lasted.

To open Call History

On the **Home** screen, press the **Start** soft key and select **Call History**. A list of all calls appears.

If necessary, select the category of the call history to be displayed by pressing the **Menu** soft key and selecting **Filter**.

Calls are categorized as below:

- **No Filter:** shows all calls made to and from the phone in chronological order.
- **Missed Calls:** shows only calls that were not answered.
- **Incoming Calls:** shows only calls made to the phone.
- **Outgoing Calls:** shows only calls made from the phone.

Viewing details of calls

- To save a phone number of a call to Contacts, scroll to the call you want and press the **Save** soft key.
- To view contact information, scroll to a contact, press the **Menu** soft key, and select **Find Contact**.

- To send an SMS message, press the **Menu** soft key and select **Send Text Message**.
- To send an e-mail message, press the **Menu** soft key and select **E-mail**.
- To delete an individual call, press the **Menu** soft key and then select **Delete**. To delete all calls, select **Delete List**.

Viewing call timers

In Call History, you can view the duration of your calls. This option is convenient for estimating your usage.

1. On the **Call History** screen, press the **Menu** soft key and select **View Timers**.

You can view the following details: Last call, All calls, Incoming calls, Outgoing calls, Roaming calls, Data calls, Last reset and Lifetime calls.

2. Press the **Done** soft key.

You can easily erase the call time records at any time, except for **Lifetime calls**, by pressing the **Menu > View Timers > Menu > Reset Timers**.

Customizing Your Phone Functions






You can personalize the settings of the phone functions, the services you have, and the network to which you have connected.

Accessing the Phone setting options

1. On the **Home** screen, press the **Start** soft key.
2. Select **Settings > Phone**.
3. Select a setting menu, and then set each option.
4. When you have finished, press the **Done** soft key.

Available setting options

All calls

- **Call Options:** You can customize settings related to call functions, such as an answering option, voicemail and SMS access.
- **Any key answer:** When this option is activated, you can answer incoming calls by pressing any key, except for , , , / .
- **Show SIM contacts:** With this option is activated, the contact cards stored on the SIM card display in Contacts.
- **Phone number:** Check your phone number.
- **Voice mail number:** When you insert your SIM card into your phone, the phone automatically detects and sets your voicemail number.
- **Text messages service center:** When you insert your SIM card into your phone, SMS accesses the number by default. If not, you can manually enter the numbers obtained from your service provider.
- **Country code:** You can enter a country code used will be automatically added before a phone number when dialling.
- **Area Code:** You can enter an area code. The code used will be automatically added before a phone number when dialling.
- **Caller ID:** When you place a call, your phone number can be displayed to or hidden from the person to whom you are calling. Using this option, you can enable or disable the display of your caller identification.
- **Channels:** This option allows you to set the broadcast message receipt and set up broadcast channels from which you want to receive broadcast messages.
 - **Enable channels:** Select to enable the receipt of broadcast messages.

- **Receive channel list:** Select to receive a list of all available broadcast channels from the network.
- **Language:** Select your preferred languages to display broadcast messages. To edit the channel list, press the **Menu** soft key and select **Edit Channels**. Then press the **Menu** soft key and select the options for adding, deleting or editing channels.
- **Fixed Dialing:** When this option is activated, your phone allows outgoing calls only to the limited set of phone numbers. You can call only those numbers that are included in the Fixed Dialling Number list or which begin with the same digit(s) as a phone number on the list.
- **Networks:** You can set the phone to automatically select a network when you are roaming out of your service area, or find and select the network you want. Press the **Menu** soft key to access the following options:
 - **Find a New Network:** Search for all available networks. You can start searching when the phone is out of your service area.
- **Cancel:** Exit the **Networks** menu.

Voice Calls

- **Call Waiting:** This service allows you to receive another call while you have a call in progress.
- **Call Forwarding:** This network service allows you to forward your incoming calls to another phone number.
 - **Always:** All calls are forwarded.
 - **Busy:** Calls are forwarded when you are on the phone.
 - **No Reply:** Calls are forwarded when you do not answer.
 - **Unreachable:** Calls are forwarded when your phone is turned off or your phone is out of the service area.
 - **Data Calls:** All data calls are forwarded.

Own Numbers

You can store your phone numbers with descriptive names. Changes made with this options does not affect the actual subscriber number of your SIM card.

Section 5: Menu Navigation

Topics Covered



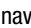
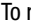

- Menu Navigation
 - Using Shortcuts
-

This section explains the menu navigation for your phone. It also includes an outline of all the available menus associated with your phone.

Menu Navigation

Menus and sub-menus can be accessed by scrolling using the Navigation keys or by using the shortcut keys.

Accessing a Menu Function by Scrolling

1. On the **Home** screen, press the **Start** soft key and then the **More** soft key.
2. Scroll using the Navigation keys to reach a main menu **Settings** for example. Press the  key to enter the menu.
3. If the menu contains sub-menus, **Settings** for example, you can access them by highlight the option and by pressing the  key. If the menu that you have selected contains further options, repeat this step.
4. To scroll through the menus, press the **Up** or **Down** navigation key. Press the  key to make your selection.
5. To return to the previous menu level, press the  key.
6. To exit the menu without changing the settings, press the  key.

Using Shortcuts

Numbered menu items, such as menus, sub-menus, and options can be quickly accessed by using their shortcut numbers.

Note: To Continue to use shortcut keys, change this option to **List** in the **Display > Start menu style option** and press the **Done** soft key.

Accessing the Start Menu Style Setting menu (in List not Grid menu option).

1. Press the **Start > More > More** soft key.

2. Press the **(U)** key for **Settings**.
3. Press the **(E)** key for **Phone**

Menu Outline

The following list shows the menu structure and indicates the number assigned to each option.

- 1: Messaging
 - 1: SMS/MMS
 - 2: Outlook E-mail
 - 3: New Account...
- 2: Contacts
- 3: Calendar
- 4: ActiveSync
- 5: Cingular Music
 - 1: 1 Windows Media
 - 2: 2 Shop Music
 - 3: 3 MusicID
 - 4: 4 Streaming Music
 - 5: 5 Music Videos
 - 6: 6 The Buzz
 - 7: 7 Community
 - 8: 8 Music Apps
- 6: Cingular Video
- 7: MEdia Net
- 8: Cingular Mall
 - 1: 1 Shop Tones
 - 2: 2 Shop Games
 - 3: 3 Shop Graphics
 - 4: 4 Shop Multimedia
 - 5: 5 Shop Application
 - 6: 6 MEdia Net Home
- 9: IM & Email
 - 1: Get IM
 - 2: GetGood
- 10: Camera

- 11: Call History
- 12: Organizer
 - 1: Alarms
 - 2: Calculator
 - 3: D-Day
 - 4: Notepad
 - 5: Smart Converter
 - 6: Stopwatch
 - 7: Tasks
 - 8: Voice Notes
 - 9: World Clock
- 13: My Stuff
 - 1: My Pictures
 - 2: My Videos
 - 3: Notes
 - 4: My Documents
 - 5: My Device
 - 6: Storage Card
- 14: Games
 - 1: Bubble Breaker
 - 2: Solitaire
- 15: Internet Explorer
- 16: Applications
 - 1: Download Agent
 - 2: File Explorer
 - 3: Java
 - 4: Picxel Viewer
 - 5: RSS Reader
 - 6: Smart Search
 - 7: Speed Dial
 - 8: Task Manager
- 17: Settings
 - 1: Phone
 - 1: All Calls
 - 2: Voice Calls
 - 3: Own Numbers
 - 4: SDN

- 2: Sounds
 - 1: Ring Tone
 - 2: Other Sounds
- 3: Display
 - 1: Home Screen
 - 2: Star Menu Style
 - 3: Dialer
- 4: Profiles
 - 1: Normal
 - 2: Silent
 - 3: Meeting
 - 4: Outdoor
 - 5: Automatic
 - 6: Headset
 - 7: More...
 - 1: Speakerphone
- 5: Date and Time
- 6: Connections
 - 1: Wireless Manager
 - 2: Beam
 - 3: Bluetooth
 - 4: USB
 - 5: Dial-up
 - 6: GPRS
 - 7: More...
 - 1: Proxy
 - 2: VPN
- 7: More...
 - 1: Security
 - 1: Device Lock
 - 2: Enable SIM Lock
 - 3: Enable SIM PIN
 - 4: Change PIN2
 - 5: Certificates
 - 1: Personal
 - 2: Root
 - 6: Change Reset Password

- 7: More..
 - 1: Reset
 - 2: ACL Service
- 2: Remove Programs
- 3: Power Management
- 4: Key Settings
 - 1: Side Key Settings
 - 2: Home Screen RSK
- 5: Text Input Mode
- 6: Regional Settings
- 7: More..
 - 1: Owner Information
 - 2: Accessibility
 - 3: About
 - 4: Version
 - 5: Error Reporting

Section 6: Cingular Music

Topics Covered

- Windows Media Player®
 - Shop Music
 - MusicID
 - Streaming Music
 - Music Videos
 - The Buzz
 - Community
 - Music Apps
-

Cingular Music offers several different application in which you can listen to access and buy, record, identify and join music communities.

Windows Media Player®

Your phone is equipped with Microsoft® Windows Media Player® 10. With Windows Media Player®, you can play Windows Media Audio, Windows Media Video, and MP3 audio files that are stored on your phone, on a memory card, or on the Web.

To open Windows Media Player:

1. On the **Home** screen, press the **Start > Cingular Music > 1 Windows Media**.
2. Press **OK**.

Preparing media files

You can copy media files from your desktop computer to the phone using the Windows Media Player or Microsoft® ActiveSync®. You can also copy media files using a microSD storage card.

Note: If you have stored too many files in memory, the operation speed of the system slows down. Using an optional microSD storage card helps you clear up this problem and lets you enjoy more music files.

About DRM, licences, and protected files

Some digital media files, such as songs downloaded from online stores, are encrypted to prevent the files from being unlawfully distributed or shared. Content providers use a technology called Digital Rights Management (DRM), to encrypt the files. During the encryption process, the content provider creates a licence which specifies how and when the file can be used.

For example, a content provider could create a licence that allows you to play a certain file on your computer, but not on your phone. Or, a licence that allows you to play a certain file on your phone, but only for a month, or perhaps only a certain number of times. Files that have licences associated with them are called protected files.

Copying media files using ActiveSync

1. Connect your phone to a computer and start synchronization.
2. Open the file directory on the phone by clicking **Explore** from the Microsoft® ActiveSync® window.
3. Drag the media files you want to copy and drop them into a folder.


Windows Media Player automatically retrieves the media files from the folder where the files are copied and you can search them from the Library screen. If the media files do not appear in Library, update the library by pressing the **Menu** soft key and selecting **Update Library**.

Copying media files using the Windows Media Player program on your computer

You can use the desktop Windows® Media Player® to copy media files. Using the desktop Windows® Media Player® ensures that licences are copied with protected files.

Make sure that you have Windows® Media Player® 10 or later versions on your desktop computer. Depending

on the version of your Windows® Media Player®, the procedure to copy files may vary.

1. Connect your phone to the desktop computer and start synchronization.
2. Open Windows® Media Player® on the computer.
3. Click the **Sync** tab.
4. Click **Edit Playlist**.
5. Select the media files you want to synchronize from the left pane of the window.
6. Click **OK**.
7. Select the saving location from the right pane.
8. Click  to select the quality level you want and click **OK**.
9. Click **Start Sync**.

The selected files are converted and copied to the location you selected in step 7.

Using libraries

A library is a file list provided by Samsung Player to retrieve media files in the phone's memory. To access libraries, press the **Menu** soft key from the player screen and select **Library**.

The library screen contains categories, such as My Playlists, My Music, and My Videos. From the library screen, you can sort your content by criteria, such as artist name, album title, or genre.

On the library screen, you can use the following options by pressing the **Menu** soft key:

- **Queue Up:** adds the selected file to the end of the current play list.

- **Delete from Library:** deletes the selected file or all files from the library.
- **Now Playing:** opens the current play list.
- **Library:** Allows you to select the library that you want to view; for example, the library of files stored on your phone or on the memory card.
- **Update Library:** adds new files to the library by searching your phone or a memory card.
- **Open File:** allows you to find and play files that are stored on your phone or a memory card, but those are not in the library.
- **Open URL:** allows you to specify a URL address for a streaming service.
- **Properties:** displays information about the selected file.
- **Player:** closes the Library screen and displays the player screen.

Playing music and video files

If you have copied media files to your phone's memory or memory card, you can play them from Media Player.

Playing media files from a library

1. On the library screen, if necessary, press the **Menu** soft key, select **Library**, and select the memory from which you want to retrieve files.
2. Press the **Menu** soft key and select **Update Library**.
3. When libraries have been updated, press the **Done** soft key.
4. Select a category.
5. Scroll to the library you want to play and press the **Play** soft key.

If the file does not appear in a library, on the Library screen, press the **Menu** soft key and select **Open File**. Then select the file you want to play.

The player screen appears and the selected file plays.

Use the following options during playback:

- To adjust the Windows Media volume, press the **Up** or **Down** key. You can view the volume level on the screen.
- To adjust the earpiece volume, press ▲ / ▼.
- To move backward in a file, press and hold the **Left** key.
- To move forward in a file, press and hold the **Right** key.
- To access the next file, press the **Right** key.
- To access the previous file, press the **Left** key.
- To pause or resume playback, press **OK**.
- To play the files in the play list randomly or repeatedly, press the **Menu** soft key and select **Shuffle/Repeat >** an option.
- To view the video on a full screen, press the **Menu** soft key and select **Full Screen**.
- To stop playback, press the **Menu** soft key and select **Stop**.

Playing media files on a network

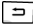


1. On the **Library** screen, press the **Menu** soft key and select **Open URL**.
2. Enter a URL address in the **URL** field, or scroll to one of the URL address that you have used from the History field.
3. Press the **OK** soft key.

Note: To play media streaming, you must be connected to a network. For more information on creating a remote connection between your phone and a network.

Setting up a play list

You can add media files on the Library screen to a temporary play list. It lists the currently playing file, as well as any files that have been queued up to play next.

Creating a play list

1. On the library screen, select the category you want and scroll to the file you want to play.
If the file does not appear on the list, press the **Menu** soft key and select **Update Library**.
2. Press the **Menu** soft key and select **Queue Up** to add the file to the play list.
3. Repeat steps 1 and 2 to add more files.
4. Press  to return to the player screen or **Menu > Player**.
5. Press  or  to start playing the files.
6. To save the play list, press the **Now Playing** soft key and then the **Menu** soft key, and select **Save Playlist**.
7. Enter the list name and press the **Done** soft key. The list is saved in the My Playlists library.

Opening the play list

On the player screen, press the **Now Playing** soft key. You can use various options by pressing the **Menu** soft key.

Editing the play list

- To change the play order, press the **Menu** soft key and select **Move Up** or **Move Down**.
- To delete the selected files, press the **Menu** soft key and select **Remove from Playlist**.

- To clear the play list, press the **Menu** soft key and select **Clear Now Playing**.

Changing the Window Media Player Settings

You can customize the appearance and functionality of Windows Media Player. On the player screen, press the **Menu** soft key and select **Options**.

You can use the following options:

- **Playback:** Select the options for playback. You can select the way time is displayed on the player screen, or whether or not to pause playback when you launch another program, and resume playback after a phone call.
- **Video:** Select the viewing options for playing videos on a full screen.

Note: If there is a problem while playing MP4 files, deselect the **Shrink to fit window** option. The problem occurs because the file has been resized.

- **Network:** Change the connections speed and protocol for playing music and streaming video.
- **Library:** Select whether the player screen or the Library screen is displayed when you open Windows Media Player.
- **Skins:** Change the appearance of the player screen by selecting a new skin.
- **Buttons:** Assign Windows Media Player functions to the keys on your phone to quickly control playback without having to use the menus.

Shop Music

Use the Shop Music feature to browse the internet for music and Ringtones. Access the MEdia Net menu and enter a song or ringtone. A popup note displaying that information entered from this site appears and you

select **Yes** or **No** to continue. Use the online screen instructions to continue.

1. On the Home screen, press the **Start > Cingular Music > 2 Shop Music**.

MusicID


MusicID is an application which uses the onboard microphone to analyze a song sample and then compare it to a remote database of songs. Once the application completes the analysis of the song sample, it then provides you with the name of the song, artist and album art as well as opportunities to buy related content.

1. On the Home screen, press the **Start > Cingular Music > 3 MusicID**.
2. Press **OK**.
3. Highlight **MusicID** and press the **Select** soft key or the **OK** key. You are then presented with a list of ID options:
 - **ID song!**: begins the analysis of the song being sampled through the handset's microphone.
 - **manage IDs**: provides a list of recently identified song and allows you to obtain information about the song, delete the song, or send the MusicID as a link to another phone number.
 - **help me out**: provides you with on screen descriptions of several key MusicID features.
 - **exit**: allows you to exit the application and return to the main Cingular Music menu.

To exit the application at any time, simply press the  key.



Using ID song!

1. Highlight **ID song!** and press the **OK** key.
2. Place the handset's microphone up to the source of the song, which can be from either a radio, stereo, or headset. The handset then begins to analyze the audio signal. If a song match is found, the screen displays the Artist Name, Track Title, and Album cover art.
3. To purchase the song (with ringtone and wallpaper if available), highlight **get**, and press the **OK** key.

4. To share the song ID with another user, highlight **Share ID** press the  key. Enter the recipient's phone number and press the **ShareID!** soft key. Within a short time they will receive a message containing a Music ID link to the song.
5. If the song can not be found, the handset displays a "Sorry, No Match Try Again!" message. Press the **newID!** soft key and try analyzing the song again.


To exit the application at any time, simply press the  key.

Using Manage IDs

1. Highlight **Manage IDs** and press the  key. The screen displays a list of the most recent successful song IDs which were made.
2. Highlight a song and press the **Options** soft key.
3. Highlight one of the following options and press the  key.
 - **ID Info**: displays the Artist Name, Track Title, and Album cover art of the identified song.
 - **Delete ID**: deletes the selected song from the list of identified songs.
 - **New ID!**: begins the song analysis process again. Hold the microphone to the song source and wait for analysis.


To exit the application at any time, simply press the  key.


Getting Help with MusicID

1. Highlight **help me out** and press the  key to select a topic. The screen displays a list of helpful topics related to the musicID application. These topics cover:
 - **IDing a Song**: provides information about the analysis process.
 - **Recommendations and More!**: describes the process following the successful identification of a song. You can choose to purchase the song and wallpaper (if available) or send the musicID as a link to another phone number.
 - **Subscription**: provides details about the general usability and monthly term information.
 - **About MusicID**: provides information about the Music ID software version.

Exiting from the MusicID Application

There are two ways to exit from the MusicID application:

1. Highlight **exit** and press the  key to select a topic.



- Exit the application at any time by simply pressing the  key.

Streaming Music



This service allows you to stream commercial free music through your handset.

Note: Since this product uses a large amount of data in its stream process, you should note that you are responsible for all data charges incurred. It is recommended that you subscribe to a MEdia Max data bundle so that you are not charged for data overages.

Note: XM Radio does not work with Bluetooth. Periodically, the application will ask the customer to confirm they are still listening to the stream.

- On the Home screen, press the **Start > Cingular Music > 4 Streaming Music**.
- Press .
- Highlight **Streaming Music** and press the  key. The XM Radio menu displays. Follow the onscreen instructions to understand applicable charges and options.

Streaming a Music Channel

- Press the **OK** soft key to accept the terms of the trial period. You have only a few days to use the service before the trial period expires. If at any time you wish to purchase a subscription to the XM Radio service, press the **Buy** soft key and follow the on screen prompts.
- Use the **Up** or **Down** Navigation key to highlight a radio station category from the guide list and press the  key.
- Use the **Up** or **Down** Navigation key to highlight a specific radio channel and press the  key to begin the stream to your phone.

Music Videos

The Music Videos homepage is a component of the Cingular Video service. This page provides you with links to some of the most popular multimedia content.

- On the Home screen, press the **Start > Cingular Music**

> 5 Music Videos.

2. Press **OK**.

You are then taken to your CV Music homepage. This homepage provides you with several sections of accessible content:

- **Music:** allows you to choose from some recently uploaded video clips from the Music Choice channel, which can include news, cuts, and ringtone reports.
- **Music Channels:** provides some general content categories from which to begin searching for media: Cingular Sounds Live, Music Choice Premium, Music Videos, MTV, VH1, CMT, and Hip Hop Official.
- **Entertainment:** exits from the Music Videos section of the homepage and launches an entertainment page which provides further streaming multimedia content.
- **Cingular Video:** exists from the Music Video application and launches the Cingular Video homepage.
- **MEdia Net:** exists from the Music Video application and launches the MEdia Net homepage.
- **Help:** provides basic on-line assistance which answers most of the common issues users come across while using this feature.

3. Highlight the desired media clip or select from one of the available categories and press the **OK** key.

Music Video Options

The options for the Music Video page are identical to those options provided for within the Cingular Video homepage.


From the main Music Video homepage, press the **Options** soft key.

Viewing a Video Clip

1. Use the **Up** or **Down** Navigation key to highlight the video clip and press the **Select** soft key or the **OK** key.
2. After the stream has been buffered into memory, you can choose to either Pause or play the content. Pressing the **OK** key toggles the **Play** and **Pause** functionality.

The Buzz

This service allows you to navigate through Top 20 chart songs (in a variety of categories). Other features of this service include streaming entertainment news about your favorite music artists, access to an artists main page (containing discographies, ringtones, concert dates, etc.), concert information, games, and setup options for your own personal billboard notifications.

1. On the Home screen, press the **Start > Cingular Music > 6 The Buzz**.
2. Press **OK**.
3. Highlight **The Buzz** and press the **OK** key.
4. Press the **Trial** soft key to accept the terms of the trial period. You have only a few days to use the service before the trial period expires. If at any time you wish to purchase a subscription to this service, press the **Buy** soft key and follow the on screen prompts.
5. Enter an area code, phone number (without dashes), and Zip code into the appropriate fields on the Customize screen. Use the **Up** or **Down** Navigation key to switch between fields.
6. Press the **Confirm** soft key to accept and save your information.
7. Once the phone number has been successfully registered, press the **OK** soft key to continue onto the main Billboard mobile menu where you are given a list of categories to choose from:
 - **CHARTS**: provides you with a top 20 list of popular Ringtones, and tunes such as R&B/Hip Hop, Rock, Pop, Latin, Country, and Rap.
 - **NEWS & REVIEWS**: provides you with links to some of the latest news about your favorite artists.
 - **ARTISTS**: features a personalized artist web page for an available artist which includes a bio, discography info, ringtones, tour dates, etc.
 - **CONCERTS**: allows you to search for a concert by using either the artist name, venue, type, or city/state/zip information.
 - **GAMES**: allows you to use your keypad to play an entertainment-based guessing game by entering in names, dates, and places.
 - **MY BILLBOARD**: allows you to refine your Billboard mobile experience by configuring your text message preferences, personal settings, and alerts.
8. Exit the application at any time by simply pressing the  key.

Music Community

This Community is a place where you can find a listing of various fan sites that provide sound clips, wallpapers, bios, discographies, and other information about an artist.

1. On the Home screen, press the **Start > Cingular Music > 7 Community**.
2. Press **OK**.
3. Use the **Up** or **Down** Navigation key to select a fan site and press the **OK** key. These pages can contain the following information:
 - **Wallpapers**: provides you with color graphic files which can be used as a wallpaper on your handset. Highlight an entry and press the **OK** key.
 - **Photos**: allows you to view some artist-specific photos. Use the **Next** and **Back** buttons to navigate through these pages.
 - **Bio**: provides a biographical description of the artist/band.
 - **Artist Info**: provides more specific group member information.
 - **Discography**: provides a description of the artist's albums and their corresponding release dates.
 - **Tour Dates**: provides a listing of the artist's current tour dates.

To exit the application at any time, simply press the  key.

Music Apps

The Music Apps page will remain this way until Motricity supports downloading .cab & J2ME applications to the Windows Media platform.

1. On the Home screen, press the **Start > Cingular Music > 8 Music Apps**.
2. Press **OK**.
3. Highlight **Music Apps** and press the **OK** key.

Section 7: Cingular Video

Topics Covered


- Media Clip Options
 - Media Clip Options
 - Using the Video Categories
 - Customizing Cingular Video
 - My Purchases
 - Parental Controls
-

Your phone is equipped with a WAP (Wireless Application Protocol) browser which allows you to access Internet and then upload media files directly to your phone. These media files are displayed using the built-in Media Player. Cingular Video (CV) is a media service which allows you to not only navigate to your favorite web sites but stream media content (Weather, News/Sports highlights, etc.) directly to your phone.

1. On the Home screen, press the **Start > Cingular Video**.
2. Press **OK**.
3. You are then taken to your default Cingular Video homepage.

This homepage provides you with several sections of accessible content:

- **Address Bar:** allows you to enter a new address

- **Favorites:** allows you to choose from some recently uploaded video clips from among the following media providers: CNN, ESPN, HBO Mobile Preview, or Access Hollywood.
 - **Add to Favorites:** allows you to add media websites to the Favorites list.
 - **Video Categories:** provides some general content categories from which to begin searching for media: TV to Go, Entertainment, Sports, News & Weather, HBO Mobile, and Premium Channel.
 - **Customize Cingular Video:** allows you to access the Cingular Video Settings menu where you can configure most of the settings associated with Cingular Video.
 - **Parental Control:** provides you with settings which can be configured to restrict certain media content from being displayed on the phone.
 - **MEdia Net:** exits from the Cingular Video application and launches the MEdia Net homepage.
 - **Help:** provides basic on-line assistance which answers most of the common issues users come across while using this feature.
4. Highlight the desired media clip or select from one of the available categories and press the **Select** soft key or the  key.

Media Clip Options

With the media currently active on the phone (either playing or paused), press the **Menu** soft key to open a list of the following streaming media options.

Library

This feature launches the Windows Media Library showing My Music, My Videos, My TV, My Playlists, and Now Playing.

Play/Pause

This feature allows you to toggle the state of the current video between being Paused or Resuming playback.

Stop

The feature stops the current media, exits the media player and returns you to the main Cingular Video homepage.

Shuffle/Repeat

This feature allows you to toggle between the shuffle or repeat options for your videos you have played and saved to your device.

Full Screen

This feature changes the screen content to remove or include the information regarding the soft key menu options or to display the video only. Press the **OK** key to switch between screen options.

Options

The following options are available:

- Playback:
 - Show time as: set the show time elapsed or remaining.
 - Set the Pause playback while using another program to stop the video if you launch another program.

- Resume playback after a phone call to continue the video after your phone call is ended.
- Video
 - Play video in full screen: choose from Never, Only when oversized, or always.
 - Scale to fit window: allows you to fit the picture to the screen.
- Network
 - Internet connection speed: choose the internet connection speed to download the videos.
 - Detect connection speed: sets the default speed the data connection allows.
 - Protocol: Select the UDP or TCP protocol, or the Port number.
- Library: allows you to start the player from the library screen
- Skins: allows you to select the screen display (Skin) for your video clips. Use the Right or Left Navigation key to make your selection. Press **OK** to make your selection.
- Buttons: displays the buttons and their options for the media clip application.

Properties

Displays a Media Player window which gives file specific information such as title, and Duration.

Settings

This feature pauses the content and navigates you to the Player Settings menu where you can configure the Media Player's Volume setting.

1. Use the **Up** or **Down** Navigation key to increase/decrease the current volume setting for the player while in Portrait mode. Use your **Left** or **Right** Navigation key to increase/decrease the current volume setting for the player while

- in Landscape mode.
2. Press the **Save** soft key to save your changes
- or -
 3. Press the **Back** soft key to resume your media playback without saving your changes.

Cingular Video Settings

This feature allows you to configure the current server profile being used by the on-board WAP.

Using the Video Categories

This grouping of media categories provides access to an additional listing of streaming media. Where the previous Favorites list of media stream can be user edited and updated, this list of categories is defined by Cingular's homepage and can not be changed.

Viewing a Video Clip

1. From the **Home** screen, press the **Start** soft key. Highlight **Cingular Video** and press the **OK** key.
2. Use the **Up** or **Down** Navigation key to highlight the video clip from within the Favorites section and press the **Select** soft key or the **OK** key.
3. After the stream has been buffered into memory, you can choose to either Pause or play the content. Pressing the **OK** key toggles the **Play** and **Pause** functionality.

Customizing Cingular Video

Updating the Favorites List

The list of media providers which appear in the Favorites section of the Cingular Video homepage can be edited and changed by the user.

1. From the **Home** screen, press the **Start** soft key. Highlight **Cingular Video** and press the **OK** key.
2. Use the **Up** or **Down** Navigation key to highlight the **Edit** button from the upper-right of the homepage (adjacent to the **My Favorites** title) and press the **OK** key.
3. From the **Customize Cingular Video - Options** listing, highlight **Edit My Favorites** and press the **OK** key.
4. Navigate to the **Add to Favorites** section of the page and highlight one the additional streaming media channels which are not currently in your Favorites list (ex: Cartoon Network).
5. Press the **Options** soft key. Highlight **Add to Favorites** and press the **Select** soft key or the **OK** key.

Adding a Video Alert

When new media is available for upload to your phone (such as breaking news), you can set your phone to notify you of the new available content.

1. From the **Home** screen, press the **Start** soft key. Highlight **Cingular Video** and press the **OK** key.
2. Use the **Up** or **Down** Navigation key to highlight the **Customize Cingular Video** button from the bottom of the homepage and press the **Select** soft key or the **OK** key.

3. From the **Customize Cingular Video - Options** listing, highlight **My Video Alerts** and press the **OK** key.
4. Navigate to the **Add to My Alerts** section of the page and highlight one of the available services (ex: Breaking News).
5. Press the **Options** soft key. Highlight **Add to Favorites** and press the **OK** key.

My Purchases

The Cingular Video homepage can be used to shop for streaming multimedia content. The **My Purchases** section can help keep track of your purchase history and view any new resale products.

1. From the **Home** screen, press the **Start** soft key. Highlight **Cingular Video** and press the **OK** key.
2. Use the **Up** or **Down** Navigation key to highlight the **Customize Cingular Video** button from the bottom of the homepage and press the **OK** key.
3. From the **Customize Cingular Video - Options** listing, highlight **My Purchases** and press the **OK** key.
4. Highlight **Purchase History** and press the **OK** key. This provides you with an on screen listing of your “to date” purchase history for media content.
5. Highlight **My Account** and press the **Select** soft key or the **OK** key. This provides you with an on screen description of your account details.

Parental Controls

Your phone can be configured to block both purchased and streamed media content. Before filtering, you must first establish a pin/password and a contact e-mail address. Once those have been established, you can the two available filter options: **Content Filter** and **Purchase Blocker**.

- **Content Filtering** let you restrict access to inappropriate content both on and outside of MEdia Net.
- **Purchase Blocking** lets you restrict the ability to buy ringtones, downloads, games, etc., from this phone.

Setting up Parental Control

1. From the **Home** screen, press the **Start** soft key. Highlight **Cingular Video** and press the **OK** key.
2. Use the **Up** or **Down** Navigation key to highlight the **Customize Cingular Video** button from the bottom of the homepage and press the **OK** key.
3. From the **Customize Cingular Video - Options** listing, highlight **Parental Controls** and press the **OK** key.
4. Highlight the **OK** button and press the **OK** key to access the MEdia Net parental setup fields.
5. From the Parental Control Setup screen, use your keypad to enter information into the following fields: **PIN Code**, **Re-enter PIN code**, contact **email address**.
6. Use you Navigation keys to highlight the **Save** button and press the **OK** key. Allow a few minutes for your information to be received and accepted by MEdia Net. You can then use this information to activate the parental filters.

Configuring the Filters

1. From the **Home** screen, press the **Start** soft key. Highlight **Cingular Video** and press the **OK** key.
2. Use the **Up** or **Down** Navigation key to highlight the **Customize Cingular Video** button from the bottom of the homepage and press the **OK** key.
3. Highlight the **OK** button and press the **OK** key.
4. When prompted, enter the PIN and e-mail address which was registered with MEdia Net in the previous section.
5. Highlight **Content Filters** and press the **OK** key.
6. Highlight the **On** button and press the **Select** soft key or the **OK** key to toggle the On/Off state.
7. Highlight **Purchase Blocker** and press the **Select** soft key or the **OK** key.
8. Highlight the **On** button and press the **Select** soft key or the **OK** key to toggle the On/Off state.
9. Press the **Back** soft key or the **OK** key. This activates.

Section 8: Cingular Mall

Topics Covered

- Shop Tones
 - Shop Games
 - Shop Graphics
 - Shop Multimedia
 - Shop Application
 - MEdia Net Home
-

The Cingular Mall topics covered in this section are shopping for Tones, Games, Graphics, Multimedia, and Accessing the MEdia Home site.

Note: Prior to purchasing downloadable tones, graphics, games, or other applications, it is necessary to setup an e-wallet account so that with every purchase, your account can easily be debited.

Shop Tones

The **Shop Tones** menu option allows you to shop for audio tones using the built-in browser. You can download, record new, and save audio to either your **Audio** or **Music** folder. To access this menu option, use the following steps:

1. On the Home screen, press the **Start > Cingular Mall > 1 Shop Tones**.

2. Press **OK**.
3. Follow the on-screen options. The downloaded files can be stored into the **Main Memory** or **Storage Card** found within the **My Stuff (Phone)** location. Music Tone categories include:
 - Featured Artists
 - Answer Tones
 - Search for a specific audio file by name
4. Select an audio file and press the **OK** key.
5. When you are ready to purchase the audio file, press the **Buy Now** button to charge your e-wallet account and complete the transaction.

Shop Games

The **Shop Games** menu option allows you to shop for games using the built-in browser. You can download new games to your **Java** folder. To access this menu option, use the following steps:

1. On the Home screen, press the **Start > Cingular Mall > 2 Shop Games**.
2. Press **OK**.
3. Follow the on-screen options. The downloaded files can be stored in the **Java** folder found within the Applications menu. Categories include:
 - New Arrivals
 - Retro
 - 3D Games
 - Game Clubs
 - Search for a specific game by name

4. Select a game entry and press the **OK** key.
5. When you are ready to purchase the game, press the **Buy Now** button to charge your e-wallet account and complete the transaction.

Shop Graphics

The **Shop Graphics** menu option allows you to shop for graphic images using the built-in browser. You can download new images to your **My Pictures** folder. To access this menu option, use the following steps:

1. On the Home screen, press the **Start > Cingular Mall > 3 Shop Graphics**
2. Press **OK**.
3. Follow the on-screen options. The downloaded files can be stored in the **My Pictures** folder found within the My Stuff (Phone) location. These images can be used as wallpapers or included into multimedia messages.
4. Select an image entry and press the **OK** key.
 - When you are ready to purchase the image, press the **Buy Now** button to charge your e-wallet account and complete the transaction.

Shop Multimedia

The **Shop Multimedia** menu option allows you to shop for multimedia files (videos) using the built-in browser. You can download new videos to the **My Videos** folder. To access this menu option, use the following steps:

1. On the Home screen, press the **Start > Cingular Mall > 4 Shop Multimedia**.
2. Press **OK**.

3. Follow the on-screen options. The downloaded files can be stored in the **My Videos** folder found within the My Stuff (Phone) location. These files can be included into multimedia messages.
4. Select an video file entry and press the **OK** key.
5. When you are ready to purchase the file, press the **Buy Now** button to charge your e-wallet account and complete the transaction.

Shop Application

The **Shop Application** menu option allows you to shop for application files using the built-in browser. You can download the new applications to your **My Stuff** folder. To access this menu option, use the following steps:

1. On the Home screen, press the **Start > Cingular Mall > 5 Shop Multimedia**.
2. Press **OK**.
3. Follow the on-screen options. The downloaded apps. can be stored in the **My Stuff** folder found within the My Stuff (Phone) location. These files can be included into multimedia messages.
4. When you are ready to purchase the application, press the **Buy Now** button to charge your e-wallet account and complete the transaction.

MEdia Net Home

The **MEdia Net Home** menu option allows you to quickly access your Cingular MEdia Net homepage using the built-in browser. This

page gives you quick access to information such as local weather, sports scores, horoscope information and quick links to the previously mentioned shopping sites. To access this menu option, use the following steps:

1. On the Home screen, press the **Start > Cingular Mall > 6 MEdia Net Home**.
2. Press **OK**.
3. The **MEdia Net Home** menu launches the built-in browser and launch this Cingular homepage.

Section 9: Messaging, Internet, and Messenger

Topics Covered

- Changing the Text Input Mode
 - Using T9 Mode
 - Entering Upper and Lower Case
 - Entering Symbols
 - Entering Numbers
-

This section outlines how to send text (SMS/MMS), Instant Messaging, and Email Messages.

Messaging

In Messaging, you can create, send, receive, view, edit, and organize:

- Text messages (SMS)
- Multimedia message (MMS)
- E-mail messages

To open Messaging

On the **Home** screen, press the **Start** soft key and select **Messaging**.

Working with SMS or MMS Messages

You can write an SMS message of up to 160 characters. When you enter more than 160 characters, your phone handles the message as a multi-part message.

You can also send or receive multimedia messages (MMS). In addition to the familiar text content of text messages, multimedia messages can contain images, video clips, audio clips, and combinations of these things in more than one page.

MMS also supports e-mail addressing, so that messages can be sent from phone to e-mail and vice versa.

Creating and Sending an SMS Message

1. On the **Home** screen, press the **Start** soft key.
2. Select **Messaging > SMS/MMS**.
3. Press the **New** soft key and select **SMS**.
4. In the **To:** field, enter the recipients' phone numbers, separating them with a semicolon (;).

You can retrieve numbers from the contact list by pressing the **Menu** soft key and selecting **Add Recipient**.

5. When you have finished composing the message, press the **Send** soft key.

Creating and sending an MMS message

1. On the **Home** screen, press the **Start** soft key.
2. Select **Messaging > SMS/MMS**.
3. Press the **New** soft key and select **MMS**.
4. In the **To**, **Cc**, or **Bcc** field, enter the recipients' numbers or addresses, separating them with a semicolon (;).

Note: The **Cc** and **Bcc** fields are above the **To** field.

You can also retrieve numbers or the addresses from the contact list or the messages you have sent by pressing the **Menu** soft key and selecting **Add Recipients**.

5. Press the **Down Navigation** key to move to the **Subject** field and enter the message subject.
6. Press the **Down Navigation** key and enter the message text.
7. Press the **Menu** soft key to access the following options for composing a message:
 - **Preview:** shows the multimedia message you created.
 - **Add Recipients:** allows you to add recipients' addresses.
 - **Edit Item:** allows you to edit the selected item.
 - **Add:** allows you to add a media file.
 - **Attach:** allows you to attach a contact card or calendar item as a digital file format, or a media file.

- **Edit Page:** allows you to add or delete pages, change the text style, or set the page order or duration.
 - **Save to:** allows you to save the message as a draft or as an MMS template.
 - **Cancel Message:** cancels sending the message.
 - **MMS Options:** allows you to change the message options.
8. When you have finished composing the message, press the **Send** soft key.

Viewing SMS/MMS Messages

When you receive a new SMS or MMS message, the New Message icon (✉) displays on the top line of the screen and a new message is stored in Inbox. Press the **Message** soft key to open the message.

You can also view messages you received, sent, composed but not sent by accessing the message folders.



To open the message folders

On the SMS/MMS screen, press the **Menu** soft key and select **Folders**. The following default folders display:

- **Deleted Items:** contains messages that have been deleted on your phone.
- **Drafts:** stores draft messages that have not been sent.
- **Inbox:** contains received messages. Received push message and broadcast messages are also stored in this folder.
- **.Outbox:** is a temporary storage place for messages waiting to be sent.
- **. Sent Items:** stores the messages that have been sent.

To view a message

1. Open the message folder you want. The icons on the message list tells you the message type.

-  SMS message
-  MMS message

Note: You can change the default settings for viewing a message. From any message folder, press the **Menu** soft key and select **Options > Display**.

2. Select the message you want to view.
If you open a push message from a WAP server, press the **Proceed** soft key to access the URL specified in the message.
3. Press the **Left** or **Right Navigation** key to view other messages.

To access message options

From any message folder, you can access the following options by pressing the **Menu** soft key; depending on the selected folder, available options may vary:

- **Delete:** deletes the message.
- **Reply:** sends a reply to the sender and/or all other recipients, or forwards the message to other people.
- **Folders:** allows you to access other folders.
- **Switch Accounts:** allows you to switch to another message account.
- **Move:** allows you to move the message to other folders.
- **Delete All:** allows you to delete all messages in your message folder.
- **Delete All Read:** allows you to delete all messages that have been opened and read.
- **Mark as Unread/Mark as Read:** allows you to mark the message as unread or read. Unread messages are boldfaced on the message list.
- **Download Message:** downloads message to the handset.

- **Options:** allows you to change the options for the Messaging.
- **Send/Receive:** begins the send/receive option to send or receiving messages.

Configuring MMS Settings

You can change the default MMS settings. While composing or viewing an MMS message, press the **Menu** soft key and select **MMS Options**. The following options are available:

- **Sending Options:** allows you to change the settings for sending MMS messages.
 - **Priority:** You can select the priority level of your messages.
 - **Validity Period:** You can select the length of time your messages are stored in the message center after they are sent.
 - **Delivery Time:** You can select the time delay before messages are sent.
 - **Creation Mode:** You can set whether or not the phone allows the MMS creation using unsupported files.
 - **Size:** You can select the maximum message size.
 - **Request delivery report:** When this option is activated, the network informs you whether or not your message has been delivered.
 - **Request read report:** When this option is activated, your phone sends a request for a read reply along with your message to the recipient.
- **Receiving Options:** allows you to change the settings for receiving MMS messages.
 - **Download Mode:** allows you to set the download availability. Choose from Automatic, Manual, or Reject.

- **Reject Unknown Sender:** Reject messages from unknown senders.
 - **Report Allowed:** Send a delivery report from the network to the sender.
 - **Advertisement Allowed:** Accept advertisements.
 - **Information Allowed:** Accept information messages.
- **MMS Profiles:** allows you to set up and activate MMS profiles which are sets of MMS parameters required to send or receive MMS messages. To activate a profile, select it from the profile list.

To edit a profile, press the **Menu** soft key and select **Edit**. You can change the following options:

- **Profile Name:** Enter the profile name.
- **MMSC URL:** Enter the URL address of the MMS center.
- **Proxy:** Activate or deactivate the proxy server. When this option is activated, the IP Address and Port options are activated.
- **Address:** Enter the IP address of the gateway.
- **Port:** Enter the port number of the gateway.
- **Bearer:** Check the network bearer type. Press the **Menu** soft key and select **Advanced Settings** to access the additional options:
 - **APN:** Enter the access point name.
 - **Login ID:** Enter the login name.
 - **Password:** Enter the login password.
 - **DNS1/DNS2:** Enter the primary or secondary DNS address.
- **About:** shows version and copyright information.

Working with E-mail Messages

You can send and receive e-mail messages in one of these ways:

- Synchronize e-mail messages with Microsoft Exchange or Microsoft Outlook on your PC.
- Send and receive e-mail messages by connecting directly to an e-mail server through an Internet Service Provider (ISP) or a network.

Synchronizing e-mail messages

Use the Outlook Email account to send and receive e-mail messages by synchronizing e-mail messages with Microsoft Exchange or Microsoft Outlook on your PC.

E-mail messages can be synchronized as part of the general synchronization process. You will need to enable Inbox synchronization in ActiveSync.

During synchronization:

- Messages are copied from the mail folders of Exchange or Outlook on your PC to the **Outlook Email** folders on your phone.
- E-mail messages in **Outlook Email** on your phone are transferred to Exchange or Outlook, and then sent from those programs.

Connecting Directly to an E-mail Server

You can send and receive e-mail messages by connecting to an e-mail server. You'll need to set up a remote connection to a network or an ISP, and a connection to your e-mail server.

When you connect to the e-mail server, new messages are downloaded to the phone's Inbox folder. Also messages in the phone's Outbox folder are sent, and messages that have been deleted on the e-mail server are removed from the phone's message folders.

Folder Behavior With a Direct Connection to an E-mail Server

The behavior of the folders you create depends on whether you are using POP3 or IMAP4.

- If you use POP3 and you move e-mail messages to a folder you created, the link is broken between the messages on the phone and their copies on the mail server. The next time you connect, the mail server will see that the messages are missing from the phone and delete them. This prevents you from having duplicate copies of a message, but it also means that you will no longer have access to messages that you move to folders created from anywhere except the phone.
- If you use IMAP4, the folders you created and the e-mail messages you moved are mirrored on the server. Therefore, messages are available to you anytime you connect to your mail server. This synchronization of folders occurs whenever you connect to your mail server; create new folders or rename/delete folders when connected.

Creating an E-mail Account

You need to create a new account to be used for retrieving and sending e-mail messages.

To make a new account:

1. From the main **Messaging** screen, select **New Account...**
2. Select **Other (POP3/IMAP)** and press the **Next** soft key.
3. Enter your display name and e-mail address, and press the **Next** soft key.
If you want to set up your account automatically from the Internet, select **Attempt to obtain email settings from the Internet.**
4. Enter your user information, such as user name, password, and domain name, press the **Next** soft key.

5. Select the e-mail server type, enter an account name, and select a network type.
6. Press the **Next** soft key.
7. Enter the server names and press the **Next** soft key. To set up an outgoing server, select **Outgoing Server Settings**.
8. Set the options for downloading e-mail messages and press the **Next** soft key.
You can select the number of days for which you receive e-mail messages and set the maximum data volume of e-mail messages you want to download.
9. Select how often your phone automatically connects to the server and checks for incoming e-mails, and press the **Next** soft key.
10. Press the **Finish** soft key.

To edit an account:

1. From the main **Messaging** screen, scroll to the account you want.
2. Press the **Menu** soft key and select **Settings**.
3. Change the account settings as you would when creating it.

Creating and sending an e-mail message

1. On the **Messaging** main screen, select the e-mail account with which you want to send.
2. Press the **New** soft key.
3. In the **To**, **Cc**, or **Bcc** field, enter the recipients e-mail addresses, separating them with a semicolon.

Note: The **Cc** and **Bcc** fields are above the **To** field.

You can retrieve addresses from the contact list by pressing the **Menu** soft key and selecting **Add Recipient**.

4. Press the **Down** Navigation key to move to the **Subject** field and enter the e-mail subject.
5. Press the **Down** Navigation key and enter the message text.

To enter preset or frequently used sentences, press the **Menu** soft key and select **My Text >** a sentence.

You can add a picture or voice note as an attachment by pressing the **Menu** soft key and selecting **Insert >** an item type.

6. When you have finished composing the message, press the **Send** soft key.
7. Press the **Menu** soft key and select **Send/Receive** to connect to the network and send the message.

Viewing E-mail Messages

You can also view messages you received, sent, composed but not sent by accessing the message folders.

To open the message folders:

1. On the **Messaging** main screen, access the e-mail account you want, press the **Menu** soft key, and select **Folders**.

The following default folders display:

- **Deleted Items:** contains messages that have been deleted on your phone.
- **Drafts:** stores draft messages that have not been sent.
- **Inbox:** contains received messages.
- **Outbox:** is a temporary storage place for messages waiting to be sent.
- **Sent Items:** stores the messages that have been sent.

To view an e-mail message:

1. On the **Messaging** main screen, select the e-mail account from which you want to receive e-mail messages.
2. Press the **Menu** soft key and select **Send/Receive**.
The phone connects to your e-mail server and receives incoming e-mail messages or sends e-mail messages in Outbox.
3. Select the message you want to view.

To access message options:

From any message folder, you can access the following options by pressing the Menu soft key:

- **Delete:** deletes the message.
- **Reply:** sends a reply to the sender and/or all other recipients, or forwards the message to other people.
- **Folders:** allows you to access other folders.
- **Switch Accounts:** allows you to switch to another message account.
- **Move:** allows you to move the message to other folders.
- **Mark as Unread/Mark as Read:** allows you to mark the message as unread or read. Unread messages are boldfaced on the message list.

- **Download Message/Do Not Download:** allows you to set the phone to download the complete contents of the e-mail from the e-mail server, or cancel the download setting.
- **Options:** allows you to change the options for the Messaging.
- **Send/Receive:** sends or receives the e-mail messages.

Setting downloading options

You can specify your downloading preferences when you set up the account or select your synchronization options.

- Change options for Inbox synchronization using Microsoft® ActiveSync® options. For more information, see page 47.
- Change options for direct e-mail server connections in Inbox on your phone. Press the **Menu** soft key and select **Options > Account Settings**. Select the account you want and change it.

Viewing e-mail attachments

To download an attachment, select **Get entire message and any attachments** in an open message, or press the **Menu** soft key and select **Download Message**. It will be downloaded the next time you synchronize or connect to your e-mail server. To view an attachment, select the attachment in an open message.

Inserting signatures into messages

You can specify a signature to be automatically inserted into SMS, MMS or e-mail messages that you send.

To specify a signature:

1. From any message folder, press the **Menu** soft key and select **Options > Signatures**.

2. Select the account for which you want to specify from the **Select an account** field.
3. Select **Use signature with this account**.
4. To insert a signature in every messages, including when you reply or forward the message, select **Include when replying and forwarding**.
5. Enter a signature to be inserted and press the **Done** soft key.

Internet Explorer

Use Microsoft Pocket Internet Explorer to view Web HTML, cHTML, and WAP pages. You can browse by connecting to an Internet Service Provider (ISP) or network and browse the Web.

When connected to an ISP or network, you can also download files and programs from the Internet.

To open Internet Explorer:



On the **Home** screen, press the **Start** soft key and select **Internet Explorer**.

Connecting to a Website

1. To connect and start browsing, do one of the following:
 - Press the **Menu** soft key and select **Address Bar**. Enter the web address you want to visit or select a page from the history list.
 - Scroll to the page you want to view from the Favorites list.
2. Press the **Go** soft key on the browser to open the associated web page.

Navigating the Internet Explorer

From web pages, you can use the following options:

To	Press
scroll through browser items	the Navigation keys.
select a browser item	
return to the previous page	
refresh the connection	the Menu soft key and select Refresh .
To change the display options	the Menu soft key, select View , and select the option you want.
To change the text and image size	the Menu soft key, select Zoom , and select the option you want.
view information on the web page	the Menu soft key and select Tools > Properties .

Using the Favorites list

You can store your favorite links while using the Internet Browser and then access them easily at a later time. Categorizing them enables you to find them more quickly.

Adding a web page to the Favorites list

1. Go to the page you want to add, press the **Menu** soft key, and select **Add to Favorites**.

Section 9: Messaging, Internet, and Messenger 117

2. Change the name for the favorite link, if necessary.
3. Select a category under which you want to save the favorite link from the **Folder** field.
You can also create a new category.
4. Press the **Add** soft key.

Opening a Link Through the Favorites List

1. On the **Internet Explorer** screen, press the **Favorites** soft key.
2. Scroll to the link you want to access.
If the link you want is in the certain folder, open the folder and scroll to the link.
3. Press the **Go** soft key.

Managing Favorites Categories

You can create a new category for saving favorite web pages, and rename or delete the created categories.

To add a category:

1. On the **Internet Explorer** screen, press the **Menu > Add Folder**.
2. Enter a category name and press the **Add** soft key.

To edit the categories:

Scroll to the category you want, press the **Menu** soft key, and select **Edit** or **Delete** to rename or delete the selected category.

Changing Explorer options

You can customize web browsing options, change the connection settings, and clear memory. On the **Internet Explorer** screen, press the **Menu > Options**.

The following options are available:

- **General:** You can select whether or not to play sounds on web pages, view the warnings when you move from a secure web page to a non-secure one, or enable or disable the receiving and sending of cookies. You can also select the text encoding type to use.
- **Connections:** You can change the network setting to connect to Internet Explorer. If you select **Automatically detect settings**, your phone automatically detects network settings from your service provider.
- **Memory:** You can check the amount of memory currently being used for the Internet Explorer. To clear the memory, scroll to a type of memory and press the **Clear** soft key.

Instant Messaging

Your handset comes with the ability to sign onto Instant Messaging. You must first create an active account using your PC, and then you can connect and chat using the following applications:

- AOL Instant Messenger
- MSN Messenger
- Yahoo! Messenger

Use the on screen directions to sign onto your **Instant Messaging** application.


Section 10: Camera

Topics Covered

- Camera
-



With the built-in camera of your phone, you can take photos or record videos of people or events while on the move. Your phone produces JPEG photos and 3GP videos.

Camera

From the **Home** screen, press the **Start** soft key and then the **More** soft key, and select **Camera** or press the **Camera** key  on the side of the phone.

Taking photos

When you access Camera mode, the image to be captured appears.

1. Adjust the image to be captured.
 - Press the **Up** or **Down** Navigation key to zoom in or out.
 - Press the **Left** or **Right** Navigation key to adjust the brightness of the image.
 - Press the **Menu** soft key to access the camera options.
 - Use the number keypad to adjust the image quickly.
2. Press  or  to take a photo.
3. Press the **Save** soft key to save the photo.

The photo is saved to the location specified in the **Default Storage** option. After saving the photo, the camera automatically returns to Photo Preview mode.

Setting camera options

You can customize the camera settings. Once you change the camera settings, the corresponding icons display at the top of the photo preview screen.

On the preview screen, press the **Menu** soft key.

- **Camcorder**: switches to Camcorder mode.
- **Shooting Mode**: changes the camera shooting mode.
 - **Single Shot**: takes a normal single shot.

- **Multi Shot:** takes a series of stills. You can select the default number of photos the camera will take in the Camera menu in **Options**.
- **Mosaic Shot:** takes a series of stills and saves them in one frame. You can select the default layout in the Camera menu in **Options**.
- **Size:** allows you to select an image size.
- **Quality:** allows you to select an image quality.
- **White Balance:** allows you to select the white balance mode to adjust the color balance of photos.
- **Timer:** selects the length of time for the camera to delay before taking a photo.
- **Effect:** changes the color tone for photos or applies a special effect to photos.
- **Frame:** selects a decorative frame.
- **Options:** changes the default settings for Camera.

Using the keypad shortcuts

You can use the keypad to customize your camera settings when you are in the photo preview screen.

1
E

switches to Camcorder mode.

2
T

changes the shooting mode by changing the number of photos or the layout.

3
U

changes the image size.

4
D

changes the image quality.



changes the white balance.



selects the length of time delay before taking a photo.



changes the color tone or applies a special effect.



allows you to add a decorative frame to the photo.





accesses camera setting options.

Viewing photos

To view photos you have taken, press the **My Photo** soft key in Camera mode. The list of the photos in the currently selected memory appears.

Recording video clips

1. From Camera mode, press  to switch to Camcorder mode. The image to be recorded appears.
2. Adjust the image to be recorded.
 - Press the **Up** or **Down** Navigation key to zoom in or out on your subject.
 - Press the **Left** or **Right** Navigation key to adjust the brightness of the image.
 - Press the **Menu** soft key to access the camcorder options.
 - Use the number keypad to adjust the image quickly.
3. To start recording, press . The timer on the top left of the screen shows you the elapsed time.
Press the **Pause** or **Resume** soft key to pause and resume recording.

4. To stop recording, press **OK**.
5. Press the **Save** soft key to save the video clip.
The video clip is saved to the location specified in the **Default Storage** option. After saving the video, the camcorder automatically returns to Video Preview mode.

Setting camcorder options

You can customize the camcorder settings. Once you change the video settings, the corresponding icons display at the top of the video preview screen.

On the video preview screen, press the **Menu** soft key.

- **Camera:** switches to Camera mode.
- **Recording Mode:** select a video recording mode. Select **Limit for MMS** to record a video suitable for an MMS or Normal message. Select **Normal** to record a video within the limit of the currently available memory.
- **Size:** allows you to select a video frame size.
- **Quality:** allows you to select an image quality.
- **White Balance:** allows you to select the white balance mode to adjust the color balance of videos.
- **Timer:** selects the length of time for the phone to delay before recording a video.
- **Effect:** changes the color tone for videos or applies a special effect to videos.
- **Audio Record Off/Audio Record On:** selects whether or not you record a video with audio.
- **Options:** changes the default settings for Camera.

Using the keypad shortcuts

You can use the keypad to customize your video settings when you are on the video preview screen.

1
E

switches to Camera mode.

2
T

changes the recording mode.

3
U

changes the frame size.

4
D

changes the image quality.

5
G

changes the white balance.

6
J

selects the length of time delay before starting recording a video.

7
X

changes the color tone or applies a special effect.

8
V

mutes or unmutes audio.

9
N

accesses camera setting options.

Playing video clips

To view the video clips you have recorded, press the **My Video** soft key in Camcorder mode. The list of the video clips in the currently selected memory appears.

Changing the default camera settings

To customize the default camera settings, press the **Menu** soft key and select **Options**.

The following options are available:

- **General:** You can customize the general settings for the Camera program.
 - **Viewfinder:** allows you to the camera to display icons on the preview screen.
 - **Auto Save:** allows you to sets the camera to save a photo or video after capturing.
 - **Default Storage:** allows you to select where you want to store your photos or video clips.
 - **Time Out:** allows you to set the period of time the camera waits before turning itself off when it is not used.
- **Camera:** You can customize the settings for Camera mode.
 - **Multi shot:** allows you to set the number of photos and the shooting speed.
 - **Mosaic shot:** allows you to select the layout and shutter release mode.
 - **Default Prefix:** allows you to change the default prefix of photo names.
 - **Sound:** allows you to select sounds for the shutter release, zooming, and brightness adjustment.
- **Camcorder:** You can customize the settings for Camcorder mode.
 - **Default Prefix:** allows you to change the default prefix of video names.
 - **Sound:** allows you to enable or disable the sound effect when recording begins or ends.
- **Shortcut:** You can check view the functions assigned to the keys in Camera mode or Camcorder mode.

Section 11: Organizer

Topics Covered

- Alarms
 - Calculator
 - D-Day
 - NotePad
 - Smart Converter
 - Stopwatch
 - Tasks
 - Voice Notes
 - World Clock
-

Contacts maintains a list of your friends and colleagues so that you can easily find the information you are looking for, whether you are at home or on the road.

Alarms

You can use the alarm clock to set a wake-up alarm or set an alarm to remind you of an appointment.

To open Alarms:

On the **Home** screen, press the **Start** soft key and select **Organizer > Alarms**.

Setting a wake-up alarm

1. On the **Alarm** screen, select **Wake up alarm**.
2. Check a box, enter the time for the wake-up alarm to sound, and select the days when the wake-up alarm rings in the week viewer.

Use the Navigation keys to move through each field. You can set the wake-up alarm at 3 different times.

3. Select a melody for the alarm in the **Tone** field.
4. Select a time interval to resume the alarm after in the **Snooze** field.
5. Press the **Done** soft key.

Setting an alarm

1. On the **Alarm** screen, select one of **Alarm 1** to **Alarm 9**.
2. Set each alarm option.
3. Press the **Done** soft key.

Stopping an alarm

- When an alarm rings, press the **Dismiss** soft key to stop it, or press the **Snooze** soft key to set the alarm to ring again after the specified snooze interval.

- To deactivate an alarm, select the one you want from the Alarm screen, select **Off** on the **Alarm Activation** line.

Calculator

The calculator allows you to perform general mathematical functions, such as addition, subtraction, multiplication, and division.

1. On the **Home** screen, press the **Start** soft key and then the **Organizer**
2. Select **Calculator**.
3. Enter the numbers and operations (**+**, **-**, **/**, or **x**).
4. To execute the calculation, press **OK**.

D-Day

In **D-Day**, you can calculate how many days are left before or have passed since a specific event.

To open D-Day:

On the **Home** screen, press the **Start** soft key and then the **More** soft key, and select **Organizer > D-Day**.

Creating a D-Day counter

1. Press the **New** soft key.
2. Set options in each field.
 - **Date:** Enter the date of the day you want to count to or from.
 - **Title:** Enter the counter title.
 - **Category:** Select one of the preset categories. You can filter counters by category from the counter list.
 - **Repeat every year:** Select to set the D-day counter to repeat every year.

3. When you have finished, press the **Done** soft key. The counter is added to the list and shows how many days are left or have passed.

Editing D-Day categories

You can change the names and icons of D-Day categories.

1. From the counter list, press the **Menu** soft key and select **Edit Category**.
2. Scroll to the category you want.
3. Press the **Menu** soft key and select **Rename**.
4. Enter a new name and press the **Done** soft key.
5. Press the **Left** or **Right** Navigation key to change the category icon.
6. Press the **Done** soft key to save changes.

Deleting a D-Day counter

1. Scroll to the counter you want.
2. Press the **Menu** soft key and select **Delete**.

NotePad

Using NotePad, you can create memos for important things, and manage them.

To access NotePad:

On the **Home** screen, press the **Start** soft key and select **Organizer > NotePad**.

Creating a memo

1. Press the **New** soft key.
2. Enter the memo text and press the **Done** soft key.

Viewing a memo

To view memo details, select the memo you want from the list.

Sending a memo

You can send your notes as part of a SMS or e-mail message.

1. Scroll to the memo you want.
2. Press the **Menu** soft key and select **Send via email Or Send via text message**.
3. Compose and send a message.


Deleting a memo


1. Scroll to the memo you want.
2. Press the **Menu** soft key and select **Delete**.
3. Press the **Yes** soft key to confirm the deletion.

Smart Converter

In Smart Converter, you can perform unit conversions.

1. On the **Home** screen, press the **Start** soft key.
2. Select **Organizer > Smart Converter**.
3. Select a converter type.
4. Select an original unit and enter the value to be converted in the upper unit field.

Press  to add a decimal point. Your phone only can display up to 15 digits after the decimal point.

In the temperature converter, press  to change the temperature to below or above zero.

5. Select a target unit from the lower unit field. The equivalent value appears.

Notes

To reverse the unit fields for continuous conversions, press the **Menu** soft key and select **Reverse**.

For the currency converter, you may need to change currency rates. Press the **Menu** soft key and **View rates**.

Stopwatch

You can measure elapsed time interval.

1. On the **Home** screen, press the **Start** soft key.
2. Select **Organizer > Stopwatch**.
3. Press the **Start** soft key to start the timer.
4. Press the **Record** soft key to check an interval.
You can do this step for a total of 99 intervals.
5. Press the **Stop** soft key to stop the stopwatch.
6. Press the **Reset** soft key to reset the timer.

Tasks

Tasks is a convenient place to create task reminders.

You can mark a task as completed or delete a task.

To open Tasks:

On the **Home** screen, press the **Start** soft key and select **Organizer > Tasks**.

Creating a task note

1. Enter your task information in the **Enter new task here** field.
2. When you have finished, press **OK**.

Completing a task

When a task is complete, mark it to indicate that the task is done. To mark, scroll to the completed task and press the **Complete** soft key.

To unmark, press the **Activate** soft key.

Beaming a task note

You can send a task note to another phone via an active Bluetooth connection.

On the task list, scroll to the task you want. Press the **Menu** soft key and select **Beam Task**.

Deleting a task

1. On the task list, scroll to the task.
2. Press the **Menu** soft key and select **Delete Task**.
3. Press the **Yes** soft key to confirm the deletion.

Voice Notes

In any program where you can write on the screen, you can also quickly capture thoughts, reminders, and phone numbers by recording a message. Using Voice Notes, you can create a recording.

To open Voice Notes:

On the **Home** screen, press the **Start** soft key and select **Organizer > Voice Notes**.

Recording a voice note

1. Hold your phone's microphone near your mouth or other source of sound.
2. Press the **Record** soft key to make your recording.

3. Press the **Stop** soft key to stop recording.

Your phone automatically saves the voice note and lists the note on the voice note list.

Reviewing a voice note

On the voice note list, select the note you want to review. Recording plays. During playback, you can adjust the sound volume by pressing ▲ / ▼ .

Setting a voice note as the ringtone

1. On the voice note list, scroll to a voice note.
2. Press the **Menu** soft key and select **Set As Ringtone**.
3. Press the **OK** soft key.

Deleting a voice note

1. On the voice note list, scroll to a voice note.
2. Press the **Menu** soft key and select **Delete**.
3. Press the **Yes** soft key to confirm the deletion.

World Clock

You can set up the world clock with the time zones you want, and then check the current time of the city you need at any time.

1. On the **Home** screen, press the **Start** soft key.
2. Select **Organizer > World Clock**.
3. Select the clock you want.
4. Press the **Left** or **Right** Navigation key to move the time zone line.

To apply daylight savings to the currently selected time zone, select **Summer Time**.

5. Press the **Done** soft key to save the selected time zone.
To remove an assigned time zone, press the **Edit** soft key and select **Clear**.
6. Repeat from step 2 to add time zones.

Section 12: Games

Topics Covered

- Games
-

This section lists and describes the games delivered on your device.

Games

Your phone includes fun games, such as Bubble Breaker and Solitaire in Games. You can also download and play new Java games.

To open Games:

On the **Games** screen, press the **Start** soft key and then the **More** soft key, and select **Games**.

Bubble Breaker

The object of Bubble Breaker is to clear out all the balls. The rule is that you may only clear out adjacent same-colored balls. The score depends on clear out every balls.

Playing a game

1. On the **Game** screen, select **Bubble Breaker**.
2. Navigate to the ball you want to clear and press **OK**.
The group will be outline, and the score for that selection will be shown.
3. Press **OK** to accept that selection. The selected balls are cleared out.

Press the **Menu** soft key and select **Statistics** to view statistics or information about the game.

You can customize the game options such as play sounds, game style, or ball color by pressing the **Menu** soft key and selecting **Options**.

Solitaire

The object of Solitaire is to use all the cards in the deck to build up the four suit stacks in ascending order, beginning with aces.

Playing a game

1. On the Start screen, select **Solitaire**.
2. Move any aces on the seven stacks to the four card spaces at the top of the screen and then make any other available plays.

To move cards, press the number or character of the card to move and then press the number or character of the stack to which you want to move the card.

Note: Pressing the **Up** key moves a card to one of the four stacks in the upper right corner of the screen if it belongs there.

3. When you have made all available plays, press the **Draw** soft key to turn over cards.

Section 13: Extra Programs

Topics Covered

- Download Agent
 - File Explorer
 - Picxel Viewer
 - RSS Reader
 - Smart Search
 - Speed Dial
 - Task Manager
-

This section lists and describes the programs delivered on your device.

Download Agent

In Download Agent, you can update your phone's OS images.

To update OS images:

1. On the **Home** screen, press the **Start > More > Applications > Download Agent**. The list of files to be downloaded display.
2. Scroll to the image package file and press the **Install** soft key.

File Explorer

The File Explorer program allows you to open an explorer window similar to a desktop Windows based system. The explorer window allows you to navigate through your phone to locate the desired folders and files.

You can also quickly manage, delete, copy, or edit any files and folders on your phone.

Note: If you turn off the phone after storing some files in any folders, except for the Storage folder, using Windows[®] ActiveSync[®], all of the files in those folders will be deleted. Store important files in the Storage folder to prevent them from being deleted.

Accessing files

1. On the **Home** screen, press the **Start** soft key and then press **More > Applications > File Explorer**. The list of the folders in the phone's memory displays.
2. Scroll to the folder that you want to view.
3. Select an item to open it press **OK**.

Using file management options

From the file directory, press the **Menu** soft key to access the following options:

- **Send:** Send a file as part of an Outlook E-mail message.
- **Beam:** Send a file via Bluetooth.
- **Edit:** Access file editing options, such as **Cut, Copy, Paste, Delete, Rename** and **New Folder**.
- **Properties:** Access the file or folder properties.
- **View:** Change the view mode of the files from Icons or List.
- **Sort By:** Change the sort order of the files by Name, Date, Size or Type.
- **My Device:** Access the file directory of your phone.
- **Storage Card:** Access the files residing on the storage card.
- **My Documents:** Access the **My Documents** folder.

Java

Enables Java programs launch and run under the Windows Mobile Application.

Picisel Viewer

Picisel Viewer allows you to view documents on your phone without any file-conversion or loss of content.

To view a document, you must transfer documents from a PC. If you have installed the memory card, you can view the files stored in it.

By default, Picisel Viewer supports the most common desktop document formats, such as, .doc, .xls, .ppt, .pdf, and .wmf.

Note: Some document formats, such as .xls and .ppt, are not transformed into their corresponding file types when you copy them to your phone by using ActiveSync, so that you cannot view the documents in the directory.

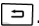
To avoid this case, change the conversion setting on the Windows® ActiveSync® screen on your computer.

To open Picsel Viewer:

On the **Home** screen, press the **Start > More > Applications > Picsel Viewer**.





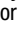
Viewing a document







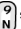

When you open Picsel Viewer, the file directory of the phone displays.

1. Select the folder containing the document you want. If you have installed a memory card, **Storage Card** appears to allow you to access files on the memory card. To go back to the upper level directory, select .
2. Select the document you want to open. Adobe PDF, Microsoft Word, Microsoft Power Point, Microsoft Excel, Plain Text, JPEG/ BMP/GIF/PNG.

Using options in a document view

From a document view, you can use the number keypad to quickly perform an option. These are the keys you can use and options assigned to each key.

- **Switching view mode:** To switch between Panning and Zooming mode, press .
- **Panning:** To pan to a different part of the document, press the Navigation keys to move to the direction you want in Panning mode. You can also press , , , or , respectively.

- **Zooming:** To zoom in or out, press the Navigation keys in Zooming mode or by pressing the  or  key.
- **Fitting to width:** To fit the width of the page on screen, press the **Menu** soft key and select **Page > Fit to width**. You can also press .
- **Navigating:** To navigate the pages, press the **Menu** soft key and select **Page > Next Page, Previous Page, First Page, or Last Page**. You can also press , , , or , respectively.
- **Rotating:** To rotate the screen 90 degrees clockwise, press the **Menu** soft key and select **Page > Rotate**. You can also press .

Viewing History

The history view shows you previously visited documents as a small thumbnail-image of the document, and the document's name, location, and the date of your visiting.

To open the history view, press the **Menu** soft key and select **History**.

To access any of the documents from the history view, select the thumbnail of that page.

Viewing the Favorites list

For your favorite documents, you can keep a list in Favorites. This looks similar to the history view but includes only those pages you have explicitly added. Before viewing the Favorites list, first you must add the pages to the Favorites list.

To add the current page to the Favorites list:

1. Press the **Menu** soft key and select **Favorites** to access the Favorites list.
2. Press the **Add/Delete** soft key and select **Add**.

3. Enter the name you want and press the **OK** soft key.

To open a favorite page:

Access the Favorites list and select the thumbnail of the page you want.

Changing Pictel Viewer settings

On the Pictel Viewer screen, press the **Menu** soft key and select **Settings**. The following options are available:

- **Preferences:** Set the period after which the thumbnail pictures and descriptions of pages are removed from the history memory. To clear the history list, select **Clear History**.
- **Help:** Access the Help screen for using Pictel Viewer.
- **About:** Access information about the developers of Pictel Viewer.

RSS Reader

RSS reader allows quick and easy syndication of news, headlines, and more. It will keep you up to date with the latest news, tools, resources and developments of this widely supported specification.

To open RSS Reader:

On the **Home** screen, press the **Start > Applications > RSS Reader**. The news channel list appears.

Reading the latest news

1. From the news channel list, press the **Update** soft key. The phone connects to the network and updates the news channel list with the latest information.
2. Press the **Done** soft key to return to the channel list.
3. Select the new channel you want.

4. Select the headline in which you have a interest. The Internet Explorer launches and you can view to the corresponding news website.

Exporting or importing channels

You can export a channel as an OPML file format or import OPML files from other sources.

To export a channel:

1. Scroll to a channel from the list.
2. Press the **Menu** soft key and select **OPML > Export**.
3. Enter a file name and press the **OK** soft key.
The file is saved in the selected folder.

To import a channel:

1. Scroll to the folder to which you want to import a channel.
2. Press the **Menu** soft key and select **OPML > Import**.
3. Select the file to import.

Changing RSS reader settings

Press the **Menu** soft key and select **Options** to access the following options:

- **Folder Update setting:** You can change the settings for a selected folder.
- **All update setting:** You can change the settings for the all of the folders.
- **Page option:** You can change the **Deleted expired page**, **Use automatic deletion** and **Max pages** displayed.
- **Proxy:** You can change the proxy settings for the channel.

- **About:** Allows you to view the software details for the RSS Reader.

Smart Search

Your phone provides a search program, **Smart Search**, to allow you to search for data or media files in your phone with ease and quickly access them.

1. On the **Home** screen, press the **Start > More > Applications > Smart Search**.
2. Enter the first few letters of the item name in the **Find** field and select an item type in the **Type** field.
3. Select **Match case** and/or **Match whole word** to let the phone to search for the matching items more quickly.
4. Press the **Go** soft key. The phone searches its file directory or programs and lists all matching items.
5. Scroll to the one you want and press the **Open** soft key.

Setting Up The Search Options

You can change the search options for each item type to provide the phone with more specific information to narrow the search items.

1. From the **SmartSearch** screen, press the **Menu** soft key and select **Options**.
2. Select the item type you want and set each option. Choose from the following options to define your search options:
 - Contact
 - Appointment
 - Task
 - Text message

- E-mail
- Phone call
- File Name

- When you have finished, press the **Done** soft key.

Speed Dial


You can assign a short cut number to a phone number for speed dialling or to an e-mail or URL address for quick access. This options shows you the Speed Dial entries you have added.

1. On the **Home** screen, press the **Start > More > Applications > Speed Dial**.
2. Press the **Menu** soft key and select **Run** or **Go** soft key.
3. Follow the on-screen instructions to change, add or deleted an entry.

Task Manager

Your phone is a multi-tasking device. It can run more than one program at the same time. However, multi-tasking may cause hang-ups, freezing, memory problems, and additional power consumption. To avoid these problems, end unnecessary programs using Task Manager.

To open Task Manager:

On the **Home** screen, press and hold . You can also press the **Start > More > Applications > Task Manager**. The list of all the programs currently running on your phone appears.

Managing running programs

- To activate a program, press the **Menu** soft key and select **Activate**.
- To close a program, press the **Stop** soft key. To close all programs, press the **Menu** soft key and select **Stop all**.
- To refresh the program list, press the **Menu** soft key and select **Refresh**.

Checking the battery status

You can check the remaining battery power level. Press the **Menu** soft key and select **Battery**.

Checking the microSD storage card memory

You can check the memory in use for storing files and running programs in your phone or on a microSD memory card. On the **Task Manager** screen, press the **Memory Info** and select **Storage**.

Section 14: Getting Connected

Topics Covered

- Beaming with Bluetooth
 - Connecting to the Internet or your network
 - Creating a VPN connection
-

You can use your phone to exchange information with other mobile devices as well as your desktop computer, a network, or the Internet. You have the following connection options:

- Exchange information between devices with Bluetooth capabilities without a physical connection.
- Connect the phone to your computer using a USB connection to use the phone as a modem, data sync device or external memory disk.
- Connect to your Internet service provider (ISP) or the network at your company. Once connected, you can send or receive e-mail and instant messages, and browse the Internet or intranet.

Beaming with Bluetooth

Bluetooth is a short-range wireless communications technology. Devices with Bluetooth capabilities can exchange data over a distance of about 10 meters without requiring a physical connection.

You do not need to line up the phone with another device to beam information with Bluetooth.

Activating Bluetooth mode

1. On the **Home** screen, press the **Start** soft key.
2. Select **Settings > Connections > Bluetooth > Bluetooth**.
3. Check boxes to activate the Bluetooth feature and allow other devices to detect your phone.
4. Press the **Done** soft key.

Setting Bluetooth profiles

You can change the settings for each Bluetooth profile available on your phone.

On the **Home** screen, press the **Start** soft key, and select **Settings > Connections > Bluetooth**. The following options are available:

- **Bluetooth:** enables Bluetooth on the device.
- **Headset Setting:** Change the settings for a profile for connecting to a Bluetooth headset.
- **BPP Setting:** Change the settings for a profile for connecting to a Bluetooth printer.
- **My Information Setting:** Set the display name for your phone and check the phone's address.

Searching for and pairing with a Bluetooth device

1. On the **Bluetooth** screen, press the **Menu** soft key and select **Devices**.
2. To search for a new device, select **Add new device...**
3. Wait for the phone to search for Bluetooth devices.
4. Select a device to connect to the phone.

5. Enter a Bluetooth password and press the **Next** soft key. This password is used just once and you do not need to memorize it.

When the owner of the other device enters the same password, pairing is finished.

Note: Some devices, especially headsets or hands-free car kits, may have a fixed Bluetooth PIN, such as **0000**. If the other device has one, you must enter the code.

6. Enter a display name for the other device and press the **Next** soft key.
7. Check the available services and press the **Done** soft key.

Using the device options

When you press the **Menu** soft key from the device list, you can access the following options:

- **Add new device:** allows you to search for any devices.
- **Edit:** allows you to change the name of the connectable device.
- **Delete:** allows you to delete the device.
 1. When a notification that a remote device is trying to connect to your phone, press the Bluetooth password entered from the device and press the **Done** soft key.
 2. When prompted to receive an incoming data, press the **Yes** soft key.

Sending data with Bluetooth

1. Locate the item you want to send in a program, such as **Calendar, Contacts, Tasks and My Stuff, or File Explorer**.

2. Scroll to the item.
3. Press the **Menu** soft key and a Bluetooth sending option, depending on the application you accessed.
4. Search for and pair with the device by following from step 2.
The phone searches for devices within range and displays a list of available devices.
5. Select the device you want to start sending data.
6. Press the **Done** soft key when sending has been complete. If you want to return to the previous screen, press the **Cancel** soft key.

Connecting to a computer via USB

You can select how the phone functions when connected to a computer via the USB port.

1. On the **Home** screen, press the **Start** soft key.
2. Select **Settings > Connections > USB**.
3. Select one of the following functions for USB connections:
 - **ActiveSync**: The phone communicates with a computer via ActiveSync.
 - **Mass Storage**: The phone is perceived as an external memory device.
 - **Modem**: The phone is perceived as a network device for Internet sharing. You can share files with a computer or use an Internet connection, etc.
4. Press the **Done** soft key.

Connecting to the Internet or your network

You can use the **Connections** settings to create dial-up, Virtual Private Network (VPN), GPRS, and proxy connections so that you can connect to the Internet or your corporate network. By using a data connection, you can browse the Internet, download e-mails, chat by using MSN® Messenger, or synchronize remotely with an Exchange Server. Check with your service provider to see if a data connection has already been set up for you, and if over-the-air configuration is supported.

Creating a dial-up connection

You can create a dial-up connection to connect remotely to the Internet, a Wireless Application Protocol (WAP) network, or your corporate network. Then, when you open a program that is configured to use this connection, the phone uses it to automatically connect to the network.

1. On the **Home** screen, press the **Start** soft key.
2. Select **Settings > Connections > Dial-up**.
3. Press the **Menu** soft key and select **Add**.
4. Enter the requested information.
 - **Description:** Enter a name for the connection.
 - **Connects to:** Select a type of network for which the connection will be used.
 - **Phone number:** Enter the dial-up number you use to connect to the network.
 - User name: Enter your network user name.
 - Password: Enter your password.
 - Domain: Enter the domain name, if required.

Note: If you are not sure about the information to enter, ask your service provider.

5. When you have finished, press the **Done** soft key.

Creating a GPRS connection

If you subscribe to General Packet Radio Services (GPRS), you can set up a GPRS connection to gain access to your corporate network or the Internet. This is faster than a dial-up connection.

You can also use your phone as a GPRS modem for a desktop computer.

1. On the **Home** screen, press the **Start** soft key.
2. Select **Settings > Connections > GPRS > GPRS**.
3. Press the **Menu** soft key and select **Add**.
4. Enter the requested information.
 - **Description:** Enter a name for the connection.
 - **Connects to:** Select a network type for which the connection will be used.
 - **Access point:** Enter the information provided by your system administrator.
 - **User name:** Enter your user name for the GPRS network.
 - **Password:** Enter your password.
 - **Primary DNS:** Enter the primary domain naming system (DNS) address.
 - **Secondary DNS:** Enter the secondary DNS address.
 - **IP address:** Enter the Internet Protocol (IP) address.

Note: If you are not sure about the information to enter, ask your network administrator.

5. When you have finished, press the **Done** soft key.

Creating a proxy connection

You can use a proxy connection to gain access to the Internet over an existing connection to your corporate network.

1. On the **Home** screen, press the **Start** soft key.
2. Select **Settings > Connections > More... > Proxy**.
3. Press the **Menu** soft key and select **Add**.
4. Enter the requested information.
 - **Description**: Enter a name for the connection.
 - **Connects from**: Select the type of network from which you will connect.
 - **Connects to**: Select the type of network to which you will connect.
 - **Proxy (name:port)**: Enter the proxy server name and port number in the form.
 - **Type**: Select a network type for which the proxy connection will be used.
 - **User name**: Enter your user name for the network to which you will connect.
 - **Password**: Enter your password.

Note: If you are not sure about the information to enter, ask your service provider.

5. When you have finished, press the **Done** soft key.

Creating a VPN connection

If your company has set up a virtual private network (VPN), you can create a VPN connection to gain access to your corporate network over an Internet connection.

1. On the **Home** screen, press the **Start** soft key.

2. Select **Settings > Connections > More... > VPN**.
3. Press the **Menu** soft key and select **Add**.
4. Enter the requested information.
 - **Description**: Enter a name for the connection.
 - **VPN type**: Select the type of VPN.
 - **Server**: Enter the VPN server name.
 - **Connects from**: Select the type of network from which you will connect to VPN (typically **The Internet**).
 - **Connects to**: Select the type of network to which you will connect (typically **Work**).
 - **User name**: Enter your user name for the VPN.
 - **Password**: Enter your password.
 - **Domain**: Enter the domain name, if required.
 - **IPSec authentication**: If you selected **IPSec/L2TP** for **VPN type**, select the type of authentication.
 - **IPSec Pre-shared key**: If you selected **Pre-Shared Key** for IPSec authentication, enter the shared key.

Note: If you are not sure about the information to enter, ask your network administrator.

5. When you have finished, press the **Done** soft key.

Setting up data connections

After creating connection profiles, you can assign a profile to each network type.

1. On the Connections screen, press the **Menu** soft key and select **Advanced**.
2. Select a connection profile in each network.
3. Press the **Done** soft key.

Adding a URL exception

Some URL addresses for web pages on your company intranet may use periods, for example: intranet.companyname.com. To view these pages in Internet Explorer, you must create a URL exception.

Note: You do not need to create URL exceptions for Internet URL addresses.

1. On the Connections screen, press the **Menu** soft key and select **Advanced**.
2. Press the **Menu** soft key and select **Work URL Exceptions**.
3. Press the **Menu** soft key and select **Add**.
4. Enter the URL pattern and press the **Done** soft key. Separate multiple URL patterns with a semicolon.

Changing the data connection options

On the Advanced screen, press the **Menu** soft key and select **Options** to access the following options:

- **Redial attempts:** Select the redial attempt to connect the Internet or your network after an unsuccessful connection.
- **Idle disconnect after:** Select the length of time your phone waits for connecting to the Internet or your network after the specified period, your phone will disconnect from the Internet or your network.
- **My desktop connects to:** Select the type of network to which your desktop computer will connect.


Section 15: Troubleshooting

Topics Covered


- General
 - Call Problems
 - Power and Charging Problems
 - Program Problems
-

Review the following problems and descriptions to assist in troubleshooting your device.

General

To perform a manual Hard Reset, press the Up Navigation key and the  key.



Problem	Description Solution
“Invalid or missing SIM card. You can still make emergency calls if your service provider supports it” displays	Check that the SIM card has been correctly installed.
“No network coverage,” “Error unable to connect. No network coverage.” or “Message sending failed” displays	<ul style="list-style-type: none">• The network connection has been lost. You may be in a weak signal area (in a tunnel or surrounded by buildings). Move and try again.• You are trying to access an option for which you have not taken out a subscription with your service provider. Contact the service provider for further details.

Problem	Description Solution
The bars next to  disappear	<ul style="list-style-type: none"> • If you have just turned on your phone, wait for about 2 minutes, until your phone finds the network and receives a signal from the network. • If you are in a tunnel or in an elevator, the phone may not be able to receive the network signal properly. Move to an open place. • This may appear when you move between different service areas. It is normal.
The display is not clear	In direct sunlight, you may not be able to see the display clearly. Moving to a place with different lighting should solve this problem.
White lines appear on the display	This may happen if you turn on the phone after a long period of disuse, or after removing the battery without turning off the phone. This is not related to the phone's life or performance. The display should correct itself shortly.


Problem	Description Solution
<p>“PIN code” appears</p>	<ul style="list-style-type: none"> • You are using your phone for the first time. You must enter the Personal Identification Number (PIN) supplied with the SIM card. • The PIN check feature has been enabled. Each time the phone is switched on, the PIN has to be entered. To disable this feature, press the Start soft key, select Settings > More... > Security > Disable SIM PIN, and enter the PIN.
<p>“PUK Required” appears</p>	<p>The PIN code was entered incorrectly three times in succession and the SIM card is now blocked. Enter the PUK supplied by your service provider.</p>

Problem	Description Solution
I forgot the password, PIN, reset password, or PUK codes	If you forget or lose the phone password, contact your phone dealer. If you forget or lose a PIN or PUK code, or if you have not received such a code, contact your network provider. For information about passwords, contact your access point provider, for example, a commercial Internet Service Provider (ISP), service provider, or network operator.

Call Problems

Problem	Description Solution
I have entered a number but it was not dialled	<ul style="list-style-type: none">• Be sure that you have pressed .• Check if your wireless connection to your mobile service provider is switched on and the signal from the network is unobstructed.• You may have set an outgoing call barring option.
My correspondent cannot reach me	<ul style="list-style-type: none">• Be sure that your phone is switched on () pressed for more than one second)• Check if your wireless connection to your mobile service provider is switched on and the signal from the network is unobstructed.• You may have set an incoming call barring option.
My correspondent cannot hear me speaking	<ul style="list-style-type: none">• Be sure that you have switched on the microphone.• Make sure that the phone is close enough to your mouth. The microphone is located at the bottom of the phone.

Section 15: Troubleshooting 168

Problem	Description Solution
The audio quality of the call is poor	<ul style="list-style-type: none"> • Adjust the voice volume by pressing ▲ / ▼ . • Check the signal strength indicator on the display (); the number of bars indicates the signal strength, from strong to weak. • Try moving the phone slightly or moving closer to a window if you are in a building.
Calls to and from the phone are not connected properly, and are easily disconnected	<ul style="list-style-type: none"> • Signals from the network are weak. Move to another area. • Touching the antenna area on the top of the phone may lower the call quality. Be careful not to touch the antenna area while using the phone.

Power and Charging Problems

Problem	Description Solution
The phone malfunctions or does not function	Remove the battery and then replace it. Turn on the phone. If the problem persists, contact a Samsung service representative.
The battery's standby time is shorter than expected	<ul style="list-style-type: none">• Batteries are subject to wear and tear. Standby time may grow shorter as time passes.• Leaving a fully charged battery in a cold or hot place for a long period of time may reduce battery life.• Standby time depends on where you use the phone. The actual time may vary from the battery's specifications.
Is it OK if I leave the phone connected to the power outlet after it is fully charged	We recommend that you disconnect the phone from the adapter or unplug the adapter from the power outlet.

Problem	Description Solution
The phone becomes hot	This may happen when you are on the phone or when you use programs, such as games, the Internet, or the camera, because the phone needs more power at those times. This does not affect the phone's life or performance.
The battery level seem sufficient, but the phone does not turn on	<ul style="list-style-type: none"> • Remove the battery from the phone and reinstall it. Then turn on the phone. • Clean the metal contacts both on the battery and on the phone. Reinstall the battery and turn on the phone.
The phone turns off when the adapter is connected	Dust on the contacts may cause unexpected power-off or charging problems. Clean the metal contacts both on the battery and on the phone.

Program Problems

Problem	Description Solution
Not enough memory to perform operation. Deletesome data first. or Memory low. Delete some data displays	To view what kind of data you have and how much memory the different data groups consume, press the Start soft key and then the More soft key, and select Applications >Task Manager . Press the Menu soft key and select Memory Info . Delete old items from programs. If necessary, make a backup copy of your data using ActiveSync® or the microSD memory card.
WAP Browser	
Unable to connect. Verify your Dial-up or proxy settings, and try again. displays	Insert proper browser settings. Contact your service provider for instructions.
Internet Explorer	

Problem	Description Solution
<p>“Your Internet connection is not configured properly. Please verify your settings in Data Connections.” displays</p>	<p>Insert proper browser settings. Contact your service provider for instructions.</p>
<p>The phone is unable to connect to the Internet</p>	<ul style="list-style-type: none"> • Check if you have set up and are connected to an Internet service provider. • Check if your wireless connection to your mobile service provider is switched on and the signal from the GPRS network is not obstructed. • Verify with your service provider that your user name and password are correct. • Verify with your Internet service provider that the network you are trying to connect is available, or try to connect it from another PC.
Camera	
<p>Images seem smudged</p>	<p>Check if the camera lens protection window is clean.</p>

Problem	Description Solution
Contacts	
No number is dialled when you recall a contact card	<ul style="list-style-type: none"> • Check if a number has been stored in the contact card. • Re-store the number, if necessary.
Bluetooth	
I cannot end a Bluetooth connection	If another device is connected to your phone, you can end the connection by deactivating Bluetooth. Go to Bluetooth and deselect Turn on Bluetooth .
I cannot find my friend's Bluetooth enabled device	<ul style="list-style-type: none"> • Be sure that both have activated Bluetooth. • Be sure that the distance between the two devices is not over 10 metres or that there are no walls or other obstructions between the devices. • Be sure that the other device is in the discoverable mode. • Be sure that both devices are compatible.

Problem	Description Solution
I cannot discover the remote Bluetooth stereo headset	<ul style="list-style-type: none"> • Be sure that the Bluetooth functionality on the phone is turned on. • Be sure that the remote Bluetooth stereo headset is in the discoverable mode. • Be sure that the remote Bluetooth device has the capability to act as a stereo headset.
I cannot connect to the remote Bluetooth stereo headset	Ensure that the correct passkey was entered on the phone during the connection with the headset. Most Bluetooth headsets have a fixed passkey that would be mentioned in their user's guide. You would need to enter the passkey when establishing a connection with the headset.

Problem	Description Solution
I cannot listen to music on the remote Bluetooth stereo headset	<ul style="list-style-type: none"> • Ensure that you are connected to the Bluetooth stereo headset. • Ensure that the song that you are playing is one of the supported formats. • Check the battery levels on the Bluetooth stereo headset. • Ensure that the phone and headset are within range of each other. The maximum distance between the two should not be more than 10 metres.
There are breaks in the music being played on the remote Bluetooth stereo headset	You may observe breaks if there are walls that separate the phone and the Bluetooth stereo headset.
Call History	
The call history appears empty	You may have activated a filter, and no communication events fitting that filter have been logged. To see all events, press the Start soft key and select Call History . Press the Menu soft key and select Filter > No Filter .
Messaging	

Problem	Description Solution
I cannot select a contact card when creating a message	If the contact card does not have a phone number or e-mail address, you cannot select it. Add the missing information to the contact card in Contacts .
PC Connectivity	
Problems occur when connecting the phone to a PC	Make sure that ActiveSync is installed and running on your PC. See the user's guide for ActiveSync on the CD-ROM. For further information on ActiveSync, see the help function on ActiveSync or visit www.microsoft.com .

If the above guidelines do not help you to solve the problem, take note of:

- the model and serial numbers of your phone
- your warranty details
- a clear description of the problem

Then contact your local dealer or Samsung after-sales service.

Section 16: Health and Safety Information

Topics Covered

- Health and Safety Information
-

This section outlines the safety precautions associated with using your phone. These safety precautions should be followed to safely use your phone.

Health and Safety Information

Exposure to Radio Frequency (RF) Signals

Certification Information (SAR)

Your wireless phone is a radio transmitter and receiver. It is designed and manufactured not to exceed the exposure limits for radio frequency (RF) energy set by the Federal Communications Commission (FCC) of the U.S. government. These FCC exposure limits are derived from the recommendations of two expert organizations, the National Council on Radiation Protection and Measurement (NCRP) and the Institute of Electrical and Electronics Engineers (IEEE). In both cases, the recommendations were developed by scientific and engineering experts drawn from industry, government, and academia after extensive reviews of the scientific literature related to the biological effects of RF energy.

The exposure limit set by the FCC for wireless mobile phones employs a unit of measurement known as the Specific Absorption Rate (SAR). The SAR is a measure of the rate of absorption of RF energy by the human body expressed in units of watts per kilogram (W/kg). The FCC requires wireless phones to comply with a safety limit of 1.6 watts per kilogram (1.6 W/kg). The FCC exposure limit incorporates a substantial margin of safety to give additional protection to the public and to account for any variations in measurements.

SAR tests are conducted using standard operating positions accepted by the FCC with the phone transmitting at its highest certified power level in all tested frequency bands. Although the SAR is determined at the highest certified power level, the actual SAR level of the phone while operating can be well below the maximum value. This is because the phone is designed to operate at multiple power levels so as to use only the power required to reach the network. In general, the closer you are to a wireless base station antenna, the lower the power output.

Before a new model phone is available for sale to the public, it must be tested and certified to the FCC that it does not exceed the exposure limit established by the FCC. Tests for each model phone are performed in positions and locations (e.g. at the ear and worn on the body) as required by the FCC. Body-worn operations are restricted to Samsung-supplied, approved, or non-Samsung designated accessories that have no metal and must provide at least 1.5 cm separation between the device, including its antenna (whether extended or retracted) and the user's body. Non-compliance with

the above restrictions may result in violation of FCC RF exposure guidelines.

The FCC has granted an Equipment Authorization for this mobile phone with all reported SAR levels evaluated as in compliance with the FCC RF exposure guidelines. The maximum SAR values for this model phone as reported to the FCC are:

1. GSM 850

- Head: xxxxx W/Kg.
- Body-worn: xxxx W/Kg.

PCS 1900

- Head: xxxx W/Kg.
- Body-worn: xxxx W/Kg.

SAR information on this and other model phones can be viewed on-line at www.fcc.gov/oet/fccid. To find information that pertains to a particular model phone, this site uses the phone FCC ID number which is usually printed somewhere on the case of the phone. Sometimes it may be necessary to remove the battery pack to find the number. Once you have the FCC ID number for a particular phone, follow the instructions on the website and it should provide values for typical or maximum SAR for a particular phone. Additional product specific SAR information can also be obtained at www.fcc.gov/cgb/sar.

UL Certified Travel Adaptor

The Travel Adaptor for this phone has met UL 1310 safety requirements. Please adhere to the following safety instructions per UL guidelines.

FAILURE TO FOLLOW THE INSTRUCTIONS
OUTLINED MAY LEAD TO SERIOUS PERSONAL
INJURY AND POSSIBLE PROPERTY DAMAGE

IMPORTANT SAFETY INSTRUCTIONS - SAVE THESE
INSTRUCTIONS.

DANGER - TO REDUCE THE RISK OF FIRE OR
ELECTRIC SHOCK, CAREFULLY FOLLOW THESE
INSTRUCTIONS.

FOR CONNECTION TO A SUPPLY NOT IN THE
U.S.A., USE AN ATTACHMENT PLUG ADAPTOR OF
THE PROPER CONFIGURATION FOR THE POWER
OUTLET.

Consumer Information on Wireless Phones

The U.S. Food and Drug Administration (FDA) has published a series of Questions and Answers for consumers relating to radio frequency (RF) exposure from wireless phones. The FDA publication includes the following information:

What kinds of phones are the subject of this update?

The term wireless phone refers here to hand-held wireless phones with built-in antennas, often called "cell," "mobile," or "PCS" phones. These types of wireless phones can expose the user to measurable radio frequency energy (RF) because of the short distance between the phone and the user's head. These RF exposures are limited by Federal Communications Commission safety guidelines that were developed with the advice of FDA and other federal health and safety agencies. When the phone is located at greater

distances from the user, the exposure to RF is drastically lower because a person's RF exposure decreases rapidly with increasing distance from the source. The so-called "cordless phones," which have a base unit connected to the telephone wiring in a house, typically operate at far lower power levels, and thus produce RF exposures well within the FCC's compliance limits.

Do wireless phones pose a health hazard?

The available scientific evidence does not show that any health problems are associated with using wireless phones. There is no proof, however, that wireless phones are absolutely safe. Wireless phones emit low levels of radio frequency energy (RF) in the microwave range while being used. They also emit very low levels of RF when in the stand-by mode. Whereas high levels of RF can produce health effects (by heating tissue), exposure to low level RF that does not produce heating effects causes no known adverse health effects. Many studies of low level RF exposures have not found any biological effects. Some studies have suggested that some biological effects may occur, but such findings have not been confirmed by additional research. In some cases, other researchers have had difficulty in reproducing those studies, or in determining the reasons for inconsistent results.

What is FDA's role concerning the safety of wireless phones?

Under the law, FDA does not review the safety of radiation-emitting consumer products such as wireless

phones before they can be sold, as it does with new drugs or medical devices. However, the agency has authority to take action if wireless phones are shown to emit radio frequency energy (RF) at a level that is hazardous to the user. In such a case, FDA could require the manufacturers of wireless phones to notify users of the health hazard and to repair, replace or recall the phones so that the hazard no longer exists.

Although the existing scientific data do not justify FDA regulatory actions, FDA has urged the wireless phone industry to take a number of steps, including the following:

- Support needed research into possible biological effects of RF of the type emitted by wireless phones;
- Design wireless phones in a way that minimizes any RF exposure to the user that is not necessary for device function; and
- Cooperate in providing users of wireless phones with the best possible information on possible effects of wireless phone use on human health.

FDA belongs to an interagency working group of the federal agencies that have responsibility for different aspects of RF safety to ensure coordinated efforts at the federal level. The following agencies belong to this working group:

- National Institute for Occupational Safety and Health
- Environmental Protection Agency
- Federal Communications Commission
- Occupational Safety and Health Administration
- National Telecommunications and Information Administration

The National Institutes of Health participates in some interagency working group activities, as well.

FDA shares regulatory responsibilities for wireless phones with the Federal Communications Commission (FCC). All phones that are sold in the United States must comply with FCC safety guidelines that limit RF exposure. FCC relies on FDA and other health agencies for safety questions about wireless phones.

FCC also regulates the base stations that the wireless phone networks rely upon. While these base stations operate at higher power than do the wireless phones themselves, the RF exposures that people get from these base stations are typically thousands of times lower than those they can get from wireless phones. Base stations are thus not the primary subject of the safety questions discussed in this document.

What are the results of the research done already?

The research done thus far has produced conflicting results, and many studies have suffered from flaws in their research methods. Animal experiments investigating the effects of radio frequency energy (RF) exposures characteristic of wireless phones have yielded conflicting results that often cannot be repeated in other laboratories. A few animal studies, however, have suggested that low levels of RF could accelerate the development of cancer in laboratory animals. However, many of the studies that showed increased tumor development used animals that had been genetically engineered or treated with cancer-causing chemicals so as to be pre-disposed to develop cancer in absence of RF exposure. Other studies exposed the

animals to RF for up to 22 hours per day. These conditions are not similar to the conditions under which people use wireless phones, so we don't know with certainty what the results of such studies mean for human health.

Three large epidemiology studies have been published since December 2000. Between them, the studies investigated any possible association between the use of wireless phones and primary brain cancer, glioma, meningioma, or acoustic neuroma, tumors of the brain or salivary gland, leukemia, or other cancers. None of the studies demonstrated the existence of any harmful health effects from wireless phones RF exposures. However, none of the studies can answer questions about long-term exposures, since the average period of phone use in these studies was around three years.

What research is needed to decide whether RF exposure from wireless phones poses a health risk?

A combination of laboratory studies and epidemiological studies of people actually using wireless phones would provide some of the data that are needed. Lifetime animal exposure studies could be completed in a few years. However, very large numbers of animals would be needed to provide reliable proof of a cancer promoting effect if one exists. Epidemiological studies can provide data that is directly applicable to human populations, but ten or more years' follow-up may be needed to provide answers about some health effects, such as cancer. This is because the interval between the time of exposure to a cancer-causing agent and the time tumors develop - if

they do - may be many, many years. The interpretation of epidemiological studies is hampered by difficulties in measuring actual RF exposure during day-to-day use of wireless phones. Many factors affect this measurement, such as the angle at which the phone is held, or which model of phone is used.

What is FDA doing to find out more about the possible health effects of wireless phone RF?

FDA is working with the U.S. National Toxicology Program and with groups of investigators around the world to ensure that high priority animal studies are conducted to address important questions about the effects of exposure to radio frequency energy (RF).

FDA has been a leading participant in the World Health Organization international Electromagnetic Fields (EMF) Project since its inception in 1996. An influential result of this work has been the development of a detailed agenda of research needs that has driven the establishment of new research programs around the world. The Project has also helped develop a series of public information documents on EMF issues.

FDA and Cellular Telecommunications & Internet Association (CTIA) have a formal Cooperative Research and Development Agreement (CRADA) to do research on wireless phone safety. FDA provides the scientific oversight, obtaining input from experts in government, industry, and academic organizations. CTIA-funded research is conducted through contracts to independent investigators. The initial research will include both laboratory studies and studies of wireless phone users. The CRADA will also include a broad

assessment of additional research needs in the context of the latest research developments around the world.

What steps can I take to reduce my exposure to radio frequency energy from my wireless phone?

If there is a risk from these products - and at this point we do not know that there is - it is probably very small. But if you are concerned about avoiding even potential risks, you can take a few simple steps to minimize your exposure to radio frequency energy (RF). Since time is a key factor in how much exposure a person receives, reducing the amount of time spent using a wireless phone will reduce RF exposure.

- If you must conduct extended conversations by wireless phone every day, you could place more distance between your body and the source of the RF, since the exposure level drops off dramatically with distance. For example, you could use a headset and carry the wireless phone away from your body or use a wireless phone connected to a remote antenna.

Again, the scientific data do not demonstrate that wireless phones are harmful. But if you are concerned about the RF exposure from these products, you can use measures like those described above to reduce your RF exposure from wireless phone use.

What about children using wireless phones?

The scientific evidence does not show a danger to users of wireless phones, including children and teenagers. If you want to take steps to lower exposure to radio frequency energy (RF), the measures described above would apply to children and teenagers using wireless phones. Reducing the time of wireless phone use and

increasing the distance between the user and the RF source will reduce RF exposure.

Some groups sponsored by other national governments have advised that children be discouraged from using wireless phones at all. For example, the government in the United Kingdom distributed leaflets containing such a recommendation in December 2000. They noted that no evidence exists that using a wireless phone causes brain tumors or other ill effects. Their recommendation to limit wireless phone use by children was strictly precautionary; it was not based on scientific evidence that any health hazard exists.

Do hands-free kits for wireless phones reduce risks from exposure to RF emissions?

Since there are no known risks from exposure to RF emissions from wireless phones, there is no reason to believe that hands-free kits reduce risks. Hands-free kits can be used with wireless phones for convenience and comfort. These systems reduce the absorption of RF energy in the head because the phone, which is the source of the RF emissions, will not be placed against the head. On the other hand, if the phone is mounted against the waist or other part of the body during use, then that part of the body will absorb more RF energy. Wireless phones marketed in the U.S. are required to meet safety requirements regardless of whether they are used against the head or against the body. Either configuration should result in compliance with the safety limit.

Do wireless phone accessories that claim to shield the head from RF radiation work?

Since there are no known risks from exposure to RF emissions from wireless phones, there is no reason to believe that accessories that claim to shield the head from those emissions reduce risks. Some products that claim to shield the user from RF absorption use special phone cases, while others involve nothing more than a metallic accessory attached to the phone. Studies have shown that these products generally do not work as advertised. Unlike "hand-free" kits, these so-called "shields" may interfere with proper operation of the phone. The phone may be forced to boost its power to compensate, leading to an increase in RF absorption. In February 2002, the Federal Trade Commission (FTC) charged two companies that sold devices that claimed to protect wireless phone users from radiation with making false and unsubstantiated claims. According to FTC, these defendants lacked a reasonable basis to substantiate their claim.

What about wireless phone interference with medical equipment?

Radio frequency energy (RF) from wireless phones can interact with some electronic devices. For this reason, FDA helped develop a detailed test method to measure electromagnetic interference (EMI) of implanted cardiac pacemakers and defibrillators from wireless telephones. This test method is now part of a standard sponsored by the Association for the Advancement of Medical Instrumentation (AAMI). The final draft, a joint effort by FDA, medical device manufacturers, and

many other groups, was completed in late 2000. This standard will allow manufacturers to ensure that cardiac pacemakers and defibrillators are safe from wireless phone EMI. FDA has tested wireless phones and helped develop a voluntary standard sponsored by the Institute of Electrical and Electronic Engineers (IEEE). This standard specifies test methods and performance requirements for hearing aids and wireless phones so that no interference occurs when a person uses a compatible phone and a compatible hearing aid at the same time. This standard was approved by the IEEE in 2000.

FDA continues to monitor the use of wireless phones for possible interactions with other medical devices. Should harmful interference be found to occur, FDA will conduct testing to assess the interference and work to resolve the problem.

Additional information on the safety of RF exposures from various sources can be obtained from the following organizations:

- FCC RF Safety Program:
<http://www.fcc.gov/oet/rfsafety/>
- Environmental Protection Agency (EPA):
<http://www.epa.gov/radiation/>
- Occupational Safety and Health Administration's (OSHA):
<http://www.osha-slc.gov/SLTC/radiofrequencyradiation/index.html>
- National Institute for Occupational Safety and Health (NIOSH):
<http://www.cdc.gov/niosh/topics/emf/>
- World Health Organization (WHO):
<http://www.who.int/peh-emf/>

- International Commission on Non-Ionizing Radiation Protection:
<http://www.icnirp.de>
- National Radiation Protection Board (UK):
<http://www.nrpb.org.uk>
- US food and Drug Administration
<http://www.fda.gov/cellphones>

Road Safety

Your wireless phone gives you the powerful ability to communicate by voice, almost anywhere, anytime. But an important responsibility accompanies the benefits of wireless phones, one that every user must uphold.

When driving a car, driving is your first responsibility. When using your wireless phone behind the wheel of a car, practice good common sense and remember the following tips:

1. Get to know your wireless phone and its features, such as speed dial and redial. If available, these features help you to place your call without taking your attention off the road.
2. When available, use a hands-free device. If possible, add an additional layer of convenience and safety to your wireless phone with one of the many hands free accessories available today.
3. Position your wireless phone within easy reach. Be able to access your wireless phone without removing your eyes from the road. If you get an incoming call at an inconvenient time, let your voice mail answer it for you.

4. Let the person you are speaking with know you are driving; if necessary, suspend the call in heavy traffic or hazardous weather conditions. Rain, sleet, snow, ice and even heavy traffic can be hazardous.
5. Do not take notes or look up phone numbers while driving. Jotting down a "to do" list or flipping through your address book takes attention away from your primary responsibility, driving safely.
6. Dial sensibly and assess the traffic; if possible, place calls when you are not moving or before pulling into traffic. Try to plan calls when your car will be stationary. If you need to make a call while moving, dial only a few numbers, check the road and your mirrors, then continue.
7. Do not engage in stressful or emotional conversations that may be distracting. Make people you are talking with aware you are driving and suspend conversations that have the potential to divert your attention from the road.
8. Use your wireless phone to call for help. Dial 9-1-1 or other local emergency number in the case of fire, traffic accident or medical emergencies. Remember, it is a free call on your wireless phone!
9. Use your wireless phone to help others in emergencies. If you see an auto accident, crime in progress or other serious emergency where lives are in danger, call 9-1-1 or other local emergency number, as you would want others to do for you.
10. Call roadside assistance or a special non-emergency wireless assistance number when necessary. If you see a broken-down vehicle posing no serious hazard, a

broken traffic signal, a minor traffic accident where no one appears injured, or a vehicle you know to be stolen, call roadside assistance or other special non-emergency number.

"The wireless industry reminds you to use your phone safely when driving."

For more information, please call 1-888-901-SAFE, or visit our web-site www.wow-com.com

Provided by the Cellular Telecommunications & Internet Association

Operating Environment

Remember to follow any special regulations in force in any area and always switch your phone off whenever it is forbidden to use it, or when it may cause interference or danger. When connecting the phone or any accessory to another device, read its user's guide for detailed safety instructions. Do not connect incompatible products.

As with other mobile radio transmitting equipment, users are advised that for the satisfactory operation of the equipment and for the safety of personnel, it is recommended that the equipment should only be used in the normal operating position (held to your ear with the antenna pointing over your shoulder if you are using an external antenna).

Using Your Phone Near Other Electronic Devices

Most modern electronic equipment is shielded from radio frequency (RF) signals. However, certain electronic equipment may not be shielded against the

RF signals from your wireless phone. Consult the manufacturer to discuss alternatives.

Pacemakers

Pacemaker manufacturers recommend that a minimum distance of 15 cm (6 inches) be maintained between a wireless phone and a pacemaker to avoid potential interference with the pacemaker.

These recommendations are consistent with the independent research and recommendations of Wireless Technology Research.

Persons with pacemakers:

- should always keep the phone more than 15 cm (6 inches) from their pacemaker when the phone is switched on.
- should not carry the phone in a breast pocket.
- should use the ear opposite the pacemaker to minimize potential interference.

If you have any reason to suspect that interference is taking place, switch your phone off immediately.

Hearing Aids

Some digital wireless phones may interfere with some hearing aids. In the event of such interference, you may wish to consult your hearing aid manufacturer to discuss alternatives.

Other Medical Devices

If you use any other personal medical devices, consult the manufacturer of your device to determine if it is adequately shielded from external RF energy. Your physician may be able to assist you in obtaining this information. Switch your phone off in health care facilities when any regulations posted in these areas instruct you to do so. Hospitals or

health care facilities may be using equipment that could be sensitive to external RF energy.

Vehicles

RF signals may affect improperly installed or inadequately shielded electronic systems in motor vehicles. Check with the manufacturer or its representative regarding your vehicle. You should also consult the manufacturer of any equipment that has been added to your vehicle.

Posted Facilities

Switch your phone off in any facility where posted notices require you to do so.

Potentially Explosive Environments

Switch your phone off when in any area with a potentially explosive atmosphere and obey all signs and instructions. Sparks in such areas could cause an explosion or fire resulting in bodily injury or even death.

Users are advised to switch the phone off while at a refueling point (service station). Users are reminded of the need to observe restrictions on the use of radio equipment in fuel depots (fuel storage and distribution areas), chemical plants or where blasting operations are in progress.

Areas with a potentially explosive atmosphere are often but not always clearly marked. They include below deck on boats, chemical transfer or storage facilities, vehicles using liquefied petroleum gas (such as propane or butane), areas where the air contains


chemicals or particles, such as grain, dust or metal powders, and any other area where you would normally be advised to turn off your vehicle engine.

Emergency Calls

This phone, like any wireless phone, operates using radio signals, wireless and landline networks as well as user-programmed functions, which cannot guarantee connection in all conditions. Therefore, you should never rely solely on any wireless phone for essential communications (medical emergencies, for example).

Remember, to make or receive any calls the phone must be switched on and in a service area with adequate signal strength. Emergency calls may not be possible on all wireless phone networks or when certain network services and/or phone features are in use. Check with local service providers.

To make an emergency call:

1. If the phone is not on, switch it on.
2. Key in the emergency number for your present location (for example, 911 or other official emergency number). Emergency numbers vary by location.
3. Press the  key.

If certain features are in use (call barring, for example), you may first need to deactivate those features before you can make an emergency call. Consult this document and your local cellular service provider.

When making an emergency call, remember to give all the necessary information as accurately as possible. Remember that your phone may be the only means of

communication at the scene of an accident; do not cut off the call until given permission to do so.

Restricting Children's access to your Phone

Your phone is not a toy. Children should not be allowed to play with it because they could hurt themselves and others, damage the phone or make calls that increase your phone bill.

FCC Notice and Cautions

FCC Notice

The phone may cause TV or radio interference if used in close proximity to receiving equipment. The FCC can require you to stop using the phone if such interference cannot be eliminated.

Vehicles using liquefied petroleum gas (such as propane or butane) must comply with the National Fire Protection Standard (NFPA-58). For a copy of this standard, contact the National Fire Protection Association, One Batterymarch Park, Quincy, MA 02269, Attn: Publication Sales Division.

Cautions

Any changes or modifications to your phone not expressly approved in this document could void your warranty for this equipment, and void your authority to operate this equipment. Only use approved batteries, antennas and chargers. The use of any unauthorized accessories may be dangerous and void the phone warranty if said accessories cause damage or a defect to the phone.

Although your phone is quite sturdy, it is a complex piece of equipment and can be broken. Avoid dropping, hitting, bending or sitting on it.

Other Important Safety Information

- Only qualified personnel should service the phone or install the phone in a vehicle. Faulty installation or service may be dangerous and may invalidate any warranty applicable to the device.
- Check regularly that all wireless phone equipment in your vehicle is mounted and operating properly.
- Do not store or carry flammable liquids, gases or explosive materials in the same compartment as the phone, its parts or accessories.
- For vehicles equipped with an air bag, remember that an air bag inflates with great force. Do not place objects, including both installed or portable wireless equipment in the area over the air bag or in the air bag deployment area. If wireless equipment is improperly installed and the air bag inflates, serious injury could result.
- Switch your phone off before boarding an aircraft. The use of wireless phone in aircraft is illegal and may be dangerous to the aircraft's operation.
- Failure to observe these instructions may lead to the suspension or denial of telephone services to the offender, or legal action, or both.

Product Performance

Getting the Most Out of Your Signal Reception

The quality of each call you make or receive depends on the signal strength in your area. Your phone informs you of the current signal strength by displaying a number of bars next to the signal strength icon. The more bars displayed, the stronger the signal.

If you're inside a building, being near a window may give you better reception.

Understanding the Power Save Feature

If your phone is unable to find a signal after 15 minutes of searching, a Power Save feature is automatically activated. If your phone is active, it periodically rechecks service availability or you can check it yourself by pressing any key.

Anytime the Power Save feature is activated, a message displays on the screen. When a signal is found, your phone returns to standby mode.

Understanding How Your Phone Operates

Your phone is basically a radio transmitter and receiver. When it's turned on, it receives and transmits radio frequency (RF) signals. When you use your phone, the system handling your call controls the power level. This power can range from 0.006 watts to 0.2 watts in digital mode.

Maintaining Your Phone's Peak Performance

For the best care of your phone, only authorized personnel should service your phone and accessories. Faulty service may void the warranty.

There are several simple guidelines to operating your phone properly and maintaining safe, satisfactory service.

- If your phone is equipped with an external antenna, hold the phone with the antenna raised, fully-extended and over your shoulder.
- Do not hold, bend or twist the phone's antenna.

- Do not use the phone if the antenna is damaged.
- If your phone is equipped with an internal antenna, obstructing the internal antenna could inhibit performance.
- Speak directly into the phone's receiver.
- Avoid exposing your phone and accessories to rain or liquid spills. If your phone does get wet, immediately turn the power off and remove the battery. If it is inoperable, call Customer Care for service.

Availability of Various Features/Ring Tones

Many services and features are network dependent and may require additional subscription and/or usage charges. Not all features are available for purchase or use in all areas. Downloadable Ring Tones may be available at an additional cost. Other conditions and restrictions may apply. See your service provider for additional information.

Battery Standby and Talk Time

Standby and talk times will vary depending on phone usage patterns and conditions. Battery power consumption depends on factors such as network configuration, signal strength, operating temperature, features selected, frequency of calls, and voice, data, and other application usage patterns.

Battery Precautions

- Avoid dropping the cell phone. Dropping it, especially on a hard surface, can potentially cause damage to the phone and battery. If you suspect damage to the phone or battery, take it to a service center for inspection.
- Never use any charger or battery that is damaged in any way.

- Use the battery only for its intended purpose.
- If you use the phone near the network's base station, it uses less power; talk and standby time are greatly affected by the signal strength on the cellular network and the parameters set by the network operator.
- Follow battery usage, storage and charging guidelines found in the user's guide.
- Battery charging time depends on the remaining battery charge and the type of battery and charger used. The battery can be charged and discharged hundreds of times, but it will gradually wear out. When the operation time (talk time and standby time) is noticeably shorter than normal, it is time to buy a new battery.
- If left unused, a fully charged battery will discharge itself over time.
- Use only Samsung-approved batteries and recharge your battery only with Samsung-approved chargers. When a charger is not in use, disconnect it from the power source. Do not leave the battery connected to a charger for more than a week, since overcharging may shorten its life.
- Do not use incompatible cell phone batteries and chargers. Some Web sites and second-hand dealers, not associated with reputable manufacturers and carriers, might be selling incompatible or even counterfeit batteries and chargers. Consumers should purchase manufacturer or carrier recommended products and accessories. If unsure about whether a replacement battery or charger is compatible, contact the manufacturer of the battery or charger.
- Extreme temperatures will affect the charging capacity of your battery: it may require cooling or warming first.
- Do not leave the battery in hot or cold places, such as in a car in summer or winter conditions, as you will reduce the capacity and lifetime of the battery. Always try to keep the battery at room temperature. A phone with a hot or cold battery may temporarily not work, even when the battery is fully charged. Li-ion batteries are particularly affected by temperatures below 0 °C (32 °F).

- Do not place the phone in areas that may get very hot, such as on or near a cooking surface, cooking appliance, iron, or radiator.
- Do not get your phone or battery wet. Even though they will dry and appear to operate normally, the circuitry could slowly corrode and pose a safety hazard.
- Do not short-circuit the battery. Accidental short-circuiting can occur when a metallic object (coin, clip or pen) causes a direct connection between the + and - terminals of the battery (metal strips on the battery), for example when you carry a spare battery in a pocket or bag. Short-circuiting the terminals may damage the battery or the object causing the short-circuiting.
- Do not permit a battery out of the phone to come in contact with metal objects, such as coins, keys or jewelry.
- Do not crush, puncture or put a high degree of pressure on the battery as this can cause an internal short-circuit, resulting in overheating.
- Dispose of used batteries in accordance with local regulations. In some areas, the disposal of batteries in household or business trash may be prohibited. For safe disposal options for Li-Ion batteries, contact your nearest Samsung authorized service center. Always recycle. Do not dispose of batteries in a fire.

Care and Maintenance

Your phone is a product of superior design and craftsmanship and should be treated with care. The suggestions below will help you fulfill any warranty obligations and allow you to enjoy this product for many years

- Keep the phone and all its parts and accessories out of the reach of small children's.
- Keep the phone dry. Precipitation, humidity and liquids contain minerals that will corrode electronic circuits.

- Do not use the phone with a wet hand. Doing so may cause an electric shock to you or damage to the phone.
- Do not use or store the phone in dusty, dirty areas, as its moving parts may be damaged.
- Do not store the phone in hot areas. High temperatures can shorten the life of electronic devices, damage batteries, and warp or melt certain plastics.
- Do not store the phone in cold areas. When the phone warms up to its normal operating temperature, moisture can form inside the phone, which may damage the phone's electronic circuit boards.
- Do not drop, knock or shake the phone. Rough handling can break internal circuit boards.
- Do not use harsh chemicals, cleaning solvents or strong detergents to clean the phone. Wipe it with a soft cloth slightly dampened in a mild soap-and-water solution.
- Do not paint the phone. Paint can clog the device's moving parts and prevent proper operation.
- Do not put the phone in or on heating devices, such as a microwave oven, a stove or a radiator. The phone may explode when overheated.
- If your phone has an external antenna, use only the supplied or an approved replacement antenna. Unauthorized antennas or modified accessories may damage the phone and violate regulations governing radio devices.
- If the phone, battery, charger or any accessory is not working properly, take it to your nearest qualified service facility. The personnel there will assist you, and if necessary, arrange for service.

Section 17: Warranty Information

Topics Covered

- Standard Limited Warranty
-

Standard Limited Warranty

What is Covered and For How Long?

SAMSUNG TELECOMMUNICATIONS AMERICA, L.P. ("SAMSUNG") warrants to the original purchaser ("Purchaser") that SAMSUNG's Phones and accessories ("Products") are free from defects in material and workmanship under normal use and service for the period commencing upon the date of purchase and continuing for the following specified period of time after that date:

Phone	1 Year
Batteries	1 Year
Leather Case/ Pouch	90 Days
Holster	90 Days
Other Phone Accessories	1 Year

What is Not Covered? This Limited Warranty is conditioned upon proper use of Product by Purchaser.

This Limited Warranty does not cover: (a) defects or damage resulting from accident, misuse, abuse, neglect, unusual physical, electrical or electromechanical stress, or modification of any part of Product, including antenna, or cosmetic damage; (b) equipment that has the serial number removed or made illegible; (c) any plastic surfaces or other externally exposed parts that are scratched or damaged due to normal use; (d) malfunctions resulting from the use of Product in conjunction with accessories, products, or ancillary / peripheral equipment not furnished or approved by SAMSUNG; (e) defects or damage from improper testing, operation, maintenance, installation, or adjustment; (f) installation, maintenance, and service of Product, or (g) Product used or purchased outside the United States or Canada. This Limited Warranty covers batteries only if battery capacity falls below 80% of rated capacity or the battery leaks, and this Limited Warranty does not cover any battery if (i) the battery has been charged by a battery charger not specified or approved by SAMSUNG for charging the battery, (ii) any of the seals on the battery are broken or show evidence of tampering, or (iii) the battery has been used in equipment other than the SAMSUNG phone for which it is specified.

What are SAMSUNG's Obligations? During the applicable warranty period, SAMSUNG will repair or replace, at SAMSUNG's sole option, without charge to Purchaser, any defective component part of Product. To obtain service under this Limited Warranty, Purchaser must return Product to an authorized phone service facility in an adequate container for shipping, accompanied by

Purchaser's sales receipt or comparable substitute proof of sale showing the date of purchase, the serial number of Product and the sellers' name and address. To obtain assistance on where to deliver the Product, call Samsung Customer Care at 1-888-987-4357. Upon receipt, SAMSUNG will promptly repair or replace the defective Product. SAMSUNG may, at SAMSUNG's sole option, use rebuilt, reconditioned, or new parts or components when repairing any Product or replace Product with a rebuilt, reconditioned or new Product. Repaired/replaced leather cases, pouches and holsters will be warranted for a period of ninety (90) days. All other repaired/replaced Product will be warranted for a period equal to the remainder of the original Limited Warranty on the original Product or for 90 ays, whichever is longer. All replaced parts, components, boards and equipment shall become the property of SAMSUNG. If SAMSUNG determines that any Product is not covered by this Limited Warranty, Purchaser must pay all parts, shipping, and labor charges for the repair or return of such Product.

WHAT ARE THE LIMITS ON SAMSUNG'S WARRANTY/LIABILITY?

EXCEPT AS SET FORTH IN THE EXPRESS WARRANTY CONTAINED HEREIN, PURCHASER TAKES THE PRODUCT "AS IS," AND SAMSUNG MAKES NO WARRANTY OR REPRESENTATION AND THERE ARE NO CONDITIONS, EXPRESS OR IMPLIED, STATUTORY OR OTHERWISE, OF ANY KIND WHATSOEVER WITH RESPECT TO THE PRODUCT, INCLUDING BUT NOT LIMITED TO:

- THE MERCHANTABILITY OF THE PRODUCT OR ITS FITNESS FOR ANY PARTICULAR PURPOSE OR USE;

- WARRANTIES OF TITLE OR NON-INFRINGEMENT;
- DESIGN, CONDITION, QUALITY, OR PERFORMANCE OF THE PRODUCT;
- THE WORKMANSHIP OF THE PRODUCT OR THE COMPONENTS CONTAINED THEREIN; OR
- COMPLIANCE OF THE PRODUCT WITH THE REQUIREMENTS OF ANY LAW, RULE, SPECIFICATION OR CONTRACT PERTAINING THERETO.

NOTHING CONTAINED IN THE INSTRUCTION MANUAL SHALL BE CONSTRUED TO CREATE AN EXPRESS WARRANTY OF ANY KIND WHATSOEVER WITH RESPECT TO THE PRODUCT. ALL IMPLIED WARRANTIES AND CONDITIONS THAT MAY ARISE BY OPERATION OF LAW, INCLUDING IF APPLICABLE THE IMPLIED WARRANTIES OF MERCHANTABILITY AND FITNESS FOR A PARTICULAR PURPOSE, ARE HEREBY LIMITED TO THE SAME DURATION OF TIME AS THE EXPRESS WRITTEN WARRANTY STATED HEREIN. SOME STATES/PROVINCES DO NOT ALLOW LIMITATIONS ON HOW LONG AN IMPLIED WARRANTY LASTS, SO THE ABOVE LIMITATION MAY NOT APPLY TO YOU. IN ADDITION, SAMSUNG SHALL NOT BE LIABLE FOR ANY DAMAGES OF ANY KIND RESULTING FROM THE PURCHASE, USE, OR MISUSE OF, OR INABILITY TO USE THE PRODUCT OR ARISING DIRECTLY OR INDIRECTLY FROM THE USE OR LOSS OF USE OF THE PRODUCT OR FROM THE BREACH OF THE EXPRESS WARRANTY, INCLUDING INCIDENTAL, SPECIAL,

CONSEQUENTIAL OR SIMILAR DAMAGES, OR LOSS OF ANTICIPATED PROFITS OR BENEFITS, OR FOR DAMAGES ARISING FROM ANY TORT (INCLUDING NEGLIGENCE OR GROSS NEGLIGENCE) OR FAULT COMMITTED BY SAMSUNG, ITS AGENTS OR EMPLOYEES, OR FOR ANY BREACH OF CONTRACT OR FOR ANY CLAIM BROUGHT AGAINST PURCHASER BY ANY OTHER PARTY. SOME STATES/PROVINCES DO NOT ALLOW THE EXCLUSION OR LIMITATION OF INCIDENTAL OR CONSEQUENTIAL DAMAGES, SO THE ABOVE LIMITATION OR EXCLUSION MAY NOT APPLY TO YOU. THIS WARRANTY GIVES YOU SPECIFIC LEGAL RIGHTS, AND YOU MAY ALSO HAVE OTHER RIGHTS, WHICH VARY FROM STATE TO STATE/PROVINCE TO PROVINCE. THIS LIMITED WARRANTY SHALL NOT EXTEND TO ANYONE OTHER THAN THE ORIGINAL PURCHASER OF THIS PRODUCT AND STATES PURCHASER'S EXCLUSIVE REMEDY. IF ANY PORTION OF THIS LIMITED WARRANTY IS HELD ILLEGAL OR UNENFORCEABLE BY REASON OF ANY LAW, SUCH PARTIAL ILLEGALITY OR UNENFORCEABILITY SHALL NOT AFFECT THE ENFORCEABILITY FOR THE REMAINDER OF THIS LIMITED WARRANTY WHICH PURCHASER ACKNOWLEDGES IS AND WILL ALWAYS BE CONSTRUED TO BE LIMITED BY ITS TERMS OR AS LIMITED AS THE LAW PERMITS. THE PARTIES UNDERSTAND THAT THE PURCHASER MAY USE THIRD-PARTY SOFTWARE OR EQUIPMENT IN CONJUNCTION WITH THE PRODUCT. SAMSUNG

MAKES NO WARRANTIES OR REPRESENTATIONS AND THERE ARE NO CONDITIONS, EXPRESS OR IMPLIED, STATUTORY OR OTHERWISE, AS TO THE QUALITY, CAPABILITIES, OPERATIONS, PERFORMANCE OR SUITABILITY OF ANY THIRDPARTY SOFTWARE OR EQUIPMENT, WHETHER SUCH THIRD-PARTY SOFTWARE OR EQUIPMENT IS INCLUDED WITH THE PRODUCT DISTRIBUTED BY SAMSUNG OR OTHERWISE, INCLUDING THE ABILITY TO INTEGRATE ANY SUCH SOFTWARE OR EQUIPMENT WITH THE PRODUCT. THE QUALITY, CAPABILITIES, OPERATIONS, PERFORMANCE AND SUITABILITY OF ANY SUCH THIRD-PARTY SOFTWARE OR EQUIPMENT LIE SOLELY WITH THE PURCHASER AND THE DIRECT VENDOR, OWNER OR SUPPLIER OF SUCH THIRD-PARTY SOFTWARE OR EQUIPMENT, AS THE CASE MAY BE.

This Limited Warranty allocates risk of Product failure between Purchaser and SAMSUNG, and SAMSUNG's Product pricing reflects this allocation of risk and the limitations of liability contained in this Limited Warranty. The agents, employees, distributors, and dealers of SAMSUNG are not authorized to make modifications to this Limited Warranty, or make additional warranties binding on SAMSUNG. Accordingly, additional statements such as dealer advertising or presentation, whether oral or written, do not constitute warranties by SAMSUNG and should not be relied upon.

Samsung Telecommunications America, L.P.

1301 East Lookout Drive

Richardson, Texas 75082

Phone: 1-800-SAMSUNG

Phone: 1-888-987-HELP (4357)

©2006 Samsung Telecommunications America. All rights reserved.

No reproduction in whole or in part allowed without prior written approval. Specifications and availability subject to change without notice.

Index

A

Accessing a Menu Function 68

B

Battery

- charging 10
- installing 9
- low indicator 12
- removing 7

Battery Charger 13

C

Charging battery 10

Cingular Mall 97

Cingular Music

- Community 86
- Exit 82
- Help me out 82
- ID song! 81
- Manage ID's 82
- Music Video 83
- Music Video Options 84
- The Buzz 85

Cingular Video 87

- Alerts 92
- Customizing 92
- Favorites 92
- My Purchases 93
- Parental Controls 94

G

Games 98

Getting Started 7

- Activating Your Phone 7

Graphics 99, 100

H

Health and Safety Information 179

212

J

Java 145

L

Low battery indicator 12

M

Media Clip

- Options 88

Menu Navigation 67

Music Apps 86

Music Channel 83

P

Powering on/off

- phone 14

S

Shop Music 80

Shop Tones 97

Shortcuts 68

SIM card

- installing 8
- removing 9

Standard Limited Warranty

205

Streaming Music 83

- Streaming a Music Channel 83

T

Travel adapter 10

U

Understanding Your Phone 17

- Front View of Your Phone 18, 21

V

Video Categories 91

Video Clip

- Viewing 84, 91

W

Warranty Information 205

X

XM Radio 83

Free Manuals Download Website

<http://myh66.com>

<http://usermanuals.us>

<http://www.somanuals.com>

<http://www.4manuals.cc>

<http://www.manual-lib.com>

<http://www.404manual.com>

<http://www.luxmanual.com>

<http://aubethermostatmanual.com>

Golf course search by state

<http://golfingnear.com>

Email search by domain

<http://emailbydomain.com>

Auto manuals search

<http://auto.somanuals.com>

TV manuals search

<http://tv.somanuals.com>