



SAMSUNG

M2 Portable Series

USER MANUAL

External Hard Drive

M2 Portable

- HX-M250UAB · HX-M640UAB
- HX-M250UAE · HX-M640UAE
- HX-M250UAA · HX-M640UAA
- HX-M250UAY · HX-M640UAY
- HX-M320UAB · HX-M750UAB
- HX-M320UAE · HX-M750UAE
- HX-M320UAA · HX-M750UAA
- HX-M320UAY · HX-M750UAY
- HX-M500UAB · HX-M101UAB
- HX-M500UAE · HX-M101UAE
- HX-M500UAA · HX-M101UAA
- HX-M500UAY · HX-M101UAY

M2 Portable 3.0

- HX-M250TAB · HX-M640TAB
- HX-M250TAE · HX-M640TAE
- HX-M250TAA · HX-M640TAA
- HX-M250TAY · HX-M640TAY
- HX-M320TAB · HX-M750TAB
- HX-M320TAE · HX-M750TAE
- HX-M320TAA · HX-M750TAA
- HX-M320TAY · HX-M750TAY
- HX-M500TAB · HX-M101TAB
- HX-M500TAE · HX-M101TAE
- HX-M500TAA · HX-M101TAA
- HX-M500TAY · HX-M101TAY

Read Me First

About this Manual

Your product comes with a quick start guide and a user's manual. Following the instructions and precautions of this manual will ensure easier and more enjoyable use of your M2 Portable Series External Hard Drive.

Quick Start Guide

A start guide is provided with the purchase of M2 Portable Series External Hard Drive. The quick start guide explains product components and provides simple instructions on how to install the product.

User's Manual




The User's Manual contains detailed information about features and instructions on using your M2 Portable Series External Hard Drive.


Using this Manual

Carefully read and understand the "Handling Precautions" section before using the product. Failure to follow all the instructions as outlined in the Handling Precautions section could result in damage to you or to your M2 Portable Series External Hard Drive.

- Refer to the Troubleshooting section first if you experience a problem with the product.

Icon Guide

Icon		Meaning
	Precautions	These must be read thoroughly before using any of the functions.
	Caution	This contains must-know information about functions. User must be careful.
	Note	This contains useful information about the functions.

 Software and user's manuals are available for download at the Samsung External Hard Drive website (www.samsunghdd.com). The content of this User's Manual may change without prior notice for product improvement purposes.

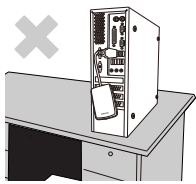
Handling Precautions

The following information serves to ensure user's safety and prevent damage to user's properties. Carefully read the information provided and use your product correctly.

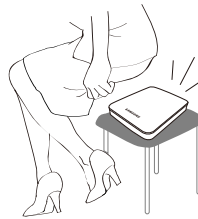
Supplied with the rated USB BUS Power

M2 Portable Series must use the USB Bus Power. Please connect to the USB Port supplied with the rated USB BUS Power.

Installation Related



Use the product on a flat surface.



Do not sit on the product and do not place a heavy object over the product.

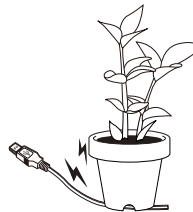
Product case or connector can be damaged and may cause a break down.

Data Cable Usage



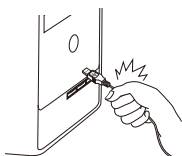
Standardized data cable.

This may increase the wrong operation and may cause a malfunction.



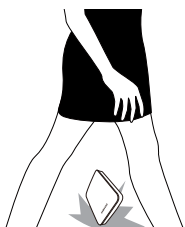
Do not severely bend the data cable and do not place a heavy object over the data cable.

If the data cable is damaged, it may cause a malfunction.



Do not unplug the data cable by severely pulling the cable.

This may damage connector on the product and may cause a problem with the product.



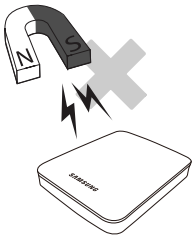
Shock

The external drive is very portable and you may easily drop it. Take care not to drop and tip the product while carrying the External Hard Drive. If you make an impact on the External Hard Drive, it may cause bad sectors on the disk. Bad sectors can cause various and potentially read/write errors.



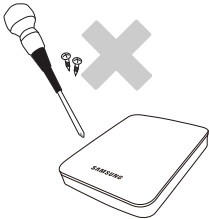
Humidity

If you use the product in places exposed to humidity, it may danger of electric shock. In addition, prolonged exposure to moisture can corrode various parts and components.



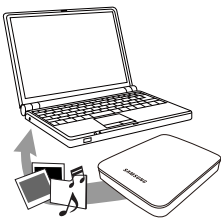
Magnets

Magnetic objects can cause various types of damage to the External Hard Drive, including data damage. Keep magnets and magnetic objects away from the external drive.



Disassembly and Label Removal

For repair, please visit the designated (samsung) customer service center. Unauthorized disassembly, repair, or reform of the product and unauthorized removal of the labeling will void your warranty.



Always Backup your Important Data

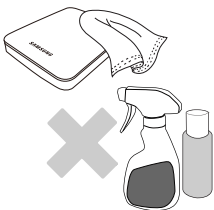
The external drive manufacturer does not guarantee data stored in the External Hard Drive and will not assume responsibility for any mental or material damage incurred during data recovery.

- Backup : Storing the original and a copy on two or more separate and accessible storage media.



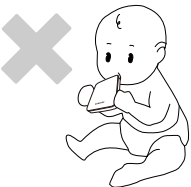
Regular Virus Scanning

Frequently scan the device for viruses and protect the External Hard Drive from virus infection.



Cleaning the product

Never use cleaning fluid or similar chemicals. Do not spray cleaner directly on the product. It may cause discoloration and deformation of the product.



Custody Related

Keep the product and accessories out of the reach of children. It may cause personal injuries and problem.

Safely Remove Hardware

Always use the Safely Remove Hardware feature before shutting down the External Hard Drive or disconnecting the USB cable and power cable.

1MB=1,000,000bytes / 1GB=1,000,000,000bytes / 1TB=1,000,000,000,000bytes

Actual accessible capacity may vary from advertised capacity due to formatting and partitioning of the hard drive, as well as due to your computer's operating system.

Table of Contents

Read Me First	2	About this Manual
	2	Quick Installation Guide
	2	User's Manual
	2	Using this Manual
	2	Icon Guide
Handling Precautions	3	Supplied with the rated USB BUS Power
	3	Installation Related
	3	Data Cable Usage
	3	Shock
	3	Humidity
	4	Magnets
	4	Disassembly and Label Removal
	4	Always Backup your Important Data
	4	Regular Virus Scanning
	4	Cleaning the product
	4	Custody Related
	4	Safely Remove Hardware
Introduction	6	Introduction
Specifications	7	M2 Portable
	8	M2 Portable 3.0
Connecting your M2 Portable Series	9	Installation
	11	Windows
	12	Macintosh
Using your M2 Portable Series	13	Copying / Moving Files
	13	Removable Disk Method
	15	Safely Removing your M2 Portable Series
	15	For Windows
	16	For Macintosh
Troubleshooting	17	FAQ
Appendix	18	Partitioning and Changing File System Type
	18	Reformat to FAT32
	18	Reformat to NTFS32
	18	Format in Macintosh
	19	Product Certifications
	19	FCC
	20	Warranty Information

Introduction

The M2 Portable Series External Hard Drive is a high-performance external hard drive that supports USB *. Unlike conventional desktop disk drives, the M2 Portable Series External Hard Drive makes it possible for you to instantaneously add greater storage capacity to your system without having to take the computer apart.

This means that your M2 Portable Series External Hard Drive comes fully partitioned and formatted for your use and you can instantly access to the drive by simply plugging it into your computer through a USB port.

* M2 Portable : USB 2.0
M2 Portable 3.0 : USB 3.0

Specifications (M2 Portable)

Category	M2 Portable
Interface	USB 2.0
Transfer Rate	480 Mbps Max.
Power	USB Host Power
Operating System	Windows XP / Vista / 7
	Mac OS X 10.4.8 or Later
Hard Disk Capacity	250GB / 320GB / 500GB / 640GB / 750GB / 1TB
Dimensions (W x H x L)	81.90mm X 111.00mm X 17.60mm
Color	Mist Gray, Noble Beige, Brown Black, Clay Orange
Format System	NTFS

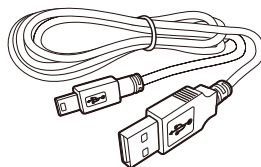
System Requirements

- PC : Windows XP / Vista / 7
- Macintosh : Mac OS X 10.4.8 or Later
- Upgrade your operating system to the latest version to enjoy better performance and reliability.

Components



M2 Portable



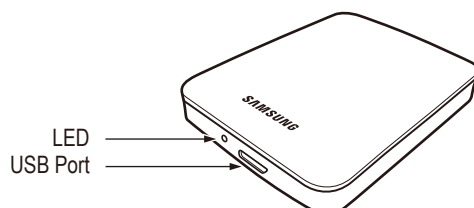
USB 2.0 Cable



Quick Start Guide

※ When you purchase a M2 Portable External Hard Drive, make sure that all components have been included in your product package.

Overview



LED
USB Port



LED Description

- 1) Standby Status : Steadily lit LED
- 2) Read/Write in Progress : Blinking LED

➤ Some computers supply limited USB bus power. If your drive doesn't power on after connecting the USB cable, you may need to purchase a USB Y-cable from retailers or online shops.

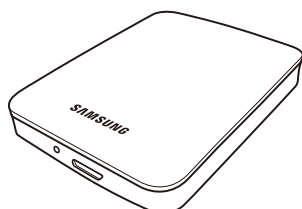
Specifications (M2 Portable 3.0)

Category	M2 Portable 3.0
Interface	USB 3.0
Transfer Rate	5 Gbps Max.
Power	USB Host Power
Operating System	Windows XP / Vista / 7
	Mac OS X 10.4.8 or Later
Hard Disk Capacity	250GB / 320GB / 500GB / 640GB / 750GB / 1TB
Dimensions (W x H x L)	(81.90mm X 111.00mm X 17.60mm)
Color	Mist Gray, Noble Beige, Brown Black, Clay Orange
Format System	NTFS

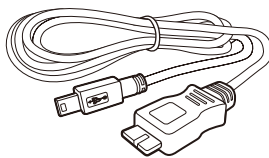
System Requirements

- PC : Windows XP / Vista / 7
- Macintosh : Mac OS X 10.4.8 or Later
- Upgrade your operating system to the latest version to enjoy better performance and reliability.

Components



M2 Portable 3.0



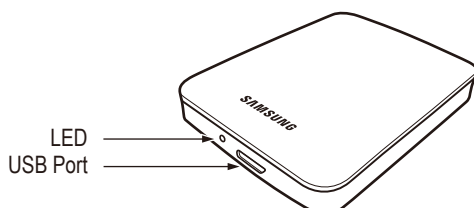
USB 3.0 Micro-B Cable



Quick Start Guide

※ When you purchase a M2 Portable 3.0 External Hard Drive, make sure that all components have been included in your product package.

Overview



LED
USB Port



LED Description

- 1) Standby Status : Steadily lit LED
- 2) Read/Write in Progress : Blinking LED

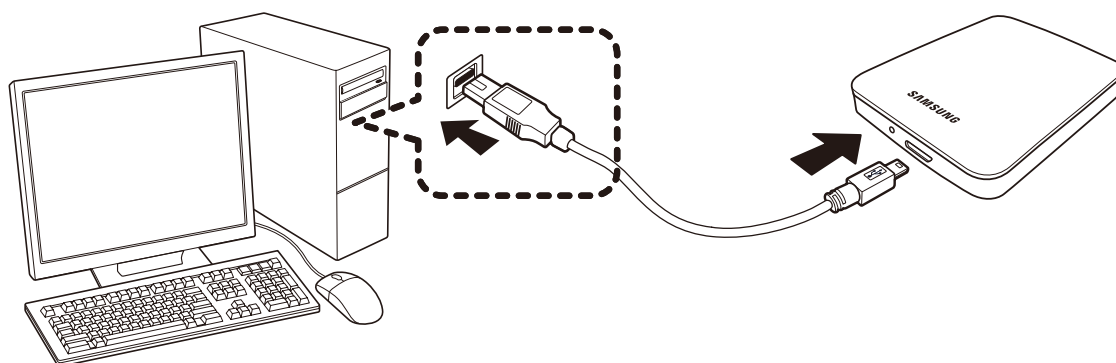
➤ Some computers supply limited USB bus power. If your drive doesn't power on after connecting the USB cable, you may need to purchase a USB Y-cable from retailers or online shops.

Connecting your M2 Portable

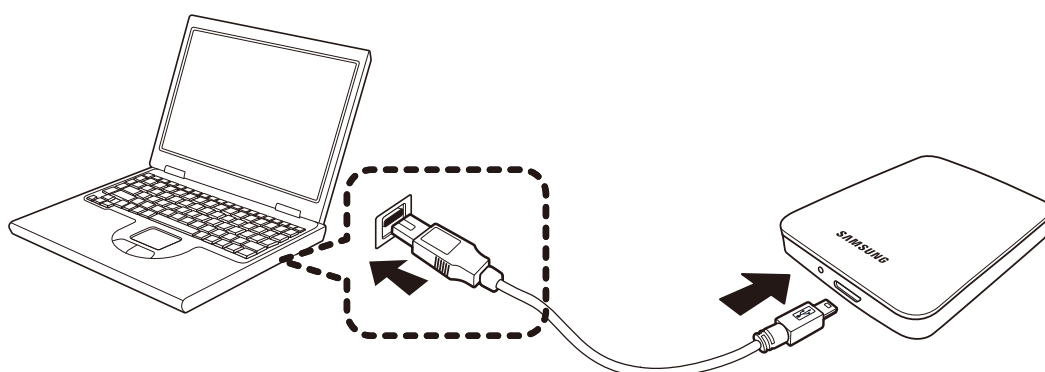
Installation

Verify that the computer meets the minimum system requirements as outlined in #System Requirements. Insert the USB cable to the desktop/laptop computer as shown in Figures 1 and 2:

● Connecting to a Desktop Computer



● Connecting to a Laptop Computer



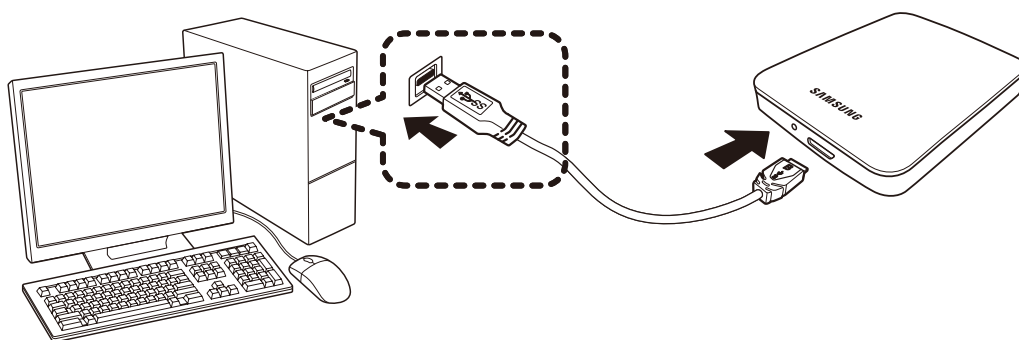
➤ M2 Portable Series External Hard Drive will automatically activate once connected to the computer.

Connecting your M2 Portable 3.0

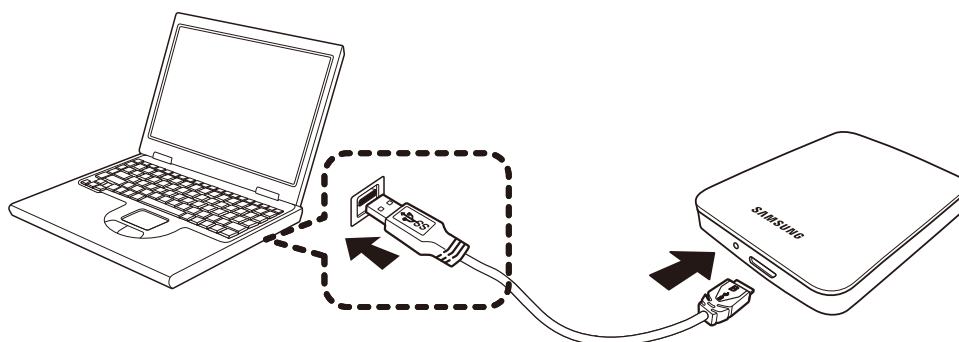
Installation

Verify that the computer meets the minimum system requirements as outlined in #System Requirements. Insert the USB cable to the desktop/laptop computer as shown in Figures 3 and 4:

● Connecting to a Desktop Computer



● Connecting to a Laptop Computer



➤ To use the M2 Portable 3.0 model at its maximum speed, you need a PC or a Host Card that supports USB 3.0 interface.

Windows

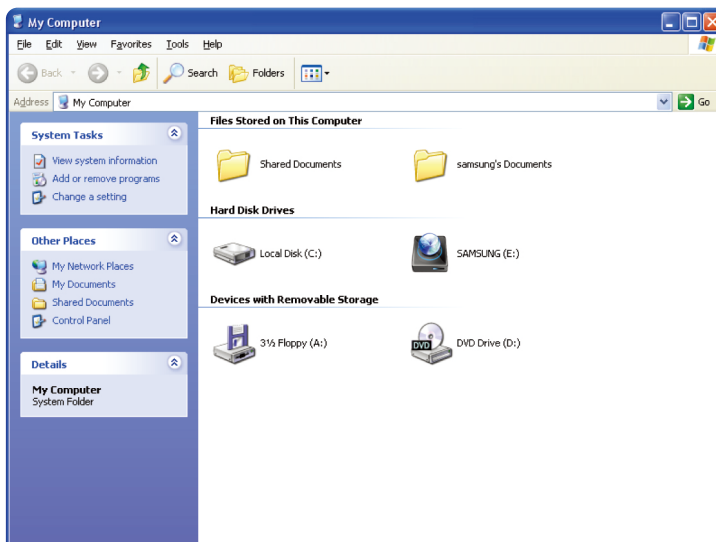
When you connect the M2 Portable Series External Hard Drive to the computer a small icon will appear in the system tray at the lower right corner of the screen.

- **System Tray indicating an external device**



The operating system will recognize and display "Samsung" drive under "My Computer."

- **In the Windows Explorer, you will see a new Samsung drive**



You are now ready to use the Samsung M2 Portable Series External Hard Drive.

Macintosh

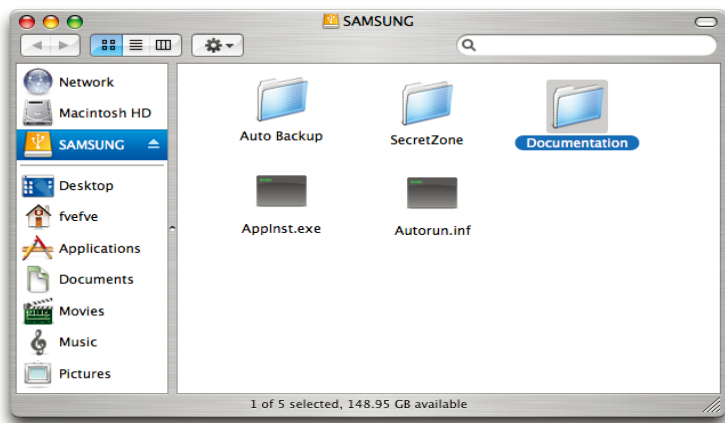
Connect your M2 Portable Series External Hard Drive to the computer. Your Macintosh operating system will then generate a SAMSUNG.

- **Macintosh External Hard Drive connection icon**




After clicking the SAMSUNG icon, the following folder will appear.

- **Macintosh Folders**



You are now ready to use the Samsung M2 Portable Series External Hard Drive.

 Samsung provides Samsung NTFS 3G driver which can be used to write data on NTFS-format External Hard Drives on Mac OS. Samsung NTFS 3G driver can be downloaded from the Samsung website. (<http://www.samsunghdd.com> → Support → Download → External HDD)

Using your M2 Portable Series

Copying / Moving Files

Now that you have successfully installed your new M2 Portable Series External Hard Drive, you copy or move files or whole folders from your new M2 Portable Series to your computer and vice-versa.



It is important to understand the difference between Copy and Move.

Copy : is to make a duplicate folder or file and store it so that you have two copies.

Move : is to take a folder or file from one location and put it into another.

WHEN YOU MOVE A FOLDER OR FILE, YOU NO LONGER HAVE A BACKUP COPY.

Copy and paste files from the computer to the M2 Portable Series External Hard Drive (Removable Disk Method).

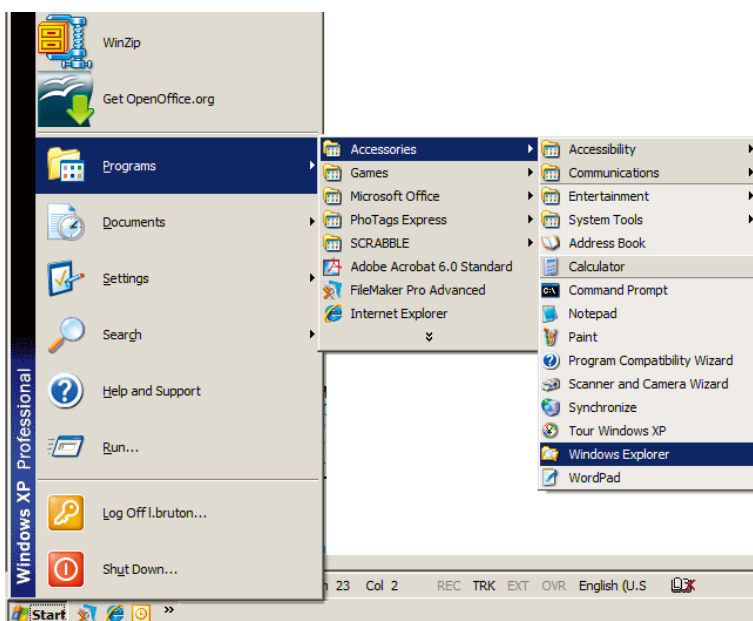
Removable Disk Method

For the purposes of this manual, we will make a copy of the Temp folder on the C drive of your computer and copy it to the M2 Portable Series External Hard Drive.

From the Windows Desktop click:

Start → **Programs** → **Accessories** → **Windows Explorer**

● Getting to the Windows Explorer



From the Windows Explorer, you will see various drive letters; A, C, your C drive is your local Hard Drive.

The M2 Portable Series Drive will most likely be the E drive however, it could be any drive letter.

For the purposes of this manual, we will assume that the M2 Portable Series drive is the E drive.

As well, for practice copying folders and files, we will copy the Temp folder onto the M2 Portable Series drive.

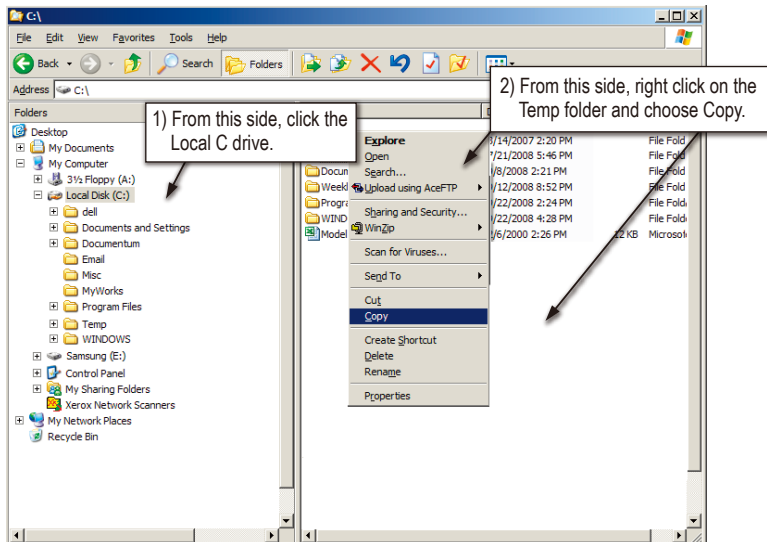
From the Windows Explorer screen:

Click Local Disk C

From the right-hand pane:

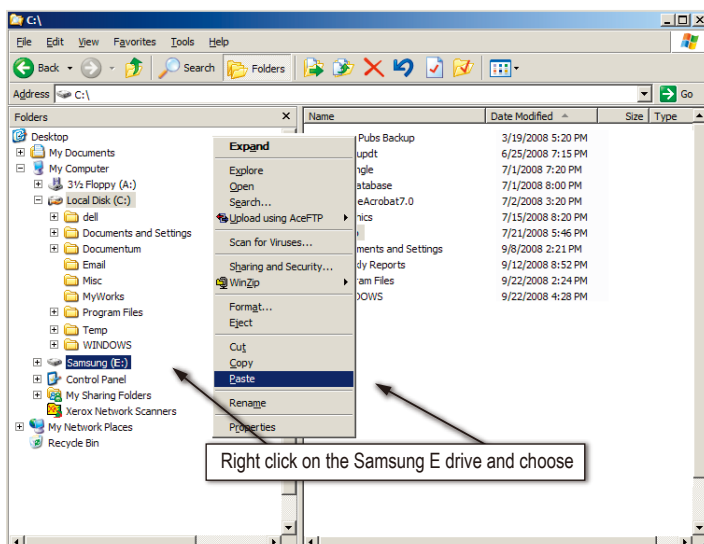
Right-click the Temp folder → Click Copy

- When you Right-Click on a file or folder, you get another menu.



Now, we will copy the Temp folder from the Local C drive, to the Samsung E drive. From the left pane in the Windows Explorer : Right Click Samsung E → Click Paste

- Using a Right-Click again, we can paste the Temp file onto the M2 Portable Series drive.



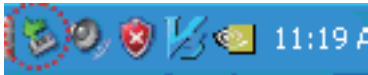
NOTE : Detaching the USB cable while file transfer is in progress can damage your computer and/or M2 Portable Series External Hard Drive. If you need to disconnect the USB cable, wait for the transfer process to complete first and then disconnect using the “Safely Remove Hardware” option.

Sikker fjernelse af din M2 Portable Series

Med Windows

Højreklik på pileikonet i systembakken i det nederste højre hjørne af din skærm.

- Procesbjælken befinder sig nederst til højre på skærmen.



Klik "Sikker fjernelse af hardware"

- Prompten 'Sikker fjernelse af hardware' vil opliste alle enheder, der er tilkoblet dit system.



Klik Samsung M2 Portable Series USB-enhed

- Denne prompt oplyster alle lagerenheder, såsom din lokale harddisk og din M2 Portable Series-harddisk

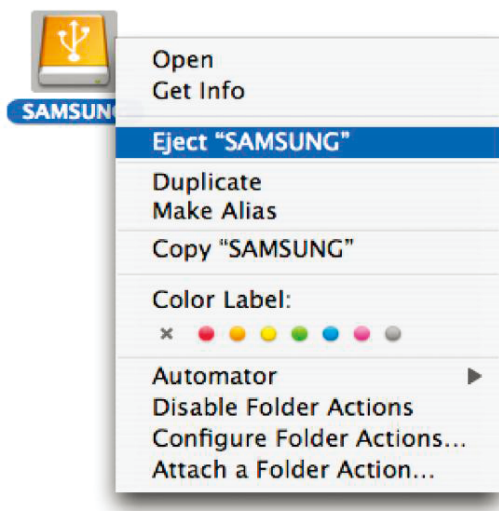


Når du ser meddelelsen "Sikker fjernelse af hardware", kan du sikkert fjerne enheden fra systemet.

For Macintosh

Click the external hard drive icon and select "Eject "SAMSUNG.""

- For the Macintosh click the USB icon and choose Eject "SAMSUNG"



This safely disconnects the drive. It is now safe to detach the drive from the computer.

- ! Do not disconnect M2 Portable Series External Hard Drive's USB cable from the computer while file transfer is in progress. Interrupting the file transfer could lead to data corruption and/or damage to your M2 Portable Series External Hard Drive.

Troubleshooting

- Check the USB cable connection.
- Check the LED light on the External Hard Drive.
- Check the power supply to M2 Portable Series External Hard Drive.
 - Ticking noise is an indication of insufficient power.
- If the drive is not being recognized, try plugging it into a different USB port.

FAQ

Q1. File transfer takes too long.

A1. - USB 2.0

You will experience slow file transfer speeds if your computer does not support USB 2.0 or if you do not connect M2 Portable Series External Hard Drive to a USB 2.0 port. Try connecting M2 Portable Series External Hard Drive to a different port or, if your computer does not support USB 2.0, purchase a separate USB 2.0 port.

- USB 3.0

To use the M2 Portable 3.0 model at its Maximum speed, you need a PC or a Host Card that supports USB 3.0 interface and USB 3.0 Cable.

Q2. The actual storage capacity of M2 Portable Series External Hard Drive is different than the capacity shown on the packaging.

A2. Type of file system used for the drive, partitioning arrangement, type of operating system, and various other factors can affect the actual storage capacity displayed by your computer.
(1MB=1,000,000bytes and 1GB=1,000,000,000bytes. 1TB=1,000,000,000,000bytes)

Q3. I connected my M2 Portable Series External Hard Drive, and the computer seems to recognize it, but the drive won't show up under Windows Explorer.

A3. M2 Portable Series External Hard Drive is by default formatted to NTFS and will work normally when you connect it to your computer. However, if the partition has been erased or the file system has been changed to a one that's not recognized by Windows, the drive will not appear under Windows Explorer. Try formatting the drive to FAT32 or NTFS. (Caution : Formatting will erase all data stored in the drive.)

Q4. I am using Windows XP and cannot format the drive to FAT32.

A4. Windows operating systems that followed Windows NT have limited FAT32 formatting to 32GB. Therefore, if you wish to format your M2 Portable Series External Hard Drive to FAT32, you will need to download a format utility from our website.
(Caution : Formatting will erase all data stored in the drive. We recommend that you back up your data before proceeding.)

Q5. My computer will not boot up properly.

A5. If you boot up your system with M2 Portable Series External Hard Drive connected to the computer, it's possible that your system's BIOS is attempting to boot from the External Hard Drive.
Change the BIOS booting sequence or disconnect the External Hard Drive from the system and then try booting again.

Q6. I am using a Mac, and I can't copy files.

A6. If the drive has been formatted to NTFS, data stored in the drive can only be read by Mac systems. To use the drive on MAC OS X operating systems, use Samsung NTFS 3G Driver or reformat your drive
Samsung NTFS 3G driver : (Refer to the 12 page)
Reformat : (Refer to the 18 page)

Appendix



WARNING – PARTITIONING AND FORMATTING YOUR DRIVE WILL PERMANENTLY ERASE ALL THE FILES ON THE DRIVE. DO NOT ATTEMPT TO DO THIS UNLESS ALL OF YOUR FILES HAVE BEEN BACKED UP AND CHECKED FOR RELIABILITY AND READABILITY.

Partitioning and Changing File System Type

It's possible to partition your M2 Portable Series External Hard Drive and change the file system type.

- Reformat to FAT32
- Reformat to NTFS
- Reformat in Macintosh

Reformat to FAT32

- Use Samsung Format Utility to format your M2 Portable Series External Hard Drive to FAT32.
(Samsung Format Utility is a Windows application and is available for download from Samsung's online Customer Support page.)

Reformat to NTFS

Following describes formatting to NTFS in Windows XP:

- Connect M2 Portable Series External Hard Drive to the computer.
- Click "Start" from the lower left corner of your screen.
- Right-click "My Computer" and then select "Manage."
- From the "Computer Management" tool, select "Disk Management."
- Right-click the drive you wish to format and then select "Delete Partition."
- Once drive partition has been deleted, right-click the drive you wish to format and then select "New Partition" as shown in the diagram below.
- From Create Partition Wizard, select "Primary Partition" and then enter the desired size of the partition.
- From the "File System" menu, select "NTFS" and format

Format in Macintosh

Following describes formatting in Mac OS X:

- Launch Mac OS X's "Disk Utility" tool.
- Open the main drive folder from the desktop. Open the "Applications" folder and then the "Utilities" folder.
- Select the "Disk Utility" file.
- Select the drive you wish to reformat.
- Select the "Erase" menu.
- Select "Mac OS Extended (Journaled)" from "Volume Format" menu and then Click "Erase" button
- Once formatting is complete, the drive will appear on your desktop.

Product Certifications

- CE** (European Union/Community)
- VCCI** (Voluntary Control Council for Interference by Information)
- FCC** (Federal Communications Commission)
- C-TICK**
- KCC** (Korea Communications Commission)
- BSMI** (Bureau of Standards, Metrology and Inspection)
- cUL** (C- Underwriter’s Laboratories, Inc)
- TUV** (Technischer Überwachungs Verein)
- CB**



This marking on the product, accessories or literature indicates that the product and its electronic accessories (e.g. charger, headset, USB cable) should not be disposed of with other household waste at the end of their working life. To prevent possible harm to the environment or human health from uncontrolled waste disposal, please separate these items from other types of waste and recycle them responsibly to promote the sustainable reuse of material resources.

Household users should contact either the retailer where they purchased this product, or their local government office, for details of where and how they can take these items for environmentally safe recycling.

Business users should contact their supplier and check the terms and conditions of the purchase contract. This product and its electronic accessories should not be mixed with other commercial wastes for disposal.

FCC

	<p>CAUTION : Changes or modifications not expressly approved by the part responsible for compliance could void the user’s authority to operate the equipment.</p>
<p>Class B</p>	<p>Note : This equipment has been tested and found to comply with the limits for a Class B digital device, pursuant to part 15 of the FCC Rules. These limits are designed to provide reasonable protection against harmful interference in a residential installation. This equipment generates uses and can radiate radio frequency energy and, if not installed and used in accordance with the instructions, may cause harmful interference to radio communications, However, there is no guarantee that interference will not occur in a particular installation. If this equipment does cause harmful interference to radio or television reception, which can be determined by turning the equipment off and on, the user is encouraged to try to correct the interference by one or more of the following measures:</p> <ul style="list-style-type: none"> - Reorient or relocate the receiving antenna. - Increase the separation between the equipment and receiver. - Connect the equipment into an outlet on a circuit different from that to which the receiver is connected. - Consult the dealer or an experienced radio/TV technician for help.

Warranty Information

The following limited warranty applies to the Samsung External Hard Drive but does not supersede regional and national laws and regulations.

Limited Warranty

Samsung makes the following limited warranties during the warranty period: (a) the Products will function properly under normal use; (b) the Products will be free from defects in materials or workmanship; (c) the Products will conform to the published specifications; and (d) the Products will conform to any additional specifications agreed to in writing by the parties.

Samsung warranties do not cover any problem that is caused by (a) commercial use; accident; abuse; neglect; shock; electrostatic discharge; heat or humidity beyond product specifications; improper installation; operation; maintenance or modification; or (b) any misuse contrary to the instructions in the user's manual; or (c) lost passwords; or (d) malfunctions caused by other equipment.

Our limited warranties are void if a product is returned with removed, damaged, or tampered labels or any alterations (including removal of any component or external cover). Our warranties do not cover data loss – back up the contents of your drive to a separate storage medium on a regular basis. Also, consequential damages; incidental damages; and costs related to data recovery, removal and installation are not recoverable under our warranties.

Warranty Period

The warranty period for product is three (3) years from the documented date of purchase from Samsung or a Samsung[®] authorized reseller.

Customer Service

To request warranty service, please contact the place of purchase, or visit our web site (www.samsunghdd.com) for information on obtaining service or an RMA (Return Material Authorization) number. Submit your phone number, e-mail, address, name, product model, and serial number(s) and an RMA number with all pertinent information will be provided to you for returning product to Samsung. When you return the product to Samsung, the product must be properly packaged in original packing with a traceable forwarder and freight prepaid to the return address listed on the RMA. Remember to write the RMA number on the out side of box, or the shipment will be refused and returned to you at freight collect.

Samsung, or an authorized Samsung service center, will replace your product with a functionally equivalent product. Samsung will not return your original drive and data recovery is not included.

It is highly recommended that you backup your data. Once your drive is received at Samsung, the ownership of the product and all content therein will be transferred to Samsung.

Please contact Samsung with any comments or inquiries at www.samsunghdd.com



Samsung Electronics Co., Ltd.

STORAGE SYSTEM DIVISION

HEAD OFFICE: 416, MAETAN-3 DONG, YEONGTONG-GU, SUWON SI, GYEONGGI-DO, KOREA, 443-742

FAX : 82-54-479-5801

Copyright

Samsung Electronics reserves all copyrights to the content of this manual. Copyright laws prohibit reproduction of this manual in part or whole by any third party without the explicit consent of Samsung Electronics.

Samsung Electronics does not assume any patent responsibility for the use of information contained in this manual.

Disclaimer

This user's manual has been subjected to thorough reviews and verifications to ensure accuracy of its content and contains information that's pertinent to the model and series it describes at the time of publication. However, content of this manual and/or product specifications are subject to change without prior notice and with no direct or indirect liability on Samsung Electronics' part concerning such change.

Free Manuals Download Website

<http://myh66.com>

<http://usermanuals.us>

<http://www.somanuals.com>

<http://www.4manuals.cc>

<http://www.manual-lib.com>

<http://www.404manual.com>

<http://www.luxmanual.com>

<http://aubethermostatmanual.com>

Golf course search by state

<http://golfingnear.com>

Email search by domain

<http://emailbydomain.com>

Auto manuals search

<http://auto.somanuals.com>

TV manuals search

<http://tv.somanuals.com>