

# SyncMaster 153S/173S/193S/174V/175V



**SyncMaster**  
Monitor



# Index

 [Main Page](#)

 [On-Screen Display](#)

---

 [Safety Instructions](#)

 [Troubleshooting](#)

 [Notational](#)

 [Check List](#)

 [Power](#)

 [Q & A](#)

 [Installation](#)

 [Self-Test Feature Check](#)

 [Cleaning](#)

 [Other](#)

---

 [Introduction](#)

 [Specifications](#)

 [Unpacking](#)

 [General Specifications](#)

 [Front](#)

 [PowerSaver](#)

 [Rear](#)

 [Preset Display Modes](#)

---

 [Setup](#)

 [Information](#)

 [Connecting Your Monitor](#)

 [Service](#)

 [Installing the Monitor Driver](#)

 [Terms](#)

 [Automatic](#)

 [Regulatory](#)

 [Manual](#)

 [Natural Color](#)

 [Installing VESA compliant mounting](#)

 [For Better Display](#)

 [Authority](#)

# Safety Instructions

## Notational

Please read the following safety instructions as they are designed to prevent damage to property and harm to the user.



## Warning/ Caution



Failure to follow directions noted by this symbol could result in bodily harm or damage to equipment.

## Notation Conventions



Prohibited



Important to read and understand at all times



Do not disassemble



Disconnect the plug from the outlet



Do not touch



Grounding to prevent an electric shock

# Safety Instructions

## Power



When not used for extended periods of time, set your PC to DPMS. If using a screen saver, set it to the active screen mode.



**Do not use a damaged or loose plug.**

- This may cause an electric shock or fire.



**Do not pull the plug out by the wire nor touch the plug with wet hands.**

- This may cause an electric shock or fire.



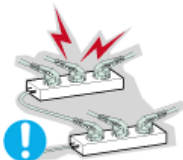
**Use only a properly grounded plug and receptacle.**

- An improper ground may cause electric shock or equipment damage.



**Do not excessively bend the plug and wire nor place heavy objects upon them, which could cause damage.**

- This may cause an electric shock or fire.



**Do not connect too many extension cords or plugs to an outlet.**

- This may cause a fire.

# Safety Instructions

## Installation



● **Put your monitor in a location with low humidity and a minimum of dust.**

- An electric shock or fire could result inside the monitor.



● **Do not drop the monitor when moving it.**

- This may cause damage to the product or human body.



● **Place the monitor on a flat and stable surface.**

- The monitor can cause injury by falling.



● **Set down the monitor carefully.**

- It could be damaged or broken.



● **Do not place the monitor face down.**

- The TFT-LCD surface may be damaged.



● **Installing a wall bracket must be done by a qualified professional.**

- Installation by unqualified personnel may result in injury.
- Always use the mounting device specified in the owner's manual.

## Safety Instructions

### Clean



When cleaning the monitor case or the surface of the TFT-LCD, wipe with a slightly moistened, soft fabric.



● **Do not spray water or detergent directly on the monitor.**

- This may cause damage, electric shock or a fire.



● **Use the recommended detergent with a smooth cloth.**



● **If the connector between the plug and the pin is dusty or dirty, clean it properly with a dry cloth.**

- A dirty connector can cause an electric shock or fire.

# Safety Instructions

## Other



● **Do not remove cover(or back). No user serviceable parts inside.**

- This may cause an electric shock or a fire.
- Refer servicing to qualified service personnel.



● **If your monitor does not operate normally - in particular, if there are any unusual sounds or smells coming from it - unplug it immediately and [contact an authorized dealer or service](#).**

- This may cause an electric shock or fire.



● **Be careful not to let water drip into the monitor or expose the monitor to moisture.**

- This may cause malfunction, an electric shock or a fire.
- Especially avoid operating the monitor near water or outdoors where it could be exposed to snow or rain.



● **If the monitor is dropped or the casing is damaged, turn the monitor off and unplug the power cord.**

- The monitor may malfunction, causing an electric shock or a fire.
- Then contact the [Service Center](#).



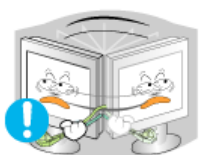
● **Keep the power off when there is thunder and lightning outside, or let the monitor remain unused for an extended period of time.**

- The monitor may malfunction, causing an electric shock or a fire.



● **Do not try to move the monitor by pulling on the wire or the signal cable.**

- This may cause a breakdown, electric shock or a fire due to damage to the cable.



● **Do not move the monitor right or left by pulling only the wire or the signal cable.**

- This may cause a breakdown, electric shock or a fire due to damage to the cable.



● **Do not cover the vents on the monitor cabinet.**

- Bad ventilation may cause a breakdown or fire.



● **Do not place water containers, chemical products or small metal objects on the monitor.**

- This may cause malfunction, an electric shock or a fire.
- If a foreign substance enters the monitor, unplug the power cord and contact the [Service Center](#).



● **Do not use or store inflammable substances near the monitor.**

- This may cause an explosion or fire.



● **Never insert anything metallic into the monitor openings.**

- This may cause an electric shock, fire or injury.



● **Do not insert metal objects such as utensils, wire or drill bits, or things that catch fire easily, such as pieces of paper or matches, into the vents or the headphone or A/V ports on the monitor.**

- This may cause malfunction, an electric shock or a fire.
- Always contact the [Service Center](#) if foreign substances/objects enter into the monitor.



● **If you view a fixed screen for an extended period of time, residual image or blurriness may appear.**

- Change the mode to energy save or set a screensaver to moving picture when you need to be away from the monitor for an extended period of time.



● **Be careful when adjusting the stand angle.**

- Applying too much force may cause the monitor to topple over or fall, resulting in injury.
- Your hand or finger(s) may get caught between the monitor and the stand, causing injury.



● **Adjust the resolution and frequency to the levels appropriate for the model.**

- Inappropriate levels of resolution and frequency may damage your eyesight.

|                      |               |
|----------------------|---------------|
| <b>15 inch</b>       | - 1024 x 768  |
| <b>17,18,19 inch</b> | - 1280 x 1024 |
| <b>17 inch wide</b>  | - 1280 x 768  |
| <b>21 inch</b>       | - 1600 x 1200 |
| <b>24 inch</b>       | - 1920 x 1200 |





● **Keep the volume at a proper level when you use the headphones.**

- Excessively loud volume levels may damage hearing.
- 



● **Keep a proper distance between your eyes and the monitor screen.**

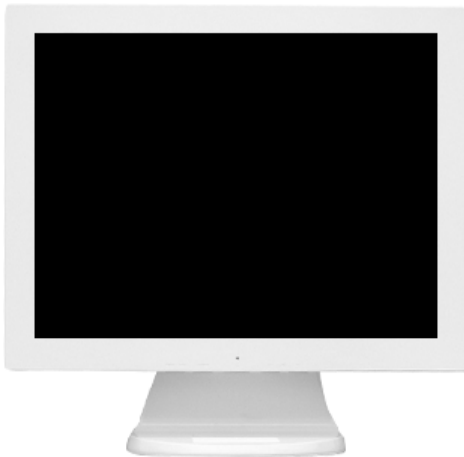
- Sitting too close to the monitor on a continuous basis may damage eyesight.

# Introduction

## Unparking

Please make sure the following items are included with your monitor. If any items are missing, [contact your dealer](#).

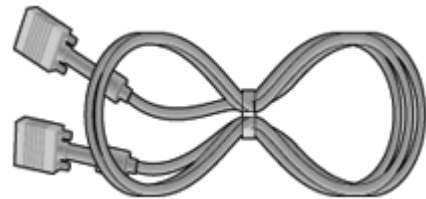
### ● Monitor and Stand



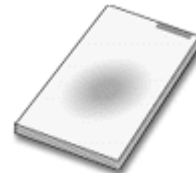
### ● Power Cord



### ● Signal Cable



### ● Quick Setup Guide



### ● Warranty Card (Not available in all locations)

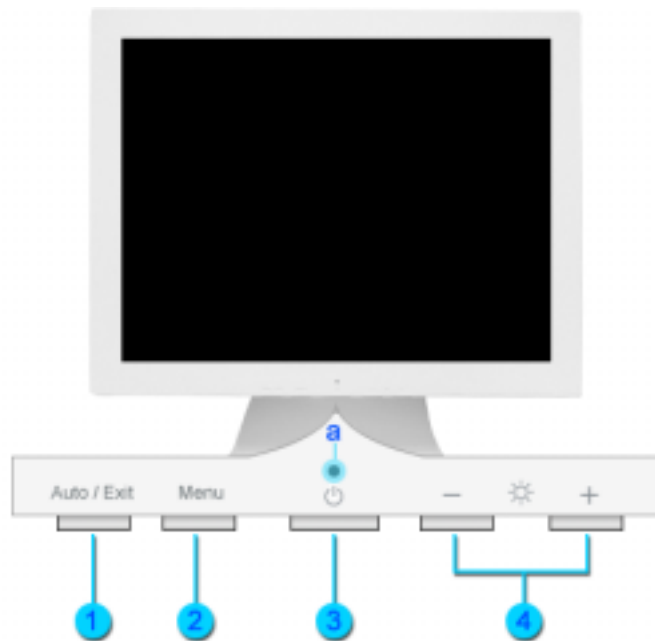


### ● User's Guide and Driver Installation CD



## Introduction

### Front



**1. Auto button /  
Exit button**

Use this button to auto adjustment direct access. /  
Use this button to Exit the active menu or the OSD.

**2. Menu button**

Use this button to open the OSD and activate a highlighted menu item.

**3. Power button**

Use this button to turn the monitor on and off.

**4. Adjust buttons**

These buttons allow you to highlight and adjust items in the menu.

**a. Power indicator**

This light glows green during normal operation, and blinks green once as the monitor saves your adjustments.

**Note:** See [PowerSaver](#) described in the manual for further information regarding power saving functions. For energy conservation, turn your monitor OFF when it is not needed, or when leaving it unattended for long periods.

## Introduction

### Rear



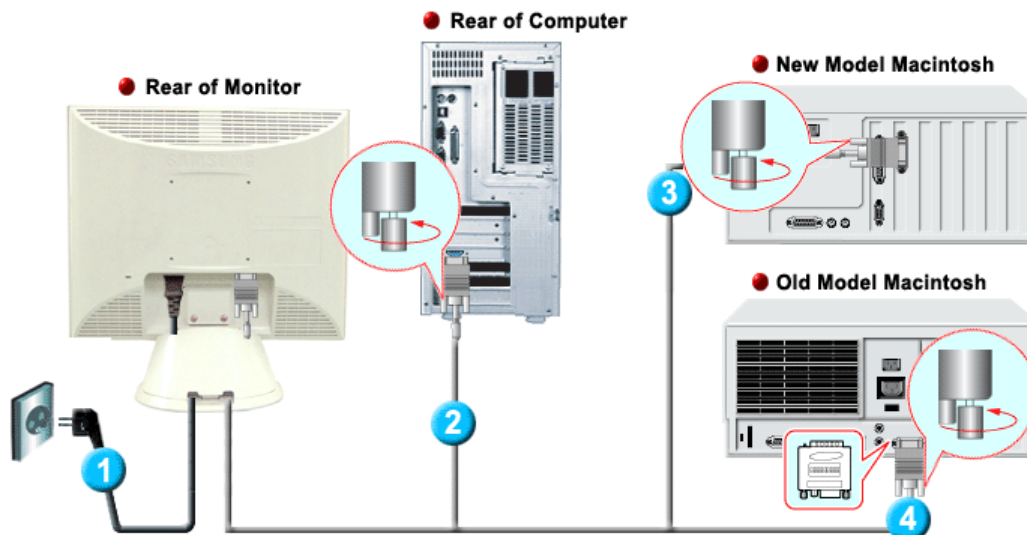
(The configuration at the back of the monitor may vary from product to product.)

- 1. Power port** : Connect the power cord for your monitor to the power port on the back of the monitor.
- 2. Signal cable** : Connect the end of the signal cable to your computer's video port. (video board, video card or graphics card)

**Note** : See Connecting Your Monitor for further information regarding cable connections.

# Setup

## Connecting Your Monitor



### 1. Power supply

- Connect the power cord for your monitor to the power port on the back of the monitor. Plug the power cord for the monitor into a nearby outlet.

### 2. Connecting to a computer

- Connect the signal cable to the 15-pin, D-sub connector on the back of your Computer.

### 3. Connecting to a new Macintosh

- Connect the monitor to the Macintosh computer using the D-SUB connection cable.

### 4. Connecting to an old Macintosh

- Connect your monitor to the Macintosh using the adapter for Macintosh (sold separately).

**5. Turn on your computer and monitor. If your monitor displays an image, installation is complete.**

## Setup

Automatic

Manual



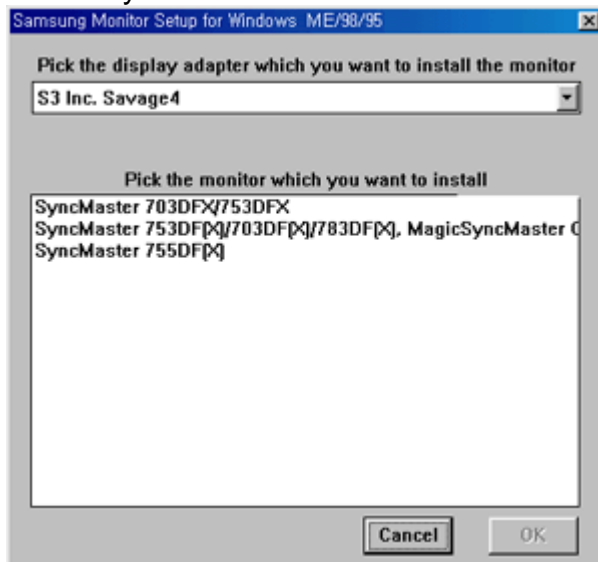
**Note** When prompted by the operating system for the monitor driver, insert the CD-ROM included with this monitor. Driver installation is slightly different from one operating system to another. Follow the directions as appropriate for the operating system you have.

Prepare a blank disk and download the driver program file at the Internet web site shown here.

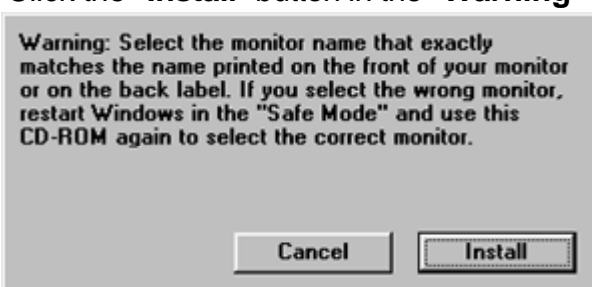
- Internet web site : <http://www.samsung-monitor.com/> (Worldwide)
- <http://www.samsungusa.com/monitor/> (USA)
- <http://www.sec.co.kr/monitor/> (Korea)
- <http://www.samsungmonitor.com.cn/> (China)

### Windows ME

1. Insert CD into the CD-ROM drive.
2. Click "**Windows ME Driver**".
3. Choose your monitor model in the model list, then click the "**OK**" button.



4. Click the "**Install**" button in the "**Warning**" window.

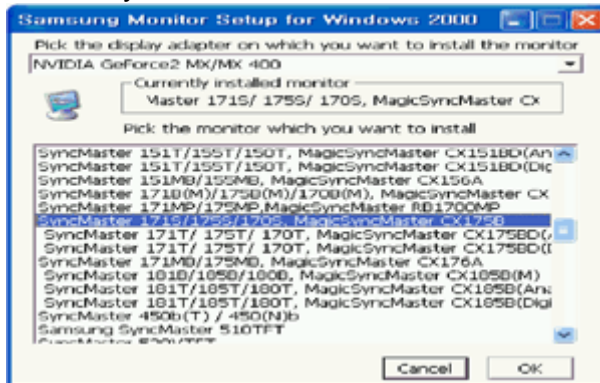


5. Monitor driver installation is completed.

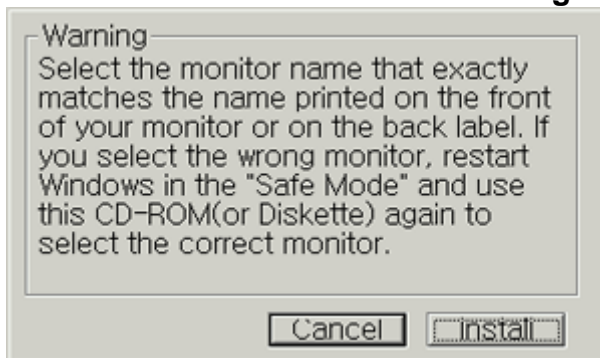
# Setup

## Windows XP/2000

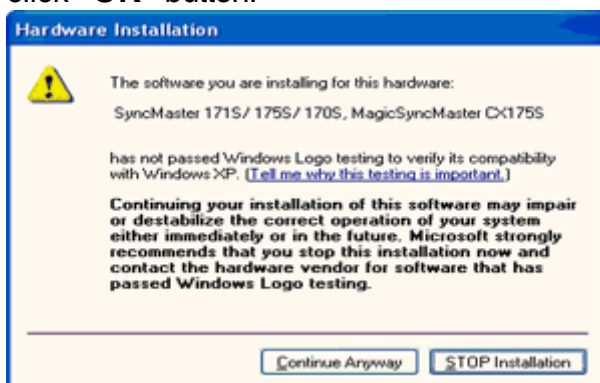
1. Insert CD into the CD-ROM drive.
2. Click "**Windows XP/2000 Driver**".
3. Choose your monitor model in the model list, then click the "**OK**" button.



4. Click the "**Install**" button in the "**Warning**" window.



5. If you can see following "**Message**" window, then click the "**Continue Anyway**" button. Then click "**OK**" button.



This monitor driver is under certifying MS logo, and this installation don't damage your system. The certified driver will be posted on Samsung Monitor Homepage <http://www.samsung-monitor.com/>

6. Monitor driver installation is completed.

# Setup

Automatic

Manual



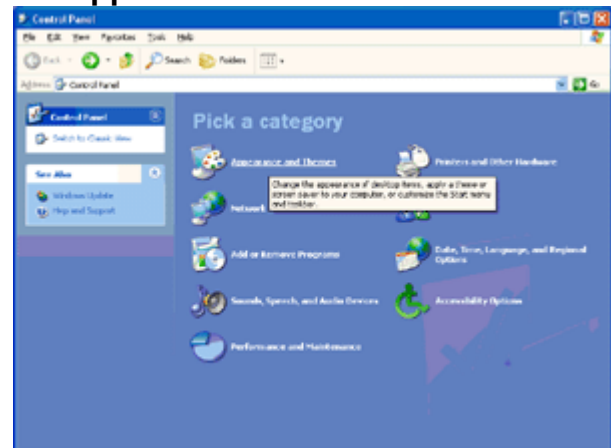
**Note** When prompted by the operating system for the monitor driver, insert the CD-ROM included with this monitor. Driver installation is slightly different from one operating system to another. Follow the directions as appropriate for the operating system you have.

Prepare a blank disk and download the driver program file at the Internet web site shown here.

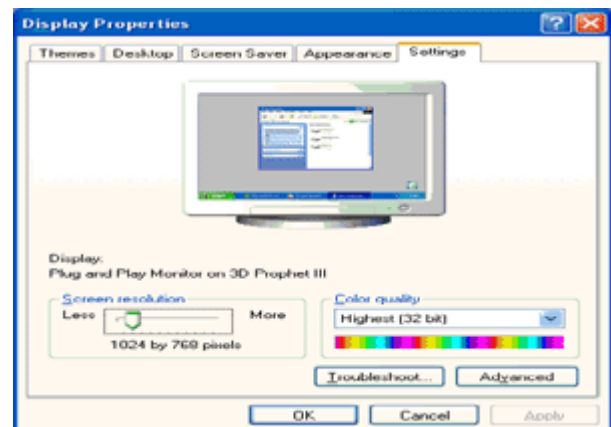
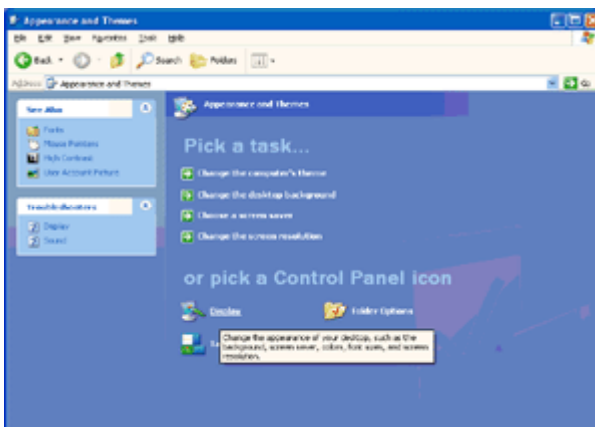
- Internet web site : <http://www.samsung-monitor.com/> (Worldwide)
- <http://www.samsungusa.com/monitor/> (USA)
- <http://www.sec.co.kr/monitor/> (Korea)
- <http://www.samsungmonitor.com.cn/> (China)

## Microsoft® Windows® XP Operating System

1. Insert CD into the CD-ROM driver.
2. Click "**Start**" → "**Control Panel**" then click the "**Appearance and Themes**" icon.



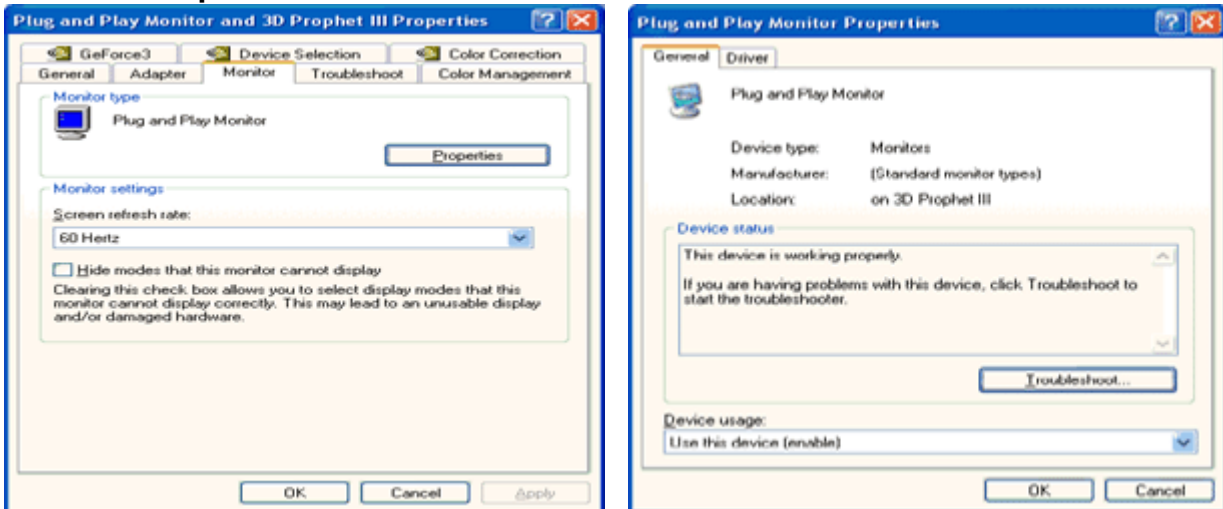
3. Click "**Display**" icon and choose the "**Settings**" tab then click "**Advanced..**".



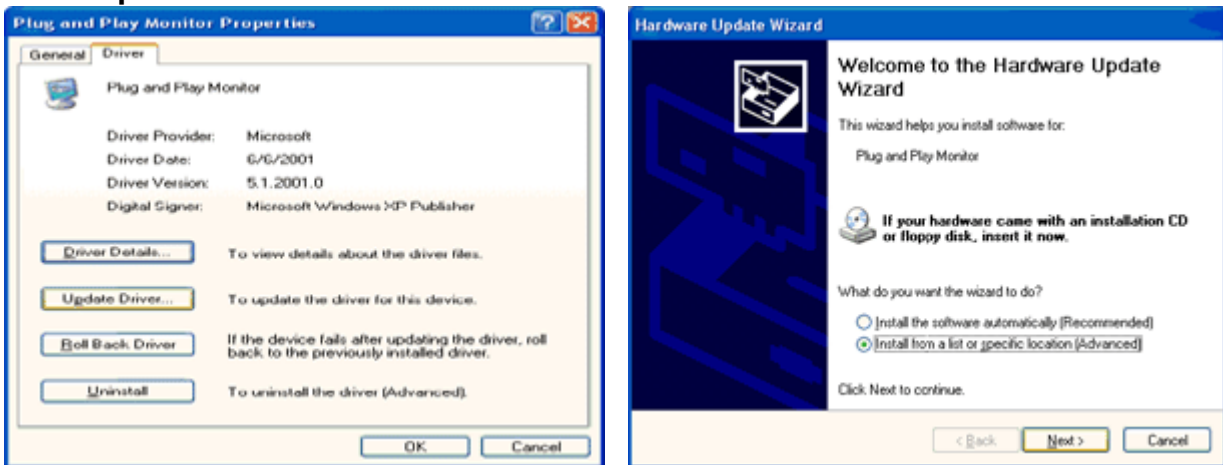


# Setup

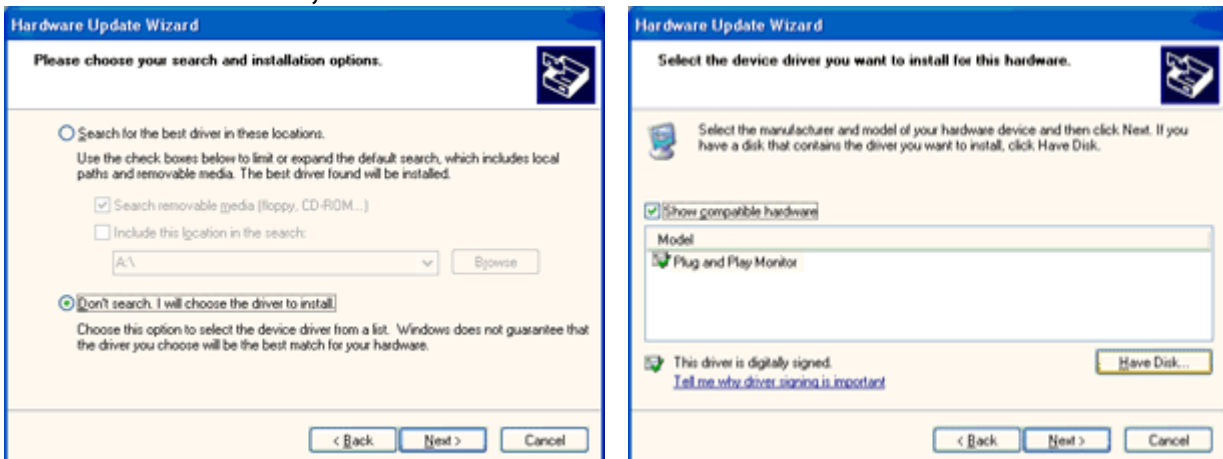
4. Click the **"Properties"** button on the **"Monitor"** tab and select **"Driver"** tab.



5. Click **"Update Driver.."** and select **"Install from a list or.."** then click **"Next"** button.

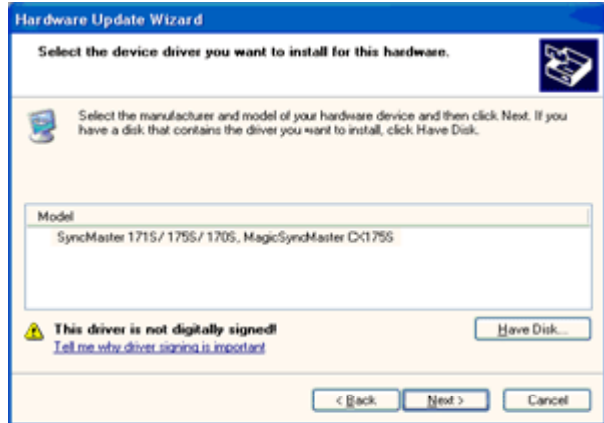
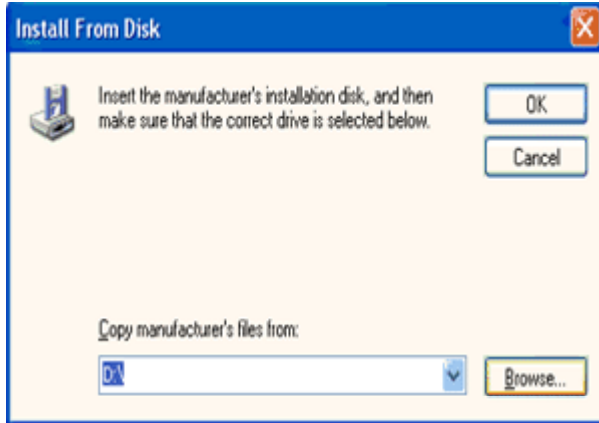


6. Select **"Don't search, I will.."** then click **"Next"** and then click **"Have disk"**.

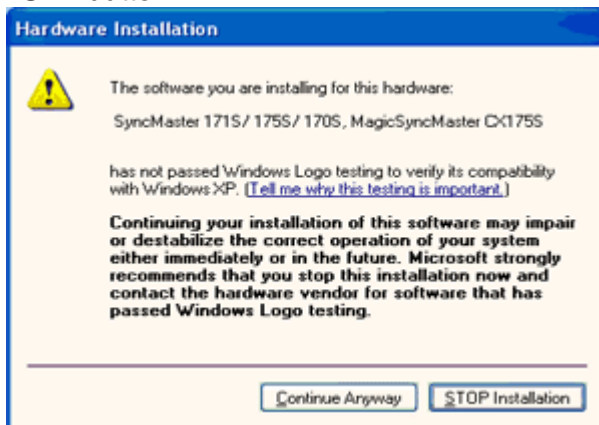


7. Click the **"Browse"** button then choose A:(D:\Driver) and choose your monitor model in the model list and click the **"Next"** button.

# Setup

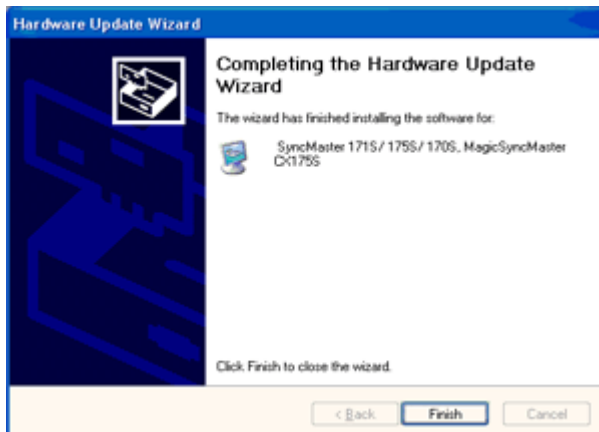


8. If you can see following "Message" window, then click the "Continue Anyway" button. Then click "OK" button.

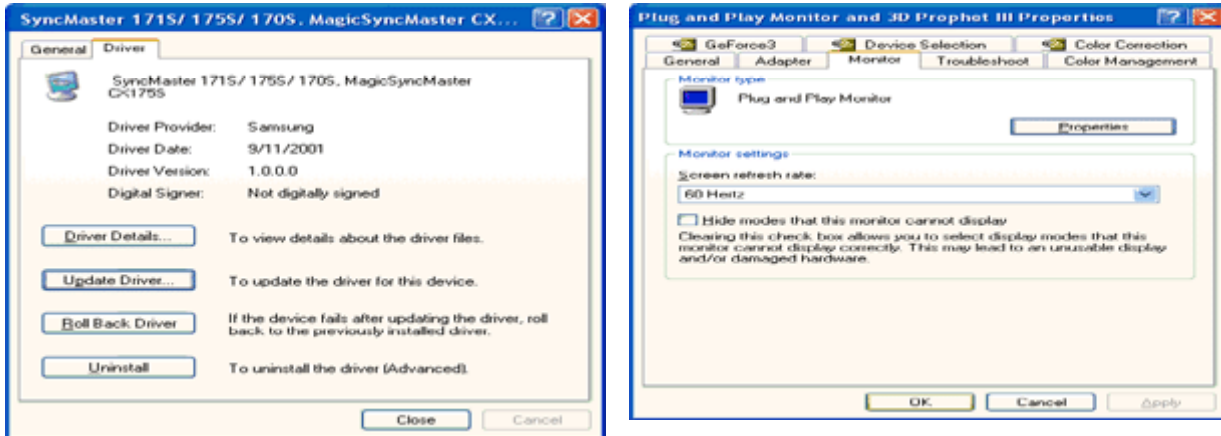


This monitor driver is under certifying MS logo, and this installation don't damage your system. The certified driver will be posted on Samsung Monitor Homepage <http://www.samsung-monitor.com/>

9. Click the "Close" button then click "OK" button continually.



## Setup



10. Monitor driver installation is completed.

### Microsoft® Windows® 2000 Operating System

When you can see "Digital Signature Not Found" on your monitor, follow these steps.

1. Choose "OK" button on the "Insert disk" window.
2. Click the "Browse" button on the "File Needed" window.
3. Choose A:(D:\Driver) then click the "Open" button and then click "OK" button.

### How to install

1. Click "Start" , "Setting" , "Control Panel".
2. Double click the "Display" icon.
3. Choose the "Settings" tab and then click "Advanced..".
4. Choose "Monitor".
  - Case1: If the "Properties" button is inactive, it means your monitor is properly configured. Please stop installation
  - Case2: If the "Properties" button is active, click the "Properties" button then follow next steps continually.
5. Click "Driver" and then click on "Update Driver.." then click on the "Next" button.
6. Choose "Display a list of the known drivers for this device so that I can choose a specific driver" then click "Next" and then click "Have disk".
7. Click the "Browse" button then choose A:(D:\Driver).
8. Click the "Open" button, then click "OK" button.
9. Choose your monitor model and click the "Next" button then click "Next" button.
10. Click the "Finish" button then the "Close" button.

If you can see the "Digital Signature Not Found" window then click the "Yes" button. And click the "Finish" button then the "Close" button.

## Setup

### ● Microsoft® Windows® Millennium Operating System

1. Click "**Start**", "**Setting**", "**Control Panel**".
2. Double click "**Display**" icon.
3. Select the "**Settings**" tab and click "**Advanced Properties**" button.
4. Select the "**Monitor**" tab.
5. Click the "**Change**" button in the "**Monitor Type**" area.
6. Choose "**Specify the location of the driver**".
7. Choose "**Display a list of all the driver in a specific location..**" then click "**Next**" button.
8. Click the "**Have Disk**" button
9. Specify A:\(D:\driver) then click "**OK**" button.
10. Select "**Show all devices**" and choose the monitor that corresponds to the one you connected to your computer and click "**OK**".
11. Continue choosing "**Close**" button and "**OK**" button until you close the Display Properties dialogue box.  
(You can get some other screen for warning message or others, then click the appreciate option for your monitor.)

### ● Microsoft® Windows® NT Operating System

1. Click **Start, Settings, Control Panel**, and then double-click **Display** icon.
2. In Display Registration Information window, click Settings Tab and then click **All Display Modes**.
3. Select a mode that you wish to use (Resolution, Number of colors and Vertical frequency) and then click **OK**.
4. Click **Apply** button if you see the screen working normally after clicking Test. If the screen is not normal, change to a different mode (lower mode of resolution, colors or frequency).

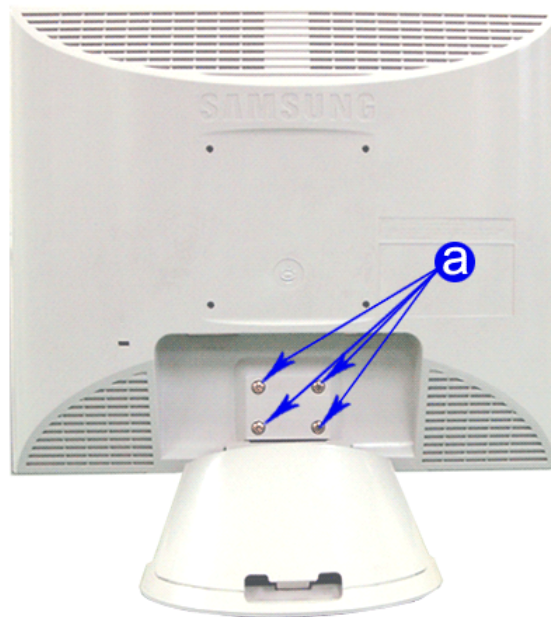
### ● Linux Operating System

To execute X-Window, you need to make the X86Config file, which is a type of system setting file.

1. Press Enter at the first and the second screen after executing the X86Config file.
2. The third screen is for **setting your mouse**.
3. Set a mouse for your computer.
4. The next screen is for **selecting a keyboard**.
5. Set a Keyboard for your computer.
6. The next screen is for **setting your monitor**.
7. First of all, set a **horizontal frequency** for your monitor. (You can enter the frequency directly.)
8. Set a **vertical frequency** for your monitor. (You can enter the frequency directly.)
9. Enter the **model name of your monitor**. This information will not affect the actual execution of X-Window.
10. You have **finished** setting up your monitor.  
**Execute X-Window** after setting other requested hardware.

## Setup

### Installing VESA compliant mounting



### Removing the base

- 1 Turn off your monitor and unplug its power cord.
- 2 Lay the LCD monitor face-down on a flat surface with a cushion beneath it to protect the screen.
- 3 Remove the four screws and then remove the Stand from the LCD monitor.

## Setup

### Installing VESA compliant mounting

#### Attaching a base

NOTE : This monitor accepts a 75mm x 75mm VESA-compliant mounting interface pad.



- 1 Rear cover mounting pad
- 2 Mounting interface pad

Align the Mounting Interface Pad with the holes in the Rear Cover Mounting Pad and secure it with the four screws that came with the arm-type base, wall mount hanger or other base.

## On-Screen Display



1. Use this button to open the OSD and activate a highlighted menu item.
2. Use these buttons to highlight and adjust items using the On Screen Display.
3. Use this button to Exit the active menu or the OSD



# Troubleshooting

## Check List



Before calling for service, check the information in this section to see if you can remedy any problems yourself. If you do need assistance, please call the phone number on the warranty card, [the phone number on the Information section](#) or [contact your dealer](#).

| Symptom   | Check List   | Solutions   |
|---|--|---|
| <b>No images on the screen. I cannot turn on the monitor.</b> | Is the power cord connected properly?  | Check the power cord connection and supply.   |
|   | <b>Can you see "No Connection, Check Signal Cable" on the screen?</b>                                    | Check the signal cable connection.  |
|   | If the power is on, reboot the computer to see the initial screen (the login screen), which can be seen. | If the initial screen (the login screen) appears, boot the computer in the applicable mode (the safe mode for <b>Windows ME/XP/2000</b> ) and <b>then change the frequency of the video card</b> .<br><br>Note: If the initial screen (the login screen) does not appear, <a href="#">contact a service center or your dealer</a> . |
|   | <b>Can you see "Video mode not supported" on the screen?</b>   | You can see this message when the signal from the video card exceeds the maximum resolution and frequency that the monitor can properly handle.<br><br>Adjust the maximum resolution and frequency that the monitor can properly handle.  |
|   | There is no image on the screen. Is the power indicator on the monitor blinking at 1 second intervals?   | The monitor is in PowerSaver mode.<br><br><b>Press a key on the keyboard or move the mouse to activate the monitor and restore the image on the screen.</b>   |
| <b>I cannot see the On Screen Display.</b>                    | <b>Have you locked the On Screen Display (OSD) Menu to prevent changes?</b>                              | <b>Unlock the OSD by pressing the MENU button for at least 5 seconds.</b>   |



# Troubleshooting

## Check List

|   |  |   |
|---|--|---|
| <p><b>The screen shows strange colors or just black and white.</b></p>  | <p>Is the screen displaying only one color as if looking at the screen through a cellophane paper?</p>       | <p>Check the signal cable connection.</p> <p>Make sure the video card is fully inserted in its slot.</p>  |
|   | <p>Have the screen colors become strange after running a program or due to a crash between applications?</p> | <p>Reboot the computer.</p>   |
|   | <p>Has the video card been set properly?</p>   | <p>Set the video card by referring to the video card manual.</p>  |
| <p><b>The screen is out of focus or OSD cannot be adjusted.</b></p>   | <p>Have you adjusted the resolution or frequency on the monitor?</p>   | <p>Adjust the resolution and frequency of the video card.</p>   |
| <p><b>LED is blinking but no images on the screen.</b></p>  | <p>Is the frequency properly adjusted when checking the Display Timing on the menu?</p>                      | <p>Adjust the frequency properly by referring to the video card manual.</p> <p>(The maximum frequency per resolution may differ from product to product.)</p> |
| <p><b>There are only 16 colors shown on the screen. The screen colors have changed after changing the video card.</b></p> | <p>Have the Windows colors been set properly?</p>  | <p>For Windows ME/XP/2000:<br/>Set the colors properly at the <b>Control Panel, Display, Settings</b>.</p>  |
|   | <p>Has the video card been set properly?</p>   | <p>Set the video card by referring to the video card manual.</p>  |
| <p><b>There is a message that reads "Unrecognized monitor, Plug &amp; Play (VESA DDC) monitor found".</b></p>             | <p>Have you installed the monitor driver?</p>  | <p>Install the monitor driver according to the <a href="#">Driver Installation Instructions</a>.</p>  |
|   | <p>See the video card manual to see if the Plug &amp; Play (VESA DDC) function can be supported.</p>         | <p>Install the monitor driver according to the <a href="#">Driver Installation Instructions</a>.</p>  |

## Troubleshooting

### Check List

**Check the following items if there is trouble with the monitor.**

1. Check if the power cord and the cable are properly connected to the computer.
2. Check if the computer beeps more than 3 times when booting.  
(If it does, request an after-service for the main board of the computer.)
3. If you installed a new video card or if you assembled the PC, check if the installed the adapter (video) driver and the monitor driver.
4. Check if the scanning ratio of the video screen is set at 75Hz or 85Hz.  
(Do not exceed 60Hz when using the maximum resolution.)
5. If you have problems in installing the adapter (video) driver, boot the computer in Safe Mode, remove the Display Adapter at the "**Control Panel, System, Device Administrator**" and then reboot the computer to reinstall the adapter (video) driver.

**Note:** If problems repeatedly occur, [contact an authorized service center](#).

## Troubleshooting

### Q&A

| Question                                  | Answer  |
|---|---|
| How can I change the frequency?           | <p>Frequency can be changed by reconfiguring the video card.</p> <p>Note that video card support can vary, depending on the version of the driver used.<br/>(Refer to the computer or the video card manual for details.)</p>                           |
| How can I adjust the resolution?          | <p>Windows ME/XP/2000: Set the resolution at the <b>Control Panel, Display, Settings</b>.</p> <p>* Contact the video card manufacturer for details.</p>   |
| How can I set the Power Saving function?  | <p>Windows ME/XP/2000: Set the function at BIOS-SETUP of the computer or the screen saver. (Refer to Windows/Computer Manual).</p>  |
| How can I clean the outer case/LCD Panel? | <p>Disconnect the power cord and then clean the monitor with a soft cloth, using either a cleaning solution or plain water.</p> <p>Do not leave any remains of the detergent nor scratch the case. Do not allow any water to go inside the monitor.</p> |

## Troubleshooting

### Self-Test Feature Check

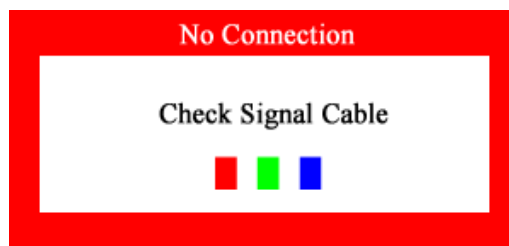
Your monitor provides a self test feature that allows you to check whether your monitor is functioning properly.

### Self-Test Feature Check

1. Turn off both your computer and the monitor.
2. Unplug the video cable from the back of the computer.
3. Turn on the monitor.

If the monitor is functioning properly, you will see a box with a border and text inside as shown in the following illustration:

The three boxes inside the border are red, green and blue.



Failure of any of the boxes to appear indicates a problem with your monitor. This box also appears during normal operation if the video cable becomes disconnected or damaged.

4. Turn off your monitor and reconnect the video cable; then turn on both your computer and the monitor.

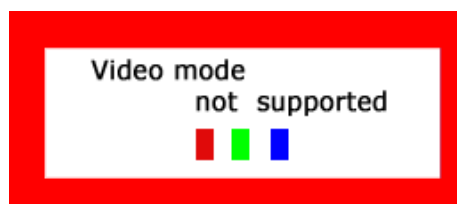
If your monitor screen remains blank after using the previous procedure, check your video controller and computer system; your monitor is functioning properly.

## Troubleshooting

### Self-Test Feature Check

### Warning Messages

If there is something wrong with the input signal, a message appears on the screen or the screen goes blank although the power indicator LED is still on. The message may indicate that the monitor is out of scan range or that you need to check the signal cable.



### Environment

The location and the position of the monitor may influence the quality and other features of the monitor.

1. If there are any woofer speakers near the monitor, unplug and relocate the woofer to another room.
2. Remove all electronic devices such as radios, fans, clocks and telephones that are within 3 feet (one meter) of the monitor.

### Useful Tips

- A monitor recreates visual signals received from the PC. Therefore, if there is trouble with the PC or the video card, this can cause the monitor to become blank, have poor coloring, noise, Video mode not supported, etc. In this case, first check the source of the problem, and then contact a service center or your dealer.
- **Judging the monitor's working condition**  
If there is no image on the screen or an "Video mode not supported" message comes up, disconnect the cable from the computer while the monitor is still powered on.
  - If there is a message coming up on the screen or if the screen goes white, this means the monitor is in working condition.
  - In this case, check the computer for trouble.

# Specifications

## General (SyncMaster 153S)

| General   |                        |
|---|------------------------|
| Model Name  | SyncMaster 153S        |
| LCD Panel   |                        |
| Size  | 15.0 inch diagonal     |
| Display area  | 304.1 (H) x 228.1 (V)  |
| Pixel Pitch   | 0.297 (H) x 0.297 (V)  |
| Type  | a-si TFT active matrix |
| Synchronization   |                        |
| Horizontal  | 31 ~ 61 kHz            |
| Vertical  | 56 ~ 75 Hz             |
| Display Color   |                        |
| 16,294,277 Colors   |                        |
| Resolution  |                        |
| Optimum resolution  | 1024 x 768@60Hz        |
| Maximum resolution  | 1024 x 768@75Hz        |
| Input Signal, Terminated  |                        |
| RGB Analog 0.7 Vpp positive at 75 ohms<br>Separate H/V sync, TTL level positive or negative |                        |
| Maximum Pixel Clock   |                        |
| 80 MHz  |                        |
| Power Supply  |                        |
| AC 90 ~ 264 VAC, 60/50 Hz ± 3Hz   |                        |
| Signal Cable  |                        |
| 15pin-to-15pin D-sub cable, detachable  |                        |
| Power Consumption   |                        |
| 32W (Maximum)   |                        |
| Dimensions (WxDxH)  |                        |
| 353.5 x 57.0 x 280.5 mm (Without Stand)<br>353.5 x 150 x 345.0 mm (After folding the Stand) |                        |
| Weight  |                        |
| 3.4kg (With Simple Stand)   |                        |
| VESA Mounting Interface   |                        |
| 75mm x 75mm (for use with Specialty(Arm) Mounting hardware.)                                |                        |

# Specifications

## General (SyncMaster 153S)

### Environmental considerations

|           |  |
|-----------|--|
| Operating | Temperature: 50°F ~ 104°F (10°C ~ 40°C)<br>Humidity: 10% ~ 80%, non-condensing |
| Storage   | Temperature: -4°F ~ 113°F (-20°C ~ 45°C)<br>Humidity: 5% ~ 95%, non-condensing |

### Plug and Play Capability

This monitor can be installed on any Plug & Play compatible system. Interaction of the monitor and computer systems will provide the best operating conditions and monitor settings. In most cases, monitor installation will proceed automatically, unless the user wishes to select alternate settings.

### Dot Acceptable

TFT LCD panel manufactured by using advanced semiconductor technology with precision of 99.999% above is used for this product. But the pixels of RED, GREEN, BLUE and WHITE color seem to be bright sometimes or some of black pixels could be seen. This is not from bad quality and you can use it without uneasiness.

- For example, the number of TFT LCD pixels that is contained in this product are 2,359,296.

**Note: Design and specifications are subject to change without prior notice.**

# Specifications

## PowerSaver (SyncMaster 153S)

This monitor has a built-in power management system called PowerSaver. This system saves energy by switching your monitor into a low-power mode when it has not been used for a certain amount of time. The monitor automatically returns to normal operation when you move the computer's mouse or press a key on the keyboard. For energy conservation, turn your monitor OFF when it is not needed, or when leaving it unattended for long periods. The PowerSaver system operates with a VESA DPMS compliant video card installed in your computer. Use a software utility installed on your computer to set up this feature.

| State             | Normal Operation | Power saving mode<br>EPA/ENERGY 2000 | Power Switch off<br>(110Vac) |
|-------------------|------------------|--------------------------------------|------------------------------|
| Power Indicator   | Green            | Green, Blinking                      | Black                        |
| Power Consumption | Less than 32W    | Less than 2W                         | Less than 1W                 |



This monitor is EPA ENERGY STAR® compliant and ENERGY2000 compliant when used with a computer equipped with VESA DPMS functionality.

As an ENERGY STAR® Partner, SAMSUNG has determined that this product meets the ENERGY STAR® guidelines for energy efficiency.



# Specifications

## Preset Timing Modes (SyncMaster 153S)

If the signal transferred from the computer is the same as the following Preset Timing Modes, the screen will be adjusted automatically. However, if the signal differs, the screen may go blank while the power LED is on. Refer to the video card manual and adjust the screen as follows.

**Table 1. Preset Timing Modes**

| Display Mode     | Horizontal Frequency (kHz) | Vertical Frequency (Hz) | Pixel Clock (MHz) | Sync Polarity (H/V) |
|------------------|----------------------------|-------------------------|-------------------|---------------------|
| IBM, 640 x 350   | 31.469                     | 70.086                  | 25.175            | -/-                 |
| IBM, 640 x 480   | 31.469                     | 59.940                  | 25.175            | -/-                 |
| IBM, 720 x 400   | 31.469                     | 70.087                  | 28.322            | -/+                 |
| VESA, 640 x 480  | 37.500                     | 75.000                  | 31.500            | -/-                 |
| VESA, 640 x 480  | 37.861                     | 72.809                  | 31.500            | -/-                 |
| VESA, 800 x 600  | 35.156                     | 56.250                  | 36.000            | +,-/+,-             |
| VESA, 800 x 600  | 37.879                     | 60.317                  | 40.000            | +/+                 |
| VESA, 800 x 600  | 46.875                     | 75.000                  | 49.500            | +/+                 |
| VESA, 800 x 600  | 48.077                     | 72.188                  | 50.000            | +/+                 |
| VESA, 1024 x 768 | 48.363                     | 60.004                  | 65.000            | -/-                 |
| VESA, 1024 x 768 | 56.476                     | 56.476                  | 75.000            | -/-                 |
| VESA, 1024 x 768 | 60.023                     | 75.029                  | 78.750            | +/+                 |



### Horizontal Frequency

The time to scan one line connecting the right edge to the left edge of the screen horizontally is called Horizontal Cycle and the inverse number of the Horizontal Cycle is called Horizontal Frequency. Unit: kHz

### Vertical Frequency

Like a fluorescent lamp, the screen has to repeat the same image many times per second to display an image to the user. The frequency of this repetition is called Vertical Frequency or Refresh Rate. Unit: Hz

# Specifications

## General (SyncMaster 173S/174V/175V)

| General   |                           |
|---|---------------------------|
| Model Name  | SyncMaster 173S/174V/175V |
| LCD Panel   |                           |
| Size  | 17.0 inch diagonal        |
| Display area  | 337.92 (H) x 270.336 (V)  |
| Pixel Pitch   | 0.264 (H) x 0.264 (V)     |
| Type  | a-si TFT active matrix    |
| Synchronization   |                           |
| Horizontal  | 31 ~ 81 kHz               |
| Vertical  | 56 ~ 75 Hz                |
| Display Color   |                           |
| 16,777,216 colors   |                           |
| Resolution  |                           |
| Optimum resolution  | 1280 x 1024@60Hz          |
| Maximum resolution  | 1280 x 1024@75Hz          |
| Input Signal, Terminated  |                           |
| RGB Analog 0.7 Vpp positive at 75 ohms<br>Separate H/V sync, Composite,<br>TTL level positive or negative |                           |
| Maximum Pixel Clock   |                           |
| 135 MHz   |                           |
| Power Supply  |                           |
| AC 90 ~ 264 VAC rms, 60/50 Hz ± 3Hz   |                           |
| Signal Cable  |                           |
| 15pin-to-15pin D-sub cable, detachable  |                           |
| Power Consumption   |                           |
| 45W (Maximum)   |                           |
| Dimensions (WxDxH)  |                           |
| 382.0 x 61.0 x 319.0 mm (Without Stand)<br>382.0 x 176.2 x 388.0 mm (After folding the Stand)             |                           |
| Weight  |                           |
| 4.8kg (With Simple Stand)   |                           |
| VESA Mounting Interface   |                           |
| 100mm x 100mm (for use with Specialty(Arm) Mounting hardware.)  |                           |

# Specifications

## General (SyncMaster 173S/174V/175V)

### Environmental considerations

|           |   |
|-----------|---|
| Operating | Temperature: 50°F ~ 104°F(10°C ~ 40°C)<br>Humidity: 10% ~ 80%, non-condensing |
| Storage   | Temperature: -4°F ~113°F (-20°C ~ 45°C)<br>Humidity: 5% ~ 95%, non-condensing |

### Dot Acceptable

TFT LCD panel manufactured by using advanced semiconductor technology with precision of 99.999% above is used for this product. But the pixels of RED, GREEN, BLUE and WHITE color seem to be bright sometimes or some of black pixels could be seen. This is not from bad quality and you can use it without uneasiness.

- For example, the no. of TFT LCD pixels that is contained in this product are 3,932,160.

### Plug and Play Capability

This monitor can be installed on any Plug & Play compatible system. Interaction of the monitor and computer systems will provide the best operating conditions and monitor settings. In most cases, monitor installation will proceed automatically, unless the user wishes to select alternate settings.

# Specifications

## General (SyncMaster 193S)

| General   |                          |
|---|--------------------------|
| Model Name  | SyncMaster 193S          |
| LCD Panel   |                          |
| Size  | 19.0 inch diagonal       |
| Display area  | 376.32 (H) x 301.056 (V) |
| Pixel Pitch   | 0.294 (H) x 0.294 (V)    |
| Type  | a-si TFT active matrix   |
| Synchronization   |                          |
| Horizontal  | 31 ~ 81 kHz              |
| Vertical  | 56 ~ 75 Hz               |
| Display Color   |                          |
| 16,294,277 colors   |                          |
| Resolution  |                          |
| Optimum resolution  | 1280 x 1024@60Hz         |
| Maximum resolution  | 1280 x 1024@75Hz         |
| Input Signal, Terminated  |                          |
| RGB Analog 0.7 Vpp positive at 75 ohms<br>Separate H/V sync, Composite,<br>TTL level positive or negative |                          |
| Maximum Pixel Clock   |                          |
| 135 MHz   |                          |
| Power Supply  |                          |
| AC 90 ~ 264 VAC rms, 60/50 Hz ± 3Hz   |                          |
| Signal Cable  |                          |
| 15pin-to-15pin D-sub cable, detachable  |                          |
| Power Consumption   |                          |
| Less than 45W   |                          |
| Dimensions (WxDxH)  |                          |
| 428.0 x 59.5 x 356.0 mm (Without Stand)<br>428.0 x 204.0 x 433.0 mm (After folding the Stand)             |                          |
| Weight  |                          |
| 6.7kg (With Simple Stand)   |                          |
| VESA Mounting Interface   |                          |
| 100mm x 100mm (for use with Specialty(Arm) Mounting hardware.)  |                          |

# Specifications

## General (SyncMaster 193S)

### Environmental considerations

|           |   |
|-----------|---|
| Operating | Temperature: 50°F ~ 104°F(10°C ~ 40°C)<br>Humidity: 10% ~ 80%, non-condensing |
| Storage   | Temperature: -4°F ~113°F (-20°C ~ 45°C)<br>Humidity: 5% ~ 95%, non-condensing |

### Dot Acceptable

TFT LCD panel manufactured by using advanced semiconductor technology with precision of 99.999% above is used for this product. But the pixels of RED, GREEN, BLUE and WHITE color seem to be bright sometimes or some of black pixels could be seen. This is not from bad quality and you can use it without uneasiness.

- For example, the no. of TFT LCD pixels that is contained in this product are 3,932,160.

### Plug and Play Capability

This monitor can be installed on any Plug & Play compatible system. Interaction of the monitor and computer systems will provide the best operating conditions and monitor settings. In most cases, monitor installation will proceed automatically, unless the user wishes to select alternate settings.

# Specifications

## PowerSaver (SyncMaster 173S/174V/175V/193S)

This monitor has a built-in power management system called PowerSaver. This system saves energy by switching your monitor into a low-power mode when it has not been used for a certain amount of time. The monitor automatically returns to normal operation when you move the computer's mouse or press a key on the keyboard. For energy conservation, turn your monitor OFF when it is not needed, or when leaving it unattended for long periods. The PowerSaver system operates with a VESA DPMS compliant video card installed in your computer. Use a software utility installed on your computer to set up this feature.

| State             | Normal Operation | Power saving mode<br>EPA/ENERGY 2000 | Power Switch off<br>(110Vac) |
|-------------------|------------------|--------------------------------------|------------------------------|
| Power Indicator   | Green            | Green, Blinking                      | Black                        |
| Power Consumption | Less than 45W    | Less than 2W                         | Less than 1W                 |



This monitor is EPA ENERGY STAR® compliant and ENERGY2000 compliant when used with a computer equipped with VESA DPMS functionality.

As an ENERGY STAR® Partner, SAMSUNG has determined that this product meets the ENERGY STAR® guidelines for energy efficiency.

# Specifications

## Preset Timing Modes (SyncMaster 173S/174V/175V/193S)

If the signal transferred from the computer is the same as the following Preset Timing Modes, the screen will be adjusted automatically. However, if the signal differs, the screen may go blank while the power LED is on. Refer to the video card manual and adjust the screen as follows.

**Table 1. Preset Timing Modes**

| Display Mode      | Horizontal Frequency (kHz) | Vertical Frequency (Hz) | Pixel Clock (MHz) | Sync Polarity (H/V) |
|-------------------|----------------------------|-------------------------|-------------------|---------------------|
| IBM, 640 x 350    | 31.469                     | 70.086                  | 25.175            | +/-                 |
| IBM, 640 x 480    | 31.469                     | 59.940                  | 25.175            | -/-                 |
| IBM, 720 x 400    | 31.469                     | 70.087                  | 28.322            | -/+                 |
| VESA, 640 x 480   | 37.500                     | 75.000                  | 31.500            | -/-                 |
| VESA, 640 x 480   | 37.861                     | 72.809                  | 31.500            | -/-                 |
| MAC., 640 x 480   | 35.000                     | 66.667                  | 30.240            | -/-                 |
| MAC., 832 x 624   | 49.726                     | 74.551                  | 57.284            | -/-                 |
| VESA, 800 x 600   | 35.156                     | 56.250                  | 36.000            | +,-/+,-             |
| VESA, 800 x 600   | 37.879                     | 60.317                  | 40.000            | +/+                 |
| VESA, 800 x 600   | 46.875                     | 75.000                  | 49.500            | +/+                 |
| VESA, 800 x 600   | 48.077                     | 72.188                  | 50.000            | +/+                 |
| VESA, 1024 x 768  | 48.363                     | 60.004                  | 65.000            | -/-                 |
| VESA, 1024 x 768  | 56.476                     | 70.069                  | 75.000            | -/-                 |
| VESA, 1024 x 768  | 60.023                     | 75.029                  | 78.750            | +/+                 |
| VESA, 1280 x 1024 | 63.981                     | 60.020                  | 108.00            | +/+                 |
| VESA, 1280 x 1024 | 79.976                     | 75.025                  | 135.00            | +/+                 |



### Horizontal Frequency

The time to scan one line connecting the right edge to the left edge of the screen horizontally is called Horizontal Cycle and the inverse number of the Horizontal Cycle is called Horizontal Frequency. Unit: kHz

### Vertical Frequency

Like a fluorescent lamp, the screen has to repeat the same image many times per second to display an image to the user. The frequency of this repetition is called Vertical Frequency or Refresh Rate. Unit: Hz

## Information

- **AUSTRALIA :**  
Samsung Electronics Australia Pty Ltd.  
Customer Response Centre  
7 Parkview Drive, Homebush Bay NSW 2127  
Tel : 1300 362 603  
<http://www.samsung.com.au/>
- **BRAZIL :**  
Samsung Eletronica da Amazonia Ltda.  
R. Prof. Manoelito de Ornellas, 303, Terro B  
Chacara Sto. Antonio, CEP : 04719-040  
Sao Paulo, SP  
SAC : 0800 124 421  
<http://www.samsung.com.br/>
- **CANADA :**  
Samsung Electronics Canada Inc.  
Samsung Customer Care  
7037 Financial Drive  
Mississauga, Ontario  
L5N 6R3  
Tel. : 1-800-SAMSUNG (1-800-726-7864)  
Fax. : (905) 542-1199  
<http://www.samsung.ca/>
- **CHILE :**  
SONDA S.A.  
Teatinos 550, Santiago Centro, Santiago, Chile  
Fono: 56-2-5605000 Fax: 56-2-5605353  
56-2-800200211  
<http://www.sonda.com/>  
<http://www.samsung.cl/>
- **COLOMBIA :**  
Samsung Electronics Colombia  
Cra 9 No 99A-02 Of. 106  
Bogota, Colombia  
Tel.: 9-800-112-112  
Fax: (571) 618 - 2068  
<http://www.samsung-latin.com/>  
e-mail : [soporte@samsung-latin.com](mailto:soporte@samsung-latin.com)
- **ESPANA :**  
Samsung Electronics Comercial Iberica, S.A.  
Ciencias, 55-65 (Poligono Pedrosa) 08908  
Hospital de Llobregat (Barcelona)  
Tel. : (93) 261 67 00  
Fax. : (93) 261 67 50  
<http://samsung.es/>
- **FRANCE :**  
SAMSUNG ELECTRONICS FRANCE Service  
Paris Nord 2  
66 rue des Vanesses  
BP 50116 Villepinte  
95950 Roissy CDG Cedex  
Tel : 08 25 08 65 65  
Fax : 01 48 63 06 38  
<http://www.samsungservices.com/>
- **GERMANY :**  
TELEPLAN Rhein-Main GmbH  
Feldstr. 16  
64331 Weiterstadt  
T. 06151/957-1306  
F. 06151/957-1732  
\* EURO 0.12/Min  
<http://www.samsung.de/>
- **HUNGARY :**  
Samsung Electronics Magyar Rt.  
1039, Budapest, Lehel u. 15-17.  
Tel: 36 1 453 1100  
Fax: 36 1 453 1101  
<http://www.samsung.hu/>
- **ITALY :**  
Samsung Electronics Italia S.p.a.  
Via C. Donat Cattin, 5  
20063 Cernusco s/Naviglio (MI)  
Servizio Clienti: 199.153.153  
<http://www.samsung-italia.com/>
- **MEXICO :**  
SAMSUNG ELECTRONICS MEXICO. S.A. DE C.V.  
Saturno NO.44, Col. Nueva Industrial Vallejo  
Gustavo A.Madero C.P.07700, Mexico D.F. Mexico  
TEL. 52-55-5747-5100  
Fax. 52-55-47 52 02  
RFC: SEM950215S98  
<http://www.samsung.com.mx/>
- **NETHERLANDS/BELGIUM/LUXEMBOURG :**  
Samsung Electronics Benelux B. V.  
Fleminglaan 12 2289 CP Rijiswijk, NEDERLANDS  
Service and informatielijn ;  
Belgium :0800-95214, <http://www.samsung.be/>  
Netherlands : 0800-2295214, <http://www.samsung.nl/>
- **PANAMA :**  
Samsung Electronics Latinoamerica( Z.L.) S.A.  
Calle 50 Edificio Plaza Credicorp, Planta Baja  
Panama  
Tel. : (507) 210-1122, 210-1133  
Tel : 800-3278(FAST)  
<http://www.samsung-latin.com/>
- **PERU**  
Servicio Integral Samsung  
Av.Argentina 1790 Lima1. Peru  
Tel: 51-1-336-8686  
Fax: 51-1-336-8551  
<http://www.samsungperu.com/>
- **PORTUGAL :**  
SAMSUNG ELECTRONICA PORTUGUESA S.A.  
Rua Mario Dioniso, Nº2 - 1º Dt. 2795-140 LINDA-A-VELHA  
Tel. 214 148 114/100 Fax. 214 148 133/128  
Free Line 800 220 120  
<http://www.samsung.pt/>
- **SOUTH AFRICA :**  
Samsung Electronics,5 Libertas Road, Somerset Office Park,  
Bryanston Ext 16. Po Box 70006, Bryanston,2021, South Africa  
Tel : 0027-11-549-1621  
Fax : 0027-11-549-1629  
<http://www.samsung.co.za/>
- **SWEDEN/DENMARK/NORWAY/FINLAND :**  
Samsung Electronics AB  
Box 713  
S-194 27 UPPLANDS VASBY  
SVERIGE  
Besöksadress : Johanneslundsvagen 4  
Samsung support Sverige: 020-46 46 46  
Samsung support Danmark : 8088-4646  
Samsung support Norge: 8001-1800  
Samsung support Finland: 0800-118001  
Tel +46 8 590 966 00  
Fax +46 8 590 966 50  
<http://www.samsung.se/>



- **THAILAND :**  
HAI SAMSUNG SERVICE CENTER  
MPA COMPLEX BUILDING,1st-2nd Floor  
175 SOI SUEKSA VIDHAYA SATHON SOI 12  
SILOM ROAD ,SILOM,BANGRAK  
BANGKOK 10500  
TEL : 0-2635-2567  
FAX : 0-2635-2556
- **UKRAINE :**  
SAMSUNG ELECTRONICS REPRESENTATIVE OFFICE IN UKRAINE  
4 Glybochitska str.  
Kiev, Ukraine  
Tel. 8-044-4906878  
Fax 8-044-4906887  
Toll-free 8-800-502-0000  
<http://www.samsung.com.ua/>
- **United Kingdom :**  
Samsung Electronics (UK) Ltd.  
Samsung House, 225 Hook Rise South  
Surbiton, Surrey KT6 7LD  
Tel. : (0208) 391 0168  
Fax. : (0208) 397 9949  
< European Service Center & National Service >  
Stafford Park 12 Telford, Shropshire, TF3 3BJ  
Tel. : (0870) 242 0303  
Fax. : (01952) 292 033  
<http://samsungservice.co.uk/>
- **U.S.A. :**  
Samsung Electronics America  
Service Division  
400 Valley Road, Suite 201  
Mount Arlington, NJ 07856  
Tel. : 1-800-SAMSUNG (1-800-726-7864)  
Fax. : (973)601-6001  
<http://samsungusa.com/>

IMPORTADO POR: SAMSUNG ELECTRONICS MEXICO. S.A. DE C.V.  
Saturno NO.44, Col. Nueva Industrial Vallejo  
Gustavo A.Madero C.P.07700, Mexico D.F. Mexico  
TEL. 52-55-5747-5100

EXPORTADO POR: Samsung Electronics CO.,LTD.  
416, Mae tan-3dong, Yeongtong-gu,  
Suwon City, Kyoungki-Do Korea

## Information

### Terms

- **Dot Pitch**

The image on a monitor is composed of red, green and blue dots. The closer the dots, the higher the resolution. The distance between two dots of the same color is called the 'Dot Pitch'. Unit: mm

- **Vertical Frequency**

The screen must be redrawn several times per second in order to create and display an image for the user. The frequency of this repetition per second is called Vertical Frequency or Refresh Rate. Unit: Hz

Example: If the same light repeats itself 60 times per second, this is regarded as 60 Hz. In this case, flickering of the screen can be detected. To avoid this problem, there is a Flicker-free Mode using a vertical frequency over 70 Hz.

- **Horizontal Frequency**

The time to scan one line connecting the right edge to the left edge of the screen horizontally is called Horizontal Cycle. The inverse number of the Horizontal Cycle is called Horizontal Frequency. Unit: kHz

- **Interlace and Non-Interlace Methods**

Showing the horizontal lines of the screen from the top to the bottom in order is called the Non-Interlace method while showing odd lines and then even lines in turn is called the Interlace method. The Non-Interlace method is used for the majority of monitors to ensure a clear image. The Interlace method is the same as that used in TVs.

- **Plug & Play**

This is a function that provides the best quality screen for the user by allowing the computer and the monitor to exchange information automatically. This monitor follows the international standard VESA DDC for the Plug & Play function.

- **Resolution**

The number of horizontal and vertical dots used to compose the screen image is called 'resolution'. This number shows the accuracy of the display. High resolution is good for performing multiple tasks as more image information can be shown on the screen.

Example: If the resolution is 1024 X 768, this means the screen is composed of 1024 horizontal dots (horizontal resolution) and 768 vertical lines (vertical resolution).

# Information

## Regulatory

### ● FCC Information

#### User Instructions

The Federal Communications Commission Radio Frequency Interference Statement includes the following warning:

**Note:** This equipment has been tested and found to comply with the limits for a Class B digital device, pursuant to Part 15 of the FCC Rules. These limits are designed to provide reasonable protection against harmful interference in a residential installation. This equipment generates, uses, and can radiate radio frequency energy and, if not installed and used in accordance with the instructions, may cause harmful interference to radio communications. However, there is no guarantee that interference will not occur in a particular installation. If this equipment does cause harmful interference to radio or television receptions, which can be determined by turning the equipment off and on, the user is encouraged to try to correct the interference by one or more of the following measures:

- Reorient or relocate the receiving antenna.
- Increase the separation between the equipment and receiver.
- Connect the equipment into an outlet on a circuit different from that to which the receiver is connected.
- Consult the dealer or an experienced radio/TV technician for help.

#### User Information

Changes or modifications not expressly approved by the party responsible for compliance could void the user's authority to operate the equipment. If necessary, consult your dealer or an experienced radio/television technician for additional suggestions. You may find the booklet called How to Identify and Resolve Radio/TV Interference Problems helpful. This booklet was prepared by the Federal Communications Commission. It is available from the U.S. Government Printing Office, Washington, DC 20402, Stock Number 004-000-00345-4.

The party responsible for product compliance:  
SAMSUNG ELECTRONICS CO., LTD  
America QA Lab of Samsung  
3351 Michelson Drive,  
Suite #290, Irvine, CA92612 USA  
Tel) 949-975-7310  
Fax) 949-922-8301

#### Warning

User must use shielded signal interface cables to maintain FCC compliance for the product.

Provided with this monitor is a detachable power supply cord with IEC320 style terminations. It may be suitable for connection to any UL Listed personal computer with similar configuration. Before making the connection, make sure the voltage rating of the computer convenience outlet is the same as the monitor and that the ampere rating of the computer convenience outlet is equal to or exceeds the monitor voltage rating.

For 120 Volt applications, use only UL Listed detachable power cord with NEMA configuration 5-15P type (parallel blades) plug cap. For 240 Volt applications use only UL Listed Detachable power supply cord with NEMA configuration 6-15P type (tandem blades) plug cap.

### ● IC Compliance Notice

This Class B digital apparatus meets all requirements of the Canadian Interference-Causing

Equipment Regulations of ICES-003.

Cet appareil Numérique de classe B respecte toutes les exigences du Règlement NMB-03 sur les équipements produisant des interférences au Canada.

---

● **MPR II Compliance**

This monitor complies with SWEDAC(MPR II) recommendations for reduced electric and magnetic fields.

---

● **European Notice(Europe Only)**

Products with the CE marking comply with the EMC Directive(89/336/EEC), (92/31/EEC), (93/68/EEC) and the Low Voltage Directive (73/23/EEC) issued by the Commission of the European Community.

Compliance with these directives implies conformity to the following European Norms:

- EN55022:1998+A1:2000 - Radio Frequency Interference
- EN55024:1998 - Electromagnetic Immunity of Information Technology Equipment
- EN61000-3-2:1995+A1/A2:1998 - Power Line Harmonics
- EN61000-3-3:1995 - Voltage Fluctuations

---

● **PCT Notice**



---

● **VCCI**

This is a Class B product based on the standard of the Voluntary Control Council for Interference by Information Technology Equipment (VCCI). If this is used near a radio or television receiver in a domestic environment, it may cause radio interference. Install and use the equipment according to the instruction manual.

---

● **TCO'95-Ecological requirements for personal computers (TCO'95 applied model only)**



**AB general requirements**

**AB2 Written Eco-document accompanying the products**

Congratulations! You have just purchased a TCO'95 approved and labelled product! Your choice has provided you with a product developed for professional use. Your purchase has also contributed to reducing the burden on the environment and to the further development of environmentally-adapted electronic products.

**Why do we have environmentally-labelled monitors?**

In many countries, environmental labelling has become an established method for encouraging the adaptation of goods and services to the environment. The main problem as far as monitors and other electronic equipment are concerned is that environmentally harmful substances are used both in the products and during their manufacture. Since it has not been possible so far for the majority of electronic equipment to be recycled in a satisfactory way, most of these potentially damaging substances sooner or later enter Nature.

There are also other characteristics of a monitor, such as energy consumption levels, that are important from both the working and natural environment viewpoints. Since all types of conventional electricity generation have a negative effect on the environment (acidic and climate-influencing emissions, radioactive waste, etc.) it is vital to conserve energy. Electronic equipment in offices consumes an enormous amount of energy, since it is often routinely left running continuously.

#### **What does labelling involve?**

This product meets the requirements for the TCO'95 scheme, which provides for international environmental labelling of monitors. The labelling scheme was developed as a joint effort by the TCO (The Swedish Confederation of Professional Employees), Naturskyddsforeningen (The Swedish Society for Nature Conservation) and NUTEK (The National Board for Industrial and Technical Development in Sweden).

The requirements cover a wide range of issues: environment, ergonomics, usability, emission of electrical and magnetic fields, energy consumption and electrical and fire safety.

The environmental demands concern among other things restrictions on the presence and use of heavy metals, brominated and chlorinated flame retardants, CFCs (freons), and chlorinated solvents. The product must be prepared for recycling and the manufacturer is obliged to have an environmental plan, which must be adhered to in each country where the company conducts its operations policy. The energy requirements include a demand that the monitor after a certain period of inactivity shall reduce its power consumption to a lower level, in one or more stages. The length of time to reactivate the monitor shall be reasonable for the user.

Labelled products must meet strict environmental demands, for example in respect of the reduction of electric and magnetic fields, along with physical and visual ergonomics and good usability.

TCO Development Unit 1996-11-29

On the page this folder you will find a brief summary of the environmental requirements met by this product.

The complete environmental criteria document may be ordered from:

TCO Development Unit  
S-11494 Stockholm  
Sweden

Fax: +46 8 782 92 07

E-mail (Internet): [development@tco.se](mailto:development@tco.se)

Current information regarding TCO'95-approved and labelled products may also be obtained via the Internet, using the address:

<http://www.tco-info.com/>

TCO'95 is a co-operative project between (3 logos)

#### **Environmental Requirements**

Brominated flame retardants are present in printed circuit boards, cables, wires, casings and housings. In turn, they delay the spread of fire. Up to thirty percent of the plastic in a computer casing can consist of flame retardant substances. These are related to another group of environmental toxins, PCBs, which are suspected to give rise to similar harm, including reproductive damage in fish eating birds and mammals, due to the bioaccumulative processes. Flame retardants have been found in human blood and researchers fear that disturbances in foetus development may occur.

- TCO'95 demand requires that plastic components weighing more than 25 grams must not contain organically bound chlorine and bromine.

#### **Lead**

Lead can be found in picture tubes, display screens, solders and capacitors. Lead damages the nervous system and in higher doses, causes lead poisoning.

- TCO'95 requirement Permits the inclusion of lead since no replacement has yet been developed.

#### **Cadmium**

Cadmium is present in rechargeable batteries and in the colour generating layers of certain computer displays. Cadmium damages the nervous system and is toxic in high doses.

- TCO'95 requirement states that batteries may not contain more than 25 ppm (parts per million) of cadmium. The colour-generating layers of display screens must not contain any

cadmium.

### **Mercury**

Mercury is sometimes found in batteries, relays and switches. Mercury damages the nervous system and is toxic in high doses.

- TCO'95 requirement states that batteries may not contain more than 25 ppm (parts per million) of mercury. It also demands that no mercury is present in any of the electrical or electronics components concerned with the display unit.

### **CFCs (freons)**

CFCs (freons) are sometimes used for washing printed circuit boards and in the manufacturing of expanded foam for packaging. CFCs break down ozone and thereby damage the ozone layer in the stratosphere, causing increased reception on Earth of ultraviolet light with consequent increased risks of skin cancer (malignant melanoma).

- The relevant TCO'95 requirement: Neither CFCs nor HCFCs may be used during the manufacturing of the product or its packaging.

---

## ● **TCO'99-Ecological requirements for personal computers (TCO'99 applied model only)**



### **Congratulations!**

You have just purchased a TCO'99 approved and labelled product! Your choice has provided you with a product developed for professional use. Your purchase has also contributed to reducing the burden on the environment and also to the further development of environmentally adapted electronics products.

This product meets the requirements for the TCO'99 scheme which provides for an international environmental and quality labelling of personal computers. The labelling scheme was developed as a joint effort by the TCO(The Swedish Confederation of Professional Employees), Svenska Naturskyddsforeningen(The Swedish Society for Nature Conservation), Statens Energimyndighet(The Swedish National Energy Administration) and SEMKO AB.

The requirements cover a wide range of issues: environment, ergonomics, usability, reduction of electric and magnetic fields, energy consumption and electrical safety.

### **Why do we have environmentally labelled computers?**

In many countries, environmental labelling has become an established method for encouraging the adaptation of goods and services to the environment. The main problem, as far as computers and other electronics equipment are concerned, is that environmentally harmful substances are used both in the products and during their manufacture. Since it is not so far possible to satisfactorily recycle the majority of electronics equipment, most of these potentially damaging substances sooner or later enter nature.

There are also other characteristics of a computer, such as energy consumption levels, that are important from the viewpoints of both the work (internal) and natural (external) environments. Since all methods of electricity generation have a negative effect on the environment (e.g. acidic and climate-influencing emissions, radioactive waste), it is vital to save energy. Electronics equipment in offices is often left running continuously and thereby consumes a lot of energy.

### **What does labelling involve?**

The environmental demands have been developed by Svenska Naturskyddsforeningen (The Swedish Society for Nature Conservation). These demands impose restrictions on the presence and use of heavy metals, brominated and chlorinated flame retardants, CFCs(freons)and chlorinated solvents, among other things. The product must be prepared for recycling and the manufacturer is obliged to have an environmental policy which must be adhered to in each country where the company implements its operational policy.

The energy requirements include a demand that the computer and/or display, after a certain period of inactivity, shall reduce its power consumption to a lower level in one or more stages. The length of time to reactivate the computer shall be reasonable for the user.

Below you will find a brief summary of the environmental requirements met by this product. The complete environmental criteria document may be ordered from:

**TCO Development**  
SE-114 94 Stockholm, Sweden  
Fax: +46 8 782 92 07  
Email (Internet): [development@tco.se](mailto:development@tco.se)

Current information regarding TCO'99 approved and labelled products may also be obtained via the Internet, using the address: <http://www.tco-info.com/>

### **Environmental requirements**

#### **Flame retardants**

Flame retardants are present in printed circuit boards, cables, wires, casings and housings. Their purpose is to prevent, or at least to delay the spread of fire. Up to 30% of the plastic in a computer casing can consist of flame retardant substances. Most flame retardants contain bromine or chloride, and those flame retardants are chemically related to another group of environmental toxins, PCBs. Both the flame retardants containing bromine or chloride and the PCBs are suspected of giving rise to severe health effects, including reproductive damage in fish-eating birds and mammals, due to the bio-accumulative\* processes. Flame retardants have been found in human blood and researchers fear that disturbances in foetus development may occur.

The relevant TCO'99 demand requires that plastic components weighing more than 25 grams must not contain flame retardants with organically bound bromine or chlorine. Flame retardants are allowed in the printed circuit boards since no substitutes are available.

#### **Cadmium\*\***

Cadmium is present in rechargeable batteries and in the colour-generating layers of certain computer displays. Cadmium damages the nervous system and is toxic in high doses. The relevant TCO'99 requirement states that batteries, the colour-generating layers of display screens and the electrical or electronics components must not contain any cadmium.

#### **Mercury\*\***

Mercury is sometimes found in batteries, relays and switches. It damages the nervous system and is toxic in high doses. The relevant TCO'99 requirement states that batteries may not contain any mercury. It also demands that mercury is not present in any of the electrical or electronics components associated with the labelled unit. There is however one exception. Mercury is, for the time being, permitted in the back light system of flat panel monitors as today there is no commercially available alternative. TCO aims on removing this exception when a Mercury free alternative is available.

#### **CFCs (freons)**

The relevant TCO'99 requirement states that neither CFCs nor HCFCs may be used during the manufacture and assembly of the product. CFCs (freons) are sometimes used for washing printed circuit boards. CFCs break down ozone and thereby damage the ozone layer in the stratosphere, causing increased reception on earth of ultraviolet light with e.g. increased risks of skin cancer (malignant melanoma) as a consequence.

#### **Lead\*\***

Lead can be found in picture tubes, display screens, solders and capacitors. Lead damages the nervous system and in higher doses, causes lead poisoning. The relevant TCO'99 requirement permits the inclusion of lead since no replacement has yet been developed.

---

### ● **TCO'03-Ecological requirements for personal computers (TCO'03 applied model only)**



#### **Congratulations!**

The display you have just purchased carries the TCO'03 Displays label. This means that your display is designed, manufactured and tested according to some of the strictest quality and environmental requirements in the world. This makes for a high performance product, designed with the user in focus that also minimizes the impact on our natural environment.

Some of the features of the TCO'03 Display requirements:

### Ergonomics

Good visual ergonomics and image quality in order to improve the working environment for the user and to reduce sight and strain problems. Important parameters are luminance, contrast, resolution, reflectance, colour rendition and image stability.

### Energy

- Energy-saving mode after a certain time - beneficial both for the user and the environment
- Electrical safety

### Emissions

- Electromagnetic fields
- Noise emissions

### Ecology

- The product must be prepared for recycling and the manufacturer must have a certified environmental management system such as EMAS or ISO 14 000
- Restrictions on

o chlorinated and brominated flame retardants and polymers  
o heavy metals such as cadmium, mercury and lead.

The requirements included in this label have been developed by TCO Development in cooperation with scientists, experts, users as well as manufacturers all over the world. Since the end of the 1980s TCO has been involved in influencing the development of IT equipment in a more user-friendly direction. Our labelling system started with displays in 1992 and is now requested by users and IT-manufacturers all over the world.

For more information, Please visit  
[www.tcodevelopment.com](http://www.tcodevelopment.com)

### ● TCO'03 Recycling Information (TCO'03 applied model only)

For recycling information for TCO'03 certified monitors, for the residents in the following countries, please contact the company corresponding to your region of residence. For those who reside in other countries, please contact a nearest local Samsung dealer for recycling information for the products to be treated in environmentally acceptable way.

|           | [U.S.A. Residents Only]   | [European Residents Only]  |   |   |
|-----------|---|--|---|---|
|           | U.S.A.  | SWEDEN   | NORWAY  | GERMANY   |
| COMPANY   | Solid Waste Transfer & Recycling Inc  | ELKRETSSEN   | Elektronikkretur AS   | vfw AG  |
| ADDRESS   | 442 Frelinghuysen Ave<br>Newark, NJ 07114   | ELKRETSSEN Box<br>1357, 111 83<br>Stockholm<br>Barnhusgatan 3, 4 tr. | 6454 Etterstad 0602 Oslo<br>Fyrstikkalln 3B                 | Max Plank Strasse 42<br>50858 Collogne<br>Germany |
| TELEPHONE | 973-565-0181  | 08-545 212 90  | 23 06 07 40   | 49 0 2234 9587 - 0                                |
| FAX       | Fax: 973-565-9485   | 08-545 212 99  | 23 06 07 41   |   |
| E-MAIL    | none  | info@el-kretsen.se   | adm@elektronikkretur.no                                     | vfw.info@vfw-ag.de                                |
| HOME PAGE | <a href="http://www.bcua.org/SolidWaste_Disposal.htm">http://www.bcua.org/SolidWaste_Disposal.htm</a> | <a href="http://www.el-kretsen.se/">http://www.el-kretsen.se/</a>    | <a href="http://www.elretur.no/">http://www.elretur.no/</a> |   |

### ● Medical Requirement





**Classifications:**

In accordance with UL 2601-1/IEC 60601-1, the product is classified as Continuous duty Class I equipment, which is not protected against ingress of liquids. The product is not suitable for use in the presence of a flammable anaesthetic mixture with air or with oxygen or nitrous oxide.

**EMC**

This equipment has been tested and found to comply with the limits for medical devices to the IEC 601-1-2:1994. These limits are designed to provide reasonable protection against harmful interference in a typical medical installation. This equipment generates, uses and can radiate radio frequency energy and, if not installed and used in accordance with the instructions, may cause harmful interference to other devices in the vicinity. However, there is no guarantee that interference will not occur in a particular installation. If this equipment does cause harmful interference to other devices, which can be determined by turning the equipment off and on, the user is encouraged to try to correct the interference by one or more of the following measures:

- Reorient or relocate the receiving device.
- Increase the separation between the equipment.
- Connect the equipment into an outlet on a circuit different from that to which the other device(s) are connected.
- Consult the manufacturer or field service technician for help.

**Video In / RS 232 / Video Out**

Accessories equipment connected to the analog and digital interfaces must be certified to the respective IEC standards (i.e. IEC 950 for data processing equipment and IEC 601-1 for medical equipment.) Furthermore all configurations shall comply with the system standard IEC 601-1-1. Everybody who connects additional equipment to the signal input part or signal output part configures a medical system, and is therefore, responsible that the system complies with the requirements of the system standard IEC 601-1-1. If in doubt, consult the technical services department or your local representative.

**Transport and Storage Limitations:**

Temperature Range of -40°C to +70°C  
Relative Humidity of 10 -95%, non-condensing

---

\* Bio-accumulative is defined as substances which accumulate within living organisms.

\*\* Lead, Cadmium and Mercury are heavy metals which are Bio-accumulative.

**☐ Mercury Statement (LCD Monitor, LCD TV, DLP Projection TV, Projector for USA only)**

LAMP(S) INSIDE THIS PRODUCT CONTAIN MERCURY AND MUST BE RECYCLED OR DISPOSED OF ACCORDING TO LOCAL, STATE OR FEDERAL LAWS  
For details see [lamprecycle.org](http://lamprecycle.org), [eiae.org](http://eiae.org), or call 1-800-Samsung

## Information

### Natural Color

- Natural Color Software Program



One of the recent problems in using a computer is that the color of the images printed out by a printer or other images scanned by a scanner or a digital camera are not the same as those shown on the monitor. The Natural Color S/W is the very solution for this problem. It is a color administration system developed by Samsung Electronics in association with Korea Electronics & Telecommunications Research Institute (ETRI). This system is available only for Samsung monitors and makes the color of the images on the monitor the same as the printed or scanned images. For more information, refer to Help (F1) in the software program.

#### How to install the Natural Color software

Insert the CD included with the Samsung monitor into the CD-ROM Drive. Then, the initial screen of the program installation will be executed. Click Natural Color on the initial screen to install the Natural Color software. To install the program manually, insert the CD included with the Samsung monitor into the CD-ROM Drive, click the [Start] button of Windows and then select [Execute]. Enter D:\color\eng\setup.exe and then press the key. (If the drive where the CD is inserted is not D:\, enter the applicable drive.)

#### How to delete the Natural Color software program

Select [Setting]/[Control Panel] on the [Start] menu and then double-click [Add/Delete a program]. Select Natural Color from the list and then click the [Add/Delete] button.

## Information

### For Better Display

1. Adjust computer resolution and screen injection rate (refresh rate) in control panel of computer as described below to enjoy the best quality of picture. You can have an uneven quality of picture in the screen if the best quality of picture is not provided in TFT-LCD.
  - Resolution: 1024 x 768
  - Vertical frequency (refresh rate): 60 Hz
2. TFT LCD panel manufactured by using advanced semiconductor technology with precision of 99.999% above is used for this product. But the pixels of RED, GREEN, BLUE and WHITE color seem to be bright sometimes or some of black pixels could be seen. This is not from bad quality and you can use it without uneasiness.
  - For example, the number of TFT LCD pixels that is contained in this product are 2,359,296.
3. When you clean the monitor and the panel outside, please apply the recommended small amount of cleaner by using soft and dry cloth and polish it. Let LCD area not to be forced but to be scrubbed out softly. If excessive force is applied, you can have a stain on it.
4. If you are not satisfied with the quality of picture, you can get better quality of picture by executing "auto adjustment function" in display screen that is appeared as window termination button is pressed. If there's still noise after automatic adjustment, use FINE/COARSE adjustment function.
5. If you view a fixed screen for an extended period of time, residual image or blurriness may appear.  
Change the mode to energy save or set a screensaver to moving picture when you need to be away from the monitor for an extended period of time.

## PRODUCT INFORMATION (Image Retention Free)

LCD Monitors and TVs may have image retention when switching from one image to another especially after displaying a stationary image for a long time. This guide is to demonstrate correct usage of LCD products in order to protect them from Image retention.

### • What is Image retention ?

During normal operation of a LCD panel, pixel image retention doesn't occur. However, if the same image is displayed for a long time, a slight difference in electric charge accumulates between the two electrodes which encase the liquid crystal. This may cause the liquid crystal to build up in a certain areas of the display. Thus, the previous image is retained when switching to a new video image. All display products, including LCD, are subject to image retention. This is not a product defect.

Please follow the suggestions below to protect your LCD from image retention

### • Power Off, Screen Saver, or Power Save Mode

Ex)

- Turn the power off when using a stationary pattern.
  - Turn the power off for 4 hours after 24 hours in use
  - Turn the power off for 2 hours after 12 hours in use
- Use a Screen saver if possible
  - Screen saver in one color or a moving image is recommended.
- Set the Monitor to power off with the PC Display Properties Power Scheme.

### • Suggestions for specific applications

Ex) Airports, Transit Stations, Stock Markets, Banks, and Controlling Systems

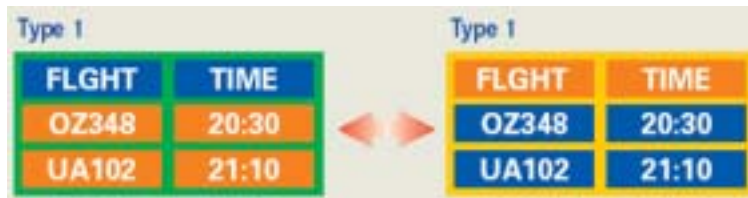
We recommend that you follow set up of your display system program as below:

### • Display Information together with Logo or Moving image cycle.

Ex) Cycle : Display Information for 1 hour followed by a Display Logo or moving image for 1 minute.

### • Change the Color Information periodically (Use 2 different colors).

Ex) Rotate the Color Information with 2 colors every 30 minutes.



Avoid using a combination of characters and background color with large difference in luminance.

Avoid using Grey colors, which can cause Image retention easily.

- Avoid: Colors with big difference in luminance (Black & White, Grey)

Ex)



- Recommended settings: Bright colors with little difference in luminance

- Change the characters color and background color every 30 minutes

Ex)



- Every 30 minutes, change the characters with movement.

Ex)

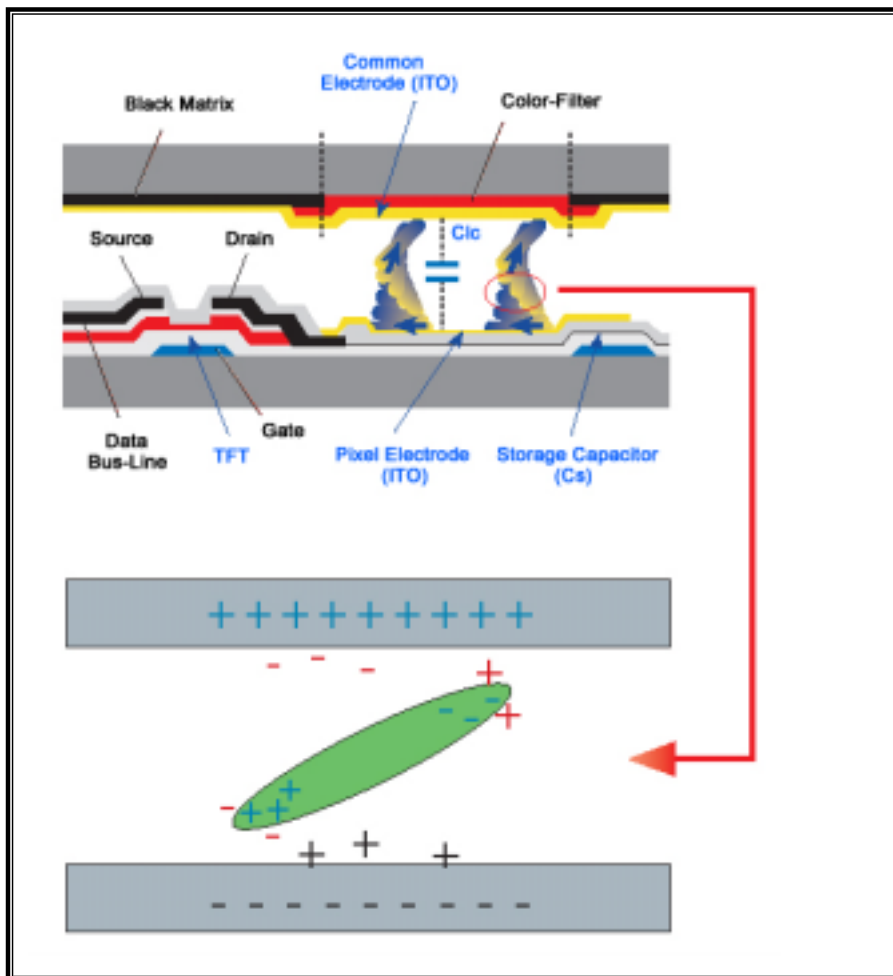


- The best way to protect your monitor from Image retention is to set your PC or System to operate a Screen Saver program when you are not using it.

Image retention may not occur when a LCD panel is operated under normal conditions.

Normal conditions are defined as continuously changing video patterns. When the LCD panel is operated for a long time with a fixed pattern (-over 12 hours-), there may be slight difference in voltage between electrodes that work the liquid crystal (LC) in a pixel. The voltage difference between electrodes increases with time, forcing the liquid crystal to lean. When this occurs, the previous image may be seen when the pattern is changed.

To prevent this, the accumulated voltage difference must be decreased.



- Our LCD Monitor satisfies ISO13406-2 Pixel fault Class II

## Information

### Authority

**Information in this document is subject to change without notice.  
© 2004 Samsung Electronics Co., Ltd. All rights reserved.**

Reproduction in any manner whatsoever without the written permission of Samsung Electronics Co., Ltd. is strictly forbidden.

Samsung Electronics Co., Ltd. shall not be liable for errors contained herein or for incidental or consequential damages in connection with the furnishing, performance, or use of this material.

Samsung is the registered trademark of Samsung Electronics Co., Ltd.; Microsoft, Windows and Windows NT are registered trademarks of Microsoft Corporation; VESA, DPMS and DDC are registered trademarks of Video Electronics Standard Association; the ENERGY STAR name and logo are registered trademarks of the U.S. Environmental Protection Agency (EPA). As an ENERGY STAR Partner, Samsung Electronics Co., Ltd. has determined that this product meets the ENERGY STAR guidelines for energy efficiency. All other product names mentioned herein may be the trademarks or registered trademarks of their respective owners.

## Free Manuals Download Website

<http://myh66.com>

<http://usermanuals.us>

<http://www.somanuals.com>

<http://www.4manuals.cc>

<http://www.manual-lib.com>

<http://www.404manual.com>

<http://www.luxmanual.com>

<http://aubethermostatmanual.com>

Golf course search by state

<http://golfingnear.com>

Email search by domain

<http://emailbydomain.com>

Auto manuals search

<http://auto.somanuals.com>

TV manuals search

<http://tv.somanuals.com>