

Digital Photo Frame

User Manual

The color and the appearance may differ depending on the product,
and the specifications are subject to change
without prior notice to improve the performance.



Safety Instructions

These safety instructions must be followed to ensure your safety and prevent property damage. Make sure to read the instructions carefully and use the product in the correct manner.



Warning

Failing to follow the precautions marked with this sign, may result in a serious injury or even a fatality.



Caution

Failing to follow the precautions marked with this sign, may result in a personal injury or property damage.



Do not perform.

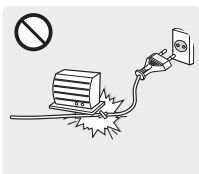


Must be followed.

Power Related



Warning



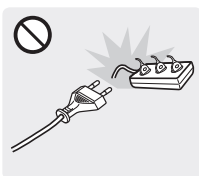
Avoid bending or twisting the power cord excessively and avoid placing heavy objects on the cord.

- Otherwise, it may result in electric shock or fire due to a damaged power cord.



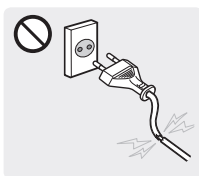
Avoid plugging in or unplugging the power supply with wet hands.

- Otherwise, it may result in electric shock.



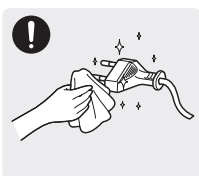
Avoid connecting multiple electric appliances to a single wall outlet.

- Otherwise, it may result in fire due to overheating of the wall outlet.



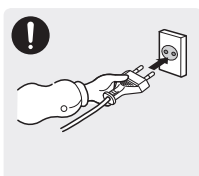
Avoid using a damaged power cord or plug or a loose power outlet.

- Otherwise, it may result in electric shock or fire.



If the pins of the power plug or the wall outlet are covered in dust, clean it using a dry cloth.

- Otherwise, it may result in fire.

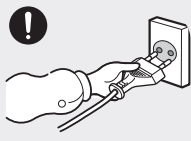


Plug the power plug in firmly.

- Otherwise, it may result in fire.



Caution



When unplugging the power plug from the wall outlet, make sure to hold it by the plug and not by the cord.

- Otherwise, it may result in electric shock or fire.



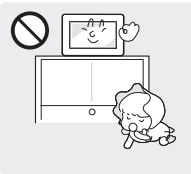
Make sure to use only the power cord supplied by our company. In addition, do not use the power cord of another electric appliance.

- Otherwise, it may result in electric shock or fire.

Installation Related

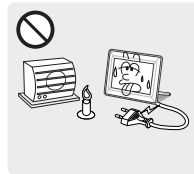


Warning



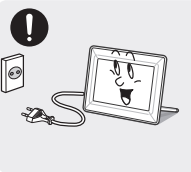
Avoid installing the product at an easily reachable height where children may reach it.

- If a child touches the product, the product may fall and this may result in injury.



Keep the power cord and the product away from a heater.

- Otherwise, it may result in electric shock or fire.



Make sure to turn the power off and disconnect the power plug from the outlet before moving the product. Make sure to disconnect the connection cables from other devices as well.

- Otherwise, it may result in electric shock or fire due to a damaged power cord.



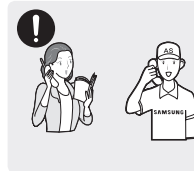
Keep the plastic bags used to pack the product away from children.

- If children place the plastic bags over their heads, they may suffocate.



Avoid installing the product in a location that is unstable or exposed to excessive vibrations such as on an unstable or slanted shelf.

- The product may fall and this may result in damage to the product or injury.
- If you use the product in a location exposed to excessive vibrations, it may result in a problem with the product or fire.



If the product is installed in a location where the operating conditions vary considerably, a serious quality problem may occur due to the surrounding environment. In this case, install the product only after consulting one of our service engineers about the matter.

- Places exposed to microscopic dust, chemicals, too high or low temperature, high humidity, such as airports or stations where the product is continuously used for a long time and so on.

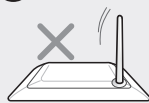


Caution



When installing the product on a console or shelf, make sure that the front of the product does not protrude out of the console or shelf.

- Otherwise, this may cause the product to fall off and result in a malfunction or injury.
- Make sure to use a cabinet or shelf suitable to the size of the product.



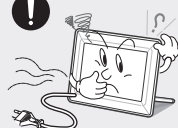
Do not place the product face down on the floor.

- This may damage the panel of the product.

Usage Related



Warning



If the product generates a strange noise, a burning smell, or smoke, unplug the power plug immediately and contact a service center.

- Otherwise, it may result in electric shock or fire.



Avoid using a humidifier or cooker near the product.

- Otherwise, it may result in electric shock or fire.



Do not let the product drop while moving it. If you drop the product or the case is damaged, turn the power off and unplug the power cord. Contact a service center.

- Otherwise, it may result in fire or electric shock.



Since a high voltage runs through the product, never disassemble, repair or modify the product yourself.

- Otherwise, it may result in fire or electric shock.
- If the product needs to be fixed, contact a service center.



Avoid lifting up or move the product by holding only the power cord or signal cable.

- Otherwise, it may result in electric shock, fire or a problem with the product due to damage to the cable.



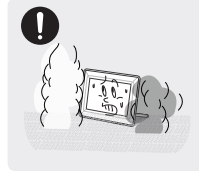
Disconnect the power plug when there is thunder or lightning.

- Otherwise, it may result in electric shock or fire.



Avoid turning the product upside down or move the product holding only the stand.

- This may cause the product to fall resulting in damage to the product or injury.



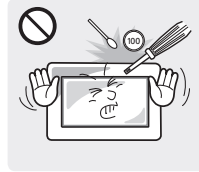
When a gas leak occurs, do not touch the product or the power plug and ventilate immediately.

- A spark may result in an explosion or fire.



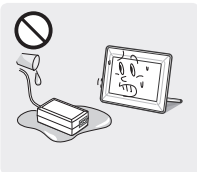
Avoid dropping an object over the product or cause impact to the product.

- Otherwise, it may result in electric shock or fire.



Avoid inserting metal objects such as a chopsticks, coins or hairpins, or inflammable objects into the product (the vents, ports, etc).

- If water or an alien substance enters the product, turn the power off, unplug the power cord and contact a service center. Otherwise, it may result in a problem with the product, electric shock or fire.



Keep the product away from places exposed to oil, smoke or moisture; do not install inside a vehicle.

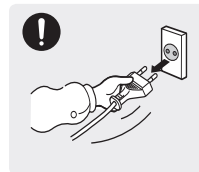
- Otherwise, it may result in electric shock or fire. In particular, avoid operating the monitor near water or outdoors where it could be exposed to snow or rain.



Caution



Keep the small accessories in a location out of the reach of children.



When not using the product for a long time such as leaving your home, unplug the power cord from the wall outlet.

- Otherwise, it may cause dust accumulation and result in fire caused by overheating or short circuit or result in an electric shock.



Watching the product from too close a distance continuously may damage your eyesight.

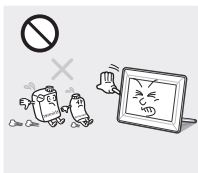
- It is important to give your eyes some rest (5 minutes every hour) when viewing the product screen for long periods of time. This will alleviate any eye strain.

Cleaning Related



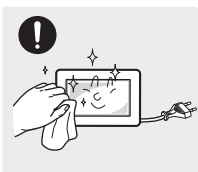
When cleaning the product, do not spray water directly over the product parts. Avoid spraying cleansing agent directly onto the product.

- Make sure that water does not enter the product. Otherwise, it may result in fire, electric shock or a problem with the product.
- This may result in the exterior being deformed or the print being removed.



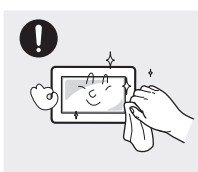
Since using a surfactant, which contains a large amount of alcohol, solvent or other strong chemicals, may result in the discoloration or cracking of the product exterior or the panel surface coming off, be sure to use the recommended cleansing agent only.

- Otherwise, this may result in the discoloration and distortion of the structure and the screen surface may peel off.



When cleaning the product, disconnect the power cord and clean the product with the supplied cleaning cloth.

- This may result in the exterior being deformed or the print being removed.



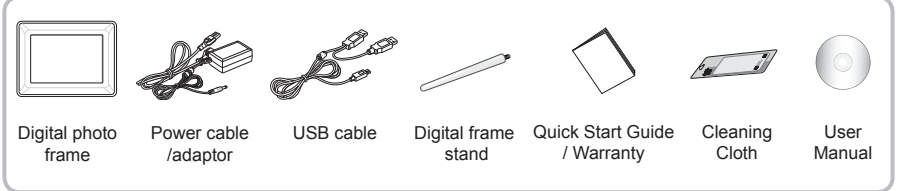
Since the exterior of the product is easily scratched, be sure to use the supplied cleansing cloth.

- However, if the cloth is contaminated by alien substances, it may result in scratches to the exterior; therefore shake off any alien substances from the cloth before using it.

Product and Components

Components

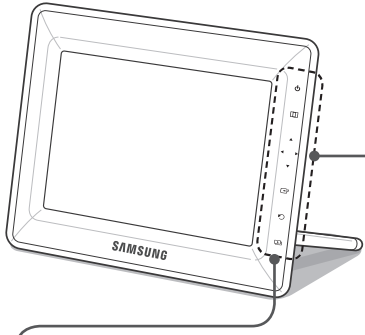
Please check to make sure that all of the following items are included in your delivered package before using the product.



* Not available in all locations

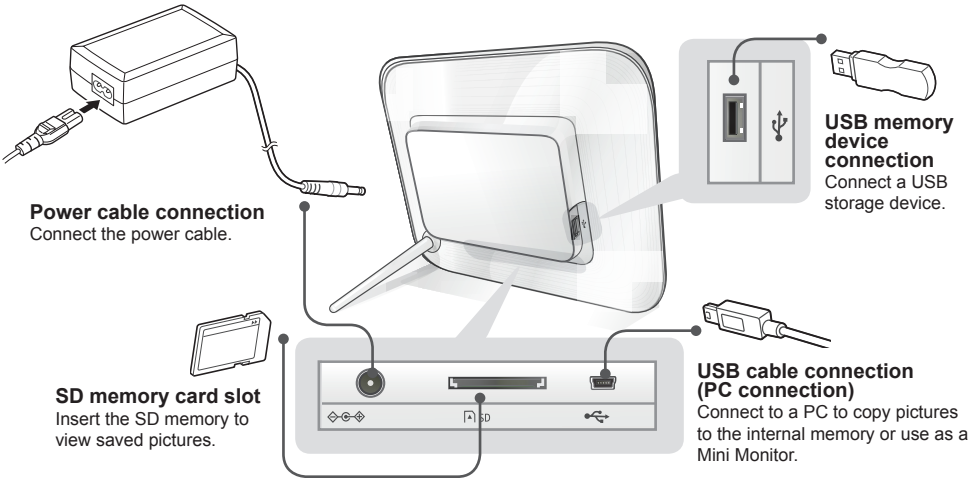
Name and function of each part

Touch one of the operating buttons lightly.



| Touch button | Description |
|--------------|---|
| | Turn the frame on; Turn the frame off (touch and hold) |
| | Access menus |
| | Navigates or changes options on the menu. |
| | Selects an option on the menu. |
| | Returns to the previous menu. (Moves to the main screen if pressed for 2 seconds.) |
| | Starts a slide show. |

Caution: While the photo frame is booting, do not press and hold the touch buttons. Touch buttons pressed while the photo frame is booting will not operate.



Power cable connection
Connect the power cable.

SD memory card slot
Insert the SD memory to view saved pictures.

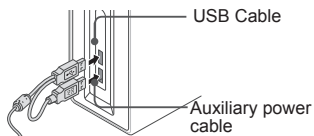
USB memory device connection
Connect a USB storage device.

USB cable connection (PC connection)
Connect to a PC to copy pictures to the internal memory or use as a Mini Monitor.

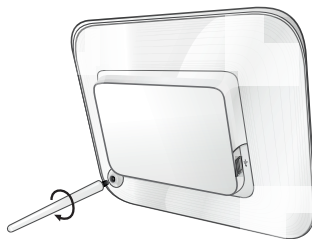


700T can be used by connecting to a PC via the USB cable (along with the auxiliary power cable).

However, it may not operate properly if the power supply in your PC is unstable. In this case, connect the power adapter.



Set up your digital frame



Screw the digital frame stand until it is fixed completely to the frame.

Using the Digital Frame

Viewing pictures

Pictures saved in the product's internal memory or an external memory device can be viewed in a wide range of options. Only an SD memory card or USB memory device can be used as an external memory device. Refer to the following page for menu options.

Press [Home].



Use [Up], [Down], [Left], [Right] to move to the picture you want and press [Enter].



A slide show begins from the picture you selected.



If you press the [Home] button during a slide show, the <Home>, <Rotate>, <Zoom> and <Settings> menus will appear.

- To use <Rotate>, <View Mode> must be set as <Photo Only>, <Photo & Clock> or <Photo & Calendar>.
- To use <Zoom>, <View Mode> must be set as <Photo Only> or <Photo & Clock>.

Using as a Mini Monitor

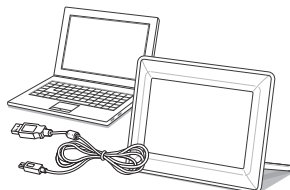
Connect the digital frame to a PC with the USB cable to use as a Mini Monitor.

Connect the digital frame to a PC with the USB cable to use as a Mini Monitor (aux. monitor). **You must install Frame Manager on your PC in order to use the product as a Mini Monitor.**

Log on to <http://samsung.com/> to download Frame Manager and for instructions on using the product as a Mini Monitor.

Only one auxiliary monitor can be used at a time.

* The buttons on the digital photo frame are disabled (in Mass Storage or Mini Monitor mode) when connected to a PC.



PC requirements for use as a Mini Monitor

- OS: Windows XP SP2, Vista
- USB: Extended Host Controller(EHCT) USB 2.0 supported
- RAM: 256MB or higher
- CPU: 2.4GHz or higher

Firmware update



Preparations for firmware update

- Digital photo frame
- Firmware file for update
- USB memory or SD card



Download and install the latest firmware from the Samsung Electronics homepage.

- 1 Log on to <http://samsung.com/> and enter the model name in the search field. **(700T)**
- 2 Download and decompress the appropriate firmware.
- 3 Copy the decompressed *****.isp** file to the SD card or USB memory device and connect to the digital frame.
- 4 Select **<Settings>** - **<Support>** - **< Upgrade Software>** with the buttons on the product. The firmware is updated. When the update is finished, turn the digital frame off, remove the external memory device (SD card/USB memory device), and turn the digital frame on again. You can check if the firmware version has been updated in **<Settings>** - **<Support>** - **<Product Information>**.

Menu Description

You can set various functions using buttons.



| | |
|-------------------------|--|
| <Home> | Moves to the main screen. |
| <Copy> | If an external memory device (SD memory card/ USB memory device) is connected to the product, <ul style="list-style-type: none"> • Copies pictures in an external memory device to the internal memory. • Copies pictures in the internal memory to an external memory device. |
| <Delete> | Deletes pictures in the internal memory or an external memory device. |
| <Select Multiple Files> | Selects multiple files to run functions like slide show, copy, delete, etc. |
| <Select Storage Device> | If an external memory device (SD memory card/USB memory device) is connected to the product, <ul style="list-style-type: none"> • Select the internal memory or an external memory device (SD memory card/USB memory device). |
| <Settings> | Moves to the Settings screen. |

* If you use the MENU, select the picture and then, press the [MENU] button.

The current time configured in **<Settings>** - **<Clock>** is displayed. The current time setting can be erased if the power adaptor is disconnected for a prolonged period of time. Please keep the power adaptor connected.

Connect the digital frame to a PC with the USB cable to use as a Mini Monitor.



| | | |
|----------------|------------------------------|--|
| Photos | <Slideshow Transition> | Sets the slide show effects. • <No Effect / Fade / Blinds / Cross Comb / Mosaic / Checkerboard / Dissolve / Wipe / Extend / Silk / Corner Transition / Wheel / Ellipse / Random> |
| | <Slideshow Speed> | Sets the slide show speed. • <Fast / Normal / Slow> Images of large file sizes may not be displayed at the currently configured slideshow speed. |
| | <Slideshow Mode> | • <All Photos / Photos in folder / One photo> |
| | <Slideshow Order> | Sets the slide show order. • <Normal / Shuffle> |
| | <View Mode> | Sets the slide show display mode. • <Photo Only / Photo & Clock / Photo & Calendar / Multiview 1 / Multiview 2> |
| | <Aspect Ratio> | • <Original Fit>: A picture smaller than the screen is displayed in its original size and a picture bigger than the screen size is reduced in direct proportion to the screen size. • <Auto Fit>: Fits the picture in direct proportion to the screen size. • <Fit to Width>: Fits the picture to the screen's horizontal width. |
| Clock | <Display Photo Info> | Displays a picture's file name and date of creation. |
| | <Clock Set> | Sets the current time. |
| | <Date Format> | Select the month, year, day display mode. (YYYY/MM/DD, MM/DD/YYYY, DD/MM/YYYY) |
| | <Time Format> | Selects the time display mode (12 hours, 24 hours). |
| General | <Clock Type> | Selects the clock display mode (<Clock Only>, <Clock & Calendar>). |
| | <Quick Setup> | Easy settings for frequently used functions. (<View Mode>, <Slideshow Transition>, <Clock Set>, and <Startup Mode>) |
| | <Language> | Selects the OSD (on-screen display) language. |
| | <Brightness> | Adjusts the screen brightness. |
| | <Auto Picture On/Off > | Sets the screen to automatically turn on and off at certain times. |
| | <Startup Mode> | Selects the screen to be displayed when the digital frame is switched on. • <Home> / <Last Mode> / <Slideshow> |
| | <Screen Saver> | If there is no button operation for 10 minutes, the currently configured screensaver will appear. • <Slideshow> / <Clock> |
| | <Frame Memory Copy> | • <Original Size>: Copies an original file as is. • <Resized>: Matches the screen's optimal resolution by reducing the file size and then copies. |
| Support | <Activate USB Communication> | Selects the recognition mode to be used when the digital frame is connected to a PC with a USB cable. Use as a removable disk or Mini Monitor. Use as a digital photo frame. |
| | <Upgrade Software> | Updates the firmware. |
| | <Reset> | You can reset various settings to the factory default settings. (Time setting and screen language setting excluded). |
| | <Product Guide> | Product functions guide |
| | <Product Information> | Displays product model name, firmware version, internal memory and copyrights. |

Troubleshooting

Check the below table first when a malfunction is suspected.

| Symptoms and questions | Causes and corrections |
|---|--|
| The power won't switch on. Spots which look like light leaking can be seen on the edges of the clock screen. | Ensure that the power cable is correctly connected. Black LCD panel screens by nature can have this effect, which is not a defect. |
| The time setting is wrong. | The current time setting can be erased if the power adaptor is disconnected for a prolonged period of time. Keep the power adaptor connected. |
| It takes a long time for images to be displayed after the power has been turned on. It takes a long time to move from one image to the next. | It is recommended to reduce the picture resolution. |
| I can't copy more files even when there is excess capacity to use in the internal memory. | You may be unable to copy files if the FAT section of the internal memory is damaged. Try again after formatting the internal memory. |
| I've connected an external memory device (USB memory device or SD memory card) but it doesn't work. | <ul style="list-style-type: none"> • 700T can be used by connecting the power adaptor instead of the USB cable. • Ensure that the external memory device has been connected properly or try formatting it. • Ensure that JPEG files are saved in the external memory device. • Abnormal picture files (0 Kbyte, broken JPEG) will not be displayed on the screen. • The connected external memory device is not supported. Try another storage device. |
| JPEG files are not displayed. | <ul style="list-style-type: none"> • Progressively saved JPEG files or JPEG files saved as CMYK color coordinates will not be displayed. • Images edited by a JPEG image editor (Photoshop, Paintshop, etc.) may not be displayed normally. Edit the image on a PC, convert back to JPEG format, save, and try again. |
| Some pictures are not displayed as a slideshow. | This product can accommodate a maximum of 4,000 pictures. Any excess pictures will not be recognized and will not be displayed as a slide show. |
| The picture size changes when I rotate it. | The picture size changes automatically depending on the rotation angle (90°, -90°) in order to display the entire image on the screen. |
| The picture looks stretched horizontally or vertically. | Press [□] on the slide show screen. Go to <Settings> - <Photos> - <Aspect Ratio> and change the setting to <Original Fit> and check again. |
| Previews are too slow. | Previews may be slow for large-sized images and multiple images. |
| Slide show effects are displayed when I have saved only one picture I want in the memory card or when I pause the slide show with multiple pictures saved in the memory card. | The slide show effects will be displayed automatically in order to protect the panel. This is not an error. |
| In what order are the pictures, which are saved in the memory card, displayed? | They are arranged according to the file names. The slide show display order is determined in the order of number, upper-case letter, and lower-case letter. Please note that a file name can have up to 255 characters in languages that use the roman alphabet and up to 127 in other languages. |
| The slide show doesn't start automatically. | Ensure that the <Startup Mode> is set to <Slideshow> in <Settings> - <General>. |
| I have set <Auto Picture On/Off> but the screen doesn't switch on automatically. | <ul style="list-style-type: none"> • Ensure that the current time has been set correctly. • The screen will not switch on automatically if you have turned the digital frame off by pressing [⏻] when <Auto Picture On/Off> has been set. The screen switches on automatically only if the power has been switched off automatically at the Auto Picture Off time. |
| The pictures I copied from a USB memory or SD card onto the internal memory have changed in resolution and file size. | This product is designed to reduce the file size of high-resolution pictures to fit the screen's ideal resolution when they are copied onto the internal memory. If you want to disable the settings, you can change to the original size by selecting <Settings> - <General> - <Frame Memory Copy>. |

The digital frame is not recognized as a removable disk when I connect it to a PC with the USB cable.

The **700T** has 2 USB connectors. You must connect the USB connector [↔] because the digital frame will not be recognized as a removable disk if only the auxiliary power (DC 5V) connector is connected to a PC.

Product Specifications

| Classification | | Details |
|------------------|-------------------------------|---|
| Model name | | 700T |
| Panel | Type | 7" TFT LCD |
| | Resolution | 800 x 600 |
| Supported format | | JPEG (Progressive or CMYK type pictures are not supported.) |
| Internal memory | | 1 GB |
| USB | | Host (USB 2.0) / Device (USB 2.0) |
| Power supply | Rating | External DC power supply device (12 V) |
| | Power consumption | General: 5.3 W / Power off: Under 1 W |
| General | Size (Width x height x depth) | 200.7 x 165.3 x 30.0 mm |
| | Weight | 350 g |

The product design may differ according to the model, and specifications are subject to change without prior notice for product performance enhancement.

This device is a Class B digital apparatus.

- Recommended memory capacities for different types of memory cards:
(The recommended memory capacities indicated below are based on our factory test and may differ depending on the manufacturer.)

| | |
|-----------|--------------|
| SD | Up to 2 GB |
| microSD | Up to 2 GB |
| miniSD | Up to 256 MB |
| SDHC | Up to 16 GB |
| microSDHC | Up to 8 GB |
| USB | Up to 32 GB |

Contact SAMSUNG WORLD-WIDE

If you have any questions or comments relating to Samsung products, please contact the SAMSUNG customer care center.

| North America | | |
|----------------------|---|---|
| U.S.A | 1-800-SAMSUNG (726-7864) | http://www.samsung.com |
| CANADA | 1-800-SAMSUNG (726-7864) | http://www.samsung.com |
| MEXICO | 01-800-SAMSUNG (726-7864) | http://www.samsung.com |
| Latin America | | |
| ARGENTINA | 0800-333-3733 | http://www.samsung.com |
| BRAZIL | 0800-124-421, 4004-0000 | http://www.samsung.com |
| CHILE | 800-SAMSUNG (726-7864) | http://www.samsung.com |
| COLOMBIA | 01-8000112112 | http://www.samsung.com |
| COSTA RICA | 0-800-507-7267 | http://www.samsung.com |
| ECUADOR | 1-800-10-7267 | http://www.samsung.com |
| EL SALVADOR | 800-6225 | http://www.samsung.com |
| GUATEMALA | 1-800-299-0013 | http://www.samsung.com |
| HONDURAS | 800-7919267 | http://www.samsung.com |
| JAMAICA | 1-800-234-7267 | http://www.samsung.com |
| NICARAGUA | 00-1800-5077267 | http://www.samsung.com |
| PANAMA | 800-7267 | http://www.samsung.com |
| PUERTO RICO | 1-800-682-3180 | http://www.samsung.com |
| REP. DOMINICA | 1-800-751-2676 | http://www.samsung.com |
| TRINIDAD & TOBAGO | 1-800-SAMSUNG (726-7864) | http://www.samsung.com |
| VENEZUELA | 0-800-100-5303 | http://www.samsung.com |
| Europe | | |
| AUSTRIA | 0810 - SAMSUNG (7267864, € 0.07/min) | http://www.samsung.com |
| BELGIUM | 02-201-24-18 | http://www.samsung.com/be (Dutch) http://www.samsung.com/be_fr (French) |
| CZECH | 800 - SAMSUNG (800-726786) | http://www.samsung.com |
| | Samsung Zrt., česká organizační složka, Oasis Florenc, Sokolovská394/17, 180 00, Praha 8 | |
| DENMARK | 70 70 19 70 | http://www.samsung.com |
| EIRE | 0818 717100 | http://www.samsung.com |
| ESTONIA | 800-7267 | http://www.samsung.com |
| FINLAND | 030 - 6227 515 | http://www.samsung.com |
| FRANCE | 01 48 63 00 00 | http://www.samsung.com |
| GERMANY | 01805 - SAMSUNG (726-7864 € 0.14/Min) | http://www.samsung.com |
| HUNGARY | 06-80-SAMSUNG (726-7864) | http://www.samsung.com |
| ITALIA | 800-SAMSUNG (726-7864) | http://www.samsung.com |
| LATVIA | 8000-7267 | http://www.samsung.com |
| LITHUANIA | 8-800-77777 | http://www.samsung.com |
| LUXEMBURG | 261 03 710 | http://www.samsung.com |
| NETHERLANDS | 0900-SAMSUNG (0900-7267864) (€ 0,10/Min) | http://www.samsung.com |
| NORWAY | 815-56 480 | http://www.samsung.com |
| POLAND | 0 801 15AMSUNG (172678), 022-607-93-33 | http://www.samsung.com |
| PORTUGAL | 80820-SAMSUNG (726-7864) | http://www.samsung.com |
| SLOVAKIA | 0800-SAMSUNG (726-7864) | http://www.samsung.com |
| SPAIN | 902 - 1 - SAMSUNG (902 172 678) | http://www.samsung.com |
| SWEDEN | | |
| | 0771 726 7864 (SAMSUNG) | http://www.samsung.com |
| SWITZERLAND | | |
| | 0848 - SAMSUNG (7267864, CHF 0.08/min) | http://www.samsung.com/ch , http://www.samsung.com/ch_fr (French) |
| U.K | | |
| | 0845 SAMSUNG (7267864) | http://www.samsung.com |
| CIS | | |
| ARMENIA | 0-800-05-555 | - |
| AZERBAIDIAN | 088-55-55-555 | - |
| BELARUS | 810-800-500-55-500 | - |
| GEORGIA | 8-800-555-555 | - |
| KAZAKHSTAN | 8-10-800-500-55-500 | - |
| KYRGYZSTAN | 00-800-500-55-500 | http://www.samsung.com |
| MOLDOVA | 00-800-500-55-500 | - |
| RUSSIA | 8-800-555-55-55 | http://www.samsung.com |
| TADJIKISTAN | 8-10-800-500-55-500 | http://www.samsung.com |
| UKRAINE | 8-800-502-0000 | http://www.samsung.com/ua , http://www.samsung.com/ua_ru |
| UZBEKISTAN | 8-10-800-500-55-500 | http://www.samsung.com |
| Asia Pacific | | |
| AUSTRALIA | 1300 362 603 | http://www.samsung.com |
| CHINA | 400-810-5858 010-6475 1880 | http://www.samsung.com |
| HONG KONG | (852) 3698 - 4698 | http://www.samsung.com/hk http://www.samsung.com/hk_en/ |
| INDIA | 3030 8282 1800 110011 1800 3000 8282 1800 266 8282 | http://www.samsung.com |
| INDONESIA | 0800-112-8888 | http://www.samsung.com |
| JAPAN | 0120-327-527 | http://www.samsung.com |
| MALAYSIA | 1800-88-9999 | http://www.samsung.com |
| NEW ZEALAND | 0800 SAMSUNG (0800 726 786) | http://www.samsung.com |
| PHILIPPINES | 1-800-10-SAMSUNG (726-7864) 1-800-3-SAMSUNG (726-7864) 1-800-8-SAMSUNG (726-7864) 02-5805777 | http://www.samsung.com |
| SINGAPORE | 1800-SAMSUNG(726-7864) | http://www.samsung.com |
| TAIWAN | 0800-329-999 | http://www.samsung.com |
| THAILAND | 1800-29-3232 02-689-3232 | http://www.samsung.com |
| VIETNAM | 1 800 588 889 | http://www.samsung.com |
| Middle East & Africa | | |
| BAHRAIN | 8000-4726 | - |
| JORDAN | 800-22273 | - |
| SOUTH AFRICA | 0860-SAMSUNG(726-7864) | http://www.samsung.com |
| TURKEY | 444 77 11 | http://www.samsung.com |
| U.A.E | 800-SAMSUNG(726-7864) | http://www.samsung.com |

Free Manuals Download Website

<http://myh66.com>

<http://usermanuals.us>

<http://www.somanuals.com>

<http://www.4manuals.cc>

<http://www.manual-lib.com>

<http://www.404manual.com>

<http://www.luxmanual.com>

<http://aubethermostatmanual.com>

Golf course search by state

<http://golfingnear.com>

Email search by domain

<http://emailbydomain.com>

Auto manuals search

<http://auto.somanuals.com>

TV manuals search

<http://tv.somanuals.com>