

Digital Photo Frame **MP3** **JPG** **MPG** **USB**  
**SPF-72V**



### Frame manager

Click **Frame Manager icon** to run the install file.  
 You can find the installed Frame Manager in **C:\Program Files\Samsung\Frame Manager**.  
 To run Frame Manager, click Start and point to Programs,  
 and then click **Samsung > Frame Manager > Frame Manager**.



#### Safety Instructions

Safety Symbols  
 Power  
 Installation  
 Using and Cleaning

#### Overview

Features  
 Components  
 Front  
 Back  
 Side

#### Connecting

Power  
 USB  
 Memory Card

#### Using

Buttons  
 Photos, Web Photos  
 Music  
 Video  
 Settings

#### Applications

Initial Settings  
 User Recommendations  
 Settings and Examples  
 Related Programs

#### Specifications

Specifications  
 Supported Files

#### Troubleshooting

Troubleshooting  
 Terminology  
 Service Centers



Using, copying or reproducing the whole or part of this manual without written permission from Samsung Electronics is prohibited. The content of this manual is subject to change without prior notice. ©2007 All right reserved. Samsung Electronics.

Digital Photo Frame  
**SPF-72V**





Digital Photo Frame MP3 JPG MPG USB  
**SPF-72V**

[Safety Instructions](#) | [Overview](#) | [Connecting](#) | [Using](#) | [Applications](#) | [Specifications](#) | [Troubleshooting](#)

## Safety Instructions

[↑ TOP](#)

[↑ MAIN](#)

[↑ ↻](#)

[Safety Symbols](#)

[Power](#)

[Installation](#)

[Using and  
Cleaning](#)

### ▣ Safety Symbols

※ Make sure to follow the directions below to prevent accidents and damage to the product.

#### Warning

Failure to follow the accompanying directions may lead to serious injury or death.

#### Attention

Failure to follow the accompanying directions may lead to minor personal injury or property damage.

[Safety Symbols](#)

[Power](#)

[Installation](#)

[Using and  
Cleaning](#)

### ▣ Power

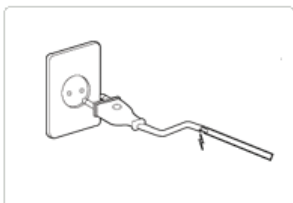
※ The images here are for reference only, and are not applicable in all cases (or countries).

#### Warning



▶ Insert the power plug correctly until it is firmly in place.

- Failing to do so, may cause fire.

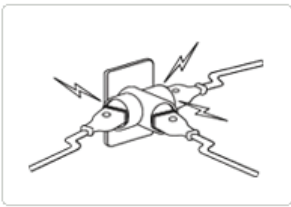


▶ Do not use a damaged power plug, cord or outlet, as this may cause electric shock or fire.



▶ Do not touch the power plug with wet hands, as this may cause electric shock.

▶ Do not connect more than one appliance to a single outlet, as an overheated outlet may cause fire.



- ▶ **Do not use force to pull the power cord. Don't place anything heavy on the power cord, as this may cause electric shock or fire.**



- ▶ **Make sure to turn the power off and disconnect the power plug from the outlet before moving the product. Make sure to disconnect the connection cables from other devices as well.**



- Moving the product without disconnecting the power cord may damage it while moving, and may cause electric shock or fire.

### Attention



- ▶ **Hold and pull out the plug by its body when disconnecting it from the outlet, as pulling the plug out by the cord may cause it to be damaged.**

- Failing to do so, may cause fire, or the product may not turn on normally.



- ▶ **Ensure that the power plug is disconnected before cleaning the product.**

- Failing to do so, may cause electric shock or fire.



- ▶ **Keep the product away from places exposed to oil, smoke or moisture; do not install inside a vehicle.**

- This may cause a malfunction, electric shock or fire.
- In particular, avoid operating the monitor near water or outdoors where it could be exposed to snow or rain.



- ▶ **Do not install the product near any heating appliance.**

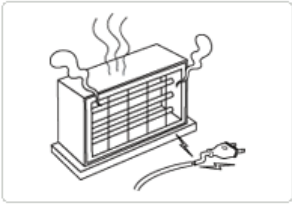
- There is a risk of fire.

### Installation

#### Warning

- ▶ **When installing the product on a cabinet or shelf, do not let the front end of the product project beyond its front edge.**

- Failing to do so, may cause the product to fall, resulting in a product malfunction or personal injury.



▶ Do not place the power cord near a heater, as the power cord may melt, causing electric shock or fire.



▶ Do not install the product in a car or a location exposed to oil, smoke, moisture, water, or rainwater.

- Any contact of these materials with the product may cause electric shock or fire.



▶ Disconnect the power plug when there is thunder or lightning.

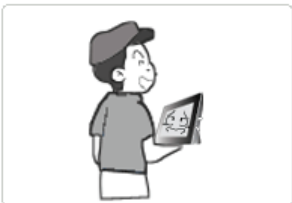
- Failing to do so, may cause electric shock or fire.

### Attention



▶ Place the product down gently when installing it.

- Failing to do so may cause product damage or personal injury.



▶ Avoid dropping the product when moving, as this may cause product damage or personal injury.



▶ Do not install the product in a location easily reached by children.

- As the product may fall and cause personal injury.

### ▶ Using and Cleaning

#### Warning

▶ Do not insert any metal objects such as forks, wire, or gimlets, or flammable items such as paper or matches into the ports at the back of the product, as this may cause electric shock or fire.

- If water or any foreign substance enters the product, make sure to turn the product



off disconnect the power plug from the outlet, and contact a **service center**.



▶ **Never disassemble, repair, or modify the product yourself.**

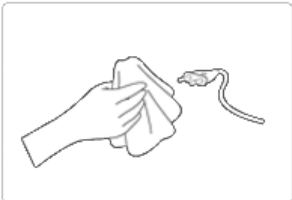
- If you need to repair your product, contact a **service center**. An attempt at repairing this product may cause electric shock or fire.

### **!** Attention



▶ **If you hear a strange sound, smell anything burning, or see smoke, disconnect the power plug immediately and contact a service center.**

- Failing to disconnect the power plug may cause electric shock or fire.



▶ **Always remove dust and water from the pins and connections of the power plug.**

- Failing to do so may cause electric shock or fire.



▶ **When cleaning the product, first disconnect the power plug and clean it with a soft, dry cloth.**

- Do not use any chemicals such as benzene, alcohol, thinners, mosquito repellent, aromatic, lubricant, detergent or wax.



▶ **When not using the product for a long time, make sure to disconnect the power plug.**

- Heavy accumulated dust may cause electric shock or fire.



▶ **If the product needs to be installed in a location that doesn't satisfy general conditions, make sure to contact one of our service engineers about the installation as the product may encounter serious quality problems due to its environment.**

- This refers to locations exposed to conditions such as heavy fine dust, chemicals, high or low temperature, moisture, or when the product needs to be used continually without a break over a long time.



▶ **If the product has been dropped or the product casing is damaged, turn it off and disconnect the power plug.**

- Using the product without verifying that it has not been damaged may cause electric shock or fire. Please contact a **service center**.

### **Correct Disposal of This Product**

**(Waste Electrical & Electronic Equipment) - Europe only**

**(Applicable in the European Union and other European countries with separate collection systems)**



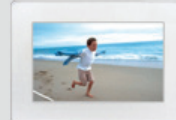
This marking shown on the product or its literature, indicates that it should not be disposed with other household waste at the end of its working life. To prevent possible harm to the environment or damage to health from uncontrolled waste disposal, please separate this from other types of waste and recycle it responsibly to promote the sustainable reuse of material resources.

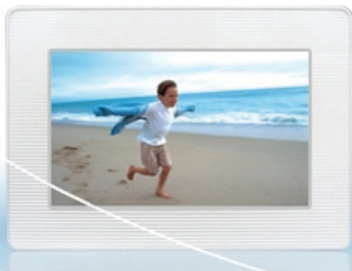
Household users should contact either the retailer where they purchased this product, or their local government office, for details of where and how they can take this item for environmentally safe recycling.

Business users should contact their supplier and check the terms and conditions of the purchase contract. This product should not be mixed with other commercial wastes for disposal.

Using, copying or reproducing the whole or part of this manual without written permission from Samsung Electronics is prohibited. The content of this manual is subject to change without prior notice. ©2007 All rights reserved. Samsung Electronics.

Digital Photo Frame  
**SPF-72V**





Digital Photo Frame **MP3** **JPG** **MPG** **USB**  
**SPF-72V**

[Safety Instructions](#) | [Overview](#) | [Connecting](#) | [Using](#) | [Applications](#) | [Specifications](#) | [Troubleshooting](#)

Overview

- [↑ TOP](#)
- [↑ MAIN](#)
- [↑ ↻](#)

| [Features](#) | [Components](#) | [Front](#) | [Back](#) | [Side \(Buttons\)](#) |

Features

- 01 Expand the memory capacity with a memory card. Enjoy stored images immediately.**
  - By connecting a SD or MMC/MS memory card of your digital camera to your digital photo frame, you can enjoy images quickly and easily. This also provides a way to expand the memory capacity of the frame.
- 02 Stylish design**
  - With its sleek and clean, high class design, your digital photo frame doubles as an ornament for your desk or table.
  - A 90 degree rotating stand allows both horizontal and vertical installation.

| [Features](#) | [Components](#) | [Front](#) | [Back](#) | [Side \(Buttons\)](#) |

Please check that all components are contained in the delivered package.  
If anything is omitted, contact the local distributor where the product was purchased. For optional items, contact a [service center](#).  
Never use a power adapter other than the adapter provided with the product.

Components



Digital Photo Frame  
(Colors may differ for each product.)

[Manual](#)



Quick Start



Warranty  
(Not available in all locations)



User Manual

**Cables**



Power cord



USB cable  
(A-B type)



Power Adapter

- | [Features](#)
- | [Components](#)
- | [Front](#)
- | [Back](#)
- | [Side \(Buttons\)](#)
- |

**Front**




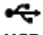
- | [Features](#)
- | [Components](#)
- | [Front](#)
- | [Back](#)
- | [Side \(Buttons\)](#)
- |

**Back**







- 1**  **Kensington lock**

The Kensington lock is a device used to physically secure the system when using it in a public place. (The locking device has to be purchased separately.)  
**For using a locking device, please contact where you purchased it.**
- 2**  **USB connection port**

Connect a PC or an external device using a USB cable.

  - A** Down stream    Connect your digital photo frame to a USB-supporting storage device with a USB cable.
  - B** Up stream        Connect your digital photo frame to a PC's USB port with a USB cable.

✘ Make sure to use the USB cable (A-B type) provided with the product when connecting your digital photo frame to a PC through the upstream port.
- 3**  **Headphone connection jack**

Connect your headphones to the Headphone connection jack.
- 4**  **DC -In Jack**

Connect the power adapter to this jack.  
 Connect the power cord to the power jack of the power adapter.
- 5** **Stand**

A 45, 90 degree rotating stand allows both horizontal and vertical installations. If your digital photo frame is installed vertically, you can rotate your photos using the rotation function to fit to the vertical installation.
- 6** **Memory Card Slot**

Allows you to insert an optional memory card.  
 (Only applicable for SD/MMC/MS card)
- 7** **Sliding Prevention Holder**

Supports the product so that it stays firmly in place on slippery surfaces.
- 8** **Speaker**

You can listen to music files and movies.

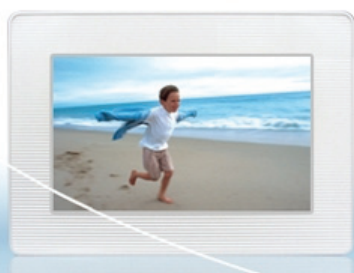


- 1 [ ] Power Button** Turns the product on or off.  
**Power Indicator** Hold down the power button at the right of the product for about 2 seconds. Shows the power status. When the product is powered on, the power light turns on.
- 2 [MENU] Menu Button** Displays the menu window at the bottom left corner of the screen.
- 3 [VOL +] Volume Button** Adjusts the sound volume when playing music files or movies.  
**[^] Up Button** Used for moving up.
- 4 [ < ] Left Button** Used for moving left.
- 5 [ > ] Right Button** Used for moving right.
- 6 [VOL -] Volume Button** Adjusts the sound volume when playing music files or movies.  
**[v] Down Button** Used for moving down.
- 7 [ENTER( )] Enter Button** Used for selection.  
**[ ] Play / Pause Button** Play / Pause during playback.
- 8 [BACK] Back Button** Return to the previous menu.

Using, copying or reproducing the whole or part of this manual without written permission from Samsung Electronics is prohibited. The content of this manual is subject to change without prior notice. ©2007 All rights reserved. Samsung Electronics.

Digital Photo Frame  
**SPF-72V**





Digital Photo Frame **MP3** **JPG** **MPG** **USB**  
**SPF-72V**

[Safety Instructions](#) | [Overview](#) | [Connecting](#) | [Using](#) | [Applications](#) | [Specifications](#) | [Troubleshooting](#)

## Connecting

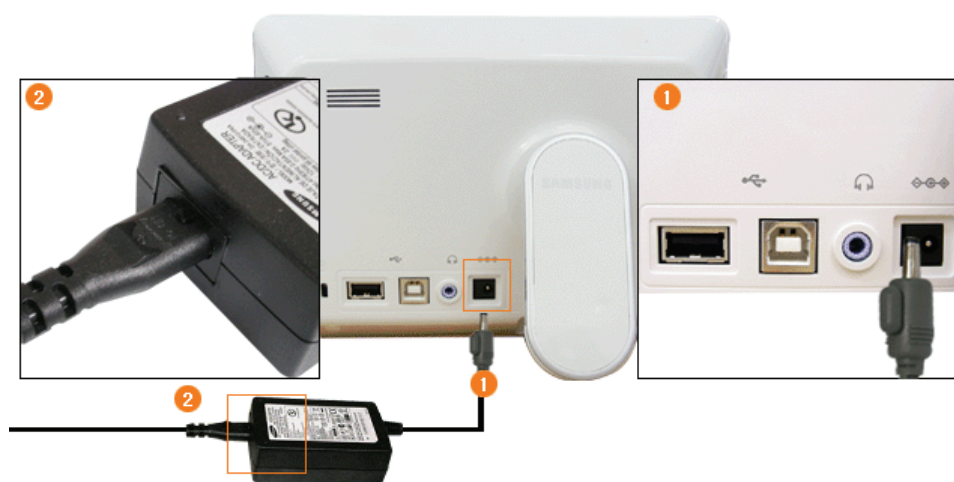
[↑ TOP](#)



[↑ MAIN](#)

[↑ ↻](#)

| [Power](#) | [USB](#) | [Memory Card](#) |

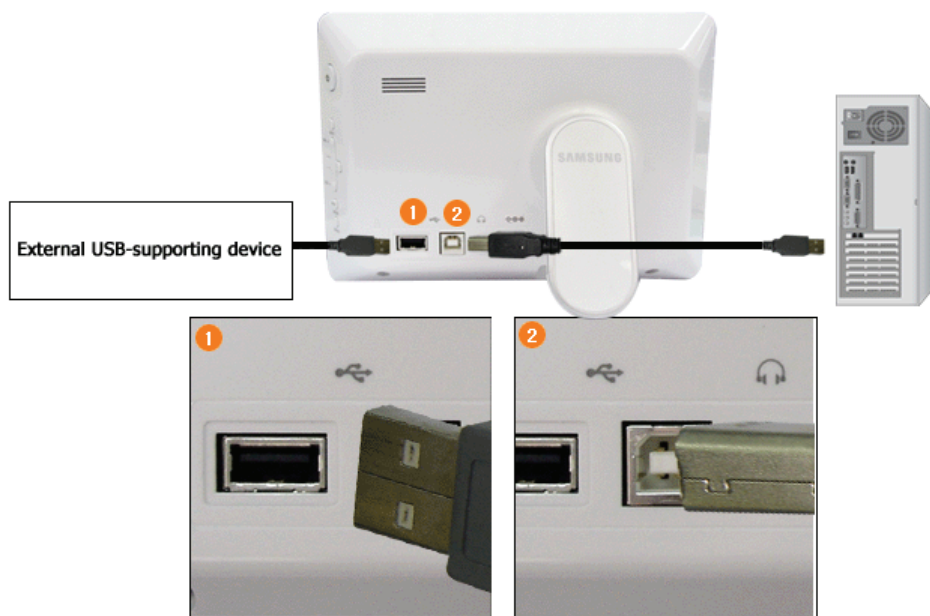
### Connecting the Power



- 1 Connect the power adapter to the  terminal at the back of the product.
- 2 Connect the power cord to the power adapter.
- 3 Plug the power cord for the product into a nearby outlet.
- 4 Press the  button on the side of the product to turn the product on.

| [Power](#) | [USB](#) | [Memory Card](#) |

### Connecting via USB



### 1 Down Stream Port

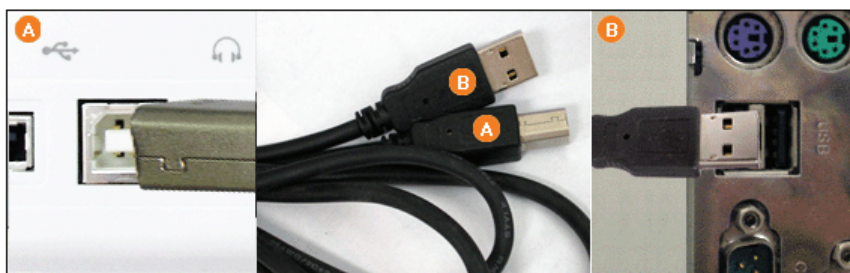
Used to connect an external USB-supporting device to your digital photo frame.

- ✘ This product does not support USB card readers. Only USB storage is supported.
- ✘ The external devices connected to your Digital Photo Frame are not recognized by your PC.
- ✘ When connecting an external device to the down stream port, use the USB cable provided with the external device.
- ✘ Samsung carries no liability for external device malfunctions caused by using any cable except the standard cables specified for each device.
- ✘ Some external products provide a cable that does not meet USB standards. Hence, they may cause a malfunction.
- ✘ If an external storage device does not work normally when connected to your digital photo frame, try to connect it to your PC. If it still does not work normally when connected to your PC, contact a service center for that external device or your PC.

### 2 Up Stream Port

Used to connect your digital photo frame to a PC.

- ✘ When connecting your digital photo frame to a PC through the up stream terminal, make sure to use the USB cable provided with the product.



**A** Connect to the upstream jack of your digital photo frame.

**B** Connect the USB terminal of your PC.

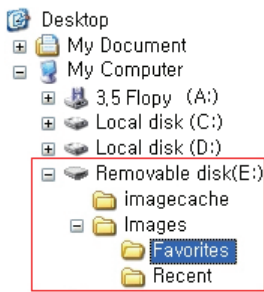
### Folder Structure

When connecting this product to your PC, it is displayed as a removable disk (E:), as shown in the figure below.

You can save and play all music and movie files in the following folders.

You can also add and delete folders as required. (However, if you delete the following default folders, they are automatically created when your product is turned on again.)

- 01 images** A default folder created by the product  
(The full path displayed in the Digital Photo Frame: Photos / frame memory / images)
- 02 Favorites** Mainly stores photos.
- 03 Recent** Temporarily stores the last displayed photo.



**04 imagecache** Stores as many Web Photos (photos from the Windows Live or RSS) to the cache as were used in the images folder. If you copy your photos from your PC to the imagecache, they are invisible and cannot be viewed with your Digital Photo Frame.

- ✘ The capacity of this product is 64 MB.
- ✘ If the capacity is exceeded, no further files can be stored.
- ✘ Do not turn off the product while saving, playing, or deleting a file.
- ✘ The volume name of the removable disk (for example, E:, F:, G:) may differ depending on your computer environment.

| **Power** | **USB** | **Memory Card** |

#### ▶ Connecting a Memory Card

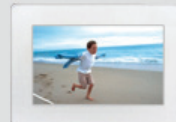


**1 SD/MMC/MS CARD** Slide the card in the direction marked on the top of the card.

- ✘ Removing the memory card while playing MP3s, movies, or photos, may cause the product to operate abnormally. In this case, turn the product off and on.

Using, copying or reproducing the whole or part of this manual without written permission from Samsung Electronics is prohibited. The content of this manual is subject to change without prior notice. ©2007 All rights reserved. Samsung Electronics.

Digital Photo Frame  
**SPF-72V**





Digital Photo Frame MP3 JPG MPG USB  
**SPF-72V**

[Safety Instructions](#) | [Overview](#) | [Connecting](#) | [Using](#) | [Applications](#) | [Specifications](#) | [Troubleshooting](#)

- [↑ TOP](#)
- [↑ MAIN](#)
- [↑ ↻](#)

Using

| [Buttons](#) | [Photos, Web Photos](#) | [Music](#) | [Video](#) | [Settings](#) |

▶ **Buttons**

➤ **Control Buttons**

Button	Description
	Turns the product on or off. Hold down the power button on the side of the product for about 2 seconds.
MENU	Opens the on-screen menu and exits from the menu.
VOL +, VOL -	Push the button to adjust volume.
^, v, <, >	These buttons allow you to adjust items in the menu.
ENTER	Activates a highlighted menu item.
BACK	Use this button to step one step back in the menu.

| [Buttons](#) | [Photos, Web Photos](#) | [Music](#) | [Video](#) | [Settings](#) |

▶ **Photos / Web photos**

➤ **List Menu (Only Photos)**



※ When pressing the MENU button, the on-screen menu is displayed on the screen.

Upper OSD	Sub OSD
	Description
Show Pictures From	<ul style="list-style-type: none"> <li>◆ Memory Card, CF Card, USB, Frame Memory(:default value)</li> </ul> Select a connected storage media. You can only select an external device which is currently connected.

➤ **Thumbnail List Menu**



✘ When pressing the MENU button, the on-screen menu is displayed on the screen.

Upper OSD	Sub OSD	
	Description	
Start Slide Show	Start Slide Show	
Copy	♦ Copy File, Copy All Files	
	You can copy the selected file to other connected storage devices.	
Delete	♦ Yes, No	
	Delete the file. (This is enabled when Photos is selected.)	
Show Related Photos	Allows you to view a list of other photos which have a relationship to the selected image, for example, other photos with a similar date to it.	
	- You can only use images shared by Windows Media Player on your PC while your digital photo frame is connected to it.	
Set as Background	Sets the currently selected image as the Home Background for the main screen.	
	At this time, the Home Background in the Settings menu is automatically set to Custom.	
Background Music	♦ On, Off, Setting	
	Set the Background Music to On by pressing the Menu button. Then set the Background Music to Setting by pressing the Menu button again and selecting the music you want from among the music files saved on the Frame Memory or the connected external memory.	

✘ When copying photos from an external memory storage device (SD/MMC/MS, CF, USB memory) to the internal memory, the size of each photo is automatically reduced to fit the size of the screen. Therefore only use the photos stored on the internal memory with a digital photo frame.

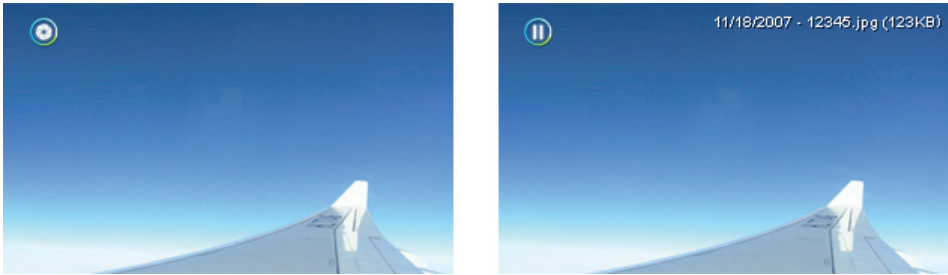
When copying photos to the internal memory, the EXIF information (camera-related information) stored in the photo is removed and this may take a long time if a lot of files are copied at the same time.

## ➤ Slideshow Menu

Upper OSD	Sub OSD	Detail OSD
	Description	
Pause Slide Show/ Resume Slide Show	Pause Slide Show/Resume Slide Show	
	Transition	♦ Fade, Wipe, Slide, Blind, Checker, Random, None
Slide Show Settings	Select an effect for your slide show when transitioning between images.	
	Interval	♦ 5 Seconds, 10 Seconds, 20 Seconds
	Controls the time intervals between image files for a slide show.	
	Repeat	♦ On, Off
Show Related Photos	Select the Repeat for displaying images.	
	Shuffle	♦ On, Off
Brightness	Select whether to playback the files sequentially or in shuffle mode.	
	Allows you to view a list of other photos which have a relationship to the selected image, for example, other photos with a similar date to it.	
Rotate	- You can only use images shared by Windows Media Player on your PC while your digital photo frame is connected to it.	
	♦ 0~100	
Rate Photos	Adjust the brightness from 0 to 100.	
	♦ Original, 90°, 180°, 270°	
You can rotate an image 90°, 180°, or 270°. You can also keep the image as is by selecting Original.		While a slide show is in progress, stars (★) are displayed according to the grade set by Windows Media Player.

	- You can only use images shared by Windows Media Player on your PC while your digital photo frame is connected to it.
Aspect Ratio	<ul style="list-style-type: none"> <li>Original, Auto Fit, Fit To Width, Fit To Screen</li> </ul> Select an aspect ratio for images to display.
Delete	<ul style="list-style-type: none"> <li>Yes, No</li> </ul> This function deletes a picture being used for the current SlideShow. However, this function is not available, if the SlideShow is performed over the network using PC Connection, Web Photo, etc.
Set as Background	Sets the image being displayed in the slide show as the Home Background for the main screen.
Background Music	<ul style="list-style-type: none"> <li>On, Off, Setting</li> </ul> You can specify the background music for your slide shows. Select On and move to Settings. Then select the music you want to play. You can adjust the volume using the $\wedge \vee$ buttons to the right of your digital photo frame.

**Direct Functions (Slide Show)**

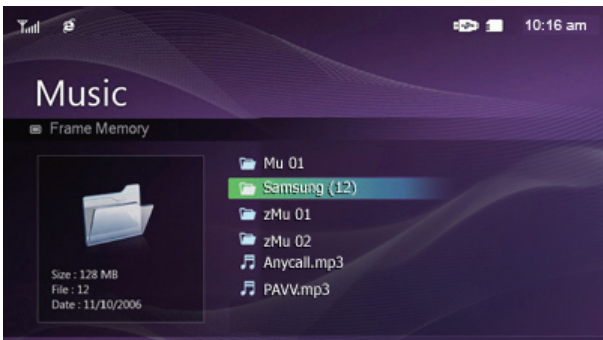


Button	Description
>	Play the next file in the list.
<	Play the previous file in the list.
▶	Pressing the ▶    button alternately plays and pauses the file.
MENU	Opens the on-screen menu and exits from the menu.

- [Buttons](#)
- [Photos, Web Photos](#)
- [Music](#)
- [Video](#)
- [Settings](#)

**Music**

**List Menu**

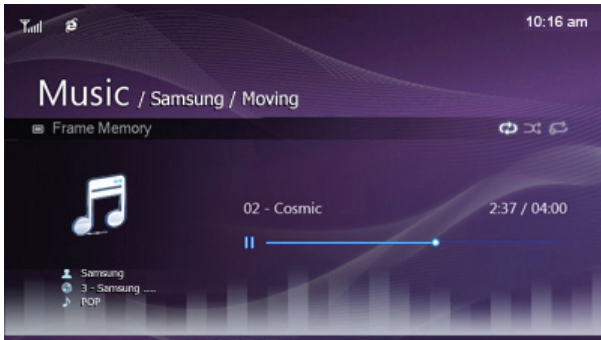


✘ When pressing the MENU button, the on-screen menu is displayed on the screen.

Upper OSD	Sub OSD
	Description
Music Source	<ul style="list-style-type: none"> <li>Memory Card, CF Card, USB, Frame Memory(:default value)</li> </ul> Select a connected media storage device. You can only select an external device which is currently connected.
Playback Mode	<ul style="list-style-type: none"> <li>Once, Repeat, Repeat Once, Shuffle</li> </ul> Select to playback music files either Once, repeatedly or randomly.
Copy	<ul style="list-style-type: none"> <li>Copy File, Copy All Files</li> </ul> You can copy the selected file to other connected storage devices.
Delete	Delete the file.



## ▶ Play Menu



✘ When pressing the MENU button, the on-screen menu is displayed on the screen.

Upper OSD	Sub OSD
	Description
Playback Mode	<ul style="list-style-type: none"> <li>◆ Once, Repeat, Repeat Once, Shuffle</li> </ul>
	Select to playback music files either Once, repeatedly or randomly.
Brightness	<ul style="list-style-type: none"> <li>◆ 0~100</li> </ul>
	Adjust the brightness from 0 to 100.

## ▶ Direct Functions

>	Plays the next file.
<	Plays the previous.
^, v	Adjusts the volume.
▶	Plays and Pauses a file.
MENU	Displays the menu. Exits the menu.

| **Buttons** | **Photos, Web Photos** | **Music** | **Video** | **Settings** |

## ▶ Video

### ▶ List Menu



✘ When pressing the MENU button, the on-screen menu is displayed on the screen.

Upper OSD	Sub OSD
	Description
Video Source	<ul style="list-style-type: none"> <li>◆ Memory Card, CF Card, USB, Frame Memory(:default value)</li> </ul>
	Select a connected media storage device. You can only select an external device which is currently connected.
Playback Mode	<ul style="list-style-type: none"> <li>◆ Once, Continuous</li> </ul>
	You can playback movie files either Once or Continuously.
Copy	<ul style="list-style-type: none"> <li>◆ Copy File, Copy All Files</li> </ul>
	You can copy the selected file to other connected storage devices.
Delete	Delete the file.

## ▶ Play Menu



✘ When pressing the MENU button, the on-screen menu is displayed on the screen.

Upper OSD	Sub OSD
	Description
Playback Mode	<ul style="list-style-type: none"> <li>◆ Once, Continuous</li> </ul>
	Select a mode among Once, Continuous.
Brightness	<ul style="list-style-type: none"> <li>◆ 0~100</li> </ul>
	Adjust the brightness from 0 to 100.

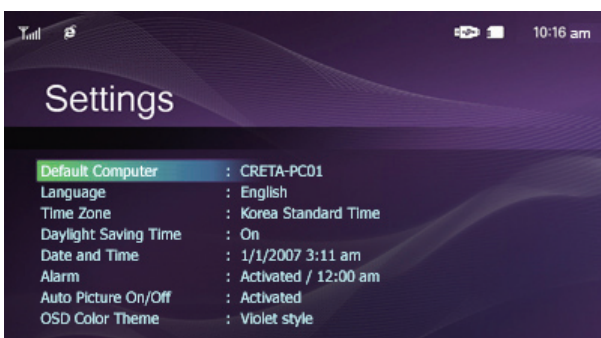
## ▶ Direct Functions

>	Play the next file.
<	Play the previous.
^, v	Adjust volume.
▶	Plays and Pauses a file.
MENU	Displays the menu. Exits the menu.

| **Buttons** | **Photos, Web Photos** | **Music** | **Video** | **Settings** |

## ▶ Settings

### ▶ Set the Settings



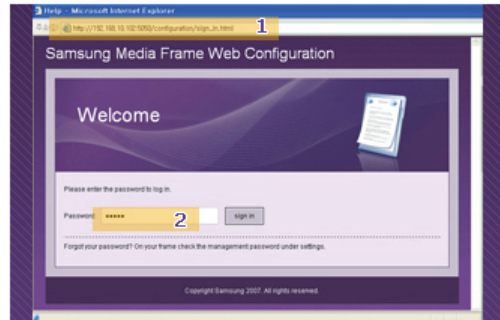
Upper OSD	Sub OSD
	Description
Language	<ul style="list-style-type: none"> <li>◆ English, Deutsch, Español, Français, Italiano, Português, Русский, Türkçe, 简体中文, 繁體中文, 한국어</li> </ul>
	Select a language to use for your product.
Starting Mode	<ul style="list-style-type: none"> <li>◆ Home, Last Mode</li> </ul>
	You can select the menu which is displayed when your Digital Photo Frame starts.
Auto Rotation	<ul style="list-style-type: none"> <li>◆ On, Off</li> </ul>
	<p>On : If you set the frame on its edge, the sensor detects the change and rotates the picture automatically.</p> <p>Off : If you set the frame on its edge during a SlideShow, even if the sensor detects the change, the</p>

	picture does not rotate accordingly.
Default Computer	By using the wireless LAN connection search function, you can reset the current connection and re-select the computer from which you are receiving photos.
Wireless Network (SSID)	Displays a list of available SSIDs when an access point exists in your vicinity.
Proxy Server	Displays the address of the currently configured proxy server. You can change it under the Settings section of the Samsung Photo Frame Web Configuration.
Management Web Address	Displays the webpage address to connect to Samsung Photo Frame Web Configuration.
Management Password	Displays the password required to connect to Samsung Photo Frame Web Configuration. Enables case-sensitive mode.
Proxy Required	<ul style="list-style-type: none"> <li>◆ Yes, No</li> </ul> You can specify whether to use a proxy server.
Date and Time	<ul style="list-style-type: none"> <li>◆ Month, Day, Year, Hour, Minute, am/pm</li> </ul> Enter and set Month, Day, Year, Hour, Minute or am/pm. Whenever the power plug is disconnected, the Date and Time information is lost. Therefore, you need to reset them each time
<b>Time Zone</b>	You can select the Time Zone that you are in. Select a Time Zone.
Daylight Saving Time	<ul style="list-style-type: none"> <li>◆ On, Off</li> </ul> Selects whether to apply DST (Daylight Saving Time) depending on the Time Zone and Summer Time.
Time Format	<ul style="list-style-type: none"> <li>◆ 12 hours, 24 hours</li> </ul> You can select whether to display the time in the 12 or 24 hour mode. In 24 hours, am and pm will not be displayed.
Internet Time Update	<ul style="list-style-type: none"> <li>◆ Auto, Manual, Update Time Now</li> </ul> Select whether to set the time information which is received through the Internet as the system time for your Digital Photo Frame.
Alarm	<ul style="list-style-type: none"> <li>◆ Activation, Hour, Minute, am/pm, Repeat, Sound, Volume</li> </ul> You can set alarms.
Auto Picture On/Off	<ul style="list-style-type: none"> <li>◆ Activation, Hour, Minute, am/pm</li> </ul> Your product will turn on at the specified time automatically. Your product will turn off at the specified time automatically. If the screen was turned off at the Off Time, it turns on again when a key other than the Power key is pressed. <ul style="list-style-type: none"> <li>✘ When your Photo Frame is connected to your PC as a Mass-Storage device using a Mini-Monitor or USB cable, the screen will not be turned off even at the Off Time.</li> </ul>
OSD Color Theme	<ul style="list-style-type: none"> <li>◆ Violet Style, Blue Style, Green Style, Orange Style</li> </ul> You can select a color theme for the OSD background.
Home Background	<ul style="list-style-type: none"> <li>◆ Default, Custom</li> </ul> You can reset the Home Background of the main menu to the default image.
Timeout	<ul style="list-style-type: none"> <li>◆ 1 Minute, 3 Minutes, 5 Minutes</li> </ul> Select the time for the screensaver to start. However, if no button is operated for one minute, the screensaver starts, regardless of the Timeout Settings on the Main menu.
Brightness	<ul style="list-style-type: none"> <li>◆ 0~100</li> </ul> Adjust the brightness from 0 to 100.
Button Sound	<ul style="list-style-type: none"> <li>◆ On, Off</li> </ul> You can turn the sound of the operation buttons on or off.
<b>Firmware Update</b>	Update the product using external memory(CF/SD/MMC/MS,USB). Please visit <a href="http://www.samsung.com">www.samsung.com</a> for the latest firmware update.
Reset Settings	<ul style="list-style-type: none"> <li>◆ Yes, No</li> </ul> Reverts the product Settings to factory defaults.
Product Information	<ul style="list-style-type: none"> <li>◆ Model, Firmware Version, Copyright</li> </ul> View the product information.

Digital Photo Frame



PC



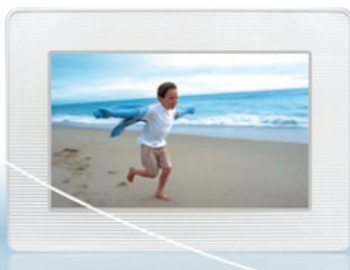
- 01 Go to [Settings]-[Management Web Address] in your Photo Frame and then open this URL using Internet Explorer on your PC.
- 02 When connected, the Welcome page will be displayed. Enter the Password which you can see in the [Settings]-[Management Password] of your Photo Frame in the [Password] box on the Welcome page, and click the [sign in] button.

Upper Menu	Sub Menu
	Description
Welcome	<ul style="list-style-type: none"> <li>◆ Password</li> </ul>
	Enter the password displayed in <b>Management Password</b> . Enables case-sensitive mode.
Photo Frame	<ul style="list-style-type: none"> <li>◆ Now Playing</li> </ul>
	You can monitor the photos which are being displayed in the slide show at the same time.
Web Photos	<ul style="list-style-type: none"> <li>◆ Photo Feeds, Photos Windows Live Spaces</li> </ul>
	You can add or remove a website address from which you can receive photos.
Storage	<ul style="list-style-type: none"> <li>◆ Photo Feeds, Photos Windows Live Spaces</li> </ul>
	You can check the size of the photos in the addresses listed in Web Photos.
Settings	<ul style="list-style-type: none"> <li>◆ Basic, Administrator Password, Date and Time, Network Settings</li> </ul>
	You can enter and change the product name, administrator password, time, and network proxy server, etc.
Help	Displays the help section for using Samsung Photo Frame Web Configuration.

Using, copying or reproducing the whole or part of this manual without written permission from Samsung Electronics is prohibited. The content of this manual is subject to change without prior notice. ©2007 All rights reserved. Samsung Electronics.

Digital Photo Frame  
**SPF-72V**





Digital Photo Frame **MP3** **JPG** **MPG** **USB**  
**SPF-72V**

[Safety Instructions](#) [Overview](#) [Connecting](#) [Using](#) [Applications](#) [Specifications](#) [Troubleshooting](#)

## Applications

↑ TOP

↑ MAIN

↑ ↻

- ▶ **Initial Settings**
- ▶ **Installation Program Guide and User Recommendations**
- ▶ **Settings for Sharing Photos on your PC - Configuring Your Windows**
- ▶ **Settings for Sharing Photos on your PC - Configuring Your Photo Frame**
- ▶ **Viewing the Photos from Windows Live Space**
- ▶ **Viewing the Photos via RSS**
- ▶ **Setting up Rating and Tags (VISTA:Tags, XP:Labels) on a PC**
- ▶ **I want to update firmware.**
- ▶ **I want to connect to a monitor by using Mini-Monitor program. (Windows XP only)**

### ▶ Initial Settings

※ To use the wireless sharing function provided with this product, Windows Vista must be running on your computer and a wireless LAN access point (AP) must be in your vicinity. (For Windows XP users, Windows Media Player 11 is required and must be installed on your PC.)

#### 1. Choose Your Language



Turn on your Digital Photo Frame and select a language. The selected language is used as the OSD language and for the "Samsung Photo Frame Web Configuration" which is embedded in your Digital Photo Frame. You can change the language via Settings -> Language.

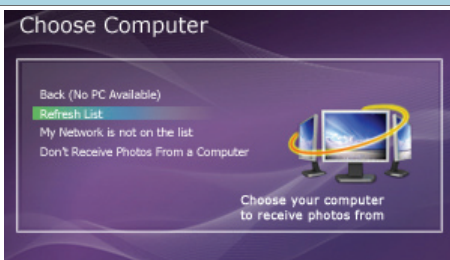
#### 2. Choose Your WiFi Network



A list of APs is displayed. (If there are no APs displayed, click "Refresh Networks" to update the list.)

Select an AP to connect to and the connection state is displayed in a popup window and the "Choose Computer" screen will appear.

#### 3. Choose Computer



A list of PCs is displayed. (If there are no PCs displayed, click "Refresh List" to update the list.) Select a PC to connect to and the Main screen will appear.

※ Ensure that the Settings are configured as shown below.

Otherwise, your PC may not be displayed in the list or you may not be able to connect to it.

※ In Vista, select Control Panel > Network and Sharing Center > Customize. Check whether the Location type is set to Private. Select

## Installation Program Guide and User Recommendations

### 01 Windows XP

- 01 We highly recommend installing **.Net Framework 3.0**.
- 02 Click on the "Frame Manager" icon in the Manual - Main screen to run the installation file.

#### Installing Frame Manager

#### Frame Manager User's Manual

- 03 **Windows Media Player 11** or later must be installed.
- 04 **Digital Image Library Starter Edition (DISE)**  
: This program allows you to change the ratings for the photos on your Digital Photo Frame via your PC.
  - ✗ Recommendations when using the Digital Photo Frame: Internet Explorer 7.0 or higher

### 02 Windows Vista

- 01 Click on the "Frame Manager" icon in the Manual - Main screen to run the installation file.
  - Installing Frame Manager**
  - Frame Manager User's Manual**

## Settings for Sharing the Photos on your PC - Configuring Your Windows Vista

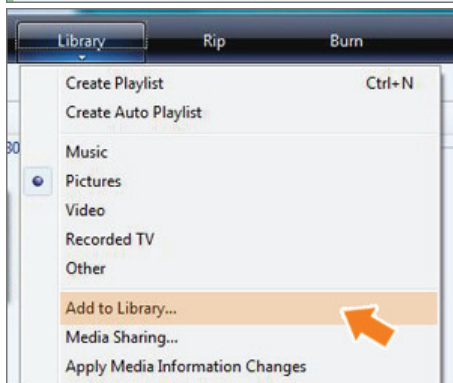
### 01 Adding Photos to the Library



- 01 Run Windows Media Player.

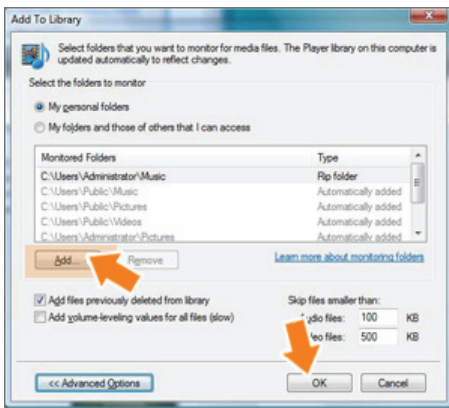


- 02 Click the [Library] tab at the top.

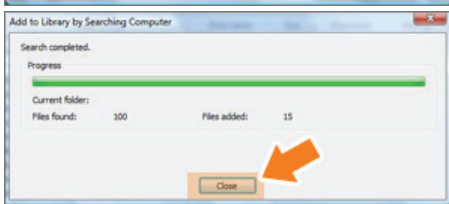
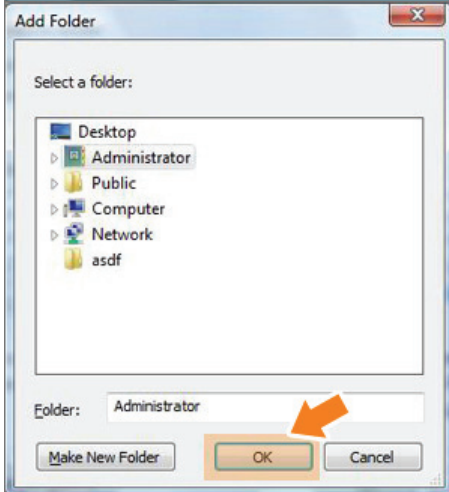


- 03 Click [Add To Library] in the [Library] tab.

- 04 In the [Add To Library] window, select [My personal folders] under the [Select the folders to monitor] section and select the folder containing photos and click [Add].

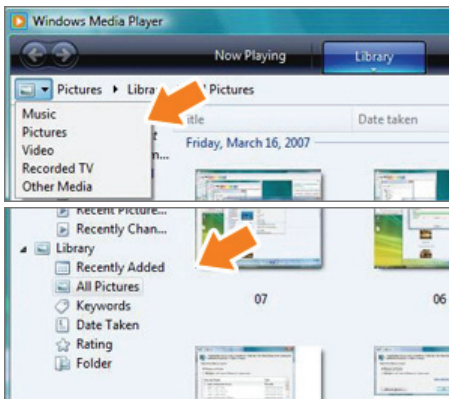


Select the folder to share and click [OK] to add it.



05 When you click [OK], the [Add To Library] window is closed and the [Add to Library by Searching Computer] is displayed. Wait until it finishes the operation and click [Close] when it is completed.

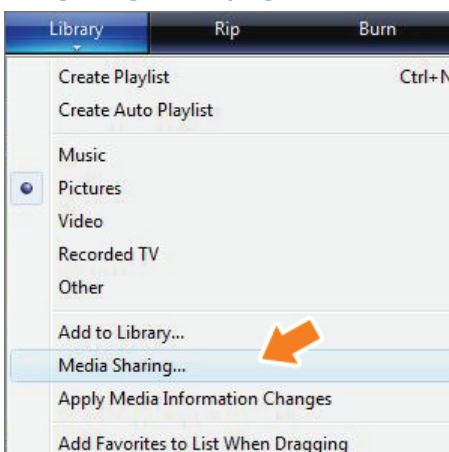
## 02 Checking Shared Photos



01 In the Windows Media Player, set the Category, which is under the [🔄] symbol at the top left, to [Picture].

02 In the [Library], select Recently added, All Pictures, Keywords, Date Taken, Rating, or Folder Settings and check whether the added photos exist in the library.

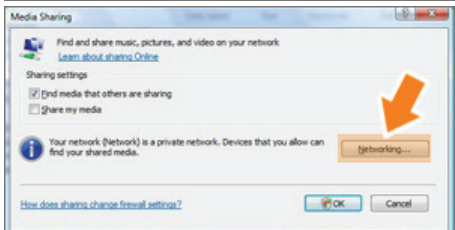
## 03 Sharing Settings for Accepting Connections from Your Photo Frame



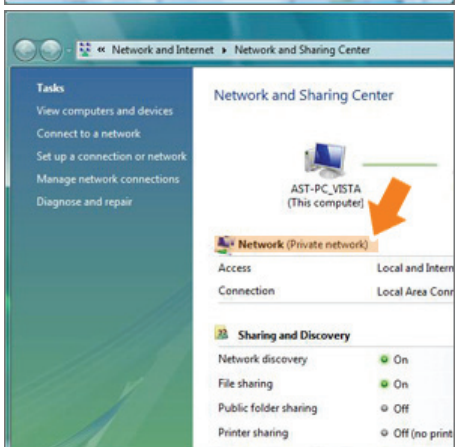
01 In the [Library] tab, click on [Media Sharing].



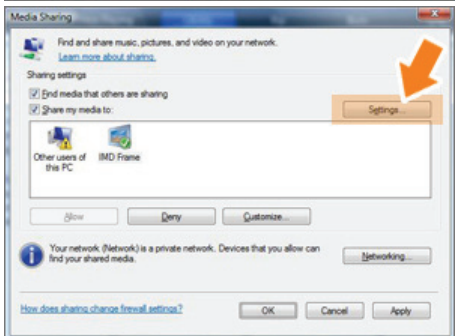
In the [Media Sharing] window, check the [Share my media] checkbox under [Sharing Settings].



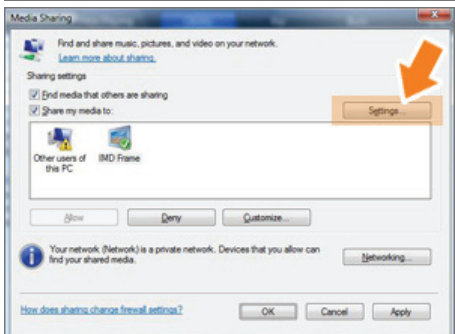
03 If no [Available device] is displayed in the [Media Sharing] window, proceed to steps 4. If displayed, proceed to step 5.



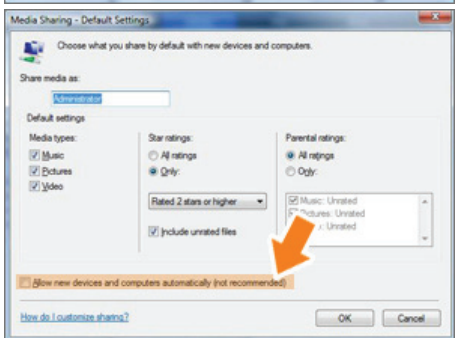
04 In the [Media Sharing] window, click [Networking] and check whether the current network is set to [Private network]. If not, set it to [Private Network].



05 If your network is a Private network, the [Available Device] list and the [Settings] button are displayed in the [Media Sharing] window.



06 In the [Media Sharing] window, click [Settings]. The [Media Sharing-Default Settings] window is displayed.



07 In the [Media Sharing-Default Settings] window, set the [Media Type] to [Picture], both [Star ratings] and [Parental ratings] to [All ratings] or a required rating under the [Default Settings] section. If you want to add a device or computer which tries to connect to the library to the list automatically, check the [Add new devices and computers automatically] checkbox.

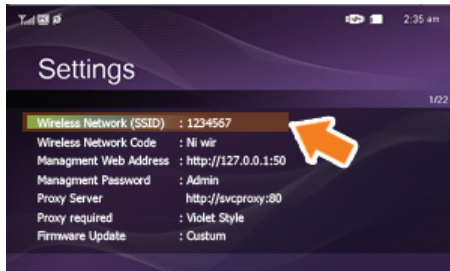


## ▶ Settings for Sharing the Photos on Your PC - Configuring Your Photo Frame

### 01 Checking Network Connections



01 Check whether the Network icon is displayed at the left top of the Main screen.



02 If the Network icon is displayed, proceed to the **Checking Computer Connections** section described below. If it is not displayed, move to [Settings]-[Wireless Network(SSID)].

✘ SSID : Service Set Identifier



03 In the [Wireless Network(SSID)] window, select the SSID to which you want to connect your Digital Photo Frame to. If no available SSID is displayed, click [Refresh Networks] to update the list.

If you select this when the SSID is encrypted, a password input window is displayed. You can only be connected to the network if you enter the correct password.



04 If the "Connected" message is displayed, it means that your Digital Photo Frame is connected to the network.

### 02 Checking Computer Connections



01 Check whether the PC icon is displayed at the top left of the screen.



02 If the PC icon [PC] is displayed, move to the Main screen. If not, move to [Settings]-[Default Computer].

03 In the [Default Computer] window, select the PC you want to connect your Digital Photo Frame to. If a required PC is not displayed, click on [Refresh List] to update the list and select it.



04 If connected, you will be returned to the [Settings] screen. You will find that the PC icon is displayed at the top left of that screen.

### 03 Checking Computer Connections



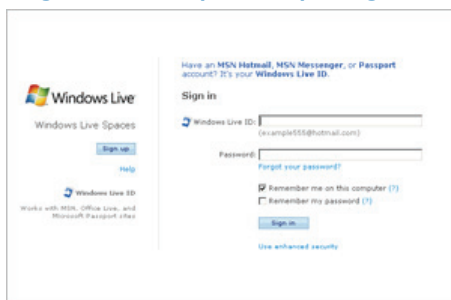
01 In the Main screen, select [Photos].

02 In the [Photos] screen, check whether the ['Account Name's Photos' on 'Computer Name'] is correct. If incorrect, press the [Menu] button and select the PC you want to connect to.

03 You can view the shared photos on the connected computer via Playlists, Tags, Dates, Folders, and Ratings.

## Viewing the Photos from Windows Live Space

### 01 Checking Windows Live Space and Uploading Photos



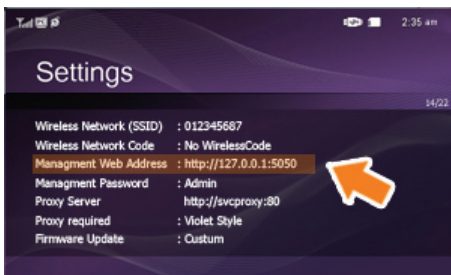
01 If you have no MSN account (MSN Hotmail, MSN Messenger, Passport account), please create one. Go to and login to Windows Live Space (<http://spaces.live.com/>) with your MSN account.

02 If you do not have a space, create a space and enter it.




03 In your space, change to edit mode. Add albums and photos by clicking on Add under the Photos category.

## 02 Setting up the Web Configuration



01 In your Digital Photo Frame, go to [Settings]-[Management Web Address]. Make a note of the web address (URL) displayed in the Management Web Address window. Connect to that address using Internet Explorer on your PC.

Alternatively, if you click the **Frame Manager** icon (  ) in the tray menu at the bottom right of the PC screen, a linked frame list will be displayed. If you select a frame name, the **Samsung Photo Frame Web Configuration** screen for the corresponding frame appears.



02 When connected, the Welcome page will be displayed. On the Welcome page, enter the password displayed in the [Settings]-[Management Password] screen of your Digital Photo Frame in the [Password] box and click [Sign in].

✘ You can change the password (default: Admin) in the Settings of the Samsung Photo Frame Web Configuration.



03 On the Samsung Photo Frame Web Configuration page, click the [Web Photos] tab and add the space address (for example, if it is 'http://test.space.live.com', you have only to type 'test.') to the URL input box for the Photos From Windows Live Spaces list and click [Add].

## 03 Checking your Space Photos on your Digital Photo Frame

01 First check the network connections. (Refer to Viewing the Photos Shared from Vista Windows on your Digital Photo Frame - What You Should Do on Your Digital Photo Frame - Checking Network Connections.)



02 In the Main screen of your Digital Photo Frame, go to [Web Photo]-[Windows Live Space]. A list of the spaces you have added to the Web Configuration will be displayed.



03 Select a space. A list of albums in the selected space will be displayed. Select an album, and thumbnails for the photos in the selected album will be displayed on the right.



## ▣ Viewing the Photos via RSS

### 01 Web Configuration



01 Go to the Web Photos page by following the description in the Settings Web Configuration section for Windows Live Space. Click [Web Photo]-[Photo Feeds] for the RSS Input window. In the RSS Input window, enter the RSS address and click [Add].

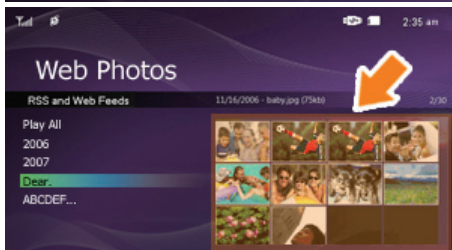
What is an RSS Address?

It is the address that appears in the address box of the web page (XML) displayed when clicking the FEED icon on a RSS service site where photos are uploaded.

### 02 Checking the Photos from RSS on Your Digital Photo Frame



01 In the Main screen of your Digital Photo Frame, go to [Web Photo]-[RSS and Web Feeds]. A list of feeds you have added to the Web Configuration will be displayed.



02 Select a feed from the list. Thumbnails for the photos in the selected feed will be displayed to the right.

## ▣ Setting up Rating and Tags (VISTA:Tags, XP:Labels) on a PC

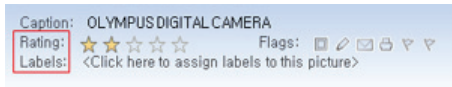
### 01 Windows VISTA



launch the Windows Photo Gallery.

- 02 If you select Info at the top of the Windows Photo Gallery screen, the photo information pane appears on the right.
- 03 Select a photo and change the **Rating** or **Tags** in the right information pane.

## 02 Windows XP



- 01 Click **Start - All Programs - Microsoft Digital Image Starter Edition 2006 - Microsoft Digital Image Starter Edition 2006 Library**.
- 02 The **Microsoft Digital Image Starter Edition 2006 Library** window appears.
- 03 Select a photo and configure the **Rating** and **Labels** for the selected photo at the bottom of the screen.

## I want to update firmware.

### 01 Preparations

- 01 Digital Photo Frame
- 02 Firmware update file.
- 03 USB memory card or external memory devices(CF,SD/MMC/MS)
- ✗ Please visit [www.samsung.com](http://www.samsung.com) for the latest firmware update.

### 02 Connect USB memory card to PC

- 01 If you are ready, connect the USB memory card to your PC.
- 02 Copy the firmware update file you downloaded to the USB memory card.
- ✗ (Make sure to copy the firmware update file to the root directory.)

### 03 Connect USB Memory Card to Digital Photo Frame

- 01 Remove the USB memory card from your PC, and connect it to your Digital Photo Frame.
- ✗ If your Digital Photo Frame is off, turn it on.

### 04 Select Update

- 01 Select **Firmware Update** of **Settings**.

### 05 Updating

- 01 The update progression is displayed on the screen.
- 02 After boot-up, turn your Digital Photo Frame off, remove the USB memory card, and turn your Digital Photo Frame on again, for maximum safety.
- ✗ Do not remove the USB memory card during the update operation.
- Do not press any key during the update operation.
- Do not insert any other card during the update operation.
- Do not turn your Digital Photo Frame off during the update operation.
- You can identify whether the update operation has finished successfully or not by checking the firmware version of your Digital Photo Frame is changed to the version of the firmware update.

## I want to connect to a monitor by using Mini-Monitor program.(Windows XP only)

The Digital Photo Frame not only allows you to appreciate photos but also provides an additional Mini-Monitor function. The Mini-Monitor is a function for using the Digital Photo Frame as an auxiliary monitor. Its usage is simple as the Digital Photo Frame connects to your PC via a USB cable. This function allows you to work more efficiently at your PC by using an additional monitor. To use your digital photo frame as a Mini-Monitor, first install the Frame Manager program. (However, please note that you can use only one digital photo frame as a Mini-Monitor.)

### Installing Frame Manager

#### Frame Manager User's Manual

- Using your digital photo frame as a Mini-Monitor.
- Using your digital photo frame as Mass-Storage.
- Changing the current mode to another mode
- Adjusting the brightness
- Updating the firmware

### ✘ System Requirements

- **OS** : Windows XP SP2
- System Processor Speed : 1.5 GHz
- **USB** : Extended Host Controller (EHCT) for USB 2.0
- **RAM** : 256 MB or above

### ✘ Caution

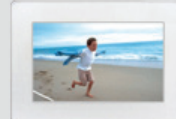
1. Windows XP Service Pack 2 must be installed.  
It might not operate with any operating systems other than Windows XP SP2. We are not liable for problems that may occur when installing it on an operating system other than Windows XP SP2.
2. We recommend a CPU speed of 2.4 GHz or higher.  
Your digital photo frame might not operate normally if the performance specifications of your PC are lower than the recommendations.
3. Make sure to install it correctly as directed in the Installation Guide.
4. Do not use your Mini-Monitor as a primary monitor.  
We are not liable for any problems that may occur if you do not follow the directions. If it is used as a primary monitor, the screen may be blank.
5. Make sure to use the provided USB cable.
6. When using your digital photo frame as a Mini-Monitor, all buttons except for the Power button will not operate.
7. Move the programs displayed and used on the Mini-Monitor to the primary monitor after you have finished using it.
8. With some video cards, Mini-Monitor may not operate normally. In this case, set Hardware acceleration to Full.
  - ✘ To set Hardware acceleration to Full: Right-click on the Windows Desktop and select Properties from the displayed menu. The Display Properties window appears. Click the Settings > Advanced > Troubleshoot tab. Move the Hardware acceleration slide to Full.

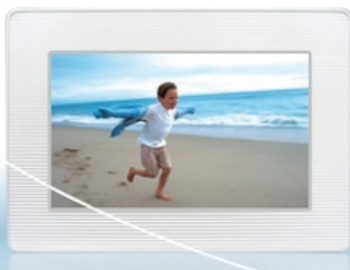
### ✘ Limitation and Recommendation

- **Limitation** : Hardware graphics acceleration such as DirectX or OpenGL is not supported on the Mini-MonitorDisplay as it would require the emulation of a graphics processor by your standard CPU which would not be favourable. Media players which are using DirectX will not work properly on Mini-Monitor Display.  
> Example: GOM player,VLC Player
- **Recommendation** : Do not use/run directX or openGL application on Mini-Monitor display.

Using, copying or reproducing the whole or part of this manual without written permission from Samsung Electronics is prohibited. The content of this manual is subject to change without prior notice. ©2007 All rights reserved. Samsung Electronics.

Digital Photo Frame  
**SPF-72V**





# Digital Photo Frame

MP3 JPG MPG USB

# SPF-72V

[Safety Instructions](#) | [Overview](#) | [Connecting](#) | [Using](#) | [Applications](#) | [Specifications](#) | [Troubleshooting](#)

## Specifications

| [Specifications](#) | [Supported Files](#) |

### Specifications

Items	Specifications	
Panel	Type	7" (17 cm) TFT
	Resolution	800 x 480
	Interface	Digital 6 bit
Supported Formats	JPEG, MPEG4, WMV9 * JPEG max Image Resolution 3200x2400(8Mb) (Progressive JPEG is not supported.)	
Built-in Memory	64Mb	
Network	Wi-Fi 802.11b/g 2.4GHz 54Mbps	
Audio	1 W x 1 built-in speaker	
USB	USB 2.0 (One up stream (host) and one down stream (slave). External Memory Reader is not supported)	
Media (Memory Card)	3 in 1(SD≤4Gb / MMC≤4Gb / MS≤32Gb) ✗ SDHC (High-Capacity) cards are not supported.	
Power	Rating	External Power Adapter (12V, 2A, 24W)
	Consumption	Max mode : 12W, Normal mode: 10W, Off mode(Power Switch Off) : under 1W
Content Files	Photo File	Slide Show/Interval/Effect Image Rotate(auto.manual)/ Thumbnail View/Windows Vista WMC support
	Music File	MP3
	Movie File	MPG, MPEG4, WMV9
Networking	Networking	Wi-Fi, DHCP from AP, Image from RSS feed
	Information	Memory Information, file information, status information
Control	I/O Device	Key (8 keys)
	Memory Card	Auto detection and GUI for selection

↑ TOP

↑ MAIN

↑ ↻



# Digital Photo Frame MP3 JPG MPG USB

## SPF-72V

[Safety Instructions](#) | [Overview](#) | [Connecting](#) | [Using](#) | [Applications](#) | [Specifications](#) | [Troubleshooting](#)

[↑ TOP](#)

[↶ MAIN](#)

[↑ ↻](#)

## ☰ Troubleshooting

[| Troubleshooting](#) | [Terminology](#) | [Service Centers](#) | [Declaration of Conformity](#) |

### ▣ Troubleshooting

This section lists various problems and solutions encountered by users while using the digital photo frame. When encountering a problem, first check the list below and follow the suggested action if one matches your problem. If the problem still persists, contact or visit the nearest [service center](#).

Symptoms	Possible Causes and Suggested Actions
My Digital Photo Frame does not turn on.	<ul style="list-style-type: none"> <li>◆ Check the power connection between the product and the power adapter.</li> <li>◆ Check whether the Samsung logo is displayed in full screen mode when pressing the power button.</li> </ul>
The power turns on but the screen is blank.	<ul style="list-style-type: none"> <li>◆ Check the memory card type. If this is not inserted correctly or is not of a supported type, the photo may not display on the screen. (This product supports USB memory and CF/SD/MMC/MS cards only.)</li> <li>◆ Check the file extensions if the card and other connections are correct. (This product supports the JPEG image format, MPG1, MPEG4 and WMV9 movie formats, and MP3 music file format only. See Specifications.)</li> </ul>
It takes some time to display an image after the digital photo frame turns on.	<ul style="list-style-type: none"> <li>◆ Loading a file from an external memory card may take several seconds. (This depends on the file format and size.)</li> </ul>
No screen is displayed and just sound is heard for MPEG4 and WMV9 movies.	<ul style="list-style-type: none"> <li>◆ Loading a large sized file may take quite a long time. (This is a matter of specifications.)</li> </ul>
The aspect ratio of the screen looks abnormal.	<ul style="list-style-type: none"> <li>◆ Select one of the three values in the Menu&gt;Photo Aspect&gt;Original, Auto Fit, Fit To Width, Fit To Screen menu using the buttons on the right side of the product. (See <a href="#">Menu&gt;Photo Aspect&gt;Original, Auto Fit, Fit To Width, Fit To Screen</a>)</li> </ul>
The screen color is dimmed or too strong.	<ul style="list-style-type: none"> <li>◆ Adjust the brightness in the Settings&gt;Brightness menu using the buttons on the right side of the product. (See <a href="#">Settings&gt;Brightness</a>)</li> </ul>
I have connected an external device (USB memory device or MP3 player), but it does not work.	<ul style="list-style-type: none"> <li>◆ Check the cable connection between the product and the external device.</li> <li>◆ Check whether the external device works as a standalone, and check the format of the files stored on it.</li> <li>◆ Only USB devices supporting Windows CE 5.0 can be supported. Please check that your USB device supports Windows CE 5.0.</li> </ul>
The screen is displayed but there is no sound for MPEG4 and WMV9 movies.	<ul style="list-style-type: none"> <li>◆ Try to check the original movie contents file on your PC.</li> <li>◆ If there is no noticeable error in the settings, it may take some time to switch to the next file depending on the file size and format.</li> </ul>



The screen is displayed but there is no sound for MPEG4 and WMV9 movies.	<ul style="list-style-type: none"> <li>♦ Try to change the Volume menu using the buttons on the right side of the product.</li> </ul>
The movie freezes at some points.	<ul style="list-style-type: none"> <li>♦ Freezing may happen depending on the status of the movie file.</li> <li>♦ Breakings could happen during playback depending on the type and size of movie file.(High bps contents) <ul style="list-style-type: none"> <li>♦ Movie file formats : MPEG 4, WMV9</li> <li>♦ Resolution : Less than 1024 x 768</li> </ul> </li> </ul>
Whenever I turn my Digital Photo Frame off and on, I find the time goes wrong.	<ul style="list-style-type: none"> <li>♦ This product has no built-in battery. When the power turns off, the time info also goes off. Therefore, you need to set time again whenever your Digital Photo Frame turns on. However, if you are connected to the Internet and Settings &gt; Internet time update is set to Auto, the time is updated automatically. (Settings&gt;Internet Time Update)</li> </ul>
A menu is not displayed immediately when I press the menu button.	<ul style="list-style-type: none"> <li>♦ Displaying the menu and other operations may take some time while the product is loading an image to display on the screen.</li> </ul>
My Digital Photo Frame does not retrieve photos from the Internet.	<ul style="list-style-type: none"> <li>♦ Check whether the AP connected to your Digital Photo Frame is accessible to the Internet.</li> </ul>
Cannot display web photos during online services.	<ul style="list-style-type: none"> <li>♦ The maximum file size from the Internet is 4.2 MB. (The maximum local file size is 8.5 MB.)</li> <li>♦ Receiving photos over the internet The Web and Feed file format is JPEG only (over 400X240 pixels)</li> </ul>
Cannot change the image ratings in the Windows Media Center in real time.	<ul style="list-style-type: none"> <li>♦ It is possible to do so by closing and opening Windows Media Player again.</li> </ul>
Cannot change the ratings for the photos on my PC from my Digital Photo Frame.	<ul style="list-style-type: none"> <li>♦ Frame Manager must be running first.</li> <li>♦ After making changes, close and open Windows Media Player again</li> </ul>
I changed the frame name but it hasn't been applied.	<ul style="list-style-type: none"> <li>♦ Select and remove the shared Digital Photo Frame from the Library/Media Sharing list in the Windows Media Player and turn both your Digital Photo Frame and PC off and on. Make sure to turn on your Digital Photo Frame after your PC has booted up.</li> </ul>
I cannot connect my Digital Photo Frame to the Windows Media Player on my PC.	<ul style="list-style-type: none"> <li>♦ Check whether both your Digital Photo Frame and PC are connected to the same access point (AP).</li> <li>♦ In Vista, select Control Panel &gt; Network and Sharing Center &gt; Customize. Check whether the Location type is set to Private. (For more information, refer to <a href="#">Applications &gt; Settings for Sharing Photos on your PC</a> from Your Photo Frame.)</li> <li>♦ Select Digital Photo Frame from the Windows Media Player &gt; Library &gt; Media Sharing list. Check whether it is set to Allow.</li> </ul>
The Frame Manager icon isn't displayed.	<ul style="list-style-type: none"> <li>♦ Check whether a Digital Photo Frame is connected. If no Digital Photo Frame is connected, the icon is not displayed.</li> </ul>
File or folder names are not displayed correctly.	<ul style="list-style-type: none"> <li>♦ When a file or folder name includes letters and numbers other than English, it may be displayed as '**'. If you need a file or folder name to be displayed correctly, and not as '**', change it to English letters and numbers only.</li> </ul>

## Terminology

Terms	Description
MPEG4 (Motion Picture Expert Group4)	<ul style="list-style-type: none"> <li>♦ MPEG4 is a movie compression technology for video communications which enables implementing bi-directional multimedia. It was developed to make it possible to transmit movies over low speed lines on the Internet or for mobile communications. It is used widely on PCs, TVs and cell phones. A movie file</li> </ul>

formatted in the MPEG4 format is called an MPG or MPEG file.

WMV9 (Window Media Video9)	<ul style="list-style-type: none"><li>♦ A video codec in the MPEG4 format developed by Microsoft</li></ul>
MP3 (MPEG Audio Layer-3)	<ul style="list-style-type: none"><li>♦ MP3 is a high quality audio compression technology. It provides a 50 times higher compression than CD. Because it provides high quality and a low size for its compression ratio, it is commonly used on the Internet and for FM radio transmissions, etc. An audio file formatted in the MP3 format is called an MP3 file.</li></ul>
JPEG (Joint Photographic Coding Expert Group)	<ul style="list-style-type: none"><li>♦ JPEG is an image compression technology. It provides the smallest loss of all image compression technologies. It is used widely to transmit multimedia files on the Internet and for other uses. An image file formatted in the JPEG format is called a JPEG or JPG file. Usually, a JPEG file is created by taking a picture with a digital camera, by drawing on a computer, or by a graphic package and then by compressing the graphics image into the JPEG format.</li></ul>
CF Card (CompactFlash Card)	<ul style="list-style-type: none"><li>♦ A CF card provides a higher capacity than other types of memory card. Because the controller is embedded in the memory, it provides high compatibility. It is widely used in various digital products such as PDAs, digital cameras, MP3 players, cell phones, and notebook PCs.</li></ul>
SD Card (Secure Digital Card)	<ul style="list-style-type: none"><li>♦ An SD card is a Flash memory card the size of a postage stamp. It provides high stability and high capacity. It is widely used in various digital products such as PDAs, digital cameras, MP3 players, cell phones, and notebook PCs. Its appearance is similar to that of MMC, but the number of pins and their thickness is different. It also has a password setting function for data security.</li></ul>
MMC (Multi Media Card)	<ul style="list-style-type: none"><li>♦ MMC is external Flash memory used for small mobile devices, as in the case of the SD card. Because it has smaller footprints than SD/MMC cards, it has become widely accepted as the standard for memory cards. It is usually used to save movies and photos.</li></ul>
USB Cable 1) A-mini B type	<ul style="list-style-type: none"><li>♦ Use the up stream terminal when connecting to a PC. This product supports USB 2.0. An A-mini B type cable which is used to connect your digital photo frame to a PC is provided with the product. The A type is the USB connector used to connect to a PC. The B type is the USB connector used to connect to an external device. You can connect your digital photo frame to a PC using an A-mini B type USB cable.</li></ul>
USB Cable 2) Cable for Connecting Other Devices	<ul style="list-style-type: none"><li>♦ Use this type of cable when using the down stream terminal. This product supports USB 2.0. When connecting an external device to the down stream terminal, use the USB cable provided with the external device.</li></ul>
AP (Access Point)	<ul style="list-style-type: none"><li>♦ When using a cell phone, you will hear frequently about a "repeater." In a wireless LAN, AP plays the same role as a repeater. That is, it is an intermediate equipment through which wireless LAN cards receive signals. As a cell phone makes a call through a repeater, a wireless LAN card sends and receives data through an AP.</li></ul>
SSID (Universal Plug & Play)	<ul style="list-style-type: none"><li>♦ SSID is a 32-bit unique identifier which is attached to each header of every packet being transmitted on a wireless LAN. It is used as a password when a wireless device connects to a Basic Service Set (BBS). Because SSID allows differentiating a wireless LAN from other wireless LANS, all APs and wireless devices that want to access to a wireless LAN must use the same SSID. If a device does not know the unique SSID of a certain BBS, it cannot connect to that BBS.</li></ul>

## Service Centers

If you need a product service, contact or visit a Samsung [service center](#).  
For services for network connection and the Server.

Samsung Electronics web site

<http://www.samsung.com>

If you have any questions or comments relating to Samsung products, please contact the SAMSUNG customer care center.

## North America

U.S.A	1-800-SAMSUNG (7267864)	<a href="http://www.samsung.com/us">http://www.samsung.com/us</a>
CANADA	1-800-SAMSUNG (7267864)	<a href="http://www.samsung.com/ca">http://www.samsung.com/ca</a>
MEXICO	01-800-SAMSUNG (7267864)	<a href="http://www.samsung.com/mx">http://www.samsung.com/mx</a>

## Latin America

ARGENTINE	0800-333-3733	<a href="http://www.samsung.com/ar">http://www.samsung.com/ar</a>
BRAZIL	0800-124-421 4004-0000	<a href="http://www.samsung.com">http://www.samsung.com</a>
CHILE	800-SAMSUNG(726-7864)	<a href="http://www.samsung.com/cl">http://www.samsung.com/cl</a>
COLOMBIA	01-8000112112	<a href="http://www.samsung.com/co">http://www.samsung.com/co</a>
COSTA RICA	0-800-507-7267	<a href="http://www.samsung.com/latin">http://www.samsung.com/latin</a>
ECUADOR	1-800-10-7267	<a href="http://www.samsung.com/latin">http://www.samsung.com/latin</a>
EL SALVADOR	800-6225	<a href="http://www.samsung.com/latin">http://www.samsung.com/latin</a>
GUATEMALA	1-800-299-0013	<a href="http://www.samsung.com/latin">http://www.samsung.com/latin</a>
HONDURAS	800-7919267	<a href="http://www.samsung.com/latin">http://www.samsung.com/latin</a>
JAMAICA	1-800-234-7267	<a href="http://www.samsung.com/latin">http://www.samsung.com/latin</a>
NICARAGUA	00-1800-5077267	<a href="http://www.samsung.com/latin">http://www.samsung.com/latin</a>
PANAMA	800-7267	<a href="http://www.samsung.com/latin">http://www.samsung.com/latin</a>
PUERTO RICO	1-800-682-3180	<a href="http://www.samsung.com/latin">http://www.samsung.com/latin</a>
REP. DOMINICA	1-800-751-2676	<a href="http://www.samsung.com/latin">http://www.samsung.com/latin</a>
TRINIDAD & TOBAGO	1-800-SAMSUNG(726-7864)	<a href="http://www.samsung.com/latin">http://www.samsung.com/latin</a>
VENEZUELA	0-800-100-5303	<a href="http://www.samsung.com/latin">http://www.samsung.com/latin</a>

## Europe

AUSTRIA	0800-SAMSUNG(726-7864)	<a href="http://www.samsung.com/at">http://www.samsung.com/at</a>
BELGIUM	02 201 2418	<a href="http://www.samsung.com/be">http://www.samsung.com/be</a>
CZECH REPUBLIC	800-726-786 (800 - SAMSUNG)	<a href="http://www.samsung.com/cz">http://www.samsung.com/cz</a>
	Distributor pro Českou republiku: Samsung Zrt., česká organizační složka, Oasis Florenc, Sokolovská394/17, 180 00, Praha 8	
DENMARK	70 70 19 70	<a href="http://www.samsung.com/dk">http://www.samsung.com/dk</a>
EIRE	0818 717 100	<a href="http://www.samsung.com/ie">http://www.samsung.com/ie</a>

FINLAND	030-6227 515	<a href="http://www.samsung.com/fi">http://www.samsung.com/fi</a>
FRANCE	3260 SAMSUNG (€ 0,15/Min) 08 25 08 65 65 (€ 0,15/Min)	<a href="http://www.samsung.com/fr">http://www.samsung.com/fr</a>
GERMANY	01805 -SAMSUNG(726-7864) (€ 0,14/Min)	<a href="http://www.samsung.de">http://www.samsung.de</a>
HUNGARY	06-80-SAMSUNG(726-7864)	<a href="http://www.samsung.com/hu">http://www.samsung.com/hu</a>
ITALIA	800-SAMSUNG(726-7864)	<a href="http://www.samsung.com/it">http://www.samsung.com/it</a>
LUXEMBURG	02 261 03 710	<a href="http://www.samsung.com/lu">http://www.samsung.com/lu</a>
NETHERLANDS	0900-SAMSUNG (726-7864 € 0,10/Min)	<a href="http://www.samsung.com/nl">http://www.samsung.com/nl</a>
NORWAY	815-56 480	<a href="http://www.samsung.com/no">http://www.samsung.com/no</a>
POLAND	0 801 801 881 022-607-93-33	<a href="http://www.samsung.com/pl">http://www.samsung.com/pl</a>
PORTUGAL	80820-SAMSUNG(726-7864)	<a href="http://www.samsung.com/pt">http://www.samsung.com/pt</a>
SLOVAKIA	0800-SAMSUNG (7267864)	<a href="http://www.samsung.com/sk">http://www.samsung.com/sk</a>
SPAIN	902-1-SAMSU(72678)	<a href="http://www.samsung.com/es">http://www.samsung.com/es</a>
SWEDEN	0771-400 200	<a href="http://www.samsung.com/se">http://www.samsung.com/se</a>
SWITZERLAND	0800-SAMSUNG(726-7864)	<a href="http://www.samsung.com/ch">http://www.samsung.com/ch</a>
U.K	0845 SAMSUNG (7267864)	<a href="http://www.samsung.com/uk">http://www.samsung.com/uk</a>

CIS		
ESTONIA	800-7267	<a href="http://www.samsung.ee">http://www.samsung.ee</a>
LATVIA	8000-7267	<a href="http://www.samsung.com/lv">http://www.samsung.com/lv</a>
LITHUANIA	8-800-77777	<a href="http://www.samsung.lt">http://www.samsung.lt</a>
KAZAKHSTAN	8-10-800-500-55-500	<a href="http://www.samsung.kz">http://www.samsung.kz</a>
KYRGYZSTAN	00-800-500-55-500	
RUSSIA	8-800-555-55-55	<a href="http://www.samsung.ru">http://www.samsung.ru</a>
TADJIKISTAN	8-10-800-500-55-500	
UKRAINE	8-800-502-0000	<a href="http://www.samsung.ua">http://www.samsung.ua</a>
UZBEKISTAN	8-10-800-500-55-500	<a href="http://www.samsung.com/kz_ru">http://www.samsung.com/kz_ru</a>

Asia Pacific		
AUSTRALIA	1300 362 603	<a href="http://www.samsung.com/au">http://www.samsung.com/au</a>
CHINA	800-810-5858	<a href="http://www.samsung.com/cn">http://www.samsung.com/cn</a>
	400-810-5858	
	010-6475 1880	
INDIA	HONG KONG : 3698-4698	<a href="http://www.samsung.com/hk">http://www.samsung.com/hk</a>
	3030 8282	<a href="http://www.samsung.com/in">http://www.samsung.com/in</a>
	1800 110011 1-800-3000-8282	
INDONESIA	0800-112-8888	<a href="http://www.samsung.com/id">http://www.samsung.com/id</a>
JAPAN	0120-327-527	<a href="http://www.samsung.com/jp">http://www.samsung.com/jp</a>
MALAYSIA	1800-88-9999	<a href="http://www.samsung.com/my">http://www.samsung.com/my</a>

NEW ZEALAND	0800 SAMSUNG (0800 726 786)	<a href="http://www.samsung.com/nz">http://www.samsung.com/nz</a>
PHILIPPINES	1800-10-SAMSUNG(726-7864)	<a href="http://www.samsung.com/ph">http://www.samsung.com/ph</a>
SINGAPORE	1800-SAMSUNG(726-7864)	<a href="http://www.samsung.com/sg">http://www.samsung.com/sg</a>
THAILAND	1800-29-3232 02-689-3232	<a href="http://www.samsung.com/th">http://www.samsung.com/th</a>
TAIWAN	0800-329-999	<a href="http://www.samsung.com/tw">http://www.samsung.com/tw</a>
VIETNAM	1 800 588 889	<a href="http://www.samsung.com/vn">http://www.samsung.com/vn</a>

Middle East & Africa		
SOUTH AFRICA	0860-SAMSUNG(726-7864)	<a href="http://www.samsung.com/za">http://www.samsung.com/za</a>
TURKEY	444 77 11	<a href="http://www.samsung.com/tr">http://www.samsung.com/tr</a>
U.A.E	800-SAMSUNG (726-7864) 8000-4726	<a href="http://www.samsung.com/ae">http://www.samsung.com/ae</a>

Using, copying or reproducing the whole or part of this manual without written permission from Samsung Electronics is prohibited. The content of this manual is subject to change without prior notice. ©2007 All rights reserved. Samsung Electronics.

Digital Photo Frame  
**SPF-72V**



File Management      Image copy. delete

General	Dimensions (WxHxD)	209.4 x 149.4 x 87.4 mm / 8.24 x 5.88 x 3.44 inch
	Weight	600 g / 1.3 lb

✘ **The product design may differ according to the model, and specifications are subject to change without prior notice for product performance enhancement.**



**Class B Equipment (Information Communication equipment for residential use)**

**This product complies with the Electromagnetic Compatibility Directives for residential Use and can be used in all areas including common residential areas. (Class B equipment radiates less electromagnetic influences than class A equipment.)**

| [Specifications](#) |

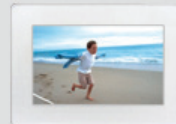
| [Supported Files](#) |

**Supported Files**

- ♦ Resolution : Less than 1024x768  
MPEG4 SP, ASP/L3,L5 (720x480, 2Mbps, 30fps)  
WMV9 SP, MP/medium level (720x480, 2Mbps, 30fps)
- ♦ Supported image file format : JPEG, 3200x2400
- ♦ The Digital Photo Frame uses these modules:  
WinCE 5.0  
For more information, visit the following web sites:  
RMI Alchemy Developer Support Site(<http://209.254.132.52/RMI/EmbeddedDeveloper.nsf>)

Using, copying or reproducing the whole or part of this manual without written permission from Samsung Electronics is prohibited. The content of this manual is subject to change without prior notice. ©2007 All rights reserved. Samsung Electronics.

Digital Photo Frame  
**SPF-72V**



## Free Manuals Download Website

<http://myh66.com>

<http://usermanuals.us>

<http://www.somanuals.com>

<http://www.4manuals.cc>

<http://www.manual-lib.com>

<http://www.404manual.com>

<http://www.luxmanual.com>

<http://aubethermostatmanual.com>

Golf course search by state

<http://golfingnear.com>

Email search by domain

<http://emailbydomain.com>

Auto manuals search

<http://auto.somanuals.com>

TV manuals search

<http://tv.somanuals.com>