

SERIES  
**4**

452/453/457

# LCD TV

## Installation manual

imagine the possibilities

Thank you for purchasing this Samsung product.  
To receive more complete service, please register  
your product at

[www.samsung.com/register](http://www.samsung.com/register)

Model \_\_\_\_\_ Serial No. \_\_\_\_\_



Figures and illustrations in this User Manual are provided for reference only and may differ from actual product appearance. Product design and specifications may be changed without notice.

## Instruction

This TV is provided with interactive functionality through a set-back box (SBB/STB) connected to the TV, and with other TVs in a computer controlled system for hotels and other hospitality businesses.

**Interactive :** When the TV is powered-up initially, it sends a command to identify the SBB/STB; if identified, the TV switches to ONLINE mode and full control is through the SBB/STB.

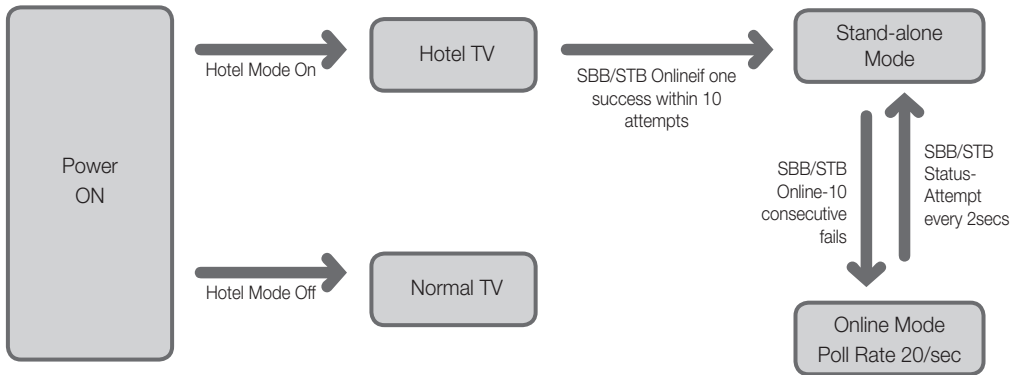
If the TV is in ONLINE mode, it stops receiving IR(Samsung remote) commands and acts according to interface protocol.

**Stand-Along:** If SBB/STB is not identified, the TV should be switched to STAND-ALONE mode with restricted operation.

## Operational Modes

When this TV (in Hotel mode) is operated with a SBB/STB, it is in one of two states

- ONLINE or STAND-ALONE. In the STAND-ALONE state, the TV will act as a Hotel TV, but without active communication. This is to prevent guests from trying to cheat the system by disconnecting the SBB/STB.



To set the details for Stand-alone or interactive mode, refer to pages 22-25(Setting the hotel option data : Stand-alone mode and Interactive mode)

- Some operations may be restricted to prevent guests from "cheating" the TV system.
- No main menu(Interactive mode) or Channel Menu, Plug & Play in Main Menu(Stand-Along mode)
- Limited Volume and Panel key lock or unlock

## Still image warning

Avoid displaying still images (like jpeg picture files) or still image element (like TV Program logo, panorama or 4:3 image format, stock or news bar at screen bottom etc.) on the screen. Constant displaying of still picture can cause uneven wear of screen phosphor, which will affect image quality. To reduce risk of this effect, please follow below recommendations:

- Avoid displaying the same TV channel for long periods.
- Always try to display any image on full screen, use TV set picture format menu for best possible match.
- Reduce brightness and contrast values to minimum required to achieve desired picture quality, exceeded values may speed up the burnout process.
- Frequently use all TV features designed to reduce image retention and screen burnout, refer to proper user manual section for details.

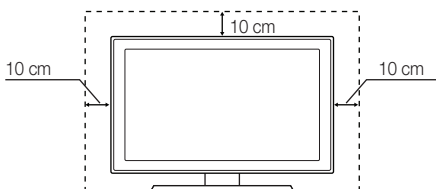
## Securing the Installation Space

Keep the required distances between the product and other objects (e.g. walls) to ensure proper ventilation.

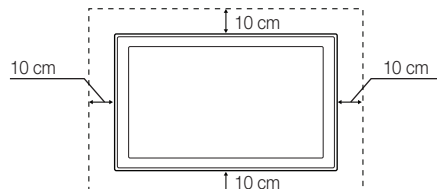
Failing to do so may result in fire or a problem with the product due to an increase in the internal temperature of the product.

- When using a stand or wall-mount, use parts provided by Samsung Electronics only.
  - If you use parts provided by another manufacturer, it may result in a problem with the product or an injury due to the product falling.
- The appearance may differ depending on the product.

### Installation with a stand.



### Installation with a wall-mount.



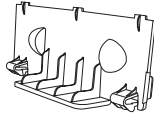
# Contents

- Accessories ..... 4
- Install the Stand ..... 4
- How to Adjust the Stand (19inch model only) ..... 5
- How to Adjust the Angle of the TV (19inch model only) ..... 5
- Installing VESA Compliant Mounting Devices (19inch model only) ..... 6
- Using the Decoration Covers (19inch model only) ..... 6
- Installing the LCD TV Stand (19inch model only) ..... 7
- Viewing the Connection Panel ..... 8
- Viewing the Control Panel ..... 12
- Viewing the Remote Control ..... 13
- Connecting the Bathroom Speakers ..... 17
- Installing the Wall Mount ..... 35
- Securing the TV to the Wall ..... 36
- Assembling the Cables ..... 36
- Anti-theft Kensington Lock ..... 37
- Specifications ..... 37

## Accessories

- ✎ Please make sure the following items are included with your LCD TV. If any items are missing, contact your dealer.
- ✎ The items' colour and shapes may vary depending on the models.

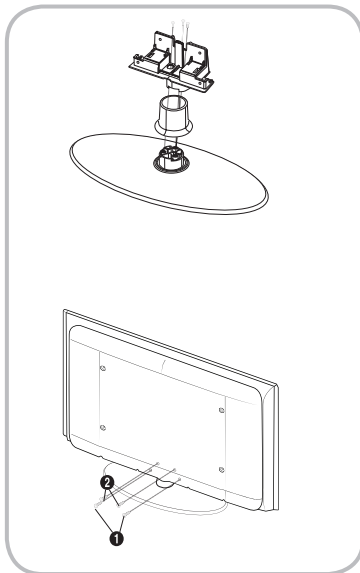
- Remote Control & Batteries (AAA x 2)
- Owner's Instructions
- Warranty Card / Safety Guide / Registration Cards (Not available in all locations)
- Cleaning Cloth
- Power Cord / Data Cable



Blanking Bracket

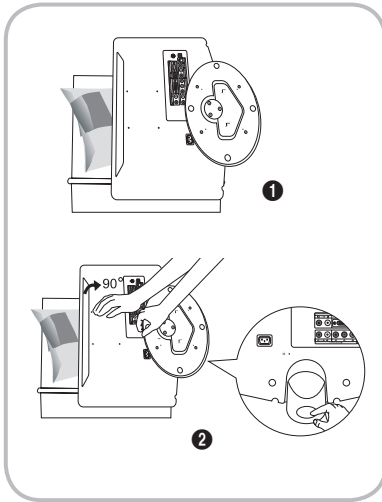
- ✎ The stand and stand screw may not be included depending on the model.
- ✎ The Data Cable may not be included depending on the SI Vendor.

## Install the Stand



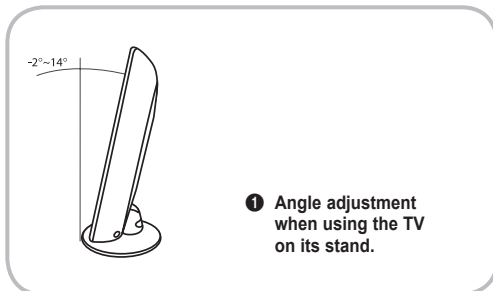
- ✎ Preset: Place the Guide Stand and Cover Neck onto the stand and fasten it using the screws.
1. Attach your LCD TV to the stand.
    - ✎ Two or more people should carry the TV.
    - ✎ Make sure to distinguish between the front and back of the stand when assembling them.
    - ✎ To make sure the TV is installed on the stand at a proper level, do not apply excess downward pressure to the upper left or right sides of the TV.
  2. Fasten two screws at position **1** and then fasten two screw at position **2**.
    - ✎ Stand the product up and fasten the screws. If you fasten the screws with the LCD TV placed down, it may lean to one side.
    - ✎ The stand is installed for models with the screen size of 37 inch and above.

## How to Adjust the Stand (19inch model only)



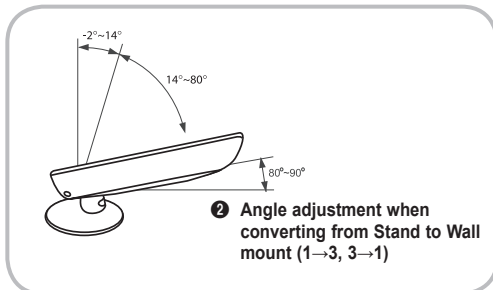
1. Place the front of the TV onto a soft cloth or cushion on a table as in Figure ①.
  - ✎ Align the TV bottom along the table edge.
2. Press on the center of the TV back. Adjust the stand as in Figure ② while
  - ✎ pressing the button on the back of the stand.
3. Place the TV on the table so that the TV sits safely on the table.

## How to Adjust the Angle of the TV (19inch model only)

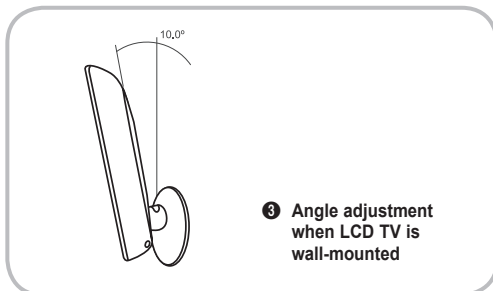


✎ When you adjust the stand, press the button on the back of the stand.

1. Figure ① shows the adjustment angle ( $-2^{\circ}\sim 14^{\circ}$ ) when you use the LCD on its stand. Excessive tilting can turn the LCD TV over which may cause damage.



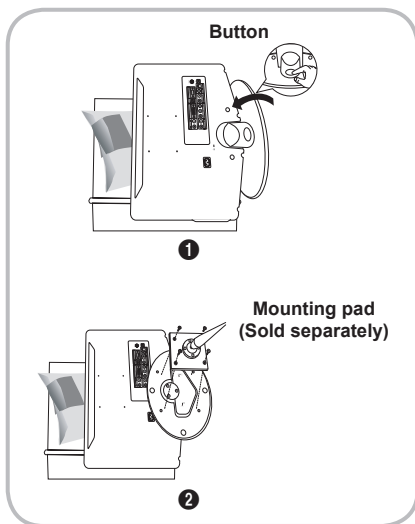
2. Figure ② shows the adjustment angle ( $14^{\circ}\sim 80^{\circ}$ ) when you convert the LCD from stand-based use to wall-mount.



3. Figure ③ shows the adjustment angle ( $0^{\circ}\sim 10^{\circ}$ ) when you mount the LCD TV to a wall.

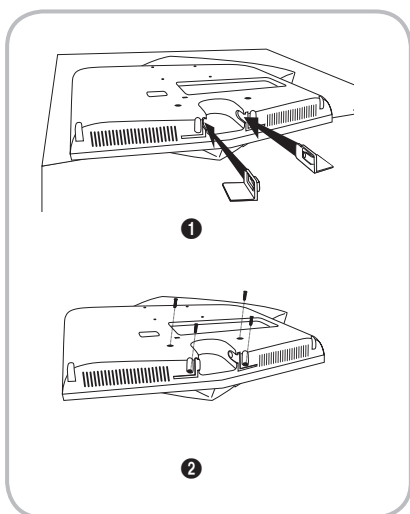
✎ You will hear a "Click" sound when changing the angle from 1 to 2 or 3 to 2.

### Installing VESA Compliant Mounting Devices (19inch model only)



1. Place the TV face down on a soft cloth or cushion on a table.
2. Adjust the stand, pressing the button on the back of the stand.
3. Align the mounting interface pad (not supplied) with the holes in the stand bottom and secure it with the four screws that come with the arm-type base, wall mount hanger or other bases (not supplied).

### Using the Decoration Covers (19inch model only)

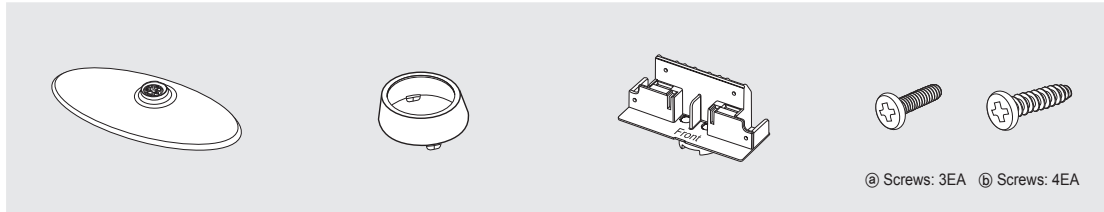


1. When installing the TV on the wall without using the stand, insert decoration covers into the holes as described in the picture ①.
2. After inserting the decoration covers, fasten them with 4 screws as described in the picture ②.

## Installing the LCD TV Stand (19inch model only)

If any items are missing, contact your dealer.

🔧 When installing the stand, use the provided components and parts.

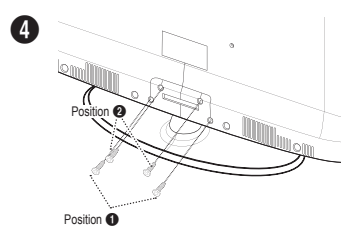
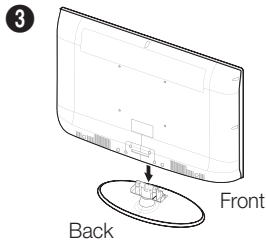
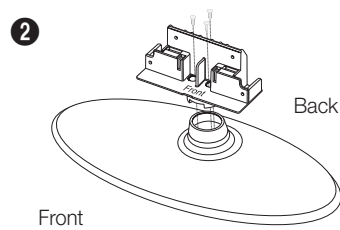
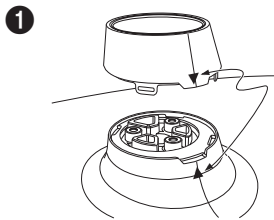


Stand

Cover Neck

Guide Stand

Screws



1. Insert the Cover Neck into the groove of the stand. Assemble the LCD TV stand by aligning the triangle figures indicated by the arrow marks.
2. Place the Guide Stand onto the stand which is assembled in step 1 and fasten it using the three a screws.
3. Connect your LCD TV and the stand.
4. Fasten two b screws at position 1 and then fasten two a screws at position 2

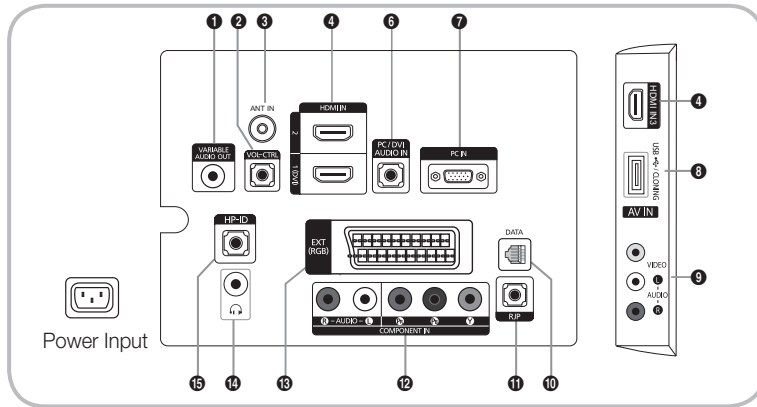
### Caution



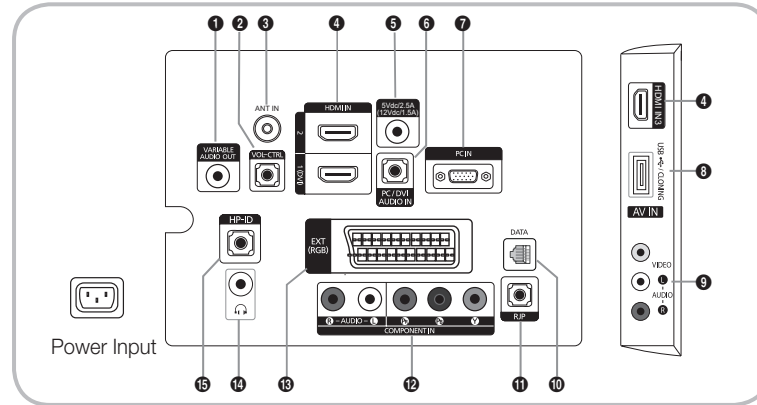
- 🔧 Make sure to distinguish between the front and back of each component when assembling them.
- 🔧 Make sure that at least two persons lift and move the LCD TV.
- 🔧 Stand the product up and fasten the screws. If you fasten the screws with the LCD TV placed down, it may lean to one side.

## Viewing the Connection Panel

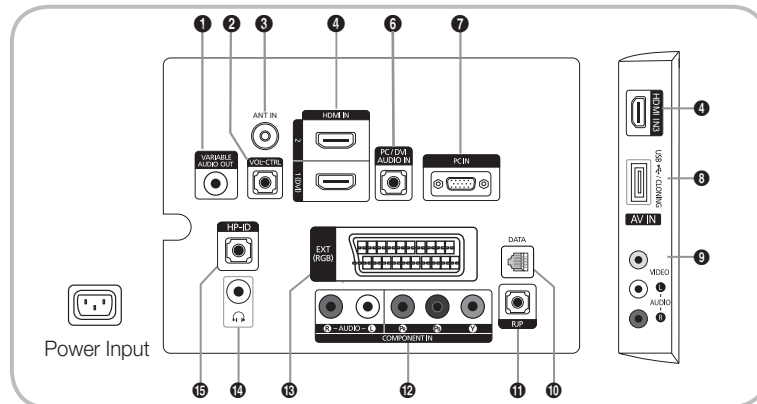
LE32C452C4HXXC  
 LE32C453C4HXXC  
 LA32C457C6HXZN  
 LA37C457C6HXZN  
 LA40C457C6HXZN



LE32C457C6HXXC  
 LE37C457C6HXXC  
 LE40C457C6HXXC

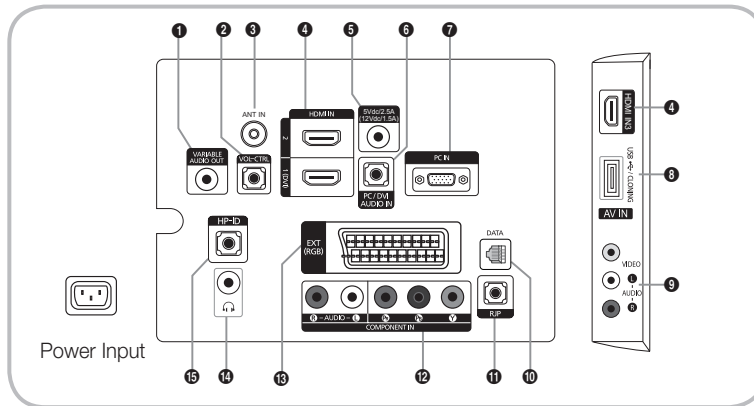


LE26C452C4HXXC  
 LE26C453C4HXXC  
 LA26C457C6HXZN

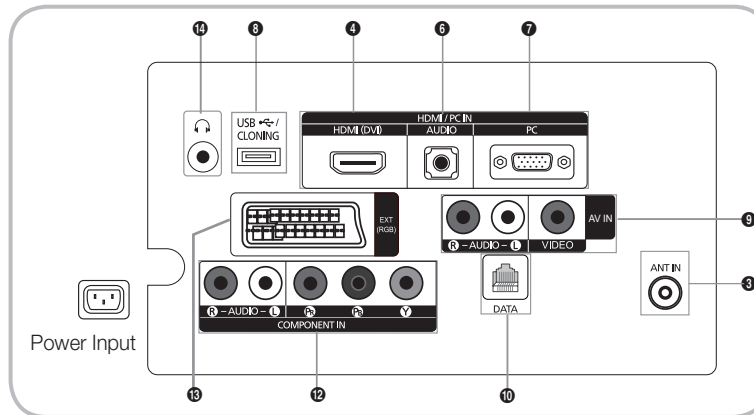




LE26C457C6HXXC



LE19C452C4HXXC  
LE19C453C4HXXC  
LE22C452C4HXXC  
LE22C453C4HXXC  
LE22C457C6HXXC



- Whenever you connect an external device to your TV, make sure that power on the unit is turned off.
- When connecting an external device, match the color of the connection terminal to the cable.

- 1 VARIABLE AUDIO OUT:** Used for the audio output to the Bathroom speaker. Connect the Bathroom Wall Box and the Variable port (RCA). (Not available for 19/22 inch model.)
- 2 VOL-CTRL:** Used to control the volume of the Bathroom speaker. Connect the Bathroom Wall Box and the VOL-CTRL port.
- 3 ANT IN:** To view television channels correctly, a signal must be received by the set from one of the following sources. An outdoor antenna / A cable television network / A satellite network.
  - For Norway: Utstyr som er koplet til beskyttelsesjord via nettplugg og/eller via annet jordtilkøpelt utstyr-og er tilkøpelt et kabel-TV nett, kan forårsake brannfare. For å unngå dette skal det ved tilkøpling av utstyret til kabel-TV nettet installeres en galvanisk isolator mellom utstyret og kabel-TV nettet.
  - For Sweden: Utrustning som är kopplad till skyddsjord via jordat vägguttag och/eller via annan utrustning och samtidigt är kopplad till kabel-TV nät kan i vissa fall medföra risk för brand. För att undvika detta skall vid anslutning av utrustningen till kabel-TV nät galvanisk isolator finnas mellan utrustningen och kabel-TV nätet.
- 4 HDMI IN 1 (DVI), 2, 3:** Connects to the HDMI jack of a device with an HDMI output.
  - No sound connection is needed for an HDMI to HDMI connection.
  - Use the **HDMI IN 1** jack for DVI connection to an external device. Use a DVI to HDMI cable or DVI-HDMI adapter (DVI to HDMI) for video connection and the **PC/DVI AUDIO IN** jacks for audio.
- 5 5V DC/2.5A (12V DC/1.5A):** Used to supply power for the SBB or STB. (Available for B457 26/32/37 inch model only.)
- 6 PC/DVI AUDIO IN:** connect to the audio output jack on your PC


7 PC IN: Connect to the video output jack on your PC.

### Display Modes





Both screen position and size will vary depending on the type of PC monitor and its resolution. The resolutions in the table are recommended.

 Optimal resolution is 1360 X 768 @ 60 Hz. (Only for 19" 22" 26" 32" models)

Mode	Resolution	Horizontal Frequency (KHz)	Vertical Frequency (Hz)	Pixel Clock Frequency (MHz)	Sync Polarity (H / V)
IBM	640 x 350	31.469	70.086	25.175	+/-
	720 x 400	31.469	70.087	28.322	-/+
MAC	640 x 480	35.000	66.667	30.240	-/-
	832 x 624	49.726	74.551	57.284	-/-
VESA CVT	720 x 576	35.910	59.950	32.750	-/+
	1280 x 720	56.456	74.777	95.750	-/+
VESA DMT	640 x 480	31.469	59.940	25.175	-/-
	640 x 480	37.500	75.000	31.500	-/-
	640 x 480	37.861	72.809	31.500	-/-
	800 x 600	37.879	60.317	40.000	+/+
	800 x 600	46.875	75.000	49.500	+/+
	800 x 600	48.077	72.188	50.000	+/+
	1024 x 768	48.363	60.004	65.000	-/-
	1024 x 768	56.476	70.069	75.000	-/-
	1024 x 768	60.023	75.029	78.750	+/+
	1280 x 720	45.000	60.000	74.250	+/+
1360 x 768	47.712	60.015	85.500	+/+	
VESA GTF	1280 x 720	52.500	70.000	89.040	-/+

 Optimal resolution is 1920 X 1080 @ 60 Hz. (Only for 37" 40" models)

Mode	Resolution	Horizontal Frequency (KHz)	Vertical Frequency (Hz)	Pixel Clock Frequency (MHz)	Sync Polarity (H / V)
IBM	640 x 350	31.469	70.086	25.175	+/-
	720 x 400	31.469	70.087	28.322	-/+
MAC	640 x 480	35.000	66.667	30.240	-/-
	832 x 624	49.726	74.551	57.284	-/-
	1152 x 870	68.681	75.062	100.000	-/-
VESA CVT	720 x 576	35.910	59.950	32.750	-/+
	1152 x 864	53.783	59.959	81.750	-/+
	1280 x 720	56.456	74.777	95.750	-/+
	1280 x 960	75.231	74.857	130.000	-/+
VESA DMT	640 x 480	31.469	59.940	25.175	-/-
	640 x 480	37.861	72.809	31.500	-/-
	640 x 480	37.500	75.000	31.500	-/-
	800 x 600	37.879	60.317	40.000	+/+
	800 x 600	48.077	72.188	50.000	+/+
	800 x 600	46.875	75.000	49.500	+/+
	1024 x 768	48.363	60.004	65.000	-/-
	1024 x 768	56.476	70.069	75.000	-/-
	1024 x 768	60.023	75.029	78.750	+/+
	1152 x 864	67.500	75.000	108.000	+/+
	1280 x 1024	63.981	60.020	108.000	+/+
	1280 x 1024	79.976	75.025	135.000	+/+
	1280 x 720	45.000	60.000	74.250	+/+
	1280 x 800	49.702	59.810	83.500	-/+
	1280 x 800	62.795	74.934	106.500	-/+
	1280 x 960	60.000	60.000	108.000	+/+
	1360 x 768	47.712	60.015	85.500	+/+
	1440 x 900	55.935	59.887	106.500	-/+
1440 x 900	70.635	74.984	136.750	-/+	
1680 x 1050	65.290	59.954	146.250	-/+	
VESA GTF	1280 x 720	52.500	70.000	89.040	-/+
	1280 x 1024	74.620	70.000	128.943	-/-
VESA DMT / DTV CEA	1920 x 1080p	67.500	60.000	148.500	+/+

-  When using an HDMI / DVI cable connection, you must use the HDMI (DVI) IN 1 jack.
-  The interlace mode is not supported.
-  The set might operate abnormally if a non-standard video format is selected.
-  Separate and Composite modes are supported. SOG is not supported.

**8 USB (HDD) / CLONING**

- Connector for software upgrades and Media Play, etc.
- Service connection.

**9 AV IN 1, 2**

- Connect a VIDEO cable to an appropriate external A/V device such as VCR, DVD or Camcorder.
- Connect audio cables to [R-AUDIO-L] on your TV and the other ends to corresponding audio out jacks on the A/V device.

**10 DATA**

- Used to support data communication between the TV and the SBB.
- The TV jack type is RJ-12.

**11 RJP:** This port is an RJP (Remote Jack Pack) communication port that enables connecting different devices to additional module so as to improve device use convenience.

**12 COMPONENT IN**

- Connects Component video / audio.
- Connect component video cables (optional) to the component jacks ("PR", "PB", "Y") on the rear of your TV and the other ends to corresponding component video out jacks on the DVD.
- If you wish to connect both the Set-Top Box and DVD, you should connect the Set-Top Box to the DVD and connect the DVD to the component jacks ("PR", "PB", "Y") on your TV.
- The PR, PB and Y jacks on your component devices (DVD) are sometimes labeled Y, B-Y and R-Y or Y, Cb and Cr.
- Connect RCA audio cables (optional) to [R - AUDIO - L] on the rear of the TV set and the other ends to corresponding audio out jacks on the DVD.

**13 EXT**


Connector	Input			Output
	Video	Audio (L/R)	RGB	Video + Audio (L/R)
EXT	0	0	0	Only TV or DTV output is available

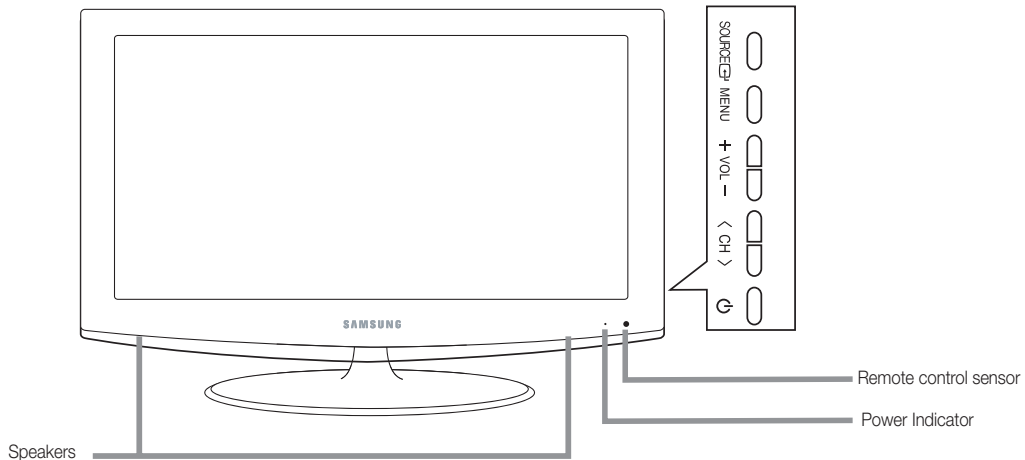
 Inputs or outputs for external devices, such as VCR, DVD, video game device or video disc players.


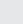

**14 Headphones jack:** Headphones may be connected to the headphone jack on your TV. While the headphones are connected, the sound from the built-in speakers will be disabled.

**15 HP-ID:** Enables to identify whether a headphone jack is inserted into the additionally created head phone box.

## Viewing the Control Panel

 The product colour and shape may vary depending on the model.



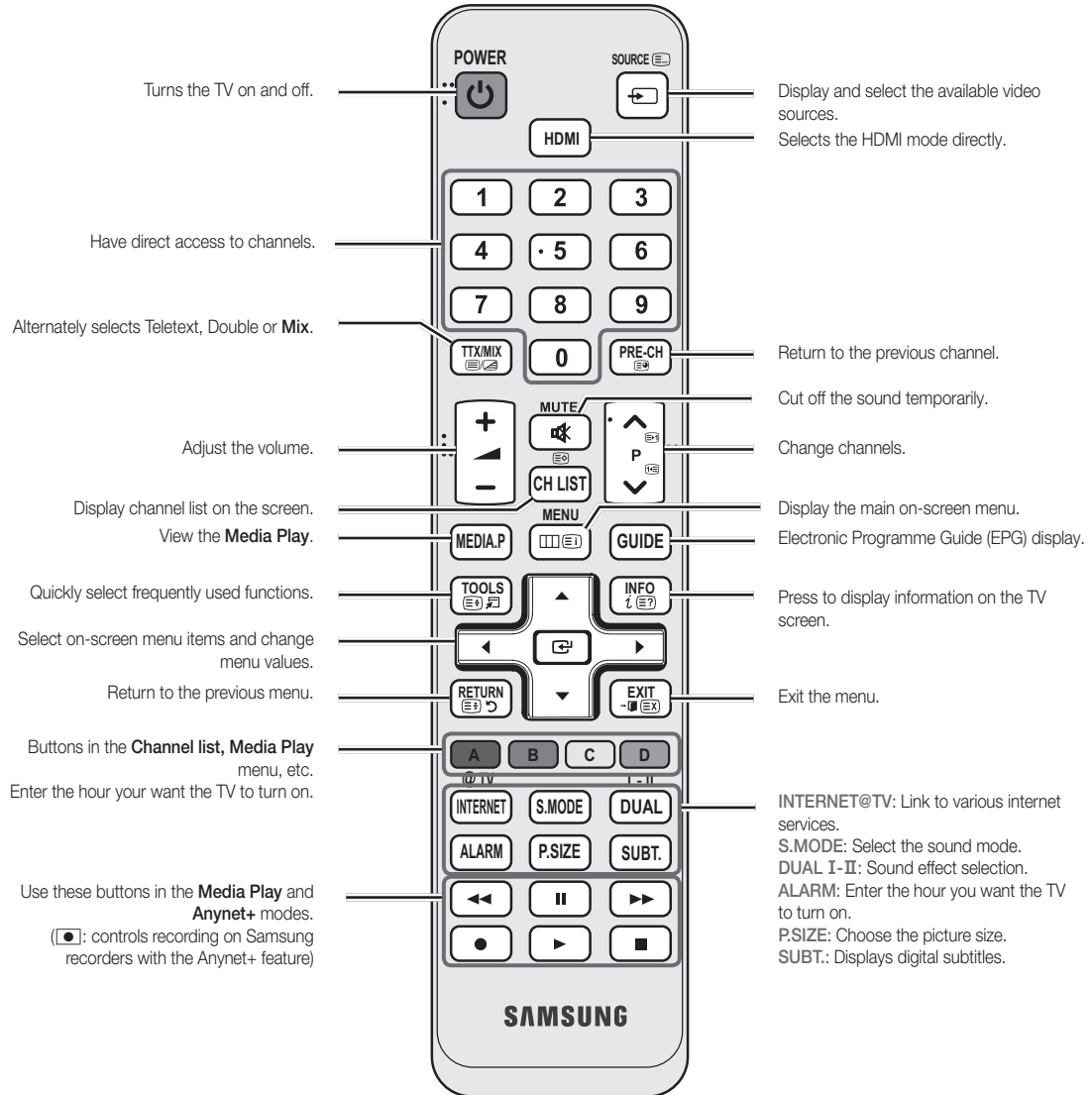
SOURCE 	Toggles between all the available input sources. In the on-screen menu, use this button as you would use the ENTER  button on the remote control.
MENU 	Displays an on-screen menu, the OSD (on screen display), of your TV's features.
-VOL+	Adjusts the volume. In the OSD, use the -VOL+ buttons as you would use the ◀ and ▶ buttons on the remote control.
▼ CH ▲	Changes the channels. In the OSD, use the ▼ CH ▲ buttons as you would use the ▼ and ▲ buttons on the remote control.
⏻ (Power)	Turns the TV on or off.
Remote control sensor	Aim the remote control towards this spot on the TV.
Power Indicator	Blinks and turns off when the power is on and lights up in standby mode.

### Standby mode

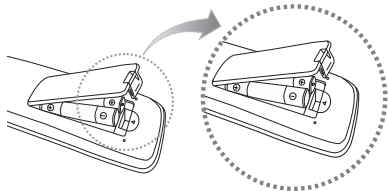
Do not leave your TV in standby mode for long periods of time (when you are away on a holiday, for example). A small amount of electric power is still consumed even when the power button is turned off. It is best to unplug the power cord.

## Viewing the Remote Control

This is a special remote control for the visually impaired persons and has Braille points on the Power, Channel and Volume buttons.



### Installing batteries (Battery size: AAA)

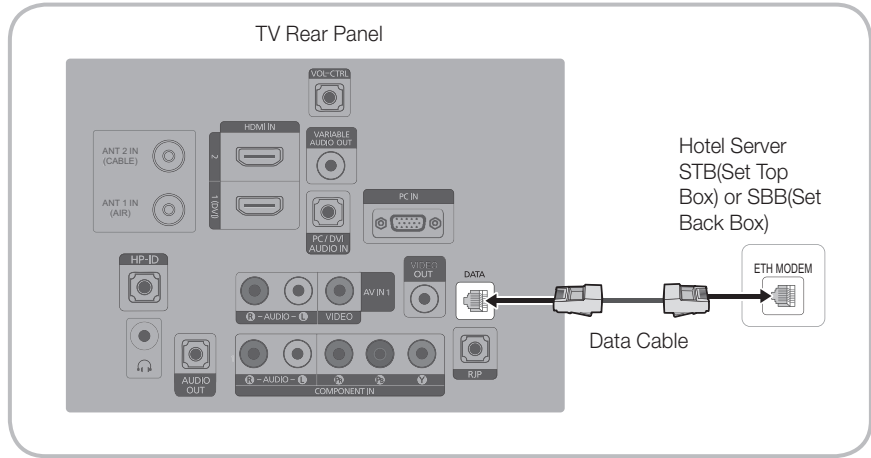


#### NOTE

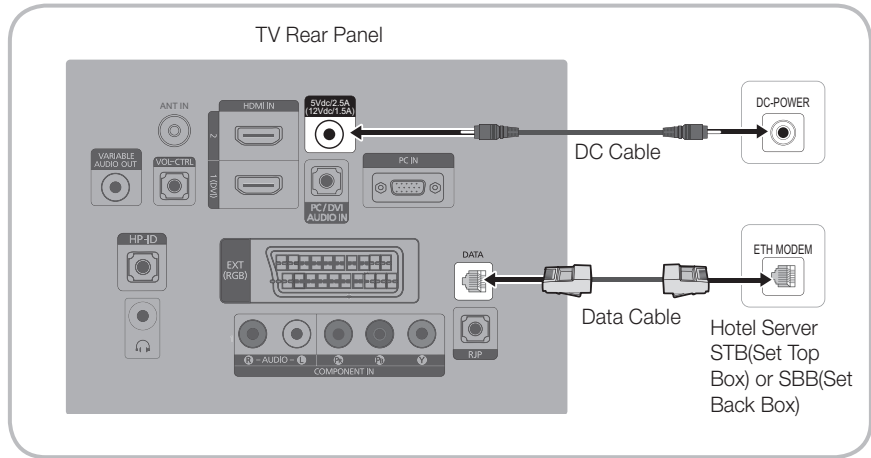
- Use the remote control within 23 feet from the TV.
- Bright light may affect the performance of the remote control. Avoid using nearby special fluorescent light or neon signs.
- The colour and shape may vary depending on the model.

## Connecting the TV with SBB

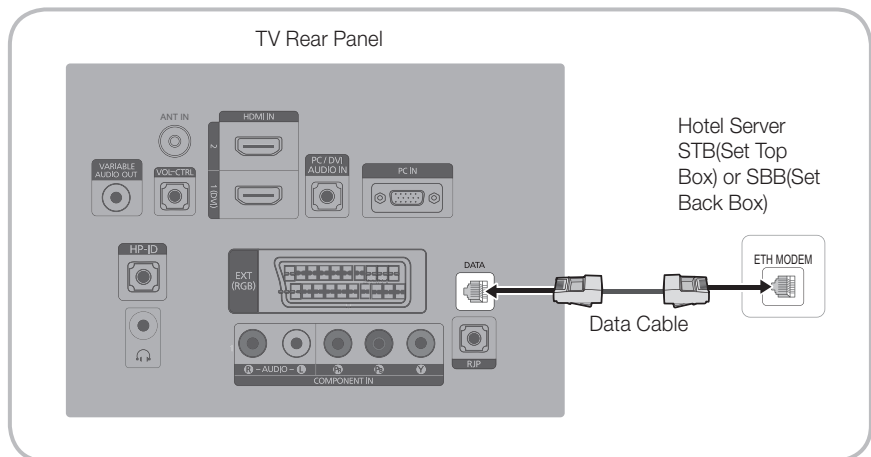
LE32C452C4HXXC  
 LE32C453C4HXXC  
 LA32C457C6HXZN  
 LA37C457C6HXZN  
 LA40C457C6HXZN



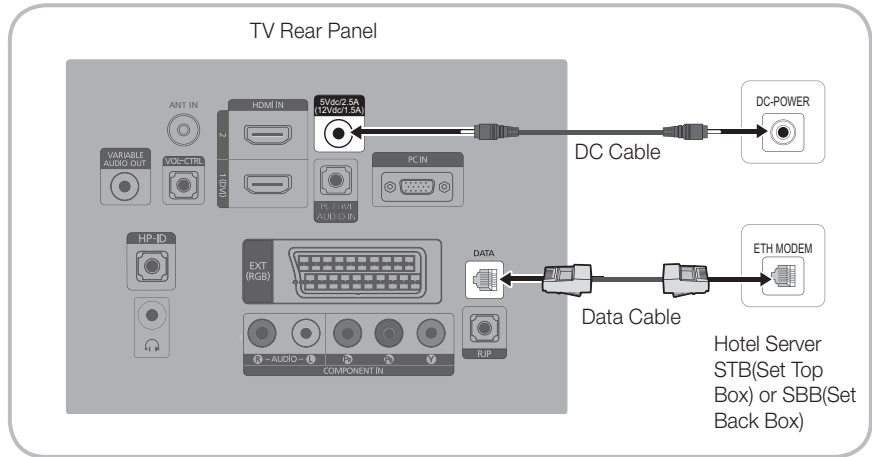
LE32C457C6HXXC  
 LE37C457C6HXXC  
 LE40C457C6HXXC



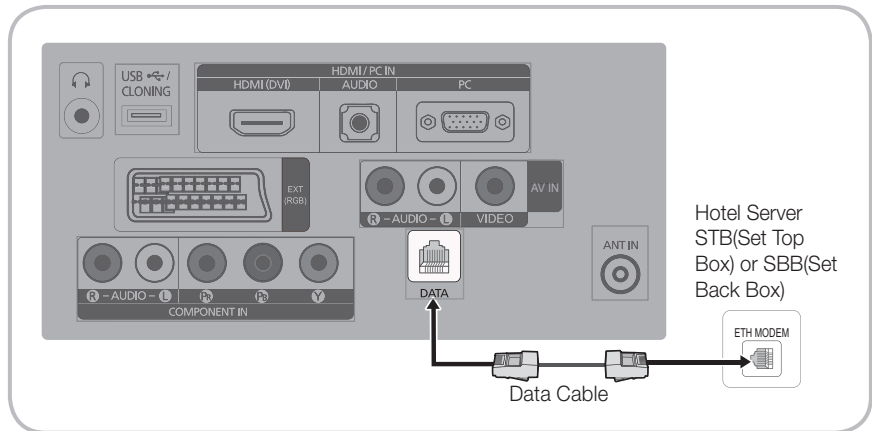
LE26C452C4HXXC  
 LE26C453C4HXXC  
 LA26C457C6HXZN



LE26C457C6HXXC



LE19C452C4HXXC  
LE19C453C4HXXC  
LE22C452C4HXXC  
LE22C453C4HXXC  
LE22C457C6HXXC






1. Connect the [DATA] jack of the TV to the [ETH MODEM] jack of the STB(SBB) with the Data cable.
  - Use data communication.
2. Connect the [Class 2 Wiring-5V DC/2.5A (12V DC/1.5A)] jack of the TV to the [DC-POWER] jack of the STB (SBB) with the DC cable.
  - The supported jack type differs depending on the STB (SBB) model.
  - TV Jack Type: 6.5 Ø DC Power Jack
  - Some STB (SBB) devices are not compatible with the data cable supplied with the TV.

## Warning

When you use the DC power output jack, you have to check the standard output power of STB(SBB) and you should use the DC power within the standard output(Class 2 Wiring-5V DC/2.5A (12V DC/1.5A).

- For 5V SBB, SBB load current must not exceed 2.5A.
- For 12V SBB, SBB load current must not exceed 1.5A.
- The initial output is 5V.
- For 12V SBB, you have to change the output voltage to 12V in order to use the power.

## Changing the Output Voltage (Only for EU C457 26" 32" 37" 40" model)

1. Press the **POWER** button.  
 The TV is powered on.
2. Press the following remote control buttons in order:  
**INFO** → **MENU** → **0** → **1** → **EXIT**  
 The Hotel Option menu appears.
3. Press the **▲** or **▼** button to select DC Power Output.  
Press the **◀** or **▶** button to select 12V or 5V.
4. Remove the power cord then plug it back in again.  
 The voltage change is applied when you turn the TV on again after changing the Interactive mode Option setting.

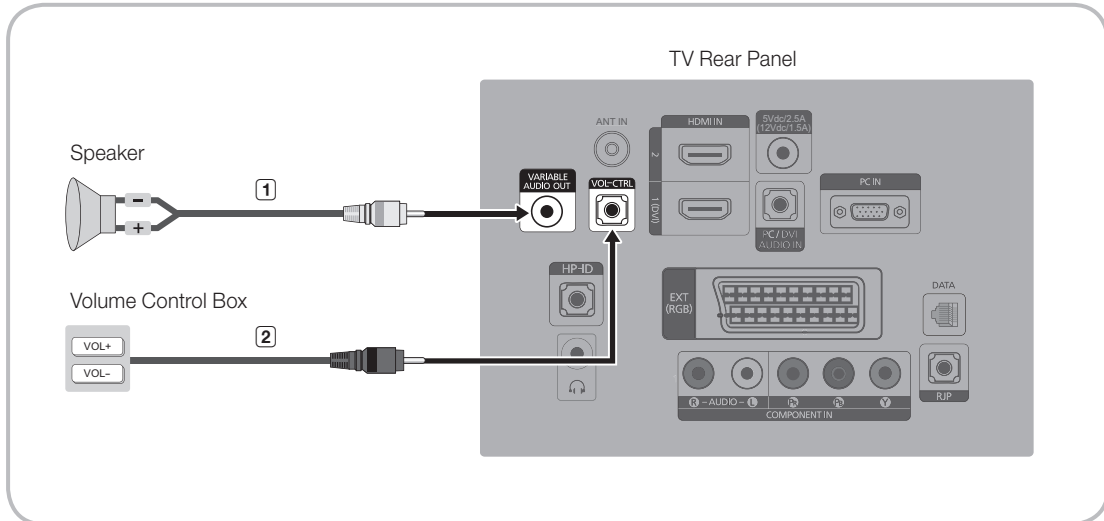
Hotel Mode	ON	RJP Priority AV	1	Logo Download	...
SI Vendor	Samsung	RJP Priority PC	2	Logo Display Time	...
Power On Channel	1	RJP Priority HDMI	3	Power On Option	Last Option
Channel Type	ATV	RJP AV Option	AV1	Auto Source	OFF
Power On Volume	10	RJP HDMI Option	HDMI1	Energy Saving	Off
Min Volume	0	Sub AMP Volume	6	Clone : TV to USB	
Max Volume	100	Sub AMP Mode	2	Clone : USB to TV	
Panel Button Lock	Unlock	Local Time	Manual	Pan Euro MHEG	OFF
Power On Source	TV	Time Format	12 Hour	Cloning Data Reset	OFF
Picture Menu Lock	OFF	PMOLED Test	Failure	Welcome Message	
Channel Editor		PMOLED Mormal Dim.	3	Edit Welcome Message	
Music Mode AV	OFF	PMOLED Standby Dim.	2	<b>DC Power Out</b>	<b>5V</b>
Music Mode PC	OFF	Audio Loop In	OFF	Channel Auto Store	
Music Mode Comp	OFF	Menu Display	ON	Dynamic SI	OFF
Music Mode Backlight	OFF	Hotel Logo	OFF		



## Connecting the Bathroom Speakers

You can connect the Bathroom Speakers in the following method.

### Connecting through the Variable Output (available without an external amplifier)



1. Connect the **VARIABLE AUDIO OUT** port of the TV to the Bathroom Wall Speakers of the hotel.

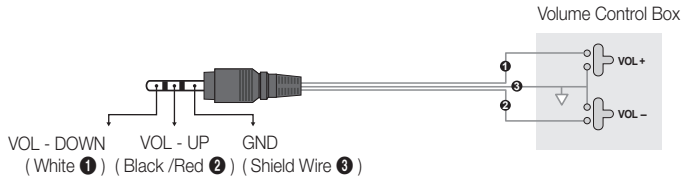


2. Connect the **VOL-CTRL** jack of the TV to the Volume Control Box Switch port of the Bathroom Wall of the hotel.

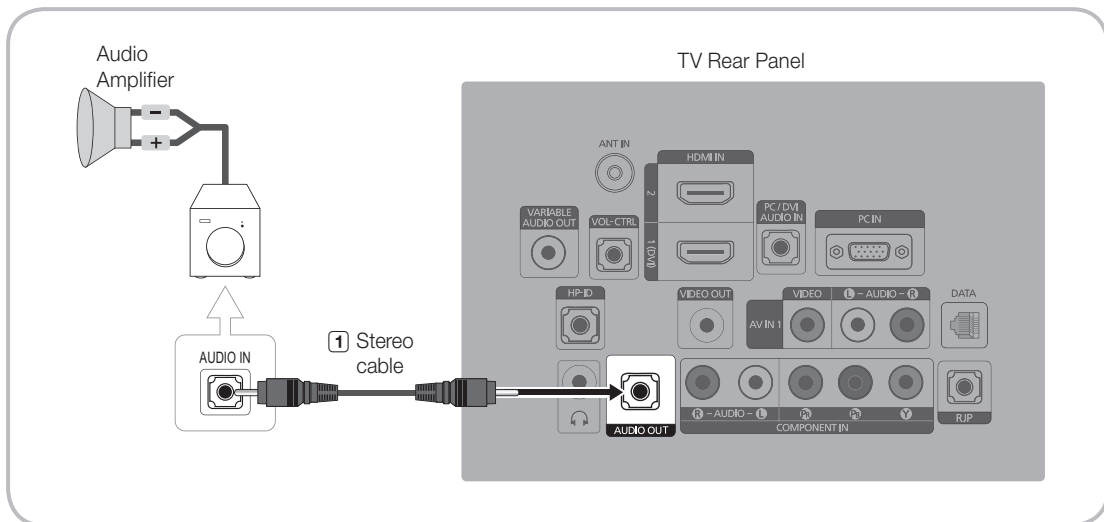
The maximum speaker output is 4W, 8Ω.

- Installing the Volume Control
  - If you configure the Volume Control Box as shown in the figure, you can control the volume of the bathroom speakers.
  - The jack that is connected from the Volume Control Box to the TV is a 3.5mm normal Phone jack.
  - Volume Control Box switch consists of Tact switch.
    - Setting the Sub AMP Mode
    - 0: Turns the Sub AMP function off (PWM off).
    - 1: Determines the Sub volume according to the main volume control. That is, the sub volume is determined according to the Power On Volume, the Min Volume, and the Max Volume values of the Hotel Mode.
    - 2: Determines the volume according to the bathroom control panel setting.

- Variable Output Port Specifications
  - Speaker Wire: Use speaker cable no more than 82 feet (25m) in length.



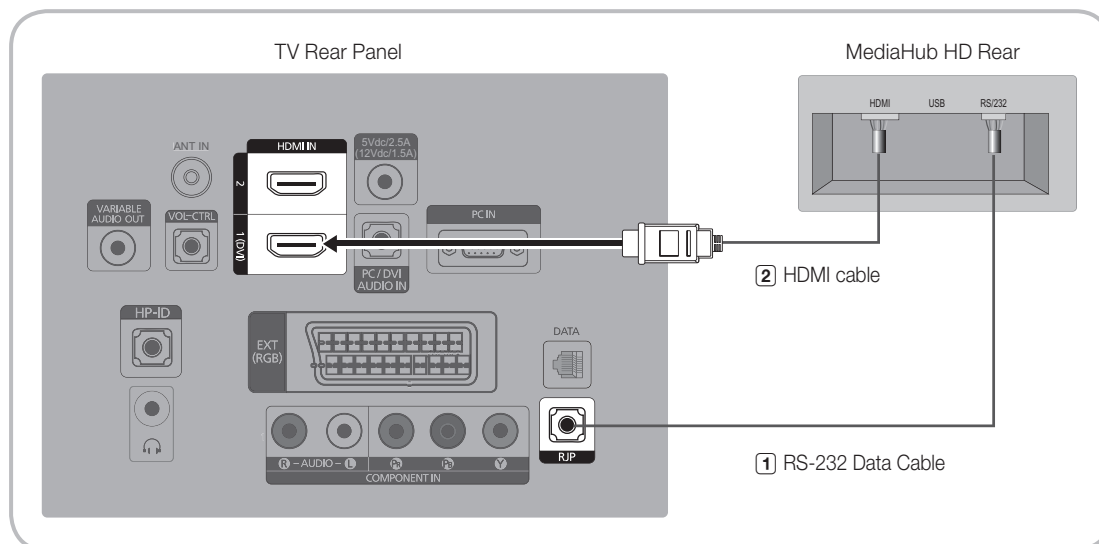
### Connect through the Fixed Output (available without an external amplifier)



1. Connect the AUDIO OUT port of the TV and the Audio In port of the audio amplifier with a stereo cable.

## Connecting the MediaHub HD

Output of any external source connected to MediaHub HD on hotel desk.



1. Connect the RJP port of the TV and the RS/232 port of the MediaHub HD.
2. Connect the HDMI port of the TV and the HDMI port of the MediaHub HD.

- MediaHub HD

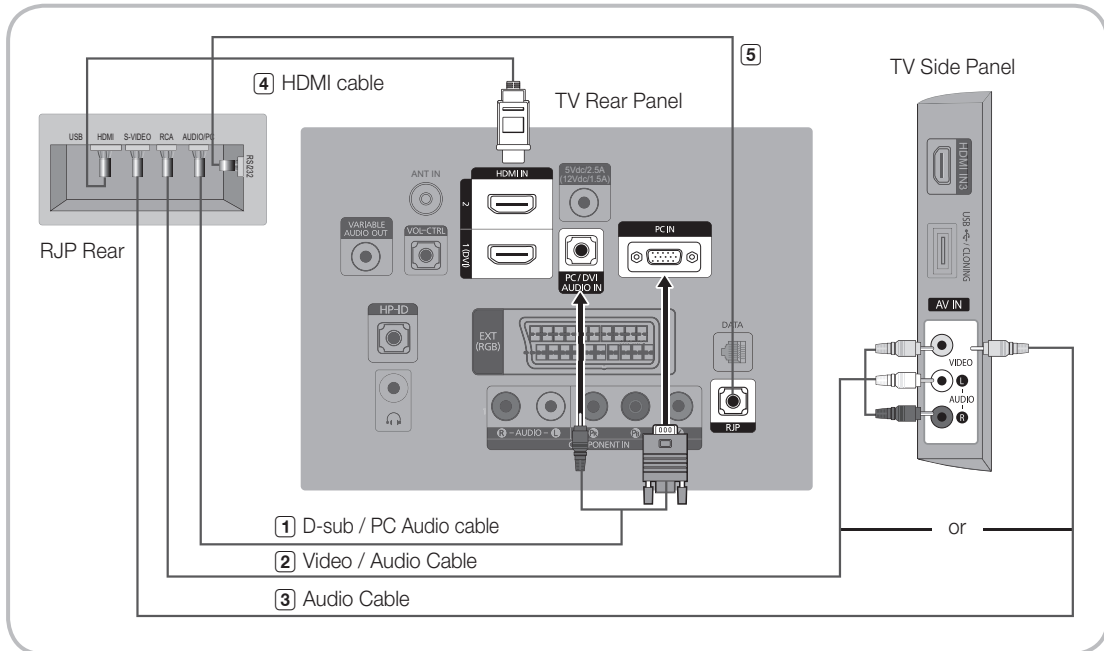
- The MediaHub HD is a hardware module that has different Audio Video inputs (A/V, Audio, PC, HDMI and USB) and corresponding outputs. The corresponding output sources are connected from MediaHub to TV. The MediaHub communicates with the TV via RS232. Hot Plug & Play is a function that allows hotel guests to connect an external source to the MediaHub. The MediaHub communicates with the TV by sending messages regarding Active/Inactive sources. The TV will switch to the Active external source.
- You have to connect the HDMI of the MediaHub to the HDMI 1 port of the TV.
- When the TV is on, connect the TV and the RJP within 10 seconds.

- Special features

- PIP
- Bluetooth
- Media Player (MediaHub HD+ only)
- Auto Detection

## Connecting the RJP (Remote Jack Pack)

Output of any external source connected to RJP on hotel desk.



1. Connect the PC IN / PC/DVI AUDIO IN port of the TV to the PC/AUDIO port of the RJP.
2. Connect the AV IN [VIDEO]/[L-AUDIO-R] port of the TV to the S-VIDEO port of the RJP.
3. Connect the AV IN [VIDEO] port of the TV to the S-VIDEO port of the RJP.
4. Connect the HDMI port of the TV and the HDMI port of the RJP.
5. Connect the RJP port of the TV and the RS/232 port of the RJP.

The RJP (Remote Jack Pack) compatible with this Samsung TV is TeleAdapt TA-7610, TA-7650 (HD) and TA-7660 (HD Plus).

- **RJP (Remote Jack Pack):** RJP stands for Remote Jack Pack. The RJP is a hardware module that has different Audio Video inputs (A/V, Audio, PC and HDMI) and corresponding outputs. The corresponding output sources are connected from RJP to TV. The RJP communicates with the TV via RS232. Hot Plug & Play is a function that allows hotel guests to connect an external source to the RJP. The RJP communicates with the TV by sending messages regarding Active/Inactive sources. The TV will switch to the Active external source according to the priority set by the User.
  - You can select HDMI 1, 2, 3 and AV 1, 2 for connecting RJP.
  - When the TV is on, connect the TV and the RJP within 10 seconds.
- The RJP can be returned to the factory default settings by pressing the A/V and HDMI buttons simultaneously for 10 seconds. All LEDs blink 5 times to Acknowledge that the reset has been performed.
- The RJP will automatically turn off any LEDs after 5 minutes to avoid unnecessary light pollution in the hotel room. The LEDs that were turned off will turn on again if the guest touches any of the buttons and the 5 minute timer will restart. If the guest then touches another source button, the TV will change to the selected source and the corresponding LED will be lit.
- After an RJP Reset or a TV Power OFF/ON, it takes approx. 10 seconds to establish communications between the TV and the RJP.

- The following table shows the approximate time in seconds to switch from the TV to the input source, based on the priority.

Scenario 1: When no inputs are connected.

Source	To Connect
AV	2 Sec
PC	0.7 Sec
HDMI	3.9 Sec

Scenario 2: When two or more inputs are connected and an Input source is disconnected and then reconnected.

Source	Disconnect	To Connect	Total
AV	4.5 Sec	2 Sec	6.5 Sec
PC	0.7 Sec	0.7 Sec	1.4 Sec
HDMI	3.9 Sec	3.9 Sec	7.8 Sec

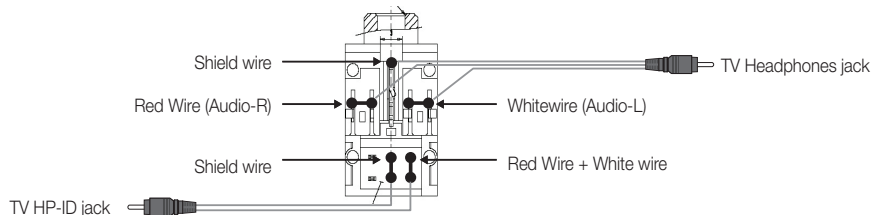
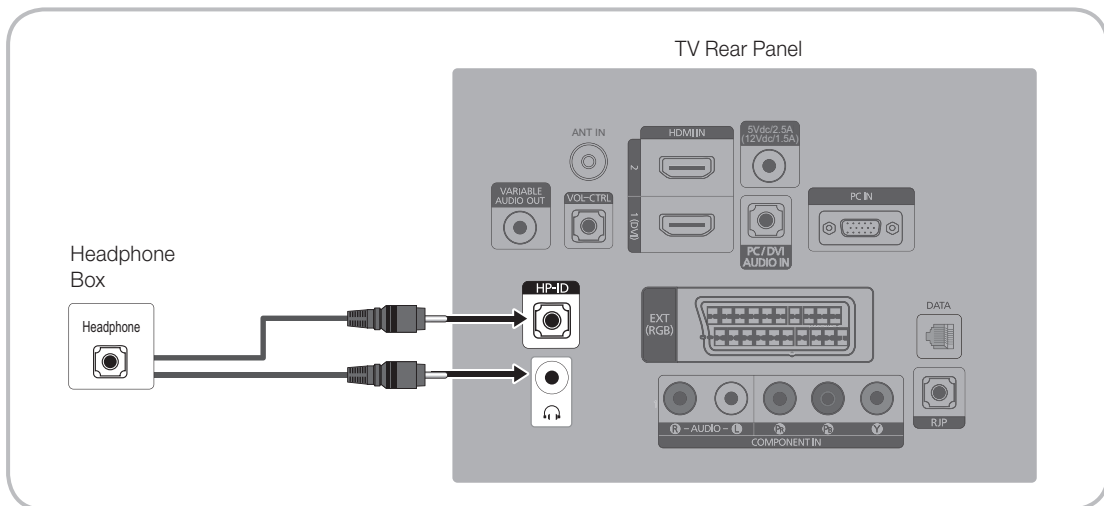
E.g. If the RJP has all its live sources AV, PC and HDMI connected, AV is viewed as the highest priority. If the RJP is in HDMI mode, and a guest removes and reconnects the AV, the minimum time required to switch to the AV is 6.5 seconds.

- To connect audio (Ipod or Mp3), Music mode should be ON and Jack Ident detect should be OFF.
- AV, PC and HDMI input sources are supported.

## Audio Loop In

An additionally created Headphone Box can be installed on a bed or business desk so that users can use it conveniently. The installation procedures are given below. (Not available for 19/22 inch model.)

- Detailed Drawing of the Headphone Box



## Setting the Hotel Option Data

### Standalone Mode

To Enter: Press the **MUTE** → **1** → **1** → **9** → **ENTER** buttons in order.

To Exit from this menu : power off and turn on again.

No	Item	initial Value	Description
1	Hotel Mode	ON	Hotel mode(Stand alone) on/off
2	SI Vendor	OFF	Select the SI Vendor
3	Power On Channel	1	TV will switch on to this particular Channel
4	Channel Type	ATV	Provides channel Type description for Power On channel selected. i.e. Selected channel analog or Digital & antennae selection(Air or Cable).
5	Power On Volume	10	TV will switch on with this Volume Level
6	Min Volume	0	Minimum Volume Level setting user can set
7	Max Volume	100	Maximum Volume Level setting user can set
8	Panel Button Lock	Unlock	Front panel(Local key) operation on/off - Unlock: Unlock All panel key - Lock: Lock All panel key - OnlyPower : Lock All panel key except Power panel key
9	Power On Source	TV	Enable or disable Picture Menu
10	Picture Menu Lock	OFF	Provided option for editing Channel Name and Number and video Mute settings for channels in channel List.
11	Channel Editor		Provided option for editing Channel Name and Number and video Mute settings for channels in channel List
12	Music Mode AV	OFF	To get music output from mp3/audio player in AV Input Source. Audio enabled, video disabled in this mode
13	Music Mode PC	OFF	To get music output from mp3/audio player in PC Input Source. Audio enabled, video disabled in this mode
14	Music Mode Comp	OFF	To get music output from mp3/audio player in Component Input Source. Audio enabled, video disabled in this mode
15	Music Mode Backlight	OFF	Backlight On/Off option in Music mode to save energy
16	RJP Priority AV	1	If the jack priority is set, the corresponding source is automatically set when a jack is inserted according to the jack priority.
17	RJP Priority PC	2	If the jack priority is set, the corresponding source is automatically set when a jack is inserted according to the jack priority.
18	RJP Priority HDMI	3	If the jack priority is set, the corresponding source is automatically set when a jack is inserted according to the jack priority.
19	RJP AV Option	AV1	Select RJP AV Source (AV1)
20	RJP HDMI Option	HDMI1/DVI	Select RJP HDMI Source (HDMI1/HDMI2/HDMI3)
21	Sub Amp Volume	6	Sub AMP Volume level at power on initial condition.
22	Sub Amp mode	2	Determines the Sub AMP operation mode. - 0: Turns the Sub AMP function off (PWM off). - 1: Determines the Sub volume according to the main volume control. That is, the sub volume is determined according to the Power On Volume, the Min Volume, and the Max - 2: Determines the volume according to the bathroom control panel setting.

No	Item	initial Value	Description
23	Local time	Manual	Selection of the way to update clock data - Manual: Use clock data from DVB channel or manual clock setting when the TV is in the stand-alone mode - TTX: manual clock setting (with updating from TTX data)
24	Time Format	12 Hour	Select time expression method(12H/24H) Reset AC power after setting this option
25	PMOLED Test	Failure	To test PMOLED itself (brightness and pixel)
26	PMOLED Normal Dim.	3	PMOLED brightness selection
27	PMOLED StandBy Dim.	2	PMOLED STY-BY brightness selection
28	Audio Loop In	OFF	Audio loop identification or H.P identification selection
29	Menu Display	ON	- On : Main Menu display - Off : Main Menu No display
30	Customer Logo	OFF	Select Hotel Logo
31	Logo Download	...	Download Hotel Logo from USB to TV
32	Logo Display Time	...	Selection of the logo display time - 3 sec: Hotel logo is displayed for 3sec. - 5 sec: Hotel logo is displayed for 5sec. - 7 sec: Hotel logo is displayed for 7sec.
33	Power On Option	Last Option	Power On(AC Power On) Option - STN-BY : Stand-By Mode - Power On : Power On - LAST OPT : Last Power State
34	Auto Source	OFF	While TV is in power on state, if PC source is connected to TV, TV will automatically switch to PC mode.
35	Energy Saving	OFF	This feature adjusts the brightness of the TV in order to reduce power consumption. - Off: Turns off the energy saving function. - Low: Sets the TV to low energy saving mode. - Medium: Sets the TV to medium energy saving mode. - High: Sets the TV to high energy saving mode. - Auto: Sets the TV to automatically energy saving mode.
36	Clone TV to USB	-	USB Clone : TV → USB
37	Clone USB to TV	-	USB Clone : USB → TV
38	Pan Euro MHEG	OFF	
39	Cloning Data Reset	OFF	Once Clone USB to TV done, If Cloning Data Reset On, any change made in clone settings is reverted back to clone data setting during Power On. i.e. Default clone data setting made is maintained when Cloning Data Reset Option is ON
40	Welcome message	Off	Display Welcome Message
41	Edit Welcome message		Edit Welcome Message
42	DC Power Out	5V	Select DC power output (5V/12V)
43	Mixed Channel Map	OFF	Mix Analogue and Digital Channels
44	Channel Auto Store		Provides Option for Tuning & storing Air + Cable channels together along with Air and Cable channels separately.
45	Dynamic SI	OFF	- ON : Check the DTV Program channel number. (DTV channel editor inaccessible) - OFF : No Check of the DTV Program channel number. (DTV channel editor accessible, but additional channel program number update not supported)

## Interactive Mode


To Enter: Press the **INFO** → **MENU** → **0** → **1** → **EXIT** buttons in order, in normal operation state.

To Exit from this menu : Power Off and Turn On again. (Press **POWER** button with general SAMSUNG remote)

No	Item	initial Value	Description
1	Hotel Mode	On	Hotel mode(Interactive) on/off.
2	SI Vendor	Samsung	Select the SI Vendor.
3	Power On Channel	1	TV will switch on to this particular Channel.
4	Channel Type	ATV	Provides channel Type description for Power On channel selected. i.e. Selected channel analog or Digital & antennae selection(Air or Cable).
5	Power On Volume	10	TV will switch on with this Volume Level.
6	Min Volume	0	Minimum Volume Level setting user can set.
7	Max Volume	100	Maximum Volume Level setting user can set.
8	Panel Button Lock	Unlock	Front panel(Local key) operation on/off - unlock: Unlock All panel key - Lock: Lock All panel key - OnlyPower: Lock All panel key except Power panel key
9	Power On Source	TV	Select the Input source when TV is turned on initially.
10	Picture Menu Lock	OFF	Provided option for editing Channel Name and Number and video Mute settings for channels in channel List.
11	Channel Editor		To edit Channel Number and Channel Name.
12	Music Mode AV	OFF	To get music output from mp3/audio player in AV Input Source. TV sound is generated in only black picture whether being Video Singal or not.
13	Music Mode PC	OFF	To get music output from mp3/audio player in AV Input Source. TV sound is generated in only black picture whether being Video Singal or not.
14	Music Mode Comp	OFF	To get music output from mp3/audio player in PC Input Source. TV sound is generated in only black picture whether being Video Singal or not.
15	Music Mode Backlight	OFF	Backlight On/Off option in Music mode to save energy.
16	RJP Priority AV	1	If the jack priority is set, the corresponding source is automatically set when a jack is inserted according to the jack priority.
17	RJP Priority PC	2	If the jack priority is set, the corresponding source is automatically set when a jack is inserted according to the jack priority.
18	RJP Priority HDMI	3	If the jack priority is set, the corresponding source is automatically set when a jack is inserted according to the jack priority.
19	RJP AV Option	AV1	Select RJP AV Source (AV1).
20	RJP HDMI Option	HDMI1/DVI	Select RJP HDMI Source (HDMI1/HDMI2/HDMI3)
21	Sub Amp volume	6	Sub AMP Volume level at power on initial condition.
22	Sub Amp mode	2	Determines the Sub AMP operation mode. - 0: Turns the Sub AMP function off (PWM off). - 1: Determines the Sub volume according to the main volume control. That is, the sub volume is determined according to the Power On Volume, the Min Volume, and the Max - 2: Determines the volume according to the bathroom control panel setting.
23	Local time	Manual	Selection of the way to update clock data - Auto: Use clock data from server when the TV is in the interactive mode. - Manual: Use clock data from DVB channel or manual clock setting when the TV is in the stand-alone mode. - TTX: manual clock setting (with updating from TTX data)



No	Item	initial Value	Description
24	Time Format	12hour	Select time expression method(12H/24H) Reset AC power after setting this option
25	PMOLED Test	Failure	To test PMOLED itself (brightness and pixel)
26	PMOLED Normal Dim.	3	PMOLED brightness selection
27	PMOLED StandBy Dim.	2	PMOLED STY-BY brightness selection
28	Audio Loop In	OFF	Audio loop identification or H.P identification selection
29	Menu Display	OFF	- On : Main Menu display - Off : Main Menu No display
30	Customer Logo	OFF	Select Hotel Logo
31	Logo Download	...	Download Hotel Logo from USB to TV
32	Logo Display Time	...	Select the logo display time - 3 sec: Hotel logo is displayed for 3sec. - 5 sec: Hotel logo is displayed for 5sec. - 7 sec: Hotel logo is displayed for 7sec.
33	Power On Option	Last Option	Power On(AC Power On) Option - STN-BY : Stand-By Mode - Power On : Power On - LAST OPT : Last Power State
34	Auto Source	OFF	While TV is in power on state, if PC source is connected to TV, TV will automatically switch to PC mode.
35	Energy Saving	Off	This feature adjusts the brightness of the TV in order to reduce power consumption. - Off: Turns off the energy saving function. - Low: Sets the TV to low energy saving mode. - Medium: Sets the TV to medium energy saving mode. - High: Sets the TV to high energy saving mode. - Auto: Sets the TV to automatically energy saving mode .
36	Clone TV to USB	-	USB Clone : TV → USB
37	Clone USB to TV	-	USB Clone : USB → TV
38	Pan Euro MHEG	OFF	
39	Cloning Data Reset	OFF	Once Clone USB to TV done, If Cloning Data Reset On, any change made in clone settings is reverted back to clone data setting during Power On.i.e. Default clone data setting made is maintained when Cloning Data Reset Option is ON
40	Welcome message	OFF	Display Welcome Message
41	Edit Welcome message	-	Edit Welcome Message
42	DC Power Out	5 V	Select DC power output (5V/12V).
43	Channel Auto Store		Provides Option for Tuning & storing Air + Cable channels together along with Air and Cable channels separately.
44	Dynamic SI	OFF	- ON : Check the DTV Program channel number. (DTV channel editor inaccessible) - OFF : No Check of the DTV Program channel number. (DTV channel editor accessible, but additional channel program number update not supported)


 When Interactive mode is On, you cannot enter the Hotel Options by pressing the **MUTE → 1 → 1 → 9 → ENTER** button. To exit the Hotel Options, turn the power off.

## Welcome Message

Welcome message is a feature to display custom message on TV, every time TV is turned on by Guest in Hotel room.

- Welcome message settings are placed in Hotel Option Menu.
- Welcome message should be ON in order to display the message on power on.

Hotel Mode	ON	RJP Priority AV	1	Logo Download	...
SI Vendor	Samsung	RJP Priority PC	2	Logo Display Time	...
Power On Channel	1	RJP Priority HDMI	3	Power On Option	Last Option
Channel Type	ATV	RJP AV Option	AV1	Auto Source	OFF
Power On Volume	10	RJP HDMI Option	HDMI1	Energy Saving	Off
Min Volume	0	Sub AMP Volume	6	Clone : TV to USB	
Max Volume	100	Sub AMP Mode	2	Clone : USB to TV	
Panel Button Lock	Unlock	Local Time	Manual	Pan Euro MHEG	OFF
Power On Source	TV	Time Format	12 Hour	Cloning Data Reset	OFF
Picture Menu Lock	OFF	PMOLED Test	Failure	<b>Welcome Message</b>	
Channel Editor		PMOLED Normal Dim.	3	Edit Welcome Message	
Music Mode AV	OFF	PMOLED Standby Dim.	2	DC Power Out	5V
Music Mode PC	OFF	Audio Loop In	OFF	Channel Auto Store	
Music Mode Comp	OFF	Menu Display	ON	Dynamic SI	OFF
Music Mode Backlight	OFF	Hotel Logo	OFF		

- Welcome message can be of 25 characters and it can be edited by changing its text in Hotel Service menu.
- Following is the list of characters supported for Welcome message:  
 In letters from A to Z only in capital letters is allowed.
- Welcome message can be edited by using navigation, color & enter key of a Remote in "Edit Welcome Message" OSD.



- Welcome message and hotel logo cannot be active at the same time.

## Hotel Logo

Hotel Logo is a function that shows picture image which represents hotel during power on procedure.

- Hotel Logo will be in hotel option menu in both Standalone and Interactive mode.
- Lower menus will be enabled when hotel Logo option is on.
- Hotel Logo will be displayed if there is logo image which is already stored in memory and hotel logo option is on during power on procedure.
- Hotel Logo will not be displayed when Hotel Logo option is off, even if the logo image exists.

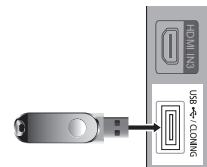
Hotel Mode	ON	RJP Priority AV	1	Logo Download	...
SI Vendor	Samsung	RJP Priority PC	2	Logo Display Time	...
Power On Channel	1	RJP Priority HDMI	3	Power On Option	Last Option
Channel Type	ATV	RJP AV Option	AV1	Auto Source	OFF
Power On Volume	10	RJP HDMI Option	HDMI1	Energy Saving	OFF
Min Volume	0	Sub AMP Volume	6	Clone : TV to USB	
Max Volume	100	Sub AMP Mode	2	Clone : USB to TV	
Panel Button Lock	Unlock	Local Time	Manual	Pan Euro MHEG	OFF
Power On Source	TV	Time Format	12 Hour	Cloning Data Reset	OFF
Picture Menu Lock	OFF	PMOLED Test	Failure	Welcome Message	
Channel Editor		PMOLED Normal Dim.	3	Edit Welcome Message	
Music Mode AV	OFF	PMOLED Standby Dim.	2	DC Power Out	5V
Music Mode PC	OFF	Audio Loop In	OFF	Channel Auto Store	
Music Mode Comp	OFF	Menu Display	ON	Dynamic SI	OFF
Music Mode Backlight	OFF	Hotel Logo	OFF		

- **Hotel Logo**
  - This option is to decide if hotel logo image will be displayed or not.
- **Hotel Logo DL**
  - This option is to download logo image to memory.
  - Download the Logo File from PC to USB.
  - **Logo File Format**
    - Only bmp format is supported and the File name should be "samsung.bmp".
    - File size must be under 256Kbytes.
    - Maximum resolution is 960 x 540.
    - Connect the USB to TV and press Enter key.
    - "Wait" message will be displayed during copying image to TV.
    - "Completed" message will be displayed when the copy operation was finished successfully.
    - "Failed" message will be displayed when the copy operation was finished unsuccessfully.
    - "No USB" message will be displayed when any USB is not connected.
    - "No File" message will be displayed when there is no file to copy in USB.
- **Logo Display Time**
  - This option is to decide Logo display time.
  - 3 sec / 5 sec / 7sec

## USB Cloning

USB Cloning is a function to download user configured settings (**Picture, Sound, Input, Channel, Setup, and Hotel Setup**) from one TV set and upload the same to other TV sets. All the user-defined settings from the TV (Master Set) can be copied to the USB device.


- **Cloning from TV to USB:** It is an operation to copy the stored data from the specific area on the EEPROM from the TV set to the USB device.
  1. Insert a USB drive into the USB port on the rear of the TV.
  2. Enter the Interactive menu by pressing this buttons in order.
    - Interactive mode : **INFO** → **MENU** → 0 → 1 → **EXIT**
    - Standalone mode : **MUTE** → 1 → 1 → 9 → **ENTER**
  3. Press the ▲ or ▼ button to select “Clone:TV to USB”, then press the **ENTER** button.
  4. The message “Clone:TV to USB” is displayed, then press the **ENTER** button.
  5. You can Make sure USB cloning behavior.
    - **In Progress:** during copying data to USB.
    - **Completed:** copy operation was finished successfully.
    - **Failed:** copy operation was not finished successfully.
    - **No USB:** any USB is not connected.



Power On Option	Last Option
Auto Source	OFF
Energy Saving	Off
<b>Clone : TV to USB</b>	
Clone : USB to TV	
Pan Euro MHEG	OFF
Cloning Data Reset	OFF
Welcome Message	
Edit Welcome Message	

- **Cloning from USB to TV:** It is an operation to download the stored data in USB device to TV set.
  1. Insert a USB drive into the USB port on the rear of the TV.
  2. Enter the Interactive menu by pressing this buttons in order.
    - Interactive mode : **INFO** → **MENU** → 0 → 1 → **EXIT**
    - Standalone mode : **MUTE** → 1 → 1 → 9 → **ENTER**
  3. Press the ▲ or ▼ button to select “Clone:USB to TV”, then press the **ENTER** button.
  4. The message “Clone:USB to TV” is displayed, then press the **ENTER** button.
  5. You can Make sure USB cloning behavior.
    - **In Progress:** during copying data to TV.
    - **Completed:** copy operation was finished successfully.
    - **Failed:** copy operation was not finished successfully.
    - **No USB:** any USB is not connected.
    - **No File:** there is no file to copy in USB.

Power On Option	Last Option
Auto Source	OFF
Energy Saving	Off
<b>Clone : TV to USB</b>	
<b>Clone : USB to TV</b>	
Pan Euro MHEG	OFF
Cloning Data Reset	OFF
Welcome Message	
Edit Welcome Message	

 The operation to copy from USB to TV can be executed by pressing **ENTER** key for 5 seconds.

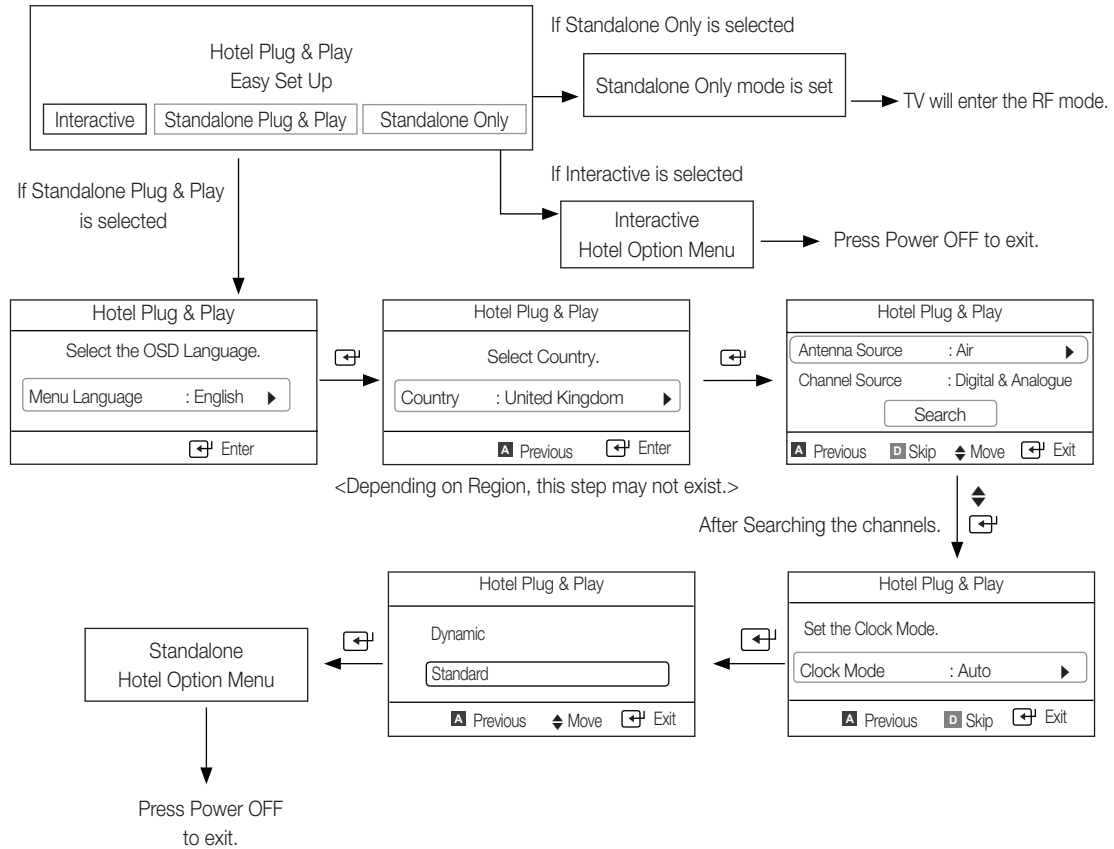
For fast instant cloning during installation!  
Insert USB key with master settings from first TV and press Enter key for 5 seconds.

## Hotel Plug & Play

Hotel Plug & Play is a function that automatically performs the Hotel mode selection, Country Setup, Clock Setup and Picture mode Setup once.

- Hotel Plug & Play is available only one time when power is first turned ON.
- After setting up first TV and Clone TV to USB
- Next TV only needs to exit Hotel Plug & Play, connect USB, then Clone USB to TV.

### • UI Scenario



- **Hotel Plug & Play OSD**

- Initial Highlight: Interactive
- If Standalone Only button is selected, the Standalone hotel mode is set by default and "Standalone mode is set" OSD is displayed for 3 seconds.
- TV enters into RF mode automatically after displaying "Standalone mode is set" OSD for 3 seconds.
- When Interactive mode is selected, Interactive Setup Menu is displayed. Press power off button to exit from Interactive menu.
- When Standalone Plug & Play mode is selected, "Select Menu Language" OSD is displayed.

- **Select Menu Language OSD**

- When Standalone Plug & Play is selected from "Easy Set Up" OSD, "Select Menu Language" OSD is displayed.
- Initial Highlight : English
- Display time: OSD timeout and operation are the same as Samsung's consumer TV models.
- If ENTER button is pressed, "Select Area" OSD is displayed.

- **Auto Search Mode OSD**

- If skip option is selected, it goes to Clock setting OSD.
- If ENTER button is pressed, auto searching of channels is performed.
- The OSD Display time, which is from the time that Auto Store is started to the time that Auto Sort is completed, is 30 seconds.

- **Clock setting OSD**

- Display time: 30 seconds.
- The Clock Set item OSD is displayed
- If ENTER button is pressed after setting the clock or in Auto, Picture Mode OSD is displayed.

- **Picture Mode OSD**

- Initial Highlight: Standard.
- The Picture Mode OSD is displayed and the Dynamic or a Standard Picture mode can be selected.
- After selecting the picture mode, it enters Standalone Setup Menu OSD, press power off to exit.

## Multi Code Remocon

Multi Code Remocon is a special transmitter which is designed to control each TVs with one remote.

This function is useful where there is more than one TV in one location like hospital. Set ID number will be displayed in source OSD. It is possible to support up to 10 different remote key transmission for multi code.

Initial ID code which each TV has is "0".

- ID code could be set and reset in Analog TV mode or PC mode. (not available in TTX channel or DTV channel)
- ID code could be from 0 to 9.
- Press Blue Key for over 3 seconds and the digit key a user wants to set.
- Set ID OSD will be displayed in central position.
- The following words will be displayed. "Remote control code is set to x. If you want to change Remote control code. Enter the digit you want to change." (x is the digit number) This OSD will be kept displaying until exit key is input.



Remote control code is set to 0. If you want to change Remote control code, enter the digit you want to change.

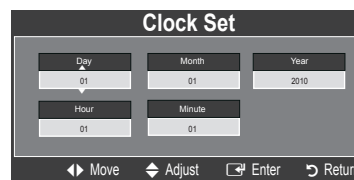
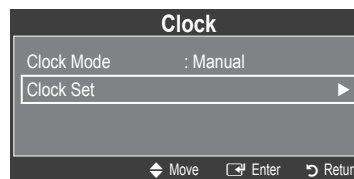
- For example, TV and Remote will be set ID code #1 if user presses #1.
- The following words will be displayed. "Remote control code is changed to 1" Then TV can be controlled by only remote which has same ID code with TV's.
- If ID code does not match between remote and TV, the following words will be displayed. "TV ID x"(x is the TV's ID)
- To reset ID code, press Yellow key for over 3 seconds. ID code of both TV and Remote will be reset to "0". "Remote control code is set to 0." will be displayed.

## Setting the Time



MENU → Setup → Time → Clock → Clock Set

- **The time is entered**
  - Press the remote control button to select **Clock set** and set up the time.
- **Setting the Interactive Mode Time**
  - If the Hotel System transmits time information, the time is set automatically.
  - If the Hotel System does not transmit time information, the time cannot be displayed.



If the time is set, clock will be displayed on the front panel. (This function is available on the B457 model.)

## Mixed Channel Map

Mixed Channel Map is a function to mix Air and Cable channels.

[ If there are no Cable channels, you can use this item as channel sorting. ]

- Mixed channel Map, Channel Editor and Channel Auto Store are newly placed in Hotel Option Menu.
- Mixed channel Map should be ON in order to mix Air and Cable channels.
- Use Channel Editor to sort the channels as user-desired channel numbers.

<b>Hotel Mode</b>	<b>ON</b>	RJP Priority AV	1	Logo Download	...
SI Vendor	OFF	RJP Priority PC	2	Logo Display Time	...
Power On Channel	1	RJP Priority HDMI	3	Power On Option	Last Option
Channel Type	ATV	RJP AV Option	AV1	Auto Source	OFF
Power On Volume	10	RJP HDMI Option	HDMI/DVI	Energy Saving	Off
Min Volume	0	Sub AMP Volume	6	Clone : TV to USB	
Max Volume	100	Sub AMP Mode	2	Clone : USB to TV	
Panel Button Lock	Unlock	Local Time	Manual	Pan Euro MHEG	OFF
Power On Source	TV	Time Format	12 Hour	Cloning Data Reset	OFF
Picture Menu Lock	OFF	PMOLED Test	Failure	Welcome Message	
Channel Editor		PMOLED Normal Dim.	3	Edit Welcome Message	
Music Mode AV	OFF	PMOLED Standby Dim.	2	DC Power Out	SV
Music Mode PC	OFF	Audio Loop In	OFF	<b>Mixed Channel Map</b>	<b>ON</b>
Music Mode Comp	OFF	Menu Display	ON	<b>Channel Auto Store</b>	
Music Mode Backlight	OFF	Hotel Logo	OFF	Dynamic SI	OFF

<Depending on model and region, some menu items may not exist>

### Simple Steps for channel mixing under Stand-alone Mode

Step	Broad Outline
1	Turn on 'Mixed Channel Map' in Hotel Option Menu
2	Operate 'Channel Auto Store' in Hotel Option Menu (Antenna Source : Air + Cable)
3	Enter 'Channel Editor' in Hotel Option Menu
4	Compile a table related to the final channel lists you want to have
5	Rearrange channels with <b>TOOLS</b> Button based on the table you compiled
6	Press <b>EXIT</b> or <b>RETURN</b> Button to exit.

<For better comprehension, please refer to the following details>

### Air & Cable Channels Mixing Manual

You can scan for Air and Cable channels by operating Channel Auto Store.

Automatically scanned channels may not have the user-desired channel numbers.

We suggest you compile a table related to the final channel lists you want to have like below.

1	BBC1
A 1	TF1(atv)
2	BBC2
A 2	FR1(atv)
A 3	FR2(atv)
4	Boxer
A 4	M6(atv)
70	Chnal+
900	Disney

<Scanned original Channel List>

Chnnel No.	Programme Name
1	BBC1
2	BBC2
A 3	FR1
4	BOXER
A 5	FR2
A 6	TF1
7	Disney
A 8	M6
9	Canal+

<User-desired Channel List>

Follow next steps to rearrange Air and Cable channels.

[To edit the channel numbers, enter 'Stand-alone mode' first.]

[Hotel Mode 'ON', Mixed Channel Map 'ON', Operate 'Channel Auto Store']



1. Rearrange Air and Cable Channels based on User-desired Channel List in 'Channel Editor'

- a. Check the largest channel number from the user-desired channel list.

Channel No.	Programme Name
1	BBC1
2	BBC2
A 3	FR1
4	BOXER
A 5	FR2
A 6	TF1
7	Disney
A 8	M6
9	Canal+

← Programme 'Canal+' has the largest channel number

- b. Locate cursor to a programme that you want to put it into the largest channel number.

- c. Press **TOOLS** key.

- d. Move cursor to **Edit Channel Number** and press **ENTER** key.

1	BBC1
A 1	TF1(atv)
2	BBC2
A 2	FR1(atv)
A 3	FR2(atv)
4	Boxer
A 4	M6(atv)
70	Chnal+
900	Disney

Edit channel Number  
 Edit channel Name

- e. Move the programme to the largest channel number by using up/down narrow keys or digit keys

- ~ When you try to change it to an existing channel number, below message will be displayed.  
 "CH.XX has already been used. Change to Ch.XX?".  
 If you select 'yes', they'll be swapped with each other.

Edit Channel Number


Channel	Name Canal+
▲ 9 ▼	

(0-9) Number   ▲ Adjust ▼   Enter   Return

- f. Check the second largest channel number from the user-desired channel list.

Channel No.	Programme Name
1	BBC1
2	BBC2
A 3	FR1
4	BOXER
A 5	FR2
A 6	TF1
7	Disney
A 8	M6
9	Canal+

← Programme 'M6' has the second largest channel number

- g. Locate cursor to the other programme that you want to put it into the second largest channel number.  
 h. Press **TOOLS** key.  
 i. Move cursor to **Edit Channel Number** and press **ENTER**  key.

1	BBC1
A 1	TF1(atv)
2	BBC2
A 2	FR1(atv)
A 3	FR2(atv)
4	Boxer
A 4	M6(atv)
9	Chnal+
900	Disney

Edit channel Number  
 Edit channel Name

- j. Move the programme to the second largest channel number by using up/down narrow keys or digit keys

**Edit Channel Number**

Channel	Name M6
▲ 8 ▼	

(0-9) Number   ↕ Adjust   ↵ Enter   ↵ Return

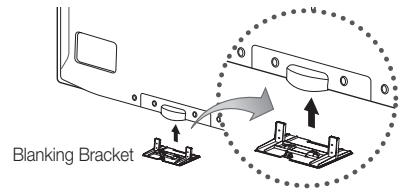
- k. Do this process again for all the other programmes.  
 Now you can see the mixed channel list like below.

1	BBC1
2	BBC2
A 3	FR1
4	Boxer
A 5	FR2
A 6	TF1
7	Disney
A 8	M6
9	Canal+

## Installing the Wall Mount

### Assembling the Blanking Bracket

When installing the TV onto a wall, attach the Blanking Bracket as shown.



### Installing the Wall Mount Kit

The wall mount kit (sold separately) allows you to mount the TV on the wall.

For detailed information on installing the wall mount, see the instructions provided with the wall mount. Contact a technician for assistance when installing the wall mount bracket. Samsung Electronics is not responsible for any damage to the product or injury to yourself or others if you select to install the TV on your own.

### Wall Mount Kit Specifications (VESA)

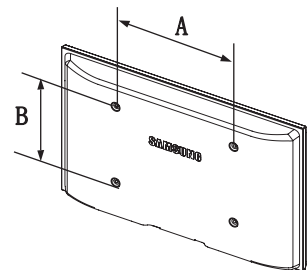
The wall mount kit is not supplied, but sold separately.

Install your wall mount on a solid wall perpendicular to the floor. When attaching to other building materials, please contact your nearest dealer. If installed on a ceiling or slanted wall, it may fall and result in severe personal injury.

#### NOTE

- Standard dimensions for wall mount kits are shown in the table below.
- When purchasing our wall mount kit, a detailed installation manual and all parts necessary for assembly are provided.
- Do not use screws that do not comply with the VESA standard screw specifications.
- Do not use screws that are longer than the standard dimension or do not comply with the VESA standard screw specifications. Screws that are too long may cause damage to the inside of the TV set.
- For wall mounts that do not comply with the VESA standard screw specifications, the length of the screws may differ depending on the wall mount specifications.
- Do not fasten the screws too strongly; this may damage the product or cause the product to fall, leading to personal injury. Samsung is not liable for these kinds of accidents.
- Samsung is not liable for product damage or personal injury when a non-VESA or non-specified wall mount is used or the consumer fails to follow the product installation instructions.
- Our 57" and 63" models do not comply with VESA Specifications. Therefore, you should use our dedicated wall mount kit for this model.
- Do not mount the TV at more than a 15 degree tilt.

Product Family	inches	VESA Spec. (A * B)	Standard Screw	Quantity
LCD-TV	19~22	75 X 75	M4	4
		100 X 100		
	23~29	200 X 100	M6	
	30~40	200 X 200		
	46~55	400 X 400	M8	
	57~65	600 X 400		
	70~80	800 X 400		
80~	1400 X 800			



Do not install your Wall Mount Kit while your TV is turned on. It may result in personal injury due to electric shock.

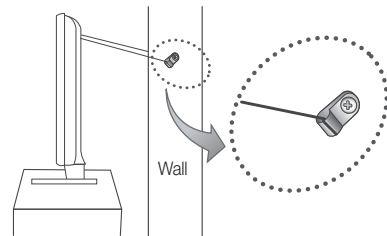
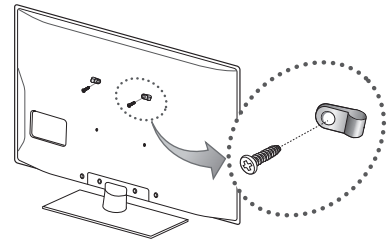
## Securing the TV to the Wall



**Caution:** Pulling, pushing, or climbing on the TV may cause the TV to fall. In particular, ensure your children do not hang over or destabilize the TV; doing so may cause the TV to tip over, causing serious injuries or death. Follow all safety precautions provided on the included Safety Flyer. For added stability, install the anti-fall device for safety purposes, as follows.

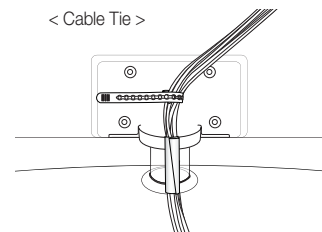
### To Avoid the TV from Falling

1. Put the screws into the clamps and firmly fasten them onto the wall.  
Confirm that the screws have been firmly installed onto the wall.
  - You may need additional material such as an anchor depending on the type of wall.
  - Since the necessary clamps, screws, and string are not supplied, please purchase these additionally.
2. Remove the screws from the back center of the TV, put the screws into the clamps, and then fasten the screws onto the TV again.
  - Screws may not be supplied with the product. In this case, please purchase the screws of the following specifications.
  - Screw Specifications
    - For a 19 ~ 29 inch : M4
    - For a 30 ~ 40 inch : M6
    - For a 46 ~ 80 inch : M8
3. Connect the clamps fixed onto the TV and the clamps fixed onto the wall with a strong cable and then tie the string tightly.
  - NOTE**
    - Install the TV near to the wall so that it does not fall backwards.
    - It is safe to connect the string so that the clamps fixed on the wall are equal to or lower than the clamps fixed on the TV.
    - Untie the string before moving the TV.
4. Verify all connections are properly secured. Periodically check connections for any sign of fatigue for failure. If you have any doubt about the security of your connections, contact a professional installer.




## Assembling the Cables

Enclose the cables in the Cable tie so that the cables are not visible through the transparent stand. Overly rigid or thick cables can damage input jacks for long term usage.



## Anti-theft Kensington Lock

The Kensington Lock is not supplied by Samsung. It is a device used to physically fix the system when using it in a public place. The appearance and locking method may differ from the illustration depending on the manufacturer. Refer to the manual provided with the Kensington Lock for additional information on proper use.

 Please find a "K" icon on the rear of the TV. A Kensington slot is beside the "K" icon.

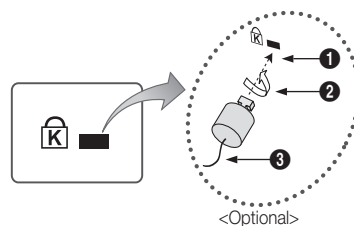
1. Insert the locking device into the Kensington slot **1** on the LCD TV and turn it as shown **2**.

2. Connect the Kensington Lock cable **3**.

3. Fix the Kensington Lock to a desk or a heavy stationary object.

 The locking device has to be purchased separately.

 The location of the Kensington slot may be different depending on the TV model.



## Specifications

Items		Specification	Comment
TV System		PAL, SECAM, DVB-T/C	
Audio out	Speaker out	19inch / 22inch : 3W x 2 26inch : 5W x 2 32inch / 37inch / 40inch : 10W x 2	
	Variable Audio	4W mono 8 ohm SPK'	RCA Jack output BTL Sound output
	Audio out	500mVrms	Phone Jack, Monitor out
DC out	5V out	Max 2.5A	Initial output Voltage
	12V out	Max 1.5A	Change output voltage
Input	Component	Y, Pb, Pr, Audio-L/R	
	PC	D-sub, Audio-L/R	
	A/V	Audio Video Jack	
	EXT	Scart Jack	
	HDMI	Compatible with the HDMI Specifications	
Data	Antenna	75 ohm Unbalanced, Din Jack	VHF/UHF/CATV
	DATA	RJ-12	
	RJP	RS232	Jack Pack Only, TeleAdapt RJP Only
Operating temperature		10°C ~ 40°C (50°F ~ 104°F)	
Operating Humidity		10% ~ 80%	non-condensing
Storage Temperature		-20°C ~ 45°C (-4°F ~ 113°F)	
Storage Humidity		5% ~ 95%	non-condensing

 Design and specifications are subject to change without prior notice.

 For information about power supply, and more about power consumption, refer to the label attached to the product.



**Contact SAMSUNG WORLDWIDE**

If you have any questions or comments relating to Samsung products, please contact the SAMSUNG customer care center.

Country	Customer Care Centre ☎
AUSTRIA	800-112233
FINLAND	0771-400002
FRANCE	0825-022062
GERMANY	01805-471101
HUNGARY	0640-985985
ITALIA	800-194194
NETHERLANDS	015-2197000
POLAND	0-801-B2BSAM (222726)
PORTUGAL	808-B2BSAM
SPAIN	0902024-010
UNITED KINGDOM	+44 (0) 845 8414141
SOUTH AFRICA	0860-SAMSUNG (726-7864)
U.A.E	800-SAMSUNG (726-7864) 8000-4726

## Free Manuals Download Website

<http://myh66.com>

<http://usermanuals.us>

<http://www.somanuals.com>

<http://www.4manuals.cc>

<http://www.manual-lib.com>

<http://www.404manual.com>

<http://www.luxmanual.com>

<http://aubethermostatmanual.com>

Golf course search by state

<http://golfingnear.com>

Email search by domain

<http://emailbydomain.com>

Auto manuals search

<http://auto.somanuals.com>

TV manuals search

<http://tv.somanuals.com>