

SAMSUNG



## Mass Storage Device Support

- You can use the built-in hard drive to store your entire music library, plus use it as an external drive for your PC to store other data files.

## MP3, WMA, Audio ASF and Ogg Playback

- Your player supports playback of MP3, WMA, Audio ASF and Ogg.

## USB Host Function Support

- You can freely transfer data such as music and image files without a PC by directly connecting digital devices such as a digital camera, MP3 player, etc. to the player.

## Video Playback Function

- You can view video files after downloading using Multimedia Studio.

## Image & Text Viewer Function

- You can view JPEG files and TXT file text.

## Direct MP3 Recording

- You can convert music from CDs, cassettes, and radio into MP3 files without a PC.

## USB 2.0 High Speed Data Transfer

### DNSe Surround Sound

- The 3D surround feature adds spaciousness to the sound.

### 1.8-inch Color TFT LCD

- You can enjoy high quality image & video files.

### Game Support

- You can enjoy games such as Tetris, Omok and Othello.

### Built-in Rechargeable Li-ion Battery

- The built-in rechargeable lithium battery provides up to 25 hours of music and 5 hours and 30 minutes of video files.

### Playback Speed Control Function

- You can adjust the playback speed of music or voice files.

### Upgradable

- You can upgrade the built-in programs when available.  
Please check the Samsung home page ([www.samsung.com](http://www.samsung.com)) for upgrades.

# Contents

## Chapter 1 Preparations

Features.....	2
Safety Instructions .....	6
Battery Charger Safety .....	8
Charging the Battery .....	9
Components.....	10
Location of Controls .....	11
Display .....	12

## Chapter 2 Connection to Computer

Connecting the player to your PC .....	13
● Installing Software .....	13
● Connecting the player to your PC with a USB cable .....	15
Using Windows Media Player 10.....	16
● Downloading Music Files .....	16
Using the player as a Storage Device .....	18
Uploading Recorded Files .....	19
Installing Multimedia Studio .....	20
● Installing Software .....	20
Using Multimedia Studio .....	22
● Editing Images .....	22
● Sending images .....	23
● Sending Videos .....	25
● Capturing Video .....	27
● To View Help on Multimedia Studio.....	30

## Chapter 3 Using Your Player

Playing Music .....	31
● Playing Music .....	31
● Pausing Music .....	31
● Adjusting Volume .....	31
Hold Feature .....	32
Loop Repeating .....	32
● Starting Point .....	32
● Ending Point .....	32
Searching for Music/Voice Files .....	33
● To Search for Specific Parts During Play .....	33
● To Change Tracks During Play.....	33
● To Change Tracks when Stopped .....	33
Setting Main Functions in Music Mode.....	34
● Add to Favorites .....	34
● EQ .....	34
● DNSe .....	35
● Play Mode .....	35
● Play Speed .....	36
● File Info .....	36
MENU Options .....	37
Recording Voice .....	38
Recording MP3s .....	39
Setting Main Functions in Navigation .....	40
● Go to Top .....	41
● Scroll Type .....	41
● Add to Favorites .....	42
● Delete File .....	42
Viewing Text.....	43

## || Chapter 3 Using Your Player

Setting Main Functions in Text.....	44
● Bookmark .....	44
● Go to page.....	45
● Page Scroll Type .....	46
● Auto Scroll .....	46
Viewing Image Files.....	47
Viewing Video Files .....	48
Using USB Host.....	49
● Connecting an External Device.....	49
● Transferring Files from External Device to the Player .....	50
Using USB Host.....	51
● YH-J70J USB HOST Compatible .....	52
Playing Games .....	53
● Clear Screen .....	53
● Othello .....	54
● Omok .....	55
● Tetris .....	56
● Chips .....	57
Setting the Advanced Functions .....	58
Screen Display Settings.....	59
● Scroll Speed .....	59
● Backlight .....	59
● Lcd Off Time .....	60
● Text Set.....	60
● Graphic EQ.....	60
Sound Effect Settings .....	61
● 3D User Set.....	61
● Street Mode.....	61
● Fade In .....	61
● Auto EQ .....	62
● User EQ Set .....	62

Time/Schedule Settings.....	63
● Memo.....	63
● Calendar .....	64
● Sleep .....	65
● Date/Time .....	65
Recording Settings .....	66
● Bit Rate.....	66
● Auto Sync .....	66
System Settings .....	67
● Languages.....	67
● File Language.....	67
● Resume .....	68
● PC Connect Mode .....	68
● Auto Off Time.....	69
● Sort .....	69
● Default Set.....	69
● About .....	69
To Upgrade Firmware .....	70

## || Chapter 4 Appendix

MENU Table.....	72
-----------------	----

## || Chapter 5 Customer Support

Troubleshooting .....	73
Specifications.....	75
Safety Information.....	76
Warranty.....	79

# Safety Instructions

Please read and understand all the instructions to avoid injury to yourself and damage to the device



Do not expose to extreme temperatures (above 95°F or below 23°F). Do not expose to moisture.



Do not apply excessive pressure on the device.



Do not let any foreign matter spill into the device.



Do not place heavy objects on top of the device.



Do not expose to chemicals such as benzene and thinners.



Do not touch the charger with wet hands.



Do not expose to direct sunlight or heat sources.



Do not store in dusty areas.



Do not try to disassemble and repair the device yourself.



Do not use the unit near any appliance that generates a strong magnetic field.

\* Please be aware that we disclaim all responsibility for damage from loss of saved or recorded data due to hardware failure. Download from [www.Somanuals.com](http://www.Somanuals.com). All Manuals Search And Download.

## Earphones

### Follow Traffic Safety Instructions

- Do not use the earphones while driving an automobile or riding a bicycle.  
It's not only dangerous, but also against the law.
- To avoid an accident, do not turn up the volume of the earphones too high while walking.

### Protect your ears

- Do not turn up the volume too high. Doctors warn against prolonged exposure to high volume.
- Stop using the device or turn the volume down if you have ringing in your ears.
- Take care so that the earphone cable is not caught by your arm or other objects while walking or exercising.

## Ambient operating conditions

- Ambient temperature : 5°C ~ 35°C (41°F ~ 95°F)
- Humidity : 10 ~ 75%

## Environmental Information

- Follow local guidelines for waste disposal when discarding packages, batteries, and old electronic appliances.
- Your player is packaged with cardboard, polyethylene etc., and does not use any unnecessary materials.

# Battery Charger Safety



## CAUTION

RISK OF ELECTRIC SHOCK. DO NOT OPEN



The uninsulated parts inside the charger could cause electric shock.

For your safety, do not open the case of the charger.



Read this User Manual to prevent any problems that may occur while using the charger.

## Warning

- Use the charger away from water sources to avoid fire or electric shock.

## Caution

- To avoid electric shock, use the charger only with a power outlet that matches the shape of the converter's plug.
- Make sure that the charger's plug is inserted all the way into the outlet.



# Charging the Battery

A charger is supplied with your player.

## Plug the charger into a wall outlet.

- \* When recharging is complete, "Charge Completed" will be displayed on the screen.
- \* To recharge by connecting the USB cable, select [Settings] → [System] → [PC Connect Mode] → [Charge] in the menu screen. To charge through the USB cable, the PC has to be turned on. If the PC goes into power saving mode, the battery will not be charged.
- \* Charging the battery through USB cable takes approximate 6 hours, while charging the battery with the charger takes approximate 4 hours.



## Caution

- To avoid the risk of fire, do not charge longer than 12 hours.
- Do not plug several devices into the same outlet.
- Do not use a charger that is defective.
- When using the rechargeable battery for the first time or after several months of non-use, fully charge it first.
- Overcharging will reduce the battery life.
- The rechargeable battery is a consumable item and its capacity will decrease gradually.
- To prolong the life of your battery, use the fully charged battery until it is completely discharged, and then fully charge it again before use.
- Please be aware that we disclaim all responsibility for damage from loss of saved or recorded data due to breakdown, repair or other causes.  
A fire or electric shock may result.
- Do not touch the charger with wet hands.

# Components



Player



Earphones

(AH30-00084D:WHITE, AH30-00085D:BLACK)



Line-In Cable

(AH39-00488B)



USB Host Adaptor

(AH39-00784A)



Charger

(AH44-00100B)



Installation CD

(AH80-00133A)



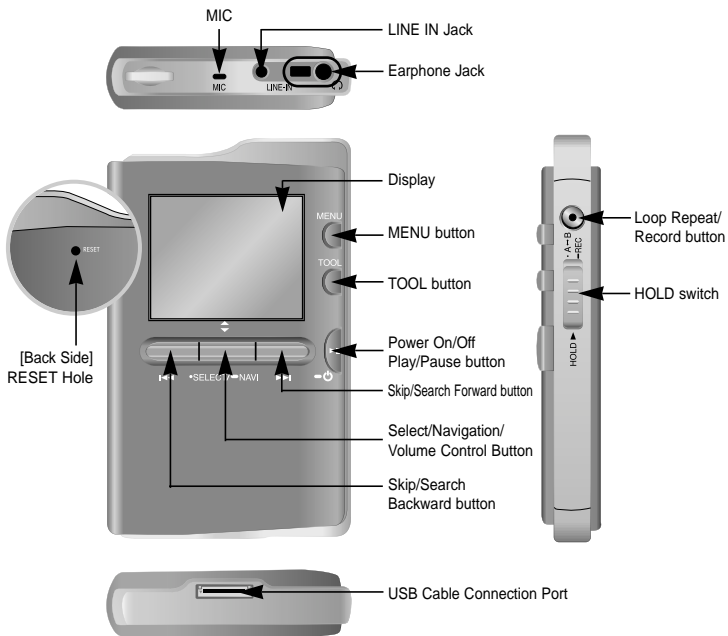
USB CABLE

(AH39-00783A)

Model	YH-J70J LB/LW
Built-in memory	30GB

- The capacity of the useable built-in memory is less than indicated as the internal firmware uses a part of the memory as well.
- The appearance of the accessories shown is subject to change for product improvement without prior notice.

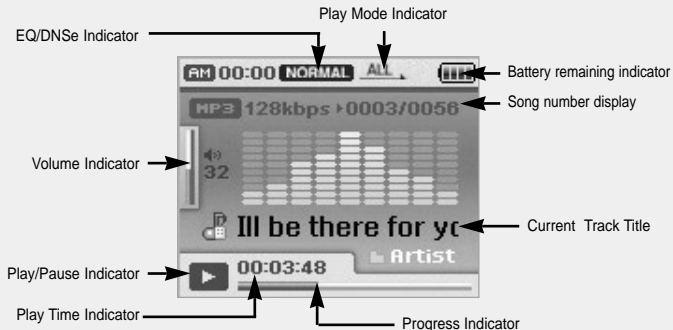
# Location of Controls



## Note

- Reset the player by pressing the RESET hole using a pointed object such as a safety clip.  
Download from [www.Somanuals.com](http://www.Somanuals.com). All Manuals Search And Download.

# Display



## Note

- The screen pictures are for illustration purposes only. The actual screen may differ.

# Connecting the player to your PC

## □ System Requirements.

The PC system must meet the following specifications:

- Pentium 300MHz or greater
- Windows XP Service Pack 1 or greater.
- Windows Media Player 10.0 or higher
- Internet Explorer 6.0 or higher
- 100MB of available hard disk space
- CD-ROM drive  
(double speed or greater)
- USB port (2.0) supported
- DirectX 9.0 or above.



## Note

- Log into your PC as an administrator (Main User) and install the supplied software (Media / Multimedia Studio) for Windows XP.  
You can change account information by selecting [Start] → [Control Panel] → [User Account] from the taskbar of your PC.

Install Samsung Media Studio before connecting the player to PC.

## I Installing Software

I Insert the Installation CD into CD-ROM drive.

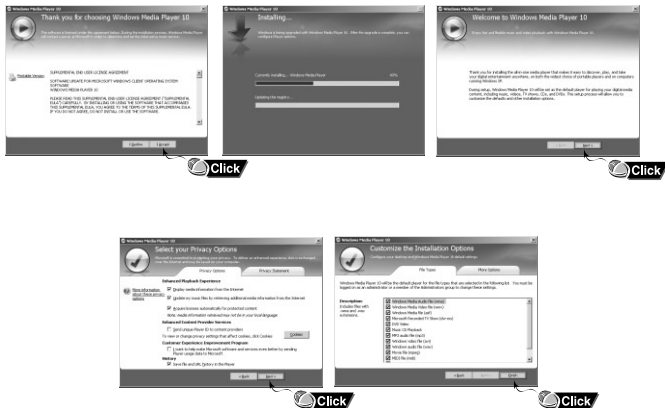
The picture shown below appears.

Select [Install Windows Media Player 10].



# Connecting the player to your PC

2 Follow the instructions in the window to complete the installation.

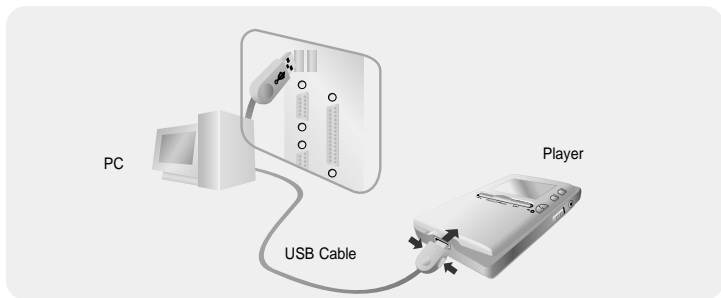


## Connecting the player to your PC with a USB cable

1 Connect the USB cable to the USB port of the computer.

2 Connect the other end of the USB cable to the USB cable connection port located at the bottom of the player.

- "Samsung YH-J70J" will appear in the [Device Manager] on your computer.



# Using Windows Media Player 10

- You can download MP3 and WMA files using Windows Media Player 10.
- The files downloaded from WMP10 to the player, will be automatically saved in Music folder.

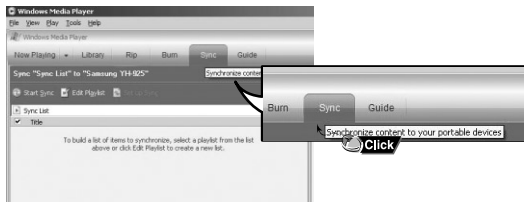
## 1 Downloading Music Files

1 Connect the player to your PC.

2 Run Windows Media Player10.

- Select **[Start]** → **[Programs]** → **[Windows Media Player]** in the desktop.

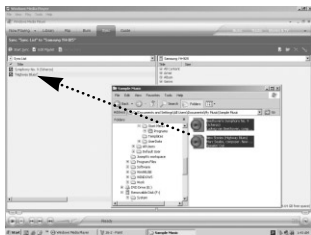
3 Select **[Sync]** at the top of the screen.



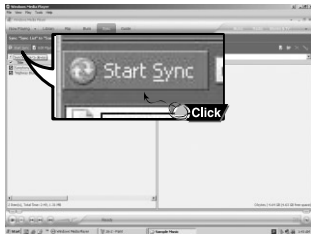


# Using Windows Media Player 10

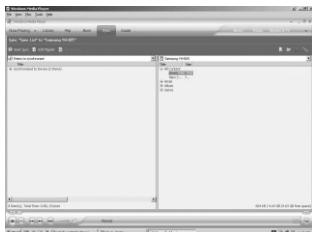
- 4 When the **[Sync]** window appears, select the file you want to transfer to the player, drag and drop it to the left **[Sync List]** window.



- 5 Make sure the music files you want to download are checked, and then press **[Start Sync]** at the top of the screen. - [Synchronized to Device] message will appear on the left window. The downloaded files will appear in the right window under Music folder.



- 6 You can check the transferred file in the right window.



# Using the player as a Storage Device

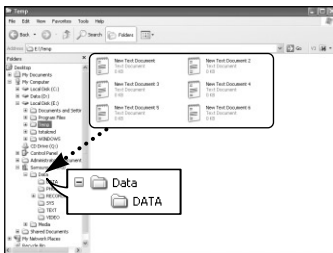
- You can easily download data files to the player using Windows Explorer and use it as a storage device to store data files.
- You need to select PC connection mode before using the storage device.  
Press the MENU button and select [Settings] → [PC Connect Mode] → [MTP] from the menu.

1 Connect the player to PC.

2 Right click on the Start button, then choose Explore to Open Windows Explorer on PC.

- [Samsung YH-J70J] is displayed in Windows Explorer.

3 Select the data file to save and drag-and-drop it into [Samsung YH-J70J] → [Data]



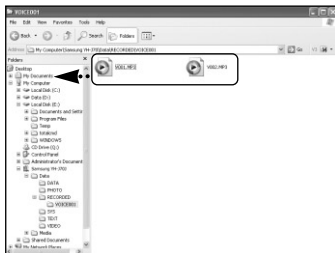
## Caution

- Disconnecting the USB cable during displaying "Updating" message may cause malfunction of the player.
- You can not upload a file over 400MB from the player to PC.

# Uploading Recorded Files

- You can upload files recorded in the player to your PC.

- 1 Connect the player to PC.
- 2 Right click on the Start button, then choose Explore to Open Windows Explorer on PC.
- 3 Select [**Samsung YH-J70J**] → [**Data**] → [**RECORDED**] from Windows Explorer.
  - The recorded files are displayed.
- 4 Drag the recorded files to a desired folder on your PC.  
The selected file is transferred to the specified folder of the PC.



# Installing Multimedia Studio

- Multimedia Studio is a program that supports image editing, video playback and format conversion, and multimedia album creation.

## I Installing Multimedia Studio Software

**I** Insert the installation CD into the CD-ROM drive.  
Select [Install Multimedia Studio].

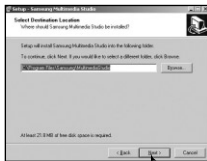


**2** Select language



# Installing Multimedia Studio |

3 Follow the instructions in the window to complete the installation.



Continued...

# Using Multimedia Studio

- Run Multimedia Studio in the Desktop.

## Editing Images

1 Select the folder on your PC containing images from the directory window at the upper left-hand section of Multimedia Studio.

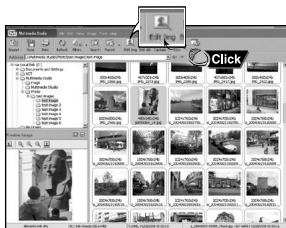
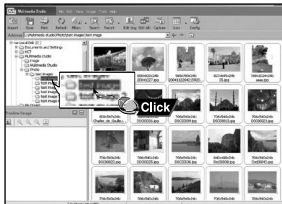
- The saved files will be displayed in the file list window to the right.

2 Select the image to edit.

- The selected image will be displayed in the [Preview image] window.

3 Press the [Edit Img] button.

- From the [Picture editor] window, you can perform functions like editing wallpaper images, editing layers, inserting clip art, making frames and other various editing functions.



### Note

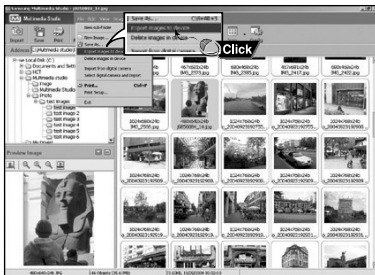
- Refer to Multimedia Studio [Help] (see page 30) for more detailed information.  
Download from [Www.Somanuals.com](http://www.Somanuals.com). All Manuals Search And Download.

# Using Multimedia Studio

Select PC connection mode before transferring image files or video files through Multimedia Studio. Press the MENU button and select [Settings] → [PC Connect Mode] → [MTP] from the menu.

## Sending images

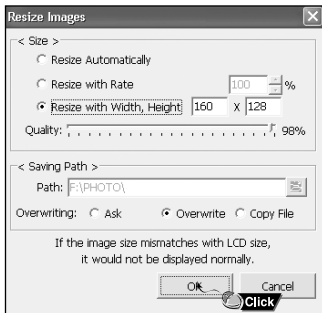
- 1 Connect the player to PC.
- 2 Select the image(s) to send to the player.
- 3 Select **[File]** → **[Export images to device]** at the top of Multimedia Studio.
- 4 Select Samsung YH-J70J from the [Select device] screen, and then press the **[OK]** button.
- 5 Select the folder to save from the folder selection screen, and then press the **[OK]** button.



# Using Multimedia Studio

6 Set the size and path of the image at the **[Resize images]** window and then click the **[OK]** button.

- The image will be sent to the YH-J70J player.
- The sent image can be viewed from **[Photo/Video]** → **[Photo]** on the player.
- The optimal image size for viewing on the unit is 160 x 128. Please adjust the image size if the image does not display correctly on the player.



## Note

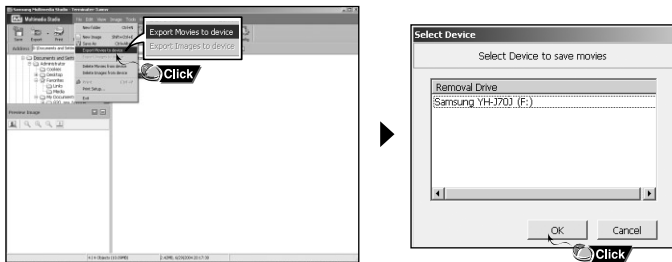
- Path refers to the location or folder where the converted image(s) will be saved to on your PC.
- Image files saved in the player can be deleted by selecting **[File]** → **[Delete images from device]**.
- Refer to **[Help]** for more detailed information



Select PC connection mode before transferring image files or video files through Multimedia Studio. Press the MENU button and select [Settings] → [PC Connect Mode] → [MTP] from the menu.

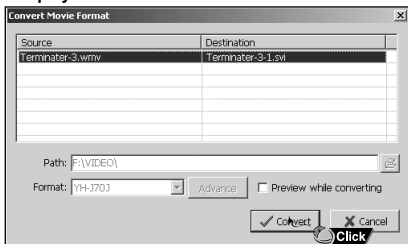
## Sending Videos

- 1 Connect the player to PC.
- 2 Select the video(s) to send to the player.
- 3 Select **[File]** → **[Export videos to device]** at the top of Multimedia Studio.
- 4 Select Samsung YH-J70J from the [Select device] screen, and then press the **[OK]** button.



# Using Multimedia Studio

- 5 Select the folder to save from the folder selection screen, and then press the [OK] button.
- 6 Press the **[Convert]** button when conversion screen appears.
  - The converted file is transferred in svi format.
  - The transferred video file can be viewed at selecting Menu → **[Photo/Video]** → **[Video]** on the player.



- ▲ For converting and transferring a video file, you have to check the following:
  1. Check if Direct X 9.0 or higher has been installed in the PC.
  2. Check if Windows Media Player 9.0 or higher has been installed in the PC.
  3. Check if Codec Pack has been installed in the PC.

## Note

- Video files saved in the player can be deleted by selecting [File] → [Delete videos from device].
- If you have a video file (eg. Divx, Xvid, .avi, .mpg etc.) on your computer and you cannot view it, you will not be able to convert it to an svi and play it on the YH-J70J. You'll first need to find the proper codec online, then install it in your computer. Once the codec is installed, you can then convert it to an .svi file using Multimedia Studio and transfer it to your player.

# Using Multimedia Studio

The Multimedia Studio software allows you to capture a still frame from a video file and save it as a picture on your PC, then transfer it to the YH-J70J (see page 23).

## Capturing Video

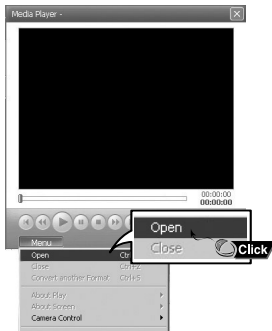
1 Press the **[Capture]** button at the top of the Multimedia Studio menu.

- The Media Player screen will be displayed.



2 Click **[Menu]** → **[Open]** on your PC and select the video to play.

- The selected video will be played.



# Using Multimedia Studio

3 Press the ① **[Capture]** button and then press the ② **[Capture]** button when the image you want to capture appears.

- The selected image will be captured.



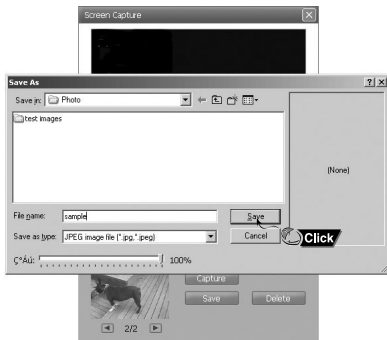
4 Press the [Save] button.

- Save This captured image: saves the currently selected image.
- Save All captured images: saves all captured images.



# Using Multimedia Studio

- 5 Select the directory to save to from the [Save As] window and press the [Save] button.
- The selected image will be saved.



## Note

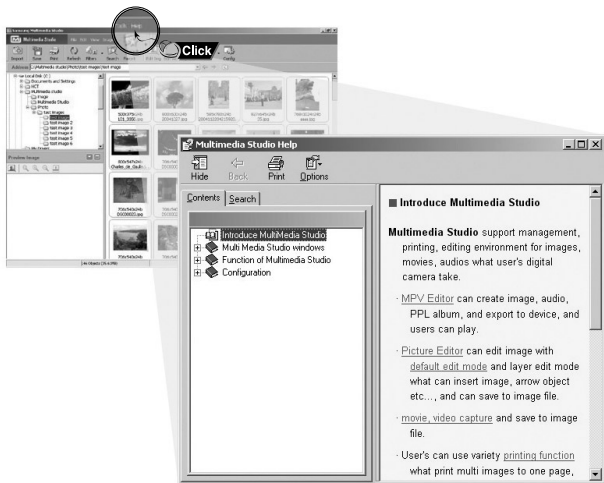
- Video playback and conversion codecs are not provided. It is recommended that you use codecs of latest versions.
- Refer to [Help] for more detailed information.

# Using Multimedia Studio

## To View Help on Multimedia Studio

Run Multimedia Studio and press the Help button at the top of the screen.

- Help will be displayed.



Make sure the player is fully charged and the earphones are connected.

- Power On: Press and hold the ►|| button to turn on the power.
- Power Off: Press and hold the ►|| button to turn off the power.

## Playing Music

Press and hold the ►|| button

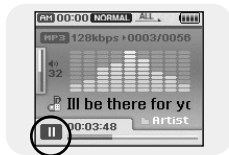
- Playback starts automatically.



## Pausing Music

Press the ►|| button to pause playback.

- While in Pause mode, briefly press ►|| again to resume playback.



## Adjusting Volume

Adjust volume by moving the SELECT button up and down.


- The volume can be adjusted in increments between 00(MIN) and 60(MAX).

# Hold Feature

Use the Hold feature to lock and disable all buttons.

## Hold Function of the Player

**Activate**  **on the player.**

- All buttons on the player will be disabled.
- When you activate the HOLD switch, a "  " appears on the display.

## Loop Repeating

### Starting Point

While playing a music file, press the A↔B button at the beginning of the loop you want to set.

- A↔ appears in the display.



### Ending Point

Press the A↔B button shortly at the point you wish to end Loop Repeat.

- A↔B appears in the display.
- The loop is played repeatedly.



Press the A↔B button briefly to cancel the loop.

Download from [Www.Somanuals.com](http://www.Somanuals.com). All Manuals Search And Download.



## To Search for Specific Parts During Play

- Press and hold the **⏮, ⏭** button during playback to search for the part you want to listen to.
- Release the button to resume play normally.

## To Change Tracks During Play

- Press the **⏭** button briefly during playback to play the next track.
- Press the **⏮** button briefly within 5 seconds after playback starts to move to and play the previous track. Press the **⏮** button briefly after 5 seconds to play the current track from the beginning.

## To Change Tracks when Stopped

- Press the **⏮, ⏭** button in stop/pause mode to move to the previous/next track.

### Note

- VBR(Variable Bit Rate) file: A file that constantly changes the compression rate according to the type of sounds, such as their pitch, in the file.
- When playing a VBR file, you cannot move to and play the previous track even if you press the **⏮** button within 5 seconds after playback starts.
- Files that were downloaded in MP2 or MP1 and had their file extension changed to MP3 may not play.

# Setting Main Functions in Music Mode

- You can move and select using the SELECT button.
- Press the ◀◀ button to move to the previous screen.

## Add to Favorites

- You can easily find and listen to your favorite music by adding it to the Favorites.

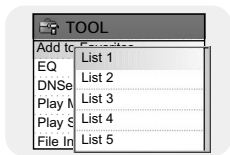
**1** Press the TOOL button in music mode.

- Music Tool screen appears.

**2** Push the NAVI button Up/Down to select [Add to Favorites], then press the SELECT button.

**3** Push the NAVI button Up/Down to select the list you want to save to (1-10), then press the SELECT button.

- The selected file will be added to the list.
- 10 Playlists can be selected.
- Added files can be found at [Navigation] → [Playlist] → [Favorites].



## EQ

- You can adjust the sound mode to your preference in EQ mode.

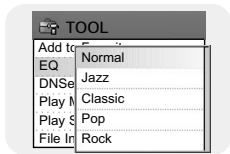
**1** Press the TOOL button in music mode.

- Music Tool screen appears.

**2** Push the NAVI button Up/Down to select [EQ], then press the SELECT button.

**3** Push the NAVI button Up/Down to select the desired sound effect mode, then press the SELECT button.

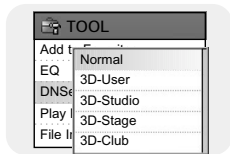
- Normal → Jazz → Classic → Pop → Rock → Bass Boost → Bass Cut → R&B → Club Dance → House → High Boost → High Cut → Loud → Ballad → Strings → Vintage → Vocal Boost → Bluesy → User EQ
  - When using User EQ, the desired sound effects can be set from [Settings] → [Sound Effect] → [User EQ Set].
- Download from [www.Somanuals.com](http://www.Somanuals.com). All Manuals Search And Download.



# Setting Main Functions in Music Mode

## 1 DNSe(Digital Natural Sound Engine)

- 1 Press the TOOL button in music mode.
  - Music Tool screen appears.
- 2 Push the NAVI button Up/Down to select [DNSe], then press the SELECT button.
- 3 Push the NAVI button Up/Down to select the desired DNSe mode, then press the SELECT button.
  - Normal → 3D-User → 3D-Studio → 3D-Stage → 3D-Club

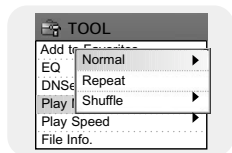


### Note

- DNSe is a sound effect function for MP3 player developed by Samsung and consists of 3D, Bass Enhance and Street modes. The 3D adds a 3 dimensional sound effect to the music, the Bass Enhance reinforces the bass and the Street mode provides an automatic volume control function that amplifies quiet sounds in a noisy environment such as a street.

## 1 Play Mode

- 1 Press the TOOL button in music mode.
  - Music Tool screen appears.
- 2 Push the NAVI button Up/Down to select [Play Mode], then press the SELECT button.
- 3 Push the NAVI button Up/Down to select the desired Play Mode, then press the SELECT button.
  - Normal : Press the SELECT button at [Normal].
    - Folder: To play the current folder one time. - All: To play all the files in order one time.
  - Repeat: Press the SELECT button at [Repeat].
    - One : To repeat one file. - Folder : To repeat the current folder. - All : To repeat all files.
  - Shuffle : Press the SELECT button at [Shuffle].
    - Folder: To play files in the folder at random. - All : To play all files at random.



# Setting Main Functions in Music Mode

## I Play Speed

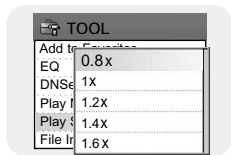
1 Press the TOOL button in music mode.

- Music Tool screen appears.

2 Push the NAVI button Up/Down to select [Play Speed], then press the SELECT button.

3 Push the NAVI button Up/Down to select the desired Play Speed, then press the SELECT button.

- 0.8x → 1x → 1.2x → 1.4x → 1.6x.
- The larger the number, the faster the speed of play, and the smaller the number, the slower the speed of play.



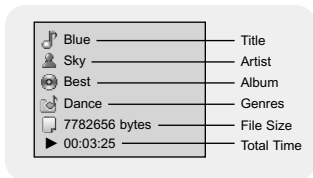
## I File Info.

1 Press the TOOL button while the music is playing or has stopped.

- Music Tool screen appears.

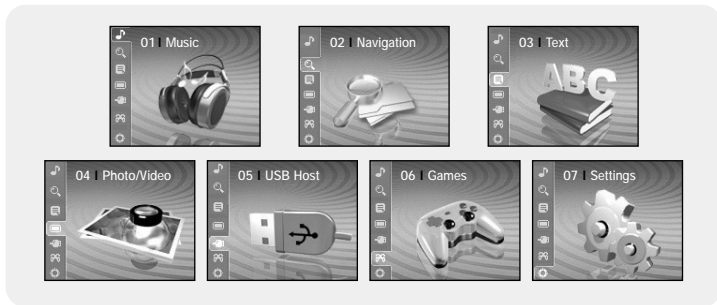
2 Push the NAVI button Up/Down to select [File Info.], then press the SELECT button.

- Information on file currently playing/paused is displayed.



Press the MENU button to switch to Menu mode.

Use the SELECT button to select the menu item you want, and then briefly press the SELECT button.



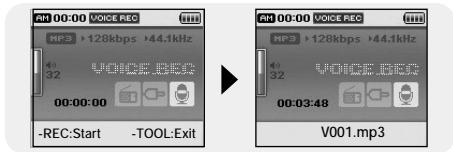
- Music : To display the song currently playing.
- Navigation : To move to Navigation Mode and browse files and folders.
- Text : To read text files
- Photo/Video : To view saved image files or videos
- USB Host : To transfer files saved in the unit to external devices or transfer files saved in external devices to the unit.
- Games : To play games.
- Settings : To set functions.

## Note

- In Menu mode, press the  button to move to the previous screen.

# Recording Voice

- 1 Press and hold the REC button.
  - Recording screen appears.
- 2 Press the REC button to start voice recording.
- 3 Press the REC button again.
  - Recording stops and the file is created.
  - Files are recorded and renamed V001.mp3, V002.mp3, and so on.
  - The created MP3 files are saved in [Navigation] → [File Search] → [RECORDED] → [VOICE001] folder. Up to 999 files can be saved in a record folder.
  - Press the ►|| button to play the recorded file.



## Note

- Even if you set the sampling and bit rates higher, voice recording will default to 44.1KHz.

**1** Connect the Audio Output port on the external audio source (or the Line Out port) to the LINE IN port on the player with the Line cable.

- Press the play button on the external device to play the music to record.

**2** Press and hold the REC button.

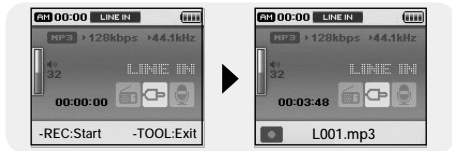
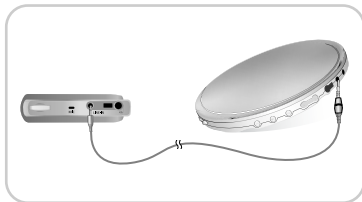
- Recording screen appears.

**3** Press the REC button.

- Recording will start.

**4** Press the REC button again.

- Recording stops and a file is created.
- Files are recorded and renamed L001.mp3, L002.mp3, and so on.
- MP3 files are added to **[Navigation]** → **[File Search]** → **[RECORDED]** → **[LINE001]**.  
Up to 999 files can be saved in a record folder.
- Press the **▶||** button to play the recorded file.



## Note

- Do not disconnect the Line cable during Recording.
- If the battery is not sufficiently charged, the player will not completely record the file.
- Adjust the volume of the external audio source to a suitable level before recording.

If the volume level is too high, the sound quality will be poor.  
Download from [www.Softpedia.com](http://www.Softpedia.com)! All MP3s Search And Download.

# Setting Main Functions in Navigation

- You can move and select using the SELECT button.
- Press the **◀◀** button to move to the previous screen.

**1** Press and hold the SELECT button to move to Navigation mode, or press the MENU button to move to Menu and then select Navigation.

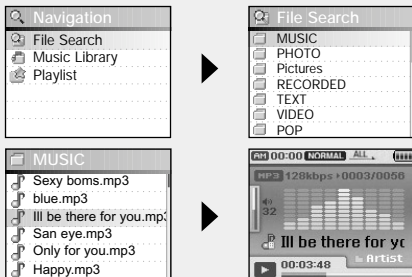
- File Search : You can search for a file from MUSIC, PHOTO, Pictures, TEXT or VIDEO folder. Image files transferred through Multimedia Studio are saved in Photo folder, while image files transferred through WMP10 are saved in Pictures folder.
- Music Library : You can search for a music file by Artist, Album, Genre and Track.
- Playlist : You can search for a file specified as a Favorite in the player or PC Playlist transmitted through Windows Media Player 10.

**2** Select the file or folder that you want to play.

- **◀◀** : To move to a higher-level folder.
- **▶▶** : To move to a lower-level folder.
- **▲, ▼** : To move to a file or folder in the same directory.
- SELECT : To move to the next folder down.

**3** Press the SELECT button.

- The selected file will be played.





# Setting Main Functions in Navigation

- You can move and select using the SELECT button.
- Press the **◀◀** button to move to the previous screen.

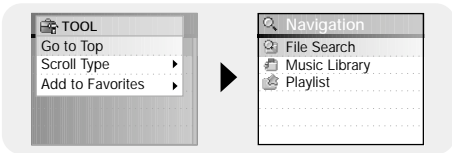
## Go to Top

**1** Press the TOOL button in Navigation Mode.

- Navigation Tool screen appears.

**2** Push the NAVI button Up/Down to select [Go to Top], then press the SELECT button.

- Move to the File Navigation screen.



## Scroll Type

**1** Move to the music file in Navigation Mode, then press the TOOL button.

- Navigation Tool screen appears.

**2** Push the NAVI button Up/Down to select [Scroll Type], then press the SELECT button.

**3** Push the NAVI button Up/Down to select [Line Up/Down] or [Page Up/Down], then press the SELECT button.

- Line Up/Down: Slide the SELECT button up or down to move line by line from the file search display.
  - Page Up/Down: Slide the SELECT button up or down to move by page from the file search display.
- Download from [www.Somanuals.com](http://www.Somanuals.com). All Manuals Search And Download.

# Setting Main Functions in Navigation

## Add to Favorites

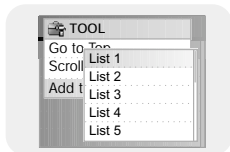
**1** In the Navigation mode, select the file you want to add.  
Press the TOOL button to bring up the TOOL menu.

- Navigation Tool screen appears.

**2** Push the NAVI button Up/Down to select [Add to Favorites], then press the SELECT button.

**3** Push the NAVI button Up/Down to select the list you want to save to (1-10), then press the SELECT button.

- The selected file will be added to the list.
- 10 Playlists can be selected.
- Added files can be found at [Navigation] → [Playlist] → [Favorites].



## Delete File

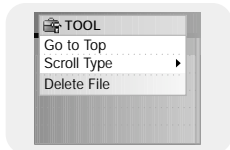
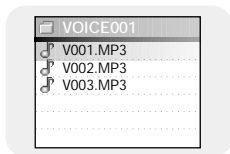
- Recorded files can be deleted in Navigation Mode.  
Other files can be deleted using Media Studio.

**1** In the Navigation mode, select the file you want to delete. Press the TOOL button to bring up the TOOL menu.

- Navigation Tool screen appears.

**2** Push the NAVI button Up/Down to select [Delete File], then press the SELECT button.

- The selected file will be deleted.



- Text Viewer allows you to read text files that were created on your PC. Text files must have a .txt extension to be viewed by Text Viewer.
- You can select a text file to view while listening to music.

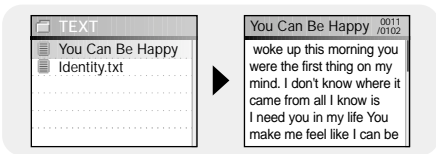
**1** Press the MENU button to move to menu, then select Text.

- Navigation screen appears.



**2** Move to the text you want to read, then press the SELECT button.

- The selected text file will be displayed.
  - ▲, ▼ : Volume Control.
  - ◀, ▶ : Move to Previous/Next Page.
  - Text File Selection: Press and hold the SELECT button to move to navigation while a music file is playing. Move to the desired text file, and then press the SELECT button.



## Note

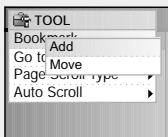
- Text files with size of 500KB or above cannot be read.

# Setting Main Functions in Text

- You can move and select using the SELECT button.
- Press the **◀◀** button to move to the previous screen.

## Bookmark

- 1 Press the TOOL button while viewing reading text.
  - Text Tool screen appears.
- 2 Push the NAVI button Up/Down to select [Bookmark], then press the SELECT button.
- 3 Push the NAVI button Up/Down to select [Add] or [Move], then press the SELECT button.
  - Add : Bookmark is created on the current page.
  - Move : Move to a bookmark within the text file.



### Note

- You can create 1 bookmark within a file or 5 bookmarks within a directory.

## Go to page

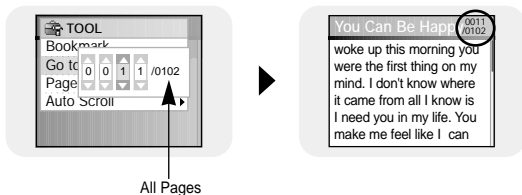
1 Press the TOOL button while viewing text.

- Text Tool screen appears.

2 Push the NAVI button Up/Down to select [Go to page], then press the SELECT button.

3 To select the desired page, press the ◀, ▶ buttons to select the Input Box. Press the NAVI up or down button to select a number in the chosen Input Box (this sets the page number). Press SELECT and that page will be accessed. For example, to select page 47, select 0047 in the Input Boxes.

- Move to the selected page.



# Setting Main Functions in Text

## Page Scroll Type

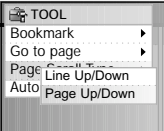
1 Press the TOOL button while viewing text.

- Text Tool screen appears.

2 Push the NAVI button Up/Down to select [Page Scroll Type], then press the SELECT button.

3 Push the NAVI button Up/Down to select the desired scroll settings, then press the SELECT button.

- Line Up/Down : Pressing the **◀◀, ▶▶** button moves the text by 1 line.
- Page Up/Down : Pressing the **◀◀, ▶▶** button moves the text by 1 page.



## Auto Scroll

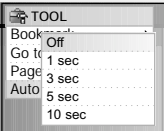
1 Press the TOOL button while viewing text.

- Text Tool screen appears.

2 Push the NAVI button Up/Down to select [Auto Scroll], then press the SELECT button.

3 Push the NAVI button Up/Down to select the desired Auto scroll time, then press the SELECT button.

- Off, 1, 3, 5 or 10 seconds is available.
- The page automatically scrolls after the time you set elapses.



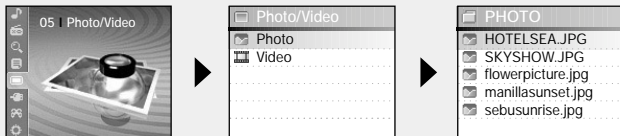
1 Press the MENU button to move to menu, and then select Photo/Video.

- Photo/Video screen appears.

2 Press the SELECT button after selecting [Photo] folder.

3 Move to the image you want to view, and then press the MENU button.

- The selected image file will be displayed.
- ▲, ▼ : Volume Control.
- ◀, ▶ : Move to previous/next image.
- MENU: Move to menu screen.
- TOOL: Image Tool screen appears when TOOL button is pressed. Select [Slide Show] → [On] in Image Tool screen to view saved image files in a slide show.



## Note

- The optimal image size for the unit is 160X128. If the image size is too large, use Multimedia Studio to adjust the size and resend it to the player. (see page 24).
- Image files with size of 2MB or above cannot be viewed.

# Viewing Video Files

- 1 Press the MENU button to move to menu, and then select Photo/Video.
  - Photo/Video screen appears.
- 2 Press the SELECT button after selecting [Video] folder.
- 3 Move to the video you want to view, and then press the MENU button.
  - The selected video file is played.
  - ▲, ▼ : Volume Control.
  - (Short press) ◀◀, ▶▶: Move to previous/next video
  - (Long press) ◀◀, ▶▶: Fast Search
  - MENU: Move to menu screen.
  - TOOL: Check video title, progress time, total time



## Note

- The player only supports video files which have an .svi extension. To view video files in other formats, convert the files using Multimedia Studio and then transfer the converted files into the player. To transfer a different format video file, refer to "Sending Videos" in "Using Multimedia Studio". (See page 25.)

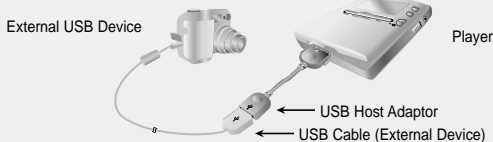


## Connecting an External Device

- To use USB host function, the capacity of the external device to be connected should be equal to or larger than 128MB.
- The external device should have FAT 16/32 file system.
- Only devices that appear as a Removable Disc on your PC can be used with this feature.

1 Connect the player to the USB host adaptor.

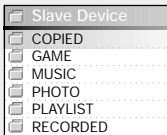
2 Use the external device's USB cable to connect the external device and the USB host adaptor.



3 Press the MENU button to switch to Menu screen.  
Select USB Host and then press the SELECT button.

4 Use the SELECT button to move to 'Please connect a slave device [OK]' and then press the SELECT button.

- The External Device screen will be displayed.



# Using USB Host

## Transferring Files from an External Device to the Player

1 Move to a file to transfer to the player and then press the SELECT button.

- ▲, ▼ : To move up or down.
- SELECT : To move to a sub folder, or select a file.
- Press the TOOL button and select **[Select All]** to select all files stored in the external device.

2 Press the TOOL button to move to the USB Tool screen and then select [Cut] or [Copy].

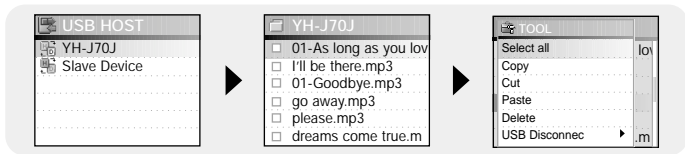
- Cut: If you paste the selected file to the YP-J70J, the original file will be deleted.
- Copy: The selected file will be copied.
- Select **[Delete]** from the USB tool display to delete the selected file.



3 Press the ⏪ button to move to [YH-J70J], and then press the SELECT button.

- YH-J70J Navigation screen appears.

- 4 Move to a folder into which the file of the external device is to be copied.
- 5 Select the TOOL button to move to the USB Tool screen and then select the [Paste].
  - The selected file is transferred to the player. Do not disconnect the player or the external device while transferring the file.



## Note

- To transfer files from the player to an external device, follow the same procedure.

# Using USB Host

## YH-J70J USB HOST Compatible

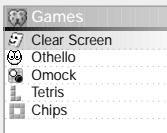
- You can transfer images from the cameras listed below to your YH-J70J for storage.
- The following is a list of cameras that are compatible with YH-J70J USB Host function.
- This list may change with firmware upgrade.

Device	Model Number	Device	Model Number
MP3 Player (Samsung)	YP-55	Digital Camera	Fuji Finepix-A340
	YP-MT6		Fuji Finepix-F450
	YP-T6		Fuji Finepix-F810
	YP-ST5		Panasonic Lumix-FZ20
	YP-T5		Olympus 300-Digital
	YP-53		Pentax Optio-S40
	YH-920		H.P. Photosmart 945
	YP-T7		NIKON COOLPix 4200
	YP-C1		NIKON COOLPix 4300
	YP-60		NIKON COOLPix S1
YP-T8	Panasonic DMC-FX7		
	KENOX CYBER400		
	KENOX V10		
	KENOX U-CA5		

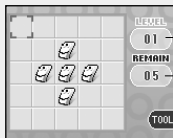
- Press the MENU button to move to menu, and then select Games with the NAVI button.  
Press SELECT to choose the Game mode.
- Move to the desired game by using the NAVI button, and then press the SELECT button.

## Clear Screen

1 Select [START] with the NAVI button and press SELECT to start the game.



2 Select level using the SELECT button when level screen appears.



● Current Level

● Number of remaining stones

### [Game Method]

- The objective of the game is to clear the screen.

E.g. At level 1, if you select the stone in the center, 4 directions are reversed and the screen is cleared.

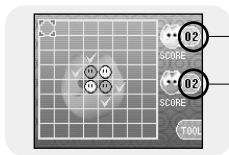
- ▲, ▼, SELECT: Move Up, Down and Select
- ◀, ▶ : Move Left and Right
- TOOL: Restart, Exit

Download from [Www.Somanuals.com](http://www.Somanuals.com). All Manuals Search And Download.

# Playing Games

## Press [START] to start game.

*I* Press [START] to start game.



• Number of Yellow Stones

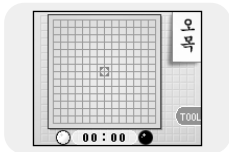
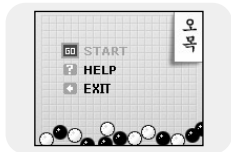
• Number of Pink Stones

### [Game Method]

- When you place your stones in horizontal, vertical or diagonal direction, the stones inside become yours.  
The side with the most stones after the game wins.
- ▲, ▼, SELECT: Move Up, Down and Select
- ◀, ▶ : Move Left and Right
- TOOL: Restart, Exit

## Press [START] to start game.

1 Press [START] to start game.



### [Game Method]

- The side with 5 straight stones in a horizontal, vertical or diagonal row wins the game.
- ▲, ▼, SELECT: Move Up, Down and Select
- ◀, ▶ : Move Left and Right
- TOOL: Restart, Exit

# Playing Games

## Tetris

1 Press [START] to start game.



2 Select level using the SELECT button when level screen appears.



### [Game Method]

- The objective of the game is to eliminate rows by stacking various shaped blocks.
- SELECT : Change block shapes
- ◀, ▶ : Move Left and Right
- ▼ : Pull down
- TOOL: Restart, Exit

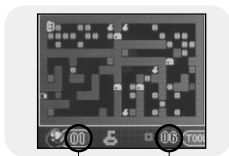
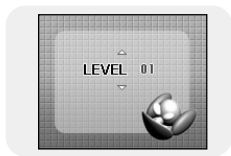


## I Chips

1 Press [START] to start game.



2 Select level using the SELECT button when level screen appears.



• Current Level

• The remaining number of items you have to collect at the current level

### [Game Method]

- The objective of the game is to reach the final gate by moving obstacles and acquiring keys and items. You can pass the gate only when you get the key, and you can proceed to the next level only after collecting the required number of items at the current level.
- ▲, ▼ : Move Up, Down and Select
- ◀, ▶ : Move Left and Right
- TOOL: Restart, Exit

Download from [Www.Somanuals.com](http://www.Somanuals.com). All Manuals Search And Download.

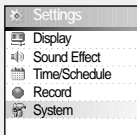
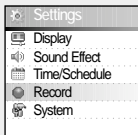
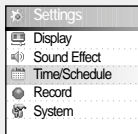
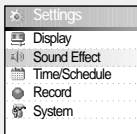
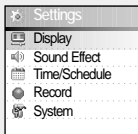
# Setting the Advanced Functions

**1** Press the MENU button to move to menu, then select Settings.



**2** In Settings, move to the function you want and press the SELECT button to select.

● Press the **◀◀** button to move to the previous menu.

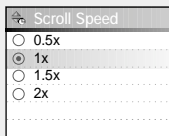


# Screen Display Settings

Press the MENU button to move to menu, and then select [Settings] → [Display].

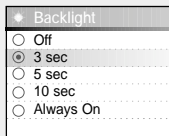
## Scroll Speed

- Use the SELECT button to set the scroll speed to adjust the speed of the track title movement.
- Scroll speed can be set to 0.5x, 1x, 1.5x or 2x.



## Backlight

- Use the SELECT button to set the backlight time.
- Backlight time can be set to Off, 3 seconds, 5 seconds, 10 seconds or Always On.
- When set to Always On, the Backlight stays on continuously.



# LCD screen Off Time

## LCD Off Time

- Use the SELECT button to set the LCD screen off Time.
- LCD Off time can be set to 3 seconds, 5 seconds, 10 seconds, 20 seconds, 30 seconds or Always On.
- When set to Always On, the LCD screen stays on continuously.
- The screen switches off after the set time.  
The screen returns when a button is pressed.



## Text Set

1 Select a desired text color.

- **◀◀, ▶▶** : Move Left, Right
- **▲, ▼, SELECT**: Select

2 After setting is complete, move to OK and then press the SELECT button.

- If you select a color, text will be displayed in that color.



## Graphic EQ

- Use the SELECT button to set the display type of the screen.
- Graphic EQ display can be set to Graphic EQ1, 2 or Tag Info.
- If you select the Tag info, tag information included in the music file is displayed on the screen.

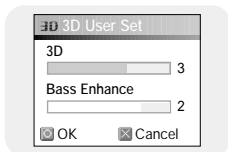
# Sound Effect Settings

Press the MENU button to move to menu, and then select [Settings] → [Sound Effect].

## 3D User Set

1 Select the desired 3D and Bass Enhance level.

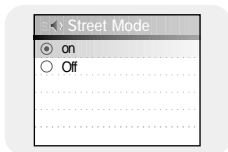
- 3D and Bass Enhance level is only applied when 3D-User is selected. You can set the 3D effect from and Bass Enhance from 0 to 3.
- SELECT : Move Up, Down and Select
- ◀▶, ▶▶ : Move Level



2 After setting is complete, move to OK and then press the SELECT button.

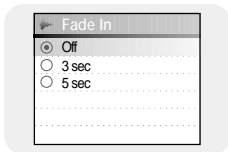
## Street Mode

- Use the SELECT button to select Street Mode On or Off.
- On: You can hear the sound with better quality when you listen to music in the street.
- Off: Tracks are played in the sound mode you set.



## Fade In

- Protects your ears by gradually increasing the volume when playback starts.
- Use the SELECT button to select the desired fade time.
  - Off : Music is played at the selected volume.
  - 3 sec : Volume gradually increases for 3 seconds.
  - 5 sec : Volume gradually increases for 5 seconds.

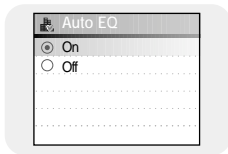


# Sound Effect Settings

## Auto EQ

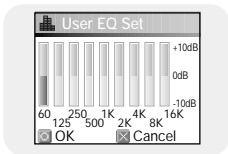
- Use the SELECT button to select Automatic EQ On/Off.
- On : The Jazz, Classic, Pop or Rock mode EQ is automatically selected according to the music file's ID3 tag information.
- Off : Music file is played in the current EQ mode chosen.

EQ MODE	TAG INFO
ROCK	CLASSIC ROCK, CHRISTIAN ROCK, ROCK, ALTERNROCK, INSTRUMENTAL ROCK, SOUTHERN ROCK, ROCK & ROLL, HARD ROCK, FOLK-ROCK, GOTHIC ROCK, PROGRESSIVE ROCK, PSYCHEDELIC ROCK, SYMPHONIC ROCK, SLOW ROCK, PUNK ROCK, DEATH METAL
CLASSIC	CLASSIC, OPERA, CHAMBER MUSIC, SONATA, SYMPHONY
JAZZ	JAZZ, JAZZ+FUNK, ACID JAZZ
POP	POP, INSTRUMENTAL POP, POP-FOLK, DANCE, EURODANCE, DANCEHALL, DISCO, HIP-HOP



## User EQ Set

- If User EQ is selected, you can make your own EQ settings.
- Use the **◀▶** button to move to right or left and use the SELECT button to adjust the level. After setting is complete, move to OK and then press the SELECT button.



# Time/Schedule Settings

Press the MENU button to move to menu, and then select [Settings] → [Time/Schedule].

## Memo

- Use the Memo feature to create memos and save them on your player.

**1** Select [New Memo] when memo screen appears.

**2** Enter desired contents.

- Input Procedure



Move to a desired key by using ▲, ▼, ◀, ▶, and ► buttons and press the SELECT button.

Press the SELECT button twice to enter the second letter of the key and three times to enter the third.

E.g. To enter 'MOVE',

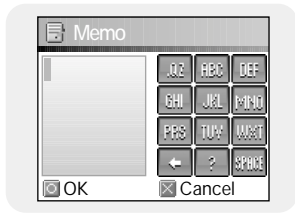
Move to the corresponding key and press the SELECT button.

 (Once) →  (3 times) →  (3 times) →  (2 times)

- Select  to delete a letter, and select  to enter blank space.

### Note

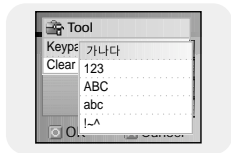
- You cannot enter more than a page of memo.



# Time/Schedule Settings

## 3 Press the TOOL button.

- Keypad Set : You can change the keypad.  
You can select Korean → Numeric →  
Capital English Font → Small English Font →  
Special Characters.
- Clear : Delete the whole memo.



## 4 After typing is complete, move to OK and then press the SELECT button.

### Note

- Move to a memo to delete in the Select Memo list screen and press the TOOL button.  
Then, select [Delete] to delete the memo.

## Calendar

- Allows you to keep track of the date.

## 1 Press the TOOL button in calendar screen.

- Day: Move by day
- Month: Move by month
- Year: Move by year



## 2 Move to the date you want to check.

- ▲, ▼ : Move up and down
- ◀, ▶ : Move left and right

## 3 Press the SELECT button after checking.

- Previous screen is displayed.

Download from [www.3manuals.com](http://www.3manuals.com). All Manuals Search And Download.

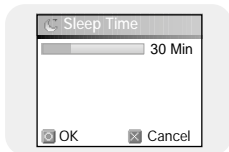


## Sleep

- You can set the player to turn off at a preset time.

1 Use the **◀◀, ▶▶** button to set sleep time.

- Sleep time can be set to Off, 10-120 minutes.  
The player will automatically turn off after the time you set.
- When sleep time set to Off, the function is disabled.



2 After setting is complete, move to OK and then press the SELECT button.

## Date/Time

● You can set the current date and time.

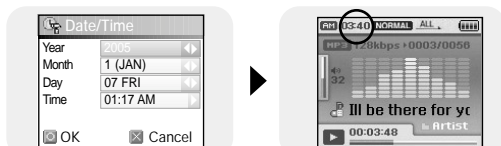
1 Use the NAVI button to move to the Year, Month or Day, and then select the date using the **◀◀, ▶▶** button.

2 Press the **▶▶** button after moving to Time.

3 Use the NAVI button to move to the Hour, Minute or AM/PM.

4 Use the **◀◀, ▶▶** button to set the current time and then press the SELECT button.

5 After setting is complete, move to OK and then press the SELECT button.

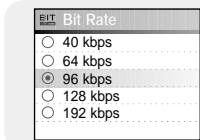


# Recording Settings

Press the MENU button to move to menu, and then select [Settings] → [Record].

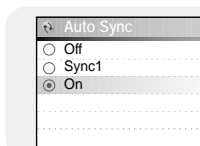
## Bit Rate

- Use the SELECT button to select the desired recording bit rate.
- Recording bit rate can be set to 40kbps, 64kbps, 96kbps, 128kbps or 192kbps.



## Auto Sync

- Use the SELECT button to set the Auto Sync Time.
- Auto Sync Time is a function for separating and saving MP3 files when there is no sound for a set time during MP3 recording.
- In SYNC 1 setting, recording stops and it moves to Music Mode when there is no sound for over 2 seconds during recording.
- If Auto Sync Time is set to Off, recording keeps going even if there is no sound, and then it is saved as one file.



Press the MENU button to move to menu, and then select [Settings] → [System].

## Languages

- Use the SELECT button to select the desired language to display the menu screen.
- English → 한국어 → 日本語 → 简体汉语 → 繁體漢語 → Русский → ESPAÑOL → Français → Deutsch → Italiano



## File Language

- Use the SELECT button to select the desired language to display tag info and text.
- English → Korean → Japanese → Simplified Chinese → Traditional Chinese → Russian → Spanish → French → German → Italian → Albanian → Afrikaans → Basque → Bulgarian → Byelorussian → Catalan → Czech → Croatian → Danish → Dutch → Estonian → Faeroese → Finnish → Galician → Hungarian → Icelandic → Irish → Latvian → Lithuanian → Macedonian → Norwegian → Polish → Porthguuese → Rhaeto-Romanic → Romanian → Scottish → Serbian → Singaporean → Slovak → Slovenian → Swahili → Swedish → Ukrainian



### Note

- What is an ID3 Tag?

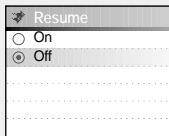
This is a part of the MP3 file which carries information relevant to the file, such as the title, artist, album, year, genre and a comment field.

- Supported languages can be changed or added.

# System Settings

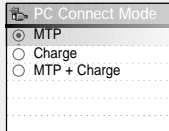
## Resume

- Use the SELECT button to select resume On/Off.
- On : Playback will resume from the point it was previously stopped. In case of text files, text will resume from the point of last view.
- Off : Playback will resume from the beginning of the file/track that was playing when stopped. In case of text files, text will resume at the beginning of the file.



## PC Connect Mode

- Use the SELECT button to select PC Connection Mode.
- MTP: Use to transfer files to the player or to transfer image and video files using Windows Media Player 10.0 or Multimedia Studio.
- Charge: Use to charge via the USB cable.
- MTP + Charge: Connection mode that enables the user to charge the player while transferring files.



### Note

- In some PCs, you may not be able to connect the player in [MTP+ Charge] mode. In this case, connect the player in [MTP] mode.

## Auto Off Time

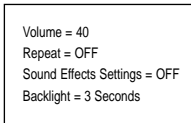
- Use the SELECT button to select the desired auto off time.
- Off → After 30sec → After 1min → After 5min → After 10min
- If no button is pressed after play stops, the player will automatically turn off after the time you set.

## Sort

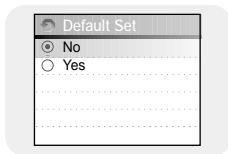
- Use the SELECT button to select the desired sort type.
- Off: The stored files are not sorted.
- Type: The stored files are sorted in alphabetical order of the file extension.
- Name: The stored files are sorted in alphabetical order of the file name.

## Default Set

- Use the SELECT button to select default set Yes or No.
- If you select **[Yes]**, a popup window will be displayed. If you select **[OK]**, all selected settings will be restored to the default setting.



Default Settings



### Note

- All files will remain on your player after selecting Default.

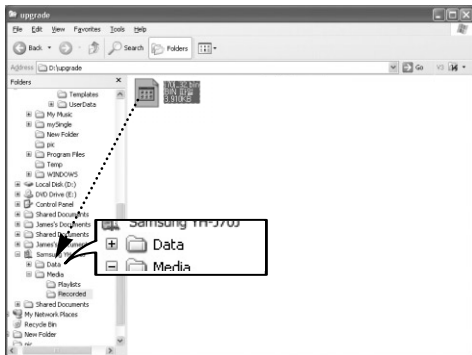
## About

- Select About to check total capacity, available capacity and the software version.
- Download from [www.Somanuals.com](http://www.Somanuals.com). All Manuals Search And Download.

# To Upgrade Firmware

- 1 Connect to <http://www.samsung.com>, select **[SUPPORT]** → **[DOWNLOAD CENTER]** and then select your product.
- 2 When the product page appears, select **[Firmware]** below the model name to download the latest firmware.
- 3 Uncompress the downloaded file in a folder.
  - Bin file will be displayed.
- 4 Connect the player to your PC with the USB cable.
- 5 Right click on the Start button, then choose Explore to Open Windows Explorer on your PC.
  - **[Samsung YP-J70J]** is displayed in Windows Explorer.

- 6 Select the uncompressed file and drag-and-drop it into [Samsung YP-J70J]→[Data].

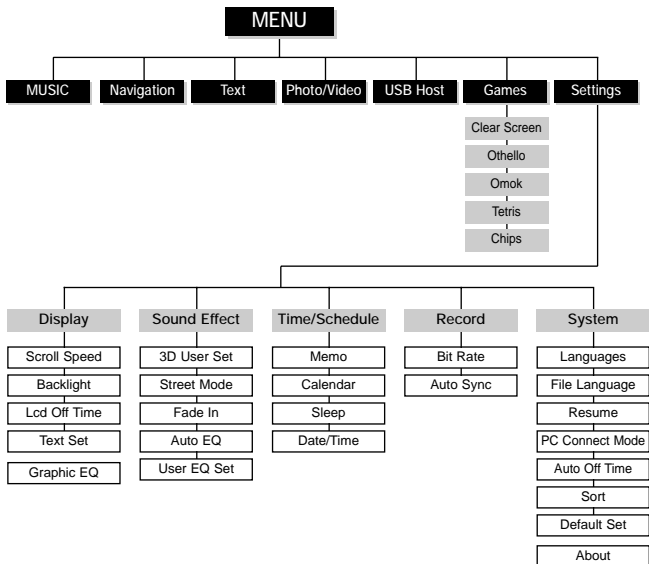


- 7 After disconnecting USB Cable, turn off the player.
- 8 Press and hold the ►|| button to turn on the player.
- The firmware will be upgraded.
  - When upgrading is complete, the player will be turned off automatically.

## Note

- Check the battery charge status of the player. If the battery is not sufficiently charged, the firmware will not be upgraded.

# MENU Table



- Use the SELECT button to move and select.



## **The player doesn't work. There is nothing showing on the display panel.**

- Reset the Player by pressing the Reset Hole on the back of the player.
  - Connect the charger.
  - Make sure the Hold switch is in the off position.
- 

## **There is no sound even if I press the Play button in Music mode.**

- Check if there are MP3 or WMA files on the player.
  - Non-playable file formats (e.g. MPEG1 LAYER 1 file) cannot be played.
- 

## **I cannot download files.**

- Check the battery's power level.
  - Check the USB connection between the player and your PC.  
The player will be disconnected if you restart the PC while the player is connected.  
Try reconnecting the player.
- 

## **The Backlight is off.**

- Please check the Backlight settings.
- Backlight is automatically disabled for longer playback in case of low battery power.

## **The playback time displayed during playback does not seem right.**

- Check if you are playing a VBR (Variable Bit Rate) file. VBR files are only partially supported.
- 

## **The buttons on the player do not work.**

- Make sure the Hold switch is in the off position.
  - Check if USB cable is connected.  
When USB cable is connected, the buttons will not work.
- 

## **The LCD window is too dark.**

- Check the backlight time/LCD off time.
- 

## **During playback, some unknown characters are displayed on the display panel.**

- Unsupported languages will be indicated by a question mark (?).
- 

## **"Null" appears on the playback screen in place of the selected music file's title.**

- There is no ID3 tag information for the music file. Edit the song title, artist, and album information of the song on your PC.
- 

## **It takes a long time when I search songs by Song Title, Artist, or Album.**

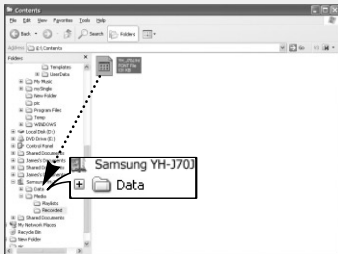
- If there are many music files on your player, it may take longer to read them.

After selecting a language other than English for the menu, some unknown characters are displayed on the display panel.

- Connect the player to your PC.

Insert the installation CD into the CD-ROM drive. Select [Contents] → [J70J.fnt] and drag-and-drop it into [Samsung YH-J70J] → [Data].

After disconnecting USB Cable, turn off the player. Press and hold the **▶||** button to turn on the player.



# Specifications

<b>Model</b>	YH-J70J
<b>Internal Memory Capacity</b>	YHJ70J LB/LW (30GB)
<b>Built-in Rechargeable Battery Capacity</b>	950mAh
<b>Voltage</b>	4.2V (Li-ion Rechargeable Battery)
<b>Dimensions/Weight</b>	2.44 X 3.93 X 0.65 inch/4.76 oz
<b>Case</b>	Plastic
<b>Signal to Noise Ratio</b>	90dB with 20KHz LPF(based on 1KHz OdB)
<b>Earphone Jack Output Power</b>	20mW (16Ω)
<b>Output Frequency Range</b>	20Hz~20KHz
<b>Operating Temperature Range</b>	-5~ +35°C (23~95°F)
<b>File Support</b>	AUDIO : MPEG1/2/2.5 Layer3(8Kbps~320Kbps, 8KHz~48KHz), WMA, Audio ASF (48Kbps~192Kbps, 8KHz~48KHz), Ogg (Q0-Q10) IMAGE : QCIF 160x128
<b>Number of Playable Files</b>	Normal Folder : 1024 Files Recorded Folder : 999 Files

The product unit accompanying this user manual is licensed under certain intellectual property rights of certain third parties. In particular, this product is licensed under the following US patents : 5,991,715, 5,740,317, 4,972,484, 5,214,678, 5,323,396, 5,539,829, 5,606,618, 5,530,655, 5,777, 992, 6,289,308, 5,610,985, 5,481,643,5,544,247, 5,960,037, 6,023,490, 5,878,080, and under US Published Patent Application No. 2001-44713-A1.

This license is limited to private non-commercial use by end-user consumers for licensed contents. No rights are granted for commercial use. The license does not cover any product unit other than this product unit and the license does not extend to any unlicensed product unit or process conforming to ISO/IEC 11172-3 or ISO/IEC 13818-3 used or sold in combination with this product unit. The license only covers the use of this product unit to encode and/or decode audio files conforming to the ISO/IEC 11172-3 or ISO/IEC 13818-3. No rights are granted under this license for product features or functions that do not conform to the ISO/IEC 11172-3 or ISO/IEC 13818-3.

# Safety Information

## FCC

This device complies with part 15 of the FCC Rules. Operation is subject to the following two conditions:

(1) This device may not cause harmful interference, and (2) this device must accept any interference received, including interference that may cause undesired operation.

**Caution:** Any changes or modifications in construction of this device which are not expressly approved by the party responsible for compliance could void the user's authority to operate the equipment

**Note:** This equipment has been tested and found to comply with the limits for a Class B digital device, pursuant to part 15 of the FCC Rules. These limits are designed to provide reasonable protection against harmful interference in a residential installation. This equipment generates, uses and can radiate radio frequency energy and, if not installed and used in accordance with the instructions, may cause harmful interference to radio communications. However, there is no guarantee that interference will not occur in a particular installation.

If this equipment does cause harmful interference to radio or television reception, which can be determined by turning the equipment off and on, the user is encouraged to try to correct the interference by one or more of the following measures:

- ◆ Reorient or relocate the receiving antenna.
- ◆ Increase the separation between the equipment and receiver.
- ◆ Connect the equipment to an outlet on a circuit different from that to which the receiver is connected.
- ◆ Consult the dealer or an experienced radio/TV technician for help.

## FCC

Any changes or modifications not expressly approved by the grantee of this device could void the user's authority to operate the device.

## Compliance

This product conforms to the following Council Directive:

- ◆ Directive 89/336/EEC, 92/31/EEC(EMC)

## Declaration of Conformity

Name: Samsung Electronics Co., Ltd  
Address: 416, Maetan-3Dong, Paldal-Gu,  
Suwon City, Kyungki-Do, Korea 442-742  
declares under its sole responsibility that the  
product

Trade Name: Samsung Electronics Co., Ltd  
Model Number: YH-J70J  
has been tested according to the  
FCC/CISPR22/95 requirements for Class B  
devices and found compliant with the following  
standards

EMI/EMC: AnSI C63.4 1992, FCC Part 15  
Subpart B

This device complies with part 15 of the FCC  
Rules.

Operation is subject to the following two  
conditions:

- 1.This device may not cause harmful  
interference, and
- 2.This device must accept any interference  
received, including interference that may  
cause undesirable operation.

Party Responsible for Product Compliance

Samsung Electronics America  
QA Lab.  
3351 Michelson Dr. Suite #290  
Irvine, CA92612

**Samsung warrants this product as free of defects in material, design and workmanship for a period of twelve(12) months from the original date of purchase.**

If during the period of warranty this product proves defective under normal use and service, you should return the product to the retailer from whom it was originally purchased. The liability of Samsung and its appointed maintenance company is limited to the cost of repair and/or replacement of the unit under warranty.

Return of the product for defective reasons should be to the original purchaser; however, Samsung Authorized Dealers and Authorized Service Centers will comply with the warranty on the terms issued to purchasers in the country concerned. For further information relating to the Authorized Service Centers contact;

1-800-SAMSUNG (1-800-726-7864)

[www.samsung.com](http://www.samsung.com)

## WARRANTY CONDITIONS:

- 1.The warranty is only valid when the warranty card is properly completed, and upon presentation of the proof of purchase consisting of original invoice or sales slip confirmation, indicating the date of purchase, dealer's name, model, serial No. and product number. Samsung reserves the right to refuse warranty service if this information has been removed or changed after the original purchase of the product from the dealer.
- 2.Samsung's obligations are to the repair of the defective part, and at its discretion, replacement of the product (service exchange unit).
- 3.Warranty repairs must be carried out by an Authorized Samsung Dealer/Service Center. No reimbursement will be made for repairs carried out by non Samsung Centers, and warranty coverage will not be valid for any repairs or damage caused by such repairs.
- 4.Repair or replacement under the terms of this warranty does not give right to extension to or a new starting of the period of warranty. Repair or direct replacement under the terms of this warranty may be fulfilled with functionally equivalent service exchange units.



5. The warranty is not applicable in cases other than defects in material, design and workmanship. The warranty does not cover the following:

- ◆ Periodic checks, maintenance, repair and replacement of parts due to normal wear and tear.
- ◆ Abuse or misuse, including but not solely limited to the failure to use this product for its normal purpose or in accordance with Samsung's instructions for use and maintenance.
- ◆ Use of the product in conjunction with accessories not approved by Samsung for use with this product.
- ◆ Failure of the product arising from incorrect installation or use not consistent with technical or safety standards in current force, or failure to comply with product manual instructions.
- ◆ Accidents, Acts of God or any cause beyond the control of Samsung caused by lightning, water, fire, public disturbances and improper ventilation.

◆ Unauthorized modifications carried out for the product to comply with local or national technical standards in countries for which the Samsung product was not originally designed.

◆ Repairs performed by non-authorized service centers such as opening of the product by a non-authorized person.

◆ The model, serial No. and product number on the product has been altered, deleted, removed or made illegible.

6. This warranty does not affect the consumer's statutory rights nor the consumer's rights against the dealer from their purchase/sales agreement.

# Warranty

THERE ARE NO EXPRESS WARRANTIES OTHER THAN THOSE LISTED AND DESCRIBED ABOVE, AND NO WARRANTIES WHETHER EXPRESS OR IMPLIED, INCLUDING, BUT NOT LIMITED TO, ANY IMPLIED WARRANTIES OF MERCHANTABILITY OR FITNESS FOR A PARTICULAR PURPOSE, SHALL APPLY AFTER THE EXPRESS WARRANTY PERIODS STATED ABOVE, AND NO OTHER EXPRESS WARRANTY OR GUARANTY GIVEN BY ANY PERSON, FIRM OR CORPORATION WITH RESPECT TO THIS PRODUCT SHALL BE BINDING ON SAMSUNG, SAMSUNG SHALL NOT BE LIABLE FOR LOSS OF REVENUE OR PROFITS, FAILURE TO REALIZE SAVINGS OR OTHER BENEFITS, OR ANY OTHER SPECIAL, INCIDENTAL OR CONSEQUENTIAL DAMAGES CAUSED BY THE USE, MISUSE OR INABILITY TO USE THIS PRODUCT, REGARDLESS OF THE LEGAL THEORY ON WHICH THE CLAIM IS BASED, AND EVEN IF SAMSUNG HAS BEEN ADVISED OF THE POSSIBILITY OF SUCH DAMAGES. NOR SHALL RECOVERY OF ANY KIND AGAINST SAMSUNG BE GREATER IN AMOUNT THAN THE PURCHASE PRICE OF THE PRODUCT SOLD BY SAMSUNG AND CAUSING THE ALLEGED DAMAGE. WITHOUT LIMITING THE FOREGOING, PURCHASER

ASSUMES ALL RISK AND LIABILITY FOR LOSS, DAMAGE OR INJURY TO PURCHASER AND PURCHASER'S PROPERTY AND TO OTHERS AND THEIR PROPERTY ARISING OUT OF THE USE, MISUSE OR INABILITY TO USE THIS PRODUCT SOLD BY SAMSUNG NOT CAUSED DIRECTLY BY THE NEGLIGENCE OF SAMSUNG. THIS LIMITED WARRANTY SHALL NOT EXTEND TO ANYONE OTHER THAN THE ORIGINAL PURCHASER OF THIS PRODUCT, IS NONTRANSFERABLE AND STATES YOUR EXCLUSIVE REMEDY.

Some states do not allow limitations on how long an implied warranty lasts, or the exclusion or limitation of incidental or consequential damages, so the above limitations or exclusions may not apply to you. This warranty gives you specific legal rights, and you may also have other rights which vary from state to state. This product is for personal use only, and is only for use in compliance with the limitations of copyright and other laws. To obtain warranty service, please contact SAMSUNG at: Samsung Electronics America, Inc. 400 Valley Road, Suite 201 Mount Arlington, NJ 07856 1-800-SAMSUNG (1-800-726-7864) [www.samsung.com](http://www.samsung.com) 081299

**If you have any questions or comments relating to Samsung products,  
please contact the SAMSUNG customer care center.**

**Samsung Electronics America, Inc.  
1-800-SAMSUNG (7267864)  
[www.samsung.com](http://www.samsung.com)**



## Free Manuals Download Website

<http://myh66.com>

<http://usermanuals.us>

<http://www.somanuals.com>

<http://www.4manuals.cc>

<http://www.manual-lib.com>

<http://www.404manual.com>

<http://www.luxmanual.com>

<http://aubethermostatmanual.com>

Golf course search by state

<http://golfingnear.com>

Email search by domain

<http://emailbydomain.com>

Auto manuals search

<http://auto.somanuals.com>

TV manuals search

<http://tv.somanuals.com>