

SAMSUNG



YP-T55

Download from [Www.Somanuals.com](http://www.Somanuals.com). All Manuals Search And Download.

MP3, WMA , Audio ASF and Ogg Playback

- The player supports playback of MP3, WMA, Audio ASF and Ogg.

Removable Storage Device

- You can easily copy and paste files to the player using Windows Explorer.

Direct MP3 Recording

- You can convert music from CDs, cassettes, and radio into MP3 files without a PC.

FM Reception

- Listening to an FM program is made easy with Auto Search and Frequency Memory functions.

DNSe Surround Sound

- The 3D surround feature adds spaciousness to the sound.

Voice Recording Function

- You can make high quality voice recordings.

18 Hours Continuous Play

- This player uses one AAA/LR03 alkaline battery. Operation can last up to 18hours. Actual playing time may vary according to the type and capacity of the battery.

Upgradeable Firmware

- You can upgrade the player's firmware when available. Please check the home page (www.samsung.com) for upgrades.

Contents

Chapter 1 Preparations

Features	2
Safety Instructions.....	6
Components.....	8
Location of Controls	9
Display	10

Chapter 2 Connection to Computer

Connecting the player to PC	11
● Installing the USB Driver	12
● Connecting the player to PC with the USB cable	14
Manual Installation of USB Driver.....	16
● If an error occurs during installation of the USB driver	16
● In Windows 98SE.....	18
Transferring Files to your Player.....	20
● Disconnecting the player	22
Installing Media Studio.....	23
Using Media Studio.....	25
● Downloading Music Files	25
● Creating a Folder on your Player	27
● Deleting Files	28
● Formatting the Player in Media Studio.....	29
● Ripping Tracks from an Audio CD	30
To View Help on Media Studio.....	31

Chapter 3 Using Your Player

Playing Music and Turning Off the Device	32
● Turning Power On and Off	32
● Playing Music.....	32
● Pausing Music	32
● Adjusting the Volume.....	32
Hold Function.....	33
Recording Voice.....	33
Searching for Music/Voice Files.....	34
● To search for specific parts during play.....	34
● To change tracks during play	34
● To change tracks when stopped.....	34
Loop Repeating.....	35
● Starting Point	35
● Ending Point	35
Recording MP3s.....	36
MENU Options	37
Using Navigation	38
● Changing Mode.....	39
● Playing /Exiting Folder.....	40
Setting Playlist.....	41
● Setting Playlist	41
● Playing Playlist.....	41

Listening to FM Radio	42	● FM Region	54
● Manual Search for a Frequency	42	● FM Search Level	54
● Manual Storage of a Frequency	42	Time Settings	55
● Automatic Search for a Frequency	42	● Auto Off Time	55
● Searching Stored Frequencies	43	● Auto Sleep	55
● Deleting Stored Frequencies	43	● Intro Time	55
● Mute Function	43	System Settings	56
FM Recording	44	● Deleting a file	56
Setting the Advanced Functions	45	● Resume	56
Selecting the Playmode	46	● Beep	56
Setting the EQ mode	47	● Skip Interval	57
● DNSe	47	● Search Speed	57
● 3D User Setting	48	● Default vol	57
● User EQ Set	49	● Default Set	58
Setting the Play Speed	49	● User Button Mode	58
Display Settings	50	● About	58
● Scroll	50	Chapter 4 Appendix	
● Backlight	51	MENU Table	59
● Contrast	51	Chapter 5 Customer Support	
● Tag	51	Troubleshooting	60
● Bitrate	51	Specifications	62
Language Settings	52		
● Menu	52		
● ID3-Tag	52		
Recording Settings	53		
● Bit Rate	53		
● Auto Sync	53		
FM Radio Settings	54		
● Auto Preset	54		

Safety Instructions

Read and understand all the instructions to avoid injury to yourself and damage to the equipment.

Do not expose to extreme temperatures (above 95°F or below 23°F). Do not expose to moisture.



Do not apply excessive pressure on the device.



Do not let any foreign matter spill into the device.



Do not place heavy objects on top of the device.



Be careful not to subject the player to excessive pressure when wearing it round your neck.



Do not expose to chemicals such as benzene and thinners.



Do not expose to direct sunlight or heat sources.



Do not store in dusty areas.



Do not try to disassemble and repair the device yourself.



* Please be aware that we claim no responsibility for damage from data loss due to breakdown, repair or other causes.

Earphones

Follow Traffic Safety Instructions

- Do not use the earphones while driving an automobile or riding a bicycle. It's not only dangerous, but also against the law.
- It may cause an accident if you turn up the volume of the earphones while walking, especially when crossing intersections.

Protect your ears

- Do not turn up the volume too high. Doctors warn against prolonged exposure to high volume.
- Stop using the device or turn the volume down if you have ringing in your ears.
- Take care so that the earphone plug is not caught by your arm or other objects while walking or exercise.

Ambient operating conditions

- Ambient temperature : 5°C ~ 35°C (41°F ~ 95°F)
Humidity : 10 ~ 75%

Environmental Information

- Follow local guidelines for waste disposal when discarding packages, batteries, and old electronic appliances.
- Your player is packaged with cardboard, polyethylene etc., and does not use any unnecessary materials.

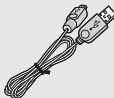
Components



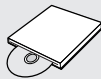
Player



Line In Cable



USB Cable



Installation CD



Alkaline Battery
(1 AAA/LR03 Type)



Neck Strap

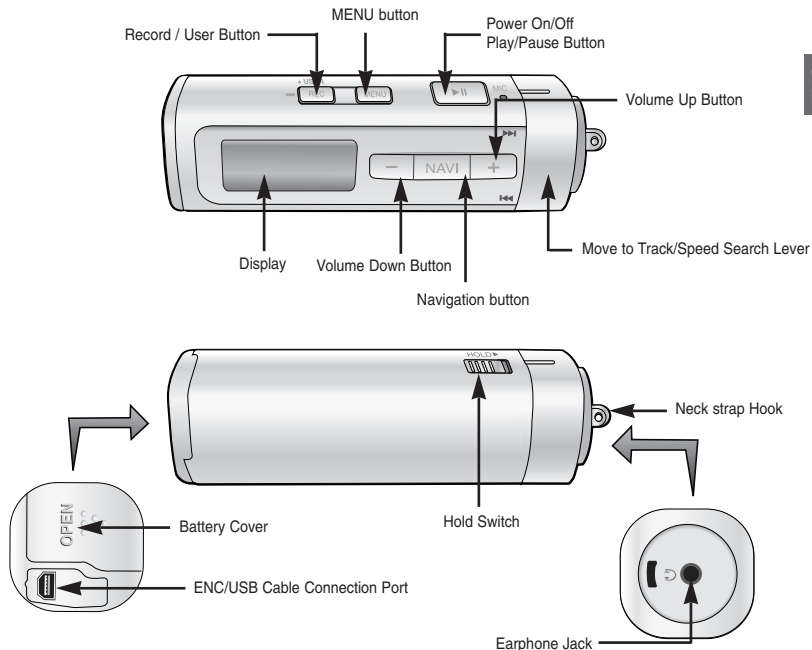


Earphones

- The capacity of the useable built-in memory is less than indicated as the internal firmware uses a part of the memory as well.
- Design of accessories is subject to change for the purposes of improvement, without notice.

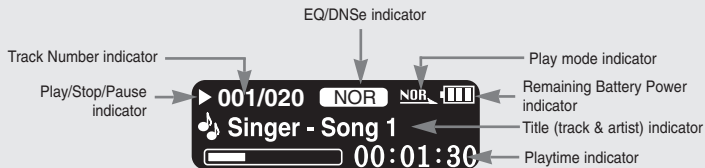
Location of Controls

ENG



Location of Controls

Display

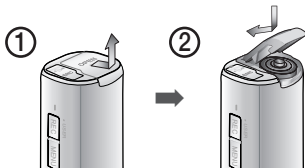


Note

- The screen pictures are for illustration purposes only. The actual screen may differ.

Inserting a Battery

- 1 Slide the cover in the direction of the arrow to open.
- 2 Insert a battery to the right poles + , - and push-close the cover in the direction of the arrow as indicated.



Note

- Do not place heavy objects on the cover.

► System Requirements.

The PC system must meet the following specifications:

- Pentium 200MHz or greater
- Windows 98 SE/ME/2000/XP
- 40MB of available hard disk space
- CD-ROM drive (double speed or greater)
- USB port (2.0) supported
- DirectX 8.0 or above

I Installing the USB Driver

Be sure to install the USB driver before connecting the play and a PC.

If 'Add Hardware Wizard' appears, click the [Cancel] button and install the USB driver.

- I** Insert the Installation CD into the CD-ROM drive.
If Select Country screen appears, select your country.

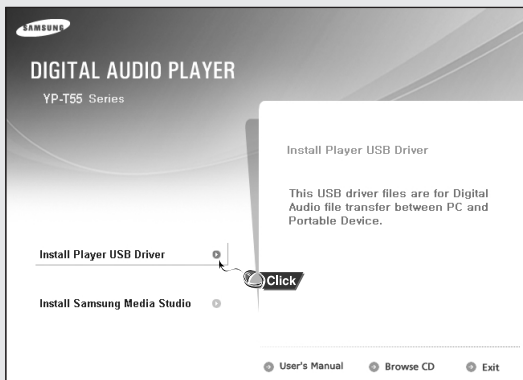


Note

- Install the operating system in Administrator Account (main user) for Windows 2000 or XP. Otherwise, installation will not be completed.
- Windows ME, 2000 and XP can recognize the driver without installing the provided program. However, you must install the program in order to format the player and upgrade firmware.
- On Windows98SE, you will not be able to use the player as a removable disk if the USB driver is not installed. You must install the USB driver file first.

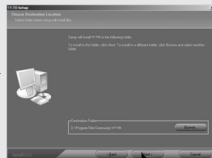
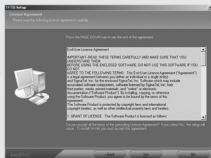
Connecting the player to PC

2 Select [Install Player USB Driver].



Connecting the player to PC

3 Follow the instructions in the window to complete the installation.



Connecting the player to PC

Connecting the player to PC with the USB cable

1 Connect the USB cable to the USB port on the computer.

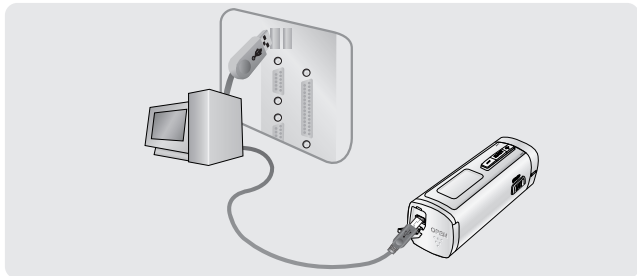
- If you disconnect the USB cable from your PC while implementing a command or initializing during USB driver installation, your PC may not function correctly.

2 Connect the other end of the USB cable to the USB cable connection port on the bottom of the player.

- If you disconnect the USB cable from your PC while implementing a command or initializing during USB driver installation, your PC may not function correctly.

3 The USB driver is installed with a message saying that it is searching for a new device. You may not see the display screen during installation. Go to the device manager to check that installation has been successfully completed.

4 Upon installation of the USB driver "Samsung YP-T55 USB Device" will appear in the [System Properties] → [Device Manager].



How to check if USB driver is properly installed

Windows 98:

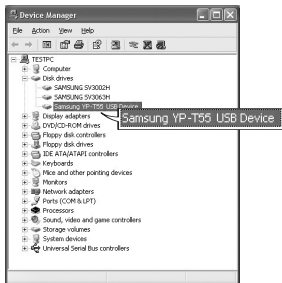
Control Panel → **System** → **Device Manager** → **Disk Drives** → **Samsung YP-T55**

Windows 2000:

Control Panel → **System** → **Hardware** → **Device Manager** → **Disk Drives** → **Samsung YP-T55 USB Device**

Windows XP:

Control Panel → **System** → **Hardware** → **Device Manager** → **Universal Serial Bus controllers** → **Disk Drives** → **Samsung YP-T55 USB Device**



5 When the USB driver is not installed automatically, refer to the next page.

Manual Installation of USB Driver

Go to "Transferring Files to your Player" if the USB driver is installed.
Follow these steps if the USB driver is not installed :

If an error occurs during installation of the USB driver

1 Check the device manager.

Windows 98SE/ME:

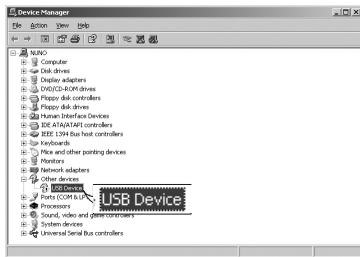
Control Panel → System → Device Manager

Windows 2000 / XP:

**Control Panel → System → Hardware →
Device Manager**

2 Check if there is a device listed with an exclamation point or a question mark (displayed as unknown device or USB device).

3 Double click on the device listed with an exclamation point or a question mark.



Note

- If you are using Windows 2000 and your version of Windows does not recognize the USB driver please download and install the latest service pack from windowsupdate.microsoft.com
- The installation method may vary depending on the type of PC or operating system. Contact your PC dealer or service center for installation information.
- If errors occur continuously when you install the USB driver, reconnect the USB plug after rebooting your system.

Manual Installation of USB Driver

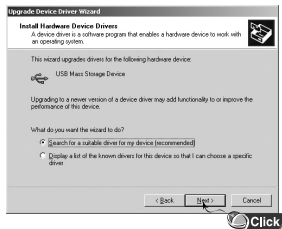
- 4 After selecting the driver, click **[Update Driver]**.



- 5 Click **[Next]**.



- 6 Select **[Search for a suitable driver for my device]** and then click **[Next]**.



- 7 Click **[Next]** to finish.



Manual Installation of USB Driver

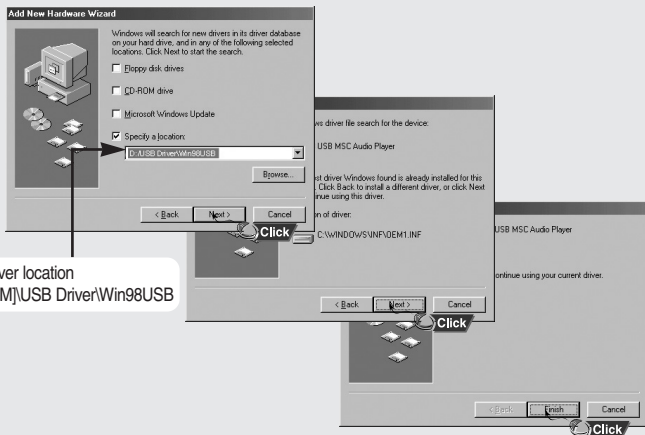
In Windows 98SE

Follow the instructions in the window to complete the installation.



Manual Installation of USB Driver

: You must reboot your computer to complete the installation.



Note

- You cannot use it as a removable disc in Windows 98SE if the YP-T55 program is not installed. Make sure to install the USB driver file first.

Transferring Files to your Player

When the MP3 player is connected to your PC, the PC will see it as a removable disc. Music and other files can then be dragged and dropped into the removable disc for playback on the MP3 player.

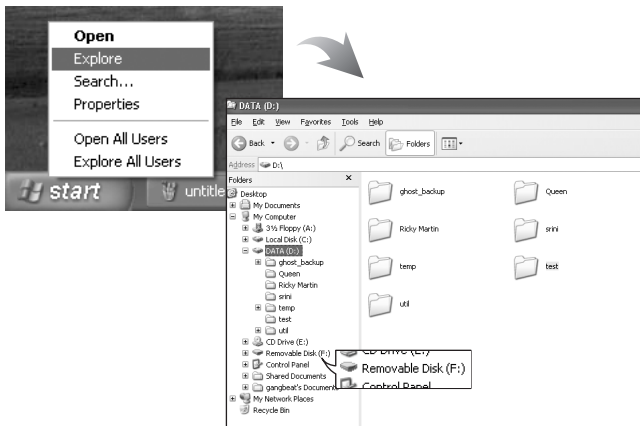
1 Connect the player to PC.

- For information on how to connect it to your PC, refer to Connecting the player to your PC. (See page 14).

2 Move the mouse over [Start] on the bottom of the screen, and right-click it.

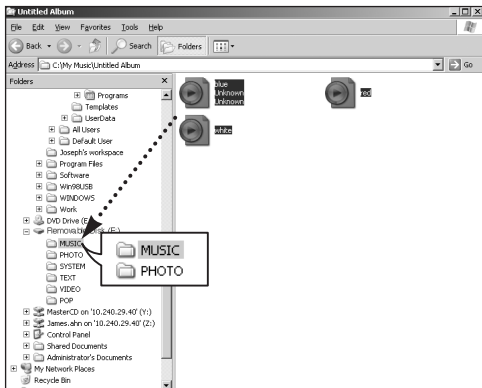
3 Click [Explore] to Open Windows Explorer on PC.

- [Removable Disk] is displayed in Windows Explorer.



Transferring Files to your Player

- 4 Select the file to save and drag-and-drop it into the removable disk icon.
(Files appear on the player in numerical, alphabetical order)
- For example, if you change the name of music files in Windows Explorer to 001***, 002***..., the files will be played in the numerical order you set.



Caution

- During file download or upload, "USB Transferring" message is displayed. Disconnecting the USB cable while the "USB Transferring" message is displayed may cause the malfunction of the player.
- The music file order displayed in Windows Explorer may differ from the play order on your player.

Transferring Files to your Player

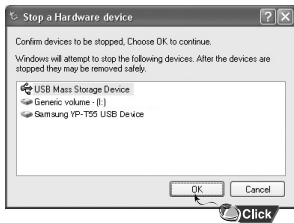
Disconnecting the player

After completing the file transfer, you must disconnect the player in the following way:

1 Double-click on the green arrow in the taskbar on the bottom right of the window.



2 When the [Stop a Hardware device] message appears, press the [OK] button and disconnect the player.



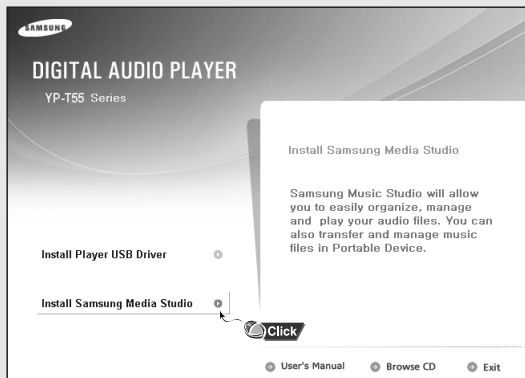
Notice

- If you disconnect the player improperly, the files on the device may be damaged and will not play.

Installing Media Studio

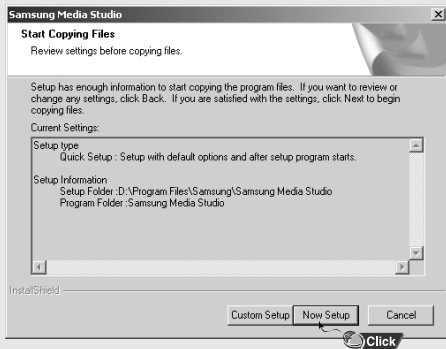
Media Studio is the program that enables you to download music files to the player, and play back music files on your PC.

- 1 Insert the Installation CD into CD-ROM drive.
Select **[Install Samsung Media Studio]**.



Installing Media Studio

- 2 Follow the instruction in the window to complete the installation.
- Samsung Media Studio icon will be created on the desktop.



- Double-click the Media Studio icon on the Desktop.

1 Downloading Music Files

1 Connect the player to your PC.


- A device connection window will appear on the right side of the screen.
Select [Device] → [Show device Window] at the top of the screen if device connection window does not automatically appear.

2 Select the folder with the file(s) you want to transfer from the [Library] window.

- The music files within the folder appear in the center of the screen.



Using Media Studio

3 When music files appear, select the file(s) you want to transfer, and then press the [Transfer]  button.

- The selected file(s) are transferred to the player.




Note

- Refer to [Help] for more detailed information.

- You can create folders on the player to better organize your music.

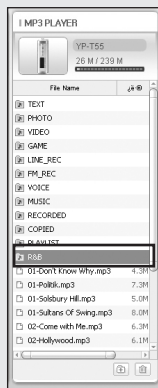
Creating a Folder on your Player

1 Connect the player to your PC.

2 Press the **[Create Folder]**  button at the bottom of device connection window.

3 Enter the name of the new folder when an input screen appears.

- A new folder is created.
- If you open a new folder and transfer a file, the file is transferred to the newly created folder.




Note

- Refer to **[Help]** for more detailed information.

Using Media Studio

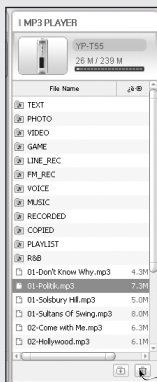
Deleting Files

1 Connect the player to your PC.

2 Press the **[Delete]**  button at the bottom of the connection windows after selecting required files or folders you want to delete.

3 Press the **[Confirm]** button when a Confirm Deletion screen appears.

- A selected folder or file is deleted.



Note

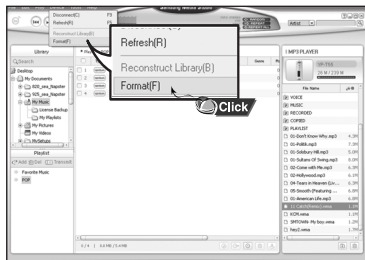
- Refer to **[Help]** for more detailed information.



- Formatting deletes all files on the MP3 player so maximum memory is available for new file storage. It saves you the trouble of deleting unwanted files one at a time.

Formatting the Player in Media Studio

- 1 Connect the player to your PC.
- 2 Press the [Device] → [Format] at the top of the screen.
- 3 Press the [Start] button when the Format screen appears.
 - The memory of the player is formatted and all the saved files will be deleted.



Notice

- If you format the player, all the menus you set are initialized.
- Care must be taken as formatted files can not be recovered.

Using Media Studio

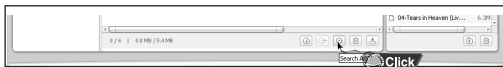
- Using the audio format conversion function, you can rip tracks from an audio CD as MP3 files.


I Ripping Tracks from an Audio CD

1 Insert the Audio CD into the CD-ROM drive of your PC.

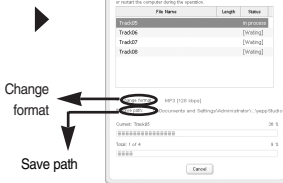
2 Press the [Search Audio CD]  button on the lower part of the screen.

- The tracks on the CD are displayed.



3 Select tracks to be ripped and press the [Rip a CD]  button.

- The selected file is converted into an MP3 file.
- Select [Tools] → [Audio Source Format Conversion Settings] on the top of the screen to change rip settings.



Note

- Refer to **[Help]** for more detailed information.

Playing Music and Turning Off the Device

Make sure the earphones are connected.

Turning Power On and Off

Power On : Press and hold the **▶||** button to turn on the power.

Power Off : Press and hold the **▶||** button to turn off the power.

Playing Music

Press the **▶||** button.

- Playback starts.

Pausing Music

Press the **▶||** button to pause playback.

- While in Pause mode, press the **▶||** button again to resume playback.
- If no buttons are pressed within 10 seconds (changes depending on settings), the player automatically powers off. You can set power off time by selecting [Settings] → [Time] → [Auto Off Time].

Adjusting the Volume

Press the **-**, **+** button to adjust the volume from 00 to 30.



Note

- If the file name is not displayed correctly, move to [Settings] → [Language] → [ID3-Tag] and then change the language setting.
- WMA files can only be played as music files with a compression rate of 48Kbps-192Kbps.

HOLD Function

In Hold mode, all buttons are disabled. This function is useful when you are walking or jogging.

Slide the  switch in the direction of the arrow.

* When the button is pressed, the “ Hold” message will appear on the display.

ENG

Recording Voice

* **To move to other modes from the Voice mode, refer to “Changing Mode”.**

1 Press and hold the **REC** button to start voice recording.

2 Press the **REC** button again to stop the recording and save the voice file.

- The files are recorded in the order of V001,V002....., and saved as WAV file in the VOICE folder after recording.



Note

- If the Memory is full, Voice Recording is stopped automatically.
- Voice recording does not work in FM mode or when the line in cable is connected.
- Beeps are disabled while recording.
- For voice recording, the bit rate is fixed to 32Kbps.

Searching for Music/Voice Files

To search for specific parts during play

- Turn the **⏮, ⏭** lever up or down during playback to search for the part you want to listen to.
- Release the lever to resume play normally.

To change tracks during play

- Turn the lever in the direction of **⏭** during playback to play the next track.
- Turn the lever in the direction of **⏮** within 5 seconds after playback starts, to move to and play the previous track. Turn the lever in the direction of **⏮** after 5 seconds to play the current track from the beginning.

To change tracks when stopped

- Turn the **⏮, ⏭** lever up or down in stop mode to move to the previous/next track.



Note

- VBR(Variable Bit Rate) file: A file that constantly changes the compression rate according to the type of sounds, such as their pitch, in the file.
- In the case of a VBR file, you cannot move to and play the previous track even if you press **⏮** within 5 seconds after playback starts.
- Files that were downloaded in MP2 or MP1 and had their file extension changed to MP3 may not play.

Move to [Settings] → [System] → [User Button Mode] in the menu and select [Repeat AB].

Starting Point

While playing music files, press the **USER** button briefly at the beginning of the loop you want to set.

- **A↔** appears in the display.



Ending Point

Press the **USER** button briefly again to set the end of the loop.

- **A↔B** appears in the display.
- The loop is played repeatedly.



Press the **USER** button briefly to cancel the loop.

Note

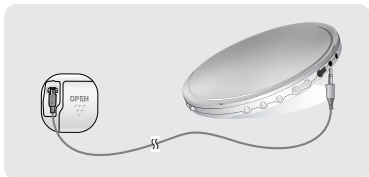
- Loop Repeat is automatically released if you Speed Search the **◀◀, ▶▶** lever .

Recording MP3s

*** To move to other modes from LINE_ENC mode, refer to “Changing Mode”.**

1 Connect the Audio OUT port (or Line OUT) on the external audio source to the ENC port on the device with the Line in cable.

- Press the play button on the external device to play the music to record.



2 Press and hold the REC button to start MP3 recording.

- If the ►|| button is pressed, recording is paused and if the ►|| button is pressed again, the recording resumes.

3 If the REC button is pressed during recording, the recording stops and an MP3 file is created.

- The files are recorded in the order of L ****001, L ****002.... and saved as MP3 files in the [LINE_ENC] folder after recording.

Note

- Bit Rates can be set within the range of 32Kbps~192Kbps.
- Beeps are disabled while recording.

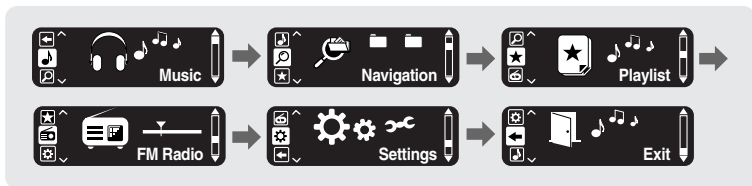
Notice

- Do not disconnect the Line in cable during recording.
- If the battery is not sufficiently charged, the player will not completely record the file.
- Adjust the volume of the external audio source to a suitable level and record it. If the volume level is too high or low, the sound quality might be poor.

Press the MENU button to switch to the Menu Mode.

Move to a menu item by using the ◀◀, ▶▶ lever and press the NAVI button to select the menu.

Press the MENU button once again to exit the Menu Mode.



- Music : To view the file currently playing.
- Navigation : To move to Navigation Mode and browse files and folders on the player.
- Playlist : To play back only the files you want
- FM Radio : To listen to FM radio
- Settings : To adjust the settings on the player.
- Exit : To exit MENU

Note

- Menu mode will be cancelled if no buttons are pressed within 25 seconds
- Language in the menu screen can be changed in [Settings] → [Language] → [Menu].

Using Navigation

You can easily search for files or switch modes using the Navigation function.

1 Press the **NAVI** button to enter Navigation mode.
or press and hold the **MENU** button to move to Menu and then select Navigation in Menu.

2 Select the file or folder that you want to play.

- **-** : When moving to a higher-level folder.
- **+** : When moving to a lower-level folder.
- **⏪, ⏩** : When moving to a file or folder in the same directory.
- **USER** : When there is not a lower folder, the selected file will be designated as part of the playlist.

3 Press the **▶||** button.

- The selected file will be played.



Note

- Press the **MENU** button in Navigation mode to exit the Navigation mode.

Changing Modes

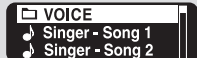
You can change the mode in the following method.

Ex) To change from the Voice mode to the Music mode

1 Press the **NAVI** button in the Voice mode.



2 Use the **▲** button to move to the upper folder.



3 Use the **◀▶** lever to move to the music file you want and press the **▶||** button.

- As it is changed to the Music mode, the selected file will be played.



Note

- To change to the FM mode, refer to "Menu Options".


Using Navigation

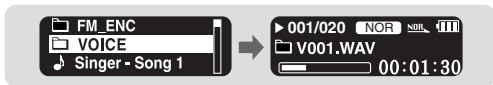
I Playing/Exiting Folder

► Playing Folder

1 Press the **NAVI** button to move to the Navigation mode.

2 Use the **◀▶** lever to move to the folder you want and press the **▶||** button.


- When "  " appears, the selected file will be played.



► Exiting Folder Play

1 Press the **NAVI** button during folder playback to move to the Navigation mode.

2 Use the **◀▶** lever to move to the file you want and press the **▶||** button.

- After folder play is released, "  " mark appear and the selected file will be played.



I Setting Playlist

- Move to the file you want in Navigation mode and press the **USER** button.
 - The selected file will be marked and added to the playlist.
 - To remove the file from the playlist, move to the marked file in Navigation mode and press the **USER** button again.



I Playing Playlist

1 Select Playlist in Menu.

- The playlist you set will be displayed.

2 Move to the file you want to play and press the **▶▶** button.

- “★” mark appears and the selected file will be played.



Listening to FM Radio

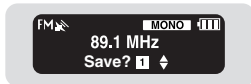
First, press the **MENU** button to display the menu screen and select FM Radio.

Manual Search for a Frequency

- Turn the **◀▶** lever briefly to search manually for the frequency you want.

Manual Storage of a Frequency

- After searching manually for the frequency you want, press the **USER** button to display the save screen.
- Use the **◀▶** lever to select the number you want to assign to save the frequency and then press the **USER** button.



Automatic Search for a Frequency

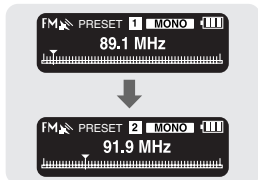
- Turn and hold the **◀▶** lever to search for and stop at frequencies with reception.

Note

- To exit from FM Mode, press the **MENU** button.
- Mono (MO) or Stereo (ST) is automatically selected.
- To save frequencies automatically, select [Settings] → [FM Radio] → [Auto Preset].

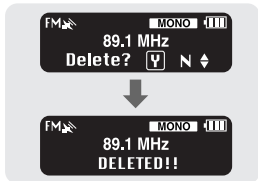
Searching Stored Frequencies

- 1 Press the NAVI button in FM Mode.
 - PRESET screen will appear.
- 2 Use the ◀◀, ▶▶ lever to move to the frequency you want.



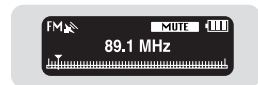
Deleting Stored Frequencies

- 1 After moving to the PRESET number you want to delete, press and hold the USER button.
- 2 After selecting the "Y", press the NAVI button.
 - The saved PRESET number will be deleted.



Mute Function

- 1 Press the ▶|| button in FM mode.
 - "MUTE" is displayed and no sound is heard.
- 2 Press the ▶|| button again.
 - Mute function is released.



Note

- You can store up to 20 frequencies.
- Press the NAVI button in the PRESET screen to exit the PRESET mode.

FM Recording

1 Press and hold the **REC** button during FM reception.

- Recording of the currently transmitted FM broadcast begins.



2 Press the **REC** button again.

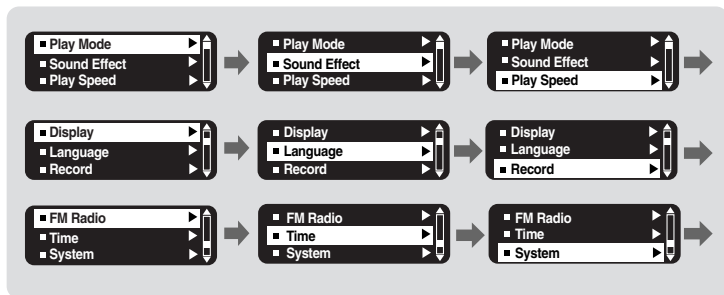
- A file is created and the recording stops.
- Files are recording in the order F001, F002, F003...and saved as MP3 files in [FM_ENC] folder.
- Press and hold the NAVI button while listening to the FM radio to move to the [FM_ENC] folder.

Note

- Beeps are disabled while recording.

Setting the Advanced Functions

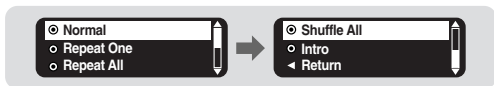
- 1 Select **Settings** in the MENU. (refer to “MENU Options”)
- 2 In Settings, use the **◀▶** lever to move to the function you want and press the **NAVI** button to select.
 - To move to a previous menu, use **◀** or select Return.



Selecting the Playmode

1 Press the MENU button. Select [Settings] → [Play Mode].

2 In Play mode, use the ◀▶ lever to move to the mode you want and press the NAVI button to select.



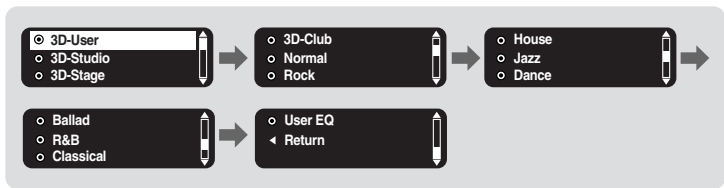
- Normal : To play all the files in order one time.
- Repeat One : To repeat one file.
- Repeat All : To repeat all files.
- Shuffle All : To play files at random.
- Intro : To play the first few seconds of a music file.
- Return : To move to a previous menu

Setting the EQ mode

Press the MENU button. Select [Settings] → [Sound Effect].

DNSe

- Use the **◀▶**, **▶▶** lever to move to the sound mode you want
- 3D-User → 3D-Studio → 3D-Stage → 3D-Club → Normal → Rock → House → Jazz → Dance → Ballad → R&B → Classical → User EQ



Note

- DNSe is a sound quality enhancement function for MP3 players developed by Samsung and provides 3D and Bass Enhance modes. 3D provides stereophonic surround effect and Bass Enhance reinforces bass sound of music.

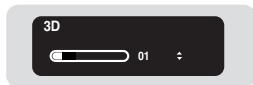
Setting the EQ mode

3D User Setting

3D User Setting is available only when the DNSe is set to 3D-User.

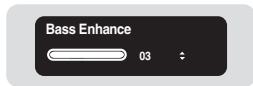
[3D]

- Use the **◀◀**, **▶▶** lever to move to the 3D level you want
- 3D level can be set within the range of off to 5.



[Bass Enhance]

- Use the **◀◀**, **▶▶** lever to move to the bass enhance level you want
- Bass Enhance level can be set within the range of off to 3.

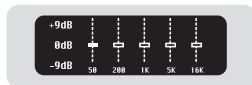


Setting the EQ mode

User EQ Set

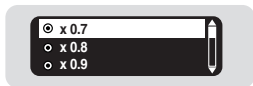
- Select User EQ in DNSe to set the equalizer to your preference in the User EQ Set.
- Use the **←**, **+** button to move to left or right and use the **⏪**, **⏩** lever to adjust the level.

Press the **NAVI** button after completing the setting.



Setting the Play Speed

- 1 Press the MENU button. Select [Settings] → [Play Speed].
- 2 Use the **⏪**, **⏩** lever to move to the desired Play Speed and press the NAVI button.
 - The smaller the number is, the slower play speed is, and vice versa. Play speed x1.0 is normal play speed.



Note

- If the power is turned off and on, the play speed is reset to the normal (x1.0).

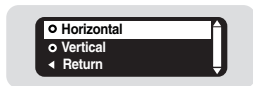
Display Settings

Press the MENU button. Select [Settings] → [Display].

Scroll

[Type]

- Use the **⏪**, **⏩** lever to select the scroll type.
- **Horizontal** : Music title moves horizontally.
- **Vertical** : Music title moves vertically.



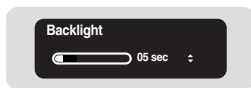
[Speed]

- Use the **⏪**, **⏩** lever to set the scroll speed from X1, X3, X5 to adjust the speed of the track title movement.



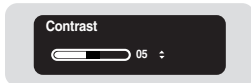
Backlight

- Use the **◀▶** lever to set the Backlight-Off time.
- You can set the Backlight Time to 5Sec, 15Sec, 30Sec, 1Min, or Always On.
- When set to Always On, the light stays on continuously.



Contrast

- Use the **◀▶** lever to set the contrast from 00 to 10 to adjust the brightness of the screen.



Tag

- Use the **◀▶** lever to select Tag On or Off.
- **On:** Display the Tag information if the music file has Tag information. Display the file name if the music file has no Tag information.
- **Off:** Display the name of music file.



Bitrate

- Use the **◀▶** lever to select Bitrate On or Off.
- **On:** Bit rate is displayed at the top of the screen.
- **Off:** The total number of tracks is displayed at the top of the screen.



Language Settings

Press the MENU button. Select [Settings] → [Language].

Menu

- Use the ◀◀, ▶▶ lever to select the language for displaying menu.
- Chinese(S) → Chinese(T) → English → French → German → Hungarian → Italian → Japanese → Korean → Russian → Spanish



ID3-Tag

- Use the ◀◀, ▶▶ lever to select the language for displaying Tag information.
- Chinese(S) → Chinese(T) → English → French → German → Hungarian → Italian → Japanese → Korean → Russian → Spanish



Note

- What is an ID3 Tag ?
This is what is attached to an MP3 to carry information relevant to the file, such as the title, artist, album, year, genre and a comment field.
- Supported languages can be changed or added.

Recording Settings

Press the MENU button. Select [Settings] → [Record].

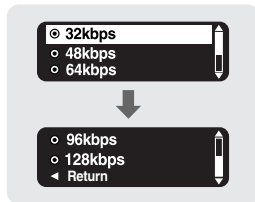
Bit Rate

- Use the **⏮, ⏭** lever to select the recording bit rate.
- When recording music into an MP3 file, you can select one of the following bit rates: 32Kbps, 48Kbps, 64Kbps, 96Kbps and 128Kbps.



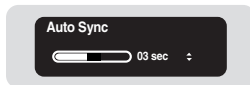
Note

- For voice recording, bit rate is fixed to 32Kbps.



Auto Sync

- Use the **⏮, ⏭** lever to select the Auto Sync Time from Off to 5 seconds.
- AutoSync Time is a function for separating and saving MP3 files when there is no sound for a set time during MP3 recording.
- In SYNC 1 setting, recording stops when there is no sound for over 1 second during recording.
- If AutoSync Time is set to Off, recording keeps going even if there is no sound, and then it is saved as one file.

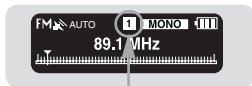


FM Radio Settings

Press the MENU button. Select [Settings] → [FM Radio].

Auto Preset

- If you select Auto Preset, frequencies within the range of 87.5MHz to 108.0MHz are automatically selected and stored.
- Frequencies are automatically stored, starting from 1.



Number of frequencies saved.

FM Region

- Use the ◀▶ lever to select your FM reception region.
- Worldwide : Search FM frequencies between 87.50MHz to 108.00MHz in increments of 50 kHz.
- US : Search FM frequencies between 87.5MHz to 108.0MHz in increments of 100 kHz.
- Japan: Search FM frequencies between 76.0MHz to 108.0MHz in increments of 100 kHz.

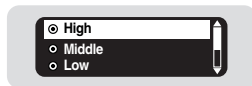


Note

- The default FM region setting may vary depending on the target region of the player.

FM Search Level

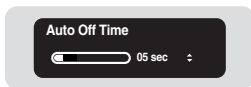
- Use the ◀▶ lever to select the FM tuner sensitivity.
- The higher the FM search level, the more frequencies can be received.
- High → Middle → Low



Press the MENU button. Select [Settings] → [Time].

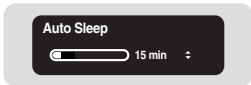
Auto Off Time

- Use the **⏮**, **⏭** lever to set the Power-Off time from off to 5 minutes.
- If no button is pressed after play stops, the player will automatically turn off after the time you set.
- When set to Off, the function is disabled.



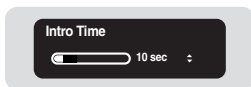
Auto Sleep

- Use the **⏮**, **⏭** lever to set the Sleep time.
- Off, 15, 30, 60, 90 and 120 minutes are available for sleep time, and it will automatically turn off after the time you set.
- When set to Off, the function is disabled.



Intro Time

- Use the **⏮**, **⏭** lever to set the Intro time to 10, 20, 30, or 60 seconds.
- When you select the Intro function, the beginning of all files will be played back for the seconds you set.



System Settings

Press the MENU button. Select [Settings] → [System].

Deleting a file

1 Select Delete from the System menu.

2 Use the **◀▶** lever to move to the file you want to delete and then press the **NAVI** button.

3 Use the **◀▶** lever to move to Confirm and then press the **NAVI** button.

- The selected file will be deleted.

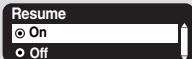


Resume

● Use the **◀▶** lever to select Resume On or Off.

● **On**: Play back music from the part of music you listened last if you play it back again after stopping.

● **Off**: Play back music from the beginning of music if you play it back again after stopping.



Note

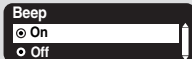
- If the remaining battery charge is not enough, the Resume function will not work.

Beep

● Use the **◀▶** lever to select Beep On or Off.

● **On** : Beep sounds whenever you press the button.

● **Off** : No beep sounds when you press the button.



Note

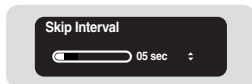
- No beep sounds during music playback.

Skip Interval

- Use the **⏮, ⏭** lever to set the skip interval from 5sec to 1min.
- If you turn the **⏮, ⏭** lever in music mode, you can search a track by a set time.
- If you set the Skip Interval to 1 Track, then turn the **⏮, ⏭** lever, the previous or next track will be selected.

Note

- For a VBR or Ogg file, the Skip Interval time may not be exact.

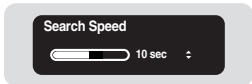


Search Speed

- Use **⏮, ⏭** lever to set the Search Speed from 1sec to 1min.
- When you press and hold **⏮, ⏭** lever to scan a track, you can adjust the scanning speed.

Note

- For a VBR or Ogg file, the search speed may not be exact.



Default vol

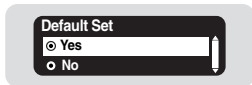
- Use the **⏮, ⏭** lever to set the default volume from 0 to 30(Max).
- If the power is turned on again after having adjusted the volume above the default value, music is played at the default volume.
- If the power is turned on again after the volume was set to within the default value, the music is replayed at the previously played volume.



System Settings

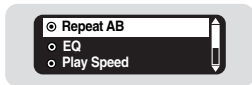
Default Set

- Use the **◀▶** lever to select Default Set Yes or No.
- **Yes** : All settings selected will be initialized.
- **No** : All settings selected will remain as they are.



User Button Mode

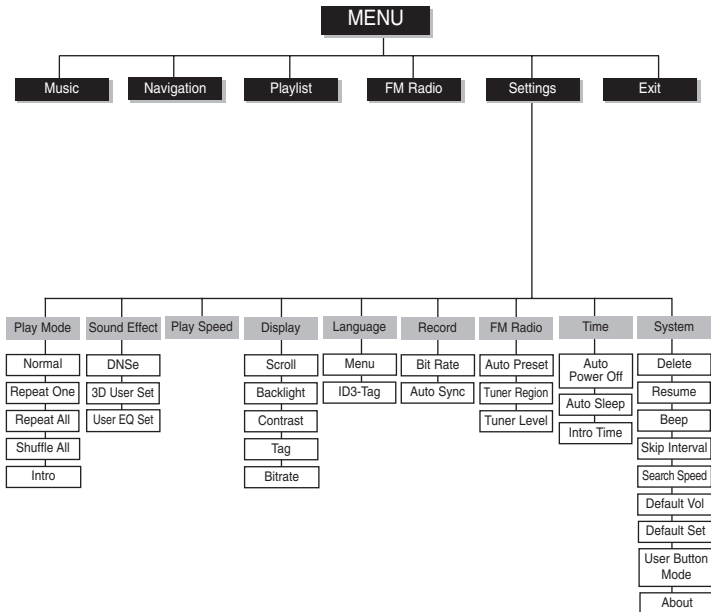
- Use the **◀▶** lever to select an item for the USER button setting.
- Repeat AB: If you press the USER button briefly, you can set a section to be played repeatedly during music or voice playback.
- EQ: If you press the USER button, you can select the sound mode you want.
- Play Speed: If you press the USER button, you can adjust the play speed.



About

- If you select About, you can check version information, total number of tracks and remaining capacity.

MENU Table



- Use the **⏮**, **⏭** lever and NAVI button to move and select.

The software doesn't work

- Refer to the System Requirements
-

The player does not work and the LCD displays nothing.

- Check the battery capacity
 - Connect the player to PC and run YP-T55 Updater in the desktop to update the player.
-

In PLAY mode, music is not played after pressing the ►|| button

- Check to see if MP3 or WMA files are saved in the built-in memory.
 - Check to see if the HOLD button is locked.
-

Files cannot be downloaded.

- Check to see if the driver is installed correctly in the computer.
 - Check the connection between the player and PC.
 - Operating system limits the number of files you can save.
Please save your music files by creating a subfolder.
 - Check if the memory is full.
-

Backlight does not work.

- Check the backlight setup.
- When the battery power is low, the backlight will go out.

The player keeps being turned off.

- In Stop mode, the power is automatically turned off after ten seconds (changes depending on settings).
- Check to see if there are files saved in it.

Something's wrong with play time displayed during Play mode.

- Check to see if a VBR file is playing.

LCD window is dark

- Check the Contrast setting.

The file name is not displayed correctly.

- Move to [Settings] → [Language] → [ID3-Tag] in the Menu and then change the language setting.

There is a file saved in the player, but "No File" appears in the screen.

- After checking whether the folder is played, use the Navigation function to change the folder.
- After connecting it to PC, execute YP-T55 Updater in the desktop to update the product.

I cannot properly connect it to PC.

- Win98SE : Try to connect again after installing the driver.
- WinME : Remove the driver program and then select the Start and then Windows Update on the Desktop. After selecting important update and service pack, execute update all.
- Win2000/XP : Try to connect it again after rebooting the computer.

Specifications

Model	YP-T55
Voltage	1.5V X 1 (AAA/LR03 size alkaline battery)
Playing time	lasts up to 18hours (MP3 128 Kbps, Volume 15, Normal Sound Mode)
Dimensions/Weight	23 X 70 X 23 mm / 45 g
Case	Plastic/Aluminum
Noise Ratio	90dB with A FILTER
Earphones Jack Output Power	15mW/CH (16 Ω)
Output Frequency Range	20Hz~20kHz
Operating Temperature Range	-5 ~ +35°C(23~95°F)
FM Frequency	87.50 ~ 108.00 MHz
FM Signal to Noise Ratio	60dB
FM T.H.D	1%
FM Useable Sensitiivity	10dB μ
File Support	MPEG1/2/2.5 Layer3(8Kbps ~ 320Kbps, 8KHz ~ 48KHz) WMA (48Kbps ~ 192Kbps, 8KHz ~ 48KHz), Audio ASF (8Kbps ~ 192Kbps, 8KHz ~ 48KHz), Ogg
Supported Number of Files and folders	File: Max. 2000 Folder: Max. 200

The product unit accompanying this user manual is licensed under certain intellectual property rights of certain third parties. This license is limited to private non-commercial use by end-user consumers for licensed contents. No rights are granted for commercial use. The license does not cover any product unit other than this product unit and the license does not extend to any unlicensed product unit or process conforming to ISO/IEC 11172-3 or ISO/IEC 13818-3 used or sold in combination with this product unit. The license only covers the use of this product unit to encode and/or decode audio files conforming to the ISO/IEC 11172-3 or ISO/IEC 13818-3. No rights are granted under this license for product features or functions that do not conform to the ISO/IEC 11172-3 or ISO/IEC 13818-3.

— EUROPE ONLY —

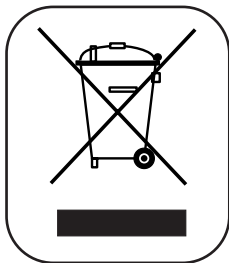
This marking shown on the product or its literature, indicates that it should not be disposed with other household wastes at the end of its working life.

To prevent possible harm to the environment or human health from uncontrolled waste disposal, please separate this from other types of wastes and recycle it responsibly to promote the sustainable reuse of material resources.

Household users should contact either the retailer where they purchased this product, or their local government office, for details of where and how they can take this item for environmentally safe recycling.

Business users should contact their supplier and check the terms and conditions of the purchase contract.

This product should not be mixed with other commercial wastes for disposal.



Contact SAMSUNG WORLD WIDE

If you have any questions or comments relating to Samsung products, please contact the SAMSUNG customer care center.

Country	Customer Care Center	Web Site
CANADA	1-800-SAMSUNG (7267864)	www.samsung.ca
MEXICO	01-800-SAMSUNG (7267864)	www.samsung.com/mx
U.S.A	1-800-SAMSUNG (7267864)	www.samsung.com
ARGENTINE	0800-333-3733	www.samsung.com/ar
BRAZIL	0800-124-421	www.samsung.com/br
CHILE	800-726-7864(SAMSUNG)	www.samsung.com/cl
COSTA RICA	0-800-507-7267	www.samsung.com/latin
ECUADOR	1-800-10-7267	www.samsung.com/latin
EL SALVADOR	800-6225	www.samsung.com/latin
GUATEMALA	1-800-299-0013	www.samsung.com/latin
JAMAICA	1-800-234-7267	www.samsung.com/latin
PANAMA	800-7267	www.samsung.com/latin
PUERTO RICO	1-800-682-3180	www.samsung.com/latin
REP. DOMINICA	1-800-751-2676	www.samsung.com/latin
TRINIDAD & TOBAGO	1-800-7267-864	www.samsung.com/latin
VENEZUELA	1-800-100-5303	www.samsung.com/latin
BELGIUM	02 201 2418	www.samsung.com/be
CZECH REPUBLIC	844 000 844	www.samsung.com/cz
DENMARK	38 322 887	www.samsung.com/dk
FINLAND	09 693 79 554	www.samsung.com/fi
FRANCE	08 25 08 65 65 (0,15 /min)	www.samsung.fr
GERMANY	01805 - 121213 (0,12/Min)	www.samsung.de

Country	Customer Care Center	Web Site
HUNGARY	06 40 985 985	www.samsung.com/hu
ITALIA	199 153 153	www.samsung.com/it
LUXEMBURG	02 261 03 710	www.samsung.lu
NETHERLANDS	0900 20 200 88	www.samsung.com/nl
NORWAY	231 627 22	www.samsung.com/no
POLAND	0 801 801 881	www.samsung.com/pl
PORTUGAL	808 200 128	www.samsung.com/pt
SLOVAKIA	0850 123 989	www.samsung.com/sk
SPAIN	902 10 11 30	www.samsung.com/es
SWEDEN	08 585 367 87	www.samsung.com/se
U.K	0870 242 0303	www.samsung.co.uk
RUSSIA	8-800-200-0400	www.samsung.ru
UKRAINE	8-800-502-0000	www.samsung.com/ur
AUSTRALIA	1300 362 603	www.samsung.com/au
CHINA	800-810-5858 , 010- 6475 1880	www.samsung.com.cn
HONG KONG	2862 6001	www.samsung.com/hk
INDIA	3030 82821600 1100 11	www.samsung.com/in
INDONESIA	0800-112-8888	www.samsung.com/id
JAPAN	0120-327-527	www.samsung.com/jp
MALAYSIA	1800-88-9999	www.samsung.com/my
PHILIPPINES	1800-10-SAMSUNG (7267864)	www.samsung.com/ph
SINGAPORE	1800-SAMSUNG (7267864)	www.samsung.com/sg
THAILAND	1800-29-3232 / 02-689-3232	www.samsung.com/th
TAIWAN	0800-329-999	www.samsung.com/tw
VIETNAM	1 800 588 889	www.samsung.com/vn
SOUTH AFRICA	0860 726786 (SAMSUNG)	www.samsung.com/za
U.A.E	800SAMSUNG (7267864)	www.samsung.com/mea

Free Manuals Download Website

<http://myh66.com>

<http://usermanuals.us>

<http://www.somanuals.com>

<http://www.4manuals.cc>

<http://www.manual-lib.com>

<http://www.404manual.com>

<http://www.luxmanual.com>

<http://aubethermostatmanual.com>

Golf course search by state

<http://golfingnear.com>

Email search by domain

<http://emailbydomain.com>

Auto manuals search

<http://auto.somanuals.com>

TV manuals search

<http://tv.somanuals.com>