

SAMSUNG



YP-Z5F

For Your Safety

Read this manual carefully to ensure proper use of the product and to avoid any danger or physical damage.



WARNING

Failing to heed the product instructions may cause serious injury.

Product Use

Improper use can result in explosion, fire or electric shock.



Do not disassemble, repair or modify this product on your own.



Do not get the product wet or drop it in water.

If the product gets wet, do not switch it on. Contact a Service Center.



Do not place the product in damp, dusty or sooty areas, as it could result in fire or electric shock.



Do not leave the product in areas above 35°C(95°F) (such as a sauna or inside a parked car).

During the summer the temperature inside a car may rise up to 80°C(176°F).

To avoid your hearing damage

Using the earphone or headphone for an extended time can cause a serious damage to your hearing.

If you are exposed to a sound in higher than 85db for an extended time, you will be adversely affected on your hearing. The higher the sound is, the more seriously damaged your hearing is (an ordinary conversation is made in 50 to 60 db and the noise level on the road is approximately 80 db). You are strongly advised to set the volume level to medium (the medium level is usually less than 2/3 of the maximum).

If you feel a ringing in the ear(s), lower the volume or stop using the earphone or headphone.

To avoid a risk of traffic accident

Do not use the earphone while you are driving a bicycle, automobile or motorcycle.

Otherwise it can cause a serious accident and, furthermore, it is prohibited by the law in some areas.

Using the earphone on the way, in particular, on the crosswalk can lead to a serious accident.

For your safety, make sure the earphone cable should not get in the way of your arm or other surrounding objects while you are taking exercise or a walk.



CAUTION

Failure to follow all instructions lead to physical injuries or damage to the product.

Product Use

Take care to avoid product malfunction and physical damage.



When wearing the product around your neck, take care not to exert excessive force on the neck string.

Management of Important Data



Be sure to backup important data.

Please be aware that we claim no responsibility for damage from data loss due to breakdown, repair or other causes.

Avoid malfunction



Do not cause excessive impact on the product by dropping it. Do not place heavy objects on top of the product.



Prevent any foreign particles or dust from entering into the product.



Always use the accessories provided by or approved by Samsung.



Do not spray water on the product. Never clean the product with chemical substances such as benzene or thinner, as it may cause fire, electric shock or deteriorate the surface.



Do not place the product near magnetic objects, as it may cause a malfunction.

Contents

For Your Safety	2
Contents	4

Chapter 1. Preparation

Product Features	7
Checking the Product and Accessories ...	8
Components	8
Screen Display Information	10
Button Functions	11
Charging the battery	13
Basic Use	14

Chapter 2. Loading Your Desired File

Loading Your Desired File	18
Loading Your Desired File.....	18
Installing Media Studio.....	19
Connecting to your PC.....	21
Adding Files/Folders in Media Studio ...	22
Adding Files/Folders in Media Studio with Autoscan.....	24
Transferring Files with Media Studio ...	26
Using as a Removable Disk	28
Disconnecting from your PC.....	29

Chapter 3. Multimedia function

Listening to Music	31
Listening to Music.....	31
To Play a Playlist	34
Shuffle Play (Random Repeat).....	35
Checking the Music Information	38
Picture Viewing	39
Picture Viewing.....	39
Picture Enlarging/Slideshow Viewing	40
Listening to FM Radio	41
Listening to FM Radio	41
Setting a Frequency	43
Setting FM Radio.....	46
Recording.....	48
Voice Recording	48

Chapter 4. Setup

Setup	51
Audio Setup	51
Display Setup	52
Slideshow Setup	53
Repeat Setup.....	54
Timer Setup	55
Language Setup	56
Reset	57
Checking the System Information.....	58

Chapter 5. Troubleshooting

System Reset	60
Troubleshooting	61

Chapter 6. Appendix

Menu Tree	65
Manual USB Driver Installation	66
Product Specifications	69

Chapter 1. Preparation

Product Features	7
Checking the Product and Accessories	8
Components	8
Screen Display Information	10
Button Functions	11
Charging the battery	13
Basic Use	14

Product Features

Freedom of my favorite selection with your player!

- You can easily search for music files by the artist, album or genre and make you own selection of favorite songs in Playlist.

Longer Play Time and Shorter Downloading!

- A fully charged battery can operate the player in a maximum of 39 hours.
- The player supports USB 2.0 capability, much faster than USB 1.1, to enable faster communication with the PC.

Supporting Various File Formats!

- Supports various file formats including MP3, WMA and Ogg.
- You can enjoy photo files in different formats on the display by converting them into JPG.

3D Surround Sound! High-Definition Quality!

- The player has built-in DNSe (Digital Natural Sound engine), Samsung's unique sound technology for richer sound.

Touchpad Mechanism!

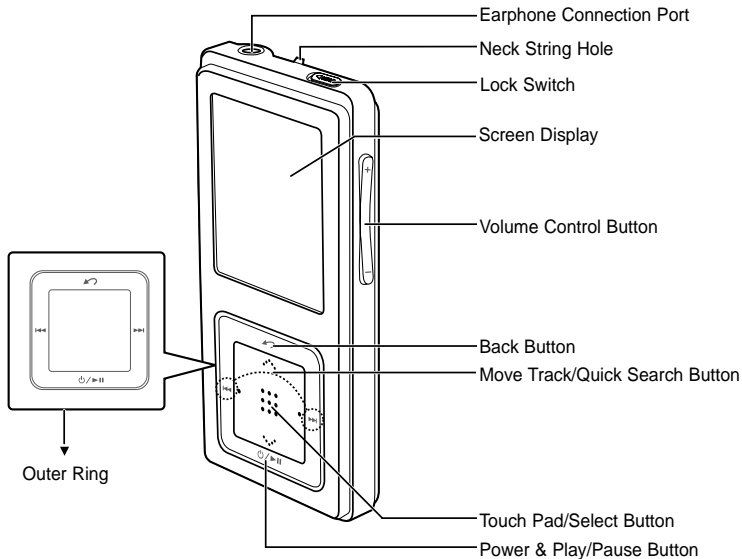
- Put your finger on the touchpad and move or press it slightly to select a file or function that you want to use.

Ergonomic Design!

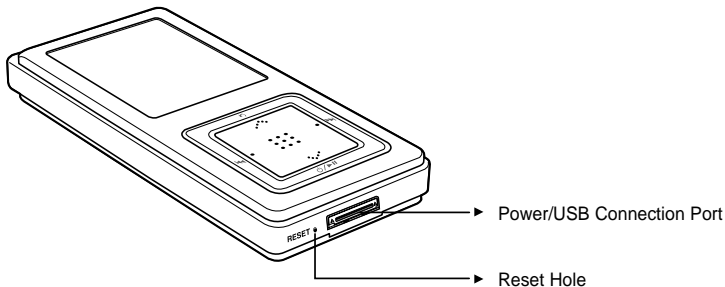
- Experience the good sense of grip and easy operation.

Components

Front, Right Side and Top



Bottom



Checking the Accessories

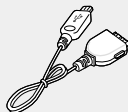
The following diagrams are a guide and may differ slightly from the actual product appearance.



Player



Earphones



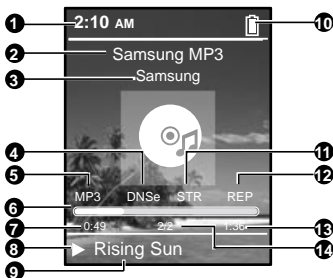
USB Cable



Installation CD

- Design of accessories is subject to change for the purpose of improvement, without notice.
Download from Www.Somanuals.com. All Manuals Search And Download.

Screen Display Information



1 Current Time Display

2 Album Title Display

3 Album Display

4 Sound Mode Display

5 File Type Display
(MP3, WMA etc)

6 Play Status Bar

7 Play Time Display

8 Play/Pause Display

9 Music Title Display

10 Battery Display

11 Street Mode Display

12 Repeat Play Display

13 Total Play Time Display








14 Current Music Number/
Total Number Display



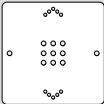
NOTE

- The screen pictures are for illustration purposes only. The actual screen may differ.

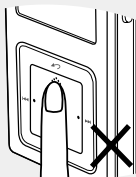
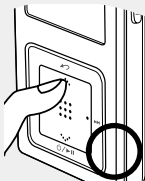
Button Functions

Buttons	Functions and Use
	<ul style="list-style-type: none"> ■ Long press for power on/off. ■ Short press for play/pause.
	<ul style="list-style-type: none"> ■ Long press to move to the Menu screen. ■ Short press to move to the previous screen.
	<ul style="list-style-type: none"> ■ Long press to scan to a point on the current track. ■ Short press to move to the previous track or to play the current track from the start.
	<ul style="list-style-type: none"> ■ Long press to scan to a point on the current track. ■ Short press to move to the next track.
	<ul style="list-style-type: none"> ■ Push in the direction of the arrow to lock the button functions.
	<ul style="list-style-type: none"> ■ Press with a pointed object to reset.
	<ul style="list-style-type: none"> ■ Press to reduce/increase the volume.

Button Functions (Continued)

Buttons	Functions and Use
	<ul style="list-style-type: none"> ■ Moving up, down, left and right and Function Selection <ul style="list-style-type: none"> ⬆ Tap on the top or bottom side to move up or down by one selection. ⬅ Tap on the left or right side to move left or right by one selection (Picture mode). ⬆ Tap and hold on top or bottom side to move up or down continuously. ⋮ Press the center of the Touchpad to select the function and move to the next screen.

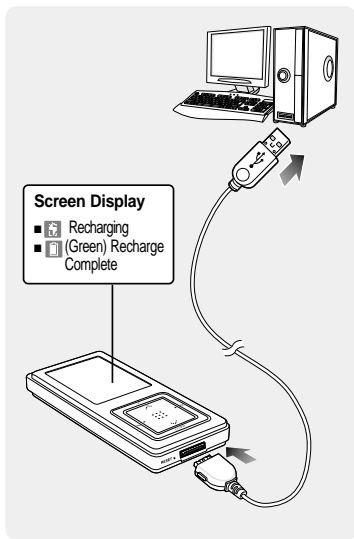
* The touchpad works better when pressed lightly with a fingertip.



- Do not use any sharp object other than your fingers to operate the touchpad. Otherwise, touchpad may be damaged.
- Do not press on the [Touch Pad] if your fingers are not clean.

Charging the battery

Fully charge the battery before using the player for the first time or when it has not been used for a while.



- 1** Connect the USB cable to the USB port () on your PC.
- 2** Connect the other end of the USB cable to the Power/USB Connection Port on the bottom of the player.
 - <Connected> appears on the screen display of the player.
 - When connected with the USB cable, it takes about 4 hours for a full charge although this may vary depending on your PC environment.

Battery Use

- Recharge and store within the temperature range of 5°C~35°C(40°F~95°F).
- Do not overcharge (longer than 12 hours). Excessive charging or discharging may shorten the battery's life.
- Battery life naturally shortens slowly over time as it is a consumable item.

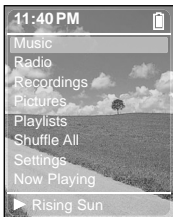


NOTE

- Charging may take more time if there is another USB device connected to your PC.
- If the player displays "low battery", actual charging may start after a short period of time when you connect to your PC.

Basic Use

Turning the Power On & Off



Turning the Power On

Press and hold the [⏻ / ▶] button

- Power is turned on.

Turning the Power Off

Press and hold the [⏻ / ▶] button

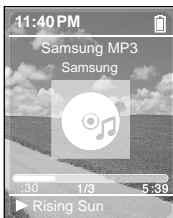
- Power is turned off.



NOTE

- Screen Display window is automatically turned off when none of the buttons have been pressed for a preset period of time (Default: 1 minute) in the pause mode. You can set the time duration before closing the Screen Display window. ▶page 52

Playing Music



1 Press and hold the [⏪] button to move to the Menu screen.

2 Tap on the [⋮] to select <Music>, then press the [Touch Pad].

- The Music Menu will appear.

3 Tap on the [⋮] to select a music file of your choice.

4 Press the [Touch Pad].

- The music file will begin playing.



NOTE

- Press the [⏪] button to move to the previous screen.
- Press and hold the [⏪] button to move to the Menu screen.

Download from www.Somanuals.com. All Manuals Search And Download.

Volume Control



Press the [+ , -] button on the side of the unit.

- The Volume Status Bar will appear.
- Press the + button to increase the volume or the – button to decrease it.

Lock Function

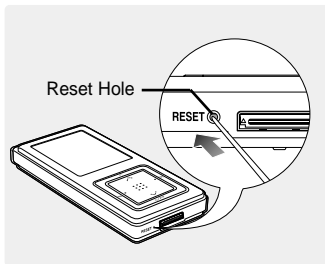


In Hold mode, all buttons are disabled. This function is useful when you are walking or jogging.

- 1** Push the [HOLD] button on the top of the unit in the direction of the arrow.
- 2** Push the [HOLD] button in the opposite direction of the arrow to release the Lock function.

Basic Use (Continued)

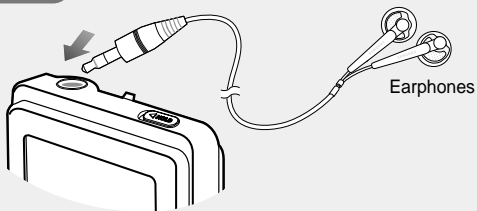
Reset Function



If a product malfunction occurs, you can re-initialize the system by pressing the Reset hole. ►page 60

Earphone Connection

► Top

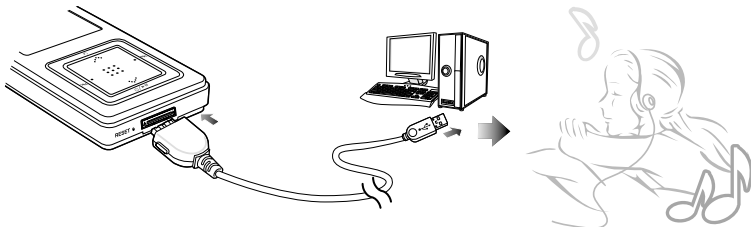


Chapter 2. Loading Your Desired File

Loading Your Desired File	18
Loading Your Desired File.....	18
Installing Media Studio.....	19
Connecting to your PC.....	21
Adding Files/Folders in Media Studio ...	22
Adding Files/Folders in Media Studio with Autoscanner.....	24
Transferring Files with Media Studio	26
Using as a Removable Disk	28
Disconnecting from your PC	29

Loading Your Desired File

To play music files in the player, first transfer music files in MP3, WMA, Ogg and other supported formats from your PC.



Follow the steps below to transfer files.

Transferring Music Files

- Transfer files on your PC to the player using Media Studio ► Page 26
- Transfer files on your PC to the player using the “Copy” and “Paste” functions (removable disk) ► Page28

Installing Media Studio

Use Media Studio to transfer music files from your PC to the player.



If Media Studio is not installed automatically

CAUTION

- Install the program on PCs running Windows 2000 or Windows XP after logging on with the Administrator account. Please refer to the PC user manual on how to log on with the Administrator account.

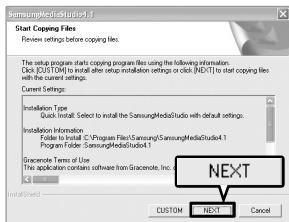
Before you start!

Insert the installation CD provided with the player into the CD-ROM drive.



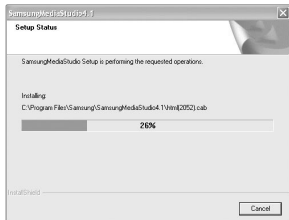
1 Click <Install now>.

Installing Media Studio (Continued)



2 Click <NEXT>.

- Media Studio installation starts.



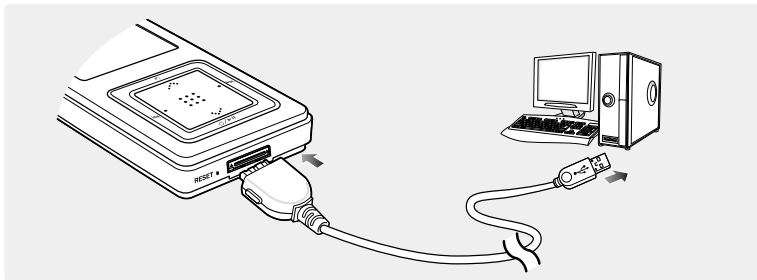
3 After installation is complete, click <Exit>.

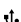
- An icon is created on the desktop after installation is complete and Media Studio starts.
- If the Autoscan Confirm window appears, refer to page 25 and customize settings.

Connecting to your PC

Before you start!

Use the USB Cable provided when connecting the product to your PC.



- 1** Connect the USB cable to the USB port () on your PC.
- 2** Connect the other end of the USB cable to the Power/USB Connection Port on bottom of the player.
 - <Connected> appears on the screen display of the player.

PC Requirements

For use in conjunction with your PC, the following is required:

- Pentium 300MHz or higher
- Windows 98SE/2000/XP
- 100MB of free hard disc space
- USB Port 2.0
- DirectX 9.0 or higher
- CD Rom Drive (2X or higher)

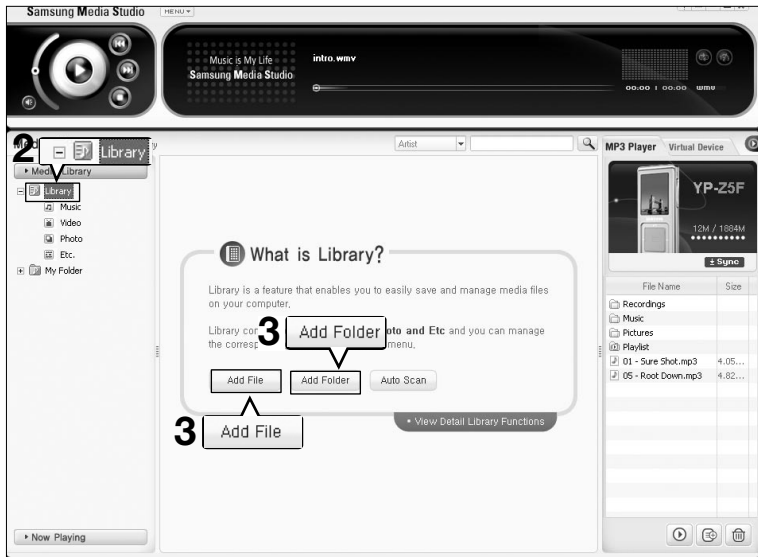


- If you connect the player through a USB hub, the connection may be unstable. Please connect the player to the computer directly.

CAUTION

Download from www.Softmanualse.com. All Manuals Search And Download.

Adding Files/Folders in Media Studio



Please refer to Help for more information on how to use Media Studio.

- Click <MENU> → <Help> → <Help> from the menu on the top of the Media Studio program.

Before you start!

- Connect the player to your PC.
- Media Studio must be installed on your PC.

- 1 Media Studio will automatically start when the player is connected to your PC.**
 - If the program does not start automatically, double Click the Media Studio icon on the desktop.
- 2 Click the <Media Library> → <Library> tab on the left of the Media Studio window.**
 - The <Add File>/<Add Folder>/<Auto Scan> taps will appear.

To add files

- 3 Click <Add File>.**
 - The Open window will appear.
- 4 Select the files to add and click <Open>.**
 - The selected files are added to the list.

**To add folders**

- 3 Click <Add Folder>.**
 - The Browse folder is window will appear.
- 4 Select the folder to add and click <OK>.**
 - The selected folder is added to the list.



Adding Files/Folders in Media Studio with Autoscanner

The screenshot displays the Samsung Media Studio software interface. At the top, there is a playback control area with a play button and a progress bar. Below this is the 'Media Library' section, which includes a sidebar with categories like Music, Video, Photo, and Etc. The main area shows a 'What is Library?' dialog box with instructions and three buttons: 'Add File', 'Add Folder', and 'Auto Scan'. A callout box with the number '3' points to the 'Auto Scan' button. To the right, there is an 'MP3 Player' section showing a virtual device 'YP-Z5F' and a list of files.

3 Auto Scan

Library Functions

File Name	Size
Recordings	
Music	
Pictures	
Playlist	
01 - Sure Shot.mp3	4.05...
05 - Root Down.mp3	4.82...

Before you start!

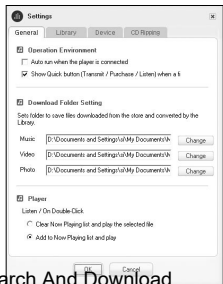
- Connect the player to your PC.
- Media Studio must be installed on your PC.

- 1 Media Studio will automatically start when the player is connected to your PC.**
 - If the program does not start automatically, double Click the Media Studio icon on the desktop.
- 2 Click the <Media Library> → <Library> tab on the left of the Media Studio window.**
 - The <Add File>/<Add Folder>/<Auto Scan> taps will appear.
- 3 Click <Auto Scan>.**
 - The Autoscan window will appear.
- 4 Click <OK>.**
 - Automatically scans files and adds them to the library.
 - The first time you use Media Studio, the Autoscan Confirm window and Options window appear accordingly. Set the options, then click <OK> to start Autoscan.

How to setup Autoscan Options

Click <MENU> → <Tools> → <Environment Settings> from the top of the Media Studio Window and then click the <Library> tab.

- Select the range and file type to autoscan.



Transferring Files with Media Studio



NOTE

- Music recognition technology and related data are provided by Gracenote and Gracenote CDDB® Music Recognition ServiceSM.
- CDDB is a registered trademark of Gracenote. The Gracenote logo and logotype, the Gracenote CDDB logo and logotype, and the "Powered by Gracenote CDDB" logo are trademarks of Gracenote. Music Recognition Service and MRS are service marks of Gracenote.

Before you start!

- Connect the player to your PC.
- Media Studio must be installed on your PC.

- 1 Media Studio will automatically start when the player is connected to your PC.**
 - If the program does not start automatically, double click the Media Studio icon on the desktop.
- 2 Double Click a folder of your choice from the Device Connection window on the right of the Media Studio window.**
 - Files in the folder will be displayed.
- 3 Click the <Media Library> tab on the left of the Media Studio window.**
- 4 Click <Music>.**
 - A file list will appear in the window in the center.
- 5 Click the checkbox in the list in the center window to select the music files to transfer.**
 - The Transmit icon will appear.
- 6 Click <Transmit>.**
 - The selected files are transferred to the player.

**CAUTION**

- Do not disconnect the USB Connection Plug during file transfer. This may cause damage to the player or your PC.

**NOTE**

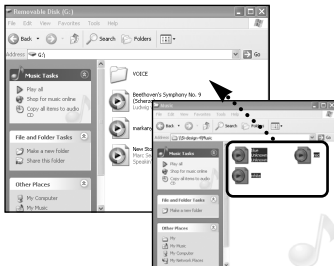
- You can use <Media Studio> to create your selection of music files by the folder before downloading it to the player. Then, the selection will be added to the <Playlists> of the player. For more information on creating a playlist in <Media Studio>, see the Help section.
- Any photo file will be automatically converted into JPG before downloading. For further details, see the Help section.

Using as a Removable Disk

You can use the player as a removable storage device.

Before you start!

- Connect the player to your PC.



- 1 Open files/folders to transfer from your PC.
- 2 Open <My Computer> → <Removable Disk> from the desktop.
- 3 Select the files/folders to transfer from your PC and drag and drop them to a folder of your choice in the <Removable Disk>.
 - Selected folders or files are transferred to main body. Drag and drop music files to <Music> folder and picture files to <Pictures> folder.



CAUTION

- It may impair the main body or PC to disassemble USB cable during transferring file. After message is disappeared, perform safety dismount first, and then disassemble USB cable.
- The order of music files displayed in Windows Explorer may differ from the play order on your device.
- If you move a DRM file(charged file) to the removable disk, the file will not be played.



NOTE

- Select the file to save and drag-and-drop it into the removable disk icon.(In numerical, alphabetical order) If you change the name of music files in Windows Explorer like 001***, 002***..., music files will be played in the order of number indicated.

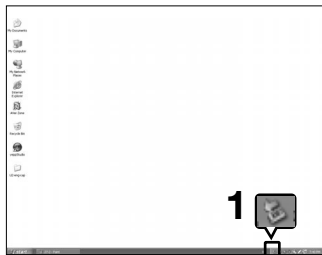
■ What is DRM?


DRM (Digital Rights Management) is a technology and service to prevent the illegal use of digital contents and protect the profit and rights of copyright holders. DRM files are charged music files applied with the illegal copy protection technology of legally purchased MP3 music.

Download from www.Somanuals.com. All Manuals Search And Download.

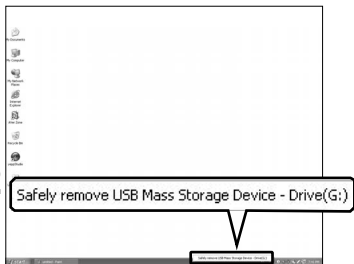
Disconnecting from your PC

Follow the steps below to prevent damage to the player and data when disconnecting from your PC.



1 Place the mouse cursor on top of the  icon on the taskbar at the bottom right corner of the desktop and click the left mouse button.

2 Click the <Safely Remove USB Mass Storage Device Drive> message.



3 Disconnect the player from your PC.



- Do not disconnect the player from the PC during file transfer. This may cause damage to data and the player.
- You cannot remove the hardware while files within the player are being played on your PC. Please retry after file playback is finished.

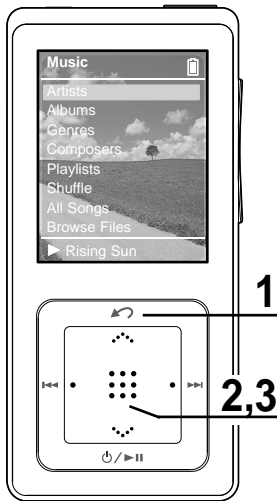
Chapter 3. | Multimedia Function

Listening to Music	31
Listening to Music.....	31
To Play a Playlist	34
Shuffle Play (Random Repeat).....	35
Checking the Music Information	38
Picture Viewing	39
Picture Viewing	39
Picture Enlarging/Slideshow Viewing	40
Listening to FM Radio	41
Listening to FM Radio	41
Setting a Frequency	43
Setting FM Radio.....	46
Recording	48
Voice Recording	48

Listening to Music

Before you start!

Connect the earphones, then switch on the player, and check the battery.



E.g. Playing by Artist

- 1** Press and hold the [] button to move to the Menu screen.
- 2** Tap on the [] to select <Music>, then press the [Touch Pad].
 - The Music Menu will appear.
- 3** Tap on the [] to select <Artists>, then press the [Touch Pad].

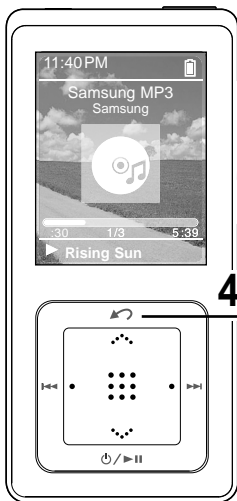
Music Menu

- <Artists> : To play by artist
- <Albums> : To play by album
- <Genres> : To play by genre
- <Composers> : To play by composer
- <Playlists> : To play by Playlist
- <Shuffle> : To play continuously in random order
- <All Songs> : To play in numeric or alphabetical order
- <Browse Files> : You can search for a folder or file in the music folder.


NOTE

- The music files compatible with the player are MP3, WMA and Ogg.
- MP1 or MP2 files which only have a changed extension to MP3, may not play on the player.
- A file without an ID3 Tag (Unknown) is displayed as [unknown].

Listening to Music (Continued)



4 Tap on the [. . .] to select an artist, then press the [Touch Pad].

- The albums for the artist will appear.

5 Tap on the [. . .] to select an album, then press the [Touch Pad].

- The music files for the selected album will appear.

6 Tap on the [. . .] to select a music file to play, then press the [Touch Pad].

- The music will start playing.
- The Play Screen can be changed by pressing the [Touch Pad].

To Pause

1 Press the [⏏ / ⏏] button while the music is playing.

- The music playback will be paused.

2 Press the [⏏ / ⏏] button again.

- The music will play from the point where it stopped.



NOTE

- Screen Display window is automatically turned off when none of the buttons have been pressed for a preset period of time (Default: 1 minute) in the pause mode. You can set the time duration before closing the Screen Display window. ▶page 52

To search within a track

- 1 Press and hold the [|◀◀] or [▶▶ |] button while the selected track is playing.**
 - It searches to the beginning or the end of the track.
- 2 Release the button at the point you wish to start.**
 - It starts playing from the point you release the button.

To Play from the beginning of the current track

Press the [|◀◀] button after 10 seconds of play.

- The current track starts playing from the beginning.

To play the previous/next track

Press the [|◀◀] button within 10 seconds of play.

- The previous track will start playing.

Press the [▶▶ |] button.

- The next track will start playing.



CAUTION

- When playing VBR files, the previous track may not play even if you press the [|◀◀] button within 10 seconds of the play.



NOTE

- Press the [|◀◀] button within 10 seconds of play to move to the previous track.

To Play a Playlist

Make your own Playlist by genre or artist.



To make your own Playlist

- 1** Press and hold the [↶] button to move to the Menu screen.
- 2** Tap on the [⋮] to select <Music>, then press the [Touch Pad].
 - The Music Menu will appear.
- 3** Tap on the [⋮] to select your desired music menu, then press the [Touch Pad].
 - Music list and file are displayed.
 - For music list, tap on the [⋮] to your desired music list, and press the [Touch Pad] to display file(s).
- 4** Tap on the [⋮] to select music file(s) to add to playlist, then Press and hold the [Touch Pad].
 - <Added to Playlist> is displayed in the bottom and selected music file blinks twice to be added in <Playlists> → <Mobile Playlist>.



CAUTION

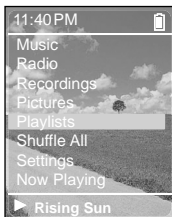
- Be sure to add file to Playlist when file is selected. It is not allowed to add file when you select to display information screen for running music or music list.




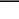



NOTE

- You can use <Media Studio> to create your selection of music files by the folder before downloading it to the player. Then, the selection will be added to the <Playlists> of the player. For more information on creating a playlist in <Media Studio>, see the Help section.
- To delete the file, which is set to playlist, tap on the [⋮] in <Playlists> → <Mobile Playlist> to select file to delete, and press and hold the [Touch Pad]. <Removed> appears in the bottom of screen and selected file is deleted.

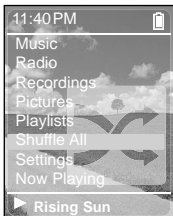
To Play a Playlist



- 1** Press and hold the [] button to move to the Menu screen.
- 2** Tap on the [] to select <Music>, then press the [Touch Pad].
 - The Music Menu will appear.
- 3** Tap on the [] to select <Playlists>, then press the [Touch Pad].
 - The Playlist(s) will appear.
- 4** Tap on the [] to select the playlist of your choice, then press the [Touch Pad].
 - The music files saved in the selected Playlist will appear.
- 5** Tap on the [] to select a music file to play, then press the [Touch Pad].
 - The music file will start playing.

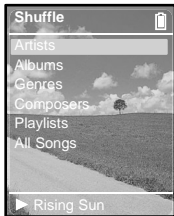
Shuffle Play (Random Repeat)

Shuffle Play All Music



- 1** Press and hold the [↶] button to move to the Menu screen.
- 2** Tap on the [⋮] to select <Shuffle All>, then press the [Touch Pad].
 - Music files will appear.
- 3** Tap on the [⋮] to select a music file to play, then press the [Touch Pad].
 - The file selected, then all music files contained on the player will start playing in random order.

Shuffle Play by Type



Shuffle Menu

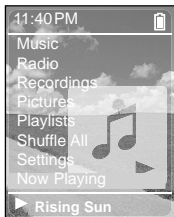
- <Artists> : To randomly repeat playback by artist
- <Albums> : To randomly repeat playback by album
- <Genres> : To randomly repeat playback by genre
- <Composers> : To randomly repeat playback by composer
- <Playlists> : To randomly repeat playback according to the playlist
- <All Songs> : To randomly repeat playback in numeric or alphabetical order

E.g. Shuffle Play by Artist

- 1** Press and hold the [↶] button to move to the Menu screen.
- 2** Tap on the [⋮] to select <Music>, then press the [Touch Pad].
 - The Music Menu will appear.
- 3** Tap on the [⋮] to select <Shuffle>, then press the [Touch Pad].
 - The Shuffle Menu will appear.
- 4** Tap on the [⋮] to select <Artists>, then press the [Touch Pad].
 - Artist list will appear.
- 5** Tap on the [⋮] to select an artist, then press the [Touch Pad].
 - The music files for the selected artist will appear in random order.
- 6** Tap on the [⋮] to select a music file to play, then press the [Touch Pad].
 - The music files under that particular <Artist> will start playing continuously in random order.

Checking the Music Information

You can move to the Music Info screen to check the music currently playing.



1 Press and hold the [] button to move to the Menu screen.

2 Tap on the [] to select <Now Playing>, then press the [Touch Pad].

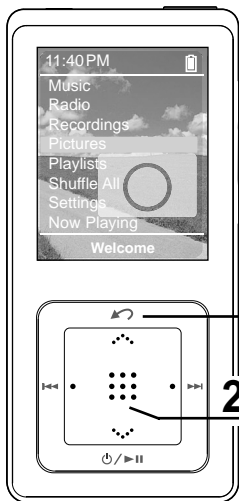
- The music information screen for the track currently playing will appear.



NOTE

- Pressing [Touch Pad] will cycle through various Now Playing screens.

Picture Viewing



1 Press and hold the [↶] button to move to the Menu screen.

2 Tap on the [⋮] to select <Pictures>, then press the [Touch Pad].

- The Picture Folder list will appear.
Tap on the [⋮] to select a folder, then press the [Touch Pad] to display the pictures.

3 Tap on the [⋮] to select the picture file of your choice, then press the [Touch Pad].

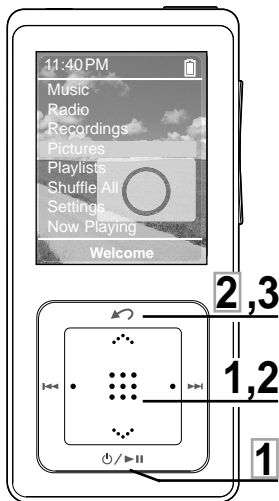
- The selected file will appear.
- Large pictures may take longer to display.



NOTE

- Press the [◀▶▶] button while viewing a picture to display the previous or next picture.
- Press and hold the [Touch Pad] button while viewing a picture to make it the background of the player.

Picture Enlarging/Slideshow Viewing



Picture Enlarging

- 1** Press the [Touch Pad] in the Picture Viewing mode.
 - The picture will be gradually enlarged (2x/3x/4x) each time the [Touch Pad] is pressed.
- 2** Touch the [Touch Pad] lightly and slide up,down,left or right to move around the enlarged picture.
 - You can move to the area of your choice.
- 3** Press the [↶] button to cancel the enlargement.
 - The picture will be gradually downsized each time the [↶] button is pressed.

Slideshow Viewing

- 1** Press the [⏻/▶||] button in Picture Viewing mode.
 - The slideshow will start.
- 2** Press the [↶] button to stop the slideshow.



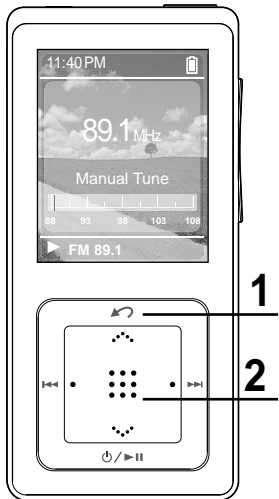
NOTE

- Please refer to page 53 for set the Start Time or interval of the Slideshow.

Listening to FM Radio

Before you start!

Connect your earphones to the player and turn the power on and check the battery status.



1 Press and hold the [↶] button to move to the menu screen.

2 Tap on the [⋮] to select <FM Radio> and then press the [Touch Pad] button.

- FM radio reception will start.
- When you first use the player or if no frequency is preset at the factory, it will display <Auto Scan...> while scanning for channels available.
 - ▶ page 43

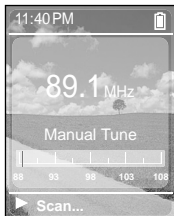
To use Mute function

Press [⏸] button during listening to FM radio.

- sound is muted.
- Press [⏸] button once again to sound back.

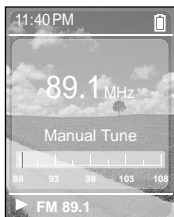
Listening to FM Radio (Continued)

To automatically search for frequencies



- 1 Press the [Touch Pad] to select <Manual Tune>.**
 - <Manual Tune> is displayed in Screen Display window.
- 2 Press and hold the [◀◀] or [▶▶] button and then release.**
 - The frequency nearest from the point the button is released will be searched.

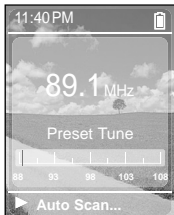
To manually search for frequencies



- 1 Press the [Touch Pad] to select <Manual Tune>.**
 - <Manual Tune> is displayed in Screen Display window.
- 2 Press the [◀◀] or [▶▶] button.**
 - Moves to frequencies whenever the button is pressed.

Setting a Frequency

To automatically set frequencies



- 1 Press the [Touch Pad] to select <Preset Tune>.
 - <Preset Tune> is displayed in Screen Display window.
- 2 Press and hold the [Touch Pad].
 - <Auto Scan...> is displayed and frequencies are automatically set.

To cancel during setting

Press [↶] button to cancel during auto scanning.

- The auto preset setting is canceled and frequencies set up to then are stored.



NOTE

- To set <Auto Scan> again after setting preset, existing frequencies are deleted entirely and you can reset from start.

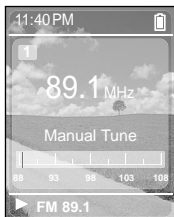


CAUTION

- Always connect your earphones to the player when searching or setting frequencies. The earphones are used as antennas to receive FM radio reception.

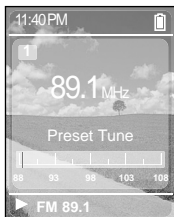
Setting a Frequency (Continued)

To manually set frequencies



- 1** Press the [Touch Pad] to select < Manual Tune>.
 - <Manual Tune> is displayed in Screen Display window.
- 2** Press the [◀◀] or [▶▶] button to search for a frequency to set in preset.
- 3** Press and hold the [Touch Pad].
 - The selected frequency is set as a preset number.
- 4** To set a preset number for other frequency, follow 1-3 steps above.

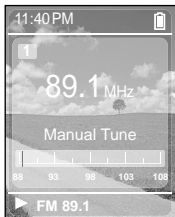
To search for frequencies in PRESET mode



- 1** Press the [Touch Pad] to select < Preset Tune>.
 - <Preset Tune> is displayed in Screen Display window.
- 2** Press the [◀◀] or [▶▶] button.
 - The preset number is selected and you can listen to the stored radio frequency.

To Delete Presets

Before you start! ■ Follow the steps below to delete frequencies while listening to FM radio.



- 1 Press the [Touch Pad] to select <Preset Tune>.**
 - <Preset Tune> is displayed in Screen Display window.
- 2 Press the [◀◀] or [▶▶] button to search for the preset number to delete.**
- 3 Press the [Touch Pad] to select <Manual Tune>.**
 - <Manual Tune> is displayed in Screen Display window.
- 4 Press and hold the [Touch Pad].**
 - The selected preset number will be deleted.
- 5 To select and delete other preset numbers, follow 1-4 steps above.**

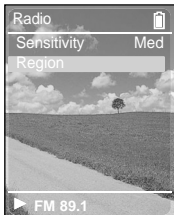
Setting FM Radio

To set FM Sensitivity



- 1** Press and hold the [↶] button to move to the menu screen.
- 2** Tap on the [⋮] to select <Settings>, then press the [Touch Pad].
 - The Settings menu appears.
- 3** Tap on the [⋮] to select <Audio>, then press the [Touch Pad].
 - The Audio menu appears.
- 4** Tap on the [⋮] to select <Radio>, then press the [Touch Pad].
 - The FM Radio menu appears.
- 5** Tap on the [⋮] to select <Sensitivity>, then press the [Touch Pad].
 - The FM Sensitivity menu appears.
- 6** Tap on the [⋮] to select the search level and then press the [Touch Pad].
 - You can select from <High> <Low> and <Med>.
 - The higher FM search level is, the more frequencies can be received.

To set FM region



- 1** Press and hold the [↶] button to move to the menu screen.
- 2** Tap on the [⋮] to select <Settings>, then press the [Touch Pad].
 - The Settings menu appears.
- 3** Tap on the [⋮] to select <Audio>, then press the [Touch Pad].
 - The Audio menu appears.
- 4** Tap on the [⋮] to select <Radio>, then press the [Touch Pad].
 - The FM Radio menu appears.
- 5** Tap on the [⋮] to select <Region>, then press the [Touch Pad].
 - The FM Region menu appears.
- 6** Tap on the [⋮] to select the FM region and then press the [Touch Pad].
 - You can select from <Europe> <Japan> <Korea> <USA> <Other>.



NOTE

- Frequency range by region
 - Japan: Search for FM frequencies in 100 kHz increments between 76.0 MHz~108.0 MHz.
 - Korea: Search for FM frequencies in 100 kHz increments between 87.5 MHz~108.0 MHz.
 - USA: Search for FM frequencies in 200 kHz increments between 87.5 MHz~108.0 MHz.
 - Europe/Other Countries: Search for FM frequencies in 50 kHz increments between 87.50 MHz~108.00 MHz.
- FM region can be deleted or changed according to the target region of the player.
- If you change the FM region, the previously stored radio frequencies are removed.

Voice Recording



- 1** Press and hold the [↵] button to move to the menu screen.
- 2** Tap on the [⋮] to select <Recordings>, then press the [Touch Pad].
 - The Recordings menu appears.
- 3** Tap on the [⋮] to select <Record Now>, then press the [Touch Pad].
 - Voice recording is started with displaying the file name to save.
- 4** Press [↵] button to finish recording.
 - Recording is saved and previous screen is displayed.

File names during recording

When recording file name is automatically designated in the format of "Recording NNN". NNN represents recording number. For example, Recording 003 represents that it voice file recorded in the third order.



CAUTION

- Do not place the microphone too close or too far away during recording, as this can affect the recording quality.
- Voice recording does not perform properly when the battery is low.



NOTE

- The voice recording is made in a quality of 64kbps.
- You can make a voice recording for about 65 hours (based on 2 GB)

Listening to recording file.

- 1** Press and hold the [↶] button to move to the menu screen.
- 2** Tap on the [⋮] to select <Recordings>, then press the [Touch Pad].
 - The Recordings menu appears.
- 3** Tap on the [⋮] to select your desired recording file to play back, then press the [Touch Pad].
 - Recording file starts to be played.
- 4** Press the [⏏/▶||] button to stop.
 - Recording file temporarily stops to be played.

To delete recording file

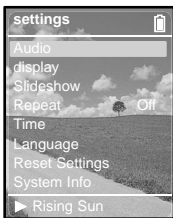
- 1** Tap on the [⋮] to select your desired recording file to delete, then press and hold the [Touch Pad].
- 2** Tap on the [⋮] to select <Delete>, then press the [Touch Pad].
 - The selected recording file is deleted.



Chapter 4. | Setup

Setup	51
Audio Setup	51
Display Setup	52
Slideshow Setup	53
Repeat Setup	54
Timer Setup	55
Language Setup	56
Reset	57
Checking the System Information	58

You can set detail functions and button sounds for music play.



1 Press and hold the [↶] button to move to the Menu screen.

2 Tap on the [⋮] to select <Settings>, then press the [Touch Pad].

- The Settings menu appears.

3 Tap on the [⋮] to select <Audio>, then press the [Touch Pad].

- The Audio Settings Menu will appear.

4 Use the [Touch Pad] to select and set the desired functions.

What is DNSe?

- DNSe is a sound effect function for MP3 players developed by Samsung and consists of 3D and Street modes. The 3D adds a stereophonic sound effect to the music and the Street mode provides an automatic volume control function that amplifies quiet sounds in noisy street environments.

- <DNSe> : You can select a suitable sound for each music genre. Select one from <Normal> <3D-Club> <3D-Stage> <3D-Studio> <Ballad> <Classical> <Jazz> <Dance> <House> <R & B> or <Rock>.
- <Street Mode>: Enables clear sound quality outdoors. Select either <Off> or <On>.
- <Key Beep>: Enables button sounds. Select either <Off> or <On>.
- <Radio> : You can select FM sensitivity among <High>, <Med> and <Low> ▶page 46. You can select FM receiving area among <Europe> <Japan> <Korea> <USA> and <Other> ▶page 47.



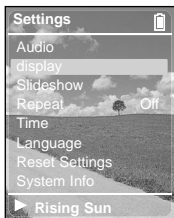
NOTE

Button functions for Setup

- Tap on the [⋮] to move up or down in the current Menu.
- Press the [Touch Pad] to select a Menu and save.
- Press the [↶] button to move to the previous screen.

Display Setup

You can adjust the brightness and the turn-off time for the screen display.



1 Press and hold the [↶] button to move to the Menu screen.

2 Tap on the [⋮] to select <Settings>, then press the [Touch Pad].

- The Settings menu appears.

3 Tap on the [⋮] to select <Display>, then press the [Touch Pad].

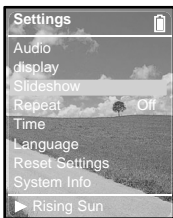
- The Display Setup Menu will appear.

4 Use the [Touch Pad] to select and set the desired functions.

- <Brightness> : You can adjust the brightness for the screen display.
Tap on the left side of the [Touch Pad] to darken, or on the right side of the [Touch Pad] to brighten.
- <Dim(Batt)> : When running on battery power, the screen display will darken if none of the buttons have been pressed for a preset period of time.
Select either <- (Always On)> <15s> <30s> <60s> or <120s>.
- <Off(Batt)> : When running on battery power, the screen display will be automatically turned off if none of the buttons have been pressed for a preset period of time.
Select either <- (Always On)> <15s> <30s> <60s> or <120s>.
- <Dim(USB)> : When connected via USB, the screen display will dim if none of the buttons have been pressed for a preset period of time.
Select either <- (Always On)> <15s> <30s> <60s> or <120s>.
- <Off(USB)> : When connected via USB, the screen display will be automatically turned off if none of the buttons have been pressed for a preset period of time.
Select either <- (Always On)> <15s> <30s> <60s> or <120s>.

Slideshow Setup

You can set the Start Time or interval of the slideshow.



1 Press and hold the [↵] button to move to the Menu screen.

2 Tap on the [⋮] to select <Settings>, then press the [Touch Pad].

- The Settings menu appears.

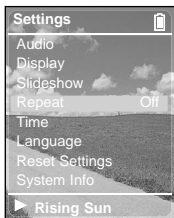
3 Tap on the [⋮] to select <Slideshow>, then press the [Touch Pad].

- The Slideshow Setup Menu will appear.

4 Use the [Touch Pad] to select and set the desired functions.

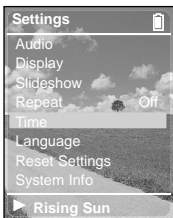
- <Start(Batt)> : When running on battery power, you can set the start time of the slideshow after the Menu and function screen disappears.
Select either <Off> <1m> <5m> <10m> or <15m>.
- <Start(USB)> : When connected via USB, you can set the start time of the slideshow after the Menu and function screen disappears.
Select either <Off> <1m> <5m> <10m> or <15m>.
- <Slide Time> : You can set the interval for the slideshow.
Select either <2s> <5s> <15s> <30s> or <60s>.
- <Shuffle> : You can repeatedly play pictures in random order. Select <On> or <Off>.

Repeat Setup



- 1** Press and hold the [**↶↷**] button to move to the Menu screen.
- 2** Tap on the [**⋮**] to select <Settings>, then press the [**Touch Pad**].
 - The Settings menu appears.
- 3** Tap on the [**⋮**] to select <Repeat>.
- 4** Press the [**Touch Pad**] to select the desired play mode.
 - You can select <Off> (Cancel Repeat) <One> (Single Track Repeat) or <All> (Repeat All).

Timer Setup



1 Press and hold the [↶] button to move to the Menu screen.

2 Tap on the [⋮] to select <Settings>, then press the [Touch Pad].

- The Settings menu appears.

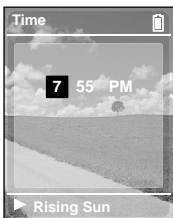
3 Tap on the [⋮] to select <Time>, then press the [Touch Pad].

- The Time Setup Menu will appear.

4 Use the [Touch Pad] to select and set the desired functions.

- <Sleep Timer> : You can set the power to turn off automatically after a preset period of time. The player will automatically turn off after the time you set. Select either <Off> <90m> <60m> <45m> <30m> or <15m>.
- <Set Time> : You can set the current time.

Setting Current Time



1 Press [Touch Pad] to move to <Time, Minute, AM/FM> and tap on the [⋮] to set current time.

2 Press [Touch Pad].

- Current time is completely set.

Language Setup



1 Press and hold the [↶] button to move to the Menu screen.

2 Tap on the [⋮] to select <Settings>, then press the [Touch Pad].

- The Settings menu appears.

3 Tap on the [⋮] to select <Language>, then press the [Touch Pad].

- The Language Settings screen will appear.

4 Tap on the [⋮] to select a language of your choice, then press the [Touch Pad].

- Select either <Chinese> <Chinese(T)> <Deutsch> <Dutch> <English> <French> <Hungarian> <Italian> <Japanese> <Korean> <Polish> <Portuguese> <Russian> <Spanish> <Swedish> or <Thai>.

**NOTE**

- The supported languages can be changed or added.

You can reset all settings to the default value.



1 Press and hold the [↶] button to move to the Menu screen.

2 Tap on the [⋮] to select <Settings>, then press the [Touch Pad].

- The Settings menu appears.

3 Tap on the [⋮] to select <Reset Settings>, then press the [Touch Pad].

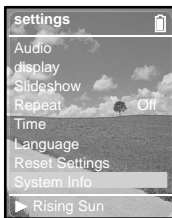
- The Reset Confirm screen will appear.

4 Tap on the [⋮] to select either <Cancel> or <Reset>, then press the [Touch Pad].

- Select <Cancel> to maintain the previous setup.
- Select <Reset> to re-initialize the setup.

Checking the System Information

You can check the memory, product version and copyright information.



1 Press and hold the [↶] button to move to the Menu screen.

2 Tap on the [⋮] to select <Settings>, then press the [Touch Pad].

- The Settings screen will appear.

3 Tap on the [⋮] to select <System Info>, then press the [Touch Pad].

- The System Info screen will appear.

4 Check the necessary information with the [Touch Pad].

- <Capacity> : You can check the total memory, memory available, total number of songs, albums or artists information.
- <Version> : You can check the firmware version.
- <About> : You can check the copyright information.



CAUTION

■ Regarding the Built-In Memory

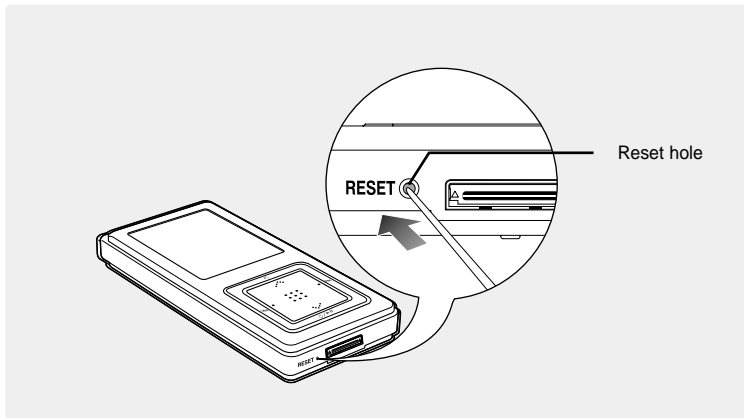
The actual built-in memory available is slightly less than indicated as the internal firmware uses a portion of the memory.

Chapter 5. | Troubleshooting

System Reset	60
Troubleshooting	61

System Reset

If a product malfunction occurs, you can re-initialize the system by pressing the Reset hole.



Press the Reset hole at the bottom of the product with a pointed object such as a safety clip.

- The system will be initialized.
- The Reset function will not delete data stored in the built-in memory.

Troubleshooting

If a malfunction is experienced, check the following.

If the problem persists, contact a Samsung Service Center near you.

Problem	Check points & Troubleshooting
Power will not turn on.	<ul style="list-style-type: none">■ Power will not turn on if the batteries are fully discharged. Recharge the batteries and turn the power on again.■ Press the Reset hole.
Buttons do not work.	<ul style="list-style-type: none">■ Check if the [HOLD] switch is in the direction of the arrow position.■ Check if you pressed the right button, then press again.■ Press the Reset hole.
The screen will not turn on.	<ul style="list-style-type: none">■ If you set <Off(Batt)> or <Off(USB)> in <Settings> in the <Display> Menu, the screen may look very dim. Press a button to turn on the screen.■ The screen may not be visible under direct sunlight.
Power is turning off.	The power is automatically turned off when the battery is fully discharged. Recharge the battery.
Battery life differs from the Manual.	<ul style="list-style-type: none">■ The battery life may vary, depending on the settings of LCD.■ Product life may be shortened when left for extended periods in low or high temperatures.

Troubleshooting (Continued)

Problem	Check points & Troubleshooting
Playing is disabled.	<ul style="list-style-type: none">■ Check if the available file has been saved in the memory.■ Check if the music file is damaged.■ Check if there is enough battery power.
File upload is disabled.	<ul style="list-style-type: none">■ Check if the USB cable is securely connected. Reconnect if necessary.■ Check if the memory is full.■ Press the Reset hole.
Files or Data are Missing.	Check if the USB cable has been disconnected during file or data transmission. If this is the case, it may cause serious damage not only to files/data but also to the product. You have to be extra cautious as Samsung is not held responsible for data loss.
Abnormal Play Time Display during Play.	Check if the file is in VBR (Variable Bit Rate) format.
Abnormal Display of File Name.	Move to <Settings> → <Language> in the Menu screen and set an appropriate language.

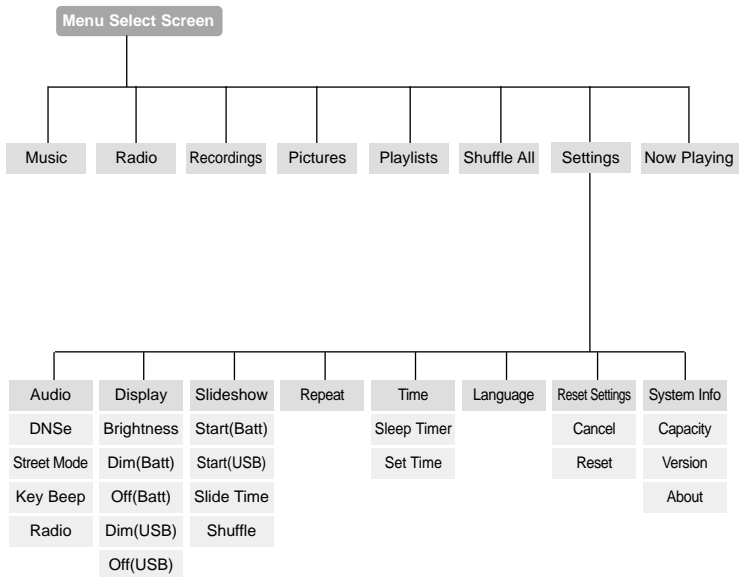
Problem	Check points & Troubleshooting
Program Malfunction	Please check if your PC requirements are met.
Connection to your PC is disabled.	Press <Start> on the toolbar of your PC to run Windows Update. Select Key Updates and Service Packs, then update all. Reboot your PC and reconnect.
The backlight does not turn on.	<ul style="list-style-type: none"> ■ Check the <Off(Batt)> or <Off(USB)> ■ Check the battery.
The product is hot.	Heat may be generated during recharging. This has no effect on the product life or functions.

Chapter 6. | Appendix

Menu Tree	65
Manual USB Driver Installation.....	66
Product Specifications	69

Menu Tree

You can quickly view the menu structure.



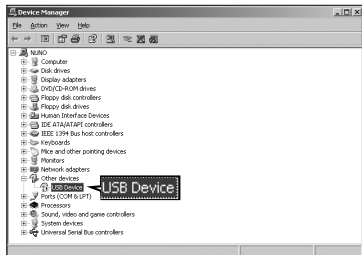
Manual USB Driver Installation

Install the USB driver manually if it could not be installed automatically or an error occurred during installation.

Before you start! ■ Insert the installation CD in the CD-ROM drive.

If an error occurs during installation of the USB driver

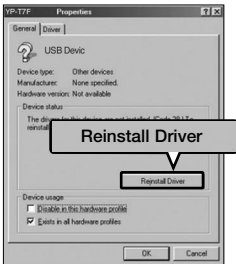
- 1** Check the device manager.
Windows 98SE: Control Panel → System → Device Manager
Windows 2000 / XP: Control Panel → System → Hardware → Device Manager
- 2** Check if there is a device listed with an exclamation point or a question mark (displayed as unknown device or USB device).
- 3** Double click on the device listed with an exclamation point or a question mark.



NOTE

- If you are using Windows 2000 and your version of Windows does not recognize the USB driver please download and install the latest service pack from windowsupdate.microsoft.com
- The installation method may vary depending on the type of PC or operating system. Contact your PC dealer or service center for installation information.
- If errors occur continuously when you install the USB driver, reconnect the USB cable after rebooting your system.

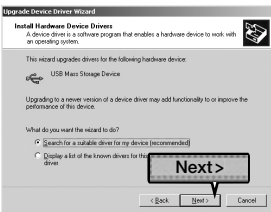
4 After selecting the driver, click [Reinstall Driver].



5 Click [Next].



6 Select [Search for a suitable driver for my device] and then click [Next].



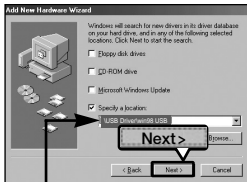
7 Click [Next] to finish.



Manual USB Driver Installation (Continued)

In Windows 98SE

Follow the instructions in the window to complete the installation.



USB driver location
[CD-ROM] USB Driver/win98 USB

You must reboot your computer to complete the installation.



NOTE

- You cannot use it as a removable disc in Windows 98SE if the YP-Z5F program is not installed. Make sure to install the USB driver file first.

Product Specifications

Model Name		YP-Z5F
Power		3.7V (Li-Polymer Rechargeable)
Built-in Battery Power		820 mAh
File	Compatibility	AUDIO: MPEG1/2/2.5 Layer3(8kbps~320kbps, 8kHz~48kHz), MPEG1 Layer2(32kbps~384kbps, 32kHz, 44.1kHz, 48kHz), WMA(8kbps~192kbps,8kHz~44.1kHz), Ogg(Q0~Q10) IMAGE: JPEG(ISO/IEC 10918-1/Annex F-Sequential DCT-based mode of operation)
Earphone Output		20mW(France 5mW/CH)(16Ω)
Output Frequency Range		20Hz~20KHz
Noise Ratio		89 dB with 20kHz LPF(based on 1KHz 0 dB)
Play Time		39 hours of music play (LCD Off, Volume 27)
Temperature Range for Operation		5~35 °C (23~95°F)
Case		Aluminum
Weight		56g (inc. battery)
Dimension (WxHxD)		2GB :42.2 X 89.8 X 11.4mm 4GB :42.2 X 89.8 X 12.3mm
FM Frequency		87.5~108.0MHz
FM Signal to Noise Ratio		50dB
FM T.H.D		1%
FM Useable Sensitivity		38dBμ

- The contents of this Manual are subject to change without prior notice for further improvement.

Contact SAMSUNG WORLD WIDE

If you have any questions or comments relating to Samsung products, please contact the SAMSUNG customer care center.

Country	Customer Care Center	Web Site
CANADA	1-800-SAMSUNG (7267864)	www.samsung.ca
MEXICO	01-800-SAMSUNG (7267864)	www.samsung.com/mx
U.S.A	1-800-SAMSUNG (7267864)	www.samsung.com
ARGENTINE	0800-333-3733	www.samsung.com/ar
BRAZIL	0800-124-421	www.samsung.com/br
CHILE	800-726-7864(SAMSUNG)	www.samsung.com/cl
COSTA RICA	0-800-507-7267	www.samsung.com/latin
ECUADOR	1-800-10-7267	www.samsung.com/latin
EL SALVADOR	800-6225	www.samsung.com/latin
GUATEMALA	1-800-299-0013	www.samsung.com/latin
JAMAICA	1-800-234-7267	www.samsung.com/latin
PANAMA	800-7267	www.samsung.com/latin
PUERTO RICO	1-800-682-3180	www.samsung.com/latin
REP. DOMINICA	1-800-751-2676	www.samsung.com/latin
TRINIDAD & TOBAGO	1-800-7267-864	www.samsung.com/latin
VENEZUELA	1-800-100-5303	www.samsung.com/latin
BELGIUM	02 201 2418	www.samsung.com/be
CZECH REPUBLIC	844 000 844	www.samsung.com/cz
DENMARK	38 322 887	www.samsung.com/dk
FINLAND	09 693 79 554	www.samsung.com/fi
FRANCE	08 25 08 65 65 (0,15/min)	www.samsung.fr
GERMANY	01805 - 121213 (0,12/Min)	www.samsung.de

Country	Customer Care Center	Web Site
HUNGARY	06 40 985 985	www.samsung.com/hu
ITALIA	199 153 153	www.samsung.com/it
LUXEMBURG	02 261 03 710	www.samsung.lu
NETHERLANDS	0900 20 200 88	www.samsung.com/nl
NORWAY	231 627 22	www.samsung.com/no
POLAND	0 801 801 881	www.samsung.com/pl
PORTUGAL	808 200 128	www.samsung.com/pt
SLOVAKIA	0850 123 989	www.samsung.com/sk
SPAIN	902 10 11 30	www.samsung.com/es
SWEDEN	08 585 367 87	www.samsung.com/se
U.K	0870 242 0303	www.samsung.co.uk
RUSSIA	8-800-200-0400	www.samsung.ru
UKRAINE	8-800-502-0000	www.samsung.com/ur
AUSTRALIA	1300 362 603	www.samsung.com/au
CHINA	800-810-5858 , 010- 6475 1880	www.samsung.com.cn
HONG KONG	2862 6001	www.samsung.com/hk
INDIA	3030 82821600 1100 11	www.samsung.com/in
INDONESIA	0800-112-8888	www.samsung.com/id
JAPAN	0120-327-527	www.samsung.com/jp
MALAYSIA	1800-88-9999	www.samsung.com/my
PHILIPPINES	1800-10-SAMSUNG (7267864)	www.samsung.com/ph
SINGAPORE	1800-SAMSUNG (7267864)	www.samsung.com/sg
THAILAND	1800-29-3232 / 02-689-3232	www.samsung.com/th
TAIWAN	0800-329-999	www.samsung.com/tw
VIETNAM	1 800 588 889	www.samsung.com/vn
SOUTH AFRICA	0860 726786 (SAMSUNG)	www.samsung.com/za
U.A.E	800SAMSUNG (7267864)	www.samsung.com/mea

License

The product unit accompanying this user manual is licensed under certain intellectual property rights of certain third parties. This license is limited to private non-commercial use by end-user consumers for licensed contents.

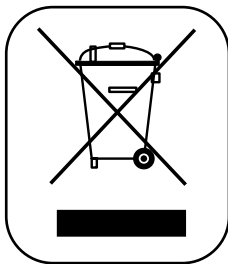
No rights are granted for commercial use. The license does not cover any product unit other than this product unit and the license does not extend to any unlicensed product unit or process conforming to ISO/IEC 11172-3 or ISO/IEC 13818-3 used or sold in combination with this product unit. The license only covers the use of this product unit to encode and/or decode audio files conforming to the ISO/IEC 11172-3 or ISO/IEC 13818-3. No rights are granted under this license for product features or functions that do not conform to the ISO/IEC 11172-3 or ISO/IEC 13818-3.

User Interface by Inventor, Inc.
Copyright (C) 2006, All rights reserved.



— EUROPE ONLY —

This marking shown on the product or its literature, indicates that it should not be disposed with other household wastes at the end of its working life. To prevent possible harm to the environment or human health from uncontrolled waste disposal, please separate this from other types of wastes and recycle it responsibly to promote the sustainable reuse of material resources. Household users should contact either the retailer where they purchased this product, or their local government office, for details of where and how they can take this item for environmentally safe recycling. Business users should contact their supplier and check the terms and conditions of the purchase contract. This product should not be mixed with other commercial wastes for disposal.



Free Manuals Download Website

<http://myh66.com>

<http://usermanuals.us>

<http://www.somanuals.com>

<http://www.4manuals.cc>

<http://www.manual-lib.com>

<http://www.404manual.com>

<http://www.luxmanual.com>

<http://aubethermostatmanual.com>

Golf course search by state

<http://golfingnear.com>

Email search by domain

<http://emailbydomain.com>

Auto manuals search

<http://auto.somanuals.com>

TV manuals search

<http://tv.somanuals.com>