

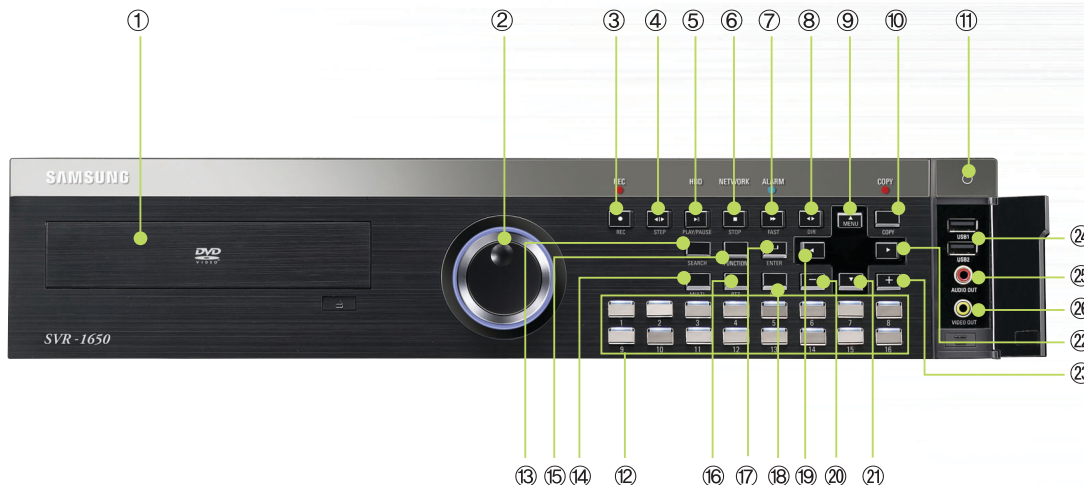
Quick Guide To Using SVR-1650/1640/950

PRIOR TO USING THE PRODUCT

This is a quick guide covering some of the more frequently used features only. For more accurate and detailed information about the product, please refer to the User's Manual.

BUTTONS

- | | | |
|---------------------|--------------------|----------------|
| ① DVD + RW | ② Jog/Shuttle | ③ Record |
| ④ Frame Playback | ⑤ Play/Pause | ⑥ Stop |
| ⑦ Fast Play | ⑧ Change Direction | |
| ⑨ Menu(up) | ⑩ Copy | ⑪ Power |
| ⑫ Select Channel | ⑬ Search | ⑭ Multi Screen |
| ⑮ Select Function | ⑯ PTZ | ⑰ Enter |
| ⑱ ESC | ⑲ Move Cursor Left | |
| ⑳ - | ㉑ Move Cursor Down | |
| ㉒ Move Cursor Right | ㉓ + | |
| ㉔ USB | ㉕ Audio Out | ㉖ Video Out |



USING JOG/SHUTTLE

Shuttling
Use it to control playback direction (forward/reverse) or speed (2x / 4x / 8x / Max).

Jog Dial
Use it for frame-by-frame search of video recordings.

PRODUCT FEATURES

1. Live Monitoring



Multi Screen

With each pressing of the Multi Screen button, the screen splits into 16, 4, or 9 screens respectively.



Single Screen

Press a channel button to see the respective channel only on the screen.

2. Recording



Press the REC button to start or stop recording. REC lamp located on the top of the REC button will display recording status.

(Caution: the REC button function interacts with the Scheduled Recording settings.)

3. Search/Playback Recordings

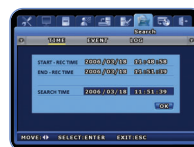


Search button



Select Time or Event

1. Press the Search button
2. Select either the Time search or the Event search
3. Enter Date/Time or select an event from the Event List
4. Press the Enter button to play



Time search: Enter Date/Time



Event search: Select an Event from the list

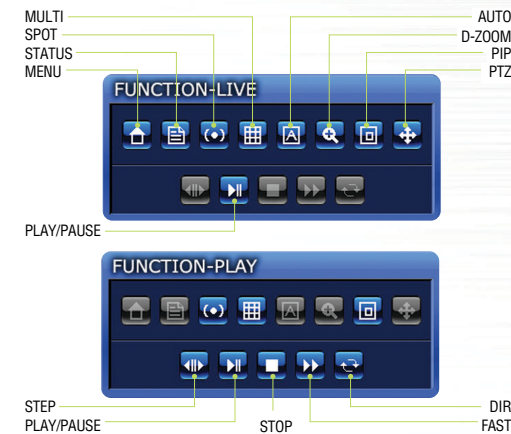
4. Playback Buttons



- **STEP**: Play a single frame
- **PLAY/PAUSE**: Start or Pause playback
- **STOP**: Switch to live mode
- **Fast**: Faster playback speed (2x / 4x / 8x / Max)
- **DIR**: Switch playback direction

5. Hot Function Menu

Press the Function button () or right-click the mouse to use Hot Function icons.



*Function-Play feature is enabled only in the Single Screen mode.

Quick Guide To Using SVR-1650/1640/950

RECORDING FUNCTION

SAMSUNG DVR provides several different recording methods. You can easily select and set any recording method that is most suitable for your environment or needs.

1. Motion Sensor Recording

SAMSUNG DVR can detect any motion on its screen and initiate recording automatically.



Key Button

- Select ► Event Setup ► Event
- Event Time: always select

2. Manual & Event Recording

SAMSUNG DVR can be set to use Manual Recording Method(recording preset number of frames per second) and Event Recording Method(recording triggered by an event on the screen) simultaneously.

Step 1: Set Manual & Event Recording mode



Key Button

- Select ► Record Setup ► Record
- Recording mode: select Manual & Event
 - Program: select Program (A~T)

Step 2: Select Record Program



Key Button

- Select ► Record Setup ► Record Program
- Set recording of Manual & Event (N, E) / Recording Mode(Q)

* You can select the Manual & Event Recording Mode suitable for your environment and use one of the 20 basic programs. (Default mode: program K)

3. Scheduled & Event Recording

SAMSUNG DVR can be set to perform recording functions according to a preset date/time schedule using its Scheduled Recording Mode.

Step 1: Select Scheduled & Event Recording



Key Button

- Select ► Record Setup ► Record
- Recording Mode: select Scheduled & Event
 - Scheduled Recording: select >>

Step 2: Set Schedule Recording



Key Button

- Index: 1~50 different programs can be set
- Day: designate recording date
- Program: select a recording program (A~T)
- Time: designate recording time
- Set: select **APPLY** or **DELETE**

*You can use the buttons or your mouse wheel to set this: the graphic on your screen only shows recording setting status.

4. Copy (Back-up)

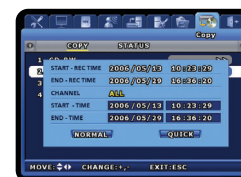
HDD content can be stored in other storage medium including DVD+RW, CD-RW and USB memory stick.



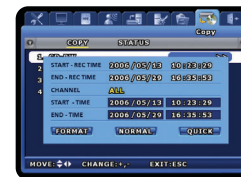
Press COPY Button



COPY Select



USB memory stick



DVD+RW/CD-RW

- * **Recommended media**
- DVD+RW : Mitsubishi, TDK, imation (1~4X recommended)
 - CD-RW : Mitsubishi, TDK, imation (4~12X recommended)
 - USB memory stick : SanDisk, Transcend (512MB recommended)

1. Press COPY button after inserting a storage device
2. Go to COPY menu
3. Select Normal or Quick menu
(Before COPY, Use DVD+RW/CD-RW after executing the DVR Format menu)

Caution : Using authentic and new media products is recommended. If DVD+RW or CD-RW is over a long period of time, errors may occur.

Free Manuals Download Website

<http://myh66.com>

<http://usermanuals.us>

<http://www.somanuals.com>

<http://www.4manuals.cc>

<http://www.manual-lib.com>

<http://www.404manual.com>

<http://www.luxmanual.com>

<http://aubethermostatmanual.com>

Golf course search by state

<http://golfingnear.com>

Email search by domain

<http://emailbydomain.com>

Auto manuals search

<http://auto.somanuals.com>

TV manuals search

<http://tv.somanuals.com>