

SAMSUNG

SNH-1010N English

Quick Start Guide



Thank you for purchasing the Samsung SmartCam WiFi Home Security Camera. Follow the simple steps in this guide to set up and start using your new SmartCam.

HELP If you have any questions or need help installing your new product please contact our free technical support.

Telephone : 1-877-349-3149

9am - 9pm EST, Monday - Friday

Internet : <http://www.samsungsv.com/Support/Index>

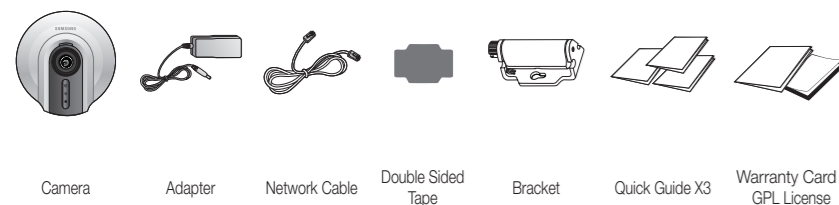
Related manual can be downloaded from

<https://www.samsungsmartcam.com/web>.

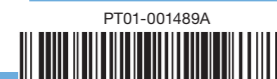
The SmartCam webpage and mobile menu may be subject to change without prior notice.

UNPACKING

Make sure all following items are in the packaging:



! Please keep the packaging. You will need the serial number that on the side of the packaging to register the camera.

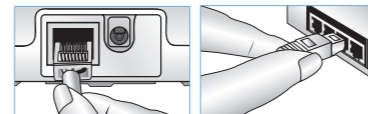


1. CONNECTING THE CAMERA TO YOUR ROUTER

1) Connect the power adapter to the camera.



2) Connect the network cable to the camera and your network router.



✓ Connect one end of the enclosed network cable to your camera and the other to an open port on your router. Once setup is complete, you will no longer need the network cable and the camera will connect to your WiFi network.

3) The camera bootup will take about 1 minute then the camera status LED will change from red to white.



! If your WiFi router supports WPS feature, refer to the user manual to connect via WPS button.

2-1. SETTING UP YOUR ACCOUNT FROM MOBILE PHONE

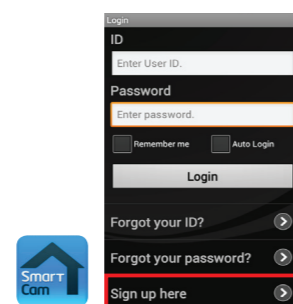
✓ Download the Samsung Smartcam App on to your Android phone or your iPhone.



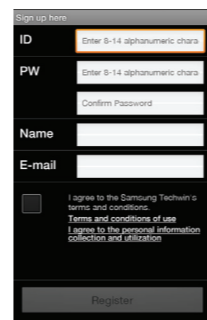
✓ Search keywords for the application: "Samsung SmartCam", "Smartcam", "SAMSUNG TECHWIN", "TECHWIN".

1) Run the downloaded application.

2) Tap <Sign up here>.



3) Check to agree to the terms and conditions, and then tap <Next>.



4) Enter the required information and Tap <Register>.

- ID : Create user ID using letters, numbers and periods between 8-14 characters.
- PW : Create password using letters and numbers except colons and commas between 8-14 characters.
- Confirm Password : Checks whether your password is entered correctly.
- Name : Enter your name.
- E-mail : Email address is used to recover your account password.

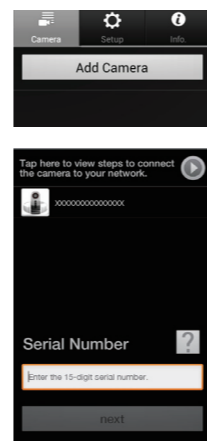
2-2. ADDING YOUR CAMERA

1) Log-in.

2) Tap <Add Camera>.

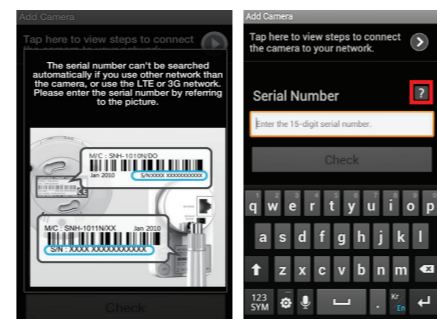
3) Select the camera found and tap <next>.

✓ When your smartphone is connected to the same WiFi network as the camera, it will automatically search for the camera.



4) If the camera is not detected, please enter the camera serial number manually.

✓ Tap on [?] for more information.

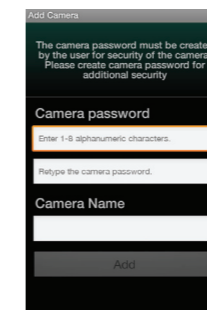


5) Create the <Camera password> and <Camera Name>, and then tap <Add>.

✓ Create camera password using alphanumeric characters between 1 to 8 without any space. Example : q1

6) Tap <Go To Camera List>.

✓ If there is a camera to register additionally, tap <Register new camera>.



2-3. CONNECTING CAMERA TO WI-FI NETWORK

1) From the camera list, tap on the [>] for camera options.

2) Tap on <Setup> icon.

3) Enter the camera password you created for this camera and Tap <OK>.

4) Tap the <Network setting>.

5) Turn WiFi on.

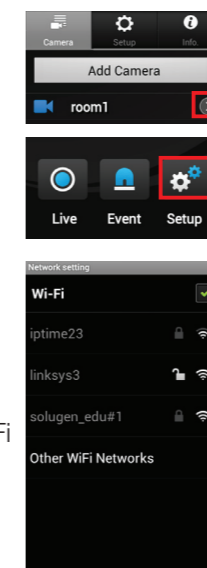
6) Select your WiFi network and enter your WiFi network password.

- Other WiFi Networks : Enter the SSID name and password to connect to the network.

7) Tap <OK> and unplug the network cable from the camera and the router.

✓ The WiFi status LED will become steady white once the camera is connected to the Wireless Access Point. (may take up to 30sec). You can now unplug and place the camera anywhere within your wireless network range. If the camera LED did not turn solid white, please contact our tech support at 1-877-349-3149.

8) Tap <Back> and select <Live> to see the video.

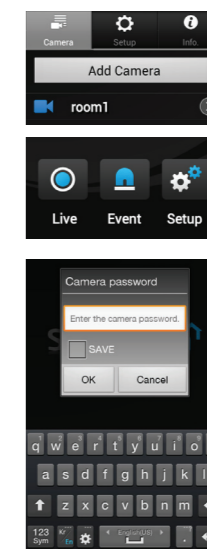


2-4. VIEWING LIVE VIDEO

1) Tap on the camera icon [>] to view live video. Tap on the arrow icon [>] for camera options.

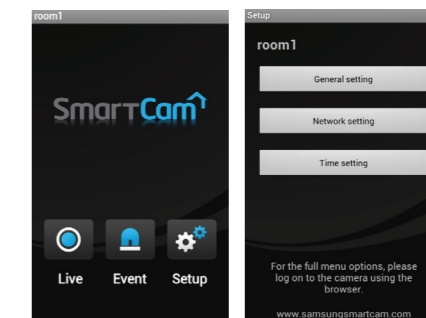
2) Enter the <Camera password> for the camera selected. This is the same camera password you created at the time you registered the camera. Check the <SAVE> option to save the camera password. Within 20 seconds, it will start streaming.

✓ Video loading time will vary depending on your internet connection.



2-5. CAMERA SETUP

Tap the <Setup> icon to configure a camera to be monitored.



❖ General setting

1) Tap <General setting>.

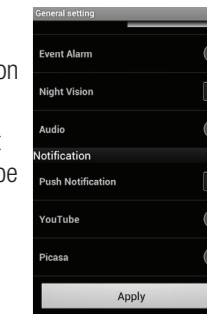
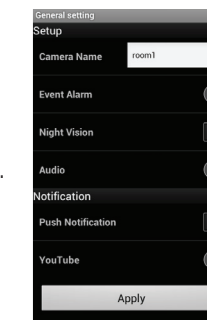
2) Configure the basic camera settings.

- Camera Name : Camera name is used to easily identify the camera when you have more than one. i.e., Living room, Kitchen, Bedroom.
- Event Alarm : Specify whether to trigger the alarm or not, and specify the sensitivity. The higher the sensitivity is, the subtler motion/ audio events will be detected.
- Night Vision : Set the IR lighting. Check <Night Vision> to set the camera to switch to the night vision mode automatically.
- Audio : Adjust the volume of the built-in microphone and speaker of the camera as appropriate.

3) Configure the notification.

- Push Notification : Check to receive push notification to your phone.
- YouTube : Tap [>] to enter your YouTube account information to upload 30 video clips to your YouTube account when event is detected.
- Picasa : Tap [>] to enter your Picasa account information to upload a picture to your Picasa account when event is detected.

4) Tap <Apply>.

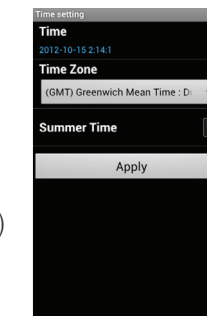


❖ Time setting

1) Tap <Time setting>.

2) Set the camera's clock.

- Time Zone : Select your region.
- Summer Time : Check this option if you live in a country or region where DST(Daylight Saving Time) is applied.



3-1. SETTING UP YOUR ACCOUNT FROM COMPUTER

1) From your PC, launch your web browser.

- ✓ Supported browsers: WINDOWS : Internet Explorer8+, Chrome, FireFox
MAC OS : Safari, Chrome, FireFox

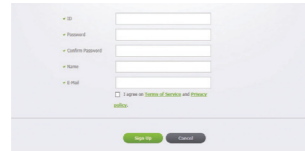


2) Go to <http://www.samsungsmartcam.com>.



3) Click <Starting SmartCam>.

- ✓ You need to install your plug in to automatically search for cameras connected to the network and view the video in your camera.



4) Create user ID between 8 to 14 alphanumeric character. You can use letters, numbers and periods.

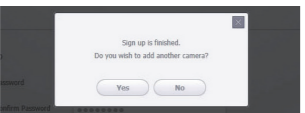
5) Create password between 8 to 14 alphanumeric character. You can use letters, numbers, periods and commas between 8-14 characters.

6) Confirm Password.

7) Enter rest of the requested information and click <Sign Up>.

3-2. ADDING YOUR CAMERA

1) Click <Yes> in the pop-up window of camera registration after completing your member sign-up.



2) Click <Next> if the LED status is white.



3) Select the serial number of the camera to be added from the camera search list. If the camera is not found, enter the serial number manually.



- ✓ The computer and the camera has to be on the same network router to auto detect the cameras.

4) Click <Next>.

5) Create <Camera Name> and <Camera password>.

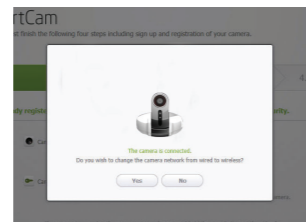


- ✓ Create camera password using alphanumeric characters between 1 to 8 without any space. Example : q1

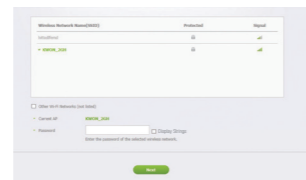
6) Click <Next>.

3-3. CONNECTING CAMERA TO WI-FI NETWORK

1) After adding the camera, click <Yes> in the wireless network setup pop-up window.



2) Select your Wireless Network from the list.

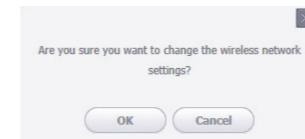


- ✓ If your Wireless Network is hidden, select <Other Wi-Fi Networks (not listed)>.

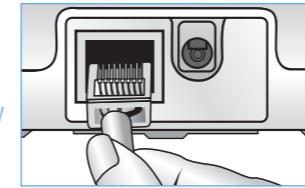
3) Enter the password of your Wireless Network and click <Next>.

- ✓ To display the password, select <Display Strings>.

4) Click <OK>.



5) Unplug the network cable from the camera and the router.



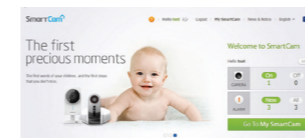
- ✓ The WiFi status LED will become steady white once the camera is connected to the Wireless Access Point. (may take up to 30sec). You can now unplug and place the camera anywhere within your wireless network range. If the camera LED did not turn solid white, please contact our tech support at 1-877-349-3149.

6) Click <Finish> if the <Finish> button is activated.

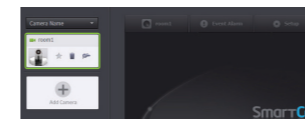


3-4. VIEWING LIVE VIDEO

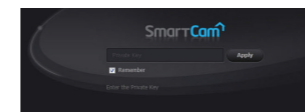
1) Click <Go To My SmartCam>.



2) Select a camera from the camera list at the upper left hand of the screen.



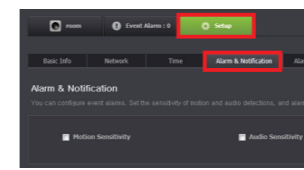
3) Enter the camera password and click <Apply>.



- ! If you forget the camera password, it must be reset. Please refer to the user manual for details.
- ✓ Check <Remember> to connect the camera without entering the camera password.

3-5. ALARM & NOTIFICATION

1) Click <Setup>.



2) Select the <Alarm & Notification> tab.

3) Check <Motion Sensitivity> for motion detection. Check <Audio Sensitivity> for audio detection.



4) Adjust the sensitivity.

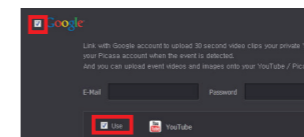
3-6. ALARM RECEIPT SETTING

* After clicking <Google>, select your email address and password. The setting is required if you want to use YouTube/Picasa/Gmail.

❖ YouTube

Automatically uploads 30 second clip to your private YouTube account.

1) Select the Google.



2) Check <Use> of YouTube.

3) Enter your Gmail address and password.

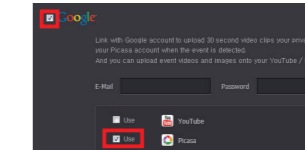
4) Click <Save to Google>.

- ! If you do not have a YouTube account, please go to YouTube.com and register an account. The recorded videos are 30sec clips.

❖ Picasa

Automatically uploads a image to your private Picasa account.

1) Select the Google.



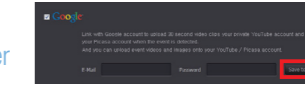
2) Check <Use> of Picasa.

3) Enter your Gmail address and password.

- ✓ If your Google email ID and password are saved, check the use of Picasa only.

4) Click <Save>.

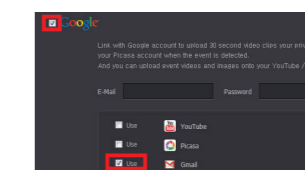
- ! The Picasa account information of the user is the same as the YouTube account.



❖ Gmail

The event alarm is sent through Gmail.

1) Select the Google.

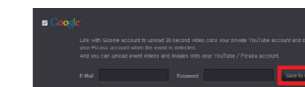


2) Check <Use> of Gmail.

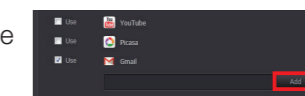
3) Enter your Gmail address and password.

- ✓ If your Google email ID and password are saved, check the use of Gmail only.

4) Click <Save>.



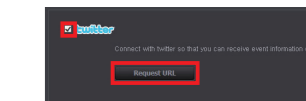
5) Enter your Gmail address to receive the notification e-mail and click <Add>.



❖ Twitter

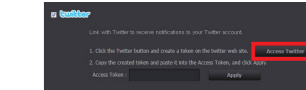
When an event is detected, the notification message is sent to the user's Twitter account.

1) Select the Twitter.

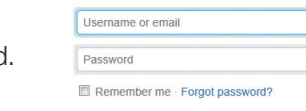


2) Click <Request URL>.

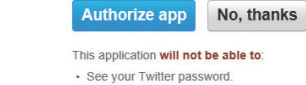
3) Click <Access Twitter>.



4) Enter the Twitter ID and password.



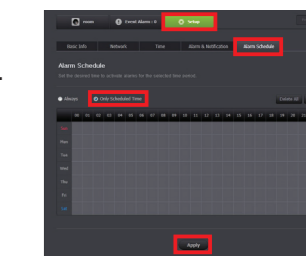
5) Click <Authorize app>.



3-7. ALARM SCHEDULE SETTING

1) Click <Setup>.

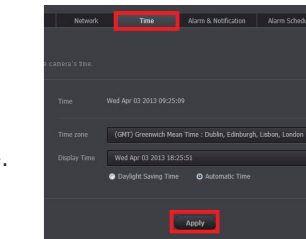
2) Click the <Alarm Schedule> tab.



3) Select <Only Scheduled Time>. Select the time slot to enable detection.

4) Click <Apply>.

5) Select the <Time> tab.



6) Select the user's time zone in <Time Zone> and click <Apply>.

Free Manuals Download Website

<http://myh66.com>

<http://usermanuals.us>

<http://www.somanuals.com>

<http://www.4manuals.cc>

<http://www.manual-lib.com>

<http://www.404manual.com>

<http://www.luxmanual.com>

<http://aubethermostatmanual.com>

Golf course search by state

<http://golfingnear.com>

Email search by domain

<http://emailbydomain.com>

Auto manuals search

<http://auto.somanuals.com>

TV manuals search

<http://tv.somanuals.com>