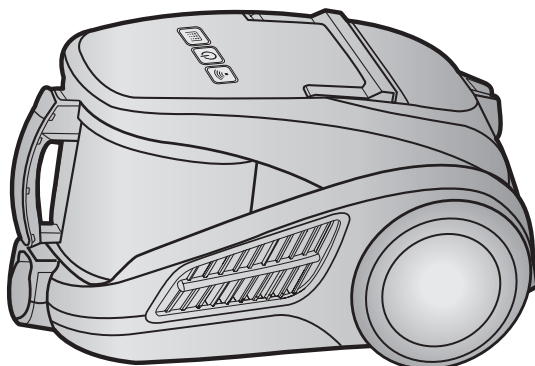


SAMSUNG

Operating Instructions

VACUUM CLEANER



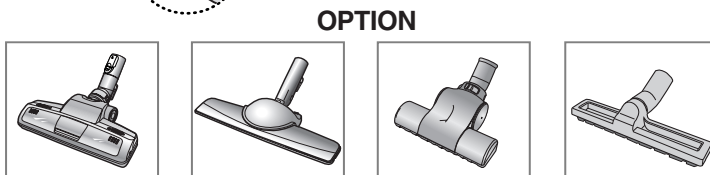
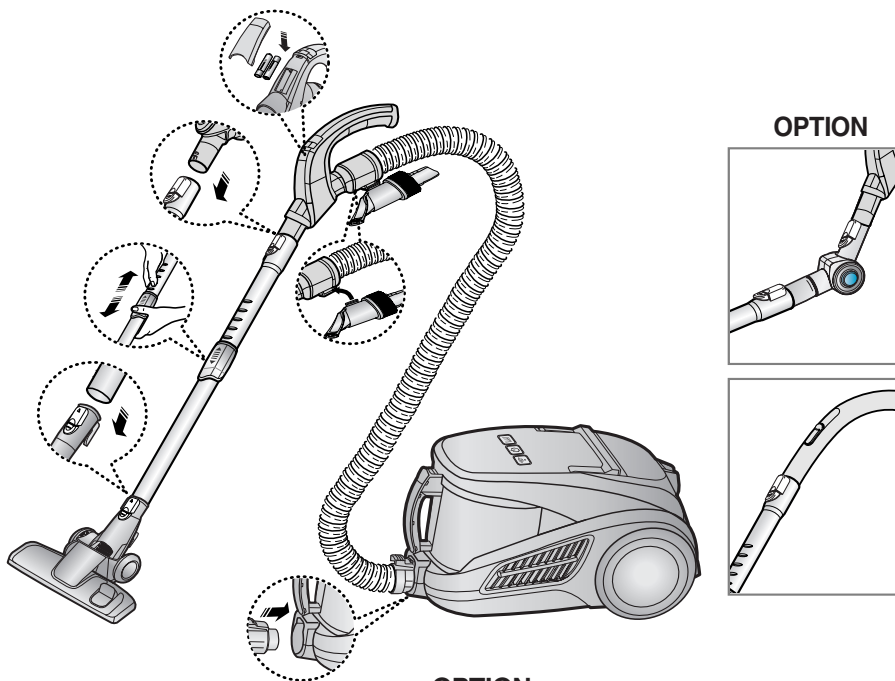
- * Before operating this unit, please read the instructions carefully.
- * Indoor use only.

Register your product at www.samsung.com/global/register

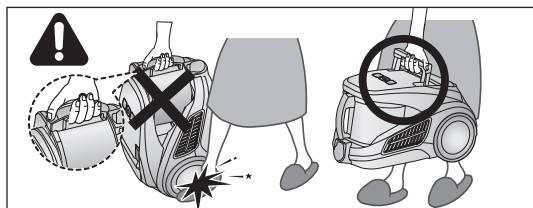
IMPORTANT SAFEGUARDS

1. Read all instructions carefully. Before switching on, make sure that the voltage of your electricity supply is the same as that indicated on the rating plate on the bottom of the cleaner.
2. **WARNING:** Do not use the vacuum cleaner when rug or floor is wet.
Do not use to suck up water.
3. Close supervision is necessary when any appliance is used by or near children. Do not allow the vacuum cleaner to be used as a toy. Do not allow the vacuum cleaner to run unattended at any time. Use the vacuum cleaner only for its intended use as described in these instructions.
4. Do not use the vacuum cleaner without a dust bin. Empty the dust bin before it is full in order to maintain the best efficiency.
5. Do not use the vacuum cleaner to pick up matches, live ashes or cigarette butts. Keep the vacuum cleaner away from stoves and other heat sources. Heat can deform and discolour the plastic parts of the unit.
6. Avoid picking up hard, sharp objects with the vacuum cleaner as they may damage the cleaner parts. Do not stand on the hose assembly. Do not put weight on the hose. Do not block the suction or the exhaust port.
7. Switch the vacuum cleaner off on the body of the machine before unplugging from the electrical outlet. Disconnect the plug from the electrical outlet before changing the dust bag or dust container. To avoid damage, please remove the plug by grasping the plug itself, not by pulling on the cord.
8. This appliance is not intended for use by young children or infirm persons without supervision unless they are adequately supervised by a responsible person to ensure that they can use the appliance safely.
Young children should be supervised to ensure that they do not play with the appliance.
9. The plug must be removed from the socket outlet before cleaning or maintaining the appliance.
10. The use of an extension cord is not recommended.
11. If your vacuum cleaner is not operating correctly, switch off the power supply and consult an authorized service agent.
12. If the supply cord is damaged, it must be replaced by the manufacturer or its service agent or a similarly qualified person in order to avoid a hazard.
13. Don't carry the vacuum cleaner by holding the hose.
Use the handle on the vacuum cleaner set.
14. Unplug the cleaner when not in use. Turn off the power switch before unplugging.

1 ASSEMBLING THE CLEANER

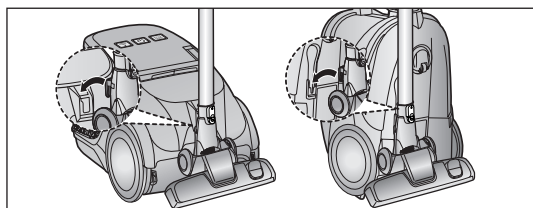


► Features may vary according to model. Refer to 5,6 page.



CAUTION

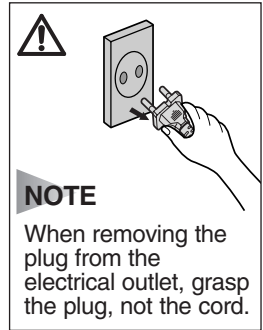
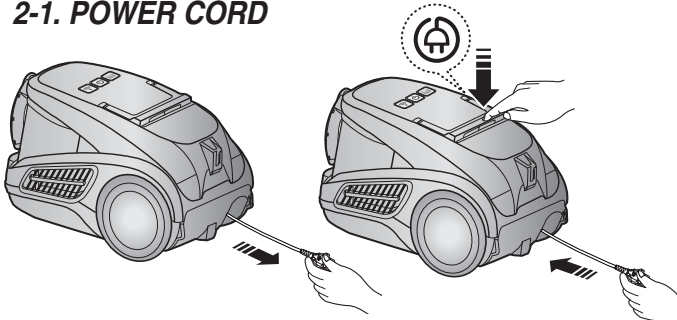
Please do not press the button of dust bin handle when carrying machine.



For storage, park the floor nozzle.

2 OPERATING THE CLEANER

2-1. POWER CORD



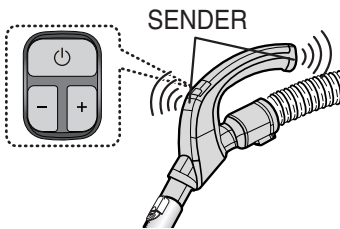
NOTE

When removing the plug from the electrical outlet, grasp the plug, not the cord.

2-2. POWER CONTROL (INFRARED CONTROL)

1) REMOTE CONTROL TYPE

- HOSE



HANDLE CONTROL

[The cleaner is controlled by using infrared signals.]

1. Vacuum cleaner ON/OFF (⏻)

Press the ON/OFF button to operate the vacuum cleaner. Press again to stop the vacuum cleaner.

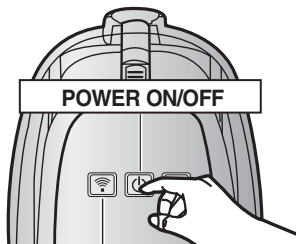
2. Vacuum cleaner (+, -)

Press the (+) button to operate the vacuum to high suction power. Press the (-) button to operate the vacuum to low suction power.

NOTE : Don't cover the handle sender when you use a handle control button.

- BODY

OPTIONAL - DIGITAL SIGNAL



RECEIVER

Press the power ON/OFF button repeatedly to start and to stop the vacuum cleaner (OFF → ON → OFF)

NOTE : If the remote handle control is not working, the cleaner can be operated using the ON/OFF button on the body of the machine.



The IR light indicates the part that receives the infra-red signal from the handle control.



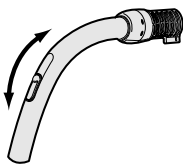
The ON/OFF button operates the vacuum cleaner or stops it.



The filter light is illuminated when the dust pack requires checking or emptying. An audio signal will also sound.

2) BODY-CONTROL TYPE

- HOSE



To reduce suction for cleaning draperies, small rugs, and other light fabrics, pull the tap air until the hole is open.

- BODY



To control power level, just slide the power control bottom right and left.

off = For stopping the vacuum cleaner.

MAX = For hard floors and heavily soiled carpets.

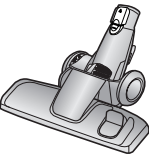

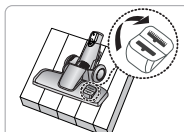
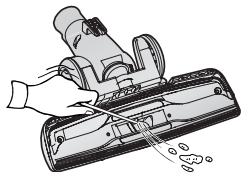
2-3. HOW TO USE AND MAINTAIN THE ACCESSORIES

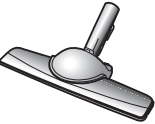
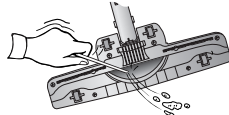
► Features may vary according to model.


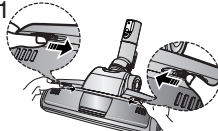
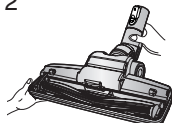
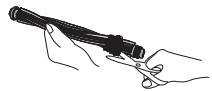
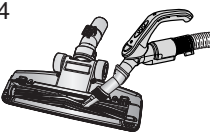
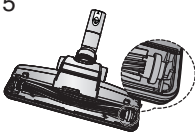
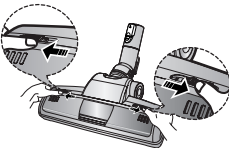
PIPE		
	<p>Adjust the length of the telescopic pipe by sliding the length control button located in the center of the telescopic pipe back and forth.</p>	<p>To check for blockages, separate the telescopic pipe and adjust to shorten. This allows for easier removal of waste clogging the tube.</p>

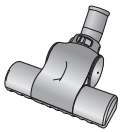
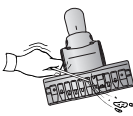
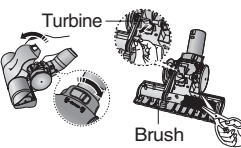
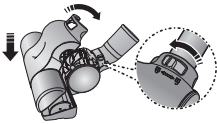
ACCESSORY		
<p>All in one Accessory</p>		<p>Push the accessory on to the end of the hose handle.</p>
		<p>Pull out and turn the dusting brush for cleaning delicate areas.</p>
		<p>To use the upholstery tool, push the accessory on to the end of the hose handle in the opposite direction.</p>

ELBOW EXTENDING TUBE (OPTION)					
	<p>1</p>	<p>2</p>	<p>3</p>	<p>4</p>	<p>5</p>
	<ol style="list-style-type: none"> 1. Connect the elbow extending tube to connecting part for hose knob and telescopic pipe. 2. Fit the telescopic pipe to the lower part of the elbow extending tube. 3. Press the PUSH button. 4. With the PUSH button pressed, the elbow extending tube is folded. 5. Using the elbow extending tube allows hard to reach areas (e.g. under furniture) to be cleaned without having to kneel down. 				

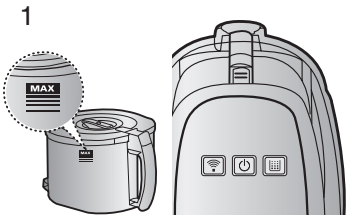
<p>OPTION</p> 	<p>- Carpet Cleaning</p>  <p>- Floor Cleaning</p>  <p>Adjust the inlet lever according to the floor surface.</p>	 <p>Remove waste matter completely if the inlet is blocked.</p>
--	--	--

<p>OPTION</p> 	<p>Vacuum dust in wide area at once</p>	 <p>Remove waste matter completely if the inlet is blocked.</p>
--	---	--

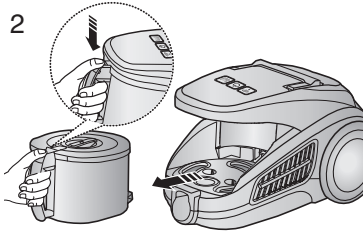
<p>OPTION</p>  <p>For improved pick-up of pet hair and fibre on carpets</p>	<p>Frequent vacuuming of hair or pet fur may cause a falling-off of the rotation due to matters tangled around the drum. In this case, clean the drum with care.</p>		
<p>1</p>  <p>Push the Open button of the transparent screen cover to separate the cover.</p>	<p>2</p>  <p>Remove the brushbar from the transparent screen.</p>	<p>3</p>  <p>Remove waste matter such as dust and hair tangled around the brushbar using scissors.</p>	
<p>4</p>  <p>Remove dust inside the brush housing using a dry duster or crevice tool.</p>	<p>5</p>  <p>Insert brushbar into rotating belt and assemble.</p>	<p>6</p>  <p>Click the transparent screen cover back into place to reassemble.</p>	

<p>OPTION</p>  <p>Brush for blanket</p> <p>For picking up pet hair and fibre on upholstery and bed linen.</p>	<p>Clogs on turbine keeps brush from turning, and in this case, take care of it.</p>		
 <p>Remove waste matter completely when inlet is blocked.</p>	 <p>Turbine</p> <p>Brush</p> <p>Turn the lock button to 'UNLOCK', and remove waste matter.</p>	 <p>To reassemble, align the cover to the front of the main body and close. After closing the cover, ensure that the lock button is turned to the 'LOCK' position.</p> <p>Warning : Use for bedclothes only. Be cautious not to damage brush during unlogging.</p>	

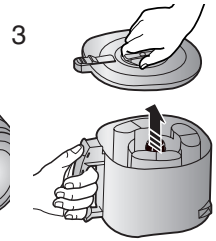
3 EMPTYING THE DUST BIN



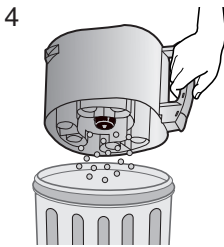
Once dust reaches the DUST FULL mark, empty the dust bin.



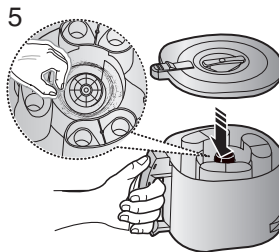
Take the dust bin out by pressing the button.



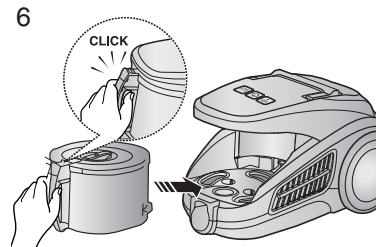
Separate the dust bin cover.



Throw the dust away in the bin.

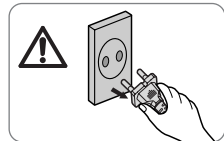
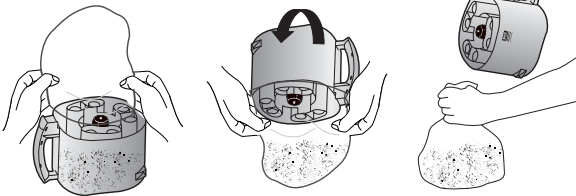


After emptying the DUST BIN, remove the obstacles like hair, fur on the cap of the DUST BIN.

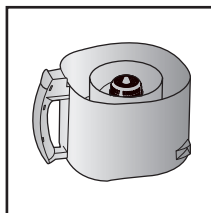
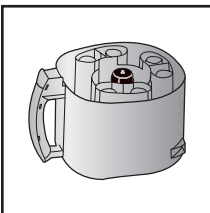


Before use, push the dust bin into the main body of the vacuum cleaner until you hear the "click" sound.

- Empty into a plastic bag (recommended for asthma/allergy sufferers)



OPTION



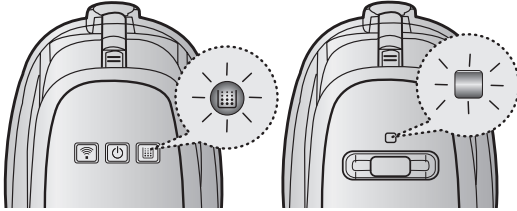
NOTE

You may rinse the dust bin with cold water

4 CLEANING THE DUST PACK

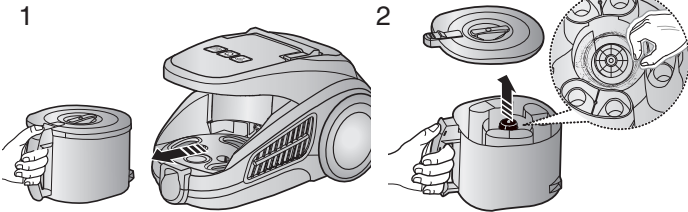
4-1. WHEN TO CLEAN THE DUST PACK

- Please, check the dust bin and dust pack if suction is noticeably reduced or the filter check indicator lamp turns on after emptying the dust bin.



The lamp will illuminate to signal when suction is reduced. If the light comes on, please clean the DUST BIN as shown.

4-2. CLEANING THE DUST BIN



Detach the DUST BIN.

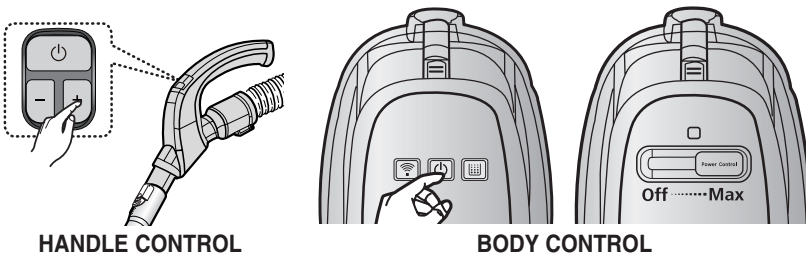
After emptying the DUST BIN, remove the obstacles like hair, fur on the cap of the DUST BIN.

NOTE :

Please, check the filter check indicator lamp (4-3) as shown in the following illustrations if the lamp is still illuminated even after cleaning the dust bin.

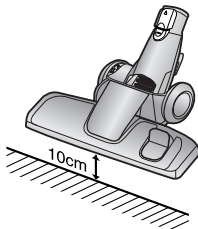
4-3. CHECKING THE FILTER CHECK INDICATOR LAMP

Turn the vacuum power to 'MAX'



HANDLE CONTROL

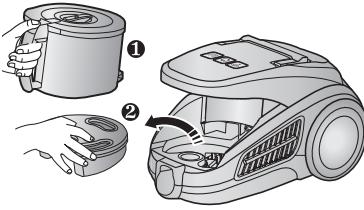
BODY CONTROL



If the filter check indicator turns red with the inlet floating 10cm above flat floor, clean the DUST PACK.

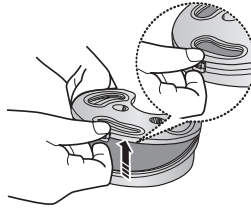
4-4. CLEANING THE DUST PACK

1



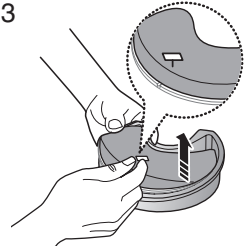
Remove the dust bin and dust pack as shown.

2



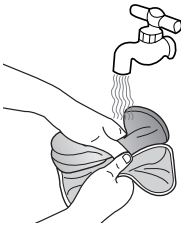
Remove the fixed frame of the dust pack cover.

3



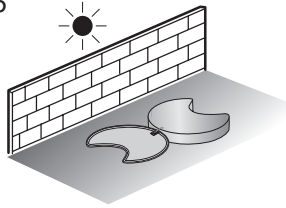
Remove the sponge and filter from the dust pack.

4



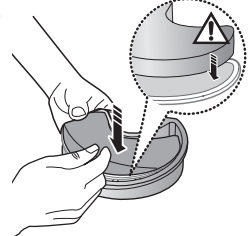
Wash the sponge and the filter of the dust pack with water.

5



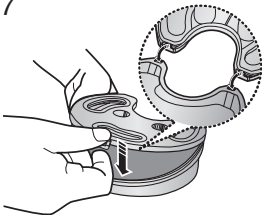
Let the sponge and filter dry in the shade for more than 12 hours.

6



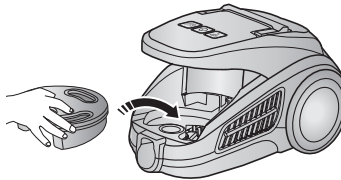
Put the sponge and filter into the dust pack.

7



Before reassembly, align the dust pack cover and dust pack correctly.

8

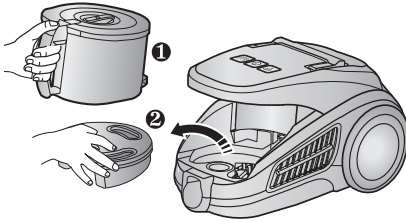


Put the assembled dust pack into the main body.

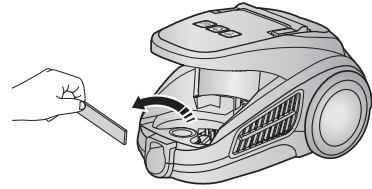


NOTE : Make sure the filter is completely dry before putting it back into the vacuum cleaner. Allow 12 hours for it to dry.

5 CLEANING THE MOTOR PROTECTION FILTER

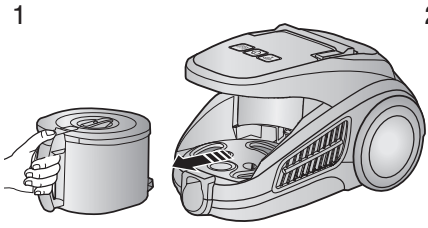


Take out both the dust bin and the dust pack.

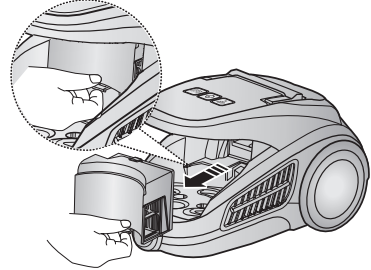


Remove the motor protection filter from the vacuum cleaner. Shake and tap the dust from it and put back in machine.

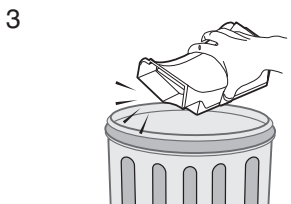
6 CLEANING THE OUTLET FILTER



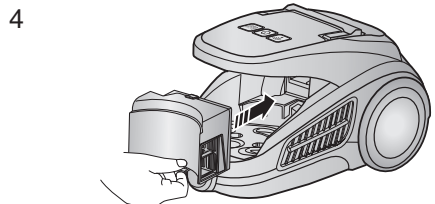
Remove the dust bin.



Pull out the HEPA Filter as shown.

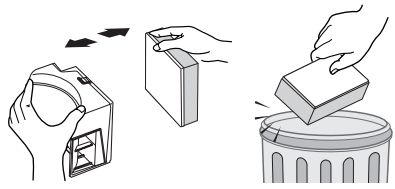


Dust the HEPA filter.



Put the HEPA filter into the main body until you hear a 'click' sound.

OPTION - MICRO CARBON FILTER

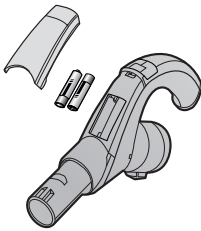


Remove and replace the blocked outlet filter.

NOTE :

Replacement filters are available at your local Samsung distributor.

7 CHANGE THE BATTERY(OPTIONAL)



BATTERY TYPE : AAA Size



NOTE

1. When the vacuum cleaner does not work, replace the batteries. If the problem persists, please contact our authorized dealer.
2. Use 2 batteries of size AAA.



WARNING

1. Never disassemble or recharge the batteries.
2. Never heat up the batteries or throw them into fire.
3. Do not reverse (+),(-) poles.
4. Dispose of the batteries properly.

- IF YOU HAVE A PROBLEM

PROBLEM	CAUSE	REMEDY
Motor does not start.	No power supply. Thermal cut-out.	Check cable, plug and socket. Leave to cool.
Suction force is gradually decreasing.	Nozzle, suction hose or tube is blocked.	Check for blockage and remove it.
Cord does not rewind fully.	Check that the cord is not twisted or wound unevenly.	Pull the cord out 2-3m and push the cord rewind button.
Vacuum cleaner does not pick up dirt.	Crack or hole in hose.	Check hose and replace if required.
Low or decreasing suction	Filter is full of dust.	Please check filter and, if necessary, clean as illustrated in the instructions.

If you have any comments or questions regarding Samsung products, contact the SAMSUNG customer care center.

Country	Customer Care Center ☎	Web Site
AUSTRALIA	1300 362 603	www.samsung.com
HONG KONG	3698-4698	www.samsung.com/hk
MALAYSIA	1800-88-9999	www.samsung.com/my
SINGAPORE	1800-SAMSUNG (7267864)	www.samsung.com

MEMO

SAMSUNG

MEMO

SAMSUNG

MEMO

SAMSUNG

MEMO

SAMSUNG



Free Manuals Download Website

<http://myh66.com>

<http://usermanuals.us>

<http://www.somanuals.com>

<http://www.4manuals.cc>

<http://www.manual-lib.com>

<http://www.404manual.com>

<http://www.luxmanual.com>

<http://aubethermostatmanual.com>

Golf course search by state

<http://golfingnear.com>

Email search by domain

<http://emailbydomain.com>

Auto manuals search

<http://auto.somanuals.com>

TV manuals search

<http://tv.somanuals.com>