

SyncMaster VC240

Video Conference System

User Guide

Information in this user guide is subject to change without prior notice for performance improvement.



Copyright

The color and design may differ depending on the model, and specifications are subject to change without prior notice for performance improvement.

© 2010–2011 Samsung Electronics Co., Ltd.

All rights reserved by Samsung Electronics Co., Ltd. You are prohibited from unauthorized use or reproduction of any of the information in this user guide without prior approval from Samsung Electronics Co., Ltd.

- SyncMaster and the Samsung logo are registered trademarks of Samsung Electronics Co., Ltd.
- Microsoft, Windows, and Windows NT are registered trademarks of Microsoft Corporation.
- VESA, DPM, and DDC are registered trademarks of Video Electronics Standard Association.

All other brand names mentioned herein are trademarks of their respective owners.

Contents

1 Introduction	1		
1.1 Features	1		
1.2 Package Contents	1		
Accessories	1		
Basic View	2		
1.3 Remote Control	3		
2 Setup	4		
2.1 Precautions	4		
Power Supply	4		
Installation	4		
Cleaning	5		
Using the Product	5		
2.2 Assembling the Product	7		
Theft Prevention	8		
Mounting the Monitor to a Wall	9		
Blocking Electromagnetic Waves	9		
2.3 Connections	10		
Connecting to a PC	10		
Connections for Video Calls	11		
2.4 Finding the Best Viewing Angle	11		
2.5 Powering On the Monitor	12		
Video Modes	12		
Video Signal Modes	12		
2.6 Navigating between Menus	13		
2.7 Keyboard Modes	14		
2.8 Power-saving Modes	15		
		Max. Power Saving Mode	15
		Standby Mode	15
3 Network and Call Settings	17		
3.1 Network Settings	17		
3.2 Data Transmission Mode	19		
H.323 Data Transmission	19		
SIP Data Transmission	19		
NAT Traversal	20		
3.3 Call Settings	21		
Call Quality	21		
Time	23		
Camera	25		
4 Video Call	27		
4.1 Making a Call	27		
4.2 Answering a Call	28		
4.3 Screen Layout	29		
4.4 Making a Phone Book	31		
Adding a Group	31		
Renaming a Group	31		
Deleting a Group	32		
Adding a Contact	32		
Editing a Contact	33		
Deleting a Contact	33		
Making a Call	35		
Searching a Contact	35		
4.5 Recent-Call Log	36		
Viewing Call Details from the Call Log	36		
Deleting a Call from the Call Log	37		
Making a Call	38		
Adding a Contact to the Phone Book	39		

4.6	Zooming a Remote Caller's camera	39
4.7	Remote Presentation	40
5	Video Conferencing with RADVISION SCOPIA Systems	41
6	Custom Settings	44
6.1	Menu Language	44
6.2	Picture	45
	PC or DVI Mode	45
	VC Mode	49
6.3	Security	52
6.4	Reset Settings	53
6.5	Software Update	53
7	Troubleshooting Guide	55
	Index	56

1 Introduction

1.1 Features

The video conference system VC240 can be used for various purposes:

- Use VC240 as an ordinary monitor.
- Make video calls over the Internet or a local network to VC240 or other types of video conference systems.
- Conduct a multiparty video conference over an MCU (Multipoint Conferencing Unit).

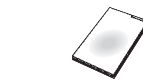
Refer to Table 1 for specifications.

Table 1: Specifications

Screen size	59 cm (23.6 inches)
Aspect ratio (width X length)	521.28 X 293.22 mm
Pixel size	0.2715 mm
Horizontal frequency	30–81 kHz
Vertical frequency	56–75 Hz
Max. resolution	1920 X 1080 @ 60 Hz
Dimensions (width X height X thickness)	568.6 X 397.4 X 77.7 mm (without the stand) 568.6 X 440.0 X 226.0 mm (with the stand)
Weight	8.8 kg (with the stand)

1.2 Package Contents

Accessories



Installation guide



Warranty card



User guide



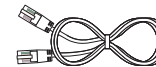
Brochures



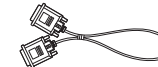
Power cord



VGA cable



LAN cable



DVI cable



Audio cable



Remote control



Batteries (AAA X 2)

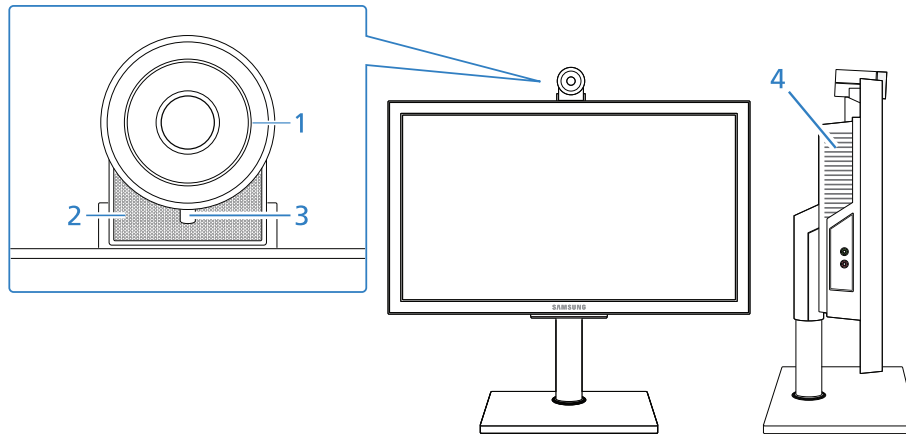


Ferrite core



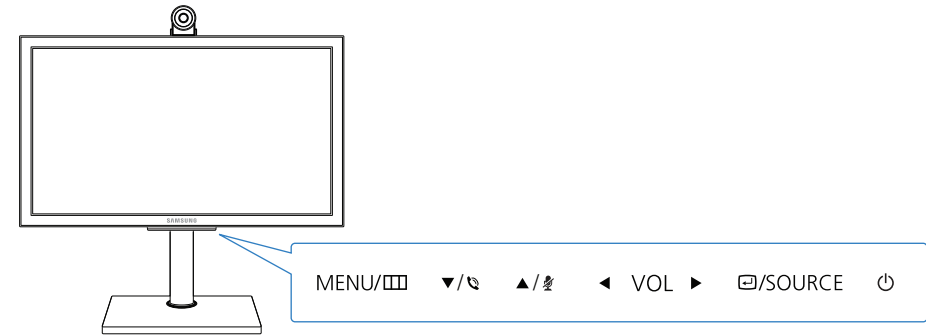
Cleaning cloth

Basic View



- 1 Camera
- 2 Microphone
- 3 Remote control sensor
- 4 Speaker

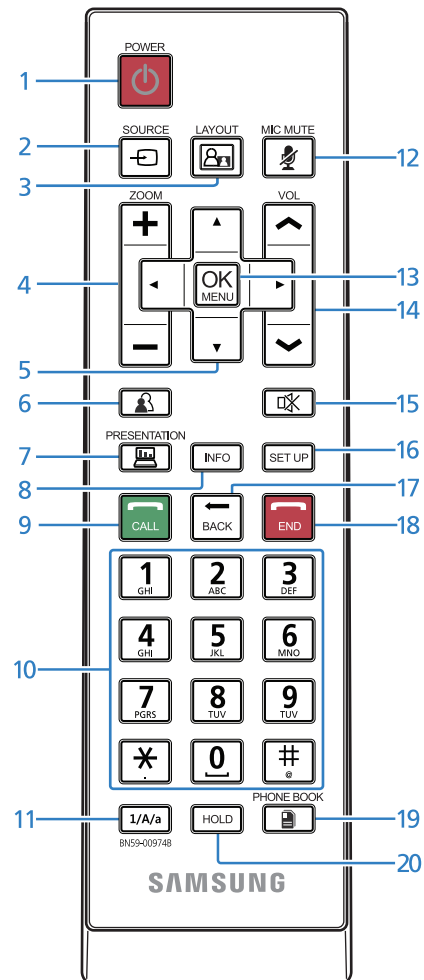
This camera cannot be connected directly to a computer and thus cannot be used for purposes other than video calls.



- MENU/□ is used to open or close a menu, return to the last menu, or delete the last character you typed.
- ▼/☎ is used to navigate between menus, or make a call.
- ▲/🔇 is used to navigate between menus, or disable the microphone.
- ◀ is used to navigate between menus, or lower the volume.
- ▶ is used to navigate between menus, or raise the volume.
- □/SOURCE is used to change the video mode, or select a menu option.
- ⏻ powers on or off the monitor. See §2.8.

1.3 Remote Control

You can control the monitor by using the buttons on the remote control or on the bottom of the monitor. Be sure the remote control is not lost.



- 1 powers on or off the monitor. See §2.8.
- 2 changes the video mode. See §2.5.
- 3 splits the screen to display the pictures from the camera and from the PC at the same time. See §4.3.
- 4 zoom the camera in or out during a video call. See §4.6.
- 5 are used to navigate between menus, or change the settings of each menu option. See §2.6.
- 6 is used to control the camera during a video call. See §4.6.
- 7 is used to send the picture from your PC to your remote party. See §4.7.
- 8 shows the current video mode.
- 9 is used to make a video call. See Chapter 4.
- 10 These buttons are used to type letters or numbers.
- 11 switches between keyboard modes in order of numbers > capital letters > lowercase letters. See §2.7.
- 12 disables the microphone.
- 13 displays a menu, or select an option.
- 14 decrease or increase the volume.
- 15 mutes the sound.
- 16 opens the Setup menu.
- 17 is used to return to the last menu, or delete the last character you typed.
- 18 is used to exit a menu, or close a video call.
- 19 is used to display your telephone directory. See §4.4.
- 20 is not available for this product.

2 Setup

2.1 Precautions

Be sure to install the monitor in a place that satisfies the conditions indicated in Table 2.

Table 2: Environmental conditions

Operating temperature	10–40 °C (50–104 °F)
Operating humidity	20–80%
Storage temperature	–20–45 °C (–4–113 °F)
Storage humidity	5–95%

Power Supply

- Do not use a damaged power cord or a loose power socket. Otherwise, an electric shock or fire may result.
- Do not plug or unplug the power cord with wet hands. Otherwise, an electric shock may result.
- Be sure to plug the power cord into a grounded power socket. Otherwise, an electric shock or personal injury may result.
- Do not let the product or power plug contact heat appliances. Otherwise, an electric shock or fire may result.
- Do not plug many products into the same power socket. Otherwise, the socket may overheat and cause a fire.
- Be sure to insert the power plug firmly into the socket. An unstable connection may cause a fire.

- Neither bend nor pull the power cord, nor weigh it down with a heavy object. Otherwise, the power cord may be damaged and cause an electric shock or fire.
- Remove the dust around the plug pins and power socket with a dry cloth. Dust may cause a fire.
- Do not unplug the power cord when the product is in use. Otherwise, an electric shock may damage the product.
- Be sure to hold the plug when unplugging the power cord. Otherwise, an electric shock or fire may result.
- Do not use an unauthorized power cord. The power cord should have been supplied by Samsung. Otherwise, an electric shock or fire may result.
- Place the power plug in an easily accessible area so that you can unplug the power cord in order to completely cut the power to the product when there is a problem. The power button alone on the product does not completely cut the power.

Installation

- Do not expose the product to a heat source, i.e. do not put a candle, mosquito coil, or a lit cigarette on top of the product and do not install the product near a heat appliance. Otherwise, a fire may result.
- Avoid installing the product in a narrow space with bad ventilation, such as a bookshelf or wall closet. Otherwise, the inside temperature may increase and cause a fire.
- Keep the plastic bag for the product in a place that cannot be reached by children. Children may suffocate.

- Do not install the product in a vehicle or a place exposed to dust, moisture, oil, or smoke. Otherwise, an electric shock or fire may result.
- Do not install the product in a place that can be reached by children. Children may knock the product down and injure themselves. The front part of the product is heavy. Be sure to install it on a flat, stable surface.
- Be sure to leave a space (10 cm or more) behind the product for ventilation when it is installed on a wall. Otherwise, a fire may result from an increase in internal temperature.
- Do not install the product on an unstable structure or where there is much vibration. Otherwise, the product may fall and break, and such vibration may cause the product to fail or start a fire.
- Do not expose the product to direct sunlight, heat, or a hot object such as a stove. Otherwise, the product life may be reduced, or a fire may result.
- Take care not to drop the product when moving it. Otherwise, product failure or personal injury may result.
- When installing the product in a cabinet or on a shelf, be sure the bottom front part of the product does not protrude. Otherwise, the product may fall off and break or cause a personal injury. Be sure to use a cabinet or shelf appropriate for the product size.
- Installing the product in an unusual place may seriously affect its performance. Avoid a place exposed to a lot of fine particles, chemical substances, or extreme temperatures; or operating the product continuously for many hours in an airport or train station.
- Do not place the product with the display facing down on the floor. Otherwise, the display may be damaged.
- Put down the product carefully. Otherwise, product failure or personal injury may result.

Cleaning

- Be sure the power cord is removed when you clean the product. Otherwise, an electric shock or fire may result.
- Do not spray the detergent directly onto the product. Otherwise, the exterior or display is highly likely to discolor, crack, or peel off.
- Do not spray water directly onto the product. Neither let water enter the product nor get the product wet. Otherwise, a fire, electric shock, or product defect may result.
- Be sure to remove the power cord and wipe the product with a soft, dry cloth. Do not use chemicals such as wax, benzene, alcohol, thinner, mosquito repellent sprays, aromatic sprays, lubricant, or detergent. Otherwise, the exterior may be damaged or the labels may be removed.
- The exterior of the product can be easily scratched. Be sure to clean it using a dedicated cloth. Dampen the cloth with a small amount of water. Remove any foreign substance from the cloth to avoid scratching the product.

Using the Product

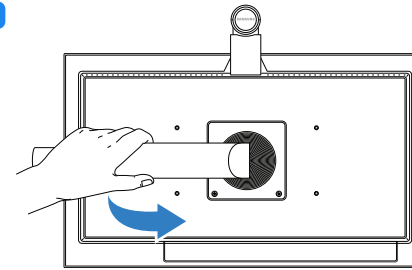
- High voltage runs through the product. Do not attempt to disassemble, repair, or modify the product on your own. Otherwise, an electric shock or fire may result. Contact Samsung's service center for repair.
- If the product generates a strange noise, a burning smell, or smoke, remove the power cord immediately, and contact Samsung's service center. Otherwise, an electric shock or fire may result.
- If the product falls or the exterior is damaged, power off the product, remove the power cord, and contact Samsung's service center. Otherwise, an electric shock or fire may result.
- Do not move the product by pulling the power cord or signal cable. Otherwise, the power cord may be damaged and cause an electric shock or fire.

- Do not lift or swing the product only by the power cord or signal cable. Otherwise, the power cord may be damaged and cause product failure, a fire or an electric shock.
- Before you move the product, be sure to turn off the power switch and remove all the connected cables, including the power cord. Otherwise, the power cord may be damaged and cause an electric shock or fire.
- Do not let your child hang on to or mount the product. Otherwise, the product may fall, and your child may be injured or even killed.
- Neither let the product fall nor apply force to it. Otherwise, an electric shock or fire may result.
- If there is a gas leak, do not touch the product or power plug; instead, ventilate the room immediately. Otherwise, a spark can cause an explosion or fire. During a thunderstorm or lightning, do not touch the power cord. Otherwise, product failure or personal injury may result.
- Neither use nor keep combustible spray or an inflammable substance near the product. Otherwise, an explosion or fire may result.
- Be sure the vent is not blocked by a table cloth or curtain. Otherwise, a fire may result from an increase in internal temperature.
- Do not put a metallic object or an object that contains liquid (a flower vase, a flowerpot, a drink, toiletries, medicines, etc.) on top of the product. If water or any foreign substance enters the product, remove the power cord, and contact Samsung's service center. Otherwise, product failure, a fire, or an electric shock may result.
- Do not insert a metallic object (a chopstick, coin, hair pin, etc.) or inflammable object (paper, match, etc.) into the vent or ports of the product. If water or any foreign substance enters the product, be sure to power off the product, remove the power cord, and contact Samsung's service center. Otherwise, product failure, a fire, or an electric shock may result.
- Displaying the same picture for many hours may cause an afterimage or stain. If you will not use the product for many hours, activate power-saving mode or the moving-picture screen saver.
- Configure the appropriate resolution and frequency for the product. Otherwise, your eyesight may weaken.
- Continuously watching the display from a close distance may weaken your eyesight.
- Rest your eyes for at least five minutes every hour. This will relieve your eye fatigue.
- Keep small-sized accessories in a place that cannot be reached by children.
- If you will not use the product for a long time, remove the power cord from the power socket. Otherwise, a fire may result from accumulated dust, overheating, an electric shock, or electric leakage.
- Do not move or hold the product upside down only by the stand. Otherwise, the product may fall and break or cause personal injury.
- Do not put the product near a humidifier or the kitchen table. Otherwise, an electric shock or fire may result.
- The display panel becomes hot when the product is on for many hours.
- Be careful when you adjust the product angle or stand height. Otherwise, you may pinch your hand or finger. Tilting the product excessively may cause it to fall and result in personal injury.
- Do not put a heavy object on top of the product. Otherwise, product failure or personal injury may result.
- Be sure your child does not put a battery from the remote control in his mouth. If your child swallows a battery, consult a doctor immediately.
- Be sure you use specified batteries. Do not use a new and used battery together. Otherwise, a fire, personal injury, or contamination may result from an explosion or internal fluid leakage of the batteries.

- Do not set the volume really high when you use headphones. A really high volume may cause your hearing to weaken.
- Be sure the batteries are oriented in the right direction. Otherwise, a fire, personal injury, or contamination may result from an explosion or internal fluid leakage of the batteries.
- Used-up batteries (including rechargeable batteries) should be separated from general waste so that they can be collected for recycling. You can discard discharged batteries at your local recycling center or a battery dealer.

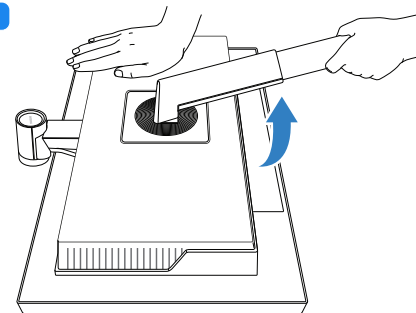
2.2 Assembling the Product

1



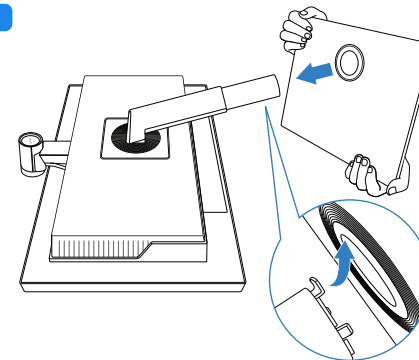
Lay the product packaging or a thick cushion on the floor, and place the product on top with the display facing down. Turn the stand to the opposite side of the camera.

2



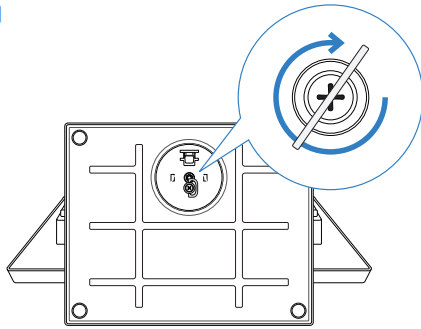
Lift the stand so that it can be connected to the base.

3



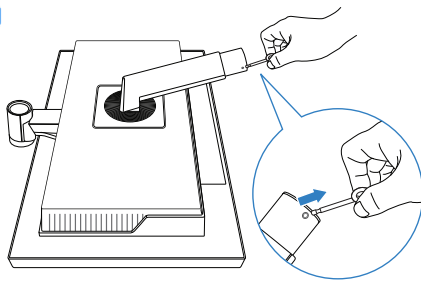
Insert the stand into the base.

4



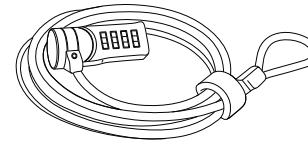
Tightly fasten the screw on the bottom of the base to the stand.

5

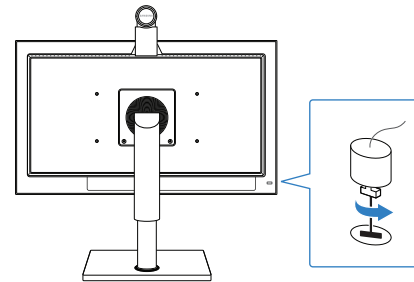


Be sure you do not remove the fixing pin from the stand before you connect the stand to the base. Otherwise, injury may result. After connecting the stand to the base, remove the fixing pin, and adjust the height of the stand. To fix the height, fasten the fixing pin.

Theft Prevention



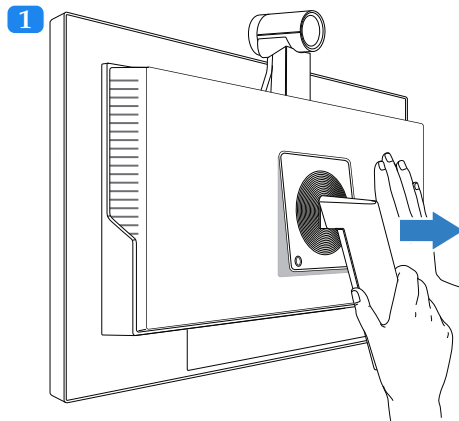
A slot for connecting an anti-theft Kensington lock can be found at the bottom right on the back of the monitor. To install your monitor in a public place, connect a lock to the monitor following the steps below:



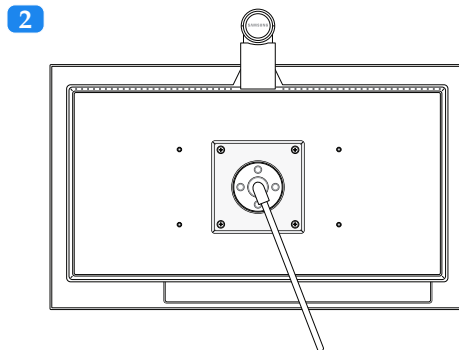
- 1 Insert the lock into the slot in the monitor.
- 2 Fasten the lock.
- 3 Connect and fix the lock cable to a heavy object such as a desk.

Mounting the Monitor to a Wall

To mount the monitor to a wall, buy and attach to the monitor a 100 × 100 or 200 × 100 mm wall-mount bracket that complies with the VESA standards:



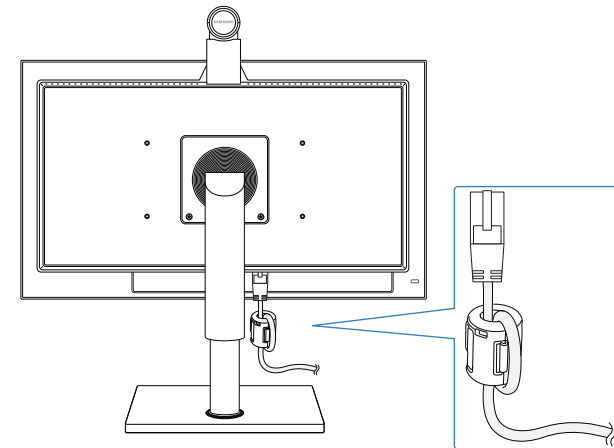
Unfasten the screw, and lift and remove the stand.



Attach the wall-mount bracket, and fasten the screws.

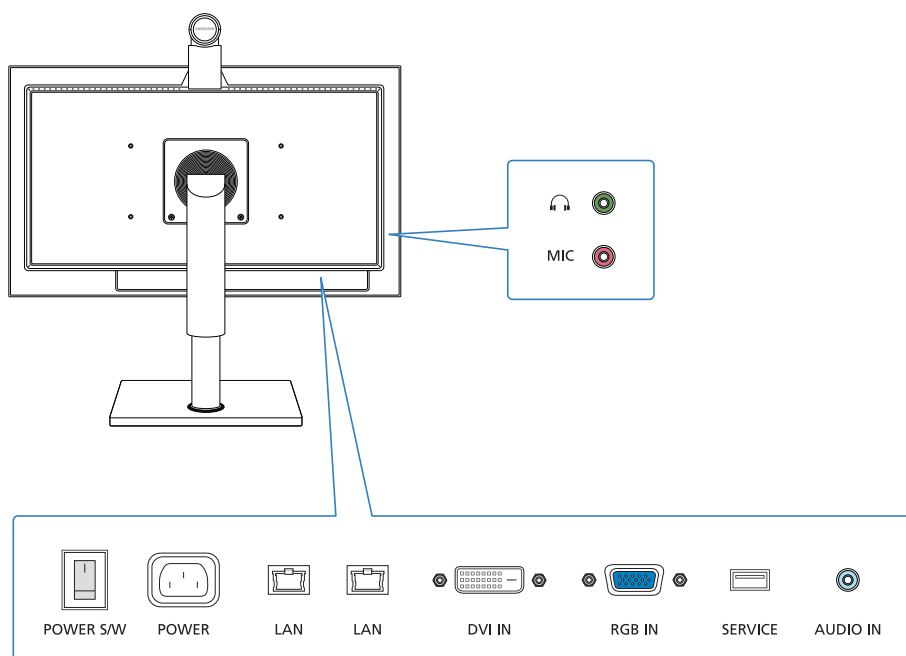
Samsung is not liable for any defect caused by using a wall-mount bracket that does not comply with the VESA standards.

Blocking Electromagnetic Waves

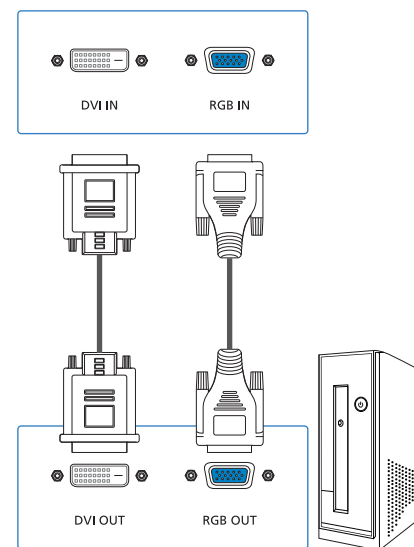


The ferrite core can be used to block electromagnetic waves. Thread the LAN cable through the ferrite core and tie a knot with the core close to the LAN port.

2.3 Connections



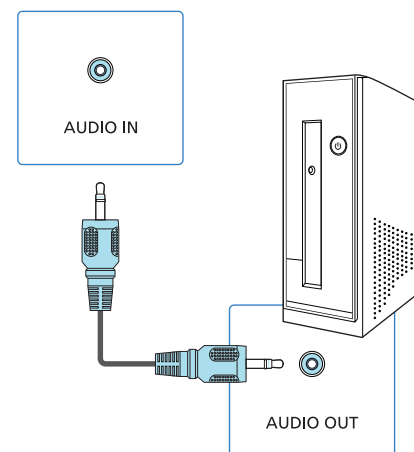
Connecting to a PC



The monitor has two video inputs for connecting to a PC. One is for DVI, and the other is for VGA. Using a digital signal, DVI offers clearer pictures than VGA which uses an analog signal. Thus, it is best to connect the monitor to a PC via DVI rather than VGA.

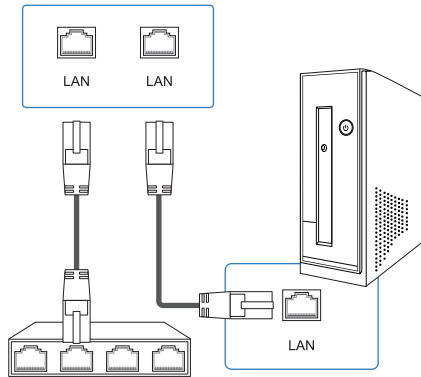
Connect the DVI cable from the DVI IN socket on the monitor to the DVI output on the PC. Alternatively, connect the VGA cable to the RGB IN socket on the monitor and RGB OUT on the PC.

The monitor can be connected to two PCs at the same time via the DVI and VGA inputs. However, you cannot view the pictures from both the PCs at the same time.

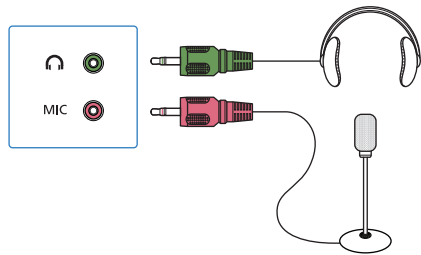



To use the monitor's speakers, instead of using external speakers, connect the audio cable from the audio output on the PC to the AUDIO IN socket on the monitor.

Connections for Video Calls



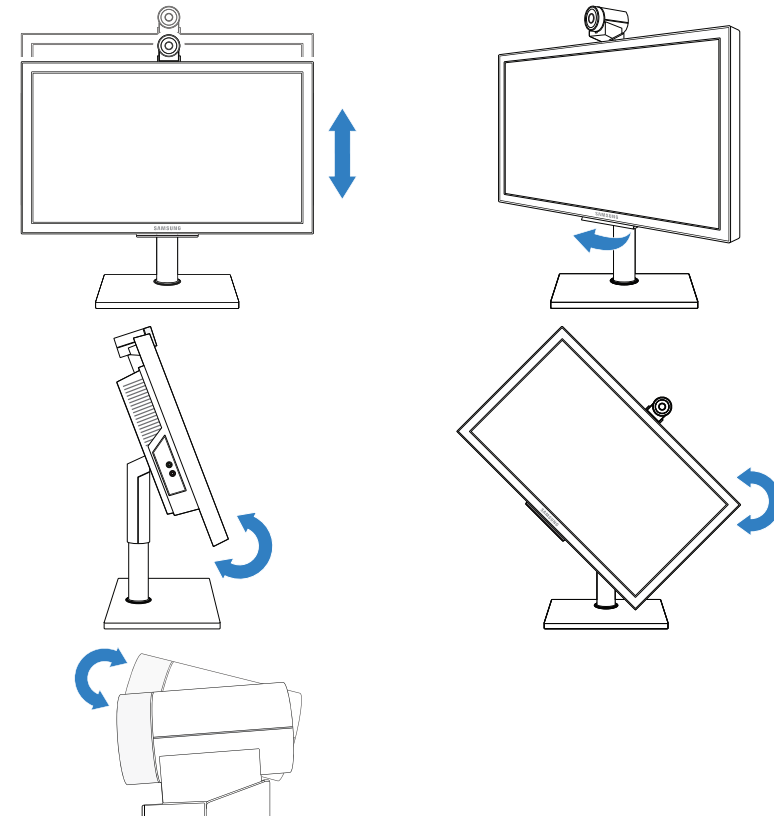
To make a video call, the monitor should be connected to a network. Connect the LAN cable from the LAN port on the router to the LAN port on the monitor. If the router has no more ports available for the monitor, connect one port on the monitor to the router and then the other port on the monitor to the PC. Then the PC can communicate with the router via the monitor.



The monitor's camera has a microphone at the bottom; however, a headset will produce clearer audio for a video call. Connect the microphone and earphones of your headset to the MIC and  jacks on the monitor respectively.

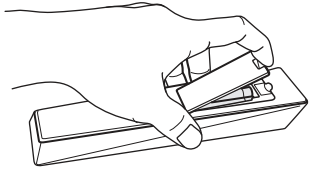
2.4 Finding the Best Viewing Angle

You can rotate or tilt the monitor in various ways, as shown below:



The monitor can be rotated to a vertical orientation. However, check if the graphics card on the PC supports a vertical display beforehand.


2.5 Powering On the Monitor



Before you power on the monitor, insert the batteries into the remote control, observing the polarity, which is marked on the base of the battery compartment.

If the monitor does not respond to the remote control, the batteries have been discharged. Be sure to replace the batteries using standard 1.5V AAA, taking into account the precautions below:

- Do not use different types of batteries together.
- Do not use a new and used battery together.
- Do not attempt to recharge discharged non-rechargeable batteries.
- It is best to remove the batteries if you are not going to use the remote for a long time.
- Do not dispose of batteries with general waste.

Plug the power cord into the power socket, turn on the power switch on the monitor, and press  on the remote control. The monitor will power on.

Video Modes



The following booting message will appear when the monitor powers on. Booting takes tens of seconds before you can make a video call.

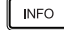
The following three types of video modes are offered.


PC: View the picture from a PC connected via the VGA input.

DVI: View the picture from a PC connected via the DVI input.

VC: View your self-image from the camera.



 displays the current video mode at the top left corner of the screen.

The current time and the monitor's IP address are displayed in VC mode, while the current time and video signal mode are displayed in the other modes. To change the video mode, press  repeatedly until the picture you want is displayed.

Video Signal Modes

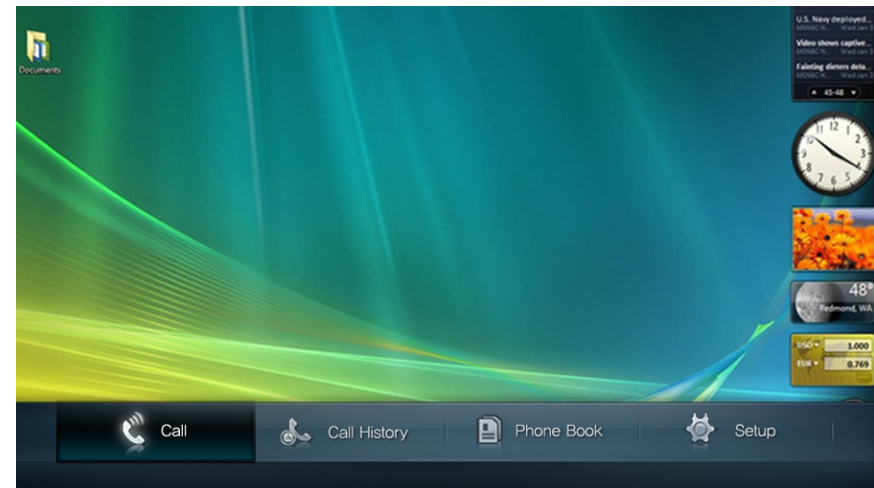
When a PC is connected to the monitor, the PC's operating system usually recognizes the monitor and starts the appropriate monitor driver. You do not need to install a monitor driver if the displayed picture is clear. A monitor driver should be installed if the displayed picture is shaky or not clear.

When the picture from the PC displays normally, configure the resolution. Check to see if the monitor is compatible with the graphics card on the PC if the picture from the PC is not displayed even though the monitor is correctly connected to the PC and the correct graphics card is selected (referring to Table 3). Refer to Windows Help for details about how to change the refresh rate and resolution.













Table 3: Video signal mode

Resolution	Horizontal frequency (kHz)	Vertical frequency (Hz)	Clock frequency (MHz)	Horizontal/Vertical polarities (H/V)
IBM, 640 × 350	31.469	70.086	25.175	+/-
IBM, 720 × 400	31.469	70.087	28.322	-/+
MAC, 640 × 480	35.000	66.667	30.240	-/-
MAC, 832 × 624	49.726	74.551	57.284	-/-
MAC, 1152 × 870	68.681	75.062	100.000	-/-
VESA, 640 × 480	31.469	59.940	25.175	-/-
VESA, 640 × 480	37.861	72.809	31.500	-/-
VESA, 640 × 480	37.500	75.000	31.500	-/-
VESA, 800 × 600	35.156	56.250	36.000	+/+
VESA, 800 × 600	37.879	60.317	40.000	+/+
VESA, 800 × 600	48.077	72.188	50.000	+/+
VESA, 800 × 600	46.875	75.000	49.500	+/+
VESA, 1024 × 768	48.363	60.004	65.000	-/-
VESA, 1024 × 768	56.476	70.069	75.000	-/-
VESA, 1024 × 768	60.023	75.029	78.750	+/+
VESA, 1152 × 864	67.500	75.000	108.000	+/+
VESA, 1280 × 800	49.702	59.810	83.500	-/+
VESA, 1280 × 800	62.795	74.934	106.500	-/+
VESA, 1280 × 960	60.000	60.000	108.000	+/+
VESA, 1280 × 1024	63.981	60.020	108.000	+/+
VESA, 1280 × 1024	79.976	75.025	135.000	+/+
VESA, 1440 × 900	55.935	59.887	106.500	-/+
VESA, 1440 × 900	70.635	74.984	136.750	-/+
VESA, 1600 × 1200	75.000	60.000	162.000	+/+
VESA, 1680 × 1050	65.290	59.954	146.250	-/+
VESA, 1920 × 1080	67.500	60.000	148.500	+/+

2.6 Navigating between Menus



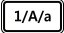
You can navigate between menus using the following buttons:

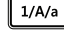

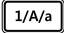
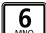



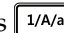
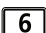
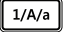


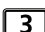
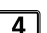
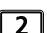
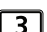
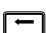
- 1  opens the main menu screen.
- 2  and  navigate between options in the main menu.
- 3  selects a main menu option and opens its submenu.
- 4  and  move between submenu options.
- 5  and  confirm the selected submenu option.
- 6  and  return to the parent menu.
- 7  exits the current menu.
- 8  opens the Setup menu directly without accessing the main menu.

2.7 Keyboard Modes

You can type in uppercase letters, lowercase letters, numbers, and several symbols using three types of keyboard modes. The current keyboard mode is shown in the right side of the field: ABC indicates uppercase mode, abc lowercase mode, and 123 number mode.



To change the keyboard mode, press  repeatedly until the keyboard mode you want is displayed. To type in John@Office, follow the steps below:

- 1 To type an uppercase *J*, press  to switch to uppercase mode, and press .
- 2 To type a lowercase *o*, press  to switch to lowercase mode, and press  three times.
- 3 To type *h*, press  twice.
- 4 To type *n*, press  twice.
- 5 To type @, press  twice.
- 6 To type an uppercase *O*, press  to switch to uppercase mode, and press  three times.
- 7 To type a lowercase *f*, press  to switch to lowercase mode, and press  three times.
- 8 To type the next *f*, wait until the cursor advances or press  to advance the cursor, and then press  three times.
- 9 To type *i*, press  three times
- 10 To type *c*, press  three times.
- 11 To type *e*, press  twice.
- 12 To delete the previous letter, press .

- 13 To type a space, switch to uppercase or lowercase mode, and press .

2.8 Power-saving Modes




As shown in Table 4, there are three types of power supply modes. The monitor enters active mode after you have pressed  and the monitor has turned on.

Table 4: Power specification

Input power	100–240 V
Active mode	Less than 85 W
Standby mode	Less than 35 W
Max. power-saving mode	Less than 3 W

Max. Power Saving Mode


With this mode active, the monitor can save energy by automatically switching itself to maximum power-saving mode when it is in DVI or PC mode and the PC is turned off and is no longer sending a video signal.

- 1 If the monitor is in VC mode, press  to switch to DVI or PC mode.
- 2 Press  to open the Setup screen.



- 3 Set Max. Power Saving to On.




After the PC has turned on, the monitor will automatically turn itself on when it receives a video signal from the PC. However, the monitor will not automatically power on, even if it receives a video signal, if it was powered off by the  button.

You cannot receive an incoming call in maximum power-saving mode; the monitor will not automatically power on.

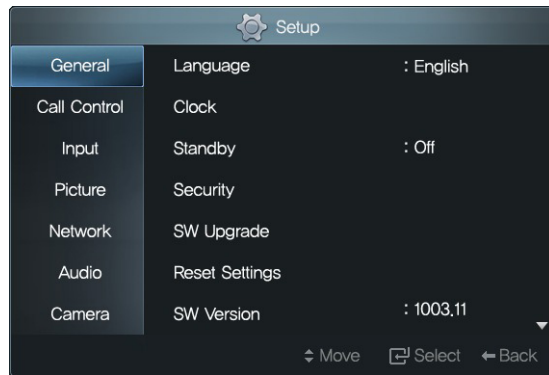
Refer to Windows Help for details about how to configure power saving settings for your PC.

Standby Mode

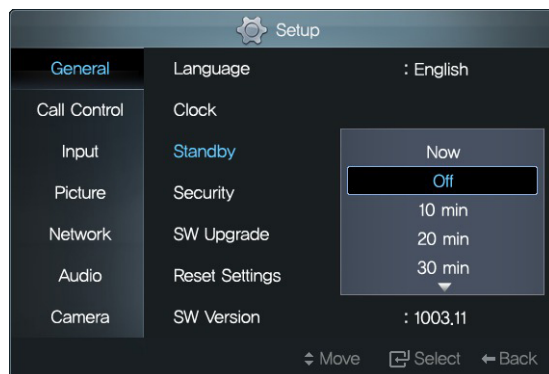
In VC mode, you can set the monitor to automatically switch to standby mode after the remote control has been left idle for a specified time:

- 1 If the monitor is in PC or DVI mode, press  to switch to VC mode.


- 2 Press  to open the Setup screen.




- 3 Select an interval for activating Standby mode. Each interval is a multiple of 10 minutes from 10 to 60 minutes.



If Standby is set to 10 minutes, the monitor will automatically turn off and switch to standby mode after the remote control has been left idle for 10 minutes.

- 4 To turn on the monitor again, press any button other than .

The monitor will automatically turn on when a call is received during standby mode. However, the monitor will not automatically power on, even if it receives a call, if it was powered off by the  button.

3 Network and Call Settings

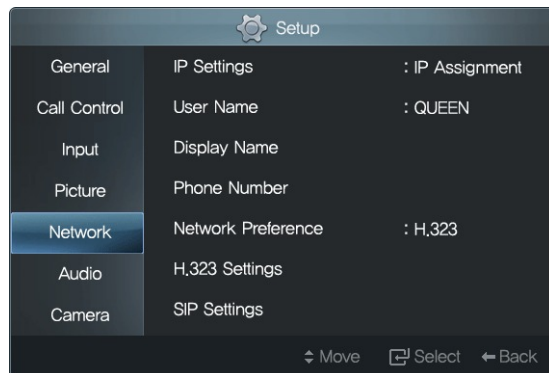
3.1 Network Settings

Consult your network administrator, and configure the network settings for the monitor. The IP address can be assigned in one of the following two ways.

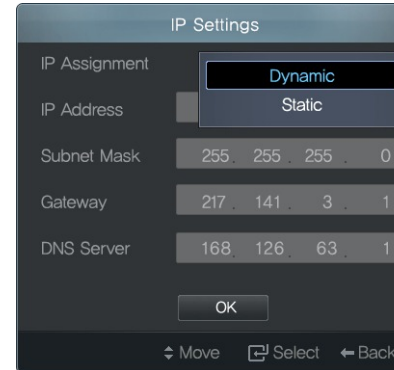
Static IP address: The same IP address will always be assigned to the monitor whenever it is powered on.

Dynamic IP address: A different IP address will be assigned to the monitor each time it is powered on.

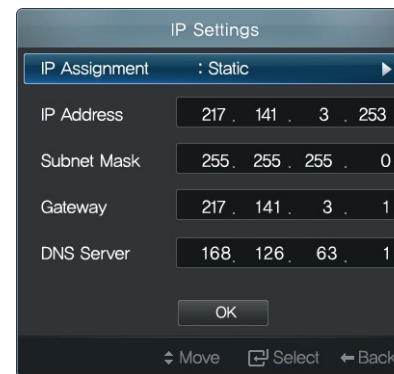
- 1 Press **SET UP** to open the Setup screen, and select Network.



- 2 To assign a dynamic IP address, set IP Assignment to Dynamic.

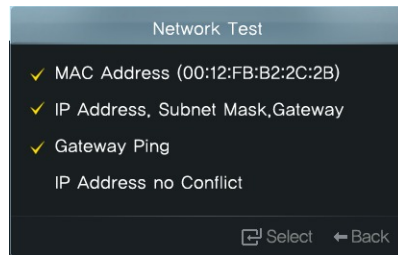


- 3 To assign a static IP address, set IP Assignment to Static, and fill the IP Address, Subnet Mask, Gateway, and DNS Server fields.

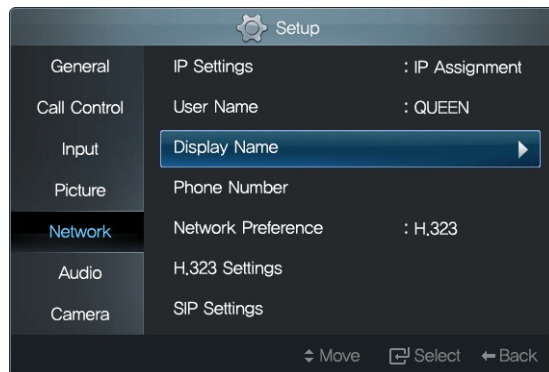


- 4 Select OK to save the new settings.
- 5 You are advised to check that the IP settings are valid; select Network Test. While the test is performed, the valid items will be indicated by a

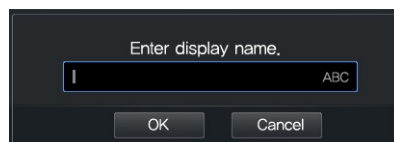
✓ whereas the invalid items will be indicated by a ✗.



- 6** Assign the monitor a name so that it can be identified by other devices connected to the network.

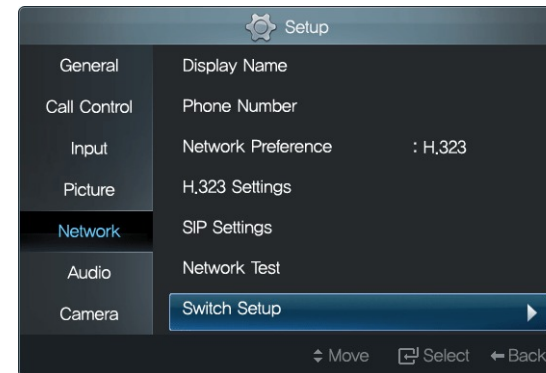


Select Display Name, and enter a name.

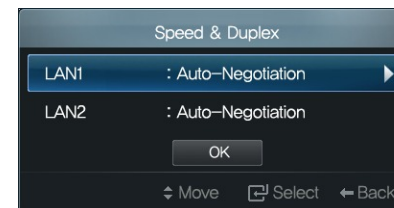


The data transmission rate and mode are determined while the monitor tries to connect to a router. Usually, the monitor is automatically connected; however, the connection attempt will sometimes fail. When the connection fails, configure the data transmission rate and mode manually as follows:

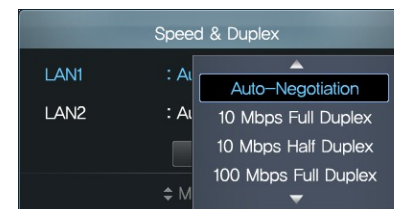
- 1** Select Speed & Duplex.



- 2** Select the LAN port connected to the router.



- 3** Adjust several options alternately until the connection succeeds.



3.2 Data Transmission Mode

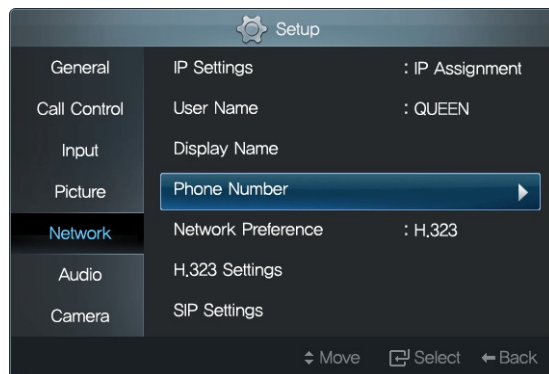
You can make or receive calls using one of the following data transmission protocols:

- H.323
- Session Initiation Protocol

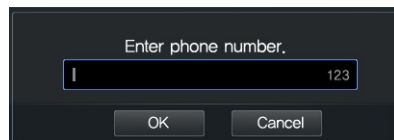
H.323 Data Transmission

To make calls using the H.323 telephone number mode (E.164), configure the settings as follows:

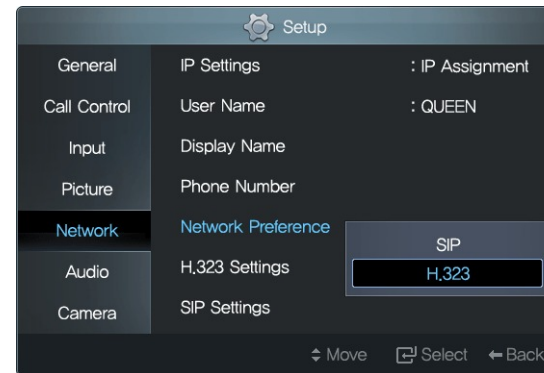
- 1 Press **SET UP** to open the Setup screen, and select Network.



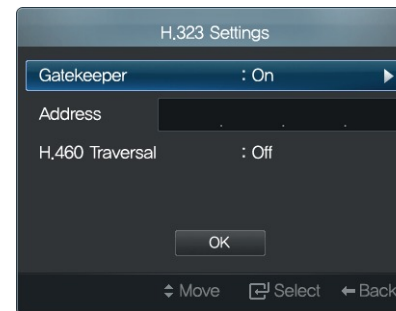
- 2 Select Phone Number and enter a number. Dial by user name (alias) is available in H.323 through the gatekeeper.



- 3 Set Network Preference to H.323.



- 4 If an H.323 gatekeeper is available, select H.323 Settings.

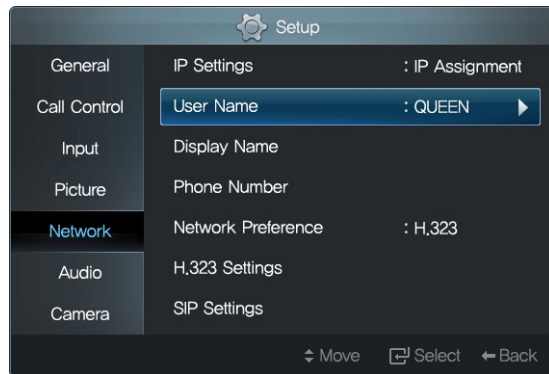


- a) Set Gatekeeper to On.
 - b) Fill the gatekeeper IP in the Address field.
 - c) If data transmission fails due to firewall restrictions, set H.460 Traversal to On, and fill the H.460 server IP address.
- 5 Select OK to save the new settings.

SIP Data Transmission

To make calls using the SIP user name mode, configure the settings as follows:

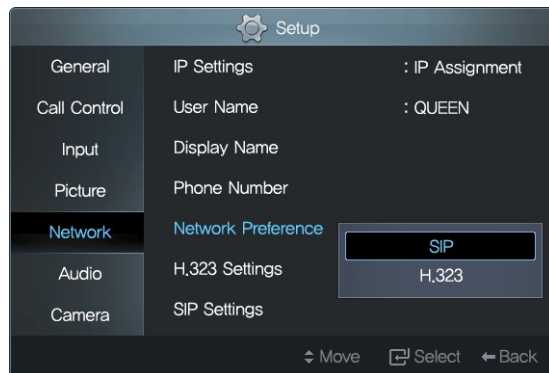
- 1 Press **SET UP** to open the Setup screen, and go to Network.



- 2 Select User Name and enter a name. In SIP you can use both name and number in URI for dialing.



- 3 Set Network Preference to SIP.



- 4 Select SIP Settings.



- a) Set SIP Proxy Server to On.
- b) Fill the Display Name, Server Address, and Password fields.

- 5 Select OK to save the new settings.

H.323 and SIP modes cannot be used at the same time. To change the current H.323 mode to SIP, set Network Preference to SIP.

NAT Traversal

You can make or receive a call while being connected to ADSL or Cable router from home or office. The system will use Network Address Translation from internal IP to External IP. The system will use external HTTP server to discover the external IP to be used.

The external IP could be changed without note by Internet Service Provider.


- 1 Press **SET UP** to open the Setup screen and go to Network.
- 2 Select and open NAT Traversal.


- 3 Set NAT Traversal to Yes.
- 4 Use NAT Auto Discovery on for system to discover it's external public IP automatically.
- 5 Following OK, discovered external public IP will be displayed.
- 6 Use NAT Auto Discovery off for manual enter public IP address.

When NAT Traversal is set to Yes then Gatekeeper and H.460 Traversal must be set to Off and vice versa.

- 7 On Network select H.323 Settings and set Gatekeeper and H.460 Traversal to Off.
- 8 On Network select Ports Conflagrations and verify the system TCP/UDP configured ports are enabled in the router. Refer to system ports documentation.

When using NAT Traversal you need to set router to port forwarding.

 indicates that the LAN cable is not connected. Correct the LAN cable connection if this symbol appears at the top right corner of the screen.

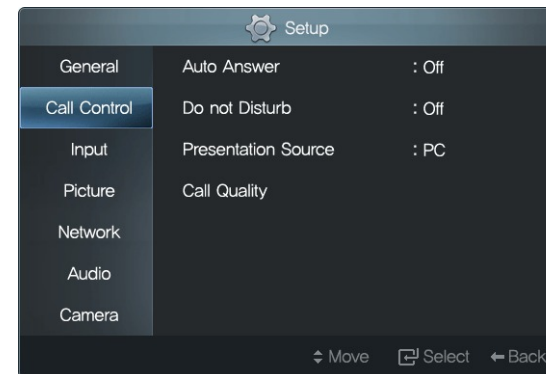
 indicates that an IP address conflict has occurred. Change the IP address if this symbol appears at the top right corner of the screen.

3.3 Call Settings

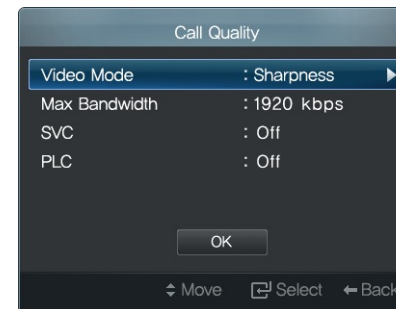
Call Quality

You can adjust the sharpness of your image that is shown to the remote caller.

- 1 Press **SETUP** to open the Setup screen, and go to Call Control.

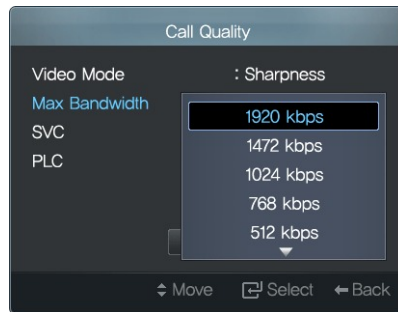


- 2 Select Call Quality. The following screen will appear.



- 3 To increase the sharpness, select a high value from Max Bandwidth. Use Max Bandwidth to configure the call resolution high definition or standard definition and call frame rate. For 1024 kbps and above HD

resolution, max frame rate will be used.



- 4 A higher sharpness will compromise simultaneity. For instance, a picture of you waving a hand will appear delayed for a remote caller. For simultaneity, set Video Mode to Motion.



- 5 A bad network connection sometimes corrupts the picture, which appears as a mosaic, during a call. Set SVC to On. Clear and normal picture will be restored. SVC will take effect while remote system is capable to support it; for example, RADVISION VC240 and Elite MCU.



- 6 A bad network connection also causes freeze picture during a call. Set PLC to On. Video will not freeze in case of severe loss on network. PLC will be used in case SVC is not active or not supported by remote system.



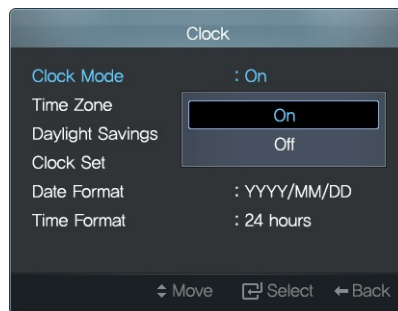
Time

Set the clock precisely so your video calls will be logged accurately.

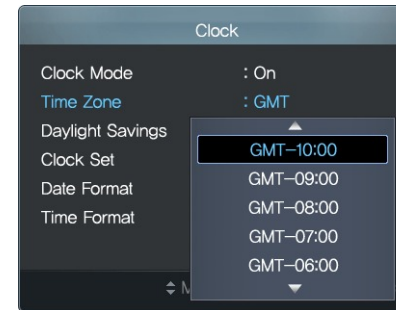
- 1 Press **SET UP** to open the Setup screen, and select Clock.



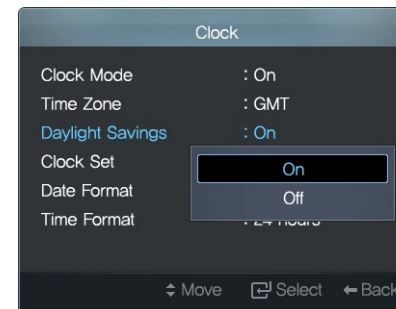
- 2 The time server will allow the clock to always have the precise time. To use the time server, set Clock Mode to On.



- 3 Select the Time Zone corresponding to your region.

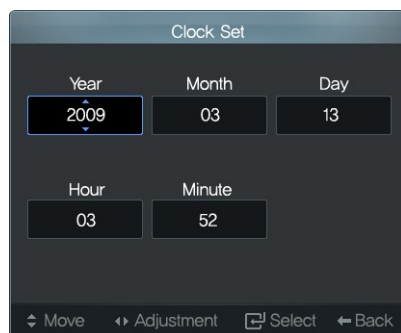


- 4 If Daylight Saving Time is in effect in your region, set Daylight Savings to On.

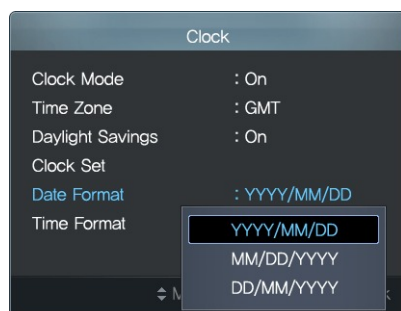


- 5 If you do not want to use the time server, select Clock Set, and enter the date and time manually. Increase or decrease the date or time using the **▲** or **▼** button respectively. Alternatively, manually enter a date

or time using the number keys on the remote.

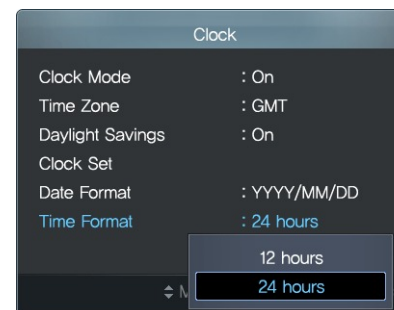


- 6** In Date Format, DD indicates the day, MM the month, and YYYY the year. If Date Format is set to DD/MM/YYYY and a call was made on July 18, 2010, the date will be displayed as 18/07/2010.



- 7** If Time Format is set to 12 Hours and a call was made at 6:24 p.m., the time will be displayed as PM 06:24. If you do not want to display AM or PM, set Time Format to 24 Hours. Then the time will be displayed

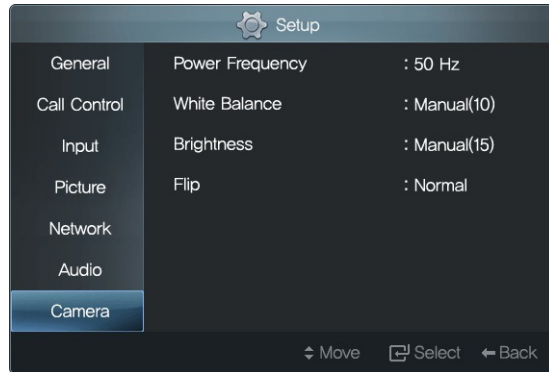
as 18:24.



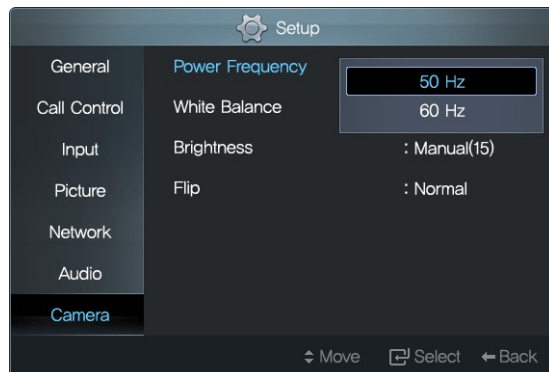
Camera

Your picture may appear too dark or bright, or different in color for your remote caller, depending on your ambient light intensity. Change several settings so the remote caller can see you clearly:

- 1 Press **SET UP** to open the Setup screen, and go to Camera.

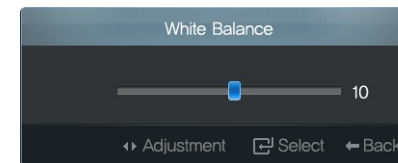


- 2 Select the correct frequency from Power Frequency. Otherwise, the picture may continually move upward.

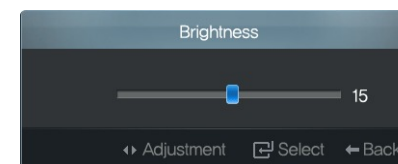
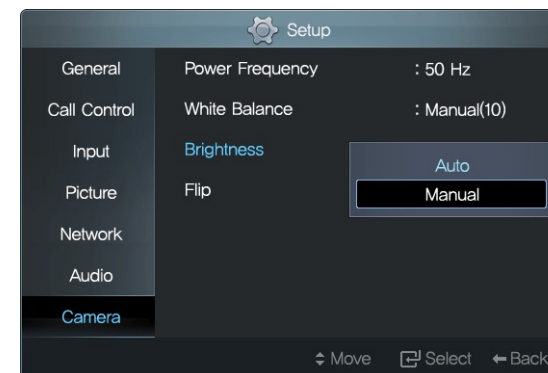


- 3 Set White Balance to Manual, and adjust the white balance. However,

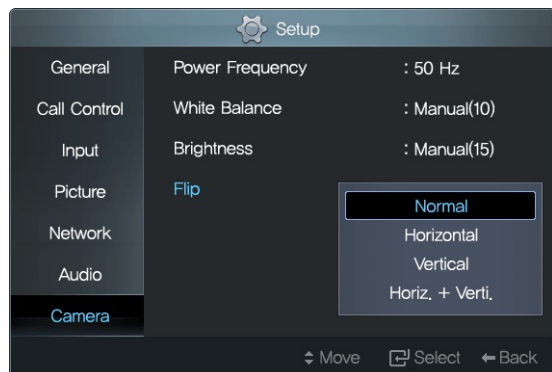
it is best to select Auto for most occasions.



- 4 Set Brightness to Manual, and adjust the brightness. However, it is best to select Auto for most occasions.



- 5 Rotating your monitor to a vertical orientation will rotate the camera, and thus your image will appear rotated on the remote caller's screen. To resolve this, the remote caller should also rotate his monitor to a vertical orientation, and you and the remote caller should set Flip to Horiz. + Verti.



White Balance is used to generally adjust the color intensity for making the brightest area in the picture white.

4 Video Call

4.1 Making a Call

You can make a call, following the steps below:

- 1 Press .



The screen will display the recent-call log on the left, the phone number field in the middle, and your image on the right.

- 2 If you want to hide your image or make a call to someone without a camera, set Call Type to Voice.



- 3 Move the cursor to the input field, and enter the IP address of the remote caller.



Refer to §2.7 for details about how to type.

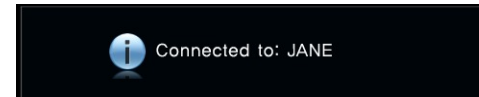
- 4 Alternatively, you can select a phone number from the recent-call log. The selected phone number will be copied to the input field.





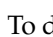




- 5 Press .

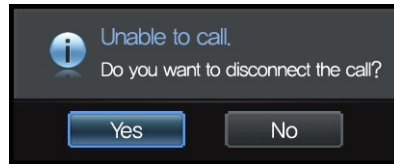


The message Connected to will appear when the remote caller answers the call.



- 6 To mute your voice during a call, press  to disable the microphone.  will appear at the top right corner of the screen. To enable the microphone, press  again.
- 7 To disable the speaker during a call, press .  will appear at the top right corner of the screen. To enable the speaker, press  again.

- 8 To end the call, press .



Select Yes. The call will be disconnected.

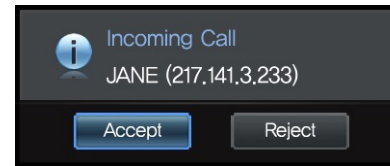
- 9 To view the recent-call log, select Call History. Refer to §4.5 for details about the recent-call log.



- 10 To open the phone book, select Phone Book. Refer to §4.4 for details.



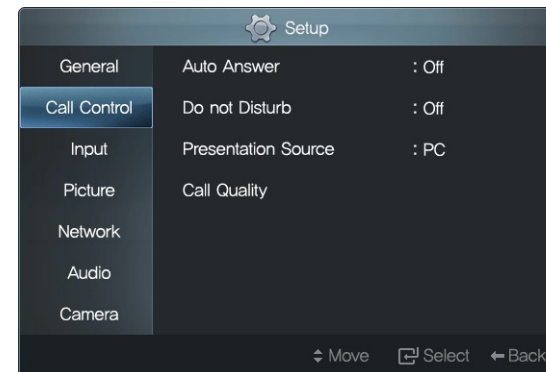
4.2 Answering a Call



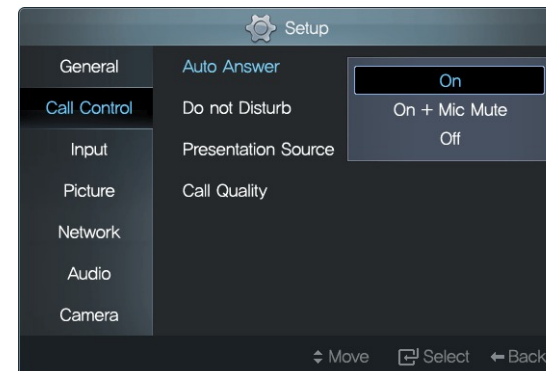
An incoming call will be indicated by a dialog box as shown. Select Accept to accept the call, or select Reject to refuse the call.

Configure the call answering settings, following the steps below:

- 1 Press  to open the Setup screen, and go to Call Control.

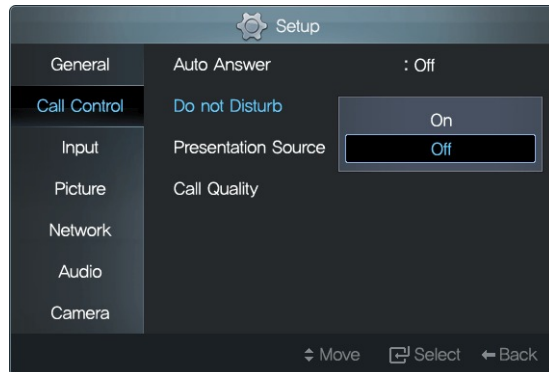


- 2 If you want to automatically connect to an incoming call, set Auto Answer to On.

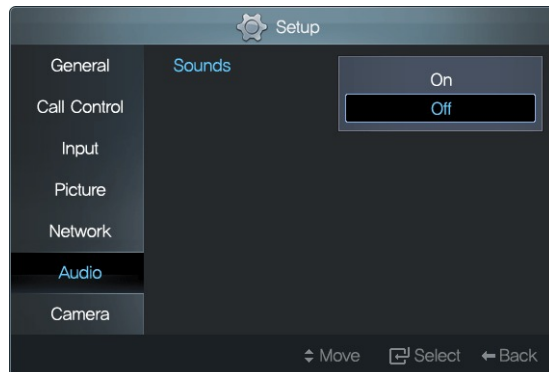


When On + Mic Mute is selected, an incoming call will automatically be connected, but your voice will not be heard by the remote caller.

- 3 If you want to refuse all incoming calls, set Do not Disturb to On.





- 4 An incoming call will be indicated by a ringtone. If you want to mute the ringtone, select Audio, and set Sounds to Off.



4.3 Screen Layout

The image of the remote party will appear when your call is accepted.

The  button can be used to change the screen layout of yours and the remote caller's as required. Each time you press , the screen layout will change as shown below: The blue figure represents the remote caller, and the green figure represents you.

- In DVI or PC mode

- A call is connected

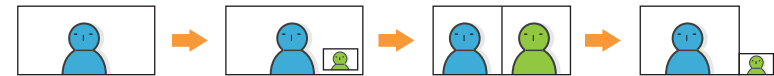


- A call is not connected

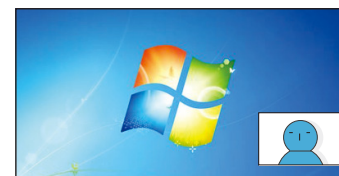


- In VC mode

- A call is connected



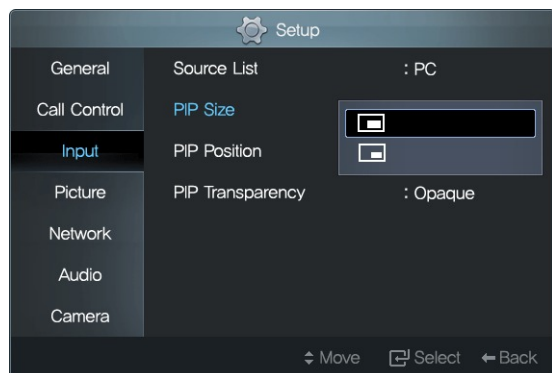
- A call is not connected



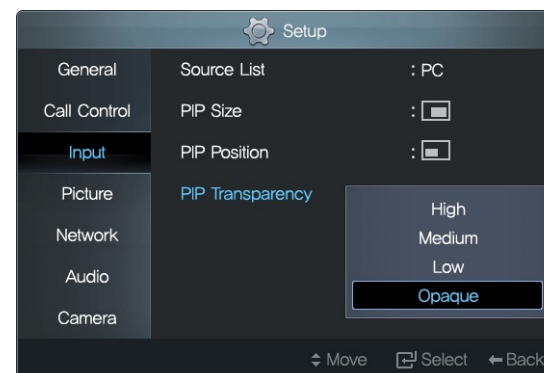
You can change the size and location of the smaller picture in this screen layout.

- 1 Press  to open the Setup screen, and go to Input.

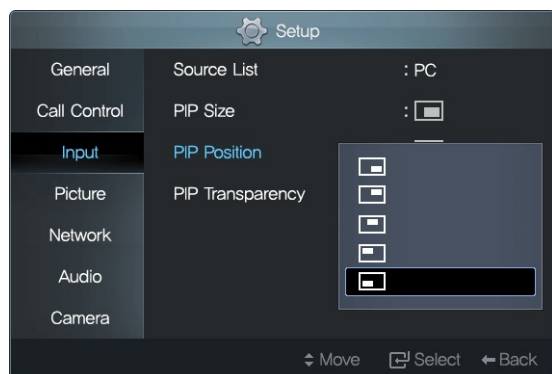
- 2 Select a size from PIP Size. Two sizes are available.



ping image; go to PIP Transparency and select High, Medium, or Low.




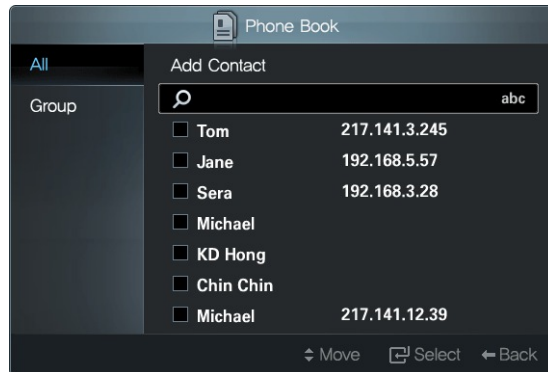
- 3 Select a location from PIP Position. Five locations are available: bottom right, top right, top center, top left, and bottom left.



- 4 The area on the screen concealed by the smaller picture will not be shown. To expose a concealed area, adjust the opacity of the overlap-

4.4 Making a Phone Book

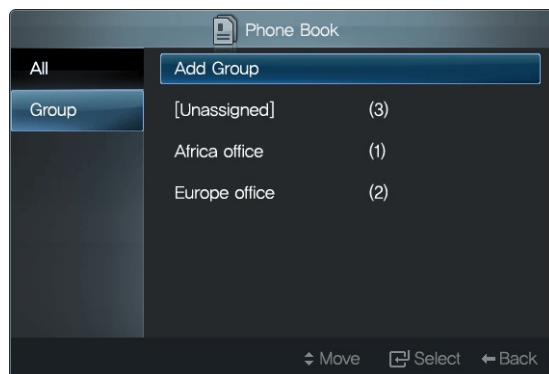
You can make calls easily by using the phone book. To open the phone book, press .



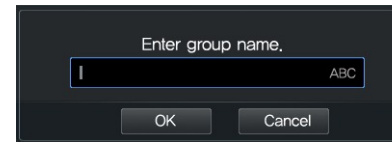
Adding a Group

It is best to create a group before adding a phone number so you can search and manage numbers easily.


- 1 Go to Group and select Add Group. The number in parentheses next to each group name indicates the number of contacts.

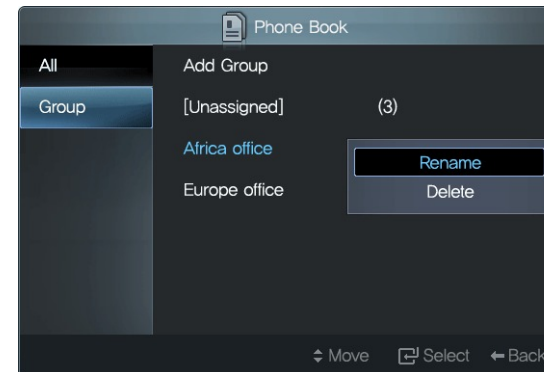


- 2 Enter the name of a group, and select OK to save the name.

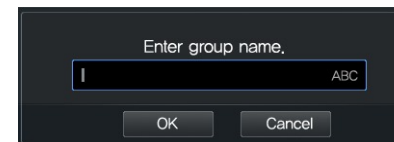


Renaming a Group

- 1 Select a group, and press .




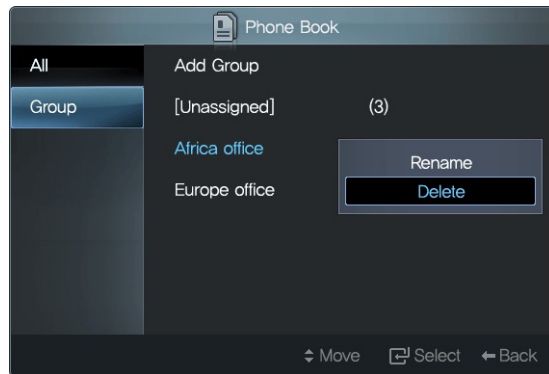
- 2 Select Rename.



Enter a new group name, and select OK to save the change.

Deleting a Group

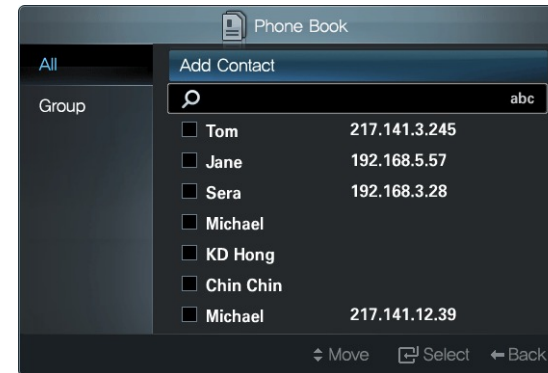
- 1 Select a group and press .



- 2 Select Delete. The selected group will be deleted, and its contacts will be moved to the Unassigned group.

Adding a Contact

- 1 Go to All and select Add Contact.



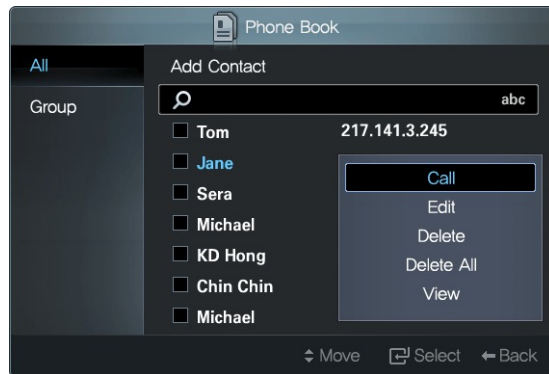
- 2 Enter a contact name in the Name field, and fill at least one of the IP, URI, and Phone Number fields.

 A screenshot of the 'Add Contact' dialog box. It contains several input fields: 'Name' (with a cursor), 'IP', 'URI', and 'Phone Number'. Below these is a 'Group' dropdown menu. At the bottom are 'OK' and 'Cancel' buttons, and navigation icons for 'Move' and 'Back'.

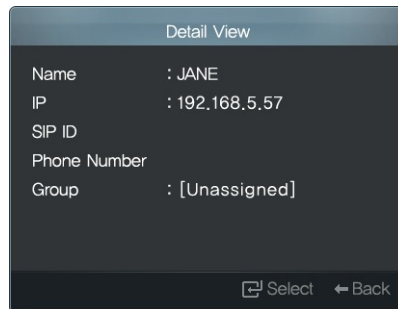
- 3 Specify Group, and select OK to save the new contact information.

Editing a Contact

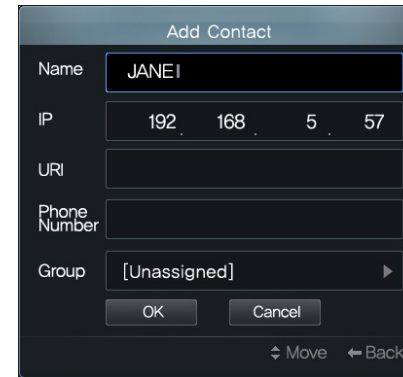
- 1 Select a contact and press .



- 2 To view details of the contact before editing, select View.



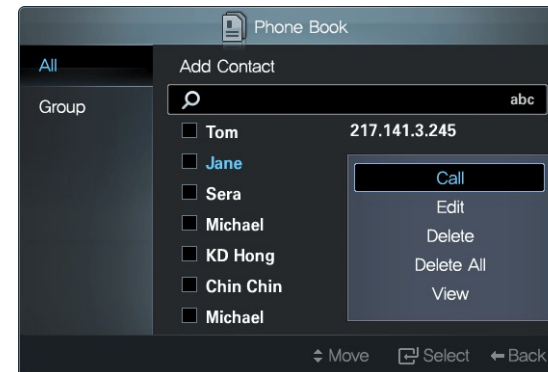
- 3 Select Edit and change the information.



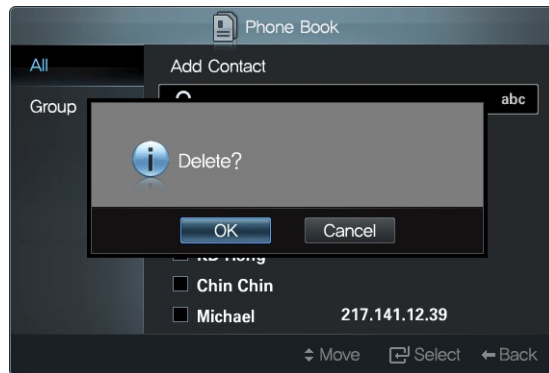
Select OK to save the changes and exit.

Deleting a Contact

- 1 Select a contact and press .

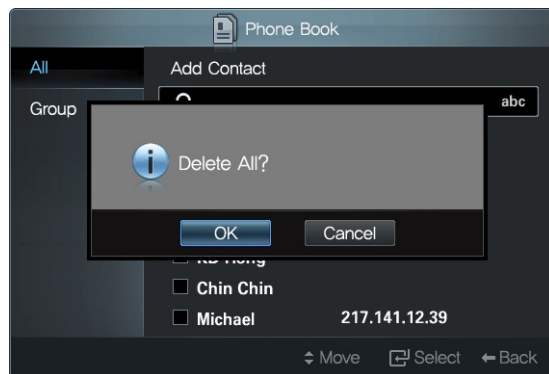


- 2 Select Delete.



Select OK. The contact will be deleted.

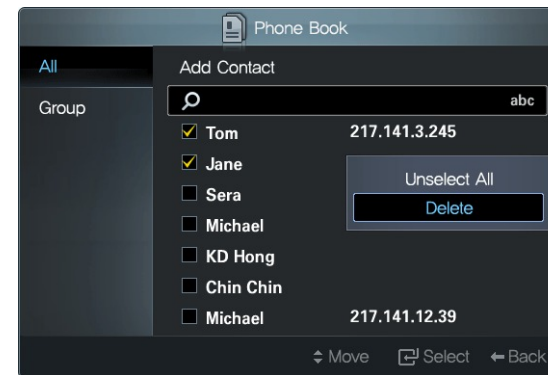
- 3 To delete all contacts, select Delete All.



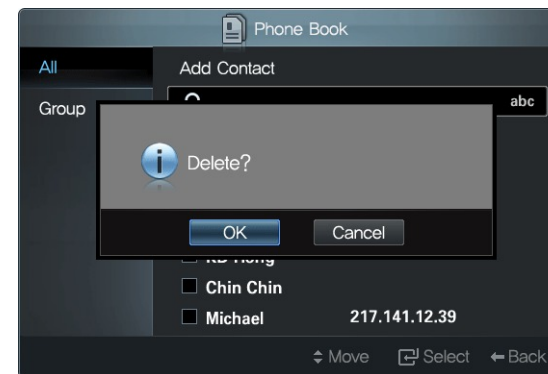
Select OK. All the contacts will be deleted.

- 4 To delete more than one contact at the same time, select the contacts and

press . The selected contacts will be indicated by a .




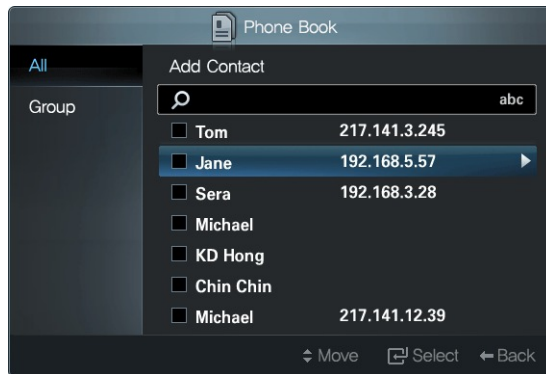
- 5 After selecting all the contacts you want to delete, press with the last selected contact highlighted, and select Delete.



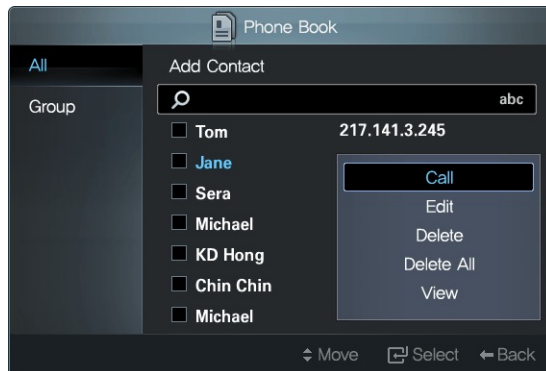
Select OK. The selected contacts will be deleted.

Making a Call

Select a contact and press .




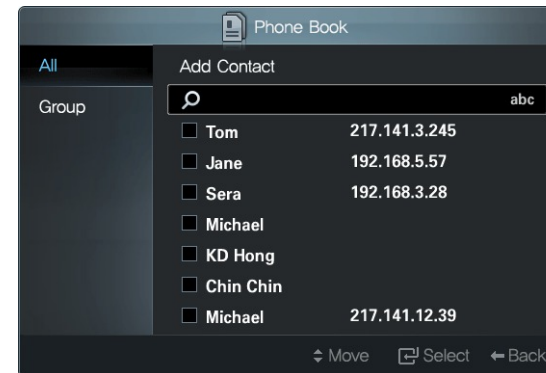
Alternatively, press  and select Call.



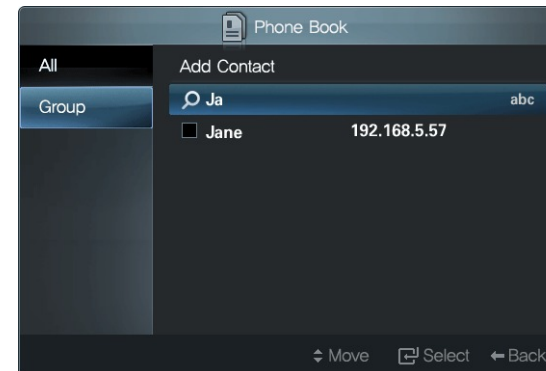
Searching a Contact

You can search a contact using the contact name or IP address.

- 1 Press  to open the phone book.



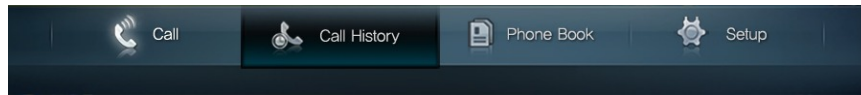
- 2 Move the cursor to the input field.



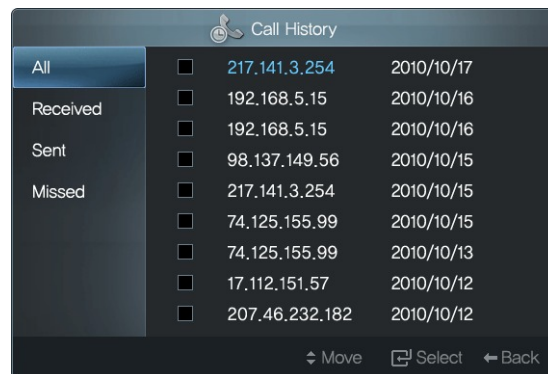
- 3 Enter capital or lowercase letters to search for contacts with names containing the same letters.
- 4 Enter numbers to search for contacts with IP addresses containing the same numbers.

4.5 Recent-Call Log

To view the recent-call log, press  and select Call History.




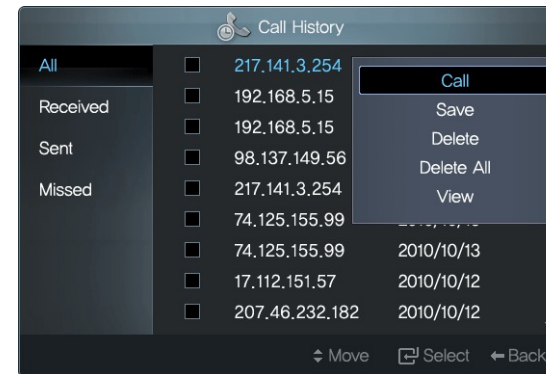
Alternatively, press  and select Call History.



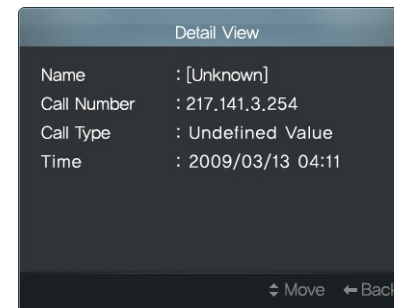
- To view the incoming-call log, select Received.
- To view the outgoing-call log, select Sent.
- To view the missed-call log, select Missed.

Viewing Call Details from the Call Log


1 Select a call from the call log, and press .

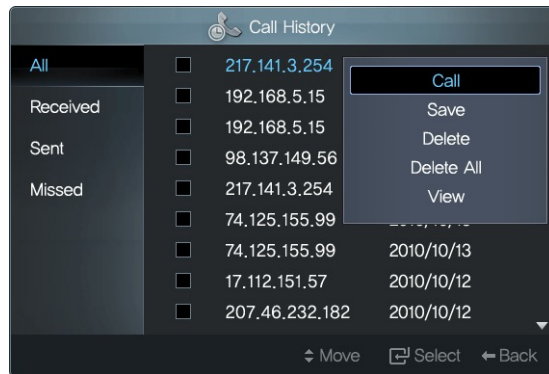


2 Select View. Details showing when the call was made and how long it lasted will appear.

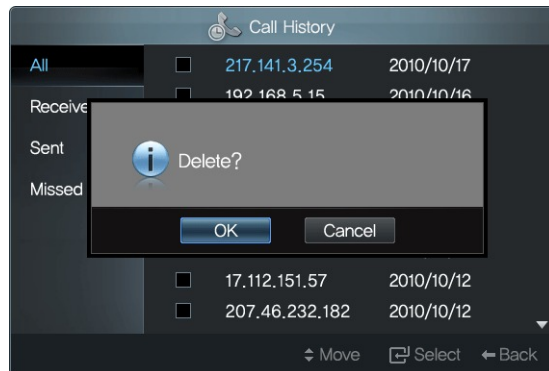


Deleting a Call from the Call Log

- 1 Select a call from the call log, and press .

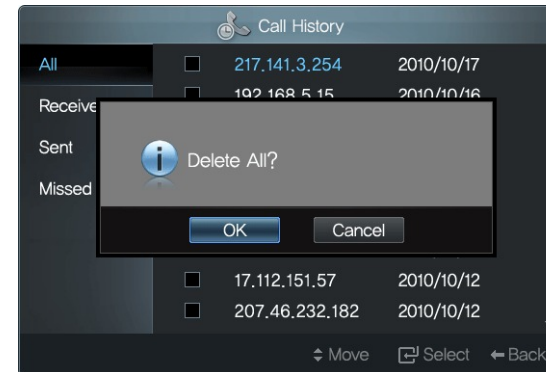


- 2 Select Delete.





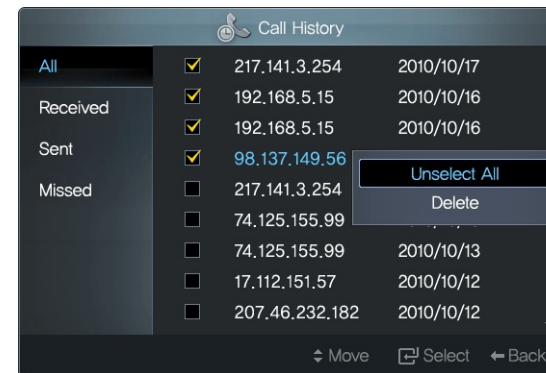
Select OK. The call will be deleted.


- 3 To delete all the calls from the call log, select Delete All.



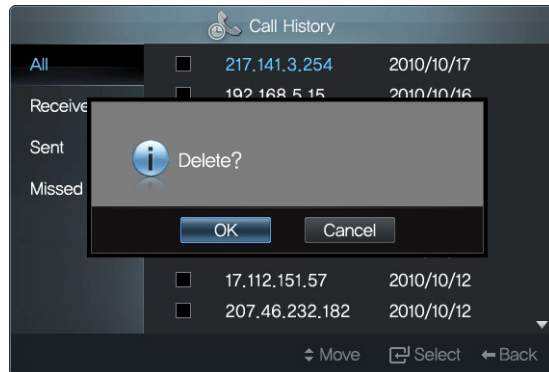
Select OK. All the calls in the call log will be deleted.

- 4 To delete more than one call from the call log at the same time, select the calls and press . The selected calls will be indicated by a .




- 5 After selecting all the calls you want to delete, press  with the last

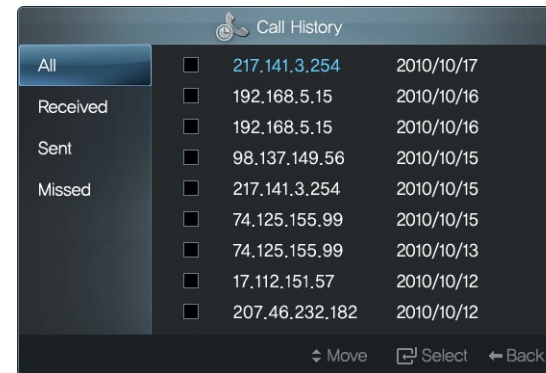
selected call highlighted, and select Delete.



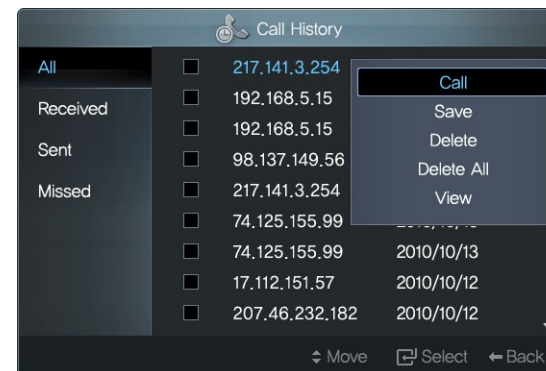
Select OK. The selected calls will be deleted from the call log.

Making a Call

Select a call from the call log, and press .




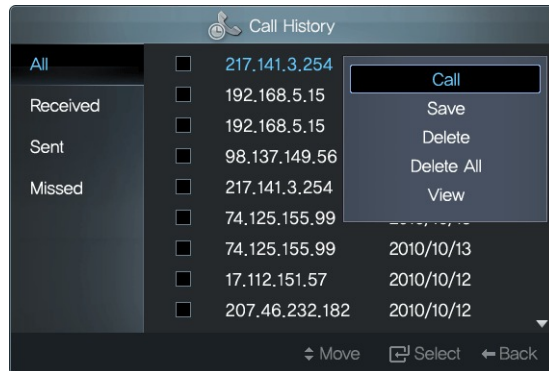
Alternatively, press  and select Call.



Adding a Contact to the Phone Book

You can add a contact from the call log to the phone book.

- 1 Select a call from the call log and press .






- 2 Select Save.



Select OK to save the new contact and exit.

4.6 Zooming a Remote Caller's camera

You can zoom in or out the remote caller's camera if it has the zooming function.

- 1 Select the remote caller's camera using the  button.
- 2 To zoom in the remote caller's camera, press .
- 3 To zoom out the remote caller's camera, press .

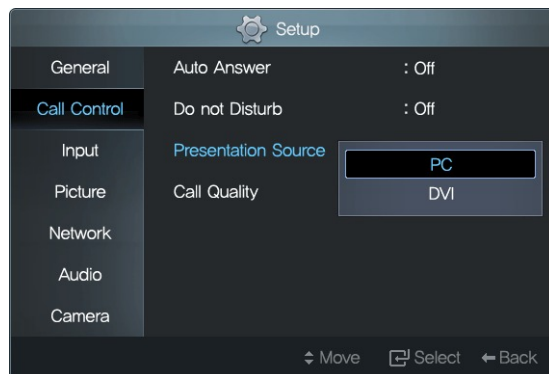
The camera on VA240 does not offer the zooming function.

4.7 Remote Presentation



You can send the picture from your computer to the remote caller and give a remote presentation during a call:

- 1 Press **SET UP** to open the Setup screen, and go to Call Control. Set Presentation Source to DVI if the monitor is connected to the PC via DVI. Otherwise, select PC.



- 2 Press **PC**. The picture from your computer will replace the remote party's image on his screen.
- 3 To stop the remote presentation, press **PC** again.

The remote presentation function is available only during an H.323 call. Only one caller can give a remote presentation at a time.

It is not possible to do a remote presentation with resolution of 1600 X 1200.

5 Video Conferencing with RADVISION SCOPIA Systems

You can use VC240 by itself for a high-definition video call between two people (point-to-point video call). Enjoy additional features such as centralized management, multi-party conferencing, recording and streaming, and firewall traversal by adding a video conferencing system with RADVISION SCOPIA.



RADVISION SCOPIA is a family of products delivered as network appliances and software, optimized to work with your VC240. Using RADVISION SCOPIA, you can quickly deploy a scalable visual-communication network and centrally manage the video network, enable multi-party meetings, and extend a video conference to any laptop across any firewall.

Multi-party (Multipoint) Conferencing

Video communication with the VC240 can be more effective and efficient with Multipoint (Multi-Party) Conferencing. This is where more than one participant connects simultaneously. With multipoint conferencing, VC240 allows users to see and hear several other participants as they are all in the same location-in a virtual conference room.



Multi-party call

Point-to-point call

Multipoint conferencing is accomplished by a Multipoint Conferencing Unit (MCU), a device that manages a multipoint conference by connecting multiple sites into the same video conference. RADVISION's SCOPIA Elite MCU offers 1080-p, high-definition processing and personal layouts for each participant. You, along with other participants, control SCOPIA Elite conferences with the VC240 remote control; you can mute participants, change the video layouts, and invite other users to the conference.

High-end Desktop Video Conferencing



Managers and executives want ways to easily extend video conferences to large numbers of remote and desktop users and make communication more efficient, easier, and broader in reach. RADVISION's SCOPIA Desktop al-

allows users to take conferencing wherever they go. SCOPIA Desktop is designed to meet the demands of high-performance video conferencing with a standard PC and Internet connection. The latest in video technology are included, providing HD H.264 format for viewing both participants and for data collaboration. The audio system provides echo cancellation, background noise suppression, and is highly resistant to network errors common on the Internet.

SCOPIA Desktop is a simple web-browser plug-in that is centrally managed and deployed on a PC without complex licensing fees or installation issues. Click on a link and include teleworkers in meetings, participate in video conferences from the road, collaborate with partners and suppliers, and seamlessly connect through firewalls.

Managing a Video Network

VC240 system administrators and users can be significantly more effective by using a central-management system to perform tasks such as remote software upgrades, system configurations, monitoring, and operation. As the number of VC240 systems grows in a deployment, a central management system can make administrators significantly more efficient at managing distributed VC240 systems from a single point.



RADVISION's iVIEW Suite is the perfect solution for this requirement. A comprehensive management solution is provided for collaborative video communication. With iVIEW, effectively manage and monitor a video net-

work to ensure the bandwidth is used efficiently. Also, easily schedule and manage meetings, delivering high-quality video communication.

Recording and Streaming a Conference

Enable conference recording through RADVISION's SCOPIA solution. The recording feature captures audio, video, and data-preserving meetings in high definition for playback. VCR-style controls provide access to any part of the recordings. RADVISION's SCOPIA additionally enables integrated streaming for conference webcasting to both PC-and Mac-based participants. This allows viewers to see the video streams of both the speaker and the presentation content. Simultaneous unicast and multicast support extend the meeting to a virtually unlimited number of participants.

Firewall Traversal and NAT Solution

Firewalls are barrier devices placed between two separate networks that filter out unwanted packets, in many cases unintentionally blocking video-conferencing traffic. Many firewalls also combine filtering functions with network address translation (NAT) capability; the firewalls are usually located at the border of the network they protect. SCOPIA PathFinder Firewall and NAT Solution enable secure connections between enterprise networks and remote sites. SCOPIA PathFinder maintains the security and advantages of firewalls and NAT over video networks and allows seamless integration with existing video endpoints and systems.

Learn More

To learn more on how RADVISION SCOPIA can help you set up your VC240, visit <http://www.radvision.com/VC240> or contact your regional RADVISION office.

USA/AMERICAS	EMEA	APAC
T. +1 201 689 6300	T. +44 20 3178 8685	T. +852 3472 4388
F. +1 201 689 6301	F. +44 20 3178 5717	F. +852 2801 4071
infoUSA@radvision.com	infoUK@radvision.com	infoUK@radvision.com

6 Custom Settings

Some menu options are disabled depending on the video mode, as shown below.

		VC mode	PC mode	DVI mode
General	Max. Power Saving	X	○	○
	Standby	○	X	X
Picture	Video Mode	○	X	X
	Color	○	X	X
	Tint (G/R)	○	X	X
	MagicBright	X	○	○
	Auto Adjustment	X	○	X
	Screen	X	○	X
	Picture Options			
	R-Gain	X	○	○
	G-Gain	X	○	○
	B-Gain	X	○	○
	Size	X	○	○
	Digital NR	○	X	X

6.1 Menu Language

Various menu languages are available. To change the menu language, press **SET UP** to open the Setup screen, and go to General and select a language from Language. The menu will be displayed in the selected language.



6.2 Picture

PC or DVI Mode

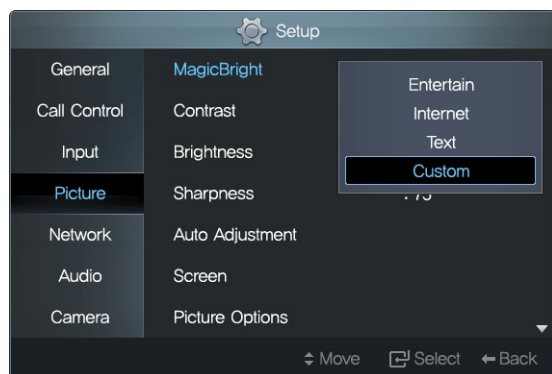
Adjusting the Brightness

You can adjust the brightness, following the steps below.

- 1 Press **SET UP** to open the Setup screen, and go to Picture.

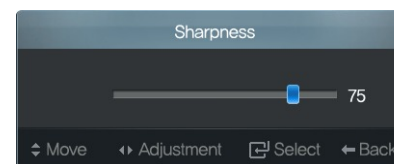
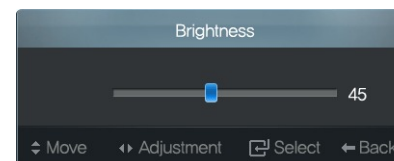
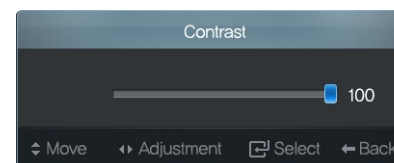


- 2 Select an option from MagicBright.



- 3 If the option you want is not available, select Custom, and then adjust

Contrast, Brightness and Sharpness.

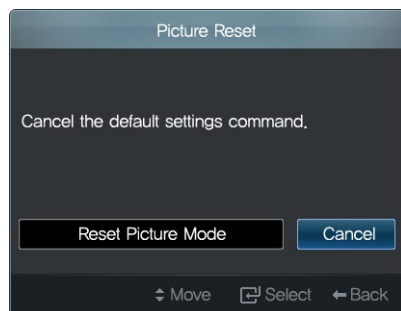


Preset MagicBright options are permanently defined. Custom settings will be applied to Custom.

- 4 To reset all Custom settings, select Picture Reset.



Then select Reset Picture Mode.



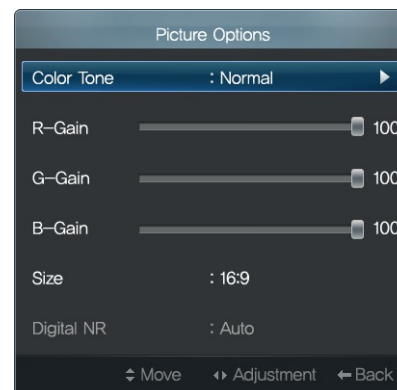
Adjusting the Color Tone

You can change the color tone:

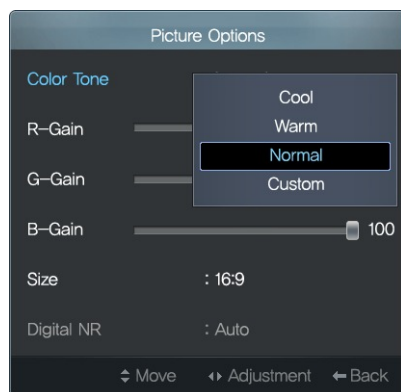
- 1 Press **SET UP** to open the Setup screen, and go to Picture.



- 2 Select Picture Options.



- 3 Select an option from Color Tone.



- 4 If the option you want is not available, select Custom, and then adjust R-Gain, G-Gain, and B-Gain, which indicate red, blue, and green respectively. To change the color tone of the picture to yellow, change R-Gain and G-Gain to 100 and B-Gain to 0.

Preset Color Tone options are permanently defined. Custom settings will be applied to Custom.

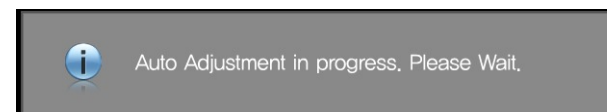
Picture Size and Location

You can change the picture size and location in PC mode:

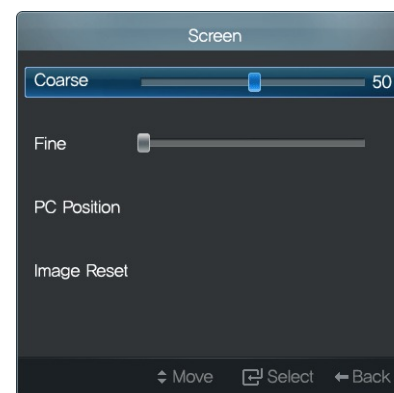
- 1 Press **SET UP** to open the Setup screen, and go to Picture.







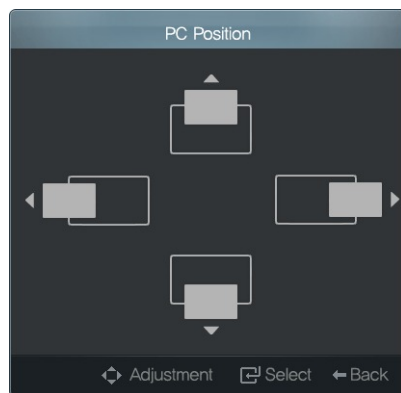
- 2 To automatically adjust the picture size and location in accordance with the received video signal, select Auto Adjustment.



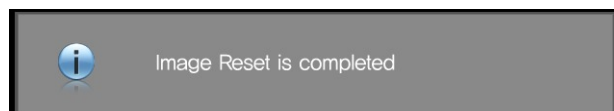
- 3 To manually adjust the picture size and location, select Screen.



- 4 Decrease or increase Coarse to narrow or widen the picture respectively. To finely adjust the picture width, select Fine.
- 5 If the picture is not centered on the screen, select PC Position and then adjust the picture location using the , , , or  button.



- 6 To reset the picture size and location, select Image Reset.



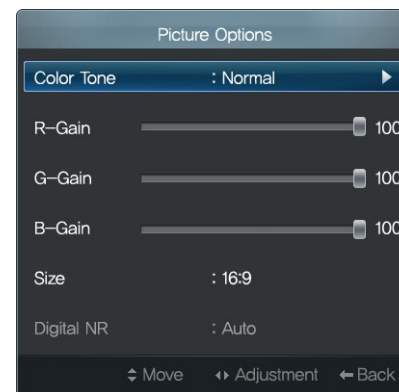
Aspect Ratio

You can change the aspect ratio in PC or DVI mode:

- 1 Press  to open the Setup screen, and go to Picture.

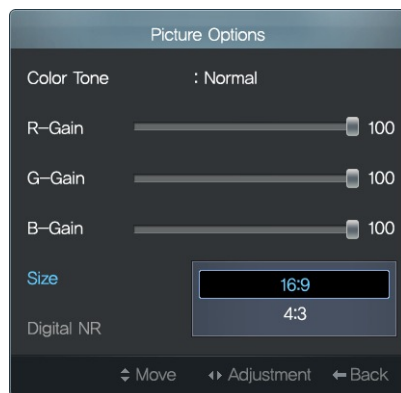


- 2 Select Picture Options.



- 3 Select 16:9 or 4:3 from Size. It is best to select 4:3 for documents or 16:9

for movies.



16:9



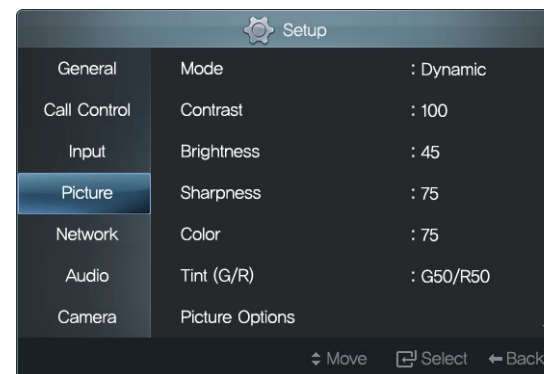
4:3

VC Mode

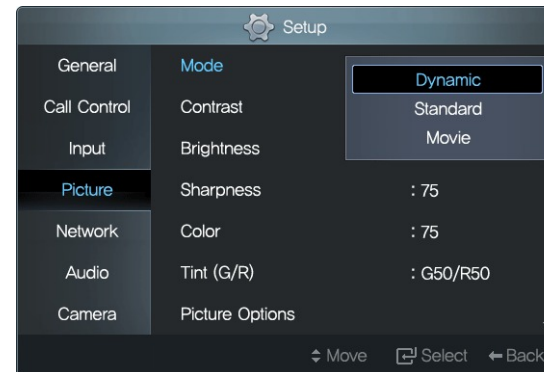
Adjusting the Brightness and Color Intensity

You can change the brightness and color intensity:

- 1 Press **SETUP** to open the Setup screen, and go to Picture.

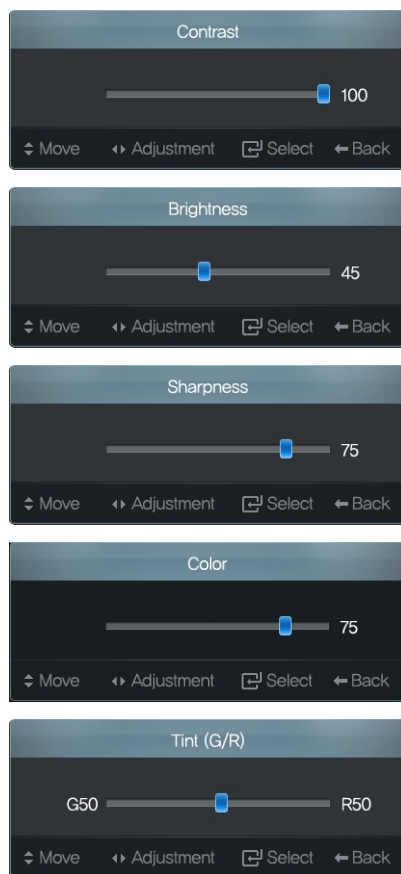


- 2 Select an option from Mode.

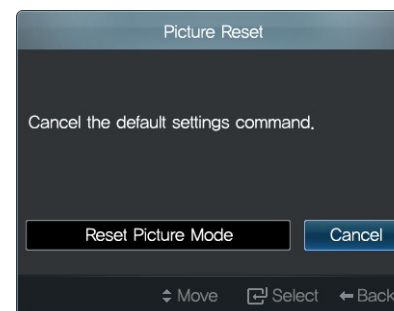


- 3 Adjust Contrast, Brightness, Sharpness, Color, and Tint (G/R) for the

selected option.



Then select Reset Picture Mode.



- 4 To reset the custom settings for the current Mode, select Picture Reset.

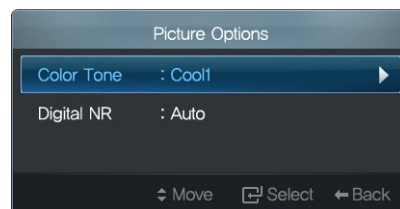
Adjusting the Color Tone

You can change the color tone:

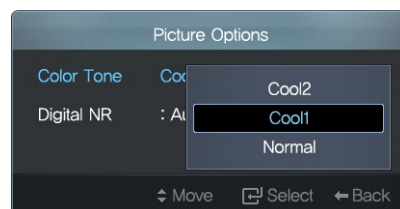
- 1 Press **SET UP** to open the Setup screen, and go to Picture.



- 2 Select Picture Options.

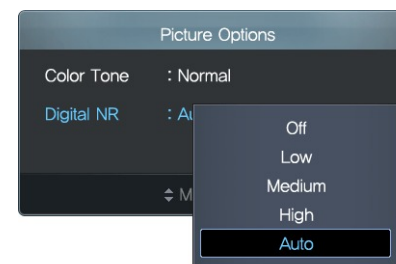


- 3 Set Color Tone to Cool1, Cool2, Normal, Warm1, or Warm2.



- 4 Noise can occur in the picture of a very dynamic video. To avoid noise,

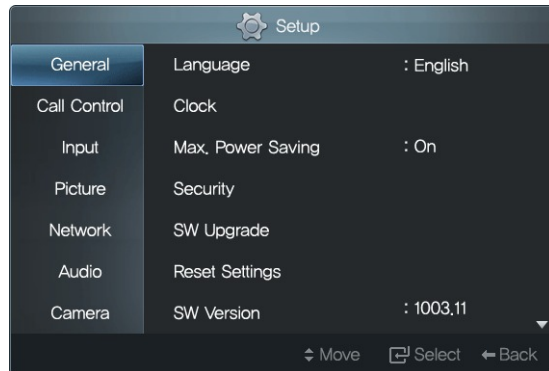
set Digital NR to Off, Low, Medium, High, or Auto.



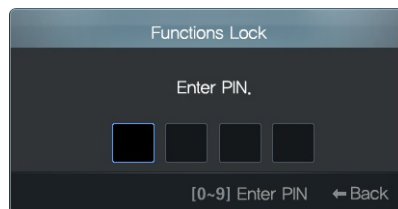
6.3 Security

You can set the monitor to be accessed only via a password.

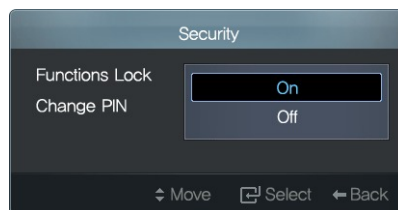
- 1 Press **SETUP** to open the Setup screen.



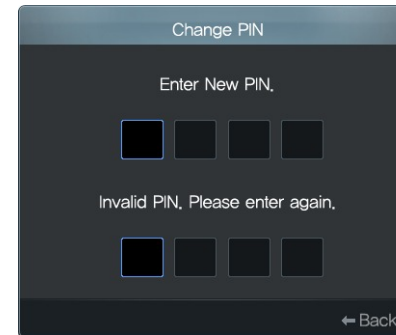
- 2 Select Security. Selecting Security will always display the following password prompt. Enter the current password. The initial password is 0000. This is working only from 1004.17.



- 3 Set Functions Lock to On.



- 4 Because the initial password of most devices with a security function is set to 0000, it is best to change the password. Enter a new password in the Change PIN field.

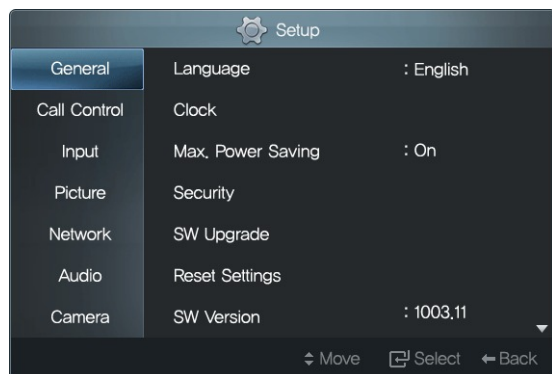


- 5 If you forget your password, perform Reset Settings. The password will be reset to 0000. Refer to the following section for details about Reset Settings.

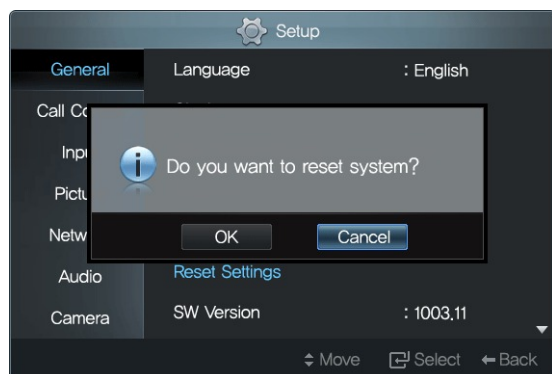
6.4 Reset Settings

You can return the monitor to its default settings:

- 1 Press **SETUP** to open the Setup screen.



- 2 Select Reset Settings.



The monitor will restart itself after resetting. Note that all user configurations and the call logs will also be deleted.

6.5 Software Update

You can update the monitor software over the network. This will allow you to use additional functions. System supports two ways of software upgrade: By pushing the software to the SCOPIA VC240 from iVIEW NMS server or an external Windows (XP, 7)-based PC using the upgrade utility. Downloading the software to the system GUI from an external local HTTP server. Please refer to upgrade document available from customer support for HTTP server setup.

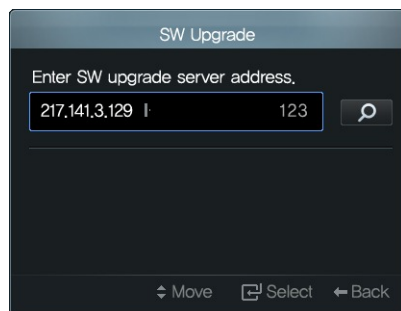
- 1 Press **SETUP** to open the Setup screen.




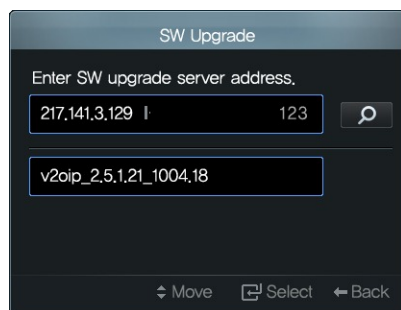
- 2 To view the monitor software version, select SW Version.



- 3 Select SW Upgrade to start an update.



- 4 Enter the IP address of the software-update server in the input field, and press . Contact our service center or Radvision for getting the updated released SW version. Upgrade server should be installed locally. A software will appear on the server after setup. Refer to Chapter 5 for details about Radvision.




- 5 Select the software for the product and start upgrade process.



A software update cannot be performed during a call.

7 Troubleshooting Guide

Check the following when there is a problem with the product.

- 1 If the status indicator is dark even when the monitor is powered on, ensure the power cord is tightly connected to the monitor and socket.
- 2 If the message Check signal cable is displayed, tightly connect the video cable to the monitor and PC.
- 3 If you remove and reconnect the video cable when Max. Power Saving is set to On, the monitor may power off before it is recognized by the PC. Be sure to change the setting to Off before the monitor is powered off.
- 4 If the picture is displayed in a single color, ensure the video cable is tightly connected to the monitor and PC.
- 5 If the picture from a desktop PC does not display normally after the graphics card has been replaced, check to see if the correct driver for the graphics card is installed. Then change the graphics card setting to the video signal mode (resolution) supported by the monitor, referring to Table 3.
- 6 If the monitor does not power on even after you pressed the  button, check that the power switch (POWER S/W) on the back of the monitor is turned on.

Service Center

Contact our service center for more information. (Please check the model name and serial number in advance.)

NORTH AMERICA

CANADA	800-SAMSUNG (726-7864)	http://www.samsung.com
MEXICO	800-SAMSUNG (726-7864)	http://www.samsung.com
USA	800-SAMSUNG (726-7864)	http://www.samsung.com

EUROPE

FRANCE	01 48 63 00 00	http://www.samsung.com
GERMANY	01805-SAMSUNG (726-7864)	http://www.samsung.com
ITALIA	800-SAMSUNG (726-7864)	http://www.samsung.com
SPAIN	902-1-SAMSUNG (726-7864)	http://www.samsung.com

ASIA

CHINA	400-810-5858	http://www.samsung.com
HONG KONG	3698-4698	http://www.samsung.com
JAPAN	0120-327-527	http://www.samsung.com/jp
KOREA	1588-3366	http://www.samsungsvc.co.kr
TAIWAN	0800-329-999	http://www.samsung.com

Index

- 4:3, [48](#)
- 12 Hours, [24](#)
- 16:9, [48](#)
- 18/07/2010, [24](#)
- 18:24, [24](#)
- 24 Hours, [24](#)
- 123, [14](#)
- A**
- ABC, [14](#)
- abc, [14](#)
- Accept, [28](#)
- Add Contact, [32](#)
- Add Group, [31](#)
- Address, [19](#)
- All, [32](#)
- Audio, [29](#)
- AUDIO IN, [10](#)
- Auto, [25](#), [51](#)
- Auto Adjustment, [44](#), [47](#)
- Auto Answer, [28](#)
- B**
- B-Gain, [44](#), [47](#)
- Brightness, [25](#), [45](#), [49](#)
- C**
- Call, [35](#), [38](#)
- Call Control, [21](#), [28](#), [40](#)
- Call History, [28](#), [36](#)
- Call Quality, [21](#)
- Call Type, [27](#)
- Camera, [25](#)
- Change PIN, [52](#)
- Check signal cable, [55](#)
- Clock, [23](#)
- Clock Mode, [23](#)
- Clock Set, [23](#)
- Coarse, [48](#)
- Color, [44](#), [49](#)
- Color Tone, [47](#), [51](#)
- Connected to, [27](#)
- Contrast, [45](#), [49](#)
- Cool1, [51](#)
- Cool2, [51](#)
- Custom, [45](#), [47](#)
- D**
- Date Format, [24](#)
- Daylight Savings, [23](#)
- DD, [24](#)
- DD/MM/YYYY, [24](#)
- Delete, [32](#), [34](#), [37](#), [38](#)
- Delete All, [34](#), [37](#)
- Digital NR, [44](#), [51](#)
- Display Name, [18](#), [20](#)
- DNS Server, [17](#)
- Do not Disturb, [29](#)
- DVI IN, [10](#)
- Dynamic, [17](#)
- E**
- Edit, [33](#)
- F**
- Fine, [48](#)
- Flip, [26](#)
- Functions Lock, [52](#)
- G**
- Gatekeeper, [19](#), [21](#)
- Gateway, [17](#)
- General, [44](#)
- G-Gain, [44](#), [47](#)
- Group, [31](#), [32](#)
- H**
- H.323, [19](#)
- H.323 Settings, [19](#), [21](#)
- H.460 Traversal, [19](#), [21](#)
- High, [30](#), [51](#)
- Horiz. + Verti., [26](#)
- I**
- Image Reset, [48](#)
- Input, [29](#)
- IP, [32](#)
- IP Address, [17](#)
- IP Assignment, [17](#)
- L**
- LAN, [11](#)
- Language, [44](#)
- Low, [30](#), [51](#)
- M**
- MagicBright, [44](#), [45](#)
- Manual, [25](#)
- Max Bandwidth, [21](#)
- Max. Power Saving, [15](#), [44](#), [55](#)
- Medium, [30](#), [51](#)
- MIC, [11](#)
- Missed, [36](#)
- MM, [24](#)
- Mode, [49](#), [50](#)
- Motion, [22](#)
- N**
- Name, [32](#)
- NAT Auto Discovery, [21](#)
- NAT Traversal, [20](#), [21](#)
- Network, [17](#), [19–21](#)
- Network Preference, [19](#), [20](#)
- Network Test, [17](#)
- Normal, [51](#)
- O**
- On + Mic Mute, [29](#)
- P**
- Password, [20](#)
- PC Position, [48](#)
- Phone Book, [28](#)
- Phone Number, [19](#), [32](#)
- Picture, [44–49](#), [51](#)
- Picture Options, [44](#), [46](#), [48](#), [51](#)
- Picture Reset, [45](#), [50](#)
- PIP Position, [30](#)
- PIP Size, [30](#)
- PIP Transparency, [30](#)
- PLC, [22](#)
- PM 06:24, [24](#)
- Ports Conflagrations, [21](#)
- Power Frequency, [25](#)
- POWER S/W, [55](#)
- Presentation Source, [40](#)

R

Received, [36](#)
Reject, [28](#)
Rename, [31](#)
Reset Picture Mode, [46](#), [50](#)
Reset Settings, [52](#), [53](#)
R-Gain, [44](#), [47](#)
RGB IN, [10](#)

S

Save, [39](#)
Screen, [44](#), [47](#)
Security, [52](#)
Sent, [36](#)
Server Address, [20](#)
Setup, [13](#)
Sharpness, [45](#), [49](#)
SIP, [20](#)
SIP Proxy Server, [20](#)
SIP Settings, [20](#)
Size, [44](#), [48](#)
Sounds, [29](#)
Speed & Duplex, [18](#)
Standby, [16](#), [44](#)
Static, [17](#)
Subnet Mask, [17](#)
SVC, [22](#)
SW Upgrade, [54](#)
SW Version, [53](#)

T

Time Format, [24](#)
Time Zone, [23](#)
Tint (G/R), [44](#), [49](#)

U

Unassigned, [32](#)
URI, [32](#)
User Name, [20](#)

V

VESA, [9](#)
Video Mode, [22](#), [44](#)
View, [33](#), [36](#)
Voice, [27](#)

W

Warm1, [51](#)
Warm2, [51](#)
White Balance, [25](#)

Y

YYYY, [24](#)

Free Manuals Download Website

<http://myh66.com>

<http://usermanuals.us>

<http://www.somanuals.com>

<http://www.4manuals.cc>

<http://www.manual-lib.com>

<http://www.404manual.com>

<http://www.luxmanual.com>

<http://aubethermostatmanual.com>

Golf course search by state

<http://golfingnear.com>

Email search by domain

<http://emailbydomain.com>

Auto manuals search

<http://auto.somanuals.com>

TV manuals search

<http://tv.somanuals.com>