



NEW FOUNDATIONS[®] COMPONENT 500 SERIES AV RACKS

Introducing new fully customizable AV rack solutions

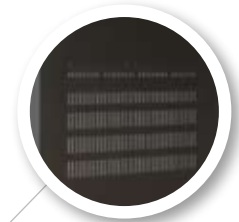
New Foundations Component 500 Series AV racks come open and ready to customize — simply add available accessories for a fully personalized solution. Designed with high performance and structural integrity in mind, 500 Series racks feature heavy-gauge welded steel construction, removable casters for easy access to the rear of the cabinet and adjustable-height feet for perfect leveling and stabilization. Vented side panels allow increased airflow to keep AV components cool, even in an enclosed cabinet.



CFR535-B1 vent detail shown



Completely customizable — add accessories to frame to suit any AV need



Vented side panels provide increased airflow to keep components cool



Heavy-gauge welded steel construction supports even the most complex AV gear arrangements



Includes adjustable feet to level and stabilize rack and swivel casters for easy access to rear of cabinet



www.sanus.com • 800.359.5520



NEW FOUNDATIONS[®] COMPONENT 500 SERIES AV RACKS

MODEL: CFR518-B1

DESCRIPTION

37.5" tall AV rack

SPECIFICATIONS

Overall height:

37.5"/864 mm

Overall width x depth:

22" x 28"/559 x 771 mm

Rack spaces:

18U

Weight capacity:

1000 lbs/453.6 kg

LIST PRICE

\$699.⁹⁹

- Heavy-gauge welded steel construction supports even the most complex AV gear arrangements
- Completely customizable — add accessories to frame to suit any AV need*
- Vented side panels provide increased airflow to keep components cool
- Includes adjustable feet to level and stabilize rack and swivel casters for easy access to rear of cabinet



CFR518-B1 shown

MODEL: CFR524-B1

DESCRIPTION

47.8" tall AV rack

SPECIFICATIONS

Overall height:

47.8"/864 mm

Overall width x depth:

22" x 28"/559 x 771 mm

Rack spaces:

24U

Weight capacity:

1000 lbs/453.6 kg

LIST PRICE

\$749.⁹⁹

- Heavy-gauge welded steel construction supports even the most complex AV gear arrangements
- Completely customizable — add accessories to frame to suit any AV need*
- Vented side panels provide increased airflow to keep components cool
- Includes adjustable feet to level and stabilize rack and swivel casters for easy access to rear of cabinet



CFR524-B1 shown

MODEL: CFR535-B1

DESCRIPTION

67.25" tall AV rack

SPECIFICATIONS

Overall height:

67.25"/864 mm

Overall width x depth:

22" x 28"/559 x 771 mm

Rack spaces:

35U

Weight capacity:

1000 lbs/453.6 kg

LIST PRICE

\$849.⁹⁹

- Heavy-gauge welded steel construction supports even the most complex AV gear arrangements
- Completely customizable — add accessories to frame to suit any AV need*
- Vented side panels provide increased airflow to keep components cool
- Includes adjustable feet to level and stabilize rack and swivel casters for easy access to rear of cabinet



CFR535-B1 shown

* Accessories sold separately



www.sanus.com • 800.359.5520

Download from Www.Somanuals.com. All Manuals Search And Download.

Free Manuals Download Website

<http://myh66.com>

<http://usermanuals.us>

<http://www.somanuals.com>

<http://www.4manuals.cc>

<http://www.manual-lib.com>

<http://www.404manual.com>

<http://www.luxmanual.com>

<http://aubethermostatmanual.com>

Golf course search by state

<http://golfingnear.com>

Email search by domain

<http://emailbydomain.com>

Auto manuals search

<http://auto.somanuals.com>

TV manuals search

<http://tv.somanuals.com>