

Split System Submittal Data

System: 26KS72R Indoor/Outdoor: KHS2672R/C2672R
Wall Mounted Air Conditioner

SANYO

Building Life.

Job Name: _____
 Location: _____
 Engineer: _____
 Submitted to: _____
 Submitted by: _____
 Reference: _____

Approval: _____
 Date: _____
 Construction: _____
 Unit #: _____
 Drawing #: _____



General Data (at 230V)

Power	V/PH/Hz	230/208/1/60
Circuit Ampacity	(A)	15-30 Indoor-Outdoor
Fuse Size, Max.	(A)	15-30 Indoor-Outdoor

Compressor		DC Rotary Inverter
No. used		1
R.L. Amps - L.R.	(A)	12.9-17.5

Outdoor Unit

Fan type		Propeller
Dia. (in.) - No. Speeds		18-7/64-1
Type Drive - No. Speeds		DC Motor
No. Poles	(RPM)	8 - 800
No. Motors	(W)	1 - 90
CFM	(High)	1765
F.L. Amps	(A)	13.8

Coil Type		Aluminum Fin & Copper Pipe
Fin Type - Pipe Type		Slit Plate - Inner Riffled
Rows - F.P.I.		1 - 15.9
Face Area	(sq.ft.)	7.26
Tube Size	(in.)	3/8"

Indoor Unit

Fan type		Cross Flow
Dia. & Length (in.) - No. Speeds		4-1/3 x L39-1
No. Speeds		3 & Auto
No. Poles	(RPM, High)	4 - 1224
No. Motors	(W)	1 - 29
CFM	(Hi/Med/Lo)	559/475/390
Indoor Sound Rating	(Hi) (dB-A)	48
F.L. Amps	(A)	0.31

Coil Type		Aluminum Plate Fin & Copper Tube
Fin Type - Pipe Type		Slit Plate - Inner Riffled
Rows - F.P.I.		2 - 24.1
Face Area	(sq.ft.)	2.57
Tube Size	(in.)	9/32"
Drain Connection Size	(in.)	1-1/4"

Refrigerant

	R410A
Lbs. - R410a (outdoor unit)	4.19
Control	Electric Expansion Valve
Connection	Flare
Line Length, Max (ft.)	165
Lift Difference, Max (ft.)	50 (outdoor lower), 100 (outdoor higher)
Line Size	(in. O.D. Discharge) 3/8"
Line Size	(in. O.D. Suction) 5/8"

Dimensions

	(in.)	H x W x D
Indoor Unit	(Uncrated) 12-63/64 x 44-7/8 x 8-31/32	
	(Crated) 15-11/32 x 47-27/32 x 11-17/32	
Outdoor Unit	(Uncrated) 30-23/32 x 37 x 13-3/8	
	(Crated) 34-31/32 x 39-31/32 x 16-3/32	

Weight

	Indoor	Outdoor
Net	(lbs.) 40	128
Shipping	(lbs.) 44	148
Shipping Volume	(cu.ft.) 4.9	13.0

Performance Data @ ARI Standard Conditions (230/208V)

Cooling

Total Capacity	(BTU/H)	25,200 (9,500-25,200)
Sensible Capacity	(BTU/H)	14,790
Latent Capacity	(BTU/H)	10,410
SEER		14.9
Dehumidification	(Pints/H)	8.1
Amps	(A)	15.3/16.9
Power Inputs	(W)	2,840/2,840
Outdoor Sound Rating	(dB-A)	49

➡➡➡ Dimensions

Features

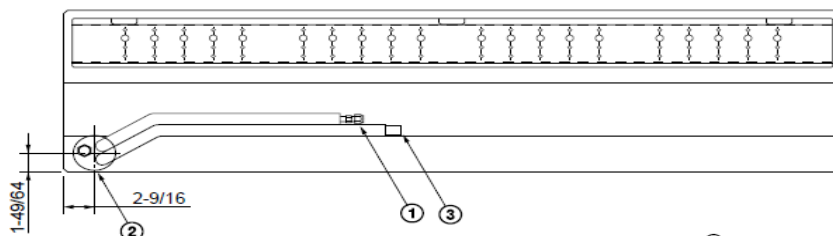
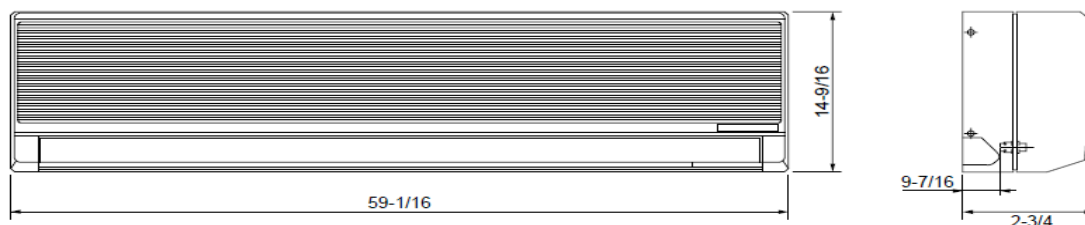
Controls	Microprocessor
Remote Controller	LCD Wireless Type, Temp. Sensor Built In
Temperature Control	IC Thermostat
Timer	24 Hr. Program
Night Setback	Built-In
Air Louver	(Horizontal) Manual
	(Vertical) Automatic
Power Failure Automatic Restart	Built-In
Self-Diagnosis	Built-In
Air Filter	Washable, Anti-Mold

Options

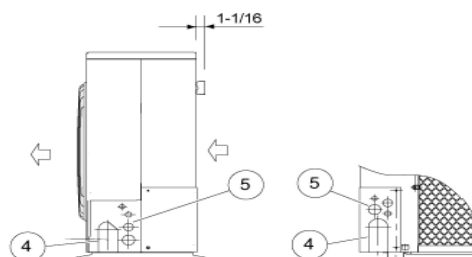
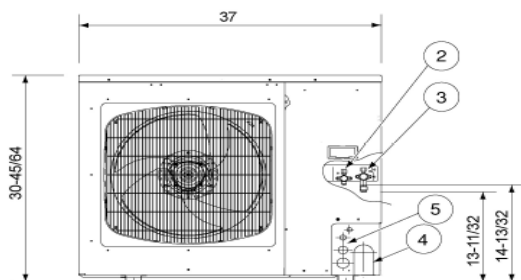
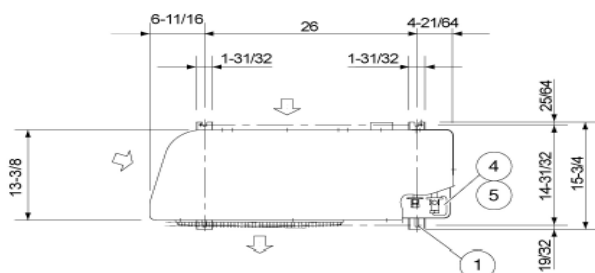
Refrigerant Line Set	Available
Fresh Air Intake	N/A
Air duct Extension	N/A
Indoor Frame Extension	N/A
Condensate Drain Pump	Available
Non-Removeable Remo-con Bracket	Available

Operating Range

	Indoor Air Intake Temp.	Outdoor Air Intake Temp.
Maximum	95F DB/71F WB	115F DB
Minimum	67F DB/57F WB	0F DB



- ① Refrigerant liquid line (3/8") Flare connection
- ② Refrigerant gas line (5/8") Flare connection
- ③ Drain hose OD 1-3/128



Dimension: inch

- | |
|--|
| ① Hole for anchor bolt (4-R6.5) / Anchor bolt: M10 |
| ② Refrigerant tube joint (liquid line tube) • Flare connection 3/8 in (9.52 mm) |
| ③ Refrigerant tube joint (gas line tube) • Flare connection 5/8 in (15.88 mm) |
| ④ Refrigerant tubing inlet (knock-out hole) |
| ⑤ Power supply inlet (knock-out hole $\phi 38$, $\phi 29$, $\phi 19$, $\phi 16$ mm) |

Download from www.Somanuals.com. All Manuals Search And Download.

SANYO

Sanyo Commercial Solutions
A Division of SANYO North America
1300 Michael Drive
Wood Dale, IL 60191 USA
www.sanyohvac.com



Free Manuals Download Website

<http://myh66.com>

<http://usermanuals.us>

<http://www.somanuals.com>

<http://www.4manuals.cc>

<http://www.manual-lib.com>

<http://www.404manual.com>

<http://www.luxmanual.com>

<http://aubethermostatmanual.com>

Golf course search by state

<http://golfingnear.com>

Email search by domain

<http://emailbydomain.com>

Auto manuals search

<http://auto.somanuals.com>

TV manuals search

<http://tv.somanuals.com>