

Split System Submittal Data



Building Life.

System: 26XW72R

Indoor/Outdoor: XHW2672R/C2672R

Grille: PNR-XH2442

Ceiling Recessed Air Conditioner

Job Name: _____
 Location: _____
 Engineer: _____
 Submitted to: _____
 Submitted by: _____
 Reference: _____

Approval: _____
 Date: _____
 Construction: _____
 Unit #: _____
 Drawing #: _____



General Data (at 230V)

Power	V/PH/Hz	230/208/1/60
Circuit Ampacity	(A)	15-30 Indoor-Outdoor
Fuse Size, Max.	(A)	15-30 Indoor-Outdoor

Compressor		DC Rotary Inverter
No. used		1
R.L. Amps - L.R.	(A)	12.9-17.5

Outdoor Unit

Fan type		Propeller
Dia. (in.) - No. Speeds		18-7/64-1
Type Drive - No. Speeds		DC Motor
No. Poles	(RPM)	8 - 800
No. Motors	(W)	1 - 90
CFM	(High)	1765
F.L. Amps	(A)	13.8

Coil Type		Aluminum Fin & Copper Pipe
Fin Type - Pipe Type		Slit Plate - Inner Rifled
Rows - F.P.I.		1 - 15.9
Face Area	(sq.ft.)	7.26
Tube Size	(in.)	3/8"

Indoor Unit

Fan type		Turbo
Dia. & Length (in.) - No. Speeds		17-7/16-1
No. Speeds		3 & Auto
No. Poles	(RPM, High)	6-464
No. Motors	(W)	1 - 40
CFM	(Hi/Med/Lo)	710/530/450
Indoor Sound Rating	(Hi) (dB-A)	38
F.L. Amps	(A)	0.7

Coil Type		Aluminum Plate Fin & Copper Tube
Fin Type - Pipe Type		Slit Plate - Inner Rifled
Rows - F.P.I.		2-14.9
Face Area	(sq.ft.)	3.69
Tube Size	(in.)	9/32"
Drain Connection Size	(in.)	1/4"

Refrigerant

Refrigerant		R410A
Lbs. - R410a (outdoor unit)		4.19
Control		Electric Expansion Valve
Connection		Flare
Line Length, Max (ft.)		165
Lift Difference, Max (ft.)		50 (outdoor lower), 100 (outdoor higher)
Line Size	(in. O.D. Discharge)	3/8"
Line Size	(in. O.D. Suction)	5/8"

Dimensions

	(in.)	H x W x D
Indoor Unit	(Uncrated)	13-5/16 x 33-55/64 x 33-55/64
	(Crated)	11-9/64 x 32-7/8 x 33-9/32
Outdoor Unit	(Uncrated)	30-23/32 x 37 x 3-3/8
	(Crated)	34-31/32 x 39-31/32 x 16-3/32

Weight

	Indoor	Outdoor
Net	(lbs.) 49	128
Shipping	(lbs.) 57	148

	Indoor	Outdoor
Shipping Volume	(cu.ft.) 7.1	13.0

Performance Data @ ARI Standard Conditions (230/208V)

Cooling

Total Capacity	(BTU/H)	24,800 (9,500-24,800)
Sensible Capacity	(BTU/H)	14,810
Latent Capacity	(BTU/H)	9,990
SEER		14.1
Dehumidification	(Pints/H)	8.1
Amps	(A)	15.6/17.3
Power Inputs	(W)	2,920/2,920
Outdoor Sound Rating	(dB-A)	49

➔➔➔ Dimensions

Features

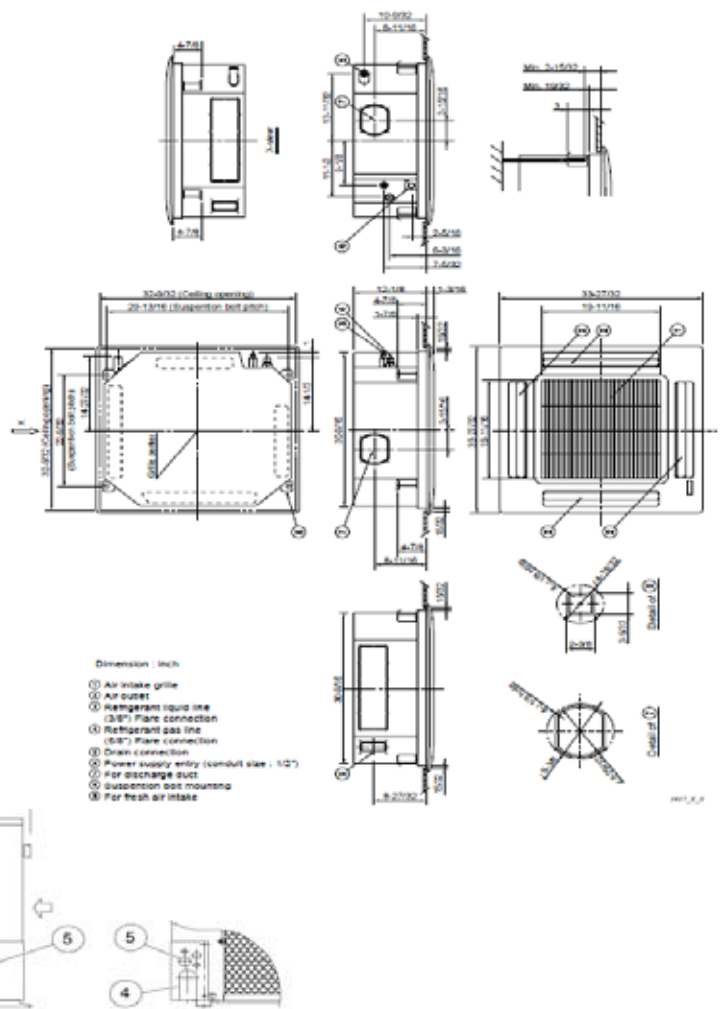
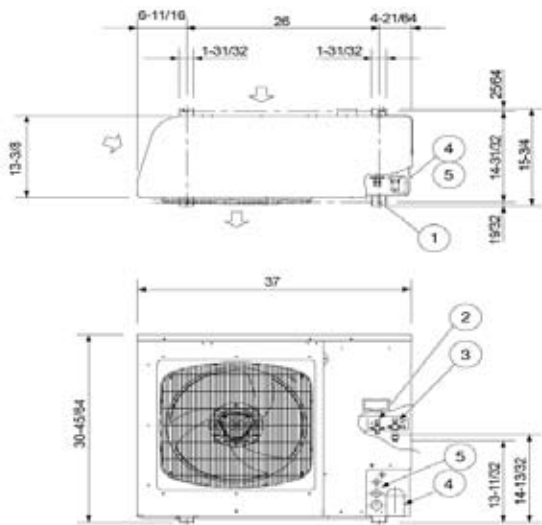
Controls	Microprocessor
Remote Controller	LCD Wired Type, Temp. Sensor Built In
Temperature Control	IC Thermostat
Timer	72 Hr ON/OFF
Night Setback	Built-In
Air Louver	(Horizontal) Manual
	(Vertical) Automatic
Power Failure Automatic Restart	Built-In
Self-Diagnosis	Built-In
Air Filter	Washable, Anti-Mold

Options

Refrigerant Line Set	Available
Fresh Air Intake	Available
Airduct Extension	Knock-out
Indoor Frame Extension	Available
Condensate Drain Pump	Standard
Wireless Remote Controller	Available
Non-Removeable Locking Remo-con Bracket	Available

Operating Range

Cooling	Maximum	Indoor Air Intake Temp. 95F DB/71F WB	Outdoor Air Intake Temp. 115 F DB
	Minimum	67F DB/57F WB	0F DB



Dimension: inch

- | | |
|---|---|
| 1 | Hole for anchor bolt (4-R6.5) / Anchor bolt: M10 |
| 2 | Refrigerant tube joint (liquid line tube) • Flare connection 3/8 in (9.52 mm) |
| 3 | Refrigerant tube joint (gas line tube) • Flare connection 5/8 in (15.88 mm) |
| 4 | Refrigerant tubing inlet (knock-out hole) |
| 5 | Power supply inlet (knock-out hole $\phi 38, \phi 29, \phi 19, \phi 16$ mm) |

Free Manuals Download Website

<http://myh66.com>

<http://usermanuals.us>

<http://www.somanuals.com>

<http://www.4manuals.cc>

<http://www.manual-lib.com>

<http://www.404manual.com>

<http://www.luxmanual.com>

<http://aubethermostatmanual.com>

Golf course search by state

<http://golfingnear.com>

Email search by domain

<http://emailbydomain.com>

Auto manuals search

<http://auto.somanuals.com>

TV manuals search

<http://tv.somanuals.com>