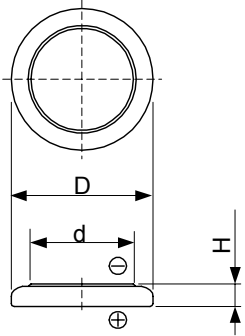


Cell Type ML1220 Specifications



Nominal Capacity ^{*1}		15mAh
Nominal Voltage		3V
Standard Charge/Discharge Current		0.1mA
Max. Discharge Current	Continuous ^{*2}	2mA
	Pulse ^{*3}	5mA
Charge/Discharge Cycle Characteristics	Discharging Depth of 5%	3000
	Discharging Depth of 20%	500
Charging Method	Constant Voltage Charge	3.1±0.15V
	High Temperature	2.95±0.15V
Temperature Range	-20°C~60°C	
Weight	0.8g	
Dimensions	Diameter(D)	12.5mm
	Height(H)	2.0mm
	d	9.6mm

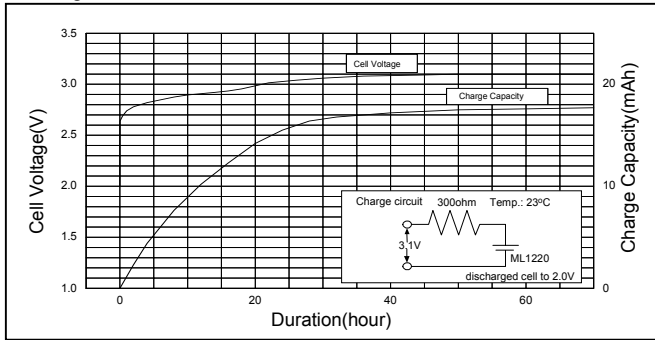
*1 Nominal capacity is determined to an end voltage of 2.0V when the battery is allowed to discharge at a standard current level at 23°C.

*2 Current value is determined so that 50% of the nominal capacity is obtained with an end voltage of 2.0V at 23 °C.

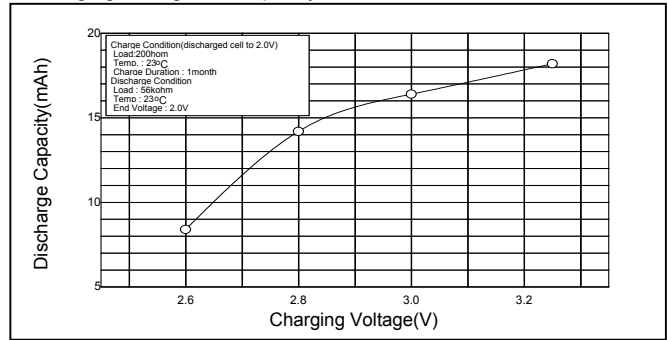
*3 Current value for obtaining 2.0V cell voltage when 15sec. pulse is applied at 50% discharge depth at 23 °C.

Typical Characteristics

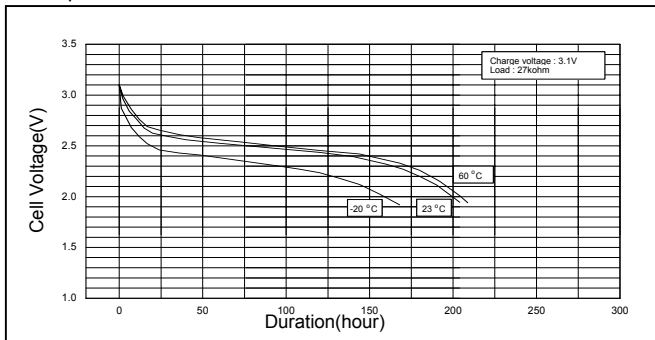
Charge Characteristics of ML1220



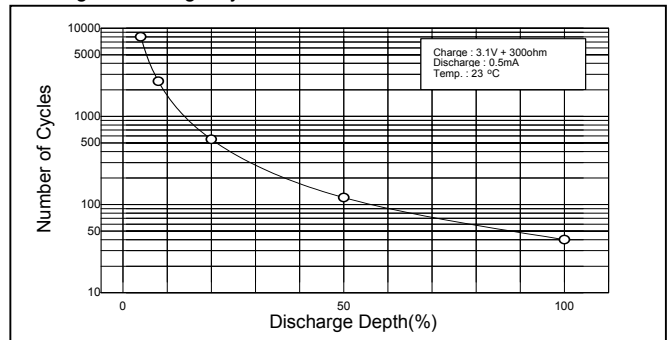
Charging Voltage vs. Capacity of ML1220



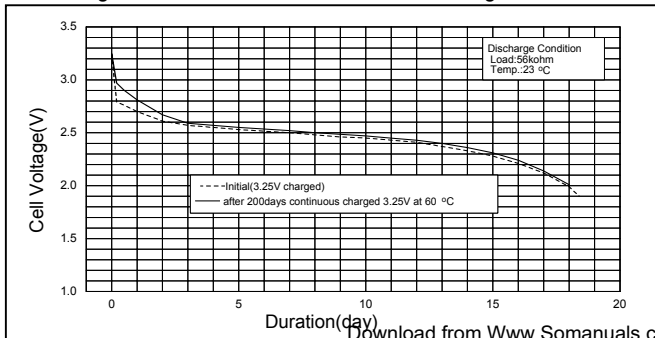
Temperature Characteristics of ML1220



Charge/ Discharge Cycle Characteristics of ML1220



Discharge Characteristics after Continuous Charge of ML1220



Free Manuals Download Website

<http://myh66.com>

<http://usermanuals.us>

<http://www.somanuals.com>

<http://www.4manuals.cc>

<http://www.manual-lib.com>

<http://www.404manual.com>

<http://www.luxmanual.com>

<http://aubethermostatmanual.com>

Golf course search by state

<http://golfingnear.com>

Email search by domain

<http://emailbydomain.com>

Auto manuals search

<http://auto.somanuals.com>

TV manuals search

<http://tv.somanuals.com>