

Introducing the  
**3" LCD**  
**Big Screen**

Digital Camera  
from SANYO



**VPC-E6U**  
**Digital Camera**

[www.sanyo.com](http://www.sanyo.com)

**SANYO**

# Large 3.0-inch LCD Monitor Ideal for Shooting, Seeing, & Showing

The 6-megapixel SANYO Xacti E6U digital camera features a full 3-inch color LCD screen that provides approximately 230% more viewing area than a 2-inch screen. The big screen is ideal for composing and framing the subject, checking the captured photo and sharing pictures with others. The bright, exceptionally viewable trans-reflective LCD screen incorporates a low-temperature polysilicon liquid crystal design known for its excellent color reproduction.

## 36-Image Display



▶ 36 IMAGE

Just like an index print of developed negatives, the 36-image display is invaluable for checking your images all on one screen, or for choosing which one to view full-screen. The 9-image display provides larger images show greater detail and is also conveniently accessible.



▶ 9 IMAGE



▶ SINGLE IMAGE

## Guidance Display



▶ OFF



▶ ON

By displaying the photographic subject within a 2-inch area, the handy on-screen guide can be displayed providing information about shooting conditions, making it easy for anyone to take good photos.

## Visual Scheduler



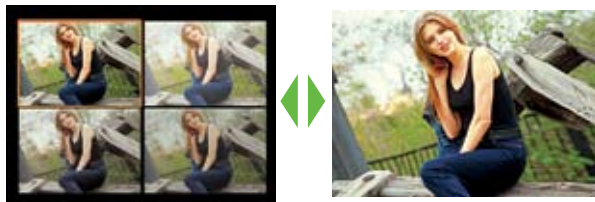
Enter photos pertinent to your appointments in the handy scheduler for an image-based calendar. This makes it easy to find the particular image you want.

## Zoom Jump View



Snap a picture, and it takes just two quick button presses to zoom in and check the focus accuracy. The magnification ratio is automatically set according to the resolution of each photographed image for smooth checking of the image.

## Best Shot Mode



This smart camera can determine the optimum shooting conditions (scene mode), and take 4 consecutive shots while slightly adjusting the exposures. All 4 shots are displayed on the screen. You can store all the images or just choose the best one to save and the rest are deleted. Because the camera adjusts all the settings automatically, it makes worrying about which mode is best a thing of the past and makes it easy for anyone to get beautiful photos.

## Various Shooting Mode

This function makes it easy to shoot beautiful pictures. Simply select the icon of the mode that matches the scene you are shooting.



### Monochrome Mode

Emphasizes light and shadow to achieve more atmospheric monochrome shots.



### Sepia Mode

Changes the color tone for that classic, nostalgic look.



### Fireworks Mode

Enables you to take beautiful pictures of fireworks.



### Landscape Mode

Takes beautiful shots of distant scenery.



### Night View Model

Lets you shoot a foreground subject against a nighttime background.



### ID Mode

Lets you take either of two different-sized ID photos (1.77 x 1.37 in or 1.57 x 1.18 in printed out on postcard-sized paper).



### Composite Mode

Opens up fun possibilities for placing inset pictures on other pictures.



### Portrait Mode

Gives your photographic subject more presence.



### Sports Mode

Allows you to capture a fast moving subject.



### Lamp Mode

Captures fine details under candlelight or lamp light.

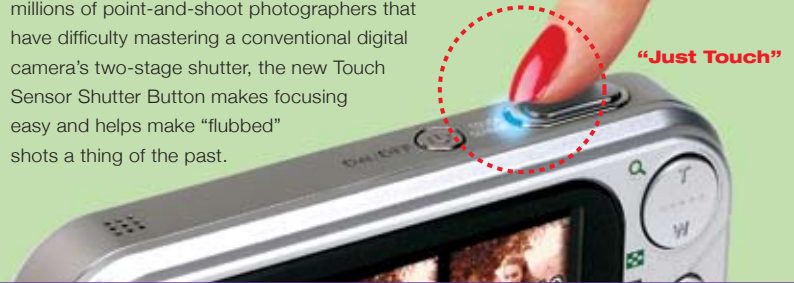


### Cosmetic Mode

Enhances the appearance of your subject's skin in close-up photos.

## “Touch Sensor Shutter Button” Touch and Focus!

The lightest finger touch activates the “Touch Sensor Shutter Button” which automatically locks the exposure and focus of your image. Then, a gentle press of the shutter button quickly captures the image. For novices and the millions of point-and-shoot photographers that have difficulty mastering a conventional digital camera's two-stage shutter, the new Touch Sensor Shutter Button makes focusing easy and helps make “flubbed” shots a thing of the past.



## Other Features

### 6.0 Megapixel

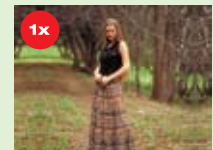
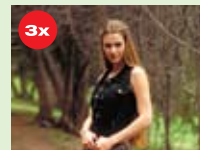
With its 6.37 Megapixel CCD (total), the SANYO Xacti E6U lets you take beautiful photos with vivid, true-to-life color and extraordinary details.

### Super Macro

Use the Xacti E6U's super macro for remarkable close-ups. You can shoot from within 0.39 inches of your subject.

### 12x Zooming

The Xacti E6U puts up to 12x zoom power at your fingertips, with its high quality Konica-Minolta high-performance optical 3x inner zoom lens and 4x digital zooms.



### Real-Time Interpolation for Superb Resolution

Our original algorithm uses three pixel-interpolation filters to convert the CCD's 6.0 effective megapixels to the recorded equivalent to 10.2 megapixels. As well as being able to print out a detailed image very clearly, even on 11x17 paper.

### Natural-Looking Video Clips

The Xacti E6U shoots video clips, VAG size (640 x 480) at 30 frames per second for natural-looking motion. The moving pictures are recorded in the QuickTime Movie (Photo-JPEG) format for easy editing.



### Sequential Shooting

The Xacti E6U can shoot a sequence of shots\* in only 2.5 fps with beautiful 6-megapixel resolution (\*6M/Normal mode).

### Nine-Point Area AF

With the newly developed 9-point range finder AF, in addition to the conventional 5-point (center, upper, lower, left, right) focus, an additional 4 points (lower left, upper left, lower right, upper right) for a total of 9 focus points and area focus are used to automatically determine the focus.

### PictBridge

Simply connect the Xacti E6U to a PictBridge compatible printer and you can print photographs without using a computer.



### Exif Print

Exif Print-compatibility lets you make prints that accurately reflect digital image file data that otherwise could be lost.



### USB 2.0 High-Speed

# Specification

Model Number	VPC-E6U	
Effective Pixel Count	Approx. 6.0 Megapixels	
CCD	1/2.5-inch, 6.37-megapixel CCD (total)	
Recording Media	SD Memory Card, MultiMedia Card, 16MB Internal Memory	
Recording File Formats	Still: JPEG (DCF <sup>1</sup> , Exif ver 2.2 <sup>2</sup> DPOF <sup>3</sup> Standard) Video: QuickTime Movie (MOV, Photo-JPEG Compression), Audio: WAV (mono)	
Resolution (Pixels)	Still	[10M] Mode: 3680 x 2760, [6M] Mode: 2816 x 2112, [4M] Mode: 2288 x 1712, [2M] Mode: 1600 x 1200, [0.3] Mode: 640 x 480
	Sequential	[6M] Mode: 2816 x 2112, [4M] Mode: 2288 x 1712, [2M] Mode: 1600 x 1200, [0.3M] Mode: 640 x 480
	Video	[640-H] Mode: 640 x 480 (30fps, Low-compression), [640-S] Mode: 640 x 480 (30fps, Standard-compression) [320-H] Mode: 320 x 240 (30fps), [320-S] Mode: 320 x 240 (15fps), [160] Mode: 160 x 120 (15fps)
Lens	6.3 to 18.9 mm (equivalent to 38-114 mm on 35 mm Camera), f: 3.3 - 4.0 , Optical 3.0x Inner Zoom lens, Auto Focus, 9 Groups 11 Lenses	
Photo Range	Standard: 7.9"(wide)/19.7" (tele) to Infinity, Macro: 0.39"(wide)/19.7" (tele) to 23.6"	
Shutter Speed	Still / Sequential: 1/2-1/2000 sec. (Flash: 1/30-1/2000 sec., Lamp/Landscape/Nightview/Fireworks mode: Max 2 sec.) Video: 1/30-1/10000 sec.	
Digital Zoom	Shooting: Max. 4x (Except Still Shots. [10M] Mode) Playback: Max. 57.5x ([10M] Mode, Depending on the Resolution)	
Focus	Auto (Still: 9-point AF/Spot AF/with Touch Sensor), Video (continuous Area AF), Manual (16 Steps)	
Filter Function	Standard/Cosmetics/ Monochrome/Sepia/Sharpness/Contrast/Color Saturation	
Shooting Mode	One image/Sequential/Schedule/Composite/ID Photo	
Photometry	Multi/Center-weighted/Spot	
Exposure Correction	Program AE, ±1.8 EV (in 0.3 EV steps)	
Sensitivity	Still / Sequential: Auto (ISO 50-200), Manual (ISO 50/100/200/400, Lamp Mode: Max. 1800) Video: Auto (ISO 450-1800), Manual (ISO 450/900/1800/3600)	
Self-Timer	2 or 10 sec.	
White Balance	Full Auto TTL, Manual: Sunny/Cloudy/Fluorescent/Incandescent/Sampling	
Flash	Auto/Forced/Off/Red-eye (Slow synchro mode possible in Nightview)	
LCD Monitor	3.0-inch, Low-Temperature Polysilicon TFT Color LCD Monitor, 230,000-pixel(approx.), (Coverage 100%, 7-step brightness control)	
Interface	AV Output (NTSC/PAL, Audio: Mono), USB 2.0 High-speed (Storage Class + Still Image class + PC Camera)	
Power Source	Lithium-ion Battery (DB-L20 Included), Charging AC Adapter (VAR-G8 Included)	
Approx. Battery Life <sup>4</sup>	Still: CIPA standard 170 images <sup>5</sup> Video: 85 min Playback: 210min <sup>6</sup>	
Dimensions	3.9" (W) x 2.3" (H) x 0.9" (D) (projections not included)	
Weight	Approx. 4.7 oz (main unit only) Approx. 5.4 oz (including battery and SD Card)	







\* Specifications are subject to change without prior notice.

Photo Capacities and Recoding Times				
Mode	Resolution	16 MB Internal Memory	SD Memory Card	
			128 MB	1 GB
Still Image	10 Mode	4 Images	37 Images	290 Images
	6M-H Mode	5 Images	42 Images	330 Images
	6M-S Mode	7 Images	64 Images	495 Images
	4M Mode	11 Images	96 Images	746 Images
	2M Mode	23 Images	191 Images	1470 Images
	0.3M Mode	119 Images	979 Images	7550 Images
Video Clip	640H Mode	10 sec.	1min. 26 sec.	11min. 7sec.
	640S Mode	14 sec.	1min. 58 sec.	15min. 12sec.
	320H Mode	23 sec.	3min. 15 sec.	25min. 11sec.
	320 Mode	1 min. 26sec.	11min. 55 sec.	1h. 32min.
	160 Mode	2min. 32sec.	20 min. 52 sec.	2h. 41min.
Voice Recording	-----	33 min.	4h. 31min.	34h. 58min.

- \* Number of shots is approximation only and may differ depending on the memory card type, its manufacturer, subjects and shooting conditions.
- \* Shooting time is approximation and continuous recording time for a single video clip may vary depending on the memory card type, capacity and performance.

Personal Computer Environment		
Operating System	PC/AT Compatible	Apple Macintosh®
	Windows®98 SE / Windows®Me Windows®2000/ Windows®XP	Mac OS 9.0 or later Mac OS X 10.1 or later
CPU PhotoExplorer	Pentium III 800MHz or faster	Power PC or faster
Motion Director	Pentium III 1 GHz or faster	-----
RAM Photo Explorer	Minimum 256MG	Minimum 64MB
Motion Director	Minimum 256MB	-----
USP Support	Windows®98 SE / Windows®Me Windows®2000 / Windows®XP with standard USB port	Mac OS 9.0, 9.1, 9.2 Mac OS X 10.1 or later, installed models with standard USB port

- \* Windows is a registered trademark of Microsoft Corporation.
  - \* Macintosh and QuickTime are trademarks or registered trademarks of Apple Computer Inc.
  - \* Ulead, Ulead PhotoExplorer are trademarks or registered trademarks of Ulead Systems, Inc.
- All trademarks mentioned are the properties of their respective partners

Included Accessories:					
					
■ CD-ROM (Sanyo Software Pack 8.2)	■ AC Adapter (VAR-G8) 3.4V, 100-240V (Standby Power 1W)	■ Dedicated USB Connection Cable	■ AV Connection Cable	■ Lithium-ion Battery (DB-L20)	■ Hand Strap

<sup>1</sup> DCF is abbreviation for "Design rule for Camera File system" - the industry standard established by the Japan Engineering Information Technology / Association (JEITA) with the aim of realizing a common format for image files used with digital still cameras and other related equipment to make those products more convenient for end users.  
<sup>2</sup> Exif ver 2.2 is an industry standard established for the file formatting of images from digital cameras.  
<sup>3</sup> The DPOF (Digital Print Order Format) is a standard industry format form recording designated information on the storage media, information such as the frames and number of copies designed for printing from the images taken on the digital camera.  
<sup>4</sup> Results may vary according to operating conditions.  
<sup>5</sup> CIPA (Camera & Imaging Products Association) standard.  
<sup>6</sup> Battery life based on the following conditions, SD memory card used; unit operated at room temperature.

SANYO Fisher Company  
21605 Plummer St. Chatsworth, CA 91311 / Phone: (818) 998-7322  
[www.sanyo.com](http://www.sanyo.com)

©2005 SANYO Fisher Company. All rights reserved. All rights reserved. Trademarks and logos are copyrights of their respective owners. Because its products are subject to continuous improvements, SANYO reserves the right to modify product design, features, and specifications without notice. Screen and photo images are simulated and do not represent actual quality.



## Free Manuals Download Website

<http://myh66.com>

<http://usermanuals.us>

<http://www.somanuals.com>

<http://www.4manuals.cc>

<http://www.manual-lib.com>

<http://www.404manual.com>

<http://www.luxmanual.com>

<http://aubethermostatmanual.com>

Golf course search by state

<http://golfingnear.com>

Email search by domain

<http://emailbydomain.com>

Auto manuals search

<http://auto.somanuals.com>

TV manuals search

<http://tv.somanuals.com>