

Digital Memory Player

DMP-M600

DMP-M700

Version 1.01

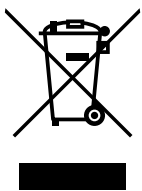
Instruction Manual

Contents

Accessories	2
Precautions	3
Controls	4
Recommended PC environment	4
How to connect the player to your PC	5
How to install the MusicFileMaster software	6
How to open the instruction manual	7
Disconnecting the player from your PC	8
How to check whether the player has recognised correctly or not	8
Removable Disk display	9
Starting up the MusicFileMaster	10
Transferring data by MusicFileMaster	11
Copying data by using Explorer	11
Transferring data using the Media Player	12
Designating the playback order (Playlist)	12
Formatting the player's data	12
Before operation	13
Playback	14
Examples of playback mode selection display	16
Recording voice	17
Listening to the FM radio	18
Erasing	19
Menu setting	20
Troubleshooting guide	22
Cleaning the cabinet	23
Specifications	23

Accessories

USB cable
Headphones
Strap



Your SANYO product is designed and manufactured with high quality materials and components which can be recycled and reused.


This symbol means that electrical and electronic equipment, at their end-of-life, should be disposed of separately from your household waste.

Please dispose of this equipment at your local community waste collection/recycling centre.

In the European Union there are separate collection systems for used electrical and electronic products.

Please help us to conserve the environment we live in!

Precautions

- The apparatus shall not be exposed to dripping or splashing.
- Do not drop the player or subject it to strong shocks.
- Do not use where there are extremes of temperature (below 5°C or exceeding 35°C).
- IBM and PC/AT are registered trademarks of International Business Machines Corporation.
- Microsoft, Windows Media™, and the Windows® Logo are trademarks or registered trademarks of Microsoft Corporation in the United States and/or other countries.
- Windows Media™ Player is trademark or registered trademark of Microsoft Corporation. 
- Adobe (Acrobat) Reader is a registered trademark of Adobe Systems Incorporated.
- Other system and product names generally are the registered trademarks or trademarks of the respective development manufacturers. The symbols ™ and ® are not shown in this manual.
- High volume levels can create potentially dangerous situations by drowning out surrounding sounds. Use caution when driving while operating the player, and obey all applicable laws.
Do not play your headphones at a high volume level. Hearing experts advise against continuous extended play.
If you experience a ringing in your ears, reduce the volume or discontinue use.
- This player contains an internal Lithium Ion Battery. The battery or the player should not be disposed of in a fire.
The battery or the player should not be thrown in the trash.
The battery or the player may require recycling in accordance with local laws. Contact your local regulatory authorities for more information.
- This battery is an articles of consumption. As it is charged and used, the amount of time it lasts will eventually get shorter and shorter. Consult your dealer when replacing the battery.

- SANYO takes no responsibility for data loss due to power cuts or damage to the player.
- To avoid potential risk of data loss caused by accidental operation or malfunction of the player, we recommend that you save a backup copy of your data on a PC, etc.
- Recording copyright material without permission of the copyright owners is usually an infringement. If you wish to re-record copyright material, permission from the copyright owner is necessary. SANYO does not approve of, and cannot be held responsible for, any unlawful use of this machine.

Note:

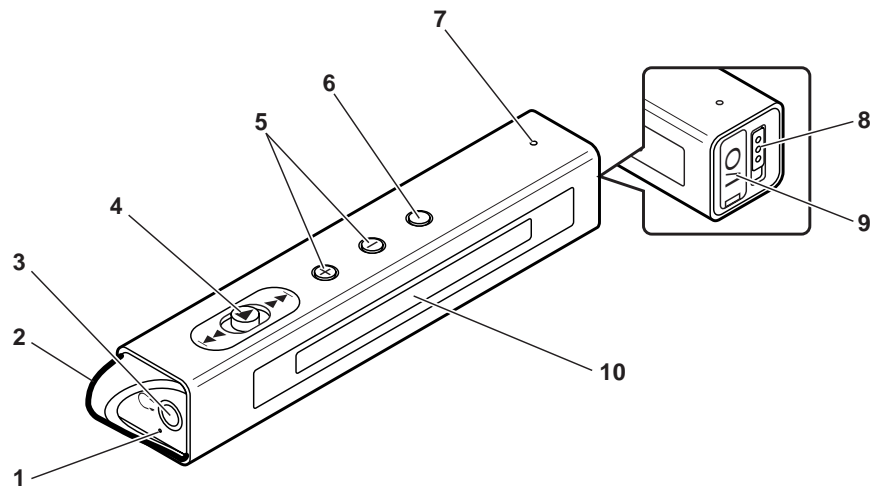
This handling description is created prior to product development.

When a part of the product specification must be changed to improve operability or other functions, priority is given to the product specification itself. In such instances, the instruction manual may not entirely match all the functions of the actual product.

Therefore, the actual product and packaging, as well as the name and illustration, may differ from the manual.

The screen/LCD display shown as an example in this manual may be different from the actual screen/LCD display.

Controls



- | | |
|--|----------------------------|
| 1. Built-in microphone | 6. Mode/Menu button (MODE) |
| 2. Necklace connection hole | 7. Reset switch (RESET) |
| 3. Headphones socket (🎧) | 8. Hold switch (◀ HOLD) |
| 4. Power, Play/Stop, Skip/Search, Select/Set button
(◀◀, ▶▶, ▶▶▶ POWER) | 9. USB terminal |
| 5. Volume buttons (+ VOL -) | 10. LCD display |

Recommended PC environment

Supported PCs

IBM PC/AT compatible

Supported OS

Windows XP Professional
Windows XP Home Edition
Windows 2000 Professional
Windows Millennium Edition(Me)
Windows 98 Second Edition

USB port

One required for connection

Sound board

16-bit Windows-compatible sound board supported

Other

Speakers or headphones required

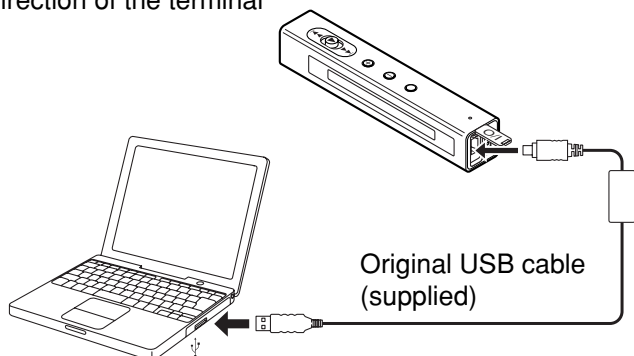
Note:

- Operation is not guaranteed for Macintosh PCs.
- Operation is not guaranteed for the following environments.
 - Upgraded Windows environments
 - Windows 95, 98, NT
 - Dual-boot Windows environments
- Standby, suspend, and other modes may not work properly with your particular environment. If this is the case, do not use those modes.

If you are using Windows 98SE, you need to install the USB driver.

How to connect the player to your PC

Pay attention to the direction of the terminal





Note:

- Do not use an USB hub or USB extension cable (Operation is not guaranteed). Use only the supplied USB cable for connection.
- When you connect the player to the PC for the first time, it sometimes may not be recognised as a Removable Disk. In this case, disconnect the player and reconnect it again.

1. Turn on your PC and Windows is started.
2. Connect the player to the PC with the USB cable.

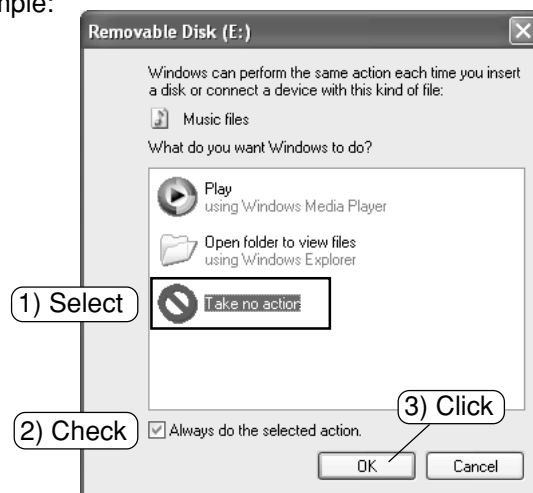
When the player is connected to the PC, it automatically enters to the battery charging mode.

“” is displayed on the display while charging. When the charge is completed, “” appears.

- Fully charge the battery before using the player for the first time.
- The battery is fully charged approximately 2 hours.

Selecting the action Windows is to take (Windows XP only)

After connection, the following screen will appear. Example:



Adjust your settings to match your PC's environment. In this manual, [Take no action] is selected, [Always do the selected action] is checked, and [OK] is clicked. This completes the connection to the PC.

- For Windows 98SE/Me/2000, this operation is not needed.

When connected to the PC, the player display will be as shown below and none of the operating buttons will work.

Connected to PC



Transmitting to/from PC



Moving

Before disconnecting the player from the PC, be sure to follow the steps on page 8. Do not disconnect during data transfer.

How to install the MusicFileMaster software

- Reproduction of this software is forbidden.
- This software shall not be copied and reprinted.
- SANYO shall not be liable for any damages arising out of the use of this software.
- The screen shots are of Windows XP.
- The screens displayed on your PC may not exactly correspond to those shown in this manual depending on the OS version and manufacturer.

Connect the player to your PC (refer to page 5).

To start up Explorer

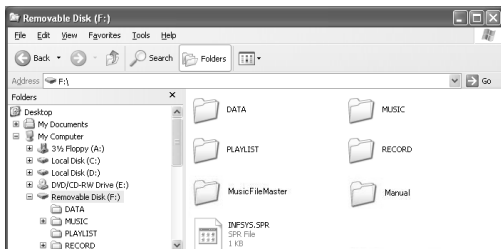
1. Click [start], then right-click [My Computer], and select [Explore] from the menu that appears.



Explorer will start up.

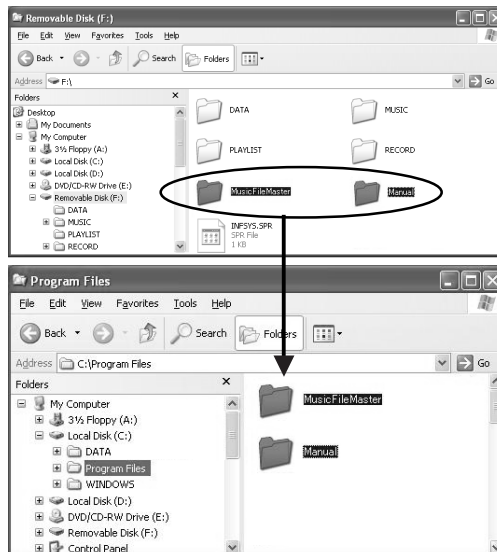
2. [Removable Disk (F:)] icon will appear in My Computer in Windows.

“F” (drive letter) is replaced by your drive letter.



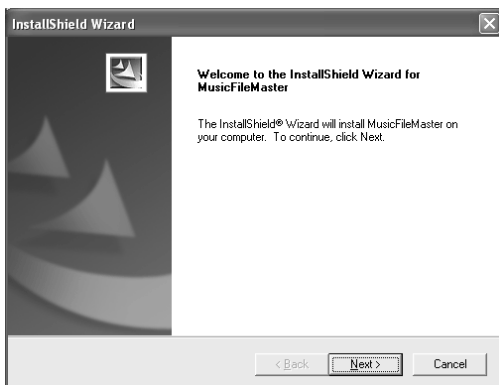
Copying [MusicFileMaster] and [Manual] folders to your PC for backup

Click [Removable Disk (F:)]. Select [MusicFileMaster] and [Manual] folders, and drag and drop them into a folder of your choice on your PC.



Installing the MusicFileMaster software

1. In the step 2 on the previous page, click [Removable Disk (F:)] > [MusicFileMaster] folder.
2. Double click [Setup.exe] in [MusicFileMaster] folder. [InstallShield Wizard] screen appears.



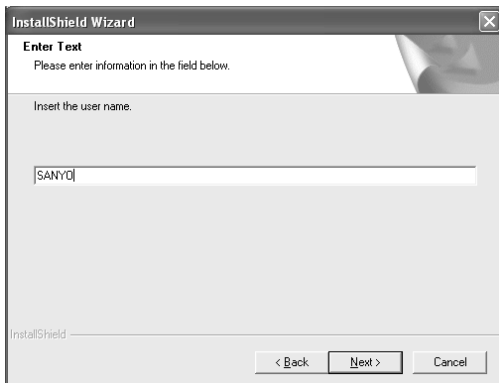
Click [Next].

3. Check "License Agreement" then click [Yes].



MusicFileMaster is not installed if you do not agree to the license agreement.

4. Enter the user name then click [Next].

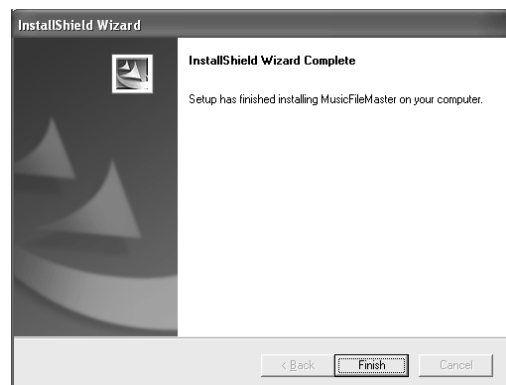


5. Select a folder where setup will install the files. Check "Destination Folder" then click [Next].



To install to a different folder, click [Browse...] and select another folder.

6. After the setup has finished installing MusicFileMaster software, click [Finish].



[MusicFileMaster] and [SANYO HDP DMP support] icons appear on the desktop.

Also Manual folder is installed to "C:\Program Files\SANYO\Manual" (in this example) when the installation of MusicFileMaster is performed.

Note:

Do not delete, move, or modify the installed folders/files.

[SANYO HDP DMP support]: For downloading the USB driver or the latest software, etc. from our web site.
<http://www.sanyo-audio.com/english/index.html>

How to open the instruction manual

1. In the step 2 on the previous page, click [Removable Disk (F:)] > [Manual] folder.

or

Open the [Manual] folder below:

C:\Program Files\SANYO\Manual (in this example)

2. Double click the desired file (Example: [Instruction Manual English.pdf]).

Adobe (Acrobat) Reader is necessary to view the PDF file. If you have not the Adobe Reader installed, see <http://www.adobe.com/products/acrobat/readermain.html> to download the Adobe Reader.

Disconnecting the player from your PC

Before disconnecting, make sure no data is being transferred.

For Windows 98SE: Disconnect the player from your PC.

For Windows XP/2000/Me:

1. Right-click the Task tray icon at the bottom right of the Windows screen.



If the icon is not displayed, refer to the Windows help.

2. Click [Safely Remove Hardware] displayed.



3. Select [USB Mass Storage Device] and click [Stop].



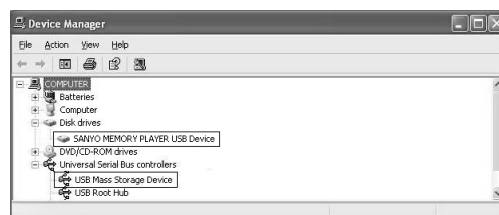
4. Check that [SANYO MEMORY PLAYER USB Device] is in the list, select [USB Mass Storage Device] and click [OK].



5. Disconnect the player from your PC.

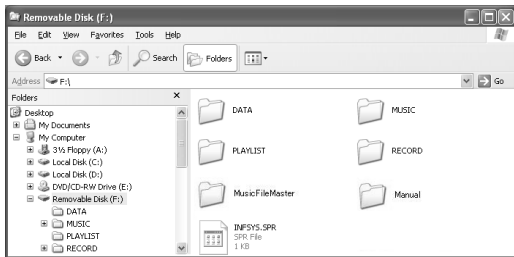
How to check whether the player has recognised correctly or not

1. Connect the player to your PC (refer to page 5).
2. [start] menu > right-click [My Computer] > select [Properties] to open [System Properties] > click [Device Manager] in [Hardware] tab to open [Device Manager].
3. Double click [Disk drives] > double click [Universal Serial Bus controllers]. If the following screen is displayed, it means the player has recognised correctly.



Removable Disk display

An icon [Removable Disk] will appear in My Computer in Windows when the player is connected to your PC.



[MUSIC] folder

Files transferred from your PC are stored in this folder.

- There is no set format for file names for files which are transferred, but they must be MP3 or WMA files.
- The playback order will change if the files in MUSIC folder are added. Also the same is said of the case of the directly created folder in the MUSIC folder.
- You can create a folder in the MUSIC folder and move files to that folder.
Files in subfolders up to two levels below the MUSIC folder can be played.
- The player can recognise up to 999 files in the MUSIC folder.

[RECORD] - [VOICE]/[FM] folder

Files recorded using the player are stored here.

- Files recorded from the microphone are stored in the VOICE folder with the name "IC_V_XXX (file number).MP3".
- Files recorded from the FM are stored in the FM folder with the name "IC_R_XXX (file number).MP3".
- The VOICE and FM folders can hold up to 255 files each.
- Only those files in the VOICE and FM folder which comply with the file name rules set can be played.
Also, keep in mind that changing a file's name will prevent that file from being played on the player.

[DATA] folder

This folder stores data files (Excel, Word, etc.) as a Removable Disk.

[PLAYLIST] folder

This folder stores playlist files.

- The player can recognise up to 999 files in the PLAYLIST folder.

[MusicFileMaster] folder

This folder is for installing MusicFileMaster.

[Manual] folder

This folder stores instruction manual files.

[USERPSET.ICR]

This file stores FM user preset information.

[INFSYS.SPR]

Hidden file containing the player information reads by the PC application. Do not delete.

Starting up the MusicFileMaster

MusicFileMaster

You can select music files on your hard disk and manage them using MusicFileMaster, by reading them into the application. MusicFileMaster enables you to transfer music files to your portable device, and manage the transferred music files.

MusicFileMaster has two modes.

Library mode: In this mode you can play and manage music files and create playlists.

Portable device mode: In this mode, you can transfer music files to your portable device, manage them, and play music files which are on your portable device.

Starting up the MusicFileMaster

Connect the player to your PC (refer to page 5).

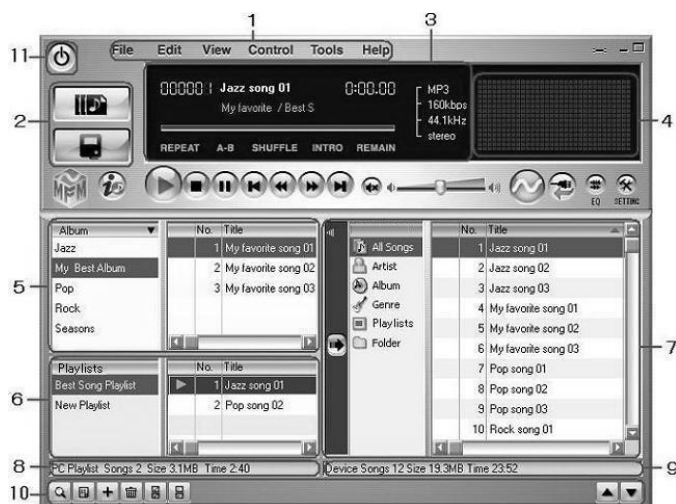
Double click [MusicFileMaster] icon created on the desktop to start up the MusicFileMaster.

Note:

It is recommended to end all Windows applications before start-up.

Controls in the MusicFileMaster window

For details, please refer to the on-line help.



1. Menu bar

Menus for operations are displayed.

2. Mode selection buttons

3. Music file information

4. Spectrum analyser

5. Library

Music file list in your PC is displayed.

The list is displayed in [Library] mode. [All Songs], [Artist/Album], [Album], [Genre] and [Format] can be displayed individually.

6. Playlist

Playlists in your PC are displayed.

7. Library in portable device

List of music information in portable device is displayed.

8. Music information in your PC

9. Music information in device

10. List control buttons

11. End button

This button is used to end the MusicFileMaster.

How to use on-line help

Start up the MusicFileMaster and select the [Table of Contents] in the [Help] menu. Refer to detailed information on the menu.



Transferring data by MusicFileMaster

Start up the MusicFileMaster (refer to page 10).

Transferring data to the player

After selecting [Help] menu > [Table of Contents], click [Basic operations] > [Transferring music files to portable device] of the [Portable device]. Then, transfer files according to the instruction displayed on the screen.

Storing data in your PC

Use [Backup Record Folder...] function in MusicFileMaster's [Tools] menu. Then, store files according to the instruction displayed on the screen.

Note:

- Registration of too many pieces of music may make the player action slower.
The player may not work depending on the environment of your PC.
- Only the files of MP3 and WMA (without copyright) formats can be transferred to the device and played back by MusicFileMaster. However, a file which has the extension of RMP (Riff MP3) can not be played back. All files of MP3 and WMA formats including variable bit rate can be transferred, but may not be played back correctly.

Copying data by using Explorer

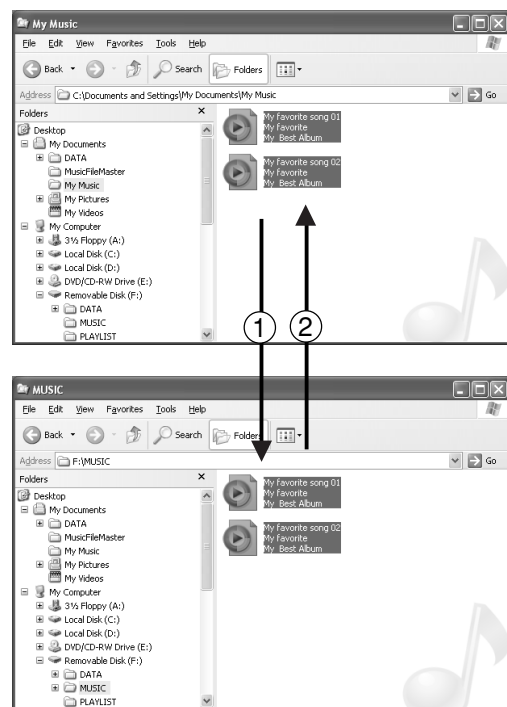
Start up Explorer (refer to page 6).

(1) Copying files to the player

Select the music files to copy and drag and drop them to [MUSIC] folder in [Removable Disk].

(2) Copying files to your PC

Select the music files you wish to copy inside [MUSIC] folder in [Removable Disk] and drag and drop them into a folder of your choice on your PC.



Note:

- Place files you wish to play either in the MUSIC folder or any subfolders two levels below the MUSIC folder.
- Some MP3/WMA files may not be able to be played on this player.
- Any MP3 or WMA files that you transfer and that are not for your own personal enjoyment may not be used without permission from the copyright holder, as stipulated by intellectual copyright law.
- You can search for music files transferred using Explorer or Windows Media Player. Use [Remake Management File of Device] function in MusicFileMaster's [Tools] menu.

Transferring data using the Media Player

If you have the Microsoft Windows Media Player installed, you can transfer WMA files to the player and listen to them. See the Windows Media Player on-line help for details on how to do this.

Note:

- Never disconnect the player from your PC during transfer.
- Files in subfolders up to two levels below the MUSIC folder can be transferred.

Precaution when copying WMA files to the player:

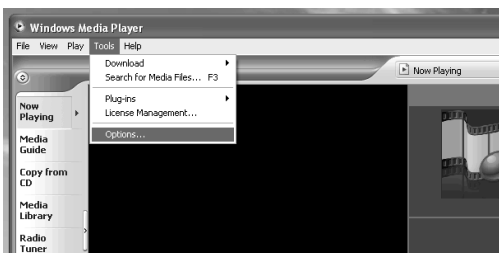
Transfer from your PC to the player and/or playback are impossible in the following cases.

- Music files which are copyright protected
- Music files purchased over the Internet may not transfer and/or play back.

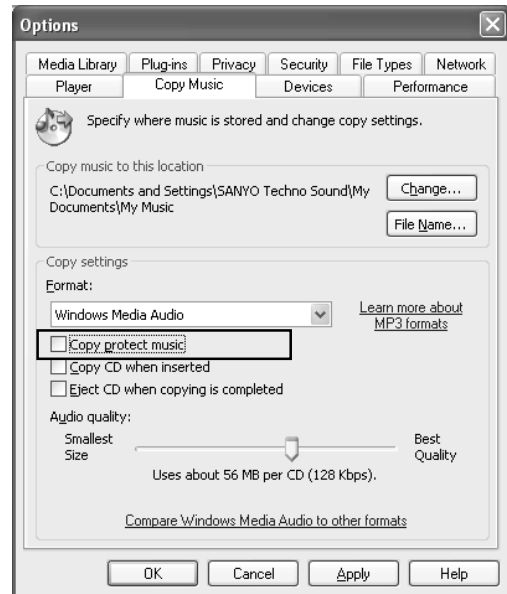
Note when ripping a CD (transferring CD music files to your PC as WMA files)

Be sure to remove the copyright protection as described below before ripping a CD using Windows Media Player.

1. Start up Windows Media Player.
2. Select [Tools] > [Options].



3. Open [Copy Music] or [Rip Music] in tab. Make sure that [Copy protect music] is not checked.



4. Click [Apply] then [OK].

Designating the playback order (Playlist)

It is possible to designate the playback order of music. Create a playlist on your PC and transfer it to the player to play your music in that order.

It is also possible to transfer two or more playlists to the player.

1. Start up the MusicFileMaster (refer to page 10).
2. After selecting [Table of Contents] in [Help] menu, click [Basic operations] > [Creating / deleting portable device playlists] of [Portable device]. Then, store the data according to the instruction displayed on the screen.

Formatting the player's data

Always format data using the player itself (refer to page 19).


Note:

- If you select the format function from the menu, the memory will be initialised and all files will be erased. Use only when you need it. Save a backup copy of your data on a PC, etc.

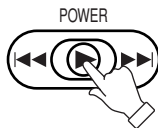
- The player might not operate normally if formatting the player with your PC.
- If you accidentally formatted using your PC, reformat it using the player.

Before operation

Using the headphones

Connect the headphones to the  socket.

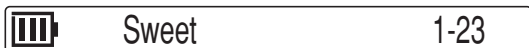
Turning the power on and off



Press **[▶ POWER]**. "HELLO!" appears briefly on the display and the power turns on.

The last selected status appears (Resume function).

Example:





Press **[▶ POWER]** (for at least 2 seconds). "SEE YOU!" appears and the power turns off.

Auto power off function

Leaving the player on for 15 minutes without using it automatically turns off the power. (except during an FM broadcast reception)

Battery indicator

 indicates that the battery is full and the power in battery will be come less when using.

 indicates low battery power and the battery should be charged.

Hold function

This prevents operation from stopping by accidentally pressing a button.

Set **[◀ HOLD]** to the left. "HOLD ON" appears briefly and the hold function is engaged.






- If an operation button is pressed while the hold function is engaged, "HOLD ON" will appear and nothing else happens.

Set **[▶ HOLD]** to the right. "HOLD OFF" appears briefly and the hold function is disengaged.

Selecting the function

1. In the stop mode, press **[MODE]** (for at least 2 seconds). The first stage menu appears.



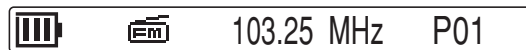
2. Press **[▶]**, then move **[▶]** right (**▶▶**) or left (**◀◀**) to select the desired function ("", " or "") and press **[▶]** again.

Example:

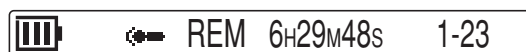
: Music function



: FM function



: Voice function



To adjust the volume

Press **[VOL] +** or **-**. The volume level appears.



Setting up the beep sound (refer to page 21)

Adjusting the contrast of LCD display (refer to page 21)

Setting up the backlight colour (refer to page 21)

Setting up the backlight time (refer to page 21)

Selecting the language (refer to page 21)

Playback

Play music

First, select "Music" function (refer to the previous page).

1. In the stop mode, press [MODE] (for at least 2 seconds). The first stage menu appears.



2. Move [▶] right or left to select "Music Setting".



3. Press [▶]. "SOUND EQ" appears.



4. Move [▶] right or left to select "PLAY SELECT".



5. Press [▶]. Playback mode selection display appears.



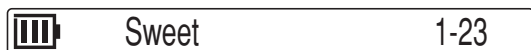
6. Move [▶] right or left to select the desired mode (FOLDER, ALL, ARTIST, ALBUM, GENRE or PLAY LIST), then press [▶].

- For details of the playback mode, please refer to "Examples of playback mode selection display" in page 16.
- When searching the item for more detail, repeat step 6.

When the desired mode has been selected, "PLAY SELECT" returns.



7. Press [MODE] twice to quit the menu setting mode.



8. Move [▶] right or left to select the music file you want to playback.



9. Press [▶]. Playback begins.



Play voice file

Recording voice → Refer to page 17.

First, select "Voice" function (refer to the previous page).

Press [▶]. "PLAY VOICE" appears, then press [▶] again. Playback begins.



Play FM radio file

Recording FM radio → Refer to page 18.

First, select "FM" function (refer to the previous page).

1. Press [▶]. "REC FM" appears.
2. Move [▶] right or left to select "PLAY FM", then press [▶]. Playback begins.



To stop playback

Press [▶].

Example:

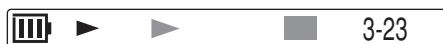
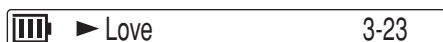


Press [▶] again (Music function) or press [▶] twice (Voice/FM function) to resume playback.

For Playlists playback: Create a playlist on the MusicFileMaster and transfer it to the player before starting playback.

Press [MODE] during play mode. The display mode changes.

Example:



Press [MODE] (for at least 2 seconds) during playback (only for files in the MUSIC (or FM) folder). The player enters to the menu setting mode.

Example:

"SOUND EQ" "BASS" or "REPEAT" (refer to page 21)

"NO FILE" appears if no file is in the folder.

Setting up the sound equalizer (refer to page 21)

Setting up the bass boost (refer to page 21)

Note:

- A few seconds may be required to start playback for large files or an extremely large number of files.
- Depending on the MP3/WMA file, the displayed playing time may be at variance with the actual playing time.
- Some MP3/WMA files may not be able to be played on this player.

Fast forward play

Move [▶] right (▶▶) during playback and hold it.
Release [▶] to resume normal playback.

Fast reverse play

Move [▶] left (◀◀) during playback and hold it.
Release [▶] to resume normal playback.

To skip to the next or previous file

Move [▶] right or left during playback or stop.

Selecting the repeat/random playback

Only for files in the MUSIC (or FM) folder:

1. In the stop mode, press [MODE] (for at least 2 seconds).
The first stage menu appears.



2. Move [▶] right or left to select "Music Setting".



3. Press [▶]. "SOUND EQ" appears.



4. Move [▶] right or left to select "REPEAT", then press [▶].



5. Move [▶] right or left to select the desired mode. Then press [▶]. "REPEAT" returns.
ALL: Plays all files (or all files in the selected ARTIST, ALBUM or GENRE) repeatedly.
RANDOM: Plays all files (or all files in the selected ARTIST, ALBUM or GENRE) randomly.
ONE: Repeats the current file only.
6. Press [MODE] repeatedly until the original display returns.

Examples of playback mode selection display

(Valid only for music files transferred by MusicFileMaster.)

- **ALL**: Selects all the music files.
- **ARTIST**: Selects the music files by artist name.
- **ALBUM**: Selects the music files by album name.
- **GENRE**: Selects the music files by genre name.
- **PLAYLIST**: Plays the music files in the playlist.
- **FOLDER**: (For the case when files are transferred by Explorer and Windows Media Player)
 - Selects all the folders in [FOLDER].
 - Selects all the subfolders in the selected folder.
 - Selects all the music files in the selected folder.
 - Selects all the music files in [FOLDER].

Note:

Use of the [Remake Management File of Device] function of the [Tools] menu of the Music File Master enables you to search for the piece of music which has been transferred by Explorer or Windows Media Player.

Recording voice

First, select "Voice" function (refer to page 13).

Recording time

The recording time differs as shown below.
(When [MusicFileMaster] and [Manual] folders are deleted)

Recording mode	Recording time (approx.)
DMP-M600	
HQ: High-quality	8 hr. 50 min.
SP: Standard	35 hr. 30 min.
DMP-M700	
HQ: High-quality	17 hr. 40 min.
SP: Standard	71 hr. 00 min.

Built-in microphone: Monaural recording

FM radio: Stereo recording

Selecting the recording mode

1. In the stop mode, press [MODE] (for at least 2 seconds).
The first stage menu appears.



2. Move [▶] right or left to select "Voice Setting".



3. Press [▶].



4. Press [▶].



5. Move [▶] right or left to select the recording mode.
Then press [▶]. "REC MODE" returns.
6. Press [MODE] repeatedly until the original display returns.

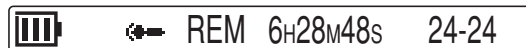
Starting a recording

1. Press [▶]. "PLAY VOICE" appears.
2. Move [▶] right or left to select "REC VOICE", then press [▶]. Recording begins.



To stop recording

Press [▶].



Note:

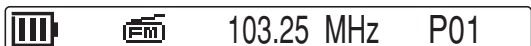
The player can record up to 255 files. "FILE FULL" appears when attempting to record the 256th file.

Listening to the FM radio

Important note:

When listening to the radio, you must connect the headphones. The headphones serve as an FM aerial.

First, select "FM" function (refer to page 13).

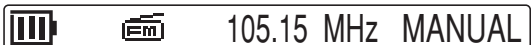


- If a radio frequency is not displayed; press [▶], then move [▶] right or left to select "LISTEN FM" and press [▶].

Automatic/Manual tuning

Automatic tuning

Move [▶] right or left for at least 1 second.



The automatic station scanning mode is set. The nearest station will be automatically scanned and scanning will be stopped.

Manual tuning

In the automatic tuning, move [▶] right or left. The manual tuning mode is set. Move [▶] right or left briefly until the desired frequency is displayed.

- Press [MODE]. The preset tuning mode returns.

User preset tuning

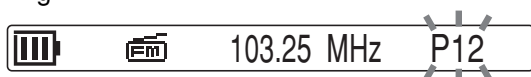
To preset stations

Up to 24 FM stations can be preset.

1. Tune in the station to be preset (refer to "Automatic/Manual tuning").
2. Press [▶]. "PRESET" appears.



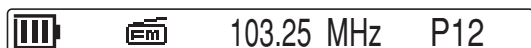
3. Press [▶] again within 5 seconds. The preset tuning mode is set and the first of an empty preset number is blinking.



Note:

Move [▶] right or left to select the desired preset number if required.

4. Press [▶] within 10 seconds to preset the station.



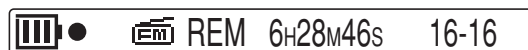
- In this example, "103.25 MHz" is preset on the preset number 12.
5. Repeat steps above to add more stations.

Listening to preset stations

Move [▶] right or left to select the preset number.

Recording FM radio

1. Tune in the station to be recorded.
2. Press [▶], then move [▶] right or left to select "REC FM".
3. Press [▶]. Recording begins. "HQ" recording mode is automatically selected.



To stop recording

Press [▶].

Setting up the FM mode (refer to page 21)

Setting up the preset stations (refer to page 21)

Erasing

Erasing a file

First, select the function (Music, FM or Voice) which has the file to be erased.

1. In the stop mode, press [MODE] (for at least 2 seconds). The first stage menu appears.



2. Move [▶] right or left to select "CommonSetting".



3. Press [▶].



4. Press [▶].



5. Move [▶] right or left to select "FILE".



Note:

If you do not want to erase, select "CANCEL".

6. Press [▶]. Erasing file name appears.



7. Move [▶] right or left to select the file to be erased.



8. Press [▶] (for at least 2 seconds). The selected file is erased.

9. Press [MODE] repeatedly until the original display returns.

Erasing all files in the selected folder

First, select the function (Music, FM or Voice) which has the folder to be erased.

1. Select "FOLDER" in the step 5 above.



Note:

If you do not want to erase, select "CANCEL".

2. Press [▶]. Erasing folder name appears.



3. Press [▶] (for at least 2 seconds). All the files in the selected folder are erased.

4. Press [MODE] repeatedly until the original display returns.

Note:

Only MP3/WMA files playable on this unit can be erased. Erasing files in other formats is not possible. Nothing is erased if there are no MP3/WMA files in the playable folders.

Formatting (Erasing all files in all folders)

If you select the format function from the menu, the memory will be initialised and all files will be erased. Use only when you need it. Save a backup copy of your recorded messages on a PC, etc.

1. In the stop mode, press [MODE] (for at least 2 seconds). The first stage menu appears.

2. Move [▶] right or left to select "CommonSetting".

3. Press [▶]. "FILE ERASE" appears.

4. Move [▶] right or left to select "FORMAT".



5. Press [▶].



6. Move [▶] right or left to select "MEMORY".



Note:

If you do not want to format, select "CANCEL".

7. Press [▶]. "FORMATTING", then "FORMAT COMPLETE" appears and all files are erased.

8. Press [MODE] repeatedly until the original display returns.

Menu setting

Common procedures of menu setting

1. In the stop mode, press [MODE] (for at least 2 seconds).
The first stage menu appears.
2. Move [▶] right or left to select the first stage menu, then press [▶] to confirm the menu.

“Function” ↔ “Music Setting” ↔ “Tuner Setting”
 ↔ “Voice Setting” ↔ “CommonSetting” ↔ ...

The second stage menu appears.
3. Move [▶] right or left to select the second stage menu, then press [▶] to confirm the menu.

4. To change the setting of the selected menu, move [▶] right or left. Then press [▶].
When the setting is completed, the second stage menu returns.
 - Press [MODE] once during the menu setting. The setting is cancelled and the previous menu returns.
5. Press [MODE] repeatedly to quit the menu setting mode.

Menu function table


Stage 1	Stage 2	Item
Function		: (Music), : (FM), : (Voice)
Music Setting	SOUND EQ BASS REPEAT PLAY SELECT	POP, ROCK, JAZZ, NOR ON, OFF ALL, RANDOM, ONE FOLDER, ALL, ARTIST, ALBUM, GENRE, PLAY LIST
Tuner Setting	FM MODE PRESET	FM MODE (STEREO, MONO) XE, USER, CLEAR
Voice Setting	REC MODE	REC MODE (HQ, SP)
CommonSetting	FILE ERASE BEEP FORMAT LCD CONTRAST LIGHT COLOR LIGHT TIME LANGUAGE VERSION	ERASE (CANCEL, FILE, FOLDER) BEEP (ON, OFF) FORMAT (CANCEL, MEMORY) CONTRAST (1 to 10) COLOR (NORMAL, RED, BLUE, GREEN, YELLOW, MAGENTA, CYAN, WHITE, RANDOM, OFF) TIME (2 Sec, 5 Sec) ENGLISH, FRENCH, GERMAN, SPANISH, RUSSIAN, ITALIAN Ver 1.00

Function

Selecting the function



: Music function

: FM function

: Voice function

Music Setting

SOUND EQ: Setting up the sound equalizer



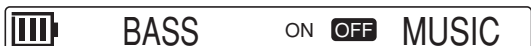
POP: Pop

ROCK: Rock

JAZZ: Jazz

NOR: Normal (Deactivates the Equalizer function)

BASS: Setting up the bass boost



ON: On

OFF: Off

REPEAT: Selecting the repeat/random mode (refer to page 15)

PLAY SELECT: Selecting the play mode



(Displayed in the "Music" mode only.)

FOLDER: Selects all the files in the selected folder.

ALL: Selects all the files.

ARTIST: Selects the files by artist name.

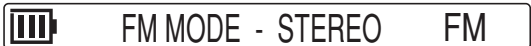
ALBUM: Selects the files by album name.

GENRE: Selects the files by genre name.

PLAY LIST: Plays the files in the playlist.

Tuner Setting

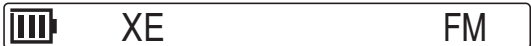
FM MODE: Setting up the FM mode.



STEREO: Stereo

MONO: Monaural

PRESET: Setting up the preset stations.



XE: Selects initial preset stations.

USER: Selects user preset stations.

"NO DATA" appears when user preset has not been set.

CLEAR: Clears user preset stations.

Voice Setting

REC MODE: Selecting the recording mode (refer to page 17)

CommonSetting

FILE ERASE: Erasing files or folders (refer to page 19)

BEEP: Setting up the beep sound

Turning on and off the beep when buttons are pressed or moved.

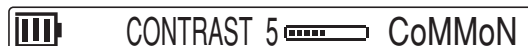


ON: Beep on

OFF: Off

FORMAT: Formatting (refer to page 19)

LCD CONTRAST: Adjusting the contrast of LCD display



1 - 10

LIGHT COLOR: Setting up the backlight colour



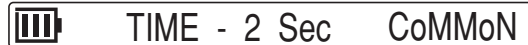
NORMAL, RED, BLUE, GREEN, YELLOW, MAGENTA, CYAN, WHITE, RANDOM, OFF

Note:

NORMAL: The light colour is selected by the operation mode.

RANDOM: The light colour is randomly selected.

LIGHT TIME: Setting up the backlight time



2 Sec: Turns off the backlight after 2 seconds.

5 Sec: Turns off the backlight after 5 seconds.

LANGUAGE: Selecting the language for Artist, Title name, etc.



ENGLISH: English

FRENCH: French

GERMAN: German

SPANISH: Spanish

RUSSIAN: Russian

ITALIAN: Italian

VERSION: Checking the version number



Troubleshooting guide

Symptom

Possible cause

Corrective action

The player does not start.

Charging battery has run down.

Charge the built-in battery.

Playback/Recording is not normal.

Internal memory error.

Format (initialize) the internal memory.

Buttons do not respond.

The hold function is set.

Turn off the function.

The USB cable is still connected.

Disconnect the USB cable.

No sound.

The volume is turned down too low.

Adjust the volume.

Files in the VOICE or FM folder cannot be played.

The file name is wrong.

Changing files names using your PC will render files unplayable. Return the file name to "IC_V (or R)_XXX (file number).MP3".

Files cannot be played (correctly or at all).

The file is not in a playable format.

Use MP3/WMA-format files.

Files on the PC were not transferred to the MUSIC folder.

Transfer them to the MUSIC folder on [Removable Disk].

This is data which cannot be played on the player.

Create a file using different encoder (MP3/WMA conversion) software.

In selection of music piece, it is impossible to make a search for artist, album and genre.

The database of the transferred musics is not created.

Create the database of the pieces of music transferred by [MusicFileMaster].

For detailed information of recreation of database, please refer to the on-line help of [MusicFileMaster].

Symptom

Possible cause

Corrective action

The Removable Disk is not displayed when the player is connected to the PC.

The PC and the player are not connected correctly.

Make sure the connect is corrected.

Disconnect the USB cable from the PC and reconnect it again.

Sufficient power is not being supplied from the PC.

If a USB hub is being used, reconnect the player directly to the USB port on the PC. If the PC is equipped with several different USB ports, try another port.

A network drive has been assigned.

If a network drive has been assigned, the drive letter (the letters used as drive names) is already taken, so the Removable Disk cannot be created.

Change the network drive assignments and reconnect. Talk to your network administrator about reassigning network drives.

A file can't be erased.

The attribute of the file is set up only for reading.

Please erase a file whether connects this to a PC and changes file attribute. Or please do format of internal memory (initialization).

FM broadcast cannot be received (recorded).


The headphones are not connected.

Connect the headphones.

Player is not recognised correctly by MusicFileMaster.

MusicFileMaster was started up immediately after formatting the player by PC.

Format it by player and connect the player to your PC before starting up the MusicFileMaster. (Refer to page 19)

"" blinks.

The battery is not charged normally.

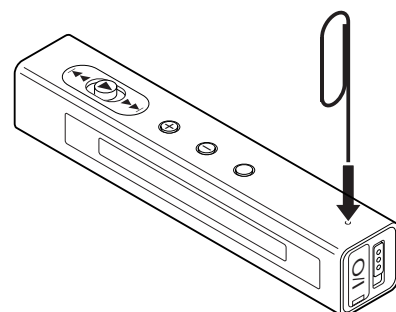
Consult your dealer.

WHAT TO DO IF...

If the operation of the player or display is not normal,

1. Press [RESET] using a clip, etc.
2. Resume operation.

This operation should not be performed under ordinary circumstances.



Cleaning the cabinet

Clean the outside of the player with a clean soft cloth, moistened with lukewarm water. Do not use benzene, thinner or alcohol since they will mar the finish of the surfaces.

Specifications

Internal memory: 512MB (DMP-M600), 1GB (DMP-M700)

Frequency response (playback): 20Hz - 20kHz

Music playback capability:

MP3 [MPEG 1, 2 Layer3], [MPEG 2.5] (16 - 44.1kHz, 16 - 192kbps)

WMA [Windows Media Audio] (16 - 44.1kHz, 32 - 160kbps)

Tuner reception frequency: FM: 87.5 - 108 MHz

Terminals: USB, Ω (Headphones)

Output power: 10mW + 10mW

Power source: Lithium Ion battery

Full charging time: Approx. 2 hours

Battery life (playback): 10 hours

Dimensions (W x H x D): Approx. 15.6 x 87 x 15.6 mm

Weight: Approx. 23 g

Specifications subject to change without notice.

You can download the USB driver or the latest software, if available, from our web site.

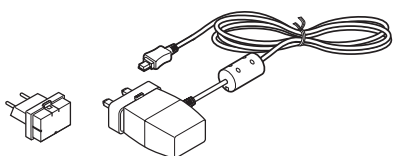
<http://www.sanyo-audio.com/english/index.html>

The optional AC adaptor is available.

Model No.: D-5V-USB

Note:

This adaptor is available only in EU countries.



This set complies with the EMC Directive 89/336 and with the LVD Directive 73/23.

SANYO

SANYO Electric Co., Ltd.

Free Manuals Download Website

<http://myh66.com>

<http://usermanuals.us>

<http://www.somanuals.com>

<http://www.4manuals.cc>

<http://www.manual-lib.com>

<http://www.404manual.com>

<http://www.luxmanual.com>

<http://aubethermostatmanual.com>

Golf course search by state

<http://golfingnear.com>

Email search by domain

<http://emailbydomain.com>

Auto manuals search

<http://auto.somanuals.com>

TV manuals search

<http://tv.somanuals.com>