

Dust full indicator turns red	<ol style="list-style-type: none"> 1. Dust bag is full 2. Floor brush, hose or tube clogged 3. Filter clogged 	<ol style="list-style-type: none"> 1. Clean or replace the dust bag 2. Remove the blockage 3. Remove the blockage
-------------------------------	--	--

TECHNICAL SPECIFICATIONS

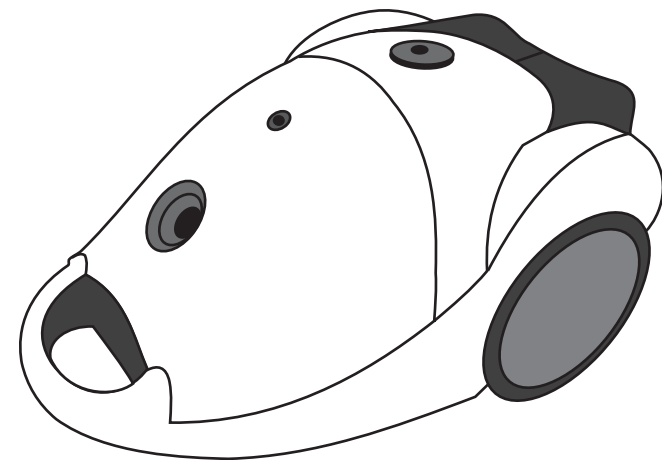
Rated voltage	230-240V	Power consumption	1800W
Rated frequency	50Hz	Dust bag capacity	3L
Power cord length	4.5m		

SANYO

INSTRUCTION MANUAL

SC-183L

Vacuum Cleaner



SANYO

SANYO Electric Co., Ltd.

IMPORTANT SAFETY INSTRUCTIONS

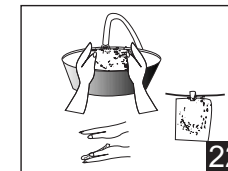
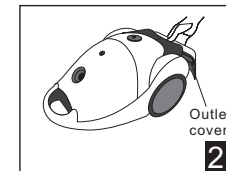
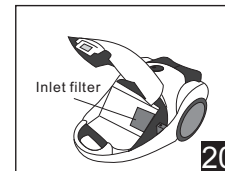
When using an electrical appliance, basic precautions should always be followed including the following.

READ ALL INSTRUCTIONS BEFORE USING THIS APPLIANCE

WARNING

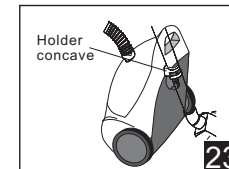
-To reduce the risk of fire, electric shock, or injury:

- Do not leave appliance when plugged in. Unplug from outlet when not in use. (Figure 1)
- Do not use outdoors or on wet surfaces.
- Do not allow to be used as a toy. Children should be supervised to ensure that they do not play with the appliance.
- The appliance is not intended for use by persons (including children) with reduced physical, sensory or mental capabilities, or lack of experience and knowledge, unless they have been given supervision or instruction concerning use of the appliance by a person responsible for their safety.
- Use only as described in this manual. Use only supplied attachments.
- Do not use with damaged hose, cord or plug. If appliance is not working as it should, has been dropped, damaged, left outdoors, or dropped into water, it must be repaired by qualified service agent. (Figure 2)
- Do not pull or carry by cord, pedal cord, use cord as a handle, close a door on cord, or pull cord around sharp edges or corners. Do not run appliance over cord. Keep cord away from heated surfaces. (Figure 3)



STORAGE

When not in use, hook the tube holder onto the holder concave on the bottom of the cleaner. (Figure 23)



TROUBLESHOOTING

If you have a problem with your cleaner, consult the handy guide below. If the cleaner is malfunctioning, do not operate it before asking for service.

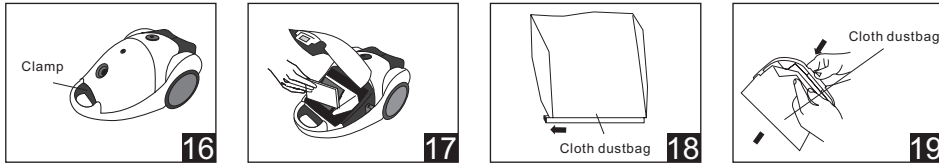
Problem	Possible cause	Possible solution
Cleaner won't run	<ol style="list-style-type: none"> 1. Not firmly plugged in 2. Power is off 	<ol style="list-style-type: none"> 1. Plug unit in firmly 2. Turn the power on
Low suction	<ol style="list-style-type: none"> 1. Clogged floor brush, hose or tube 2. Full of dust in the dust bag 3. Clogged the filter 	<ol style="list-style-type: none"> 1. Remove the blockage 2. Empty the dust bag 3. Clean or replace the filter
Cord doesn't fully rewind	<ol style="list-style-type: none"> 1. Cord twisted or uneven 	<ol style="list-style-type: none"> 1. Pull out the cord and rewind

CARE AND CLEANING

Caution: Be sure to turn the power off and unplug the unit before cleaning.

Note: To maintain maximum cleaning performance, empty the dust bag and clean the filters often.

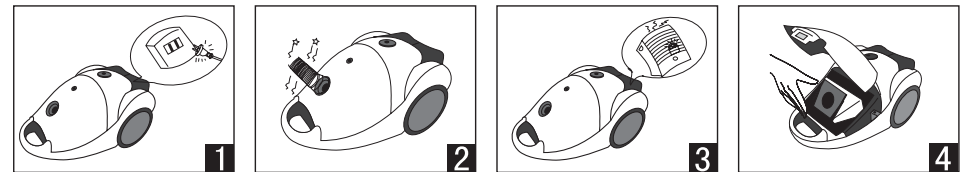
- Dust bag
 1. Lift up the clamp to open the front cover. (Figure 16)
 2. Take out the dust bag holder with the dust bag. (Figure 17)
 3. If you use a paper bag, replace it with a new one. If a cloth dust bag, take out the clip and clean out dust. Put the bag back to its position. Ensure to seal the bag well with the clip. (Figure 18)
 4. To assemble the dust bag, press the clamp on the bag holder, and insert the dust bag into the two slots. Release the button to clip the dust bag. (Figure 19)
 5. If the dust bag is broken, replace it immediately.



- Clean inlet/outlet filter
 1. Open the front cover and turn the dust bag holder over to take out the air inlet filter. (Figure 20)
 2. Press the clamp on the outlet cover to take out the air outlet filter. (Figure 21)
 3. Wash the filters in water and dry off with towel. Dry the filters completely in a cool place before putting back into the cleaner. Be sure to dry naturally to prevent deformation. (Figure 22)

Caution: Do not use organic solvents, including thinner, or other strong cleaning liquids such as alkaline detergents. Use of such substances may cause discoloration or deterioration of materials resulting in deformation or cracking. Do not wash the filters in a washing machine or dry the filters with a hair dryer to avoid deformation.

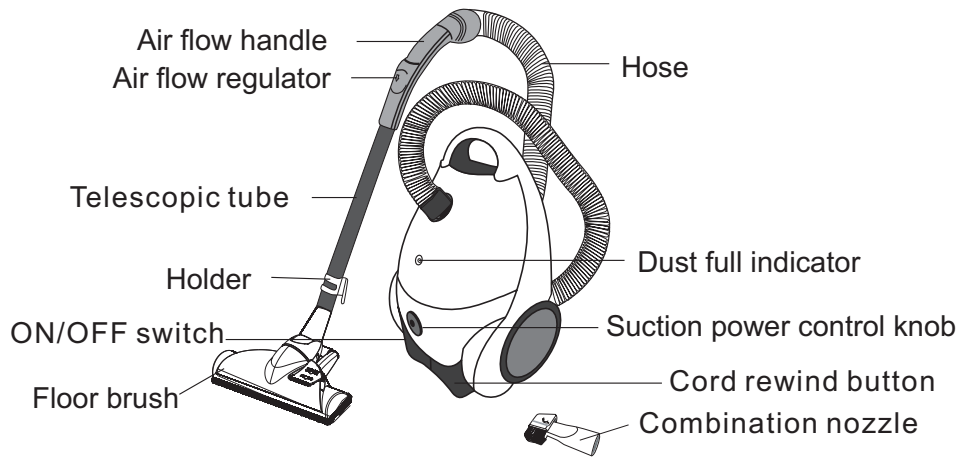
- Do not unplug by pulling on cord. To unplug, grasp the plug, not the cord.
- Do not handle plug or appliance with wet hands.
- Do not put any object into openings. Do not use with any opening blocked; keep free of dust, lint, hair, and anything that may reduce air flow.
- Keep hair, loose clothing, fingers, and all parts of body away from openings and moving parts.
- Do not pick up anything that is burning or smoking, such as cigarettes, matches, or hot ashes.
- Do not use without filters in place.
- Turn off all controls before unplugging.
- Use extra care when cleaning on stairs.
- Do not use to pick up flammable or combustible liquids such as gasoline or use in areas when they may be present.
- Hold plug when rewinding onto cord reel. Do not allow plug to whip when rewinding.
- Avoid using in a vertical position.
- If you find the motor temperature too high or any unusual noise when using, stop the operation and do not open the appliance.
- Do not operate the appliance without dust bag in place. (Figure 4)



SAVE THESE INSTRUCTIONS

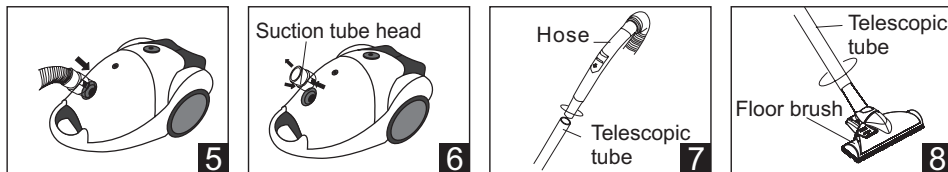
This vacuum cleaner is intended for household use only.

NAMES OF PARTS



HOW TO ASSEMBLE/DISASSEMBLE

- To connect hose, press the button on the hose end and insert the hose into the opening until the hose locks. (Figure 5) To detach, press the button on the hose end and pull the hose toward you. (Figure 6)
- To connect hose with telescopic tube, insert the hose into bigger end of the tube and rotate until firmly connected. (Figure 7)
- Put the floor brush or the combination nozzle into the telescopic tube and rotate to connect them firmly. (Figure 8)



HOW TO USE

- Plug and power cord

Important: The power cord has a yellow marking and a red marking. Up to yellow marking is the recommended length. Never pull the cord beyond the red marking.

Before starting operation, pull out the power cord and connect the plug. After using, be sure to disconnect the plug and rewind the power cord. To rewind the power cord, press the cord rewind button. Before rewinding, be sure the cord is unplugged. (Figure 9 & 10)

- ON/OFF

Press the ON/OFF switch on the body of the cleaner to start or stop operation. (Figure 11)

- Variable Power

To control suction power, rotate the suction power control knob on the body. Turn the knob to the right end for maximum power. Turn the knob to the left end for minimum power. (Figure 12)

Suction power can also be controlled by sliding the air flow regulator on the hose. Slide up to the upper end for maximum power. Slide down to the lower end for minimum power (Figure 13)

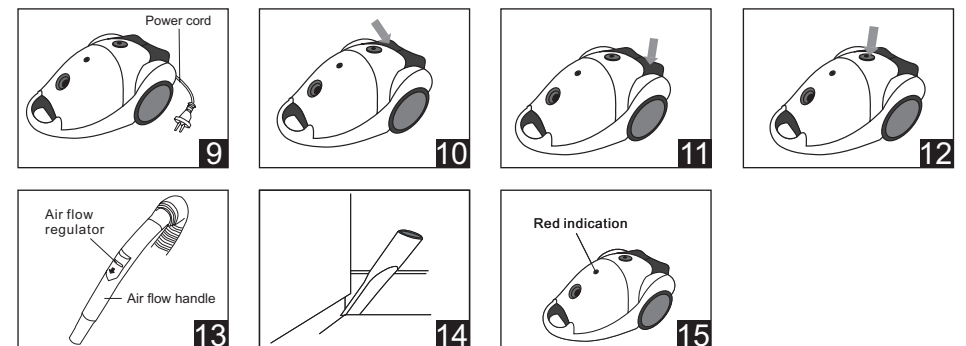
- Combination nozzle

Use the crevice nozzle to vacuum edges and gaps. (Figure 14)

The head of the combination nozzle can rotate. Use the round brush to vacuum sofa, curtain or fragile or easily scratched items.

- Dust full indicator

When the dust full indicator displays red, the dust bag is full. You need to clean out cloth dust bag or replace the paper dust bag. Clean the air filter as needed. (Figure 15)



Free Manuals Download Website

<http://myh66.com>

<http://usermanuals.us>

<http://www.somanuals.com>

<http://www.4manuals.cc>

<http://www.manual-lib.com>

<http://www.404manual.com>

<http://www.luxmanual.com>

<http://aubethermostatmanual.com>

Golf course search by state

<http://golfingnear.com>

Email search by domain

<http://emailbydomain.com>

Auto manuals search

<http://auto.somanuals.com>

TV manuals search

<http://tv.somanuals.com>