

PARTS LIST

Vacuum Cleaner

SC-C1250 (U.S.A.)

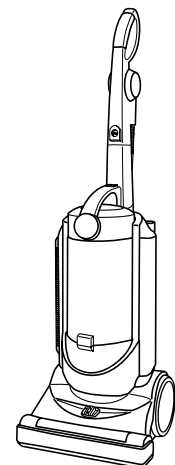
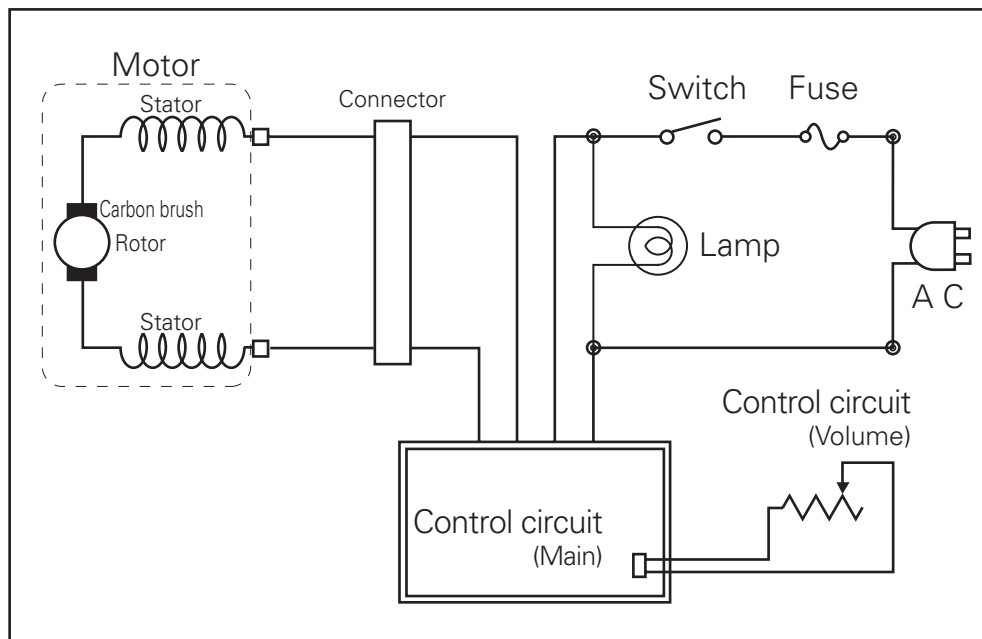
Specifications

Power source	: AC 120 V 60 Hz
Power consumption	: 12 A
Motor revolution	: 36,700 r.p.m.
Vacuum	: 23,000 Pa
Dimensions L X W X H	: 14 - 3/4" x 13 - 17/32" x 45 - 1/8" (375 X 344 X 1,147 mm)
Net weight	: 21 lbs. 10 ozs. (9.8 Kg)
Attachment	: Suction hose, Wand, Crevice tool, Upholstery brush, Duster arm

PRODUCT CODE NO.

1 - 326 736 31 (S)

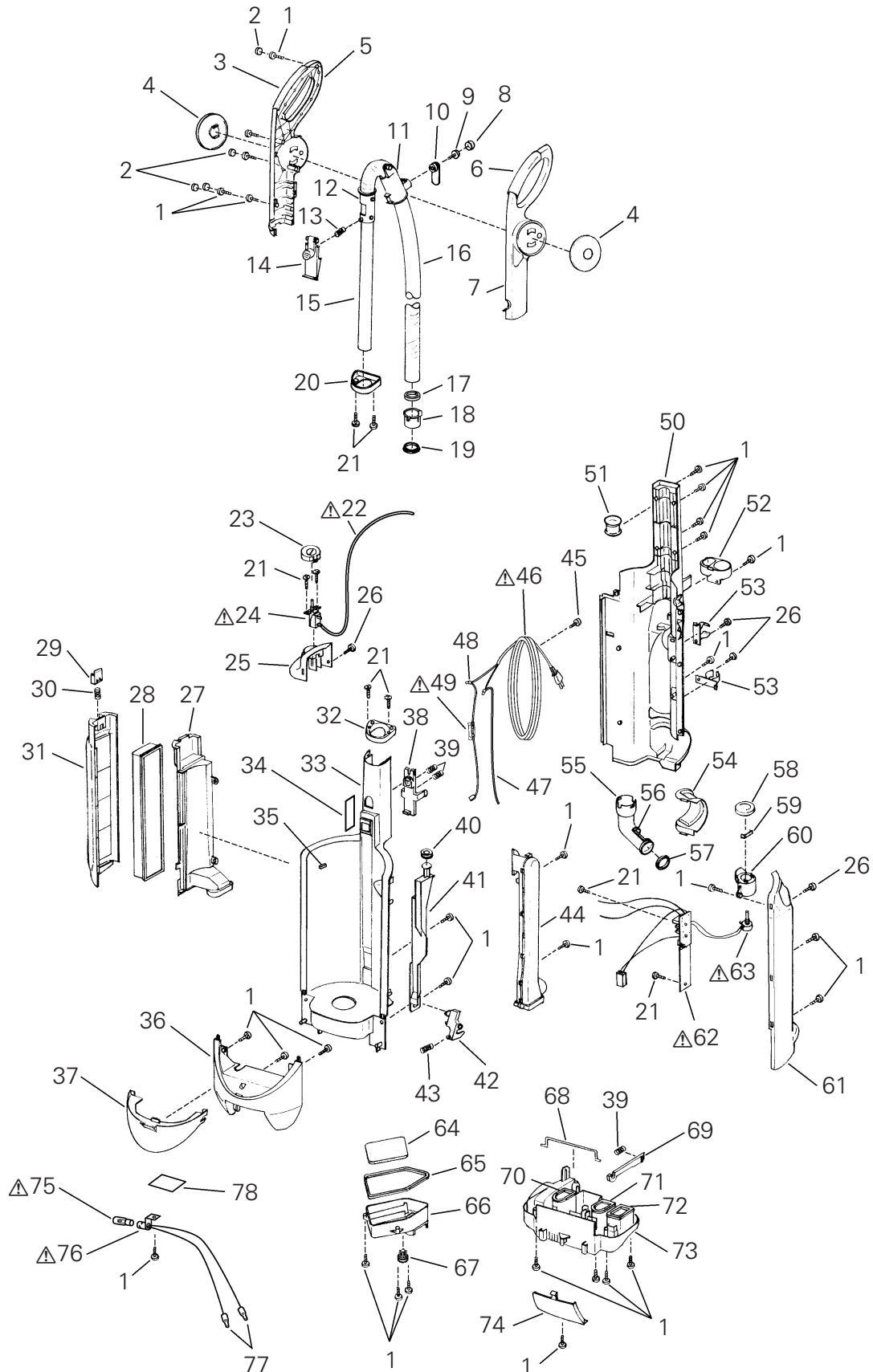
Wiring Diagram



**Exploded View
(Case unit)**

NOTE: The parts marked with Δ have special characteristics of safety,
if replace the Δ mark parts, use only SANYO specified parts.

SC-C1250 (U.S.A.)



**Parts List
(Case unit)**

NOTE: The parts marked with \triangle have special characteristics of safety,
if replace the \triangle mark parts,use only SANYO specified parts.

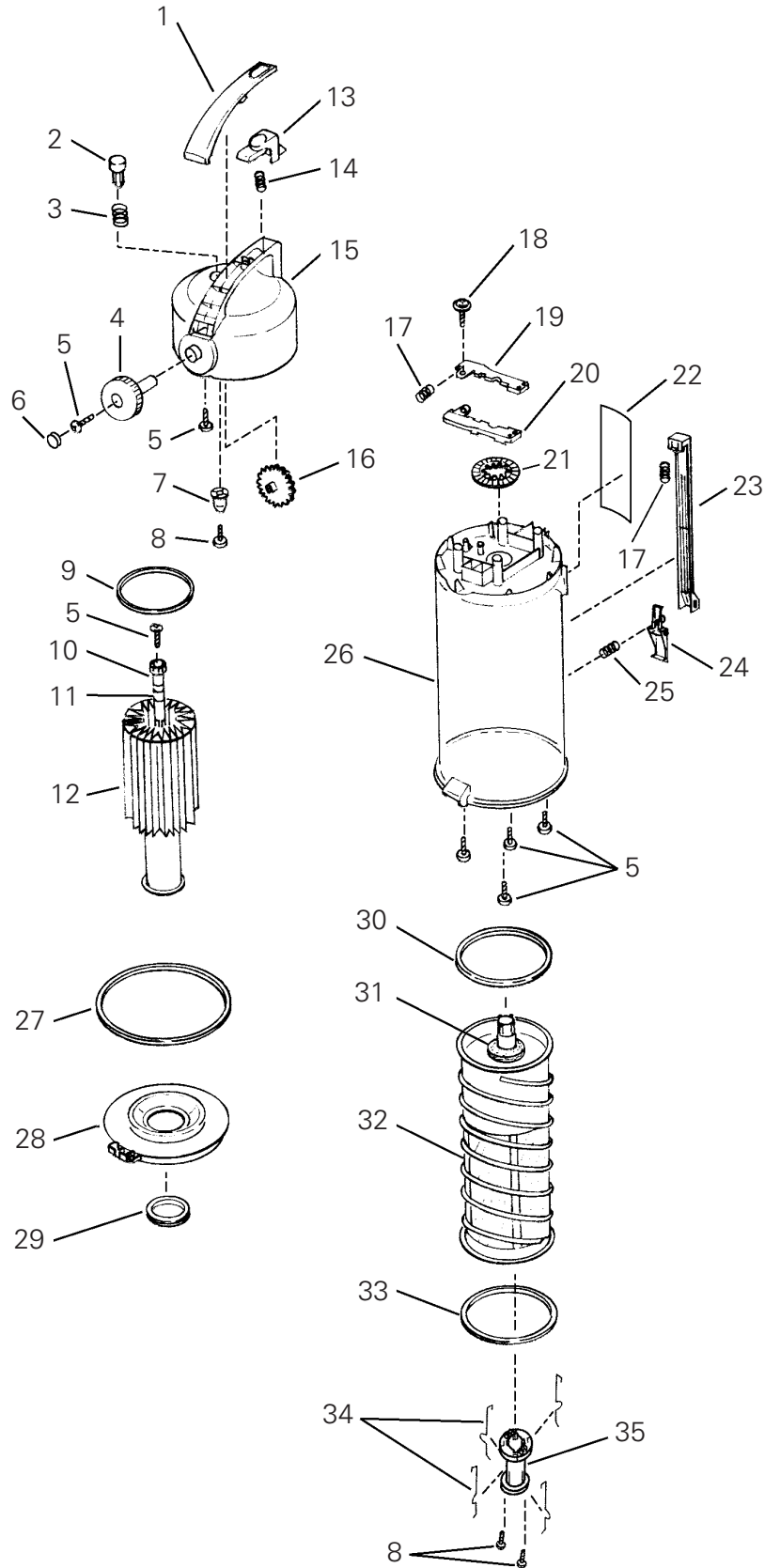
SC-C1250 (U.S.A.)

Key No.	Parts No.	Description	Q'ty	Key No.	Parts No.	Description	Q'ty
1	663 000 0847	SCREW (4X16)	30	51	663 000 3152	GRIP PIPE FITTING	1
2	663 000 2681	INLEY PLUG	4	52	663 000 3169	ATTACHMENT SUPPORTER A	1
3	663 000 2698	WHEEL CAP (N3-99T)	2	53	663 000 3176	ATTACHMENT SUPPORTER B	2
4	663 000 2704	GRIP INSCRIPTION (B-551)	1	54	663 000 3183	BYPASS COVER OUTER (B-551)	1
5	663 000 2711	GRIP RIGHT (N3-99T)	1	55	663 000 3190	BYPASS TUBE	1
6	663 000 2728	GRIP COVER LEFT	1	56	663 000 3206	AIR SPREADER (BYPASS TUBE)	1
7	663 000 2735	GRIP LEFT (N3-99T)	1	57	663 000 3213	AIR INLET PACKING (BYPASS TUBE)	1
8	663 000 2742	HANDLE ORNAMENT	1	58	663 000 3220	SWITCH KNOB (NN-B)	1
9	663 000 2759	SCREW 4X14	1	59	663 000 3237	LEAF SPRING	1
10	663 000 2766	CORD HOOK	1	60	663 000 3244	SWITCH HOLDER	1
11	663 000 2773	SUCTION HOSE COVER	1	61	663 000 3251	AIR INLET COVER	1
12	663 000 2780	HOSE JOINT PIPE GRIP	1	\triangle 62	663 000 3268	CONTROL CIRCUITE ASSEMBLY A	1
13	663 000 2797	CRAMP SPRING	1	\triangle 63	663 000 3275	CONTROL CIRCUITE ASSEMBLY B	1
14	663 000 2803	CRAMP BUTTON (N1-249)	1	64	663 000 3282	AIR INLET FILTER	1
15	663 000 2810	GRIP PIPE	1	65	663 000 3299	BYPASS PACKING UPPER	1
16	663 000 4401	SUCTION HOSE	1	66	663 000 3305	BYPASS COVER INNER	1
17	663 000 2834	AIR SPREADER (SUCTION HOSE)	1	67	663 000 3312	TRANSMISSION ASSEMBLY	1
18	663 000 4418	HOSE JOINT PIPE A	1	68	663 000 3329	CRAMP PIN	1
19	663 000 2858	HOSE JOINT PACKING	1	69	663 000 3336	CRAMP LEVER LOWER	1
20	663 000 2865	GRIP SUPPLEMENT (N1-233)	1	70	663 000 3343	AIR OUTLET PACKING	1
21	663 000 2872	SCREW (3X10)	8	71	663 000 3350	BYPASS PACKING LOWER	1
\triangle 22	663 000 2407	CORD ASSEMBLY (BLACK) L=350	1	72	663 000 3367	AIR INLET PACKING (CASE LOWER)	1
23	663 000 2889	SWITCH BUTTON (N3-99T)	1	73	663 000 3374	CASE LOWER (B-551)	1
\triangle 24	663 000 2896	SWITCH	1	74	663 000 3381	CASE ORNAMENT (N1-251)	1
25	663 000 2902	SWITCH ORNAMENT (B-551)	1	\triangle 75	663 000 3398	LAMP	1
26	663 000 2919	SCREW (4X12)	4	\triangle 76	663 000 3404	LAMP HOLDER	1
27	663 000 2926	AIR OUTLET GUIDE	1	77	663 000 2193	WIRE CONNECTOR (CE-530)	2
28	663 000 2933	OUTLET FILTER ASSEMBLY	1	78	663 000 3411	SHIELD SHEET	1
29	663 000 2940	CRAMP LEVER UPPER (PB-102)	1				
30	663 000 4425	CRAMP SPRING C	1				
31	663 000 2964	AIR OUTLET (B-551)	1				
32	663 000 2971	SUPPLEMENT CASE (N1-233)	1				
33	663 000 2988	CASE FRONT (NN-B)	1				
34	663 000 2995	CAUTION LABEL (CASE FRONT)	1				
35	663 000 4432	CUSHION (CASE FRONT)	2				
36	663 000 3015	CASE COVER LOWER (N3-99T)	1				
37	663 000 3022	CASE COVER UPPER (B-551)	1				
38	663 000 3039	CRAMP HOOK STOPPER (PB-102)	1				
39	663 000 3046	HELICAL SPRING	3				
40	663 000 3053	PACKING (SHUTTER)	1				
41	663 000 3060	SHUTTER	1				
42	663 000 3077	SHUTTER ARM	1				
43	663 000 3084	HELICAL SPRING (SHUTTER ARM)	1				
44	663 000 3091	AIR INLET ASSEMBLY	1				
45	663 000 3107	SCREW	1				
\triangle 46	663 000 3114	POWER CORD (U2)	1				
47	663 000 3121	LEAD WIRE (WHITE) L=250	1				
48	663 000 0700	WIRE CONNECTOR (CE-230)	2				
\triangle 49	663 000 3138	FUSE ASSEMBLY (125V 12A)	1				
50	663 000 3145	CASE REAR (N3-99T)	1				

COLOR CODE:N3-99T(SILVER),B-551(BLUE),PB-102(PURPLE),N1-233/N1-249/N1-251(GRAY),NN-B(BLACK)

**Exploded View
(Dust box)**

SC-C1250 (U.S.A.)





Parts List
(Dust box)

SC-C1250 (U.S.A.)

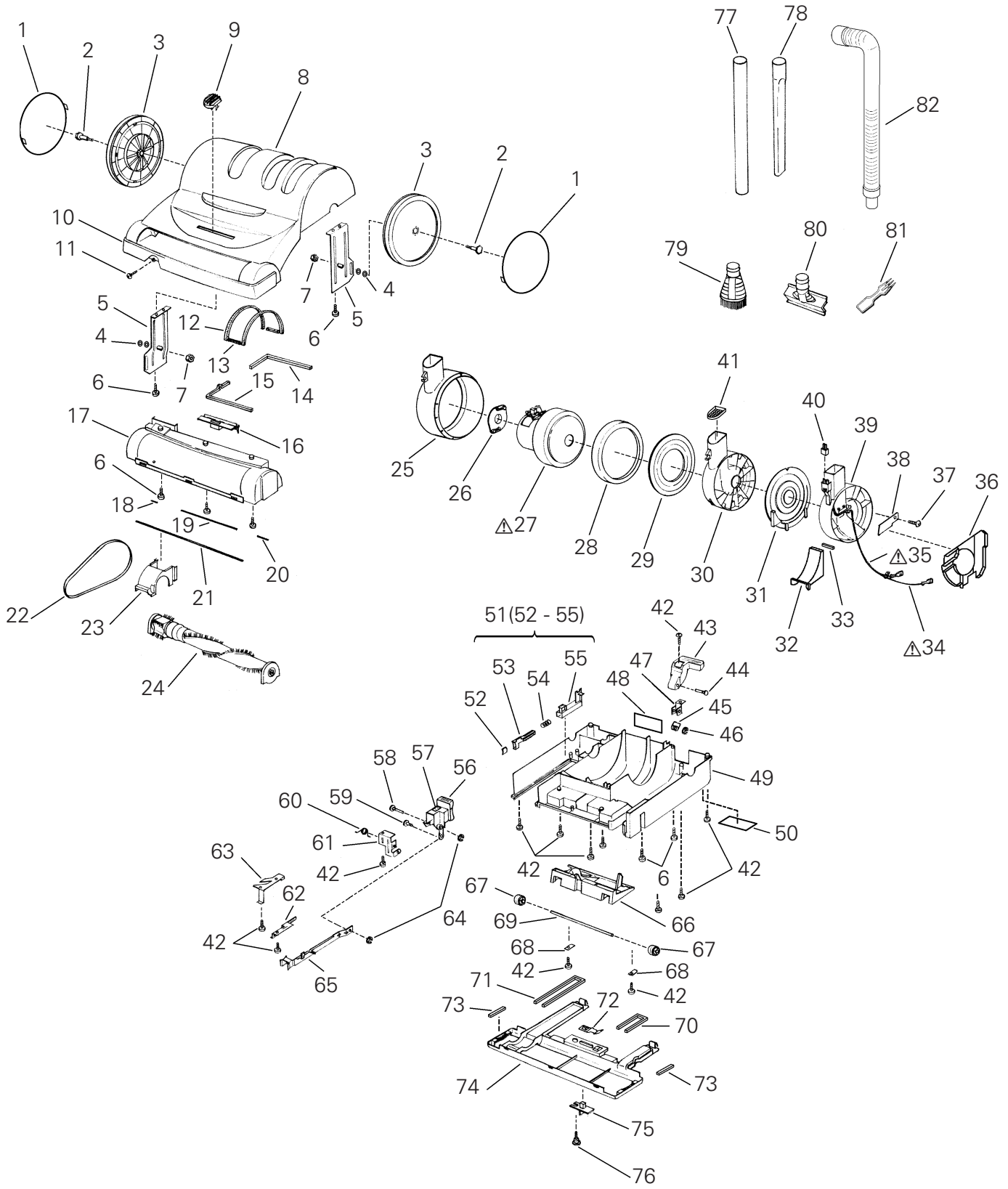
Key No.	Parts No.	Description	Q'ty	Key No.	Parts No.	Description	Q'ty
1	663 000 3428	HANDLE UPPER (N3-99T)	1				
2	663 000 3435	CRAMP BUTTON (DUST)	1				
3	663 000 3442	CRAMP SPRING (DUST)	1				
4	663 000 3459	DUSTER HANDLE (N3-99T)	1				
5	663 000 0243	SCREW (4X20)	7				
6	663 000 3466	HANDLE ORNAMENT (N3-99T)	1				
7	663 000 3473	CRAMP HOOK STOPPER MIDLE	1				
8	663 000 0847	SCREW (4X16)	3				
9	663 000 3480	PACKING (DUST FILTER ASSEMBLY)	1				
10	663 000 3497	DUSTER FRAME	1				
11	663 000 3503	PACKING (DUSTER FRAME)	1				
12	663 000 3510	DUST FILTER ASSEMBLY	1				
13	663 000 3527	CRAMP BUTTON (HANDLE)	1				
14	663 000 2797	CRAMP SPRING	1				
15	663 000 3534	DUST BOX COVER (N1-232)	1				
16	663 000 3541	GEAR A (HANDLE)	1				
17	663 000 3046	HELICAL SPRING	2				
18	663 000 3107	SCREW	1				
19	663 000 3558	CRAMP HOOK STOPPER UPPER	1				
20	663 000 3565	CRAMP HOOK STOPPER LOWER	1				
21	663 000 3572	GEAR B (DUST)	1				
22	663 000 3589	CAUTION LABEL	1				
23	663 000 3596	CRAMP LEVER (DUST)	1				
24	663 000 3602	CRAMP HOOK	1				
25	663 000 2957	CRAMP SPRING A	1				
26	663 000 3619	DUST BOX ASSEMBLY	1				
27	663 000 3626	DUST FILTER PACKING	1				
28	663 000 3633	DUST FILTER COVER	1				
29	663 000 3640	PACKING (DUST FILTER COVER)	1				
30	663 000 3657	PACKING (PRE FILTER ASSEMBLY UPPER)	1				
31	663 000 3664	AIR SPREADER (PRE FILTER)	1				
32	663 000 3671	PRE FILTER ASSEMBLY	1				
33	663 000 3688	PACKING (PRE FILTER ASSEMBLY LOWER)	1				
34	663 000 4449	DUSTER ARM	4				
35	663 000 3701	DUSTER HOLDER	1				

COLOR CODE:N3-99T(SILVER),N1-232(GRAY)

**Exploded View
(Power head)**

NOTE: The parts marked with  have special characteristics of safety, if replace the  mark parts, use only SANYO specified parts.

SC-C1250 (U.S.A.)



**Parts List
(Power head)**

NOTE: The parts marked with \triangle have special characteristics of safety,
if replace the \triangle mark parts,use only SANYO specified parts.

SC-C1250 (U.S.A.)

Key No.	Parts No.	Description	Q'ty	Key No.	Parts No.	Description	Q'ty
1	663 000 2698	WHEEL CAP (N3-99T)	2	50	663 000 4142	CAUTION LABEL (BOTTOM PLATE REAR)	1
2	663 000 3718	WHEEL SHAFT	2	51	663 000 4159	ARM ASSEMBLY KEYNO(52-55)	1
3	663 000 3725	WHEEL REAR (B-551)	2	52	663 000 3008	CUSHION	1
4	663 000 3732	WASHER	4	53	663 000 4166	ARM A	1
5	663 000 3749	WHEEL HOLDER REAR	2	54	663 000 4173	HELICAL SPRING	1
6	663 000 2919	SCREW (4X12)	7	55	663 000 4180	ARM B	1
7	663 000 3756	NUT HEX+FLG W/SRT 6	2	56	663 000 4197	PEDAL RIGHT (NN-B)	1
8	663 000 3763	CASE UPPER	1	57	663 000 4203	CAUTION LABEL (PEDAL RIGHT)	1
9	663 000 3770	LEVER KNOB UPPER (B-551)	1	58	663 000 4210	SHAFT B	1
10	663 000 3787	BUMPER (B-551)	1	59	663 000 4227	SHAFT C	1
11	663 000 2872	SCREW (3X10)	1	60	663 000 4234	TORSION SPRINGB	1
12	663 000 3794	AIR SPREADER (CASE UPPER SIDE)	2	61	663 000 4241	PEDAL HOLDER B	1
13	663 000 3800	AIR SPREADER (CASE UPPER F,R)	2	62	663 000 4258	SLIDE LEVER PLATE B	1
14	663 000 3817	PACKING REAR	1	63	663 000 4265	SLIDE LEVER PLATE A	1
15	663 000 3824	PACKING MIDDLE	1	64	663 000 4104	RING E4	2
16	663 000 3831	LEVER KNOB LOWER	1	65	663 000 4272	SLIDE LEVER	1
17	663 000 3848	CASE COVER FRONT	1	66	663 000 4289	WHEEL HOLDER FRONT (NN-B)	1
18	663 000 3855	PACKING L=18	1	67	663 000 4296	WHEEL SMALL (NN-B)	2
19	663 000 3862	PACKING L=159	1	68	663 000 4302	HOLDER PLATE	2
20	663 000 3879	PACKING L=26	1	69	663 000 4319	SHAFT FRONT	1
21	663 000 3886	PACKING L=274	1	70	663 000 4326	PACKING L=179	1
22	663 000 2582	BELT	1	71	663 000 4333	PACKING L=322	2
23	663 000 3893	BELT COVER FRONT	1	72	663 000 2612	LEAF SPRING D	1
24	663 000 3909	ROTARY BRUSH COMP.	1	73	663 000 4340	AIR SPREADER (BOTTOM PLATE FRONT)	2
25	663 000 3916	AIR OUTLET PIPE	1	74	663 000 4357	BOTTOM PLATE FRONT (B-551)	1
26	663 000 3923	MOTOR CUTHION REAR	1	75	663 000 2650	LEVER	1
\triangle 27	663 000 3930	MOTOR COMP. (AC 120 V)	1	76	663 000 2568	SCREW	1
\triangle 28	663 000 0298	CARBON BRUSH ASSEMBLY	2	77	663 000 4364	CONNECTION PIPE (NN-B)	1
29	663 000 3947	MOTOR CUTHION FRONT	1	78	663 000 2476	CREVICE TOOL (NN-B)	1
30	663 000 3954	ROTARY HOLDER A	1	79	663 000 4371	UPHOLSTERY BRUSH ASSEMBLY	1
31	663 000 3961	ROTARY PIPE A	1	80	663 000 4388	UPHOLSTERY BRUSH ASSEMBLY (ETIQUETTE)	1
32	663 000 3978	ROTARY HOLDER B	1	81	663 000 0892	DUSTER ARM	1
33	663 000 3985	AIR INLETE COVER BASE	1	82	663 000 4395	SUCTION HOSE COMP.	1
34	663 000 3992	AIR SPREADER (AIR INLETE COVER BASE)	1				
\triangle 35	663 000 4005	CORD ASSEMBLY (WHITE) L=700	1				
\triangle 36	663 000 4012	CORD ASSEMBLY (BLACK) L=600	1				
37	663 000 4029	ROTARY HOLDER C	1				
38	663 000 0076	SCREW (4X16)	1				
39	663 000 4036	HOLDER PLATE	1				
40	663 000 4043	ROTARY PIPE B	1				
41	663 000 4050	CONNECTOR BODY (PLUG)	1				
42	663 000 4067	ROTARY PIPE COVER	1				
43	663 000 0847	SCREW (4X16)	13				
44	663 000 4074	PEDAL LEFT (NN-B)	1				
45	663 000 4081	SHAFT A	1				
46	663 000 4098	TORSION SPRING A	1				
47	663 000 4104	RING E4	1				
48	663 000 4111	PEDAL HOLDER A	1				
49	663 000 4128	NAME PLATE	1				
	663 000 4135	BOTTOM PLATE REAR (B-551)	1				

COLOR CODE:N3-99T(SILVER),B-551(BLUE),PB-102(PURPLE),N1-233/N1-249/N1-251(GRAY),NN-B(BLACK)

For Parts or Service Contact
SANYO FISHER SERVICE CORPORATION.
21605 Plummer Street,
Chatsworth, CA 91311

Free Manuals Download Website

<http://myh66.com>

<http://usermanuals.us>

<http://www.somanuals.com>

<http://www.4manuals.cc>

<http://www.manual-lib.com>

<http://www.404manual.com>

<http://www.luxmanual.com>

<http://aubethermostatmanual.com>

Golf course search by state

<http://golfingnear.com>

Email search by domain

<http://emailbydomain.com>

Auto manuals search

<http://auto.somanuals.com>

TV manuals search

<http://tv.somanuals.com>