

## PARTS LIST

## Vacuum Cleaner

SC-X1000P (U.S.A.)

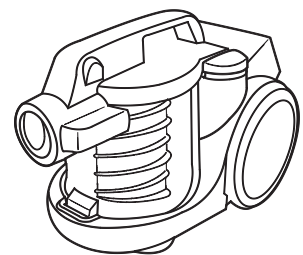
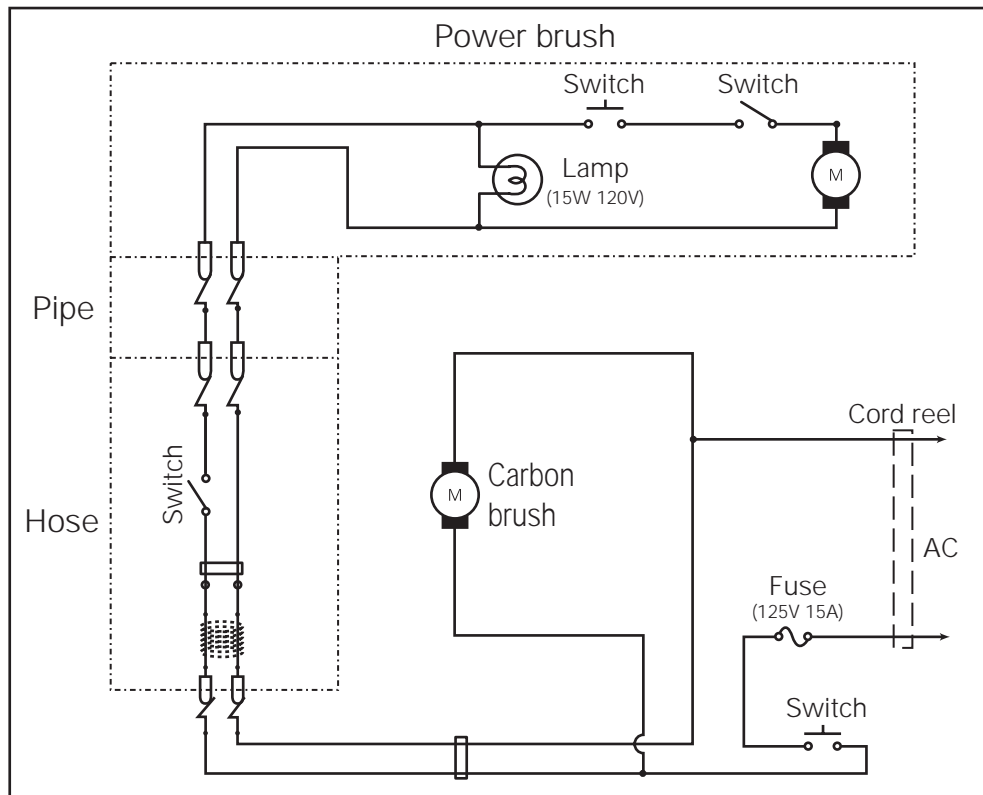
### Specifications

Power source	: AC 120 V 60 Hz
Power consumption	: 12 A
Motor revolution	: 35,000 r.p.m.
Vacuum	: 22,540 Pa
Dimensions	: 480 x 299 x 330 mm
L X W X H	( 18 - 28/32" x 11 - 24/32" x 12 - 31/32" )
Net weight	: 7 Kg ( 15 lbs 9 ozs )
Attachment	: Suction hose, Power head, Connection pipe, Crevice tool, Upholstery tool, Duster arm



PRODUCT CODE NO.

1 - 326 752 02 ( S )

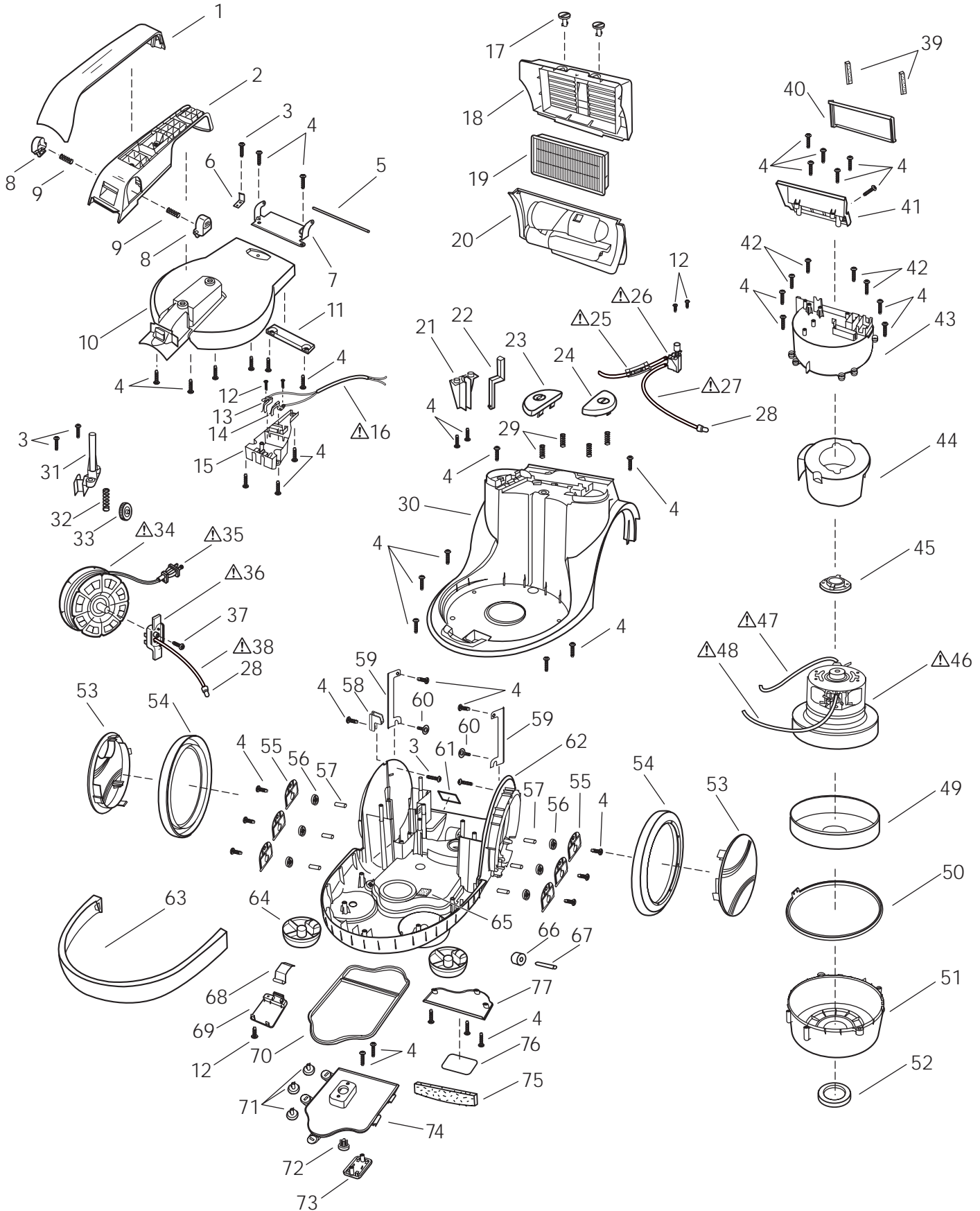
### Wiring Diagram



# Exploded View (Main unit)

NOTE: The parts marked with  have special characteristics of safety, if replace the  mark parts, use only SANYO specified parts.

SC-X1000P (U.S.A.)



Parts List  
(Main unit)

NOTE: The parts marked with  $\triangle$  have special characteristics of safety,  
if replace the  $\triangle$  mark parts,use only SANYO specified parts.

SC-X1000P (U.S.A.)

Key No.	Parts No.	Description	Q'ty	Key No.	Parts No.	Description	Q'ty
1	663 006 9714	HANDLE UPPER (N3-99T)	1	50	663 006 6751	MOTOR BASE PACKING (N1-233)	1
2	663 006 6492	HANDLE LOWER (N1-233)	1	51	663 006 6768	MOTOR CUSHION COVER (NATURAL)	1
3	663 000 0076	SCREW (4X16)	5	52	663 000 9567	MOTOR CUSHION OUTER	1
4	663 000 0847	SCREW (4X16)	44	53	663 006 6775	WHEEL CAP (N3-99T)	2
5	663 006 6508	HINGE PIN	1	54	663 006 6782	WHEEL REAR COMP. (N1-248)	2
6	663 006 6515	HINGE SPRING	1	55	663 005 7735	HOLDER PLATE (N1-233)	6
7	663 006 6522	HINGE	1	56	663 005 7728	WHEEL SMALL (N1-233)	6
8	663 006 9721	CRAMP LEVER (NN-B)	2	57	663 005 7711	SHAFT WHEEL	6
9	663 006 6546	CRAMP SPRING (HANDLE)	2	58	663 006 6799	CASE COVER (REEL SHAFT)(N1-233)	1
10	663 006 6553	CASE COVER (N3-99T)	1	59	663 006 6805	METAL COVER	2
11	663 006 6560	SUPPLEMENT COVER UPPER	1	60	663 006 6812	SCREW (4X17)	2
12	663 000 8263	SCREW (3X12)	5	61	663 000 5125	CAUTION LABEL	1
13	663 006 9738	JOINT SPRING RIGHT	1	62	663 006 9851	CASE LOWER (N1-248)	1
14	663 006 9745	JOINT SPRING LEFT	1	63	663 006 6836	CASE BUMPER (N1-248)	1
15	663 006 9752	CORD COVER (N1-233)	1	64	663 006 6843	CASTER (N1-248)	2
$\triangle$ 16	663 006 9769	OTHER STANDARD CORD	1	65	663 006 9868	AIR SPREADER	1
17	663 006 6577	CRAMP HOOK (N1-233)	2	66	663 000 8225	WHEEL SMALL (NN-B)	1
18	663 006 7284	AIR OUTLET OUTER (N3-99T)	1	67	663 000 8218	WHEEL SHAFT	1
19	663 006 7291	OUTLET FILTER ASSEMBLY	1	68	663 006 6850	CORD INLET COVER SMALL	1
20	663 006 6607	TOOL STORAGE (N3-99T)	1	69	663 006 6867	CORD INLET COVER (N1-248)	1
21	663 000 9499	BRAKE ARM BRACKET (N1-233)	1	70	663 006 6874	BOTTOM PACKING (N1-233)	1
22	663 006 6614	REEL KNOB (N1-233)	1	71	663 006 6881	CRAMP HOOK (N1-248)	3
23	663 006 9776	REEL BUTTON (NN-B)	1	72	663 000 3312	TRANSMISSION ASSEMBLY	1
24	663 006 9783	SWITCH BUTTON (NN-B)	1	73	663 006 6898	TRANSMISSION COVER (N1-248)	1
$\triangle$ 25	663 000 9451	FUSE ASSEMBLY (125V 15A)	1	74	663 006 6904	CASE LOWER BOTTOM LARGE	1
$\triangle$ 26	663 000 2896	SWITCH	1	75	663 006 6911	AIR INLET FILTER (GRAY)	1
$\triangle$ 27	663 006 9790	CORD ASSEMBLY (BLACK) L=300	1	76	663 006 9875	NAME PLATE	1
28	663 000 2193	WIRE CONNECTOR (CE-530)	2	77	663 006 6935	CASE LOWER BOTTOM SMALL	1
29	663 006 6645	HELICAL SPRING	4				
30	663 006 6652	CASE UPPER (N3-99T)	1				
31	663 000 9628	BRAKE ARM (N1-233)	1				
32	663 000 9611	BRAKE SPRING	1				
33	663 000 0236	BRAKE ROLLER ASSEMBLY B	1				
$\triangle$ 34	663 006 9806	CORD REEL COMP. INCL/P.CORD	1				
$\triangle$ 35	663 000 8034	POWER CORD (U2)	1				
$\triangle$ 36	663 005 5557	REEL SUPPORTER ASSEMBLY	1				
37	663 005 0378	SCREW (TORX SCREW)	1				
$\triangle$ 38	663 006 9813	CORD ASSEMBLY (WHITE)	1				
39	663 006 6683	POLYURETHANE FORM	2				
40	663 006 6690	AIR OUTLET PACKING (N1-233)	1				
41	663 006 6706	AIR OUTLET INNER (N1-233)	1				
42	663 000 0243	SCREW (4X20)	4				
43	663 006 6713	MOTOR BASE (NATURAL)	1				
44	663 006 6720	SILENCER PIPE (NATURAL)	1				
45	663 006 6737	MOTOR CUSHION REAR (NN-B)	1				
$\triangle$ 46	663 006 9820	MOTOR COMP. (AC 120 V)	1				
$\triangle$ 47	663 000 0298	CARBON BRUSH ASSEMBLY	2				
$\triangle$ 48	663 006 9837	CORD ASSEMBLY (WHITE) L=400	1				
$\triangle$ 49	663 006 9844	CORD ASSEMBLY (BLACK) L=450	1				
	663 005 6486	MOTOR CUSHION FRONT	1				

COLOR CODE:N3-99T(SILVER),N1-233/N1-248(GRAY),NN-B(BLACK)



Parts List  
(Dust box)

SC-X1000P (U.S.A.)

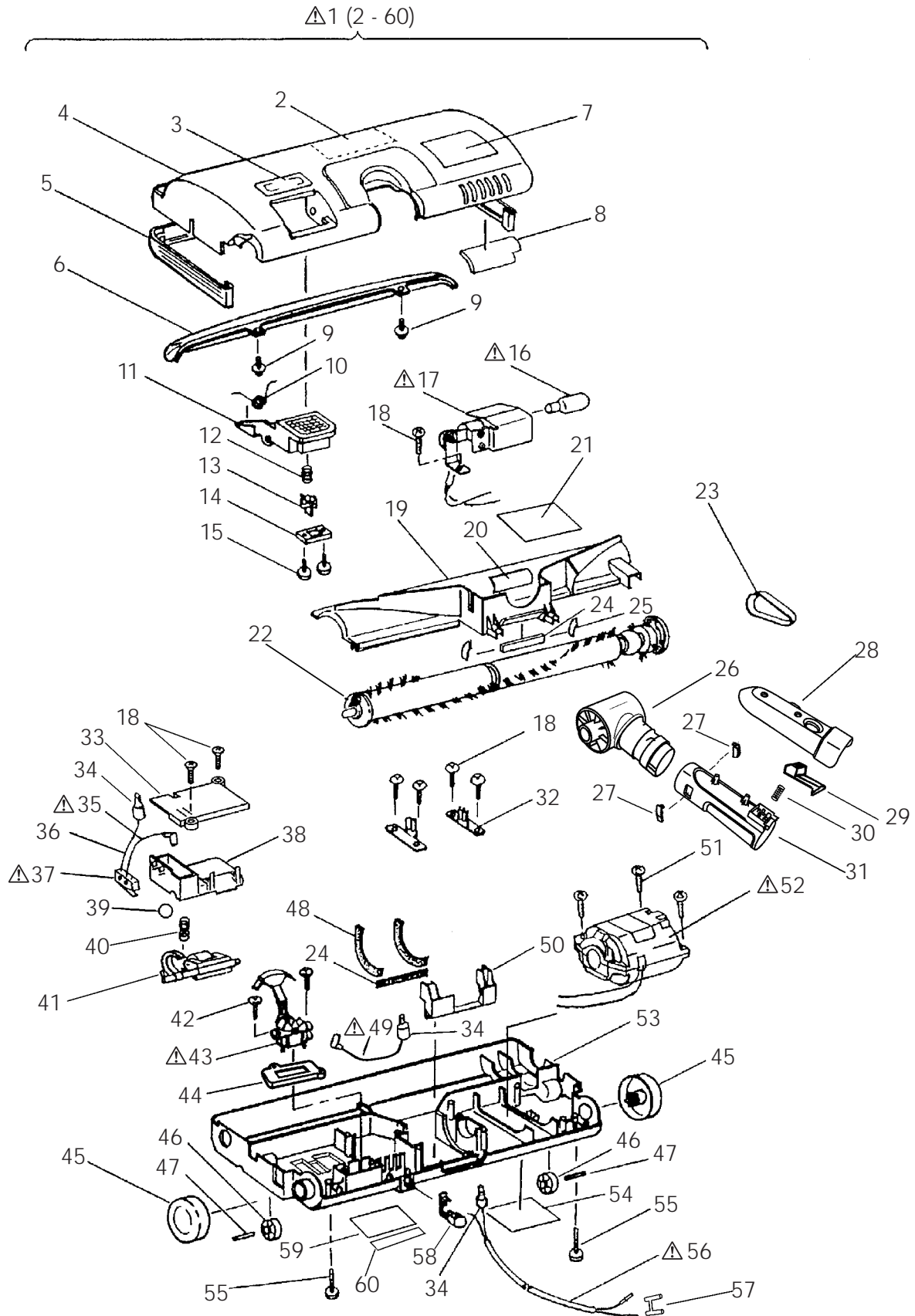
Key No.	Parts No.	Description	Q'ty	Key No.	Parts No.	Description	Q'ty
1	663 006 9882	DUST BOX (B-552)	1	51	663 005 4772	DUST FILTER ASSEMBLY (N1-233)	1
2	663 006 9899	ORNAMENT PLATE (NN-B)	1	52	663 006 7178	DUST FILTER PACKING (N1-233)	1
3	663 006 9905	GEAR C (NN-B)	1	53	663 006 7185	DUST FILTER COVER (N1-233)	1
4	663 006 9912	SHIELD PLATE	1	54	663 000 3640	PACKING (DUST FILTER COVER)	1
5	663 006 9929	COLLECTING SHOE LEFT	1				
6	663 006 9936	COLLECTING SHOE RIGHT	1				
7	663 000 0847	SCREW (4X16)	18				
8	663 006 6980	COLLECTING SHOE HOLDER	1				
9	663 000 9239	SCREW (4X10)	1				
10	663 006 9943	GEAR A (NN-B)	1				
11	663 006 6997	CRAMP HOOK COVER (B-552)	1				
12	663 006 9950	CRAMP BUTTON (NN-B)	1				
13	663 006 7017	CRAMP SPRING (DUST)	1				
14	663 006 7024	CRAMP SPRING	2				
15	663 006 9967	CRAMP HOOK STOPPER (NN-B)	2				
16	663 006 9974	LEAD WIRE (WHITE) L=250	1				
17	663 006 9981	LEAD WIRE (BLACK) L=250	1				
18	663 000 7709	COLLECTING SHOE	2				
19	663 000 2872	SCREW (3X10)	2				
20	663 000 7716	SLIP RING CLEANER	2				
21	663 000 5880	SCREW	1				
22	663 006 9998	AIR INLET (N3-99T)	1				
23	663 007 0000	BASE HOLDER (N1-233)	1				
24	663 000 9796	SLIP RING BASE UPPER	1				
25	663 000 7655	JOINT SPRING C	2				
26	663 000 9819	SLIP RING BASE LOWER	1				
27	663 000 7679	SLIP RING	2				
28	663 000 7686	AIR INLET PACKING	1				
29	663 000 0243	SCREW (4X20)	3				
30	663 007 0017	FRONT COVER (N3-99T)	1				
31	663 006 7079	DUST BOX HANDLE LOWER	1				
32	663 007 0024	BYPASS PACKING (N1-233)	1				
33	663 006 7093	BYPASS COVER (N1-233)	1				
34	663 006 7109	AIR INLET PACKING (N1-233)	1				
35	663 000 3046	HELICAL SPRING (CRAMP)	1				
36	663 007 0031	CRAMP LEVER (DUST)	1				
37	663 007 0048	CRAMP HOOK (DUST)(NN-B)	1				
38	663 000 2957	CRAMP SPRING A	1				
39	663 006 7116	CAUTION LABEL	1				
40	663 005 4703	CRAMP HOLDER (N1-233)	1				
41	663 007 0055	GEAR B (NN-B)	1				
42	663 000 2759	SCREW (4X14)	1				
43	663 006 7130	PACKING A (N1-233)	1				
44	663 007 0062	PRE FILTER ASSEMBLY (NN-B)	1				
45	663 000 3688	PACKING (PRE FILTER ASSEMBLY LOWER)	1				
46	663 006 7154	DUSTER ARM	4				
47	663 007 0079	DUSTER HOLDER (NN-B)	1				
48	663 005 4758	PACKING (DUST FILTER ASSEMBLY) UPPER	1				
49	663 000 3503	PACKING (DUSTER FRAME)	1				
50	663 006 7161	DUSTER FRAME (N1-233)	1				

COLOR CODE:N3-99T(SILVER),B-552(BLUE),N1-233(GRAY),NN-B(BLACK)

Exploded View  
(Power brush)

NOTE: The parts marked with  $\triangle$  have special characteristics of safety,  
if replace the  $\triangle$  mark parts, use only SANYO specified parts.

SC-X1000P (U.S.A.)



Parts List  
(Power brush)

NOTE: The parts marked with  $\triangle$  have special characteristics of safety,  
if replace the  $\triangle$  mark parts,use only SANYO specified parts.

SC-X1000P (U.S.A.)

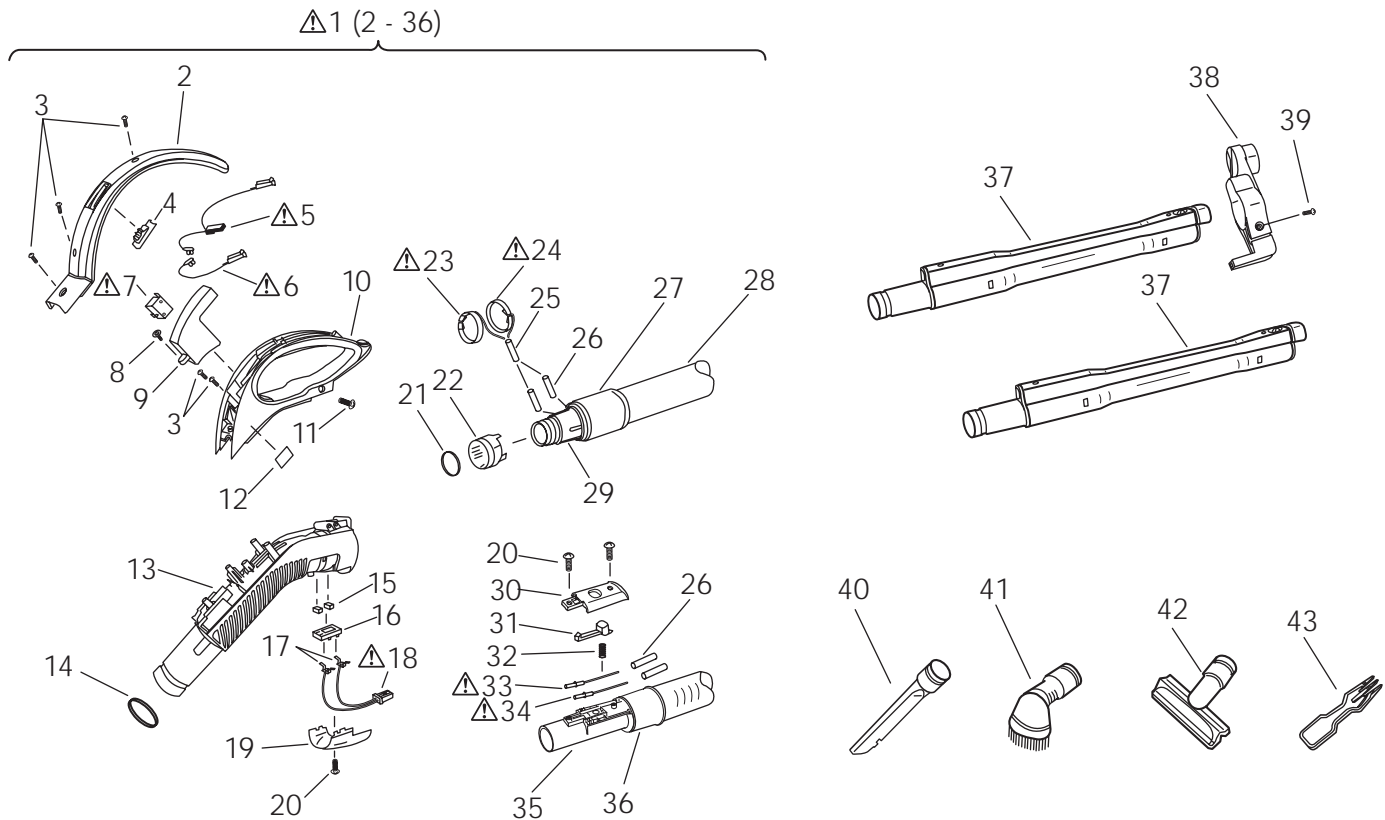
Key No.	Parts No.	Description	Q'ty	Key No.	Parts No.	Description	Q'ty
$\triangle$ 1	663 007 0086	POWER BRUSH COMP. KEYNO,2-60	1	51	663 000 9000	SCREW	3
2	663 000 8621	CASE CUSHION	1	$\triangle$ 52	663 007 0185	AC MOTOR (AC 120 V)	1
3	663 007 0093	SWITCH ORNAMENT (NN-B)	1	53	663 000 9024	CASE LOWER (NN-B)	1
4	663 007 0109	CASE UPPER (N3-99T)	1	54	663 000 9062	CAUTION LABEL A	1
5	663 007 0116	BUMPER (NN-B)	1	55	663 000 9079	SCREW	2
6	663 000 8669	LENS (N3-78)	1	$\triangle$ 56	663 007 0192	CORD ASSEMBLY	1
7	663 000 8676	CAUTION LABEL C	1	57	663 007 0208	PIN SLEEVE (N1-233)	1
8	663 000 8683	POLYURETHANE FORM	1	58	663 000 9093	CORD BUSHING (NN-B)	1
9	663 000 8690	SCREW	2	59	663 000 9109	CAUTION LABEL	1
10	663 000 8706	TORSION SPRING	1	60	663 007 0215	CAUTION LABEL(E)	1
11	663 000 8713	SWITCH BUTTON (NN-B)	1				
12	663 000 8720	SWITCH SPRING	1				
13	663 000 8737	MOVABLE REED (NN-B)	1				
14	663 000 8744	MOVABLE REED BASE (NN-B)	1				
15	663 000 8751	SCREW	2				
$\triangle$ 16	663 000 3398	LAMP (15W 120V)	1				
$\triangle$ 17	663 000 8768	LAMP HOLDER ASSEMBLY	1				
18	663 000 8775	SCREW	7				
19	663 000 8782	ROTARY PIPE COVER (N5-23)	1				
20	663 000 8799	SHIELD SHEET	1				
21	663 007 0123	CAUTION LABEL(E)	1				
22	663 006 8670	ROTARY BRUSH COMP.	1				
23	663 000 8829	BELT	1				
24	663 000 8836	ROTARY SEAL C	2				
25	663 000 8843	ROTARY SEAL B	2				
26	663 007 0130	ROTARY PIPE (N1-233)	1				
27	663 007 0147	BEND SET PIECE (N1-233)	2				
28	663 007 0154	BEND COVER	1				
29	663 007 0161	CRAMP HOOK (NN-B)	1				
30	663 000 8294	CRAMP SPRING	1				
31	663 007 0178	BEND	1				
32	663 000 8973	ARM HOLDER	2				
33	663 000 8850	CASE COVER (NN-B)	1				
34	663 000 0700	WIRE CONNECTOR (CE-230)	3				
$\triangle$ 35	663 000 8867	CORD ASSEMBLY (WHITE) L=115	1				
36	663 000 8874	LEAD WIRE (BLACK) L=130	1				
$\triangle$ 37	663 000 8881	MICRO SWITCH	1				
38	663 000 8898	SWITCH HOLDER (NN-B)	1				
39	663 000 8904	STEEL BALL	1				
40	663 000 8911	HELICAL SPRING	1				
41	663 000 8928	SWITCH LEVER ASSEMBLY	1				
42	663 000 8263	SCREW (3X12)	2				
$\triangle$ 43	663 000 8935	SWITCH ASSEMBLY A	1				
44	663 000 8942	SWITCH BRACKET (NN-B)	1				
45	663 000 9031	WHEEL REAR (NN-B)	2				
46	663 000 9048	WHEEL FRONT (NN-B)	2				
47	663 000 9055	SHAFT	2				
48	663 000 8959	ROTARY SEAL A	2				
$\triangle$ 49	663 000 8966	CORD ASSEMBLY (BLACK) L=75	1				
50	663 000 8997	CORD INLET COVER (NN-B)	1				

COLOR CODE:N3-99T(SILVER),B-552(BLUE),N1-233/N3-78/N5-23(GRAY),NN-B(BLACK)

# Exploded View (Attachment)

NOTE: The parts marked with  $\triangle$  have special characteristics of safety,  
if replace the  $\triangle$  mark parts, use only SANYO specified parts.

SC-X1000P (U.S.A.)



## Parts List

Key No.	Parts No.	Description	Q'ty	Key No.	Parts No.	Description	Q'ty
$\triangle$ 1	663 007 0222	SUCTION HOSE COMP. KEYNO,2-36	1	$\triangle$ 23	663 000 8447	SLIP RING ASSEMBLY A(RED) L=90	1
2	663 007 0239	CONTR SWITCH CASE (N3-99T)	1	$\triangle$ 24	663 000 8454	SLIP RING ASSEMBLY B(WHITE) L=70	1
3	663 000 8263	SCREW (3X12)	5	25	663 000 8461	TUBE (L=40)	1
4	663 000 8270	SWITCH LEVER (NN-B)	1	26	663 000 8478	TUBE	4
$\triangle$ 5	663 007 0246	CONNECTOR HOUSING ASSEMBLY B	1	27	663 001 0136	SUCTION HOSE COVER C	1
$\triangle$ 6	663 007 0253	CORD ASSEMBLY (BLACK) L=90	1	28	663 001 0143	SUCTION HOSE (N1-52)	1
$\triangle$ 7	663 000 8324	MICRO SWITCH	1	29	663 001 0150	HOSE JOINT PIPE C (N1-233)	1
8	663 000 0335	SCREW (4X16)	1	30	663 001 0167	HOSE HOOK COVER (N1-233)	1
9	663 000 8331	SWITCH BASE	1	31	663 001 0174	HOSE HOOK (N1-233)	1
10	663 001 0082	GRIP (N1-233)	1	32	663 000 0519	HOSE HOOK SPRING	1
11	663 000 0076	SCREW (4X16)	2	$\triangle$ 33	663 000 8539	CORD ASSEMBLY (WHITE)	1
12	663 007 0260	CAUTION LABEL(E)	1	$\triangle$ 34	663 007 0291	CORD ASSEMBLY (BLACK)	1
13	663 007 0277	HOSE JOINT PIPE B (N1-233)	1	35	663 001 0181	HOSE JOINT PIPE A (N1-233)	1
14	663 007 0284	PIPE PACKING (NN-B)	1	36	663 001 0198	SUCTION HOSE COVER	1
15	663 000 8379	SLIP RING CLEANER	2	37	663 007 0307	CONNECTION PIPE ASSEMBLY A	2
16	663 001 0112	COLLECTING SHOE HOLDER	1	38	663 007 0314	PIPE RETAINER (NN-B)	1
17	663 000 8393	COLLECTING SHOE B	2	39	663 000 0243	SCREW (4X20)	1
$\triangle$ 18	663 000 8300	CONNECTOR HOUSING ASSEMBLY B	1	40	663 006 5471	CREVICETOOL (N1-233)	1
19	663 001 0129	COLLECTING SHOE COVER	1	41	663 006 5488	UPHOLSTERY BRUSH ASSEMBLY (N1-233)	1
20	663 005 6691	SCREW (3X8)	3	42	663 006 5495	UPHOLSTERY BRUSH ASSEMBLY (ETIQUETTE)	1
21	663 000 8423	JOINT PIPE PACKING	1	43	663 006 3729	DUSTER ARM (NN-B)	1
22	663 000 8430	SLIP RING BASE	1		663 007 0321	INSTRUCTION MANUAL	1

COLOR CODE:N3-99T(SILVER),N1-52/N1-233(GRAY),NN-B(BLACK)

For Parts or Service Contact  
SANYO FISHER SERVICE CORPORATION.  
21605 Plummer Street,  
Chatsworth, CA 91311



## Free Manuals Download Website

<http://myh66.com>

<http://usermanuals.us>

<http://www.somanuals.com>

<http://www.4manuals.cc>

<http://www.manual-lib.com>

<http://www.404manual.com>

<http://www.luxmanual.com>

<http://aubethermostatmanual.com>

Golf course search by state

<http://golfingnear.com>

Email search by domain

<http://emailbydomain.com>

Auto manuals search

<http://auto.somanuals.com>

TV manuals search

<http://tv.somanuals.com>