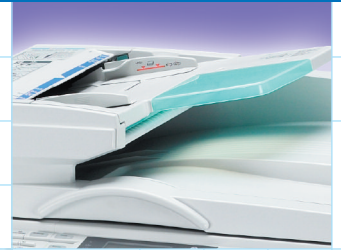


Savin  
8016/8020/8020d

> DIGITAL IMAGING SYSTEMS

What you  
need to get  
your work done.



Savin 8016/8020/8020d



**savin**®

# Savin 8016/8020/8020d. Copying, printing

The Savin 8016/8020/8020d Digital Imaging Systems can form the core of your communications network. Fast and efficient, they have all the capabilities you need – copier, printer, scanner, fax – to make your workload easier and help you accomplish the essential document management tasks of your organization.



## Fast, Efficient, Reliable Copying

When you want copies, you want them now, and the Savin 8016/8020/8020d systems deliver – producing up to 21 copies per minute at 600 dpi. And with a warm-up time of up to just 30 seconds and first-copy-out speed of 6.5 seconds, you won't have to wait for that critical first print. All in all, the Savin 8016/ 8020/8020d have the speed, quality and reliability to support your needs.

## Easy-To-Network Printing

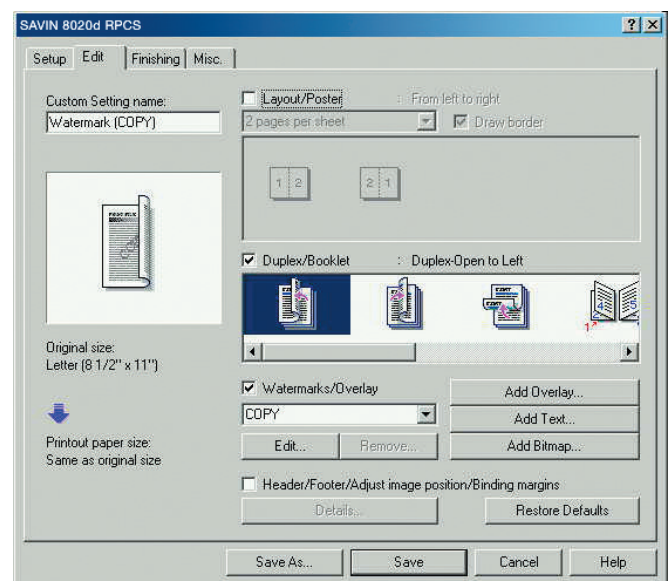
The Savin 8016/8020/ 8020d systems are fully loaded with everything you need to connect seamlessly to your network or directly



to a PC, including 10/100BaseT Ethernet and a USB 2.0 Interface. Or you can forget the connections altogether and use the Wireless LAN or Bluetooth options to let your teams work wireless.

The systems can support all of the most common business applications your office is likely to use, via the standard PCL 5e/6 print driver or the optional Adobe® PostScript® 3™. What's more, Savin's Refined Print Command Stream (RPCS™) – an icon-based print driver – allows you to save

various printer settings for different jobs and store them under a single icon, reducing your most complex print jobs to a one-click proposition.



# ting, scanning, faxing – it's all done here.



## Scanning For Instant Hardcopy Distribution

Once you've used the scanner on the Savin 8016/8020/8020d, you'll wonder how you ever got along without it. Scan your documents exactly as if you were making a copy, and send the digitized files directly to an e-mail address to anyone on your network or over the Internet. It's an easier and much more versatile way to distribute your hardcopy documents than sending a fax – and much faster.

## Scan-to-Email



## Take Faxing To A Whole New Level

Savin 8016/8020/8020d systems turn faxing into an even more powerful communications vehicle than ever. And take full advantage of your Internet and LAN connections to dramatically cut costs.

- Internet Fax lets you send scanned documents directly to e-mail addresses or over the Internet to an Internet-enabled fax, eliminating both the paper costs of standard faxing and long-distance phone charges.
- LAN-Fax lets you send faxes directly from your PC, maximizing your investment in your Local Area Network and reducing paper usage.
- And for organizations that send faxes out in quantity, the Super G3 Modem lets you fire them off in as little as three seconds per page.

## Time-Saving Network Management

Let's face it, you don't have time to patrol your office checking on the status of your networked systems. That's why the Savin 8016/8020/8020d systems have what all time-pressed network administrators need: remote monitoring.

Web SmartDeviceMonitor and Web Image Monitor give you the power to check the status of your system right from your desktop with a standard Web browser. The result: you not only stay on top of network functionality and get more work done, but your workgroups maintain uninterrupted efficiency.



*Recipient's PC*

Send documents from the 8016/8020/8020d with Embedded Scan-to-Email. Just scan hardcopy documents and then immediately distribute them to multiple e-mail addresses, saving both time and money.





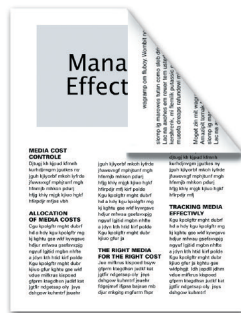
## Easy-To-Use Control Panel

Access advanced digital features right from the control panel. Easily navigate copy, print, scan, fax and document management functions with the 4-line, 27-digit backlit display and 4 cursor keys.

## Keeping Costs Down, Productivity Up

Because the Savin 8016/8020/8020d systems combine four functions into a single unit, they help reduce the cost of everything from maintenance, to supplies, to office space. But these systems go even further by helping you to work more efficiently and cut the overall, everyday costs of operation.

- Cut both paper usage and print times in half with automatic duplexing (available on the Savin 8020d with the optional ARDF), which lets you print or copy on both sides of a page.



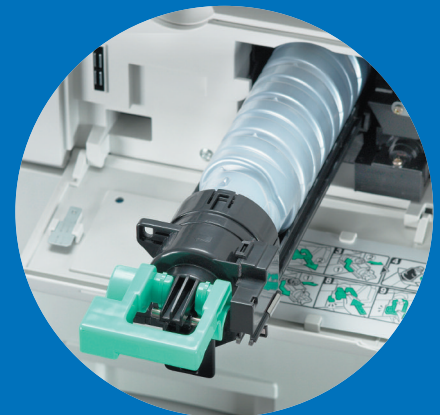
- Work for longer uninterrupted stretches with the generous paper capacity, and use the 100-sheet bypass tray to print envelopes.
- Cut scanning time with the Automatic Document Feeder and Automatic Reversing Document Feeder, which can scan multiple originals up to 11" x 17".
- Reduce costly errors and cut paper waste with automatic image rotation, which rotates your scanned images to match the orientation in your paper trays.
- Eliminate time-consuming hand collating with electronic rotate sorting.



Automatic Duplexing (8020d with optional ARDF) lets you copy and print two-sided documents – up to 11" x 17" – which significantly reduces paper, hardcopy storage and postage costs.



Easily identify inbound faxes and keep them separated from print and copy output with the One-Bin Tray (available on the 8020/8020d).



Toner replacement is a snap thanks to the 8016/8020/8020d's dual component design.

Select the configuration that meets the needs of your office



**8016sp:** For efficient document management in a space-saving design.

**8020sp:** For productive document management, including a One-Bin Tray.

**8020dsp:** For total document management, including a One-Bin Tray and Duplexing capability.

# Savin 8016/8020/8020d

# Savin 8016/8020/8020d



## Control Panel

Easy-to-use Control Panel makes operation intuitive.

## One-Bin Tray

Additional 100-sheet Output Tray separates copy output from prints or faxes and lights up when output is present. (Available on 8020/8020d).

## Paper Trays

Standard 1 or 2 x 250-sheet Paper Trays accommodate paper weights up to 24 lb. – ensuring long print runs between paper changes.

## Storage Cabinet

Spacious Storage Cabinet keeps supplies handy.

## Document Feeders

Automatic Document Feeder (30-sheet capacity) or Automatic Reversing Document Feeder (50-sheet capacity) quickly processes multi-page originals.

## Indicator Light

Illuminates when documents are in the tray, informing you immediately when your job is completed.

## Bypass Tray

100-sheet Bypass Tray allows quick, easy paper stock changes.

## Optional Paper Trays

1 or 2 x 500-sheet Paper Trays (for a total capacity of up to 1,350 or 1,600 sheets) further extend working time between paper replenishment and hold up to five different sizes or orientations of paper.

## Don't Forget The Environment

It's everyone's business to lessen our impact on the environment. The Savin 8016/8020/8020d digital imaging systems do their part:

- Quick Start Up (QSU) Technology creates recovery times of just 10 seconds, which maximizes time in Energy Saver Mode and keeps energy costs to a minimum.
- Consolidation of functions – copy, print, scan, fax – minimizes the space you need for your document management systems.



## Choose Savin

Savin offers the broadest range of digital imaging systems in the industry. Our technology is proven, reliable and award winning. Our document management expertise is second to none. And our consultative approach can help you fully exploit the potential of digital technology.

For more information, contact your authorized Savin dealer.



# Savin 8016/8020/8020d Specifications

## ENGINE SPECIFICATIONS

<b>Imaging Process</b>	Dry Process (dual component)
<b>Reading Element</b>	Solid State Scanner
<b>Configuration</b>	Console
<b>Resolution</b>	600 x 600 dpi
<b>Grayscale</b>	256 Gradation Levels
<b>Paper Supply</b>	250-Sheet Tray (8016) 250 Sheets x 2 Trays (8020/8020d)
<b>Bypass</b>	100 Sheets, #10 Envelopes
<b>Paper Weight</b>	16 to 24 lb. Bond (Paper Trays) 16 to 42 lb. Bond (Bypass Tray)
<b>Output Tray Capacity</b>	250 Sheets
<b>Power Source</b>	120V/60Hz/15A
<b>Dimensions (WxDxH)</b>	21.65" x 22.36" x 16.54" (8016) 21.65" x 22.36" x 21.97" (8020) 23.11" x 22.36" x 21.97" (8020d)
<b>Weight</b>	78 lbs. (8016) 96 lbs. (8020) 103 lbs. (8020d)

## COPIER SPECIFICATIONS

<b>Warm Up Time (Basic/spf)</b>	15 Seconds/30 Seconds
<b>First-Copy Speed</b>	6.5 Seconds
<b>Multi-Copy Speed</b>	16 copies/minute (8016) 20 copies/minute (8020) 21 copies/minute (8020d)
<b>Quantity Indicator</b>	1-99
<b>Original Type</b>	Sheet/Book
<b>Original Size</b>	Up to 11" x 17"
<b>Copy Size</b>	5.5" x 8.5" to 11" x 17"
<b>Reproduction Ratios</b>	50%; 65%; 78%; 93%; 121%; 129%; 155%
<b>Zoom</b>	50% to 200% in 1% increments
<b>Memory Capacity</b>	16 MB

## NETWORK PRINTER SPECIFICATIONS (Option)

<b>Print Speed</b>	16 PPM (8016) 20 PPM (8020) 21 PPM (8020d)
<b>Interface</b>	Standard Ethernet10/100BaseT Standard USB 2.0 Optional IEEE1394 Optional IEEE802.11b Wireless LAN Optional Bluetooth Optional IEEE1284 Parallel
<b>Resolution</b>	600 x 600 dpi
<b>Network Protocol</b>	TCP/IP; IPX/SPX; AppleTalk (Auto switching); NetBEUI*
<b>CPU Speed</b>	240 MHz
<b>Memory Capacity</b>	192 MB shared with copier, scanner and fax
<b>PDL</b>	Standard RPCS, PCL 5e/6 Optional Adobe PostScript 3
<b>Network Operating System</b>	Windows 9x, Me, NT4.0, 2000, 2003, XP, Macintosh 8.6-OSX 10.1 or later, UNIX

\*SmartDeviceMonitor for client is required.

## PRINTER FEATURES

Automatic Tray Selection  
Auto Tray Switching  
Envelope Printing  
Layout  
Paper Size Settings  
Watermarks

## NETWORK SCANNER SPECIFICATIONS (Option)

<b>Scan Speed</b>	ScanRouter: 43 ipm (@ 200 dpi) TWAIN Driver: 25 ipm (@ 200 dpi)
<b>Interface</b>	Standard Ethernet 10/100BaseT Optional IEEE1394 Optional IEEE802.11b Wireless LAN
<b>Optical Resolution</b>	600 dpi
<b>Compression</b>	Binary: MH (default), MR, MMR
<b>Maximum Original Size</b>	11" x 17"
<b>Network Protocol</b>	TCP/IP
<b>Memory Capacity</b>	192 MB shared with copier, printer and fax
<b>Original Size</b>	Up to 11" x 17"
<b>File Formats</b>	TIFF; PDF

## SCANNER FEATURES

Black-and-White Scanning  
Duplex Scanning (8020d)  
Embedded Scan-to-Email  
Image Rotation  
Network TWAIN Scanning  
ScanRouter Lite

## FAX SPECIFICATIONS (Option)

<b>Circuit</b>	PSTN, PBX
<b>Compatibility</b>	ITU-T G3
<b>Modem Speed</b>	33.6 Kbps V.34 w/Auto Shift Down
<b>Transmission Speed</b>	G3; 3.0 Seconds*, **
<b>Scanning Speed</b>	1.0 Second
<b>Data Compression</b>	MH, MR, MMR, JBIG
<b>Resolution</b>	200 x 100/200/400 dpi
<b>Page Memory</b>	3 MB (240 Sheets*)
<b>Memory Backup</b>	1 Hour
<b>Quick Dials</b>	32
<b>Speed Dials</b>	150
<b>Group Dials</b>	10 (max. 100 per group)

\*Based on ITU-Test Chart #1 in standard mode.

\*\*Approximately 3 seconds per page at 33.6 Kbps is dependent on optimal line quality. Customer performance may vary by location.

## FAX FEATURES

AI Short Protocol	LAN-Fax***
Authorized Reception	Manual Reception
Auto Reduction	Page Retransmission
Batch Transmission	Parallel Memory Transmission
Battery Backup	Reception Time Printing
Dual Access	Restricted Access
Duplex Fax Transmission (8020d)	Send Later
Error Correction Mode	Serial Broadcasting
Inbound Fax Routing***	Substitute Reception
Inbound Fax (T.37)***	User Function Keys (3)

\*\*\*Requires optional all-in-one kit

## ACCESSORIES

### DF78 Automatic Document Feeder

<b>Original Size</b>	5.5" x 8.5" to 11" x 17"
<b>Original Weight</b>	14 to 28 lb. Bond
<b>Original Capacity</b>	30 Sheets
<b>Dimensions (WxDxH)</b>	21.6" x 18.5" x 3.55"
<b>Weight</b>	15.4 lbs.

### DF79 Automatic Reversing Document Feeder (8020d)

<b>Original Size</b>	5.5" x 8.5" to 11" x 17"
<b>Original Weight</b>	Simplex Original: 10 to 34 lb. Bond; Duplex Original: 14 to 28 lb. Bond
<b>Original Capacity</b>	50 Sheets
<b>Dimensions (WxDxH)</b>	21.6" x 18.5" x 5.1"
<b>Weight</b>	22.1 lbs.

### PS450 Paper Bank\*

<b>Paper Capacity</b>	500 Sheets x 2 Trays
<b>Paper Size</b>	5.5" x 8.5" to 11" x 17"
<b>Paper Weight</b>	16 to 28 lb. Bond
<b>Dimensions (WxDxH)</b>	21.6" x 20.5" x 10.6"
<b>Weight</b>	55.1 lbs.

### PS460 Paper Bank\*

<b>Paper Capacity</b>	500 Sheets x 1 Tray
<b>Paper Size</b>	5.5" x 8.5" to 11" x 17"
<b>Paper Weight</b>	16 to 28 lb. Bond
<b>Dimensions (WxDxH)</b>	21.6" x 20.5" x 5.3"
<b>Weight</b>	26.1 lbs.

### Type PT340 One-Bin Tray

<b>Paper Size</b>	5.5" x 8.5" to 11" x 17"
<b>Paper Weight</b>	16 to 28 lb. Bond
<b>Paper Capacity</b>	100 Sheets
<b>Dimensions (WxDxH)</b>	Unit: 8.5" x 18.9" x 4.1" Tray: 13.2" x 15.4" x 1.7"
<b>Weight</b>	3.5 lbs.

\*Cabinets Available

**savin**

Savin Five Dedrick Place, West Caldwell, NJ 07006

SAVIN® is a registered trademark of Ricoh Corporation. Windows® and Windows® 95/98/Me/NT4.0/2000/XP are registered trademarks of Microsoft Corporation. Macintosh®, Mac® OS and AppleTalk® are registered trademarks of Apple Computer, Inc. Adobe® and PostScript® are registered trademarks of Adobe Systems, Inc. PCL® is a registered trademark of Hewlett-Packard Company. RPCS™ is a trademark of Ricoh Company, Ltd. All other trademarks are the property of their respective owners. Print speed may be affected by network, application or PC performance. Specifications and external appearances are subject to change without notice. Products are shown with optional features.

♻️ Printed in U.S.A. on recycled paper. (S2130)



## Free Manuals Download Website

<http://myh66.com>

<http://usermanuals.us>

<http://www.somanuals.com>

<http://www.4manuals.cc>

<http://www.manual-lib.com>

<http://www.404manual.com>

<http://www.luxmanual.com>

<http://aubethermostatmanual.com>

Golf course search by state

<http://golfingnear.com>

Email search by domain

<http://emailbydomain.com>

Auto manuals search

<http://auto.somanuals.com>

TV manuals search

<http://tv.somanuals.com>