

Savin®

C6055/C7570

Color Digital Imaging System

FAST >

EASY >

COPY >

PRINT >

COLOR >



**Engineered for outstanding color
and exceptional versatility.**

Sales Information Guide

TABLE OF CONTENTS

Introduction	1
Additional Resources.....	3
Product Overview	4
Network Integration	5
Scanning and Document Management.....	6
Security.....	6
Cost Control	6
Comprehensive Finishing.....	7
Selling the C6055 and C7570	8
Ease of Use.....	9
Affordability.....	9
Keeping Color In-House	9
Product Positioning	10
Target Markets.....	12
Understanding the Light Production Market.....	13
Multifunction Review	15
Printing Functionality.....	16
Printer Drivers/Languages	16
Advanced Printing Features	18
Print Queues.....	18
Cover Printing.....	19
Chaptering.....	20
Black Overprint.....	21
Document Server Functionality	21
Scan & Send Functionality	23
Scan-to-Email.....	24
Scan to Folder FTP/SMB/NCP	26
Network TWAIN Scanning.....	28
Networking and Connectivity	30
Seamless Integration.....	30
Wireless Networking Options	30
IEEE 1284 Parallel Interface Option	32
Security and Administration	33
Hard Disk Drive Data Protection	34
System Administration.....	35
Savin Software Utilities for Document & Device Management	36
Assessing the Competition	47
System Specifications.....	49
Hardware Option Interchangeability.....	73
Consumables and Yields	74
Product Ordering Codes	74

Specifications subject to change without notice.

©2008, Savin® is a registered trademark of Ricoh Americas Corporation.

This guide is intended solely for the use and information of Ricoh Americas Corporation, its designated agents, and their employees. The information in this guide was obtained from several different sources that are deemed reliable by all industry standards. To the best of our knowledge, this information is accurate in all respects. However, neither Ricoh Americas Corporation nor any of its agents or employees shall be responsible for any inaccuracies contained herein.

Windows® and Windows® 95/98/Me/NT4.0/XP/Windows 2000 are registered trademarks of Microsoft Corporation. Macintosh®, Mac® OS, and AppleTalk® are registered trademarks of Apple Computer, Inc. Adobe® and PostScript® are registered trademarks of Adobe Systems, Inc. PCL® is a registered trademark of Hewlett-Packard Company. Ricoh® and Aficio® are registered trademarks of Ricoh Company, Ltd. RPCS™ is a trademark of Ricoh Company, Ltd. All other trademarks are the property of their respective owners and are hereby acknowledged.

All rights reserved. No part of this book may be reproduced or transmitted in any form or by any means, electronic or mechanical, including photocopying, recording, or any information storage and retrieval system, without permission in writing from the Publisher.

Savin C6055/C7570

INTRODUCTION

New product announcements give us something new to talk to customers about, and this announcement is no different. As we continue to increase the features and functionality of the products within the Savin color solutions portfolio, we are also increasing the opportunity for you to sell more within your territory by meeting a wider range of customer requirements. The new Savin C6055 and C7570 MFPs offer a new level of price/performance for workgroups and departments, and they address the growing need for affordable color in light production environments as well. This Sales Information Guide will provide you with everything you need to take advantage of this brand-new opportunity for increased sales performance.

According to current market research, the use of color in the office is growing by more than 35% annually, while black & white printing and copying only demonstrate about a 2% annual growth. IDC reports that there are over 40 million black & white laser printers installed in the U.S. alone, many of which could be upgraded to color. As price/performance continues to improve in color copying and printing devices, companies are also looking for ways to bring outsourced color printing in-house to reduce costs and to increase control over the printing process. The Savin C6055 and C7570 MFPs are designed to capitalize on all of these trends.

Savin has been a leader in affordable office color printing. From its introduction of the first color-enabled MFP and continuing through today's strong product line-up, Savin is making color printing and copying more attractive in the office environment than ever before. Clearly, our efforts have helped spur general office customers to make the transition from black & white to color documents. In short order, Savin has become a market leader in the color arena, and with the launch of the C6055 and C7570 models, we expect to continue this market leadership.

Savin is introducing the C6055 and C7570 in direct response to these customer needs for faster, more cost-effective color and streamlined in-house production of color documents. These fully-featured MFPs produce 60 and 75 ppm in black & white, respectively, and 55 and 70 ppm in color, respectively. They are intended for use in large workgroups or small departments where they can be shared by multiple users as networked printers and scanners, and as walk-up copiers and scanning stations. In most cases, the C6055 or C7570 can replace multiple existing copiers, printers, faxes and scanners, reducing the overall copy/print footprint and making device management much simpler.

The C6055 and C7570 are also ideal for light production environments that have insufficient volume to justify expensive production color devices, yet have the need to produce quality color in a staffed environment.

The C6055 and C7570 have several key competitive advantages, including:

- Fast print/copy speeds in both black & white and color
- Fast warm-up times and first copy out times
- Fast scanning speeds in both black & white and color
- A simple, intuitive user interface that makes all capabilities available with a few simple touches of the screen.
- Configurable print queues, such as the hold or locked queue, to improve document security
- Improved print quality
- A vast array of flexible and innovative finishing options
- A compact footprint that is made even smaller because there is no need for clearance behind the system
- A document server option that allows storage of documents for easy reprinting
- Wireless and Bluetooth networking options for the ultimate in ease of access, as well as a USB port for delivering files directly to the controller.

These enhanced features make the C6055 and C7570 ideal for busy office environments and they also open the door for increased market share in the growing light production market.

With the addition of the C6055 and C7570, Savin now has color-enabled solutions to meet the needs of virtually all of your customers—a range of solutions that fits every price/performance point.

In the office, it is no longer a question of whether to print in color, but rather, how to produce color documents faster and more cost-effectively while reducing the amount of color printing that needs to be outsourced. The C6055 and C7570 are perfectly positioned to meet this challenge in both the office and light production markets.

This is a great time to be selling the C6055 and C7570. All of our market research predicts that demand for these systems will be strong. How many of those placements will be yours?

Savin C6055/C7570

Additional Resources

This Sales Information Guide will serve as your definitive resource for information about the C6055 and C7570. In it, you will find information about product positioning, key features and benefits, core technologies, hardware configurations, and options, as well as suggestions for effective marketing strategies and sales tactics and complete C6055 and C7570 specifications.

To maximize the success of your sales efforts, Savin has also included a number of sales support tools with this Launch Kit. On the CD, you will find the following aids and collateral material to ensure that your C6055 and C7570 sales efforts get off to a great start:

- Product Configurator
- Frequently Asked Questions
- PowerPoint Launch Presentation
- System Options
- Product Brochures
- Product Images
- Savin Product Guide
- Operator Manuals
- Positioning Document

By putting all these pieces together, you will gain a full understanding of the value of the C6055 and C7570 and how best you can leverage them to meet your sales targets. Beyond the systems themselves, these materials will help you tailor your sales strategy and tactics to specific customers and accounts so that you can improve your close ratio and grow your sales success.

Good selling!

PRODUCT OVERVIEW

The Savin C6055 and C7570 are high-speed, color-enabled MFPs that offer high-performance copying, printing, scanning in both black & white and color, as well as optional faxing and comprehensive collating and finishing options.

The C6055 and C7570 build on the B2C concept of enabling customers to migrate more documents from black & white to color. As you know, Savin's successful B2C product strategy is designed to remove any and all objections customers have to using color in their documents. The core principles of this strategy are to offer customers a fully featured MFP with comprehensive finishing capabilities that deliver similar operating costs and a minimal incremental hardware price difference as compared to a monochrome system.

Whereas some entry-level customers have not yet explored how color fits into their document strategy, this is probably not the case with customers who are likely to purchase the C6055 and C7570. The best target customers are the ones that will have already had experience with color output, through the use of either color laser printers, dedicated color systems and/or through outsourcing to printing vendors.

As a result, the sales process can't be simpler. Your most effective approach is to present these new products as systems that deliver the performance and document handling capabilities normally only found on a high-performance monochrome systems. These systems enable customers to bring color in-house or consolidate color printing currently being produced on multiple devices into a single, versatile and cost-effective C6055 or C7570.

Meet the New C6055 and C7570

The C6055 and C7570 are Segment 4/5 color MFPs designed for intensive color and black & white usage. To satisfy mid- to high-volume customers, the C6055 outputs 55 color and 60 black & white ppm, while the C7570 outputs 70 color and 75 black & white ppm. Both machines also feature a 3,400-sheet standard paper capacity that can be increased to 7,400-sheets.



These systems are intended for workgroups and departments with 30 to 100 users who print, or would like to print, 50% to 100% of their document volume in color.

The C6055 and C7570 support nearly all of the activities required by general office users, including copying, printing, scanning, faxing and document storage. They have rapid first-copy-out times, which is important in busy, multiuser office environments. And beyond the office, their speed and quality make them ideal for the needs of the light production environment.

Savin C6055/C7570

The table below summarizes the new features and enhanced capabilities of the C6055 and C7570 that will be important in the selling process.

Capability	C6055	C7570
Output Speed B&W	60 ppm	75 ppm
Output Speed Color	55 ppm	70 ppm
First Copy Out Time B&W	5.7 seconds	4.9 seconds
First Copy Out Time Color	7.5 seconds	6.4 seconds
Fast Warm-Up Time	90 seconds	75 seconds
Scanning Speed B&W	81 ipm	81 ipm
Scanning Speed Color	69 ipm	69 ipm
Resolution	600dpi	
Scan to Destination	Scan to email/LDAP support, Scan to folder, FTP/SMB/NCP, Network TWAIN Scanning	
Document Storage	Document Server with 191.8 GB of storage	
Document Finishing	Z-Folding Option	
Post-Fuser Interposer	2-Source Cover Interposer	
Wireless connectivity	Wireless and Bluetooth connectivity options	
Power Source	120/20A/60Hz	208-240V/20A/60Hz

A summary of important features and functions follows. Full specifications are included later in this Sales Information Guide.

Network Integration

These systems offer a wide range of network connectivity options. Network printing is fully integrated into these systems, which are driven by an Intel Pentium-M 1.4GHz CPU, with 1,536MB of RAM and a two-disk array with a total of 320GB (160GB x 2) of storage capacity. Users can print documents using Savin RPCS or PCL 5c/XL (emulation) drivers or, optionally, with a true Adobe PostScript 3 driver. The C6055 and C7570 connect to the network via 10BaseT/100BaseTX/1000BaseT with full support for all major network protocols. A USB 2.0 serial interface is available for direct connection to a print server or workstations to offload large file transfers from the network, eliminating unnecessary network traffic burdens. They are also both optionally Bluetooth and wireless enabled.

Scanning and Document Management

Comprehensive scanning and document management contribute to the versatility of the C6055/C7570 series. In addition to network TWAIN scanning at 1,200dpi, users can scan documents directly into single- or multi-page PDF or TIFF formats and send them as e-mail attachments—taking advantage of support for up to five (5) registered LDAP servers to easily locate e-mail addresses in organizations of all sizes.

The C6055/C7570 series also supports Scan-to-Folder FTP/SMB server so that customers can post scanned documents on an FTP, SMB, or NCP server for easy retrieval by authorized users. System storage is also optimized when files are scanned into PDF format with a high compression ratio while maintaining the image integrity.

There is a 320GB hard disk drive, of which 191.6GB is reserved for the Document Server, which provides a huge repository for the Document Server, enabling users to locally store scanned, copied and printed files for sharing and repurposing. The Document Server can store up to 3,000 documents or 15,000 pages!

Security

Security is an integral feature of this system. To ensure that only authorized users may take advantage of the C6055/C7570 series' capabilities—as well as the stored documents—these systems feature Windows Authentication and several related security protocols.

The systems also offer hold or locked print queues for added document security. This means that files can be sent for printing from the desktop, with the user releasing the documents for printing at the machine to ensure that unauthorized users do not see or have access to sensitive materials.

Customers with extremely sensitive documents can also take advantage of the HDD Data Overwrite option to ensure that documents are only viewed by appropriate personnel and are completely erased from the system when deleted. There is also an optional Unauthorized Copy Guard Unit, and an HDD data encryption unit to ensure the security of sensitive data. Files can be scanned into encrypted PDF format for additional security.

Cost Control

To manage operating costs, your customers can restrict color output and/or access to the system by specific groups or users. Up to 500 user codes can be created.

Savin C6055/C7570

Comprehensive Finishing

The C6055/C7570 series offers comprehensive finishing options, including cover insertion and the ability to combine multiple finishing options; for example, users can configure their systems with a 9-bin mailbox on top of the saddle stitch booklet maker or the 50-sheet stapler finisher with a 3000-sheet capacity. For customers that produce longer documents, there's a 100-sheet stapler finisher with a 3,000-sheet capacity.

New to the C6055 and C7570 is a 2-Source Cover Interposer that makes it easy to load different front/back cover pages without the need to precollate them in a single bin.

Another new option available with the C6055/C7570 series is the Z-folding unit¹. This can be attached with the 100-sheet stapler Finisher or the 50-sheet staple/saddle stitch finisher.

¹Z-fold or engineering fold is primarily used to fold an 11" x 17" sheet down to 8.5" x 11"; or an 8.5" x 11" sheet down to 5.5" x 8.5" for filing.

Toner and Toner Yield

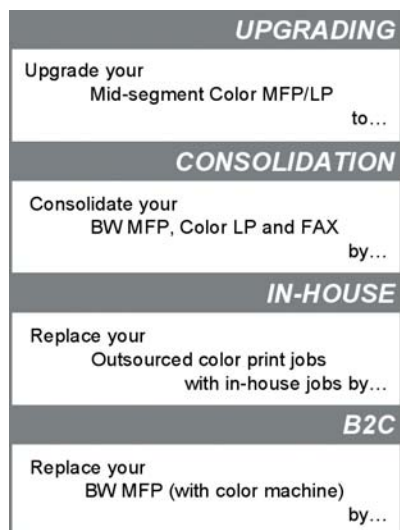
The C6055 and C7570 use four toner colors, Black, Cyan, Magenta and Yellow. Toner yields by color are indicated below.

Toner	Black	43.2K output/cartridge (A4/LT 5% coverage)
	Cyan	21.6K output/cartridge (A4/LT 5% coverage)
	Magenta	21.6K output/cartridge (A4/LT 5% coverage)
	Yellow	21.6K output/cartridge (A4/LT 5% coverage)

SELLING THE C6055 AND C7570

In selling the C6055 and C7570, your most effective strategy is to show customers how they can produce color documents more quickly and cost-effectively than is possible on a dedicated color system while still producing black & white documents at a market-leading cost with the same machine footprint. The increased capability of these MFPs also means more color printing can be brought in-house to save the time and money associated with outsourcing. Your focus will be on helping users understand how the C6055/C7570 can effectively consolidate their existing base of black & white and color laser and inkjet printers, color copiers and outsourced printing in a single, compact, affordable solution that saves them time, money, space and reduces user training requirements.

Customers will be delighted to learn that the C6055/C7570 series offers a very competitive cost per page (CPP) for black & white documents, while at the same time delivering a more economical CPP for color documents than dedicated color printers and copiers can offer. The C6055/C7570 series offers a clear integration path for office and light production users from existing solutions. By taking this path, they will consume less space and power, benefit from a consistent and easy-to-operate user interface, and take advantage of the best price/performance on the market in its class.



55/70 ppm Color

Savin C6055/C7570

Ease of Use

All operations on the C6055/C7570 are performed through an intuitive user interface that requires minimal training for effective operation. The simplified built-in touch screen display makes it particularly easy for even first-time walk-up users to perform off-the-glass scanning, faxing and copying activities. Menus are streamlined so that most functions can be accessed with a few simple selections. Some system settings are automatically applied to take the guesswork out and minimize errors on the output.

Affordability

Customers may initially consider the purchase and operating costs of the C6055/C7570 series to be beyond their budget. But customers often overlook the hidden costs of acquiring, managing and maintaining a large portfolio of office equipment, and the limited durability of desktop or personal devices. Your role is to help them understand how the C6055/C7570 series can be used to replace a number of existing fax machines, laser printers, black & white mid-range MFPs, and even inkjet printers. They will be delighted with the ability to consolidate multiple devices into a single footprint that uses a single set of consumables. This consolidation will deliver an attractive ROI that will justify this approach to color printing in the office.

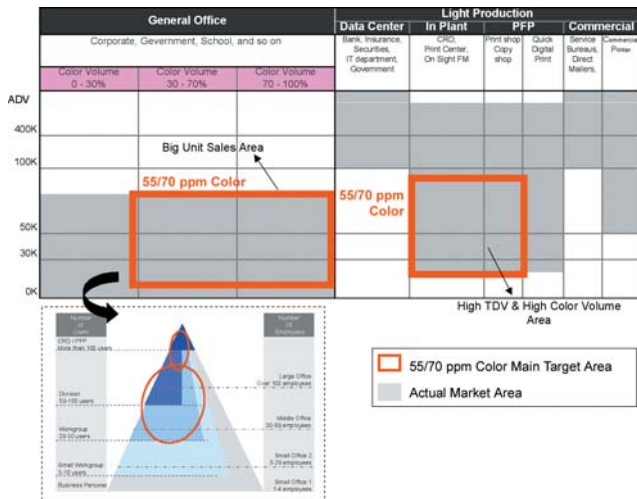
Keeping Color In-House

Ask your customers how often they have to wait for expensive outside printing to be delivered to meet their immediate document needs. Many offices are outsourcing production of brochures, presentations and other color printing. This can be inconvenient from a time and cost perspective, because their current office printing solution cannot deliver the quality and speed required. These customers will like the idea of reducing the cost of outsourcing and gaining increased control over their color printing needs.

The high level of productivity, exceptional image quality and wide range of controller and finishing options offered by the C6055/C7570 series will more than meet the needs of these customers. Also, the durability and reliability of the C6055/C7570 series will be a definite plus for users in both the office and light production environments. With the C6055/C7570 series, customer can produce the same—or better—quality internally that they are accustomed to receiving when they outsource color printing.

PRODUCT POSITIONING

With the introduction of the C6055 and C7570, Savin now has the most comprehensive line of color-enabled MFPs in the market, period. With speeds ranging from 24 to 75 ppm in black & white and 10 to 70 ppm in color, Savin now has a range of general office solutions that covers everything from the small office to the light production environment, including corporate reproduction departments (CRDs).



Like the C6045 and SDC555, the C6055 and C7570 are designed for customers who need and want color and are already generating it, either using outside vendors or via a dedicated color MFP or copier/printer. Your job is to show these customers how the C6055 or C7570 will reduce the cost and/or turnaround time associated with producing color documents, and to allow them to move outsourced color printing in house for reduced costs and greater control over the printing process.

With the launch of the higher speed C6055 and C7570, Savin can now even more effectively address key customer requirements, by:

- Migrating more volume to color to increase the effectiveness of documents.
- Shifting color page volume from outsourcing (print-for-pay/commercial printing) to in-house production.
- Consolidating the number of devices required to meet workgroup/department printing needs
- Introducing a cost-effective solution for light production environments that cannot justify expensive production-class machines.

Savin C6055/C7570

The C6055/C7570 series effectively positions Savin sales professionals to:

- Increase aftermarket revenue and commissions through increased account color volumes
- Grow major account business and penetration in larger workgroups, departments and light production environments.
- Position the Savin brand and product line as the preferred choice for color-enabled MFPs.
- Maintain and increase Savin's market leadership over competitors such as Xerox, Canon and Konica Minolta.

In short, these new products will help you win more deals and target new opportunities in the light production market!

The C6055/C7570 are best served by emphasizing how customers can replace multiple units with a single multifunctional device. Devices that can be replaced include black & white and dedicated color copier/MFPs, scanners, fax machines, and/or multiple color laser or inkjet printers.

Begin with the Finishing!

Complete finishing capabilities are a crucial part of the positioning for these products, especially in the light production environment. The C6055/C7570 MFP mainframe is enhanced by a variety of finishing options that maximize productivity. Along with the ability to copy/print in color, it is important for you to emphasize how the value proposition for the C6055/C7570 series is strengthened by these versatile finishing capabilities.

In addition to 50- or 100-sheet stapling capabilities and the booklet maker finisher, the finishing options for these systems include post-fuser 2-source cover insertion. Another feature that will be greatly appreciated by your customers is the ability to configure the system with a 9-bin mailbox in conjunction with one of the other finishing options, to maximize organization for multiple users while offering full document finishing.

Cover and tab insertion capabilities are very important for customers in the light production environment, as well as in print for pay and CRD environments. In addition, the C6055 and C7570's Large Capacity Tray (LCT) can be configured with a legal-size sheet feeder to support customers that run large jobs on 8½" x 14" sheets.

Neither Xerox nor Konica Minolta offer the Plockmatic BK5010 Booklet Maker and GBC Stream Punch at this moment. This presents an important Savin competitive advantage for the C6055/C7570 series.

These finishing options have a clear-cut advantage. The Plockmatic BK5010 Booklet Maker provides a high accuracy booklet making solution and a beautiful "Square Fold" finish. Booklets consisting of up to 120 pages can easily be produced. You can also offer customers a world standard in the GBC automatic punching solution with various punch-hole types to produce punched, collated documents right from the MFP's control panel.

Table 1 has a summary of all finishing options.

Table 1. C6055/C7570 Finishing Options

9-Bin Mailbox
2/3 Hole Punch
Jogger Unit for 50-sheet staple/saddle stitch
Cover Interposer
2-source Cover Interposer
Z-folding unit
3,000 sheet Finisher with 50-sheet Stapler
2,000 sheet Finisher with Saddle Stitch Stapler
3,000-sheet Finisher with 100-sheet Stapler
Finisher Adapter for SR5000 Finisher Adapter Type C

Target Markets

The C6055/C7570 are specifically designed to address two target markets—the production of business color in the office, and to support the light production market. Each is described here in more detail.

THE GENERAL OFFICE

The C6055 and C7570 color MFPs are designed to serve general office users in medium- and large-size organizations which typically have 30 to 100 or more employees at the site where the unit is installed. Within those offices, these products are designed to be deployed in workgroups and departments or divisions with mid-range to high document volumes. In these environments, MFPs would generally be deployed in the workgroup area for general walk-up usage without the requirement for a dedicated operator or specialized user training. The intuitive, easy-to-operate user interface of the C6055/C7570 makes these products ideal for walk-up environments of this nature.

In addition, the robust features offered by the C6055 and C7570 offer significant opportunities for cost consolidation for these office environments. This includes the ability to reduce the overall copy/print/fax footprint by replacing multiple copy, print and faxing devices with a single, multi-user MFP, eliminating more costly laser and inkjet printers with a more cost-effective color printing platform. Because of the speeds, ease of use and advanced finishing capabilities offered by the C6055 and C7570, most offices will be able to reduce the amount of color printing they are outsourcing, producing those documents in-house and a lower cost and with more control over the process.

Savin C6055/C7570

While some departmental activities may require unique tools, most will be effectively served by the C6055 and C7570 MFPs. Common document types include proposals, presentations, reports, budgets, databases/customer lists, e-mail and memos, training manuals, sales literature and specification sheets.

The primary desktop applications used to create these documents will most likely be part of the Microsoft Office Suite—Word, Excel, PowerPoint and Access—or possibly Corel's WordPerfect and Lotus 123. For e-mail and the web, Microsoft Outlook and Internet Explorer will be the dominant applications, with some Netscape Navigator, Mozilla Firefox and Opera ("shareware" browsers) users.

What is notable about these types of documents is that, while benefiting greatly from the addition of color for covers, charts and photos, they may not require special papers other than cover stocks. For most users, the business color produced by these systems—with the reference colors correct, i.e. red apples, green grass, blue sky, etc.—is more than adequate for their needs.

The C6055 and C7570 are designed for an average monthly volume of 30,000 and 50,000 copies/prints, respectively, and customers whose color volume is at least 50% of their total print volume.

A final aspect of the C6055/C7570 series is its size/installation requirements. Whereas many production-class devices are physically quite large and require a dedicated space or room, the C6055 and C7570 are compact, with the mainframe measuring just 29.5" x 33.5" x 41.3" (WxDxH) and only 55.4" wide with the finisher. Further, no additional clearance behind these systems is required—unlike all the other systems on the market. This means that the unit can be installed flush against the wall and further minimizes the system footprint, making effective use of expensive office real estate.

Understanding the Light Production Market

While the C6055/C7570 discussion thus far as been focused on office and walk-up opportunities, the reliability, productivity, paper handling and range of finishing options of these systems also allow them to compete in selected production markets. When referring to production markets, we are talking about customers that have a dedicated printing/copying requirement. That is not to say that the C6055/C7570 systems are replacements for or competitive with an offset duplicator or high volume color copier. Rather, the C6055/C7570 can be complementary components in an existing production environment.

Many customers purchased earlier color systems because they were the only alternative at the time, and not because they were a specific match to customer needs. As a result, many of these systems have been extremely underutilized, and customers have paid excessively for the use they have derived. Many of these earlier color systems are now coming off of lease. With the C6055/C7570, you now have a cost-effective, reliable and productive solution to replace equipment in those situations.

Your key to success, particularly with customers in production situations, is to understand their monthly volume requirements, the amount of heavy media they anticipate running, and their printing workflow. With the answers to these basic questions, you will be able to determine whether you can offer the best product for the customer's needs.

With the C6055/C7570, you can now offer an attractive solution to the growing light production market. These systems offer:

- **Unmatched Productivity.** With its 70 ppm color print speed, the C7570 is faster than its nearest competitor. Light production users will find this added speed attractive as they seek to improve productivity in busy environments.
- **High image quality.** The C6055/C7570 series competes effectively with its nearest competitor in image quality. These new products include significant image quality enhancements over the C6045 and SDC555. Later in this sales information guide, there is more information on that quality improvement to help you better position these products with customers.
- **Configurability.** The C6055/C7570 series continues Savin's tradition of offering a broad array of options to allow even the most demanding customers maximum customization to meet their specific needs.

Savin C6055/C7570

MULTIFUNCTION REVIEW

For most of your customers, one of the most important reasons for investing in the C6055 or C7570 is the ability to perform multiple tasks from a single footprint. Fewer customers are interested in single-function devices such as scanners, copiers, printers or fax machines. They want one system that can do it all—serving as many employees as possible from a single footprint. In short, they are looking for a comprehensive document processing solution that is efficient and economical.

The C6055 and C7570 meet those requirements. Not only can these systems support a large number of users, they can perform just about every document processing task that is needed in the office and light production environments. And they also provide a centralized document repository for sharing, reusing and repurposing of document content. Key benefits include:

- Printing, copying, scanning and electronic document distribution
- All features can be accessed in a walk-up copying environment as easily as they can be accessed from a remote printing interface.
- Excellent image quality.
- Standard 100-sheet automatic reversing document feeder that enables batch scanning and copying of large documents
- Seamless network integration and connectivity.
- Document storage and file-sharing/distribution capabilities that do not require a separate file server, including LDAP integration.
- Comprehensive security features to ensure that access is restricted to only authorized users and that confidential data is protected.
- Cost-control utilities to minimize operating costs/TCO.
- Versatile connectivity options to enable visiting colleagues, business partners and guests to use the C6055 or C7570.
- Easy system administration for the IT department or system administrator.
- A compact footprint, further enhanced by the ability to place the unit flush against the wall—no need for rear clearance space as required by other MFPs.

The balance of this section will provide a full review of the features and benefits of the Savin C6055/C7570.

PRINTING FUNCTIONALITY

Controller Hardware

The C6055 and C7570 are intended to support a large workgroup or small department with mid- to high print volumes in both color and black & white. That means that it is highly likely that multiple users will be sending files for output either simultaneously or within short intervals of each other. All of this requires that the C6055 and C7570 be able to quickly process (RIP) files and keep the engine running at its full rated speed, printing at optimum quality of 600 x 600dpi.

The C6055/C7570 controller is configured with powerful processing capabilities:

- Intel Pentium-M 1.4GHz CPU
- 1,536MB RAM
- 320GB (2 x 160GB) hard disk storage

Customer Benefits

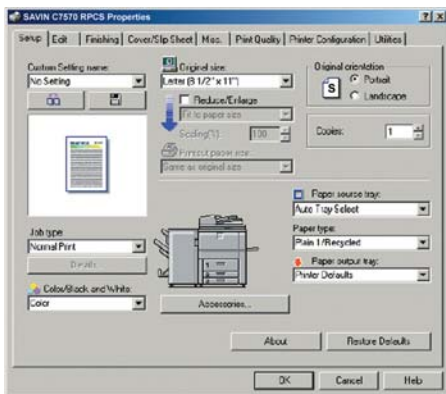
- High-performance CPU ensures rapid processing of complex color files.
- Massive memory (RAM) provides a large buffer for incoming (spooled) data to accommodate multiple users.
- A huge repository—with 191.8GB dedicated to the Document Server—enables users to temporarily store files for quick reprinting or sharing with other authorized users.
- No need for upgrades. The standard configuration of the C6055 and C7570 is engineered for maximum performance without requiring any upgrades.

Printer Drivers/Languages

Users have a choice of two standard printer control languages/printer drivers with the C6055 and C7570—Savin RPCS and PCL 5c/XL. For customers with Macintosh and UNIX workstations or those that output desktop publishing files, there is also an optional true Adobe PostScript 3 driver available.

Savin's Refined Print Command Stream (RPCS) is engineered specifically for documents generated on Windows platforms using applications such as Microsoft's Office Suite. RPCS delivers better performance than PCL drivers by leveraging the power of the sending PC's CPU to prepare jobs for printing. It has an icon-based Graphical User Interface that requires just a few mouse clicks to set up even complex printing jobs.

Savin C6055/C7570



Customer Benefits:

- Ease of use and better productivity. Users simply click on an icon and all printing and finishing parameters are set up automatically.
- No training. All of your existing customers are already familiar with this driver. And for those that are not, its intuitive operation means a streamlined learning curve.

The optional true Adobe PostScript 3 (PS3) is the *de facto* PDL standard for all desktop publishing applications and high-end graphic workflows. PS3 enables Macintosh and UNIX users with larger file sizes and/or specific image manipulation/color matching needs to print to the C6055/C7570 series with maximum control and image quality.

Customer Benefits:

- Supports marketing departments and applications using desktop publishing programs with PostScript output.
- Delivers better color fidelity for desktop publishing applications and PDF files.
- Increases productivity and reduces network traffic with PDF Direct Printing.
- Supports Macintosh and UNIX clients in mixed computing OS environments.

Hewlett-Packard's PCL 5c and XL are the most commonly used color-enabled printing language/drivers for general office applications today. Virtually everyone, including system administrators, is familiar with the PCL 5c/XL interface, knows how it will perform and is comfortable with this driver/interface.

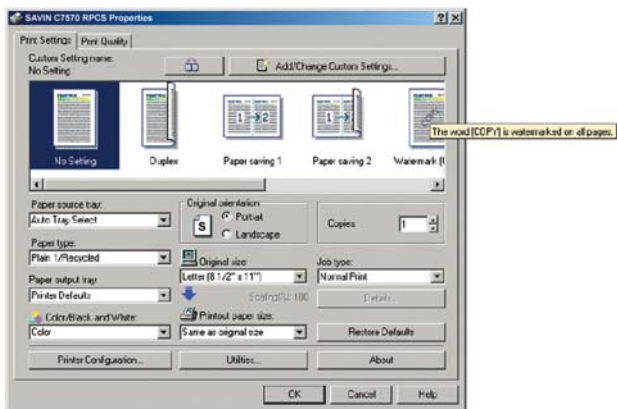
The PCL 5c/XL drivers enable the C6055/C7570 series to fit into virtually any existing HP/IBM-compatible Windows environment.

Advanced Printing Features

PRINT QUEUES

With a click of the mouse, users can select from multiple print queues for different workflows and applications.

- **Sample Print** – Produce a single set for confirmation and approval before committing the system to a lengthy print job to eliminate errors and waste.
- **Locked Print** – A confidentiality feature that only releases a print job from the hard drive after the correct authorization code is entered at the device control panel.
- **Hold Print** – Users can send print jobs to the Hold queue and release them all at once from the device to reduce multiple trips to the system.
- **Store & Print** – Enables print on demand capabilities by storing a print job on the hard drive that can be recalled and printed out as needed.



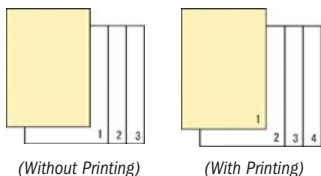
Customer Benefits:

- Flexible printing alternatives that provide convenience, security, and reduce potential waste.

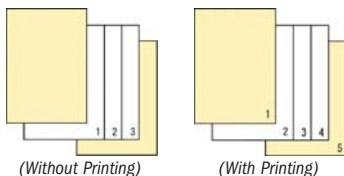
Savin C6055/C7570

COVER PRINTING

Front Cover (RPCS/PCL/PC3*)



Front & Back Covers (RPCS/PCL)



*Note: With PS3, "Without printing" is not supported.

The C6055 and C7570 enable users to print onto different paper stock for the front and/or back cover to create a professional-looking document. Using this feature, your customers can insert either blank or preprinted covers using the RPCS, PCL or (if installed) Adobe PostScript 3 drivers. Users can choose to print—or not—on either side of cover pages. This utility can also be used to insert chapter heading pages.

New to the C6055 and C7570 is a 2-Source Cover Interposer that makes it easy to load different preprinted front/back cover pages without the need to precollate them into a single bin.

Customer Benefits

- Customers can easily add distinction to their documents by adding covers to reports, manuals, and other mission critical documents.

CHAPTERING AND TAB PRINTING

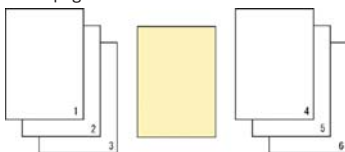
Print on Front Side (With Duplex Mode)

Chapter1: 1-3,
Chapter2: 4-8,
Chapter3: 9-10

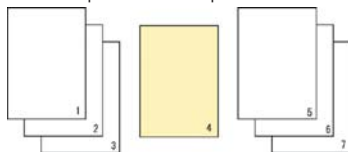


Insert Slip-sheet

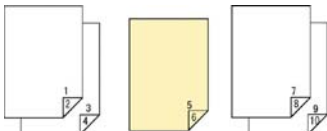
Blank page



Print on Slip-sheet with Simplex



Print on Slip-sheet with Duplex



In addition to adding a front and back cover to a document, users can create chapters within the body of the document so that a chapter slip sheet can be inserted to separate sections. Alternatively, users can set up and print on tabs to separate chapters within the document. Even entire sections of the document can be printed using different paper from another tray with the chaptering feature.

Customer Benefits

- Eliminate manual collation, especially when using tabs within a document. Complete collated document sets are produced ready for distribution and use, or available for offline finishing, such as spiral binding.
- Significant cost savings can be achieved by producing professional looking documents with tabs in house rather than sending them out for printing and finishing.

Savin C6055/C7570

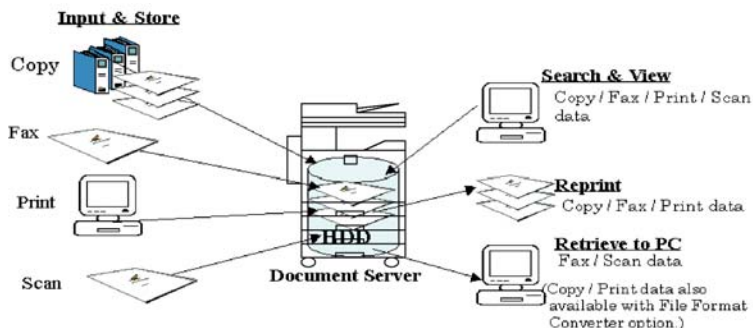
BLACK OVERPRINT

This feature eliminates the “knock-out” white space that is typically created by desktop publishing applications to eliminate the possibility of registration problems—a white “halo”—with text on colored backgrounds. Instead, the background is maintained and the black text is printed on top.

Customer Benefits

- Better quality. This is especially helpful with PowerPoint presentations that typically have a colored background.

Document Server Functionality



More than half of the C6055 and C7570's 320GB hard disk storage capacity—191.8GB—is reserved for the Document Server. This space is used to temporarily store copied and printed documents, as well as scanned documents. The Document Server supports both black & white and color documents/files.

The Document Server has a maximum capacity of 3,000 documents or 15,000 pages; please note that individual documents may contain no more than 2,000 pages.

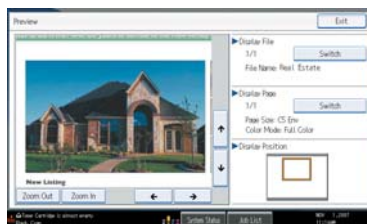
Once stored on the Document Server, copied and printed documents can be reprinted without requiring any additional processing, as they are already in the bitmap format used by the C6055 and C7570.

The C6055 and C7570 can become a document conversion and distribution hub. Many legacy documents are archived only on paper, yet are still necessary for conducting business. And, of course, virtually all new documents are generated on PCs using word processing, spreadsheet and database programs. The C6055 and C7570 Document Server is a robust tool for storing and merging legacy documents with new ones. Thus, the C6055/C7570 can act as a bridge between the paper and digital worlds as customers struggle to manage both types of documents in their daily operations.

Note: When retrieving Document Server data, which is stored by using the Copy or Printer application, the optional File Format Converter is required. By attaching this option, the Savin unique format is converted to common file formats, such as PDF, TIFF or JPEG.

Searching is easy. Users can search by file name or by the name of the person that copied/printed/scanned the document. To facilitate the search, which is done using Web Image Monitor, users can also view the files stored on the Document Server with three different views:

- Thumbnail view
- Icon view
- Details view



Savin C6055/C7570

Core Specifications

Document Types	Printed files and Copied and Scanned documents
Data Formats	
Copies	Savin format
Prints	Savin format
Scans	PDF, TIFF, JPEG
Capacity	3,000 documents, 15,000 pages (maximum of 2,000 pages/document)

Customer Benefits

- Lower total cost of operation. More than simply saving money on the C6055 and C7570, this capability reduces the organization's operating costs by migrating hard-copy information to digital formats.
- On-demand printing. Printing documents on demand minimizes the need to maintain inventories of forms or other frequently used documents. As inventoried documents become obsolete, they must be discarded, resulting in unnecessary incremental cost.
- Improved productivity. Employees can easily reuse and repurpose existing documents rather than recreating them from scratch.
- Bridging paper and digital: Document Server, in conjunction with the C6055/C7570, offers an easy-to-use bridge between paper and digital worlds
- Saves time. Employees can spend an inordinate amount of time searching for documents. Document Server provides a convenient and centralized storage hub making documents easier to locate.

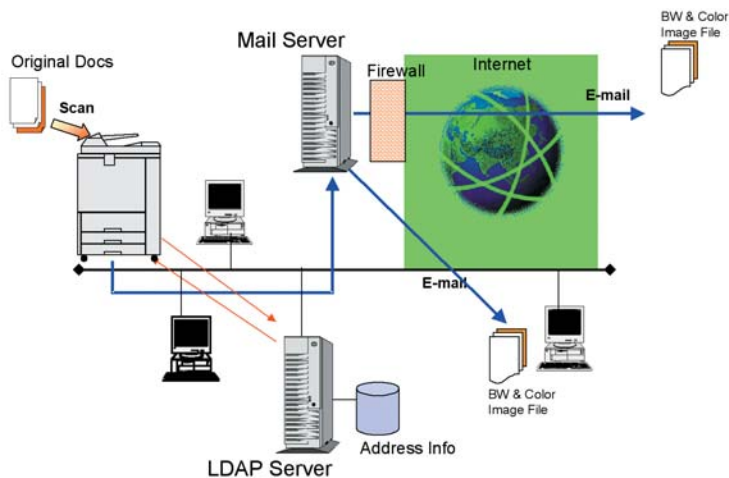
Scan & Send Functionality

Not only can your customers scan documents into the C6055 and C7570 Document Server for sharing with users on the local area network, they can also distribute them to colleagues, business partners and customers located anywhere in the world using the system's Scan-To capabilities. There are two ways to share documents that have been scanned into digital formats:

- Scan-to-Email
- Scan to folder/FTP server

Further, your customer can simultaneously scan a document to the Document Server and Scan-to-Email and/or Scan to Folder, giving both local and remote users instant access to important documents.

SCAN-TO-EMAIL



This process is almost identical to sending a fax, except that it doesn't incur any telecommunications charges. Optionally, senders can locate recipients using the company's e-mail address book which is almost always stored on a Lightweight Directory Access Protocol (LDAP) server. Up to five (5) LDAP servers can be registered with the C6055 and C7570, enabling these systems to serve even the largest Fortune 500 organizations.

LDAP facilitates rapid distribution by enabling the sender to search for recipients using a number of criteria, including Name, e-mail address, fax number, company name, department name, as well as strings such as beginning word, end word and exact match. It will then generate up to 100 "hits" matching the search criteria.

For distribution outside the company or organization, the sender may also key in the recipients' addresses on the C6055 and C7570 control panels. As with e-mail programs, users can select from, to, cc and bcc on the attention line.

Users may send scans to as many as 500 people at once (100 using LDAP or if manually keying in recipients' names on the control panel). In addition to LDAP, up to 2,000 names/e-mail addresses and 500 groups can be stored on the C6055 and C7570 hard disk drives.

Savin C6055/C7570

To ensure that only authorized personnel take advantage of Scan-to-email, the C6055 and C7570 support two types of security.

- SMTP Authentication requires the user to input a valid ID and password with the SMTP server to send an e-mail.
- POP before SMTP requires the user to input a valid ID and password with the POP3 server to send the e-mail via SMTP.

For recurring documents, such as expense reports, users can define and save 24 different subjects (20 characters maximum) for easy recall. Similarly, they can store five different body messages containing up to 400 characters (80 characters x 5 lines). Alternatively, the C6055 and C7570 support a fixed message, such as "This e-mail and attachment sent by <username>."

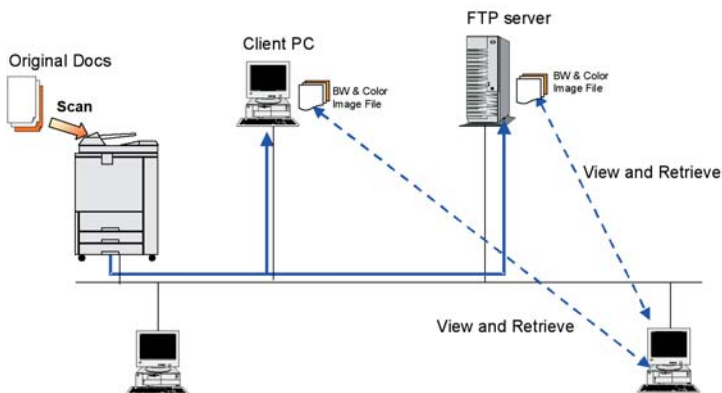
Scan-to-Email Features

- Send images in black & white or color to multiple recipients
- Send files to 100 (LDAP) or 500 people/addresses (C6055 and C7570 Address Book)
- Send files as TIFF or PDF (single- or multi-page)
- Supports six (6) resolutions: 100dpi, 150dpi, 200dpi (default), 300dpi, 400dpi, 600dpi.
- Maximum file size: 102,400KB (default = 2MB)
- Supports up to 5 registered LDAP servers
- Stores up to 2,000 names/e-mail addresses and 500 groups on hard disk
- Supports SMTP and POP before SMTP authorization.

Customer Benefits

- Scan and send documents color and black & white images and graphics at no cost.
- Simple operation. As easy to use as a fax.
- Increased system versatility and value for better return on investment.
- Does not require any additional hardware or a separate mail server.
- LDAP minimizes IT/administration requirements and ensures accuracy in distribution lists.
- Industry-standard file formats: TIFF and PDF.
- Secure. Authentication ensures that only authorized users can use Scan and send features.
- Maintains confidentiality. Scanned documents are routed directly to the recipient's email inbox, rather than sitting visibly in a fax machine output bin.
- High quality. Users can scan at resolutions of up to 600dpi and/or in color and store without compression to maintain maximum image quality.

SCAN TO FOLDER FTP/SMB/NCP



Closely related to Scan-to-email is Scan-to-Folder FTP/SMB/NCP. The only difference is that with Scan-to-Folder, your customer stores the scanned document in a designated folder on a server and then provides recipients with its URL so it can be downloaded at their convenience.

Scan-to-Folder is particularly well suited for posting documents for customers and business partners, as well as for files that might get “bounced” by receiving mail servers that don’t permit attachments or because the file size is too large for the receiving e-mail system.

Scan-to-Folder works with both FTP and SMB servers. FTP—File Transfer Protocol—is an open protocol that supports any computer operating system (Windows, Macintosh, UNIX). SMB—Server Message Block—is for Windows-only networks.

Once documents are stored in a folder, users can then browse them using an Internet browser.

Savin C6055/C7570

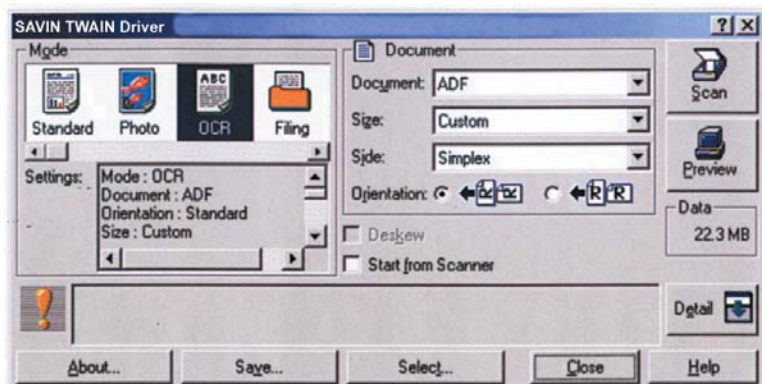
Scan-to-Folder Features:

- Supports FTP, SMB, and NCP environments
- Send files to 50 folders simultaneously.
- Distribute to 2,000 addresses at once
- Supports six (6) resolutions: 100dpi, 150dpi, 200dpi (default), 300dpi, 400dpi, 600dpi.
- No maximum file size.
- FTP supports all computer platforms
- SMB supports Windows-based networks/environments

Customer Benefits

- Reduced operating costs. Users can scan and distribute documents and images without any telecom/fax charges to large numbers of people.
- No load on e-mail systems. Recipients -download documents/files to offload file transfer from e-mail systems.
- Increased Flexibility. Scan-to-Folder enables “pull-based” distribution letting the recipient choose when and where to download files.
- Security. Files can be stored on secure servers requiring log-in ID and passwords to ensure that only authorized users have access to documents.
- Open architecture. Scan to FTP eliminates system compatibility issues
- No file-size restrictions. Great for large -documents and images that might be “bounced” by e-mail servers.

Network TWAIN Scanning



Documents or images to be manipulated can also be scanned using the TWAIN Driver, which works in conjunction with any application that supports TWAIN, such as Adobe Photoshop.

This utility supports both images and documents, and lets the operator scan in four modes:

- Standard—binary scanning for text that will be saved in TIFF.
- OCR—for documents that will be converted into editable text.
- Filing—a compact/compressed file for archival.
- Photo—for images that will be manipulated.

Document scanning functions include the ability to add date, page number and customizable text stamping to scanned images.

For scanning hardcopy photographs, users have controls for brightness, contrast, threshold, gamma, and halftone pattern/moiré compensation.

In addition to the scanning across a 10BaseT/100BaseTX Network, TWAIN scanning is compatible with 802.11b Wireless LAN, USB and IEEE 1394 connections.

Note: Network TWAIN Scanning supports the ARDF for batch scanning.

Savin C6055/C7570

Network TWAIN Scanning Features

Supports Windows-based networks/computers

- User-selectable resolutions: 100 - 600dpi Color; 100 - 1,200dpi Black & White
- Color and Black & White
- Advanced scanning controls
 - ◆ Brightness
 - ◆ Contrast
 - ◆ Threshold
 - ◆ Gamma adjustment
 - ◆ Halftone pattern/moiré compensation
- Supports OCR for converting hardcopy –documents into editable word processing files.
- Stamping capabilities
 - ◆ User-defined Text
 - ◆ Date
 - ◆ Page Numbering
- Eliminates the need for a dedicated flatbed scanner, saving space and improving ROI.
- Compliant with all TWAIN applications.
 - ◆ Versatile connectivity:
 - ◆ 10BaseT/100BaseTX
 - ◆ USB 2.0
 - ◆ IEEE 802.11b Wireless LAN
- Does not require any additional hardware such as a delivery server.

Customer Benefits

- Capture hardcopy images and drawings for manipulation and use with desktop publishing applications.
- Increased system versatility to improve ROI.
- Eliminates the need for a dedicated flatbed scanner, eliminating yet another peripheral and saving space.
- Supports OCR applications to enable conversion of hardcopy documents into editable text files.
- Annotation capabilities facilitate better document tracking.
- Reduces network traffic. Using USB for scanning enables scanning of large files without impacting network performance at all.

Networking and Connectivity

SEAMLESS INTEGRATION

Seamless integration with the network is an essential feature of the C6055 and C7570. Toward that end, the system is configured with a 10BaseT/100BaseTX interface and a standard RJ-45 plug to connect to the network. In addition, the mainframe comes with a USB 2.0 serial interface to connect to a print server.

The C6055 and C7570 support all of the major network protocols and operating systems, including TCP/IP, Novell IPX/SPX, EtherTalk/AppleTalk and SMB/NetBEUI. For customers that run more than one -protocol, the C6055 and C7570 feature automatic sensing/switching from one protocol to another.

DYNAMIC DOMAIN NAME SYSTEM (DDNS) SUPPORT

Many of your customers will use networks with dynamic domain names, meaning that the IP addresses and/or device name of the C6055 or C7570 changes periodically. The C6055 and C7570 support DDNS to automatically update the IP address of the C6055 and C7570 on the server so that end users can always access the system.

Customer Benefits

- Easy installation/integration. Your customer can simply plug in the C6055 or C7570, provide them with an IP address and they are ready for use.

WIRELESS NETWORKING OPTIONS

With the explosion in wireless devices—including laptops, PDAs, Blackberries and mobile phones—comes a need to print without a physical connection. In addition, some buildings and office layouts make hard wiring difficult or impossible. Savin offers your customers two wireless networking options that offer these customers an easy way to print to the C6055 or C7570.

Wireless connectivity is also ideal for short-term needs, such as conferences, trade shows and events.

Options

IEEE 802.11b Wireless LAN Interface

Function

- Supports data transfer speeds of 1Mbps, 2Mbps, 5.5Mbps, 11Mbps at distances up to 328 feet. (100 meters)
- Typical distances for indoor use are between 30 - 300 feet.
- Disables hard-wired 10BaseT/100BaseTX port.

Supports Windows 9x/Me/2000/XP/2003/Vista and Mac OS.

Savin C6055/C7570

Customer Benefits

- Provides true printing mobility with immediate cable-free connection at high speeds for multiple users simultaneously.
- Eliminates the need for cables in offices where adding hard-wired cabling is not possible or cost-prohibitive, such as in older or historic buildings, those featuring brick/stone construction, etc.
- Allows growing offices to add employees without installing costly network drops.
- Excellent choice for temporary needs, such as on-site convention/event printing.

Option

Bluetooth Interface

Function

- Provides another wireless -protocol that supports printer connectivity within a closer range of 32 feet (10 meters).
- Supports Windows 98SE/Me/NT/2000/XP environments.
- 1Mbps data transfer rate

Customer Benefits

- This is a great solution for companies with frequent traveling/visiting executives, laptop users, or temporary employees that will be located within close proximity of the printer and need to print documents. Bluetooth is a popular wireless standard for PDAs and cell phones, and will allow users to print data/pictures stored on these devices without hassles.

IEEE 1284 PARALLEL INTERFACE OPTION

Function

- Provides a direct connection to a PC via a Parallel cable

Customer Benefit

- Preserves customer's investment in older PC technologies. Data transmission speeds will be slower than USB 2.0, but this option enables customers to use current printing solutions.

Note: Only one of these interfaces can be installed at one time.

Why Go Wireless?

Wireless connectivity is a useful feature for traveling business executives who wish to conveniently send e-mail, print, or send and receive files while avoiding the time-consuming process of copying laptop files to a memory stick, diskette and/or borrowing someone's connected PC. It is also an effective alternative in offices where adding hard-wired cabling is not possible or is cost-prohibitive, such as in older or historic buildings and structures featuring brick/stone construction. Wireless connectivity is also an excellent choice for short-term needs such as on-site convention/event printing, or for growing offices to connect temporary employees without installing costly permanent network drops.

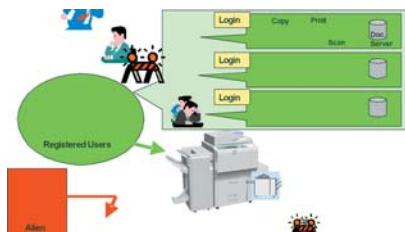
To enable wireless connectivity, an access point (a device with an antenna that links the network to portable computers and peripherals) is installed within specified distances and manages wireless data transfer between devices. The C6055 and C7570 may be equipped with an optional IEEE 802.11b Wireless LAN Interface or a Bluetooth Interface to provide cable-free printing.

Savin C6055/C7570

Security and Administration

Device access and data security have quickly moved to the top of customer concerns and purchase criteria. The C6055 and C7570 offer a number of standard and optional features to limit device access, track use, and protect confidential information stored in memory.

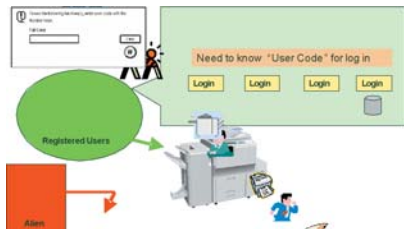
WINDOWS AUTHENTICATION



When accessing the MFP, users are asked to input the username and password that matches their existing login data for other areas of the network domain. Windows Authentication thereby protects against unauthorized use of the machine while eliminating the need for general users to remember additional passwords and for IT personnel to support another login-password system. Once access is granted, the user's name is automatically entered in the Sender's Name field of outgoing Scan-to-email jobs, providing traceability.

Depending upon the customer's type of network, users may take advantage of these other device access mechanisms:

- LDAP Authentication uses the company e-mail server to confirm authorization.
- Basic Authentication limits device access by asking for a username and password stored in the device. This allows customers to control device/data access in non-networked environments.
- User Code Authentication uses assigned code to monitor use. The same code can be used by more than one user, to track system usage by client or job, for example.



- SMTP Authentication and POP before SMTP provide an additional layer of security by verifying a user's rights to send scanned data before the file is transmitted via Scan-to-email.

HARD DISK DRIVE DATA PROTECTION

The Data Overwrite Security System (DOSS) option destroys temporary data stored on the 320GB HDD by writing over it using one of three government-endorsed overwrite methods, making it impossible to reconstruct images or files. Initially designed to meet government, military, and global account requirements for classified document security, DOSS can be used to add value for customers with all types of mission-critical documents that require protection from leaks and unauthorized distribution.

Data is overwritten by the Auto Erase Memory function for all copy and print jobs, scanned files, and paperless fax forwarding as soon as the job is completed. Documents stored by users via the Document Server function, information registered in the Address Book, counters and network settings are not erased in this mode.

When it is time to relocate or dispose of the system, the Erase All Memory function permanently erases all data on the HDD, including Address Book information, user codes, additional fonts downloaded to the system, and network settings, for ultimate peace of mind.

Other important security features include:

- **Locked Print:** Protects confidential documents by storing print jobs in a hold queue until the user arrives at the device and enters a corresponding password to release the job from memory.
- **Password Protection for Stored Files:** Users can set a password for each file stored in the Document Server to prevent unauthorized access to individual documents.
- **Enhanced File Protection:** In the event an unauthorized user does gain access to the device and attempts to open a password-protected file, the file is locked out after an invalid password is entered 10 times. Only the system administrator can clear the locked file.
- **Access Level Permissions:** Administrators can set the usage rights of individual users to enable/disable the printing/sending/editing/deleting of stored data, as well as those who can use the scanner function. Further, administrators can set the system to restrict ad-hoc e-mail address entry, thereby limiting distribution only to pre-registered destinations.

Savin C6055/C7570

ENCRYPTION (SECURE SOCKET LAYER)

In addition to authentication and permission rights, password-protected documents and hard disk erasure, the C6055 and C7570 offer yet another level of data protection through password and data encryption mechanisms. By scrambling passwords as they travel over the LAN, it becomes impossible for hackers to intercept, decipher, and tamper with them.

A series of communications take place between the sending PC and the MFP so that passwords can be encrypted prior to sending, and decrypted once they arrive at the printer. The C6055 and C7570 also support these additional encryption modes:

- SNMPv3 Encrypted Communication for –administrators making remote changes to device settings via SmartDeviceMonitor.
- Encrypt Address Book to protect the contact information stored in the system Address Book. Even if the HDD is physically removed from the unit, the data cannot be read.
- Driver Encryption Key scrambles user login passwords so others cannot access the system using another user's password.
- PDF Password Encryption enables users to assign a password to PDF files when using the PDF Direct Print function, or to block access to stored PDF files.

SYSTEM ADMINISTRATION

With the C6055 and C7570, system administration has been broken into five separate functions, both to spread the workload among the IT department and to limit how much control any one administrator has over the system. However, customers can assign all five administrator roles to one or more individuals.

- Machine Administrator: Manages the mainframe settings for default output and finishing parameters.
- Network Administrator: Manages IP addresses and e-mail settings. Can restrict access to only specified users and IP addresses.
- File Administrator: Manages permissions relating to access to files stored on the Document Server.
- User Administrator: Manages the Address Book on the C6055 and C7570 hard disk drive. This person registers and manages all user names and passwords and other settings related to the Address Book.
- Supervisor: This person has authority over all four Administrators access to the C6055 and C7570, with the power to add/change/delete the Administrators' password. The Supervisor cannot change any of the settings managed by the four Administrators.

SAVIN SOFTWARE UTILITIES FOR DOCUMENT & DEVICE MANAGEMENT

Savin's suite of document and device management solutions is reviewed here because your marketing efforts must include more than hardware—you need to present a total solution. This section provides a basic overview of several bundled and optional software utilities. For detailed information and specifications, please refer to the appropriate Savin Document Solution Product Launch Package, or for a downloadable brochure visit www.savin.com.

Integrating MFPs and printers with an existing IT infrastructure requires a lot more than an Ethernet interface. Savin provides a comprehensive set of administrative and integration software tools to assist administrators and end-users in the installation, configuration, and maintenance of the device. These utilities also add value to your solution by enabling you to deliver streamlined workflow and document management solutions in addition to administrative tasks.

Bundled Solutions

WEB IMAGE MONITOR



Web Image Monitor (WIM) is built into the controller of every Savin MFP. The interface has been given a colorful facelift, making WIM easier than ever for administrators to use and manage a single device. No separate utility software is required, and all device settings can be managed via a normal web browser, i.e. Internet Explorer, by simply inputting the machine's IP address as the URL. The following are features supported by Web Image Monitor:

- Browse the current status, job, and error histories of the target printer.
 - Monitor system status including paper and supply levels, on- or off-line status, etc.
 - Manage administrator/user authentication settings.
 - Reconfigure the network settings.
 - Administrators and users are notified via E-mail alerts in the event of a fault condition such as Low Toner, No Toner, Service Call, or Off-line.
- The Remote Operation Panel allows an administrator to reset the current job or reboot the device from anywhere on the network in the event an end-user cannot resolve the problem directly.

Savin C6055/C7570

SMARTDEVICEMONITOR/WEB SMARTDEVICEMONITOR

While Web Image Monitor manages a single printing device, the SmartDeviceMonitor utility can administer multiple devices on the network. Like WIM, SmartDeviceMonitor continues to evolve. An improved user interface enables IT administrators to easily monitor and manage entire fleets of Savin devices using simple client workstation tools. This new version also includes new functionality based on input from the field, including the ability to change and download driver default settings, see information regarding attached options, and more. These utilities also provide limited information about other vendors' devices so that IT managers can use a single utility to monitor all printing devices on the network. SmartDeviceMonitor consists of two software components:

- **SmartDeviceMonitor for Admin:** A more robust utility designed for network administrators to install, monitor, and manage all networked Savin peripherals from a single workstation. Administrators may change device names or IP addresses as necessary. With the User Management Tool, printing usage can be monitored, and users accessing color printing can be restricted.
- **SmartDeviceMonitor for Client:** A "lite" version intended for end-users, this utility is installed on client desktops and allows users to view the status and availability of networked Savin peripherals. Once SmartDeviceMonitor is installed, an icon appears on the Windows taskbar that represents the status of the default Savin peripheral.

SmartDeviceMonitor provides the following advantages:

- **Ease of Operation:** SmartDeviceMonitor can be set up to automatically display the status of the default Savin peripheral, and operation is very intuitive.
- **Enhanced Productivity:** Network administrators can view the status of connected Savin systems right from the desktop. This eliminates the hassle of walking to a device to determine if there is a problem. End-users can determine the status of a device before sending a job for increased efficiency.
- **Reduced Downtime:** Users can easily select alternate peripherals if the primary device is unavailable, ensuring that documents are promptly produced.
- **User Alerts:** SmartDeviceMonitor for Admin provides pop-up alerts.

DESKTOPBINDER V2 LITE TYPE II



DeskTopBinder V2 Lite is a document management application that enables users to view and combine thousands of pages stored across various folders and devices—even documents created by different software programs—into a cohesive document with a single set of attributes for printing or sending.

With DeskTopBinder V2 Lite Type II, it adds some of the functionality from SmartDeviceMonitor for Client (previously an independent utility) to integrate device monitoring, parallel printing, and print job notification into its document management function, streamlining the overall document publishing process.

Optional Solutions

SCANROUTER/GLOBALSCAN

With the prevalence of Scan-to capabilities and LDAP support built into every Savin MFP, your accounts may have less need for these scanning and document distribution utilities than with earlier generation digital MFPs. These utilities remain available to your customers for use with legacy systems that may still be installed somewhere on the network; or for enterprise-wide scanning applications.

ScanRouter

Savin's ScanRouter family is a comprehensive digital document delivery system that enables Savin MFP customers to scan documents such as photos, schematics, and hand-written reports, and transmit them to any destination. ScanRouter transforms a single MFP into a shared network scanner that can be accessed by all users. ScanRouter is comprised of a Document Server for document management and storage, and a Delivery Server that is available in either Professional or Enterprise versions to suit smaller workgroups or larger companies, respectively.

GlobalScan

GlobalScan is a document scanning and management application for large-scale environments. It takes the Scan-to capabilities built into Savin MFPs and makes it possible to leverage them across national and global enterprises. GlobalScan provides the same Scan-to-Email and Scan-to-File/Folder, but makes it possible to manage these functions across 250 Savin systems located anywhere in the world. In addition, it adds 128-bit encryption and the secure HTTPS protocol to insure that documents are protected during transmission. GlobalScan is designed to work with the document/content management systems often encountered in large organizations, including Captiva, Rightfax, Documentum, FileNet, OpenText, Stellent, and Interwoven. Customers can also configure the system with optional utilities that perform OCR and create searchable PDF and text files, as well as RTF for word processing and Excel files for spreadsheets or database applications.

Savin C6055/C7570

ECABINET ARCHIVAL SOLUTION

eCabinet is the intelligent electronic file cabinet from Savin. The award-winning desktop 1000 or the powerful rack-mountable 2100 are the ideal in-house systems for managing files electronically. eCabinet automatically archives any file type from networked peripherals such as scanners, copiers, printers, fax machines, and PCs (including Web and e-mail), and enables searching and retrieval at the desktop in seconds through a convenient Web browser. Users can capture documents from multiple sources, formats, and locations while recovering wasted office space and/or monies spent on physical document storage space. Features include:

- Accurate, full text document retrieval
- Keyword search templates
- Industry standard Web browser user interface
- Intelligent document archiving
- Information can be captured from a variety of sources
- User passwords are employed to prevent unauthorized personnel from accessing sensitive documents. User-defined permissions can limit document access to individuals or groups.

DOCUMENTMALL WEB-BASED STORAGE SOLUTION

The screenshot shows the DocumentMall web interface. On the left is a navigation tree with folders like 'My Inbox', 'Recycle Bin', 'My Cabinet admin', 'Client Files', 'Finance', '2003 Financials', 'Accounts Payable', 'Invoices', 'Guest', 'HR', 'Housing Applications', 'Housing Files', 'IT', 'Legal', 'Marketing', 'Purchasing', and 'Sales'. The main area displays a table of files under the 'Finance' folder. The table has columns for Name, Owner, Size, Document Type, and Permission Set. Below the table are controls for 'Items per page' (set to 20) and 'Select All' / 'Clear All' buttons.

Name	Owner	Size	Document Type	Permission Set
2002 Financials	admin			Financial Information
Accounts Payable	admin			Everyone Read
Invoices	admin			Financial Information
AP - Invoice Case Study - Short Genes...	admin	255,499 bytes	Document	Financial Information
Copy of Synadine Inc. 3485 Oaktree St.	admin	18,908 bytes	Document	Financial Information
DocumentMall Indexing Steps.doc	admin	20,992 bytes	Document	Financial Information
MFM Signoff page.doc (2.0)	admin	34,304 bytes	invoices	Financial Information
Monthly RM Report Requirements.xls	admin	16,384 bytes	Document	Financial Information
Order and Billing Process.pdf	admin	130,560 bytes	Document	Financial Information
Quarter Sales sheet.doc (1.3)	admin	18,456 bytes	Document	Accounts Payable
Vendors.xls	admin	13,824 bytes	Document	Financial Information

DocumentMall is an exceptionally flexible document management and storage service that allows users to store, share, manage and protect documents over the Internet from the convenience of a PC. Consolidate paper and electronic documents in DocumentMall's central and secure off site repository for 24/7 worldwide access that includes the ability to view, share edit, and print documents as well as collaborate with anyone, anywhere. The DocumentMall browser firmware option for Savin MFPs provides an encrypted connection between the MFP and DocumentMall providing an easy and cost-effective solution that streamlines document processing and improves security and disaster readiness of important paper-based documents. This industry exclusive integration with Savin hardware enables you to distinguish yourself from competitors, open doors to new accounts, and revisit existing accounts.

The Savin DocumentMall solution offers a low-cost/low-risk hosted application for document storage and sharing. There is no initial payment/capital expense required to begin using DocumentMall, which provides the following advantages:

- A document sharing solution that encourages collaboration.
- Easy and secure solution that requires minimal end-user training.
- Eliminates the need to install, maintain, and upgrade software.
- Seamless integration with Savin hardware.

SAVIN WEB JETADMIN PLUG-IN

More system administrators rely on HP's device management utilities than any other solution. As a result, Savin was the first digital output device manufacturer to develop a certified plug-in for HP Web JetAdmin. Not only does this plug-in enable users to "see" icons and bitmap images that depict each Savin model installed on the network, it provides real-time status error messages and remote diagnostics. Now administrators can manage and configure individual and other Savin devices using a familiar management tool alongside HP devices.



SAVIN PRINTMAIL



Savin PrintMail is an easy way to create and print customized documents, including letters, labels, coupons, invitations, cards, targeted brochures, and more, directly from a CSV (Comma Separated Value) file

like Microsoft Excel and Access. Whatever the list, Savin PrintMail allows users to simply merge data fields with highly personalized, dynamic templates to produce effective and powerful one-to-one communications for customers, prospects, partners, employees, or anyone.

Savin PrintMail can be learned and used by anyone who presently uses a PC. New design layouts can be developed using simple Wizards and templates, merged with list data and sent for print in minutes, meaning your customers can take advantage of opportunities as they happen.

SDM ENTERPRISE PLUG-INS

SmartDeviceMonitor Enterprise Plug-Ins include HP OpenView, CA UniCenter TNG, and Tivoli NetView. These "Plug-Ins" provide auto discovery, system administration and device configuration utilities, along with color-coded status reports of all networked Savin Systems.



Savin C6055/C7570

SAVIN OUTPUT MANAGEMENT SYSTEM (OMS)



Savin OMS enables host-based AS/400 users to print to networked Savin systems, eliminating the need for dedicated host-based printers. OMS opens the door to enhanced productivity that comes with placing state-of-the-art cut-sheet printers on the front end of mainframe data streams.

SAVIN DOCUMENT OUTPUT TECHNOLOGY (DOT)

Savin DOT technology server-based middleware provides plug-ins for users of Linux and UNIX systems to execute variable data printing applications on networked Savin systems, eliminating pre-printed forms and the need for dedicated host-based printers.



PRINTER COST AND SECURITY MANAGER (PCSM)

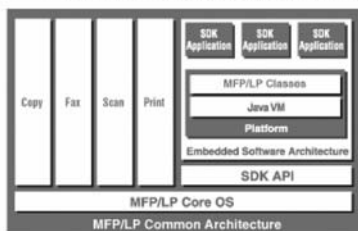


DATE TIME RANGE	User ID	Printing Type	Description	Pages	Cost
07/19/2008 07:30:18	ADMINISTR	MS-DOS	MS-DOS	1	0.00
07/19/2008 07:30:18	ADMINISTR	MS-DOS	MS-DOS	1	0.00
07/19/2008 07:30:18	ADMINISTR	MS-DOS	MS-DOS	1	0.00
07/19/2008 07:30:18	ADMINISTR	MS-DOS	MS-DOS	1	0.00
07/19/2008 07:30:18	ADMINISTR	MS-DOS	MS-DOS	1	0.00
07/19/2008 07:30:18	ADMINISTR	MS-DOS	MS-DOS	1	0.00
07/19/2008 07:30:18	ADMINISTR	MS-DOS	MS-DOS	1	0.00
07/19/2008 07:30:18	ADMINISTR	MS-DOS	MS-DOS	1	0.00
07/19/2008 07:30:18	ADMINISTR	MS-DOS	MS-DOS	1	0.00
07/19/2008 07:30:18	ADMINISTR	MS-DOS	MS-DOS	1	0.00

Savin Cost and Security Manager helps customers track the use of connected MFPs and printers to monitor output costs and regain control over printing expenses. In addition to preventing potential unauthorized use or abuse of the printer through job tracking, the data collected by PCSM also allows users to bill departments or clients for copies and prints. This is common in legal applications, for example.

DEVICE CUSTOMIZATION

Embedded Software Architecture



Savin understands that every business is unique. To meet your customers' specific workflow requirements, the Savin Series features Savin's new Embedded Software Architecture™. This innovative Java-compatible software development platform permits for the design and implementation of customized applications for Savin multifunctional systems and laser printers.

The Software Development Kit (SDK) for the ESA™ is a package of code-writing and application development/compiling/testing/debugging tools and manuals. Together, they allow Savin and

customer solution partners (ISVs, SIs, VARs, etc.) to create and embed unique applications that run inside the MFP to meet the specialized workflow needs of businesses. These may include forms printing, unique fonts, barcodes, retail transaction printing, automated document routing, or report printing applications. After an application has been created and tested, the code is transferred to the MFP and stored in the system's HDD. Savin's Embedded Software Architecture will help to level the playing field against other customization solutions, such as Canon's MEAP (Multifunctional Embedded Application Platform).

For more information on Savin's Embedded Software Architecture™ platform, please visit www.ricoh.com/esa.

@REMOTE

In general, @Remote is a system that enables us to provide customers with an expanded range of services for the printing devices on their network. Historically, customers have requested automation of meter reads, more accurate and timely meter billing and fleet reporting. @Remote is the technology that makes not only these services possible but will do a great deal more.

Same Technology, Two Approaches: Network Appliance and Embedded Technology

1. Remote Communication Gate – Network Appliance Type

The @Remote network appliance is designed and developed by Savin. During its development, our product development groups have worked diligently to continue to enhance GW Architecture to enable these devices to communicate with the remote management system. Newer GW architecture devices can communicate about their status including toner levels and error conditions, furnish meter data, automatically send service call requests, receive firmware and be adjusted remotely. @Remote technology makes this functionality possible. In specific, the Remote Communication Gate (RC Gate) network appliance is a small footprint, thin server that is connected to the network. It enables meter collection of network connected Savin-made and non-Savin printing devices. (See table below for capabilities by device type). The RC Gate appliance communicates the meter data to a central server where the data is collected. Data communication uses HTTPS secure internet

Savin C6055/C7570



Savin's @Remote System using RC Gate

	@Remote MFPs Compatible <small>(Print, Copy, Fax)</small>	QW Architecture <small>(Device's level)</small>	Earlier digital & OEM engines	Competitor engines
Phase I				
Meter Readout (RAW / Roll)				
Print	Yes	Yes	Print meter only	Print meter only
Copy	Yes	Yes	No	No
Fax	Yes	Yes	No	No
Scan	Yes	No	No	No
Usage Reporting	Yes	Yes	Print volume	Print volume
Phase II				
Firmware Upgrade	Yes	No	No	No
Remote adjustment	Yes	No	No	No
Service Call Indication	Yes	No	No	No
Supply Usage	Yes	Yes	No	No

Device Compatibility with RC Gate

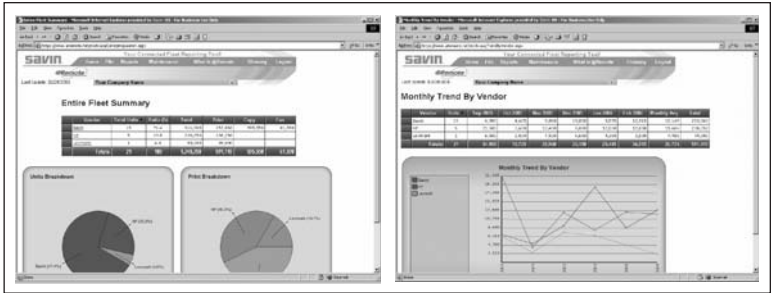
■ Remote Communication Gate

- ◆ RC Gate installed on the network can auto-discover connected MFP's and laser printers.
- ◆ One RC Gate can monitor activity of up to 500 Savin and non-Savin networked printing devices on a LAN or WAN
- ◆ Reads and collects copy, print and fax meters for newer Savin devices.
- ◆ Data communication is one way and outbound only using secure HTTPS internet protocol
- ◆ Once the data is collected, it can be accessed to show fleet utilization reporting for you and your customers.
- ◆ Ideally suited to environments having 5 or more Savin network-connected devices or 25 other devices.
- ◆ See the @Remote launch kit for complete details and pricing information.
- ◆ A Whitepaper is available. Provide it to the IT managers involved in the decision.

Remote Communication Gate

- Linux Based thin server
- Measures 5.5" x 8.5"
- Certified under ISO15408 pending (Information Technology Security Certification)





The RC gate is appliance suited to accounts having a sufficient number of network connected printing devices that will require automated assistance to gather information to help the account to manage their fleet and will benefit from having access to fleet utilization reporting. See the fleet reporting examples shown above. You can demonstrate the web based fleet reporting by accessing the demo web site:

<https://www.atremote.net/savin>

Username = 'sample'

Password = 'password'

2. @Remote Embedded Type (There is no Product Code required since the function is embedded)

@Remote technology is now embedded in the architecture of this product family, making it possible for the device to report on its own meters and status. For accounts that don't want to be involved in collecting meter data themselves, these intelligent devices can communicate their own meter data to the same Center System indicated on page 1. That data can be retrieved by your sales company by the operation department using a browser. It can then be used for meter billing purposes. These devices are also able to report their toner status, initiate a service call or receive remote firmware upgrades, assuming that your sales company supports that functionality. Embedded @Remote is ideally suited to accounts needing meter reading of 1 to 4 network-connected devices. Embedded @Remote is included at the factory in this model, however, it is not shipped in the enabled mode. Should your customer wish to have this service, it must be enabled by a service technician. Since it will send its meter data to the Center System, the customer should be asked to complete an Addendum to Services Agreement which also includes information on data confidentiality.

When an embedded @Remote is not enabled, the device may be monitored by an @Remote Appliance.

In the standard configuration, embedded @Remote will send its meter data through a connection through the LAN. In the event that this device is not connected to the LAN or if the customer does not want to send meter data across the LAN, this model offers an optional modem. The optional modem type can be used to send meter data through a phone line. The modem is available as an option. See the price list for cost and pricing. The optional modem is not available for all models that offer embedded @Remote.

Savin C6055/C7570

Embedded @Remote Cost

Embedded @Remote's automated reading and reporting feature is included in the device at no additional cost. It is suggested that the automated meter reading service should be offered to the customer at no charge. Please consult with your management to obtain their direction on this matter. Just consider the impact to the customer if they are comparing two competitive MFP proposals that are very similar in cost. Consider also that only one proposal, yours, includes automated meter reporting for no incremental cost. Which proposal will have more value to the customer? Which proposal will they be likely to select? Clearly the proposal that includes no-cost meter reading and reporting will have a distinct advantage.

Since embedded @Remote does not provide access to online fleet reporting, there is no access to the service and no associated fee for that service.

Customer Profile for Embedded and Appliance

@Remote Type	Account Type	Account characteristics	Customer requirements
RC Gate Appliance	Mid to Large	a) 5 or more Savin MFPs connected to the network OR b) 20 or more other MFPs or printers connected to the network	a) Need to develop print management strategy b) Want to have fleet utilization reporting c) Need help to optimize fleet and reduce document production costs
Embedded Type	Small	(1) to (4) Savin MFPs connected to the network	a) Need to simply automate meter reading now b) Customer does not need a print management strategy or fleet reporting due to their small size

The chart shown above describes the positioning of embedded @Remote relative to the @Remote Appliance. As the chart shows, the embedded type is intended for accounts that have only a few devices on the network. Embedded @Remote should be proposed when the customer does not have a sufficient number of networked devices to warrant fleet utilization reporting. The key point to help you decide whether to propose the Appliance or embedded type is the size of their networked fleet including Savin and competitive devices. For example, if the account needs only two (2) of your MFPs, then propose the embedded type. Conversely if the account needs two (2) of your devices AND they have 20 other devices on the network, they can benefit from and need Fleet Reporting, so propose the @Remote Appliance.

Comparison of Embedded @Remote Type and the @Remote Appliance Type

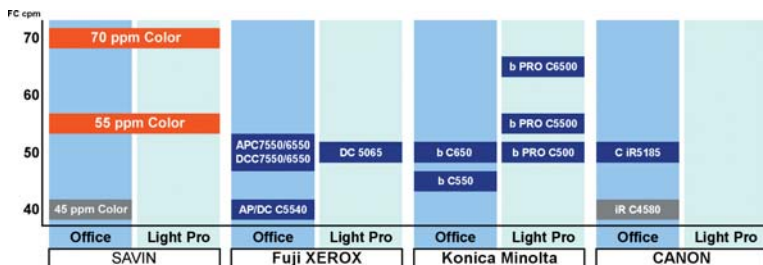
Features and Functions	RC Gate Network Appliance	Embedded Type
Furnish meter data	Yes	Yes
Gather meters of neighboring network devices and report	Yes Up to 500 Network Devices	No
Furnish meter data for fleet reporting	Yes	No Fleet Reporting
ISO 15408 /Common Criteria Security certification	Yes (pending)	No
Automated Service Call Notification	Yes for Savin Compatible devices	Yes
Toner Level Status Reporting	Yes for Savin Compatible devices	Yes
Remote Firmware Upgrade	Yes for Savin Compatible devices	Yes

Savin C6055/C7570

ASSESSING THE COMPETITION

As Savin continues to grow its product portfolio, you are better positioned to seize market share from competitors. As a result, you will find yourself competing against a wide range of color and black & white MFPs from other vendors. You will also be competing in different environments, including larger offices, workgroups and departments, as well as light production operations.

The chart below provides a graphic look at the competitive landscape for the C6055/C7570.



Full information about each of the competitive offerings and how the C6055/C7570 stack up can be found in the Competitive Guide that is included as part of the launch kit.

XEROX

Xerox offers two color product families in eight configurations that compete with the C6055 and C7570. These two product families are differentiated by their front-end controller, sharing common engines.

In the DocuColor family, these include the DC242/252/260 series, which operate at 55/40, 65/50, and 75/60 ppm, respectively (BW/FC). These products include some “heavy” specifications for the Production environment, such as support for 300 gsm paper weight and 13-inch paper handling. Xerox touts is 2400dpi resolution and positions these systems as lower volume alternatives to its more expensive DC 8000 systems. In general, the DocuColor family will carry a higher price point and is more frequently sold into the light production or product environment.

For the office environment, Xerox offers the WC7655/7665/7675 Work Centre series, which is based on the same engine as the DC 242/252/260. This is a “lighter” model, than the DocuColor series, and more geared toward office use. Xerox brought the Work Centre series to market at a dramatically lower price than the DocuColor series, with a Xerox controller, to make it more appealing for general office use.

KONICA MINOLTA

Konica was first to market with a high-speed color MFP in 2002. After Konica and Minolta merged, Konica Minolta began offering this product as the bizhub PRO C500. This machine has a printing speed of 50/50 ppm (BW/FC). The target market for this device was clearly the light production market. The bizhub Pro C500 is able to handle 13-inch paper, and offers peripherals like an A3 large capacity tray (LCT), a Folding unit, and Trimmer. It also offers an EFI controller and an EFI server option. This has been a popular product, especially in the U.S., and there are over 10,000 of these units in the field. As these units age, many customers may be looking to replace them and will find the C7570 very appealing with its faster speeds and enhanced finishing options.

Konica Minolta also offers a heavier model, the Bizhub PRO C5500 and C6500. These machines operate at 55/55 and 65/65 ppm, respectively. They have a large user interface, higher durability and a wider variety of options (for example, A3, bigger LCT, various folding options, and Trimmer). Konica Minolta will be focusing on the production market with this product as well. For the office market, Konica Minolta offers the bizhub C550 and bizhub C650, which operate at 55/45 ppm and 65/50ppm, respectively, and use a new mid-segment engine platform.

CANON

For a long time, Canon did not have a high-speed color product to compete with Savin, Xerox, and Konica Minolta.

Now Canon has introduced the Color iRC5185 with 51 ppm/51 ppm. This machine is geared towards the office environment, although Canon has attempted to sell it into production environments. Again, the higher speed and enhanced finishing capabilities of the C6055/C7570 will be attractive to larger offices and light production environments in a face-off against this Canon products.

Introduced in late 2006 and launched in mid-2007, Canon entered the production market with its imagePress C7000, which operates at 70/70 ppm, and has specifications and a price tag aimed at the Production customer. Canon has also OEM'd this product to Kodak for sale into the graphic arts market. The C6055/C7570 do not face off directly against this product. They are rated at different monthly volumes and advanced paper handling capabilities. But especially in light production environments, the more attractive price point of the C6055/C7570 series may offer a competitive advantage.

Savin C6055/C7570

SYSTEM SPECIFICATIONS

General Mainframe Specifications

Dimensions:	29.5x33.5x413", exclude ARDF 29.5x33.5x484", including ARDF
Weight:	Less than 656.3lb, including ARDF
Scanning:	Flatbed with moving 3-line CCD array image scanning
Copy Process:	4-drum dry electrostatic transfer system with internal transfer belt
ARDF:	Standard
Engine Speed:	C6055 - 55ppm color, 60ppm black & white C7570 - 70ppm color, 75ppm black & white
Warm Up Time:	C6055 - Less than 90 seconds C7570 - Less than 75 seconds
First Copy Out Time:	C6055 - Color, less than 7.5 sec Black & white, less than 5.7 sec C7570 - Color, less than 6.4 sec Black & white, less than 4.9 sec
Original Type:	Sheet / Book / Object
Max Original Size:	A3 / 11"x 17"
Resolution	Copy: 600dpi 4bit Print: 600dpi 4bit Scan: 600dpi 8bit
Image-able Size	Default: 297 (+4) x 457mm Max: 297 (+4) x 600mm
Magnification	7 Reduction & 5 Enlargement: 93%, 85%, 78%, 73%, 65%, 50%, 25% 121%, 129%, 155%, 200%, 400% Zoom: 25-400%, 1% step
Paper Capacity	1st Tray: 1,100 x 2 Sheets (20lb Bond paper) 2nd Tray: 550 Sheets 3rd Tray: 550 Sheets Bypass Tray: 100 Sheets Max Capacity: 7,400 Sheets (With 4,000 sheet LCT Option) Original Size Detection: 11"x17" SEF, 8 1/2"x14" SEF, 8 1/2"x11" LEF/SEF
Paper Weight	1st Tray: 80lb Bond - 80lb Cover 2nd Tray: 80lb Bond - 80lb Cover 3rd Tray: 80lb Bond - 80lb Cover Bypass Tray: 80lb Bond - 110lb Cover Duplex Unit: 80lb Bond - 90lb Index Output Capacity with Copy Tray: 500 Sheet, 8 1/2"x11"/A4

Power Specification

C6055: 120V / 20A / 60Hz
C7570: 208-240V / 20A / 60Hz

Max Power Consumption

C6055: Less than 1,920W
C7570: Less than 2,400W
Counter: Electric counter & Mechanical counter x 2
Counterfeit Prevention: Bill Recognition & Invisible Marking Function

Controller

CPU:	Intel Pentium 1.4GHz
RAM:	1,536MB
Hard Disk Drive:	320GB (160GB x 2)
PDLs:	RPCS, PCL 5c/XL emulation; optional Adobe PostScript® 3
Resolution:	600 x 600dpi
Fonts:	PCL Truetype: 10 fonts, Intelli: 35 fonts; International fonts: 13 Intelli fonts
Print Drivers:	RPCS: Windows 95/98/Me/NT 4.0/2000/XP/Server 2003
PCL 5c:	Windows 95/98/Me/NT 4.0/2000/XP/Server 2003 PostScript: Windows 95/98/Me/NT 4.0/2000/XP/Server 2003, Macintosh 8.6 - 9.2.X (OS X Classic); OS X v10.1, v10.2, v10.3 or later; UNIX: Sun Solaris, HP-UX, SCO OpenServer, RedHat Linux, & IBM AIX
Standard interfaces:	10BaseT/100BaseTX Network Interface Board, USB 2.0
Optional interfaces:	IEEE 802.11b; IEEE 1284ECP Parallel; Bluetooth
Network Protocols:	TCP/IP; IPX/SPX; AppleTalk; SMB (NetBEUI, NetBIOS over TCP/IP); Auto Switching
Utilities:	Web Image Monitor, SmartNetMonitor V2, Desktop Binder V3 Lite, Printer Utility for Mac

Savin C6055/C7570

Scanner

General Features

Optical Resolution:	Default: 200dpi 100, 150, 200, 300, 400, 600dpi
Scan Speed:	FC: 69ipm/Bk: 81ipm
Max Scan Area:	Maximum: 11.7x17inches
Auto Scan Size Detect	
Contact Glass:	Supported
ARDF:	Supported
Original Size	
Standard:	A3 SEF, A4 SEF, A4 LEF, A5 SEF, A5 LEF, B4 SEF, B5 SEF, B5 LEF 11"x17" SEF, 8 1/2"x14" SEF, 8 1/2"x13" SEF, 8 1/2"x11" SEF, 8 1/2"x 11" LEF, 5 1/2"x8 1/2"SEF, 5 1/2"x8 1/2" LEF
Customized:	Minimum: 11.7x17"; 10 x 10mm Maximum: 39x39"; 297 x 432mm
Compression Method:	BW / Binary: TIFF MH/MR/MMR Grayscale / Full Color: JPEG (5 levels)
Interface Support:	10/100base-TX, Wireless LAN
Scan Mode	
Default:	BW Text
Support:	BW OCR (inc Drop-out Color), BW Text-Photo, BW Photo, Grayscale Auto Color Selection (ACS), FC Photo, FC Text-Photo
Image Density:	Auto Density Selection, Manual Setting 7 Levels
Image Rotation:	Supported
SADF / Batch Mode:	Supported
Mixed Size Original:	Supported

Scan to Email

Requirement:	SMTP Gateway and TCP/IP
Authentication:	SMTP, POP before SMTP
Resolution	
Default:	200dpi
	100, 150, 200, 300, 400, 600dpi
Resister E-mail Address in HDD:	Max. 2,000 Addresses
Resister Group Address in HDD:	Max. 500 Addresses
	Maximum 100 Addresses in One Group Addresses
Maintain E-mail Address in HDD:	Via Operation Panel, Web Image Monitor, Smart Net Monitor
Search E-mail Address in HDD:	By name & E-mail address
LDAP:	Yes
Max Address Number per Send:	Max 500 Addresses

Address Number per send

via Address Book: Max 500 Addresses
Direct Input: Max 100 Addresses
via LDAP: Max 100 Addresses
Attention: To, cc, bcc

Subject

Manual Input: Max. 128 characters
Pre-resist: 24 Subjects Max 20 Characters per a subject

Body Message

Manual Input: Max. 80 Characters
Pre-resist: 5 Body Message, Max. 80 Characters x 5 lines per body message
Fixed Message: Supported "This e-mail included attached file sent from xxxx"

File Type:

E-mail Size Restriction: 128-102,400KB, Default: On/2,048KB
Single Page TIFF, Single Page PDF, Multi Page TIFF, Multi page PDF, High compression PDF

Program Registration:

Supported, Up to 10 Programs

Divide & Send E-mail:

Supported by Size or Page* Default: On by Size

Resend:

Supported, Default: On

**If file size exceeds maximum e-mail size, it will be divided into multiple e-mails. Also, the sent file might not be accepted by the receiving capacity of the SMPT server.*

Savin C6055/C7570

Scan to Folder/FTP

Protocol Support:	SMB, FTP, NCP
Security:	Client folder log-in -Log-in name and password- Encryption of log-in name and password during transmission
Resolution:	Default: 200dpi 100, 150, 200, 300, 400, 600dpi
Max. Resisted Client Folder Address in HDD:	Maximum 2,000 addresses
Maintain Client Folder Address in HDD:	Via Operation Panel, Web Image Monitor, Smart Net Monitor
Max. Client Folders per send:	Max. 50 client folders per send
Group Address:	Max. 100 destinations (50 client folders)
Subject:	Not supported to input subject
Size Restriction:	No limitation
Size Restriction combined with Scan to e-mail:	Conforming to the scan to e-mail specification
File Type:	Single Page TIFF, Single Page PDF, Multi Page TIFF, Multi page PDF
Program Registration:	Supported, Up to 10 Programs
Resend:	Supported, Default: On

Network TWAIN Driver

Correspondence OS	Windows 95, 98, 98SE, ME Windows NT Server4.0 (SP5 or later) Windows 2000 Server Windows XP, Vista
Resolution:	100-1,200dpi
Scan Mode:	Standard, Photo, OCR, Filing
Image Adjustment:	Brightness, Contrast, Threshold, Gamma Adjustment, Halftone Pattern
Stamp:	Date, Page Number, Text

FAX

General Specifications

Circuit	PSTN, PBX
Compatibility	ITU-T (CCITT) 63, additional 63 (option)
Resolution	200x100dpi (Std) 200x200dpi (Std), 400x400dpi (with optional SFF memory)
Compression method	MH, MR, MMR, JBIG
Scanning speed (DF Used)	.5 sec
Number of Pages	A4/LT SEF Standard mode: 40 cpm
Scanned Per Minutes: (DF Used)	Detail mode: 40 cpm Super Fine mode: 35 cpm
	A4/LT rotation, LEF/image Standard mode: 65 cpm Detail mode: 60 cpm Super Fine mode: 35 cpm
Modem Speed	33.6K - 2,400bps (G3, Standard with Automatic Shift Down) (33,600, 31,200, 28,800, 26,400, 24,000, 21,600, 19,200, 16,800, 14,400, 12,000, 9,600, 7,200, 4,800, 2,400 bps)
Transmission Speed	G3: Approx.2 seconds (200x100dpi, JBIG, ITUT #1 chart TII off, memory transmission) G3: Approx.3 seconds (200x100dpi, MMR, ITUT #1 chart, TII off, memory transmission)
Memory backup:	One hour
Smoothing:	Standard
TII/RTI:	Standard
CSI:	Standard
Quick dial/ Speed dial:	Standard: 2,000 numbers
Group dial: Standard:	100 groups (500 numbers per 1 group)
Program: Standard:	100 numbers
Redial:	Standard
Direct fax number entry:	Standard
Dual access:	Standard
User Code:	Std. 100 Codes (Max. 500 codes with optional "User Account Enhance Unit")
Page counter:	Standard
Auto reduction:	Standard
Wild cards:	Standard
Summer time (daylight saving time):	No
ID code programming:	Standard (4 digits)
Programming by OMR:	No
User function key:	Standard (3 keys)
Night timer:	No
Energy saver:	Standard

Savin C6055/C7570

LCD prompt:	Standard
Remaining memory indication:	Standard
Clock adjustment:	Standard
User parameter setting:	Standard
User data transfer:	Standard

Transmission Specification

Immediate transmission:	Standard
Memory transmission:	Standard
Serial broadcasting	Standard (Max. 500 numbers)
Send later:	Standard
Error correction mode:	Standard
Page retransmission:	Standard
Forwarding:	Standard
Image rotation:	Standard
Book fax:	Standard:
Closed network (transmission):	Standard
Double sided transmission:	Yes
Transmission reserve	No

Reception Specification

Automatic reception:	Standard
Manual reception:	Standard
Substitute reception:	Standard
Authorized reception:	Standard
Multi-copy:	Standard
Closed network:	Standard
Reception time printing:	Standard
Center mark:	Standard
Checked mark:	Standard
Economy printing mode:	No

Internet Fax Basic Specification

Requirement of Mainframe:	G3 fax option is required. Printer Scanner option is required.
Number of Addresses:	2,000
E-mail Address Input:	From LCD operation panel, Web Image Monitor, Smart Device Monitor for Admin
Attention:	“to” or “bcc” (select only one), max 500 attentions
Destination Combination:	Internet Fax + G3 Fax, Internet Fax to PC + G3 Fax
Network:	LAN: Local Area Network Ethernet/10Base-T, 100Base-TX, IEEE802.11b (wireless LAN)
Transmit function	E-mail
Scan line density:	200 x 100dpi (Standard character), 200 x 200dpi (Detail character), 200 x 400dpi (Fine character: optional) *1, 400 x 400dpi (Super Fine character: optional)
Original size:	Scanning width: A3 *1, B4 *1, A4
Communication Protocols:	Transmission SMTP, TCP/IP Reception POP3, SMTP, IMAP4, TCP/IP
E-mail format:	Single/Multi-part, MIME Conversion Attached file forms: TIFF-F (MH, MR *1, MMR*1 compression)
Authentication method:	SMTP-AUTH, POP before SMTP, A-POP
Internet communication:	Send and receive e-mail with a computer that has an e-mail address
E-mail send functions:	Automatic conversion of sent documents to e-mail format and e-mail transmission. Memory transmission only.
E-mail receive functions:	Automatic detection and printing of appended TIFF-F(MH) files and ASCII text. Memory reception only.

Savin C6055/C7570

LAN Fax Basic Specification

Paper Size:	Letter (default for NA model) Legal, B5, A5, A3, DLT, B4, A4 (default for EU/Asia model)
Resolution:	Super Fine (400 x 400dpi) Detail (200 x 200dpi) *default Standard (200 x 100dpi)
Gray Scale: (Available only for Win95/98/Me Driver)	Off On normal *default On lighter
Number of Address:	500
OS:	Windows 95/98, Windows Me, Windows NT4.0, Windows2000, Windows XP, Vista (Gray Scale is only available for the driver of Windows95/98, Me)
LAN-Fax Editor support language:	1.English, 2.German, 3.French, 4.Italian, 5.Spanish, 6.Dutch, 7.Swedish, 8.Norwegian, 9.Danish, 10.Finnish, 11.Hungarian, 12.Czech, 13.Polish, 14.Portuguese, 15.Russian, 16.Korean, 17.Traditional Chinese, 18.Simplified Chinese
Condition:	OS need to have the same language.
Memory:	Minimum required for each OS
CPU:	Minimum required for each OS
HDD:	Minimum required for each OS

IP-Fax Specification

Network:	LAN: Local Area Network Ethernet/10base-T, 100base-TX, IEEE802.11b (wireless LAN)
Scan line density:	200 x 100dpi (Standard character), 8 x 3.85 lines/mm, 200 x 200dpi (Details character), 8 x 7.7 lines/mm, 8 x 15.4 lines/mm (Fine character: optional expansion memory required), 400 x 400dpi (Super Fine character: optional expansion memory required) Maximum 16 x 15.4 lines/mm
Original size:	A3 or 11" x 17" (DLT)
Maximum scanning size:	Standard: A3, 11.7x17 inches, 11.7x47.2 inches
Transmission protocol:	Recommended: T.38Annex, TCP, UDP/IP communication, SIP (RFC 3261 compliant), H.323 v2
Compatible machines:	IP-Fax compatible machines
IP-Fax transmission function:	Specify an IP address and send faxes to an IP-Fax compatible fax through a network. Also capable of sending faxes from a G3 fax connected to a telephone line via a VoIP gateway.
IP-Fax reception function:	Receive faxes sent from an IP-Fax compatible fax through a network. Also capable of receiving faxes from a G3 fax connected to a telephone line via a VoIP gateway

Document Server

Data Format

Copy	SAVIN Unique Format
Print	SAVIN Unique Format
Scan	TIFF, JPEG, PDF

Document Server Capacity

HDD Capacity for Document Server	191.8GB
Maximum Stored Documents	3,000 documents
Maximum Pages per Document	2,000 pages / document
Maximum Pages of all stored Documents	15,000 pages

Optional Network Interfaces

Optional fax configuration

IEEE 802.11b Wireless LAN*

Data transmission speeds:	Automatic: 11 Mbps, 5.5 Mbps, 2 Mbps, 1 Mbps; Fixed: 11 Mbps, 5.5 Mbps, 2 Mbps, 1 Mbps
Protocol:	TCP/IP
Frequency:	2,400MHz - 2,497MHz
Channels:	1 - 11 channels
Connection Types:	Infrastructure mode; Ad-hoc mode
Distance between devices:	11 Mbps: 455 feet; 5.5 Mbps: 650 feet; 2 Mbps: 877½ feet; 1 Mbps: 1,300 feet
WEP Encryption Settings:	64 bits (10 digits); 128 bits (26 digits)

Bluetooth Interface*

Specification:	Bluetooth V1.1
Frequency:	2.4 GHz ISM band
Data Transfer Speeds:	1 Mbps
Profile:	Hardcopy Cable Replacement Profile (HCRP),

Note: Requires host PC with PCMCIA slots and 3Com Wireless Bluetooth PC Card 3CRWB6096, or 3Com Wireless Bluetooth USB Adaptor 3CREB96. Also supported by Toshiba PCs with Bluetooth software v1.02.18 or later.

IEEE 1284ECP Parallel Interface*

Supported OS's:	Windows 2000 (service pack 1), Windows XP
-----------------	---

**Only one of these interfaces can be installed at one time.*

Savin C6055/C7570

Enhanced Copier Features

Image Density: Auto Image Density
Manual Selection (9 Levels)

Color Model

Auto Color Selection
Full Color
Black & White
Single Color (Default: 12 colors + Black, User
Color: 15 colors)
Twin-color (Black & Other color, Red & Black)

Copy Mode

Auto Text-Photo Separation (Printed, Glossy, and
Copier photo mode)
Photo (Printed, Glossy, and Copier photo mode)
Text
Map
Pale
Generation
Highlight Pen
Copy Mode
Inkjet (3 modes)

Paper Selection

Auto Paper Selection
1st Tray 2nd Tray
3rd Tray
LCT (LCT option is required)
Bypass Tray

Paper Tray Display

1st Tray LCT
Plain Paper (Not displayed as paper type)
Recycle Paper
Special Paper1
Special Paper2
Color Paper 1
Color Paper 2
Letter Head
Prepunched Paper
Preprinted Paper
Bond Paper
Cardstock
Thin
Plain1

Plain2
Medium thick
Thick Paper 1
Thick Paper 2
Thick Paper 3 (Only for A3/DLT LCT)
2nd & 3rd Tray
Plain Paper (Not displayed as paper type)
Recycle Paper
Special Paper1
Special Paper2
Color Paper 1
Color Paper 2
Letter Head
Prepunched Paper
Preprinted Paper
Bond Paper
Cardstock
Tab stock
Thin
Plain1
Plain2
Medium thick
Thick Paper 1
Thick Paper 2
Bypass Tray
Plain Paper (Not displayed as paper type)
Recycle Paper
Special Paper1
Special Paper2
Color Paper 1
Color Paper 2
Letter Head
Prepunched Paper
Preprinted Paper
Bond Paper
Cardstock
Tab stock
Translucent Paper
OHP
Thin
Plain1
Plain2
Medium thick
Thick Paper 1
Thick Paper 2
Thick Paper 3

Magnification

Auto Magnification Select
Preset Reduce & Enlarge
Zoom (25%-400%)
Size Magnification
Directional Magnification (by %)
Directional Size Magnification (mm / Inch)
Full Image Copy (93% & centering)

Duplex

1 side to 2 side
2 side to 2 side
Book to 2 side
Front & Back to 2 side

Book / Series / Combine

Book:

Booklet
Magazine

Series

Book to Simplex
Book to Duplex
Front & Back to 2 sided

Combine

Combine 2,4,8 into 1 simplex sheet
Combine 4,8,16 into 1 duplex sheet

Orientation: Supported

Margin Adjustment: 1mm step / 0-30mm

Default:

Front Page 5mm left
Back Page 5mm right

Erase

Center: 1mm step / 2-99mm (Default: 10mm)
Border: 1mm step / 2-99mm (Default: 10mm)
Center-Border: 1mm step / 2-99mm (Default:
Center 10mm, Border 10mm)

Cover / Slip Sheet

Front: Copy or Blank (Copy: Duplex or Simplex)
Front & Back: Copy or Blank (Copy: Duplex or Simplex)
Slip: Copy or Blank
Chapting: Supported (Up to 100 position)
Designation: Copy or Blank (Up to 100 position)
Insert Seat: Supported
Image Rotation: Supported (A4, 8 1/2"x11" and B5 size)

Electronic Sort

Electric Sort: Supported
Rotate Sort: Supported
Shift Sort: Supported with Finisher
Electric Stack: Supported with Finisher
Stapling: Supported with Finisher

Edit

Color Creation

Color Conversion
Color Erase
Color Background

Image Creation

Repeat
Double Copy
Mirror
Positive / Negative
Centering
Scan Position
3 Edge Full Bleed

Stamp

Preset Stamp: 8 stamps / RGBCMYK
User Stamp: 5 stamps / RGBCMYK
Date Stamp: 5 stamps / RGBCMYK
Page Numbering: 6 stamps / RGBCMYK
Stamp Text: Supported
Background Numbering: Supported

Savin C6055/C7570

Image Adjustment

Color Adjustment

Color Balance Adjustment

Color Balance Program

Auto Color Calibration

Color Registration

Image Adjustment

Sharp / Soft

Contrast

Background Density Adjustment

Under Color Removal

Auto Color Selection Sensitivity Adjustment

Text-Photo Separation Sensitivity Adjustment

Color Erase Sensitivity Adjustment

Program: 10 Program

User Code: 8 digits / 500 user code

Interrupt Copy: Supported

Auto Start: Supported

Job Preset: 8 Jobs

Sample Copy: Supported

Document Server: Supported

Log in/Log out: Supported

Auto Off Timer: Supported (1-240 minutes)

Energy Saver Timer: Supported (1-240 minutes)

Panel Off Timer: Supported (10-999 seconds)

Copier/Document server Auto Reset Timer:

Supported (10-999 seconds)

Printer Auto Reset Timer: Supported (10-999 seconds)

Scanner Auto Reset Timer: Supported (10-999 seconds)

System Reset Timer: Supported (10-999 seconds)

PERIPHERALS

ARDF

Original Size

Simplex	5½"x8½", 8½"x11", 8½"x14", 11"x17" A3, A4, A5, B4, B5, B6
Duplex	5½"x8 1/2", 8½"x11", 8½"x14", 11"x17" A3, A4, A5, B4, B5

Original Weight

Simplex	11lb - 34lb Bond 40 - 128g/m ²
Duplex	14lb - 34lb Bond 52 - 128g/m ²
Auto Original Size Detection	11"x17" SEF, 10"x14" SEF, 8½"x14" SEF, 8½"x11" SEF/LEF 5½"x8½" SEF/LEF, 7¼"x10 1/2 SEF, A3 SEF, A4 SEF/LEF
Original Set Position:	Left-Rear Corner / Face-up
Special Original Setting:	Batch, Mixed Size
Feeding Speed:	FC: 60ppm BK: 75ppm
Power Source:	From Base-unit
Dimensions W x D x H:	680 x 560 x 180mm
Weight:	19.5kg or less
Power Consumption:	59W or less
Noise:	71dB or less
Stack Capability 80g/m ² , 20lb Bond:	100 Sheets

A3/DLT Large Capacity Tray- RT4000

Weight:	Less than 87kg (inc. adapter)
Paper Size:	A5 - A3, HLT - 12"x18"
Paper Weight:	14lb - 110lb Cover
Paper Capacity:	2,000 sheets
Dimension W x D x H:	970 x 730 x 746mm (inc. adapter)

A4/LT Large Capacity Tray- RT43

Paper Size:	A4, B5 / LEF, 11"x 8½" / LEF
Paper Weight:	14lb - 34lb Bond
Paper Capacity:	4,000 sheets, 2,500 sheets with LG option (20lb Bond)
Dimensions W x D x H:	314 x 458 x 659mm, 462 x 458 x 659mm (with LG unit)
Weight:	Less than 20kg
Power Consumption:	Less than 50W
Noise:	Less than 74dB

Savin C6055/C7570

LG/B4 Tray for A4/LI/LCT-Type 1075

Paper Size:	8½"x14", 8½"x11" SEF, A4 SEF, B4
Paper Weight:	14lb - 34lb Bond

Copy Tray-Type 2075

Paper Capacity:	500 Sheets A4, 8½" x 11" 250 Sheets A3, 11"x 17"
Dimension W x D x H:	329 x 410 x 78mm
Weight:	750g

9-Bins Mail Box-CS391

Number of Bins:	9 bins
Stack Capacity of each Bin:	100 sheets (20lb Bond)
Paper Size:	A5, A4, A3, 5½"x8½", 8½"x11", 8½"x14", 11"x17"
Paper Weight:	14lb - 34lb Bond
Dimension W x D x H:	540 x 600 x 660mm
Weight:	Less than 15kg
Power Consumption:	Less than 48W
Noise:	Less than 74dB

Z folding Unit-ZF4000

Z folding unit is new to the C6000 and C7500 series, and is common to the KATANA/Model MT-C3. This unit can be attached with both the 100 staple Finisher and the 50 staple/saddle stitch finisher.

Configuration:	Console type attached mainframe
Paper Size:	A3, B4, A4 SEF, 11" x 17", 8½" x 14", 8½" x 11" SEF
Paper Weight:	17lb-20lb Bond
Dimensions W x D x H:	177 x 620 x 960mm
Weight:	Less than 55kg
Power Consumption:	Less than 100W
Noise:	Less than 74dB

2-Source Cover Interposer-CI5000

Stack Capability:	200 sheets x 2 trays (20lb Bond)
Paper Size:	11"x17" - 5½"x 8½" A3-A5
Paper Weight:	64 -17 -58lb Bond /110lb index
Original Set Position:	Center
Original Set:	Face-up, i.e. First sheet on top
Dimensions W x D x H:	710 x 730 x 1270mm
Weight:	Less than 45kg
Power Consumption:	Less than 50W

Single-Source Cover Interposer-Type3260

Stack Capability:	200 Sheets (20lb Bond)
Paper Size:	A5-A3, 5½"x8½"- 11"x17"
Paper Weight:	17lb Bond- 110lb Index, 80lb Cover
Original Set Position:	Center
Original Set	Normal Feed: Face-up Saddle Stitch: Face-down
Dimension W x D x H:	500 x 600 x 600mm
Weight:	Less than 12Kg
Power Consumption:	Less than 43W
Noise:	Less than 65db

3000 Sheet Finisher with 100 Sheet Staple-SR5000**Basic Specifications**

Configuration:	Console type attached mainframe
Power Source:	From Mainframe
Output jogger:	Standard

Proof Tray

Stack Capacity (20lb Bond):	500 sheets A4, 8½"x11" or smaller 250 sheets B4, 8½"x14 or larger
Paper Size:	A6 SEF- A3 SEF Max 330x458mm 5½"x 8½" - 11"x 17", Max up to 12"x18"
Paper Weight:	Without Z-folding: 14lb - 58lb Bond
Dimension W x D x H:	800 x 730 x 980mm
Weight:	Less than 75kg
Power Consumption:	Less than 120W
Noise:	Less than 78dB

Savin C6055/C7570

Shift Tray

Stack Capacity (20lb Bond)	3000 sheets: A4 LEF, B5 LEF, 8½"x11" LEF 1500 sheets: A3 SEF, A4 SEF, B4 SEF, B5 SEF, 11"x17" SEF, 8½"x14" SEF, 8½" x 11" SEF 1,000 sheets: 12" x 18" 500 sheets: A5 LEF, 5½"x8½"LEF 100 sheets: A5 SEF, 5½"x8½"SEF
Paper Size	5½"x 8½" - 11"x 17", Max up to 12" x 18" A5 - A3 SEF Max Up to 330x458mm Z-folding A3,B4,A4SEF, 11x17, 8½ x 14 , 8½ x 11SEF
Paper Weight	Bond 16lb- 40lb Cover 50-80lb Index 90-110lb 52 g/m ² - 216g/m ² Z folding Bond 20lb 64-80gms

Staple Specification

Paper Size	A3 - B5, 11"x17" - 8½"x11" Z- folding: A3, B4, 11" x 17"
Paper Weight:	17lb Bond-20lb Bond
Staple Position:	Top, Bottom, 2 Staple, Top-slant
Staple Replenishment:	Cartridge exchange / 5,000 pins per cartridge

	Paper Size	# of Pages per set	# of Sets
Stack Capacity with Stapler	A4, B5	10-100 pages	200-30 sets
	8½"x11"	2-9 pages	150 sets
	A3, B4	10-50 pages	150-30 sets
	11"x17", 8½"x14"	2-9 pages	150 sets

Punch Unit for SR5000

Variety of Punch Unit	NA Punch	2 or 3 holes switchable	
Punch Waste Replenishment	NA 2 holes	10,000 sheets	
	NA 3 holes	10,000 sheets	
Paper Weight	14lb Bond -34lb Bond 52 g/m ² -127.9 g/m ²		
Paper Size	NA 2-holes	SEF	5½"x8½" - 8½"x11" A6 - A3
		LEF	5½"x8½, 8½"x11" A5 - A4
	NA 3 holes	SEF	11"x17" A3, B4
		LEF	8½"x 11" A4, B5

3000 sheet Finisher with 50-sheet staple – SR4010**Basic Specification**

Configuration	Console type attached base-unit	
Proof Tray	Stack Capacity* 80g/m ² , 20lb Bond	250 sheets A4, 8½"x11" or smaller 50 sheets B4, 8½"x14 or larger
	Paper Size	5½"x8½"-11"x17"SEF, 12"x18" SEF A5-A3 SEF, A6 SEF, A6 SEF
	Paper Weight	52 g/m ² -163 g/m ² 14lb Bond-90lb Index
	Stack Capacity* 80g/m ² , 20lb Bond	3,000 sheets 8½"x11" LEF, A4 LEF 1,500 sheets 11"x17" SEF, 8½"x14" SEF, 8½"x11" SEF, 12"x18" SEF A3 SEF, A4 SEF, B4 SEF, B5
Shift Tray	500 sheets	A5 LEF
	100 sheets	5½"x8½"SEF, A5 SEF, B6 SEF, A6 SEF
	Paper Size	5½"x8½"- 11"x17"SEF, 12"x18"SEF A5 - A3 SEF, A6 SEF, B6 SEF
Paper Weight	14lb Bond- 90lb Cover	
	52 g/m ² -300 g/m ²	
Power Source	From base-unit	
Dimension W x D x H	657 x 613 x 960mm	
Weight	Less than 54kg Less than 56kg with Punch Unit	
Power Consumption	96W or less	
Noise	71db or less	

Staple Specification

Paper Size	B5-A3 8½"x11"-11"x17", 12"x18"	
Paper Weight	64 g/m ² -90 g/m ² 17lb Bond-28lb Bond	
Staple Position	Staples Capacity* 80g/m ² , 20lb Bond	Top, Bottom, 2 Staple, Top-slant
	Same Paper Size	50 sheets A4, 8½"x11" or smaller 30 sheets B4, 8½"x14 or larger
	Mixed Paper Size	30 sheets 8½"x11" LEF & 11"x17" SEF A4 LEF & A3 SEF B5 LEF & B4 SEF
Staple Replenishment	Cartridge exchange / 500z	

Savin C6055/C7570

	Paper Size	# of Sheets per set	# of Sets
	A4 LEF	20-50 sheets	150-60 sets
	8½"x11" LEF	2-19 sheets	150 sets
Stack Capacity* with Staple 80g/m2, 20lb Bond			
Same Size	8½"x11" SEF	2-14 sheets	100 sets
	A4 SEF, B5	15-50 sheets	100-30 sets
	Others	15-30 sheets	100-33 sets
		2-14 sheets	100 sets
Mixed Size	8½"x11" LEF & 11" x17" SEF		
	A4 LEF & A3 SEF		
	B5 LEF & B4 SEF	2-30 sheets	50 set

Punch Unit for 50 Sheet Staple Finisher

Variety of Punch Unit	NA Punch	2 or 3 holes switch-able
	EU Punch	2 or 4 holes switch-able
	Scandinavian Punch	4 holes
Punch Waste	NA 2 holes	5,000 sheets
Replenishment	NA 3 holes	5,000 sheets
	EU 2 holes	14,000 sheets
	EU 4 holes	7,000 sheets
	Scandinavian 4 holes	7,000 sheets
Paper Weight		52 g/m ² -163 g/m ²
		14lb Bond - 43lb Bond/90lb Index/60lb Cover
	SEF	5½"x8½" - 11"x17"
	NA 2-holes*	A5 - A3
	LEF	5½"x8½" - 8½"x11"
		A5 - A4
	SEF	11"x17"
	NA 3-holes*	A3, B4
	LEF	8½"x 11"
		A4, B5
	SEF	5½"x8½" - 11"x17"
Paper Size		

Jogger Option for 50 Sheet Staple Finisher

Jogger option jogs paper into a uniform stack.

2000 sheet Finisher with Saddle Stitch staple - SR4020**Basic Specification**

Configuration	Console type attached base-unit
Power Source	From base-unit
Proof Tray	Non Z-folded sheets: 250 sheets A4, 8½"x11" or smaller 50 sheets B4, 8½"x14 or larger Z-folded sheets*: <i>*please attach the support tray included in this finisher</i> 30 sheets B4, 8½"x14 or larger 20 sheets A4, 8½"x11 or smaller
Stack Capacity 80g/m ² , 20lb Bond	Non Z-folded sheets: A5-A3 SEF, A6 SEF, A6 SEF 5½"x8½"-11"x17"SEF, 12"x18" SEF Z-folded sheets: A4SEF-A3SEF, 12"x18"SEF, LT SEF- DLT SEF
Paper Size	Non Z-folded sheets: A5-A3 SEF, A6 SEF, A6 SEF 5½"x8½"-11"x17"SEF, 12"x18" SEF Z-folded sheets: A4SEF-A3SEF, 12"x18"SEF, LT SEF- DLT SEF
Paper Weight	Non Z-folded sheets: 52 g/m ² -163 g/m ² 14lb Bond- 43lb Bond/90lb Index/60lb Cover Z-folded sheets: 64 g/m ² -80 g/m ² 17lb Bond -20lb Bond
Dimension W x D x H	657 x 613 x 960mm
Weight	Less than 63kg Less than 65kg with Punch Unit
Power Consumption	96W or less
Noise	71db or less

Savin C6055/C7570

Basic Specification (cont'd)

Shift Tray		Non Z-folded sheets: 3,000 sheets A4 LEF, 8½"x11" LEF 1,500 sheets A3 SEF, A4 SEF, B4 SEF, B5 11"x17" SEF, 8½"x14" SEF, 8½"x11" SEF, 12"x18" SEF
Stack Capacity	500 sheets A5 LEF	
80g/m ² , 20lb Bond	100 sheets A5 SEF, B6 SEF, A6 SEF, 5½"x8½" SEF	
	Z-folded sheets*:	
	<i>*please attach the support tray included in this finisher</i>	
	30 sheets B4, 8½"x14 or larger	
	20 sheets A4, 8½"x11 or smaller	
	Non Z-folded sheets:	
Paper Size	A5 - A3 SEF, A6 SEF, B6 SEF	
	5½"x8½"- 11"x17"SEF, 12"x18"SEF	
	Z-folded sheets:	
	A4SEF-A3SEF, 12"x18"SEF, LT SEF- DLT SEF	
	Non Z-folded sheets:	
Paper Weight	52 g/m ² -256 g/m ²	
	14lb Bond- 68lb Bond/140lb Index/90lb Cover	
	Z-folded sheets:	
	64 g/m ² -80 g/m ²	
	17lb Bond -20lb Bond	

Staple Specification

Paper Size		Non Z-folded sheets: B5-A3 8½"x11"-11"x17", 12"x18" Z-folded sheets: A4SEF-A3SEF, 12"x18"SEF, LT SEF- DLT SEF
Paper Weight		Non Z-folded sheets: 64 g/m ² -90 g/m ² 17lb Bond-28lb Bond Z-folded sheets: 64 g/m ² -80 g/m ² 17lb Bond -20lb Bond
Staple Position	Same Paper Size	Top, Bottom, 2 Staple, Top-slant 50 sheets A4, 8½"x11" or smaller 30 sheets B4, 8½"x14 or larger 30 sheets A4 LEF & A3 SEF
	Mixed Paper Size	B5 LEF & B4 SEF 8½"x11" LEF & 11" x17" SEF
Staples Capacity*	Z folded paper	5 Z-folded sheets with 0 non Z-folded sheets 4 Z-folded sheets with 0-10 non Z-folded sheets 3 Z-folded sheets with 0-20 non Z-folded sheets 2 Z-folded sheets with 0-30 non Z-folded sheets 1 Z-folded sheet with 0-40 non Z-folded sheets
	Saddle Stitch	15 sheets A4 SEF, A3 SEF, B5 SEF, B4 SEF 8½"x11" SEF, 8½"x14" SEF, 11"x17" SEF 12"x18" SEF
Staple Replenishment		50 Sheet Staple: Cartridge exchange/5,000 pins per cartridge Saddle Stitch Staple: Cartridge exchange / 2,000 pins per cartridge

Savin C6055/C7570

	Paper Size	# of Sheets per set	# of Sets	
Stack Capacity* with Staple	A4 LEF	13-50 sheets	150-40 sets	
	Same Size	8 1/2"x11" LEF	2-12 sheets	150 sets
		A4 SEF, B5	10-50 sheets	100-20 sets
		8/12"x11" SEF	2-9 sheets	100 sets
		Others	10-30 sheets	100-33 sets
			2-9 sheets	100 sets
		No Z-folded sheets	2-30 sheets	50 sets
		A4 LEF & A3 SEF		
		B5 LEF & B4 SEF		
		8 1/2"x11" LEF & 11" x17" SEF		
Stack Capacity* with Saddle Stitch Staple	Mixed Size	With Z-folded sheets	1-5 Z-folded	30-6 sets
		A3 Z-fold + A4		
		B4 Z-fold + B5		
		DLT Z fold + LT		
	A4 SEF, A3 SEF, B5 SEF, B4 SEF	2-5 sheets	30 sets	
	8½"x11" SEF, 8½"x14" SEF,	6-10 sheets	15 sets	
	11"x17" SEF, 12"x18" SEF	11-15 sheets	10 sets	

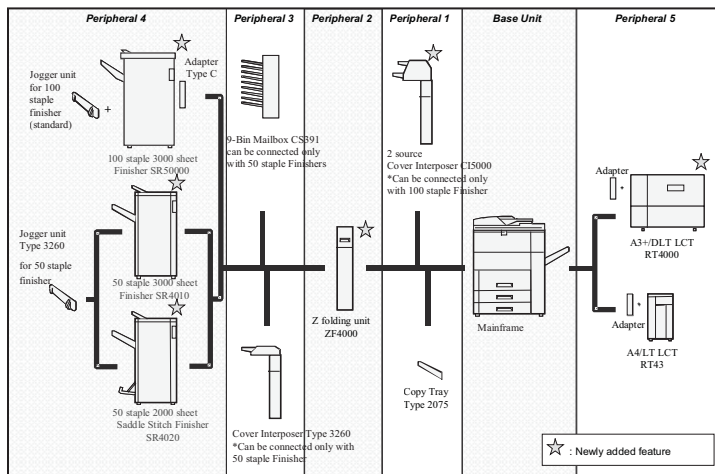
Variety of Punch Unit	NA Punch	2 or 3 holes switchable
Punch Waste Replenishment	NA 2 holes	5,000 sheets
	NA 3 holes	5,000 sheets
Paper Weight	14lb Bond -43lb Bond/90lb Index/60lb Cover	
Paper Size	NA 2-holes*	SEF A5 - A3 5½"x8½" - 11"x17"
		LEF A5 - A4 5½"x8½" - 8½"x11"
	NA 3-holes*	SEF A3, B4 11"x17"
		LEF A4, B5 8½"x 11"

Jogger Option for 50 Sheet Staple Finisher

Jogger option is equipped 50 Sheet Staple/Saddle Stitch Finisher to jog outputs and make them tidy to be stored on the tray.

Savin C6055/C7570

HARDWARE OPTION INTERCHANGEABILITY



Hardware Option

- Punch Unit for 100 sheet finisher SR5000
- LG Unit for RT43 LCT
- Punch Unit for 50 sheet Finisher
- A3/DLT tray kit
- Copy connector
- Tab Sheet Unit
- File Format Converter

Security Option

- HDD Overwrite Security Kit
- Unauthorized copy Guard Unit
- HDD Encryption Unit

Controller Option

- Printer/Scanner Unit (Inc. PictBridge)
- Adobe PostScript3

Network Option

- IEEE802.11a/b/g
- Bluetooth interface unit

Others

- IEEE1284/IEEE1394
- Browser Unit
- JAVA VM Card
- FAX Unit
- G3 Interface unit
- NRS
- Key Counter Bracket
- Key card I/F Option
- Key Card Bracket

- Peripherals in same category cannot be connected together
- Category order should be kept when you connect the peripheral (for example, 2 source interposer cannot be connected after the Z-folding unit)
- 9 bin mailbox and cover interposer can only be connected with 50 staple finishers
- SR5000 requires the Finisher Adapter Type C
- If no finisher is selected you must include the copy tray type 2075
- RT43-A/4 LCT requires the LCT Adapter Type B
- There is only 1 additional slot for an extra network interface

CONSUMABLES AND YIELDS

Toner Yields **

Black - 43,200 prints @ 5% coverage
Cyan - 21,600 prints @ 5% coverage
Magenta - 21,600 prints @ 5% coverage
Yellow - 21,600 prints @ 5% coverage

Staples

50/100 - sheet Staple finishers - 5,000 staples per cartridge
Saddle-stitch Booklet Maker - 2,000 staples per cartridge

**Note: Yields are approximate and are influenced by a number of factors including printer driver, network configuration and PC performance

PRODUCT ORDERING CODES

Product Code	Product Name
413959	Ricoh Aficio MP C6000 Lanier LD260c Savin C6055
413960	Ricoh Aficio MP C7500 Lanier LD275c Savin C7570
412981	Finisher SR5000
413973	Finisher Adapter Type C
412983	Punch Unit PU 5000
413974	Finisher SR4010
413976	Finisher SR4020
412212	Output Jogger Unit Type 3260
412209	Punch Unit Type 3260
412976	Cover Interposer CI5000
412213	Cover Interposer Tray Type3260
413965	LCIT RT4000
002450MIU	RT43 Bundle (includes LCT adapter Type B)
411187	LG Size Tray Type1075
411398	A3/11x17"Tray Type2105
412191	Mail Box CS391
412805	Z-Folding Unit ZF4000
412190	Copy Tray Type 2075
412203	Tab Sheet Holder Type3260
412537	Key Counter Bracket Type1027

Savin C6055/C7570

Product Code	Product Name
412279	Card Reader Bracket Type B
413978	Printer/Scanner Unit Type C7500
414000	PostScript 3 Unit Type C7500
413968	FAX Option Type C7500
413971	G3 Interface Unit Type C7500
412415	Copy Connector Type 3260
414007	File Format Converter Type E
414008	IEEE802.11a/g Interface Unit Type J
411699	IEEE 1284 INterface Board Type A
412866	Bluetooth Interface Unit Type 3245
414021	HDD Encryption Unit Type A
413985	Copy Data Security Unit Type F
414002	DataOverwriteSecurity Unit Type H
414004	VM Card Type F
413012	Optional Counter Interface Unit Type A
414173	Browser Unit Type D
414204	Gigabit Ethernet Type B
400516	Memory Unit Type B 32MB
003187miu	Savin Scan/Print Bundle
003188miu	Savin Scan/Print Bundle
003190miu	Lanier Scan/Print Bundle
413013	Staple Set Cartridge for SR5000 Type M
413026	Staple Refill Cartridge for SR5000 Type M
410801	Staple Set Cartridge for 50 Sheet Stapler Type K
410802	Staple Refill Cartridge for 50 Sheet Stapler Type K
411240	Staple Set Cartridge for Saddle Stitch Stapler Type C
411241	Staple Refill Cartridge for Saddle Stitch Finisher Type C
841084	Print Crtg. MP C7500A Ricoh (Black)
841085	Print Crtg. MP C7500A Ricoh (Cyan)
841086	Print Crtg. MP C7500A Ricoh (Magenta)
841087	Print Crtg. MP C7500A Ricoh (Yellow)
9812	Print Crtg. MP C7500 Savin (Black)
9813	Print Crtg. MP C7500 Savin (Cyan)
9814	Print Crtg. MP C7500 Savin (Magenta)
9815	Print Crtg. MP C7500 Savin (Yellow)
4800459	Print Crtg. MP C7500 Lanier (Black)
4800460	Print Crtg. MP C7500 Lanier (Cyan)
4800461	Print Crtg. MP C7500 Lanier (Magenta)
4800462	Print Crtg. MP C7500 Lanier (Yellow)

savin[®]
www.savin.com



Savin Five Dedrick Place, West Caldwell, NJ 07006

SAVIN[®] is a registered trademark of Ricoh Americas Corporation. Windows[®] and Windows[®] 95/98/ Me/NT4.0/2000/XP/Vista are registered trademarks of Microsoft Corporation. Macintosh[®], Mac[®] OS and AppleTalk[®] are registered trademarks of Apple Computer, Inc. Adobe[®] and PostScript[®] are registered trademarks of Adobe Systems, Inc. PCL[®] is a registered trademark of Hewlett-Packard Company. RPCS[™] is a trademark of Ricoh Company, Ltd. All other trademarks are the property of their respective owners. Print speed may be affected by network, application or PC performance. Specifications and external appearances are subject to change without notice. Products are shown with optional features.

♻️ Printed in U.S.A. on recycled paper. S2593

Free Manuals Download Website

<http://myh66.com>

<http://usermanuals.us>

<http://www.somanuals.com>

<http://www.4manuals.cc>

<http://www.manual-lib.com>

<http://www.404manual.com>

<http://www.luxmanual.com>

<http://aubethermostatmanual.com>

Golf course search by state

<http://golfingnear.com>

Email search by domain

<http://emailbydomain.com>

Auto manuals search

<http://auto.somanuals.com>

TV manuals search

<http://tv.somanuals.com>