

Shark®

WWW.SHARKCLEAN.COM

LIGHT & EASY™ STEAM MOP

S3250W 11

OWNER'S GUIDE




IMPORTANT SAFETY INSTRUCTIONS

SAVE THESE INSTRUCTIONS

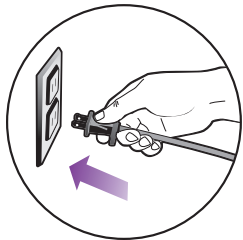
For Household Use Only

WHEN USING YOUR **SHARK®** STEAM MOP, BASIC SAFETY PRECAUTIONS SHOULD ALWAYS BE FOLLOWED, INCLUDING THE FOLLOWING:

WARNING: TO REDUCE THE RISK OF FIRE, ELECTRIC SHOCK OR INJURY READ ALL INSTRUCTIONS BEFORE USING YOUR **LIGHT & EASY™**.


 **DANGER OF SCALDING.** Please use caution when using the steam mop. The steam emitted from the openings is very hot.

POLARIZED PLUG: TO REDUCE THE RISK OF ELECTRIC SHOCK, this appliance has a polarized plug (one blade is wider than the other). As a safety feature, this plug will fit into a polarized outlet only one way. If the plug does not fit fully into the outlet, reverse the plug. If it still does not fit, contact a qualified electrician. **Do not attempt to defeat this safety feature.**



1. Use the system only for its intended use.
2. **DO NOT** use outdoors.
3. **DO NOT** leave the appliance unattended when plugged in. Always unplug the power cord from the electrical outlet when not in use and before servicing.
4. **DO NOT** allow the appliance to be used as a toy. Close attention is necessary when used by or near children, pets or plants.
5. Use only as described in this manual.
6. Use only manufacturer's recommended accessories.
7. **DO NOT** operate the appliance with a damaged plug or cord, or if the unit has been dropped, damaged left outdoors or dropped into water. To avoid the risk of electric shock, do not disassemble or attempt to repair the appliance on your own. Return the appliance to EURO-PRO Operating LLC (see warranty) for examination and repair. Incorrect re-assembly or repair can cause a risk of electrical shock or injury to persons when the appliance is used.
8. To protect against a risk of electric shock, **DO NOT** immerse the steam mop into water or any other liquids.
9. **DO NOT** handle plug or steam mop with wet hands or operate appliance without shoes.
10. **DO NOT** pull or carry by power cord, use power cord as handle, close a door on the power cord, or pull the power cord around sharp edges or corners. Keep power cord away from heated surfaces.

11. **DO NOT** unplug by pulling on power cord. To unplug, grasp the plug not the power cord. Do not use extension cords or outlets with inadequate current carrying capacity.
12. **DO NOT** put any objects into openings. Do not use with any opening blocked.
13. **DO NOT** put hands or feet under the steam mop. Unit gets very hot.
14. Use **ONLY** on flat, stable horizontal surfaces. Do not use on walls, counters, windows, chairs or tables.
15. **DO NOT** use on leather, wax polished furniture or floors, synthetic fabrics, velvet or other delicate, steam sensitive materials.
16. **DO NOT** add cleaning solutions, scented perfumes, oils or any other chemicals to the water used in this appliance as this may damage the unit or make it unsafe for use. If you live in a hard water area, we recommend using distilled water in your steam mop.
17. When in use, NEVER turn the appliance over or on its side. **NEVER DIRECT STEAM TOWARDS PEOPLE, ANIMALS OR PLANTS.**
18. Carefully remove the micro-fiber pad immediately after you have unplugged and allowed the product to cool.
19. When cleaning the steam mop, unplug the power cord from the electrical outlet and clean with a dry or damp cloth. Do not pour water or use alcohol, benzene or paint thinner on the unit.
20. To reduce the risk of fire, **DO NOT** use a flammable or combustible liquid to clean a floor.
21. Extreme caution should be exercised when using this appliance to clean stairs.
22. Never use steam mop without micro-fiber pad attached.
23. Keep your work area well lit.
24. Store steam mop indoors in a cool, dry place.
25. To avoid circuit overload, do not operate another appliance on the same socket (circuit) as the steam cleaner.
26. If an extension cord is absolutely necessary, an extension cord rated a minimum of 15 ampere, 14 gage cord should be used. Cords rated for less amperage may overheat. Care should be taken to arrange cord so that it cannot be pulled or tripped over.
27. **DO NOT** leave unattended when the system is connected to a power supply or electrical outlet. Turn off all controls before unplugging the unit.
28. **DO NOT** store unit with damp or wet micro-fiber cleaning pad attached. Never leave the steam mop in one spot on any surface for any period of time with a damp or wet micro-fiber cleaning pad attached as this will damage your floors.

 **WARNING:** Your steam mop is designed to clean hard floor surfaces that will withstand high heat. Do not use on unsealed wood or unglazed ceramic floors. On surfaces that have been treated with wax or some no wax floors, the sheen may be removed by the heat and steam action. It is always recommended to test an isolated area of the surface to be cleaned before proceeding. We also recommend that you check the use and care instructions from the floor manufacturer.



TOLL FREE: 1-800-798-7398

www.sharkclean.com

Quick Start

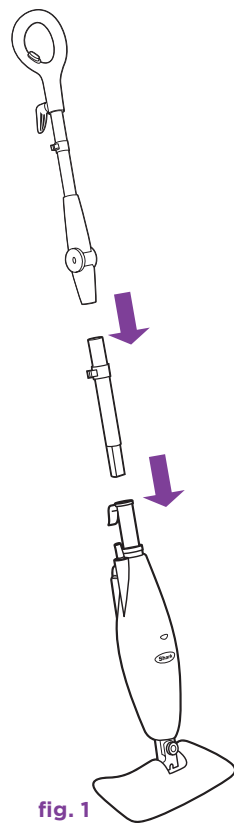


fig. 1

ASSEMBLE

- 1 Fit the extension tubes together as shown in the illustration. (fig. 1)
- 2 Place the micro-fiber cleaning pad underneath the mop head, with quick fastener strips facing up. Simply press the mop to the pad to attach it. (fig. 2)

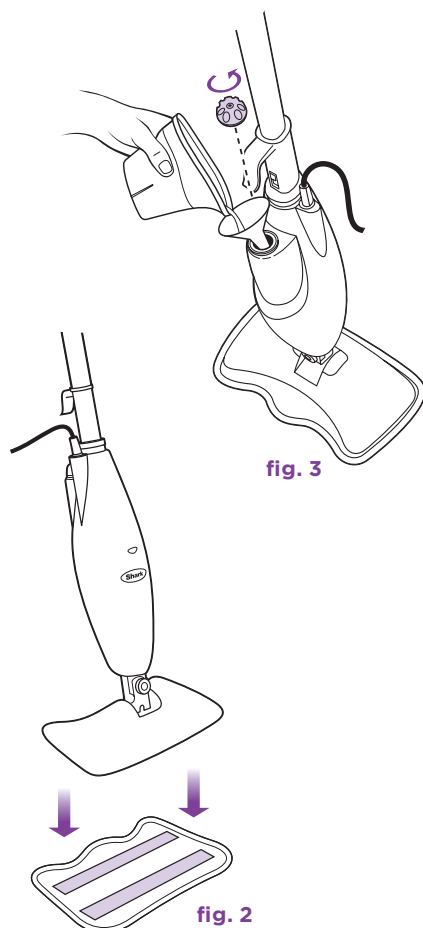


fig. 3

fig. 2

FILL

- 3 Remove the cap to fill the water tank. Use the filling flask and funnel to fill the tank with water to the "MAX" fill line. Replace the water tank cap. (fig. 3)

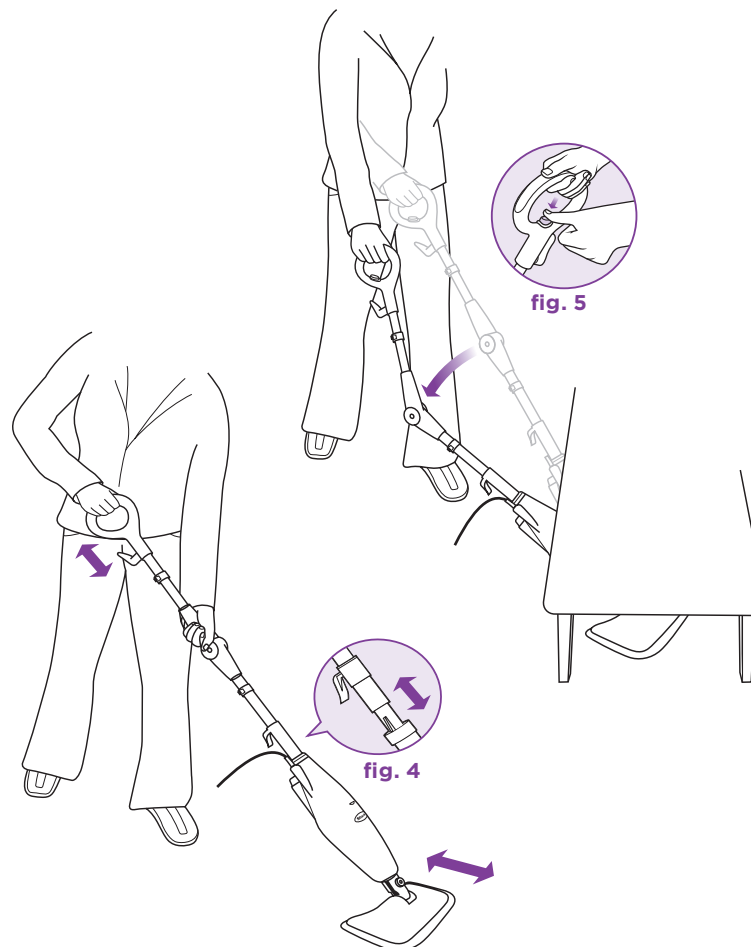


fig. 4

fig. 5

STEAM CLEANING

- 4 Plug in the mop. Wait 30 seconds for the unit to heat up and the steam to be ready. Push the handle toward the mop head in a pumping motion. Customize steam output by slow or fast mopping with a forward and backward motion. (fig. 4)

BACKSAVER

- 5 Use the Shark® Light & Easy™ with backsaver benefit to access tight areas. Press the release button on the handle to lock the Light & Easy™ Steam Mop in the backsaver position. Press the release button on the handle again to straighten the handle. (fig. 5)



TOLL FREE: 1-800-798-7398

www.sharkclean.com

Contents

Thank you for purchasing the **Shark®** **Light & Easy™** Steam Mop.

- GETTING STARTED..... 2
- USING YOUR STEAM MOP.....6
- STORAGE AND CARE OF YOUR STEAM MOP 9
- TROUBLESHOOTING11
- WARRANTY AND REGISTRATION.....13

TECHNICAL SPECIFICATIONS

Voltage: 120V., 60Hz.

Power: 1550 Watts

Water

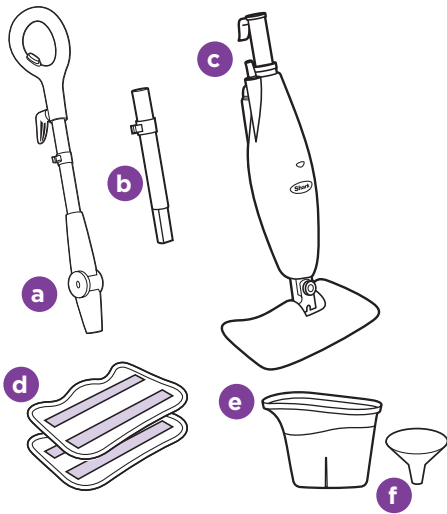
Capacity: 250 ml (8 oz.)



TOLL FREE: 1-800-798-7398

Getting Started

When assembling your steam mop there may be a little water in or around the water tank. This is because we test all our steam mops 100% before you buy them, so you get a quality Shark® Light & Easy™ Steam Mop.



- a** Upper Handle Tube with Backsaver benefit
- b** Lower Handle Tube
- c** Steam Mop Base
- d** 2 All-Purpose Cleaning Pads
- e** Filling Flask
- f** Funnel

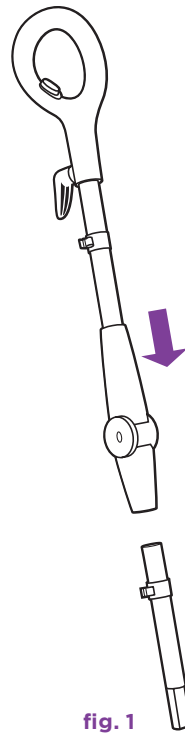


fig. 1

ASSEMBLY

- 1** Remove all the parts from the package. Verify all the listed parts are included.
- 2** Slide the Upper Handle Tube (the tube with the handle) into the Lower Handle Tube (the short tube). Push the two extension tubes together until you hear them click into place. (**fig. 1**)

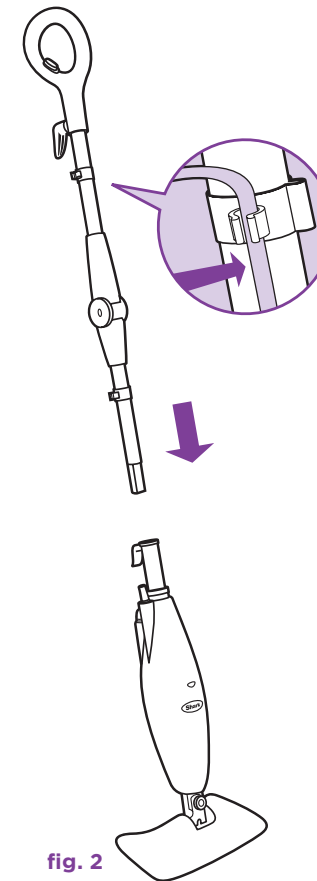


fig. 2

- 3** Insert the assembled handle piece into the steam mop base. Push the tube base together until you hear a click. (**fig. 2**)

⚠ IMPORTANT: Never use the Light & Easy™ Steam Mop without attaching a micro-fiber cleaning pad to avoid damage to your floor and mop.

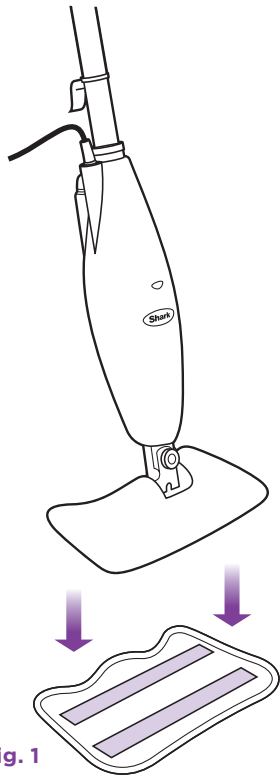


fig. 1

ATTACHING THE MICRO-FIBER PAD

- 1 Place the micro-fiber cleaning pad on the floor with the quick fastener strips facing up. Place the **Light & Easy™** Steam Mop on the top of the pad to attach. (fig. 1)
- ⚠ IMPORTANT:** Only add water to the tank. Chemicals or cleaning solutions may be unsafe or cause damage.

TIPS

Your micro-fiber cleaning pads should be replaced every 3 months to maximize cleaning performance.

Replacement micro-fiber pads are available at www.sharkclean.com or by calling **1-800-798-7398**.

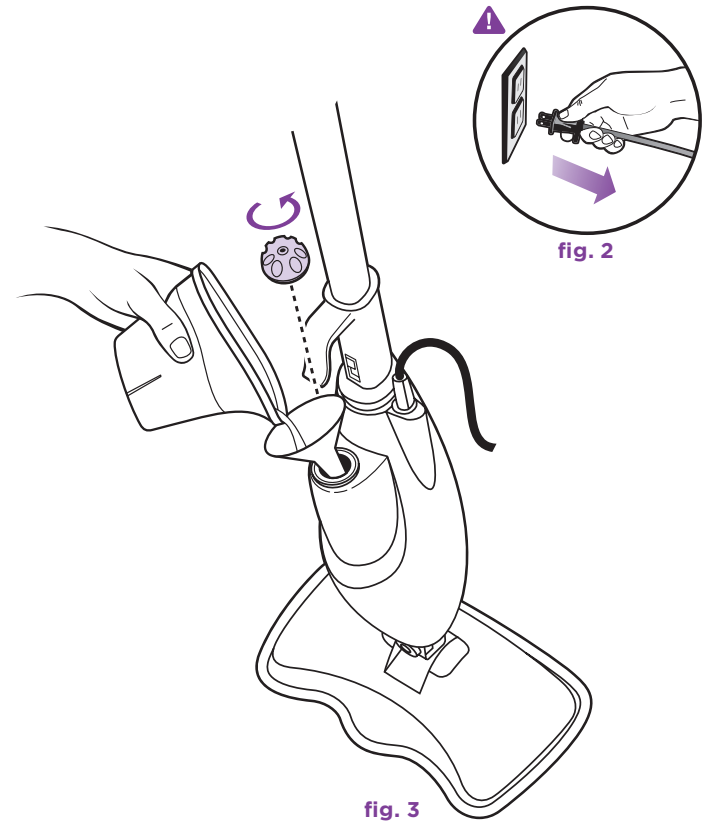
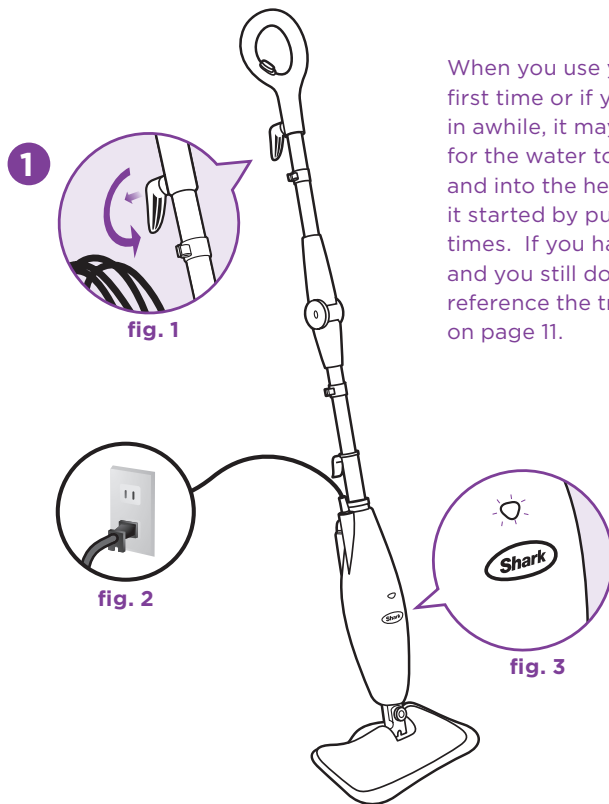


fig. 3

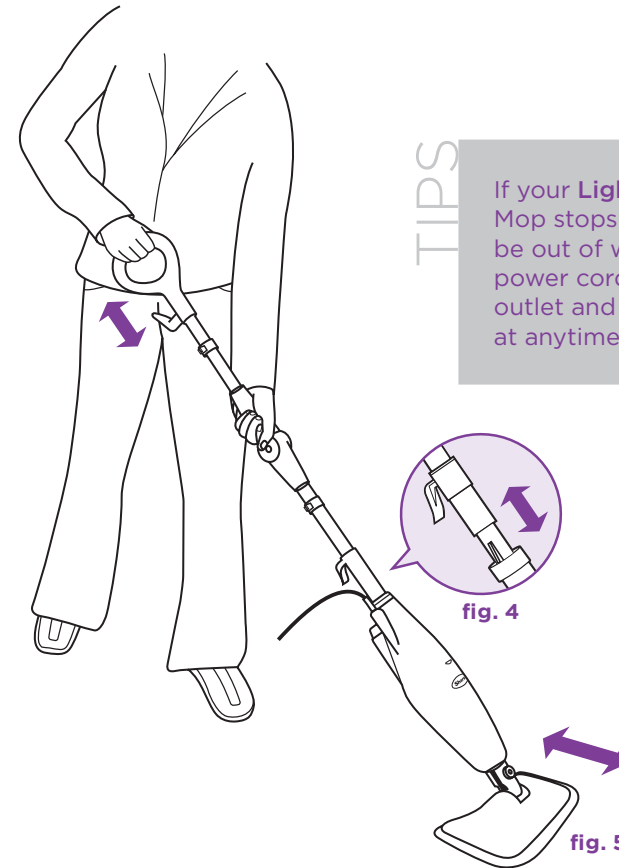
FILLING THE WATER TANK

- ⚠ IMPORTANT:** Unplug the **Light & Easy™** Steam Mop before filling the water tank with water. (fig. 2)
- 1 Remove the water tank cap by turning it counter-clockwise to the unlocked position. (fig. 3)
 - 2 A filling flask and funnel are included with your **Light & Easy™** Steam Mop to make filling the water tank easy. Fill the flask with water and use the funnel to pour it into the tank. Keep the water level under the "MAX" FILL line. (fig. 3)
 - 3 Replace the water tank cap and turn it clockwise to the locked position.

Using Your Light & Easy™ Steam Mop



When you use your steam mop for the first time or if you have not used the unit in awhile, it may take a minute or two for the water to travel through the pump and into the heater to create steam. Get it started by pumping the handle a few times. If you have waited a few minutes and you still do not see any steam, reference the troubleshooting section on page 11.



TIPS

If your Light & Easy™ Steam Mop stops steaming, it could be out of water. Unplug the power cord from the electrical outlet and refill the water tank at anytime.

▲ IMPORTANT: Your steam mop needs water to make steam! Never use your steam mop without water in the tank.

Sweep or vacuum your floors prior to cleaning with your Light & Easy™ Steam Mop.

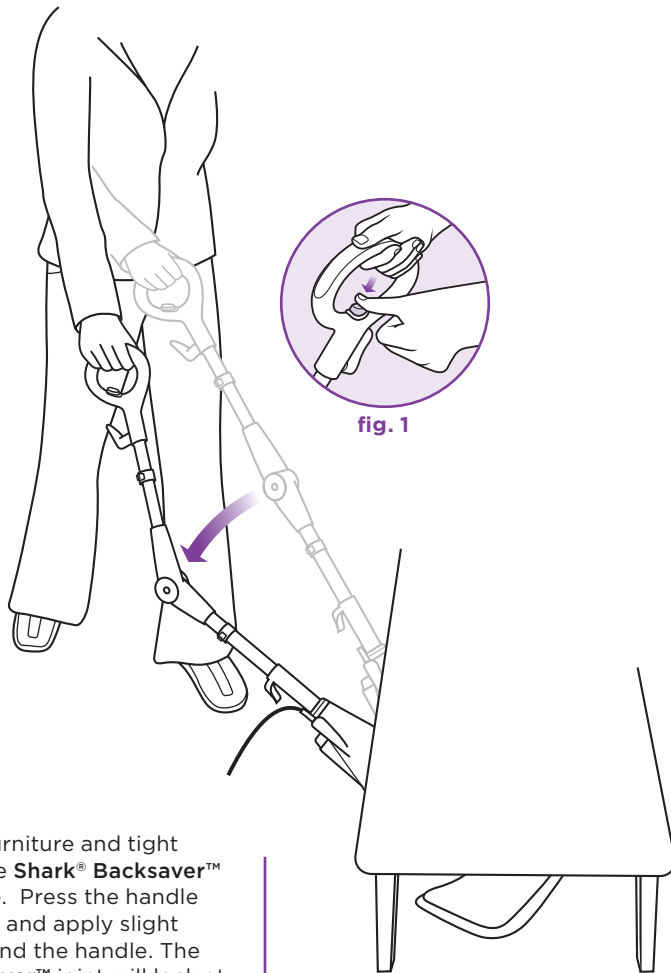
Visit www.sharkclean.com for other great quick cleaning products to complement your Light & Easy™ Steam Mop, such as the Shark® SV800 Cordless Stick Vac.

1 Pull and twist the quick release cord holder to unwrap the power cord completely. (**fig. 1**) Plug into a 120-volt electrical outlet. (**fig. 2**) The “On” light will turn blue. If the light does not turn on, reference the troubleshooting section on page 11. (**fig. 3**)

2 Wait 30 seconds for the boiler to heat the water. Pump the handle a few times to prime the pump, activate steam and moisten the micro-fiber pad. (**fig. 4**)

3 Mop with a forward and backward motion to customize steam output automatically. (**fig. 5**)

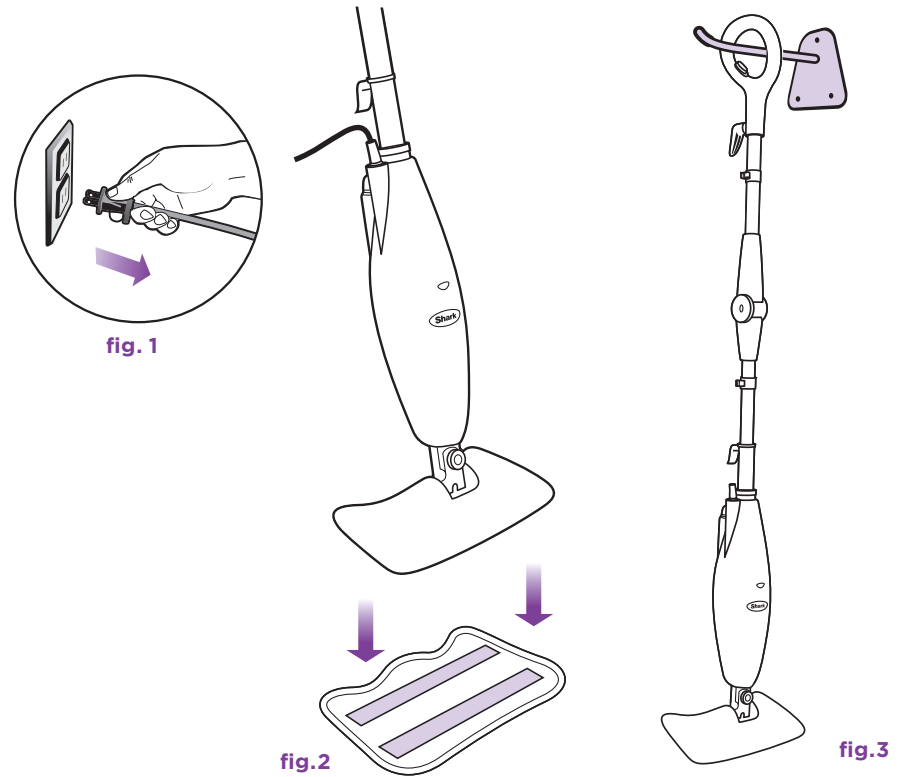
Using Your Light & Easy™ Steam Mop



- 1 Clean under furniture and tight areas using the **Shark® Backsaver™** locking handle. Press the handle release button and apply slight pressure to bend the handle. The **Shark® Backsaver™** joint will lock at a perfect, access-maximizing angle. (**fig. 1**)
- 2 Press the release button on the handle again to straighten.

Care of Your Light & Easy™ Steam Mop

English



- ### AFTER USE AND STORAGE
- 1 When you have finished using the **Light & Easy™** Steam Mop, unplug the cord from the outlet and place the mop into the upright position (**fig. 1**) and let the unit cool 2-3 minutes. Release steam by pumping the handle several times.
 - 2 Carefully separate micro-fiber cleaning pad from steam mop, avoiding contact with the hot pocket or dirt. (**fig. 2**)
 - 3 Empty the water tank before storage. Remove the water tank cap and empty the tank over a sink. Replace the water cap.

- 4 To store the cooled **Shark® Light & Easy™** Steam Mop, hang on a large hook. (**fig. 3**)
- NOTE:** If you want to store the **Light & Easy™** Steam Mop standing upright, make sure it is leaning against a wall for added support and safety. Always store your **Shark® Light & Easy™** Steam Mop with the micro-fiber cleaning pad removed. Store away from children and high traffic areas.

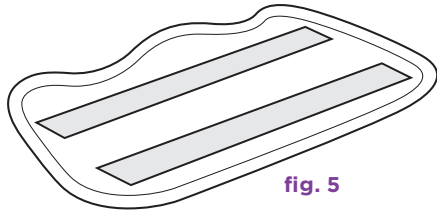


fig. 5

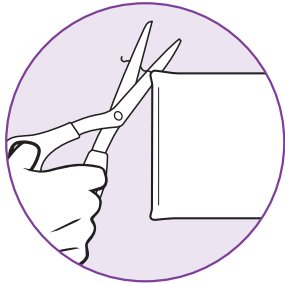
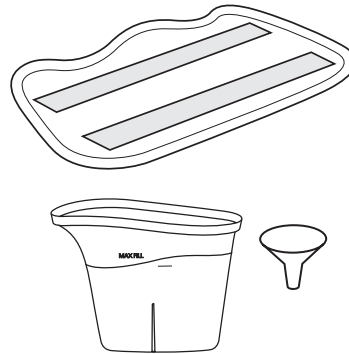


fig. 6

CARE OF YOUR MICRO-FIBER CLEANING PAD

- 1 Wash pads in warm water. Wash separately from other laundry. Only use liquid detergent (no powder detergent). Do not use fabric softeners. Line dry or dry on a low dryer setting. (fig. 5)
 - 2 If there are loose threads on the pad carefully cut the threads with scissors. Do not pull on them or cut at the base. (fig. 6)
- ⚠ IMPORTANT:** The micro-fiber cleaning pad may be very hot from the steam. Use caution when removing. Let the unit cool for 2-3 minutes.



ORDERING REPLACEMENT PARTS

To order additional parts and accessories, feel free to contact us at www.sharkclean.com or call **1-800-798-7398**.

NOTE: Some parts may be available at your local retailer. Contact customer service for any other servicing.

PROBLEM	POSSIBLE REASONS & SOLUTIONS
The Light & Easy™ Steam Mop will not turn-on.	Your steam-mop should be securely plugged into a 120V AC electrical outlet only. Check your fuse or breaker. If your unit still does not work, call 1-800-798-7398 .
Light & Easy™ Steam Mop will not make steam.	Is there water in the water tank? If not, add water to your Steam Mop following instructions on page 5.
Light & Easy™ Steam Mop leaves water on the floor.	Is your micro-fiber cleaning pad too wet? Unplug your Steam Mop and change the micro-fiber cleaning pad.
Light & Easy™ Steam Mop left white spot on the floor.	Do not leave your steam-mop on the floor with a damp or wet cleaning pad. Do you have hard water? If you do, you might want to switch to distilled water. Make sure the water is securely on the water tank.
Floors are cloudy, streaky or spotty after steaming.	The pad might be dirty, change the pad. If you washed the pocket with powder detergent, then the pad may have residual detergent left on it. Wash it again with liquid detergent. If you are cleaning in a kitchen area where there might be a build-up of grease, use a de-greasing agent such as an all-purpose cleaner or dish soap and paper towels to clean the area first. You might have left the mop in the same spot for too long. Do you have hard water? If you do, you might want to switch to distilled water. This might be leftover from past cleaners used on the floor surface. Use the steam mop a few more times and see if the leftover cloudiness is removed.
Light & Easy™ Steam Mop is hard to push.	Make sure the steam pad is attached correctly. Check to see if the cleaning pad is excessively dirty. Replace if the pad is too dirty or wet.

Notes

ONE (1) YEAR LIMITED WARRANTY

EURO-PRO Operating LLC warrants this product to be free from defects in material and workmanship for a period of one (1) year from the date of the original purchase, when utilized for normal household use, subject to the following conditions, exclusions and exceptions.

If your appliance fails to operate properly while in use under normal household conditions within the warranty period, return the complete appliance and accessories, freight prepaid. For Customer Service support, call 1 (800) 798-7398 or visit our website www.sharkclean.com.

If the appliance is found to be defective in material or workmanship, **EURO-PRO Operating LLC** will repair or replace it free of charge. Proof of purchase date and a check made out to **EURO-PRO Operating LLC** in the amount of \$ 9.95 to cover the cost of return shipping and handling must be included.*

The liability of **EURO-PRO Operating LLC** is limited solely to the cost of the repair or replacement of the unit at our option. This warranty does not cover normal wear of parts and does not apply to any unit that has been tampered with or used for commercial purposes. This limited warranty does not cover damage caused by misuse, abuse, negligent handling or damage due to faulty packaging or mishandling in transit. This warranty does not cover damage or defects caused by or resulting from damages from shipping or repairs, service or alterations to the product or any of its parts, which have been performed by a repair person not authorized by **EURO-PRO Operating LLC**.

This warranty is extended to the original purchaser of the unit and excludes all other legal and/or conventional warranties. The responsibility of **EURO-PRO Operating LLC** warranty if any, is limited to the specific obligations expressly assumed by it under the terms of the limited warranty. **In no event is EURO-PRO Operating LLC** liable for incidental or consequential damages of any nature whatsoever. Some states/provinces do not permit the exclusion or limitation of incidental or consequential damages, so the above may not apply to you.

This warranty gives you specific legal rights, and you may also have other rights which vary from state to state or province to province.

***Important: Carefully pack item to avoid damage in shipping. Be sure to include proof of purchase date and to attach tag to item before packing with your name, complete address and phone number with a note giving purchase information, model number and what you believe is the problem with the item. We recommend you insure the package (as damage in shipping is not covered by your warranty). Mark the outside of your package "ATTENTION CUSTOMER SERVICE". We are constantly striving to improve our products, therefore the specifications contained herein are subject to change without notice.**



OWNERSHIP REGISTRATION CARD FOR CANADIAN CONSUMERS ONLY

Please complete and return within ten (10) days of purchase. The registration will enable us to contact you in the event a product defect is discovered. By returning this card you acknowledge to have read and understood the instructions for use, and warnings set forth in the accompanying instructions.

RETURN TO: **EURO-PRO Operating LLC**, 4400 Bois Franc, St. Laurent, Quebec H4S 1A7

PURCHASER:

ADDRESS:

DATE OF PURCHASE: MODEL: **S3250W 11**

NAME AND ADDRESS OF STORE:

U.S.: EURO-PRO Operating LLC
Newton, MA 02459

Canada: EURO-PRO Operating LLC
4400 Bois Franc
Ville St. Laurent, Québec H4S 1A7

1-800-798-7398

www.sharkclean.com

COPYRIGHT© EURO-PRO OPERATING LLC 2010

PRINTED IN CHINA REV. 100505

Illustrations may differ from actual product.

Free Manuals Download Website

<http://myh66.com>

<http://usermanuals.us>

<http://www.somanuals.com>

<http://www.4manuals.cc>

<http://www.manual-lib.com>

<http://www.404manual.com>

<http://www.luxmanual.com>

<http://aubethermostatmanual.com>

Golf course search by state

<http://golfingnear.com>

Email search by domain

<http://emailbydomain.com>

Auto manuals search

<http://auto.somanuals.com>

TV manuals search

<http://tv.somanuals.com>