

# **Shark**<sup>®</sup>

WWW.SHARKCLEAN.COM

---

**PRO PORTABLE  
STEAM POCKET<sup>®</sup>**

---

SC3901W

---

**OWNER'S GUIDE**

---



# IMPORTANT SAFETY INSTRUCTIONS SAVE THESE INSTRUCTIONS

## For Household Use Only

**WHEN USING YOUR SHARK®  
Portable Steam Pocket®,  
BASIC SAFETY PRECAUTIONS  
SHOULD ALWAYS BE  
FOLLOWED, INCLUDING THE  
FOLLOWING:**

**WARNING: TO  
REDUCE THE RISK OF FIRE,  
ELECTRIC SHOCK OR INJURY  
READ ALL INSTRUCTIONS  
BEFORE USING YOUR  
PORTABLE STEAM POCKET®.**

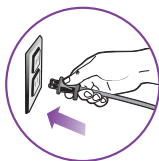


### **DANGER OF SCALDING.**

Use use caution when using the Portable Steam Pocket®. The steam emitted from the Portable Steam Pocket® is very hot.

### **POLARIZED PLUG:**

This appliance has a polarized plug (one blade is wider than the other). As a safety feature, this plug will fit into a polarized outlet only one way. If the plug does not fit fully into the outlet, reverse the plug. If it still does not fit, contact a qualified electrician. **Do not attempt to defeat this safety feature.**



1. Use the system only for its intended use.
2. **DO NOT** use outdoors.
3. **DO NOT** leave the appliance unattended when plugged in. Always unplug the power cord from the electrical outlet when not in use and before servicing.
4. **DO NOT** allow the appliance to be used by children. Close attention is necessary when used by or near children, pets or plants.
5. Use only as described in this manual.
6. Use only manufacturer's recommended accessories.
7. **DO NOT** use with damaged cord or plug. If appliance is not working as it should, has been dropped, damaged, left outdoors, or dropped into water. Return the appliance to EURO-PRO Operating LLC for examination and repair. Incorrect re-assembly or repair can cause a risk of electrical shock or injury to persons when the appliance is used.
8. To protect against a risk of electric shock, **DO NOT** immerse the Portable Steam Pocket® into water or any other liquids.
9. **DO NOT** handle plug or Portable Steam Pocket® with wet hands or operate appliance without shoes.
10. **DO NOT** pull or carry by cord, use cord as a handle, close a door on cord, or pull cord around sharp edges or corners. Do not run appliance over cord. Keep cord away from heated surfaces.



**TOLL FREE: 1-800-798-7398**

Download from [www.Somanuals.com](http://www.Somanuals.com). All Manuals Search And Download.

11. **DO NOT** unplug by pulling on power cord. To unplug, grasp the plug not the power cord. Do not use extension cords or outlets with inadequate current carrying capacity.
12. **DO NOT** put any objects into openings. Do not use with any opening that is blocked.
13. **DO NOT** put hands or feet under the Portable Steam Pocket®. Unit gets very hot.
14. In mop mode use **ONLY** on flat, horizontal surfaces. Do not use on walls, counters or windows.
15. **DO NOT** use on leather, wax polished furniture or floors, synthetic fabrics, velvet or other delicate, steam sensitive materials.
16. **DO NOT** add cleaning solutions, scented perfumes, oils or any other chemicals to the water used in this appliance as this may damage the unit or make it unsafe for use. If you live in a hard water area, we recommend using distilled water in your Portable Steam Pocket®.
17. When in use, NEVER turn the appliance over or on its side.  
**NEVER DIRECT STEAM TOWARDS PEOPLE, ANIMALS OR PLANTS.**
18. **NEVER LEAVE THE PORTABLE STEAM POCKET® IN ONE SPOT ON ANY SURFACE FOR ANY PERIOD OF TIME WHEN MICRO-FIBER PAD IS ATTACHED AS THIS WILL DAMAGE YOUR FLOORS.**
19. Carefully remove the micro-fiber cleaning pad immediately after you have unplugged and allowed the Portable Steam Pocket® to cool.
20. When cleaning the Portable Steam Pocket®, unplug the power cord from the electrical outlet and clean with a dry or damp cloth. Do not pour water or use alcohol, benzene or paint thinner on the unit.
21. Extreme caution should be exercised when using this appliance to clean stairs.
22. Never use Portable Steam Pocket® without micro-fiber cleaning pad attached.
23. Keep your work area well lit.
24. Store Portable Steam Pocket® indoors in a cool, dry place.
25. To avoid circuit overload, do not operate another appliance on the same socket (circuit) as the steam cleaner.
26. If an extension cord is absolutely necessary, an extension cord rated a minimum of 15 ampere, 14 gage cord should be used. Cords rated for less amperage may overheat. Care should be taken to arrange cord so that it cannot be pulled or tripped over.
27. Always unplug and allow the Portable Steam Pocket® to cool before removing or changing mop heads.

**! WARNING:** Your Portable Steam Pocket® is designed to clean hard floor surfaces that will withstand high heat. Do not use on unsealed wood or unglazed ceramic floors. On surfaces that have been treated with wax or some no wax floors, the sheen may be removed by the heat and steam action. It is always recommended to test an isolated area of the surface to be cleaned before proceeding. We also recommend that you check the use and care instructions from the floor manufacturer.

This manual covers model number: SC3901W 11

### **TECHNICAL SPECIFICATIONS**

Voltage: 120V., 60Hz.

Power: 1550 Watts

Water Capacity: 300ml (10.14 oz.)



**TOLL FREE:** 1-800-798-7398

Download from [Www.Somanuals.com](http://www.somanuals.com). All Manuals Search And Download.

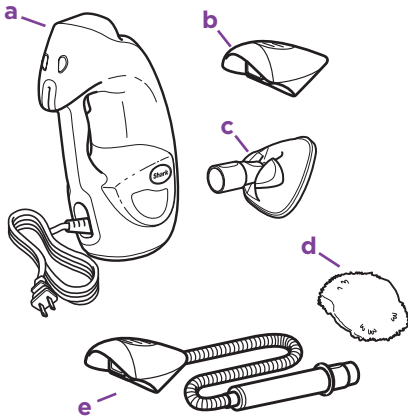
## Contents

Thank you for  
purchasing  
the **Shark®**  
**Pro Portable**  
**Steam Pocket®**.

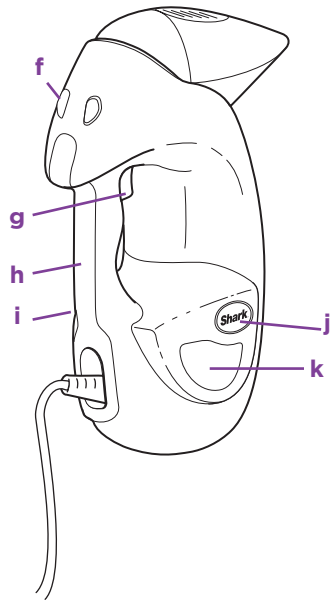
Getting Started .....	2
Using Your Portable Steam Pocket® .....	4
Care of Your Portable Steam Pocket® .....	7
Troubleshooting Guide .....	8
Warranty .....	9
Notes.....	10

## Getting Started

When assembling your Portable Steam Pocket® there may be a little water in or around the water tank. This is because we test all our Portable Steam Pocket®s 100% before you buy them, so you get a quality **Shark® Pro Portable Steam Pocket®**.



- a** Portable Steam Pocket®
- b** Direct Steam Nozzle
- c** Flat Scrubber Tool
- d** All Purpose Scrubbing Pad
- e** Accessory Hose



- f** Attachment Release Button
- g** Steam Trigger
- h** Portable Steam Pocket® Handle
- i** Water Tank Cap (not shown)
- j** Power Light
- k** Water Tank

**Your Shark® Pro Portable**

**Steam Pocket®** is designed to clean surfaces that will withstand high heat and moisture. Do not use on unsealed wood surfaces (especially wooden antique furniture), unglazed ceramic tile, painted surfaces or surfaces that have been treated with wax, oils, varnishes, or shellac. The sheen may be removed by the heat, steam, and friction of the cleaning tools. Lacquer and polyurethane coatings provide a hard durable protective finish that withstands moisture, but it is always recommended to test an isolated area of the surface to be cleaned before proceeding.

We also recommend you check the use and care instructions from the surface manufacturer.

When cleaning finished wood surfaces, use broad, continuous cleaning strokes. To prevent surface damage, avoid focusing steam or allowing the cleaning tools to sit in one spot for any amount of time.

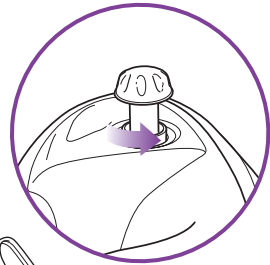


fig. 1

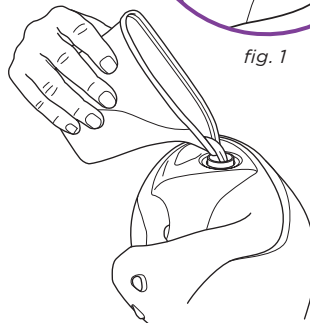


fig. 2

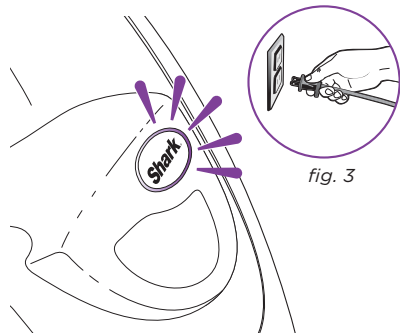


fig. 3

- 1 Turn the water tank cap counter clockwise and remove from the tank. (fig. 1)

Use the filling flask and pour water into the tank. Do not overfill. Replace the cap on the water tank. (fig. 2)

- ⚠ IMPORTANT:** Your Portable Steam Pocket® needs water to make steam! Never use your Portable Steam Pocket® without water in the tank.

- 2 Plug into a 120-volt electrical outlet. The **Power Light** will flash blue. If the light does not turn on, reference the troubleshooting section on page 14. (fig. 3)

- ⚠ NOTE:** To prolong the life of your Portable Steam Pocket®, we recommend using distilled water.

## Using Your Portable Steam Pocket® with Direct Steam Nozzle

**Cleaning Tip:** The Direct Steam Nozzle creates direct steam spray to clean and sanitize hard to reach nooks & crannies and other places where germs may build up. Use the Direct Steam nozzle to loosen and dislodge compact dirt often found in corners and tight places where traditional methods and cleaning tools tend to push dirt into, making it tough to reach and clean. Spray direct steam and wipe clean with a wet cloth or paper towel.

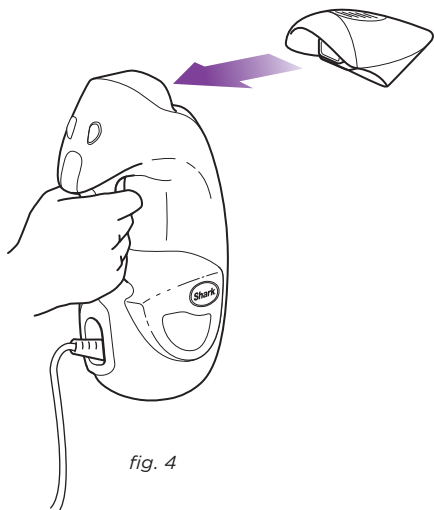


fig. 4

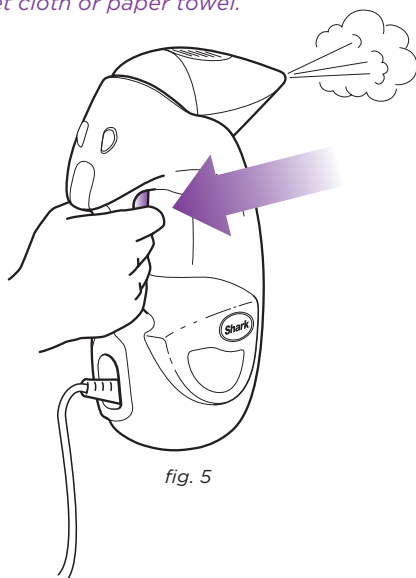


fig. 5

- 1 For spot cleaning and steaming, first attach the Direct Steam Nozzle by pressing the nozzle onto the Portable Steam Pocket® until it clicks into place. (fig. 4)
- 2 Then press and hold the steam trigger button to start steaming. While the steam trigger button is pressed and held down, the **Power Light** will be solid blue. When released, the **Power Light** will return to flashing blue. (fig. 5). For effective cleaning, hold the steam output nozzle 1-2 inches away from the surface you're cleaning.

- ⚠ **CAUTION:** Do not press steam trigger until the Direct Steam Nozzle is snapped into the main nozzle of your Portable Steam Pocket®.
- 3 To remove the Direct Steam Nozzle attachment, press and hold down the release buttons. Then slide off of the handheld steamer.
- ⚠ **CAUTION:** Do not press steam trigger while removing the Direct Steam Nozzle. Avoid touching the tip of the Direct Steam Nozzle, as this will be very hot after steaming.
- ⚠ **NOTE:** The Portable Steam Pocket® may continue to emit steam for a few seconds after the trigger is released. This is normal, and the steaming will eventually come to a stop.



## Using Your Portable Steam Pocket® with Accessory Hose

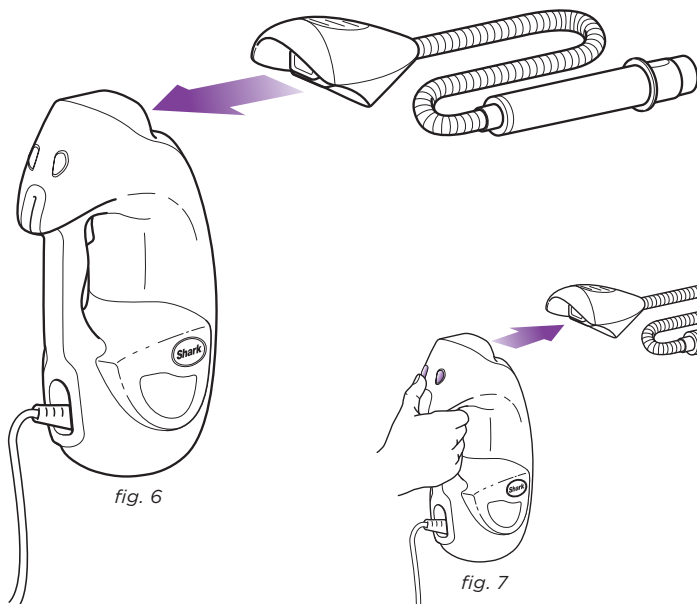


fig. 6

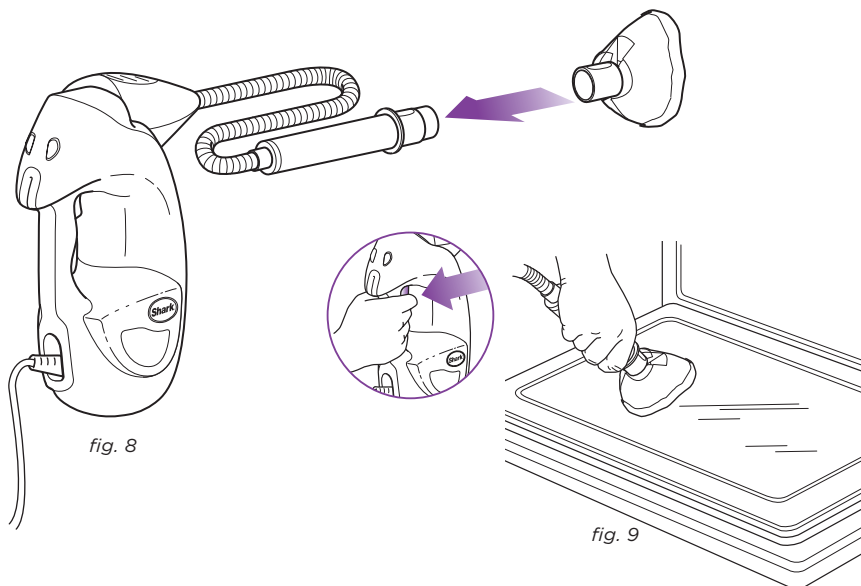
fig. 7

- 1 Attach the Accessory Hose to the Portable Steam Pocket® by snapping the Accessory Hose into the main nozzle. **(fig. 6)**
- 2 Select the desired cleaning tool for use. Follow the cleaning tool sub-assembly instructions for the selected tool.
- 3 To remove the hose, press and hold down the attachment release button. Then the Accessory Hose. **(fig. 7)**

- ⚠ **CAUTION:** Do not press steam trigger while attaching or removing the Accessory Hose.
- ⚠ **CAUTION:** Do not use the Accessory Hose without cleaning tool attached.

## Using Your Portable Steam Pocket® with Flat Scrubber

**Cleaning Tip:** The Flat Scrubber is designed for cleaning a variety of surfaces and is exceptional on those that are large and flat including counter tops, table tops, walls, mirrors, windows, stairs, shelves and other similar surfaces. Super absorbent micro-fiber loosens, lifts, and locks in dirt and grime while sanitizing at the same time.



- 1 To attach the All-Purpose Scrubber pad, pull the pad gently over the Flat Scrubber frame until the pad fits snugly.
  - 2 Press the Flat Scrubber Tool onto the Accessory hose until it clicks into place. (fig. 8)
  - 3 Press and hold the steam trigger to create steam. While the steam trigger button is pressed and held down, the **Power Light** will be solid blue. When released, the **Power Light** will return to flashing blue. (fig. 9).
  - 4 To remove the Flat Scrubber Tool, press and hold down the release button. Then slide the Flat Scrubber off of the hose.
- CAUTION:** Do not press steam trigger while attaching or removing the Flat Scrubber Tool.
- CAUTION:** Do not use the Flat Scrubber without All-purpose cleaning pad attached.

## AFTER USE AND STORAGE

- 1 If you are also done cleaning, unplug the cord from the outlet and place the Handheld Scrubber on a flat surface. Let the unit cool for 2-3 minutes.
- 2 Empty the water tank before storage. Remove the water tank cap and empty the tank over a sink. Replace the water cap. (fig. 10)

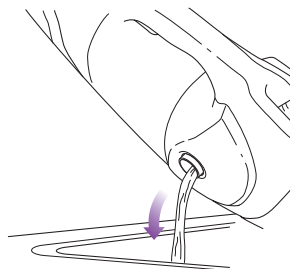


fig. 10



fig.11

## CARE OF YOUR MICRO-FIBER CLEANING PAD

- 1 We recommend washing your micro-fiber cleaning pad separately from other fabrics to avoid picking up lint. **Only use liquid detergent (no powder detergent). Don't use any fabric softeners or bleach.** Line dry or dry on a low dryer setting. (fig. 11)
  - 2 If there are loose threads on the micro-fiber cleaning pad carefully cut the thread with scissors. Don't pull on them or cut at the base.
- ⚠ IMPORTANT:** The micro-fiber cleaning pad may be very hot from the steam. Use caution when removing. Let the unit cool for 2-3 minutes.

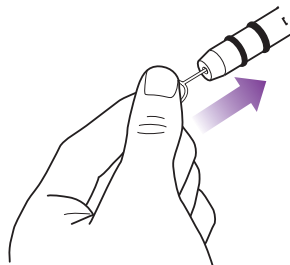


fig.12

## CLEANING THE NOZZLE

- 1 Your Portable Steam Pocket® should not normally require cleaning, however, should you notice a decrease in the steam output, it may be necessary to remove mineral deposits built up around the nozzles.
- 2 Unplug the cleaner from the electrical outlet.
- 3 Use the provided nozzle cleaner or a small diameter stiff metal wire, such as a straightened metal paperclip, and carefully insert the end of the wire into the nozzle orifice. See illustration above. (fig. 12)
- 4 Move the wire back and forth several times to remove any deposits.
- 5 Plug in the appliance to the power outlet and test steam output.

# Troubleshooting Guide

PROBLEM	POSSIBLE REASONS & SOLUTIONS
<p>The <b>Shark® Pro Portable Steam Pocket®</b> will not turn-on.</p>	<p>Your Portable Steam Pocket® should be securely plugged into a 120V AC electrical outlet only.</p> <p>Check your fuse or breaker.</p> <p>If your unit still does not work, call <b>1-800-798-7398</b>.</p>
<p>The unit will not make steam.</p>	<p>Is there water in the water tank? If not, add water to your Portable Steam Pocket® following instructions on page 4.</p> <p>If the unit still does not make steam, follow the instructions on page 13 to clean the nozzle.</p>
<p>The <b>Shark® Pro Portable Steam Pocket®</b> leaves water on surfaces.</p>	<p>Check to see if your micro-fiber cleaning pad is too wet. We recommend you unplug the Portable Steam Pocket® and change the micro-fiber cleaning pad.</p> <p>Make sure the micro-fiber cleaning pad is attached correctly.</p>
<p>The <b>Shark® Pro Portable Steam Pocket®</b> left a white spot on the surface.</p>	<p>Do not leave your Portable Steam Pocket® on the floor with a damp or wet cleaning pad.</p> <p>If you're using tap water, we recommend switching to distilled water.</p> <p>Make sure the cap is securely on the water tank.</p>
<p><b>Surfaces are cloudy, streaky or spotty after steaming.</b></p>	<p>The micro-fiber cleaning pad might be dirty. Flip or change the cleaning pad.</p> <p>If you washed the cleaning pad with powder detergent, then it might be ruined. Replacement pads are available at <a href="http://sharkclean.com">sharkclean.com</a>.</p> <p>This could also be an indication of prior soap or grease residue that has accumulated on the surfaces. As our Portable Steam Pockets use only a small amount of water, it may not be wet enough to rinse off the accumulation that the steam is bringing to the surface. We suggest rinsing the floor with nothing but water, letting it dry, and then steaming again with a clean pad. One or more rinses generally removes the residue.</p> <p>A more stubborn case may require you to rinse the floor with a mix of one part vinegar and two parts water.</p>



# ONE (1) YEAR LIMITED WARRANTY

**EURO-PRO Operating LLC** warrants this product to be free from defects in material and workmanship for a period of one (1) year from the date of the original purchase, when utilized for normal household use, subject to the following conditions, exclusions and exceptions.

If your appliance fails to operate properly while in use under normal household conditions within the warranty period, return the complete appliance and accessories, freight prepaid. For Customer Service support, call 1 (800) 798-7398 or visit our website [www.sharkclean.com](http://www.sharkclean.com).

If the appliance is found to be defective in material or workmanship, **EURO-PRO Operating LLC** will repair or replace it free of charge. Proof of purchase date and \$ 14.95 to cover the cost of return shipping and handling must be included. \*

The liability of **EURO-PRO Operating LLC** is limited solely to the cost of the repair or replacement of the unit at our option. This warranty does not cover normal wear of parts and does not apply to any unit that has been tampered with or used for commercial purposes. This limited warranty does not cover damage caused by misuse, abuse, negligent handling or damage due to faulty packaging or mishandling in transit. This warranty does not cover damage or defects caused by or resulting from damages from shipping or repairs, service or alterations to the product or any of its parts, which have been performed by a repair person not authorized by **EURO-PRO Operating LLC**.

This warranty is extended to the original purchaser of the unit and excludes all other legal and/or conventional warranties. The responsibility of **EURO-PRO Operating LLC** warranty if any, is limited to the specific obligations expressly assumed by it under the terms of the limited warranty. **In no event is EURO-PRO Operating LLC** liable for incidental or consequential damages of any nature whatsoever. Some states/provinces do not permit the exclusion or limitation of incidental or consequential damages, so the above may not apply to you.

This warranty gives you specific legal rights, and you may also have other rights which vary from state to state or province to province.

**\*Important: Carefully pack item to avoid damage in shipping. Be sure to include proof of purchase date and to attach tag to item before packing with your name, complete address and phone number with a note giving purchase information, model number and what you believe is the problem with the item. We recommend you insure the package (as damage in shipping is not covered by your warranty). Mark the outside of your package "ATTENTION CUSTOMER SERVICE". We are constantly striving to improve our products, therefore the specifications contained herein are subject to change without notice.**

## OWNERSHIP REGISTRATION CARD FOR CANADIAN CONSUMERS ONLY

Please complete and return within ten (10) days of purchase. The registration will enable us to contact you in the event a product defect is discovered. By returning this card you acknowledge to have read and understood the instructions for use, and warnings set forth in the accompanying instructions.

RETURN TO: **EURO-PRO Operating LLC**, 4400 Bois Franc, St. Laurent, Quebec H4S 1A7

PURCHASER: .....

ADDRESS: .....

DATE OF PURCHASE: ..... MODEL: **SC3901W 11** .....

NAME AND ADDRESS OF STORE: .....





U.S.: EURO-PRO Operating LLC  
Newton, MA 02459

Canada: EURO-PRO Operating LLC  
4400 Bois Franc  
Ville St. Laurent, Québec H4S 1A7

1-800-798-7398

[www.sharkclean.com](http://www.sharkclean.com)

COPYRIGHT © EURO-PRO OPERATING LLC 2011

PRINTED IN CHINA

SC3901W.E.110225

Illustrations may differ from actual product.



## Free Manuals Download Website

<http://myh66.com>

<http://usermanuals.us>

<http://www.somanuals.com>

<http://www.4manuals.cc>

<http://www.manual-lib.com>

<http://www.404manual.com>

<http://www.luxmanual.com>

<http://aubethermostatmanual.com>

Golf course search by state

<http://golfingnear.com>

Email search by domain

<http://emailbydomain.com>

Auto manuals search

<http://auto.somanuals.com>

TV manuals search

<http://tv.somanuals.com>