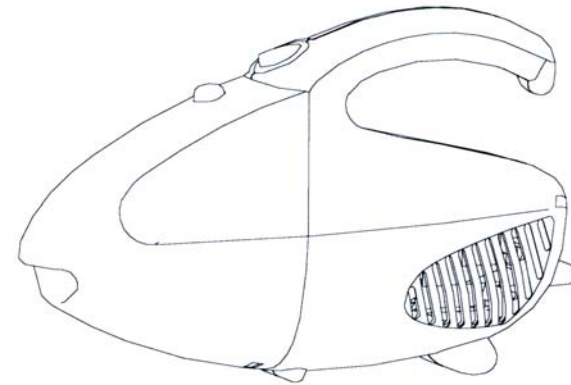


mini **Shark**TM

Hand Vacuum

OWNER'S MANUAL

Model EP031KC
120V., 60Hz.
450 Watts, 3.75 Amps



For information or assistance:
EURO-PRO Operating LLC
94 Main Mill Street, Door 16
Plattsburgh, NY 12901
Tel: 1 866 98SHARK (1 866 987-4275)
www.sharkvac.com

EURO-PRO 

IMPORTANT SAFETY INSTRUCTIONS

When using your **Hand Vacuum**, basic safety precautions should always be observed, including the following:

1. Read all instructions before using your hand vacuum.
2. Use the system only for its intended use.
3. To protect against a risk of electric shock, do not immerse any part of the system in water or other liquids.
4. Never yank cord to disconnect from outlet; instead, grasp plug and pull to disconnect.
5. **Do not** allow cord to touch hot surfaces.
6. **Do not** run appliance over cord.
7. **Do not** operate the system with a damaged cord or plug, or if the appliance or any other part of the system has been dropped or damaged. To avoid the risk of electric shock, do not disassemble or attempt to repair the hand vacuum. Return the system to **EURO-PRO Operating LLC** (see warranty) for examination and repair. Incorrect re-assembly or repair can cause a risk of electrical shock or injury to persons when the unit is used.
8. Close supervision is necessary for any appliance being used by or near children. Do not leave the system unattended while connected.
9. Keep hair, loose clothing, fingers and all parts of body away from opening and moving parts.
10. **Do not** use to pick up flammable or combustible liquids such as gasoline or use in areas where they may be present.
11. **Do not** pick up anything that is burning or smoking such as cigarettes, matches or hot ashes.
12. Use extra care when cleaning on stairs.
13. **Do not** use the hand vacuum without the dust cup filter in place.
14. This appliance is intended only for household use. Follow all user instructions in this manual.

To reduce the risk of fire, electric shock, or injury:

- **Do not** leave the hand vacuum plugged in when unattended. Unplug the electrical cord when not in use and before servicing.
- **Do not** allow to be used as a toy. Close attention is necessary when used by or near children, pets or plants.
- Use only as described in this manual. Use only manufacturer's recommended accessories.
- **Do not** pull cord, use cord as a handle, close a door on cord, or pull cord around sharp edges or corners. Keep cord away from heated surfaces.
- Use **only** extension cords UL-rated or cUL at 15 amperes, extension cords rated for less amperage may overheat. Care should be taken to arrange the cord so that the cord cannot be pulled or tripped over.
- Turn off all controls as applicable before unplugging from electrical outlet.
- **Do not** unplug by pulling on cord. To unplug, grasp the plug, not the cord.
- **Do not** handle plug or hand vacuum with wet hands or operate without shoes.
- **Do not** put any objects into openings. Do not use with any opening blocked. Keep free of dust, lint, hair and anything else that may reduce air flow.
- Store your appliance indoors in a cool, dry area.
- Keep your work area well lit.
- **Do not** immerse the hand vacuum into water or other liquids.
- Keep end of hose, wands and other openings away from your face and body.
- Use only on dry surfaces.
- Using improper voltage may result in damage to the motor and possible injury to the user. Correct voltage is listed on rating label.

SAVE THESE INSTRUCTIONS

For Household Use Only

WARNING: To reduce the risk of electric shock, this appliance has a polarized plug (one blade is wider than the other). This plug will fit in a polarized outlet only one way. If the plug does not fit fully in the outlet, reverse the plug. If it still does not fit, contact a qualified electrician to install the proper outlet. Do not modify the plug in any way.

EP031KC

EURO-PRO 

ONE (1) YEAR LIMITED WARRANTY

EURO-PRO Operating LLC warrants this product to be free from defects in material and workmanship for a period of one (1) year from the date of the original purchase, when utilized for normal household use, subject to the following conditions, exclusions and exceptions.

If your appliance fails to operate properly while in use under normal household conditions within the warranty period, contact **EURO-PRO Operating LLC** customer service at 1 (800) 798-7398 for information on returning the appliance and accessories.

If the appliance is found to be defective in material or workmanship, **EURO-PRO Operating LLC** will repair or replace it free of charge. Proof of purchase date and \$ 8.95 to cover the cost of return shipping and handling must be included. *

Non-durable parts including, without limitation, dust cups, filters and brushes which normally require replacement are specifically excluded from warranty.

The liability of **EURO-PRO Operating LLC** is limited solely to the cost of the repair or replacement of the unit at our option. This warranty does not cover normal wear of parts and does not apply to any unit that has been tampered with or used for commercial purposes. This limited warranty does not cover damage caused by misuse, abuse, negligent handling or damage due to faulty packaging or mishandling in transit. This warranty does not cover damage or defects caused by or resulting from damages from shipping or repairs, service or alterations to the product or any of its parts, which have been performed by a repair person not authorized by **EURO-PRO Operating LLC**.

This warranty is extended to the original purchaser of the unit and excludes all other legal and/or conventional warranties. The responsibility of **EURO-PRO Operating LLC** if any, is limited to the specific obligations expressly assumed by it under the terms of the limited warranty. **In no event is EURO-PRO Operating LLC** liable for incidental or consequential damages of any nature whatsoever. Some states do not permit the exclusion or limitation of incidental or consequential damages, so the above may not apply to you.

This warranty gives you specific legal rights, and you may also have other rights which vary from state to state.

***Important: Carefully pack item to avoid damage in shipping. Be sure to include proof of purchase date and to attach tag to item before packing with your name, complete address and phone number with a note giving purchase information, model number and what you believe is the problem with item. We recommend you insure the package (as damage in shipping is not covered by your warranty). Mark the outside of your package "ATTENTION CUSTOMER SERVICE". We are constantly striving to improve our products, therefore the specifications contained herein are subject to change without notice.**



OWNERSHIP REGISTRATION CARD CANADIAN CONSUMERS ONLY

Please fill out and mail the product registration card within ten (10) days of purchase in order to validate the foregoing Limited Warranty. The registration will enable us to contact you in the unlikely event of a product safety notification. By returning this card you acknowledge to have read and understood the instructions for use, and warnings set forth in the accompanying instructions.

Canada: **EURO-PRO Operating LLC.**, 4400 Bois Franc, St-Laurent, Québec H4S 1A7

Appliance model

Date purchased

Name of store

Owner's name

Address

City

Prov.

Postal Code

TROUBLE SHOOTING GUIDE

PROBLEM	POSSIBLE REASON	POSSIBLE SOLUTION
HAND VACUUM WILL NOT OPERATE	<ol style="list-style-type: none"> 1. Power cord not firmly plugged into outlet. 2. No power in wall outlet. 3. Needs servicing. 	<ol style="list-style-type: none"> 1. Plug unit in firmly. 2. Check fuse or breaker. 3. Replace fuse/reset breaker. 3. Call 1-800-798-7398.
HAND VACUUM WILL NOT PICK-UP OR SUCTION POWER IS WEAK	<ol style="list-style-type: none"> 1. Dust cup is full. 2. Unit clogged. 3. Dust Cup Filter needs cleaning or replacing. 	<ol style="list-style-type: none"> 1. Allow unit to cool down, then Restart. Empty dust cup – (see page 4). 2. Turn unit off and unplug from wall outlet. Remove Dust Cup Filter and check for object(s) in air duct and remove. 3. Clean or replace Dust Cup Filter. (see page 4)
DUST ESCAPING FROM HAND VACUUM	<ol style="list-style-type: none"> 1. Dust cup is full. 2. Dust Cup Filter is not installed correctly. 3. There is a puncture/hole in Dust Cup Filter. 	<ol style="list-style-type: none"> 1. Empty dust cup. 2. Review Dust Cup Filter instructions. (see page 4) 3. Replace dust cup filter. (see page 4)
HAND VACUUM HOSE OR BRUSHES WILL NOT PICK-UP	<ol style="list-style-type: none"> 1. Hose clogged. 2. Dust cup is full. 	<ol style="list-style-type: none"> 1. Remove hose and/or bushes. Remove obstruction from hose. 2. Empty and clean dust cup.

REPLACEMENT FILTERS

Replacement dust cup filter SKU# AKC031 for Model EP031KC

Call: 1-866-98SHARK (1-866-987-4275)
Monday to Friday 8:30 A.M. - 5:00 P.M. Eastern Standard Time

or
visit our website: www.sharkvac.com

FOR TECHNICAL SUPPORT

Call: 800-798-7398
Monday to Friday 8:30 A.M. - 5:00 P.M. Eastern Standard Time

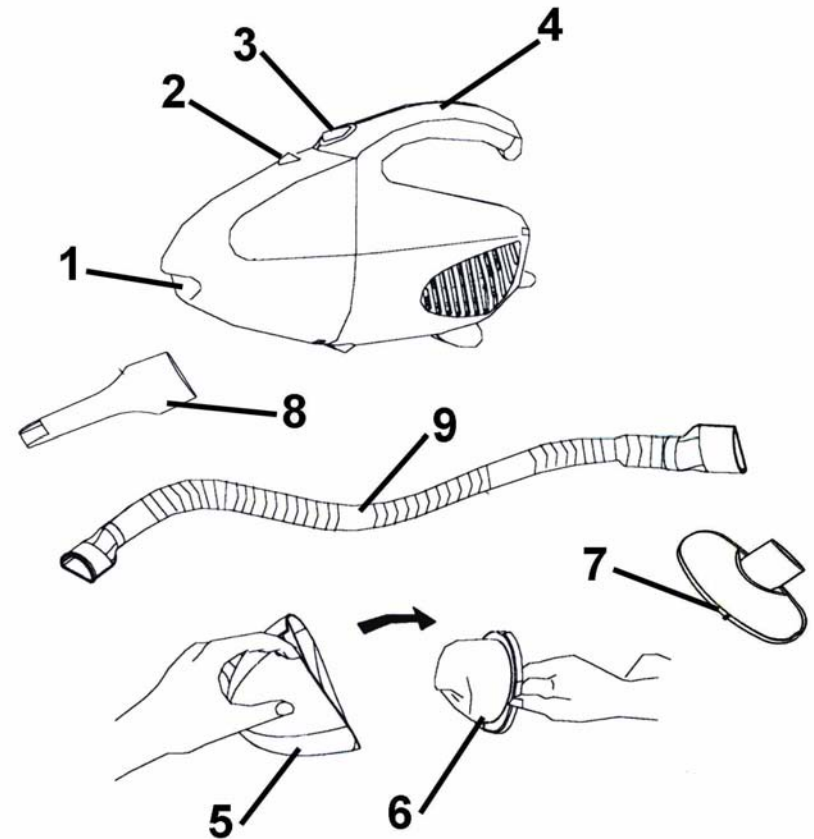
Please Note

The Dust Cup Filter is washable. It should, however, be replaced every three (3) months to ensure peak performance of your vacuum.

Important

Make sure that Dust Cup Filter is completely dry before re-installing back in the hand vacuum.

GETTING TO KNOW YOUR HAND VACUUM



- | | |
|----------------------------|---------------------|
| 1. Suction Hole | 6. Dust Cup Filter |
| 2. Dust Cup Release Button | 7. Upholstery Brush |
| 3. On/Off Power Switch | 8. Crevice Tool |
| 4. Handle | 9. Flexible Hose |
| 5. Dust Cup (Container) | |

Technical Specifications

Voltage: 120V., 60Hz.
Power: 3.75 Amps, 450 Watts

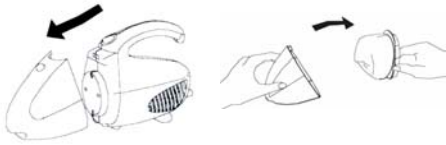
OPERATING INSTRUCTIONS

Warning: Always unplug from electrical outlet before opening the dust cup (container).

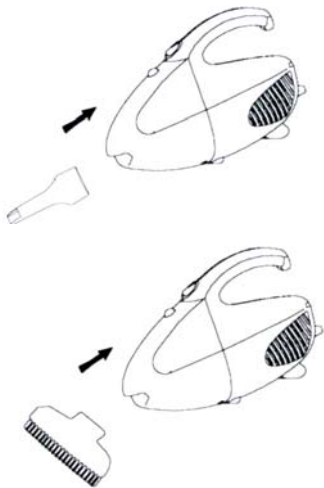
Note: Dust cup filter must be used when operating the hand vacuum.

Assembling the Hand Vacuum

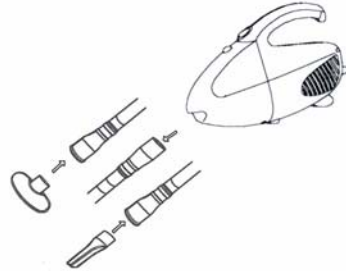
1. To open the dust cup (container), push the dust cup release button and pull out the dust cup. Verify that the dust cup filter is inside, then attach the dust cup (container) to the hand vacuum.



2. To attach the crevice tool or upholstery brush to the Hand Vacuum, push desired accessory into the suction hole, as shown below.



3. To use the flexible hose, push the end of the hose into the suction hole, then attach the desired accessory to the other end of the flexible hose, as shown below.



How To Operate Your Hand Vacuum

1. Hold the hand vacuum firmly in your hand by the Handle.
2. Push the On/Off Power Button to "On" position.
3. Start vacuuming.

CAUTION: The Hand Vacuum is a very powerful unit. Make sure that you hold it firmly, otherwise it can slip out of your hand and cause injury.

OPERATING INSTRUCTIONS cont.

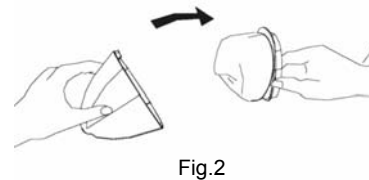
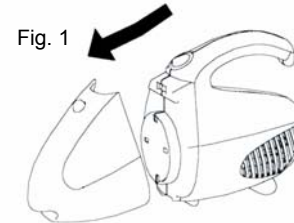
Cleaning & Changing the Dust Cup Filter

Warning: Always unplug the unit from electrical outlet before opening the Dust Cup (container).

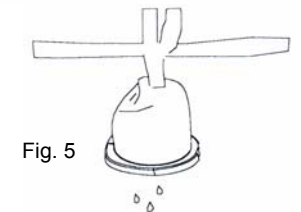
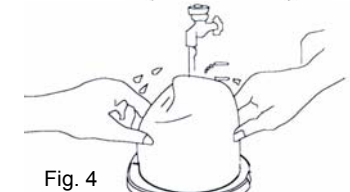
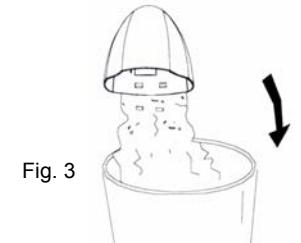
Important: Do **NOT** use the hand vacuum without the dust cup filter in place.

Warning: After each Use - Always remove and empty the Dust Cup Filter.

1. To open the Dust Cup (container), push the dust cup release button and detach the Dust Cup (container). (Fig. 1)
2. Remove the dust cup filter. (Fig. 2)



3. Empty the dust from the dust cup (container). (Fig. 3)
4. Rinse the dust cup filter in cold water and then wait 24 hours until it dries completely before replacing back into the dust cup (container). (Fig. 4 & 5)
5. When the dust cup filter is completely dry, replace the dust cup filter carefully back into the dust cup (container).
6. Attach the dust cup (container) to the Hand Vacuum.



CAUTION: The suction hole must be open, free of any obstructions at all times. Otherwise, the motor will overheat and could become damaged.

Please Note: The Dust Cup Filter is washable. It should, however, be replaced every three (3) months to ensure peak performance of your vacuum.

Important: Make sure that Dust Cup Filter is completely dry before re-installing back in the hand vacuum.

Free Manuals Download Website

<http://myh66.com>

<http://usermanuals.us>

<http://www.somanuals.com>

<http://www.4manuals.cc>

<http://www.manual-lib.com>

<http://www.404manual.com>

<http://www.luxmanual.com>

<http://aubethermostatmanual.com>

Golf course search by state

<http://golfingnear.com>

Email search by domain

<http://emailbydomain.com>

Auto manuals search

<http://auto.somanuals.com>

TV manuals search

<http://tv.somanuals.com>