

SharkTM

Hand Vacuum

OWNER'S MANUAL

Model EP045

120V., 60Hz., 6.67 Amps



EURO-PRO Operating LLC

94 MAIN Mill Street, Door 16

Plattsburgh, NY 12901

Tel.: 1-866-98SHARK (1-866-987-4275)

www.sharkvac.com

Download from Www.Somanuals.com. All Manuals Search And Download.

EURO-PRO X

THREE (3) YEAR LIMITED WARRANTY

EURO-PRO Operating LLC warrants this product to be free from defects in material and workmanship for a period of three (3) years from the date of the original purchase. This warranty applies only to normal domestic household use. Should your appliance fail to operate properly while in use under normal household conditions within the three (3) year warranty period, return the complete appliance and accessories, freight prepaid to **EURO-PRO Operating LLC** at the address given below.

In US: **EURO-PRO Operating LLC**, 94 Main Mill Street, Door 16, Plattsburgh, N.Y. 12901

If the appliance is found to be defective in material or workmanship, **EURO-PRO Operating LLC** will repair or replace it free of charge. Proof of purchase date and \$12.95 to cover the cost of return shipping and handling must be included. * Non-durable parts including, without limitation, dust cup filters, filters, brushes and electrical parts which normally require replacement are specifically excluded from warranty.

The liability of **EURO-PRO Operating LLC** is limited solely to the cost of the repair or replacement of the unit at our option. This warranty does not cover normal wear of parts and does not apply to any unit that has been tampered with or used for commercial purposes. This limited warranty does not cover damage caused by misuse, abuse, negligent handling or damage due to faulty packaging or mishandling in transit. This warranty does not cover damage or defects caused by or resulting from damages from shipping or repairs, service or alterations to the product or any of its parts, which have been performed by a repair person not authorized by **EURO-PRO Operating LLC**. This warranty is extended to the original purchaser of the unit and excludes all other legal and/or conventional warranties. The responsibility of **EURO-PRO Operating LLC** if any, is limited to the specific obligations expressly assumed by it under the terms of the limited warranty. **In no event is EURO-PRO Operating LLC** liable for incidental or consequential damages of any nature whatsoever. Some states do not permit the exclusion or limitation of incidental or consequential damages, so the above may not apply to you. This warranty gives you specific legal rights, and you may also have other rights which vary from state to state.

***Important: Carefully pack item to avoid damage in shipping. Be sure to include proof of purchase date and to attach tag to item before packing with your name, complete address and phone number with a note giving purchase information, model number and what you believe is the problem with item. We recommend you insure the package (as damage in shipping is not covered by your warranty). Mark the outside of your package "ATTENTION CUSTOMER SERVICE". We are constantly striving to improve our products, therefore the specifications contained herein are subject to change without notice.**

IMPORTANT SAFETY INSTRUCTIONS

When using your **SHARK Hand Vacuum**, basic safety precautions should always be observed, including the following:

1. Read all instructions before using your **SHARK** hand vacuum.
2. Use the system only for its intended use.
3. To protect against a risk of electric shock, do not immerse any part of the system in water or other liquids.
4. Never yank cord to disconnect from outlet; instead, grasp plug and pull to disconnect.
5. **Do not** allow cord to touch hot surfaces.
6. **Do not** operate the system with a damaged cord or plug, or if the appliance or any other part of the system has been dropped or damaged. To avoid the risk of electric shock, do not disassemble or attempt to repair the hand vacuum. Return the system to **EURO-PRO Operating LLC** (see warranty) for examination and repair. Incorrect re-assembly or repair can cause a risk of electrical shock or injury to persons when the hand vacuum is used.
7. Close supervision is necessary for any appliance being used by or near children. Do not leave the system unattended while connected.
8. Keep hair, loose clothing, fingers and all parts of body away from opening and moving parts.
9. **Do not** use to pick up flammable or combustible liquids such as gasoline or use in areas where they may be present.
10. **Do not** pick up anything that is burning or smoking such as cigarettes, matches or hot ashes.
11. Use extra care when cleaning on stairs.
12. **Do not** use the hand vacuum without the HEPA dust cup filter in place.
13. This appliance is intended only for household use. Follow all user instructions in this manual.

To reduce the risk of fire, electric shock, or injury:

- **Do not** leave the hand vacuum plugged in when unattended. Unplug the electrical cord when not in use and before servicing.
- **Do not** allow to be used as a toy. Close attention is necessary when used by or near children, pets or plants.
- Use only as described in this manual. Use only manufacturer's recommended accessories.
- **Do not** pull cord, use cord as a handle, close a door on cord, or pull cord around sharp edges or corners. Keep cord away from heated surfaces.
- Use **only** extension cords UL-rated or cUL at 15 amperes. extension cords rated for less amperage may overheat. Care should be taken to arrange the cord so that the cord cannot be pulled or tripped over.
- Turn off all controls as applicable before unplugging from electrical outlet.
- **Do not** unplug by pulling on cord. To unplug, grasp the plug, not the cord.
- **Do not** handle plug or hand vacuum with wet hands or operate without shoes.
- **Do not** put any objects into openings. Do not use with any opening blocked. Keep free of dust, lint, hair and anything else that may reduce air flow.
- Store your appliance indoors in a cool, dry area.
- Keep your work area well lit.
- **Do not** immerse the hand vacuum into water or other liquids.
- Keep end of hose and other openings away from your face and body.
- Use only on dry surfaces.
- Using improper voltage may result in damage to the motor and possible injury to the user. Correct voltage is listed on rating label.

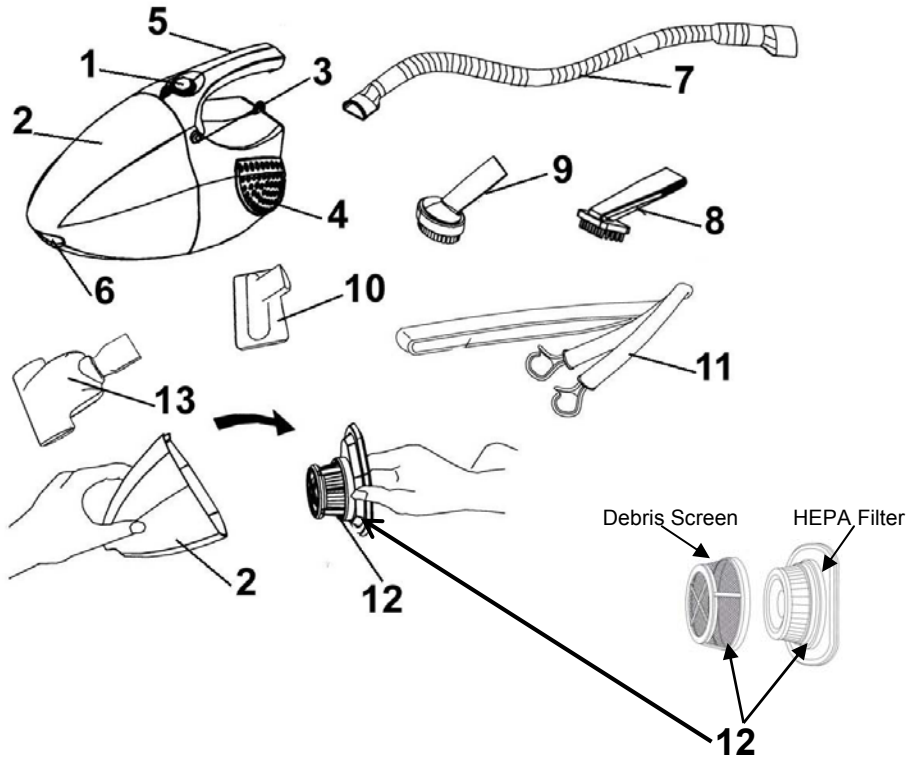
SAVE THESE INSTRUCTIONS

For Household Use Only



WARNING: To reduce the risk of electric shock, this appliance has a polarized plug (one blade is wider than the other). This plug will fit in a polarized outlet only one way. If the plug does not fit fully in the outlet, reverse the plug. If it still does not fit, contact a qualified electrician to install the proper outlet. Do not modify the plug in any way.

GETTING TO KNOW YOUR HAND VACUUM



- | | |
|------------------------------|---------------------------------|
| 1. On/Off Switch | 7. Flexible Hose |
| 2. Dust Cup (Container) | 8. Crevice Brush |
| 3. Dust Cup Release Button | 9. Oval Dusting Brush |
| 4. Exhaust Filter Cover (x2) | 10. Pet Hair Removal Attachment |
| 5. Handle | 11. Shoulder Strap |
| 6. Suction Hole | 12. HEPA Filter |
| | 13. Air Driven Turbo Brush |

Technical Specifications

Voltage: 120V., 60Hz.
Power: 6.67 Amps, 800 Watts

Illustrations may differ from actual product.

TROUBLE SHOOTING GUIDE

PROBLEM	POSSIBLE REASON	POSSIBLE SOLUTION
HAND VACUUM WILL NOT OPERATE	<ol style="list-style-type: none"> Power cord not firmly plugged into outlet. No power in wall outlet. Needs servicing. Thermostat has tripped. 	<ol style="list-style-type: none"> Plug unit in firmly. Check fuse or breaker. Replace fuse/reset breaker. Call 1-800-798-7398. Turn the unit off and unplug from outlet. Allow to cool.
HAND VACUUM WILL NOT PICK-UP OR SUCTION POWER IS WEAK	<ol style="list-style-type: none"> Dust cup is full. Unit clogged. HEPA Dust Cup Filter needs cleaning or replacing. 	<ol style="list-style-type: none"> Empty dust cup – (see pages 5/6). Turn unit off and unplug from wall outlet. Remove HEPA Dust Cup Filter and check for object(s) in air duct and remove. Clean or replace HEPA Dust Cup Filter. (see pages 5/6)
TURBO BRUSH DOES NOT ROTATE OR ROTATES SLOWLY	<ol style="list-style-type: none"> Rotating brush or elbow obstructed. Hose obstructed. HEPA dust cup filter clogged. 	<ol style="list-style-type: none"> Clear obstructions. (see page 5.) Clear obstruction. Clean HEPA dust cup filter. (See pages 5/6.)
DUST ESCAPING FROM HAND VACUUM	<ol style="list-style-type: none"> Dust cup is full. HEPA Dust Cup Filter is not installed correctly. There is a puncture or hole in HEPA Dust Cup Filter. 	<ol style="list-style-type: none"> Empty dust cup. Review HEPA Dust Cup Filter instructions. (see pages 5/6) Replace HEPA dust cup filter. (see pages 5/6)
HAND VACUUM HOSE OR BRUSHES WILL NOT PICK-UP	<ol style="list-style-type: none"> Hose clogged. Dust cup is full. 	<ol style="list-style-type: none"> Remove hose and/or bushes. Remove obstruction from hose. Empty and clean dust cup.

ORDERING REPLACEMENT FILTERS

TO ORDER REPLACEMENT HEPA FILTERS

FOR MODEL EP045

Style # XSH045 – HEPA Filter Only

Call: 1-866-98SHARK (1-866-987-4275)

Monday to Friday 8:30 A.M. - 5:00 P.M. Eastern Standard Time
or

visit our website: www.sharkvac.com

FOR TECHNICAL SUPPORT
for Models EP045

Call: 1 (800) 798-7398

Monday to Friday 8:30 A.M. - 5:00 P.M. Eastern Standard Time

Please Note: After each Use - Always remove the Filter Debris Screen from the HEPA Dust Cup Filter, then vigorously "TapClean" HEPA Filter until no more dust can be removed. Filter should be rinsed and completely dried at least once a month or when suction appears reduced.

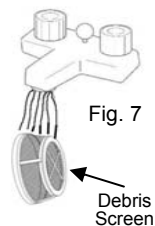
To wash your HEPA Dust Cup Filter, hold filter cartridge by frame flange and rinse under a tap until all observable dirt has been removed. Some discoloration of the HEPA filter material may occur, this is normal and will not affect the filter's performance. When finished, shake off excess water. Do **NOT** wash in dishwasher.

It is important that when you wash the HEPA dust cup filter, you allow it to dry **COMPLETELY** before using again. We recommend 24 hours to air dry. **DO NOT DRY IN DRYER.**

5. Vigorously "TapClean" the HEPA Dust Cup Filter on a hard surface until no more dust is observed falling out from between the pleats of the filter. (Fig. 6)

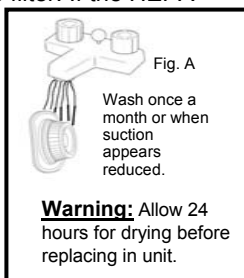


6. "TapClean" the Debris Screen or rinse under a faucet until clean. (Fig. 7) Remember that the Debris Screen must be completely air dried for 24 hours before reinstalling in the vacuum.



7. Replace the Debris Screen on the HEPA Dust Cup Filter and reinstall filter assembly in the vacuum. (not shown)

PLEASE NOTE: The white pleated filter material in the HEPA Dust Cup Filter will discolor over time -This is NORMAL and will NOT affect the performance of the filter. If the HEPA Dust Cup Filter is properly "TapCleaned" after each use and suction does not return to 100%, then we suggest that the HEPA filter be "TapCleaned" vigorously until no more dust can be removed, then rinsed under the faucet and allowed to air dry for 24 hours before refitting into the vacuum. (Fig. A) Wash once a month or when suction appears reduced.

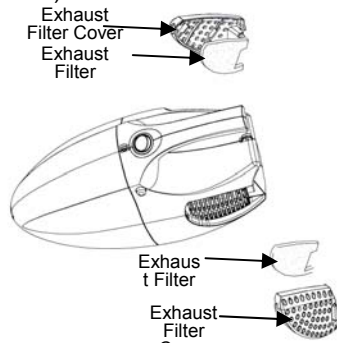


CAUTION: The suction hole must be open, free of any obstructions at all times. Otherwise, the motor will overheat and could become damaged.

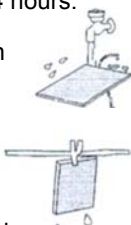
Changing & Cleaning the Exhaust Filters

The exhaust filters are washable filters but should be replaced every three (3) months depending on usage.

- Remove the exhaust filter covers from the sides of the unit. (See illustration below.)



- Rinse the exhaust filters in lukewarm water and air dry the filters completely. Do not use a washing machine to rinse the filters. Do not use a hair dryer to dry them. Air dry only for 24 hours. Never operate the vacuum without the exhaust filters in place.
- When the filters are dry, replace them into the exhaust filter covers and replace the filter covers on the unit.
- A severely soiled or clogged filter should be thoroughly washed with fresh tepid water. A mild detergent can be used if required.



Please Note: The HEPA Dust Cup Filter is washable. It should, however, be replaced every six (6) months to ensure peak performance of your vacuum. The Exhaust filters are washable. They should however be replaced every six (6) months to ensure peak performance of your vacuum.

Important: Make sure that ALL filters are completely dry before re-installing back in the hand vacuum.

Important: All filters should be checked regularly for signs of damage, preferably after each cleaning task. The filters must be replaced immediately if they become damaged. Always disconnect the vacuum from the electrical outlet when checking the filters.

Important: If the suction opening in the unit or the hose becomes blocked, switch off the vacuum cleaner and remove the blocking substance before you start the unit again.

- Do not operate the vacuum cleaner to close too heaters, or radiators.



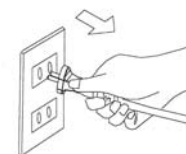
- Before inserting the power plug into the wall outlet, make sure that your hands are dry.



- Do not vacuum any liquids.

- Keep hair, loose clothing, fingers, feet and all parts of body away from openings.

- When pulling out the power plug from the wall outlet, pull the plug not the power cord.



- Do not pick up anything that is burning or smoking such as cigarettes, matches or hot ashes.

- Do not use without HEPA dust cup filter in place.

- Before you start vacuuming, make sure to remove large or sharp objects that might damage the vacuum.



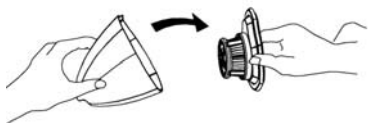
OPERATING INSTRUCTIONS

Warning: Always unplug from electrical outlet before opening the dust cup (container).

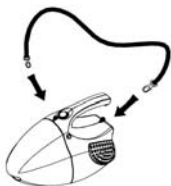
Note: HEPA dust cup filter must be used when operating the hand vacuum.

Using The Unit As A Hand Vacuum

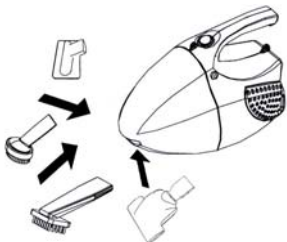
1. To open the dust cup (container), push the dust cup release button and pull out the dust cup. Verify that the HEPA dust cup filter is inside (see illustration below), then re-attach the dust cup (container) to the hand vacuum.



2. To use the Hand Vacuum with the shoulder strap, attach it to the unit as shown below.

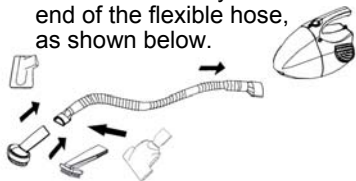


3. To attach the oval dusting brush, crevice brush or the pet hair removal attachment to the Hand Vacuum, push attachment into the suction hole, as shown below.



NOTE: The pet hair removal attachment is for use on upholstery, drapes and other fabric surfaces to remove lint, pet hair, etc. **THE PET HAIR REMOVAL ATTACHMENT IS NOT INTENDED TO BE USED AS A PET GROOMING DEVICE.**

4. To use the flexible hose, push the end of the hose into the suction hole, then attach the desired accessory to the other end of the flexible hose, as shown below.



How To Operate Your Hand Vacuum

1. Hold the hand vacuum firmly in your hand by the Handle.
2. Push the On/Off Power Switch to "On" position.
3. Start vacuuming.

CAUTION: The Hand Vacuum is a very powerful unit. Make sure that you hold it firmly, otherwise it can slip out of your hand and cause injury.

Important: This unit is equipped with a motor protective thermostat. If for some reason the vacuum cleaner should overheat, the thermostat will automatically turn the unit off. Should this occur:

- Push the On/Off button once.
- Disconnect the plug from the power source.
- Check the source of overheating problem. (i.e. clogged hose or filter)
- If clogged hose or filter is found, unclog the hose and replace the filters.
- Wait at least 45 minutes before attempting to reuse the vacuum.
- After unit has cooled down for 45 minutes, plug in the cleaner and push the On/Off button. The vacuum should start again.
- If the vacuum still does not start, contact customer service at 1 (800) 798-7398.

OPERATING INSTRUCTIONS cont.

Using The Unit With Air Driven Turbo Brush

The efficiency of your air driven turbo brush depends on the bristle brush rotating at high speed. Strong air suction is needed to accomplish this. In order to ensure that maximum air suction is maintained, please read the following instructions:

1. Empty the dust cup frequently.
2. Always "TAPCLEAN" the HEPA dust cup filter when emptying the dust cup container.
3. Ensure that the rotating brush is kept free of hair and string which may accumulate and decrease brush performance.
4. Keep Air Driven Turbo Brush turbine free of dirt and foreign matter. (See illustration below for cleaning instructions.)

Cleaning Air Driven Turbo Brush

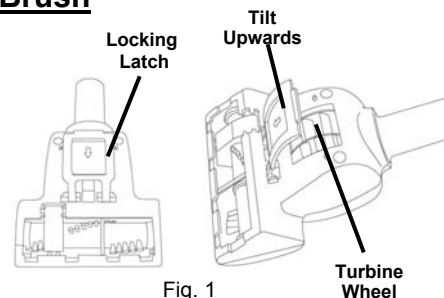


Fig. 1

From time to time, the turbine of your turbo brush will require cleaning. To do this:

1. Remove the turbo brush from the hose or unit.
2. Turn turbo brush over and open the hinged cover to access the turbine wheel. (see Fig. 1)
3. There may be some dust, lint, hair, etc on the turbine wheel. Remove as much of this as possible.
4. You may also use the unit's hose to remove any additional debris from the turbine.

Cleaning & Changing the HEPA Dust Cup Filter

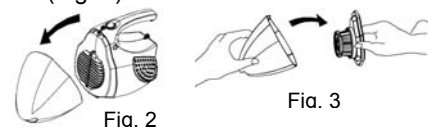
Warning: Always unplug the unit from electrical outlet before opening the Dust Cup (container).

Important: Do **NOT** use the HEPA filter cartridge without the debris screen in place.

Warning: After each Use - Always remove the Filter Debris Screen from the HEPA Dust Cup Filter, then vigorously "TapClean" HEPA Filter until no more dust can be removed.

IMPORTANT, Please Note : The "TapClean" HEPA Dust Cup Filter & Debris Screen will stop most of the tiniest dust particles and airborne allergens from re-entering the air you breathe. In fact it stops 99.97% of all particles as small as 0.3 microns - many times smaller than a human hair!!! Because of this incredible filtration performance, the HEPA Dust Cup Filter will quickly accumulate, inside the white filter folds, many fine dust particles that are difficult to see but which will eventually block or reduce your suction power - if not cleaned properly. Clean the HEPA Filter and Debris Screen after each use as described in this section.

1. To open the Dust Cup (container), push button and detach the Dust Cup (container). (Fig. 2)
2. Pull out the HEPA Dust Cup Filter. (Fig. 3)



3. Empty the dust from the Dust Cup (container). (Fig. 4)
4. Separate the debris screen from the HEPA filter cartridge by grasping the debris screen with one hand and the filter frame with the other and pull apart. (Fig. 5)

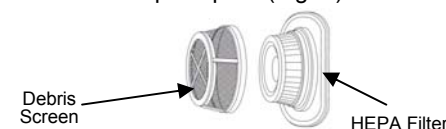


Fig. 5

Free Manuals Download Website

<http://myh66.com>

<http://usermanuals.us>

<http://www.somanuals.com>

<http://www.4manuals.cc>

<http://www.manual-lib.com>

<http://www.404manual.com>

<http://www.luxmanual.com>

<http://aubethermostatmanual.com>

Golf course search by state

<http://golfingnear.com>

Email search by domain

<http://emailbydomain.com>

Auto manuals search

<http://auto.somanuals.com>

TV manuals search

<http://tv.somanuals.com>