

SharkTM

cordless hand vac

15.6 Volts

Model EP750M

USE AND CARE INSTRUCTIONS



For information or assistance call
Tel: 1 866 98SHARK (1 866 987-4275)
EURO-PRO Operating LLC
94 Main Mill Street, Door 16
Plattsburgh, NY 12901
www.sharkvac.com

ONE (1) YEAR LIMITED WARRANTY

EURO-PRO Operating LLC warrants this product to be free from defects in material and workmanship for a period of one (1) year from the date of the original purchase, when utilized for normal household use, subject to the following conditions, exclusions and exceptions.

If your appliance fails to operate properly while in use under normal household conditions within the warranty period, return the complete appliance and accessories, freight prepaid to **EURO-PRO Operating LLC**, 21 Lawrence Paquette Industrial Drive, Champlain, NY 12919. If the appliance is found to be defective in material or workmanship, **EURO-PRO Operating LLC** will repair or replace it free of charge. Proof of purchase date and \$9.95 to cover the cost of return shipping and handling must be included. *

Non-durable parts including, without limitation, dust cups, filters and brushes which normally require replacement are specifically excluded from warranty.

The liability of **EURO-PRO Operating LLC** is limited solely to the cost of the repair or replacement of the unit at our option. This warranty does not cover normal wear of parts and does not apply to any unit that has been tampered with or used for commercial purposes. This limited warranty does not cover damage caused by misuse, abuse, negligent handling or damage due to faulty packaging or mishandling in transit. This warranty does not cover damage or defects caused by or resulting from damages from shipping or repairs, service or alterations to the product or any of its parts, which have been performed by a repair person not authorized by **EURO-PRO Operating LLC**.

This warranty is extended to the original purchaser of the unit and excludes all other legal and/or conventional warranties. The responsibility of **EURO-PRO Operating LLC** if any, is limited to the specific obligations expressly assumed by it under the terms of the limited warranty. **In no event is EURO-PRO Operating LLC** liable for incidental or consequential damages of any nature whatsoever. Some states do not permit the exclusion or limitation of incidental or consequential damages, so the above may not apply to you.

This warranty gives you specific legal rights, and you may also have other rights which vary from state to state.

***Important:** Carefully pack item to avoid damage in shipping. Be sure to include proof of purchase date and to attach tag to item before packing with your name, complete address and phone number with a note giving purchase information, model number and what you believe is the problem with item. We recommend you insure the package (as damage in shipping is not covered by your warranty). Mark the outside of your package "ATTENTION CUSTOMER SERVICE". We are constantly striving to improve our products, therefore the specifications contained herein are subject to change without notice.

REPLACEMENT FILTERS/ BATTERY PACK

Replacement dust cup filter SKU# XSB750
Replacement battery pack SKU# X8901
for Model EP750M

Call:1-866-98SHARK (1-866-987-4275)
Monday to Friday 8:30 A.M. - 5:00 P.M. Eastern Standard Time

or
visit our website: www.sharkvac.com

FOR TECHNICAL SUPPORT

Dial: 1 800 798-7398
Monday to Friday 8:30 A.M. - 5:00 P.M. Eastern Standard Time

Please Note

The Dust Cup Filter is washable. It should, however, be replaced every three (3) months to ensure peak performance of your vacuum.

Important

Make sure that Dust Cup Filter is completely dry before re-installing back in the hand vacuum.

IMPORTANT SAFEGUARDS

When using an electrical appliance, basic safety precautions should always be observed, including the following

READ ALL INSTRUCTIONS BEFORE USING YOUR CORDLESS HAND VACUUM, ALWAYS FOLLOW THESE SAFETY INSTRUCTIONS.

WARNING: To reduce the risk of fire, electrical shock, or injury:

1. Do not charge this unit outdoors.
2. Do not use outdoors or on wet surfaces.
3. Do not allow to be used as a toy. Close attention is necessary when used by or near children.
4. Use only as described in this manual. Use only manufacturer's recommended attachments.
5. Do not use with damaged cord or plug. Do not use cordless hand vacuum if it has been dropped, damaged, left outdoors, or dropped in water. Return it to **EURO-PRO Operating LLC** for examination, repair or adjustment.
6. Do not abuse the charger cord. Never carry the charger or base by the cord or yank to disconnect from an outlet; instead grasp the charger and pull to disconnect.
7. Keep charger cord away from heated surfaces.
8. This product includes rechargeable nickel cadmium batteries. **Do not incinerate batteries or expose to high temperatures**, as they may explode.
9. Do not handle plug or appliance with wet hands.
10. Do not put any object into openings. Do not use with any opening blocked; keep free of dust, lint, hair and anything that may reduce air flow.
11. Keep hair, loose clothing, fingers, and all parts of body away from openings and moving parts.
12. Do not pick up anything that is burning or smoking, such as cigarettes, matches, or hot ashes.
13. Do not attempt to change accessories while unit is running.
14. Use extra care when cleaning on stairs.
15. Do not use to pick up flammable or combustible liquids such as gasoline or use in areas where they may be present.
16. Look on your hand vacuum and follow all label and marking instructions.
17. Do not use charger with an extension cord. Plug charger directly into an electrical outlet. Use charger only in a standard (120V., 60Hz) electrical outlet.
18. Keep end of hose, wands and other openings away from your face and body.
19. **Do not use the hand vacuum cleaner without dust cup filter in place.**
20. Store the cordless vacuum indoors. Put the cordless vacuum away after use to prevent accidents.
21. Leaks from battery cells can occur under extreme conditions. If the liquid, which is 20-35% solution of potassium hydroxide, gets on the skin - wash immediately with soap and water or neutralize with a mild acid such as lemon juice or vinegar. If the liquid gets into the eyes, flush them immediately with clean water for a minimum of 10 minutes and seek medical attention.
22. Use only on dry, indoor surfaces.
23. Do not use for any purpose other than described in this user's guide.
24. Do not attempt to use the charger with any other product nor attempt to charge this product with another charger. **Use only the charger supplied with this appliance.**
25. The appliance must be disconnected from the supply when removing the battery.
26. The battery pack must be removed from the appliance before the unit is disposed of safely.
27. The battery pack must be disposed of properly.

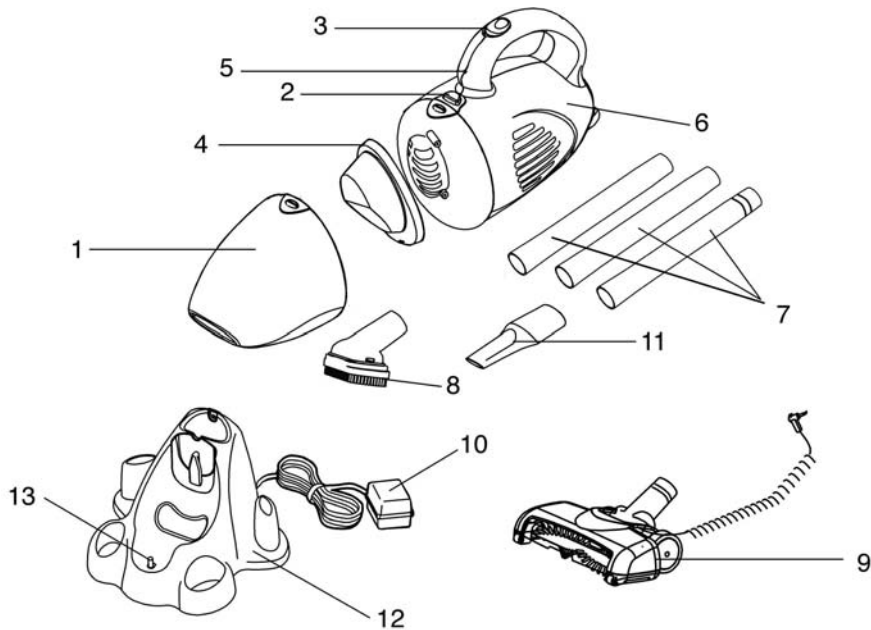
SAVE THESE INSTRUCTIONS
FOR HOUSEHOLD USE ONLY

Shark™

cordless hand vac

15.6 Volts

Model EP750M



- 1. Dust Cup (Container)
- 2. Dust Cup Release Button
- 3. On / Off Switch
- 4. Dust Cup Filter
- 5. Charging Light Indicator
- 6. Main Unit
- 7. Extension Tubes
- 8. Convertible Brush
- 9. Motorized Brush
- 10. Charging Adapter
- 11. Crevice Tool
- 12. Recharging Stand
- 13. Charging Jack

NOTE: Cordless vacuum Model EP750M is shipped with the batteries uncharged. Charging of the unit for 24 hours prior to first use is required.

TROUBLESHOOTING GUIDE

PROBLEM	POSSIBLE REASON	POSSIBLE SOLUTION
HAND VACUUM WILL NOT OPERATE	<ol style="list-style-type: none"> 1. Batteries discharged. 2. No power in electrical outlet supplying transformer. 3. Unit needs servicing. 	<ol style="list-style-type: none"> 1. Charge unit. 2. Check fuse or breaker. Replace fuse/reset breaker. 3. Call 1 800 798-7398
HAND VACUUM WILL NOT PICK-UP OR SUCTION POWER IS WEAK	<ol style="list-style-type: none"> 1. Dust cup container is full. 2. Dust cup filter needs cleaning. 3. Unit needs recharging. 	<ol style="list-style-type: none"> 1. Empty dust cup container – (see page 4). 2. Remove dust cup filter and check for object(s) in air duct and remove. Clean or replace dust cup filter. (see page 4). 3. Charge unit.
DUST ESCAPING FROM HAND VACUUM	<ol style="list-style-type: none"> 1. Dust cup container is full. 2. Dust cup filter is not installed correctly. 3. Puncture/hole in dust cup filter. 	<ol style="list-style-type: none"> 1. Empty dust cup container. 2. Review dust cup filter installation instructions. (see page 4) 3. Replace dust cup filter. (see page 4)
HAND VACUUM BRUSHES WILL NOT PICK-UP	<ol style="list-style-type: none"> 1. Extension tubes clogged. 2. Dust cup container is full. 	<ol style="list-style-type: none"> 1. Remove tube and/or bushes. Remove obstruction from tube or brushes. 2. Empty and clean dust cup container.

Battery Pack Replacement & Disposal

This vacuum cleaner contains a nickel-cadmium (Ni-Cd) batteries. Batteries must be recycled or disposed of properly. Call your nearest recycling center for information on the recycling and disposal of nickel-cadmium (Ni-Cd) batteries. If uncertain as to how to remove the battery pack, we suggest you take your hand vacuum to a reputable small appliance service technician to have this service preformed.

The battery pack of your EP750M is replaceable, however care should be taken when doing so. Follow these steps when replacement is required:

1. Remove unit from charging stand and /or remove the charging adapter jack, before changing batteries. Ensure that the "on / off" switch is in the "off" position.
2. Open the battery pack compartment by removing the single Phillips head screw located in the recess at the rear of the unit. **NEVER** open the battery compartment except to change the battery pack when required.
3. Remove battery compartment cover. Set aside battery compartment cover with the screw.
4. Carefully detach the two (2) electrical connectors from the battery pack by pulling straight out from the battery pack.
5. Lift out the battery pack and set aside.
6. Insert the new battery pack and re-connect the terminals by pushing lead wires onto battery tabs.
7. Tuck the wiring inside the battery compartment so that the wiring does not interfere with the battery compartment cover when it is replaced.
8. Re-install the battery compartment cover by sliding it over the battery towards the front of the unit, making sure that the front snap engages the body of the unit.
9. Replace the battery compartment cover screw.

WARNING: NEVER use ordinary batteries for replacement, as these may leak and damage your vacuum cleaner. Use only battery pack X8901 provided by **EURO-PRO Operating LLC** for replacement.

CAUTION: NEVER use the unit without the battery compartment cover in place.

NOTE: Any other servicing should be performed by an authorized service representative.



**"Ni-Cd" BATTERY MUST
BE RECYCLED OR
DISPOSED OF PROPERLY**

CAUTION

- Use only with the battery pack supplied with the unit.
- Do not attempt to remove the battery pack from the unit to charge it.
- Never attempt to throw the battery pack or unit into a fire or incinerate it.
- Do not attempt to remove or damage the battery casing.
- Battery must be recycled or disposed of properly at the end of it's service life.

ASSEMBLY

Note: Dust cup filter (4) must be used when operating the hand vacuum.

1. To open the dust cup (container) (1), push button (2) and remove the dust cup (1). Verify that the dust cup filter (4) is inside, then re-attach the dust cup (container) (1) to the hand vacuum.



Fig. 1

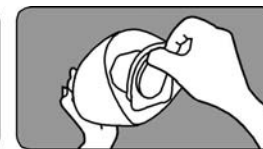


Fig. 2

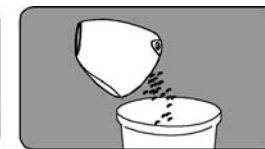


Fig. 3

2. To attach the convertible brush (8), or crevice tool (11) to the Hand Vacuum, push the attachment into the suction hole, as shown in Fig.4.

IMPORTANT: Use only Charging Adaptor No. **AD-2425-UL** supplied with this unit.

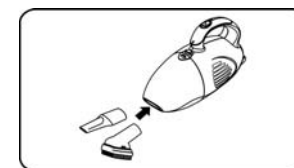


Fig. 4

3. To operate the motorized brush, connect the plug of the spiral cord of the brush to the jack under the bottom of the main unit, then turn on the unit for vacuuming. (Fig5, 6)

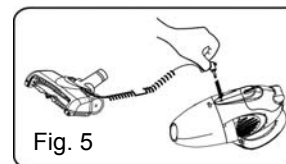


Fig. 5

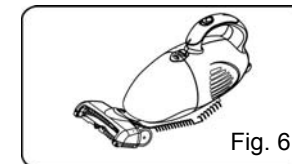
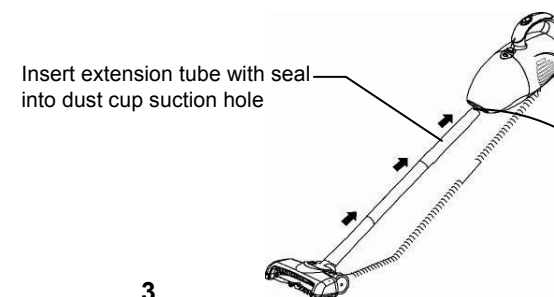


Fig. 6

4. To use the extension tubes (7) with the motorized brush (9), push the extension tube with the rubber seal into the suction hole of the dust cup, then insert the other extension tubes into each other and then insert the motorized brush (9) into the last extension tube. Operate the motorized brush as shown in Point 3 above. The convertible brush (8) and the crevice tool (11) can also be used with the extension tubes (7).



HOW TO OPERATE YOUR CORDLESS VACUUM

Your cordless vacuum operates when the batteries are fully charged. **Before using, please ensure that the cordless vacuum is initially charged for 24 hours.**

IMPORTANT: Use only Charging Adaptor No. **AD-2425-UL** supplied with this unit.

CAUTION: The Cordless Vacuum is a very powerful unit. Make sure that you hold it firmly, otherwise it can slip out of your hand and cause injury.

CHANGING & CLEANING THE DUST CUP FILTER

To achieve the best performance, empty the dust cup (# 1) and clean the dust cup filter (# 4) after each use.

1. To open the Dust Cup container, press down on the release button and pull out the Dust Cup container (fig. 1).
2. Pull out the Dust Cup Filter (fig. 2).
3. Empty the dust from the Dust Cup Filter, (fig. 3).
4. Rinse the Dust Cup Filter in warm water, and then wait until it dries completely before replacing it into the Dust Cup container.
5. Place the Dust Cup Filter carefully into the Dust Cup container.
6. Attach the Dust Cup container to the Cordless Vacuum.



Fig. 1

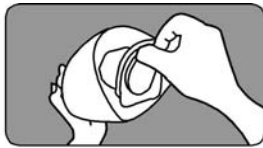


Fig. 2

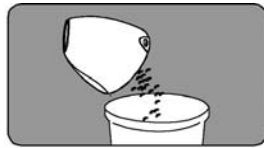


Fig. 3

NOTE: It is recommended that the dust cup filter be changed every three (3) months to ensure peak performance of the unit.

CAUTION: The suction hole must be free of obstructions at all times. Otherwise, the motor will overheat and could become damaged.

CHARGING THE CORDLESS VACUUM

1. Connect the charger jack to the charging hole on the underside of the charging stand. (See fig. 1) Plug the the charging transformer into the wall outlet.
2. This vacuum cleaner is powered by Ni-Cd batteries. Before first use, they must be charged for a minimum of 24 hours.
3. Once the batteries are fully charged, the vacuum cleaner will run for **up to 20 minutes** before recharging is required.
4. To recharge, simply dock the vacuum cleaner in the charging stand, with the switch in the "off" position. Make sure that the unit is well seated and that the charging light is illuminated. Charging times will vary depending upon the amount of usage between charging cycles.
5. The charging light indicator (5) on the vacuum cleaner will illuminate to indicate that the vacuum is properly charging.

NOTE: Peak performance may only be realized after the unit has been charged and discharged two (2) or three (3) times.

IMPORTANT: To maintain peak performance of your cordless hand vacuum, it is recommended that the unit be fully discharged, then completely re-charged at least once a month.

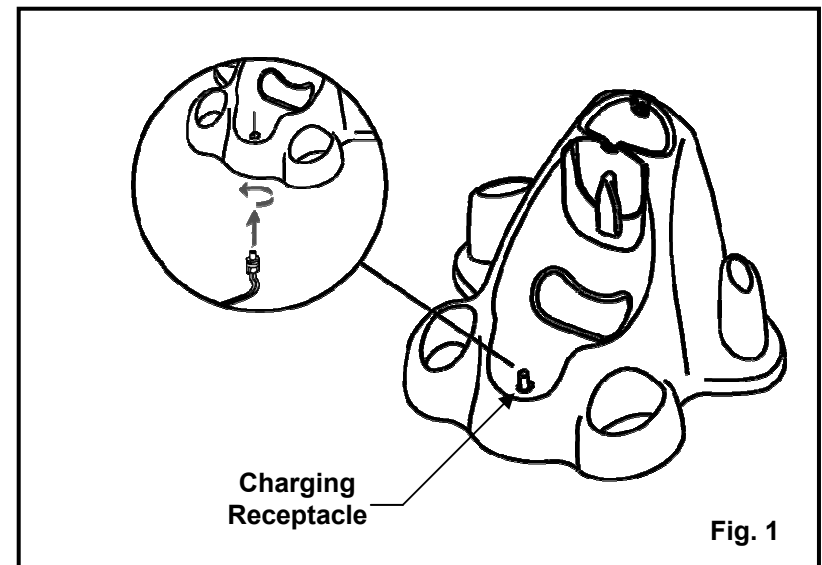


Fig. 1

Free Manuals Download Website

<http://myh66.com>

<http://usermanuals.us>

<http://www.somanuals.com>

<http://www.4manuals.cc>

<http://www.manual-lib.com>

<http://www.404manual.com>

<http://www.luxmanual.com>

<http://aubethermostatmanual.com>

Golf course search by state

<http://golfingnear.com>

Email search by domain

<http://emailbydomain.com>

Auto manuals search

<http://auto.somanuals.com>

TV manuals search

<http://tv.somanuals.com>