



Adaptive Server[®] Anywhere SNMP Extension Agent User's Guide

Part number: DC00192-01-0902-01
Last modified: December 2004

Copyright © 1989–2004 Sybase, Inc. Portions copyright © 2001–2004 iAnywhere Solutions, Inc. All rights reserved.

No part of this publication may be reproduced, transmitted, or translated in any form or by any means, electronic, mechanical, manual, optical, or otherwise, without the prior written permission of iAnywhere Solutions, Inc. iAnywhere Solutions, Inc. is a subsidiary of Sybase, Inc.

Sybase, SYBASE (logo), AccelaTrade, ADA Workbench, Adaptable Windowing Environment, Adaptive Component Architecture, Adaptive Server, Adaptive Server Anywhere, Adaptive Server Enterprise, Adaptive Server Enterprise Monitor, Adaptive Server Enterprise Replication, Adaptive Server Everywhere, Adaptive Server IQ, Adaptive Warehouse, AnswerBase, Anywhere Studio, Application Manager, AppModeler, APT Workbench, APT-Build, APT-Edit, APT-Execute, APT-Library, APT-Translator, ASEP, AvantGo, AvantGo Application Alerts, AvantGo Mobile Delivery, AvantGo Mobile Document Viewer, AvantGo Mobile Inspection, AvantGo Mobile Marketing Channel, AvantGo Mobile Pharma, AvantGo Mobile Sales, AvantGo Pylon, AvantGo Pylon Application Server, AvantGo Pylon Conduit, AvantGo Pylon PIM Server, AvantGo Pylon Pro, Backup Server, BayCam, Bit-Wise, BizTracker, Certified PowerBuilder Developer, Certified SYBASE Professional, Certified SYBASE Professional Logo, ClearConnect, Client Services, Client-Library, CodeBank, Column Design, ComponentPack, Connection Manager, Convoy/DM, Copernicus, CSP, Data Pipeline, Data Workbench, DataArchitect, Database Analyzer, DataExpress, DataServer, DataWindow, DB-Library, dbQueue, Developers Workbench, Direct Connect Anywhere, DirectConnect, Distribution Director, Dynamic Mobility Model, Dynamo, e-ADK, E-Anywhere, e-Biz Integrator, EC Gateway, ECMAP, ECRTP, eFulfillment Accelerator, Electronic Case Management, Embedded SQL, EMS, Enterprise Application Studio, Enterprise Client/Server, Enterprise Connect, Enterprise Data Studio, Enterprise Manager, Enterprise Portal (logo), Enterprise SQL Server Manager, Enterprise Work Architecture, Enterprise Work Designer, Enterprise Work Modeler, eProcurement Accelerator, eremote, Everything Works Better When Everything Works Together, EWA, E-Whatever, Financial Fusion, Financial Fusion (and design), Financial Fusion Server, Formula One, Fusion Powered e-Finance, Fusion Powered Financial Destinations, Fusion Powered STP, Gateway Manager, GeoPoint, GlobalFIX, iAnywhere, iAnywhere Solutions, ImpactNow, Industry Warehouse Studio, InfoMaker, Information Anywhere, Information Everywhere, InformationConnect, InstaHelp, Intelligent Self-Care, InternetBuilder, iremote, iScript, Jaguar CTS, jConnect for JDBC, KnowledgeBase, Logical Memory Manager, Mail Anywhere Studio, MainframeConnect, Maintenance Express, Manage Anywhere Studio, MAP, M-Business Channel, M-Business Network, M-Business Server, MDI Access Server, MDI Database Gateway, media.splash, Message Anywhere Server, MetaWorks, MethodSet, ML Query, MobicATS, My AvantGo, My AvantGo Media Channel, My AvantGo Mobile Marketing, MySupport, Net-Gateway, Net-Library, New Era of Networks, Next Generation Learning, Next Generation Learning Studio, O DEVICE, OASiS, OASiS logo, ObjectConnect, ObjectCycle, OmniConnect, OmniSQL Access Module, OmniSQL Toolkit, Open Biz, Open Business Interchange, Open Client, Open Client/Server, Open Client/Server Interfaces, Open ClientConnect, Open Gateway, Open Server, Open ServerConnect, Open Solutions, Optima++, Orchestration Studio, Partnerships that Work, PB-Gen, PC APT Execute, PC DB-Net, PC Net Library, PhysicalArchitect, Pocket PowerBuilder, PocketBuilder, Power Through Knowledge, power.stop, Power++, PowerAMC, PowerBuilder, PowerBuilder Foundation Class Library, PowerDesigner, PowerDimensions, PowerDynamo, Powering the New Economy, PowerJ, PowerScript, PowerSite, PowerSocket, Powersoft, Powersoft Portfolio, Powersoft Professional, PowerStage, PowerStudio, PowerTips, PowerWare Desktop, PowerWare Enterprise, ProcessAnalyst, QAnywhere, Rapport, Relational Beans, RepConnector, Replication Agent, Replication Driver, Replication Server, Replication Server Manager, Replication Toolkit, Report Workbench, Report-Execute, Resource Manager, RW-DisplayLib, RW-Library, S.W.I.F.T. Message Format Libraries, SAFE, SAFE/PRO, SDF, Secure SQL Server, Secure SQL Toolset, Security Guardian, SKILLS, smart.partners, smart.parts, smart.script, SQL Advantage, SQL Anywhere, SQL Anywhere Studio, SQL Code Checker, SQL Debug, SQL Edit, SQL Edit/TPU, SQL Everywhere, SQL Modeler, SQL Remote, SQL Server, SQL Server Manager, SQL Server SNMP SubAgent, SQL Server/CFT, SQL Server/DBM, SQL SMART, SQL Station, SQL Toolset, SQLJ, Stage III Engineering, Startup.Com, STEP, SupportNow, Sybase Central, Sybase Client/Server Interfaces, Sybase Development Framework, Sybase Financial Server, Sybase Gateways, Sybase Learning Connection, Sybase MPP, Sybase SQL Desktop, Sybase SQL Lifecycle, Sybase SQL Workgroup, Sybase Synergy Program, Sybase User Workbench, Sybase Virtual Server Architecture, SybaseWare, Syber Financial, SyberAssist, SybMD, SyBooks, System 10, System 11, System XI (logo), SystemTools, Tabular Data Stream, The Enterprise Client/Server Company, The Extensible Software Platform, The Future Is Wide Open, The Learning Connection, The Model For Client/Server Solutions, The Online Information Center, The Power of One, TotalFix, TradeForce, Transact-SQL, Translation Toolkit, Turning Imagination Into Reality, UltraLite, UltraLite.NET, UNIBOM, Unilib, Uninull, Unisep, Unistring, URK Runtime Kit for UniCode, Versacore, Viewer, VisualWriter, VQL, Warehouse Control Center, Warehouse Studio, Warehouse WORKS, WarehouseArchitect, Watcom, Watcom SQL, Watcom SQL Server, Web Deployment Kit, Web.PB, Web.SQL, WebSights, WebViewer, WorkGroup SQL Server, XA-Library, XA-Server, and XP Server are trademarks of Sybase, Inc. or its subsidiaries.

All other trademarks are property of their respective owners.

Contents

About This Manual	v
SQL Anywhere Studio documentation	vi
Documentation conventions	ix
The Adaptive Server Anywhere sample database	xi
Finding out more and providing feedback	xii
I Using the Adaptive Server Anywhere SNMP Extension Agent	1
1 The Adaptive Server Anywhere SNMP Extension Agent	3
Introduction to the Adaptive Server Anywhere SNMP Extension Agent	4
Understanding SNMP	6
Using the Adaptive Server Anywhere SNMP Extension Agent	10
II Adaptive Server Anywhere SNMP Extension Agent Reference	21
2 Adaptive Server Anywhere MIB Reference	23
The Adaptive Server Anywhere MIB	24
3 RDBMS MIB Reference	41
The RDBMS MIB	42
Index	49



About This Manual

Subject	This book covers material related to running and configuring the Adaptive Server Anywhere SNMP Extension Agent.
Audience	This manual is for Adaptive Server Anywhere users who wish to use the Adaptive Server Anywhere SNMP Extension Agent on Windows 2000, Windows XP, or Windows Server 2003 (32-bit versions). It is to be used in conjunction with other manuals in the documentation set.

SQL Anywhere Studio documentation

The SQL Anywhere Studio documentation

This book is part of the SQL Anywhere documentation set. This section describes the books in the documentation set and how you can use them.

The SQL Anywhere Studio documentation is available in a variety of forms: in an online form that combines all books in one large help file; as separate PDF files for each book; and as printed books that you can purchase. The documentation consists of the following books:

- ◆ **Introducing SQL Anywhere Studio** This book provides an overview of the SQL Anywhere Studio database management and synchronization technologies. It includes tutorials to introduce you to each of the pieces that make up SQL Anywhere Studio.
- ◆ **What's New in SQL Anywhere Studio** This book is for users of previous versions of the software. It lists new features in this and previous releases of the product and describes upgrade procedures.
- ◆ **Adaptive Server Anywhere Database Administration Guide** This book covers material related to running, managing, and configuring databases and database servers.
- ◆ **Adaptive Server Anywhere SQL User's Guide** This book describes how to design and create databases; how to import, export, and modify data; how to retrieve data; and how to build stored procedures and triggers.
- ◆ **Adaptive Server Anywhere SQL Reference Manual** This book provides a complete reference for the SQL language used by Adaptive Server Anywhere. It also describes the Adaptive Server Anywhere system tables and procedures.
- ◆ **Adaptive Server Anywhere Programming Guide** This book describes how to build and deploy database applications using the C, C++, and Java programming languages. Users of tools such as Visual Basic and PowerBuilder can use the programming interfaces provided by those tools. It also describes the Adaptive Server Anywhere ADO.NET data provider.
- ◆ **Adaptive Server Anywhere SNMP Extension Agent User's Guide** This book describes how to configure the Adaptive Server Anywhere SNMP Extension Agent for use with SNMP management applications to manage Adaptive Server Anywhere databases.
- ◆ **Adaptive Server Anywhere Error Messages** This book provides a complete listing of Adaptive Server Anywhere error messages together with diagnostic information.

-
- ◆ **SQL Anywhere Studio Security Guide** This book provides information about security features in Adaptive Server Anywhere databases. Adaptive Server Anywhere 7.0 was awarded a TCSEC (Trusted Computer System Evaluation Criteria) C2 security rating from the U.S. Government. This book may be of interest to those who wish to run the current version of Adaptive Server Anywhere in a manner equivalent to the C2-certified environment.
 - ◆ **MobiLink Administration Guide** This book describes how to use the MobiLink data synchronization system for mobile computing, which enables sharing of data between a single Oracle, Sybase, Microsoft or IBM database and many Adaptive Server Anywhere or UltraLite databases.
 - ◆ **MobiLink Clients** This book describes how to set up and synchronize Adaptive Server Anywhere and UltraLite remote databases.
 - ◆ **MobiLink Server-Initiated Synchronization User's Guide** This book describes MobiLink server-initiated synchronization, a feature of MobiLink that allows you to initiate synchronization from the consolidated database.
 - ◆ **MobiLink Tutorials** This book provides several tutorials that walk you through how to set up and run MobiLink applications.
 - ◆ **QAnywhere User's Guide** This manual describes MobiLink QAnywhere, a messaging platform that enables the development and deployment of messaging applications for mobile and wireless clients, as well as traditional desktop and laptop clients.
 - ◆ **iAnywhere Solutions ODBC Drivers** This book describes how to set up ODBC drivers to access consolidated databases other than Adaptive Server Anywhere from the MobiLink synchronization server and from Adaptive Server Anywhere remote data access.
 - ◆ **SQL Remote User's Guide** This book describes all aspects of the SQL Remote data replication system for mobile computing, which enables sharing of data between a single Adaptive Server Anywhere or Adaptive Server Enterprise database and many Adaptive Server Anywhere databases using an indirect link such as e-mail or file transfer.
 - ◆ **SQL Anywhere Studio Help** This book includes the context-sensitive help for Sybase Central, Interactive SQL, and other graphical tools. It is not included in the printed documentation set.
 - ◆ **UltraLite Database User's Guide** This book is intended for all UltraLite developers. It introduces the UltraLite database system and provides information common to all UltraLite programming interfaces.

-
- ◆ **UltraLite Interface Guides** A separate book is provided for each UltraLite programming interface. Some of these interfaces are provided as UltraLite components for rapid application development, and others are provided as static interfaces for C, C++, and Java development.

In addition to this documentation set, PowerDesigner and InfoMaker include their own online documentation.

Documentation formats SQL Anywhere Studio provides documentation in the following formats:

- ◆ **Online documentation** The online documentation contains the complete SQL Anywhere Studio documentation, including both the books and the context-sensitive help for SQL Anywhere tools. The online documentation is updated with each maintenance release of the product, and is the most complete and up-to-date source of documentation.

To access the online documentation on Windows operating systems, choose Start ► Programs ► SQL Anywhere 9 ► Online Books. You can navigate the online documentation using the HTML Help table of contents, index, and search facility in the left pane, as well as using the links and menus in the right pane.

To access the online documentation on UNIX operating systems, see the HTML documentation under your SQL Anywhere installation.

- ◆ **PDF books** The SQL Anywhere books are provided as a set of PDF files, viewable with Adobe Acrobat Reader.

The PDF books are accessible from the online books, or from the Windows Start menu.

- ◆ **Printed books** The complete set of books is available from Sybase sales or from eShop, the Sybase online store at <http://eshop.sybase.com/eshop/documentation>.

Documentation conventions

This section lists the typographic and graphical conventions used in this documentation.

Syntax conventions

The following conventions are used in the SQL syntax descriptions:

- ◆ **Keywords** All SQL keywords appear in upper case, like the words ALTER TABLE in the following example:

ALTER TABLE [*owner*.]*table-name*

- ◆ **Placeholders** Items that must be replaced with appropriate identifiers or expressions are shown like the words *owner* and *table-name* in the following example:

ALTER TABLE [*owner*.]*table-name*

- ◆ **Repeating items** Lists of repeating items are shown with an element of the list followed by an ellipsis (three dots), like *column-constraint* in the following example:

ADD *column-definition* [*column-constraint*, . . .]

One or more list elements are allowed. In this example, if more than one is specified, they must be separated by commas.

- ◆ **Optional portions** Optional portions of a statement are enclosed by square brackets.

RELEASE SAVEPOINT [*savepoint-name*]

These square brackets indicate that the *savepoint-name* is optional. The square brackets should not be typed.

- ◆ **Options** When none or only one of a list of items can be chosen, vertical bars separate the items and the list is enclosed in square brackets.

[**ASC** | **DESC**]

For example, you can choose one of ASC, DESC, or neither. The square brackets should not be typed.

- ◆ **Alternatives** When precisely one of the options must be chosen, the alternatives are enclosed in curly braces and a bar is used to separate the options.

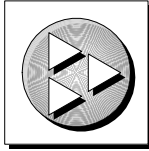
[**QUOTES** { **ON** | **OFF** }]

If the QUOTES option is used, one of ON or OFF must be provided. The brackets and braces should not be typed.

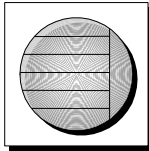
Graphic icons

The following icons are used in this documentation.

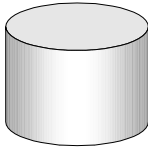
- ◆ A client application.



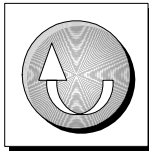
- ◆ A database server, such as Sybase Adaptive Server Anywhere.



- ◆ A database. In some high-level diagrams, the icon may be used to represent both the database and the database server that manages it.



- ◆ Replication or synchronization middleware. These assist in sharing data among databases. Examples are the MobiLink Synchronization Server and the SQL Remote Message Agent.



- ◆ A programming interface.



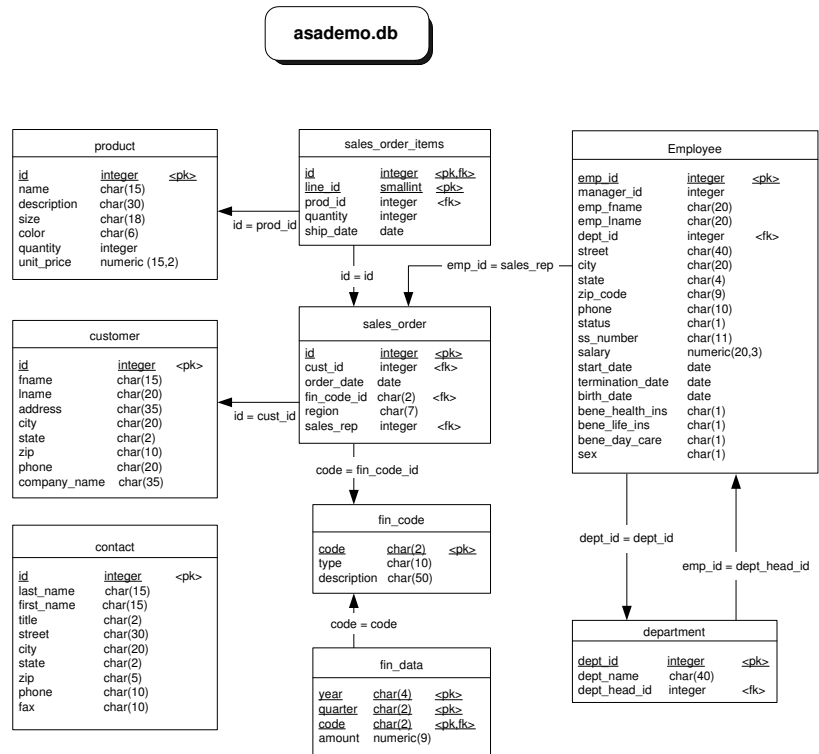
The Adaptive Server Anywhere sample database

Many of the examples throughout the documentation use the Adaptive Server Anywhere sample database.

The sample database is held in a file named *asademo.db*, and is located in your SQL Anywhere directory.

The sample database represents a small company. It contains internal information about the company (employees, departments, and finances) as well as product information and sales information (sales orders, customers, and contacts). All information in the database is fictional.

The following figure shows the tables in the sample database and how they relate to each other.



Finding out more and providing feedback

We would like to receive your opinions, suggestions, and feedback on this documentation.

You can provide feedback on this documentation and on the software through newsgroups set up to discuss SQL Anywhere technologies. These newsgroups can be found on the *forums.sybase.com* news server.

The newsgroups include the following:

- ◆ [sybase.public.sqlanywhere.general](#)
- ◆ [sybase.public.sqlanywhere.linux](#)
- ◆ [sybase.public.sqlanywhere.mobilink](#)
- ◆ [sybase.public.sqlanywhere.product_futures_discussion](#)
- ◆ [sybase.public.sqlanywhere.replication](#)
- ◆ [sybase.public.sqlanywhere.ultralite](#)
- ◆ [sybase.public.sqlanywhere.qanywhere](#)

Newsgroup disclaimer

iAnywhere Solutions has no obligation to provide solutions, information or ideas on its newsgroups, nor is iAnywhere Solutions obliged to provide anything other than a systems operator to monitor the service and insure its operation and availability.

iAnywhere Solutions Technical Advisors as well as other staff assist on the newsgroup service when they have time available. They offer their help on a volunteer basis and may not be available on a regular basis to provide solutions and information. Their ability to help is based on their workload.

You can e-mail comments and suggestions to the SQL Anywhere documentation team at iasdoc@iAnywhere.com. Although we do not undertake to reply to e-mails at that address, you can be sure we will read your suggestions with interest.

PART I

USING THE ADAPTIVE SERVER ANYWHERE SNMP EXTENSION AGENT

This part describes how to set up and configure the Adaptive Server
Anywhere SNMP Extension Agent.

CHAPTER 1

The Adaptive Server Anywhere SNMP Extension Agent

About this chapter This chapter introduces you to the Adaptive Server Anywhere SNMP Extension Agent.

Contents	Topic:	page
	Introduction to the Adaptive Server Anywhere SNMP Extension Agent	4
	Understanding SNMP	6
	Using the Adaptive Server Anywhere SNMP Extension Agent	10

Introduction to the Adaptive Server Anywhere SNMP Extension Agent

If you are running Adaptive Server Anywhere on Windows 2000, Windows XP, or Windows Server 2003 (32-bit versions), you can use the Adaptive Server Anywhere SNMP Extension Agent in conjunction with SNMP management applications to manage your Adaptive Server Anywhere databases. One agent can be used to monitor several different databases running on different database servers running on different machines.

Using the Adaptive Server Anywhere SNMP Extension Agent, you can do the following:

- ◆ retrieve the value of all server and database statistics
- ◆ retrieve the value of all server and database properties
- ◆ retrieve the value of all PUBLIC database options
- ◆ set the value for any PUBLIC database option
- ◆ execute stored procedures
- ◆ generate traps based on property or statistic values

Supplied files

The following files for the Adaptive Server Anywhere SNMP Extension Agent are included in your SQL Anywhere Studio installation:

- ◆ **dbsnmp9.dll** The Adaptive Server Anywhere SNMP Extension Agent. This file is located in *C:\Program Files\Sybase\SQL Anywhere 9\win32*.
- ◆ **iAnywhere.mib** The Adaptive Server Anywhere MIB contains all the OIDs for database server and database properties, statistics, and options that can be accessed using the Adaptive Server Anywhere SNMP Extension Agent.
- ◆ **RDBMS-MIB.mib** This is a generic MIB for relational database management systems and contains OIDs that can be accessed using the Adaptive Server Anywhere SNMP Extension Agent.
- ◆ **SNMPv2-SMI.mib** This MIB is referenced by the Adaptive Server Anywhere and RDBMS MIBs.
- ◆ **SNMPv2-TC.mib** This MIB is referenced by the Adaptive Server Anywhere and RDBMS MIBs.
- ◆ **SYBASE-MIB.mib** The Sybase MIB. This MIB is referenced by the Adaptive Server Anywhere MIB.

- ◆ **asasnmp.ini** This file lists the databases that the Adaptive Server Anywhere SNMP Extension Agent monitors. By default, this file is located in *C:\Program Files\Sybase\SQL Anywhere 9\win32*.

Understanding SNMP

Simple Network Management Protocol (**SNMP**) is a standard protocol used for network management. SNMP allows **managers** and **agents** to communicate: managers send requests to agents, and agents respond to queries from managers. Additionally, agents can notify managers when specific events occur using notifications called **traps**.

SNMP agents handle requests to get and set the values of variables for managed objects. Each variable has a single value, and values are generally strings or integers, although they may also be other types.

Variables are kept in a global hierarchy, and each variable has a unique number under its parent. The full name of a variable (including all its parents) is called the **Object Identifier** (OID). All OIDs that are owned by Sybase begin with 1.3.6.1.4.1.897.

The list of OIDs that an agent supports, including their names, types, and other information are stored in a file called a **Management Information Base** (MIB).

A MIB is a database that stores network management information about managed objects. The MIB is separate from the Adaptive Server Anywhere database you are monitoring using the Adaptive Server Anywhere SNMP Extension Agent. The values of MIB objects can be changed or retrieved using SNMP. MIB objects are organized in a hierarchy with the most general information about the network located at the top level of the hierarchy. The Adaptive Server Anywhere SNMP Extension Agent supports the following MIBs:

- ◆ **Adaptive Server Anywhere MIB** a MIB created specifically for the Adaptive Server Anywhere SNMP Extension Agent. All the OIDs in the Adaptive Server Anywhere MIB begin with 1.3.6.1.4.1.897.2. The Adaptive Server Anywhere MIB lists the OIDs for the statistics, properties, and option values that can be retrieved, and in some cases set, using the Adaptive Server Anywhere SNMP Extension Agent.

☞ For more information about the Adaptive Server Anywhere MIB, see [“The Adaptive Server Anywhere MIB” on page 7](#).

- ◆ **RDBMS MIB** a generic, vendor-independent MIB for relational databases. This MIB contains information about the database servers and databases in your system.

☞ For more information about the RDBMS MIB, see [“The RDBMS MIB” on page 9](#).

The Adaptive Server Anywhere MIB

The Adaptive Server Anywhere MIB was created for the Adaptive Server Anywhere SNMP Extension Agent. It includes all database server statistics and properties, as well as all database statistics, properties, and options. The statistics and properties are all read-only (with a few exceptions), and the database options are all read-write.

By default, the Adaptive Server Anywhere MIB is located in *C:\Program Files\Sybase\SQL Anywhere 9\snmp\iAnywhere.mib*.

☞ For information about the tables in the Adaptive Server Anywhere MIB, see [“Adaptive Server Anywhere MIB Reference” on page 23](#).

☞ For information about setting values in the Adaptive Server Anywhere MIB, see [“Setting values using the Adaptive Server Anywhere SNMP Extension Agent” on page 17](#).

The following hierarchy describes the Adaptive Server Anywhere MIB:

OID	Name	Description
1.3.6.1.4.897.2.1.1. <i>n.db</i>	asaServer.asaSrvStat	Returns the value of server statistic <i>n</i> on database <i>db</i> .
1.3.6.1.4.897.2.1.2. <i>n.db</i>	asaServer.asaSrvProp	Returns the value of server property <i>n</i> on database <i>db</i> .
1.3.6.1.4.897.2.2.1. <i>n.db</i>	asaDb.asaDbStat	Returns the value of database statistic <i>n</i> on database <i>db</i> .
1.3.6.1.4.897.2.2.2. <i>n.db</i>	asaDb.asaDbProp	Returns the value of database property <i>n</i> on database <i>db</i> .
1.3.6.1.4.897.2.2.3. <i>n.db</i>	asaDb.asaDbOpt	Returns the value of database option <i>n</i> on database <i>db</i> .
1.3.6.1.4.897.2.3.1	asaAgent.asaVersion	Returns the version of the Adaptive Server Anywhere Extension Agent.
1.3.6.1.4.897.2.3.2. <i>db</i>	asaAgent.asaDbConnStr	Returns the connection string for database <i>db</i> .

OID	Name	Description
1.3.6.1.4.897.2.3.3.db	asaAgent.asaConnected	Returns whether the Adaptive Server Anywhere Extension Agent is connected to database <i>db</i> . Setting this value to 0 causes the Adaptive Server Anywhere Extension Agent to shut down the database ¹ , while setting this value to 1 causes the Adaptive Server Anywhere Extension Agent to attempt to start the database ² .
1.3.6.1.4.897.2.3.4.db	asaAgent.asaStarted	Returns whether database <i>db</i> is running. Setting this value to 0 causes the Adaptive Server Anywhere Extension Agent to shut down the database, while setting this value to 1 attempts to start the database.
1.3.6.1.4.897.2.3.5.db	asaAgent.asaProc	Setting this value to a string <i>proc_name</i> causes the Adaptive Server Anywhere Extension Agent to execute the procedure <i>proc_name</i> in the database. Arguments can be supplied (for example, <i>proc_name</i> ('string', 4)); if no arguments are supplied, parentheses () are appended to the name. Getting the value returns "".
1.3.6.1.4.897.2.4	asaMetaData	Several virtual tables; each row represents a variable supported by the Adaptive Server Anywhere MIB.

¹ Note that when stopping a database by setting this variable, the stop is unconditional, meaning that the database will be stopped even if it has active connections.

² In order to be able to start a database by setting this variable, the DBF parameter must be specified in the connection string (along with DBN if desired and DBKEY if required), and either (a) the UtilDbPwd field must be set in the *asasnmpp.ini* file, or (b) the start database permission on the server (specified with the -gd server option) must be set to **all**.

asaMetaData tables

The Adaptive Server Anywhere MIB includes metadata tables that provide a way to query the Adaptive Server Anywhere Extension Agent to find out which variables are supported.

- ◆ **asaSrvMetaData.asaSrvStatMetaDataTable** lists the database server statistics (variables under `asa.asaServer.asaSrvStat.`)
- ◆ **asaSrvMetaData.asaSrvpropMetaDataTable** lists the database server properties (variables under `asa.asaServer.asaSrv.Prop.`)
- ◆ **asaDbMetaData.asaDbStatMetaDataTable** lists the database statistics (variables under `asa.asaDb.asaDbStat.`)
- ◆ **asaDbMetaData.asaDbpropMetaDataTable** lists the database properties (variables under `asa.asaDb.asaDbProp.`)
- ◆ **asaDbMetaData.asaDbOptMetaDataTable** lists the database options (variables under `asa.asaDb.asaDbOpt.`)

☞ For more information about the information stored in the Adaptive Server Anywhere MIB metadata tables, see [“asaMetaData tables” on page 24.](#)

The RDBMS MIB

The RDBMS MIB is a generic and vendor-independent MIB (RFC 1697) for relational database-management system products. The RDBMS MIB uses **virtual tables** to return information on the servers and databases. The base OID is `1.3.6.1.2.1.39`, and there are 9 virtual tables in this MIB. The Adaptive Server Anywhere SNMP Extension Agent supports 8 of these virtual tables.

☞ For descriptions of the supported tables contained in the RDBMS MIB, see [“RDBMS MIB Reference” on page 41.](#)

The Adaptive Server Anywhere Extension Agent provides *read-only* access to all of the supported variables in the RDBMS MIB. None of the variables in the RDBMS MIB are writable through the Adaptive Server Anywhere Extension Agent.

A virtual table contains a fixed number of attributes and any number for rows. Elements in the table are retrieved using GET requests by appending the column number and row number to the OID of the table. A **1** must be appended to the table OID, so the OID looks as follows:

table.1.column.rownum

By default, the RDBMS MIB is located in `C:\Program Files\Sybase\SQL Anywhere 9\snmp\RDBMS-MIB.mib`.

Using the Adaptive Server Anywhere SNMP Extension Agent

In order to use the Adaptive Server Anywhere SNMP Extension Agent, you must have SNMP installed on your machine and you must create an *asasnmp.ini* file that contains information about the databases that are monitored by the Adaptive Server Anywhere SNMP Extension Agent.

Installing SNMP

Before you can use the Adaptive Server Anywhere Extension Agent, you must install SNMP on your machine. By default, SNMP is not installed on Windows 2000 or Windows XP.

❖ To install SNMP

1. Open the Control Panel.
 - ◆ On Windows 2000, from the Start menu choose Settings ► Control Panel.
 - ◆ On Windows XP, from the Start menu choose Control Panel.
2. Double-click Add/Remove Programs.

The Add/Remove Programs dialog appears.
3. In the left pane of the Add/Remove Programs dialog, click Add/Remove Windows Components.

The Windows Components wizard appears.
4. On the first page of the Windows Components wizard, double-click Management and Monitoring Tools.

The Management and Monitoring Tools dialog appears.
5. Select the Simple Network Management Protocol option and then click OK.
6. Click Next.
7. Click Finished when the installation completes.
8. If you are prompted, reboot your computer.

Once you have installed SNMP on your machine, two services should be running on your machine: **SNMP Service** and **SNMP Trap Service**.

❖ **To check that the SNMP services are installed on your computer**

1. Open the Control Panel.
 - ◆ On Windows 2000, from the Start menu choose Settings ► Control Panel.
 - ◆ On Windows XP, from the Start menu choose Control Panel.
2. In the Control Panel, double-click Administrative Tools.
3. Double-click Services.

The services SNMP Service and SNMP Trap Service appear in the list of local services.

If you installed SNMP before you installed SQL Anywhere Studio, you need to stop and restart the SNMP service so it will detect the Adaptive Server Anywhere SNMP Extension Agent. If you installed SQL Anywhere Studio and then installed SNMP, the SNMP service will detect the Adaptive Server Anywhere SNMP Extension Agent automatically.

❖ **To restart the SNMP service (Control Panel)**

1. Open the Control Panel.
 - ◆ On Windows 2000, from the Start menu choose Settings ► Control Panel.
 - ◆ On Windows XP, from the Start menu choose Control Panel.
2. In the Control Panel, double-click Administrative Tools.
3. Double-click Services.
4. Right-click SNMP Service and choose Restart from the popup menu.

This stops and restarts the SNMP service.

❖ **To restart the SNMP service (Command line)**

1. Open a command prompt and execute the following command:

```
net stop snmp
```

This stops the SNMP service.

2. Execute the following command:

```
net start snmp
```

This starts the SNMP service.

Configuring the Adaptive Server Anywhere SNMP Extension Agent

The Adaptive Server Anywhere Extension Agent can monitor one or more databases. The databases to be monitored are stored in the *asasmp.ini* file with the following format:

```
[ASAagent]
TrapPollTime=time in seconds

[DBn]
ConnStr=connection string
UtilDbPwd=utility database password
CacheTime=time in seconds
Trap=trap information
Disabled=1 or 0
```

By default, your SQL Anywhere Studio installation places the *asasmp.ini* file in the *C:\Program Files\Sybase\SQL Anywhere 9\win32* directory.

Once you edit this file, you must restart the SNMP service or reset the Adaptive Server Anywhere SNMP Extension Agent so that the new settings are used by the Agent.

❖ To restart the SNMP service (Control Panel)

1. Open the Control Panel.
 - ◆ On Windows 2000, from the Start menu choose Settings ► Control Panel.
 - ◆ On Windows XP, from the Start menu choose Control Panel.
2. In the Control Panel, double-click Administrative Tools.
3. Double-click Services.
4. Right-click SNMP Service and choose Restart from the popup menu.
This stops and restarts the SNMP service.

❖ To restart the SNMP service (Command line)

1. Open a command prompt and execute the following command:

```
net stop snmp
```

This stops the SNMP service.

2. Execute the following command:

```
net start snmp
```

This starts the SNMP service.

❖ **To restart the Adaptive Server Anywhere SNMP Extension Agent**

1. Using your SNMP management tool, change the value of the `asaAgent.asaRestart` property, `1.3.6.1.4.1.897.2.3.6`, to **1**.

You can obfuscate the contents of the `asasmp.ini` file with simple encryption using the File Hiding utility (`dbfhide`).

☞ For more information, see [“Hiding the contents of .ini files” \[ASA Database Administration Guide, page 524\]](#).

The ASAAgent section

The ASAAgent section of the `asasmp.ini` file contains a `TrapPollTime` field with information about the Adaptive Server Anywhere Extension Agent. If the `TrapPollTime` field is not required, you can omit the entire section.

TrapPollTime This value specifies the poll frequency for dynamic traps if they are specified. The Adaptive Server Anywhere SNMP Extension Agent polls the values every 5 seconds by default. Setting this value to 0 disables dynamic traps. This field is optional.

The DBn section

Each **DBn** section of the `asasmp.ini` file describes a database, how to connect to it, and any dynamic traps that exist for the database. The fields in this section are case sensitive.

The value for *n* is a number that identifies the database. The numbers must start with 1, and numbers cannot be skipped. For example, if the `asasmp.ini` file contained entries for [DB1], [DB2], and [DB4], the [DB4] entry would be ignored because the file is missing the entry for [DB3].

ConnStr The connection string used to connect to the database. You must supply enough information to be able to connect to the database. This field is required.

- ◆ If you want to use an ODBC data source to connect to the database, it must be a *system* data source, not a *user* data source.
- ◆ If you want to use an integrated login, you must map to the SYSTEM account because the SNMP Agent runs as a service. However, this means that anything that runs as a service can then connect to the database without a password. Alternatively, you can change the account that the service runs under and then create an integrated login for that account.
- ◆ The string `ASTART=NO; IDLE=0; CON=SNMP; ASTOP=NO` is prepended to the connection string. This string does the following:
 - prevents the Adaptive Server Anywhere SNMP Extension Agent from trying to autostart a database server
 - disables idle timeout since it is likely that the Adaptive Server Anywhere SNMP Extension Agent will sit idle for some time

-
- names the connection so it can be identified
 - prevents the database from being shut down when the Adaptive Server Anywhere SNMP Extension Agent disconnects

If you specify any of these values in the connection string in the *asasnmp.ini* file, the values in the *asasnmp.ini* file will override the default settings.

UtilDbPwd When setting `asa.agent.asaStarted` to start a database, the Adaptive Server Anywhere SNMP Extension Agent attempts to connect to the database with the `DBF` parameter, which tells the database server where to find the database file. However, if the permission required to start the database is `DBA` (the default for the network server, which can also be set using the `-gd dba` option for both the personal and network servers), then the server will not allow the connection.

To start a database on such a server, the Adaptive Server Anywhere SNMP Extension Agent must connect as a user with `DBA` authority to a database already running on the same server. This can be done by connecting to the utility database. If you specify the utility database password (contained in the server's *util_db.ini* file) in the *asasnmp.ini* file, then to start a database, the Adaptive Server Anywhere Extension Agent connects to the utility database on the same server, executes the `START DATABASE` statement, and then disconnects. This field is optional.

CacheTime When data is retrieved from the database, it can be cached inside the Adaptive Server Anywhere SNMP Extension Agent, so that subsequent retrievals of the same type of data (for example, server properties or database statistics) do not require communication with the database. While caching the data means that you can obtain the data more quickly on subsequent retrievals, the data may be out of date. The `CacheTime` field can be used to change the cache time, or disable the cache by setting the value to 0. By default, the cache time is 30 seconds. When the `CacheTime` parameter is set to 0, the data retrieved is always be up-to-date because data is retrieved from the database for every request. This field is optional.

DBSpaceCacheTime The `rbmsDbLimitedResourceTable` in the RDBMS MIB contains information about dbspaces. When this information is retrieved from the database, it can also be cached inside the Adaptive Server Anywhere Extension Agent. The default cache time for dbspace information is 600 seconds (10 minutes). This field can be used to change the cache time (or disable the cache by setting the value to 0). This field is optional.

☞ For more information about the `rbmsDbLimitedResourceTable` table, see [“rbmsDbLimitedResourceTable” on page 44](#).

Trapf Creates a dynamic trap. The value *t* must be a positive integer

starting at 1. Skipping numbers is not allowed. This field is optional.

Disabled If set to 1, this database entry is skipped by the Adaptive Server Anywhere SNMP Extension Agent. This is useful for temporarily removing one database from the list of databases managed by the Adaptive Server Anywhere SNMP Extension Agent, without renumbering the rest. This field is optional.

☞ For information about creating traps, see [“Creating dynamic traps” on page 19](#).

Sample *asasnmplib.ini* file

The following is a sample *asasnmplib.ini* file for the Adaptive Server Anywhere SNMP Extension Agent.

```
[ASAAgent]
[DB1]
ConnStr=UID=DBA;PWD=SQL;ENG=server1;DBN=sales;DBF=sales.db
Trap1=1.1.5 > 50000
UtilDbPwd=test
[DB2]
ConnStr=UID=DBA;PWD=SQL;ENG=server1;DBN=field;DBF=field.db
UtilDbPwd=test
Disabled=1
[DB3]
ConnStr=UID=DBA;PWD=SQL;LINKS=tcpip;ENG=server2;DBN=hq;DBF=hq.db
UtilDbPwd=test
```

Because there are no parameters specified in the ASAAgent section, the Adaptive Server Anywhere SNMP Extension Agent will poll values every 5 seconds.

The Adaptive Server Anywhere SNMP Extension Agent is monitoring 3 different databases running on two different servers. Database 3 is running on a different machine, so the LINKS connection parameter is required to specify the protocol. A trap is specified for DB1, which fires when the number of bytes sent by the database server is greater than 50 000.

Obtaining values using the Adaptive Server Anywhere SNMP Extension Agent

Using the Adaptive Server Anywhere SNMP Extension Agent, you can retrieve the values of all the following:

- ◆ Database server properties

☞ For a list of the database server property OIDs, see [“Server properties” on page 29](#).

- ◆ Database server statistics

☞ For a list of the database server statistic OIDs, see “[Server statistics](#)” on page 27.

◆ Database options

☞ For a list of the database option OIDs, see “[Database options](#)” on page 36.

◆ Database properties

☞ For a list of the database property OIDs, see “[Database properties](#)” on page 33.

◆ Database statistics

☞ For a list of the database statistic OIDs, see “[Database statistics](#)” on page 31.

The way you retrieve these values will depend on your SNMP management software.

Examples

The table below provides a description and sample value that could be returned for the following OIDs.

OID	Explanation	Sample value
1.3.6.1.4.1.897.2.1.1.1.1	Server statistic ActiveReq on database 1	1
1.3.6.1.4.1.897.2.1.2.1.3	Server property C2 on database 3	NO
1.3.6.1.4.1.897.2.2.1.4.1	Database statistic CacheRead on database 1	11397
1.3.6.1.4.1.897.2.2.2.7.4	Database property CaseSensitivePasswords on database 4	OFF
1.3.6.1.4.1.897.2.2.3.5.2	Database option ANSI_INTEGER_OVERFLOW on database 2	OFF
1.3.6.1.4.1.897.2.3.1	Agent version	9.0.1(1841)
1.3.6.1.4.1.897.2.3.2.1	Connection string for database 1	UID=DBA;PWD=SQL; ENG=server1; DBN=sales; DBF=sales.db

Setting values using the Adaptive Server Anywhere SNMP Extension Agent

The Adaptive Server Anywhere SNMP Extension Agent responds to SNMP get, get-next, and set queries.

You can set any database option, some server properties, and one database property using the Adaptive Server Anywhere SNMP agent.

When setting database options, the Adaptive Server Anywhere SNMP agent executes the statement:

```
SET OPTION PUBLIC.opt = 'value'
```

When setting database and server properties, the `sa_server_option` system procedure is used.

The way you set these values depends on your SNMP management software.

☞ For the OIDs and information about the options and properties that can be set with the Adaptive Server Anywhere SNMP Extension Agent, see “The Adaptive Server Anywhere MIB” on page 24.

Executing stored procedures using the Adaptive Server Anywhere SNMP Extension Agent

The Adaptive Server Anywhere MIB includes an OID that allows you to execute a stored procedure using the Adaptive Server Anywhere SNMP Extension Agent. In order to execute the stored procedure, the user that the Adaptive Server Anywhere SNMP Extension Agent uses to connect must have one of the following:

- ◆ execute permission on the procedure
- ◆ be the owner of the procedure
- ◆ have DBA authority

Any result sets or return values generated by the procedure are ignored.

To execute a stored procedure using the Adaptive Server Anywhere SNMP Extension Agent, set the value of `asaAgent.asaProc` (OID 1.3.6.1.4.1.897.2.3.5.db, where *db* is the database number in the *asasnmplib.ini* file) to a string that is the name of a stored procedure. Optionally, you can supply arguments to the procedure; if no arguments are supplied, parentheses () are appended to the procedure name.

For example, setting the value of `asaAgent.asaProc` to the string `"pchin.updatesales('param1', 2)"` calls the `updatesales` stored procedure owned by user `pchin`.

The way you set the value of this OID to the procedure name will depend on your SNMP management software.

☞ For more information, see [“The Adaptive Server Anywhere MIB” on page 7](#).

Using traps

A **trap** is an OID that is sent by an SNMP agent when a particular event occurs. Traps are initiated by the SNMP agent and can be detected by SNMP management software, which can then either deal with the event directly or query the SNMP agent for more information.

In order to receive traps, you must configure the SNMP service. The SNMP service will receive the trap information and then forward it on somewhere; however, by default, this is nowhere, so any trap listeners you have running will not detect anything. The following steps show how to configure your SNMP Service to send traps to your current machine.

❖ To configure the SNMP service

1. Right-click My Computer and choose Manage from the popup menu.
The Computer Management dialog appears.
2. In the left pane, double-click Services and Applications.
3. In the left pane, double-click Services.
4. Locate SNMP Service in the list of services in the right pane, right-click it and choose Properties from the popup menu.
The SNMP Service property sheet appears.
5. Click the Traps tab.
6. On the Traps tab, click Add.
The SNMP Service Configuration dialog appears.
7. In the SNMP Service Configuration dialog, type **localhost** in the text box and then click Add.
8. Click OK to close the Service property sheet.

Adaptive Server
Anywhere SNMP
Extension Agent traps

The Adaptive Server Anywhere SNMP Extension Agent sends a trap whenever a connection is dropped by the database server. The OID of this trap is 1.3.6.1.2.1.39.2.1.

The only other traps sent by the Adaptive Server Anywhere agent are dynamic traps.

☞ For more information about dynamic traps, see [“Creating dynamic traps” on page 19](#).

Creating dynamic traps

A **dynamic trap** is a trap that is sent by the Adaptive Server Anywhere Extension Agent when a simple expression involving the value of a particular property, statistic, or option is true. Dynamic traps are created in the *asasmp.ini* file. The format of the trap information in the *asasmp.ini* file entry is as follows:

```
Trap<trapnum>=[1.3.6.1.4.1.897.2.]<oid>[.<dbnum>] <op> <value>
```

trapnum is the dynamic trap number. It must start at 1 and be sequential.

oid is the OID of the property, statistic, or option. OIDs in either the Adaptive Server Anywhere MIB or the RDBMS MIB are supported. If the OID given is an invalid Adaptive Server Anywhere or RDBMS OID, the Adaptive Server Anywhere MIB prefix (1.3.6.1.4.1.897.2.) is prepended.

☞ For a list of OIDs in the Adaptive Server Anywhere MIB, see [“Adaptive Server Anywhere MIB Reference” on page 23](#).

☞ For a list of OIDs in the RDBMS MIB, see [“RDBMS MIB Reference” on page 41](#).

dbnum is the database number. This field is optional, but if specified, it must match the database number of the [DBn] section of the *asasmp.ini* file.

op must have one of the following values:

- ◆ = or == (equality)
- ◆ !=, <>, or >< (inequality)
- ◆ <= or =< (less than or equal)
- ◆ >= or => (greater than or equal)
- ◆ < (less than)
- ◆ > (greater than)

Note

Only equality or inequality are supported for string values.

value is the value to use in the expression. String values may be enclosed in single or double quotes; these quotes will not be included in the value. If you want the beginning or closing quotation marks to be included in the string, you must double them. Note that single quotes occurring within the string should not be doubled.

You can specify as many trap fields as you wish in the *asasmp.ini* file. The OID used for the trap will be 1.3.6.1.4.1.897.2.4.1, and the data sent with the trap will indicate the trap number of the trap that was sent.

You can specify as many Trap fields as you wish in the *asasmp.ini* file. The OID used for the trap will be 1.3.6.1.4.1.897.2.4.1, and the data sent with the trap includes the following:

- ◆ the trap number (starts at 1 for the first dynamic trap sent by the Adaptive Server Anywhere SNMP agent)
- ◆ the database index
- ◆ the database name trap index (from the *asasmp.ini* file)
- ◆ the variable name
- ◆ the variable value (this is the current value of the variable, not necessarily the threshold value)

Dynamic trap behavior

Once a dynamic trap is triggered, the trap is not be sent again until the condition that caused it to be triggered changes to FALSE and then back to TRUE again.

For example, if you have a dynamic trap set using 1.1.11.1 >= 5120, then the trap is triggered when the server's cache size reaches 5 MB (= 5120 KB) and the dynamic trap is disabled, so no more traps are sent. The only way the trap is re-enabled is if the cache size later drops below 5 MB. You would then be notified if the cache size grew to 5 MB again.

Trap examples

Trap information	Description
Trap1=1.1.5 > 10000	Trap sent when the number of bytes sent from the server is greater than 10 000
Trap2=1.3.6.1.2.1.39.1.4.1.4.14.1 >= 10485760	Trap sent if the size of the transaction log file is larger than 10 MB

PART II

ADAPTIVE SERVER ANYWHERE SNMP EXTENSION AGENT REFERENCE

This section lists the OIDs supported by the Adaptive Server Anywhere SNMP Extension Agent. It lists the contents of the tables in the Adaptive Server Anywhere MIB and the RDBMS MIB.

CHAPTER 2

Adaptive Server Anywhere MIB Reference

About this chapter

This chapter contains descriptions of the tables in the Adaptive Server Anywhere MIB.

Contents

Topic:	page
The Adaptive Server Anywhere MIB	24

The Adaptive Server Anywhere MIB

The following sections list the OIDs of the statistics, properties, and options that can be retrieved and set using the Adaptive Server Anywhere SNMP Extension Agent. By default,

Agent

The Agent table lists information about the Adaptive Server Anywhere SNMP Extension Agent.

Writable properties are marked with an asterisk (*). The value *n* is the database number in the *asasmp.ini* file.

OID	Type	Name	Value returned
1.3.6.1.4.1.897.2.3.1	String	asaVersion	Agent version
1.3.6.1.4.1.897.2.3.2. <i>n</i>	String	asaDBConnStr	Connection string
1.3.6.1.4.1.897.2.3.3. <i>n</i>	Integer32	asaConnected*	1 if the agent is connected, 0 otherwise
1.3.6.1.4.1.897.2.3.4. <i>n</i>	Integer32	asaStarted*	1 if the database is started, 0 otherwise
1.3.6.1.4.1.897.2.3.5. <i>n</i>	String	asaProc*	” “
1.3.6.1.4.1.897.2.3.6	String	asaRestart*	0

asaMetaData tables

The following metadata tables are included in the Adaptive Server Anywhere MIB:

- ◆ asaSrvMetaData.asaSrvStatMetaDataTable
- ◆ asaSrvMetaData.asaSrvPropMetaDataTable
- ◆ asaSrvMetaData.asaDbStatMetaDataTable
- ◆ asaSrvMetaData.asaDbPropMetaDataTable
- ◆ asaSrvMetaData.asaDbOptMetaDataTable

asaSrvMetaData.asaSrvStatMetaDataTable

This table contains metadata about the database server statistics.

The value *db* is the database number in the *asasmp.ini* file.

OID	Type	Name	Value returned
1.3.6.1.4.1.897.2.4.1.1.1.1.db	Integer32	asaSrvStatIndex	db
1.3.6.1.4.1.897.2.4.1.1.1.2.db	Integer32	asaSrvStatObjType	1 ¹
1.3.6.1.4.1.897.2.4.1.1.1.3.db	Integer32	asaSrvStatType	1 ²
1.3.6.1.4.1.897.2.4.1.1.1.4.db	OID	asaSrvStatOID	OID of Adaptive Server Anywhere MIB entry ³
1.3.6.1.4.1.897.2.4.1.1.1.5.db	String	asaSrvStatName	Statistic name

¹ Values: 1=Server, 2=Database

² Values: 1=Statistic, 2=Property, 3=Option

³ The OID returned does not include the database number. You must append the database number to the OID before it can be used in a query.

asaSrvMetaData.asaSrvPropMetaDataTable

This table contains metadata about the database server properties.

The value *db* is the database number in the *asasnmplib.ini* file.

OID	Type	Name	Value returned
1.3.6.1.4.1.897.2.4.1.2.1.1.db	Integer32	asaSrvPropIndex	db
1.3.6.1.4.1.897.2.4.1.2.1.2.db	Integer32	asaSrvPropObjType	1 ¹
1.3.6.1.4.1.897.2.4.1.2.1.3.db	Integer32	asaSrvPropType	2 ²
1.3.6.1.4.1.897.2.4.1.2.1.4.db	OID	asaSrvPropOID	OID of Adaptive Server Anywhere MIB entry ³
1.3.6.1.4.1.897.2.4.1.2.1.5.db	String	asaSrvPropName	Property name

¹ Values: 1=Server, 2=Database

² Values: 1=Statistic, 2=Property, 3=Option

³ The OID returned does not include the database number. You must append the database number to the OID before it can be used in a query.

asaDbMetaData.asaDbStatMetaDataTable

This table contains metadata about the database statistics.

The value *db* is the database number in the *asasnmp.ini* file.

OID	Type	Name	Value returned
1.3.6.1.4.1.897.2.4.2.1.1.1. <i>db</i>	Integer32	asaDbStatIndex	<i>db</i>
1.3.6.1.4.1.897.2.4.2.1.1.2. <i>db</i>	Integer32	asaDbStatObjType	2 ¹
1.3.6.1.4.1.897.2.4.2.1.1.3. <i>db</i>	Integer32	asaDbStatType	1 ²
1.3.6.1.4.1.897.2.4.2.1.1.4. <i>db</i>	OID	asaDbStatOID	OID of Adaptive Server Anywhere MIB entry ³
1.3.6.1.4.1.897.2.4.2.1.1.5. <i>db</i>	String	asaDbStatName	Statistic name

¹ Values: 1=Server, 2=Database

² Values: 1=Statistic, 2=Property, 3=Option

³ The OID returned does not include the database number. You must append the database number to the OID before it can be used in a query.

asaDbMetaData.asaDbPropMetaDataTable

This table contains metadata about the database properties.

The value *db* is the database number in the *asasnmp.ini* file.

OID	Type	Name	Value returned
1.3.6.1.4.1.897.2.4.2.2.1.1. <i>db</i>	Integer32	asaDbPropIndex	<i>db</i>
1.3.6.1.4.1.897.2.4.2.2.1.2. <i>db</i>	Integer32	asaDbPropObjType	2 ¹
1.3.6.1.4.1.897.2.4.2.2.1.3. <i>db</i>	Integer32	asaDbPropType	2 ²
1.3.6.1.4.1.897.2.4.2.2.1.4. <i>db</i>	OID	asaDbPropOID	OID of Adaptive Server Anywhere MIB entry ³
1.3.6.1.4.1.897.2.4.2.2.1.5. <i>db</i>	String	asaDbPropName	Property name

¹ Values: 1=Server, 2=Database

² Values: 1=Statistic, 2=Property, 3=Option

³ The OID returned does not include the database number. You must append the database number to the OID before it can be used in a query.

asaDbMetaData.asaDbOptMetaDataTable

This table contains metadata about the database options.

The value *db* is the database number in the *asasmp.ini* file.

OID	Type	Name	Value returned
1.3.6.1.4.1.897.2.4.2.1.1.1. <i>db</i>	Integer32	asaDbOptIndex	<i>db</i>
1.3.6.1.4.1.897.2.4.2.1.1.2. <i>db</i>	Integer32	asaDbOptObjType	2 ¹
1.3.6.1.4.1.897.2.4.2.1.1.3. <i>db</i>	Integer32	asaDbOptType	3 ²
1.3.6.1.4.1.897.2.4.2.1.1.4. <i>db</i>	OID	asaDbOptOID	OID of Adaptive Server Anywhere MIB entry ³
1.3.6.1.4.1.897.2.4.2.1.1.5. <i>db</i>	String	asaDbOptName	Option name

¹ Values: 1=Server, 2=Database

² Values: 1=Statistic, 2=Property, 3=Option

³ The OID returned does not include the database number. You must append the database number to the OID before it can be used in a query.

Server statistics

This table lists the OIDs and names of the database server statistics that can be retrieved using the Adaptive Server Anywhere SNMP Extension Agent.

The value *n* is the database number in the *asasmp.ini* file.

OID	Type	Name	Statistic
1.3.6.1.4.1.897.2.1.1.1. <i>n</i>	Integer32	srvStatActiveReq	ActiveReq
1.3.6.1.4.1.897.2.1.1.2. <i>n</i>	Integer32	srvStatAvailIO	AvailIO
1.3.6.1.4.1.897.2.1.1.3. <i>n</i>	Counter64	srvStatBytesReceived	BytesReceived
1.3.6.1.4.1.897.2.1.1.4. <i>n</i>	Counter64	srvStatBytesReceivedUncomp	BytesReceivedUncomp
1.3.6.1.4.1.897.2.1.1.5. <i>n</i>	Counter64	srvStatBytesSent	BytesSent
1.3.6.1.4.1.897.2.1.1.6. <i>n</i>	Counter64	srvStatBytesSentUncomp	BytesSentUncomp
1.3.6.1.4.1.897.2.1.1.7. <i>n</i>	Counter64	srvStatCacheHitsEng	CacheHitsEng
1.3.6.1.4.1.897.2.1.1.8. <i>n</i>	Integer32	srvStatCachePinned	CachePinned

OID	Type	Name	Statistic
1.3.6.1.4.1.897.2.1.1.9.n	Counter64	srvStatCacheReadEng	CacheReadEng
1.3.6.1.4.1.897.2.1.1.10.n	Counter64	srvStatCacheReplacements	CacheReplacements
1.3.6.1.4.1.897.2.1.1.11.n	Integer32	srvStatCurrentCacheSize	CurrentCacheSize
1.3.6.1.4.1.897.2.1.1.12.n	Counter64	srvStatDiskReadEng	DiskReadEng
1.3.6.1.4.1.897.2.1.1.13.n	Integer32	srvStatFreeBuffers	FreeBuffers
1.3.6.1.4.1.897.2.1.1.14.n	Integer32	srvStatJavaGlobFix	JavaGlobFix
1.3.6.1.4.1.897.2.1.1.15.n	Integer32	srvStatLicensesInUse	LicensesInUse
1.3.6.1.4.1.897.2.1.1.16.n	Integer32	srvStatLockedHeapPages	LockedHeapPages
1.3.6.1.4.1.897.2.1.1.17.n	Counter64	srvStatMainHeapBytes	MainHeapBytes
1.3.6.1.4.1.897.2.1.1.18.n	Integer32	srvStatMainHeapPages	MainHeapPages
1.3.6.1.4.1.897.2.1.1.19.n	Integer32	srvStatMapPhysicalMemoryEng	MapPhysicalMemoryEng
1.3.6.1.4.1.897.2.1.1.20.n	Integer32	srvStatMaxCacheSize	MaxCacheSize
1.3.6.1.4.1.897.2.1.1.21.n	Integer32	srvStatMinCacheSize	MinCacheSize
1.3.6.1.4.1.897.2.1.1.22.n	Counter64	srvStatMultiPacketsReceived	MultiPacketsReceived
1.3.6.1.4.1.897.2.1.1.23.n	Counter64	srvStatMultiPacketsSent	MultiPacketsSent
1.3.6.1.4.1.897.2.1.1.24.n	Counter64	srvStatPacketsReceived	PacketsReceived
1.3.6.1.4.1.897.2.1.1.25.n	Counter64	srvStatPacketsReceivedUncomp	PacketsReceivedUncomp
1.3.6.1.4.1.897.2.1.1.26.n	Counter64	srvStatPacketsSent	PacketsSent
1.3.6.1.4.1.897.2.1.1.27.n	Counter64	srvStatPacketsSentUncomp	PacketsSentUncomp
1.3.6.1.4.1.897.2.1.1.28.n	Integer32	srvStatPeakCacheSize	PeakCacheSize
1.3.6.1.4.1.897.2.1.1.29.n	Integer32	srvStatRemoteputWait	RemoteputWait
1.3.6.1.4.1.897.2.1.1.30.n	Integer32	srvStatReq	Req
1.3.6.1.4.1.897.2.1.1.31.n	Counter64	srvStatSendFail	SendFail
1.3.6.1.4.1.897.2.1.1.32.n	Integer32	srvStatTotalBuffers	TotalBuffers
1.3.6.1.4.1.897.2.1.1.33.n	Integer32	srvStatUnschReq	UnschReq

Server properties

The following table lists OIDs and names of the database server properties that can be retrieved using the Adaptive Server Anywhere SNMP Extension Agent.

Writable properties are marked with an asterisk (*). The value *n* is the database number in the *asasmp.ini* file.

OID	Type	Name	Property
1.3.6.1.4.1.897.2.1.2.1.n	String	srvPropC2	C2
1.3.6.1.4.1.897.2.1.2.2.n	String	srvPropCharSet	CharSet
1.3.6.1.4.1.897.2.1.2.3.n	String	srvPropCommandLine	CommandLine
1.3.6.1.4.1.897.2.1.2.4.n	String	srvPropCompactPlatformVer	CompactPlatformVer
1.3.6.1.4.1.897.2.1.2.5.n	String	srvPropCompanyName	CompanyName
1.3.6.1.4.1.897.2.1.2.6.n	String	srvPropConnsDisabled*	ConnsDisabled
1.3.6.1.4.1.897.2.1.2.7.n	String	srvPropConsoleLogFile	ConsoleLogFile
1.3.6.1.4.1.897.2.1.2.8.n	String	srvPropDefaultCollation	DefaultCollation
1.3.6.1.4.1.897.2.1.2.9.n	String	srvPropIdleTimeout	IdleTimeout
1.3.6.1.4.1.897.2.1.2.10.n	String	srvPropIsIQ	IsIQ
1.3.6.1.4.1.897.2.1.2.11.n	String	srvPropIsJavaAvailable	IsJavaAvailable
1.3.6.1.4.1.897.2.1.2.12.n	String	srvPropIsNetworkServer	IsNetworkServer
1.3.6.1.4.1.897.2.1.2.13.n	String	srvPropIsRuntimeServer	IsRuntimeServer
1.3.6.1.4.1.897.2.1.2.14.n	String	srvPropJavaObjectsEnabled	JavaObjectsEnabled
1.3.6.1.4.1.897.2.1.2.15.n	String	srvPropLanguage	Language
1.3.6.1.4.1.897.2.1.2.16.n	String	srvPropLegalCopyright	LegalCopyright
1.3.6.1.4.1.897.2.1.2.17.n	String	srvPropLegalTrademarks	LegalTrademarks
1.3.6.1.4.1.897.2.1.2.18.n	String	srvPropLicenseCount	LicenseCount
1.3.6.1.4.1.897.2.1.2.19.n	String	srvPropLicensedCompany	LicensedCompany
1.3.6.1.4.1.897.2.1.2.20.n	String	srvPropLicensedUser	LicensedUser
1.3.6.1.4.1.897.2.1.2.21.n	String	srvPropLicenseType	LicenseType
1.3.6.1.4.1.897.2.1.2.22.n	String	srvPropLivenessTimeout*	LivenessTimeout

OID	Type	Name	Property
1.3.6.1.4.1.897.2.1.2.23.n	String	srvPropMachineName	MachineName
1.3.6.1.4.1.897.2.1.2.24.n	String	srvPropMaxMessage	MaxMessage
1.3.6.1.4.1.897.2.1.2.25.n	String	srvPropMessageWindowSize	MessageWindowSize
1.3.6.1.4.1.897.2.1.2.26.n	String	srvPropName	Name
1.3.6.1.4.1.897.2.1.2.27.n	String	srvPropNativeProcessorArchitecture	NativeProcessorArchitecture
1.3.6.1.4.1.897.2.1.2.28.n	String	srvPropNumProcessorsAvail	NumProcessorsAvail
1.3.6.1.4.1.897.2.1.2.29.n	String	srvPropNumProcessorsMax	NumProcessorsMax
1.3.6.1.4.1.897.2.1.2.30.n	String	srvPropOmniIdentifier	OmniIdentifier
1.3.6.1.4.1.897.2.1.2.31.n	String	srvPropPageSize	PageSize
1.3.6.1.4.1.897.2.1.2.32.n	String	srvPropPlatform	Platform
1.3.6.1.4.1.897.2.1.2.33.n	String	srvPropPlatformVer	PlatformVer
1.3.6.1.4.1.897.2.1.2.34.n	String	srvPropProcessCPU	ProcessCPU
1.3.6.1.4.1.897.2.1.2.35.n	String	srvPropProcessCPUSystem	ProcessCPUSystem
1.3.6.1.4.1.897.2.1.2.36.n	String	srvPropProcessCPUUser	ProcessCPUUser
1.3.6.1.4.1.897.2.1.2.37.n	String	srvPropProcessorArchitecture	ProcessorArchitecture
1.3.6.1.4.1.897.2.1.2.38.n	String	srvPropProductName	ProductName
1.3.6.1.4.1.897.2.1.2.39.n	String	srvPropProductVersion	ProductVersion
1.3.6.1.4.1.897.2.1.2.40.n	String	srvPropQuittingTime*	QuittingTime
1.3.6.1.4.1.897.2.1.2.41.n	String	srvPropRememberLastStatement*	RememberLastStatement
1.3.6.1.4.1.897.2.1.2.42.n	String	srvPropRequestFilterConn	RequestFilterConn
1.3.6.1.4.1.897.2.1.2.43.n	String	srvPropRequestFilterDB	RequestFilterDB
1.3.6.1.4.1.897.2.1.2.44.n	String	srvPropRequestLogFile*	RequestLogFile
1.3.6.1.4.1.897.2.1.2.45.n	String	srvPropRequestLogging*	RequestLogging
1.3.6.1.4.1.897.2.1.2.46.n	String	srvPropRequestLogMaxSize	RequestLogMaxSize
1.3.6.1.4.1.897.2.1.2.47.n	String	srvPropStartTime	StartTime
1.3.6.1.4.1.897.2.1.2.48.n	String	srvPropTempDir	TempDir

OID	Type	Name	Property
1.3.6.1.4.1.897.2.1.2.49.n	String	srvPropThreads	Threads
1.3.6.1.4.1.897.2.1.2.50.n	String	srvPropTimeZoneAdjustment	TimeZoneAdjustment
1.3.6.1.4.1.897.2.1.2.51.n	String	srvPropHttpPorts	HttpPorts
1.3.6.1.4.1.897.2.1.2.52.n	String	srvPropHttpsPorts	HttpsPorts
1.3.6.1.4.1.897.2.1.2.53.n	String	srvPropProfileFilterConn	ProfileFilterConn
1.3.6.1.4.1.897.2.1.2.54.n	String	srvPropProfileFilterUser	ProfileFilterUser
1.3.6.1.4.1.897.2.1.2.55.n	String	srvPropRequestLogNumFiles	RequestLogNumFiles
1.3.6.1.4.1.897.2.1.2.56.n	String	srvPropIsFipsAvailable	IsFipsAvailable
1.3.6.1.4.1.897.2.1.2.57.n	String	srvPropFipsMode	FipsMode

Database statistics

The following table lists the OIDs and names the database statistics that can be retrieved using the Adaptive Server Anywhere SNMP Extension Agent.

The value *n* is the database number in the *asasnmplib.ini* file.

OID	Type	Name	Property
1.3.6.1.4.1.897.2.2.1.1.n	Counter64	dbStatCacheHits	CacheHits
1.3.6.1.4.1.897.2.2.1.2.n	Integer32	dbStatCacheReadIndInt	CacheReadIndInt
1.3.6.1.4.1.897.2.2.1.3.n	Integer32	dbStatCacheReadIndLeaf	CacheReadIndLeaf
1.3.6.1.4.1.897.2.2.1.4.n	Counter64	dbStatCacheRead	CacheRead
1.3.6.1.4.1.897.2.2.1.5.n	Integer32	dbStatCacheReadTable	CacheReadTable
1.3.6.1.4.1.897.2.2.1.6.n	Integer32	dbStatChkpt	Chkpt
1.3.6.1.4.1.897.2.2.1.7.n	Integer32	dbStatChkptFlush	ChkptFlush
1.3.6.1.4.1.897.2.2.1.8.n	Integer32	dbStatChkptPage	ChkptPage
1.3.6.1.4.1.897.2.2.1.9.n	Integer32	dbStatCheckpointUrgency	CheckpointUrgency
1.3.6.1.4.1.897.2.2.1.10.n	Integer32	dbStatCheckpointLogBitmap-Size	CheckpointLogBitmap-Size
1.3.6.1.4.1.897.2.2.1.11.n	Integer32	dbStatCheckpointLogBitmap-PagesWritten	CheckpointLogBitmap-PagesWritten

OID	Type	Name	Property
1.3.6.1.4.1.897.2.2.1.12.n	Integer32	dbStatCheckpointLogCommitToDisk	CheckpointLogCommitToDisk
1.3.6.1.4.1.897.2.2.1.13.n	Integer32	dbStatCheckpointLogPageInUse	CheckpointLogPageInUse
1.3.6.1.4.1.897.2.2.1.14.n	Integer32	dbStatCheckpointLogPagesRelocated	CheckpointLogPagesRelocated
1.3.6.1.4.1.897.2.2.1.15.n	Integer32	dbStatCheckpointLogSavePreimage	CheckpointLogSavePreimage
1.3.6.1.4.1.897.2.2.1.16.n	Integer32	dbStatCheckpointLogSize	CheckpointLogSize
1.3.6.1.4.1.897.2.2.1.17.n	Integer32	dbStatCheckpointLogWrites	CheckpointLogWrites
1.3.6.1.4.1.897.2.2.1.18.n	Integer32	dbStatCheckpointLogPagesWritten	CheckpointLogPagesWritten
1.3.6.1.4.1.897.2.2.1.19.n	Integer32	dbStatCommitFile	CommitFile
1.3.6.1.4.1.897.2.2.1.20.n	Integer32	dbStatConnCount	ConnCount
1.3.6.1.4.1.897.2.2.1.21.n	Integer32	dbStatCurrIO	CurrIO
1.3.6.1.4.1.897.2.2.1.22.n	Integer32	dbStatCurrRead	CurrRead
1.3.6.1.4.1.897.2.2.1.23.n	Integer32	dbStatCurrWrite	CurrWrite
1.3.6.1.4.1.897.2.2.1.24.n	Integer32	dbStatDiskReadIndInt	DiskReadIndInt
1.3.6.1.4.1.897.2.2.1.25.n	Integer32	dbStatDiskReadIndLeaf	DiskReadIndLeaf
1.3.6.1.4.1.897.2.2.1.26.n	Counter64	dbStatDiskRead	DiskRead
1.3.6.1.4.1.897.2.2.1.27.n	Integer32	dbStatDiskReadTable	DiskReadTable
1.3.6.1.4.1.897.2.2.1.28.n	Counter64	dbStatDiskWrite	DiskWrite
1.3.6.1.4.1.897.2.2.1.29.n	Integer32	dbStatExtendDB	ExtendDB
1.3.6.1.4.1.897.2.2.1.30.n	Integer32	dbStatExtendTempWrite	ExtendTempWrite
1.3.6.1.4.1.897.2.2.1.31.n	Integer32	dbStatFullCompare	FullCompare
1.3.6.1.4.1.897.2.2.1.32.n	Integer32	dbStatGetData	GetData
1.3.6.1.4.1.897.2.2.1.33.n	Integer32	dbStatIdleCheck	IdleCheck
1.3.6.1.4.1.897.2.2.1.34.n	Integer32	dbStatIdleChkpt	IdleChkpt
1.3.6.1.4.1.897.2.2.1.35.n	Integer32	dbStatIdleChkTime	IdleChkTime

OID	Type	Name	Property
1.3.6.1.4.1.897.2.2.1.36.n	Integer32	dbStatIdleWrite	IdleWrite
1.3.6.1.4.1.897.2.2.1.37.n	Integer32	dbStatIndAdd	IndAdd
1.3.6.1.4.1.897.2.2.1.38.n	Integer32	dbStatIndLookup	IndLookup
1.3.6.1.4.1.897.2.2.1.39.n	Integer32	dbStatIOToRecover	IOToRecover
1.3.6.1.4.1.897.2.2.1.40.n	Integer32	dbStatJavaHeapSize	JavaHeapSize
1.3.6.1.4.1.897.2.2.1.41.n	Integer32	dbStatJavaNSSize	JavaNSSize
1.3.6.1.4.1.897.2.2.1.42.n	Integer32	dbStatLockTablePages	LockTablePages
1.3.6.1.4.1.897.2.2.1.43.n	Integer32	dbStatMapPages	MapPages
1.3.6.1.4.1.897.2.2.1.44.n	Integer32	dbStatMaxIO	MaxIO
1.3.6.1.4.1.897.2.2.1.45.n	Counter64	dbStatMaxRead	MaxRead
1.3.6.1.4.1.897.2.2.1.46.n	Integer32	dbStatMaxWrite	MaxWrite
1.3.6.1.4.1.897.2.2.1.47.n	Integer32	dbStatPageRelocations	PageRelocations
1.3.6.1.4.1.897.2.2.1.48.n	Integer32	dbStatProcedurePages	ProcedurePages
1.3.6.1.4.1.897.2.2.1.49.n	Integer32	dbStatQueryCachePages	QueryCachePages
1.3.6.1.4.1.897.2.2.1.50.n	Integer32	dbStatQueryLowMemoryStrategy	QueryLowMemoryStrategy
1.3.6.1.4.1.897.2.2.1.51.n	Counter64	dbStatQueryRowsMaterialized	QueryRowsMaterialized
1.3.6.1.4.1.897.2.2.1.52.n	Integer32	dbStatRecoveryUrgency	RecoveryUrgency
1.3.6.1.4.1.897.2.2.1.53.n	Integer32	dbStatLogFreeCommit	LogFreeCommit
1.3.6.1.4.1.897.2.2.1.54.n	Integer32	dbStatLogWrite	LogWrite
1.3.6.1.4.1.897.2.2.1.55.n	Integer32	dbStatRelocatableHeapPages	RelocatableHeapPages
1.3.6.1.4.1.897.2.2.1.56.n	Integer32	dbStatRollbackLogPages	RollbackLogPages
1.3.6.1.4.1.897.2.2.1.57.n	Integer32	dbStatTempTablePages	TempTablePages
1.3.6.1.4.1.897.2.2.1.58.n	Integer32	dbStatTriggerPages	TriggerPages
1.3.6.1.4.1.897.2.2.1.59.n	Integer32	dbStatViewPages	ViewPages

Database properties

The following table lists the OIDs and names of the database properties that

can be retrieved using the Adaptive Server Anywhere SNMP Extension Agent.

Writable properties are marked with an asterisk (*). The value *n* is the database number in the *asasmp.ini* file.

OID	Type	Name	Property
1.3.6.1.4.1.897.2.2.2.1. <i>n</i>	String	dbPropAlias	Alias
1.3.6.1.4.1.897.2.2.2.2. <i>n</i>	String	dbPropAuditingTypes	AuditingTypes
1.3.6.1.4.1.897.2.2.2.3. <i>n</i>	String	dbPropBlankPadding	BlankPadding
1.3.6.1.4.1.897.2.2.2.4. <i>n</i>	String	dbPropBlobArenas	BlobArenas
1.3.6.1.4.1.897.2.2.2.5. <i>n</i>	String	dbPropCapabilities	Capabilities
1.3.6.1.4.1.897.2.2.2.6. <i>n</i>	String	dbPropCaseSensitive	CaseSensitive
1.3.6.1.4.1.897.2.2.2.7. <i>n</i>	String	dbPropCaseSensitivePasswords	CaseSensitivePasswords
1.3.6.1.4.1.897.2.2.2.8. <i>n</i>	String	dbPropCharSet	CharSet
1.3.6.1.4.1.897.2.2.2.9. <i>n</i>	String	dbPropChecksum	Checksum
1.3.6.1.4.1.897.2.2.2.10. <i>n</i>	String	dbPropClusteredIndexes	ClusteredIndexes
1.3.6.1.4.1.897.2.2.2.11. <i>n</i>	String	dbPropCollation	Collation
1.3.6.1.4.1.897.2.2.2.12. <i>n</i>	String	dbPropCompressedBTrees	CompressedBTrees
1.3.6.1.4.1.897.2.2.2.13. <i>n</i>	String	dbPropCompression	Compression
1.3.6.1.4.1.897.2.2.2.14. <i>n</i>	String	dbPropCurrentRedoPos	CurrentRedoPos
1.3.6.1.4.1.897.2.2.2.15. <i>n</i>	String	dbPropDBFileFragments	DBFileFragments
1.3.6.1.4.1.897.2.2.2.16. <i>n</i>	String	dbPropDriveType	DriveType
1.3.6.1.4.1.897.2.2.2.17. <i>n</i>	String	dbPropEncryption	Encryption
1.3.6.1.4.1.897.2.2.2.18. <i>n</i>	String	dbPropFile	File
1.3.6.1.4.1.897.2.2.2.19. <i>n</i>	String	dbPropFileSize	FileSize
1.3.6.1.4.1.897.2.2.2.20. <i>n</i>	String	dbPropFileVersion	FileVersion
1.3.6.1.4.1.897.2.2.2.21. <i>n</i>	String	dbPropFreePageBitMaps	FreePageBitMaps
1.3.6.1.4.1.897.2.2.2.22. <i>n</i>	String	dbPropFreePages	FreePages
1.3.6.1.4.1.897.2.2.2.23. <i>n</i>	String	dbPropGlobalDBId	GlobalDBId
1.3.6.1.4.1.897.2.2.2.24. <i>n</i>	String	dbPropHistogramHashFix	HistogramHashFix

OID	Type	Name	Property
1.3.6.1.4.1.897.2.2.2.25.n	String	dbPropHistograms	Histograms
1.3.6.1.4.1.897.2.2.2.26.n	String	dbPropIndexStatistics	IndexStatistics
1.3.6.1.4.1.897.2.2.2.27.n	String	dbPropIQStore	IQStore
1.3.6.1.4.1.897.2.2.2.28.n	String	dbPropJDKVersion	JDKVersion
1.3.6.1.4.1.897.2.2.2.29.n	String	dbPropLanguage	Language
1.3.6.1.4.1.897.2.2.2.30.n	String	dbPropLargeProcedureIDs	LargeProcedureIDs
1.3.6.1.4.1.897.2.2.2.31.n	String	dbPropLogFileFragments	LogFileFragments
1.3.6.1.4.1.897.2.2.2.32.n	String	dbPropLogMirrorName	LogMirrorName
1.3.6.1.4.1.897.2.2.2.33.n	String	dbPropLogName	LogName
1.3.6.1.4.1.897.2.2.2.34.n	String	dbPropLTMGeneration	LTMGeneration
1.3.6.1.4.1.897.2.2.2.35.n	String	dbPropLTMTrunc	LTMTrunc
1.3.6.1.4.1.897.2.2.2.36.n	String	dbPropMultiByteCharSet	MultiByteCharSet
1.3.6.1.4.1.897.2.2.2.37.n	String	dbPropName	Name
1.3.6.1.4.1.897.2.2.2.38.n	String	dbPropNamedConstraints	NamedConstraints
1.3.6.1.4.1.897.2.2.2.39.n	String	dbPropPageSize	PageSize
1.3.6.1.4.1.897.2.2.2.40.n	String	dbPropPreserveSource	PreserveSource
1.3.6.1.4.1.897.2.2.2.41.n	String	dbPropProcedureProfiling*	ProcedureProfiling
1.3.6.1.4.1.897.2.2.2.42.n	String	dbPropReadOnly	ReadOnly
1.3.6.1.4.1.897.2.2.2.43.n	String	dbPropRemoteTrunc	RemoteTrunc
1.3.6.1.4.1.897.2.2.2.44.n	String	dbPropSeparateCheckpointLog	SeparateCheckpointLog
1.3.6.1.4.1.897.2.2.2.45.n	String	dbPropSeparateForeignKeys	SeparateForeignKeys
1.3.6.1.4.1.897.2.2.2.46.n	String	dbPropStringHistogramsFix	StringHistogramsFix
1.3.6.1.4.1.897.2.2.2.47.n	String	dbPropSyncTrunc	SyncTrunc
1.3.6.1.4.1.897.2.2.2.48.n	String	dbPropTableBitMaps	TableBitMaps
1.3.6.1.4.1.897.2.2.2.49.n	String	dbPropTablesQualTriggers	TablesQualTriggers
1.3.6.1.4.1.897.2.2.2.50.n	String	dbPropTempFileName	TempFileName
1.3.6.1.4.1.897.2.2.2.51.n	String	dbPropTransactionsSpanLogs	TransactionsSpanLogs
1.3.6.1.4.1.897.2.2.2.52.n	String	dbPropVariableHashSize	VariableHashSize

OID	Type	Name	Property
1.3.6.1.4.1.897.2.2.2.53.n	String	dbPropUniqueIdentifier	UniqueIdentifier

Database options

The following table lists the OIDs and names of the database options that can be retrieved using the Adaptive Server Anywhere SNMP Extension Agent.

Writable options are marked with an asterisk (*). The value *n* is the database number in the *asasmp.ini* file.

OID	Type	Name	Option
1.3.6.1.4.1.897.2.2.3.1.n	String	dbOptAllowNullsByDefault*	Allow_nulls_by_default
1.3.6.1.4.1.897.2.2.3.2.n	String	dbOptAnsiNull*	AnsiNull
1.3.6.1.4.1.897.2.2.3.3.n	String	dbOptAnsiBlanks*	Ansi_blanks
1.3.6.1.4.1.897.2.2.3.4.n	String	dbOptAnsiCloseCursorsOn-Rollback*	Ansi_close_cursors_on_rollback
1.3.6.1.4.1.897.2.2.3.5.n	String	dbOptAnsiIntegerOverflow*	Ansi_integer_overflow
1.3.6.1.4.1.897.2.2.3.6.n	String	dbOptAnsiPermissions*	Ansi_permissions
1.3.6.1.4.1.897.2.2.3.7.n	String	dbOptAnsiUpdateConstraints*	Ansi_update_constraints
1.3.6.1.4.1.897.2.2.3.8.n	String	dbOptAuditing*	Auditing
1.3.6.1.4.1.897.2.2.3.9.n	String	dbOptAuditingOptions*	Auditing_options
1.3.6.1.4.1.897.2.2.3.10.n	String	dbOptAutomaticTimestamp*	Automatic_timestamp
1.3.6.1.4.1.897.2.2.3.11.n	String	dbOptBackgroundPriority*	Background_priority
1.3.6.1.4.1.897.2.2.3.12.n	String	dbOptBlocking*	Blocking
1.3.6.1.4.1.897.2.2.3.13.n	Integer32	dbOptBlockingTimeout*	Blocking_timeout
1.3.6.1.4.1.897.2.2.3.14.n	String	dbOptChained*	Chained
1.3.6.1.4.1.897.2.2.3.15.n	Integer32	dbOptCheckpointTime*	Checkpoint_time
1.3.6.1.4.1.897.2.2.3.16.n	Integer32	dbOptCisOption*	Cis_option
1.3.6.1.4.1.897.2.2.3.17.n	Integer32	dbOptCisRowsetSize*	Cis_rowset_size
1.3.6.1.4.1.897.2.2.3.18.n	String	dbOptCloseOnEndtrans*	Close_on_endtrans

OID	Type	Name	Option
1.3.6.1.4.1.897.2.2.3.19.n	String	dbOptConnectionAuthenticat- tion*	Connection_authentication
1.3.6.1.4.1.897.2.2.3.20.n	String	dbOptContinueAfterRaiseer- ror*	Continue_after_raise_error
1.3.6.1.4.1.897.2.2.3.21.n	String	dbOptConversionError*	Conversion_error
1.3.6.1.4.1.897.2.2.3.22.n	String	dbOptCooperativeCommits*	Cooperative_commits
1.3.6.1.4.1.897.2.2.3.23.n	Integer32	dbOptCooperativeCommit- Timeout*	Cooperative_commit_ timeout
1.3.6.1.4.1.897.2.2.3.24.n	String	dbOptDatabaseAuthenticat- tion*	Database_authentication
1.3.6.1.4.1.897.2.2.3.25.n	String	dbOptDateFormat*	Date_format
1.3.6.1.4.1.897.2.2.3.26.n	String	dbOptDateOrder*	Date_order
1.3.6.1.4.1.897.2.2.3.27.n	String	dbOptDebugMessages*	Debug_messages
1.3.6.1.4.1.897.2.2.3.28.n	String	dbOptDedicatedTask*	Dedicated_task
1.3.6.1.4.1.897.2.2.3.29.n	Integer32	dbOptDefaultTimestampIn- crement*	Default_timestamp_ increment
1.3.6.1.4.1.897.2.2.3.30.n	String	dbOptDelayedCommits*	Delayed_commits
1.3.6.1.4.1.897.2.2.3.31.n	Integer32	dbOptDelayedCommitTime- out*	Delayed_commit_timeout
1.3.6.1.4.1.897.2.2.3.32.n	String	dbOptDivideByZeroError*	Divide_by_zero_error
1.3.6.1.4.1.897.2.2.3.33.n	String	dbOptEscapeCharacter*	Escape_character
1.3.6.1.4.1.897.2.2.3.34.n	String	dbOptExcludeOperators*	Exclude_operators
1.3.6.1.4.1.897.2.2.3.35.n	String	dbOptExtendedJoinSyntax*	Extended_join_syntax
1.3.6.1.4.1.897.2.2.3.36.n	String	dbOptFireTriggers*	Fire_triggers
1.3.6.1.4.1.897.2.2.3.37.n	Integer32	dbOptFirstDayOfWeek*	First_day_of_week
1.3.6.1.4.1.897.2.2.3.38.n	String	dbOptFloatAsDouble*	Float_as_double
1.3.6.1.4.1.897.2.2.3.39.n	String	dbOptForceViewCreation*	Force_view_creation
1.3.6.1.4.1.897.2.2.3.40.n	String	dbOptForXmlNullTreatment*	For_xml_null_treatment
1.3.6.1.4.1.897.2.2.3.41.n	Integer32	dbOptGlobalDatabaseId*	Global_database_id
1.3.6.1.4.1.897.2.2.3.42.n	Integer32	dbOptIsolationLevel*	Isolation_level

OID	Type	Name	Option
1.3.6.1.4.1.897.2.2.3.43.n	Integer32	dbOptJavaHeapSize*	Java_heap_size
1.3.6.1.4.1.897.2.2.3.44.n	String	dbOptJavaInputOutput*	Java_input_output
1.3.6.1.4.1.897.2.2.3.45.n	Integer32	dbOptJavaNamespaceSize*	Java_namespace_size
1.3.6.1.4.1.897.2.2.3.46.n	Integer32	dbOptJavaPageBufferSize*	Java_page_buffer_size
1.3.6.1.4.1.897.2.2.3.47.n	String	dbOptLockRejectedRows*	Lock_rejected_rows
1.3.6.1.4.1.897.2.2.3.48.n	String	dbOptLoginMode*	Login_mode
1.3.6.1.4.1.897.2.2.3.49.n	String	dbOptLoginProcedure*	Login_procedure
1.3.6.1.4.1.897.2.2.3.50.n	String	dbOptLogDetailedPlans*	Log_detailed_plans
1.3.6.1.4.1.897.2.2.3.51.n	Integer32	dbOptLogMaxRequests*	Log_max_requests
1.3.6.1.4.1.897.2.2.3.52.n	Integer32	dbOptMaxCursorCount*	Max_cursor_count
1.3.6.1.4.1.897.2.2.3.53.n	Integer32	dbOptMaxHashSize*	Max_hash_size
1.3.6.1.4.1.897.2.2.3.54.n	Integer32	dbOptMaxPlansCached*	Max_plans_cached
1.3.6.1.4.1.897.2.2.3.55.n	Integer32	dbOptMaxRecursiveIterations*	Max_recursive_iterations
1.3.6.1.4.1.897.2.2.3.56.n	Integer32	dbOptMaxStatementCount*	Max_statement_count
1.3.6.1.4.1.897.2.2.3.57.n	Integer32	dbOptMaxWorkTableHash-Size*	Max_work_table_hash_size
1.3.6.1.4.1.897.2.2.3.58.n	Integer32	dbOptMinPasswordLength*	Min_password_length
1.3.6.1.4.1.897.2.2.3.59.n	Integer32	dbOptInternal	Internal
1.3.6.1.4.1.897.2.2.3.60.n	Integer32	dbOptNearestCentury*	Nearest_century
1.3.6.1.4.1.897.2.2.3.61.n	String	dbOptNonKeywords*	Non_keywords
1.3.6.1.4.1.897.2.2.3.62.n	String	dbOptODBCDistinguishCharAndVarchar*	ODBC_distinguish_char_and_varchar
1.3.6.1.4.1.897.2.2.3.63.n	String	dbOptOnCharsetConversion-Failure*	On_charset_conversion_failure
1.3.6.1.4.1.897.2.2.3.64.n	String	dbOptOnTsqlError*	On_tsql_error
1.3.6.1.4.1.897.2.2.3.65.n	String	dbOptOptimisticWaitForCommit*	Optimistic_wait_for_commit
1.3.6.1.4.1.897.2.2.3.66.n	String	dbOptOptimizationGoal*	Optimization_goal

OID	Type	Name	Option
1.3.6.1.4.1.897.2.2.3.67.n	Integer32	dbOptOptimizationLevel*	Optimization_level
1.3.6.1.4.1.897.2.2.3.68.n	String	dbOptOptimizationLogging*	Optimization_logging
1.3.6.1.4.1.897.2.2.3.69.n	String	dbOptOptimizationWorkload*	Optimization_workload
1.3.6.1.4.1.897.2.2.3.70.n	Integer32	dbOptPinnedCursorPer- centOfCache*	Pinned_cursor_percent_of_ cache
1.3.6.1.4.1.897.2.2.3.71.n	Integer32	dbOptPrecision*	Precision
1.3.6.1.4.1.897.2.2.3.72.n	String	dbOptPrefetch*	Prefetch
1.3.6.1.4.1.897.2.2.3.73.n	String	dbOptPreserveSourceFormat*	Preserve_source_format
1.3.6.1.4.1.897.2.2.3.74.n	String	dbOptPreventArticlePkeyUp- date*	Prevent_article_pkey_update
1.3.6.1.4.1.897.2.2.3.75.n	String	dbOptQueryPlanOnOpen*	Query_plan_on_open
1.3.6.1.4.1.897.2.2.3.76.n	String	dbOptQuotedIdentifier*	Quoted_identifier
1.3.6.1.4.1.897.2.2.3.77.n	String	dbOptReadPastDeleted*	Read_past_deleted
1.3.6.1.4.1.897.2.2.3.78.n	Integer32	dbOptRecoveryTime*	Recovery_time
1.3.6.1.4.1.897.2.2.3.79.n	String	dbOptReplicateAll*	Replicate_all
1.3.6.1.4.1.897.2.2.3.80.n	String	dbOptReturnDateTime- AsString*	Return_date_time_as_string
1.3.6.1.4.1.897.2.2.3.81.n	String	dbOptReturnJavaAsString*	Return_java_as_string
1.3.6.1.4.1.897.2.2.3.82.n	String	dbOptRITriggerTime*	RI_trigger_time
1.3.6.1.4.1.897.2.2.3.83.n	String	dbOptRowCounts*	Row_counts
1.3.6.1.4.1.897.2.2.3.84.n	Integer32	dbOptScale*	Scale
1.3.6.1.4.1.897.2.2.3.85.n	String	dbOptSortCollation*	Sort_collation
1.3.6.1.4.1.897.2.2.3.86.n	String	dbOptSQLFlaggerError- Level*	SQL_flagger_error_level
1.3.6.1.4.1.897.2.2.3.87.n	String	dbOptSQLFlaggerWarn- ingLevel*	SQL_flagger_warning_level
1.3.6.1.4.1.897.2.2.3.88.n	String	dbOptStringRtruncation*	String_rtruncation
1.3.6.1.4.1.897.2.2.3.89.n	String	dbOptSubsumeRowLocks*	Subsume_row_locks
1.3.6.1.4.1.897.2.2.3.90.n	String	dbOptSuppressTDSDebug- ging*	Suppress_TDS_debugging

OID	Type	Name	Option
1.3.6.1.4.1.897.2.2.3.91.n	String	dbOptTDSEmptyStringIs-Null*	TDS_empty_string_is_null
1.3.6.1.4.1.897.2.2.3.92.n	Integer32	dbOptThreadCount*	Thread_count
1.3.6.1.4.1.897.2.2.3.93.n	Integer32	dbOptThreadStack*	Thread_stack
1.3.6.1.4.1.897.2.2.3.94.n	Integer32	dbOptThreadSwaps*	Thread_swaps
1.3.6.1.4.1.897.2.2.3.95.n	String	dbOptTimestampFormat*	Timestamp_format
1.3.6.1.4.1.897.2.2.3.96.n	String	dbOptTimeFormat*	Time_format
1.3.6.1.4.1.897.2.2.3.97.n	Integer32	dbOptTimeZoneAdjustment*	Time_zone_adjustment
1.3.6.1.4.1.897.2.2.3.98.n	String	dbOptTruncateDateValues*	Truncate_date_values
1.3.6.1.4.1.897.2.2.3.99.n	String	dbOptTruncateTimestampValues*	Truncate_timestamp_values
1.3.6.1.4.1.897.2.2.3.100.n	String	dbOptTruncateWithAutocommit*	Truncate_with_auto_commit
1.3.6.1.4.1.897.2.2.3.101.n	String	dbOptTsqlHexConstant*	Tsql_hex_constant
1.3.6.1.4.1.897.2.2.3.102.n	String	dbOptTsqlVariables*	Tsql_variables
1.3.6.1.4.1.897.2.2.3.103.n	String	dbOptUpdateStatistics*	Update_statistics
1.3.6.1.4.1.897.2.2.3.104.n	String	dbOptUpgradeDatabaseCapability*	Upgrade_database_capability
1.3.6.1.4.1.897.2.2.3.105.n	String	dbOptUserEstimates*	User_estimates
1.3.6.1.4.1.897.2.2.3.106.n	String	dbOptWaitForCommit*	Wait_for_commit
1.3.6.1.4.1.897.2.2.3.107.n	String	dbOptTempSpaceLimitCheck*	Temp_space_limit_check
1.3.6.1.4.1.897.2.2.3.108.n	Integer32	dbOptRemoteIdleTimeout*	Remote_idle_timeout
1.3.6.1.4.1.897.2.2.3.109.n	Integer32	dbOptInternal	Internal
1.3.6.1.4.1.897.2.2.3.110.n	String	dbOptODBCDescribeBinaryAsVarbinary*	ODBC_describe_binary_as_varbinary
1.3.6.1.4.1.897.2.2.3.111.n	String	dbOptRollbackOnDeadlock	Rollback_on_deadlock
1.3.6.1.4.1.897.2.2.3.112.n	String	dbOptIntegratedServerName*	Integrated_server_name
1.3.6.1.4.1.897.2.2.3.113.n	String	dbOptLogDeadlocks*	Log_deadlocks

CHAPTER 3

RDBMS MIB Reference

About this chapter

This chapter contains descriptions of each of the tables in the RDBMS MIB.

Contents

Topic:	page
The RDBMS MIB	42

The RDBMS MIB

The following sections list the OIDs of the values that can be retrieved using the Adaptive Server Anywhere SNMP Extension Agent. By default, the RDBMS MIB is located in *C:\Program Files\Sybase\SQL Anywhere 9\snmp\RDBMS-MIB.mib*.

rdbmsDbTable

This table lists information about the databases installed on a system.

The value *db* is the database number in the *asasnmplib.ini* file.

OID	Type	Name	Value returned
1.3.6.1.2.1.39.1.1.1.1.db	Integer	rdbmsDbIndex	<i>db</i>
1.3.6.1.2.1.39.1.1.1.2.db	OID	rdbmsDbPrivateMibOID	1.3.6.1.4.1.897.2
1.3.6.1.2.1.39.1.1.1.3.db	String	rdbmsDbVendorName	property('CompanyName')
1.3.6.1.2.1.39.1.1.1.4.db	String	rdbmsDbName	db_property('name')
1.3.6.1.2.1.39.1.1.1.5.db	String	rdbmsDbContact	property('LicensedUser')

rdbmsDbInfoTable

This table provides additional information about the databases on the system.

The value *db* is the database number in the *asasnmplib.ini* file.

OID	Type	Name	Value returned
1.3.6.1.2.1.39.1.2.1.1.db	String	rdbmsDbInfoProduct-Name	property('PropertyName')
1.3.6.1.2.1.39.1.2.1.2.db	String	rdbmsDbInfoVersion	property('ProductVersion')

OID	Type	Name	Value returned
1.3.6.1.2.1.39.1.2.1.3.db	Integer	rdbmsDbInfoSizeUnits	Calculated based on dbInfoSizeAllocated and dbInfoSizeUsed. <ul style="list-style-type: none"> ◆ 1=bytes ◆ 2=KB ◆ 3=MB ◆ 4=GB ◆ 5=TB (Each unit is 1024 times the previous.)
1.3.6.1.2.1.39.1.2.1.4.db	Integer	rdbmsDbInfoSizeAllocated	db_property('pagesize') * db_property('filesize')
1.3.6.1.2.1.39.1.2.1.5.db	Integer	rdbmsDbInfoSizeUsed	db_property('pagesize') * (db_property('filesize') - db_property('freepages'))
1.3.6.1.2.1.39.1.2.1.6.db	String	rdbmsDbInfoLastBackup	NULL ¹

¹ This OID is not currently supported by the Adaptive Server Anywhere SNMP Extension Agent.

rdbmsDbParamTable

This table lists the configuration parameters for the databases on the system.

The value *db* is the database number in the *asasnmplib.ini* file, while *n* is the index of the option in the *asa.2.3* subtree.

OID	Type	Name	Value returned
1.3.6.1.2.1.39.1.3.1.1.db	String	rdbmsDbParamName	Option name
1.3.6.1.2.1.39.1.3.1.2.db	Integer	rdbmsDbParamSubIndex	<i>n</i>
1.3.6.1.2.1.39.1.3.1.3.db	OID	rdbmsDbParamID	OID in Adaptive Server Anywhere MIB corresponding to this option
1.3.6.1.2.1.39.1.3.1.4.db	String	rdbmsDbParamCurrValue	Option value
1.3.6.1.2.1.39.1.3.1.5.db	String	rdbmsDbParamComment	NULL ¹

¹ This OID is not currently supported by the Adaptive Server Anywhere SNMP Extension Agent.

rdbmsDbLimitedResourceTable

This table lists free space information on each dbspace. In this table, *n* represents each dbspace as follows:

- ◆ 1-13 are for normal dbspaces (numbered 0-12 in the database)
- ◆ 14 is the transaction log file
- ◆ 15 is the transaction log mirror file
- ◆ 16 is the temporary file
- ◆ 17 is the write file

The value *db* is the database number in the *asasnmplib.ini* file.

OID	Type	Name	Value returned
1.3.6.1.2.1.39.1.4.1.1. <i>n.db</i>	String	rdbmsDbLimitedResource-Name	Name of dbspace, or Transaction Log, Transaction Log Mirror, Temporary File, or Write File .
1.3.6.1.2.1.39.1.4.1.2. <i>n.db</i>	OID	rdbmsDbLimitedResourceID	1.3.6.1.4.1.897.2
1.3.6.1.2.1.39.1.4.1.3. <i>n.db</i>	Integer	rdbmsDbLimitedResource-Limit	Free space available on disk + current file size, in bytes
1.3.6.1.2.1.39.1.4.1.4. <i>n.db</i>	Integer	rdbmsDbLimitedResourceCurrent	Current file size
1.3.6.1.2.1.39.1.4.1.5. <i>n.db</i>	Integer	rdbmsDbLimitedResource-Highwater	Current size
1.3.6.1.2.1.39.1.4.1.6. <i>n.db</i>	Integer	rdbmsDbLimitedResource-Failure	0 ¹
1.3.6.1.2.1.39.1.4.1.7. <i>n.db</i>	String	rdbmsDbLimitedResourceDescription	"Bytes"

¹ This OID is not currently supported by the Adaptive Server Anywhere SNMP Extension Agent.

rdbmsSrvTable

This table lists the database servers running or installed on your system.

The value *db* is the database number in the *asasnmp.ini* file.

OID	Type	Name	Value returned
1.3.6.1.2.1.39.1.5.1.1. <i>db</i>	OID	rdbmsSrvPrivateMibOID	1.3.6.1.4.1.897.2
1.3.6.1.2.1.39.1.5.1.2. <i>db</i>	String	rdbmsSrvVendorName	property('CompanyName')
1.3.6.1.2.1.39.1.5.1.3. <i>db</i>	String	rdbmsSrvProductName	property('ProductName')
1.3.6.1.2.1.39.1.5.1.4. <i>db</i>	String	rdbmsSrvContact	property('LicencedCompany')

rdbmsSrvInfoTable

This table lists additional information about the database servers in your system.

The value *db* is the database number in the *asasnmp.ini* file.

OID	Type	Name	Value returned
1.3.6.1.2.1.39.1.6.1.1. <i>db</i>	Integer	rdbmsSrvInfoStartupTime	property('StartTime')
1.3.6.1.2.1.39.1.6.1.2. <i>db</i>	Integer	rdbmsSrvInfoFinishedTransactions	0 ¹
1.3.6.1.2.1.39.1.6.1.3. <i>db</i>	Integer	rdbmsSrvInfoDiskReads	property('DiskReadEng')
1.3.6.1.2.1.39.1.6.1.4. <i>db</i>	Integer	rdbmsSrvInfoLogicalReads	0 ¹
1.3.6.1.2.1.39.1.6.1.5. <i>db</i>	Integer	rdbmsSrvInfoDiskWrites	prop- erty('DiskWriteEng')
1.3.6.1.2.1.39.1.6.1.6. <i>db</i>	Integer	rdbmsSrvInfoLogicalWrites	0 ¹
1.3.6.1.2.1.39.1.6.1.7. <i>db</i>	Integer	rdbmsSrvInfoPageReads	0 ¹
1.3.6.1.2.1.39.1.6.1.8. <i>db</i>	Integer	rdbmsSrvInfoPageDiskOutOfWrites	0 ¹
1.3.6.1.2.1.39.1.6.1.9. <i>db</i>	Integer	rdbmsSrvInfoSpaces	0 ¹
1.3.6.1.2.1.39.1.6.1.10. <i>db</i>	Integer	rdbmsSrvInfoHandledRequests	property('Req')
1.3.6.1.2.1.39.1.6.1.11. <i>db</i>	Integer	rdbmsSrvInfoRequestRecvs	prop- erty('PacketsReceivedUncomp')
1.3.6.1.2.1.39.1.6.1.12. <i>db</i>	Integer	rdbmsSrvInfoRequestSends	prop- erty('PacketsSentUncomp')

OID	Type	Name	Value returned
1.3.6.1.2.1.39.1.6.1.13.db	Integer	rdbmsSrvInfoHighwaterInboundAssociations	0 ¹
1.3.6.1.2.1.39.1.6.1.14.db	Integer	rdbmsSrvInfoMaxInboundAssociations	0 ¹

¹ This OID is not currently supported by the Adaptive Server Anywhere SNMP Extension Agent.

rdbmsSrvParamTable

This table lists the server options that can be set by the Adaptive Server Anywhere SNMP Extension Agent through the Adaptive Server Anywhere MIB. *n* is the index, as follows:

<i>n</i>	Server option
1	ConnsDisabled
2	LivenessTimeout (default)
3	QuittingTime
4	RememberLastStatement
5	RequestLogFile
6	RequestLogging

The value *db* is the database number in the *asasmp.ini* file.

OID	Type	Name	Value returned
1.3.6.1.2.1.39.1.7.1.1.n.db	String	rdbmsDbSrvParamName	Name of option <i>n</i>
1.3.6.1.2.1.39.1.7.1.2.n.db	Integer	rdbmsDbSrvParamSubIndex	<i>n</i>
1.3.6.1.2.1.39.1.7.1.3.n.db	OID	rdbmsDbSrvParamID	1.3.6.1.4.1.897.2
1.3.6.1.2.1.39.1.7.1.4.n.db	String	rdbmsDbSrvParamCurrValue	Current value of option <i>n</i>
1.3.6.1.2.1.39.1.7.1.5.n.db	String	rdbmsDbSrvParamComment	Full name of option <i>n</i>

rdbmsSrvLimitedResourceTable

This table contains information about server configuration parameters.

The value *db* is the database number in the *asasmp.ini* file, while *n* is the index of the resource as follows:

<i>n</i>	Name	Resource	Resource limit
1	Connections	property('LicensesInUse')	property('LicenseCount')
2	Processors	property('NumProcessorsAvail')	property('NumProcessorsMax') If this is 0, then it returns property('NumProcessorsAvail')

OID	Type	Name	Value returned
1.3.6.1.2.1.39.1.8.1.1. <i>db</i>	String	rdbmsSrvLimitedResource-Name	Name of resource <i>n</i>
1.3.6.1.2.1.39.1.8.1.2. <i>db</i>	OID	rdbmsSrvLimitedResourceID	OID in Adaptive Server Anywhere MIB corresponding to this option
1.3.6.1.2.1.39.1.8.1.3. <i>db</i>	Integer	rdbmsSrvLimitedResource-Limit	Upper limit of resource <i>n</i>
1.3.6.1.2.1.39.1.8.1.4. <i>db</i>	Integer	rdbmsSrvLimitedResource-Current	Current value of resource <i>n</i>
1.3.6.1.2.1.39.1.8.1.5. <i>db</i>	Integer	rdbmsSrvLimitedResource-Highwater	Current value of resource <i>n</i>
1.3.6.1.2.1.39.1.8.1.6. <i>db</i>	Integer	rdbmsSrvLimitedResource-Failures	0 ¹
1.3.6.1.2.1.39.1.8.1.7. <i>db</i>	String	rdbmsSrvLimitedResourceDescription	Name of resource <i>n</i>

¹ This OID is not currently supported by the Adaptive Server Anywhere SNMP Extension Agent.



Index

A

ActiveReq property	
ASA SNMP Extension Agent OID	27
Adaptive Server Anywhere MIB	
about	7
Agent table	24
asaDbOptMetaDataTable	27
asaDbPropMetaDataTable	26
asaDbStatMetaDataTable	26
asaMetaData tables	24
asaSrvPropMetaDataTable	25
asaSrvStatMetaDataTable	24
database options	36
database properties	33
database statistics	31
list of tables	24
server properties	29
server statistics	27
Adaptive Server Anywhere MIB reference	23
Adaptive Server Anywhere SNMP Extension Agent	
about	3
asasnmp.ini file	12
configuring	10
dynamic traps	19
executing functions	17
executing stored procedures	17
restarting	12
supported MIBs	6
supported platforms	4
Agent table	
Adaptive Server Anywhere MIB	24
agents	
about	6
Alias property	
ASA SNMP Extension Agent OID	34
ALLOW_NULLS_BY_DEFAULT option	
ASA SNMP Extension Agent OID	36
ANSI_BLANKS option	
ASA SNMP Extension Agent OID	36
ANSI_CLOSE_CURSORS_ON_ROLLBACK option	
ASA SNMP Extension Agent OID	36
ANSI_INTEGER_OVERFLOW option	
ASA SNMP Extension Agent OID	36
ANSI_PERMISSIONS option	
ASA SNMP Extension Agent OID	36
ANSI_UPDATE_CONSTRAINTS option	
ASA SNMP Extension Agent OID	36
ANSINULL option	
ASA SNMP Extension Agent OID	36
asaDbOptMetaDataTable	
Adaptive Server Anywhere MIB	27
asaDbPropMetaDataTable	
Adaptive Server Anywhere MIB	26
asaDbStatMetaDataTable	
Adaptive Server Anywhere MIB	26
asasnmp.ini file	
required for ASA SNMP Extension Agent	12
asaSrvPropMetaDataTable	
Adaptive Server Anywhere MIB	25
asaSrvStatMetaDataTable	
Adaptive Server Anywhere MIB	24
AUDITING option	
ASA SNMP Extension Agent OID	36
AUDITING_OPTIONS option	
ASA SNMP Extension Agent OID	36
AuditingTypes property	
ASA SNMP Extension Agent OID	34
AUTOMATIC_TIMESTAMP option	
ASA SNMP Extension Agent OID	36
AvailIO property	
ASA SNMP Extension Agent OID	27
B	
BACKGROUND_PRIORITY option	
ASA SNMP Extension Agent OID	36
BlankPadding property	
ASA SNMP Extension Agent OID	34
BlobArenas property	
ASA SNMP Extension Agent OID	34
BLOCKING option	
ASA SNMP Extension Agent OID	36
BLOCKING_TIMEOUT option	
ASA SNMP Extension Agent OID	36

BytesReceived property		ASA SNMP Extension Agent OID	31
ASA SNMP Extension Agent OID	27		
BytesReceivedUncomp property		ASA SNMP Extension Agent OID	31
ASA SNMP Extension Agent OID	27		
BytesSent property		ASA SNMP Extension Agent OID	31
ASA SNMP Extension Agent OID	27		
BytesSentUncomp property		ASA SNMP Extension Agent OID	31
ASA SNMP Extension Agent OID	27		
C			
C2 property		ASA SNMP Extension Agent OID	31
ASA SNMP Extension Agent OID	29		
CacheHits property		ASA SNMP Extension Agent OID	31
ASA SNMP Extension Agent OID	31		
CacheHitsEng property		ASA SNMP Extension Agent OID	31
ASA SNMP Extension Agent OID	27		
CachePinned property		ASA SNMP Extension Agent OID	31
ASA SNMP Extension Agent OID	27		
CacheRead property		ASA SNMP Extension Agent OID	31
ASA SNMP Extension Agent OID	31		
CacheReadEng property		ASA SNMP Extension Agent OID	31
ASA SNMP Extension Agent OID	27		
CacheReadIndInt property		ASA SNMP Extension Agent OID	31
ASA SNMP Extension Agent OID	31		
CacheReadIndLeaf property		ASA SNMP Extension Agent OID	31
ASA SNMP Extension Agent OID	31		
CacheReadTable property		ASA SNMP Extension Agent OID	31
ASA SNMP Extension Agent OID	31		
CacheReplacements property		ASA SNMP Extension Agent OID	31
ASA SNMP Extension Agent OID	27		
Capabilities property		ASA SNMP Extension Agent OID	34
ASA SNMP Extension Agent OID	34		
CaseSensitive property		ASA SNMP Extension Agent OID	34
ASA SNMP Extension Agent OID	34		
CaseSensitivePasswords property		ASA SNMP Extension Agent OID	34
ASA SNMP Extension Agent OID	34		
CHAINED option		ASA SNMP Extension Agent OID	36
ASA SNMP Extension Agent OID	36		
CharSet property		ASA SNMP Extension Agent OID	29, 34
ASA SNMP Extension Agent OID	29, 34		
CHECKPOINT_TIME option		ASA SNMP Extension Agent OID	36
ASA SNMP Extension Agent OID	36		
CheckpointLogBitmapPagesWritten property		ASA SNMP Extension Agent OID	31
ASA SNMP Extension Agent OID	31		
CheckpointLogBitmapSize property		ASA SNMP Extension Agent OID	31
ASA SNMP Extension Agent OID	31		
CheckpointLogCommitToDisk property		ASA SNMP Extension Agent OID	31
ASA SNMP Extension Agent OID	31		
CheckpointLogPageInUse property		ASA SNMP Extension Agent OID	31
ASA SNMP Extension Agent OID	31		
CheckpointLogPagesRelocated property		ASA SNMP Extension Agent OID	31
ASA SNMP Extension Agent OID	31		
CheckpointLogPagesWritten property		ASA SNMP Extension Agent OID	31
ASA SNMP Extension Agent OID	31		
CheckpointLogSavePreimage property		ASA SNMP Extension Agent OID	31
ASA SNMP Extension Agent OID	31		
CheckpointLogSize property		ASA SNMP Extension Agent OID	31
ASA SNMP Extension Agent OID	31		
CheckpointLogWrites property		ASA SNMP Extension Agent OID	31
ASA SNMP Extension Agent OID	31		
CheckpointUrgency property		ASA SNMP Extension Agent OID	31
ASA SNMP Extension Agent OID	31		
Checksum property		ASA SNMP Extension Agent OID	34
ASA SNMP Extension Agent OID	34		
Chkpt property		ASA SNMP Extension Agent OID	31
ASA SNMP Extension Agent OID	31		
ChkptFlush property		ASA SNMP Extension Agent OID	31
ASA SNMP Extension Agent OID	31		
ChkptPage property		ASA SNMP Extension Agent OID	31
ASA SNMP Extension Agent OID	31		
CIS_OPTION option		ASA SNMP Extension Agent OID	36
ASA SNMP Extension Agent OID	36		
CIS_ROWSET_SIZE option		ASA SNMP Extension Agent OID	36
ASA SNMP Extension Agent OID	36		
CLOSE_ON_ENDTRANS option		ASA SNMP Extension Agent OID	36
ASA SNMP Extension Agent OID	36		
ClusteredIndexes property		ASA SNMP Extension Agent OID	34
ASA SNMP Extension Agent OID	34		
Collation property		ASA SNMP Extension Agent OID	34
ASA SNMP Extension Agent OID	34		
CommandLine property		ASA SNMP Extension Agent OID	29
ASA SNMP Extension Agent OID	29		
CommitFile property		ASA SNMP Extension Agent OID	31
ASA SNMP Extension Agent OID	31		
CompactPlatformVer property		ASA SNMP Extension Agent OID	29
ASA SNMP Extension Agent OID	29		
CompanyName property		ASA SNMP Extension Agent OID	29
ASA SNMP Extension Agent OID	29		
CompressedBTrees property		ASA SNMP Extension Agent OID	34
ASA SNMP Extension Agent OID	34		
Compression property		ASA SNMP Extension Agent OID	34
ASA SNMP Extension Agent OID	34		
ConnCount property		ASA SNMP Extension Agent OID	31
ASA SNMP Extension Agent OID	31		

CONNECTION_AUTHENTICATION option		DATE_ORDER option	
ASA SNMP Extension Agent OID	36	ASA SNMP Extension Agent OID	36
ConnsDisabled property		DBFileFragments property	
ASA SNMP Extension Agent OID	29	ASA SNMP Extension Agent OID	34
ConsoleLogFile property		DEBUG_MESSAGES option	
ASA SNMP Extension Agent OID	29	ASA SNMP Extension Agent OID	36
CONTINUE_AFTER_RAISERROR option		DEDICATED_TASK option	
ASA SNMP Extension Agent OID	36	ASA SNMP Extension Agent OID	36
conventions		DEFAULT_TIMESTAMP_INCREMENT option	
documentation	viii	ASA SNMP Extension Agent OID	36
CONVERSION_ERROR option		DefaultCollation property	
ASA SNMP Extension Agent OID	36	ASA SNMP Extension Agent OID	29
COOPERATIVE_COMMIT_TIMEOUT option		DELAYED_COMMIT_TIMEOUT option	
ASA SNMP Extension Agent OID	36	ASA SNMP Extension Agent OID	36
COOPERATIVE_COMMITS option		DELAYED_COMMITS option	
ASA SNMP Extension Agent OID	36	ASA SNMP Extension Agent OID	36
CurrentCacheSize property		DiskRead property	
ASA SNMP Extension Agent OID	27	ASA SNMP Extension Agent OID	31
CurrentRedoPos property		DiskReadEng property	
ASA SNMP Extension Agent OID	34	ASA SNMP Extension Agent OID	27
CurrIO property		DiskReadIndInt property	
ASA SNMP Extension Agent OID	31	ASA SNMP Extension Agent OID	31
CurrRead property		DiskReadIndLeaf property	
ASA SNMP Extension Agent OID	31	ASA SNMP Extension Agent OID	31
CurrWrite property		DiskReadTable property	
ASA SNMP Extension Agent OID	31	ASA SNMP Extension Agent OID	31
D		DiskWrite property	
database options		ASA SNMP Extension Agent OID	31
OIDs for ASA SNMP Extension Agent	36	DIVIDE_BY_ZERO_ERROR option	
retrieving with the ASA SNMP Extension Agent		ASA SNMP Extension Agent OID	36
15		documentation	
setting with the ASA SNMP Extension Agent	17	conventions	viii
database properties		SQL Anywhere Studio	vi
OIDs for ASA SNMP Extension Agent	33	DriveType property	
retrieving with the ASA SNMP Extension Agent		ASA SNMP Extension Agent OID	34
15		dynamic traps	
setting with the ASA SNMP Extension Agent	17	about	19
database statistics		E	
Adaptive Server Anywhere MIB	31	Encryption property	
OIDs for ASA SNMP Extension Agent	31	ASA SNMP Extension Agent OID	34
retrieving with the ASA SNMP Extension Agent		ESCAPE_CHARACTER option	
15		ASA SNMP Extension Agent OID	36
DATABASE_AUTHENTICATION option		EXCLUDE_OPERATORS option	
ASA SNMP Extension Agent OID	36	ASA SNMP Extension Agent OID	36
DATE_FORMAT option		ExtendDB property	
ASA SNMP Extension Agent OID	36	ASA SNMP Extension Agent OID	31

EXTENDED_JOIN_SYNTAX option
 ASA SNMP Extension Agent OID 36

ExtendTempWrite property
 ASA SNMP Extension Agent OID 31

F

feedback
 documentation xii
 providing xii

File property
 ASA SNMP Extension Agent OID 34

FileSize property
 ASA SNMP Extension Agent OID 34

FileVersion property
 ASA SNMP Extension Agent OID 34

FipsMode property
 ASA SNMP Extension Agent OID 29

FIRE_TRIGGERS option
 ASA SNMP Extension Agent OID 36

FIRST_DAY_OF_WEEK option
 ASA SNMP Extension Agent OID 36

FLOAT_AS_DOUBLE option
 ASA SNMP Extension Agent OID 36

FOR_XML_NULL_TREATMENT option
 ASA SNMP Extension Agent OID 36

FORCE_VIEW_CREATION option
 ASA SNMP Extension Agent OID 36

FreeBuffers property
 ASA SNMP Extension Agent OID 27

FreePageBitmaps property
 ASA SNMP Extension Agent OID 34

FreePages property
 ASA SNMP Extension Agent OID 34

FullCompare property
 ASA SNMP Extension Agent OID 31

functions
 executing using ASA SNMP Extension Agent 17

G

GetData property
 ASA SNMP Extension Agent OID 31

GLOBAL_DATABASE_ID option
 ASA SNMP Extension Agent OID 36

GlobalDBId property
 ASA SNMP Extension Agent OID 34

H

HistogramHashFix property
 ASA SNMP Extension Agent OID 34

Histograms property
 ASA SNMP Extension Agent OID 34

HttpPorts property
 ASA SNMP Extension Agent OID 29

HttpsPorts property
 ASA SNMP Extension Agent OID 29

I

iAnywhere.mib file
 about 7
 location 24

icons
 used in manuals x

IdleCheck property
 ASA SNMP Extension Agent OID 31

IdleChkpt property
 ASA SNMP Extension Agent OID 31

IdleTimeout property
 ASA SNMP Extension Agent OID 29

IdleWrite property
 ASA SNMP Extension Agent OID 31

IndAdd property
 ASA SNMP Extension Agent OID 31

IndexStatistics property
 ASA SNMP Extension Agent OID 34

IndLookup property
 ASA SNMP Extension Agent OID 31

INTEGRATED_SERVER_NAME option
 ASA SNMP Extension Agent OID 36

IOTorecover property
 ASA SNMP Extension Agent OID 31

IQStore property
 ASA SNMP Extension Agent OID 34

IsFipsAvailable property
 ASA SNMP Extension Agent OID 29

IsIQ property
 ASA SNMP Extension Agent OID 29

IsJavaAvailable property
 ASA SNMP Extension Agent OID 29

IsNetworkServer property
 ASA SNMP Extension Agent OID 29

ISOLATION_LEVEL option
 ASA SNMP Extension Agent OID 36

IsRuntimeServer property			
ASA SNMP Extension Agent OID	29		
J			
JAVA_HEAP_SIZE option			
ASA SNMP Extension Agent OID	36		
JAVA_INPUT_OUTPUT option			
ASA SNMP Extension Agent OID	36		
JAVA_NAMESPACE_SIZE option			
ASA SNMP Extension Agent OID	36		
JAVA_PAGE_BUFFER_SIZE option			
ASA SNMP Extension Agent OID	36		
JavaGlobFix property			
ASA SNMP Extension Agent OID	27		
JavaHeapSize property			
ASA SNMP Extension Agent OID	31		
JavaNSSize property			
ASA SNMP Extension Agent OID	31		
JavaObjectsEnabled property			
ASA SNMP Extension Agent OID	29		
JDKVersion property			
ASA SNMP Extension Agent OID	34		
L			
Language property			
ASA SNMP Extension Agent OID	29, 34		
LargeProcedureIDs property			
ASA SNMP Extension Agent OID	34		
LegalCopyright property			
ASA SNMP Extension Agent OID	29		
LegalTrademarks property			
ASA SNMP Extension Agent OID	29		
LicenseCount property			
ASA SNMP Extension Agent OID	29		
LicensedCompany property			
ASA SNMP Extension Agent OID	29		
LicensedUser property			
ASA SNMP Extension Agent OID	29		
LicensesInUse property			
ASA SNMP Extension Agent OID	27		
LicenseType property			
ASA SNMP Extension Agent OID	29		
LivenessTimeout property			
ASA SNMP Extension Agent OID	29		
LOCK_REJECTED_ROWS option			
ASA SNMP Extension Agent OID	36		
LockedHeapPages property			
ASA SNMP Extension Agent OID	27		
LockTablePages property			
ASA SNMP Extension Agent OID	31		
LOG_DEADLOCKS option			
ASA SNMP Extension Agent OID	36		
LOG_DETAILED_PLANS option			
ASA SNMP Extension Agent OID	36		
LOG_MAX_REQUESTS option			
ASA SNMP Extension Agent OID	36		
LogFileFragments property			
ASA SNMP Extension Agent OID	34		
LogFreeCommit property			
ASA SNMP Extension Agent OID	31		
LOGIN_MODE option			
ASA SNMP Extension Agent OID	36		
LOGIN_PROCEDURE option			
ASA SNMP Extension Agent OID	36		
LogMirrorName property			
ASA SNMP Extension Agent OID	34		
LogName property			
ASA SNMP Extension Agent OID	34		
LogWrite property			
ASA SNMP Extension Agent OID	31		
LTMGeneration property			
ASA SNMP Extension Agent OID	34		
LTMTrunc property			
ASA SNMP Extension Agent OID	34		
M			
MachineName property			
ASA SNMP Extension Agent OID	29		
MainHeapBytes property			
ASA SNMP Extension Agent OID	27		
MainHeapPages property			
ASA SNMP Extension Agent OID	27		
management information bases			
about	6		
managers			
about	6		
MapPages property			
ASA SNMP Extension Agent OID	31		
MapPhysicalMemoryEng property			
ASA SNMP Extension Agent OID	27		
MAX_CURSOR_COUNT option			
ASA SNMP Extension Agent OID	36		
MAX_HASH_SIZE option			
ASA SNMP Extension Agent OID	36		

MAX_PLANS_CACHED option		
ASA SNMP Extension Agent OID	36	
MAX_RECURSIVE_ITERATIONS option		
ASA SNMP Extension Agent OID	36	
MAX_STATEMENT_COUNT option		
ASA SNMP Extension Agent OID	36	
MAX_WORK_TABLE_HASH_SIZE option		
ASA SNMP Extension Agent OID	36	
MaxCacheSize property		
ASA SNMP Extension Agent OID	27	
MaxIO property		
ASA SNMP Extension Agent OID	31	
MaxMessage property		
ASA SNMP Extension Agent OID	29	
MaxRead property		
ASA SNMP Extension Agent OID	31	
MaxWrite property		
ASA SNMP Extension Agent OID	31	
MessageWindowSize property		
ASA SNMP Extension Agent OID	29	
metadata tables		
Adaptive Server Anywhere MIB	24	
MIBs <i>see also</i> management information bases		
defined	6	
supported by ASA SNMP Extension Agent	6	
MIN_PASSWORD_LENGTH option		
ASA SNMP Extension Agent OID	36	
MinCacheSize property		
ASA SNMP Extension Agent OID	27	
MultiByteCharSet property		
ASA SNMP Extension Agent OID	34	
MultiPacketsReceived property		
ASA SNMP Extension Agent OID	27	
MultiPacketsSent property		
ASA SNMP Extension Agent OID	27	
N		
Name property		
ASA SNMP Extension Agent OID	29, 34	
NamedConstraints property		
ASA SNMP Extension Agent OID	34	
NativeProcessorArchitecture property		
ASA SNMP Extension Agent OID	29	
NEAREST_CENTURY option		
ASA SNMP Extension Agent OID	36	
newsgroups		
technical support	xii	
NON_KEYWORDS option		
ASA SNMP Extension Agent OID	36	
NumProcessorsAvail property		
ASA SNMP Extension Agent OID	29	
NumProcessorsMax property		
ASA SNMP Extension Agent OID	29	
O		
object identifiers		<i>see</i> OIDs
ODBC_DESCRIBE_BINARY_AS_VARBINARY option		
ASA SNMP Extension Agent OID	36	
ODBC_DISTINGUISH_CHAR_AND_VARCHAR option		
ASA SNMP Extension Agent OID	36	
OIDs <i>see also</i> object identifiers		
about	6	
Adaptive Server Anywhere MIB	23	
database options	36	
database properties	33	
database statistics	31	
defined	6	
RDBMS MIB	42	
server properties	29	
server statistics	27	
OmniIdentifier property		
ASA SNMP Extension Agent OID	29	
ON_CHARSET_CONVERSION_FAILURE option		
ASA SNMP Extension Agent OID	36	
ON_TSQL_ERROR option		
ASA SNMP Extension Agent OID	36	
OPTIMISTIC_WAIT_FOR_COMMIT option		
ASA SNMP Extension Agent OID	36	
OPTIMIZATION_GOAL option		
ASA SNMP Extension Agent OID	36	
OPTIMIZATION_LEVEL option		
ASA SNMP Extension Agent OID	36	
OPTIMIZATION_LOGGING option		
ASA SNMP Extension Agent OID	36	
OPTIMIZATION_WORKLOAD option		
ASA SNMP Extension Agent OID	36	
options		
database options in Adaptive Server Anywhere		
MIB		36
P		
PacketsReceived property		

ASA SNMP Extension Agent OID	27	ASA SNMP Extension Agent OID	29
PacketsReceivedUncomp property		ProfileFilterUser property	
ASA SNMP Extension Agent OID	27	ASA SNMP Extension Agent OID	29
PacketsSent property		properties	
ASA SNMP Extension Agent OID	27	database properties in Adaptive Server Anywhere	
PacketsSentUncomp property		MIB	33
ASA SNMP Extension Agent OID	27	server property OIDs in Adaptive Server	
PageRelocations property		Anywhere MIB	29
ASA SNMP Extension Agent OID	31		
PageSize property		Q	
ASA SNMP Extension Agent OID	29, 34	QUERY_PLAN_ON_OPEN option	
PeakCacheSize property		ASA SNMP Extension Agent OID	36
ASA SNMP Extension Agent OID	27	QueryCachePages property	
PINNED_CURSOR_PERCENT_OF_CACHE		ASA SNMP Extension Agent OID	31
option		QueryLowMemoryStrategy property	
ASA SNMP Extension Agent OID	36	ASA SNMP Extension Agent OID	31
Platform property		QueryRowsMaterialized property	
ASA SNMP Extension Agent OID	29	ASA SNMP Extension Agent OID	31
PlatformVer property		QuittingTime property	
ASA SNMP Extension Agent OID	29	ASA SNMP Extension Agent OID	29
PRECISION option		QUOTED_IDENTIFIER option	
ASA SNMP Extension Agent OID	36	ASA SNMP Extension Agent OID	36
PREFETCH option			
ASA SNMP Extension Agent OID	36	R	
PRESERVE_SOURCE_FORMAT option		RDBMS MIB	
ASA SNMP Extension Agent OID	36	about	9
PreserveSource property		list of tables	42
ASA SNMP Extension Agent OID	34	rdbmsDbInfoTable	
PREVENT_ARTICLE_PKEY_UPDATE option		description	42
ASA SNMP Extension Agent OID	36	rdbmsDbLimitedResourceTable	
ProcedurePages property		description	44
ASA SNMP Extension Agent OID	31	rdbmsDbParamTable	
ProcedureProfiling property		description	43
ASA SNMP Extension Agent OID	34	rdbmsDbTable	
ProcessCPU property		description	42
ASA SNMP Extension Agent OID	29	RDBMS-MIB.mib file	
ProcessCPUSystem property		about	9
ASA SNMP Extension Agent OID	29	location	42
ProcessCPUUser property		rdbmsSrvInfoTable	
ASA SNMP Extension Agent OID	29	description	45
ProcessorArchitecture property		rdbmsSrvLimitedResourceTable	
ASA SNMP Extension Agent OID	29	description	47
ProductName property		rdbmsSrvParamTable	
ASA SNMP Extension Agent OID	29	description	46
ProductVersion property		rdbmsSrvTable	
ASA SNMP Extension Agent OID	29	description	45
ProfileFilterConn property		READ_PAST_DELETED option	

ASA SNMP Extension Agent OID 36

ReadOnly property

ASA SNMP Extension Agent OID 34

RECOVERY_TIME option

ASA SNMP Extension Agent OID 36

RecoveryUrgency property

ASA SNMP Extension Agent OID 31

RelocatableHeapPages property

ASA SNMP Extension Agent OID 31

RememberLastStatement property

ASA SNMP Extension Agent OID 29

REMOTE_IDLE_TIMEOUT option

ASA SNMP Extension Agent OID 36

RemoteputWait property

ASA SNMP Extension Agent OID 27

RemoteTrunc property

ASA SNMP Extension Agent OID 34

REPLICATE_ALL option

ASA SNMP Extension Agent OID 36

Req property

ASA SNMP Extension Agent OID 27

RequestFilterConn property

ASA SNMP Extension Agent OID 29

RequestFilterDB property

ASA SNMP Extension Agent OID 29

RequestLogFile property

ASA SNMP Extension Agent OID 29

RequestLogging property

ASA SNMP Extension Agent OID 29

RequestLogMaxSize property

ASA SNMP Extension Agent OID 29

RequestLogNumFiles property

ASA SNMP Extension Agent OID 29

RETURN_DATE_TIME_AS_STRING option

ASA SNMP Extension Agent OID 36

RETURN_JAVA_AS_STRING option

ASA SNMP Extension Agent OID 36

RI_TRIGGER_TIME option

ASA SNMP Extension Agent OID 36

ROLLBACK_ON_DEADLOCK option

ASA SNMP Extension Agent OID 36

RollbackLogPages property

ASA SNMP Extension Agent OID 31

ROW_COUNTS option

ASA SNMP Extension Agent OID 36

S

SCALE option

ASA SNMP Extension Agent OID 36

SendFail property

ASA SNMP Extension Agent OID 27

SeparateCheckpointLog property

ASA SNMP Extension Agent OID 34

SeparateForeignKeys property

ASA SNMP Extension Agent OID 34

server properties

OIDs for ASA SNMP Extension Agent 29

retrieving with the ASA SNMP Extension Agent 15

setting with the ASA SNMP Extension Agent 17

server statistics

OIDs for ASA SNMP Extension Agent 27

retrieving with the ASA SNMP Extension Agent 15

simple network management protocol *see* SNMP

SNMP

about 6

agents 6

dynamic traps 19

installing 10

managers 6

traps 6

using the ASA SNMP Extension Agent 3

using traps 18

SNMP service

restarting 11

SORT_COLLATION option

ASA SNMP Extension Agent OID 36

SQL Anywhere Studio

documentation vi

SQL_FLAGGER_ERROR_LEVEL option

ASA SNMP Extension Agent OID 36

SQL_FLAGGER_WARNING_LEVEL option

ASA SNMP Extension Agent OID 36

StartTime property

ASA SNMP Extension Agent OID 29

statistics

database statistics in Adaptive Server Anywhere

MIB 31

server statistics OIDs for ASA SNMP Extension Agent 27

stored procedures

executing using ASA SNMP Extension Agent 17

STRING_RTRUNCATION option		ASA SNMP Extension Agent OID	29
ASA SNMP Extension Agent OID	36	TotalBuffers property	
StringHistogramsFix property		ASA SNMP Extension Agent OID	27
ASA SNMP Extension Agent OID	34	TransactionsSpanLogs property	
SUBSUME_ROW_LOCKS option		ASA SNMP Extension Agent OID	34
ASA SNMP Extension Agent OID	36	traps	
support		about	6, 18
newsgroups	xii	dynamic traps	19
supported platforms		using with ASA SNMP Extension Agent	18
ASA SNMP Extension Agent	4	TriggerPages property	
SUPPRESS_TDS_DEBUGGING option		ASA SNMP Extension Agent OID	31
ASA SNMP Extension Agent OID	36	TRUNCATE_DATE_VALUES option	
SyncTrunc property		ASA SNMP Extension Agent OID	36
ASA SNMP Extension Agent OID	34	TRUNCATE_TIMESTAMP_VALUES option	
		ASA SNMP Extension Agent OID	36
		TRUNCATE_WITH_AUTO_COMMIT option	
		ASA SNMP Extension Agent OID	36
		TSQL_HEX_CONSTANT option	
		ASA SNMP Extension Agent OID	36
		TSQL_VARIABLES option	
		ASA SNMP Extension Agent OID	36
T		U	
TableBitMaps property		UniqueIdentifier property	
ASA SNMP Extension Agent OID	34	ASA SNMP Extension Agent OID	34
TablesQualTriggers property		UnschReq property	
ASA SNMP Extension Agent OID	34	ASA SNMP Extension Agent OID	27
TDS_EMPTY_STRING_IS_NULL option		UPDATE_STATISTICS option	
ASA SNMP Extension Agent OID	36	ASA SNMP Extension Agent OID	36
technical support		UPGRADE_DATABASE_CAPABILITY option	
newsgroups	xii	ASA SNMP Extension Agent OID	36
TEMP_SPACE_LIMIT_CHECK option		USER_ESTIMATES option	
ASA SNMP Extension Agent OID	36	ASA SNMP Extension Agent OID	36
TempDir property			
ASA SNMP Extension Agent OID	29	V	
TempFileName property		VariableHashSize property	
ASA SNMP Extension Agent OID	34	ASA SNMP Extension Agent OID	34
TempTablePages property		ViewPages property	
ASA SNMP Extension Agent OID	31	ASA SNMP Extension Agent OID	31
THREAD_COUNT option			
ASA SNMP Extension Agent OID	36	W	
THREAD_STACK option		WAIT_FOR_COMMIT option	
ASA SNMP Extension Agent OID	36	ASA SNMP Extension Agent OID	36
THREAD_SWAPS option		Windows 2000	
ASA SNMP Extension Agent OID	36	installing SNMP	10
Threads property		Windows 2003	
ASA SNMP Extension Agent OID	29		
TIME_FORMAT option			
ASA SNMP Extension Agent OID	36		
TIME_ZONE_ADJUSTMENT option			
ASA SNMP Extension Agent OID	36		
TIMESTAMP_FORMAT option			
ASA SNMP Extension Agent OID	36		
TimeZoneAdjustment property			

installing SNMP	10
Windows XP	
installing SNMP	10

Free Manuals Download Website

<http://myh66.com>

<http://usermanuals.us>

<http://www.somanuals.com>

<http://www.4manuals.cc>

<http://www.manual-lib.com>

<http://www.404manual.com>

<http://www.luxmanual.com>

<http://aubethermostatmanual.com>

Golf course search by state

<http://golfingnear.com>

Email search by domain

<http://emailbydomain.com>

Auto manuals search

<http://auto.somanuals.com>

TV manuals search

<http://tv.somanuals.com>