

# **SYLVANIA**

User Manual - SMPK4099



## **What's in the box?**

Operating Unit

User Manual

USB Cable

Earphone

CD Driver

# **Content**

## **Buttons location and usages**

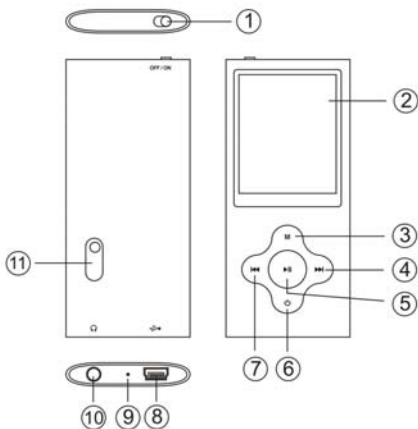
### **Basic Operation**

Intro .....	3 - 7
Operation of Music Mode .....	8 - 12
Operation of Video Mode .....	13
Operation of Pictures Mode.....	14
Operation of FM radio.....	15 - 16
Operation of Camera.....	17
Operation of Video Recorder.....	18
Operation of Others.....	19 - 22

### **Technical Specification**

### **Trouble Shooting**

## Buttons location and usages



- (1) Power Button
- (2) Display Screen
- (3) M Button
- (4) Next Button
- (5) Play/ Pause Button
- (6) On/ Off Button
- (7) Previous Button
- (8) USB Port
- (9) Microphone
- (10) Earphone Jack
- (11) Camera Lens

## Software Utilities Installation

Insert the CD into the CD ROM Drive of your PC. Click Setup.exe to start driver installation. Follow the on-screen-menu to complete the installation.



Click Close once you reach the Installation Complete Screen.



For Window 98/98SE users, please install the driver in the CD-ROM before downloading any files to your player

## Connect & Charge



Your player will be charged while being connected to PC through the USB cable. ! You will see the charging animation in the bottom right hand corner of the display. The player is fully charged when the charging animation stops. (Switch on the player when charging)

## Transfer

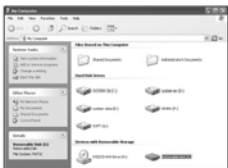


Step 1:  
Set the Online Device of the player as USB Disk (Refer to Page 6), then connect it to your PC by USB cable. Once the connection is successfully made, the above screen display would be shown. Try re-connecting the player if the above screen doesn't appear.



## Step 2:

The above screen would appear. (Apply only to Window XP) Choose Take no action and click OK to close the window.



Double click My Computer on your desktop and the above window would appear. Look for the Removable Disk Icon.



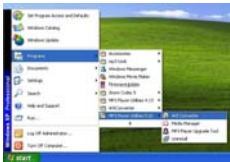
Double click the Removable Disk icon. Note: Do not disconnect the USB cable once you click into the removable disk window. Such action may cause data loss or problems to the player.

Drag and drop your media files into the removable disk. You can create any folder or directory in the removable disk. Close the removable disk window and disconnect the player from your PC after the data transfer.

# Software Operation

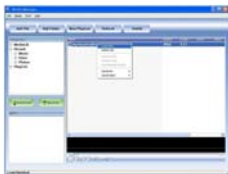
## *Video Converter*

You can convert your favourite video file in any other format into the .AVI format with the help of the AVI converter. The converting progress is shown.



## **Media Manager**

You can enjoy songs from both PC and your player thru the Media manager.





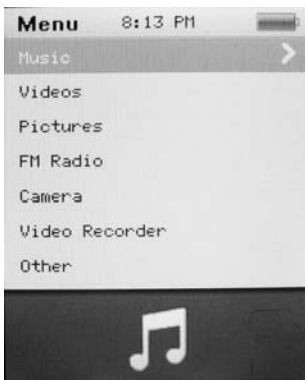
## Basic Operation

### Power on/off and Lock

Switch on the **Power button** on the top and hold **ON/OFF button** to switch on the device.

### Main interface

Once you switch the player on you'll reach to the main interface as below..



## Operation of Music Mode

Press **Previous/ Next** button to select “Music” and press **Play/ Pause** button to enter the page. Once you’ve entered the music mode, the following screen would show up.



### Now Playing

Press **Previous/ Next** button to select **Now Playing** and press **Play/ Pause** button to resume playing the current song.

### All Music

Press **Previous/ Next** button to choose **All Music** and press **Play/ Pause** button to show your library of music. Press **Previous/ Next** button to select

any particular song and press **Play/ Pause** to start playing.

### Artist

Press **Previous/ Next** button to select **Artist** to show all of your artists. Press **Previous/ Next** to choose any particular artist to show the songs of that artist. Select song and press **Play/ Pause** to start playing.

### Album

Press **Previous/ Next** button to select **Album** to browse all of your albums. Press **Previous/ Next** to choose any particular album to browse the songs of that album. Press **Play/ Pause** button after selected any song to start playing.

## Genre

Press **Previous/ Next** button to select **Genre** to browse all genre of your songs. Press **Play/Pause** button to enter the genre that you've chosen and press **Play/ Pause** button to start playing the selected song.

## My Music List

Press **Previous/ Next** to select **My Music List** to browse all songs that you've added to be your playlist. Press **Previous/ Next** button to select desire song list and press **Play/ Pause** button to start playing the selected song.

## Record List

Press **Previous/ Next** button to select **Record List** to choose from FM Record or Voice. Press **Play/ Pause** button to start playing the selected file  
**Press M** to jump back to the main menu.

## Music Player interface

Whenever you start playing a song you'll reach the Music Player Interface as below.



### Play Music

Press the **Play/ Pause** button in the middle to start playing, and press again to pause.

### Volume

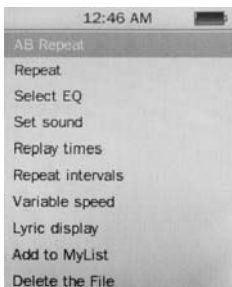
Hold **Play/ Pause** button until the volume bar appear at the button. Press **Previous/ Next** button to adjust the volume.

## Previous / Next

Press **Next** to jump to the next song, and press **Previous** to jump back to the previous song. Hold **Previous/ Next** button to go fast forward or backward

## Play Option

Hold **M** button to enter the Play Option Menu. You can set your preference in **AB Repeat/ Repeat/ Select EQ/ Set Sound/ Replay times/ Repeat intervals/ Variable speed/ Lyric display/ Add to my list/ Delete the file**



## AB Repeat

While playing music, hold **M** to enter the sub-menu. Press **Previous/ Next** to select A-B repeat and press **Play/ Pause** to confirm. Press **Play/ Pause** button to set the starting point of the **A-B Repeat**, then press **Play/ Pause** again to set the ending point. To cancel A-B repeat mode, press **Play/ Pause** again.

## Repeat Mode

Press **Previous/ Next** to choose **Repeat Mode** and press **Play/ Pause** to choose from **Sequence/ Repeat One/ Repeat All/ Shuffle/ Shuffle + Repeat**. Once you've selected, press **Play/ Pause** to confirm and press **M** to return to sub-menu.

## Select EQ

Press **Previous/ Next** to choose **Select EQ** and press **Play/ Pause** button enter the sub-menu and choose different EQ from **Normal / Rock / Pop / Classic / Soft/ Jazz / DBB**. Once you've selected your choice, press **Play/ Pause** to confirm and press **M** to return to sub-menu.

## Set Sound

Press **Previous/ Next** to select **Set Sound**, press **Play/ Pause** to enter **User EQ**. Hold **M** to jump to different bar and press **Previous/ Next** button to adjust your own EQ Setting. Once you've selected, press **Play/ Pause** to confirm and press **M** to return to sub-menu.

## Replay Times

Press **Previous/ Next** to select **Repeat Mode** and press **Play/ Pause** to choose from **1 times to infinity**.

## Repeat Intervals

Press **Previous/ Next** to select **Repeat Intervals** to choose from **1 Sec to 7 Sec**. Once you've selected your choice, press **Play/ Pause** to confirm and return to sub-menu.

## Variable speed

Press **Previous/ Next** to select **Variable speed** to choose from **- 4 to 4**. Once you've selected your choice, press **Play/ Pause** to confirm and return to sub-menu.

## Lyric Display

Press **Previous/ Next** to select Lyric display and press **Play/ Pause** to enter the page. Choose **enable / off** and press **Play/ Pause** to display lyrics.

\*The player only supports **.LRC** lyric.

## Add to MyList

Press **Previous/ Next** to select **add to my list** and press **Play/ Pause** to choose from **My Playlist 1 to My Playlist 5**. Once you've selected your choice, press **Play/ Pause** to confirm and and press **M** to return to sub-menu.

## Delete the File

Press **Previous/ Next** to select **delete file** and press **Play/ Pause** to enter the page. Once you've selected your choice, press **Play/ Pause** to confirm and and return to sub-menu.

Press **M** to return to Music mode.

## Operation of Video Mode

Press **Previous/ Next** button to select “Movie” and press **Play/ Pause** button to enter video mode. Once you’ve entered the video mode, the following screen would show up.



Press **Previous/ Next** button to select your desire movie and press **Play/ Pause** button to start playing.

For video recording file, it will be saved inside the CAMERA folder.

## Basic Video Control

Press **Previous** button to choose previous movie, hold **Previous** to rewind. Press **Next** button to choose next movie, hold **Next** to fast-forward. Hold **Play/ Pause** button until volume bar appear at the bottom, press **Previous/ Next** button to adjust the volume.

## Operation of Pictures Mode

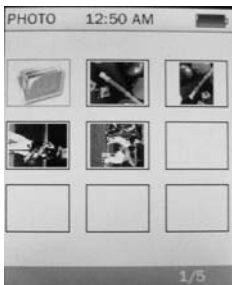
Press **Previous/ Next** button to select "Pictures" on the main menu and press **Play/ Pause** to enter the photo mode. Once you've entered the photo mode.

### Photo Browsing

Press **Previous/ Next** to select Dir List and browse all photos. Press **Previous/ Next** to select a particular photo, and press **Play/ Pause** to open it.

### Menu Style

Press **Previous/ Next** to choose "play mode" and press **Play/ Pause** to choose List mode and Thumbnail.





## Operation of Radio Mode

Press **Previous/ Next** to select "Radio" on the main menu and press **Play/ Pause** to enter the radio menu

### Radio Sub-menu

Hold **M** to enter the sub-menu and press **Previous/ Next** to choose from **FM record/ Record quality/ Record Gain/ Save Channel/ Auto search/ Station List/ FM Band**.

FM record: Press **Previous/ Next** to choose FM record and press **Play/ Pause** to confirm. Once you selected the option, the player will start recording the radio. Press **Play/ Pause** again to pause the recording and hold **M** to save the file.

Record quality: Press **Play/ Pause** to enter this option and choose from **High/ Medium/ Low**.

Record Gain: Press **Play/ Pause** to choose from 1-7 and press **Play/ Pause** again to confirm.

Save Channel: Press **Previous/ Next** to choose save channel and press **Play/ Pause** to confirm. Select a channel from CH01-CH30 and press **Play/ Pause** to save the current channel.

Auto Search: Press **Previous/ Next** to choose auto search and press **Play/ Pause** to confirm. Press **Play/ Pause** button to start searching the channel and preset channel automatically.

Station List: Press **Previous/ Next** to choose station list and press **Play/ Pause** to confirm. Press **Play/ Pause** button to browse all preset channel.

FM Band: Press **Previous/ Next** to choose FM band and press **Play/ Pause** to enter sub-menu. Choose from USA/Japan and press **Play/ Pause** to confirm and return to sub-menu.

## Operation of Camera Mode

Press **Previous/ Next** to select “Camera” and press **Play/ Pause** button to enter the camera mode.

## Basic Camera Control

Photo Shooting: Press **Play/ Pause** button to take photo.  
Zoom in/ out: Press **Previous** to zoom out and press **Next** to zoom in.

## Camera Sub-menu

Hold **M** for 2 second to enter the camera sub-menu

Save Path: Internal memory

Resolution: Press **Play/ Pause** to choose from 320 x 240/  
640 x 480/ 1280 x 960/ 1600 x 1200/ 2048 x 1536

Self-timer: Press **Play/ Pause** to choose from off/ 5 Sec/  
10Sec/ 15 Sec/ 20 Sec

Shutter sound: Press **Play/ Pause** to choose from Off/  
sound 1/ sound 2/ sound 3

Date stamp: Press **Play/ Pause** to choose from Off/ Date/  
Date and Time.

Press **M** to return to Camera mode.

## Operation of Video Recorder Mode

Press **Previous/ Next** to select “Video Recorder” and press **Play/ Pause** button to enter the recording mode.

## Basic Video recorder Control

Press **Play/ Pause** button to record video and press **Play/ Pause** again to pause the video recording. Press **M** during the recording to save the file.

## Video Recorder Sub-menu

Hold **M** for 2 second to enter the sub-menu

Save Path: Internal memory

Resolution: 320 x 240

Record Quality: Press **Play/ Pause** to choose from **High / Medium/ Low/ Auto-adapted**.

Press **M** to return to Video recorder mode.

## Operation of Others

Press **Previous/ Next** button to choose “Other” on the main menu to enter the page.

## Operation of Record Mode

Press **Previous/ Next** button to select “Recordings” and press **Play/ Pause** to enter the record mode. Once you’ve entered the record mode, the following screen would show up.



### Basic record control

Press **Play/ Pause** to start recording and press **Play/ Pause** again to pause recording, Press **M** to save or cancel the recorded file.

### Sub-menu of record

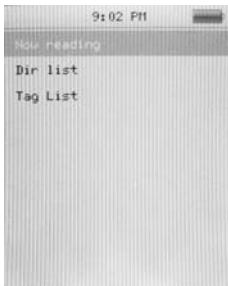
Hold **M** to enter the submenu and choose from Record format/ Record quality/ Record gain.

## Operation of E-book

Press **Previous/ Pause** to choose “E-book” and press **Play/ Pause** to enter the e-book menu. Once you’ve entered the e-book menu, the following screen would show up.

## Basic e-book control

Press **Play/ Pause** to enter the Dir List, and press **Previous/ Next** to select .TXT file. When opened an e-book file, press **Previous** to go back to previous page, and press **Next** to skip to the next page. Hold M to enter the E-book sub-menu.



## Tag List:

Press **Previous/ Next** to Select "Tag List" and press **Play/ Pause** to browse the list.

## E-book Sub-menu

Skip to: Press **Previous/ Next** to adjust the percentage jumping between pages.

Auto Play Gap: Press **Previous/ Pause** to choose from 3 Sec/ 6 Sec/ 9 Sec/ 12 Sec/ 15 Sec.

Add Bookmark: Press **Play/ Pause** to confirm bookmark/Tag

Delete the file: Press **Previous/ Next** to choose OK and press **Play/ Pause** to confirm delete file.

## Operation of Calculator

Press **Previous/ Next** to select the digit and function, press **Play/ Pause** to confirm the selection. Press **M** to return to previous menu.

## Operation of Setting Mode

Press **Previous/ Next** to select Set up and press **Play/ Pause** to enter the Set up menu.

### Date and Time

**Adjust Date:** Press **Play/ Pause** button to enter adjust date, hold **M** to jump to day, month and year and press **Previous/ Next** to set the date. Once you've set the date, press **Play/ Pause** to confirm and return to previous menu.

**Adjust Time:** Press **Play/ Pause** button to enter adjust time, hold **M** to select hour and minutes and press **Previous/ Next** to adjust the time.

### Display Setting

Press **Play/ Pause** to set backlight time from off/ 5 Sec/ 10 Sec/ 20 Sec/ 30 Sec/ 1 Minute/ 5 Minutes

## **Power Saving**

**Idle Time:** Press **Previous/ Next** to choose from Off/ 10 Sec/ 30 Sec/ 1 Minute/ 3 Minutes/ 5 Minutes/ 10 Minutes and press **Play/ Pause** to confirm setting.

**Sleep Time:** Press **Previous/ Next** to choose from Off/ 10 Minutes/ 30 Minutes/ 1 Hour/ 2 Hours/ 3 Hours/ 4 Hours/ 5 Hours and press **Play/ Pause** to confirm setting.

## **Language**

Press **Previous/ Next** to choose your desired language and press **Play/ Pause** to confirm.

## **Advance Info**

Press **Previous/ Next** to choose from Player Information/ Format Memory/ Reset.



## Technical Specification

Flash Memory	128MB – 16GB
MP3 compressed rate supported	MP3(8 – 320 kbps) WMA(5-384kbps) OGG/ ACC/APE/WAV
Video format supported	FLV/ AVI
Photo format supported	JPEG/BMP/GIF
Digital camera	0.3 mega pixel
Battery	3.7V Lithium rechargeable battery
Interface	USB2.0 high speed
Display	2" Color TFT display
Weight	40g
Dimensions	41(W) * 8(D) * 94(H) mm

## Trouble Shooting

*What should I do if there's no sound when playing?*

You should check the volume first. If the volume has been turned up, maybe the memory format of the device is incorrect..



Specifications are subject to change without notice.  
No part of this document may be reproduced or transmitted  
in any form or by any mean, electronics or mechanical  
including photocopying and recording  
or translated to another language for any purpose  
without the prior written consent of the manufacturer.  
All brand names, logos and registered trademarks mentioned  
are property of their respective owners.  
2009 © Sysbay International Technology. All right reserved.

## Free Manuals Download Website

<http://myh66.com>

<http://usermanuals.us>

<http://www.somanuals.com>

<http://www.4manuals.cc>

<http://www.manual-lib.com>

<http://www.404manual.com>

<http://www.luxmanual.com>

<http://aubethermostatmanual.com>

Golf course search by state

<http://golfingnear.com>

Email search by domain

<http://emailbydomain.com>

Auto manuals search

<http://auto.somanuals.com>

TV manuals search

<http://tv.somanuals.com>