

***SYLVANIA***

OPERATING INSTRUCTIONS

**SCD 152**  
**45 SECONDS ANTI-SHOCK**  
**PORTABLE CD PLAYER**

WARNING: TO REDUCE RISK OF FIRE OR ELECTRIC SHOCK, DO NOT EXPOSE THIS APPLIANCE TO RAIN OR MOISTURE.

# SYLVANIA

## OPERATING INSTRUCTIONS

**SCD 152**  
45 SECONDS ANTI-SHOCK  
PORTABLE CD PLAYER

## CAUTION

Use of controls or adjustments or performance of procedures other than those specified herein may result in hazardous radiation exposure.

This compact disc player is classified as a CLASS 1 LASER product.



Invisible laser radiation when open and interlocks defeated. Avoid exposure to beam.

## PRECAUTIONS

To maintain good performance Do not use the unit in places which are extremely hot, cold, dusty or humid. In particular, do not use or keep the unit in following places.

- in a high humidity area such as a bathroom
- near a heater
- in an area exposed to direct sunlight (e.g., inside a parked car, where it can become extremely hot)
- near sources of strong magnetism, such as televisions, speakers, or magnets
- where there is a lot of movement or vibration, such as on a car dashboard or an unstable shelf

For safety

- Do not attempt to disassemble this unit. Laser rays from the optical pickup are dangerous to the eyes
- Make sure that pins or other foreign objects do not get inside the player
- Take care not to drop the unit or subject it to strong shocks
- To keep dust from the pickup lens, keep the disc compartment lid closed after use. Never touch the lens
- If you hear no sound when playing a disc, DO NOT turn the volume up high because the music could suddenly begin at high volume. To avoid hurting your ears or damaging the speakers, turn the volume control to the lowest level before starting playback and slowly turn it up to the desired level

### Note on listening with the headphones

- Listen at moderate volumes to avoid hearing damage
- Do not wear the headphones while driving or cycling. It may create a traffic hazard
- You should use extreme caution or temporarily discontinue use in potentially hazardous situations, such as walking, jogging, etc

## CAUTION

Listening to headphone stereo at full power for extended periods of time can result in hearing damage

Do not touch pickup lens


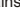

### Note on condensation

If the unit is suddenly moved from a cold place to a warm one, it may cause in condensation on the pickup lens and malfunction or playback difficulties, should this occur, leave the unit for a few hours, then try playback again.

## USING ON DRY CELL BATTERIES **A**

Open the battery compartment and insert two LR6 (size AA) alkaline batteries with the ⊕ and ⊖ marks correctly aligned. Not included.

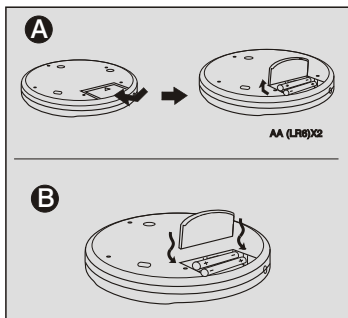
### Battery replacement

The battery indicator in the display  according to the remaining power of the batteries. Replace the batteries when  lights. If the unit remains in use after  lights, the operation will stop.

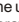

### If the cover of the battery compartment comes off **B**

Note on dry cell batteries

- Do not mix the different types of batteries, or an old battery with a new one
- To prevent the risk of electrolyte leakage or explosions, after recharging or in other condition switch to "off", otherwise the CD player will be damaged
- When not using the batteries, remove them to prevent needless battery wear
- If liquid leaks from the batteries, wipe thoroughly to remove

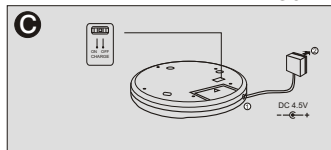


## USING ON RECHARGEABLE BATTERIES **C**

- Be sure to use size AA Ni-Cd 1.2V rechargeable batteries, which are commercially available. Not included.
  - Be sure to read the instructions of the purchased rechargeable batteries before use
  - Before charging the batteries, close the disc compartment, you cannot charge the batteries while it is opened
  - Only for the special rechargeable batteries which expose part on the polarity.
1. Insert the rechargeable batteries with the ⊕ and ⊖ marks correctly aligned.
  2. When recharge please switch the recharge button to "on", after recharging or in other condition switch to "off", otherwise the CD player will be damaged
  3. Connect the AC adaptor. Not included.
    - ① to DC 4.5 V jack
    - ② to a wall outlet
  4. Press **■** STOP to start charging.  
After charging, disconnect the AC adaptor.
- Time to recharge the batteries  
Recharge the batteries when  lights. If the unit remains in use after  lights, the current operation will stop.

### ATTENTION

The rechargeable batteries are recyclable. At the end of their useful life, it may be illegal to dispose the batteries into the municipal waste stream under various state and local laws. Check with your local solid waste officials in your area for details about recycling options or proper disposal.



## BEFORE PLAYBACK

### HOLD switch **D**

Release the HOLD switch to OFF position before playback. When not using the unit, set the HOLD switch to the ON position. Accidentally pressed button will not function. If buttons are pressed when the HOLD switch is set to the ON position, "HOLD" will light on the display.

### Turning on and off **D**

#### Turning the power on

Press **▶||** PLAY/PAUSE. Power is turned on and playback starts.

#### Turning off the power

If no new operations are done within 30 seconds from the end of last operation, the power is turned off automatically. (Auto power off function) you can turn off the power before it is automatically turned off by pressing **■** STOP

### Standby mode **D**

When an operation finishes, the unit goes into standby mode until the auto power off function automatically turns off the power.

To enter standby mode, press **▶||** PLAY/PAUSE to start playback, then press **■** STOP

### Adjusting the sound

#### Volume **E**

Turn the VOLUME control to adjust the volume.

#### X-BASS **E**

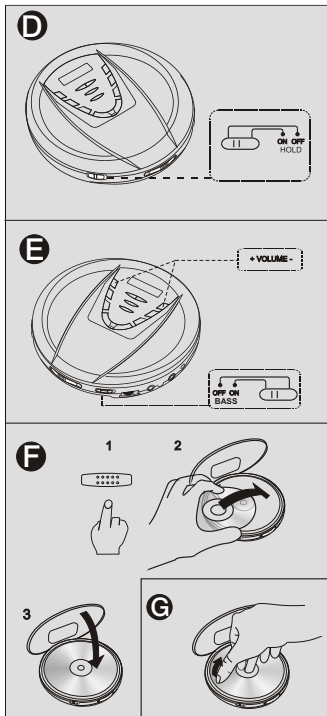
Switch on the X-BASS for extra bass emphasized.

#### Inserting a disc **F**

1. Push the OPEN switch to open the disc compartment
2. Place a disc in the center with the label side facing up.
3. Close the disc compartment.

#### To remove the disc **G**

Pick up the disc, holding its edge, while pressing the pivot gently.



# PLAYBACK

Connect the supplied headphone to the PHONE jack.

1. Release HOLD to OFF position.

2. Place a disc.

3. Press  PLAY/PAUSE

Playback starts from the first track.

## BASIC OPERATION

To stop:

Press  STOP

To pause:



Press  PLAY/PAUSE

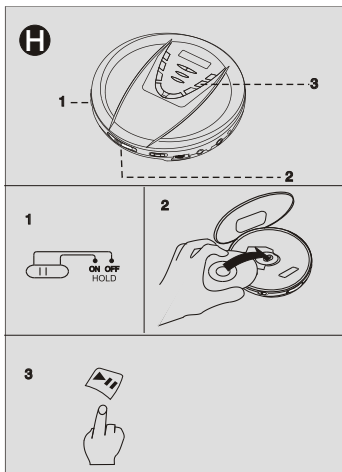
To resume, press it again.

To search for the beginning of a track:

Press  or 

To locate a desired passage:

Keep  or  Pressed.  
Release the button until the start of desired passage.



MODE KEY:





REPEAT ONE: "  "light on display and will repeat the track you selected

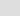
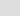
REPEAT ALL: "  ALL" light on display and will repeat entire tracks

INTRO: At stop mode, press until "INTRO" lights on display and will play the first 10 seconds of each track

SHUFF: "SHUFF" light on display Plays every tracks in random order

ANTI SHOCK:  light on display until  Press again then change to normal play  
No Disc: if no disc then "No Disc" is displayed.

## PROGRAM:

- At STOP mode, Press PROGRAM key, Then "PROG 00" start flashing.
- Press skip /searched  or  key to search the track No.
- When desired track is display, press PROGRAM key to register, Then track No. display to "00" again.
- Repeat 2-3 (up to 20 tracks) after register 20 tracks. display shows the first registered track.
- Registered tracks can be check by press PROGRAM key, And it can be changed by repeat 2-3.
- Press play key, then PROG stops flashing and starts playing.
- Open the door or power off to clean programming

## CONNECTION TO AN EXTERNAL UNIT ①

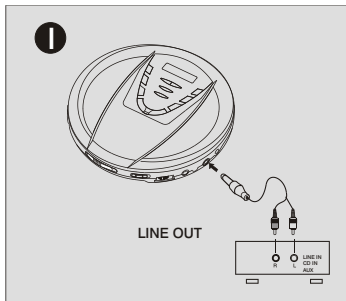
Use a commercially available connection cord which has a 3.5mm stereo plug at one end and two phono plugs at the other end.

Connect the stereo plug to the LINE OUT jack of the unit and connect the phono plugs to the analog input (AUX) terminals of the external unit.

### NOTE

Turn off the power of both units before connection. DO NOT connect to the PHONO(magnetic pickup) inputs of an amplifier.

Volume and bass boost on this unit have no effect on the line output.



## MAINTENANCE

### To clean the lens ①

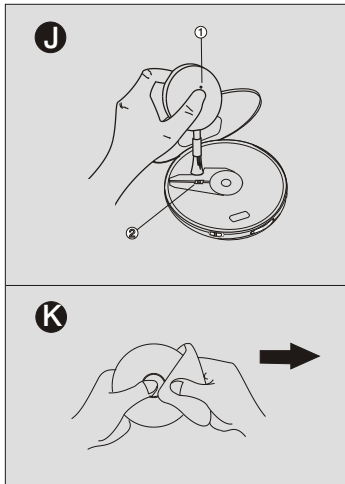
If the lens become dirty, the player will skip or not play. If this occurs, clean the lens in the following manner. To remove dust or dust particles, first use a camera lens blower/brush ① to blow a few times to loosen particles, then gently brush the lens ② clean finish by blowing the lens again.

### Note

Take care not to get too much solution on the swab which could flow into the unit and cause damage. Pressing too strongly with the swab could scratch or break the lens.

### To clean the discs ③

Before playing, wipe the disc from the center out with a cleaning cloth. After playing, store the disc in its case.



---

## SPECIFICATIONS

Tracking system	1-beam laser
Laser pickup	Semiconductor laser
D/A conversion	8-times oversampling digital filter +1- bit DAC
Frequency response	20-20,000 Hz
Outputs	PHONES: stereo jack (3.5mm) [20mW+20mW, 32 ohms at 1 kHz]
Input	DC 4.5V for external power from AC adaptor: Not included.
Power	DC 3V from Alkaline batteries (2 x AA or LR6): Not included. DC 2.4V from the rechargeable batteries: Not included.
Dimensions	∅ 142 x 29(H) mm ( ∅ 5 <sup>9</sup> /16x 1 1/8 inches)
Weight	210 grams (9.8 oz.) without batteries
Supplied accessory	Stereo headphones (1)

The specifications and external appearance of this unit are subjected to change without notice.

***SYLVANIA***

SUBJECT TO MODIFICATION WITHOUT NOTICE!



## Free Manuals Download Website

<http://myh66.com>

<http://usermanuals.us>

<http://www.somanuals.com>

<http://www.4manuals.cc>

<http://www.manual-lib.com>

<http://www.404manual.com>

<http://www.luxmanual.com>

<http://aubethermostatmanual.com>

Golf course search by state

<http://golfingnear.com>

Email search by domain

<http://emailbydomain.com>

Auto manuals search

<http://auto.somanuals.com>

TV manuals search

<http://tv.somanuals.com>