

# ***SYLVANIA***

SMPK4038B

Download from [www.Somanuals.com](http://www.Somanuals.com). All Manuals Search And Download.  
Sylvania is a registered trademark of OSRAM Sylvania Inc. Used under license.

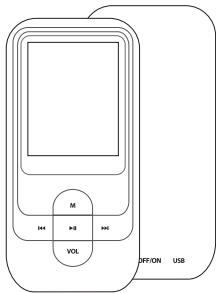


Printed in China

Portable Media Player

# Your Pocket Guide

EN



1

Install Software

2

Get Connected

3

Transfer Media

4

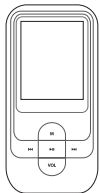
Plug Your Ears & Enjoy

Download from [Www.Somanuals.com](http://www.Somanuals.com). All Manuals Search And Download.

What's in the blister?	2
Know Your Player Well	3
System Requirement	4
Software Installation	5
Connect & Charge	6
Transfer	7 - 8
Software Operation	9 - 12
Language Selection	13
Music Playback	14
Edit Lyrics	15
Repeat Mode	16
EQ Mode	17
Video Playback	18
Photo Browse	19
E-Book	20
Records	21
Game	22
Technical Data	23

What's in the blister?

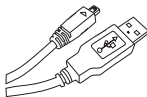
# What's in the blister?



Portable Media Player



Earphone



USB Cable



CD-ROM containing:

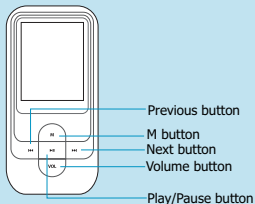
- Media player driver for Windows® 98/98SE
- Software for converting .act files into .wav files.
- Software for formatting internal memory.



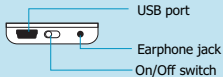
Your Pocket Guide

## Plug Your Ears, and Enjoy

### Front View



### Bottom View



	To	Press
General	Power On/Off	Switch the On/Off switch
	Turn On/Off	Hold >   long
	Scroll through lists	◀◀ ▶▶
	Select Option	M
	Return to previous menu	Hold M long
Music	Play/Pause songs	>
	Jump to next song	▶▶
	Fast Forward	Hold ▶▶ long
	Move back to previous song	◀◀
	Fast Backward	Hold ◀◀ long
	Display lyrics	Hold M long
	Stop lyrics display	M
	Volume up	Press VOL and press ▶▶
Volume down	Press VOL and press ◀◀	
Movie	Play/Pause a movie	>
	Jump to next movie	▶▶
	Fast Forward	Hold ▶▶ long
	Move back to previous movie	◀◀
Images	Fast Backward	Hold ◀◀ long
	Select image	>   ▶▶
	Jump to next image	◀◀
	Jump to previous image	▶▶
	Quit to main menu	Hold M long

# You'll need a computer with:



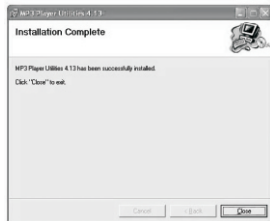
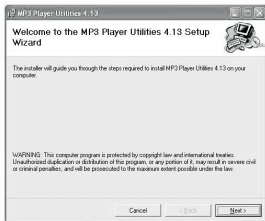
Windows® 98/98SE/ME/2000/XP/Vista  
Pentium Class or faster Processor  
CD-ROM Drive  
64MB RAM  
30MB free hard disk space  
USB Port

# Software Installation

## Software Utilities Installation

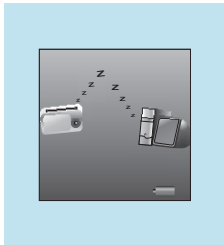
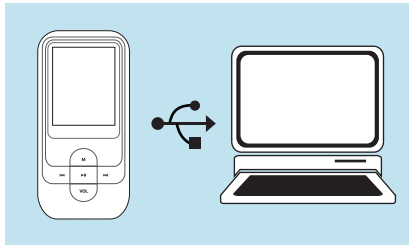
Insert the CD into the CD ROM drive of your PC.  
Click **Setup.exe** to start driver installation.  
Follow the on-screen-menu to complete the installation.

Click **Close** once you reach the **Installation Complete** screen.



For Windows® 98/98SE users, please install the driver in the CD-ROM before downloading any files to your player.  
Download from [www.Somanuals.com](http://www.Somanuals.com). All Manuals Search And Download.

# Connect



Your player will be charged while being connected to PC through the USB cable.

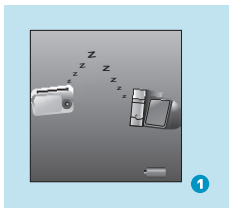
! You will see the charging animation in the bottom right hand corner of the display.

The player is fully charged when the charging animation stops.

Download from [www.Softmanuals.com](http://www.Softmanuals.com). All Manuals Search And Download.

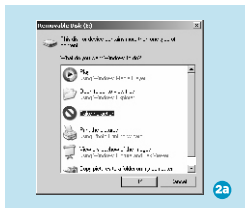


## Get Your Player Connected



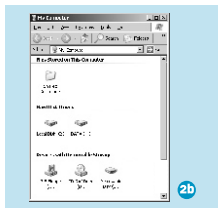
### Step 1:

Set the Online Device of the player as USB Disk (Refer to Page 6), then connect it to your PC by USB cable. Once the connection is successfully made, the above screen display (1) would be shown. Try re-connecting the player if the above screen doesn't appear.

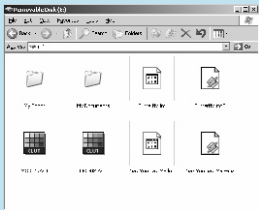


### Step 2:

The above screen (2a) would appear. (Apply only to Windows® XP) Choose **Take no action** and click **OK** to close the window.



Double click **My Computer** on your desktop and the above window (2b) would appear. Look for the **Removable Disk** icon.



### Step 3:

Double click the **Removable Disk** icon.

Note: Do not disconnect the USB cable once you click into the removable disk window. Such action may cause data loss or problems to the player.

Drag and drop your media files into the removable disk.

You can create any folder or directory in the removable disk.

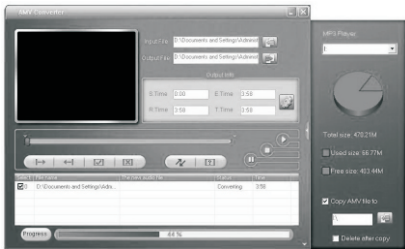
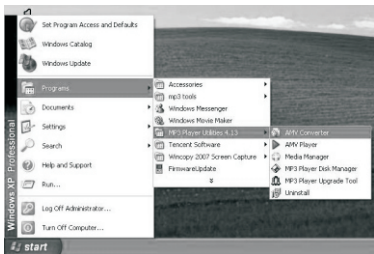
Close the removable disk window and disconnect the player from your PC after the data transfer.

## Transfer Music, Image & Movie

Download from [Www.Somanuals.com](http://www.somanuals.com). All Manuals Search And Download.

## Software Operation

You can convert your favorite video file in any other format into the .AMV format with the help of the **AMV converter** (Programs\MP3 Player Utilities 4.13\AMV Converter). The converting progress is shown as below.



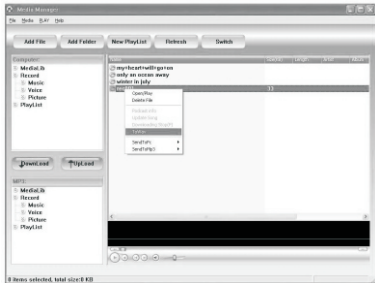
Download from [Www.Somanuals.com](http://www.Somanuals.com). All Manuals Search And Download.



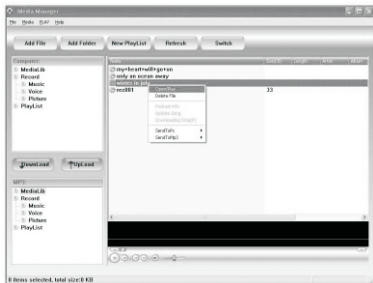
## Enjoy Your AMV Movie

To enjoy the converted movie on your PC, you can play it thru the **AMV player** ( [Programs\MP3 Player Utilities 4.13\AMV Player](#)).

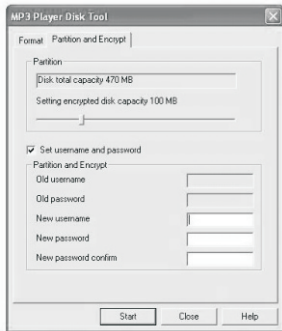
## Software Operation



You can enjoy songs from both PC and your player thru the **Media Manager** (Programs\MP3 Player Utilities 4.13\Media Manager).



You can also convert your recorded .ACT voice into .WAV format thru the **Media Manager**.



You are also allowed to format the memory of your player,  
or divide it into two partitions in [Programs\MP3 Player Utilities 1.12\MP3 Player Disk Manager](#)

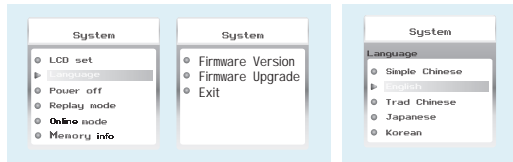
If the updated version is available, please use  
[MP3 Player Firmware Upgrade Tool](#)

Download from [www.Somanuals.com](http://www.Somanuals.com). All Manuals Search And Download.

# Select Your Preferred Language

Step 1:

Press **◀ / ▶** to select **Setup** on the main menu, then press **↵** to enter its sub-menu.



Step 2:

Press **▶** to select **Language**, then press **↵** to confirm.

Step 3:

You can select your preferred language by pressing **◀ / ▶**, and then press **↵** to

confirm your selection. Download from [www.Somanuals.com](http://www.Somanuals.com). All Manuals Search And Download.

## Music Playback



Select **Music** on the main menu and press **M** to enter the music mode, then you can select different songs by pressing **◀▶** / **▶▶**, and you can easily play the song you've chosen by a simple press of **▶▶** .

While enjoying music, you can press **▶▶** to pause or continue the music; press **◀▶** / **▶▶** to move back to the previous song or jump to the next song; Hold **◀▶** / **▶▶** long to move your song forward or rewind it. If you want to adjust the volume, please press **VOL** button and then press **◀▶** or **▶▶** button.



## Display Lyrics

### A-B repeat

While playing music, you can press **M** to enter sub-menu. Press **◀▶** / **▶▶** to select Replay Mode and then press **M** again to select Replay. The mark A is flashing on the display and wait for the setting. Press **◀▶** / **▶▶** to set mark A. Mark A is set if flashing stopped. Press **◀▶** / **▶▶** to set mark B. Mark B is set if flashing stopped. The music between mark A and mark B will be repeated until you press **M** again.

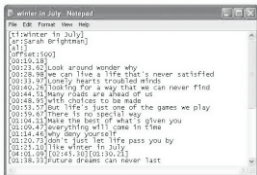
The edited lyrics will be displayed synchronously if you hold **M** while playing music. And you can press **M** once to quit the lyrics display scene.



## Edit Lyrics

You can copy the synchronous lyrics from internet, and create a new **Text Document** on your PC, paste them, and then select to save this document in the extension of **.LRC** shown as below.

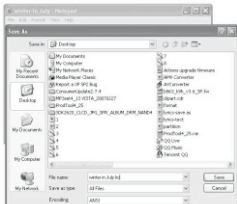
Then put both **.LRC** and **.MP3** (or **.WMA**) files of the same song into the same folder in the removable disk. Your lyrics would be shown when you play that song.



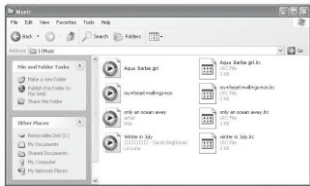
1



2

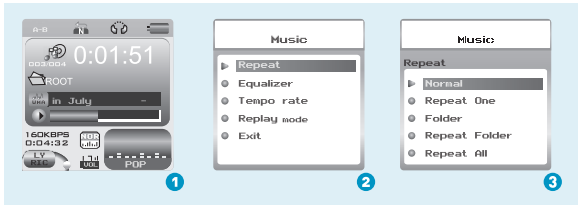


3



4

# Repeat Mode



### Procedure:

In PLAYING mode (1), press **M** while playing music to enter the selection menu screen (2). Choose **Repeat** and press **M** to enter the **Repeat** menu screen (3).

8 Repeat Modes are available:

Normal, Repeat One, Folder, Repeat Folder, Repeat All, Random, Intro, A-B Repeat.

### Normal

All music files will be played one by one and stopped at the last music until you disable this function.

### Repeat One

The currently played song will be played repeatedly until this function is disabled.

### Folder

All music in the selected folder would be played once until this function is disabled.

### Repeat Folder

All music in the selected folder would be played from the beginning to the last one repeatedly until this function is disabled.

### Repeat All

All music would be played from the beginning to the last one repeatedly until this function is disabled.

### Random

All music would be played randomly until this function is disabled.

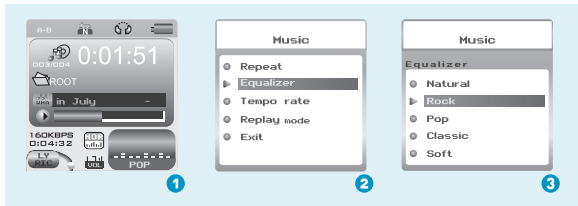
### Intro

All music would be played for 10 seconds from the beginning until this function is disabled.

### A-B Repeat

All music would be played from the desired place to the target place until this function is disabled.

# Listen to your music at its best

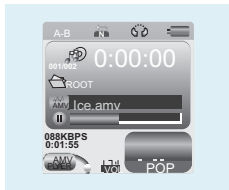
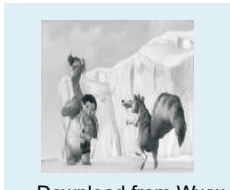


## Procedure:

In PLAYING mode (1), press **M** while playing music to enter the selection menu screen (2). Press **▶** to select **Equalizer** and press **M** to enter the **Equalizer** menu screen (3).

## Video Playback

Select **Video** on the main menu and press ► to enter the video playback mode. You can select different movies by pressing ◀◀ / ▶▶ and press ► to start playing.

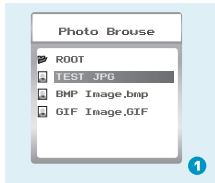


While enjoying video, you can press ► to pause or continue the movie, and press ◀◀ / ▶▶ to move back to the previous movie or jump to the next one. You can move your movie forward or rewind it while playing by holding ◀◀ / ▶▶ long.

If you want to adjust the volume, please press VOL button and then press ◀◀ or ▶▶ button.

Download from [Www.Somanuals.com](http://www.Somanuals.com). All Manuals Search And Download.

# Photo Browse



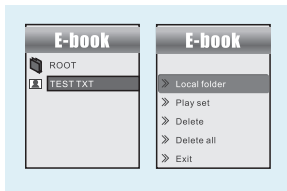
Select **Photo** on the main menu and press **M** to enter the ROOT folder with listed photos under it. You can select different photos by pressing **◀ / ▶**, and press **▶▶** to view. During photo browse, you can switch to the previous or next photo by pressing **◀◀ / ▶▶** too.

## SlideShow

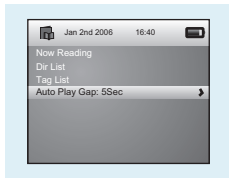
If you want to create a SlideShow for all photos, you can press **M** when you select a photo on the ROOT folder list, then press **▶▶** to select **Play set**, press **M** then **▶▶** to select **Auto play**. Press **M** to get access to the Screen of Auto Play Gap Setting. You can adjust the auto play gap by pressing **◀◀ / ▶▶**. Then press **M** to confirm your setting.



## Ebook



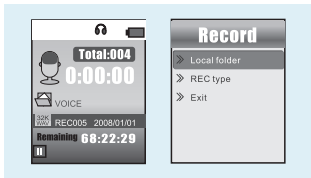
Press **⏪ / ⏩** to select **Ebook** on the main menu, and press **↵** to enter it. Press **⏩** to select desire text file , and press **⏩** to enter it. Press **⏩** again to return to previous page. While reading an article, press to bookmark the text.



## Auto Play Setting

After entering Ebook, press **↵** to select **Play Set**. Press **⏩** to choose **Manual Play or Auto Play**. If you choose **Auto Play**, the article will be scrolled automatically according to the Auto Play Gap you preset. Press **⏪ / ⏩** to select **Auto Play Gap** on the sub-menu of Play Set. .

## Voice Recording

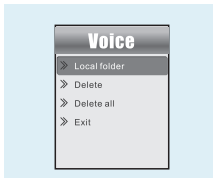


Press **⏪ / ⏩** to select **Record** on the main menu, and press **M** to enter it.

Press **▶▶** to start it and press **M** to save the recorded voice.

To preset the format of the recorded voice file, you could select to go into **Rec Type** on the sub-menu of Recorder. Press **M** to enter sub-menu and press **▶▶** to select **Rec Type**.

## Voice Playback



If you want to play the recorded file, you can press **⏪ / ⏩** to select **Voice** on the main menu, and press **M** to enter it.

Press **M** to select **Local Folder**, and the recorded voice files will be listed after you press **M**.

You can press **⏪ / ⏩** to select one, and press **M** to start playing.

### Game

Press **◀▶** to select **Game** and press **M** to confirm.

### RusBlock

After entering the sub-menu, press **◀▶** to select **RusBlock** and press **M** to confirm.

Press **◀▶** to move the block and press **M** to rotate it. Press **▶▶** to play/ pause the game and hold **M** to return to main menu.

### Puzzle

After entering the sub-menu, press **◀▶** to select **Puzzle** and press **M** to confirm. Press **◀▶** to move to left and right. Press **Vol** to move downward and press **▶▶** to go upward.

### Sudoku

After entering the sub-menu, press **◀▶** to select **Sudoku** and press **M** to confirm.

Press **◀▶** to move left and right and press **Vol** to go upward. Press **▶▶** to choose from 0-9. After filling all the numbers, press **M** to check the final result.



## General Information

Power Supply	140mA, 3.7V Lithium battery
Dimensions	41mm x 85mm x 9mm
Weight	20g
Display	1.5 inch Colour Display
Capacity	128MB/256MB/512MB/1GB/2GB/4GB internal flash memory
Operating System	Windows?98/98SE/Me/2000/XP/Vista MAC OS 9.0, 10.0
Interface	USB 2.0 Full Speed

## Audio Playback

Compression Format	.M P3 (8kbps ~ 320kbps), .WMA (5kbps ~ 384kbps) for music at Constant Bit Rate
S/N ratio	85dB
Earphone Output Power	9mWx, 32ohm

## Voice Recording

Supported File Types	.ACT and .WAV files
----------------------	---------------------

## Video Playback

Supported File Type	.AMV files (Resolution 128 x128)
---------------------	----------------------------------

## Photo Browse

Supported File Type	.JPG, .BMP and .GIF for photo files
---------------------	-------------------------------------

## Viewing Mode

Manual Browse, Slideshow

## Game Function

Game Types	RusBlock, Puzzle, Sudoku & Snake
------------	----------------------------------

# What should I do if...

Q: I cannot enter the MUSIC mode after using the player for a period of time.

A: You should format the memory of the player under connection to PC.

(Be sure you remember to backup the data in your player before performing the above action.)

Q: I cannot convert my video file into the .AMV format.

A: Please make sure that the media player software for video files has been installed on your PC. Then try to convert again.

# Disposal of your old product

Electrical and electronic equipment (EEE) contains materials, parts and substances which can be dangerous to the environment and harmful to human health if wastes of electrical and electronic equipment (WEEE) are not disposed correctly.

Equipments which are marked with the WEEE logo (as shown on the right), should not be thrown away with your household waste. Contact your local Authority Waste Disposal Department as they will be able to provide details of the recycling options available in your area.





## Free Manuals Download Website

<http://myh66.com>

<http://usermanuals.us>

<http://www.somanuals.com>

<http://www.4manuals.cc>

<http://www.manual-lib.com>

<http://www.404manual.com>

<http://www.luxmanual.com>

<http://aubethermostatmanual.com>

Golf course search by state

<http://golfingnear.com>

Email search by domain

<http://emailbydomain.com>

Auto manuals search

<http://auto.somanuals.com>

TV manuals search

<http://tv.somanuals.com>