

# Synology iUSB250

## User's Guide



(Document #: iUSB1.0-050729\_enu)

Based on iUSB1.0 Ver.1.0020

## **Copyright Notice**

All titles, copyrights and other intellectual property rights related to the Software Product (including but not limited to any relevant media, images, photographs, animation, video, audio, music, text, and applets incorporated into the Software Product), accompanying manuals and other documents, and on-line or electronic documents, if any, (collectively “Software Product”) are owned by Synology Inc. Unless otherwise expressly licensed by Synology Inc. in writing, no provision of the Software Product shall represent license to use any of the above rights.

Copyright © 2005 Synology Inc.; All rights reserved.

## **Trademark Notice**

Synology and other names of Synology products are the trademarks or registered trademarks of Synology Inc.

Microsoft, Windows, Windows 98, Windows ME, Windows 2000, and Windows XP are trademarks of Microsoft Corporation.

Mac, Mac OS, and Mac OS X are trademarks of Apple Computer, Inc., registered in the U.S. and other countries.

Other products and company names mentioned herein are trademarks of their respective holders.

## Table of Contents

Copyright Notice.....	2
Trademark Notice .....	2
Table of Contents .....	3
System Requirements.....	4
Before Using Synology iUSB .....	5
LED Indicators.....	5
iUSB Device Setup .....	6
Using Synology iUSB.....	11
A. Backing up Data to the iUSB Device.....	12
a. Immediate Backup .....	12
b. Synchronization .....	13
c. Scheduling Backups.....	14
B. Restoring Data to your Computer .....	17
C. Option .....	18
D. Log .....	19
Troubleshooting .....	20
Appendix - Specifications.....	21

## **System Requirements**

1. Pentium III equivalent processor or higher
2. Windows 98 / ME / 2000 / XP / Windows Server 2003
3. 128 MB RAM or more, as required by operating system
4. Internet connection (for system update)
5. Server Pack 4 for Windows 2000

## **US Patent Pending**

Pub. No.: US 2004/0205778 A1

## Before Using Synology iUSB

1. Please read and follow all warning notices and instructions.
2. Please keep Synology iUSB away from heat, direct sunlight, and water. Do not bend, flex, or drop the device.

## LED Indicators



1. **POWER LED** – Lights up when power is supplied to the system.
2. **ACTIVE LED** – Blinks when the internal hard disk is accessed.
3. **SECURITY LED** – Lights up after the user logs into the system.

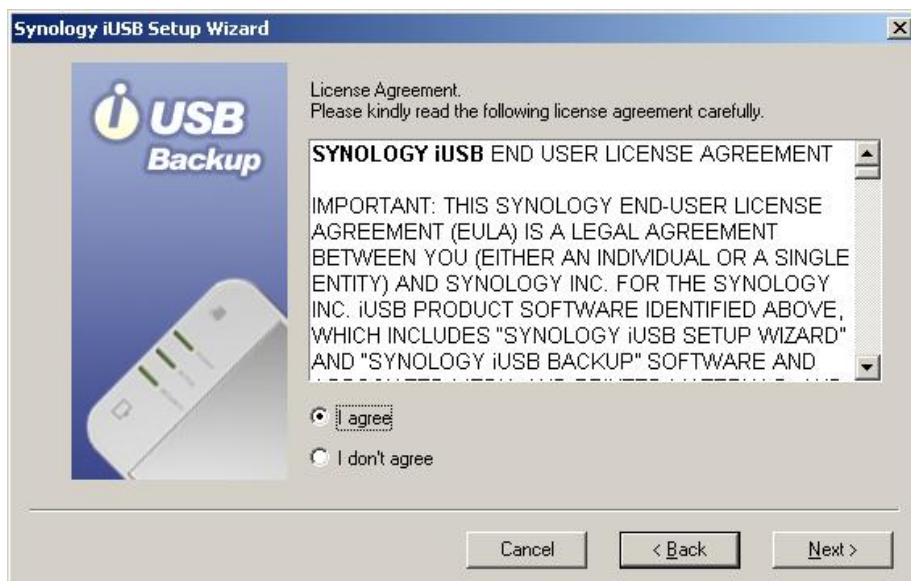
## iUSB Device Setup

**Before connecting the iUSB device, all Windows 2000 users should have Service Pack 4 installed on their system.**

1. Connect the iUSB device to your computer. The automatic setup wizard will pop up after a few seconds.
2. Synology iUSB Setup Wizard will guide you step-by-step through the process for setting up the iUSB device. Click *Next* to continue.



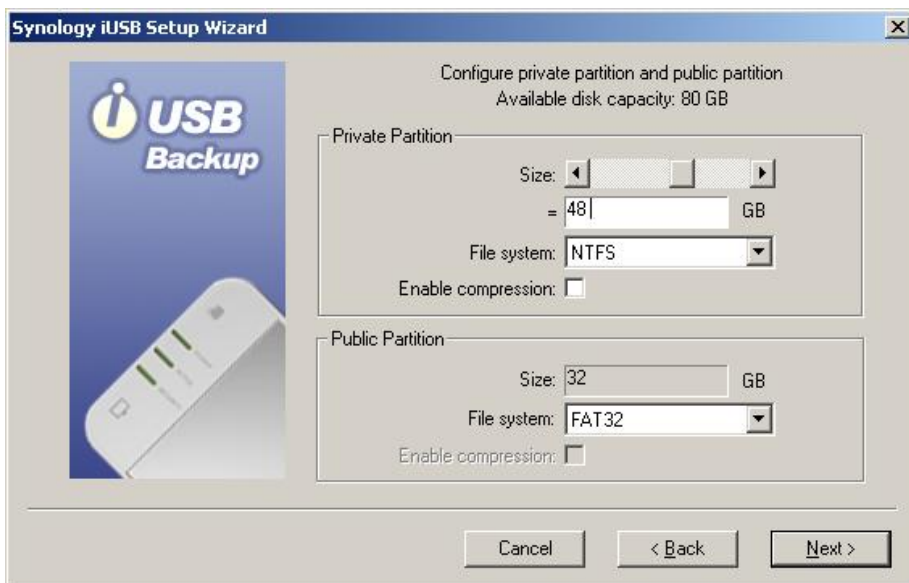
3. If you agree to the terms of the License Agreement, select *I agree*. Click *Next* to continue.



4. The setup wizard will guide you through the following steps. Click *Next* to continue.



5. The iUSB disk can be configured to create two partitions: a public partition and a private partition. Data saved to the private partition will be protected with a user-defined password, while the public partition can work just like a regular USB external disk. You can set the size of the partitions by scrolling the horizontal scroll bar. Click *Next* to continue.

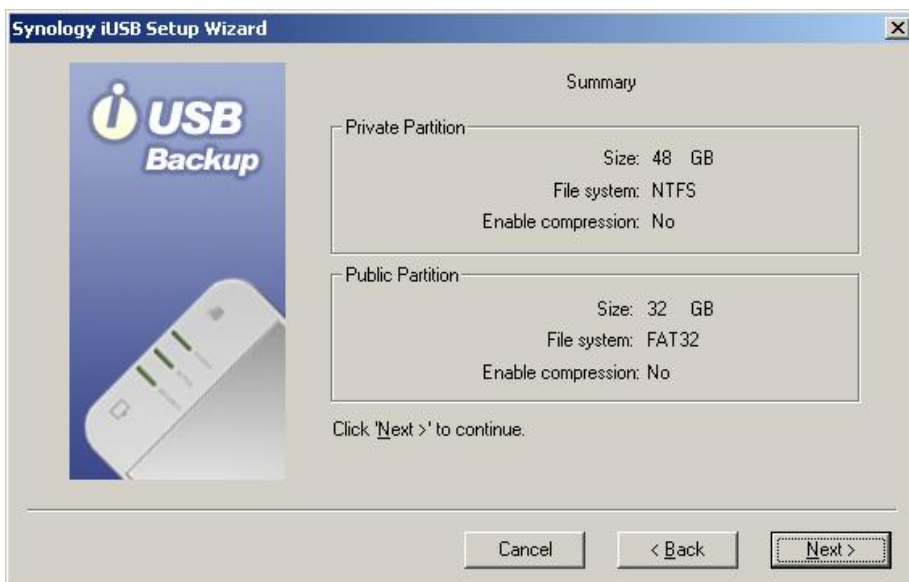


6. The private partition is designed to secure your backup data. Please enter a password, then re-enter the password for confirmation. Click *Next* to continue.



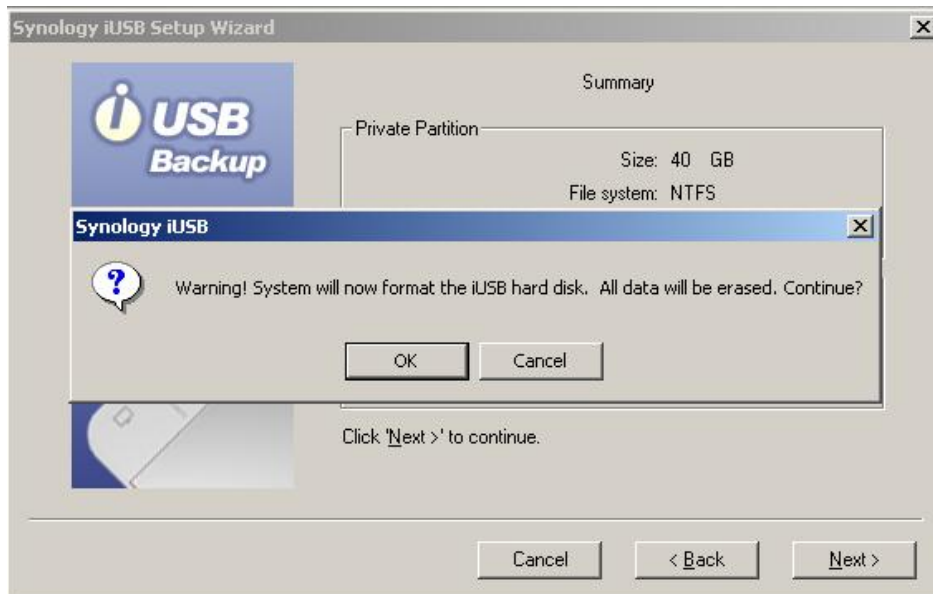
**Warning: If you lose your password, you can only access the iUSB device through Advance->Format on the login window. However, your data will be deleted by formatting the hard disk. Please keep your password in a secure place.**

7. The setup wizard will now display the defined setup summary of the internal disk. Click *Next* if the information is correct.



8. The system will then format the hard disk. Click **OK** to start formatting.





**Warning: All data will be deleted after the hard disk is formatted.**

9. Please wait for the wizard to finish formatting the hard disk.



10. Click **Finish** when setup is complete.

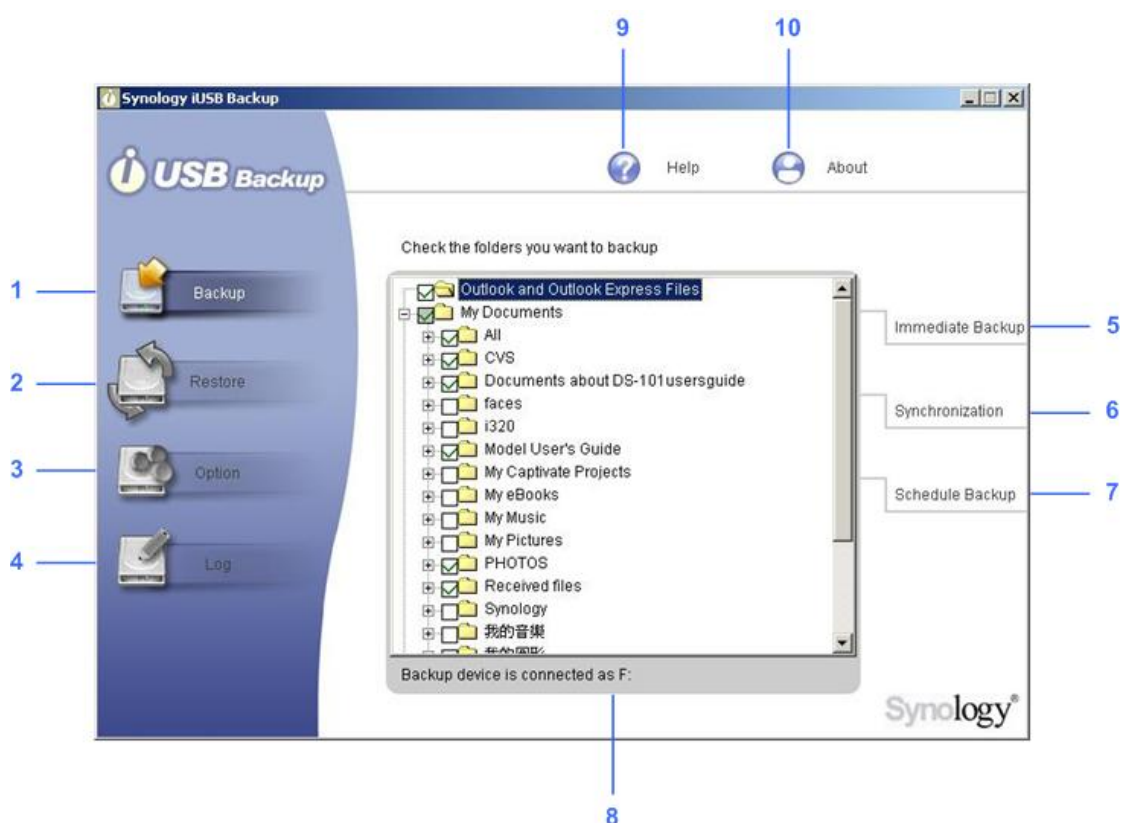


11. Now enter your password and click **Login** to start using the iUSB device. If the Login window does not appear, go to Windows Explorer and run AutoUp.exe in the drive labeled Synology iUSB.



## Using Synology iUSB

After entering Synology iUSB Backup UI, you will see the following window.



1. **Backup:** User can choose to back up selected files/folders
2. **Restore:** Users can restore data from the iUSB device to their PC.
3. **Option:** Users can filter out certain file types.
4. **Log:** All actions done on the iUSB device will be recorded in the log.
5. **Immediate Backup:** Files will be backed up to the iUSB device immediately.
6. **Synchronization:** Files will be backed up to the iUSB device if they are modified.
7. **Schedule Backup:** Files will be backed up to the iUSB device at the specified time.
8. **File/Folder Selection Window:** Users can choose specific folders/files to be backed up to the iUSB device. Folders, “My Documents” and “Desktop”, are selected as default by the system.
9. **Help:** Detailed instructions of how to use iUSB Backup.
10. **About:** The current version and copyright of the iUSB device.

## A. Backing up Data to the iUSB Device

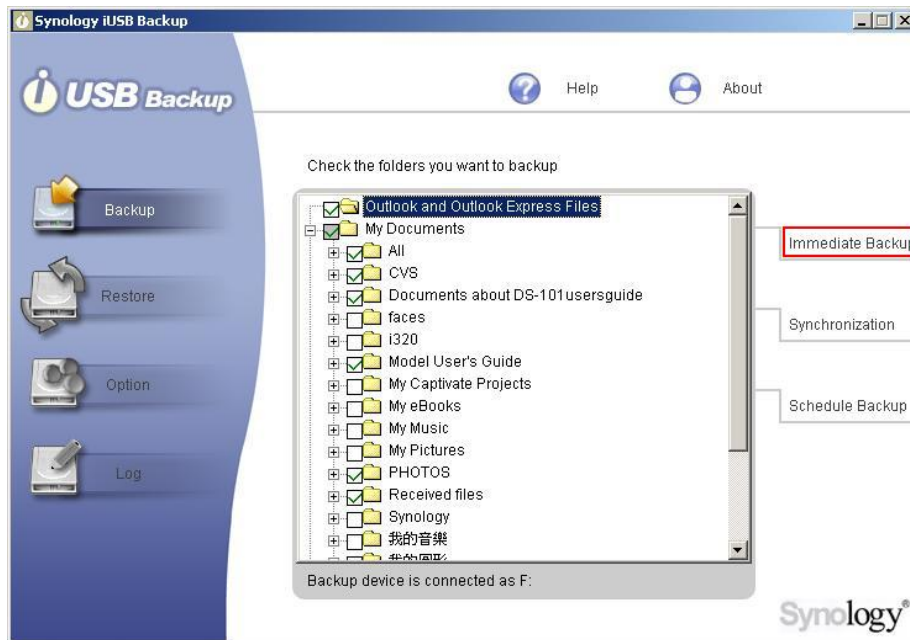
Synology iUSB Backup provides three types of backup as follows:



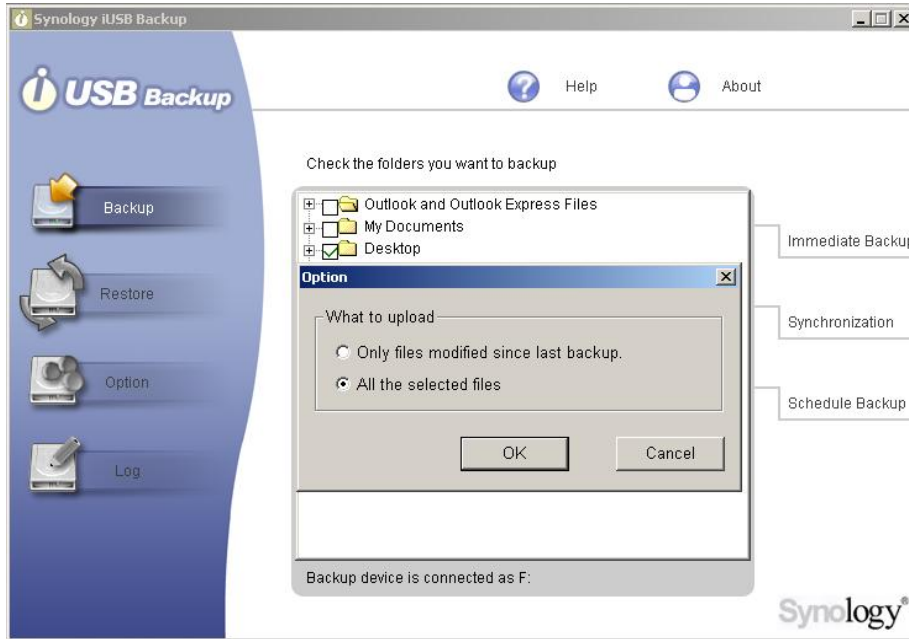
**Note: When using the backup function for the first time, we suggest that you click *Immediate Backup* to back up all files and folders.**

### a. Immediate Backup

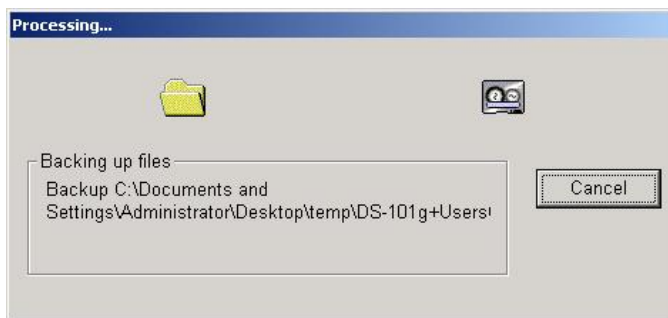
1. To immediately back up the folders/files selected, select the folders/files you want to back up and click ***Immediate Backup*** on the right.



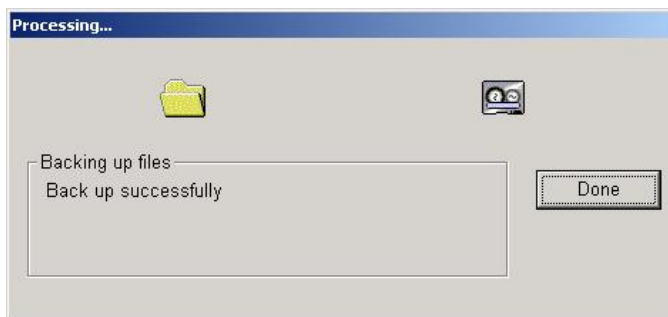
2. Users should choose ***All the selected files***. Click ***OK*** to continue.



3. The system will then start to back up selected file/folders to the iUSB device.

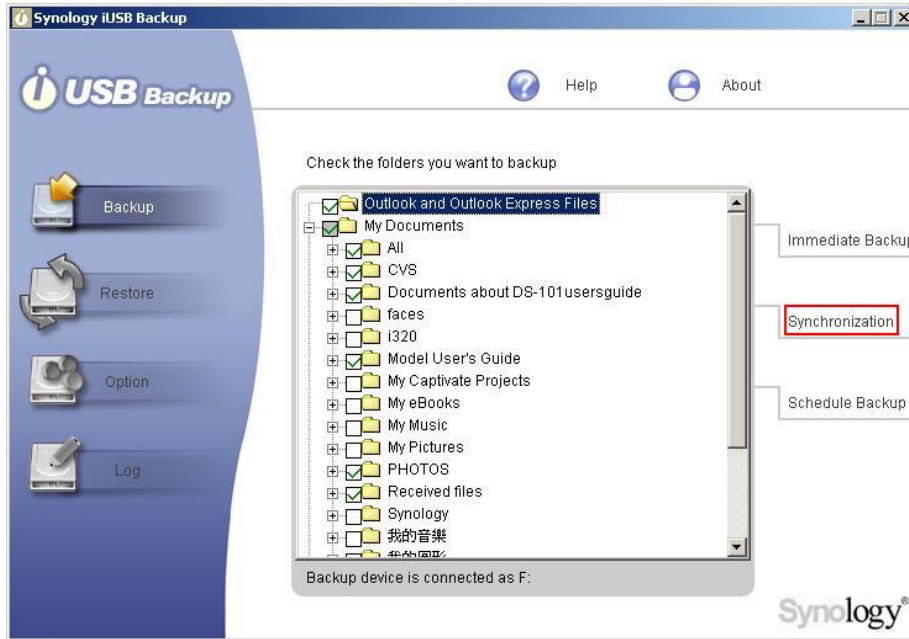


4. The system will display a message indicating successful backup when uploading is finished. Click **Done** to finish.

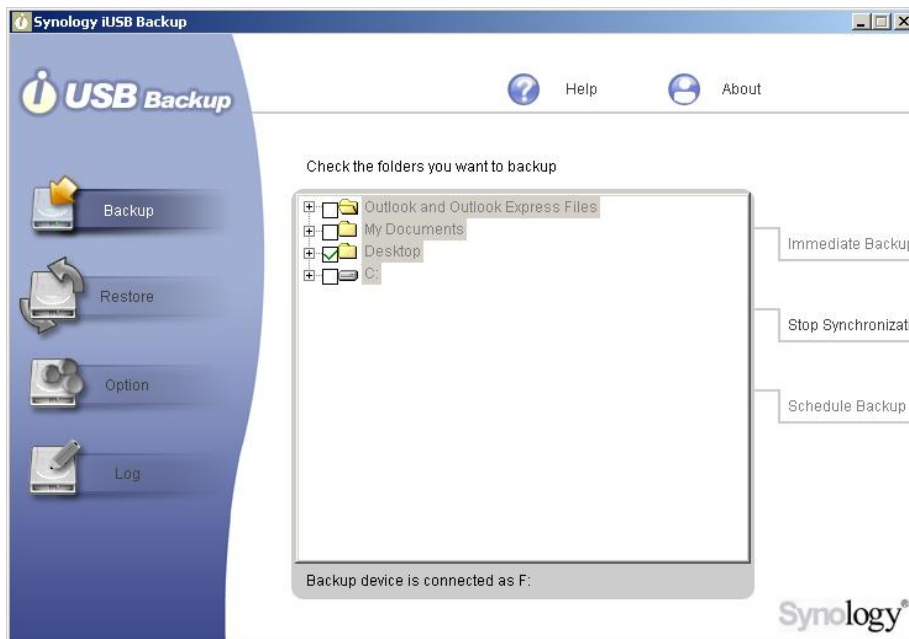


## b. Synchronization

1. Choose **Synchronization** after selecting the folders/files to be backed up, the iUSB Backup program will be minimized to the system tray to perform monitoring. Data in the selected folders/files will be backed up to the iUSB device automatically whenever they are modified.



2. To stop synchronizing, double click on the iUSB icon in the system tray. Click ***Stop Synchronization*** on the right. Users may proceed to other settings according to their needs.



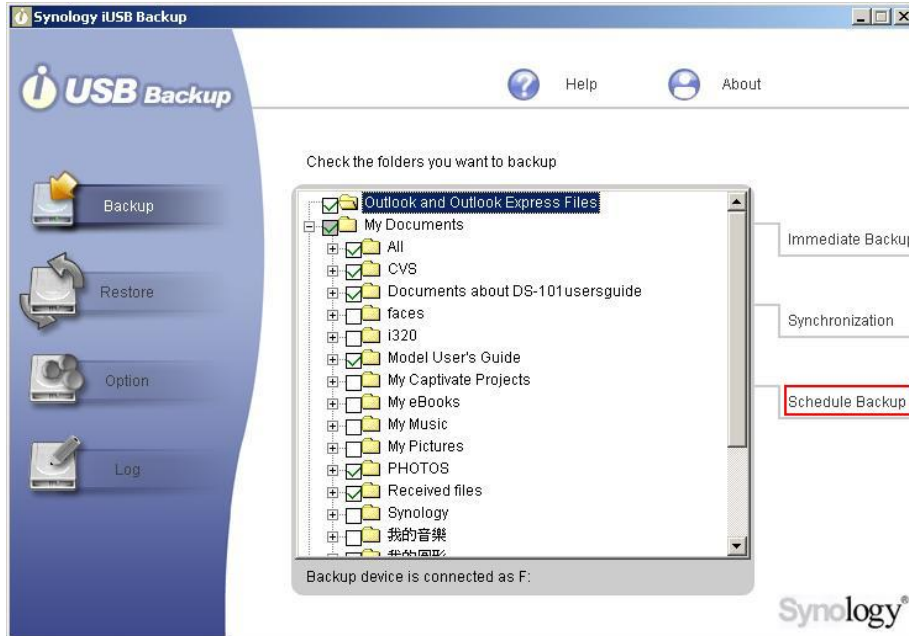
### c. Scheduling Backups

Users can also back up data in the selected folders/files according to the schedule they define.



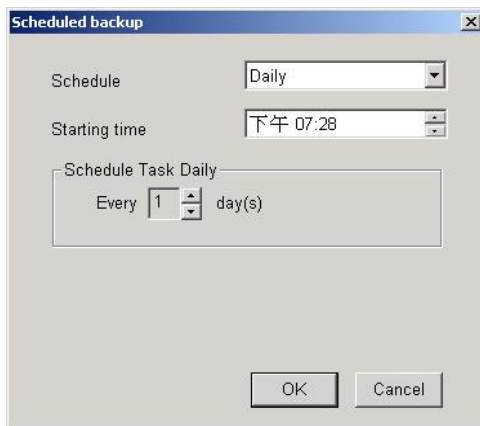
**Note: Schedule Backup function works only when the iUSB Backup is logged in by the user.**

1. Click **Schedule Backup** after selecting folders/files to backup.



2. Set a schedule and a backup time in the following window. Then click **OK** to start the program.

You may choose Once, Daily, Weekly, or Monthly.



**Note:**  
**iUSB Backup supports the following Outlook Express versions:**

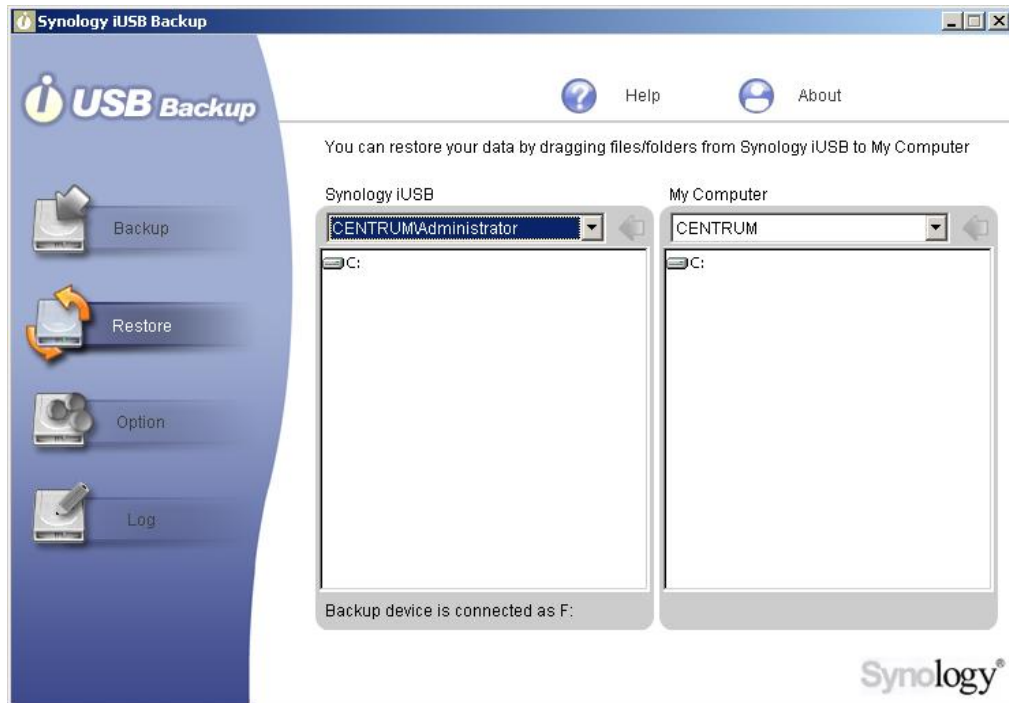
- **Microsoft Outlook Express 5.0**
- **Microsoft Outlook Express 5.01**
- **Microsoft Outlook Express 5.01 Service Pack 1**

- **Microsoft Outlook Express 5.01 Service Pack 2**
- **Microsoft Outlook Express 5.5**
- **Microsoft Outlook Express 6.0**



## B. Restoring Data to your Computer

1. Click the **Restore** button on the left.



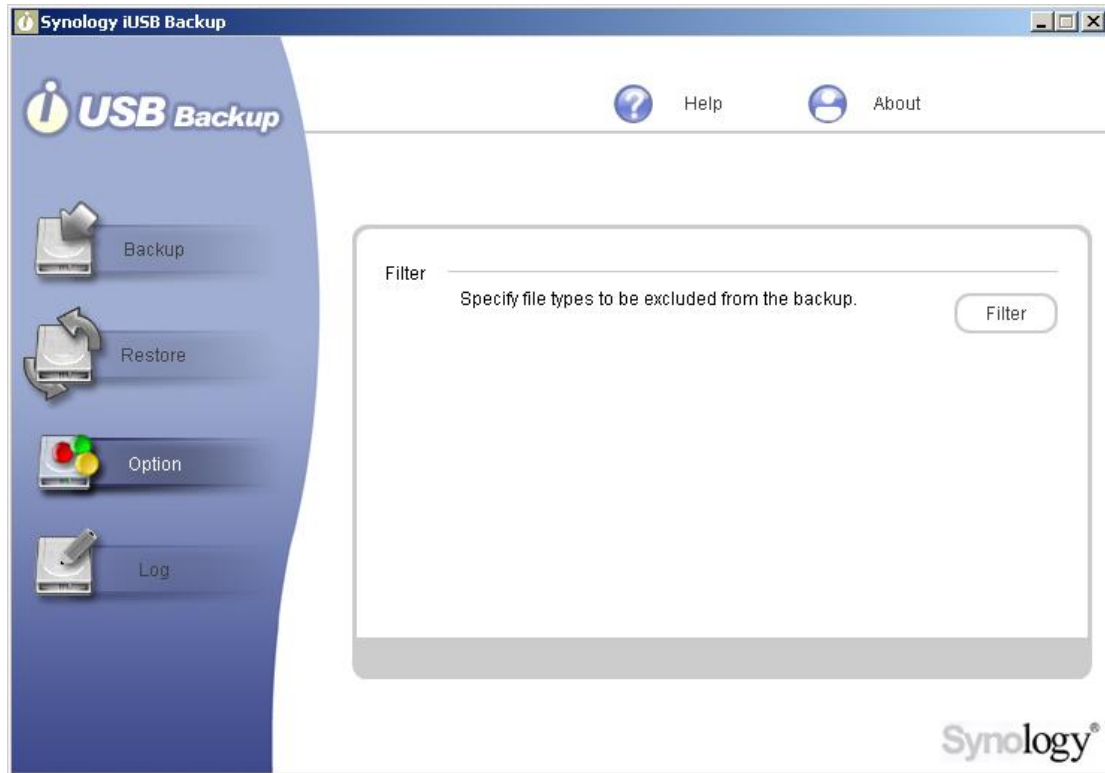
2. Select the location for the files you will restore in the column under **My Computer**. (The path of your own machine).
3. Select the files you want to restore in the column under **Synology iUSB**. Synology iUSB Backup by default uploads Windows client files to the directory on *iUSB private drive*: `\SYNOLOGY_BACKUP-{Your computer name}\`. The column under Synology iUSB displays all subdirectories/files in each directory.
4. Drag folders/files to restore from **Synology iUSB** to **My Computer**.



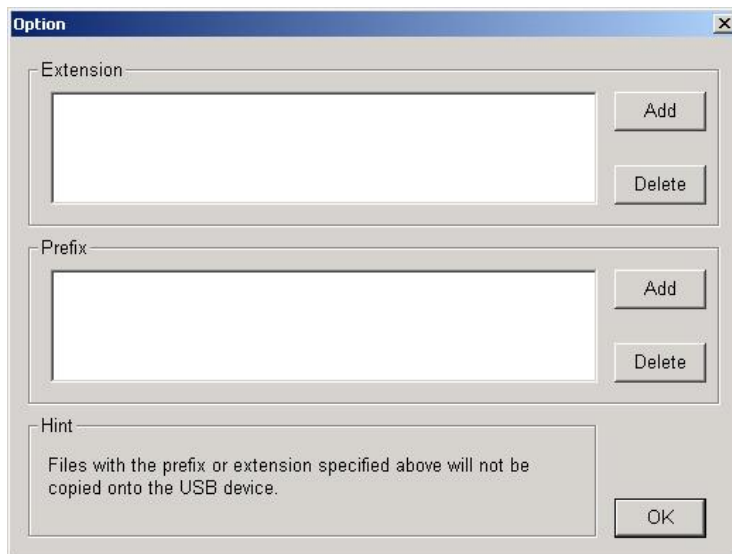
**Note: You can also restore files by dragging files from iUSB Private (drive) in My Computer to the local drive.**

### C. Option

You can choose not to back up certain file types with the Filter function by using the following setting. Files with the specified prefix or extension will not be copied onto the iUSB device.

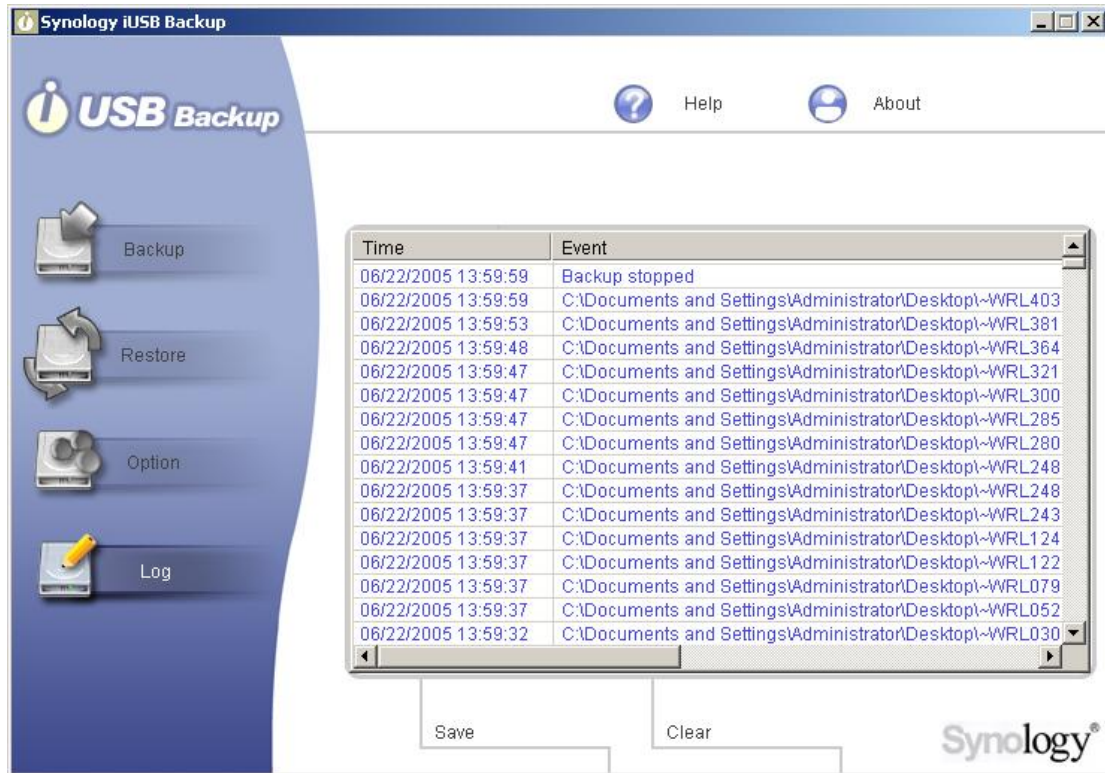


Click the **Filter** button to add specific files to the ignore list, and click **OK** to finish.



## D. Log

All the actions and events executed on the iUSB device will be recorded here. This way, you can always come back to check all previous actions if you missed any action messages.



## Troubleshooting

1. The system cannot detect the iUSB device.	
Check	Solution
If you've connected the iUSB device properly using the USB cable.	Please connect the device to the system using the USB cable.
If power is being supplied to the iUSB device.	Provide sufficient power supply. 1. First connect the iUSB device using the DC USB cable and then the USB cable. 2. If solution 1 does solve this problem, try using a 5V power adapter to ensure sufficient power supply.
If the iUSB is connected to a hub.	If your iUSB device is connected to a hub, you might have a power shortage problem. Please refer to the solutions above.
If the iUSB disk is using the same drive letter with the ones for other network drives.	Please follow the path as: Start→Programs→Accessories→Windows Explorer. Click on “My Computer” and right click “Manage”. Choose “Disk Management” to check if the iUSB drive letter is repeated. If so, please change the other network drive letters.
The system	There may be some problems with the USB component on the motherboard. Please connect the iUSB device to other systems or verify if other USB devices can be detected on your system.
2. The system failed to eject the iUSB device.	
Check	Solution
If the system is executing programs in Synology iUSB or if the iUSB device is being used by other programs.	End all programs including Synology iUSB Backup, Synology iUSB Setup Wizard, and Windows file Manager. Then try ejecting the iUSB device again.

## **Appendix - Specifications**

### **Hardware Specifications**

#### **USB Interface**

USB 2.0 and 1.1 compliant

Mini USB 2.0 port with hot-plug capability

Able to support data transfer rates up to 480 Mbps

#### **Power Jack**

DC 5V Power Jack

#### **LED Status**

POWER LED: Power status

ACTIVE LED: HDD active status

SECURITY LED: Security status

#### **Environmental Specifications**

Operating Temperature: 5 ~ 35°C (41 ~ 95°F)

#### **Physical Specifications**

Dimensions: 120 x 75 x 20 mm

Weight: 130g (without 2.5" HDD)

### **Software Features**

#### **Synology iUSB Backup Wizard**

Plug&Play auto-up software

Step-by-step installation

Password for data protection

#### **Synology iUSB Backup**

Easy to use and powerful backup software

Complete backup function

Drag and drop restoration

#### **Multi-Language Support**

English, French, German, Japanese, Korean, Italian, Spanish, Portuguese, Russian,

Traditional Chinese, Simplified Chinese

## Free Manuals Download Website

<http://myh66.com>

<http://usermanuals.us>

<http://www.somanuals.com>

<http://www.4manuals.cc>

<http://www.manual-lib.com>

<http://www.404manual.com>

<http://www.luxmanual.com>

<http://aubethermostatmanual.com>

Golf course search by state

<http://golfingnear.com>

Email search by domain

<http://emailbydomain.com>

Auto manuals search

<http://auto.somanuals.com>

TV manuals search

<http://tv.somanuals.com>