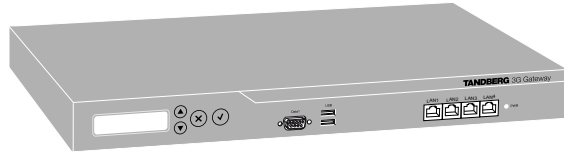


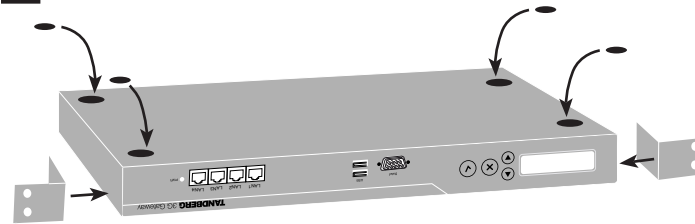
TANDBERG 3G Gateway Installation

1



Unpack the 3G Gateway.

2



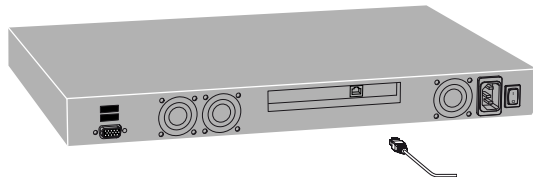
Mount the rack ears and/or rubber feet, if applicable, and turn the unit back on its feet or mount it in the rack.

3



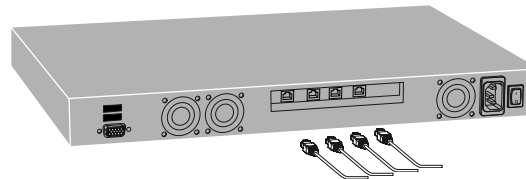
Connect the Ethernet LAN cable to socket LAN 1. Connect the null modem cable between the Data socket and a PC.

4a



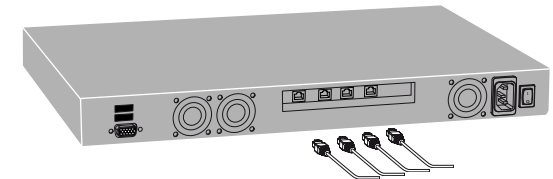
Depending on version, connect the PRI connector ...

4b



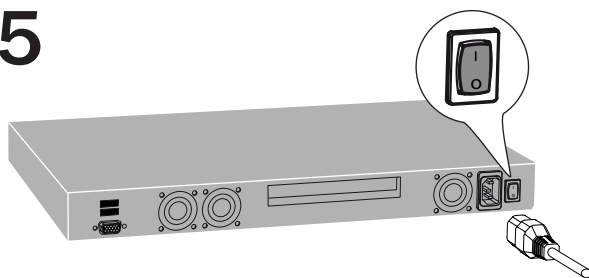
or... connect the 4 PRI connectors ...

4c



or... ... connect the 4 BRI connectors.

5



Connect the power cable and turn on the 3G Gateway. Use the LCD display of the unit to set the IP address – see *Configuring the 3G Gateway* in the User Manual for details, or...

6



Start a Terminal program on the PC and configure it to 115200, 8, 1, None

1. Start a Terminal program on the PC and configure it to 115200, 8, 1, None
2. When prompted for login, enter username admin and password TANDBERG.
3. Type `y` to start the installation wizard and press Enter.
4. When prompted, specify a new password, IP settings, local prefix, SSH y/n, and Telnet y/n.
5. When prompted for login, enter username admin and your new password.
6. Press Enter to skip the installation wizard.
7. Reboot the system by typing the command `xcommand boot`
8. Do the rest of the configuration from the web interface.

Free Manuals Download Website

<http://myh66.com>

<http://usermanuals.us>

<http://www.somanuals.com>

<http://www.4manuals.cc>

<http://www.manual-lib.com>

<http://www.404manual.com>

<http://www.luxmanual.com>

<http://aubethermostatmanual.com>

Golf course search by state

<http://golfingnear.com>

Email search by domain

<http://emailbydomain.com>

Auto manuals search

<http://auto.somanuals.com>

TV manuals search

<http://tv.somanuals.com>